



# Full wwPDB X-ray Structure Validation Report ⓘ

Mar 14, 2018 – 03:21 pm GMT

PDB ID : 2Y1X  
Title : CRYSTAL STRUCTURE OF COACTIVATOR ASSOCIATED ARGININE METHYLTRANSFERASE 1 (CARM1) IN COMPLEX WITH SINEFUNGIN AND INDOLE INHIBITOR  
Authors : Sack, J.S.; Thieffine, S.; Bandiera, T.; Fasolini, M.; Duke, G.J.; Jayaraman, L.; Kish, K.F.; Klei, H.E.; Purandare, A.V.; Rosettani, P.; Troiani, S.; Xie, D.; Bertrand, J.A.  
Deposited on : 2010-12-10  
Resolution : 2.40 Å(reported)

This is a Full wwPDB X-ray Structure Validation Report for a publicly released PDB entry.

We welcome your comments at [validation@mail.wwpdb.org](mailto:validation@mail.wwpdb.org)

A user guide is available at

<https://www.wwpdb.org/validation/2017/XrayValidationReportHelp>

with specific help available everywhere you see the ⓘ symbol.

---

The following versions of software and data (see [references ⓘ](#)) were used in the production of this report:

MolProbity : 4.02b-467  
Mogul : 1.7.3 (157068), CSD as539be (2018)  
Xtriage (Phenix) : 1.13  
EDS : trunk31020  
Percentile statistics : 20171227.v01 (using entries in the PDB archive December 27th 2017)  
Refmac : 5.8.0158  
CCP4 : 7.0 (Gargrove)  
Ideal geometry (proteins) : Engh & Huber (2001)  
Ideal geometry (DNA, RNA) : Parkinson et al. (1996)  
Validation Pipeline (wwPDB-VP) : trunk31020

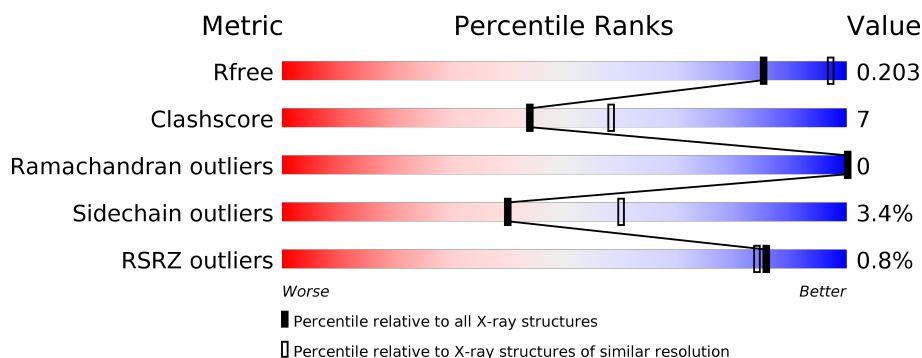
# 1 Overall quality at a glance

The following experimental techniques were used to determine the structure:

*X-RAY DIFFRACTION*

The reported resolution of this entry is 2.40 Å.

Percentile scores (ranging between 0-100) for global validation metrics of the entry are shown in the following graphic. The table shows the number of entries on which the scores are based.



Metric	Whole archive (#Entries)	Similar resolution (#Entries, resolution range(Å))
$R_{free}$	111664	3481 (2.40-2.40)
Clashscore	122126	3956 (2.40-2.40)
Ramachandran outliers	120053	3897 (2.40-2.40)
Sidechain outliers	120020	3898 (2.40-2.40)
RSRZ outliers	108989	3386 (2.40-2.40)

The table below summarises the geometric issues observed across the polymeric chains and their fit to the electron density. The red, orange, yellow and green segments on the lower bar indicate the fraction of residues that contain outliers for  $\geq 3$ , 2, 1 and 0 types of geometric quality criteria. A grey segment represents the fraction of residues that are not modelled. The numeric value for each fraction is indicated below the corresponding segment, with a dot representing fractions  $\leq 5\%$ . The upper red bar (where present) indicates the fraction of residues that have poor fit to the electron density. The numeric value is given above the bar.

Mol	Chain	Length	Quality of chain
1	A	348	<div> <div>2%</div> <div> <div></div> <div>86%</div> <div>12%</div> <div>..</div> </div> </div>
1	B	348	<div> <div>%</div> <div> <div></div> <div>79%</div> <div>18%</div> <div>..</div> </div> </div>
1	C	348	<div> <div></div> <div> <div></div> <div>80%</div> <div>17%</div> <div>..</div> </div> </div>
1	D	348	<div> <div>%</div> <div> <div></div> <div>84%</div> <div>13%</div> <div>..</div> </div> </div>

## 2 Entry composition [i](#)

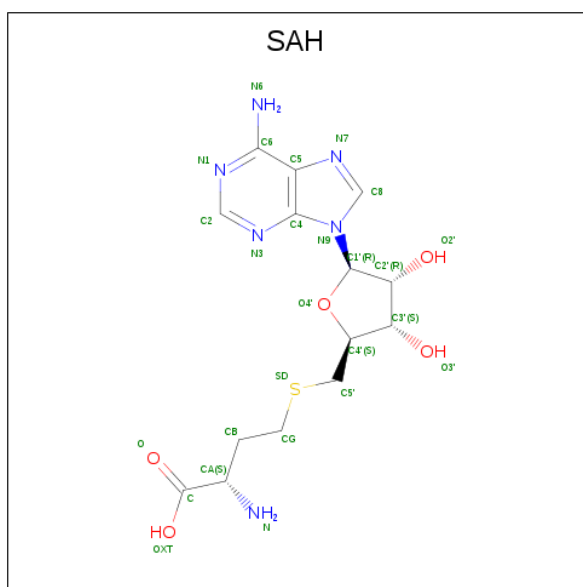
There are 5 unique types of molecules in this entry. The entry contains 11692 atoms, of which 0 are hydrogens and 0 are deuteriums.

In the tables below, the ZeroOcc column contains the number of atoms modelled with zero occupancy, the AltConf column contains the number of residues with at least one atom in alternate conformation and the Trace column contains the number of residues modelled with at most 2 atoms.

- Molecule 1 is a protein called HISTONE-ARGININE METHYLTRANSFERASE CARM1.

Mol	Chain	Residues	Atoms					ZeroOcc	AltConf	Trace
1	A	343	Total	C	N	O	S	0	0	1
			2745	1772	454	505	14			
1	B	343	Total	C	N	O	S	0	0	1
			2745	1772	454	505	14			
1	C	343	Total	C	N	O	S	0	0	1
			2745	1772	454	505	14			
1	D	343	Total	C	N	O	S	0	0	1
			2745	1772	454	505	14			

- Molecule 2 is S-ADENOSYL-L-HOMOCYSTEINE (three-letter code: SAH) (formula:  $C_{14}H_{20}N_6O_5S$ ).



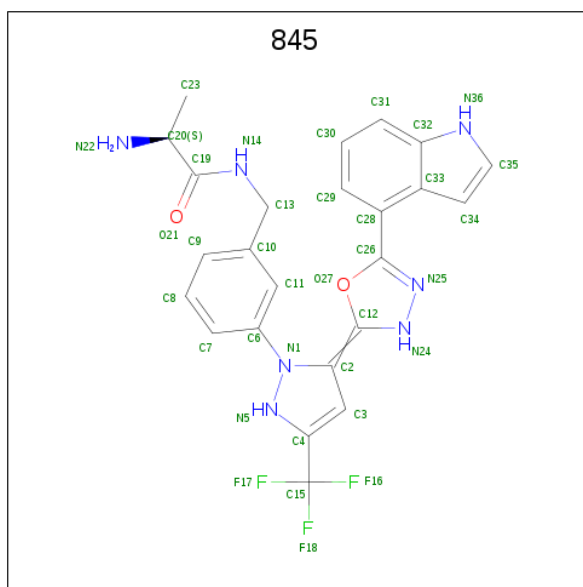
Mol	Chain	Residues	Atoms					ZeroOcc	AltConf
2	A	1	Total	C	N	O	S	0	0
			26	14	6	5	1		
2	B	1	Total	C	N	O	S	0	0
			26	14	6	5	1		

*Continued on next page...*

Continued from previous page...

Mol	Chain	Residues	Atoms					ZeroOcc	AltConf
2	C	1	Total	C	N	O	S	0	0
			26	14	6	5	1		
2	D	1	Total	C	N	O	S	0	0
			26	14	6	5	1		

- Molecule 3 is N-(3-{5-[5-(1H-INDOL-4-YL)-1,3,4-OXADIAZOL-2-YL]-3-(TRIFLUOROMETHYL)-1H-PYRAZOL-1-YL}BENZYL)-L-ALANINAMIDE (three-letter code: 845) (formula: C<sub>24</sub>H<sub>22</sub>F<sub>3</sub>N<sub>7</sub>O<sub>2</sub>).



Mol	Chain	Residues	Atoms					ZeroOcc	AltConf
3	A	1	Total	C	F	N	O	0	0
			36	24	3	7	2		
3	B	1	Total	C	F	N	O	0	0
			36	24	3	7	2		
3	C	1	Total	C	F	N	O	0	0
			36	24	3	7	2		
3	D	1	Total	C	F	N	O	0	0
			36	24	3	7	2		

- Molecule 4 is CHLORIDE ION (three-letter code: CL) (formula: Cl).

Mol	Chain	Residues	Atoms	ZeroOcc	AltConf
4	B	1	Total	0	0
			1 Cl		
4	A	1	Total	0	0
			1 Cl		

Continued on next page...

*Continued from previous page...*

Mol	Chain	Residues	Atoms		ZeroOcc	AltConf
4	D	1	Total 1	Cl 1	0	0
4	C	1	Total 1	Cl 1	0	0

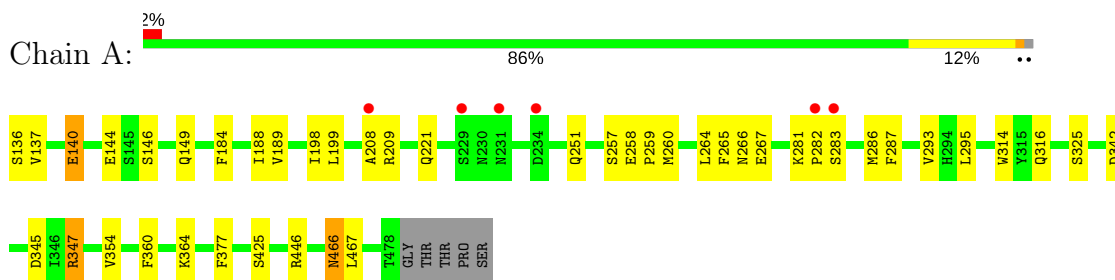
- Molecule 5 is water.

Mol	Chain	Residues	Atoms		ZeroOcc	AltConf
5	A	124	Total 124	O 124	0	0
5	B	86	Total 86	O 86	0	0
5	C	137	Total 137	O 137	0	0
5	D	113	Total 113	O 113	0	0

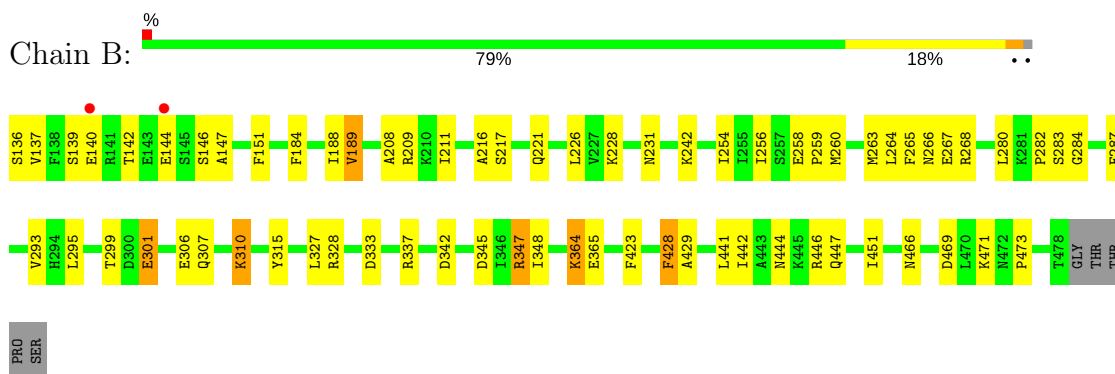
### 3 Residue-property plots

These plots are drawn for all protein, RNA and DNA chains in the entry. The first graphic for a chain summarises the proportions of the various outlier classes displayed in the second graphic. The second graphic shows the sequence view annotated by issues in geometry and electron density. Residues are color-coded according to the number of geometric quality criteria for which they contain at least one outlier: green = 0, yellow = 1, orange = 2 and red = 3 or more. A red dot above a residue indicates a poor fit to the electron density ( $RSRZ > 2$ ). Stretches of 2 or more consecutive residues without any outlier are shown as a green connector. Residues present in the sample, but not in the model, are shown in grey.

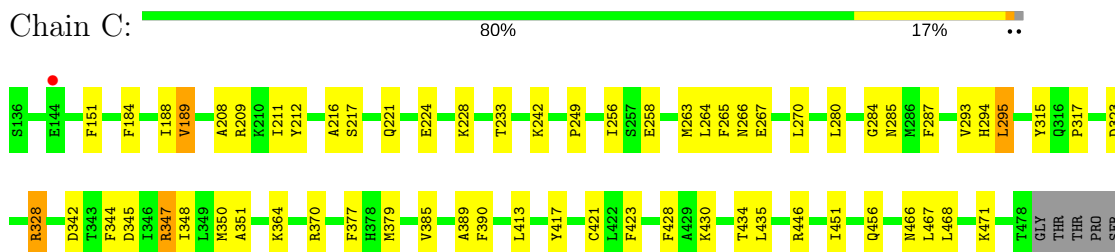
#### • Molecule 1: HISTONE-ARGININE METHYLTRANSFERASE CARM1



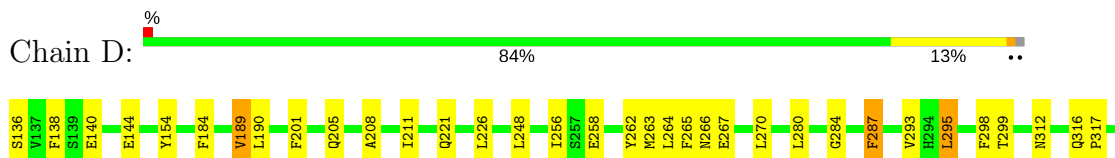
#### • Molecule 1: HISTONE-ARGININE METHYLTRANSFERASE CARM1

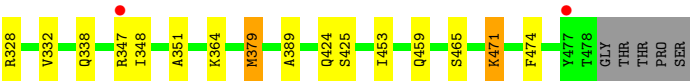


#### • Molecule 1: HISTONE-ARGININE METHYLTRANSFERASE CARM1



#### • Molecule 1: HISTONE-ARGININE METHYLTRANSFERASE CARM1





## 4 Data and refinement statistics

Property	Value	Source
Space group	P 2 <sub>1</sub> 2 <sub>1</sub> 2	Depositor
Cell constants a, b, c, $\alpha$ , $\beta$ , $\gamma$	75.56Å 98.76Å 207.46Å 90.00° 90.00° 90.00°	Depositor
Resolution (Å)	29.96 – 2.40 29.96 – 2.40	Depositor EDS
% Data completeness (in resolution range)	99.3 (29.96-2.40) 99.4 (29.96-2.40)	Depositor EDS
$R_{merge}$	0.12	Depositor
$R_{sym}$	(Not available)	Depositor
$\langle I/\sigma(I) \rangle$ <sup>1</sup>	2.01 (at 2.39Å)	Xtrriage
Refinement program	CNX 2005	Depositor
R, $R_{free}$	0.207 , 0.264 0.207 , 0.203	Depositor DCC
$R_{free}$ test set	3108 reflections (5.08%)	wwPDB-VP
Wilson B-factor (Å <sup>2</sup> )	27.3	Xtrriage
Anisotropy	0.607	Xtrriage
Bulk solvent $k_{sol}$ (e/Å <sup>3</sup> ), $B_{sol}$ (Å <sup>2</sup> )	0.32 , 36.9	EDS
L-test for twinning <sup>2</sup>	$\langle  L  \rangle = 0.50$ , $\langle L^2 \rangle = 0.33$	Xtrriage
Estimated twinning fraction	No twinning to report.	Xtrriage
$F_o, F_c$ correlation	0.94	EDS
Total number of atoms	11692	wwPDB-VP
Average B, all atoms (Å <sup>2</sup> )	27.0	wwPDB-VP

Xtrriage's analysis on translational NCS is as follows: *The analyses of the Patterson function reveals a significant off-origin peak that is 56.90 % of the origin peak, indicating pseudo-translational symmetry. The chance of finding a peak of this or larger height randomly in a structure without pseudo-translational symmetry is equal to 2.5598e-05. The detected translational NCS is most likely also responsible for the elevated intensity ratio.*

<sup>1</sup>Intensities estimated from amplitudes.

<sup>2</sup>Theoretical values of  $\langle |L| \rangle$ ,  $\langle L^2 \rangle$  for acentric reflections are 0.5, 0.333 respectively for untwinned datasets, and 0.375, 0.2 for perfectly twinned datasets.



## 5 Model quality [i](#)

### 5.1 Standard geometry [i](#)

Bond lengths and bond angles in the following residue types are not validated in this section: 845, SAH, CL

The Z score for a bond length (or angle) is the number of standard deviations the observed value is removed from the expected value. A bond length (or angle) with  $|Z| > 5$  is considered an outlier worth inspection. RMSZ is the root-mean-square of all Z scores of the bond lengths (or angles).

Mol	Chain	Bond lengths		Bond angles	
		RMSZ	$\# Z  > 5$	RMSZ	$\# Z  > 5$
1	A	0.52	0/2815	0.60	0/3815
1	B	0.50	0/2815	0.59	0/3815
1	C	0.51	0/2815	0.60	0/3815
1	D	0.50	0/2815	0.58	0/3815
All	All	0.51	0/11260	0.59	0/15260

There are no bond length outliers.

There are no bond angle outliers.

There are no chirality outliers.

There are no planarity outliers.

### 5.2 Too-close contacts [i](#)

In the following table, the Non-H and H(model) columns list the number of non-hydrogen atoms and hydrogen atoms in the chain respectively. The H(added) column lists the number of hydrogen atoms added and optimized by MolProbity. The Clashes column lists the number of clashes within the asymmetric unit, whereas Symm-Clashes lists symmetry related clashes.

Mol	Chain	Non-H	H(model)	H(added)	Clashes	Symm-Clashes
1	A	2745	0	2692	25	0
1	B	2745	0	2692	53	0
1	C	2745	0	2692	44	0
1	D	2745	0	2692	38	0
2	A	26	0	19	0	0
2	B	26	0	19	1	0
2	C	26	0	19	1	0
2	D	26	0	19	0	0
3	A	36	0	22	1	0

*Continued on next page...*

*Continued from previous page...*

Mol	Chain	Non-H	H(model)	H(added)	Clashes	Symm-Clashes
3	B	36	0	22	2	0
3	C	36	0	22	0	0
3	D	36	0	22	1	0
4	A	1	0	0	0	0
4	B	1	0	0	0	0
4	C	1	0	0	0	0
4	D	1	0	0	0	0
5	A	124	0	0	2	0
5	B	86	0	0	6	0
5	C	137	0	0	5	0
5	D	113	0	0	4	0
All	All	11692	0	10932	159	0

The all-atom clashscore is defined as the number of clashes found per 1000 atoms (including hydrogen atoms). The all-atom clashscore for this structure is 7.

All (159) close contacts within the same asymmetric unit are listed below, sorted by their clash magnitude.

Atom-1	Atom-2	Interatomic distance (Å)	Clash overlap (Å)
1:D:338:GLN:HE21	1:D:474:PHE:HB2	1.30	0.95
1:C:315:TYR:HB2	1:C:328:ARG:HD3	1.55	0.88
1:B:345:ASP:OD2	1:B:347:ARG:HB2	1.82	0.80
1:D:338:GLN:NE2	1:D:474:PHE:HB2	1.96	0.79
1:C:328:ARG:HH11	1:C:328:ARG:HG2	1.47	0.77
1:B:333:ASP:O	1:B:337:ARG:HG3	1.85	0.76
1:C:285:ASN:HB2	5:C:2073:HOH:O	1.86	0.76
1:B:140:GLU:OE1	1:B:140:GLU:HA	1.92	0.70
1:A:342:ASP:HB2	5:A:2071:HOH:O	1.91	0.69
1:C:342:ASP:HB2	5:C:2088:HOH:O	1.94	0.68
1:D:144:GLU:HA	1:D:144:GLU:OE1	1.93	0.68
1:D:312:ASN:HD21	1:D:328:ARG:HH21	1.41	0.67
1:B:342:ASP:HB2	5:B:2054:HOH:O	1.96	0.65
1:D:379:MET:CE	1:D:379:MET:HA	2.27	0.65
1:C:421:CYS:SG	1:C:468:LEU:HD22	2.37	0.65
1:D:379:MET:HE3	1:D:379:MET:HA	1.79	0.63
1:D:189:VAL:HG22	1:D:211:ILE:HG23	1.82	0.62
1:C:270:LEU:HB2	5:C:2066:HOH:O	1.99	0.62
1:D:266:ASN:O	1:D:267:GLU:HB2	1.99	0.62
1:B:315:TYR:HB2	1:B:328:ARG:HG3	1.82	0.61
1:C:351:ALA:HB2	1:C:379:MET:HE1	1.83	0.61
1:B:442:ILE:HD12	5:B:2080:HOH:O	2.00	0.60

*Continued on next page...*

*Continued from previous page...*

Atom-1	Atom-2	Interatomic distance (Å)	Clash overlap (Å)
1:D:351:ALA:HB2	1:D:379:MET:HE3	1.82	0.60
1:C:328:ARG:HG2	1:C:328:ARG:NH1	2.17	0.59
1:B:280:LEU:HD11	1:B:284:GLY:HA3	1.85	0.59
1:D:312:ASN:ND2	1:D:328:ARG:HE	2.01	0.59
1:D:265:PHE:CE2	1:D:293:VAL:HG21	2.40	0.57
1:B:228:LYS:HE3	5:B:2022:HOH:O	2.05	0.56
1:A:265:PHE:CE2	1:A:293:VAL:HG21	2.40	0.56
1:C:189:VAL:HG22	1:C:211:ILE:HG23	1.87	0.56
1:C:428:PHE:CE1	1:C:430:LYS:HE2	2.41	0.56
1:A:266:ASN:O	1:A:267:GLU:HB2	2.06	0.55
1:A:466:ASN:ND2	1:A:467:LEU:H	2.05	0.55
1:A:354:VAL:HG23	1:A:377:PHE:CE1	2.42	0.54
1:C:435:LEU:HD12	1:C:456:GLN:O	2.06	0.54
1:B:268:ARG:NH1	1:B:444:ASN:O	2.37	0.54
1:C:265:PHE:CE2	1:C:293:VAL:HG21	2.42	0.54
1:C:317:PRO:O	1:C:323:ASP:HA	2.09	0.53
1:B:184:PHE:O	1:B:208:ALA:HA	2.08	0.53
1:C:377:PHE:O	1:C:434:THR:HA	2.09	0.53
1:C:224:GLU:OE2	1:C:228:LYS:HE2	2.09	0.53
1:C:233:THR:HG22	5:C:2040:HOH:O	2.09	0.53
1:A:184:PHE:O	1:A:208:ALA:HA	2.09	0.52
1:B:136:SER:OG	1:B:137:VAL:N	2.41	0.52
1:D:317:PRO:HD2	5:D:2061:HOH:O	2.08	0.52
1:C:451:ILE:HB	1:C:468:LEU:HB2	1.91	0.52
1:B:146:SER:HB2	1:B:446:ARG:NH1	2.25	0.52
1:D:136:SER:O	1:D:140:GLU:HG2	2.10	0.52
1:C:266:ASN:O	1:C:267:GLU:HB2	2.09	0.52
1:C:151:PHE:CE1	1:C:216:ALA:HB3	2.45	0.51
1:D:459:GLN:OE1	1:D:459:GLN:N	2.42	0.51
1:A:188:ILE:HD11	1:A:209:ARG:HH21	1.76	0.51
1:D:295:LEU:HA	1:D:389:ALA:O	2.11	0.50
1:A:314:TRP:O	1:A:325:SER:HA	2.12	0.50
1:D:184:PHE:O	1:D:208:ALA:HA	2.11	0.50
1:B:428:PHE:HD1	1:B:429:ALA:N	2.10	0.50
1:A:144:GLU:HA	1:A:144:GLU:OE1	2.12	0.50
1:B:469:ASP:OD2	1:B:471:LYS:HG2	2.11	0.50
1:C:265:PHE:HE2	1:C:293:VAL:HG21	1.77	0.50
1:B:189:VAL:HG22	1:B:211:ILE:HG23	1.95	0.49
1:C:295:LEU:N	1:C:295:LEU:HD23	2.28	0.49
1:B:282:PRO:O	1:B:283:SER:HB2	2.12	0.49
1:C:423:PHE:CD1	1:C:466:ASN:ND2	2.82	0.48

*Continued on next page...*

*Continued from previous page...*

Atom-1	Atom-2	Interatomic distance (Å)	Clash overlap (Å)
1:A:267:GLU:OE2	3:A:1002:845:H35	2.14	0.48
1:A:466:ASN:HD22	1:A:467:LEU:H	1.61	0.48
1:D:265:PHE:HE2	1:D:293:VAL:HG21	1.75	0.47
1:B:301:GLU:HG2	1:B:301:GLU:O	2.14	0.47
1:B:142:THR:HG21	1:B:147:ALA:HB2	1.95	0.47
1:D:299:THR:O	1:D:299:THR:HG23	2.14	0.47
1:A:264:LEU:HD23	1:A:293:VAL:CG2	2.45	0.47
1:B:267:GLU:OE2	3:B:1002:845:H35	2.15	0.47
1:A:345:ASP:OD1	1:A:347:ARG:HG2	2.14	0.47
1:D:190:LEU:HD13	1:D:248:LEU:HD11	1.97	0.47
1:B:266:ASN:O	1:B:267:GLU:HB2	2.15	0.47
1:C:344:PHE:CD1	1:C:348:ILE:HD11	2.49	0.47
1:D:453:ILE:O	1:D:465:SER:HA	2.15	0.47
1:A:264:LEU:HD23	1:A:293:VAL:HG22	1.95	0.46
1:B:231:ASN:HA	5:B:2023:HOH:O	2.16	0.46
1:A:282:PRO:O	1:A:283:SER:HB2	2.15	0.46
1:C:428:PHE:HE1	1:C:430:LYS:CE	2.29	0.46
1:C:413:LEU:HD11	1:C:417:TYR:CD2	2.49	0.46
1:B:188:ILE:HD11	1:B:209:ARG:HH21	1.79	0.46
1:B:263:MET:O	1:B:264:LEU:HB3	2.14	0.46
1:B:268:ARG:HD3	1:B:447:GLN:HA	1.98	0.46
1:B:471:LYS:C	1:B:473:PRO:HD3	2.36	0.46
1:D:328:ARG:O	1:D:332:VAL:HG23	2.16	0.46
1:B:265:PHE:CE2	1:B:293:VAL:HG21	2.51	0.46
1:A:136:SER:O	1:A:140:GLU:HB2	2.16	0.46
1:C:264:LEU:HD23	1:C:293:VAL:CG2	2.45	0.46
1:B:147:ALA:O	1:B:151:PHE:HD2	2.00	0.45
1:C:295:LEU:HA	1:C:389:ALA:O	2.16	0.45
1:C:347:ARG:HE	1:C:347:ARG:HB3	1.33	0.45
1:B:264:LEU:HD23	1:B:293:VAL:CG2	2.46	0.45
1:D:266:ASN:O	1:D:267:GLU:CB	2.63	0.45
1:A:137:VAL:HG23	5:A:2001:HOH:O	2.16	0.45
1:B:469:ASP:OD1	1:B:471:LYS:HE2	2.16	0.45
1:C:263:MET:O	1:C:264:LEU:HB3	2.17	0.45
1:D:138:PHE:C	1:D:138:PHE:CD1	2.90	0.45
1:D:316:GLN:HB2	5:D:2061:HOH:O	2.17	0.45
1:C:184:PHE:O	1:C:208:ALA:HA	2.17	0.44
1:B:267:GLU:CD	3:B:1002:845:H35	2.37	0.44
1:B:307:GLN:OE1	1:B:310:LYS:HE2	2.17	0.44
1:B:256:ILE:HA	1:B:287:PHE:O	2.17	0.44
1:D:201:PHE:O	1:D:205:GLN:HG3	2.18	0.44

*Continued on next page...*

*Continued from previous page...*

Atom-1	Atom-2	Interatomic distance (Å)	Clash overlap (Å)
1:C:151:PHE:O	1:C:217:SER:HB2	2.18	0.44
1:C:379:MET:CE	1:C:379:MET:HA	2.48	0.44
1:B:327:LEU:HD11	1:D:226:LEU:HG	2.00	0.44
1:B:299:THR:O	1:B:348:ILE:HB	2.18	0.43
1:D:270:LEU:HB2	5:D:2043:HOH:O	2.19	0.43
1:D:256:ILE:HA	1:D:287:PHE:O	2.18	0.43
1:A:286:MET:HE3	1:A:360:PHE:HB3	2.00	0.43
1:B:428:PHE:CD1	1:B:429:ALA:N	2.87	0.43
1:C:350:MET:SD	1:C:385:VAL:HG22	2.59	0.43
1:A:259:PRO:HD2	1:A:260:MET:SD	2.59	0.43
1:C:294:HIS:O	1:C:390:PHE:HA	2.18	0.43
1:C:256:ILE:HA	1:C:287:PHE:O	2.19	0.43
1:B:242:LYS:HA	2:B:1001:SAH:N1	2.34	0.43
1:B:364:LYS:O	1:B:365:GLU:C	2.58	0.43
1:C:328:ARG:NH1	1:C:328:ARG:CG	2.82	0.42
1:B:423:PHE:HA	1:B:466:ASN:OD1	2.19	0.42
1:B:144:GLU:C	1:B:146:SER:N	2.73	0.42
1:D:312:ASN:HD21	1:D:328:ARG:NH2	2.10	0.42
1:D:471:LYS:HE2	5:D:2108:HOH:O	2.19	0.42
1:A:345:ASP:OD1	1:A:347:ARG:CG	2.68	0.42
1:B:144:GLU:O	1:B:146:SER:N	2.53	0.42
1:B:259:PRO:HD2	1:B:260:MET:SD	2.60	0.42
1:C:242:LYS:HA	2:C:1001:SAH:N1	2.35	0.42
1:B:142:THR:CG2	1:B:147:ALA:HB2	2.50	0.42
1:C:370:ARG:NE	5:C:2100:HOH:O	2.45	0.42
1:C:446:ARG:HB3	1:C:471:LYS:HE2	2.02	0.42
1:D:263:MET:O	1:D:264:LEU:HB3	2.20	0.42
1:B:189:VAL:HB	1:B:254:ILE:HG23	2.02	0.42
1:C:212:TYR:OH	1:C:249:PRO:HG2	2.20	0.42
1:D:262:TYR:O	1:D:263:MET:HB2	2.20	0.42
1:A:198:ILE:HG23	1:A:199:LEU:N	2.35	0.41
1:A:251:GLN:HB3	1:A:281:LYS:HG3	2.03	0.41
1:B:471:LYS:O	1:B:473:PRO:HD3	2.20	0.41
1:B:226:LEU:HA	1:B:226:LEU:HD23	1.80	0.41
1:C:188:ILE:HD11	1:C:209:ARG:HH21	1.86	0.41
1:C:345:ASP:O	1:C:348:ILE:HG12	2.21	0.41
1:D:298:PHE:HA	1:D:348:ILE:O	2.20	0.41
1:B:217:SER:HB2	5:B:2002:HOH:O	2.19	0.41
1:B:441:LEU:CD2	1:B:451:ILE:HG12	2.51	0.41
1:D:154:TYR:OH	3:D:1002:845:H232	2.21	0.41
1:A:265:PHE:HE2	1:A:293:VAL:HG21	1.81	0.41

*Continued on next page...*

Continued from previous page...

Atom-1	Atom-2	Interatomic distance (Å)	Clash overlap (Å)
1:B:306:GLU:HB2	5:B:2039:HOH:O	2.20	0.41
1:B:147:ALA:O	1:B:151:PHE:CD2	2.74	0.41
1:D:295:LEU:N	1:D:295:LEU:HD23	2.36	0.41
1:B:151:PHE:CE1	1:B:216:ALA:HB3	2.56	0.41
1:D:280:LEU:HD11	1:D:284:GLY:HA3	2.03	0.41
1:D:264:LEU:HD23	1:D:293:VAL:CG2	2.50	0.40
1:D:347:ARG:HE	1:D:347:ARG:HB2	1.67	0.40
1:A:257:SER:C	1:A:259:PRO:HD3	2.41	0.40
1:A:146:SER:HB2	1:A:446:ARG:NH1	2.36	0.40
1:C:212:TYR:CZ	1:C:249:PRO:HG2	2.56	0.40
1:C:280:LEU:HD11	1:C:284:GLY:HA3	2.04	0.40
1:B:151:PHE:CE2	1:B:242:LYS:HE3	2.57	0.40
1:B:151:PHE:O	1:B:217:SER:HB2	2.22	0.40
1:B:469:ASP:CG	1:B:471:LYS:HG2	2.42	0.40

There are no symmetry-related clashes.

## 5.3 Torsion angles [i](#)

### 5.3.1 Protein backbone [i](#)

In the following table, the Percentiles column shows the percent Ramachandran outliers of the chain as a percentile score with respect to all X-ray entries followed by that with respect to entries of similar resolution.

The Analysed column shows the number of residues for which the backbone conformation was analysed, and the total number of residues.

Mol	Chain	Analysed	Favoured	Allowed	Outliers	Percentiles	
1	A	341/348 (98%)	327 (96%)	14 (4%)	0	100	100
1	B	341/348 (98%)	324 (95%)	17 (5%)	0	100	100
1	C	341/348 (98%)	327 (96%)	14 (4%)	0	100	100
1	D	341/348 (98%)	327 (96%)	14 (4%)	0	100	100
All	All	1364/1392 (98%)	1305 (96%)	59 (4%)	0	100	100

There are no Ramachandran outliers to report.

### 5.3.2 Protein sidechains ⓘ

In the following table, the Percentiles column shows the percent sidechain outliers of the chain as a percentile score with respect to all X-ray entries followed by that with respect to entries of similar resolution.

The Analysed column shows the number of residues for which the sidechain conformation was analysed, and the total number of residues.

Mol	Chain	Analysed	Rotameric	Outliers	Percentiles	
1	A	298/303 (98%)	286 (96%)	12 (4%)	34	53
1	B	298/303 (98%)	288 (97%)	10 (3%)	40	60
1	C	298/303 (98%)	290 (97%)	8 (3%)	48	68
1	D	298/303 (98%)	288 (97%)	10 (3%)	40	60
All	All	1192/1212 (98%)	1152 (97%)	40 (3%)	40	60

All (40) residues with a non-rotameric sidechain are listed below:

Mol	Chain	Res	Type
1	A	140	GLU
1	A	149	GLN
1	A	189	VAL
1	A	221	GLN
1	A	258	GLU
1	A	287	PHE
1	A	295	LEU
1	A	316	GLN
1	A	347	ARG
1	A	364	LYS
1	A	425	SER
1	A	466	ASN
1	B	139	SER
1	B	189	VAL
1	B	221	GLN
1	B	258	GLU
1	B	295	LEU
1	B	301	GLU
1	B	310	LYS
1	B	347	ARG
1	B	364	LYS
1	B	428	PHE
1	C	189	VAL
1	C	221	GLN

*Continued on next page...*

*Continued from previous page...*

Mol	Chain	Res	Type
1	C	258	GLU
1	C	295	LEU
1	C	328	ARG
1	C	347	ARG
1	C	364	LYS
1	C	467	LEU
1	D	189	VAL
1	D	221	GLN
1	D	258	GLU
1	D	287	PHE
1	D	295	LEU
1	D	364	LYS
1	D	379	MET
1	D	424	GLN
1	D	425	SER
1	D	471	LYS

Some sidechains can be flipped to improve hydrogen bonding and reduce clashes. All (14) such sidechains are listed below:

Mol	Chain	Res	Type
1	A	161	GLN
1	A	174	GLN
1	A	466	ASN
1	A	472	ASN
1	B	161	GLN
1	B	174	GLN
1	C	149	GLN
1	C	161	GLN
1	C	174	GLN
1	C	302	GLN
1	D	161	GLN
1	D	174	GLN
1	D	312	ASN
1	D	338	GLN

### 5.3.3 RNA ⓘ

There are no RNA molecules in this entry.



## 5.4 Non-standard residues in protein, DNA, RNA chains [i](#)

There are no non-standard protein/DNA/RNA residues in this entry.

## 5.5 Carbohydrates [i](#)

There are no carbohydrates in this entry.

## 5.6 Ligand geometry [i](#)

Of 12 ligands modelled in this entry, 4 are monoatomic - leaving 8 for Mogul analysis.

In the following table, the Counts columns list the number of bonds (or angles) for which Mogul statistics could be retrieved, the number of bonds (or angles) that are observed in the model and the number of bonds (or angles) that are defined in the Chemical Component Dictionary. The Link column lists molecule types, if any, to which the group is linked. The Z score for a bond length (or angle) is the number of standard deviations the observed value is removed from the expected value. A bond length (or angle) with  $|Z| > 2$  is considered an outlier worth inspection. RMSZ is the root-mean-square of all Z scores of the bond lengths (or angles).

Mol	Type	Chain	Res	Link	Bond lengths			Bond angles		
					Counts	RMSZ	# Z  > 2	Counts	RMSZ	# Z  > 2
2	SAH	A	1001	-	20,28,28	1.36	1 (5%)	19,40,40	1.78	4 (21%)
3	845	A	1002	-	32,40,40	2.33	10 (31%)	40,59,59	1.35	4 (10%)
2	SAH	B	1001	-	20,28,28	1.59	3 (15%)	19,40,40	1.76	3 (15%)
3	845	B	1002	-	32,40,40	2.32	13 (40%)	40,59,59	1.43	6 (15%)
2	SAH	C	1001	-	20,28,28	1.64	2 (10%)	19,40,40	1.73	3 (15%)
3	845	C	1002	-	32,40,40	2.24	9 (28%)	40,59,59	1.49	5 (12%)
2	SAH	D	1001	-	20,28,28	1.60	3 (15%)	19,40,40	1.79	4 (21%)
3	845	D	1002	-	32,40,40	2.36	9 (28%)	40,59,59	1.27	4 (10%)

In the following table, the Chirals column lists the number of chiral outliers, the number of chiral centers analysed, the number of these observed in the model and the number defined in the Chemical Component Dictionary. Similar counts are reported in the Torsion and Rings columns. '-' means no outliers of that kind were identified.

Mol	Type	Chain	Res	Link	Chirals	Torsions	Rings
2	SAH	A	1001	-	-	0/7/31/31	0/3/3/3
3	845	A	1002	-	-	0/21/27/27	0/5/5/5
2	SAH	B	1001	-	-	0/7/31/31	0/3/3/3
3	845	B	1002	-	-	0/21/27/27	0/5/5/5
2	SAH	C	1001	-	-	0/7/31/31	0/3/3/3

*Continued on next page...*

*Continued from previous page...*

Mol	Type	Chain	Res	Link	Chirals	Torsions	Rings
3	845	C	1002	-	-	0/21/27/27	0/5/5/5
2	SAH	D	1001	-	-	0/7/31/31	0/3/3/3
3	845	D	1002	-	-	0/21/27/27	0/5/5/5

All (50) bond length outliers are listed below:

Mol	Chain	Res	Type	Atoms	Z	Observed(Å)	Ideal(Å)
3	D	1002	845	C6-N1	-8.51	1.27	1.44
3	A	1002	845	C6-N1	-7.79	1.28	1.44
3	C	1002	845	C6-N1	-7.26	1.29	1.44
3	B	1002	845	C6-N1	-7.17	1.29	1.44
2	C	1001	SAH	C4-N3	-3.04	1.31	1.35
2	B	1001	SAH	C4-N3	-2.96	1.31	1.35
2	D	1001	SAH	C4-N3	-2.78	1.31	1.35
3	D	1002	845	N5-N1	-2.75	1.34	1.39
3	A	1002	845	N5-N1	-2.27	1.35	1.39
3	B	1002	845	N5-N1	-2.25	1.35	1.39
3	D	1002	845	N24-N25	-2.03	1.33	1.37
3	A	1002	845	C13-C10	2.04	1.56	1.51
3	B	1002	845	C30-C31	2.08	1.41	1.36
2	B	1001	SAH	C8-N9	2.15	1.39	1.36
3	B	1002	845	C28-C33	2.17	1.47	1.42
3	C	1002	845	C28-C33	2.20	1.47	1.42
3	D	1002	845	C9-C10	2.30	1.43	1.38
3	B	1002	845	C13-C10	2.34	1.56	1.51
3	C	1002	845	C11-C10	2.37	1.43	1.39
3	B	1002	845	C7-C6	2.37	1.42	1.38
3	A	1002	845	C13-N14	2.42	1.50	1.46
3	B	1002	845	C15-C4	2.48	1.54	1.50
3	A	1002	845	C4-N5	2.51	1.36	1.33
3	A	1002	845	C30-C29	2.52	1.43	1.38
3	B	1002	845	C2-N1	2.57	1.42	1.38
3	C	1002	845	C9-C10	2.61	1.44	1.38
3	B	1002	845	C30-C29	2.61	1.44	1.38
3	B	1002	845	C11-C10	2.64	1.43	1.39
3	D	1002	845	C2-N1	2.64	1.42	1.38
3	A	1002	845	C9-C10	2.69	1.44	1.38
2	D	1001	SAH	C8-N9	2.73	1.40	1.36
3	D	1002	845	C7-C6	2.94	1.43	1.38
3	A	1002	845	C7-C6	2.96	1.43	1.38
3	C	1002	845	C2-N1	3.02	1.43	1.38
3	C	1002	845	C7-C6	3.17	1.44	1.38

*Continued on next page...*

*Continued from previous page...*

Mol	Chain	Res	Type	Atoms	Z	Observed(Å)	Ideal(Å)
3	C	1002	845	C4-N5	3.23	1.37	1.33
3	B	1002	845	C29-C28	3.23	1.44	1.38
3	D	1002	845	C11-C6	3.29	1.42	1.38
3	B	1002	845	C11-C6	3.56	1.43	1.38
3	D	1002	845	C29-C28	3.60	1.44	1.38
3	C	1002	845	C29-C28	3.77	1.45	1.38
2	A	1001	SAH	C2-N3	4.06	1.38	1.32
3	C	1002	845	C11-C6	4.08	1.43	1.38
3	A	1002	845	C29-C28	4.10	1.45	1.38
3	D	1002	845	C4-N5	4.11	1.38	1.33
2	B	1001	SAH	C2-N3	4.66	1.39	1.32
2	D	1001	SAH	C2-N3	4.76	1.39	1.32
3	B	1002	845	C4-N5	4.83	1.39	1.33
3	A	1002	845	C11-C6	5.03	1.45	1.38
2	C	1001	SAH	C2-N3	5.31	1.40	1.32

All (33) bond angle outliers are listed below:

Mol	Chain	Res	Type	Atoms	Z	Observed(°)	Ideal(°)
2	A	1001	SAH	N3-C2-N1	-5.51	124.15	128.86
2	B	1001	SAH	N3-C2-N1	-5.49	124.16	128.86
2	D	1001	SAH	N3-C2-N1	-5.35	124.28	128.86
2	C	1001	SAH	N3-C2-N1	-5.15	124.46	128.86
3	B	1002	845	C7-C6-C11	-2.47	119.18	121.70
3	A	1002	845	C3-C4-N5	-2.42	107.98	111.50
3	C	1002	845	C7-C6-C11	-2.26	119.40	121.70
3	B	1002	845	C3-C4-N5	-2.21	108.28	111.50
3	D	1002	845	C3-C4-N5	-2.07	108.48	111.50
2	A	1001	SAH	C2-N1-C6	2.09	122.30	118.75
2	B	1001	SAH	O2'-C2'-C3'	2.13	118.64	111.83
3	C	1002	845	C13-N14-C19	2.25	125.40	122.40
3	D	1002	845	C28-C26-N25	2.28	127.69	123.86
2	D	1001	SAH	C1'-N9-C4	2.28	130.58	126.64
2	C	1001	SAH	O2'-C2'-C3'	2.28	119.14	111.83
3	B	1002	845	C11-C6-N1	2.33	121.97	119.13
3	C	1002	845	C4-N5-N1	2.44	108.49	105.66
2	A	1001	SAH	O2'-C2'-C3'	2.49	119.80	111.83
3	D	1002	845	C4-N5-N1	2.57	108.64	105.66
3	B	1002	845	C4-N5-N1	2.71	108.80	105.66
2	D	1001	SAH	C5-C6-N6	2.73	126.03	120.47
2	D	1001	SAH	O2'-C2'-C3'	2.84	120.92	111.83
2	A	1001	SAH	C5-C6-N6	2.97	126.52	120.47

*Continued on next page...*

*Continued from previous page...*

Mol	Chain	Res	Type	Atoms	Z	Observed(°)	Ideal(°)
2	B	1001	SAH	C5-C6-N6	2.97	126.53	120.47
3	A	1002	845	C4-N5-N1	2.99	109.13	105.66
2	C	1001	SAH	C5-C6-N6	3.07	126.72	120.47
3	A	1002	845	C28-C26-N25	3.11	129.09	123.86
3	C	1002	845	C28-C26-N25	3.17	129.19	123.86
3	B	1002	845	C28-C26-N25	3.30	129.41	123.86
3	A	1002	845	C15-C4-N5	3.77	124.16	119.72
3	D	1002	845	C15-C4-N5	4.10	124.54	119.72
3	B	1002	845	C15-C4-N5	4.57	125.09	119.72
3	C	1002	845	C15-C4-N5	4.68	125.23	119.72

There are no chirality outliers.

There are no torsion outliers.

There are no ring outliers.

5 monomers are involved in 6 short contacts:

Mol	Chain	Res	Type	Clashes	Symm-Clashes
3	A	1002	845	1	0
2	B	1001	SAH	1	0
3	B	1002	845	2	0
2	C	1001	SAH	1	0
3	D	1002	845	1	0

## 5.7 Other polymers [i](#)

There are no such residues in this entry.

## 5.8 Polymer linkage issues [i](#)

There are no chain breaks in this entry.

## 6 Fit of model and data [i](#)

### 6.1 Protein, DNA and RNA chains [i](#)

In the following table, the column labelled ‘#RSRZ > 2’ contains the number (and percentage) of RSRZ outliers, followed by percent RSRZ outliers for the chain as percentile scores relative to all X-ray entries and entries of similar resolution. The OWAB column contains the minimum, median, 95<sup>th</sup> percentile and maximum values of the occupancy-weighted average B-factor per residue. The column labelled ‘Q < 0.9’ lists the number of (and percentage) of residues with an average occupancy less than 0.9.

Mol	Chain	Analysed	<RSRZ>	#RSRZ>2	OWAB(Å <sup>2</sup> )	Q<0.9
1	A	343/348 (98%)	-0.19	6 (1%) 70 67	10, 25, 40, 49	0
1	B	343/348 (98%)	-0.30	2 (0%) 89 87	17, 28, 42, 60	0
1	C	343/348 (98%)	-0.36	1 (0%) 93 93	14, 26, 38, 47	0
1	D	343/348 (98%)	-0.33	2 (0%) 89 87	13, 26, 38, 46	0
All	All	1372/1392 (98%)	-0.29	11 (0%) 86 84	10, 26, 40, 60	0

All (11) RSRZ outliers are listed below:

Mol	Chain	Res	Type	RSRZ
1	A	234	ASP	3.0
1	A	282	PRO	2.8
1	A	229	SER	2.5
1	D	477	TYR	2.4
1	C	144	GLU	2.3
1	A	208	ALA	2.3
1	B	144	GLU	2.2
1	B	140	GLU	2.1
1	D	347	ARG	2.1
1	A	231	ASN	2.1
1	A	283	SER	2.0

### 6.2 Non-standard residues in protein, DNA, RNA chains [i](#)

There are no non-standard protein/DNA/RNA residues in this entry.

### 6.3 Carbohydrates [i](#)

There are no carbohydrates in this entry.

## 6.4 Ligands [i](#)

In the following table, the Atoms column lists the number of modelled atoms in the group and the number defined in the chemical component dictionary. The B-factors column lists the minimum, median, 95<sup>th</sup> percentile and maximum values of B factors of atoms in the group. The column labelled 'Q< 0.9' lists the number of atoms with occupancy less than 0.9.

Mol	Type	Chain	Res	Atoms	RSCC	RSR	B-factors( $\text{\AA}^2$ )	Q<0.9
4	CL	A	1003	1/1	0.85	0.16	47,47,47,47	0
3	845	D	1002	36/36	0.90	0.16	18,32,47,47	0
3	845	A	1002	36/36	0.91	0.16	17,26,40,41	0
4	CL	D	1003	1/1	0.92	0.20	44,44,44,44	0
3	845	B	1002	36/36	0.92	0.16	11,27,44,45	0
3	845	C	1002	36/36	0.92	0.15	13,27,39,40	0
2	SAH	A	1001	26/26	0.93	0.17	21,26,33,34	0
4	CL	B	1003	1/1	0.94	0.16	53,53,53,53	0
2	SAH	B	1001	26/26	0.95	0.14	13,26,30,32	0
4	CL	C	1003	1/1	0.95	0.16	47,47,47,47	0
2	SAH	D	1001	26/26	0.96	0.15	16,19,21,22	0
2	SAH	C	1001	26/26	0.97	0.13	14,19,21,23	0

## 6.5 Other polymers [i](#)

There are no such residues in this entry.