



Full wwPDB X-ray Structure Validation Report ⓘ

Mar 14, 2018 – 01:06 pm GMT

PDB ID : 1Z3N
Title : Human aldose reductase in complex with NADP⁺ and the inhibitor lidorestat at 1.04 angstrom
Authors : Van Zandt, M.C.; Jones, M.L.; Gunn, D.E.; Geraci, L.S.; Jones, J.H.; Sawicki, D.R.; Sredy, J.; Jacot, J.L.; Dicioccio, A.T.; Petrova, T.; Mitschler, A.; Podjarny, A.D.
Deposited on : 2005-03-14
Resolution : 1.04 Å(reported)

This is a Full wwPDB X-ray Structure Validation Report for a publicly released PDB entry.

We welcome your comments at validation@mail.wwpdb.org

A user guide is available at

<https://www.wwpdb.org/validation/2017/XrayValidationReportHelp>

with specific help available everywhere you see the ⓘ symbol.

The following versions of software and data (see [references ⓘ](#)) were used in the production of this report:

MolProbity : 4.02b-467
Mogul : 1.7.3 (157068), CSD as539be (2018)
Xtriage (Phenix) : 1.13
EDS : trunk31020
Percentile statistics : 20171227.v01 (using entries in the PDB archive December 27th 2017)
Refmac : 5.8.0158
CCP4 : 7.0 (Gargrove)
Ideal geometry (proteins) : Engh & Huber (2001)
Ideal geometry (DNA, RNA) : Parkinson et al. (1996)
Validation Pipeline (wwPDB-VP) : trunk31020

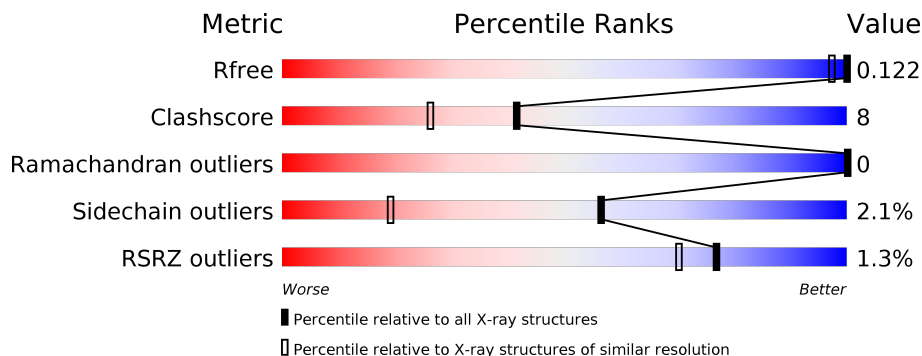
1 Overall quality at a glance

The following experimental techniques were used to determine the structure:

X-RAY DIFFRACTION

The reported resolution of this entry is 1.04 Å.

Percentile scores (ranging between 0-100) for global validation metrics of the entry are shown in the following graphic. The table shows the number of entries on which the scores are based.



Metric	Whole archive (#Entries)	Similar resolution (#Entries, resolution range(Å))
R_{free}	111664	1291 (1.10-0.98)
Clashscore	122126	1363 (1.10-0.98)
Ramachandran outliers	120053	1282 (1.10-0.98)
Sidechain outliers	120020	1280 (1.10-0.98)
RSRZ outliers	108989	1255 (1.10-0.98)

The table below summarises the geometric issues observed across the polymeric chains and their fit to the electron density. The red, orange, yellow and green segments on the lower bar indicate the fraction of residues that contain outliers for ≥ 3 , 2, 1 and 0 types of geometric quality criteria. A grey segment represents the fraction of residues that are not modelled. The numeric value for each fraction is indicated below the corresponding segment, with a dot representing fractions $\leq 5\%$. The upper red bar (where present) indicates the fraction of residues that have poor fit to the electron density. The numeric value is given above the bar.

Mol	Chain	Length	Quality of chain
1	A	319	<div> <div></div> <div>83%</div> <div>13%</div> <div>...</div> </div>

2 Entry composition [i](#)

There are 4 unique types of molecules in this entry. The entry contains 3446 atoms, of which 0 are hydrogens and 0 are deuteriums.

In the tables below, the ZeroOcc column contains the number of atoms modelled with zero occupancy, the AltConf column contains the number of residues with at least one atom in alternate conformation and the Trace column contains the number of residues modelled with at most 2 atoms.

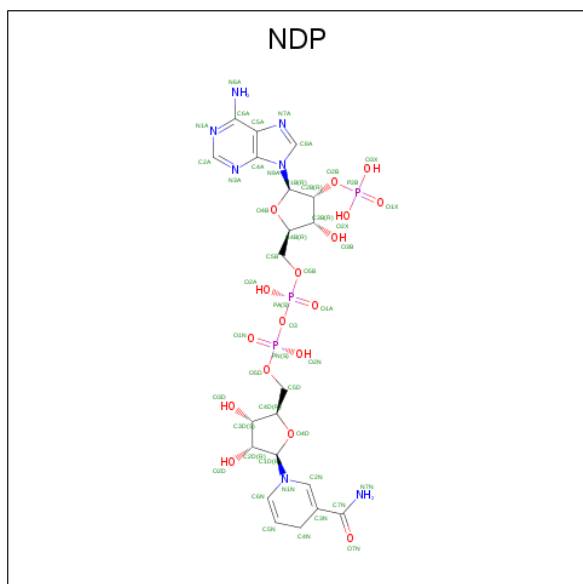
- Molecule 1 is a protein called aldose reductase.

Mol	Chain	Residues	Atoms					ZeroOcc	AltConf	Trace
			Total	C	N	O	S			
1	A	316	2974	1893	507	557	17	0	75	0

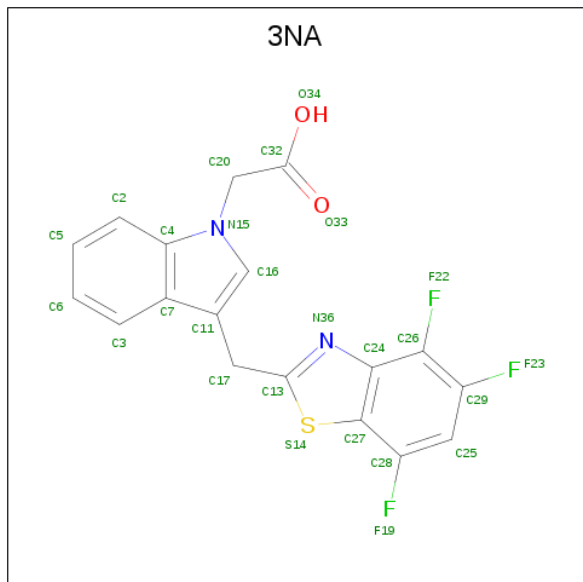
There are 3 discrepancies between the modelled and reference sequences:

Chain	Residue	Modelled	Actual	Comment	Reference
A	-3	GLY	-	EXPRESSION TAG	GB 178489
A	-2	SER	-	EXPRESSION TAG	GB 178489
A	-1	HIS	-	EXPRESSION TAG	GB 178489

- Molecule 2 is NADPH DIHYDRO-NICOTINAMIDE-ADENINE-DINUCLEOTIDE PHOSPHATE (three-letter code: NDP) (formula: $C_{21}H_{30}N_7O_{17}P_3$).



- Molecule 3 is {3-[(4,5,7-TRIFLUORO-1,3-BENZOTHIASOL-2-YL)METHYL]-1H-INDOL-1-YL}ACETIC ACID (three-letter code: 3NA) (formula: C₁₈H₁₁F₃N₂O₂S).



Mol	Chain	Residues	Atoms						ZeroOcc	AltConf
			Total	C	F	N	O	S		
3	A	1	26	18	3	2	2	1	0	0

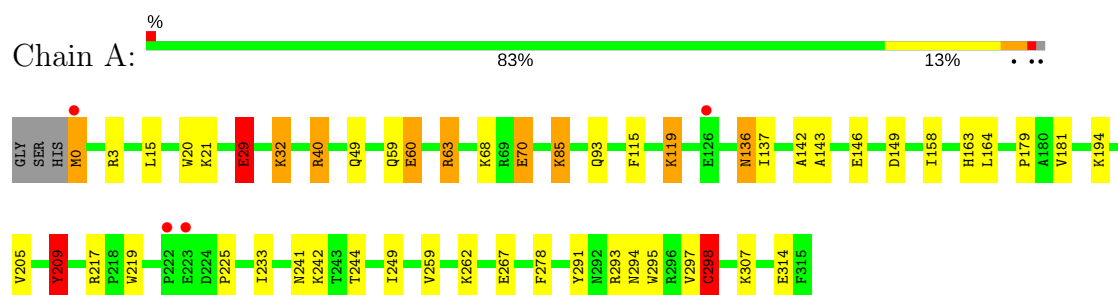
- Molecule 4 is water.

Mol	Chain	Residues	Atoms		ZeroOcc	AltConf
4	A	397	Total	O	0	32
			398	398		

3 Residue-property plots [i](#)

These plots are drawn for all protein, RNA and DNA chains in the entry. The first graphic for a chain summarises the proportions of the various outlier classes displayed in the second graphic. The second graphic shows the sequence view annotated by issues in geometry and electron density. Residues are color-coded according to the number of geometric quality criteria for which they contain at least one outlier: green = 0, yellow = 1, orange = 2 and red = 3 or more. A red dot above a residue indicates a poor fit to the electron density ($RSRZ > 2$). Stretches of 2 or more consecutive residues without any outlier are shown as a green connector. Residues present in the sample, but not in the model, are shown in grey.

- Molecule 1: aldose reductase



4 Data and refinement statistics

Property	Value	Source
Space group	P 1 21 1	Depositor
Cell constants a, b, c, α , β , γ	50.14Å 67.34Å 47.88Å 90.00° 92.50° 90.00°	Depositor
Resolution (Å)	10.00 – 1.04 14.96 – 1.03	Depositor EDS
% Data completeness (in resolution range)	87.3 (10.00-1.04) 88.4 (14.96-1.03)	Depositor EDS
R_{merge}	(Not available)	Depositor
R_{sym}	0.04	Depositor
$\langle I/\sigma(I) \rangle$ ¹	1.23 (at 1.03Å)	Xtriage
Refinement program	SHELXL-97	Depositor
R, R_{free}	0.091 , 0.125 0.096 , 0.122	Depositor DCC
R_{free} test set	7189 reflections (5.00%)	wwPDB-VP
Wilson B-factor (Å ²)	8.5	Xtriage
Anisotropy	0.323	Xtriage
Bulk solvent k_{sol} (e/Å ³), B_{sol} (Å ²)	0.34 , 79.1	EDS
L-test for twinning ²	$\langle L \rangle = 0.50$, $\langle L^2 \rangle = 0.33$	Xtriage
Estimated twinning fraction	0.003 for -l,k,h 0.019 for -h,-k,l 0.016 for l,-k,h	Xtriage
F_o, F_c correlation	0.98	EDS
Total number of atoms	3446	wwPDB-VP
Average B, all atoms (Å ²)	17.0	wwPDB-VP

Xtriage's analysis on translational NCS is as follows: *The largest off-origin peak in the Patterson function is 13.80% of the height of the origin peak. No significant pseudotranslation is detected.*

¹Intensities estimated from amplitudes.

²Theoretical values of $\langle |L| \rangle$, $\langle L^2 \rangle$ for acentric reflections are 0.5, 0.333 respectively for untwinned datasets, and 0.375, 0.2 for perfectly twinned datasets.

5 Model quality

5.1 Standard geometry

Bond lengths and bond angles in the following residue types are not validated in this section: NDP, 3NA

The Z score for a bond length (or angle) is the number of standard deviations the observed value is removed from the expected value. A bond length (or angle) with $|Z| > 5$ is considered an outlier worth inspection. RMSZ is the root-mean-square of all Z scores of the bond lengths (or angles).

Mol	Chain	Bond lengths		Bond angles	
		RMSZ	$\# Z > 5$	RMSZ	$\# Z > 5$
1	A	2.05	2/3219 (0.1%)	1.44	32/4356 (0.7%)

Chiral center outliers are detected by calculating the chiral volume of a chiral center and verifying if the center is modelled as a planar moiety or with the opposite hand. A planarity outlier is detected by checking planarity of atoms in a peptide group, atoms in a mainchain group or atoms of a sidechain that are expected to be planar.

Mol	Chain	#Chirality outliers	#Planarity outliers
1	A	0	2

All (2) bond length outliers are listed below:

Mol	Chain	Res	Type	Atoms	Z	Observed(Å)	Ideal(Å)
1	A	60[A]	GLU	CG-CD	75.74	2.65	1.51
1	A	60[B]	GLU	CG-CD	75.74	2.65	1.51

All (32) bond angle outliers are listed below:

Mol	Chain	Res	Type	Atoms	Z	Observed(°)	Ideal(°)
1	A	60[A]	GLU	CG-CD-OE1	-26.61	65.07	118.30
1	A	60[B]	GLU	CG-CD-OE1	-26.61	65.07	118.30
1	A	60[A]	GLU	CG-CD-OE2	19.13	156.56	118.30
1	A	60[B]	GLU	CG-CD-OE2	19.13	156.56	118.30
1	A	60[A]	GLU	CB-CG-CD	-15.20	73.16	114.20
1	A	60[B]	GLU	CB-CG-CD	-15.20	73.16	114.20
1	A	3[A]	ARG	NE-CZ-NH2	-8.63	115.98	120.30
1	A	3[B]	ARG	NE-CZ-NH2	-8.63	115.98	120.30
1	A	0[A]	MET	CG-SD-CE	8.15	113.24	100.20
1	A	63[A]	ARG	CG-CD-NE	6.61	125.68	111.80
1	A	63[B]	ARG	CG-CD-NE	6.61	125.68	111.80

Continued on next page...

Continued from previous page...

Mol	Chain	Res	Type	Atoms	Z	Observed(°)	Ideal(°)
1	A	298[A]	CYS	CA-CB-SG	-6.41	102.47	114.00
1	A	298[B]	CYS	CA-CB-SG	-6.41	102.47	114.00
1	A	40[A]	ARG	NE-CZ-NH1	6.36	123.48	120.30
1	A	40[B]	ARG	NE-CZ-NH1	6.36	123.48	120.30
1	A	63[A]	ARG	CD-NE-CZ	6.17	132.25	123.60
1	A	63[B]	ARG	CD-NE-CZ	6.17	132.25	123.60
1	A	149	ASP	CB-CG-OD1	6.03	123.72	118.30
1	A	29[A]	GLU	OE1-CD-OE2	-5.75	116.39	123.30
1	A	29[B]	GLU	OE1-CD-OE2	-5.75	116.39	123.30
1	A	29[C]	GLU	OE1-CD-OE2	-5.75	116.39	123.30
1	A	115	PHE	CB-CG-CD1	5.52	124.67	120.80
1	A	70[A]	GLU	OE1-CD-OE2	5.45	129.84	123.30
1	A	70[B]	GLU	OE1-CD-OE2	5.45	129.84	123.30
1	A	209	TYR	CA-CB-CG	5.33	123.52	113.40
1	A	0[A]	MET	CA-CB-CG	5.22	122.17	113.30
1	A	0[A]	MET	CA-C-O	5.16	130.94	120.10
1	A	32	LYS	CD-CE-NZ	-5.15	99.86	111.70
1	A	136[A]	ASN	CA-CB-CG	-5.04	102.30	113.40
1	A	136[B]	ASN	CA-CB-CG	-5.04	102.30	113.40
1	A	136[A]	ASN	CB-CG-OD1	-5.04	111.52	121.60
1	A	136[B]	ASN	CB-CG-OD1	-5.04	111.52	121.60

There are no chirality outliers.

All (2) planarity outliers are listed below:

Mol	Chain	Res	Type	Group
1	A	40[A]	ARG	Mainchain
1	A	40[B]	ARG	Mainchain

5.2 Too-close contacts ⓘ

In the following table, the Non-H and H(model) columns list the number of non-hydrogen atoms and hydrogen atoms in the chain respectively. The H(added) column lists the number of hydrogen atoms added and optimized by MolProbity. The Clashes column lists the number of clashes within the asymmetric unit, whereas Symm-Clashes lists symmetry related clashes.

Mol	Chain	Non-H	H(model)	H(added)	Clashes	Symm-Clashes
1	A	2974	0	2963	47	0
2	A	48	0	26	3	0
3	A	26	0	10	1	0
4	A	398	0	0	18	0

Continued on next page...

Continued from previous page...

Mol	Chain	Non-H	H(model)	H(added)	Clashes	Symm-Clashes
All	All	3446	0	2999	47	0

The all-atom clashscore is defined as the number of clashes found per 1000 atoms (including hydrogen atoms). The all-atom clashscore for this structure is 8.

All (47) close contacts within the same asymmetric unit are listed below, sorted by their clash magnitude.

Atom-1	Atom-2	Interatomic distance (Å)	Clash overlap (Å)
1:A:60[A]:GLU:HG3	4:A:2242:HOH:O	1.82	0.79
1:A:85[B]:LYS:HE2	1:A:142:ALA:HB3	1.67	0.75
1:A:93[A]:GLN:HG2	4:A:2373:HOH:O	1.88	0.73
1:A:59[B]:GLN:HG2	4:A:2182:HOH:O	1.90	0.72
1:A:158[B]:ILE:HD13	1:A:181:VAL:O	1.91	0.70
1:A:70[B]:GLU:HG3	4:A:2243:HOH:O	1.93	0.67
1:A:119[B]:LYS:HG3	4:A:2353:HOH:O	1.97	0.63
1:A:119[B]:LYS:HE2	4:A:2353:HOH:O	2.01	0.60
1:A:217[A]:ARG:HD2	1:A:297[A]:VAL:HG13	1.84	0.60
1:A:209:TYR:CZ	2:A:318:NDP:H41N	2.37	0.59
1:A:194[B]:LYS:HE2	4:A:2374:HOH:O	2.03	0.58
1:A:146[A]:GLU:HG2	4:A:2320[A]:HOH:O	2.05	0.56
1:A:209:TYR:CE1	2:A:318:NDP:H41N	2.41	0.56
1:A:267[A]:GLU:HG2	4:A:2155:HOH:O	2.06	0.55
1:A:63[B]:ARG:HD3	4:A:2362:HOH:O	2.05	0.55
1:A:194[A]:LYS:HE3	1:A:314:GLU:OE2	2.06	0.55
1:A:15[B]:LEU:HD22	1:A:259:VAL:HG13	1.89	0.54
1:A:85[B]:LYS:HD3	1:A:143:ALA:HB2	1.90	0.53
1:A:136[A]:ASN:H	1:A:136[A]:ASN:ND2	2.08	0.51
1:A:164[B]:LEU:HD22	4:A:2212:HOH:O	2.12	0.49
1:A:217[A]:ARG:CD	1:A:297[A]:VAL:HG13	2.42	0.48
1:A:85[A]:LYS:HB3	1:A:85[A]:LYS:HE2	1.56	0.48
1:A:233:ILE:HG22	1:A:244[B]:THR:HG23	1.95	0.48
1:A:49:GLN:HG2	4:A:2398:HOH:O	2.13	0.48
1:A:293[A]:ARG:O	1:A:294[A]:ASN:HB2	2.14	0.47
1:A:291:TYR:O	1:A:293[A]:ARG:HG2	2.14	0.47
1:A:194[A]:LYS:HG3	4:A:2068:HOH:O	2.13	0.47
1:A:29[A]:GLU:OE1	1:A:32:LYS:HD3	2.15	0.46
1:A:20:TRP:CE3	1:A:21:LYS:HE3	2.51	0.46
1:A:137[B]:ILE:HG22	4:A:2244:HOH:O	2.15	0.46
1:A:217[B]:ARG:HD2	1:A:219:TRP:NE1	2.30	0.45
1:A:163[B]:HIS:HE1	4:A:2382:HOH:O	2.00	0.45
1:A:136[A]:ASN:ND2	4:A:2282:HOH:O	2.50	0.45

Continued on next page...

Continued from previous page...

Atom-1	Atom-2	Interatomic distance (Å)	Clash overlap (Å)
1:A:15[B]:LEU:HD21	1:A:249:ILE:CG2	2.47	0.45
1:A:225:PRO:HD2	1:A:295[B]:TRP:CZ2	2.53	0.44
1:A:241[A]:ASN:ND2	4:A:2376:HOH:O	2.49	0.44
1:A:68[B]:LYS:HB2	1:A:68[B]:LYS:HE2	1.76	0.43
1:A:307:LYS:HE2	4:A:2293:HOH:O	2.17	0.43
1:A:262:LYS:O	2:A:318:NDP:H8A	2.20	0.42
1:A:298[A]:CYS:SG	3:A:320:3NA:H16	2.59	0.42
1:A:242:LYS:HE3	1:A:278:PHE:CD1	2.55	0.41
1:A:158[B]:ILE:HD12	1:A:179:PRO:CB	2.51	0.41
1:A:63[A]:ARG:O	1:A:63[A]:ARG:HD3	2.20	0.41
1:A:181:VAL:HA	1:A:205:VAL:O	2.21	0.41

There are no symmetry-related clashes.

5.3 Torsion angles [i](#)

5.3.1 Protein backbone [i](#)

In the following table, the Percentiles column shows the percent Ramachandran outliers of the chain as a percentile score with respect to all X-ray entries followed by that with respect to entries of similar resolution.

The Analysed column shows the number of residues for which the backbone conformation was analysed, and the total number of residues.

Mol	Chain	Analysed	Favoured	Allowed	Outliers	Percentiles	
1	A	389/319 (122%)	385 (99%)	4 (1%)	0	100	100

There are no Ramachandran outliers to report.

5.3.2 Protein sidechains [i](#)

In the following table, the Percentiles column shows the percent sidechain outliers of the chain as a percentile score with respect to all X-ray entries followed by that with respect to entries of similar resolution.

The Analysed column shows the number of residues for which the sidechain conformation was analysed, and the total number of residues.

Mol	Chain	Analysed	Rotameric	Outliers	Percentiles
1	A	352/283 (124%)	341 (97%)	11 (3%)	43 10

All (11) residues with a non-rotameric sidechain are listed below:

Mol	Chain	Res	Type
1	A	0[A]	MET
1	A	29[A]	GLU
1	A	29[B]	GLU
1	A	29[C]	GLU
1	A	85[A]	LYS
1	A	85[B]	LYS
1	A	119[A]	LYS
1	A	119[B]	LYS
1	A	209	TYR
1	A	298[A]	CYS
1	A	298[B]	CYS

Some sidechains can be flipped to improve hydrogen bonding and reduce clashes. All (2) such sidechains are listed below:

Mol	Chain	Res	Type
1	A	49	GLN
1	A	283	GLN

5.3.3 RNA [i](#)

There are no RNA molecules in this entry.

5.4 Non-standard residues in protein, DNA, RNA chains [i](#)

There are no non-standard protein/DNA/RNA residues in this entry.

5.5 Carbohydrates [i](#)

There are no carbohydrates in this entry.

5.6 Ligand geometry [i](#)

2 ligands are modelled in this entry.

In the following table, the Counts columns list the number of bonds (or angles) for which Mogul statistics could be retrieved, the number of bonds (or angles) that are observed in the model and the number of bonds (or angles) that are defined in the Chemical Component Dictionary. The Link column lists molecule types, if any, to which the group is linked. The Z score for a bond length (or angle) is the number of standard deviations the observed value is removed from the expected value. A bond length (or angle) with $|Z| > 2$ is considered an outlier worth inspection. RMSZ is the root-mean-square of all Z scores of the bond lengths (or angles).

Mol	Type	Chain	Res	Link	Bond lengths			Bond angles		
					Counts	RMSZ	# $ Z > 2$	Counts	RMSZ	# $ Z > 2$
2	NDP	A	318	-	45,52,52	1.12	2 (4%)	54,80,80	1.02	4 (7%)
3	3NA	A	320	-	18,29,29	1.74	3 (16%)	19,43,43	1.80	5 (26%)

In the following table, the Chirals column lists the number of chiral outliers, the number of chiral centers analysed, the number of these observed in the model and the number defined in the Chemical Component Dictionary. Similar counts are reported in the Torsion and Rings columns. '-' means no outliers of that kind were identified.

Mol	Type	Chain	Res	Link	Chirals	Torsions	Rings
2	NDP	A	318	-	-	0/30/77/77	0/5/5/5
3	3NA	A	320	-	-	0/5/8/8	0/4/4/4

All (5) bond length outliers are listed below:

Mol	Chain	Res	Type	Atoms	Z	Observed(Å)	Ideal(Å)
2	A	318	NDP	C4N-C5N	-4.03	1.40	1.49
3	A	320	3NA	C20-N15	-2.24	1.45	1.49
3	A	320	3NA	C17-C13	2.18	1.53	1.50
2	A	318	NDP	C6N-C5N	2.85	1.38	1.33
3	A	320	3NA	C6-C5	5.16	1.50	1.38

All (9) bond angle outliers are listed below:

Mol	Chain	Res	Type	Atoms	Z	Observed(°)	Ideal(°)
3	A	320	3NA	C6-C3-C7	-3.83	115.62	120.89
2	A	318	NDP	C3N-C2N-N1N	-2.68	119.23	123.09
3	A	320	3NA	C3-C7-C11	-2.54	129.75	134.42
2	A	318	NDP	C1D-N1N-C2N	-2.44	116.98	121.10
3	A	320	3NA	C29-C26-C24	-2.40	118.96	120.94
3	A	320	3NA	C2-C4-C7	2.09	123.78	120.94
2	A	318	NDP	C5A-C6A-N6A	2.30	125.17	120.47
2	A	318	NDP	PN-O3-PA	2.57	141.28	132.63
3	A	320	3NA	C28-C27-S14	3.21	130.15	124.70

There are no chirality outliers.

There are no torsion outliers.

There are no ring outliers.

2 monomers are involved in 4 short contacts:

Mol	Chain	Res	Type	Clashes	Symm-Clashes
2	A	318	NDP	3	0
3	A	320	3NA	1	0

5.7 Other polymers [i](#)

There are no such residues in this entry.

5.8 Polymer linkage issues [i](#)

There are no chain breaks in this entry.

6 Fit of model and data [i](#)

6.1 Protein, DNA and RNA chains [i](#)

In the following table, the column labelled ‘#RSRZ > 2’ contains the number (and percentage) of RSRZ outliers, followed by percent RSRZ outliers for the chain as percentile scores relative to all X-ray entries and entries of similar resolution. The OWAB column contains the minimum, median, 95th percentile and maximum values of the occupancy-weighted average B-factor per residue. The column labelled ‘Q < 0.9’ lists the number of (and percentage) of residues with an average occupancy less than 0.9.

Mol	Chain	Analysed	<RSRZ>	#RSRZ>2	OWAB(Å ²)	Q<0.9
1	A	316/319 (99%)	-0.31	4 (1%) 77 70	7, 13, 27, 49	8 (2%)

All (4) RSRZ outliers are listed below:

Mol	Chain	Res	Type	RSRZ
1	A	222	PRO	3.0
1	A	223	GLU	2.5
1	A	126	GLU	2.2
1	A	0[A]	MET	2.1

6.2 Non-standard residues in protein, DNA, RNA chains [i](#)

There are no non-standard protein/DNA/RNA residues in this entry.

6.3 Carbohydrates [i](#)

There are no carbohydrates in this entry.

6.4 Ligands [i](#)

In the following table, the Atoms column lists the number of modelled atoms in the group and the number defined in the chemical component dictionary. The B-factors column lists the minimum, median, 95th percentile and maximum values of B factors of atoms in the group. The column labelled ‘Q < 0.9’ lists the number of atoms with occupancy less than 0.9.

Mol	Type	Chain	Res	Atoms	RSCC	RSR	B-factors(Å ²)	Q<0.9
3	3NA	A	320	26/26	0.99	0.04	8,10,14,18	0
2	NDP	A	318	48/48	0.99	0.04	6,8,11,12	0

6.5 Other polymers [i](#)

There are no such residues in this entry.