



Full wwPDB X-ray Structure Validation Report ⓘ

Sep 25, 2018 – 07:53 PM EDT

PDB ID : 4ZCA
Title : Eg5 motor domain mutant Y231F
Authors : Luo, M.; Parke, C.; Worthylake, D.
Deposited on : 2015-04-15
Resolution : 2.30 Å(reported)

This is a Full wwPDB X-ray Structure Validation Report for a publicly released PDB entry.

We welcome your comments at validation@mail.wwpdb.org

A user guide is available at

<https://www.wwpdb.org/validation/2017/XrayValidationReportHelp>

with specific help available everywhere you see the ⓘ symbol.

The following versions of software and data (see [references ⓘ](#)) were used in the production of this report:

MolProbity : 4.02b-467
Mogul : 1.7.3 (157068), CSD as539be (2018)
Xtriage (Phenix) : 1.13
EDS : rb-20031172
Percentile statistics : 20171227.v01 (using entries in the PDB archive December 27th 2017)
Refmac : 5.8.0158
CCP4 : 7.0 (Gargrove)
Ideal geometry (proteins) : Engh & Huber (2001)
Ideal geometry (DNA, RNA) : Parkinson et al. (1996)
Validation Pipeline (wwPDB-VP) : rb-20031172

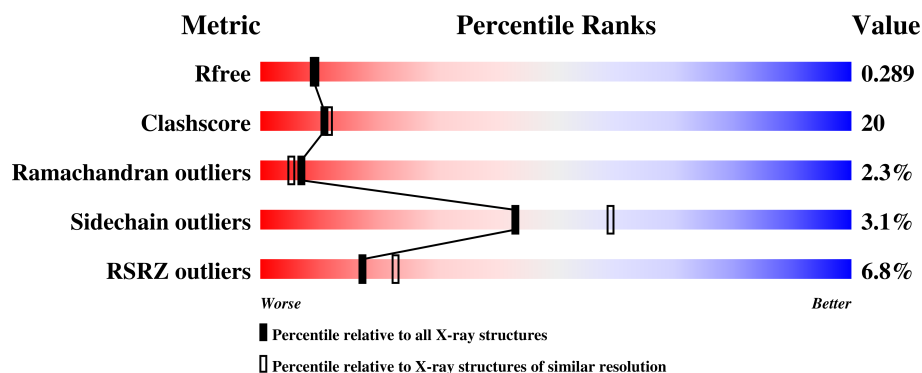
1 Overall quality at a glance

The following experimental techniques were used to determine the structure:

X-RAY DIFFRACTION

The reported resolution of this entry is 2.30 Å.

Percentile scores (ranging between 0-100) for global validation metrics of the entry are shown in the following graphic. The table shows the number of entries on which the scores are based.



Metric	Whole archive (#Entries)	Similar resolution (#Entries, resolution range(Å))
R_{free}	111664	4477 (2.30-2.30)
Clashscore	122126	5072 (2.30-2.30)
Ramachandran outliers	120053	5022 (2.30-2.30)
Sidechain outliers	120020	5021 (2.30-2.30)
RSRZ outliers	108989	4374 (2.30-2.30)

The table below summarises the geometric issues observed across the polymeric chains and their fit to the electron density. The red, orange, yellow and green segments on the lower bar indicate the fraction of residues that contain outliers for ≥ 3 , 2, 1 and 0 types of geometric quality criteria. A grey segment represents the fraction of residues that are not modelled. The numeric value for each fraction is indicated below the corresponding segment, with a dot representing fractions $\leq 5\%$. The upper red bar (where present) indicates the fraction of residues that have poor fit to the electron density. The numeric value is given above the bar.

Mol	Chain	Length	Quality of chain
1	A	369	<div> <div>8%</div> <div>59%</div> <div>29%</div> <div>•</div> <div>9%</div> </div>
1	B	369	<div> <div>5%</div> <div>60%</div> <div>26%</div> <div>•</div> <div>11%</div> </div>

2 Entry composition [i](#)

There are 4 unique types of molecules in this entry. The entry contains 5381 atoms, of which 0 are hydrogens and 0 are deuteriums.

In the tables below, the ZeroOcc column contains the number of atoms modelled with zero occupancy, the AltConf column contains the number of residues with at least one atom in alternate conformation and the Trace column contains the number of residues modelled with at most 2 atoms.

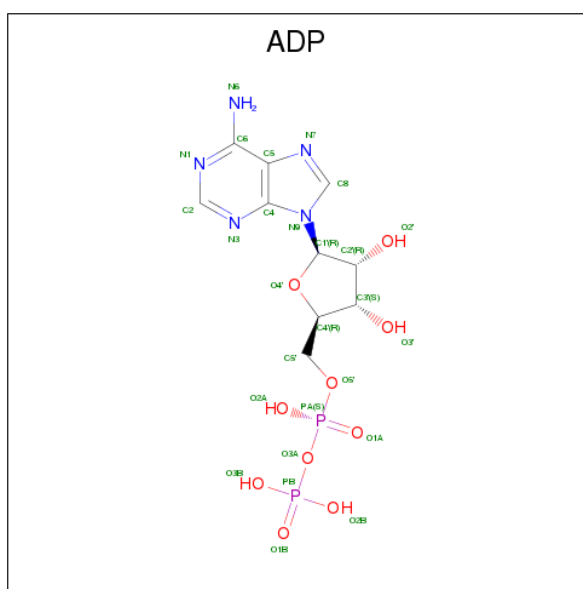
- Molecule 1 is a protein called Kinesin-like protein KIF11.

Mol	Chain	Residues	Atoms					ZeroOcc	AltConf	Trace
1	A	334	Total	C	N	O	S	0	0	0
			2616	1640	458	508	10			
1	B	329	Total	C	N	O	S	0	0	0
			2569	1613	446	500	10			

There are 2 discrepancies between the modelled and reference sequences:

Chain	Residue	Modelled	Actual	Comment	Reference
A	231	PHE	TYR	engineered mutation	UNP P52732
B	231	PHE	TYR	engineered mutation	UNP P52732

- Molecule 2 is ADENOSINE-5'-DIPHOSPHATE (three-letter code: ADP) (formula: $C_{10}H_{15}N_5O_{10}P_2$).



Mol	Chain	Residues	Atoms					ZeroOcc	AltConf
2	A	1	Total	C	N	O	P	0	0
			27	10	5	10	2		

Continued on next page...

Continued from previous page...

Mol	Chain	Residues	Atoms					ZeroOcc	AltConf
2	B	1	Total	C	N	O	P	0	0
			27	10	5	10	2		

- Molecule 3 is MAGNESIUM ION (three-letter code: MG) (formula: Mg).

Mol	Chain	Residues	Atoms		ZeroOcc	AltConf
3	B	1	Total	Mg	0	0
			1	1		
3	A	1	Total	Mg	0	0
			1	1		

- Molecule 4 is water.

Mol	Chain	Residues	Atoms		ZeroOcc	AltConf
4	A	64	Total	O	0	0
			64	64		
4	B	76	Total	O	0	0
			76	76		

4 Data and refinement statistics

Property	Value	Source
Space group	P 1 21 1	Depositor
Cell constants a, b, c, α , β , γ	52.54Å 77.83Å 93.12Å 90.00° 93.90° 90.00°	Depositor
Resolution (Å)	25.00 – 2.30 24.99 – 2.30	Depositor EDS
% Data completeness (in resolution range)	(Not available) (25.00-2.30) 97.8 (24.99-2.30)	Depositor EDS
R_{merge}	0.12	Depositor
R_{sym}	(Not available)	Depositor
$\langle I/\sigma(I) \rangle$ ¹	2.07 (at 2.31Å)	Xtriage
Refinement program	CNS	Depositor
R, R_{free}	0.246 , 0.289 0.246 , 0.289	Depositor DCC
R_{free} test set	1313 reflections (4.02%)	wwPDB-VP
Wilson B-factor (Å ²)	26.5	Xtriage
Anisotropy	0.467	Xtriage
Bulk solvent k_{sol} (e/Å ³), B_{sol} (Å ²)	0.32 , 20.5	EDS
L-test for twinning ²	$\langle L \rangle = 0.49$, $\langle L^2 \rangle = 0.32$	Xtriage
Estimated twinning fraction	No twinning to report.	Xtriage
F_o, F_c correlation	0.91	EDS
Total number of atoms	5381	wwPDB-VP
Average B, all atoms (Å ²)	40.0	wwPDB-VP

Xtriage's analysis on translational NCS is as follows: *The largest off-origin peak in the Patterson function is 5.44% of the height of the origin peak. No significant pseudotranslation is detected.*

¹Intensities estimated from amplitudes.

²Theoretical values of $\langle |L| \rangle$, $\langle L^2 \rangle$ for acentric reflections are 0.5, 0.333 respectively for untwinned datasets, and 0.375, 0.2 for perfectly twinned datasets.

5 Model quality

5.1 Standard geometry

Bond lengths and bond angles in the following residue types are not validated in this section: MG, ADP

The Z score for a bond length (or angle) is the number of standard deviations the observed value is removed from the expected value. A bond length (or angle) with $|Z| > 5$ is considered an outlier worth inspection. RMSZ is the root-mean-square of all Z scores of the bond lengths (or angles).

Mol	Chain	Bond lengths		Bond angles	
		RMSZ	# Z >5	RMSZ	# Z >5
1	A	0.38	0/2653	0.63	0/3583
1	B	0.43	0/2606	0.66	0/3521
All	All	0.41	0/5259	0.65	0/7104

There are no bond length outliers.

There are no bond angle outliers.

There are no chirality outliers.

There are no planarity outliers.

5.2 Too-close contacts

In the following table, the Non-H and H(model) columns list the number of non-hydrogen atoms and hydrogen atoms in the chain respectively. The H(added) column lists the number of hydrogen atoms added and optimized by MolProbity. The Clashes column lists the number of clashes within the asymmetric unit, whereas Symm-Clashes lists symmetry related clashes.

Mol	Chain	Non-H	H(model)	H(added)	Clashes	Symm-Clashes
1	A	2616	0	2651	121	0
1	B	2569	0	2595	92	0
2	A	27	0	12	2	0
2	B	27	0	12	1	0
3	A	1	0	0	0	0
3	B	1	0	0	0	0
4	A	64	0	0	5	0
4	B	76	0	0	3	0
All	All	5381	0	5270	205	0

The all-atom clashscore is defined as the number of clashes found per 1000 atoms (including hydrogen atoms). The all-atom clashscore for this structure is 20.

All (205) close contacts within the same asymmetric unit are listed below, sorted by their clash magnitude.

Atom-1	Atom-2	Interatomic distance (Å)	Clash overlap (Å)
1:A:92:GLU:HG3	1:A:329:ARG:HG3	1.32	1.08
1:A:207:LYS:HB2	1:A:207:LYS:HZ2	1.27	1.00
1:B:323:SER:O	1:B:328:THR:HG21	1.66	0.96
1:A:178:VAL:HG12	1:A:179:SER:H	1.34	0.89
1:A:327:ARG:HA	1:A:327:ARG:CZ	2.10	0.82
1:B:60:LYS:NZ	1:B:62:SER:HA	1.95	0.81
1:B:103:ALA:HB2	1:B:115:MET:HE3	1.64	0.79
1:A:323:SER:O	1:A:328:THR:HG21	1.86	0.76
1:A:129:GLU:OE2	1:A:141:HIS:CE1	2.39	0.76
1:B:16:GLY:HA3	1:B:357:LYS:HE3	1.67	0.75
1:A:55:GLY:HA3	1:A:59:ASP:O	1.87	0.75
1:B:86:VAL:HG21	1:B:135:ILE:HD12	1.69	0.75
1:A:129:GLU:HG2	1:A:141:HIS:CE1	2.23	0.73
1:A:177:ASP:CG	1:A:220:LYS:HE3	2.08	0.72
1:A:327:ARG:NE	1:A:327:ARG:HA	2.02	0.72
1:A:184:MET:HG3	1:A:194:VAL:HG11	1.70	0.72
1:B:207:LYS:O	1:B:210:VAL:HG23	1.88	0.72
1:A:92:GLU:CG	1:A:329:ARG:HG3	2.15	0.71
2:A:601:ADP:H3'	1:B:34:LYS:HE2	1.72	0.71
1:B:60:LYS:HZ1	1:B:62:SER:HA	1.54	0.71
1:A:168:LEU:HD13	1:A:181:ARG:HH21	1.56	0.71
1:A:60:LYS:NZ	1:B:229:ASN:ND2	2.40	0.69
1:A:227:LEU:O	1:A:228:MET:HB2	1.91	0.69
1:B:40:ILE:HD13	1:B:343:LEU:HD23	1.73	0.69
1:A:177:ASP:OD2	1:A:220:LYS:HE3	1.92	0.69
1:B:184:MET:HE3	1:B:194:VAL:HG11	1.75	0.68
1:A:178:VAL:HG12	1:A:179:SER:N	2.09	0.67
1:A:207:LYS:NZ	1:A:207:LYS:HB2	2.07	0.67
1:A:57:LEU:HB2	1:B:164:TYR:CE2	2.30	0.66
1:A:60:LYS:HZ1	1:B:229:ASN:ND2	1.93	0.66
1:B:53:ARG:HG2	1:B:55:GLY:O	1.96	0.66
1:A:83:ARG:HG3	1:A:83:ARG:HH11	1.60	0.65
1:A:57:LEU:HB2	1:B:164:TYR:HE2	1.59	0.65
1:A:207:LYS:O	1:A:210:VAL:HG23	1.96	0.65
1:A:103:ALA:HB2	1:A:115:MET:CE	2.26	0.65
1:B:83:ARG:HG3	1:B:83:ARG:HH11	1.60	0.64
1:B:310:PRO:HB3	1:B:313:GLU:OE2	1.96	0.64
1:A:18:ASN:HB3	1:A:328:THR:O	1.97	0.64
1:B:57:LEU:HD22	1:B:57:LEU:H	1.62	0.64
1:B:163:ILE:HG22	4:B:767:HOH:O	1.99	0.63

Continued on next page...

Continued from previous page...

Atom-1	Atom-2	Interatomic distance (Å)	Clash overlap (Å)
1:A:243:ILE:N	1:A:243:ILE:HD12	2.13	0.63
1:A:129:GLU:OE2	1:A:141:HIS:ND1	2.31	0.63
1:A:92:GLU:HG3	1:A:329:ARG:CG	2.21	0.63
1:A:245:MET:HB2	1:A:257:LYS:HG3	1.79	0.62
1:A:141:HIS:CE1	1:A:207:LYS:HZ3	2.15	0.62
1:A:103:ALA:HB2	1:A:115:MET:HE3	1.80	0.62
1:A:86:VAL:HG21	1:A:135:ILE:HD12	1.82	0.62
1:A:207:LYS:HD3	1:A:208:ASP:N	2.16	0.61
1:B:37:ALA:HB1	1:B:339:ALA:HB1	1.83	0.61
1:B:178:VAL:HG21	1:B:224:ALA:HA	1.83	0.61
1:A:181:ARG:HD3	1:A:182:LEU:O	2.01	0.61
1:B:150:ASN:HD22	1:B:150:ASN:C	2.05	0.60
1:A:254:GLU:O	1:A:255:LEU:HD23	2.02	0.60
1:B:129:GLU:CD	1:B:141:HIS:ND1	2.55	0.59
1:B:103:ALA:HB2	1:B:115:MET:CE	2.33	0.59
1:A:29:ASN:OD1	1:A:32:GLU:HG3	2.02	0.59
1:B:364:GLU:H	1:B:364:GLU:CD	2.06	0.59
1:B:87:CYS:HB2	1:B:88:PRO:HD3	1.85	0.58
1:B:209:GLU:O	1:B:213:ILE:HG12	2.03	0.58
1:A:362:LYS:NZ	1:A:362:LYS:H	2.00	0.58
1:B:244:HIS:CD2	1:B:258:ILE:HD12	2.39	0.58
1:A:187:ASP:HB3	1:A:195:ILE:HG13	1.86	0.57
1:A:17:LYS:NZ	1:A:17:LYS:HB3	2.18	0.57
1:B:168:LEU:HD21	1:B:319:ILE:HD11	1.87	0.57
1:B:60:LYS:HZ3	1:B:62:SER:HA	1.67	0.57
1:A:209:GLU:O	1:A:213:ILE:HG12	2.05	0.56
1:B:83:ARG:NH1	1:B:83:ARG:HG3	2.19	0.56
1:B:90:LEU:O	1:B:94:ILE:HG12	2.06	0.56
1:B:40:ILE:HD12	1:B:41:VAL:HG23	1.87	0.56
1:A:60:LYS:NZ	1:B:229:ASN:HD21	2.02	0.55
1:A:28:PHE:HB3	4:A:718:HOH:O	2.05	0.55
1:A:28:PHE:HD2	4:A:718:HOH:O	1.90	0.55
1:A:83:ARG:HG3	1:A:83:ARG:NH1	2.21	0.55
1:A:168:LEU:H	1:A:181:ARG:HE	1.53	0.55
1:A:175:SER:O	1:A:177:ASP:N	2.39	0.55
1:A:223:THR:HG23	1:A:227:LEU:HD23	1.88	0.55
1:B:244:HIS:CD2	1:B:258:ILE:CD1	2.90	0.55
1:A:87:CYS:HB2	1:A:88:PRO:HD3	1.89	0.55
1:B:19:ILE:HD11	1:B:302:LEU:HB3	1.89	0.55
1:B:362:LYS:NZ	1:B:362:LYS:H	2.05	0.54
1:A:22:VAL:HG12	1:A:70:MET:HB2	1.90	0.53

Continued on next page...

Continued from previous page...

Atom-1	Atom-2	Interatomic distance (Å)	Clash overlap (Å)
1:A:344:GLU:HB2	4:A:731:HOH:O	2.07	0.53
1:B:289:ASN:ND2	1:B:290:GLN:H	2.07	0.53
1:A:140:LEU:CB	1:A:210:VAL:HG21	2.38	0.53
1:B:184:MET:CE	1:B:194:VAL:HG11	2.38	0.53
1:B:50:VAL:HG23	1:B:66:TYR:HB2	1.90	0.52
1:A:184:MET:HG3	1:A:194:VAL:CG1	2.37	0.52
1:A:166:GLU:HG2	1:A:287:ASN:HB3	1.92	0.52
1:B:28:PHE:HZ	1:B:39:SER:HB2	1.75	0.52
1:B:181:ARG:HH22	1:B:228:MET:HE1	1.75	0.52
1:A:89:ILE:O	1:A:92:GLU:HB2	2.09	0.51
1:A:181:ARG:NH2	1:A:315:LYS:NZ	2.59	0.51
1:A:175:SER:O	1:A:176:SER:C	2.49	0.51
1:A:260:LYS:HE2	1:A:262:ASN:HD21	1.74	0.51
1:B:178:VAL:CG2	1:B:224:ALA:HA	2.40	0.51
1:B:140:LEU:CB	1:B:210:VAL:HG21	2.41	0.51
1:A:57:LEU:HD23	1:B:167:GLU:OE1	2.11	0.51
1:B:125:TYR:CD1	1:B:125:TYR:N	2.78	0.50
1:A:226:THR:OG1	1:A:227:LEU:HD22	2.11	0.50
1:A:57:LEU:O	1:A:58:ALA:HB3	2.11	0.50
1:B:18:ASN:HB3	1:B:328:THR:O	2.11	0.50
1:B:260:LYS:HE2	1:B:262:ASN:HD21	1.77	0.50
1:A:207:LYS:CB	1:A:207:LYS:HZ2	2.11	0.49
1:B:228:MET:O	1:B:229:ASN:HB2	2.13	0.49
1:B:51:SER:HB2	1:B:63:ARG:HD2	1.93	0.49
1:A:86:VAL:HG21	1:A:135:ILE:HG23	1.94	0.49
1:B:16:GLY:C	1:B:17:LYS:HG2	2.32	0.49
1:A:191:LYS:HG2	1:A:192:ARG:HG3	1.95	0.49
1:A:234:ARG:NH1	1:A:270:GLU:OE2	2.43	0.49
1:B:150:ASN:C	1:B:150:ASN:ND2	2.63	0.49
1:B:28:PHE:CZ	1:B:39:SER:HB2	2.48	0.49
1:B:243:ILE:N	1:B:243:ILE:HD13	2.27	0.48
1:A:137:PRO:O	1:A:141:HIS:HB2	2.12	0.48
1:A:167:GLU:HB3	1:A:181:ARG:HG3	1.95	0.48
1:A:161:LEU:HD12	1:A:161:LEU:C	2.33	0.48
1:B:237:SER:HB3	1:B:265:ASP:HB3	1.95	0.48
1:A:237:SER:HB3	1:A:265:ASP:HB3	1.96	0.48
1:A:30:LEU:HG	1:A:34:LYS:HE2	1.95	0.48
1:A:241:VAL:HG22	1:A:243:ILE:HD11	1.96	0.48
1:A:327:ARG:HA	1:A:327:ARG:NH1	2.29	0.47
1:A:60:LYS:HZ2	1:B:229:ASN:ND2	2.12	0.47
1:B:23:VAL:HG22	1:B:334:ALA:HB3	1.96	0.47

Continued on next page...

Continued from previous page...

Atom-1	Atom-2	Interatomic distance (Å)	Clash overlap (Å)
1:A:310:PRO:HB3	1:A:313:GLU:OE2	2.15	0.47
1:B:50:VAL:HG21	1:B:68:PHE:HE2	1.80	0.47
1:A:246:LYS:HA	1:A:255:LEU:O	2.14	0.47
1:A:307:PRO:O	1:A:308:HIS:HB3	2.15	0.47
1:A:191:LYS:O	1:A:192:ARG:HB2	2.14	0.47
1:B:68:PHE:HA	1:B:359:ILE:HD12	1.95	0.47
1:B:19:ILE:HD11	1:B:302:LEU:CB	2.44	0.47
1:A:22:VAL:CG1	1:A:70:MET:HB2	2.45	0.46
1:B:161:LEU:C	1:B:161:LEU:HD12	2.35	0.46
1:A:103:ALA:HB2	1:A:115:MET:HE1	1.97	0.46
1:A:86:VAL:CG2	1:A:135:ILE:HD12	2.46	0.46
1:A:194:VAL:HG23	1:A:318:ARG:NH1	2.31	0.46
1:B:79:ILE:O	1:B:83:ARG:HG2	2.15	0.46
1:A:309:VAL:HB	1:A:311:TYR:CE1	2.51	0.46
1:B:241:VAL:HG22	1:B:243:ILE:CD1	2.46	0.46
1:A:79:ILE:O	1:A:83:ARG:HG2	2.16	0.46
1:B:299:ILE:HG21	1:B:356:ALA:HB1	1.96	0.45
1:A:243:ILE:CD1	1:A:243:ILE:N	2.79	0.45
1:B:364:GLU:O	1:B:365:VAL:C	2.53	0.45
1:B:89:ILE:O	1:B:92:GLU:HB3	2.16	0.45
1:A:243:ILE:HG22	1:A:245:MET:HG3	1.98	0.45
1:A:68:PHE:HA	1:A:359:ILE:HD12	1.98	0.45
1:B:57:LEU:CD2	1:B:57:LEU:H	2.29	0.45
1:B:57:LEU:HD13	1:B:60:LYS:HD2	1.99	0.45
1:B:164:TYR:HB2	1:B:235:SER:OG	2.17	0.45
1:A:33:ARG:HG2	4:A:718:HOH:O	2.16	0.45
1:B:160:LEU:HB3	1:B:172:LEU:HG	1.97	0.45
1:B:104:TYR:C	1:B:104:TYR:CD1	2.89	0.45
1:A:126:THR:HG22	1:A:127:TRP:N	2.32	0.44
1:A:178:VAL:CG1	1:A:179:SER:H	2.10	0.44
1:A:104:TYR:CD1	1:A:104:TYR:C	2.91	0.44
1:A:94:ILE:HD12	1:A:146:LYS:HE3	2.00	0.44
1:A:57:LEU:CD2	1:B:167:GLU:OE1	2.65	0.44
1:B:362:LYS:HZ2	1:B:362:LYS:H	1.65	0.44
2:B:601:ADP:H2'	2:B:601:ADP:H5'2	1.64	0.43
1:A:79:ILE:O	1:A:79:ILE:HG13	2.18	0.43
1:B:250:ILE:O	1:B:251:ASP:HB2	2.18	0.43
1:A:183:GLN:HG2	1:A:185:PHE:HD2	1.83	0.43
1:B:135:ILE:HD13	4:B:775:HOH:O	2.18	0.43
1:A:106:GLN:HE22	1:A:342:ASN:ND2	2.16	0.43
1:A:298:VAL:HG13	1:A:309:VAL:CG1	2.49	0.43

Continued on next page...

Continued from previous page...

Atom-1	Atom-2	Interatomic distance (Å)	Clash overlap (Å)
1:A:191:LYS:N	1:A:191:LYS:HD3	2.33	0.43
1:A:228:MET:N	1:B:56:GLY:HA3	2.34	0.43
1:B:183:GLN:HG2	4:B:734:HOH:O	2.18	0.43
1:B:191:LYS:H	1:B:191:LYS:HD2	1.84	0.43
1:B:35:ALA:O	1:B:36:SER:HB2	2.19	0.43
1:B:191:LYS:HE2	1:B:191:LYS:N	2.34	0.42
1:A:140:LEU:HB3	1:A:210:VAL:HG21	1.99	0.42
1:A:364:GLU:O	1:A:365:VAL:HB	2.19	0.42
1:B:269:SER:C	1:B:271:ASN:H	2.22	0.42
1:A:129:GLU:HG2	1:A:141:HIS:NE2	2.35	0.42
1:A:17:LYS:HB3	1:A:17:LYS:HZ3	1.82	0.42
1:A:241:VAL:HG22	1:A:243:ILE:CD1	2.50	0.42
1:A:60:LYS:HZ1	1:B:229:ASN:HD21	1.58	0.42
1:A:175:SER:C	1:A:177:ASP:N	2.73	0.42
1:A:211:TYR:O	1:A:215:GLU:HG3	2.20	0.42
1:B:241:VAL:HG22	1:B:243:ILE:HD11	2.00	0.42
1:A:141:HIS:CE1	1:A:207:LYS:NZ	2.87	0.42
1:A:168:LEU:HD13	1:A:181:ARG:NH2	2.30	0.42
1:B:126:THR:HG23	1:B:127:TRP:CE3	2.55	0.42
1:B:150:ASN:ND2	1:B:152:THR:H	2.17	0.42
1:A:168:LEU:HD21	1:A:319:ILE:HD11	2.02	0.41
1:A:184:MET:CE	1:A:318:ARG:HG2	2.50	0.41
1:B:129:GLU:O	1:B:130:ASP:C	2.59	0.41
2:A:601:ADP:H2'	2:A:601:ADP:H5'2	1.65	0.41
1:B:344:GLU:H	1:B:344:GLU:CD	2.24	0.41
1:B:129:GLU:OE2	1:B:138:ARG:HA	2.20	0.41
1:A:160:LEU:HB3	1:A:172:LEU:HG	2.01	0.41
1:A:17:LYS:NZ	1:A:17:LYS:CB	2.83	0.41
1:B:293:LEU:HA	1:B:293:LEU:HD12	1.86	0.41
1:B:40:ILE:HG12	1:B:340:SER:HA	2.03	0.41
1:B:140:LEU:HB3	1:B:210:VAL:HG21	2.03	0.41
1:A:129:GLU:CG	1:A:141:HIS:CE1	2.99	0.41
1:A:138:ARG:O	1:A:141:HIS:HB3	2.20	0.41
1:A:185:PHE:HD1	1:A:186:ASP:O	2.04	0.41
1:A:248:THR:HG22	1:A:249:THR:N	2.36	0.41
1:B:185:PHE:HE2	1:B:197:LYS:HD2	1.86	0.41
1:A:134:GLY:O	1:A:137:PRO:HD2	2.21	0.40
1:A:20:GLN:HB2	4:A:704:HOH:O	2.21	0.40
1:A:362:LYS:H	1:A:362:LYS:HZ3	1.66	0.40
1:A:189:ARG:HD2	1:A:190:ASN:H	1.86	0.40
1:A:181:ARG:NH2	1:A:315:LYS:HZ2	2.19	0.40

Continued on next page...

Continued from previous page...

Atom-1	Atom-2	Interatomic distance (Å)	Clash overlap (Å)
1:A:194:VAL:HG21	1:A:318:ARG:HG3	2.02	0.40

There are no symmetry-related clashes.

5.3 Torsion angles [i](#)

5.3.1 Protein backbone [i](#)

In the following table, the Percentiles column shows the percent Ramachandran outliers of the chain as a percentile score with respect to all X-ray entries followed by that with respect to entries of similar resolution.

The Analysed column shows the number of residues for which the backbone conformation was analysed, and the total number of residues.

Mol	Chain	Analysed	Favoured	Allowed	Outliers	Percentiles	
1	A	328/369 (89%)	302 (92%)	18 (6%)	8 (2%)	6	5
1	B	323/369 (88%)	303 (94%)	13 (4%)	7 (2%)	7	5
All	All	651/738 (88%)	605 (93%)	31 (5%)	15 (2%)	7	5

All (15) Ramachandran outliers are listed below:

Mol	Chain	Res	Type
1	A	176	SER
1	A	186	ASP
1	A	191	LYS
1	A	228	MET
1	B	57	LEU
1	B	60	LYS
1	A	178	VAL
1	B	58	ALA
1	A	253	GLU
1	A	282	ALA
1	B	62	SER
1	B	176	SER
1	B	207	LYS
1	B	307	PRO
1	A	188	PRO

5.3.2 Protein sidechains ⓘ

In the following table, the Percentiles column shows the percent sidechain outliers of the chain as a percentile score with respect to all X-ray entries followed by that with respect to entries of similar resolution.

The Analysed column shows the number of residues for which the sidechain conformation was analysed, and the total number of residues.

Mol	Chain	Analysed	Rotameric	Outliers	Percentiles	
1	A	293/323 (91%)	284 (97%)	9 (3%)	43	59
1	B	288/323 (89%)	279 (97%)	9 (3%)	43	59
All	All	581/646 (90%)	563 (97%)	18 (3%)	43	59

All (18) residues with a non-rotameric sidechain are listed below:

Mol	Chain	Res	Type
1	A	79	ILE
1	A	128	GLU
1	A	191	LYS
1	A	195	ILE
1	A	207	LYS
1	A	243	ILE
1	A	290	GLN
1	A	293	LEU
1	A	327	ARG
1	B	50	VAL
1	B	79	ILE
1	B	125	TYR
1	B	141	HIS
1	B	150	ASN
1	B	191	LYS
1	B	243	ILE
1	B	293	LEU
1	B	363	PRO

Some sidechains can be flipped to improve hydrogen bonding and reduce clashes. All (17) such sidechains are listed below:

Mol	Chain	Res	Type
1	A	20	GLN
1	A	38	HIS
1	A	98	ASN
1	A	183	GLN

Continued on next page...

Continued from previous page...

Mol	Chain	Res	Type
1	A	212	GLN
1	A	262	ASN
1	A	290	GLN
1	A	321	GLN
1	A	342	ASN
1	B	150	ASN
1	B	212	GLN
1	B	229	ASN
1	B	262	ASN
1	B	289	ASN
1	B	290	GLN
1	B	321	GLN
1	B	342	ASN

5.3.3 RNA [i](#)

There are no RNA molecules in this entry.

5.4 Non-standard residues in protein, DNA, RNA chains [i](#)

There are no non-standard protein/DNA/RNA residues in this entry.

5.5 Carbohydrates [i](#)

There are no carbohydrates in this entry.

5.6 Ligand geometry [i](#)

Of 4 ligands modelled in this entry, 2 are monoatomic - leaving 2 for Mogul analysis.

In the following table, the Counts columns list the number of bonds (or angles) for which Mogul statistics could be retrieved, the number of bonds (or angles) that are observed in the model and the number of bonds (or angles) that are defined in the Chemical Component Dictionary. The Link column lists molecule types, if any, to which the group is linked. The Z score for a bond length (or angle) is the number of standard deviations the observed value is removed from the expected value. A bond length (or angle) with $|Z| > 2$ is considered an outlier worth inspection. RMSZ is the root-mean-square of all Z scores of the bond lengths (or angles).

Mol	Type	Chain	Res	Link	Bond lengths			Bond angles		
					Counts	RMSZ	$\# Z > 2$	Counts	RMSZ	$\# Z > 2$
2	ADP	A	601	3	25,29,29	1.71	6 (24%)	25,45,45	2.98	6 (24%)

Mol	Type	Chain	Res	Link	Bond lengths			Bond angles		
					Counts	RMSZ	# Z > 2	Counts	RMSZ	# Z > 2
2	ADP	B	601	3	25,29,29	1.76	5 (20%)	25,45,45	3.05	5 (20%)

In the following table, the Chirals column lists the number of chiral outliers, the number of chiral centers analysed, the number of these observed in the model and the number defined in the Chemical Component Dictionary. Similar counts are reported in the Torsion and Rings columns. '-' means no outliers of that kind were identified.

Mol	Type	Chain	Res	Link	Chirals	Torsions	Rings
2	ADP	A	601	3	-	0/12/32/32	0/3/3/3
2	ADP	B	601	3	-	0/12/32/32	0/3/3/3

All (11) bond length outliers are listed below:

Mol	Chain	Res	Type	Atoms	Z	Observed(Å)	Ideal(Å)
2	B	601	ADP	C5-C4	-3.53	1.32	1.40
2	A	601	ADP	C5-C4	-3.18	1.33	1.40
2	B	601	ADP	C8-N9	-2.78	1.33	1.36
2	A	601	ADP	C8-N9	-2.40	1.34	1.36
2	A	601	ADP	C6-C5	-2.10	1.31	1.42
2	A	601	ADP	O4'-C1'	2.22	1.44	1.41
2	B	601	ADP	O4'-C1'	2.28	1.44	1.41
2	B	601	ADP	C2-N1	3.31	1.40	1.33
2	A	601	ADP	C2-N1	3.40	1.40	1.33
2	A	601	ADP	C2-N3	4.85	1.40	1.32
2	B	601	ADP	C2-N3	4.94	1.40	1.32

All (11) bond angle outliers are listed below:

Mol	Chain	Res	Type	Atoms	Z	Observed(°)	Ideal(°)
2	B	601	ADP	N3-C2-N1	-12.78	117.92	128.86
2	A	601	ADP	N3-C2-N1	-12.63	118.05	128.86
2	B	601	ADP	PA-O3A-PB	-4.29	118.20	132.63
2	A	601	ADP	PA-O3A-PB	-3.72	120.13	132.63
2	B	601	ADP	C4'-O4'-C1'	-3.51	106.17	109.83
2	B	601	ADP	C2'-C3'-C4'	-3.30	96.28	102.62
2	A	601	ADP	C2'-C3'-C4'	-3.06	96.74	102.62
2	A	601	ADP	C4'-O4'-C1'	-2.88	106.82	109.83
2	A	601	ADP	C5'-C4'-C3'	-2.80	104.76	115.29
2	A	601	ADP	C4-C5-N7	-2.60	106.90	109.41
2	B	601	ADP	C5'-C4'-C3'	-2.47	106.00	115.29

There are no chirality outliers.

There are no torsion outliers.

There are no ring outliers.

2 monomers are involved in 3 short contacts:

Mol	Chain	Res	Type	Clashes	Symm-Clashes
2	A	601	ADP	2	0
2	B	601	ADP	1	0

5.7 Other polymers [i](#)

There are no such residues in this entry.

5.8 Polymer linkage issues [i](#)

There are no chain breaks in this entry.

6 Fit of model and data

6.1 Protein, DNA and RNA chains

In the following table, the column labelled ‘#RSRZ > 2’ contains the number (and percentage) of RSRZ outliers, followed by percent RSRZ outliers for the chain as percentile scores relative to all X-ray entries and entries of similar resolution. The OWAB column contains the minimum, median, 95th percentile and maximum values of the occupancy-weighted average B-factor per residue. The column labelled ‘Q < 0.9’ lists the number of (and percentage) of residues with an average occupancy less than 0.9.

Mol	Chain	Analysed	<RSRZ>	#RSRZ>2	OWAB(Å ²)	Q<0.9
1	A	334/369 (90%)	0.15	28 (8%) 11 15	11, 33, 104, 134	0
1	B	329/369 (89%)	0.04	17 (5%) 27 34	8, 29, 85, 134	0
All	All	663/738 (89%)	0.10	45 (6%) 17 23	8, 32, 101, 134	0

All (45) RSRZ outliers are listed below:

Mol	Chain	Res	Type	RSRZ
1	B	58	ALA	14.2
1	B	61	SER	11.7
1	A	365	VAL	7.9
1	A	190	ASN	7.7
1	B	59	ASP	7.2
1	B	125	TYR	7.1
1	A	179	SER	6.7
1	A	125	TYR	6.6
1	A	283	ARG	6.1
1	B	127	TRP	6.1
1	B	126	THR	6.0
1	A	188	PRO	4.9
1	B	365	VAL	4.6
1	A	189	ARG	4.4
1	A	284	GLU	4.3
1	A	326	GLY	4.1
1	B	56	GLY	4.1
1	A	178	VAL	4.0
1	A	176	SER	3.8
1	A	286	GLY	3.7
1	A	281	ARG	3.7
1	A	307	PRO	3.6
1	B	327	ARG	3.6
1	A	288	ILE	3.6

Continued on next page...

Continued from previous page...

Mol	Chain	Res	Type	RSRZ
1	A	187	ASP	3.1
1	A	308	HIS	3.1
1	A	285	ALA	3.1
1	B	289	ASN	3.1
1	B	57	LEU	3.1
1	A	177	ASP	3.0
1	A	282	ALA	2.7
1	A	364	GLU	2.6
1	A	181	ARG	2.6
1	A	287	ASN	2.6
1	B	128	GLU	2.5
1	A	126	THR	2.4
1	A	127	TRP	2.3
1	B	364	GLU	2.3
1	A	253	GLU	2.3
1	B	273	GLY	2.2
1	A	250	ILE	2.2
1	B	30	LEU	2.2
1	B	363	PRO	2.2
1	A	227	LEU	2.1
1	B	326	GLY	2.1

6.2 Non-standard residues in protein, DNA, RNA chains ⓘ

There are no non-standard protein/DNA/RNA residues in this entry.

6.3 Carbohydrates ⓘ

There are no carbohydrates in this entry.

6.4 Ligands ⓘ

In the following table, the Atoms column lists the number of modelled atoms in the group and the number defined in the chemical component dictionary. The B-factors column lists the minimum, median, 95th percentile and maximum values of B factors of atoms in the group. The column labelled 'Q< 0.9' lists the number of atoms with occupancy less than 0.9.

Mol	Type	Chain	Res	Atoms	RSCC	RSR	B-factors(\AA^2)	Q<0.9
2	ADP	B	601	27/27	0.93	0.18	20,26,31,37	0
2	ADP	A	601	27/27	0.97	0.11	14,20,25,31	0

Continued on next page...

Continued from previous page...

Mol	Type	Chain	Res	Atoms	RSCC	RSR	B-factors(\AA^2)	Q<0.9
3	MG	B	602	1/1	0.98	0.16	18,18,18,18	0
3	MG	A	602	1/1	0.98	0.13	18,18,18,18	0

6.5 Other polymers [i](#)

There are no such residues in this entry.