



# Full wwPDB X-ray Structure Validation Report ⓘ

Sep 7, 2019 – 02:03 PM EDT

PDB ID : 6O7D  
Title : Crystal structure of Csm1-Csm4 cassette in complex with one ATP  
Authors : Jia, N.; Patel, D.J.  
Deposited on : 2019-03-07  
Resolution : 2.81 Å(reported)

This is a Full wwPDB X-ray Structure Validation Report for a publicly released PDB entry.

We welcome your comments at [validation@mail.wwpdb.org](mailto:validation@mail.wwpdb.org)

A user guide is available at

<https://www.wwpdb.org/validation/2017/XrayValidationReportHelp>

with specific help available everywhere you see the ⓘ symbol.

---

The following versions of software and data (see [references ⓘ](#)) were used in the production of this report:

MolProbity : 4.02b-467  
Mogul : 1.8.0 (224370), CSD as540be (2019)  
Xtriage (Phenix) : 1.13  
EDS : 2.4  
buster-report : 1.1.7 (2018)  
Percentile statistics : 20171227.v01 (using entries in the PDB archive December 27th 2017)  
Refmac : 5.8.0158  
CCP4 : 7.0 (Gargrove)  
Ideal geometry (proteins) : Engh & Huber (2001)  
Ideal geometry (DNA, RNA) : Parkinson et al. (1996)  
Validation Pipeline (wwPDB-VP) : 2.4

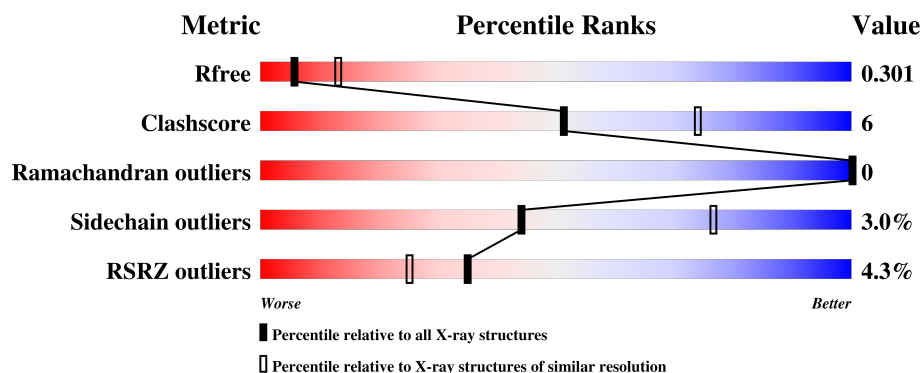
# 1 Overall quality at a glance

The following experimental techniques were used to determine the structure:

*X-RAY DIFFRACTION*


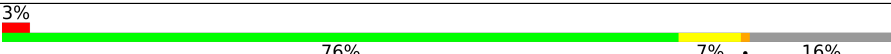
The reported resolution of this entry is 2.81 Å.

Percentile scores (ranging between 0-100) for global validation metrics of the entry are shown in the following graphic. The table shows the number of entries on which the scores are based.



Metric	Whole archive (#Entries)	Similar resolution (#Entries, resolution range(Å))
$R_{free}$	111664	3177 (2.84-2.80)
Clashscore	122126	3606 (2.84-2.80)
Ramachandran outliers	120053	3547 (2.84-2.80)
Sidechain outliers	120020	3549 (2.84-2.80)
RSRZ outliers	108989	3108 (2.84-2.80)

The table below summarises the geometric issues observed across the polymeric chains and their fit to the electron density. The red, orange, yellow and green segments on the lower bar indicate the fraction of residues that contain outliers for  $\geq 3$ , 2, 1 and 0 types of geometric quality criteria. A grey segment represents the fraction of residues that are not modelled. The numeric value for each fraction is indicated below the corresponding segment, with a dot representing fractions  $\leq 5\%$ . The upper red bar (where present) indicates the fraction of residues that have poor fit to the electron density. The numeric value is given above the bar.

Mol	Chain	Length	Quality of chain
1	A	791	 4% 76% 13% • 10%
2	B	289	 3% 76% 7% • 16%

## 2 Entry composition

There are 4 unique types of molecules in this entry. The entry contains 7660 atoms, of which 0 are hydrogens and 0 are deuteriums.

In the tables below, the ZeroOcc column contains the number of atoms modelled with zero occupancy, the AltConf column contains the number of residues with at least one atom in alternate conformation and the Trace column contains the number of residues modelled with at most 2 atoms.

- Molecule 1 is a protein called CRISPR system single-strand-specific deoxyribonuclease Cas10/Csm1 (subtype III-A).

Mol	Chain	Residues	Atoms					ZeroOcc	AltConf	Trace
1	A	708	Total	C	N	O	S	0	0	0
			5690	3660	978	1036	16			

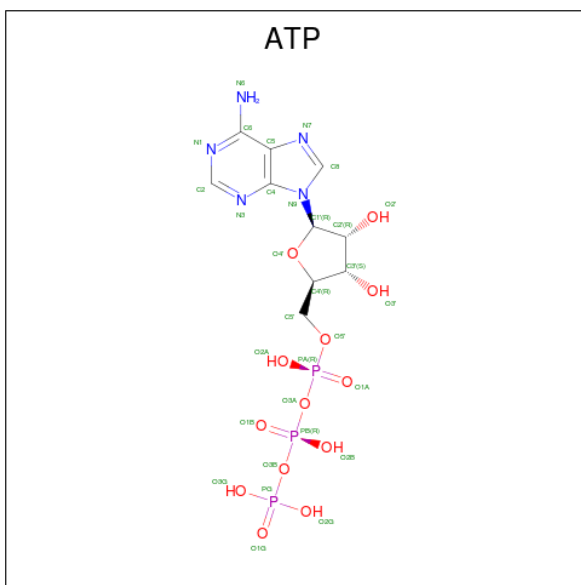
There are 14 discrepancies between the modelled and reference sequences:

Chain	Residue	Modelled	Actual	Comment	Reference
A	-13	MET	-	initiating methionine	UNP B6YWB8
A	-12	GLY	-	expression tag	UNP B6YWB8
A	-11	SER	-	expression tag	UNP B6YWB8
A	-10	SER	-	expression tag	UNP B6YWB8
A	-9	HIS	-	expression tag	UNP B6YWB8
A	-8	HIS	-	expression tag	UNP B6YWB8
A	-7	HIS	-	expression tag	UNP B6YWB8
A	-6	HIS	-	expression tag	UNP B6YWB8
A	-5	HIS	-	expression tag	UNP B6YWB8
A	-4	HIS	-	expression tag	UNP B6YWB8
A	-3	SER	-	expression tag	UNP B6YWB8
A	-2	GLN	-	expression tag	UNP B6YWB8
A	-1	ASP	-	expression tag	UNP B6YWB8
A	0	PRO	-	expression tag	UNP B6YWB8

- Molecule 2 is a protein called Csm4.

Mol	Chain	Residues	Atoms					ZeroOcc	AltConf	Trace
2	B	242	Total	C	N	O	S	0	0	0
			1937	1262	320	351	4			

- Molecule 3 is ADENOSINE-5'-TRIPHOSPHATE (three-letter code: ATP) (formula: C<sub>10</sub>H<sub>16</sub>N<sub>5</sub>O<sub>13</sub>P<sub>3</sub>).



Mol	Chain	Residues	Atoms					ZeroOcc	AltConf
3	A	1	Total	C	N	O	P	0	0
			31	10	5	13	3		

- Molecule 4 is MANGANESE (II) ION (three-letter code: MN) (formula: Mn).

Mol	Chain	Residues	Atoms	ZeroOcc	AltConf
4	A	2	Total Mn 2 2	0	0



## 4 Data and refinement statistics

Property	Value	Source
Space group	P 65 2 2	Depositor
Cell constants a, b, c, $\alpha$ , $\beta$ , $\gamma$	156.78Å 156.78Å 185.77Å 90.00° 90.00° 120.00°	Depositor
Resolution (Å)	50.00 – 2.81 49.46 – 2.81	Depositor EDS
% Data completeness (in resolution range)	99.7 (50.00-2.81) 99.7 (49.46-2.81)	Depositor EDS
$R_{merge}$	(Not available)	Depositor
$R_{sym}$	(Not available)	Depositor
$\langle I/\sigma(I) \rangle$ <sup>1</sup>	1.56 (at 2.81Å)	Xtriage
Refinement program	REFMAC 5.8.0238	Depositor
R, $R_{free}$	0.250 , 0.299 0.253 , 0.301	Depositor DCC
$R_{free}$ test set	3320 reflections (9.94%)	wwPDB-VP
Wilson B-factor (Å <sup>2</sup> )	96.6	Xtriage
Anisotropy	0.069	Xtriage
Bulk solvent $k_{sol}$ (e/Å <sup>3</sup> ), $B_{sol}$ (Å <sup>2</sup> )	0.30 , 61.5	EDS
L-test for twinning <sup>2</sup>	$\langle  L  \rangle = 0.50$ , $\langle L^2 \rangle = 0.33$	Xtriage
Estimated twinning fraction	No twinning to report.	Xtriage
$F_o, F_c$ correlation	0.94	EDS
Total number of atoms	7660	wwPDB-VP
Average B, all atoms (Å <sup>2</sup> )	108.0	wwPDB-VP

Xtriage's analysis on translational NCS is as follows: *The largest off-origin peak in the Patterson function is 5.08% of the height of the origin peak. No significant pseudotranslation is detected.*

<sup>1</sup>Intensities estimated from amplitudes.

<sup>2</sup>Theoretical values of  $\langle |L| \rangle$ ,  $\langle L^2 \rangle$  for acentric reflections are 0.5, 0.333 respectively for untwinned datasets, and 0.375, 0.2 for perfectly twinned datasets.

## 5 Model quality

### 5.1 Standard geometry

Bond lengths and bond angles in the following residue types are not validated in this section: MN, ATP

The Z score for a bond length (or angle) is the number of standard deviations the observed value is removed from the expected value. A bond length (or angle) with  $|Z| > 5$  is considered an outlier worth inspection. RMSZ is the root-mean-square of all Z scores of the bond lengths (or angles).

Mol	Chain	Bond lengths		Bond angles	
		RMSZ	# Z  >5	RMSZ	# Z  >5
1	A	0.65	0/5813	0.73	0/7839
2	B	0.64	0/1985	0.73	0/2682
All	All	0.65	0/7798	0.73	0/10521

There are no bond length outliers.

There are no bond angle outliers.

There are no chirality outliers.

There are no planarity outliers.

### 5.2 Too-close contacts

In the following table, the Non-H and H(model) columns list the number of non-hydrogen atoms and hydrogen atoms in the chain respectively. The H(added) column lists the number of hydrogen atoms added and optimized by MolProbity. The Clashes column lists the number of clashes within the asymmetric unit, whereas Symm-Clashes lists symmetry related clashes.

Mol	Chain	Non-H	H(model)	H(added)	Clashes	Symm-Clashes
1	A	5690	0	5693	82	0
2	B	1937	0	1935	14	0
3	A	31	0	12	1	0
4	A	2	0	0	0	0
All	All	7660	0	7640	93	0

The all-atom clashscore is defined as the number of clashes found per 1000 atoms (including hydrogen atoms). The all-atom clashscore for this structure is 6.

All (93) close contacts within the same asymmetric unit are listed below, sorted by their clash magnitude.

Atom-1	Atom-2	Interatomic distance (Å)	Clash overlap (Å)
1:A:695:LEU:HD21	1:A:775:VAL:CG2	1.41	1.48
1:A:695:LEU:CD2	1:A:775:VAL:HG21	1.58	1.31
1:A:695:LEU:CD2	1:A:775:VAL:CG2	2.20	1.06
1:A:627:PHE:CD2	1:A:636:MET:HG2	2.13	0.83
1:A:695:LEU:CD2	1:A:775:VAL:HG22	2.08	0.81
1:A:31:SER:HB3	1:A:57:SER:O	1.80	0.80
2:B:224:PRO:HG3	2:B:247:ILE:HD11	1.67	0.75
1:A:171:ARG:NH2	1:A:478:GLU:O	2.21	0.73
1:A:139:GLU:OE2	1:A:139:GLU:HA	1.87	0.72
1:A:26:TYR:H	1:A:33:GLN:NE2	1.88	0.70
1:A:31:SER:CB	1:A:57:SER:O	2.40	0.70
1:A:660:ARG:HD2	1:A:765:ASP:OD2	1.95	0.66
1:A:695:LEU:HD23	1:A:775:VAL:HG22	1.78	0.65
1:A:695:LEU:N	1:A:695:LEU:HD23	2.12	0.64
2:B:57:ALA:HB1	2:B:157:VAL:HG13	1.81	0.63
1:A:695:LEU:HD21	1:A:775:VAL:HG21	0.66	0.61
1:A:491:PHE:HB2	1:A:499:VAL:HG23	1.82	0.61
1:A:688:ILE:HA	1:A:699:LEU:CD1	2.31	0.61
1:A:259:LEU:HD12	1:A:633:ILE:CD1	2.30	0.60
2:B:224:PRO:HG2	2:B:227:TRP:CE3	2.38	0.59
1:A:713:ARG:HG3	1:A:761:VAL:HG12	1.85	0.59
1:A:92:ASN:ND2	1:A:218:THR:HB	2.18	0.58
1:A:293:GLY:HA2	1:A:584:TYR:OH	2.04	0.57
1:A:635:ARG:HG3	2:B:145:PHE:CZ	2.39	0.57
2:B:74:GLU:HB2	2:B:75:PRO:HD3	1.88	0.56
1:A:26:TYR:HB2	1:A:33:GLN:HG3	1.86	0.56
1:A:176:LEU:HB2	1:A:177:PRO:HD3	1.87	0.56
1:A:635:ARG:HG3	2:B:145:PHE:HZ	1.71	0.56
1:A:416:CYS:HB3	1:A:419:LEU:HD13	1.87	0.56
1:A:522:VAL:HG21	1:A:545:MET:HE1	1.89	0.55
1:A:262:ARG:HD2	1:A:419:LEU:HD23	1.88	0.55
1:A:614:THR:HG21	1:A:618:LEU:HB2	1.88	0.55
1:A:745:LEU:HD11	1:A:764:VAL:HG21	1.89	0.54
1:A:17:GLY:HA3	1:A:30:HIS:O	2.10	0.52
1:A:31:SER:CA	1:A:57:SER:O	2.58	0.52
1:A:688:ILE:HA	1:A:699:LEU:HD12	1.91	0.52
1:A:565:ILE:O	1:A:608:ARG:HD2	2.09	0.52
1:A:525:LEU:HD22	1:A:588:ASP:CB	2.40	0.51
1:A:304:PRO:HA	1:A:307:VAL:HG22	1.93	0.51
1:A:488:ALA:HB3	1:A:585:ALA:HB3	1.92	0.51
1:A:522:VAL:HG21	1:A:545:MET:CE	2.40	0.51
1:A:659:GLY:O	1:A:769:LYS:NZ	2.38	0.51

Continued on next page...



*Continued from previous page...*

Atom-1	Atom-2	Interatomic distance (Å)	Clash overlap (Å)
2:B:61:SER:HB2	2:B:123:PRO:CG	2.41	0.50
1:A:140:LEU:HD12	1:A:141:PRO:HD2	1.93	0.50
1:A:259:LEU:HD12	1:A:633:ILE:HD13	1.92	0.50
1:A:426:LEU:N	1:A:427:PRO:CD	2.75	0.50
1:A:697:GLY:HA2	1:A:700:GLU:HG2	1.93	0.50
2:B:220:PRO:HB3	2:B:247:ILE:HD12	1.94	0.50
1:A:124:ASN:HB2	1:A:615:GLY:HA3	1.94	0.49
1:A:525:LEU:N	3:A:801:ATP:O2B	2.45	0.49
2:B:213:VAL:O	2:B:279:PRO:HA	2.13	0.49
1:A:688:ILE:HA	1:A:699:LEU:HD11	1.93	0.49
1:A:249:ARG:HA	1:A:634:TYR:HB3	1.95	0.48
1:A:259:LEU:HD12	1:A:633:ILE:HD12	1.96	0.48
1:A:272:ASP:OD1	1:A:434:ARG:NH1	2.46	0.48
1:A:20:VAL:HG23	1:A:33:GLN:HG2	1.95	0.48
1:A:31:SER:HA	1:A:57:SER:O	2.13	0.48
1:A:179:LEU:HD22	1:A:202:MET:HE1	1.96	0.48
1:A:131:TRP:CD1	1:A:153:ASP:HB3	2.50	0.47
1:A:220:GLU:HB3	1:A:226:ARG:HB3	1.95	0.47
1:A:250:VAL:HB	1:A:633:ILE:HD11	1.96	0.47
1:A:18:LYS:HB2	1:A:19:PRO:HD3	1.97	0.47
1:A:26:TYR:HB2	1:A:33:GLN:CG	2.45	0.46
1:A:26:TYR:HB2	1:A:33:GLN:CD	2.36	0.46
1:A:607:ARG:HG3	1:A:674:TRP:CD2	2.51	0.45
1:A:220:GLU:HG3	1:A:227:CYS:SG	2.56	0.45
1:A:520:GLY:HA3	1:A:590:PHE:CZ	2.51	0.45
1:A:221:ASP:OD2	1:A:221:ASP:N	2.50	0.44
1:A:183:LEU:HD12	1:A:202:MET:HE1	2.00	0.44
1:A:430:LEU:HD11	1:A:456:GLN:HA	2.00	0.44
1:A:575:PRO:HG2	1:A:578:PRO:HA	2.00	0.43
1:A:138:LYS:HB3	1:A:138:LYS:NZ	2.33	0.43
2:B:130:PRO:HA	2:B:145:PHE:HB2	2.00	0.43
1:A:378:PHE:CG	2:B:220:PRO:HG2	2.53	0.43
1:A:121:SER:HA	1:A:129:TYR:CE2	2.54	0.43
1:A:180:GLU:OE1	1:A:547:TYR:OH	2.34	0.43
1:A:29:ASP:OD1	1:A:31:SER:N	2.52	0.42
1:A:646:THR:O	1:A:650:GLU:HG3	2.19	0.42
1:A:327:SER:HA	1:A:371:PHE:CE2	2.54	0.42
1:A:134:LEU:C	1:A:134:LEU:HD23	2.39	0.42
1:A:140:LEU:HB2	1:A:561:PHE:CZ	2.55	0.42
1:A:429:LEU:HD11	1:A:432:PHE:CZ	2.54	0.42
1:A:200:ASP:HA	1:A:203:ARG:HD3	2.00	0.42

*Continued on next page...*

*Continued from previous page...*

Atom-1	Atom-2	Interatomic distance (Å)	Clash overlap (Å)
1:A:124:ASN:CB	1:A:615:GLY:HA3	2.50	0.42
2:B:173:ALA:HB3	2:B:174:PRO:HD3	2.01	0.42
2:B:173:ALA:HB3	2:B:174:PRO:CD	2.49	0.41
1:A:259:LEU:CD1	1:A:633:ILE:HD12	2.50	0.41
2:B:57:ALA:HA	2:B:158:TYR:O	2.20	0.41
1:A:607:ARG:HG3	1:A:674:TRP:CE2	2.55	0.41
1:A:92:ASN:CG	1:A:218:THR:HB	2.40	0.41
1:A:699:LEU:HD23	1:A:699:LEU:HA	1.94	0.41
1:A:702:LYS:C	1:A:704:GLY:H	2.23	0.41
1:A:246:PHE:O	1:A:262:ARG:NH1	2.55	0.40

There are no symmetry-related clashes.

## 5.3 Torsion angles [i](#)

### 5.3.1 Protein backbone [i](#)

In the following table, the Percentiles column shows the percent Ramachandran outliers of the chain as a percentile score with respect to all X-ray entries followed by that with respect to entries of similar resolution.

The Analysed column shows the number of residues for which the backbone conformation was analysed, and the total number of residues.

Mol	Chain	Analysed	Favoured	Allowed	Outliers	Percentiles	
1	A	692/791 (88%)	647 (94%)	45 (6%)	0	100	100
2	B	230/289 (80%)	217 (94%)	13 (6%)	0	100	100
All	All	922/1080 (85%)	864 (94%)	58 (6%)	0	100	100

There are no Ramachandran outliers to report.

### 5.3.2 Protein sidechains [i](#)

In the following table, the Percentiles column shows the percent sidechain outliers of the chain as a percentile score with respect to all X-ray entries followed by that with respect to entries of similar resolution.

The Analysed column shows the number of residues for which the sidechain conformation was analysed, and the total number of residues.

Mol	Chain	Analysed	Rotameric	Outliers	Percentiles	
1	A	598/665 (90%)	582 (97%)	16 (3%)	48	79
2	B	204/240 (85%)	196 (96%)	8 (4%)	35	68
All	All	802/905 (89%)	778 (97%)	24 (3%)	44	76

All (24) residues with a non-rotameric sidechain are listed below:

Mol	Chain	Res	Type
1	A	113	PRO
1	A	138	LYS
1	A	170	LEU
1	A	184	THR
1	A	203	ARG
1	A	226	ARG
1	A	227	CYS
1	A	249	ARG
1	A	260	ARG
1	A	425	ASN
1	A	429	LEU
1	A	501	THR
1	A	588	ASP
1	A	654	ARG
1	A	695	LEU
1	A	744	GLU
2	B	20	ARG
2	B	33	SER
2	B	100	LYS
2	B	103	ASP
2	B	157	VAL
2	B	199	PHE
2	B	213	VAL
2	B	222	LYS

Some sidechains can be flipped to improve hydrogen bonding and reduce clashes. All (4) such sidechains are listed below:

Mol	Chain	Res	Type
1	A	33	GLN
1	A	287	ASN
1	A	668	HIS
1	A	675	ASN

### 5.3.3 RNA ⓘ

There are no RNA molecules in this entry.

## 5.4 Non-standard residues in protein, DNA, RNA chains ⓘ

There are no non-standard protein/DNA/RNA residues in this entry.

## 5.5 Carbohydrates ⓘ

There are no carbohydrates in this entry.

## 5.6 Ligand geometry ⓘ

Of 3 ligands modelled in this entry, 2 are monoatomic - leaving 1 for Mogul analysis.

In the following table, the Counts columns list the number of bonds (or angles) for which Mogul statistics could be retrieved, the number of bonds (or angles) that are observed in the model and the number of bonds (or angles) that are defined in the Chemical Component Dictionary. The Link column lists molecule types, if any, to which the group is linked. The Z score for a bond length (or angle) is the number of standard deviations the observed value is removed from the expected value. A bond length (or angle) with  $|Z| > 2$  is considered an outlier worth inspection. RMSZ is the root-mean-square of all Z scores of the bond lengths (or angles).

Mol	Type	Chain	Res	Link	Bond lengths			Bond angles		
					Counts	RMSZ	$\# Z  > 2$	Counts	RMSZ	$\# Z  > 2$
3	ATP	A	801	4	26,33,33	0.68	0	27,52,52	0.75	1 (3%)

In the following table, the Chirals column lists the number of chiral outliers, the number of chiral centers analysed, the number of these observed in the model and the number defined in the Chemical Component Dictionary. Similar counts are reported in the Torsion and Rings columns. '-' means no outliers of that kind were identified.

Mol	Type	Chain	Res	Link	Chirals	Torsions	Rings
3	ATP	A	801	4	-	7/18/38/38	0/3/3/3

There are no bond length outliers.

All (1) bond angle outliers are listed below:

Mol	Chain	Res	Type	Atoms	Z	Observed(°)	Ideal(°)
3	A	801	ATP	C5-C6-N6	2.16	123.78	120.38

There are no chirality outliers.

All (7) torsion outliers are listed below:

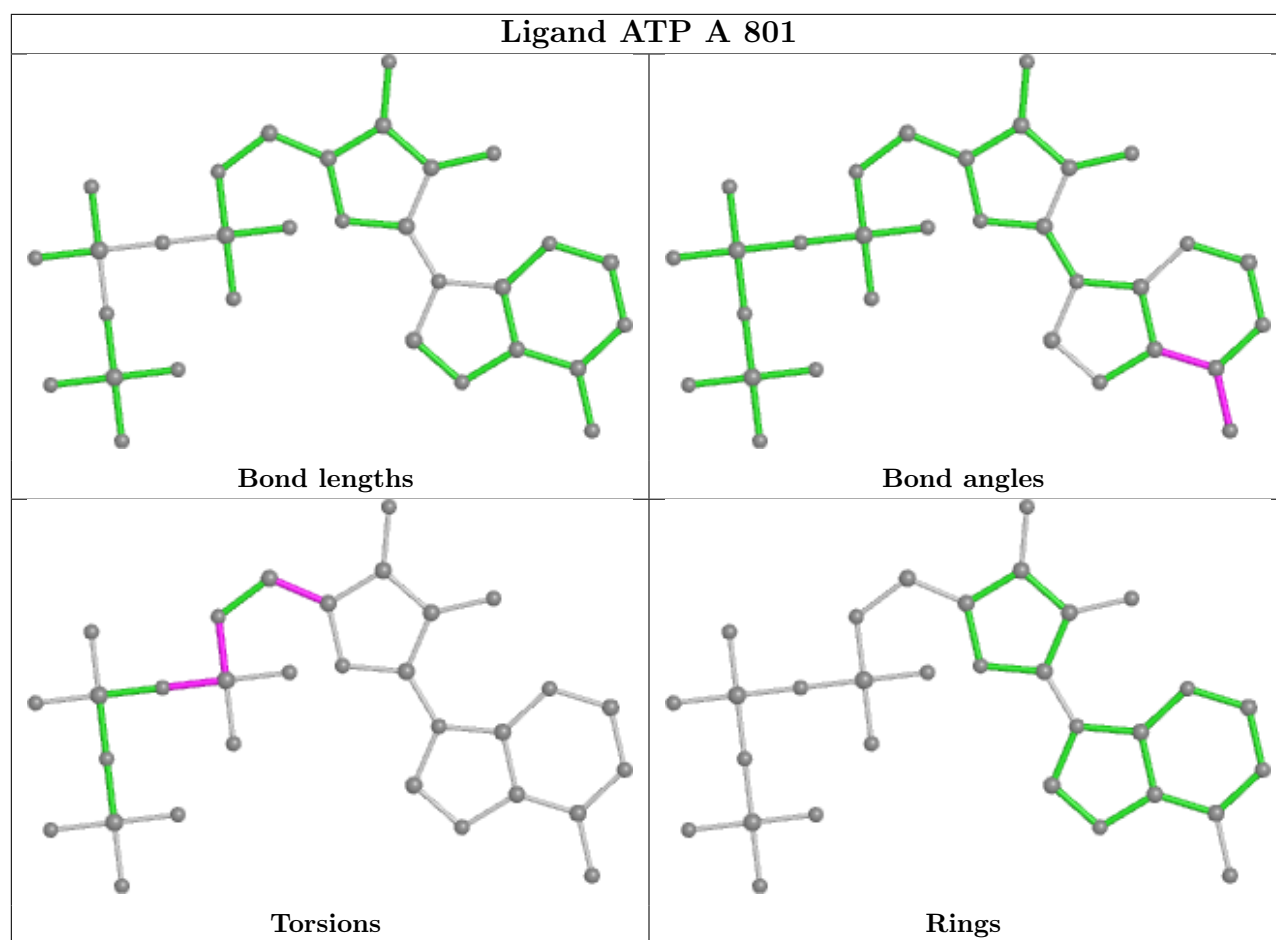
Mol	Chain	Res	Type	Atoms
3	A	801	ATP	C5'-O5'-PA-O2A
3	A	801	ATP	C5'-O5'-PA-O3A
3	A	801	ATP	O4'-C4'-C5'-O5'
3	A	801	ATP	C3'-C4'-C5'-O5'
3	A	801	ATP	C5'-O5'-PA-O1A
3	A	801	ATP	PB-O3A-PA-O1A
3	A	801	ATP	PB-O3A-PA-O2A

There are no ring outliers.

1 monomer is involved in 1 short contact:

Mol	Chain	Res	Type	Clashes	Symm-Clashes
3	A	801	ATP	1	0

The following is a two-dimensional graphical depiction of Mogul quality analysis of bond lengths, bond angles, torsion angles, and ring geometry for all instances of the Ligand of Interest. In addition, ligands with molecular weight > 250 and outliers as shown on the validation Tables will also be included. For torsion angles, if less than 5% of the Mogul distribution of torsion angles is within 10 degrees of the torsion angle in question, then that torsion angle is considered an outlier. Any bond that is central to one or more torsion angles identified as an outlier by Mogul will be highlighted in the graph. For rings, the root-mean-square deviation (RMSD) between the ring in question and similar rings identified by Mogul is calculated over all ring torsion angles. If the average RMSD is greater than 60 degrees and the minimal RMSD between the ring in question and any Mogul-identified rings is also greater than 60 degrees, then that ring is considered an outlier. The outliers are highlighted in purple. The color gray indicates Mogul did not find sufficient equivalents in the CSD to analyse the geometry.



## 5.7 Other polymers [i](#)

There are no such residues in this entry.

## 5.8 Polymer linkage issues [i](#)

There are no chain breaks in this entry.

## 6 Fit of model and data

### 6.1 Protein, DNA and RNA chains

In the following table, the column labelled ‘#RSRZ > 2’ contains the number (and percentage) of RSRZ outliers, followed by percent RSRZ outliers for the chain as percentile scores relative to all X-ray entries and entries of similar resolution. The OWAB column contains the minimum, median, 95<sup>th</sup> percentile and maximum values of the occupancy-weighted average B-factor per residue. The column labelled ‘Q < 0.9’ lists the number of (and percentage) of residues with an average occupancy less than 0.9.

Mol	Chain	Analysed	<RSRZ>	#RSRZ>2	OWAB(Å <sup>2</sup> )	Q<0.9
1	A	708/791 (89%)	0.39	32 (4%) 33 23	72, 106, 149, 182	0
2	B	242/289 (83%)	0.24	9 (3%) 41 31	71, 97, 143, 164	0
All	All	950/1080 (87%)	0.35	41 (4%) 35 25	71, 104, 148, 182	0

All (41) RSRZ outliers are listed below:

Mol	Chain	Res	Type	RSRZ
2	B	90	TYR	4.8
1	A	727	TYR	4.3
1	A	753	VAL	4.1
1	A	746	VAL	4.0
1	A	341	ARG	3.8
1	A	752	ALA	3.6
1	A	756	LYS	3.3
2	B	150	ARG	3.3
2	B	96	LEU	3.1
2	B	89	ARG	3.1
1	A	51	GLU	3.0
1	A	81	GLU	3.0
1	A	229	LYS	2.9
1	A	323	ARG	2.9
1	A	502	PHE	2.8
1	A	11	GLY	2.8
1	A	248	TYR	2.8
1	A	250	VAL	2.7
2	B	146	TRP	2.7
1	A	634	TYR	2.6
1	A	757	GLU	2.6
1	A	71	MET	2.6
1	A	226	ARG	2.5
2	B	86	GLU	2.5

*Continued on next page...*

*Continued from previous page...*

Mol	Chain	Res	Type	RSRZ
1	A	438	ASN	2.4
1	A	740	ASP	2.4
1	A	425	ASN	2.4
1	A	680	LEU	2.4
1	A	78	LEU	2.4
1	A	633	ILE	2.3
2	B	87	GLU	2.2
1	A	228	ARG	2.2
1	A	69	GLU	2.2
1	A	258	TYR	2.2
2	B	145	PHE	2.2
1	A	725	TRP	2.1
1	A	70	LEU	2.1
2	B	63	ASP	2.1
1	A	12	LEU	2.0
1	A	728	LEU	2.0
1	A	679	GLU	2.0

## 6.2 Non-standard residues in protein, DNA, RNA chains ⓘ

There are no non-standard protein/DNA/RNA residues in this entry.

## 6.3 Carbohydrates ⓘ

There are no carbohydrates in this entry.

## 6.4 Ligands ⓘ

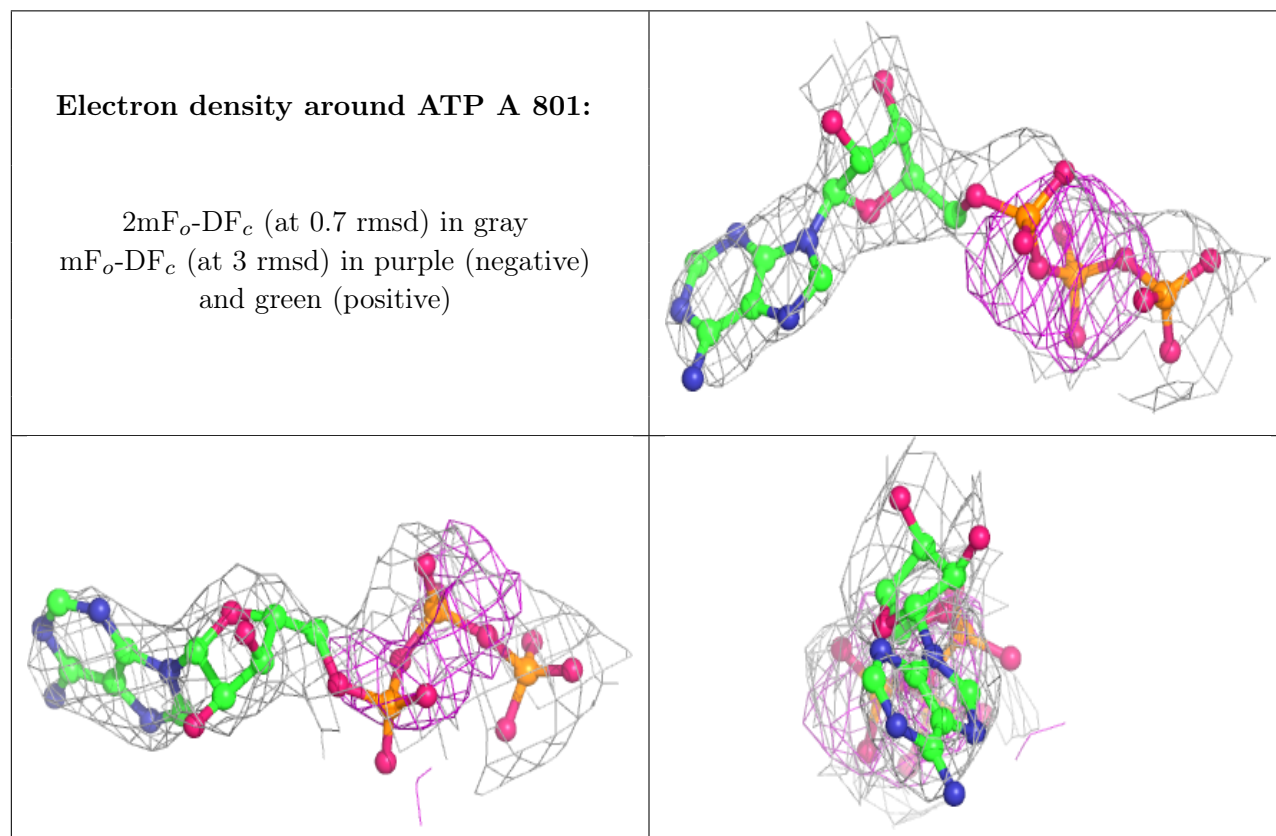
In the following table, the Atoms column lists the number of modelled atoms in the group and the number defined in the chemical component dictionary. The B-factors column lists the minimum, median, 95<sup>th</sup> percentile and maximum values of B factors of atoms in the group. The column labelled 'Q< 0.9' lists the number of atoms with occupancy less than 0.9.

Mol	Type	Chain	Res	Atoms	RSCC	RSR	B-factors( $\text{\AA}^2$ )	Q<0.9
3	ATP	A	801	31/31	0.93	0.16	108,126,131,131	0
4	MN	A	803	1/1	0.96	0.11	104,104,104,104	0
4	MN	A	802	1/1	0.99	0.23	110,110,110,110	0

The following is a graphical depiction of the model fit to experimental electron density of all instances of the Ligand of Interest. In addition, ligands with molecular weight > 250 and outliers



as shown on the geometry validation Tables will also be included. Each fit is shown from different orientation to approximate a three-dimensional view.



## 6.5 Other polymers ⓘ

There are no such residues in this entry.