



wwPDB X-ray Structure Validation Summary Report ⓘ

Mar 8, 2018 – 07:31 pm GMT

PDB ID : 5O7A
Title : Quinolin-6-yloxyacetamides are microtubule destabilizing agents that bind to the colchicine site of tubulin
Authors : Sharma, A.; Olieric, N.; Steinmetz, M.O.
Deposited on : 2017-06-08
Resolution : 2.50 Å(reported)

This is a wwPDB X-ray Structure Validation Summary Report for a publicly released PDB entry.

We welcome your comments at validation@mail.wwpdb.org

A user guide is available at

<https://www.wwpdb.org/validation/2017/XrayValidationReportHelp>

with specific help available everywhere you see the ⓘ symbol.

The following versions of software and data (see [references ⓘ](#)) were used in the production of this report:

MolProbity : 4.02b-467
Mogul : 1.7.3 (157068), CSD as539be (2018)
Xtriage (Phenix) : 1.13
EDS : trunk30967
Percentile statistics : 20171227.v01 (using entries in the PDB archive December 27th 2017)
Refmac : 5.8.0158
CCP4 : 7.0 (Gargrove)
Ideal geometry (proteins) : Engh & Huber (2001)
Ideal geometry (DNA, RNA) : Parkinson et al. (1996)
Validation Pipeline (wwPDB-VP) : trunk30967

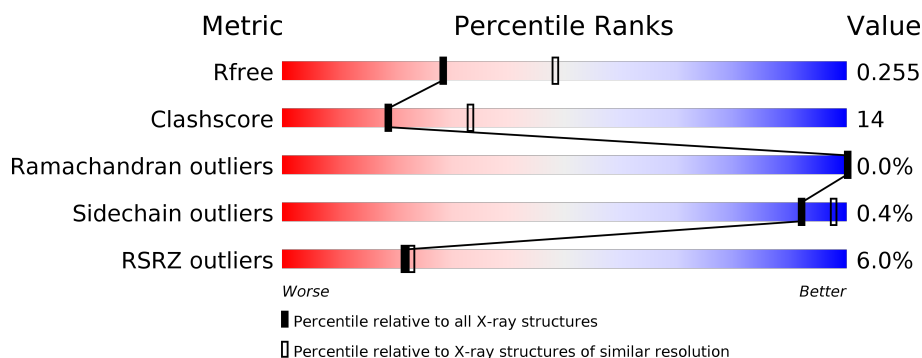
1 Overall quality at a glance

The following experimental techniques were used to determine the structure:

X-RAY DIFFRACTION

The reported resolution of this entry is 2.50 Å.

Percentile scores (ranging between 0-100) for global validation metrics of the entry are shown in the following graphic. The table shows the number of entries on which the scores are based.



Metric	Whole archive (#Entries)	Similar resolution (#Entries, resolution range(Å))
R_{free}	111664	4155 (2.50-2.50)
Clashscore	122126	4827 (2.50-2.50)
Ramachandran outliers	120053	4735 (2.50-2.50)
Sidechain outliers	120020	4737 (2.50-2.50)
RSRZ outliers	108989	4058 (2.50-2.50)

The table below summarises the geometric issues observed across the polymeric chains and their fit to the electron density. The red, orange, yellow and green segments on the lower bar indicate the fraction of residues that contain outliers for ≥ 3 , 2, 1 and 0 types of geometric quality criteria. A grey segment represents the fraction of residues that are not modelled. The numeric value for each fraction is indicated below the corresponding segment, with a dot representing fractions $\leq 5\%$. The upper red bar (where present) indicates the fraction of residues that have poor fit to the electron density. The numeric value is given above the bar.

Mol	Chain	Length	Quality of chain
1	A	451	<div> <div>2%</div> <div> <div></div> <div>72%</div> <div>25%</div> <div>•</div> </div> </div>
1	C	451	<div> <div>%</div> <div> <div></div> <div>77%</div> <div>20%</div> <div>•</div> </div> </div>
2	B	445	<div> <div>4%</div> <div> <div></div> <div>67%</div> <div>28%</div> <div>5%</div> </div> </div>
2	D	445	<div> <div>6%</div> <div> <div></div> <div>67%</div> <div>28%</div> <div>6%</div> </div> </div>
3	E	143	<div> <div>7%</div> <div> <div></div> <div>63%</div> <div>20%</div> <div>17%</div> </div> </div>
4	F	384	<div> <div>14%</div> <div> <div></div> <div>46%</div> <div>20%</div> <div>34%</div> </div> </div>

2 Entry composition

There are 10 unique types of molecules in this entry. The entry contains 17086 atoms, of which 104 are hydrogens and 0 are deuteriums.

In the tables below, the ZeroOcc column contains the number of atoms modelled with zero occupancy, the AltConf column contains the number of residues with at least one atom in alternate conformation and the Trace column contains the number of residues modelled with at most 2 atoms.

- Molecule 1 is a protein called Tubulin alpha-1B chain.

Mol	Chain	Residues	Atoms					ZeroOcc	AltConf	Trace
1	A	437	Total	C	N	O	S	0	10	0
			3460	2198	582	655	25			
1	C	440	Total	C	N	O	S	0	5	0
			3461	2191	585	663	22			

- Molecule 2 is a protein called Tubulin beta-2B chain.

Mol	Chain	Residues	Atoms					ZeroOcc	AltConf	Trace
2	B	421	Total	C	N	O	S	0	6	0
			3346	2107	568	644	27			
2	D	419	Total	C	N	O	S	0	1	0
			3298	2075	560	636	27			

- Molecule 3 is a protein called Stathmin-4.

Mol	Chain	Residues	Atoms					ZeroOcc	AltConf	Trace
3	E	118	Total	C	N	O	S	0	1	0
			985	609	179	192	5			

There are 2 discrepancies between the modelled and reference sequences:

Chain	Residue	Modelled	Actual	Comment	Reference
E	3	MET	-	initiating methionine	UNP P63043
E	4	ALA	-	expression tag	UNP P63043

- Molecule 4 is a protein called Uncharacterized protein.

Mol	Chain	Residues	Atoms					ZeroOcc	AltConf	Trace
4	F	254	Total	C	N	O	S	0	1	0
			2093	1364	349	367	13			

There are 6 discrepancies between the modelled and reference sequences:

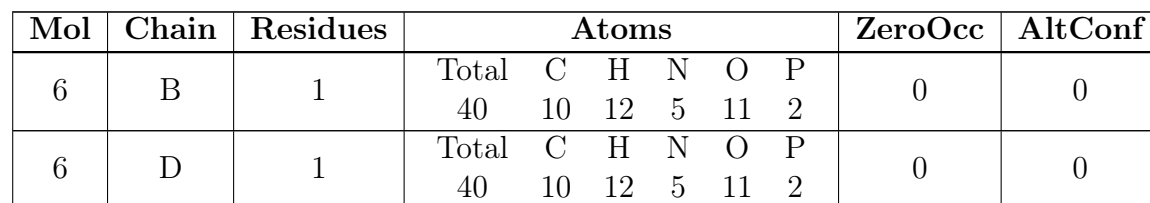
Chain	Residue	Modelled	Actual	Comment	Reference
F	379	HIS	-	expression tag	UNP E1BQ43
F	380	HIS	-	expression tag	UNP E1BQ43
F	381	HIS	-	expression tag	UNP E1BQ43
F	382	HIS	-	expression tag	UNP E1BQ43
F	383	HIS	-	expression tag	UNP E1BQ43
F	384	HIS	-	expression tag	UNP E1BQ43

- Molecule 5 is GUANOSINE-5'-TRIPHOSPHATE (three-letter code: GTP) (formula: $C_{10}H_{16}N_5O_{14}P_3$).



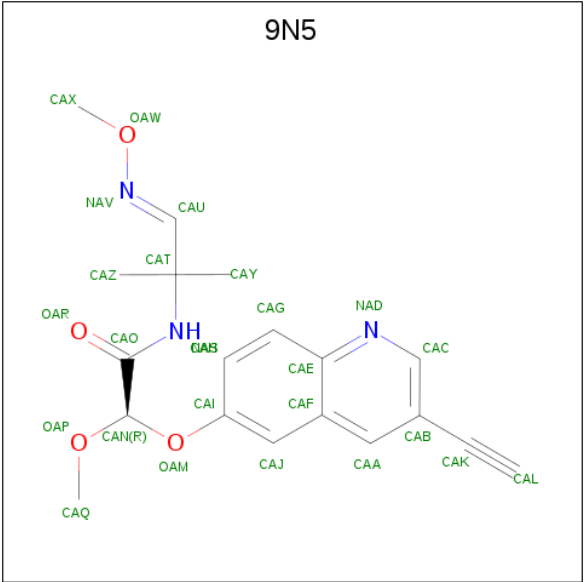
Mol	Chain	Residues	Atoms						ZeroOcc	AltConf
5	A	1	Total	C	H	N	O	P	0	0
			44	10	12	5	14	3		
5	C	1	Total	C	H	N	O	P	0	0
			44	10	12	5	14	3		

- Molecule 6 is GUANOSINE-5'-DIPHOSPHATE (three-letter code: GDP) (formula: $C_{10}H_{15}N_5O_{11}P_2$).



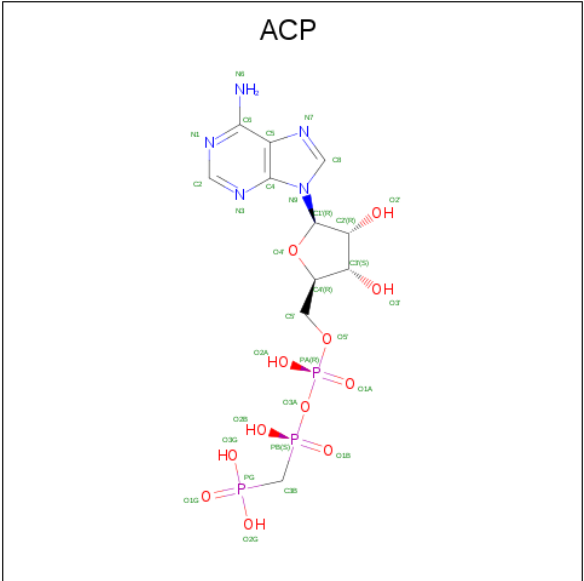
- | Mol | Chain | Residues | Atoms | ZeroOcc | AltConf |
|-----|-------|----------|-----------------|---------|---------|
| 7 | B | 2 | Total Mg
2 2 | 0 | 0 |
| 7 | D | 2 | Total Mg
2 2 | 0 | 0 |

- 



Mol	Chain	Residues	Atoms					ZeroOcc	AltConf
8	B	1	Total	C	H	N	O	0	0
			47	19	21	3	4		
8	D	1	Total	C	H	N	O	0	0
			47	19	21	3	4		

- Molecule 9 is PHOSPHOMETHYLPHOSPHONIC ACID ADENYLATE ESTER (three-letter code: ACP) (formula: C₁₁H₁₈N₅O₁₂P₃).



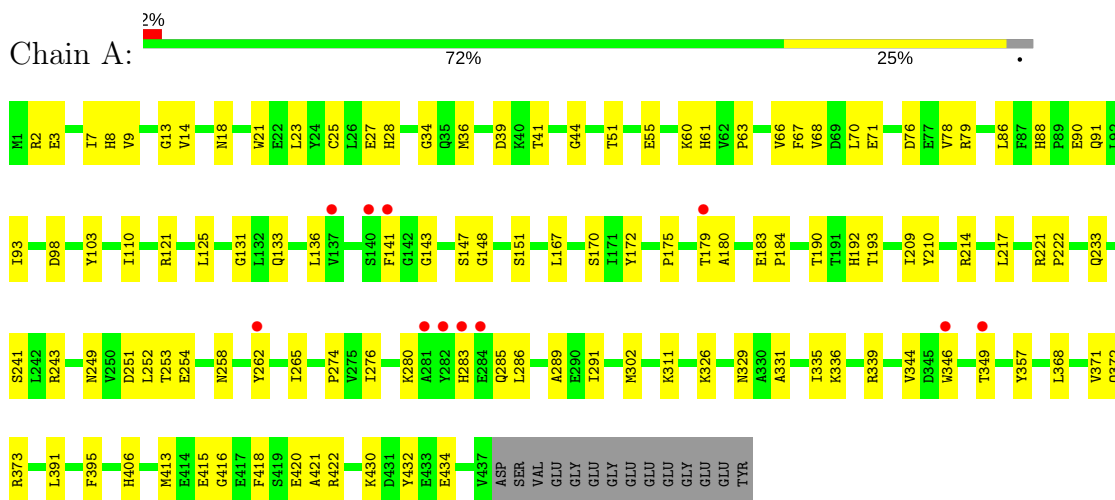
- Molecule 10 is water.

Mol	Chain	Residues	Atoms		ZeroOcc	AltConf
10	A	30	Total 30	O 30	0	0
10	B	25	Total 25	O 25	0	0
10	C	43	Total 43	O 43	0	0
10	D	18	Total 18	O 18	0	0
10	E	6	Total 6	O 6	0	0
10	F	10	Total 10	O 10	0	0

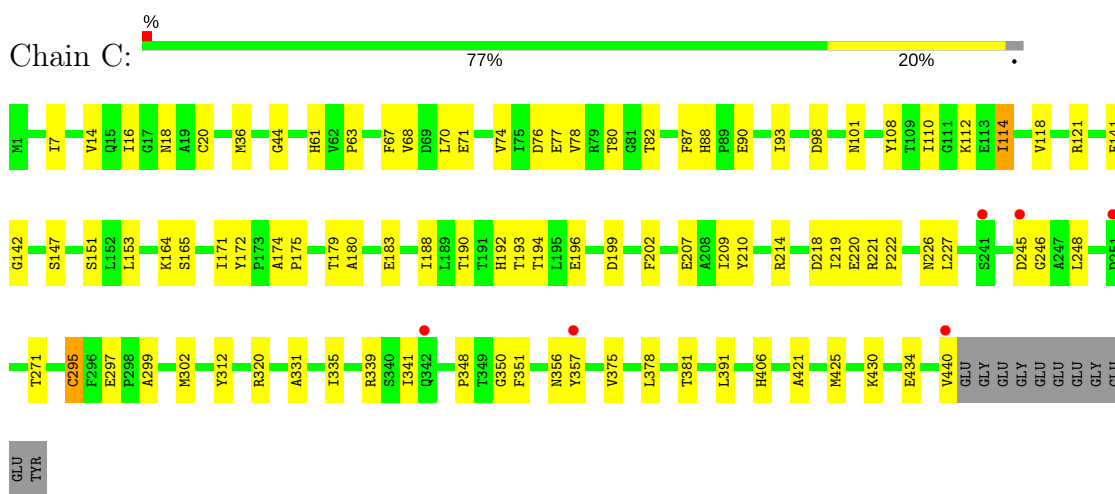
3 Residue-property plots

These plots are drawn for all protein, RNA and DNA chains in the entry. The first graphic for a chain summarises the proportions of the various outlier classes displayed in the second graphic. The second graphic shows the sequence view annotated by issues in geometry and electron density. Residues are color-coded according to the number of geometric quality criteria for which they contain at least one outlier: green = 0, yellow = 1, orange = 2 and red = 3 or more. A red dot above a residue indicates a poor fit to the electron density ($RSRZ > 2$). Stretches of 2 or more consecutive residues without any outlier are shown as a green connector. Residues present in the sample, but not in the model, are shown in grey.

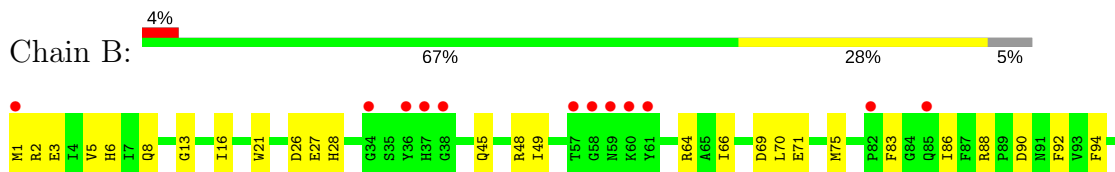
• Molecule 1: Tubulin alpha-1B chain

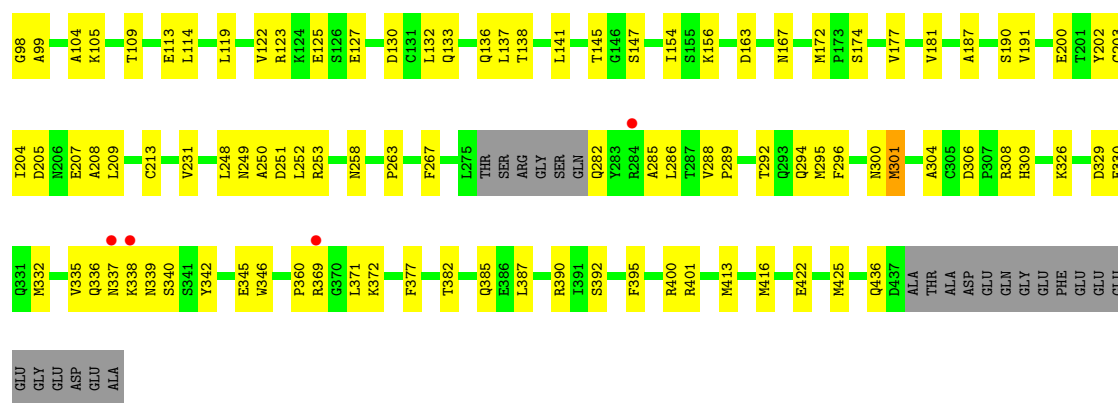


• Molecule 1: Tubulin alpha-1B chain

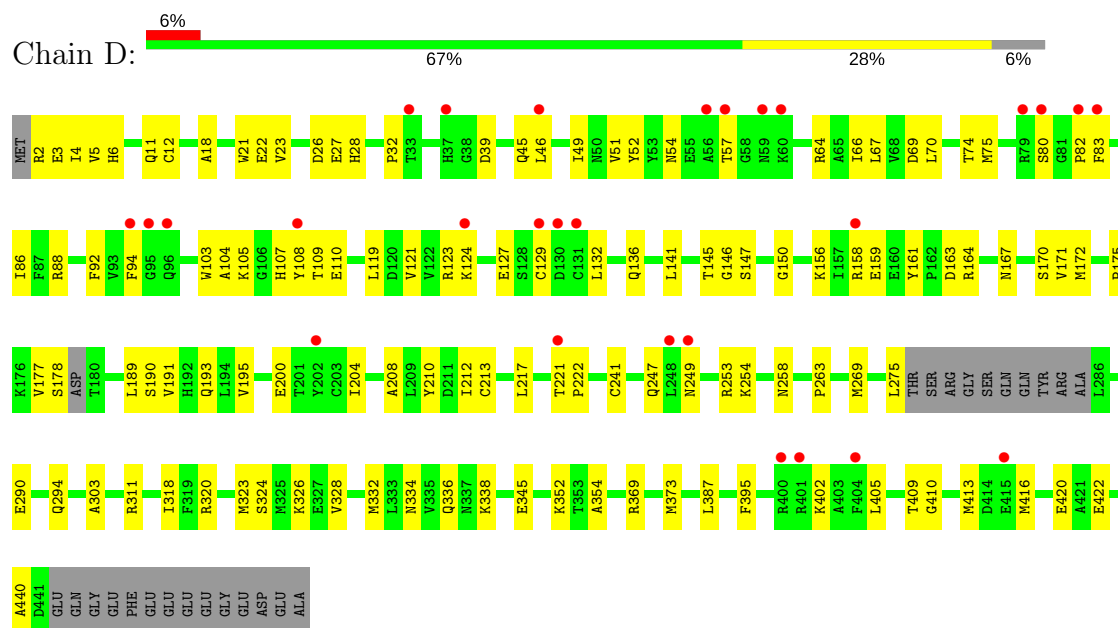


• Molecule 2: Tubulin beta-2B chain

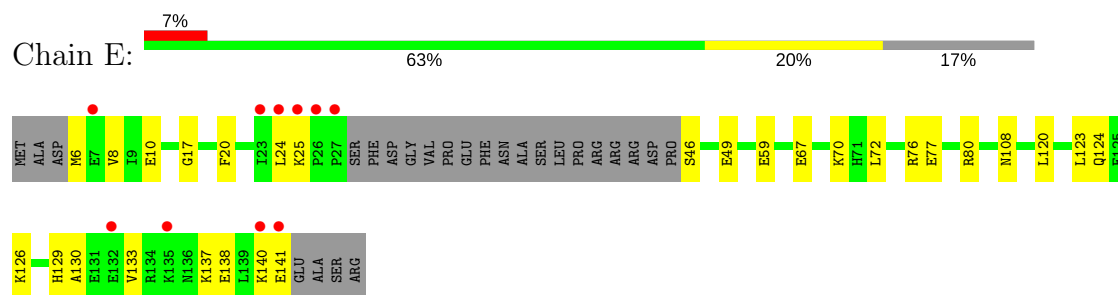




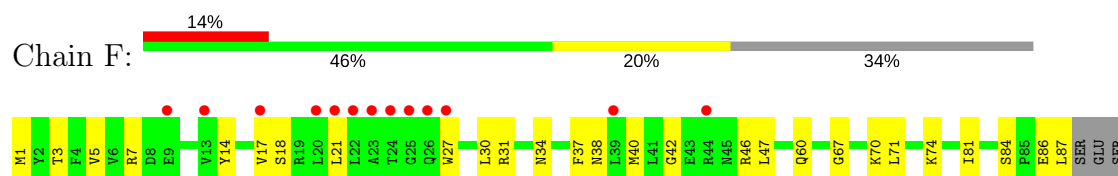
• Molecule 2: Tubulin beta-2B chain



• Molecule 3: Stathmin-4



• Molecule 4: Uncharacterized protein





4 Data and refinement statistics

Property	Value	Source
Space group	P 21 21 21	Depositor
Cell constants a, b, c, α , β , γ	104.91Å 157.47Å 180.68Å 90.00° 90.00° 90.00°	Depositor
Resolution (Å)	47.98 – 2.50 47.98 – 2.49	Depositor EDS
% Data completeness (in resolution range)	99.5 (47.98-2.50) 99.6 (47.98-2.49)	Depositor EDS
R_{merge}	0.21	Depositor
R_{sym}	(Not available)	Depositor
$\langle I/\sigma(I) \rangle$ ¹	1.00 (at 2.48Å)	Xtriage
Refinement program	PHENIX (dev_2420: ???)	Depositor
R, R_{free}	0.204 , 0.256 0.204 , 0.255	Depositor DCC
R_{free} test set	2000 reflections (1.92%)	wwPDB-VP
Wilson B-factor (Å ²)	58.1	Xtriage
Anisotropy	0.117	Xtriage
Bulk solvent k_{sol} (e/Å ³), B_{sol} (Å ²)	0.33 , 44.6	EDS
L-test for twinning ²	$\langle L \rangle = 0.49$, $\langle L^2 \rangle = 0.32$	Xtriage
Estimated twinning fraction	No twinning to report.	Xtriage
F_o, F_c correlation	0.95	EDS
Total number of atoms	17086	wwPDB-VP
Average B, all atoms (Å ²)	72.0	wwPDB-VP

Xtriage's analysis on translational NCS is as follows: *The largest off-origin peak in the Patterson function is 2.52% of the height of the origin peak. No significant pseudotranslation is detected.*

¹Intensities estimated from amplitudes.

²Theoretical values of $\langle |L| \rangle$, $\langle L^2 \rangle$ for acentric reflections are 0.5, 0.333 respectively for untwinned datasets, and 0.375, 0.2 for perfectly twinned datasets.

5 Model quality [i](#)

5.1 Standard geometry [i](#)

Bond lengths and bond angles in the following residue types are not validated in this section: GDP, GTP, MG, ACP, 9N5

The Z score for a bond length (or angle) is the number of standard deviations the observed value is removed from the expected value. A bond length (or angle) with $|Z| > 5$ is considered an outlier worth inspection. RMSZ is the root-mean-square of all Z scores of the bond lengths (or angles).

Mol	Chain	Bond lengths		Bond angles	
		RMSZ	$\# Z > 5$	RMSZ	$\# Z > 5$
1	A	0.45	0/3568	0.58	0/4844
1	C	0.57	2/3551 (0.1%)	0.65	0/4822
2	B	0.54	1/3438 (0.0%)	0.65	0/4656
2	D	0.42	0/3373	0.58	0/4568
3	E	0.57	0/995	0.56	0/1318
4	F	0.41	0/2141	0.53	0/2889
All	All	0.49	3/17066 (0.0%)	0.60	0/23097

All (3) bond length outliers are listed below:

Mol	Chain	Res	Type	Atoms	Z	Observed(Å)	Ideal(Å)
1	C	20	CYS	CB-SG	-6.20	1.71	1.82
1	C	295	CYS	CB-SG	-5.79	1.72	1.81
2	B	213	CYS	CB-SG	-5.04	1.73	1.81

There are no bond angle outliers.

There are no chirality outliers.

There are no planarity outliers.

5.2 Too-close contacts [i](#)

In the following table, the Non-H and H(model) columns list the number of non-hydrogen atoms and hydrogen atoms in the chain respectively. The H(added) column lists the number of hydrogen atoms added and optimized by MolProbity. The Clashes column lists the number of clashes within the asymmetric unit, whereas Symm-Clashes lists symmetry related clashes.

Mol	Chain	Non-H	H(model)	H(added)	Clashes	Symm-Clashes
1	A	3460	0	3407	99	0
1	C	3461	0	3377	82	0

Continued on next page...

Continued from previous page...

Mol	Chain	Non-H	H(model)	H(added)	Clashes	Symm-Clashes
2	B	3346	0	3243	100	0
2	D	3298	0	3181	120	0
3	E	985	0	1010	36	0
4	F	2093	0	2105	76	0
5	A	32	12	12	1	0
5	C	32	12	12	0	0
6	B	28	12	12	0	0
6	D	28	12	12	3	0
7	B	2	0	0	0	0
7	D	2	0	0	0	0
8	B	26	21	0	1	0
8	D	26	21	0	1	0
9	F	31	14	14	3	0
10	A	30	0	0	0	0
10	B	25	0	0	3	0
10	C	43	0	0	4	0
10	D	18	0	0	3	0
10	E	6	0	0	1	0
10	F	10	0	0	0	0
All	All	16982	104	16385	469	0

The all-atom clashscore is defined as the number of clashes found per 1000 atoms (including hydrogen atoms). The all-atom clashscore for this structure is 14.

The worst 5 of 469 close contacts within the same asymmetric unit are listed below, sorted by their clash magnitude.

Atom-1	Atom-2	Interatomic distance (Å)	Clash overlap (Å)
4:F:67:GLY:O	4:F:70:LYS:HD3	1.39	1.21
1:C:331:ALA:O	1:C:335:ILE:HD13	1.47	1.15
2:D:5:VAL:HG23	2:D:132:LEU:HD11	1.31	1.13
1:C:331:ALA:O	1:C:335:ILE:CD1	2.04	1.04
1:C:172:TYR:CE2	1:C:391:LEU:HD11	1.94	1.02

There are no symmetry-related clashes.

5.3 Torsion angles

5.3.1 Protein backbone

In the following table, the Percentiles column shows the percent Ramachandran outliers of the chain as a percentile score with respect to all X-ray entries followed by that with respect to entries of similar resolution.

The Analysed column shows the number of residues for which the backbone conformation was analysed, and the total number of residues.

Mol	Chain	Analysed	Favoured	Allowed	Outliers	Percentiles	
1	A	445/451 (99%)	423 (95%)	22 (5%)	0	100	100
1	C	443/451 (98%)	432 (98%)	11 (2%)	0	100	100
2	B	423/445 (95%)	404 (96%)	18 (4%)	1 (0%)	49	71
2	D	414/445 (93%)	402 (97%)	12 (3%)	0	100	100
3	E	115/143 (80%)	112 (97%)	3 (3%)	0	100	100
4	F	239/384 (62%)	227 (95%)	12 (5%)	0	100	100
All	All	2079/2319 (90%)	2000 (96%)	78 (4%)	1 (0%)	100	100

All (1) Ramachandran outliers are listed below:

Mol	Chain	Res	Type
2	B	177	VAL

5.3.2 Protein sidechains

In the following table, the Percentiles column shows the percent sidechain outliers of the chain as a percentile score with respect to all X-ray entries followed by that with respect to entries of similar resolution.

The Analysed column shows the number of residues for which the sidechain conformation was analysed, and the total number of residues.

Mol	Chain	Analysed	Rotameric	Outliers	Percentiles	
1	A	378/379 (100%)	378 (100%)	0	100	100
1	C	376/379 (99%)	373 (99%)	3 (1%)	83	94
2	B	371/383 (97%)	370 (100%)	1 (0%)	93	98
2	D	363/383 (95%)	362 (100%)	1 (0%)	93	98
3	E	107/127 (84%)	106 (99%)	1 (1%)	81	93
4	F	231/342 (68%)	230 (100%)	1 (0%)	92	98

Continued on next page...

Continued from previous page...

Mol	Chain	Analysed	Rotameric	Outliers	Percentiles
All	All	1826/1993 (92%)	1819 (100%)	7 (0%)	92 98

5 of 7 residues with a non-rotameric sidechain are listed below:

Mol	Chain	Res	Type
1	C	218	ASP
4	F	211	TYR
2	D	57	THR
1	C	82	THR
3	E	59	GLU

Some sidechains can be flipped to improve hydrogen bonding and reduce clashes. 5 of 17 such sidechains are listed below:

Mol	Chain	Res	Type
2	D	91	ASN
2	D	107	HIS
4	F	246	GLN
2	D	50	ASN
4	F	260	ASN

5.3.3 RNA [i](#)

There are no RNA molecules in this entry.

5.4 Non-standard residues in protein, DNA, RNA chains [i](#)

There are no non-standard protein/DNA/RNA residues in this entry.

5.5 Carbohydrates [i](#)

There are no carbohydrates in this entry.

5.6 Ligand geometry [i](#)

Of 11 ligands modelled in this entry, 4 are monoatomic - leaving 7 for Mogul analysis.

In the following table, the Counts columns list the number of bonds (or angles) for which Mogul statistics could be retrieved, the number of bonds (or angles) that are observed in the model and the number of bonds (or angles) that are defined in the Chemical Component Dictionary. The

Link column lists molecule types, if any, to which the group is linked. The Z score for a bond length (or angle) is the number of standard deviations the observed value is removed from the expected value. A bond length (or angle) with $|Z| > 2$ is considered an outlier worth inspection. RMSZ is the root-mean-square of all Z scores of the bond lengths (or angles).

Mol	Type	Chain	Res	Link	Bond lengths			Bond angles		
					Counts	RMSZ	# Z > 2	Counts	RMSZ	# Z > 2
5	GTP	A	501	7	27,34,34	3.14	12 (44%)	26,54,54	2.30	4 (15%)
6	GDP	B	501	7	25,30,30	3.05	11 (44%)	24,47,47	2.05	3 (12%)
8	9N5	B	504	-	24,27,27	2.80	7 (29%)	29,37,37	2.17	7 (24%)
5	GTP	C	501	7	27,34,34	3.20	10 (37%)	26,54,54	2.06	6 (23%)
6	GDP	D	501	7	25,30,30	2.96	10 (40%)	24,47,47	2.33	4 (16%)
8	9N5	D	504	-	24,27,27	2.83	8 (33%)	29,37,37	1.94	6 (20%)
9	ACP	F	401	-	27,33,33	1.65	5 (18%)	30,52,52	1.85	6 (20%)

In the following table, the Chirals column lists the number of chiral outliers, the number of chiral centers analysed, the number of these observed in the model and the number defined in the Chemical Component Dictionary. Similar counts are reported in the Torsion and Rings columns. '-' means no outliers of that kind were identified.

Mol	Type	Chain	Res	Link	Chirals	Torsions	Rings
5	GTP	A	501	7	-	0/18/38/38	0/3/3/3
6	GDP	B	501	7	-	0/12/32/32	0/3/3/3
8	9N5	B	504	-	-	0/17/22/22	0/2/2/2
5	GTP	C	501	7	-	0/18/38/38	0/3/3/3
6	GDP	D	501	7	-	0/12/32/32	0/3/3/3
8	9N5	D	504	-	-	0/17/22/22	0/2/2/2
9	ACP	F	401	-	-	0/15/38/38	0/3/3/3

The worst 5 of 63 bond length outliers are listed below:

Mol	Chain	Res	Type	Atoms	Z	Observed(Å)	Ideal(Å)
5	A	501	GTP	C8-N9	-8.45	1.26	1.36
8	B	504	9N5	OAW-NAV	-8.27	1.29	1.40
8	D	504	9N5	OAW-NAV	-8.12	1.29	1.40
6	B	501	GDP	C8-N9	-7.96	1.27	1.36
5	C	501	GTP	C8-N9	-7.83	1.27	1.36

The worst 5 of 36 bond angle outliers are listed below:

Mol	Chain	Res	Type	Atoms	Z	Observed(°)	Ideal(°)
8	B	504	9N5	CAB-CAC-NAD	-7.73	120.14	124.36
5	A	501	GTP	C4-C5-N7	-7.44	102.22	109.41

Continued on next page...

Continued from previous page...

Mol	Chain	Res	Type	Atoms	Z	Observed(°)	Ideal(°)
6	D	501	GDP	C4-C5-N7	-6.79	102.85	109.41
9	F	401	ACP	N3-C2-N1	-6.52	123.28	128.86
5	C	501	GTP	C4-C5-N7	-6.41	103.22	109.41

There are no chirality outliers.

There are no torsion outliers.

There are no ring outliers.

5 monomers are involved in 9 short contacts:

Mol	Chain	Res	Type	Clashes	Symm-Clashes
5	A	501	GTP	1	0
8	B	504	9N5	1	0
6	D	501	GDP	3	0
8	D	504	9N5	1	0
9	F	401	ACP	3	0

5.7 Other polymers [i](#)

There are no such residues in this entry.

5.8 Polymer linkage issues [i](#)

There are no chain breaks in this entry.

6 Fit of model and data [i](#)

6.1 Protein, DNA and RNA chains [i](#)

In the following table, the column labelled ‘#RSRZ> 2’ contains the number (and percentage) of RSRZ outliers, followed by percent RSRZ outliers for the chain as percentile scores relative to all X-ray entries and entries of similar resolution. The OWAB column contains the minimum, median, 95th percentile and maximum values of the occupancy-weighted average B-factor per residue. The column labelled ‘Q< 0.9’ lists the number of (and percentage) of residues with an average occupancy less than 0.9.

Mol	Chain	Analysed	<RSRZ>	#RSRZ>2	OWAB(Å ²)	Q<0.9
1	A	437/451 (96%)	0.25	11 (2%) 57 60	44, 67, 100, 141	0
1	C	440/451 (97%)	0.00	6 (1%) 75 77	39, 54, 86, 125	0
2	B	421/445 (94%)	0.24	16 (3%) 40 43	38, 61, 96, 143	1 (0%)
2	D	419/445 (94%)	0.43	28 (6%) 18 18	47, 78, 114, 136	4 (0%)
3	E	118/143 (82%)	0.44	10 (8%) 11 11	50, 80, 120, 139	0
4	F	254/384 (66%)	1.02	54 (21%) 1 0	54, 87, 128, 171	0
All	All	2089/2319 (90%)	0.34	125 (5%) 22 23	38, 68, 111, 171	5 (0%)

The worst 5 of 125 RSRZ outliers are listed below:

Mol	Chain	Res	Type	RSRZ
4	F	21	LEU	6.8
4	F	244	CYS	6.6
4	F	240	LEU	6.5
4	F	259	GLY	5.6
2	D	57	THR	5.6

6.2 Non-standard residues in protein, DNA, RNA chains [i](#)

There are no non-standard protein/DNA/RNA residues in this entry.

6.3 Carbohydrates [i](#)

There are no carbohydrates in this entry.

6.4 Ligands [i](#)

In the following table, the Atoms column lists the number of modelled atoms in the group and the number defined in the chemical component dictionary. The B-factors column lists the minimum, median, 95th percentile and maximum values of B factors of atoms in the group. The column labelled 'Q< 0.9' lists the number of atoms with occupancy less than 0.9.

Mol	Type	Chain	Res	Atoms	RSCC	RSR	B-factors(Å ²)	Q<0.9
9	ACP	F	401	31/31	0.87	0.19	85,115,148,161	0
7	MG	B	503	1/1	0.91	0.44	49,49,49,49	0
7	MG	B	502	1/1	0.94	0.28	56,56,56,56	0
7	MG	D	502	1/1	0.95	0.19	56,56,56,56	0
7	MG	D	503	1/1	0.95	0.13	31,31,31,31	0
8	9N5	D	504	26/26	0.97	0.18	59,71,85,86	0
6	GDP	D	501	28/28	0.97	0.12	64,76,99,105	0
8	9N5	B	504	26/26	0.97	0.17	54,65,73,79	0
6	GDP	B	501	28/28	0.98	0.20	40,50,64,66	0
5	GTP	C	501	32/32	0.98	0.16	36,46,58,64	0
5	GTP	A	501	32/32	0.99	0.21	43,53,62,74	0

6.5 Other polymers [i](#)

There are no such residues in this entry.