



wwPDB EM Validation Summary Report ⓘ

Dec 18, 2022 – 07:02 pm GMT

PDB ID : 7AUE
EMDB ID : EMD-11927
Title : Melanocortin receptor 4 (MC4R) Gs protein complex
Authors : Degtjarik, O.; Israeli, H.; Prabahar, V.; Shalev-Benami, M.
Deposited on : 2020-11-02
Resolution : 2.97 Å(reported)

This is a wwPDB EM Validation Summary Report for a publicly released PDB entry.

We welcome your comments at validation@mail.wwpdb.org

A user guide is available at

<https://www.wwpdb.org/validation/2017/EMValidationReportHelp>

with specific help available everywhere you see the ⓘ symbol.

The types of validation reports are described at

<http://www.wwpdb.org/validation/2017/FAQs#types>.

The following versions of software and data (see [references ⓘ](#)) were used in the production of this report:

EMDB validation analysis : 0.0.1.dev43
Mogul : 1.8.4, CSD as541be (2020)
MolProbity : 4.02b-467
Percentile statistics : 20191225.v01 (using entries in the PDB archive December 25th 2019)
MapQ : 1.9.9
Ideal geometry (proteins) : Engh & Huber (2001)
Ideal geometry (DNA, RNA) : Parkinson et al. (1996)
Validation Pipeline (wwPDB-VP) : 2.31.3

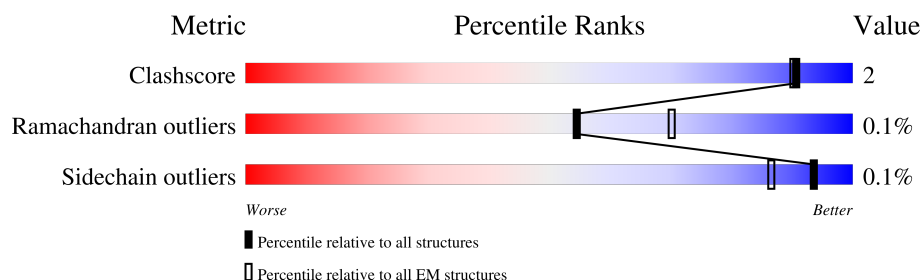
1 Overall quality at a glance

The following experimental techniques were used to determine the structure:

ELECTRON MICROSCOPY

The reported resolution of this entry is 2.97 Å.

Percentile scores (ranging between 0-100) for global validation metrics of the entry are shown in the following graphic. The table shows the number of entries on which the scores are based.



Metric	Whole archive (#Entries)	EM structures (#Entries)
Clashscore	158937	4297
Ramachandran outliers	154571	4023
Sidechain outliers	154315	3826

The table below summarises the geometric issues observed across the polymeric chains and their fit to the map. The red, orange, yellow and green segments of the bar indicate the fraction of residues that contain outliers for ≥ 3 , 2, 1 and 0 types of geometric quality criteria respectively. A grey segment represents the fraction of residues that are not modelled. The numeric value for each fraction is indicated below the corresponding segment, with a dot representing fractions $\leq 5\%$. The upper red bar (where present) indicates the fraction of residues that have poor fit to the EM map (all-atom inclusion $< 40\%$). The numeric value is given above the bar.

Mol	Chain	Length	Quality of chain
1	R	350	<div> <div>9%</div> <div>71%</div> <div>25%</div> </div>
2	A	373	<div> <div>16%</div> <div>60%</div> <div>38%</div> </div>
3	B	357	<div> <div>10%</div> <div>90%</div> <div>5%</div> <div>5%</div> </div>
4	G	71	<div> <div>41%</div> <div>76%</div> <div>20%</div> </div>
5	S	256	<div> <div>18%</div> <div>88%</div> <div>9%</div> </div>
6	C	10	<div> <div>50%</div> <div>40%</div> <div>40%</div> <div>20%</div> </div>

2 Entry composition

There are 8 unique types of molecules in this entry. The entry contains 8755 atoms, of which 0 are hydrogens and 0 are deuteriums.

In the tables below, the AltConf column contains the number of residues with at least one atom in alternate conformation and the Trace column contains the number of residues modelled with at most 2 atoms.

- Molecule 1 is a protein called Melanocortin receptor 4.

Mol	Chain	Residues	Atoms					AltConf	Trace
1	R	263	Total	C	N	O	S	0	0
			2050	1367	317	343	23		

There are 18 discrepancies between the modelled and reference sequences:

Chain	Residue	Modelled	Actual	Comment	Reference
R	333	LEU	-	expression tag	UNP P32245
R	334	GLU	-	expression tag	UNP P32245
R	335	VAL	-	expression tag	UNP P32245
R	336	LEU	-	expression tag	UNP P32245
R	337	PHE	-	expression tag	UNP P32245
R	338	GLN	-	expression tag	UNP P32245
R	339	GLY	-	expression tag	UNP P32245
R	340	PRO	-	expression tag	UNP P32245
R	341	SER	-	expression tag	UNP P32245
R	342	GLY	-	expression tag	UNP P32245
R	343	SER	-	expression tag	UNP P32245
R	344	GLY	-	expression tag	UNP P32245
R	345	HIS	-	expression tag	UNP P32245
R	346	HIS	-	expression tag	UNP P32245
R	347	HIS	-	expression tag	UNP P32245
R	348	HIS	-	expression tag	UNP P32245
R	349	HIS	-	expression tag	UNP P32245
R	350	HIS	-	expression tag	UNP P32245

- Molecule 2 is a protein called Guanine nucleotide-binding protein G(i) subunit alpha-1,Isoform Gnas-2 of Guanine nucleotide-binding protein G(s) subunit alpha isoforms short.

Mol	Chain	Residues	Atoms					AltConf	Trace
2	A	233	Total	C	N	O	S	0	0
			1879	1191	337	341	10		

- Molecule 3 is a protein called Guanine nucleotide-binding protein G(I)/G(S)/G(T) subunit beta-1.

Mol	Chain	Residues	Atoms					AltConf	Trace
3	B	338	Total	C	N	O	S	0	0
			2572	1591	460	500	21		

There are 18 discrepancies between the modelled and reference sequences:

Chain	Residue	Modelled	Actual	Comment	Reference
B	1	HIS	-	expression tag	UNP P62873
B	2	HIS	-	expression tag	UNP P62873
B	3	HIS	-	expression tag	UNP P62873
B	4	HIS	-	expression tag	UNP P62873
B	5	HIS	-	expression tag	UNP P62873
B	6	HIS	-	expression tag	UNP P62873
B	7	LEU	-	expression tag	UNP P62873
B	8	GLU	-	expression tag	UNP P62873
B	9	VAL	-	expression tag	UNP P62873
B	10	LEU	-	expression tag	UNP P62873
B	11	PHE	-	expression tag	UNP P62873
B	12	GLN	-	expression tag	UNP P62873
B	13	GLY	-	expression tag	UNP P62873
B	14	PRO	-	expression tag	UNP P62873
B	15	GLY	-	expression tag	UNP P62873
B	16	SER	-	expression tag	UNP P62873
B	17	SER	-	expression tag	UNP P62873
B	18	GLY	-	expression tag	UNP P62873

- Molecule 4 is a protein called Guanine nucleotide-binding protein G(I)/G(S)/G(O) subunit gamma-2.

Mol	Chain	Residues	Atoms					AltConf	Trace
4	G	57	Total	C	N	O	S	0	0
			427	267	73	84	3		

- Molecule 5 is a protein called scFv16.

Mol	Chain	Residues	Atoms					AltConf	Trace
5	S	232	Total	C	N	O	S	0	0
			1747	1115	294	328	10		

- Molecule 6 is a protein called AMINOSERINE.

Mol	Chain	Residues	Atoms					AltConf	Trace
6	C	10	Total	C	N	O	S	0	1
			78	49	18	9	2		

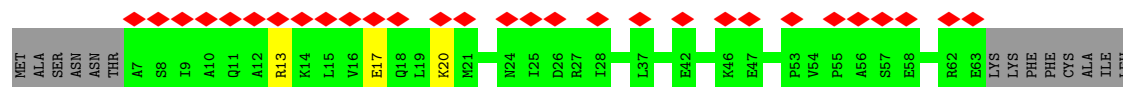
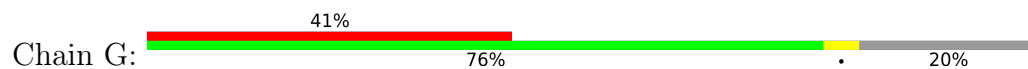
- Molecule 7 is CALCIUM ION (three-letter code: CA) (formula: Ca).

Mol	Chain	Residues	Atoms		AltConf
7	R	1	Total 1	Ca 1	0

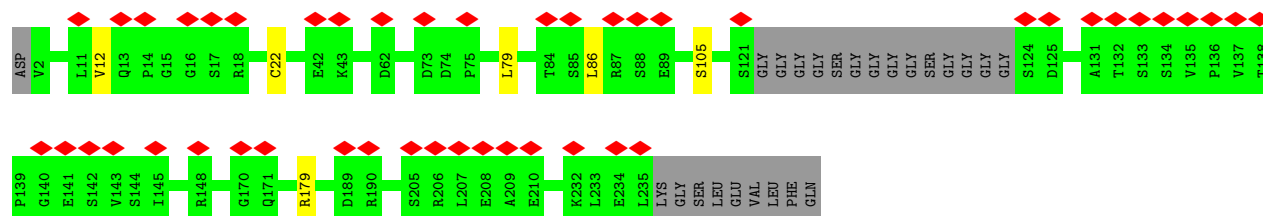
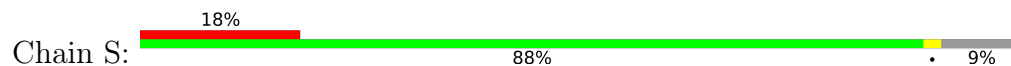
- Molecule 8 is water.

Mol	Chain	Residues	Atoms		AltConf
8	C	1	Total 1	O 1	0

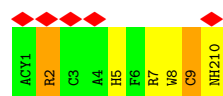
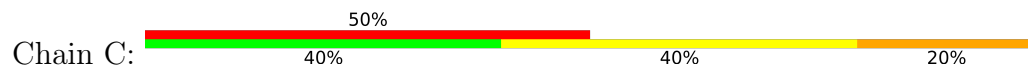
- Molecule 4: Guanine nucleotide-binding protein G(I)/G(S)/G(O) subunit gamma-2



- Molecule 5: scFv16



- Molecule 6: AMINOSERINE



4 Experimental information

Property	Value	Source
EM reconstruction method	SINGLE PARTICLE	Depositor
Imposed symmetry	POINT, Not provided	
Number of particles used	366496	Depositor
Resolution determination method	FSC 0.143 CUT-OFF	Depositor
CTF correction method	PHASE FLIPPING AND AMPLITUDE CORRECTION	Depositor
Microscope	FEI TITAN KRIOS	Depositor
Voltage (kV)	300	Depositor
Electron dose ($e^-/\text{\AA}^2$)	45.5	Depositor
Minimum defocus (nm)	Not provided	
Maximum defocus (nm)	Not provided	
Magnification	Not provided	
Image detector	GATAN K3 BIOQUANTUM (6k x 4k)	Depositor
Maximum map value	0.138	Depositor
Minimum map value	-0.085	Depositor
Average map value	0.000	Depositor
Map value standard deviation	0.005	Depositor
Recommended contour level	0.03	Depositor
Map size (Å)	240.8, 240.8, 240.8	wwPDB
Map dimensions	280, 280, 280	wwPDB
Map angles (°)	90.0, 90.0, 90.0	wwPDB
Pixel spacing (Å)	0.86, 0.86, 0.86	Depositor

5 Model quality [i](#)

5.1 Standard geometry [i](#)

Bond lengths and bond angles in the following residue types are not validated in this section: DPN, CA, DAL, NH2, ACY

The Z score for a bond length (or angle) is the number of standard deviations the observed value is removed from the expected value. A bond length (or angle) with $|Z| > 5$ is considered an outlier worth inspection. RMSZ is the root-mean-square of all Z scores of the bond lengths (or angles).

Mol	Chain	Bond lengths		Bond angles	
		RMSZ	$\# Z > 5$	RMSZ	$\# Z > 5$
1	R	0.26	0/2092	0.48	0/2845
2	A	0.25	0/1913	0.48	0/2576
3	B	0.26	0/2619	0.56	0/3554
4	G	0.24	0/433	0.48	0/586
5	S	0.26	0/1791	0.52	0/2434
6	C	3.26	9/58 (15.5%)	1.10	0/73
All	All	0.37	9/8906 (0.1%)	0.52	0/12068

The worst 5 of 9 bond length outliers are listed below:

Mol	Chain	Res	Type	Atoms	Z	Observed(Å)	Ideal(Å)
6	C	2	ARG	CZ-NH1	9.78	1.45	1.33
6	C	7	ARG	CZ-NH2	9.62	1.45	1.33
6	C	7	ARG	CZ-NH1	9.56	1.45	1.33
6	C	2	ARG	CZ-NH2	9.50	1.45	1.33
6	C	7	ARG	C-N	5.82	1.47	1.34

There are no bond angle outliers.

There are no chirality outliers.

There are no planarity outliers.

5.2 Too-close contacts [i](#)

In the following table, the Non-H and H(model) columns list the number of non-hydrogen atoms and hydrogen atoms in the chain respectively. The H(added) column lists the number of hydrogen atoms added and optimized by MolProbity. The Clashes column lists the number of clashes within the asymmetric unit, whereas Symm-Clashes lists symmetry-related clashes.

Mol	Chain	Non-H	H(model)	H(added)	Clashes	Symm-Clashes
1	R	2050	0	2146	9	0
2	A	1879	0	1852	6	0
3	B	2572	0	2461	10	0
4	G	427	0	420	2	0
5	S	1747	0	1665	3	0
6	C	78	0	66	2	0
7	R	1	0	0	0	0
8	C	1	0	0	0	0
All	All	8755	0	8610	28	0

The all-atom clashscore is defined as the number of clashes found per 1000 atoms (including hydrogen atoms). The all-atom clashscore for this structure is 2.

The worst 5 of 28 close contacts within the same asymmetric unit are listed below, sorted by their clash magnitude.

Atom-1	Atom-2	Interatomic distance (Å)	Clash overlap (Å)
5:S:22:CYS:HB3	5:S:79:LEU:HB3	1.83	0.59
1:R:127:SER:HA	1:R:185:ILE:HG13	1.85	0.59
5:S:105:SER:O	5:S:179:ARG:NH1	2.39	0.55
2:A:35:ARG:NH2	2:A:219:ASP:OD1	2.41	0.54
2:A:246:GLN:O	2:A:250:ASN:ND2	2.41	0.53

There are no symmetry-related clashes.

5.3 Torsion angles [i](#)

5.3.1 Protein backbone [i](#)

In the following table, the Percentiles column shows the percent Ramachandran outliers of the chain as a percentile score with respect to all PDB entries followed by that with respect to all EM entries.

The Analysed column shows the number of residues for which the backbone conformation was analysed, and the total number of residues.

Mol	Chain	Analysed	Favoured	Allowed	Outliers	Percentiles	
1	R	257/350 (73%)	255 (99%)	2 (1%)	0	100	100
2	A	225/373 (60%)	207 (92%)	18 (8%)	0	100	100
3	B	336/357 (94%)	319 (95%)	17 (5%)	0	100	100
4	G	55/71 (78%)	55 (100%)	0	0	100	100

Continued on next page...

Continued from previous page...

Mol	Chain	Analysed	Favoured	Allowed	Outliers	Percentiles	
5	S	228/256 (89%)	219 (96%)	9 (4%)	0	100	100
6	C	6/10 (60%)	4 (67%)	1 (17%)	1 (17%)	0	0
All	All	1107/1417 (78%)	1059 (96%)	47 (4%)	1 (0%)	54	83

All (1) Ramachandran outliers are listed below:

Mol	Chain	Res	Type
6	C	9	CYS

5.3.2 Protein sidechains [i](#)

In the following table, the Percentiles column shows the percent sidechain outliers of the chain as a percentile score with respect to all PDB entries followed by that with respect to all EM entries.

The Analysed column shows the number of residues for which the sidechain conformation was analysed, and the total number of residues.

Mol	Chain	Analysed	Rotameric	Outliers	Percentiles	
1	R	234/310 (76%)	234 (100%)	0	100	100
2	A	199/331 (60%)	199 (100%)	0	100	100
3	B	273/297 (92%)	273 (100%)	0	100	100
4	G	43/58 (74%)	43 (100%)	0	100	100
5	S	184/208 (88%)	184 (100%)	0	100	100
6	C	6/6 (100%)	5 (83%)	1 (17%)	2	10
All	All	939/1210 (78%)	938 (100%)	1 (0%)	93	98

All (1) residues with a non-rotameric sidechain are listed below:

Mol	Chain	Res	Type
6	C	2	ARG

Sometimes sidechains can be flipped to improve hydrogen bonding and reduce clashes. 5 of 6 such sidechains are listed below:

Mol	Chain	Res	Type
2	A	197	ASN
2	A	250	ASN

Continued on next page...

Continued from previous page...

Mol	Chain	Res	Type
6	C	5	HIS
1	R	294	ASN
1	R	62	ASN

5.3.3 RNA ⓘ

There are no RNA molecules in this entry.

5.4 Non-standard residues in protein, DNA, RNA chains ⓘ

2 non-standard protein/DNA/RNA residues are modelled in this entry.

In the following table, the Counts columns list the number of bonds (or angles) for which Mogul statistics could be retrieved, the number of bonds (or angles) that are observed in the model and the number of bonds (or angles) that are defined in the Chemical Component Dictionary. The Link column lists molecule types, if any, to which the group is linked. The Z score for a bond length (or angle) is the number of standard deviations the observed value is removed from the expected value. A bond length (or angle) with $|Z| > 2$ is considered an outlier worth inspection. RMSZ is the root-mean-square of all Z scores of the bond lengths (or angles).

Mol	Type	Chain	Res	Link	Bond lengths			Bond angles		
					Counts	RMSZ	$\# Z > 2$	Counts	RMSZ	$\# Z > 2$
6	DPN	C	6	6,7	10,11,12	0.45	0	10,13,15	0.61	0
6	DAL	C	4	6	3,4,5	0.40	0	2,4,6	0.93	0

In the following table, the Chirals column lists the number of chiral outliers, the number of chiral centers analysed, the number of these observed in the model and the number defined in the Chemical Component Dictionary. Similar counts are reported in the Torsion and Rings columns. '-' means no outliers of that kind were identified.

Mol	Type	Chain	Res	Link	Chirals	Torsions	Rings
6	DPN	C	6	6,7	-	1/5/6/8	0/1/1/1
6	DAL	C	4	6	-	0/0/2/4	-

There are no bond length outliers.

There are no bond angle outliers.

There are no chirality outliers.

All (1) torsion outliers are listed below:

Mol	Chain	Res	Type	Atoms
6	C	6	DPN	O-C-CA-CB

There are no ring outliers.

No monomer is involved in short contacts.

5.5 Carbohydrates [i](#)

There are no monosaccharides in this entry.

5.6 Ligand geometry [i](#)

Of 1 ligands modelled in this entry, 1 is monoatomic - leaving 0 for Mogul analysis.

There are no bond length outliers.

There are no bond angle outliers.

There are no chirality outliers.

There are no torsion outliers.

There are no ring outliers.

No monomer is involved in short contacts.

5.7 Other polymers [i](#)

There are no such residues in this entry.

5.8 Polymer linkage issues [i](#)

There are no chain breaks in this entry.

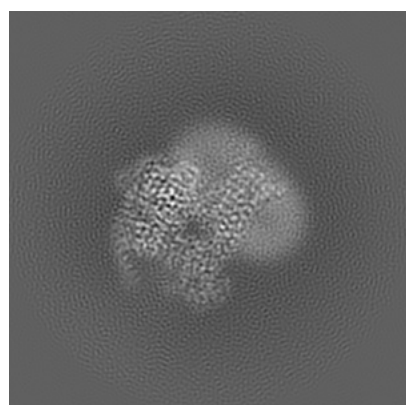
6 Map visualisation [i](#)

This section contains visualisations of the EMDB entry EMD-11927. These allow visual inspection of the internal detail of the map and identification of artifacts.

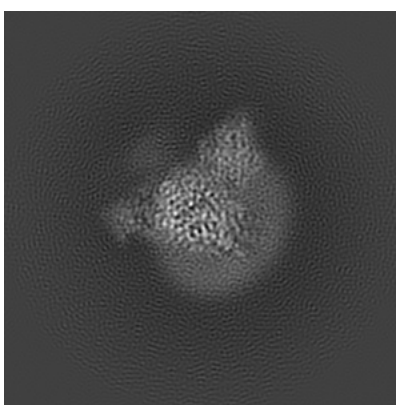
No raw map or half-maps were deposited for this entry and therefore no images, graphs, etc. pertaining to the raw map can be shown.

6.1 Orthogonal projections [i](#)

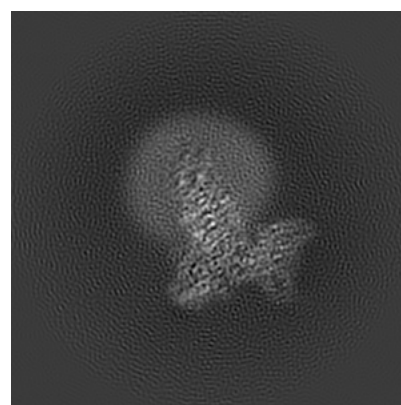
6.1.1 Primary map



X



Y

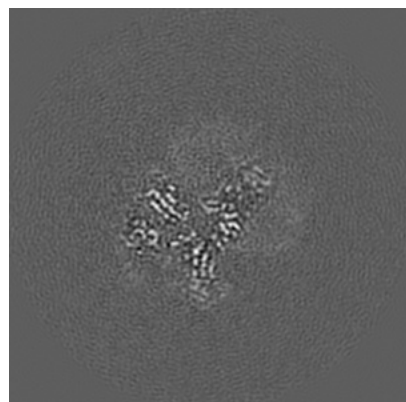


Z

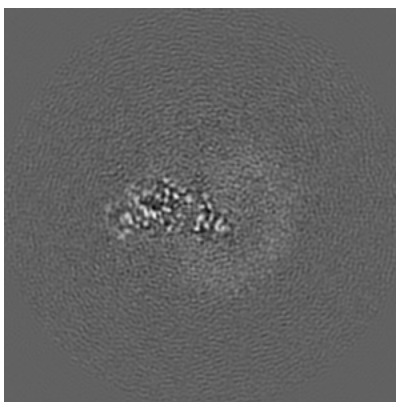
The images above show the map projected in three orthogonal directions.

6.2 Central slices [i](#)

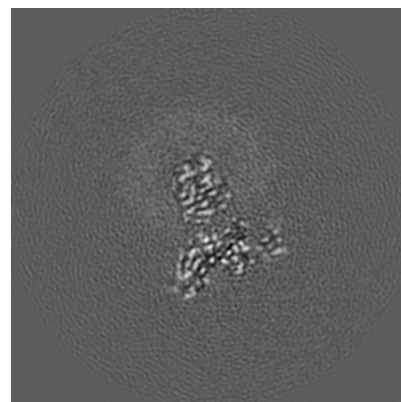
6.2.1 Primary map



X Index: 140



Y Index: 140

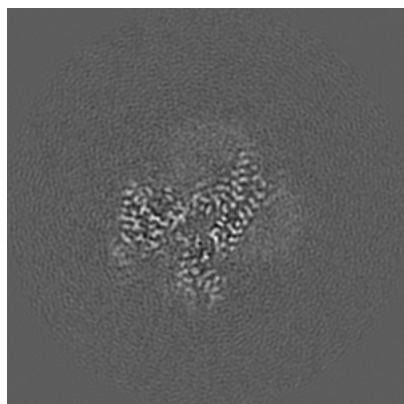


Z Index: 140

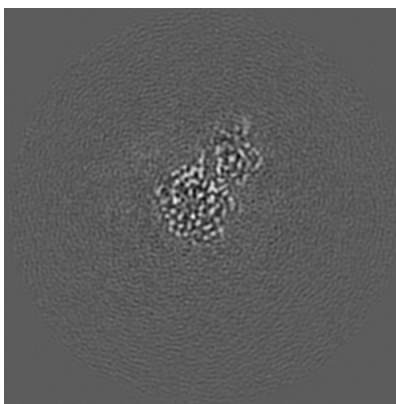
The images above show central slices of the map in three orthogonal directions.

6.3 Largest variance slices [i](#)

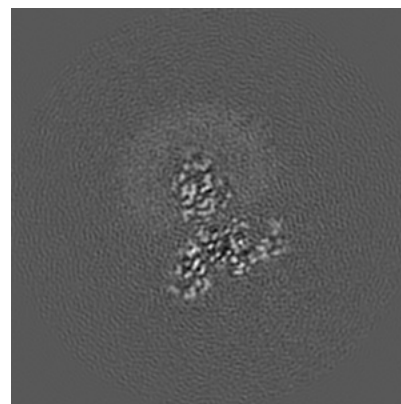
6.3.1 Primary map



X Index: 133



Y Index: 105

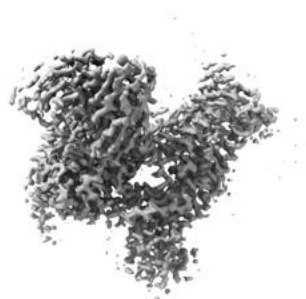


Z Index: 139

The images above show the largest variance slices of the map in three orthogonal directions.

6.4 Orthogonal surface views [i](#)

6.4.1 Primary map



X



Y



Z

The images above show the 3D surface view of the map at the recommended contour level 0.03. These images, in conjunction with the slice images, may facilitate assessment of whether an appropriate contour level has been provided.

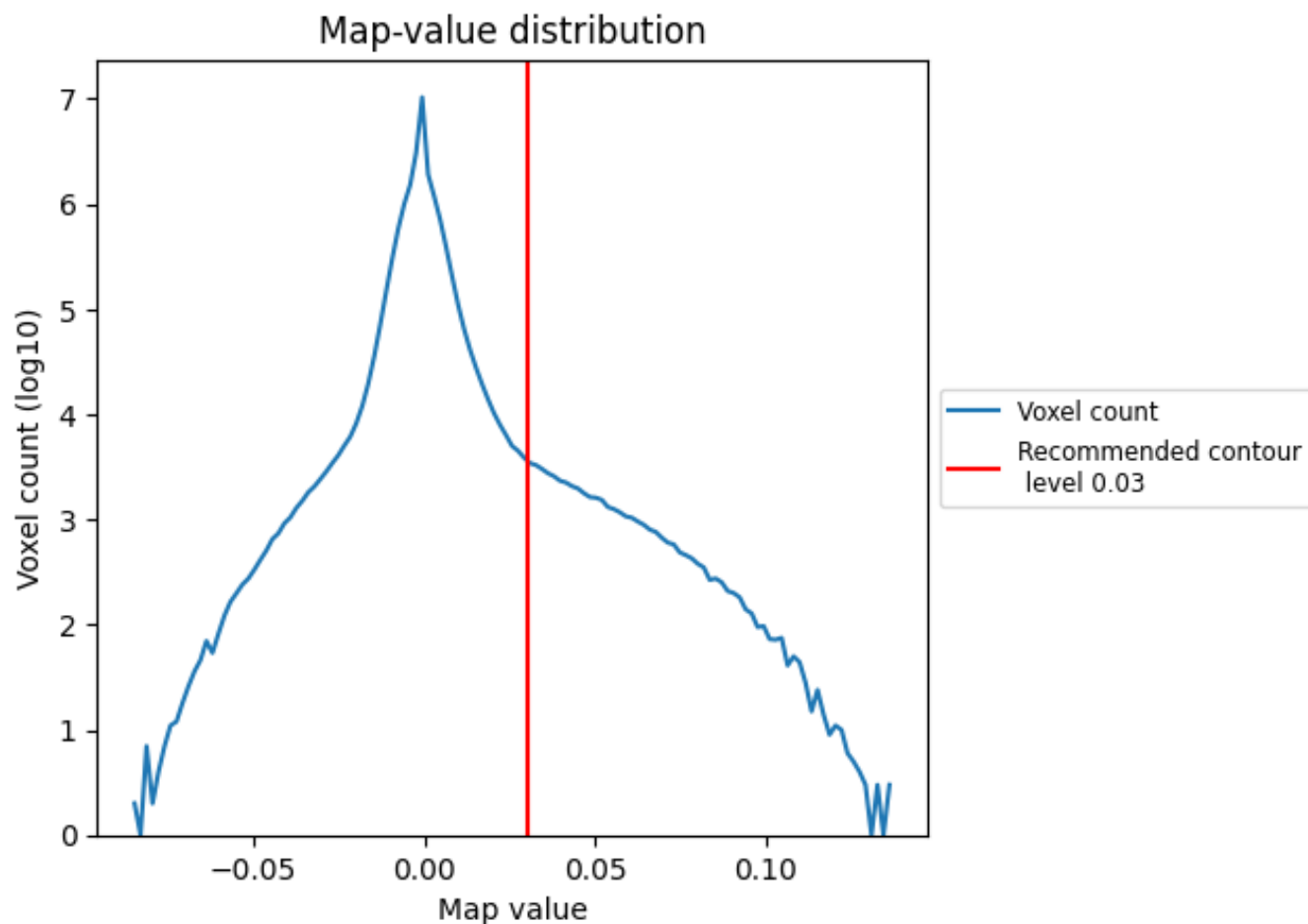
6.5 Mask visualisation

This section was not generated. No masks/segmentation were deposited.

7 Map analysis [i](#)

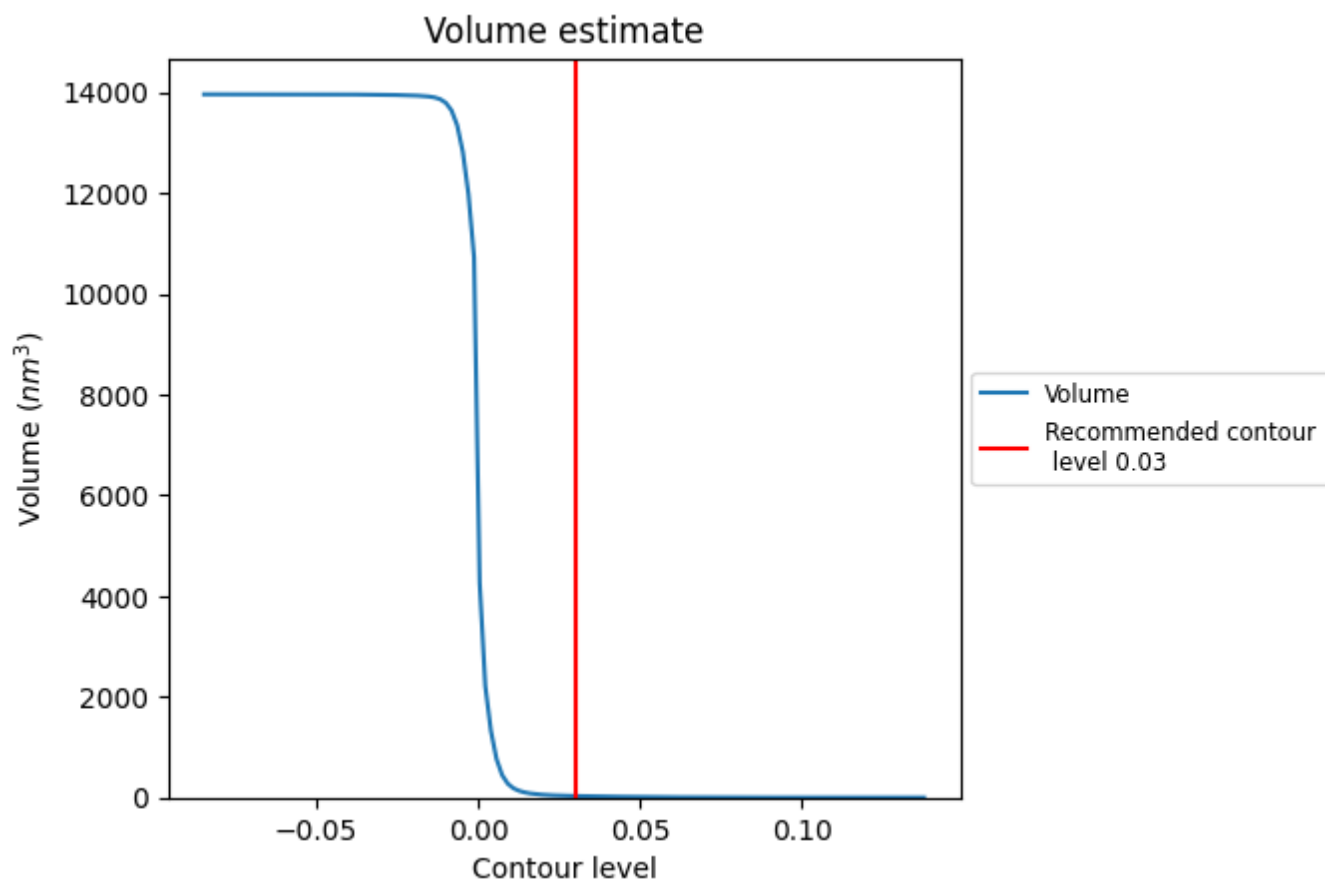
This section contains the results of statistical analysis of the map.

7.1 Map-value distribution [i](#)



The map-value distribution is plotted in 128 intervals along the x-axis. The y-axis is logarithmic. A spike in this graph at zero usually indicates that the volume has been masked.

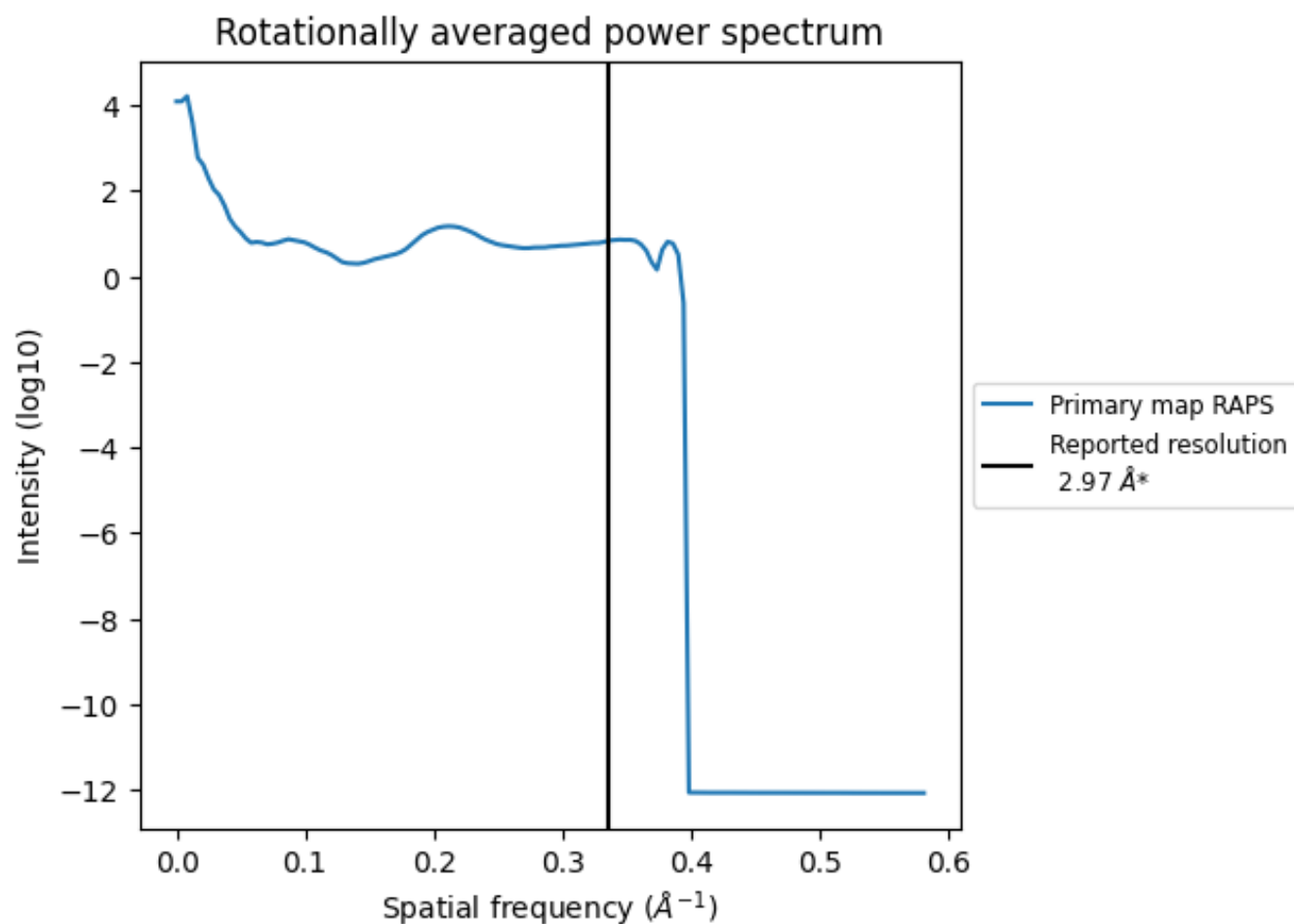
7.2 Volume estimate [i](#)



The volume at the recommended contour level is 31 nm³; this corresponds to an approximate mass of 28 kDa.

The volume estimate graph shows how the enclosed volume varies with the contour level. The recommended contour level is shown as a vertical line and the intersection between the line and the curve gives the volume of the enclosed surface at the given level.

7.3 Rotationally averaged power spectrum ⓘ



*Reported resolution corresponds to spatial frequency of 0.337 \AA^{-1}

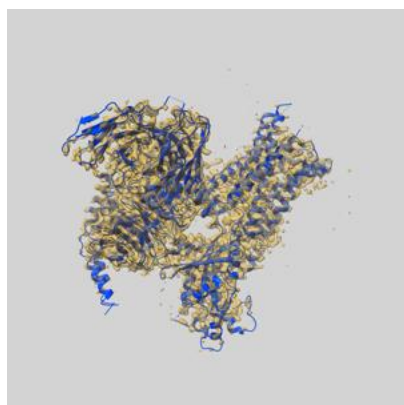
8 Fourier-Shell correlation

This section was not generated. No FSC curve or half-maps provided.

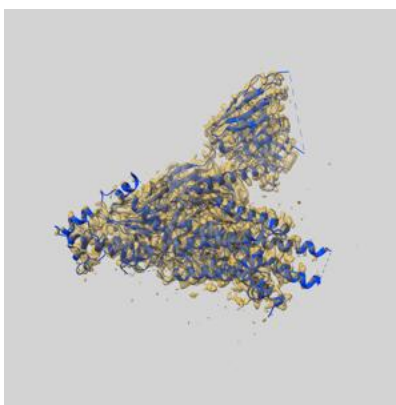
9 Map-model fit [i](#)

This section contains information regarding the fit between EMDB map EMD-11927 and PDB model 7AUE. Per-residue inclusion information can be found in section [3](#) on page [6](#).

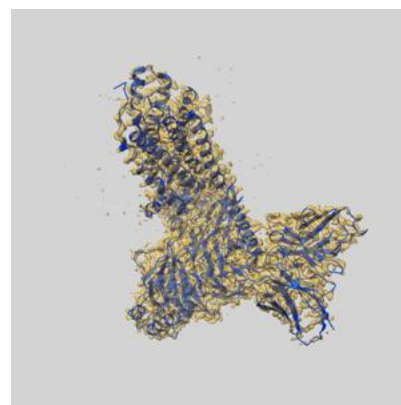
9.1 Map-model overlay [i](#)



X



Y



Z

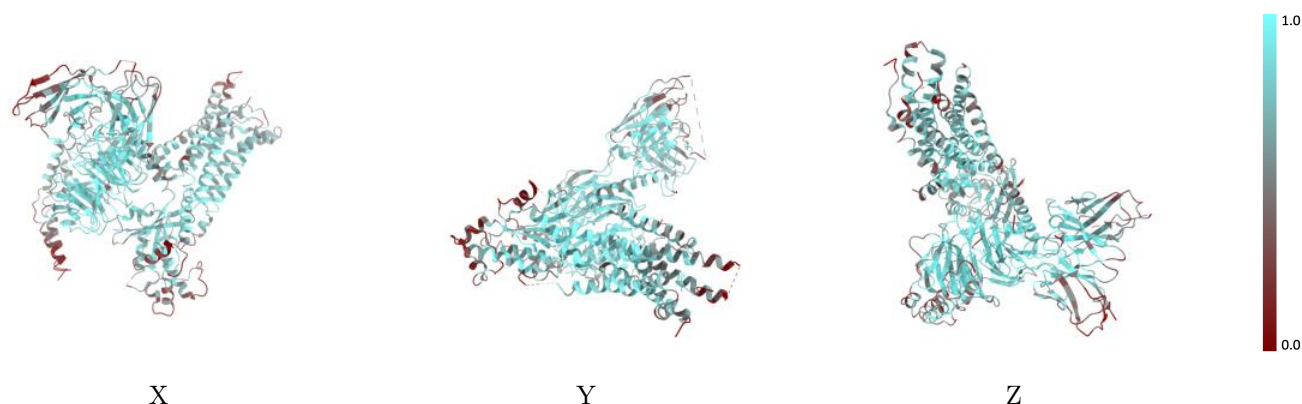
The images above show the 3D surface view of the map at the recommended contour level 0.03 at 50% transparency in yellow overlaid with a ribbon representation of the model coloured in blue. These images allow for the visual assessment of the quality of fit between the atomic model and the map.

9.2 Q-score mapped to coordinate model [i](#)



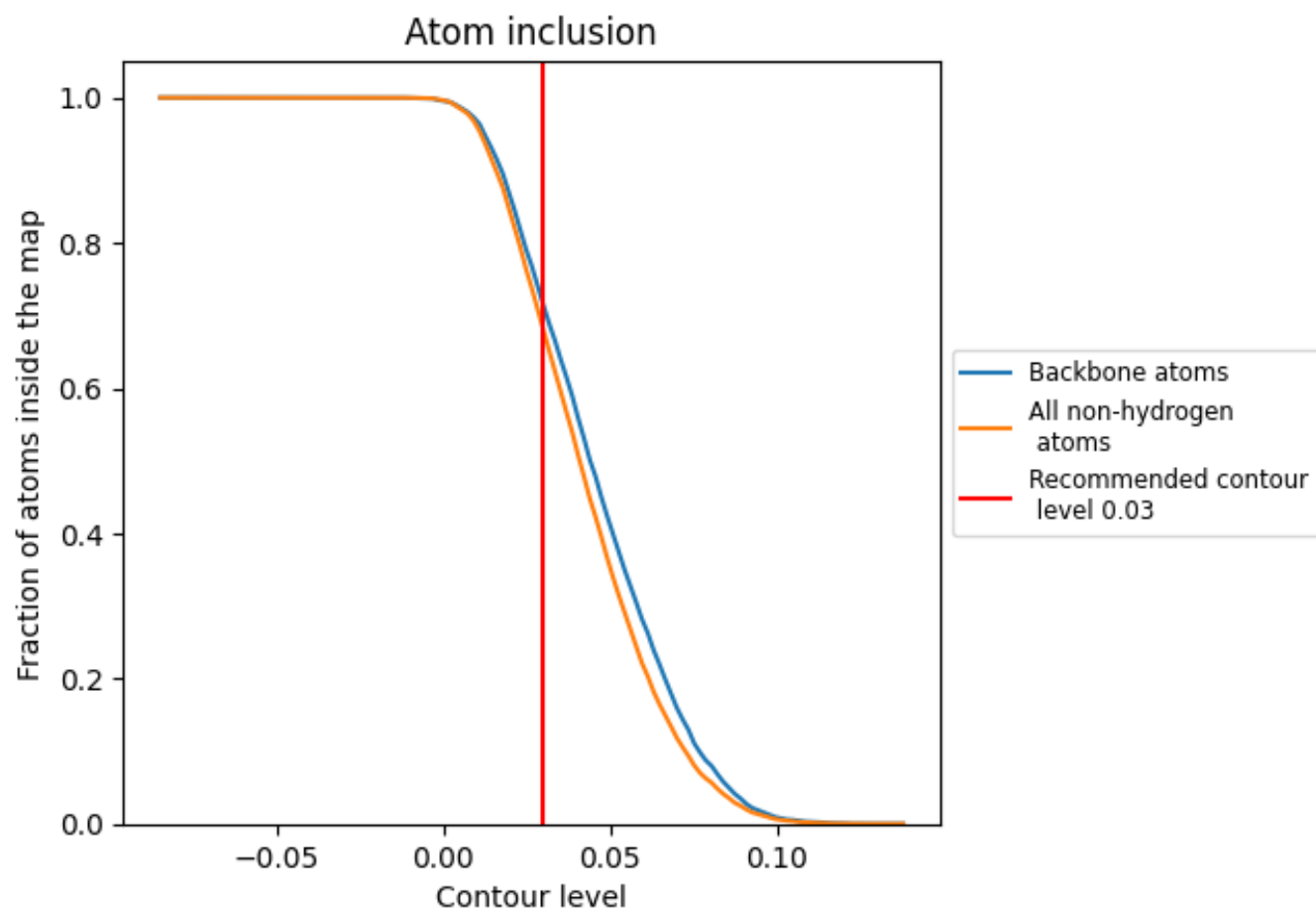
The images above show the model with each residue coloured according to its Q-score. This shows their resolvability in the map with higher Q-score values reflecting better resolvability. Please note: Q-score is calculating the resolvability of atoms, and thus high values are only expected at resolutions at which atoms can be resolved. Low Q-score values may therefore be expected for many entries.

9.3 Atom inclusion mapped to coordinate model [i](#)



The images above show the model with each residue coloured according to its atom inclusion. This shows to what extent they are inside the map at the recommended contour level (0.03).

9.4 Atom inclusion [i](#)



At the recommended contour level, 72% of all backbone atoms, 68% of all non-hydrogen atoms, are inside the map.

9.5 Map-model fit summary ⓘ

The table lists the average atom inclusion at the recommended contour level (0.03) and Q-score for the entire model and for each chain.

Chain	Atom inclusion	Q-score
All	<div><div></div>0.6827</div>	<div><div></div>0.5920</div>
A	<div><div></div>0.6326</div>	<div><div></div>0.5770</div>
B	<div><div></div>0.7770</div>	<div><div></div>0.6140</div>
C	<div><div></div>0.6528</div>	<div><div></div>0.5760</div>
G	<div><div></div>0.4408</div>	<div><div></div>0.5500</div>
R	<div><div></div>0.6734</div>	<div><div></div>0.5830</div>
S	<div><div></div>0.6696</div>	<div><div></div>0.5950</div>

1.0

0.0

<0.0