



wwPDB EM Validation Summary Report ⓘ

Mar 31, 2021 – 09:49 am BST

EMDB ID : EMD-1244
Title : Visualizing the ATPase cycle in a protein disaggregating machine: structural basis for substrate binding by ClpB.
Authors : Tsai, F.
Deposited on : 2006-07-13
Resolution : 11.20 Å(reported)

This is a wwPDB EM Validation Summary Report for a publicly released PDB entry.

We welcome your comments at validation@mail.wwpdb.org

A user guide is available at

<https://www.wwpdb.org/validation/2017/EMMapValidationReportHelp>

with specific help available everywhere you see the ⓘ symbol.

The following versions of software and data (see [references ⓘ](#)) were used in the production of this report:

EMDB validation analysis : 0.0.0.dev75
Validation Pipeline (wwPDB-VP) : 2.18

1 Experimental information

Property	Value	Source
EM reconstruction method	SINGLE PARTICLE	Depositor
Imposed symmetry	Not Provided	
Number of particles used	19008	Depositor
Resolution determination method	FSC 0.5 CUT-OFF	Depositor
CTF correction method	each CCD frame	Depositor
Microscope	JEOL 2010F	Depositor
Voltage (kV)	200	Depositor
Electron dose ($e^-/\text{\AA}^2$)	15	Depositor
Minimum defocus (nm)	1.2	Depositor
Maximum defocus (nm)	3.6	Depositor
Magnification	6900.0	Depositor
Image detector	GENERIC GATAN (4k x 4k)	Depositor
Maximum map value	5.931	Depositor
Minimum map value	-0.797	Depositor
Average map value	0.193	Depositor
Map value standard deviation	0.628	Depositor
Recommended contour level	1.62	Depositor
Map size (Å)	208.608, 208.608, 208.608	wwPDB
Map dimensions	96, 96, 96	wwPDB
Map angles (°)	90, 90, 90	wwPDB
Pixel spacing (Å)	2.173, 2.173, 2.173	Depositor

2 Map visualisation [i](#)

This section contains visualisations of the EMDB entry EMD-1244. These allow visual inspection of the internal detail of the map and identification of artifacts.

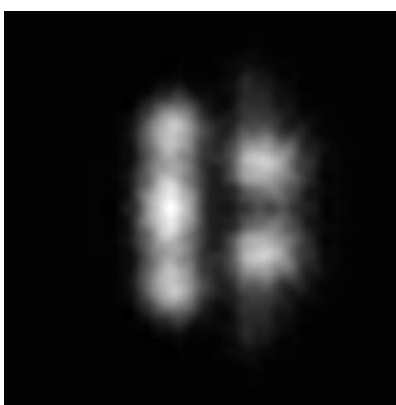
No raw map or half-maps were deposited for this entry and therefore no images, graphs, etc. pertaining to the raw map can be shown.

2.1 Orthogonal projections [i](#)

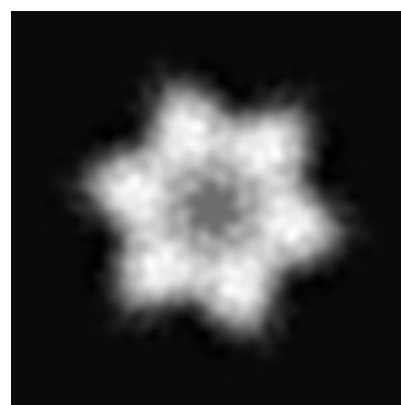
2.1.1 Primary map



X



Y



Z

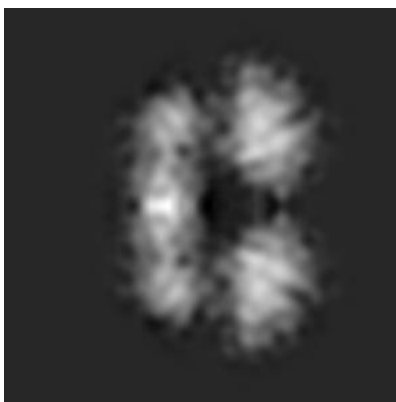
The images above show the map projected in three orthogonal directions.

2.2 Central slices [i](#)

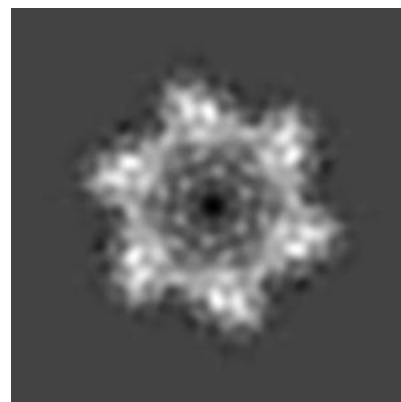
2.2.1 Primary map



X Index: 48



Y Index: 48



Z Index: 48

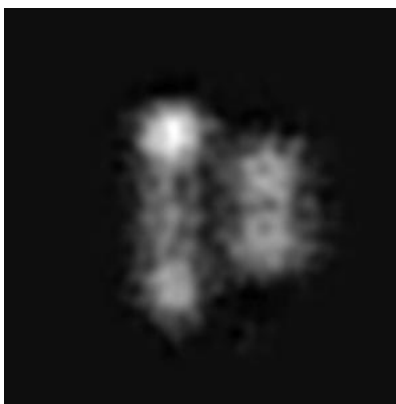
The images above show central slices of the map in three orthogonal directions.

2.3 Largest variance slices [i](#)

2.3.1 Primary map



X Index: 45



Y Index: 61



Z Index: 40

The images above show the largest variance slices of the map in three orthogonal directions.

2.4 Orthogonal surface views [i](#)

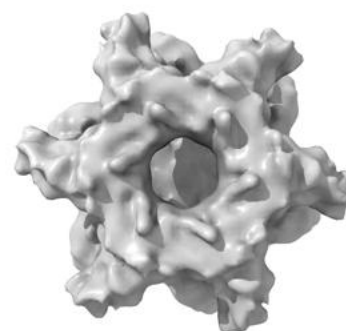
2.4.1 Primary map



X



Y



Z

The images above show the 3D surface view of the map at the recommended contour level 1.62. These images, in conjunction with the slice images, may facilitate assessment of whether an appropriate contour level has been provided.

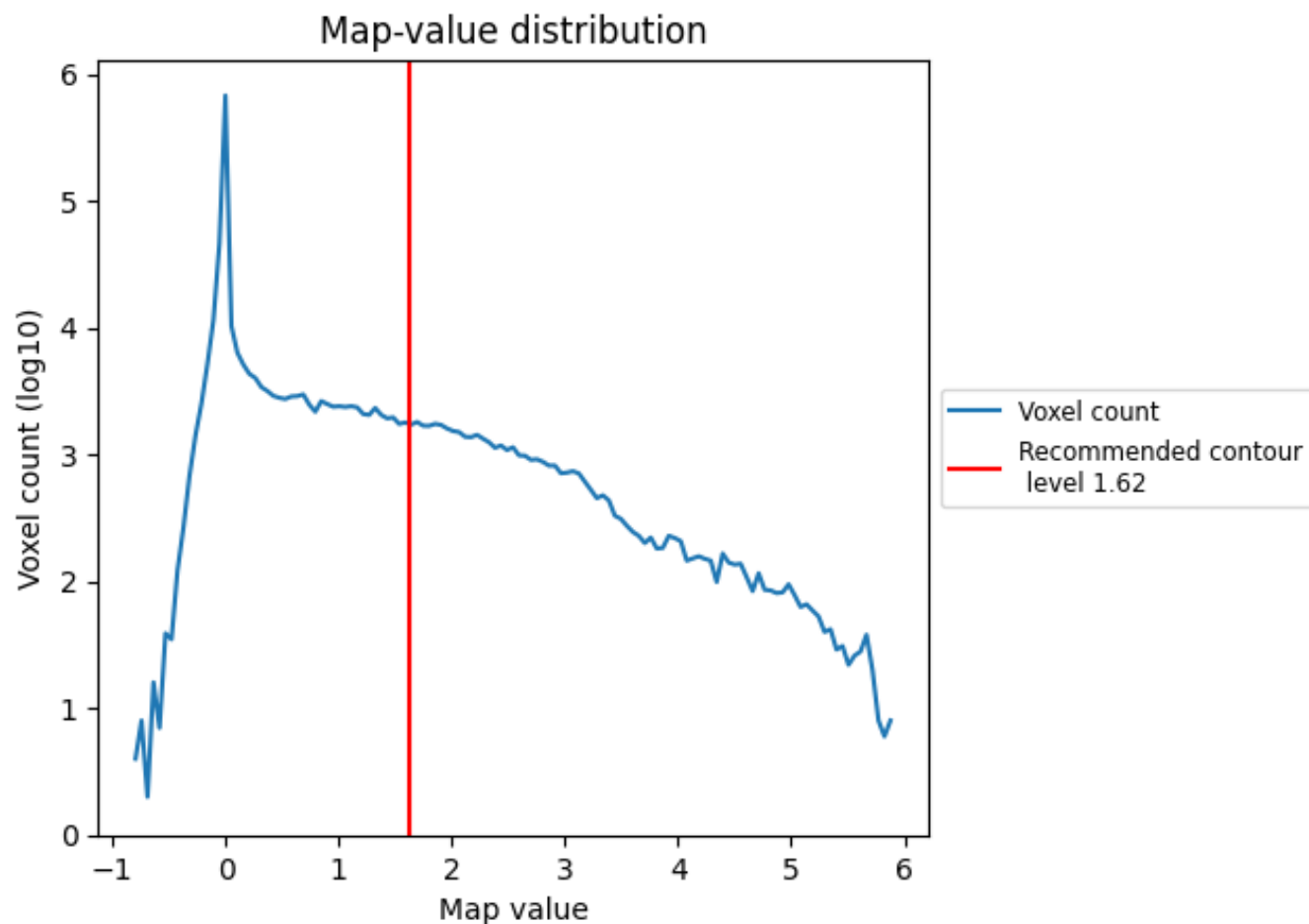
2.5 Mask visualisation

This section was not generated. No masks/segmentation were deposited.

3 Map analysis [i](#)

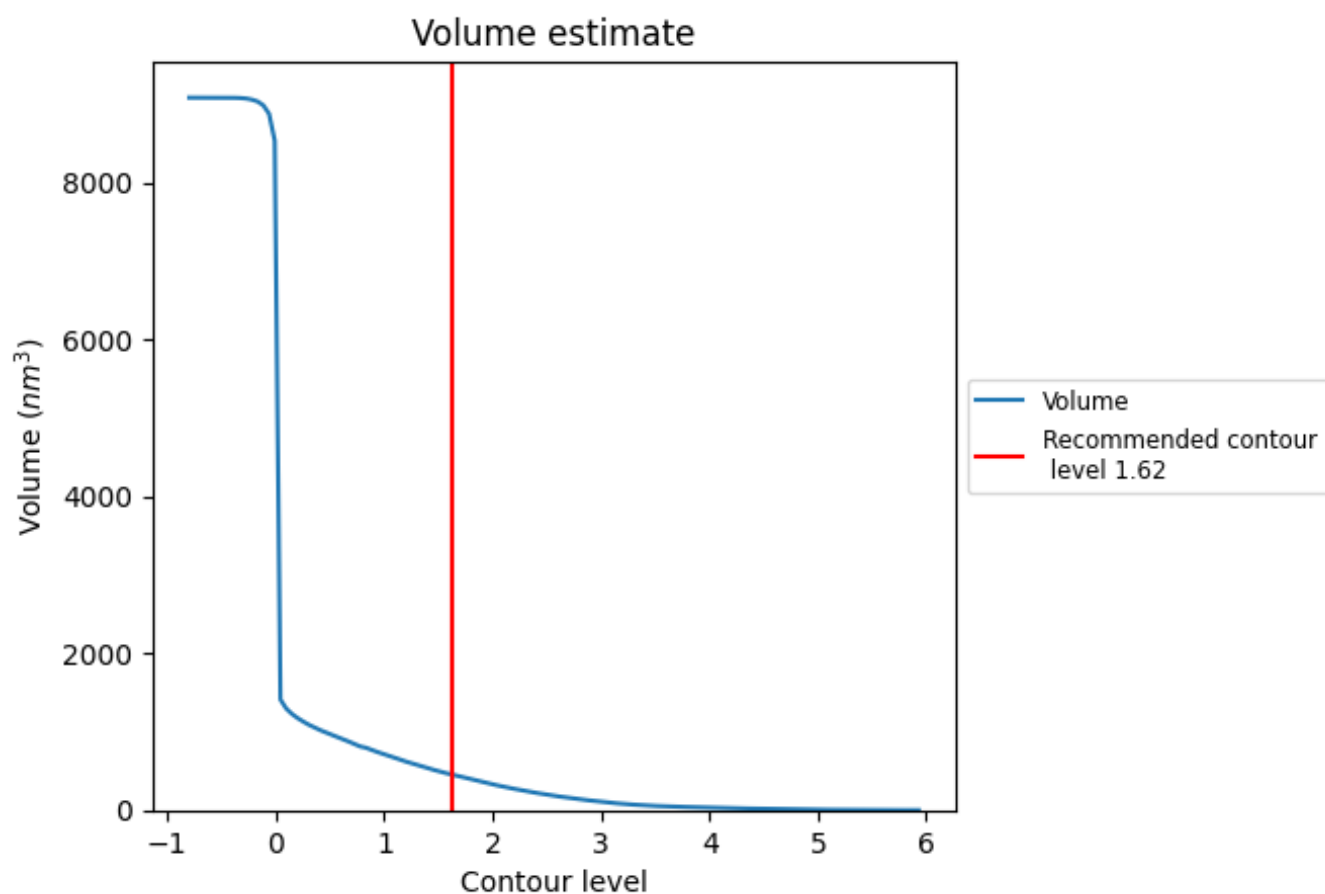
This section contains the results of statistical analysis of the map.

3.1 Map-value distribution [i](#)



The map-value distribution is plotted in 128 intervals along the x-axis. The y-axis is logarithmic. A spike in this graph at zero usually indicates that the volume has been masked.

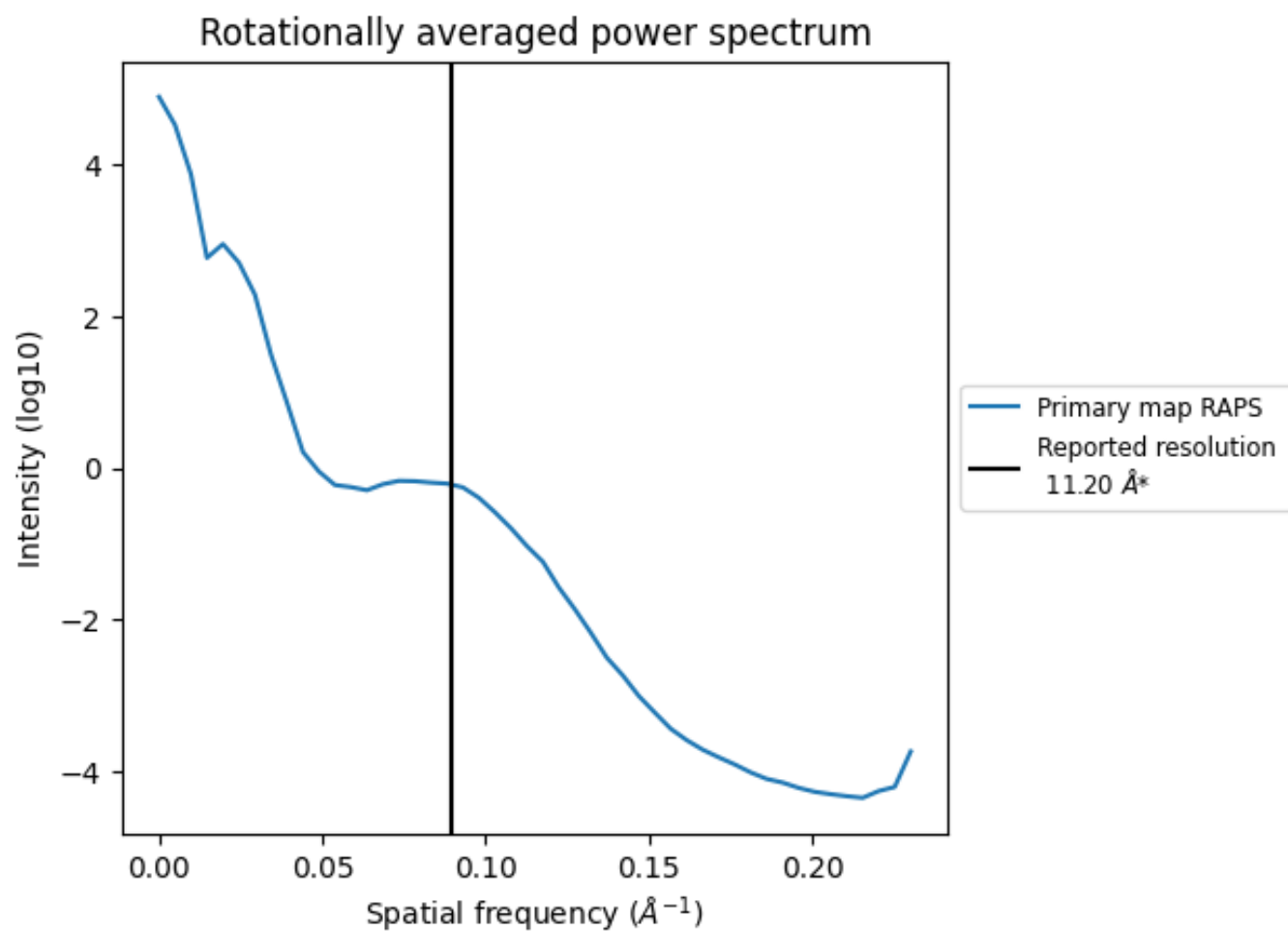
3.2 Volume estimate [i](#)



The volume at the recommended contour level is 456 nm³; this corresponds to an approximate mass of 412 kDa.

The volume estimate graph shows how the enclosed volume varies with the contour level. The recommended contour level is shown as a vertical line and the intersection between the line and the curve gives the volume of the enclosed surface at the given level.

3.3 Rotationally averaged power spectrum ⓘ



*Reported resolution corresponds to spatial frequency of 0.089 Å⁻¹

4 Fourier-Shell correlation ⓘ

This section was not generated. No FSC curve or half-maps provided.