



Full wwPDB EM Validation Report ⓘ

Oct 5, 2022 – 10:41 am BST

EMDB ID : EMD-13229
Title : Cryo-electron tomogram of a pseudotype virus particle generated during coinfection of Influenza A virus and Respiratory Syncytial virus in lung cells.
Authors : Vijayakrishnan, S.; Murcia, P.R.
Deposited on : 2021-07-16
Resolution : Not provided

This is a Full wwPDB EM Validation Report for a publicly released PDB entry.

We welcome your comments at validation@mail.wwpdb.org

A user guide is available at

<https://www.wwpdb.org/validation/2017/EMTomogramValidationReportHelp>

with specific help available everywhere you see the ⓘ symbol.

The types of validation reports are described at

<http://www.wwpdb.org/validation/2017/FAQs#types>.

The following versions of software and data (see [references ⓘ](#)) were used in the production of this report:

EMDB validation analysis : 0.0.1.dev43
Validation Pipeline (wwPDB-VP) : 2.31.2

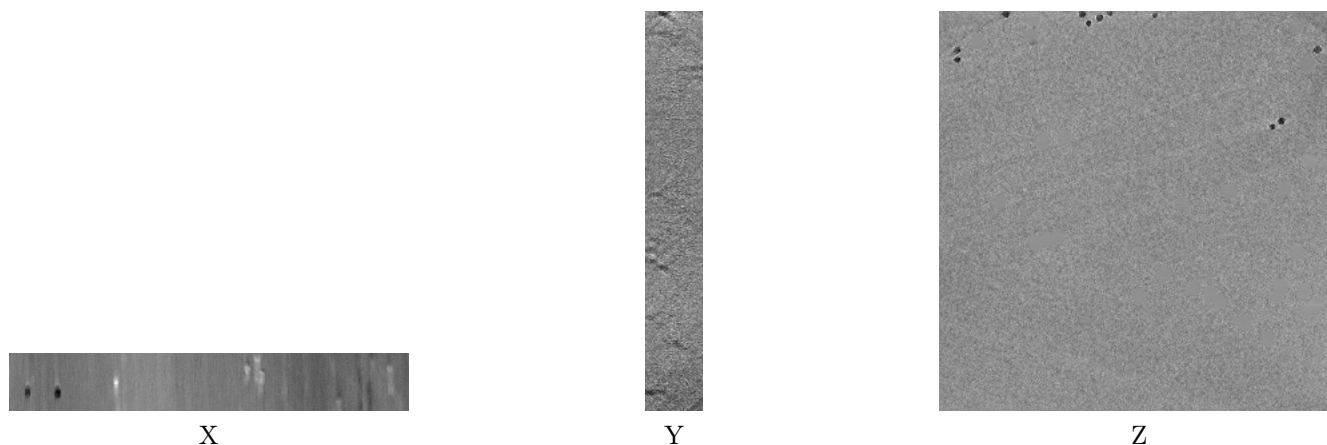
1 Experimental information

Property	Value	Source
EM reconstruction method	TOMOGRAPHY	Depositor
Imposed symmetry	Not Provided	
Number of tilted images used	61	Depositor
Resolution determination method	Not provided	
CTF correction method	CTF correction was carried out using the ctf-plotter module in IMOD.	Depositor
Microscope	JEOL CRYO ARM 300	Depositor
Voltage (kV)	300	Depositor
Electron dose ($e^-/\text{\AA}^2$)	1.6	Depositor
Minimum defocus (nm)	4.0	Depositor
Maximum defocus (nm)	5.0	Depositor
Magnification	50000.0	Depositor
Image detector	DIRECT ELECTRON DE-64 (8k x 8k)	Depositor
Maximum voxel value	1750.000	Depositor
Minimum voxel value	-1783.000	Depositor
Average voxel value	66.456	Depositor
Voxel value standard deviation	88.039	Depositor
Recommended contour level	Not applicable	
Tomogram size (\AA)	12279.808, 12279.808, 1750.8319	wwPDB
Tomogram dimensions	1024, 1024, 146	wwPDB
Tomogram angles ($^\circ$)	90.0, 90.0, 90.0	wwPDB
Grid spacing (\AA)	11.992, 11.992, 11.992	Depositor

2 Tomogram visualisation [i](#)

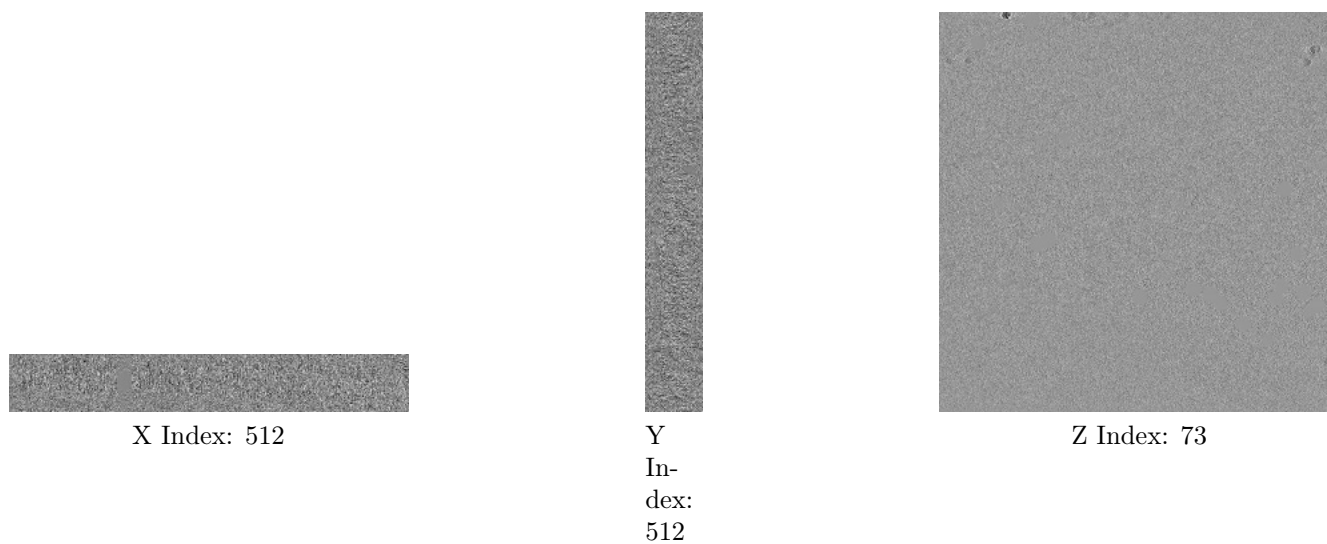
This section contains visualisations of the EMDB entry EMD-13229. These allow visual inspection of the internal detail of the tomogram and identification of artifacts.

2.1 Orthogonal projections [i](#)



The images above show the tomogram projected in three orthogonal directions.

2.2 Central slices [i](#)

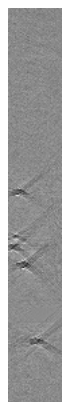


The images above show central slices of the tomogram in three orthogonal directions.

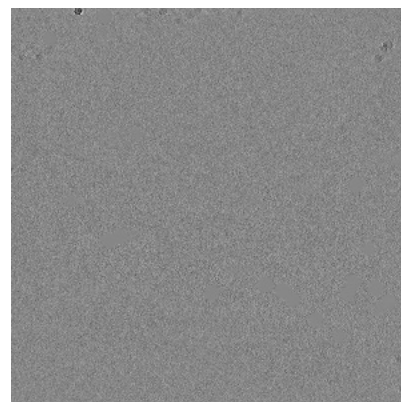
2.3 Largest variance slices [i](#)



X Index: 50



Y
In-
dex:
1011



Z Index: 71

The images above show the largest variance slices of the tomogram in three orthogonal directions.

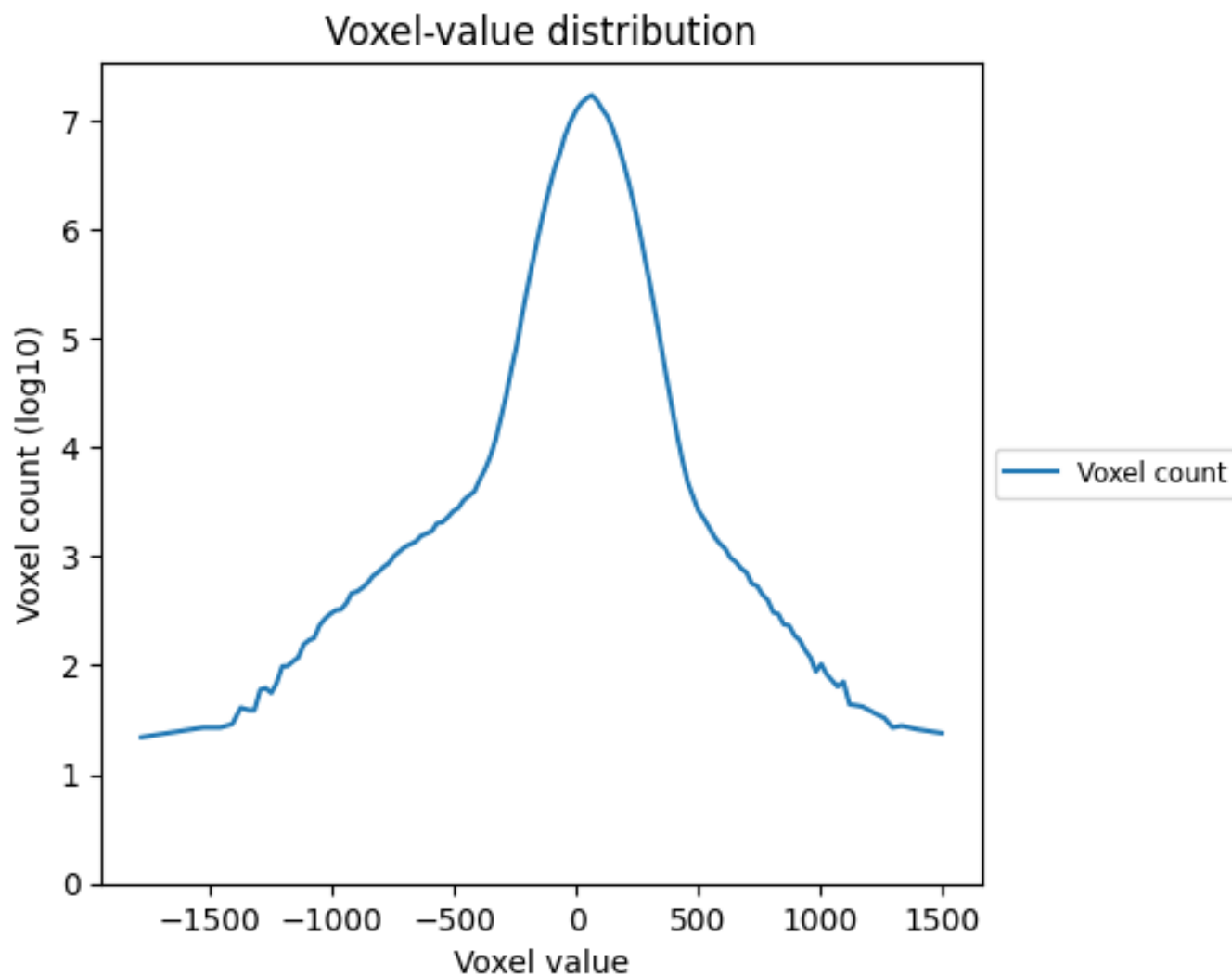
2.4 Mask visualisation [i](#)

This section was not generated. No masks/segmentation were deposited.

3 Tomogram analysis [i](#)

This section contains the results of statistical analysis of the tomogram.

3.1 Voxel-value distribution [i](#)



The voxel-value distribution is plotted in 128 intervals along the x-axis. The y-axis is logarithmic.