



## Full wwPDB EM Validation Report ⓘ

Feb 23, 2022 – 12:35 pm GMT

EMDB ID : EMD-13730  
Title : Cryo-electron tomography of an attached epibiotic cell of Ca. Absconditicoccus predator  
Authors : Gaisin, V.; Pilhofer, M.  
Deposited on : 2021-10-12  
Resolution : Not provided

This is a Full wwPDB EM Validation Report for a publicly released PDB entry.

We welcome your comments at [validation@mail.wwpdb.org](mailto:validation@mail.wwpdb.org)

A user guide is available at

<https://www.wwpdb.org/validation/2017/EMTomogramValidationReportHelp>

with specific help available everywhere you see the ⓘ symbol.

---

The following versions of software and data (see [references ⓘ](#)) were used in the production of this report:

EMDB validation analysis : 0.0.0.dev97  
Validation Pipeline (wwPDB-VP) : 2.26

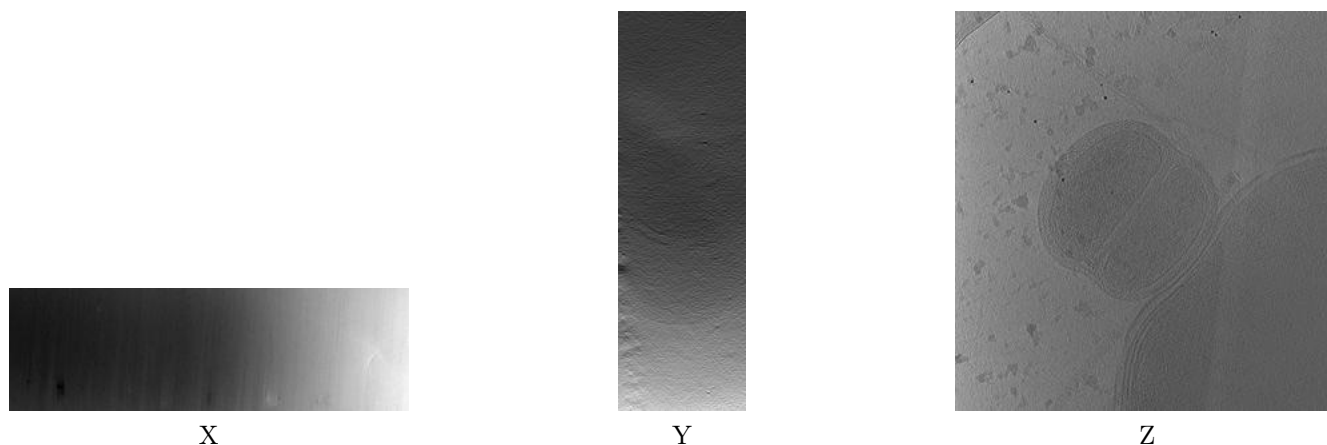
# 1 Experimental information

| Property                             | Value                         | Source    |
|--------------------------------------|-------------------------------|-----------|
| EM reconstruction method             | TOMOGRAPHY                    | Depositor |
| Imposed symmetry                     | Not Provided                  |           |
| Number of tilted images used         | 61                            | Depositor |
| Resolution determination method      | Not provided                  |           |
| CTF correction method                | Not provided                  |           |
| Microscope                           | FEI TITAN KRIOS               | Depositor |
| Voltage (kV)                         | 300                           | Depositor |
| Electron dose ( $e^-/\text{\AA}^2$ ) | 2.524                         | Depositor |
| Minimum defocus (nm)                 | Not provided                  |           |
| Maximum defocus (nm)                 | Not provided                  |           |
| Magnification                        | Not provided                  |           |
| Image detector                       | GATAN K3 (6k x 4k)            | Depositor |
| Maximum voxel value                  | 268.000                       | Depositor |
| Minimum voxel value                  | -371.000                      | Depositor |
| Average voxel value                  | 0.966                         | Depositor |
| Voxel value standard deviation       | 7.767                         | Depositor |
| Recommended contour level            | Not applicable                |           |
| Tomogram size ( $\text{\AA}$ )       | 11735.761, 12265.881, 3729.12 | wwPDB     |
| Tomogram dimensions                  | 642, 671, 204                 | wwPDB     |
| Tomogram angles ( $^\circ$ )         | 90.0, 90.0, 90.0              | wwPDB     |
| Grid spacing ( $\text{\AA}$ )        | 18.28, 18.28, 18.28           | Depositor |

## 2 Tomogram visualisation [i](#)

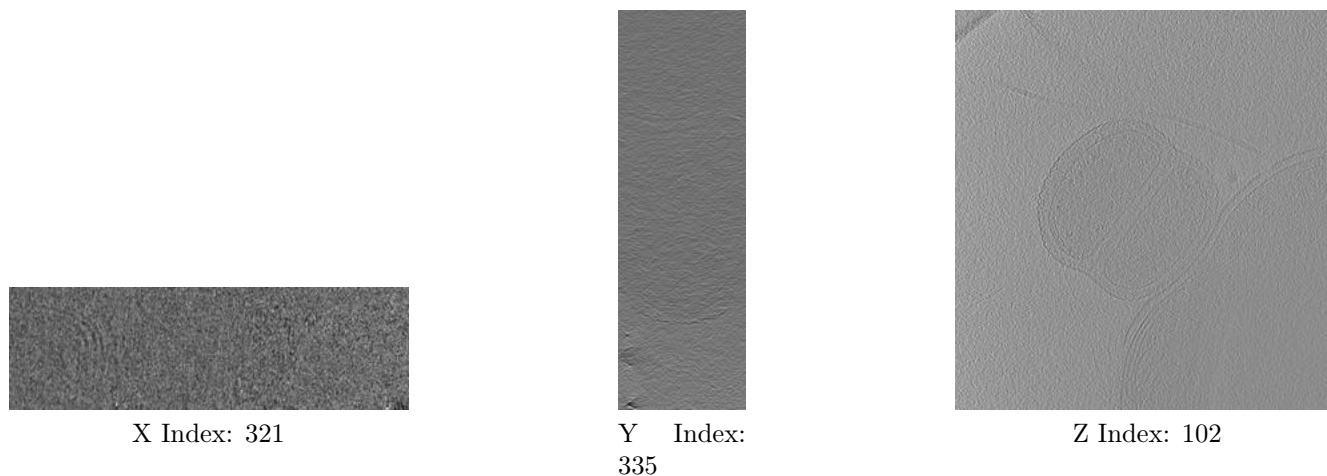
This section contains visualisations of the EMDB entry EMD-13730. These allow visual inspection of the internal detail of the tomogram and identification of artifacts.

### 2.1 Orthogonal projections [i](#)



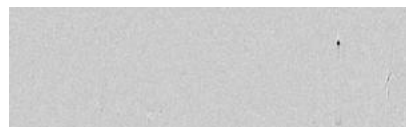
The images above show the tomogram projected in three orthogonal directions.

### 2.2 Central slices [i](#)



The images above show central slices of the tomogram in three orthogonal directions.

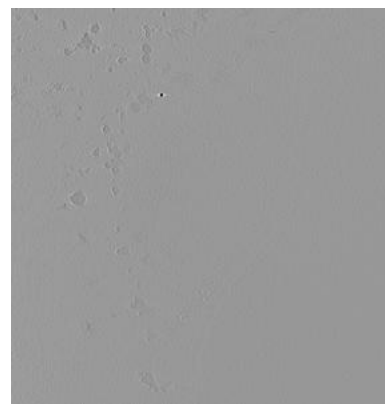
## 2.3 Largest variance slices [i](#)



X Index: 28



Y Index:  
635



Z Index: 8

The images above show the largest variance slices of the tomogram in three orthogonal directions.

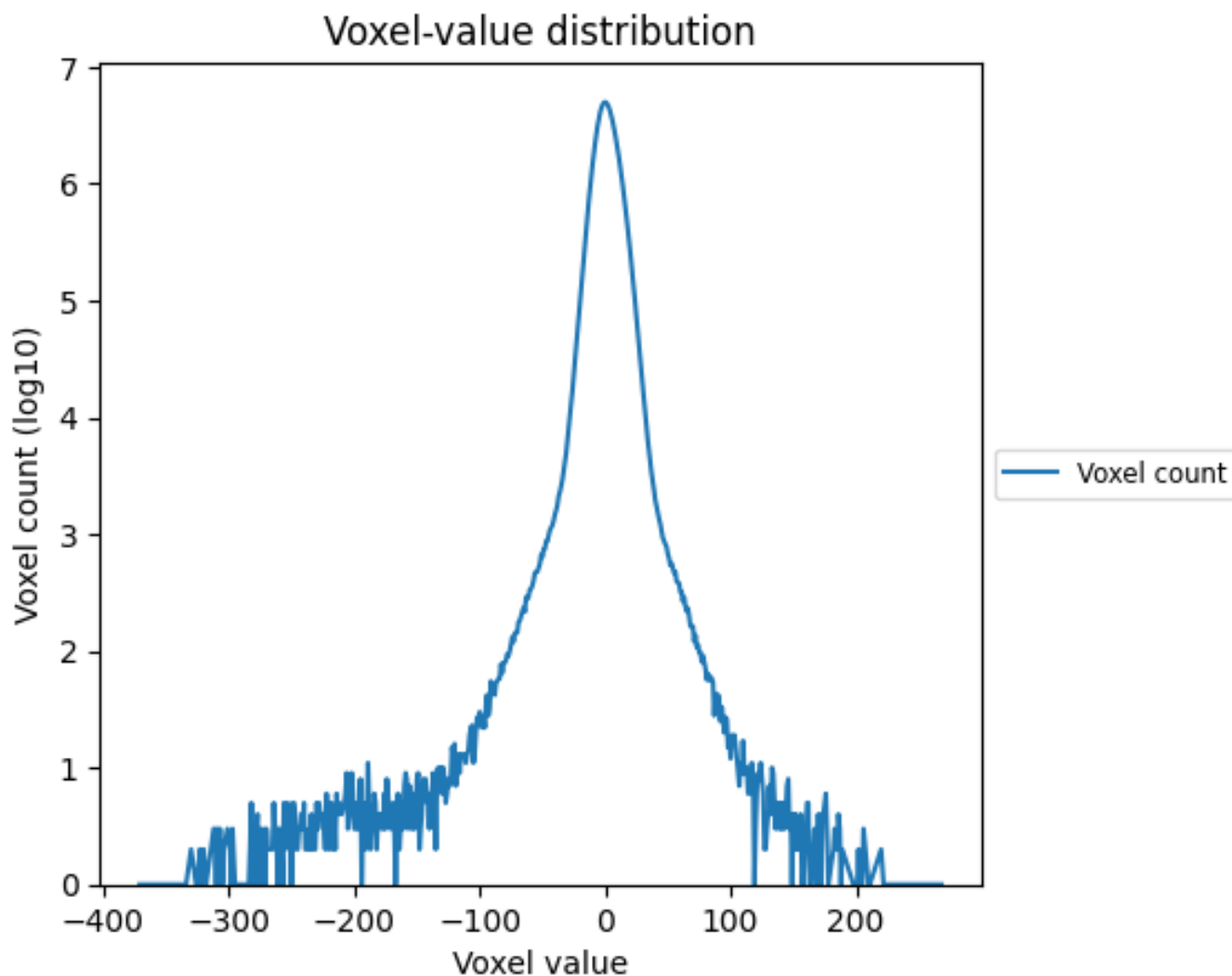
## 2.4 Mask visualisation [i](#)

This section was not generated. No masks/segmentation were deposited.

### 3 Tomogram analysis [i](#)

This section contains the results of statistical analysis of the tomogram.

#### 3.1 Voxel-value distribution [i](#)



The voxel-value distribution is plotted in 128 intervals along the x-axis. The y-axis is logarithmic.