



## wwPDB EM Validation Summary Report ⓘ

Dec 22, 2022 – 04:23 pm GMT

PDB ID : 7Z1Z  
EMDB ID : EMD-14453  
Title : MVV strand transfer complex (STC) intasome in complex with LEDGF/p75  
at 3.5 Å resolution  
Authors : Pye, V.E.; Ballandras-Colas, A.; Cherepanov, P.  
Deposited on : 2022-02-25  
Resolution : 3.50 Å (reported)  
Based on initial models : 3HPH, 5M0R

This is a wwPDB EM Validation Summary Report for a publicly released PDB entry.

We welcome your comments at [validation@mail.wwpdb.org](mailto:validation@mail.wwpdb.org)

A user guide is available at

<https://www.wwpdb.org/validation/2017/EMValidationReportHelp>  
with specific help available everywhere you see the ⓘ symbol.

The types of validation reports are described at

<http://www.wwpdb.org/validation/2017/FAQs#types>.

---

The following versions of software and data (see [references ⓘ](#)) were used in the production of this report:

EMDB validation analysis : 0.0.1.dev43  
MolProbity : 4.02b-467  
Percentile statistics : 20191225.v01 (using entries in the PDB archive December 25th 2019)  
MapQ : 1.9.9  
Ideal geometry (proteins) : Engh & Huber (2001)  
Ideal geometry (DNA, RNA) : Parkinson et al. (1996)  
Validation Pipeline (wwPDB-VP) : 2.31.3

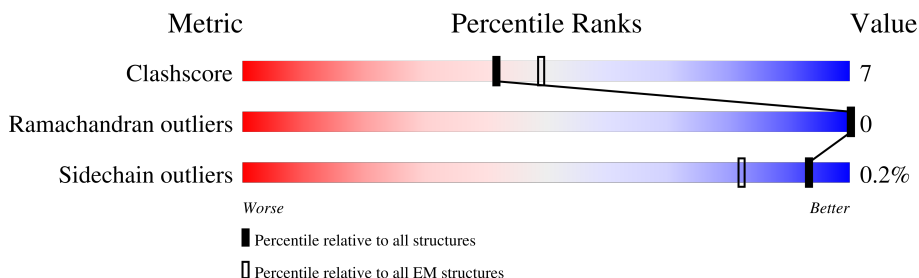
# 1 Overall quality at a glance

The following experimental techniques were used to determine the structure:

*ELECTRON MICROSCOPY*

The reported resolution of this entry is 3.50 Å.

Percentile scores (ranging between 0-100) for global validation metrics of the entry are shown in the following graphic. The table shows the number of entries on which the scores are based.



Metric	Whole archive (#Entries)	EM structures (#Entries)
Clashscore	158937	4297
Ramachandran outliers	154571	4023
Sidechain outliers	154315	3826

The table below summarises the geometric issues observed across the polymeric chains and their fit to the map. The red, orange, yellow and green segments of the bar indicate the fraction of residues that contain outliers for  $\geq 3$ , 2, 1 and 0 types of geometric quality criteria respectively. A grey segment represents the fraction of residues that are not modelled. The numeric value for each fraction is indicated below the corresponding segment, with a dot representing fractions  $\leq 5\%$ . The upper red bar (where present) indicates the fraction of residues that have poor fit to the EM map (all-atom inclusion  $< 40\%$ ). The numeric value is given above the bar.

Mol	Chain	Length	Quality of chain
1	A	281	
1	B	281	
1	C	281	
1	D	281	
1	E	281	
1	F	281	
1	G	281	
1	H	281	

Continued on next page...

Continued from previous page...

Mol	Chain	Length	Quality of chain
1	I	281	
1	J	281	
1	K	281	
1	L	281	
1	M	281	
1	N	281	
1	O	281	
1	P	281	
2	Q	95	
2	R	95	
3	X	23	
3	Y	23	
4	W	50	
4	Z	50	
5	U	23	
5	a	23	

## 2 Entry composition

There are 6 unique types of molecules in this entry. The entry contains 35605 atoms, of which 0 are hydrogens and 0 are deuteriums.

In the tables below, the AltConf column contains the number of residues with at least one atom in alternate conformation and the Trace column contains the number of residues modelled with at most 2 atoms.

- Molecule 1 is a protein called Pol polyprotein.

Mol	Chain	Residues	Atoms					AltConf	Trace
1	A	276	Total	C	N	O	S	0	0
			2235	1421	395	410	9		
1	B	203	Total	C	N	O	S	0	0
			1639	1041	280	311	7		
1	C	262	Total	C	N	O	S	0	0
			2130	1358	372	392	8		
1	D	252	Total	C	N	O	S	0	0
			2051	1313	358	374	6		
1	E	260	Total	C	N	O	S	0	0
			2116	1348	370	390	8		
1	F	261	Total	C	N	O	S	0	0
			2115	1347	371	389	8		
1	G	203	Total	C	N	O	S	0	0
			1647	1049	281	310	7		
1	H	217	Total	C	N	O	S	0	0
			1761	1129	308	318	6		
1	I	276	Total	C	N	O	S	0	0
			2235	1421	395	410	9		
1	J	203	Total	C	N	O	S	0	0
			1639	1041	280	311	7		
1	K	262	Total	C	N	O	S	0	0
			2130	1358	372	392	8		
1	L	252	Total	C	N	O	S	0	0
			2051	1313	358	374	6		
1	M	260	Total	C	N	O	S	0	0
			2116	1348	370	390	8		
1	N	261	Total	C	N	O	S	0	0
			2115	1347	371	389	8		
1	O	203	Total	C	N	O	S	0	0
			1647	1049	281	310	7		
1	P	217	Total	C	N	O	S	0	0
			1761	1129	308	318	6		

- Molecule 2 is a protein called PC4 and SFRS1-interacting protein.

Mol	Chain	Residues	Atoms					AltConf	Trace
2	R	82	Total	C	N	O	S	0	0
			674	424	121	122	7		
2	Q	81	Total	C	N	O	S	0	0
			667	419	120	121	7		

There are 12 discrepancies between the modelled and reference sequences:

Chain	Residue	Modelled	Actual	Comment	Reference
R	436	LEU	-	expression tag	UNP O75475
R	437	GLU	-	expression tag	UNP O75475
R	438	VAL	-	expression tag	UNP O75475
R	439	LEU	-	expression tag	UNP O75475
R	440	PHE	-	expression tag	UNP O75475
R	441	GLN	-	expression tag	UNP O75475
Q	436	LEU	-	expression tag	UNP O75475
Q	437	GLU	-	expression tag	UNP O75475
Q	438	VAL	-	expression tag	UNP O75475
Q	439	LEU	-	expression tag	UNP O75475
Q	440	PHE	-	expression tag	UNP O75475
Q	441	GLN	-	expression tag	UNP O75475

- Molecule 3 is a DNA chain called DNA (5'-D(\*GP\*CP\*TP\*GP\*CP\*GP\*AP\*GP\*AP\*TP\*CP\*CP\*GP\*CP\*TP\*CP\*CP\*GP\*GP\*TP\*G)-3').

Mol	Chain	Residues	Atoms					AltConf	Trace
3	X	21	Total	C	N	O	P	0	0
			428	203	79	126	20		
3	Y	21	Total	C	N	O	P	0	0
			428	203	79	126	20		

- Molecule 4 is a DNA chain called DNA (37-MER).

Mol	Chain	Residues	Atoms					AltConf	Trace
4	W	37	Total	C	N	O	P	0	0
			752	356	142	217	37		
4	Z	37	Total	C	N	O	P	0	0
			752	356	142	217	37		

- Molecule 5 is a DNA chain called DNA (5'-D(P\*TP\*TP\*GP\*AP\*TP\*TP\*AP\*GP\*GP\*GP\*TP\*G)-3').

Mol	Chain	Residues	Atoms					AltConf	Trace
5	U	12	Total	C	N	O	P	0	0
			252	120	45	75	12		
5	a	12	Total	C	N	O	P	0	0
			252	120	45	75	12		

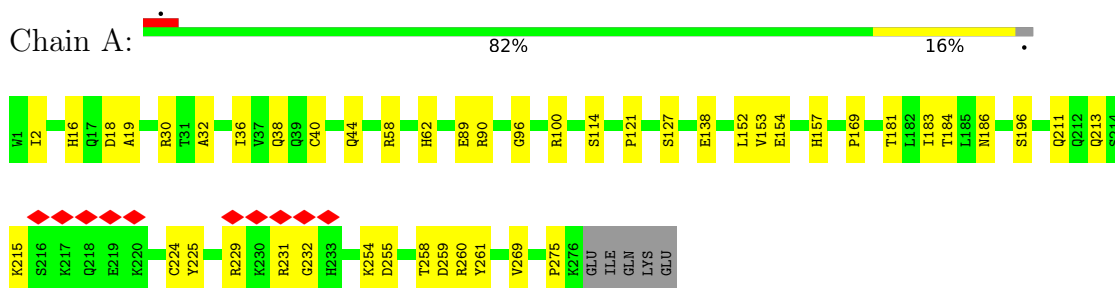
- Molecule 6 is ZINC ION (three-letter code: ZN) (formula: Zn).

Mol	Chain	Residues	Atoms		AltConf
6	A	1	Total	Zn	0
			1	1	
6	B	1	Total	Zn	0
			1	1	
6	C	1	Total	Zn	0
			1	1	
6	E	1	Total	Zn	0
			1	1	
6	F	1	Total	Zn	0
			1	1	
6	G	1	Total	Zn	0
			1	1	
6	I	1	Total	Zn	0
			1	1	
6	J	1	Total	Zn	0
			1	1	
6	K	1	Total	Zn	0
			1	1	
6	M	1	Total	Zn	0
			1	1	
6	N	1	Total	Zn	0
			1	1	
6	O	1	Total	Zn	0
			1	1	

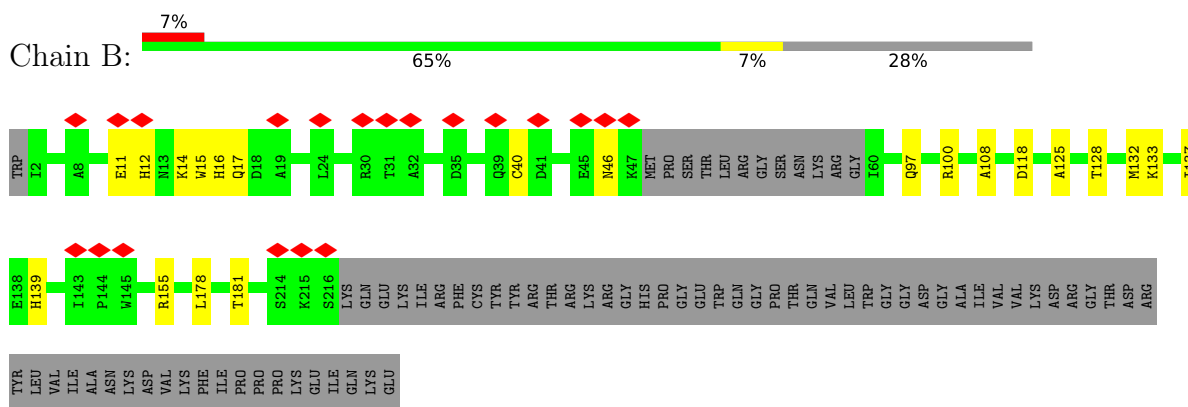
### 3 Residue-property plots [i](#)

These plots are drawn for all protein, RNA, DNA and oligosaccharide chains in the entry. The first graphic for a chain summarises the proportions of the various outlier classes displayed in the second graphic. The second graphic shows the sequence view annotated by issues in geometry and atom inclusion in map density. Residues are color-coded according to the number of geometric quality criteria for which they contain at least one outlier: green = 0, yellow = 1, orange = 2 and red = 3 or more. A red diamond above a residue indicates a poor fit to the EM map for this residue (all-atom inclusion < 40%). Stretches of 2 or more consecutive residues without any outlier are shown as a green connector. Residues present in the sample, but not in the model, are shown in grey.

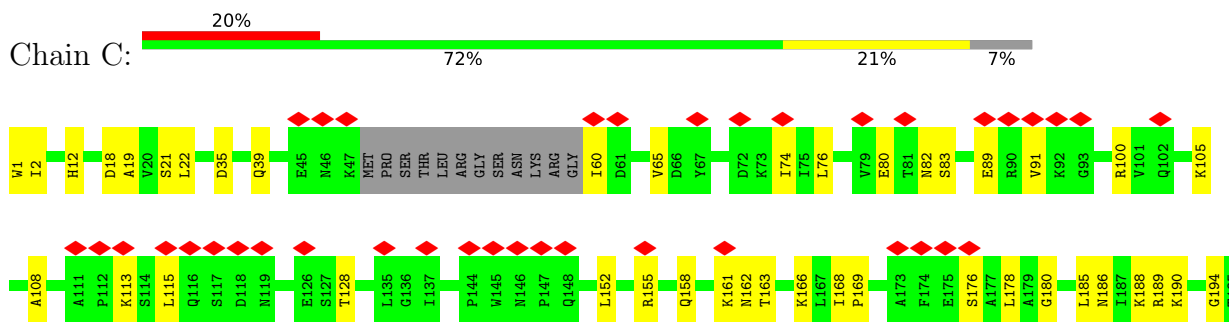
#### • Molecule 1: Pol polyprotein

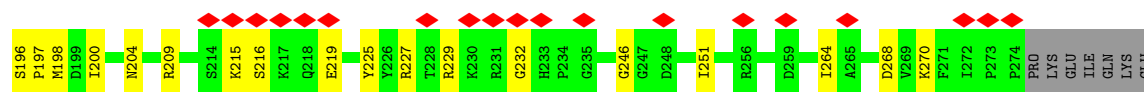


#### • Molecule 1: Pol polyprotein

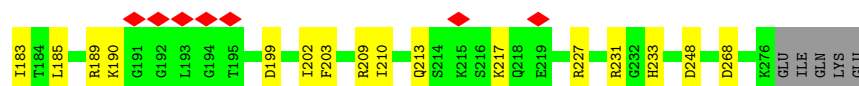
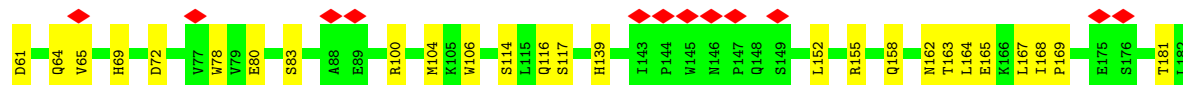
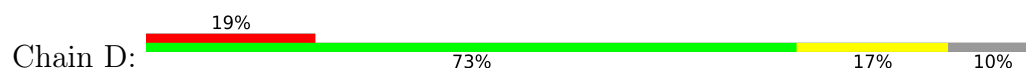


#### • Molecule 1: Pol polyprotein

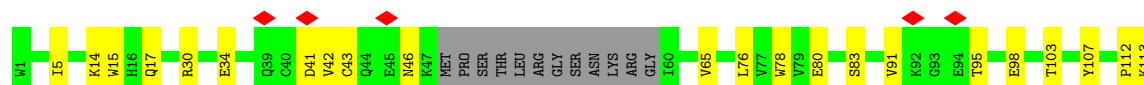




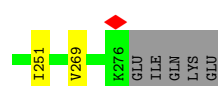
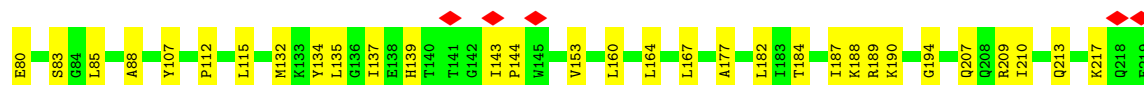
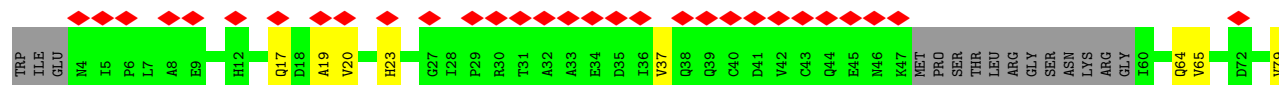
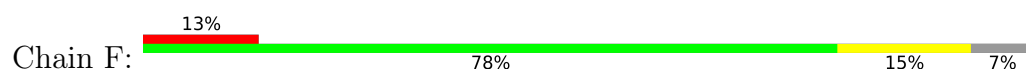
- Molecule 1: Pol polypeptide



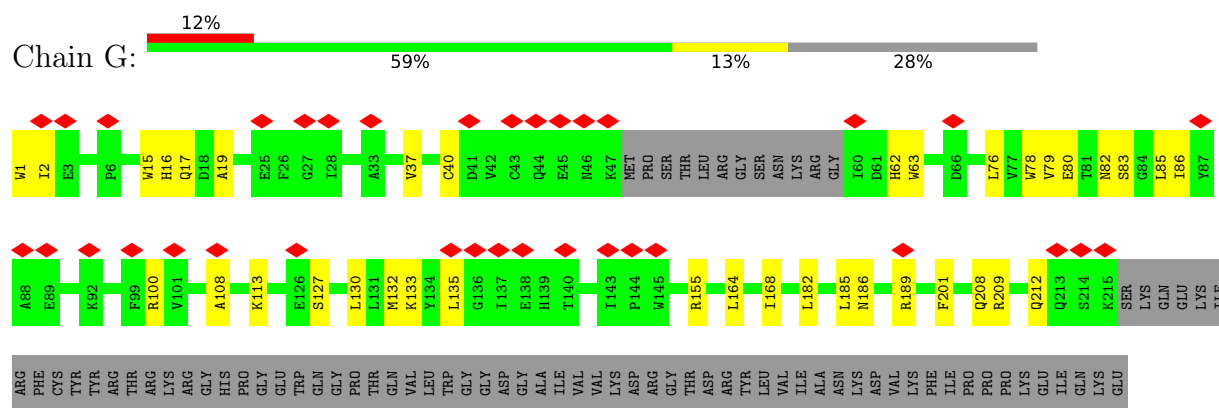
- Molecule 1: Pol polypeptide



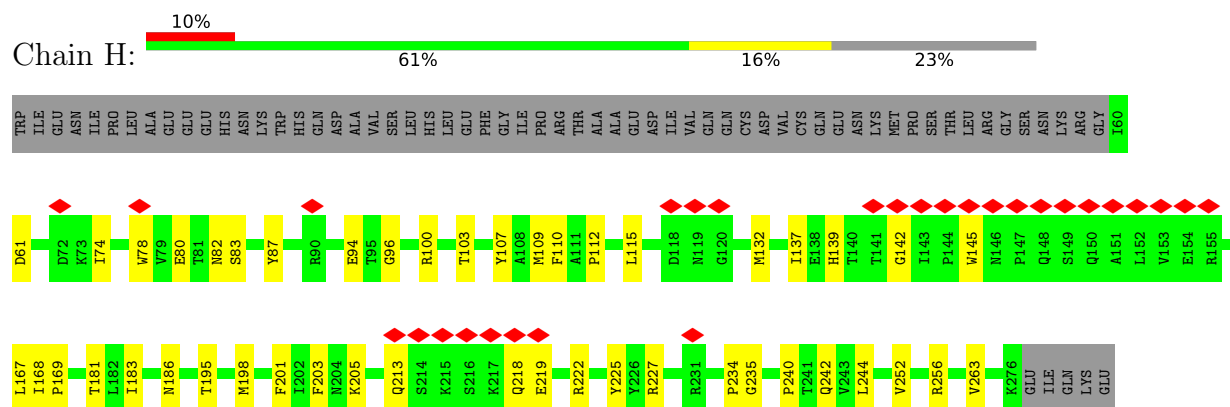
- Molecule 1: Pol polypeptide



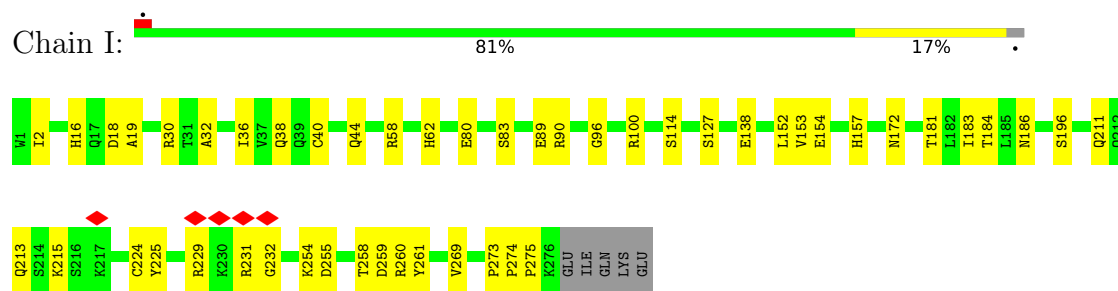
- Molecule 1: Pol polypeptide



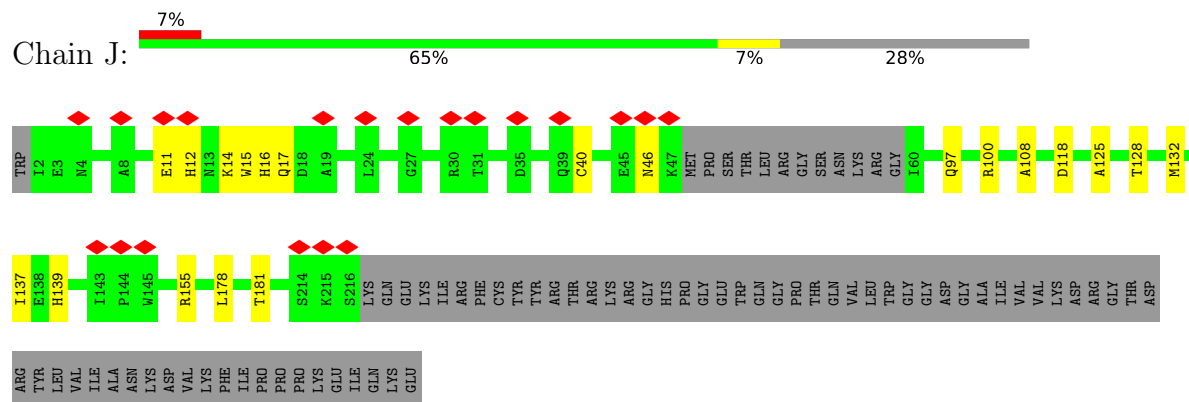
• Molecule 1: Pol polypeptide



• Molecule 1: Pol polypeptide

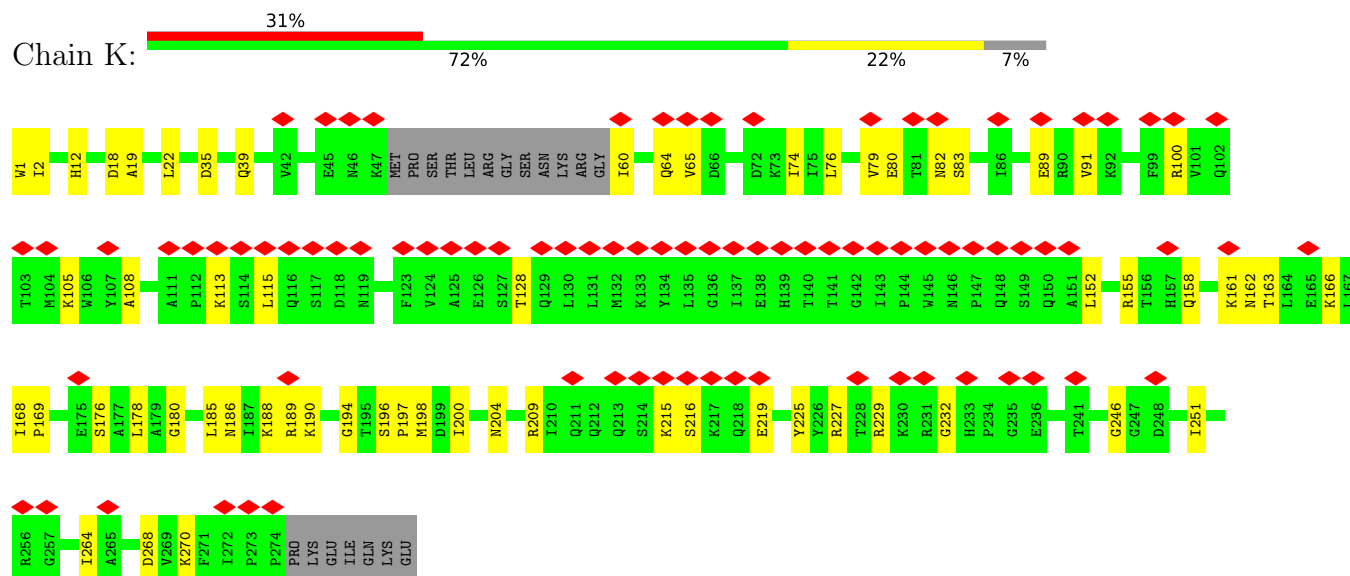


• Molecule 1: Pol polypeptide



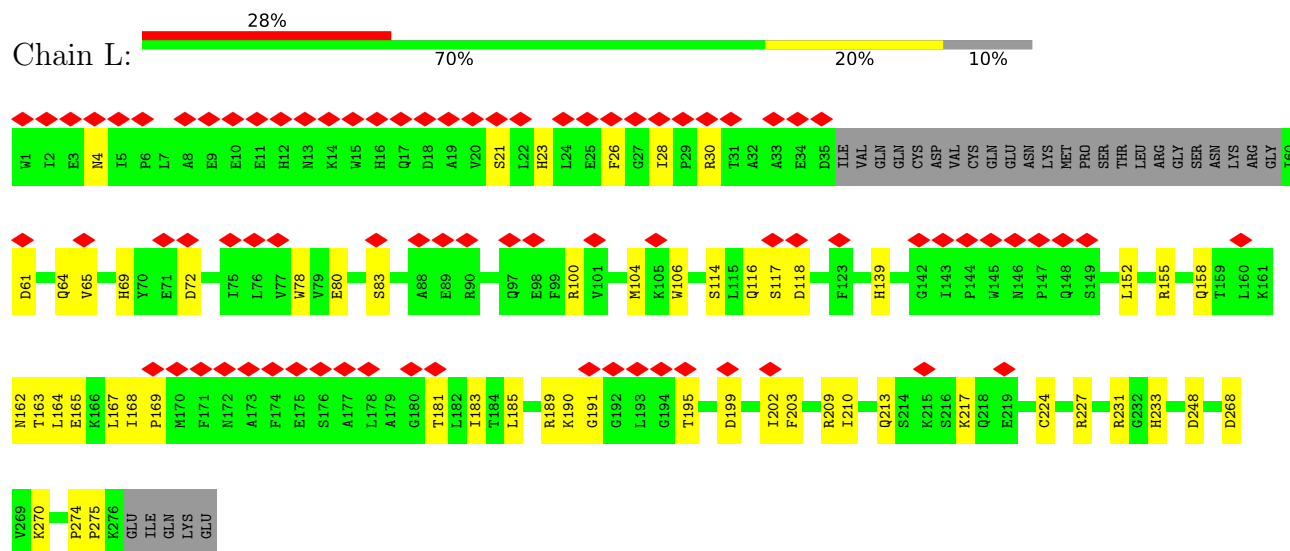
- Molecule 1: Pol polyprotein

Chain K:



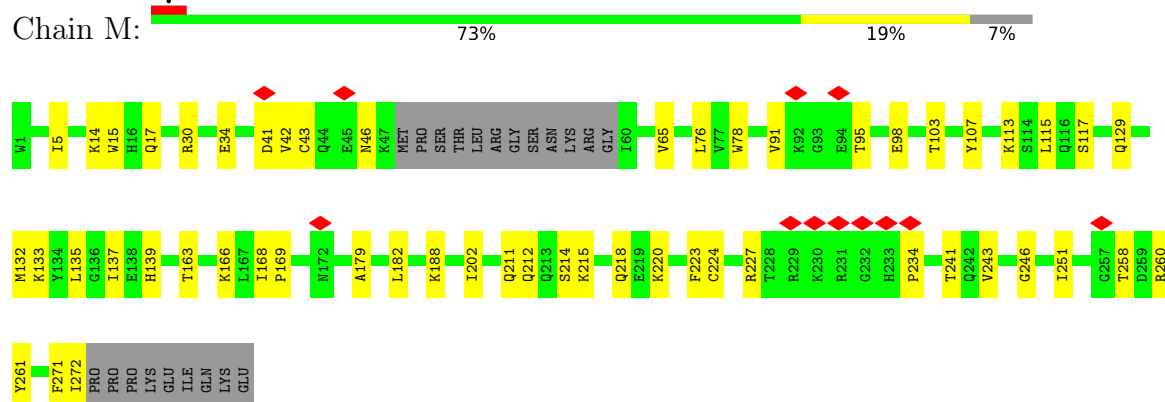
- Molecule 1: Pol polyprotein

Chain L:

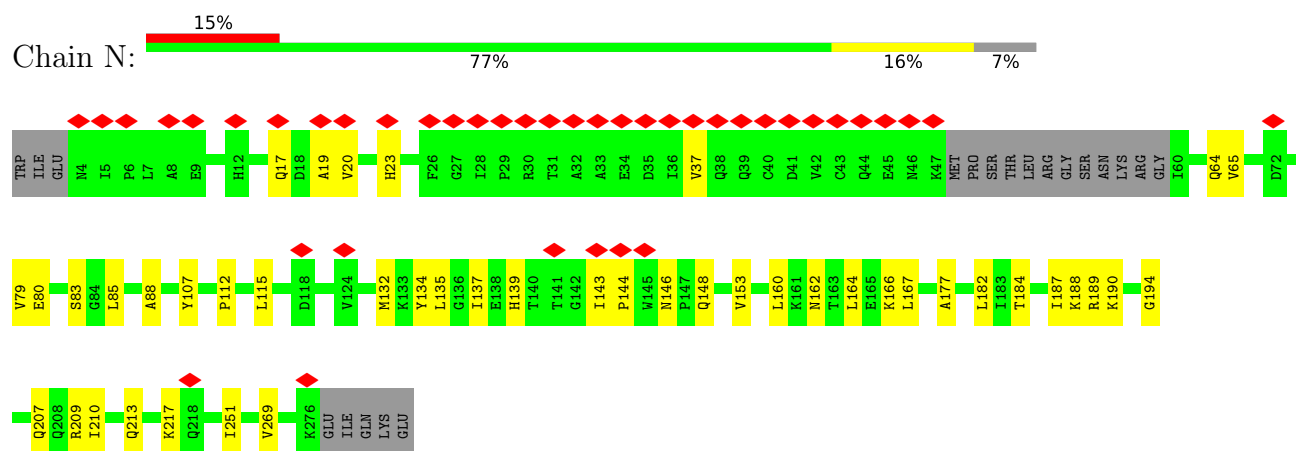


- Molecule 1: Pol polyprotein

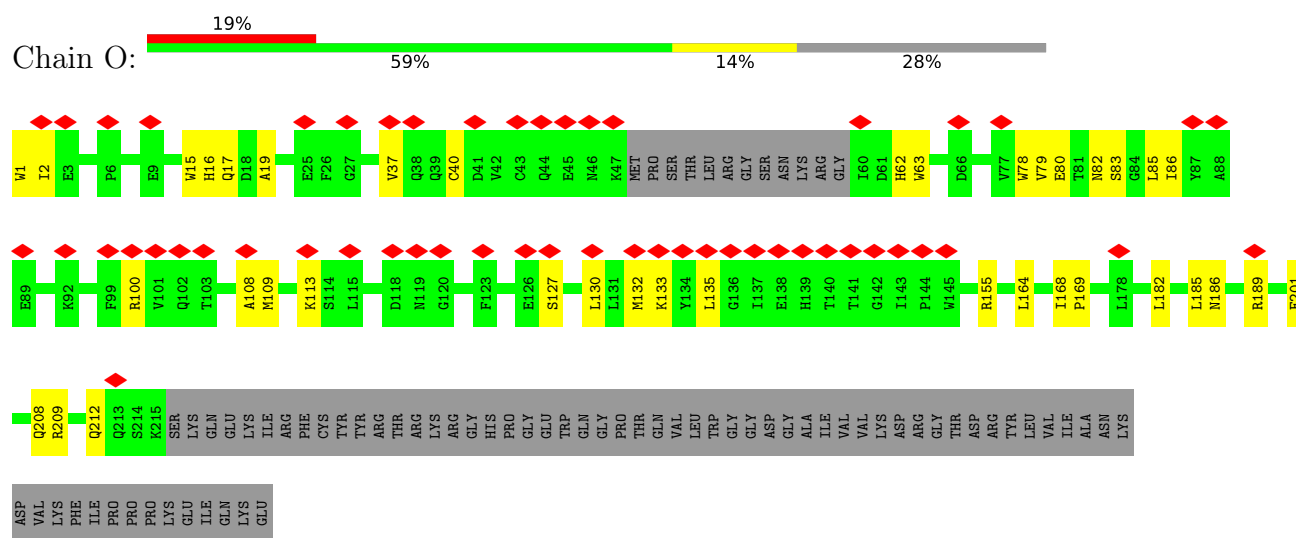
Chain M:



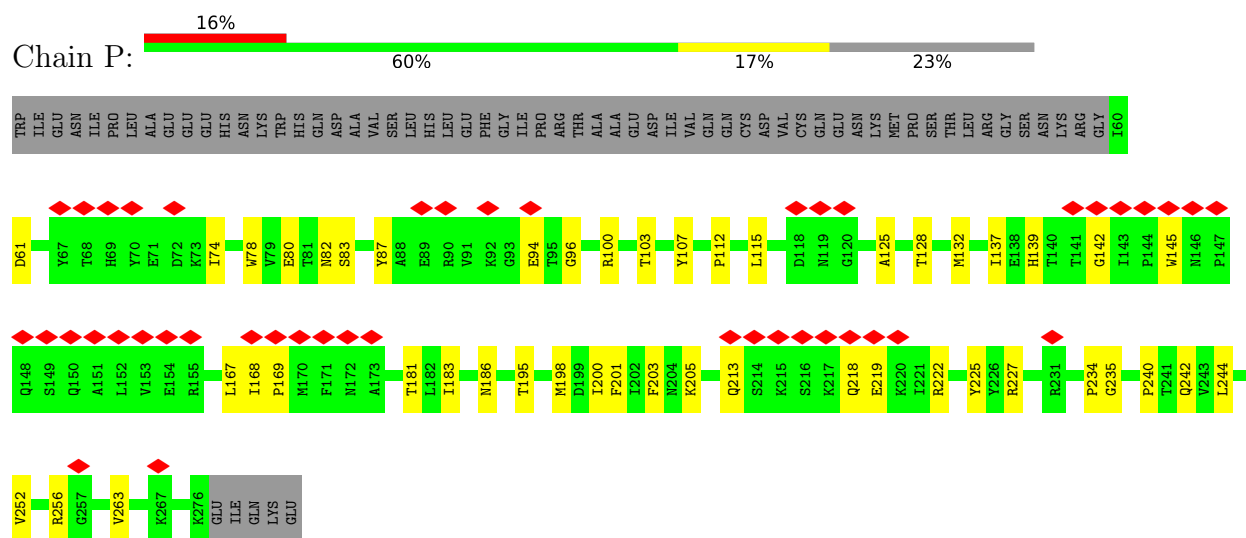
- Molecule 1: Pol polyprotein



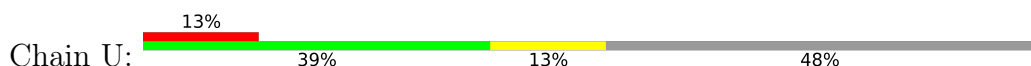
- Molecule 1: Pol polyprotein

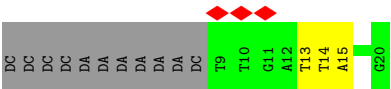


- Molecule 1: Pol polyprotein

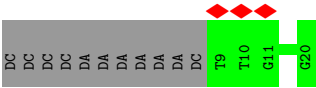


- Molecule 2: PC4 and SFRS1-interacting protein





● Molecule 5: DNA (5'-D(P\*TP\*TP\*GP\*AP\*TP\*TP\*AP\*GP\*GP\*GP\*TP\*G)-3')



## 4 Experimental information

Property	Value	Source
EM reconstruction method	SINGLE PARTICLE	Depositor
Imposed symmetry	POINT, C2	Depositor
Number of particles used	121619	Depositor
Resolution determination method	FSC 0.143 CUT-OFF	Depositor
CTF correction method	PHASE FLIPPING AND AMPLITUDE CORRECTION	Depositor
Microscope	FEI TITAN KRIOS	Depositor
Voltage (kV)	300	Depositor
Electron dose ( $e^-/\text{\AA}^2$ )	50	Depositor
Minimum defocus (nm)	1000	Depositor
Maximum defocus (nm)	4500	Depositor
Magnification	36232	Depositor
Image detector	GATAN K2 SUMMIT (4k x 4k)	Depositor
Maximum map value	2.122	Depositor
Minimum map value	-0.002	Depositor
Average map value	0.001	Depositor
Map value standard deviation	0.019	Depositor
Recommended contour level	0.02	Depositor
Map size (Å)	441.6, 441.6, 441.6	wwPDB
Map dimensions	320, 320, 320	wwPDB
Map angles (°)	90.0, 90.0, 90.0	wwPDB
Pixel spacing (Å)	1.38, 1.38, 1.38	Depositor

## 5 Model quality

### 5.1 Standard geometry

Bond lengths and bond angles in the following residue types are not validated in this section: ZN

The Z score for a bond length (or angle) is the number of standard deviations the observed value is removed from the expected value. A bond length (or angle) with  $|Z| > 5$  is considered an outlier worth inspection. RMSZ is the root-mean-square of all Z scores of the bond lengths (or angles).

Mol	Chain	Bond lengths		Bond angles	
		RMSZ	$\# Z  > 5$	RMSZ	$\# Z  > 5$
1	A	0.25	0/2290	0.47	0/3099
1	B	0.24	0/1675	0.45	0/2268
1	C	0.24	0/2182	0.46	0/2954
1	D	0.24	0/2104	0.48	0/2849
1	E	0.24	0/2166	0.47	0/2930
1	F	0.23	0/2166	0.46	0/2931
1	G	0.23	0/1685	0.43	0/2283
1	H	0.24	0/1805	0.48	0/2441
1	I	0.25	0/2290	0.47	0/3099
1	J	0.24	0/1675	0.45	0/2268
1	K	0.24	0/2182	0.46	0/2954
1	L	0.24	0/2104	0.48	0/2849
1	M	0.24	0/2166	0.47	0/2930
1	N	0.23	0/2166	0.46	0/2931
1	O	0.23	0/1685	0.43	0/2283
1	P	0.24	0/1805	0.48	0/2441
2	Q	0.23	0/672	0.47	0/895
2	R	0.24	0/679	0.45	0/905
3	X	0.49	0/479	0.84	0/738
3	Y	0.49	0/479	0.85	0/738
4	W	0.56	0/843	0.83	0/1296
4	Z	0.56	0/843	0.83	0/1296
5	U	0.46	0/282	0.94	0/435
5	a	0.47	0/282	0.95	0/435
All	All	0.28	0/36705	0.51	0/50248

There are no bond length outliers.

There are no bond angle outliers.

There are no chirality outliers.

There are no planarity outliers.

## 5.2 Too-close contacts ⓘ

In the following table, the Non-H and H(model) columns list the number of non-hydrogen atoms and hydrogen atoms in the chain respectively. The H(added) column lists the number of hydrogen atoms added and optimized by MolProbity. The Clashes column lists the number of clashes within the asymmetric unit, whereas Symm-Clashes lists symmetry-related clashes.

Mol	Chain	Non-H	H(model)	H(added)	Clashes	Symm-Clashes
1	A	2235	0	2216	36	0
1	B	1639	0	1605	18	0
1	C	2130	0	2100	42	0
1	D	2051	0	2030	39	0
1	E	2116	0	2086	36	0
1	F	2115	0	2090	25	0
1	G	1647	0	1613	26	0
1	H	1761	0	1764	32	0
1	I	2235	0	2216	37	0
1	J	1639	0	1605	17	0
1	K	2130	0	2100	41	0
1	L	2051	0	2030	44	0
1	M	2116	0	2086	34	0
1	N	2115	0	2090	27	0
1	O	1647	0	1613	26	0
1	P	1761	0	1764	32	0
2	Q	667	0	706	9	0
2	R	674	0	715	12	0
3	X	428	0	237	6	0
3	Y	428	0	237	7	0
4	W	752	0	413	7	0
4	Z	752	0	413	7	0
5	U	252	0	138	2	0
5	a	252	0	138	0	0
6	A	1	0	0	0	0
6	B	1	0	0	0	0
6	C	1	0	0	0	0
6	E	1	0	0	0	0
6	F	1	0	0	0	0
6	G	1	0	0	0	0
6	I	1	0	0	0	0
6	J	1	0	0	0	0
6	K	1	0	0	0	0
6	M	1	0	0	0	0
6	N	1	0	0	0	0
6	O	1	0	0	0	0
All	All	35605	0	34005	500	0

The all-atom clashscore is defined as the number of clashes found per 1000 atoms (including hydrogen atoms). The all-atom clashscore for this structure is 7.

The worst 5 of 500 close contacts within the same asymmetric unit are listed below, sorted by their clash magnitude.

Atom-1	Atom-2	Interatomic distance (Å)	Clash overlap (Å)
1:L:4:ASN:HD21	1:L:26:PHE:HB3	1.46	0.79
1:D:4:ASN:HD21	1:D:26:PHE:HB3	1.47	0.78
2:R:364:LYS:HD3	1:I:172:ASN:HB3	1.65	0.77
1:N:167:LEU:HB3	1:N:177:ALA:HB1	1.69	0.75
1:F:167:LEU:HB3	1:F:177:ALA:HB1	1.69	0.74

There are no symmetry-related clashes.

## 5.3 Torsion angles [i](#)

### 5.3.1 Protein backbone [i](#)

In the following table, the Percentiles column shows the percent Ramachandran outliers of the chain as a percentile score with respect to all PDB entries followed by that with respect to all EM entries.

The Analysed column shows the number of residues for which the backbone conformation was analysed, and the total number of residues.

Mol	Chain	Analysed	Favoured	Allowed	Outliers	Percentiles	
1	A	274/281 (98%)	266 (97%)	8 (3%)	0	100	100
1	B	199/281 (71%)	196 (98%)	3 (2%)	0	100	100
1	C	258/281 (92%)	255 (99%)	3 (1%)	0	100	100
1	D	248/281 (88%)	244 (98%)	4 (2%)	0	100	100
1	E	256/281 (91%)	251 (98%)	5 (2%)	0	100	100
1	F	257/281 (92%)	246 (96%)	11 (4%)	0	100	100
1	G	199/281 (71%)	194 (98%)	5 (2%)	0	100	100
1	H	215/281 (76%)	209 (97%)	6 (3%)	0	100	100
1	I	274/281 (98%)	266 (97%)	8 (3%)	0	100	100
1	J	199/281 (71%)	196 (98%)	3 (2%)	0	100	100
1	K	258/281 (92%)	255 (99%)	3 (1%)	0	100	100
1	L	248/281 (88%)	244 (98%)	4 (2%)	0	100	100

*Continued on next page...*

*Continued from previous page...*

Mol	Chain	Analysed	Favoured	Allowed	Outliers	Percentiles	
1	M	256/281 (91%)	251 (98%)	5 (2%)	0	100	100
1	N	257/281 (92%)	245 (95%)	12 (5%)	0	100	100
1	O	199/281 (71%)	194 (98%)	5 (2%)	0	100	100
1	P	215/281 (76%)	209 (97%)	6 (3%)	0	100	100
2	Q	79/95 (83%)	78 (99%)	1 (1%)	0	100	100
2	R	80/95 (84%)	78 (98%)	2 (2%)	0	100	100
All	All	3971/4686 (85%)	3877 (98%)	94 (2%)	0	100	100

There are no Ramachandran outliers to report.

### 5.3.2 Protein sidechains ⓘ

In the following table, the Percentiles column shows the percent sidechain outliers of the chain as a percentile score with respect to all PDB entries followed by that with respect to all EM entries.

The Analysed column shows the number of residues for which the sidechain conformation was analysed, and the total number of residues.

Mol	Chain	Analysed	Rotameric	Outliers	Percentiles	
1	A	241/246 (98%)	241 (100%)	0	100	100
1	B	179/246 (73%)	179 (100%)	0	100	100
1	C	229/246 (93%)	228 (100%)	1 (0%)	91	96
1	D	219/246 (89%)	219 (100%)	0	100	100
1	E	227/246 (92%)	226 (100%)	1 (0%)	91	96
1	F	228/246 (93%)	228 (100%)	0	100	100
1	G	179/246 (73%)	177 (99%)	2 (1%)	73	88
1	H	189/246 (77%)	189 (100%)	0	100	100
1	I	241/246 (98%)	241 (100%)	0	100	100
1	J	179/246 (73%)	179 (100%)	0	100	100
1	K	229/246 (93%)	228 (100%)	1 (0%)	91	96
1	L	219/246 (89%)	219 (100%)	0	100	100
1	M	227/246 (92%)	226 (100%)	1 (0%)	91	96
1	N	228/246 (93%)	228 (100%)	0	100	100
1	O	179/246 (73%)	177 (99%)	2 (1%)	73	88

*Continued on next page...*

*Continued from previous page...*

Mol	Chain	Analysed	Rotameric	Outliers	Percentiles	
1	P	189/246 (77%)	189 (100%)	0	100	100
2	Q	77/89 (86%)	77 (100%)	0	100	100
2	R	78/89 (88%)	78 (100%)	0	100	100
All	All	3537/4114 (86%)	3529 (100%)	8 (0%)	93	98

5 of 8 residues with a non-rotameric sidechain are listed below:

Mol	Chain	Res	Type
1	O	155	ARG
1	O	113	LYS
1	K	215	LYS
1	G	155	ARG
1	M	113	LYS

Sometimes sidechains can be flipped to improve hydrogen bonding and reduce clashes. 5 of 12 such sidechains are listed below:

Mol	Chain	Res	Type
1	L	4	ASN
1	L	139	HIS
1	P	242	GLN
1	L	213	GLN
1	D	213	GLN

### 5.3.3 RNA ⓘ

There are no RNA molecules in this entry.

## 5.4 Non-standard residues in protein, DNA, RNA chains ⓘ

There are no non-standard protein/DNA/RNA residues in this entry.

## 5.5 Carbohydrates ⓘ

There are no monosaccharides in this entry.

## 5.6 Ligand geometry

Of 12 ligands modelled in this entry, 12 are monoatomic - leaving 0 for Mogul analysis.

There are no bond length outliers.

There are no bond angle outliers.

There are no chirality outliers.

There are no torsion outliers.

There are no ring outliers.

No monomer is involved in short contacts.

## 5.7 Other polymers

There are no such residues in this entry.

## 5.8 Polymer linkage issues

There are no chain breaks in this entry.

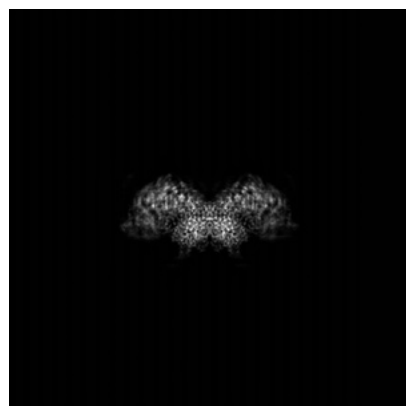
## 6 Map visualisation [i](#)

This section contains visualisations of the EMDB entry EMD-14453. These allow visual inspection of the internal detail of the map and identification of artifacts.

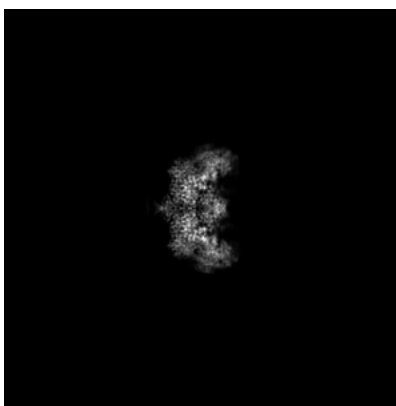
Images derived from a raw map, generated by summing the deposited half-maps, are presented below the corresponding image components of the primary map to allow further visual inspection and comparison with those of the primary map.

### 6.1 Orthogonal projections [i](#)

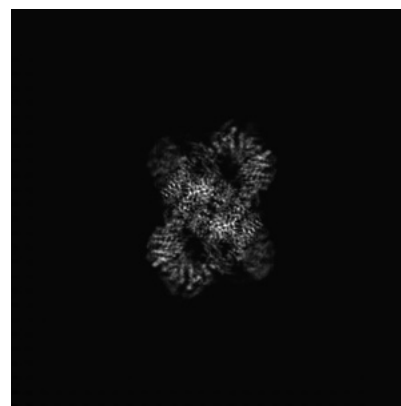
#### 6.1.1 Primary map



X

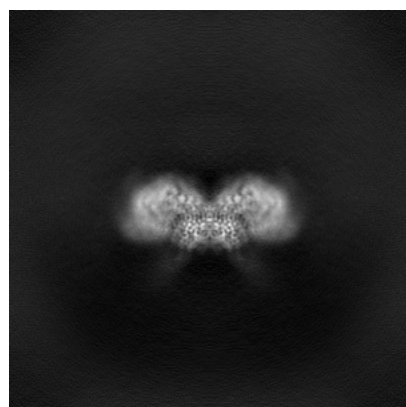


Y

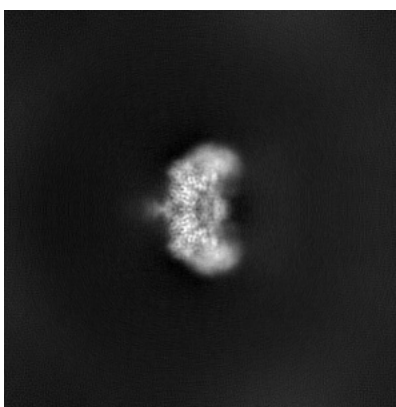


Z

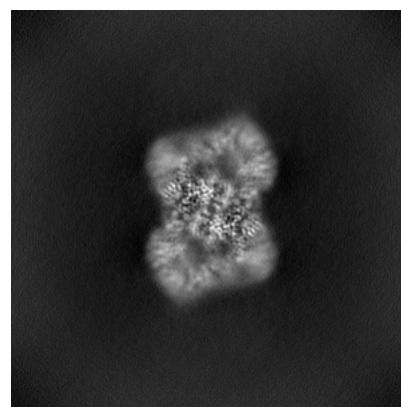
#### 6.1.2 Raw map



X



Y

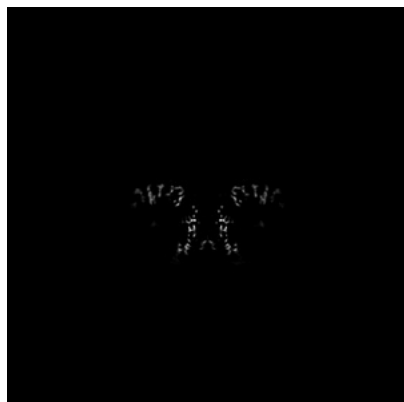


Z

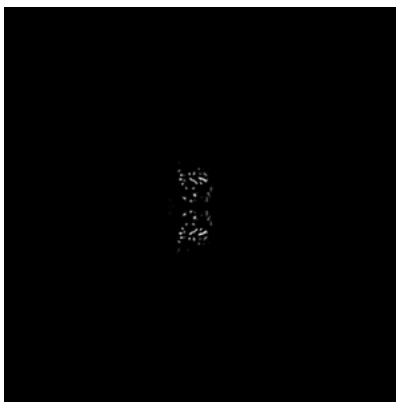
The images above show the map projected in three orthogonal directions.

## 6.2 Central slices [i](#)

### 6.2.1 Primary map



X Index: 160

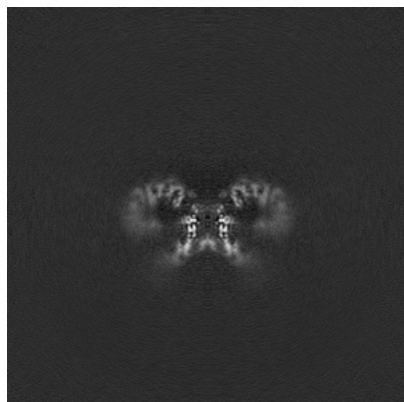


Y Index: 160

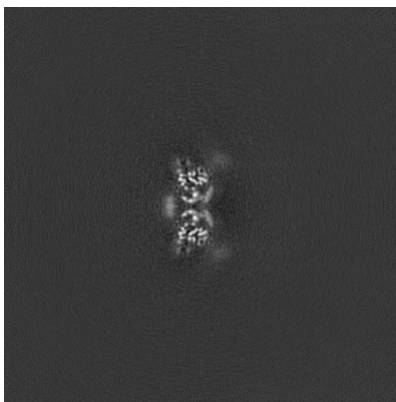


Z Index: 160

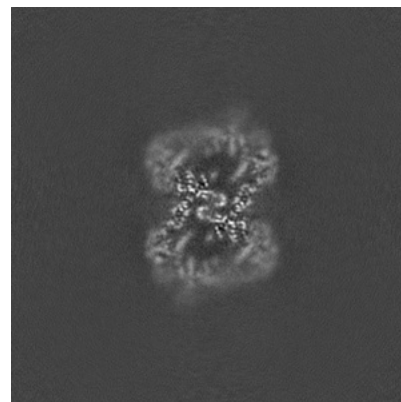
### 6.2.2 Raw map



X Index: 160



Y Index: 160



Z Index: 160

The images above show central slices of the map in three orthogonal directions.

## 6.3 Largest variance slices [i](#)

### 6.3.1 Primary map



X Index: 136

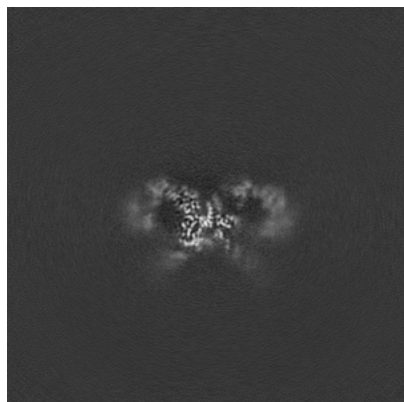


Y Index: 144



Z Index: 148

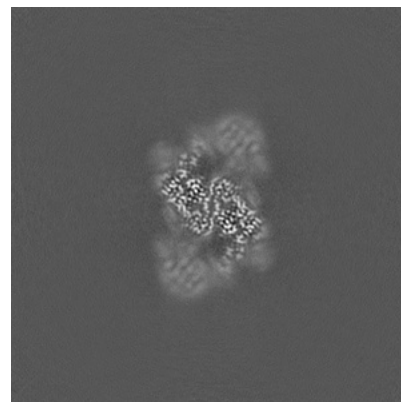
### 6.3.2 Raw map



X Index: 165



Y Index: 176

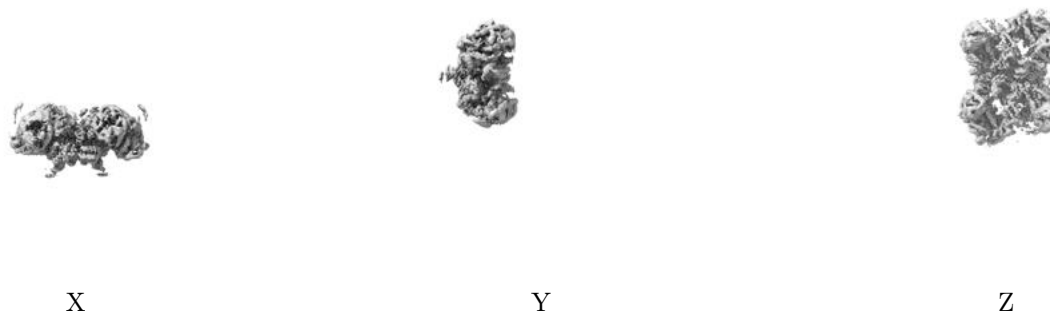


Z Index: 148

The images above show the largest variance slices of the map in three orthogonal directions.

## 6.4 Orthogonal surface views [i](#)

### 6.4.1 Primary map



The images above show the 3D surface view of the map at the recommended contour level 0.02. These images, in conjunction with the slice images, may facilitate assessment of whether an appropriate contour level has been provided.

### 6.4.2 Raw map



These images show the 3D surface of the raw map. The raw map's contour level was selected so that its surface encloses the same volume as the primary map does at its recommended contour level.

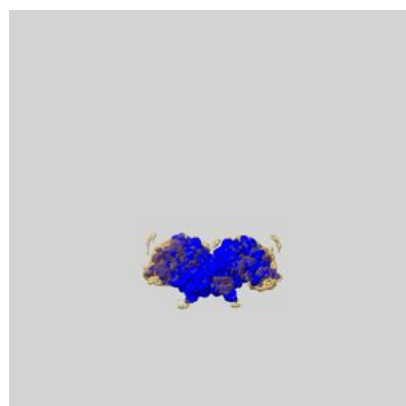
## 6.5 Mask visualisation [i](#)

This section shows the 3D surface view of the primary map at 50% transparency overlaid with the specified mask at 0% transparency

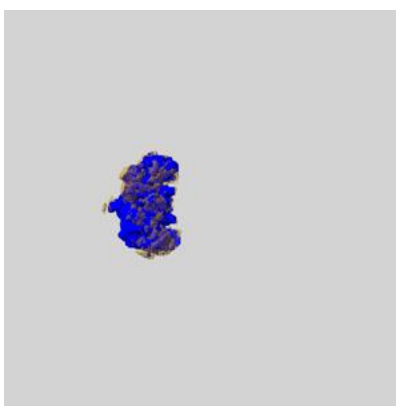
A mask typically either:

- Encompasses the whole structure
- Separates out a domain, a functional unit, a monomer or an area of interest from a larger structure

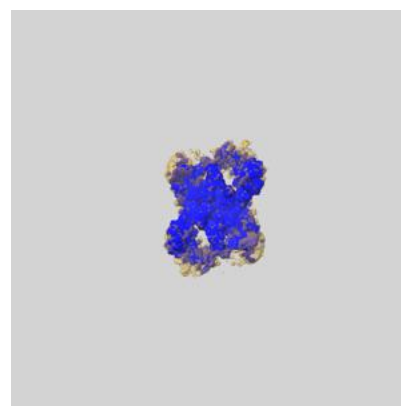
### 6.5.1 emd\_14453\_msk\_1.map [i](#)



X



Y

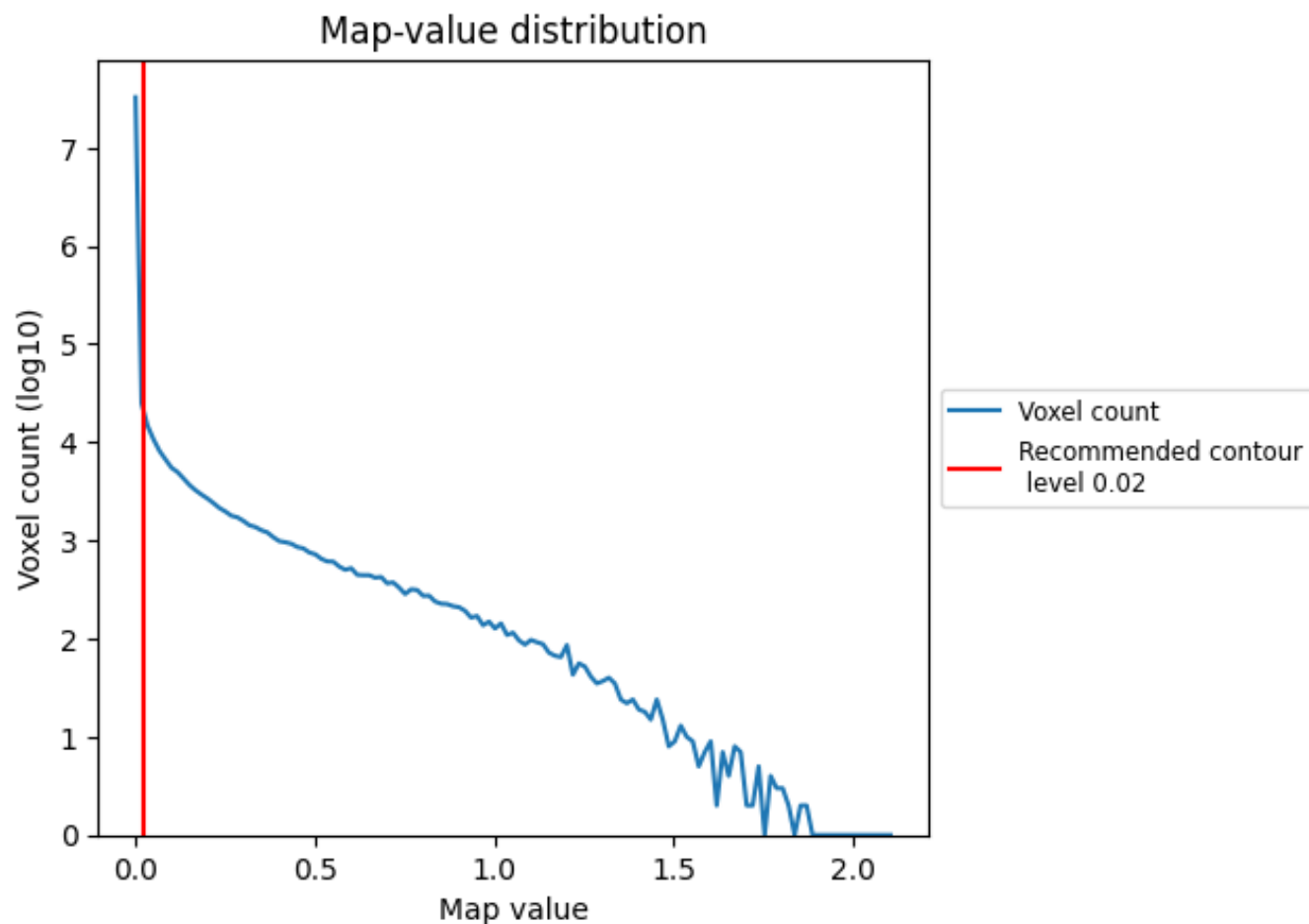


Z

## 7 Map analysis [i](#)

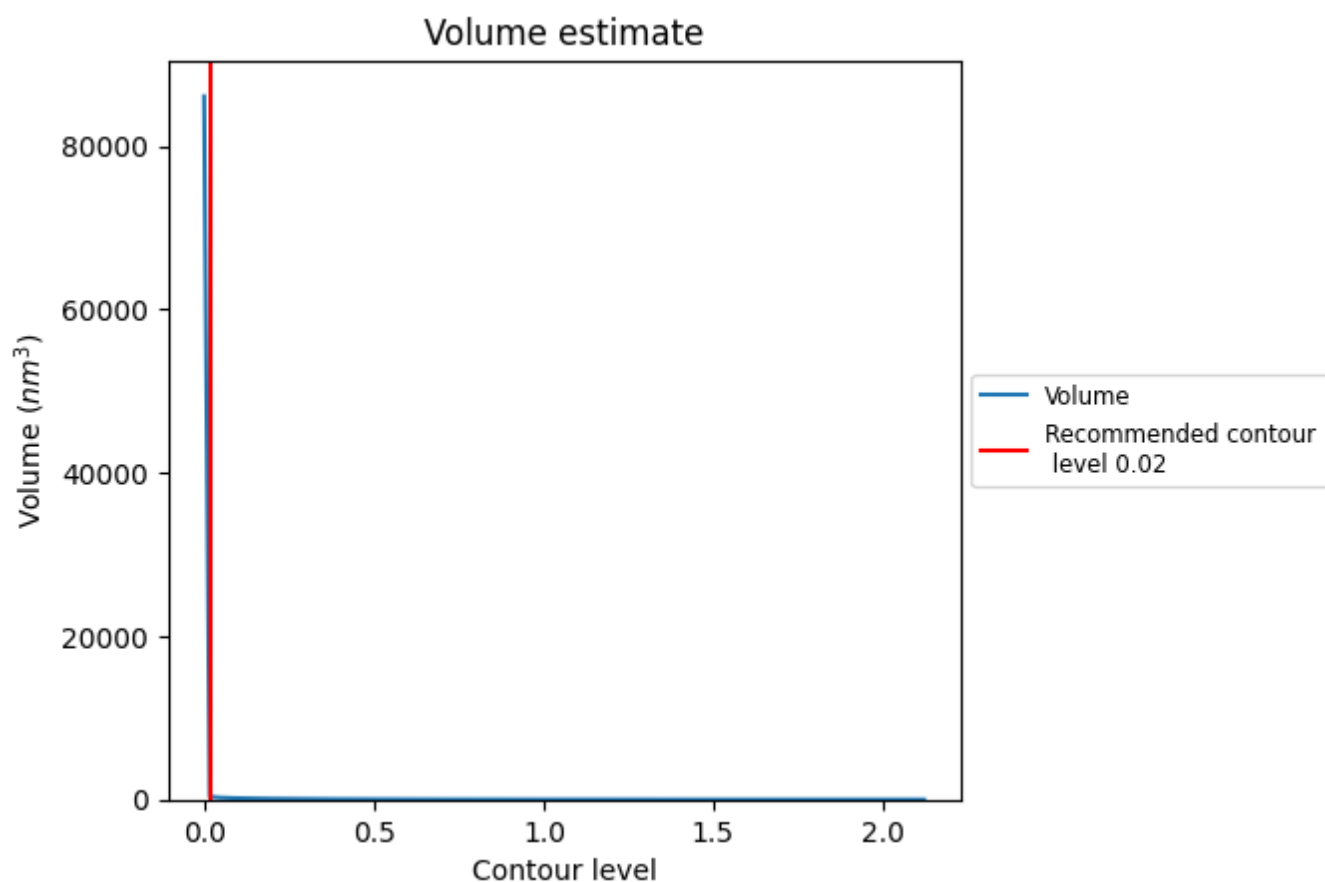
This section contains the results of statistical analysis of the map.

### 7.1 Map-value distribution [i](#)



The map-value distribution is plotted in 128 intervals along the x-axis. The y-axis is logarithmic. A spike in this graph at zero usually indicates that the volume has been masked.

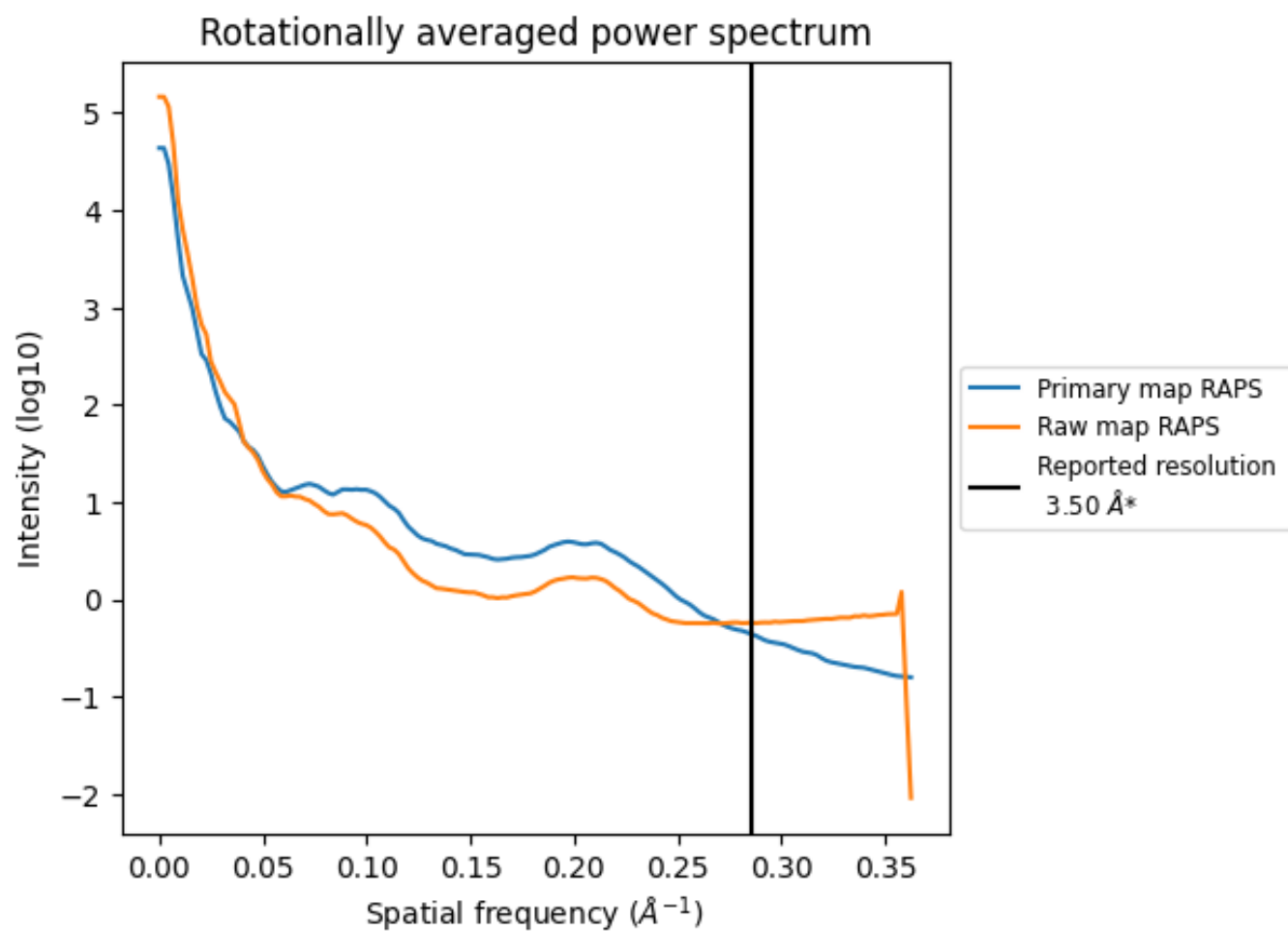
## 7.2 Volume estimate [i](#)



The volume at the recommended contour level is 318 nm<sup>3</sup>; this corresponds to an approximate mass of 287 kDa.

The volume estimate graph shows how the enclosed volume varies with the contour level. The recommended contour level is shown as a vertical line and the intersection between the line and the curve gives the volume of the enclosed surface at the given level.

### 7.3 Rotationally averaged power spectrum ⓘ

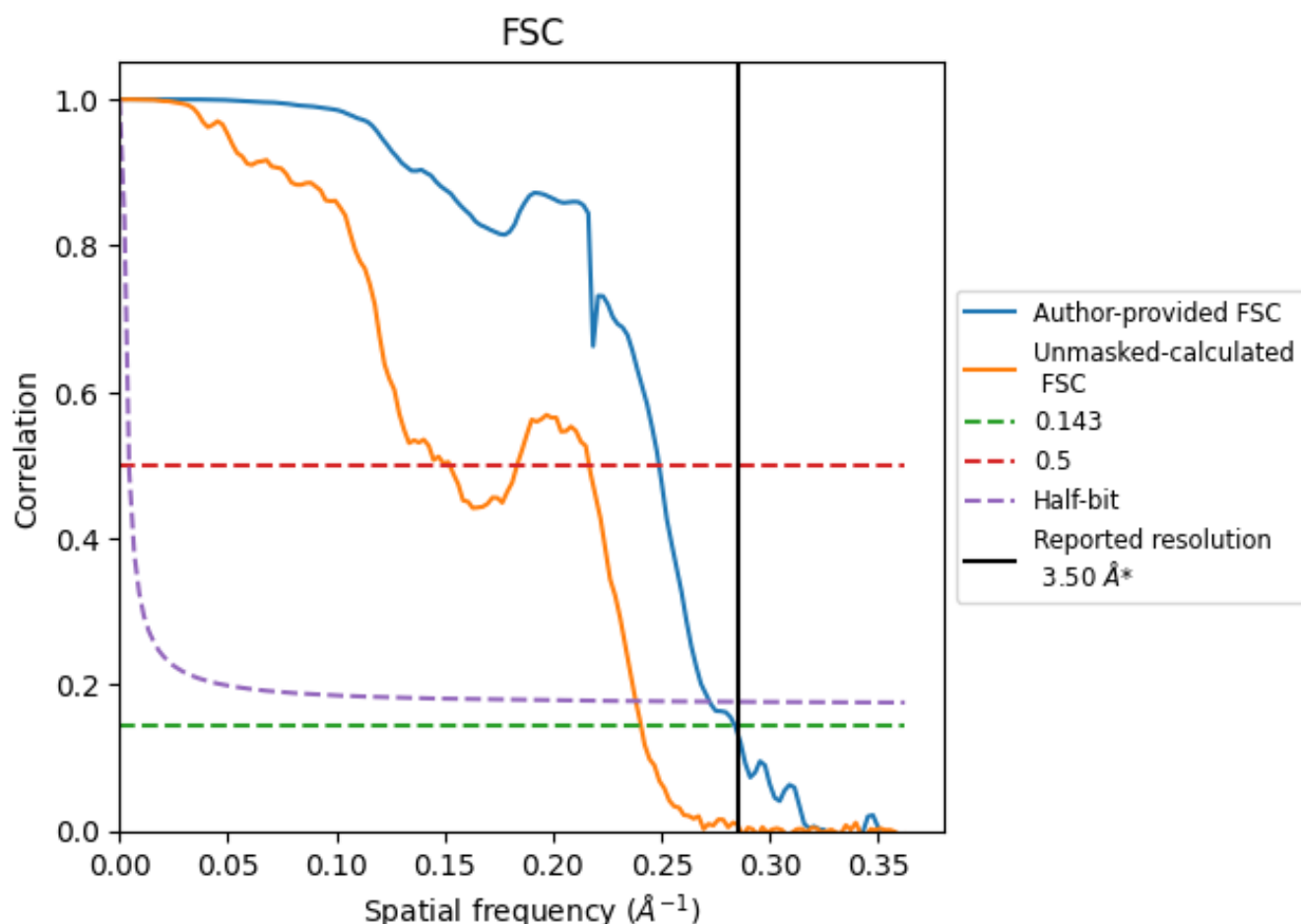


\*Reported resolution corresponds to spatial frequency of 0.286 Å<sup>-1</sup>

## 8 Fourier-Shell correlation [i](#)

Fourier-Shell Correlation (FSC) is the most commonly used method to estimate the resolution of single-particle and subtomogram-averaged maps. The shape of the curve depends on the imposed symmetry, mask and whether or not the two 3D reconstructions used were processed from a common reference. The reported resolution is shown as a black line. A curve is displayed for the half-bit criterion in addition to lines showing the 0.143 gold standard cut-off and 0.5 cut-off.

### 8.1 FSC [i](#)



\*Reported resolution corresponds to spatial frequency of 0.286  $\text{\AA}^{-1}$

## 8.2 Resolution estimates [i](#)

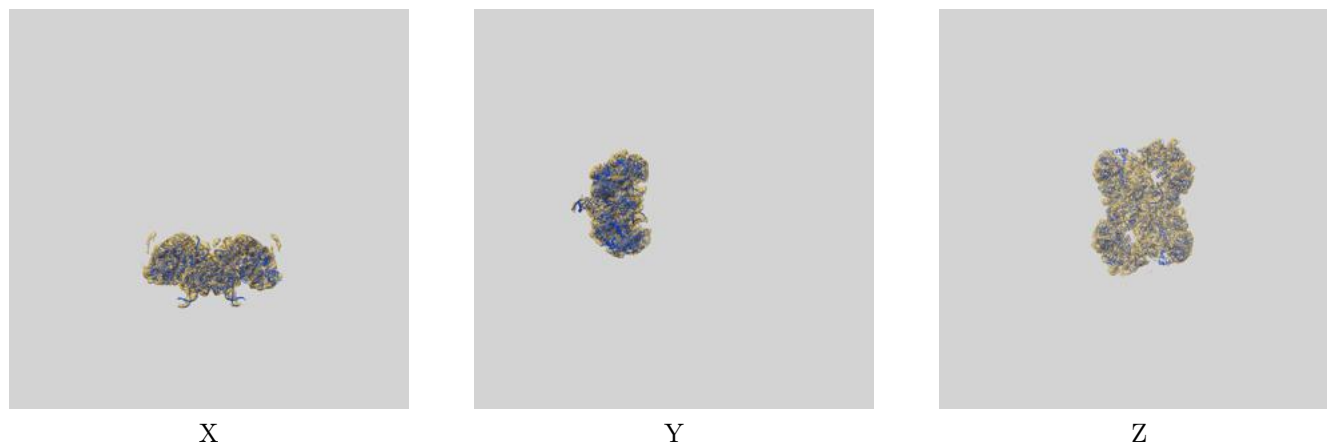
Resolution estimate (Å)	Estimation criterion (FSC cut-off)		
	0.143	0.5	Half-bit
Reported by author	3.50	-	-
Author-provided FSC curve	3.52	4.02	3.67
Unmasked-calculated*	4.16	6.57	4.20

\*Resolution estimate based on FSC curve calculated by comparison of deposited half-maps. The value from deposited half-maps intersecting FSC 0.143 CUT-OFF 4.16 differs from the reported value 3.5 by more than 10 %

## 9 Map-model fit [i](#)

This section contains information regarding the fit between EMDB map EMD-14453 and PDB model 7Z1Z. Per-residue inclusion information can be found in section [3](#) on page [7](#).

### 9.1 Map-model overlay [i](#)



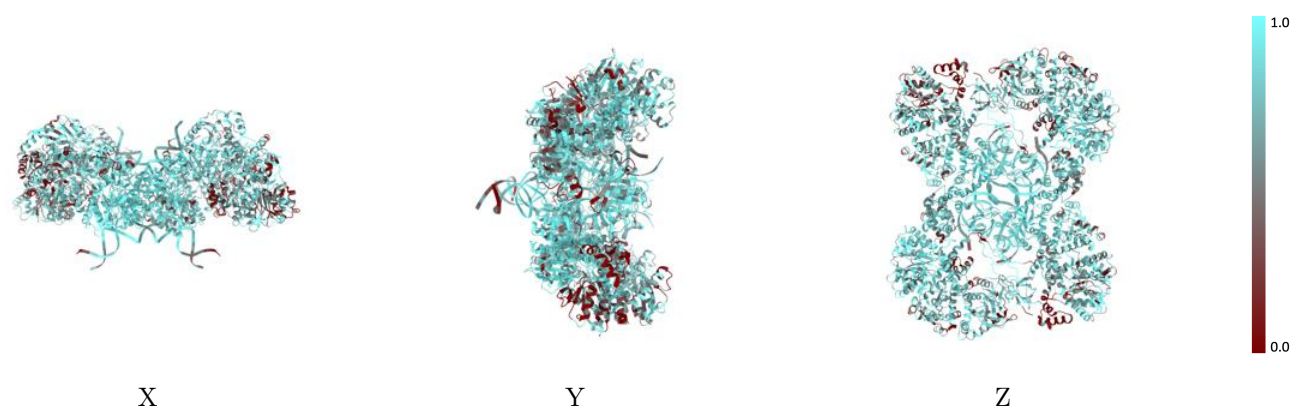
The images above show the 3D surface view of the map at the recommended contour level 0.02 at 50% transparency in yellow overlaid with a ribbon representation of the model coloured in blue. These images allow for the visual assessment of the quality of fit between the atomic model and the map.

## 9.2 Q-score mapped to coordinate model [i](#)



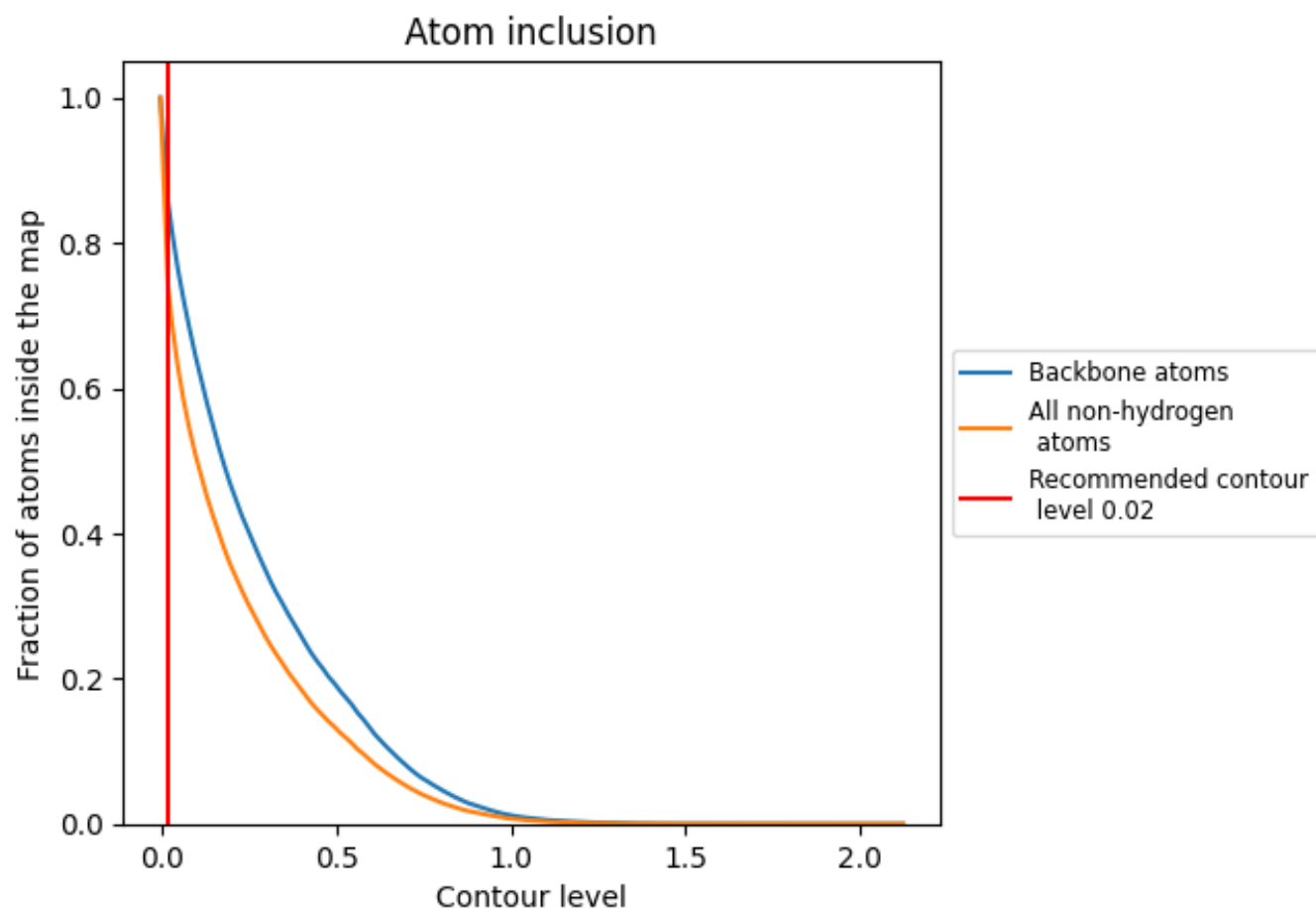
The images above show the model with each residue coloured according to its Q-score. This shows their resolvability in the map with higher Q-score values reflecting better resolvability. Please note: Q-score is calculating the resolvability of atoms, and thus high values are only expected at resolutions at which atoms can be resolved. Low Q-score values may therefore be expected for many entries.

## 9.3 Atom inclusion mapped to coordinate model [i](#)



The images above show the model with each residue coloured according to its atom inclusion. This shows to what extent they are inside the map at the recommended contour level (0.02).



















































## 9.4 Atom inclusion ⓘ



At the recommended contour level, 86% of all backbone atoms, 74% of all non-hydrogen atoms, are inside the map.

## 9.5 Map-model fit summary

The table lists the average atom inclusion at the recommended contour level (0.02) and Q-score for the entire model and for each chain.

Chain	Atom inclusion	Q-score
All	 0.7409	 0.1900
A	 0.9297	 0.4050
B	 0.8393	 0.3320
C	 0.6471	 0.1180
D	 0.6643	 0.1360
E	 0.8305	 0.1770
F	 0.7742	 0.2060
G	 0.6942	 0.0620
H	 0.6939	 0.0960
I	 0.9329	 0.3850
J	 0.8226	 0.2920
K	 0.5815	 0.0820
L	 0.5853	 0.1040
M	 0.7939	 0.1660
N	 0.7362	 0.1950
O	 0.6197	 0.0580
P	 0.6267	 0.0710
Q	 0.6113	 0.1490
R	 0.6561	 0.1420
U	 0.7024	 0.2800
W	 0.8564	 0.2770
X	 0.8481	 0.3150
Y	 0.8364	 0.3150
Z	 0.8364	 0.2600
a	 0.6270	 0.2310

