



wwPDB EM Validation Summary Report ⓘ

Dec 12, 2022 – 09:12 pm GMT

EMDB ID : EMD-15991
Title : cryo-tomogram of a Ca.L. ossiferum cell
Authors : Rodrigues-Oliveira, T.; Wollweber, F.; Ponce-Toledo, R.; Xu, J.; Rittmann, S.; Klingl, A.; Pilhofer, M.; Schleper, C.
Deposited on : 2022-10-20
Resolution : Not provided

This is a wwPDB EM Validation Summary Report for a publicly released PDB entry.

We welcome your comments at validation@mail.wwpdb.org

A user guide is available at

<https://www.wwpdb.org/validation/2017/EMTomogramValidationReportHelp>

with specific help available everywhere you see the ⓘ symbol.

The types of validation reports are described at

<http://www.wwpdb.org/validation/2017/FAQs#types>.

The following versions of software and data (see [references ⓘ](#)) were used in the production of this report:

EMDB validation analysis : 0.0.1.dev43
Validation Pipeline (wwPDB-VP) : 2.31.3

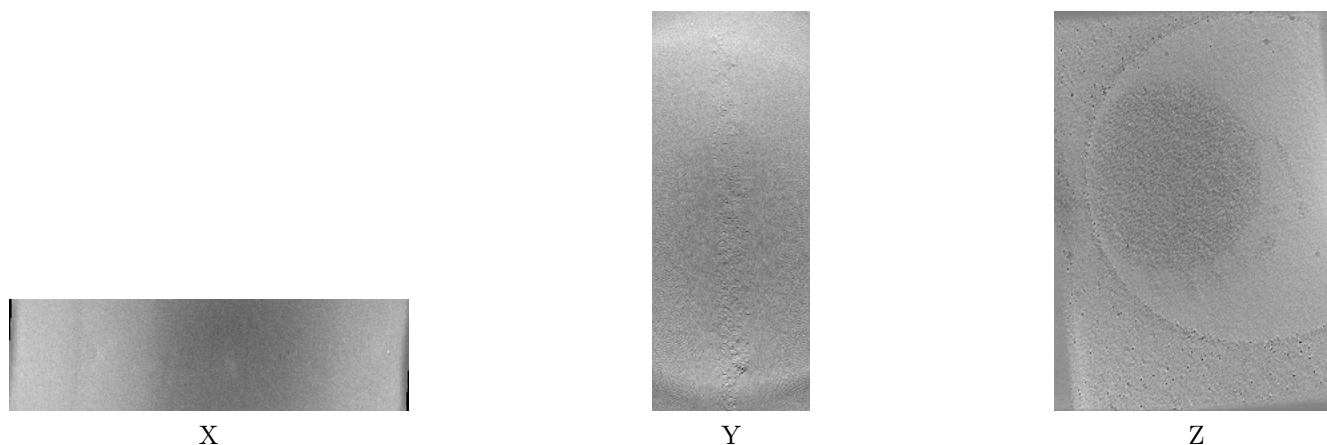
1 Experimental information ⓘ

| Property | Value | Source |
|--------------------------------------|--------------------------------|-----------|
| EM reconstruction method | TOMOGRAPHY | Depositor |
| Imposed symmetry | Not Provided | |
| Number of tilted images used | 61 | Depositor |
| Resolution determination method | Not provided | |
| CTF correction method | Not provided | |
| Microscope | FEI TITAN KRIOS | Depositor |
| Voltage (kV) | 300 | Depositor |
| Electron dose ($e^-/\text{\AA}^2$) | 2.6 | Depositor |
| Minimum defocus (nm) | 8.0 | Depositor |
| Maximum defocus (nm) | 8.0 | Depositor |
| Magnification | Not provided | |
| Image detector | GATAN K3 (6k x 4k) | Depositor |
| Maximum voxel value | 51.000 | Depositor |
| Minimum voxel value | -75.000 | Depositor |
| Average voxel value | 0.226 | Depositor |
| Voxel value standard deviation | 1.085 | Depositor |
| Recommended contour level | Not applicable | |
| Tomogram size (Å) | 18472.96, 25977.602, 7216.0005 | wwPDB |
| Tomogram dimensions | 1024, 1440, 400 | wwPDB |
| Tomogram angles (°) | 90.0, 90.0, 90.0 | wwPDB |
| Grid spacing (Å) | 18.04, 18.04, 18.04 | Depositor |

2 Tomogram visualisation [i](#)

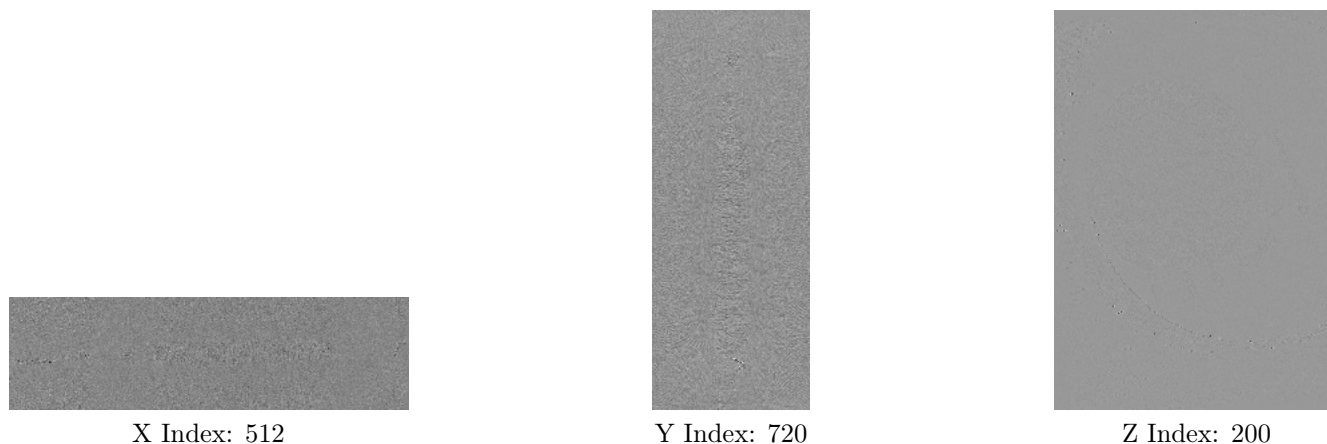
This section contains visualisations of the EMDB entry EMD-15991. These allow visual inspection of the internal detail of the tomogram and identification of artifacts.

2.1 Orthogonal projections [i](#)



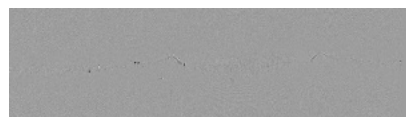
The images above show the tomogram projected in three orthogonal directions.

2.2 Central slices [i](#)

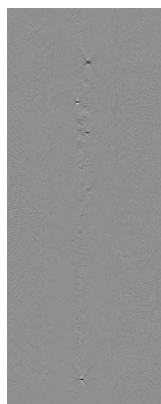


The images above show central slices of the tomogram in three orthogonal directions.

2.3 Largest variance slices [i](#)



X Index: 160



Y Index: 246



Z Index: 183

The images above show the largest variance slices of the tomogram in three orthogonal directions.

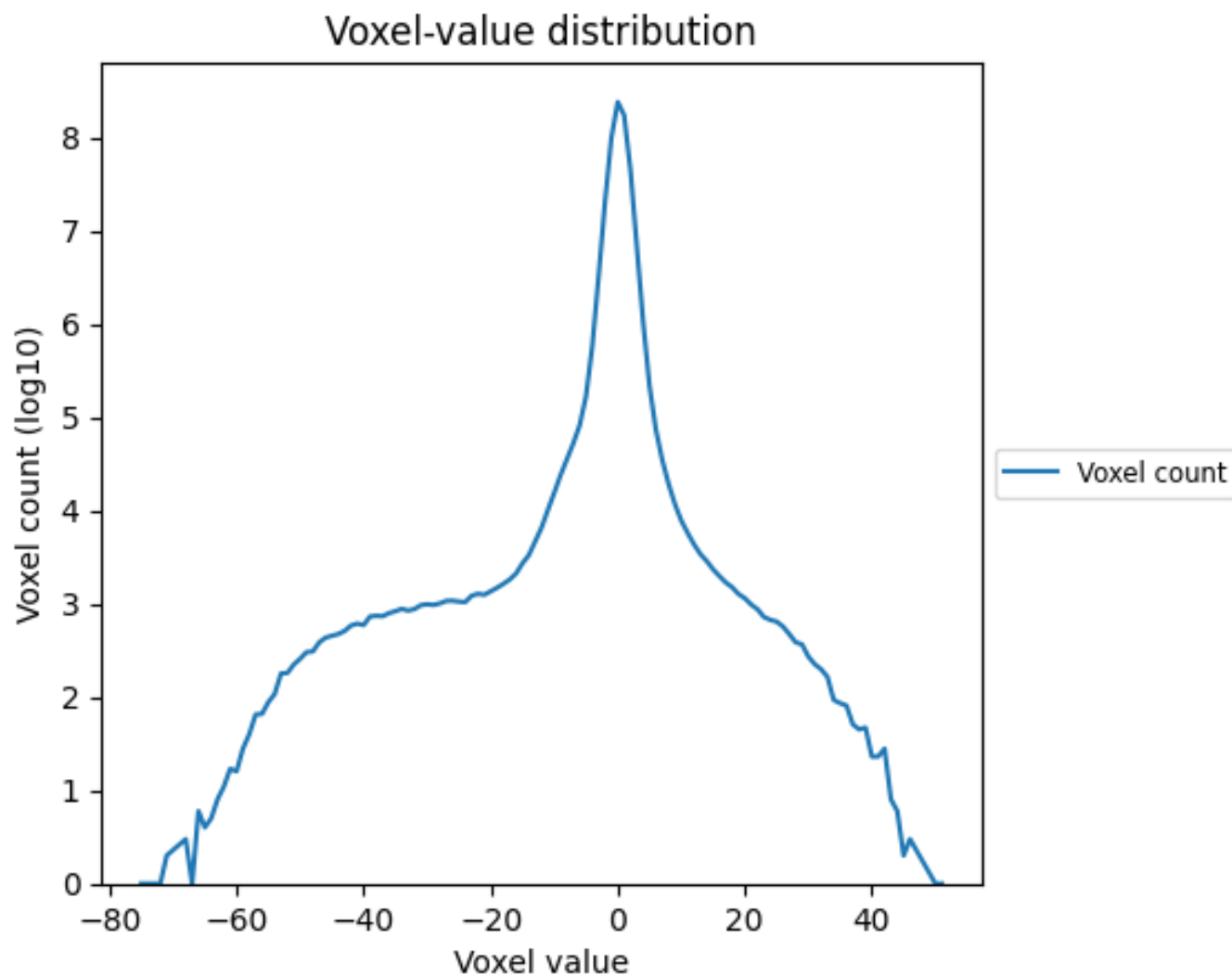
2.4 Mask visualisation [i](#)

This section was not generated. No masks/segmentation were deposited.

3 Tomogram analysis [i](#)

This section contains the results of statistical analysis of the tomogram.

3.1 Voxel-value distribution [i](#)



The voxel-value distribution is plotted in 128 intervals along the x-axis. The y-axis is logarithmic.