



## wwPDB EM Validation Summary Report ⓘ

Apr 14, 2021 – 12:19 PM EDT

EMDB ID : EMD-22908

Title : SARS-CoV-2 Spike bound to Nb6 in open conformation

Authors : Schoof, M.S.; Faust, B.F.; Saunders, R.A.; Sangwan, S.; Rezelj, V.; Hoppe, N.; Boone, M.; Billesboelle, C.B.; Puchades, C.; Azumaya, C.M.; Kratochvil, H.T.; Zimanyi, M.; Desphande, I.; Liang, J.; Dickinson, S.; Nguyen, H.C.; Chio, C.M.; Merz, G.E.; Thompson, M.C.; Diwanji, D.; Schaefer, K.; Anand, A.A.; Dobzinski, N.; Zha, B.S.; Simoneau, C.R.; Leon, K.; White, K.M.; Chio, U.S.; Gupta, M.; Jin, M.; Li, F.; Liu, Y.; Zhang, K.; Bulkley, D.; Sun, M.; Smith, A.M.; Rizo, A.N.; Moss, F.; Brilot, A.F.; Pourmal, S.; Trenker, R.; Pospiech, T.; Gupta, S.; Barsi-Rhyne, B.; Belyy, V.; Barile-Hill, A.W.; Nock, S.; Liu, Y.; Krogan, N.J.; Ralston, C.Y.; Swaney, D.L.; Garcia-Sastre, A.; Ott, M.; Vignuzzi, M.; Walter, P.; Manglik, A.; QCRG Structural Biology, C.o.n.s.o.r.t.i.u.m.

Deposited on : 2020-10-27

Resolution : 3.80 Å(reported)

This is a wwPDB EM Validation Summary Report for a publicly released PDB entry.

We welcome your comments at [validation@mail.wwpdb.org](mailto:validation@mail.wwpdb.org)

A user guide is available at

<https://www.wwpdb.org/validation/2017/EMMapValidationReportHelp>

with specific help available everywhere you see the ⓘ symbol.

---

The following versions of software and data (see [references ⓘ](#)) were used in the production of this report:

EMDB validation analysis : 0.0.0.dev75

Validation Pipeline (wwPDB-VP) : 2.18

# 1 Experimental information

Property	Value	Source
EM reconstruction method	SINGLE PARTICLE	Depositor
Imposed symmetry	POINT, C1	Depositor
Number of particles used	40125	Depositor
Resolution determination method	FSC 0.143 CUT-OFF	Depositor
CTF correction method	Performed at reconstruction, as is standard for cryoSPARC	Depositor
Microscope	FEI TITAN KRIOS	Depositor
Voltage (kV)	300	Depositor
Electron dose ( $e^-/\text{\AA}^2$ )	66.0	Depositor
Minimum defocus (nm)	Not provided	
Maximum defocus (nm)	Not provided	
Magnification	105000.0	Depositor
Image detector	GATAN K3 BIOQUANTUM (6k x 4k)	Depositor
Maximum map value	10.066	Depositor
Minimum map value	-4.813	Depositor
Average map value	0.004	Depositor
Map value standard deviation	0.335	Depositor
Recommended contour level	1.8	Depositor
Map size ( $\text{\AA}$ )	427.008, 427.008, 427.008	wwPDB
Map dimensions	512, 512, 512	wwPDB
Map angles ( $^\circ$ )	90.0, 90.0, 90.0	wwPDB
Pixel spacing ( $\text{\AA}$ )	0.834, 0.834, 0.834	Depositor

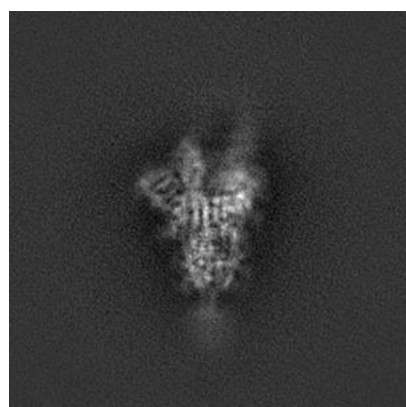
## 2 Map visualisation [i](#)

This section contains visualisations of the EMDB entry EMD-22908. These allow visual inspection of the internal detail of the map and identification of artifacts.

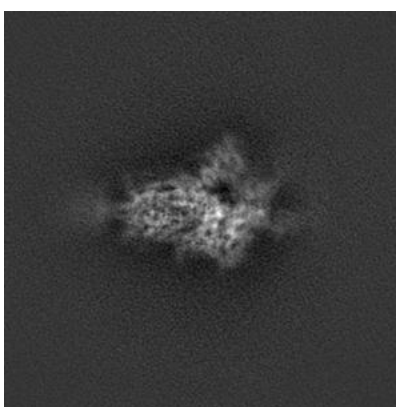
No raw map or half-maps were deposited for this entry and therefore no images, graphs, etc. pertaining to the raw map can be shown.

### 2.1 Orthogonal projections [i](#)

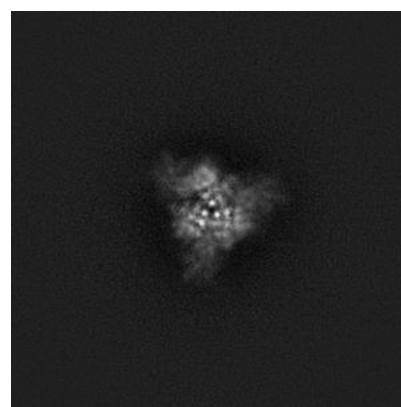
#### 2.1.1 Primary map



X



Y

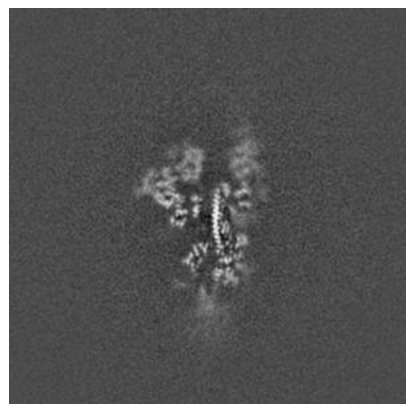


Z

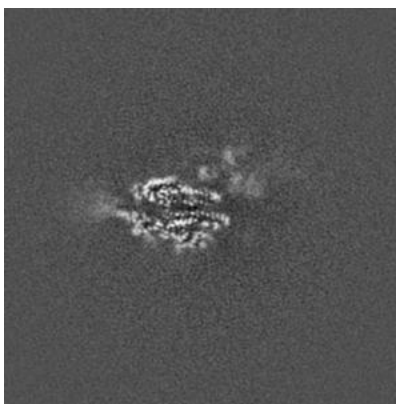
The images above show the map projected in three orthogonal directions.

### 2.2 Central slices [i](#)

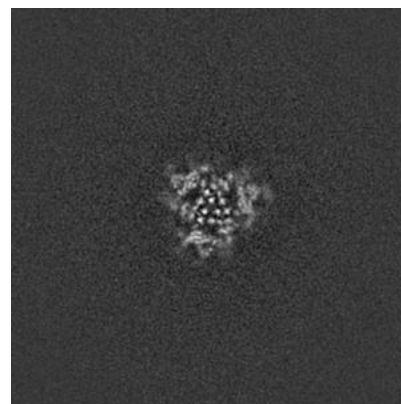
#### 2.2.1 Primary map



X Index: 256



Y Index: 256



Z Index: 256

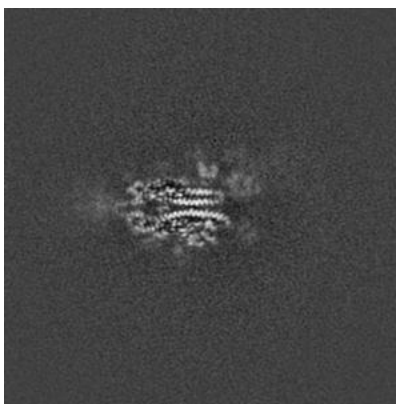
The images above show central slices of the map in three orthogonal directions.

## 2.3 Largest variance slices [i](#)

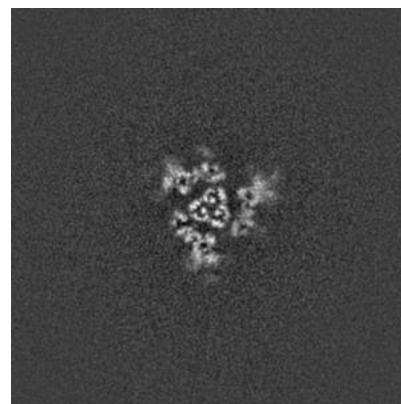
### 2.3.1 Primary map



X Index: 247



Y Index: 252



Z Index: 271

The images above show the largest variance slices of the map in three orthogonal directions.

## 2.4 Orthogonal surface views [i](#)

### 2.4.1 Primary map



X



Y



Z

The images above show the 3D surface view of the map at the recommended contour level 1.8. These images, in conjunction with the slice images, may facilitate assessment of whether an appropriate contour level has been provided.

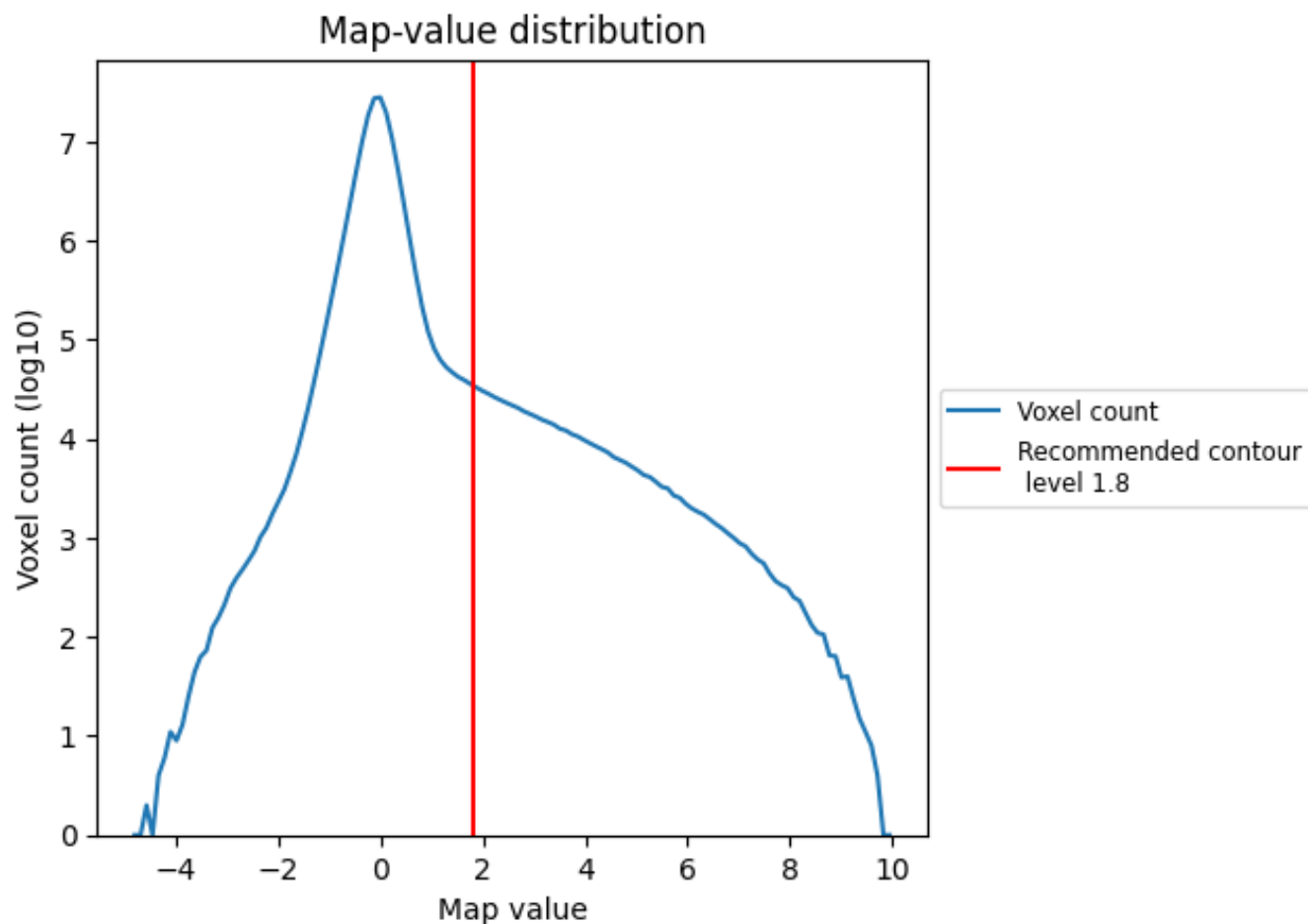
## 2.5 Mask visualisation

This section was not generated. No masks/segmentation were deposited.

### 3 Map analysis [i](#)

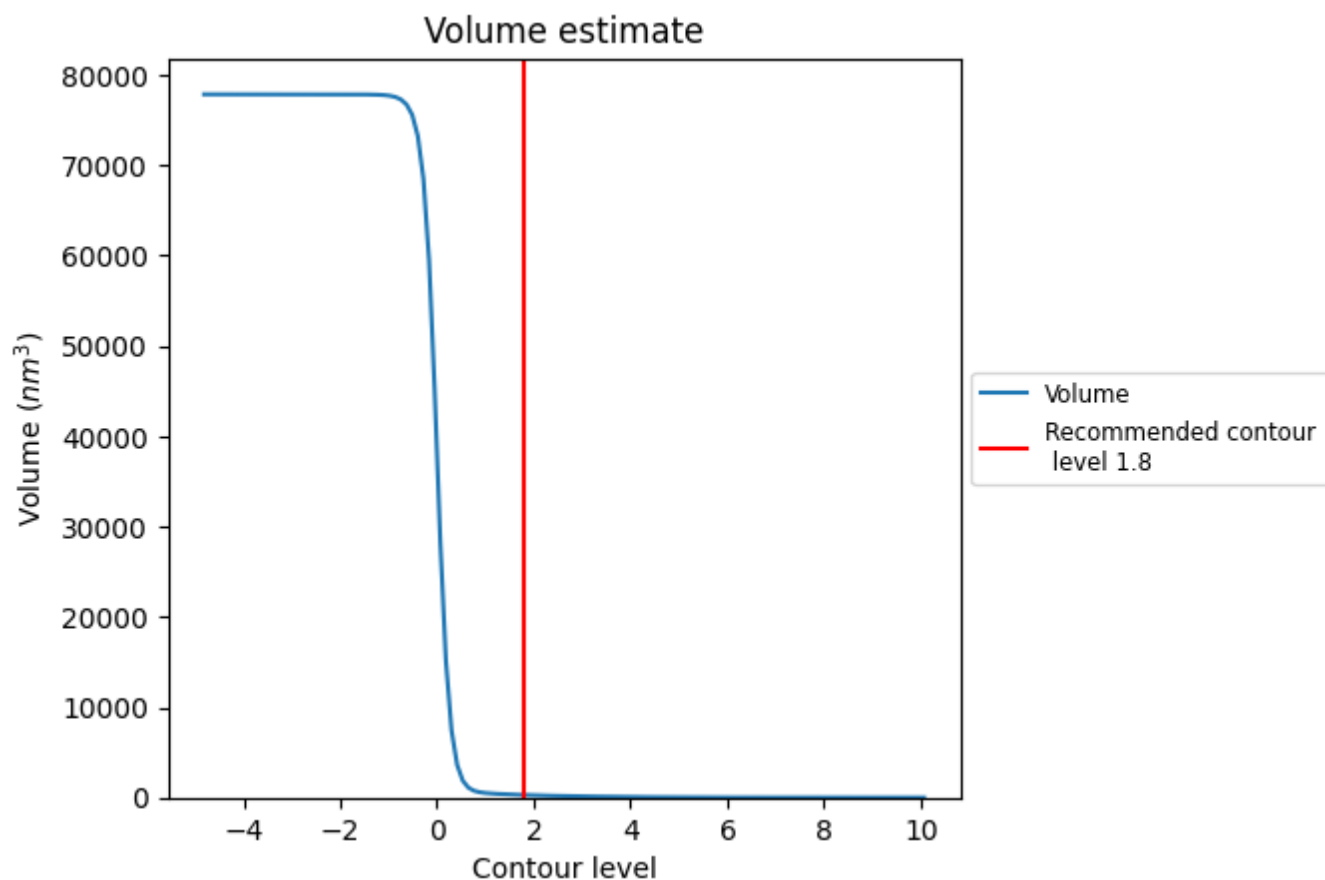
This section contains the results of statistical analysis of the map.

#### 3.1 Map-value distribution [i](#)



The map-value distribution is plotted in 128 intervals along the x-axis. The y-axis is logarithmic. A spike in this graph at zero usually indicates that the volume has been masked.

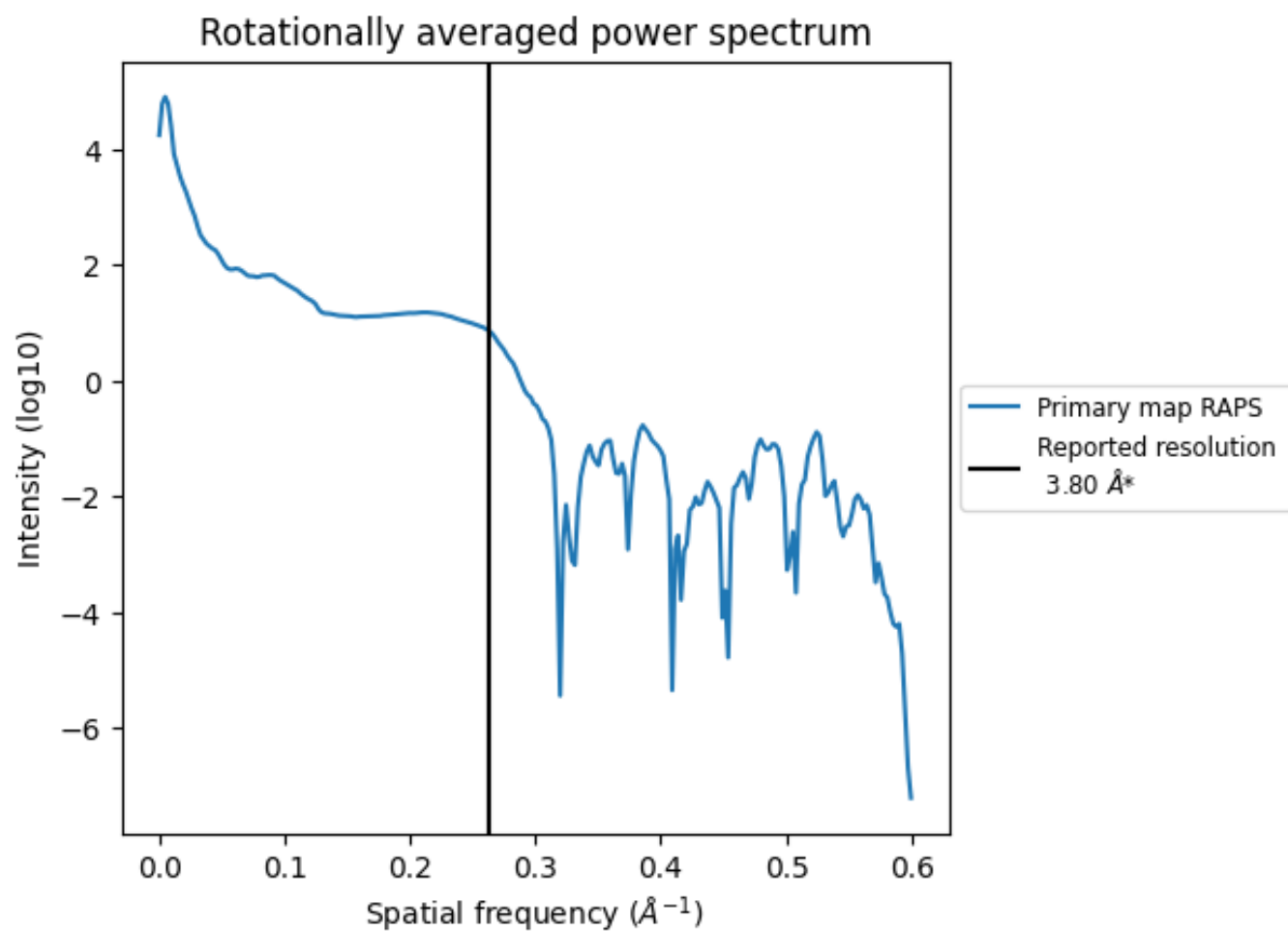
### 3.2 Volume estimate [i](#)



The volume at the recommended contour level is 283  $\text{nm}^3$ ; this corresponds to an approximate mass of 256 kDa.

The volume estimate graph shows how the enclosed volume varies with the contour level. The recommended contour level is shown as a vertical line and the intersection between the line and the curve gives the volume of the enclosed surface at the given level.

### 3.3 Rotationally averaged power spectrum ⓘ



\*Reported resolution corresponds to spatial frequency of 0.263 Å<sup>-1</sup>



## 4 Fourier-Shell correlation

This section was not generated. No FSC curve or half-maps provided.