



wwPDB EM Validation Summary Report ⓘ

Mar 31, 2021 – 10:54 am BST

EMDB ID : EMD-4092
Title : Tomographic reconstruction of ex vivo mammalian prions
Authors : Terry, C.; Wenborn, A.; Gros, N.; Sells, J.; Joiner, S.; Hosszu, L.L.P.; Tattum, M.H.; Panico, S.; Clare, D.K.; Collinge, J.; Saibil, H.R.; Wadsworth, J.D.F.
Deposited on : 2016-08-04
Resolution : Not provided

This is a wwPDB EM Validation Summary Report for a publicly released PDB entry.

We welcome your comments at validation@mail.wwpdb.org

A user guide is available at

<https://www.wwpdb.org/validation/2017/EMTomogramValidationReportHelp>

with specific help available everywhere you see the ⓘ symbol.

The following versions of software and data (see [references ⓘ](#)) were used in the production of this report:

EMDB validation analysis : 0.0.0.dev75
Validation Pipeline (wwPDB-VP) : 2.18

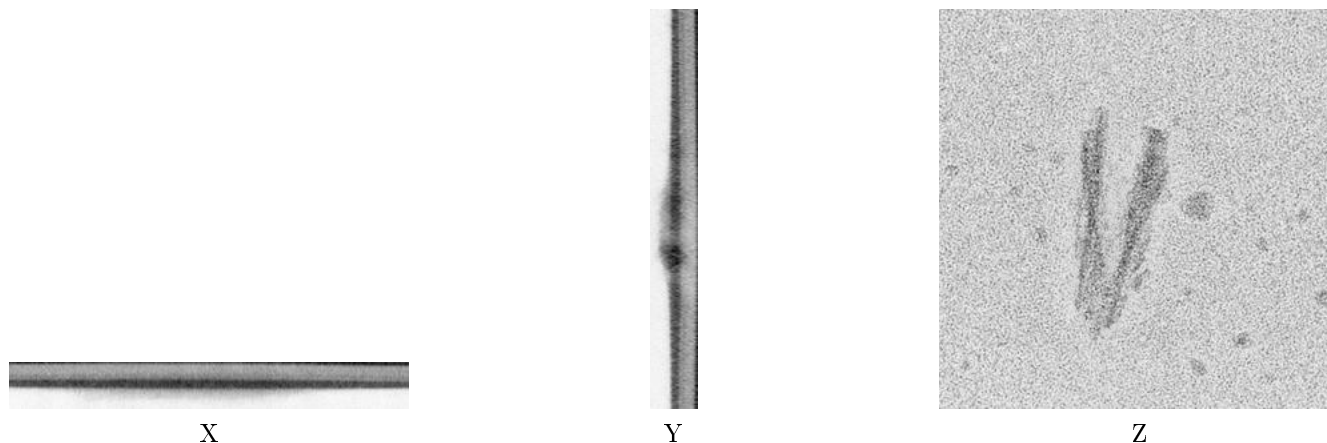
1 Experimental information ⓘ

| Property | Value | Source |
|--------------------------------------|-------------------------------|-----------|
| EM reconstruction method | TOMOGRAPHY | Depositor |
| Imposed symmetry | Not Provided | |
| Number of tilted images used | 51 | Depositor |
| Resolution determination method | Not provided | |
| CTF correction method | Not provided | |
| Microscope | FEI TECNAI 12 | Depositor |
| Voltage (kV) | 120 | Depositor |
| Electron dose ($e^-/\text{\AA}^2$) | 5.0 | Depositor |
| Minimum defocus (nm) | 0.5 | Depositor |
| Maximum defocus (nm) | 1.0 | Depositor |
| Magnification | 58594. | Depositor |
| Image detector | GATAN MULTISCAN | Depositor |
| Maximum voxel value | 127.000 | Depositor |
| Minimum voxel value | -128.000 | Depositor |
| Average voxel value | 80.925 | Depositor |
| Voxel value standard deviation | 75.538 | Depositor |
| Recommended contour level | Not applicable | |
| Tomogram size (Å) | 2491.7998, 2491.7998, 286.557 | wwPDB |
| Tomogram dimensions | 600, 600, 69 | wwPDB |
| Tomogram angles (°) | 90.0, 90.0, 90.0 | wwPDB |
| Grid spacing (Å) | 4.153, 4.153, 4.153 | Depositor |

2 Tomogram visualisation [i](#)

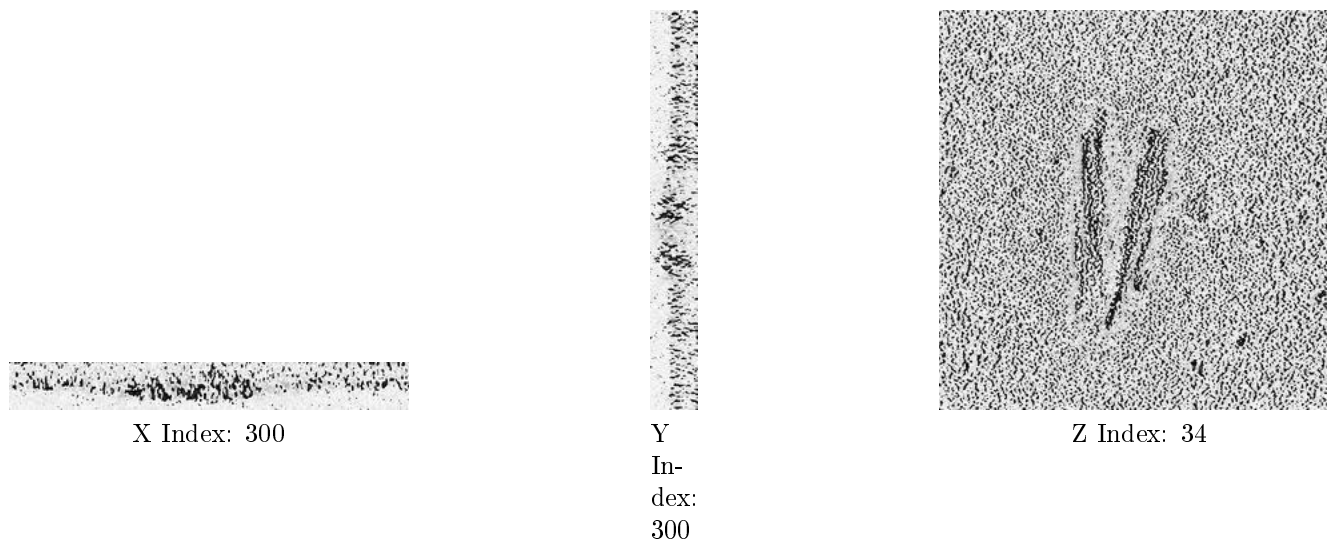
This section contains visualisations of the EMDB entry EMD-4092. These allow visual inspection of the internal detail of the tomogram and identification of artifacts.

2.1 Orthogonal projections [i](#)



The images above show the tomogram projected in three orthogonal directions.

2.2 Central slices [i](#)

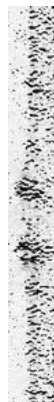


The images above show central slices of the tomogram in three orthogonal directions.

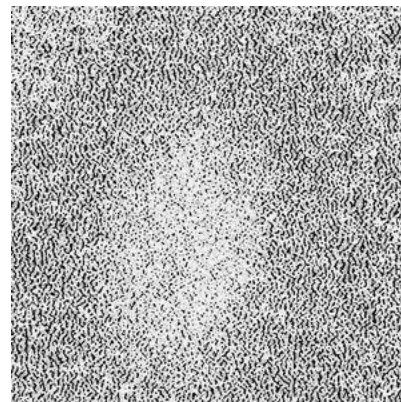
2.3 Largest variance slices [i](#)



X Index: 237



Y
In-
dex:
378



Z Index: 68

The images above show the largest variance slices of the tomogram in three orthogonal directions.

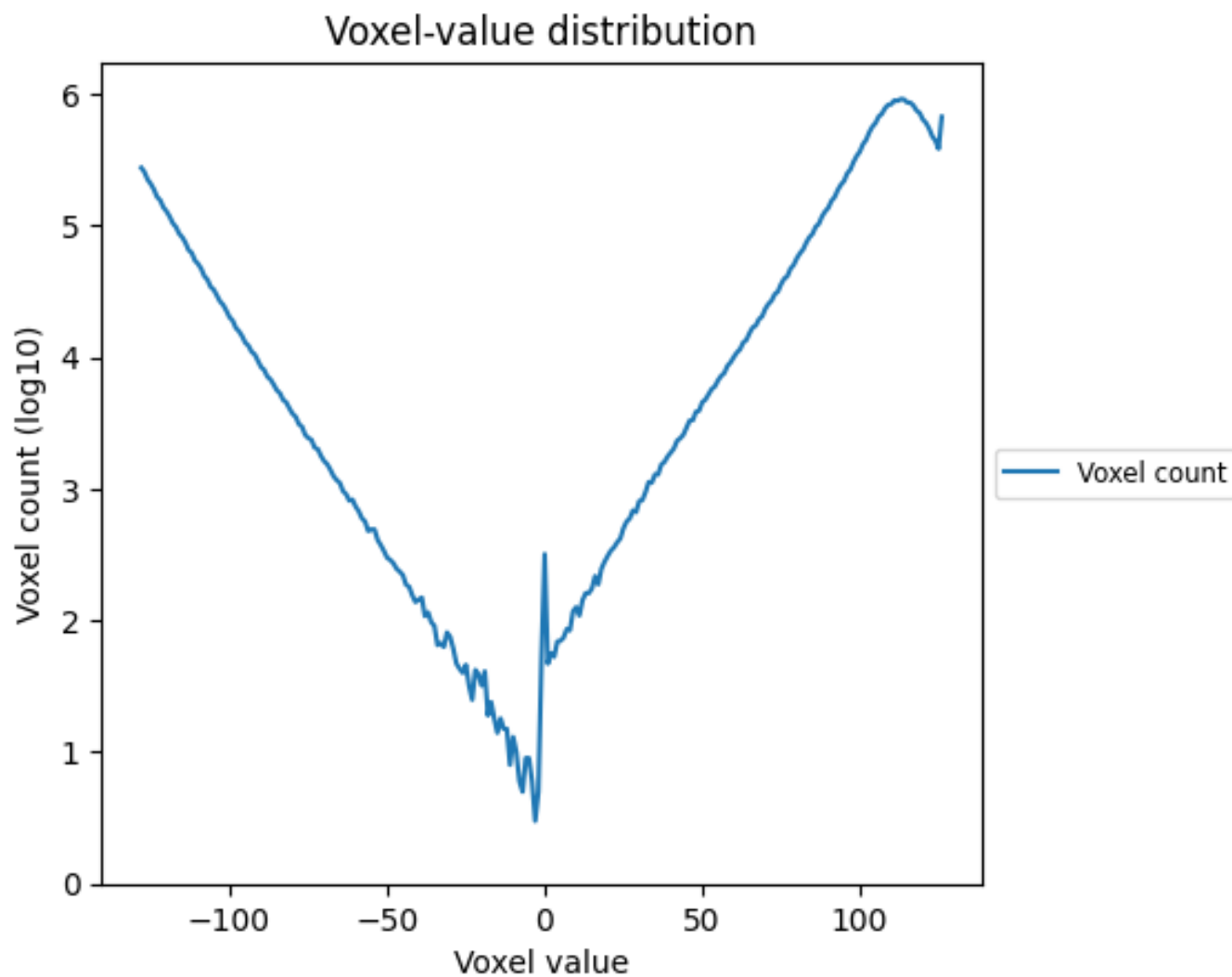
2.4 Mask visualisation [i](#)

This section was not generated. No masks/segmentation were deposited.

3 Tomogram analysis [i](#)

This section contains the results of statistical analysis of the tomogram.

3.1 Voxel-value distribution [i](#)



The voxel-value distribution is plotted in 128 intervals along the x-axis. The y-axis is logarithmic.