



Full wwPDB EM Validation Report ⓘ

Mar 8, 2022 – 10:00 AM EST

EMDB ID : EMD-7488
Title : The tether and tether head complex and I1 dynein complex region extracted from the cryo-electron tomography and subtomographic average (1622 axone-mal repeats) of isolated Tetrahymena wild type cilia
Authors : Fu, G.; Wang, Q.; Phan, N.; Urbanska, P.; Joachimiak, E.; Lin, J.; Wloga, D.; Nicastro, D.
Deposited on : 2018-03-01
Resolution : 33.00 Å(reported)

This is a Full wwPDB EM Validation Report for a publicly released PDB entry.

We welcome your comments at validation@mail.wwpdb.org

A user guide is available at

<https://www.wwpdb.org/validation/2017/EMTomogramValidationReportHelp>
with specific help available everywhere you see the ⓘ symbol.

The following versions of software and data (see [references ⓘ](#)) were used in the production of this report:

EMDB validation analysis : 0.0.0.dev97
Validation Pipeline (wwPDB-VP) : 2.27

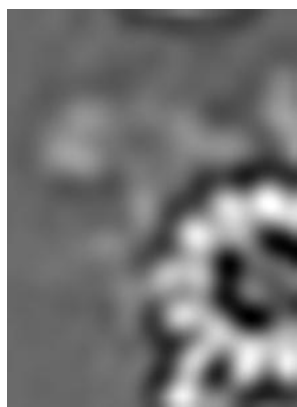
1 Experimental information

| Property | Value | Source |
|--------------------------------------|--------------------------------|-----------|
| EM reconstruction method | TOMOGRAPHY | Depositor |
| Imposed symmetry | Not Provided | |
| Number of tilted images used | 720 | Depositor |
| Resolution determination method | FSC 0.5 CUT-OFF | Depositor |
| CTF correction method | Not provided | |
| Microscope | FEI TECNAI F30 | Depositor |
| Voltage (kV) | 300 | Depositor |
| Electron dose ($e^-/\text{\AA}^2$) | 1.5 | Depositor |
| Minimum defocus (nm) | 6.0 | Depositor |
| Maximum defocus (nm) | 8.0 | Depositor |
| Magnification | 13500.0 | Depositor |
| Image detector | GATAN ULTRASCAN 1000 (2k x 2k) | Depositor |
| Maximum voxel value | 182.804 | Depositor |
| Minimum voxel value | 83.132 | Depositor |
| Average voxel value | 125.717 | Depositor |
| Voxel value standard deviation | 11.817 | Depositor |
| Recommended contour level | Not applicable | |
| Tomogram size (\AA) | 599.82, 399.88, 549.83496 | wwPDB |
| Tomogram dimensions | 60, 40, 55 | wwPDB |
| Tomogram angles ($^\circ$) | 90.0, 90.0, 90.0 | wwPDB |
| Grid spacing (\AA) | 9.997, 9.997, 9.997 | Depositor |

2 Tomogram visualisation [i](#)

This section contains visualisations of the EMDB entry EMD-7488. These allow visual inspection of the internal detail of the tomogram and identification of artifacts.

2.1 Orthogonal projections [i](#)



X



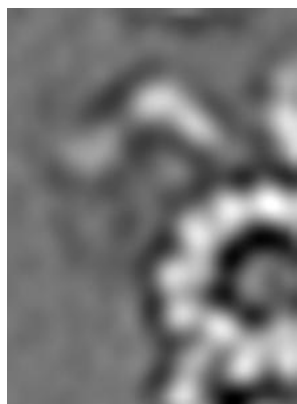
Y



Z

The images above show the tomogram projected in three orthogonal directions.

2.2 Central slices [i](#)



X Index: 30



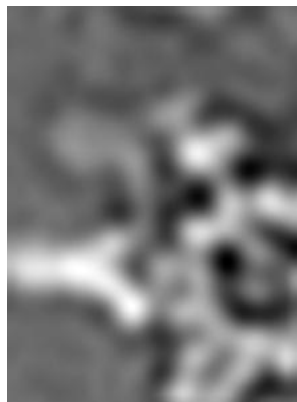
Y Index: 20



Z Index: 27

The images above show central slices of the tomogram in three orthogonal directions.

2.3 Largest variance slices [i](#)



X Index: 44



Y Index: 38



Z Index: 27

The images above show the largest variance slices of the tomogram in three orthogonal directions.

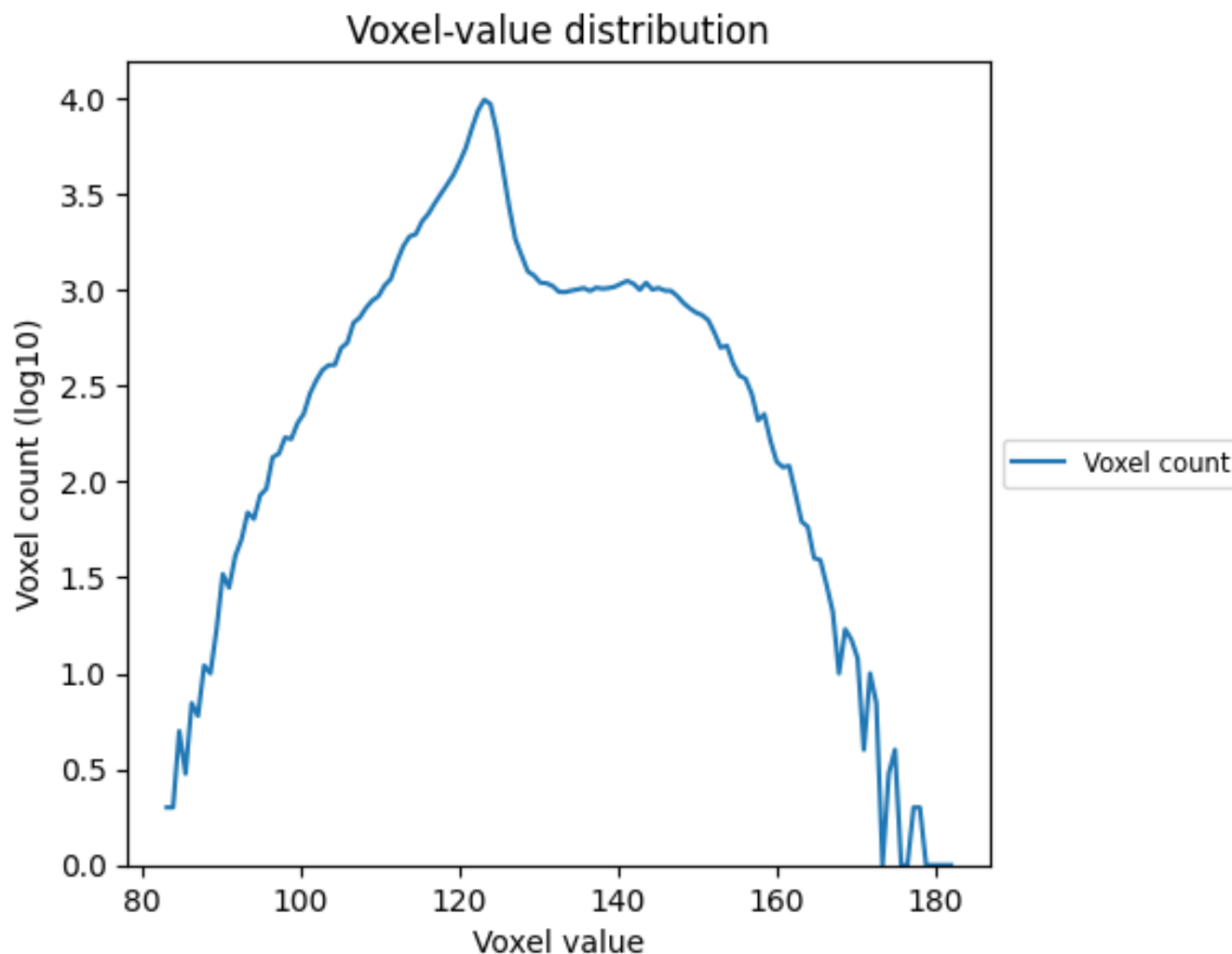
2.4 Mask visualisation [i](#)

This section was not generated. No masks/segmentation were deposited.

3 Tomogram analysis [i](#)

This section contains the results of statistical analysis of the tomogram.

3.1 Voxel-value distribution [i](#)



The voxel-value distribution is plotted in 128 intervals along the x-axis. The y-axis is logarithmic.