



wwPDB EM Validation Summary Report ⓘ

Nov 7, 2022 – 02:07 PM EST

EMDB ID : EMD-7618
Title : Alpha Synuclein fibril formed by full length protein - Rod Polymorph
Authors : Li, B.; Hatami, A.; Ge, P.; Murray, K.A.; Sheth, P.; Zhang, M.; Nair, G.;
Sawaya, M.R.; Zhu, C.; Broad, M.; Shin, W.S.; Ye, S.; John, V.; Eisenberg,
D.S.; Zhou, Z.H.; Jiang, L.
Deposited on : 2018-03-23
Resolution : 3.50 Å(reported)

This is a wwPDB EM Validation Summary Report for a publicly released PDB entry.

We welcome your comments at validation@mail.wwpdb.org

A user guide is available at

<https://www.wwpdb.org/validation/2017/EMMapValidationReportHelp>
with specific help available everywhere you see the ⓘ symbol.

The types of validation reports are described at

<http://www.wwpdb.org/validation/2017/FAQs#types>.

The following versions of software and data (see [references ⓘ](#)) were used in the production of this report:

EMDB validation analysis : 0.0.1.dev43
Validation Pipeline (wwPDB-VP) : 2.31.2

1 Experimental information

Property	Value	Source
EM reconstruction method	HELICAL	Depositor
Imposed symmetry	HELICAL, twist=179.53°, rise=2.4 Å, axial sym=C1	Depositor
Number of segments used	23830	Depositor
Resolution determination method	FSC 0.5 CUT-OFF	Depositor
CTF correction method	Not provided	
Microscope	FEI TITAN KRIOS	Depositor
Voltage (kV)	300	Depositor
Electron dose ($e^-/\text{\AA}^2$)	30.0	Depositor
Minimum defocus (nm)	1.5	Depositor
Maximum defocus (nm)	4.0	Depositor
Magnification	130000.0	Depositor
Image detector	GATAN K2 SUMMIT (4k x 4k)	Depositor
Maximum map value	0.022	Depositor
Minimum map value	-0.011	Depositor
Average map value	0.001	Depositor
Map value standard deviation	0.003	Depositor
Recommended contour level	0.0085	Depositor
Map size (Å)	205.44, 205.44, 205.44	wwPDB
Map dimensions	192, 192, 192	wwPDB
Map angles (°)	90.0, 90.0, 90.0	wwPDB
Pixel spacing (Å)	1.07, 1.07, 1.07	Depositor

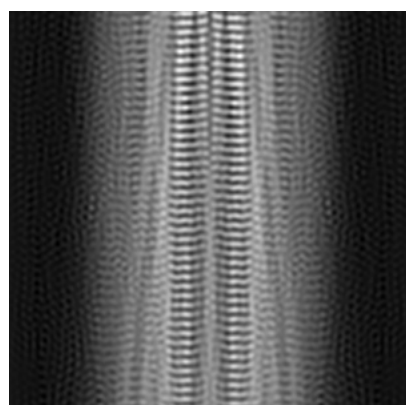
2 Map visualisation [i](#)

This section contains visualisations of the EMDB entry EMD-7618. These allow visual inspection of the internal detail of the map and identification of artifacts.

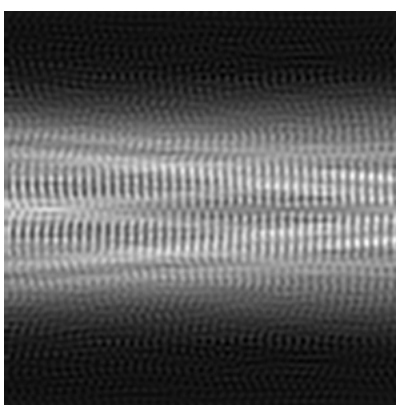
No raw map or half-maps were deposited for this entry and therefore no images, graphs, etc. pertaining to the raw map can be shown.

2.1 Orthogonal projections [i](#)

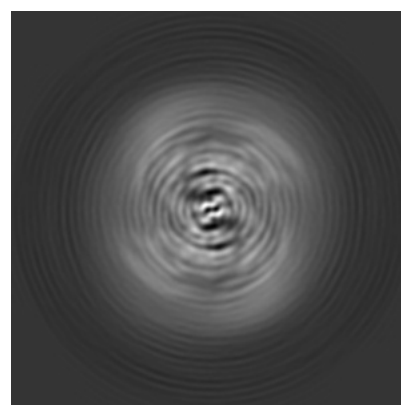
2.1.1 Primary map



X



Y

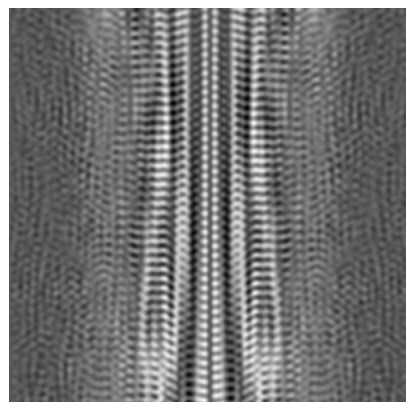


Z

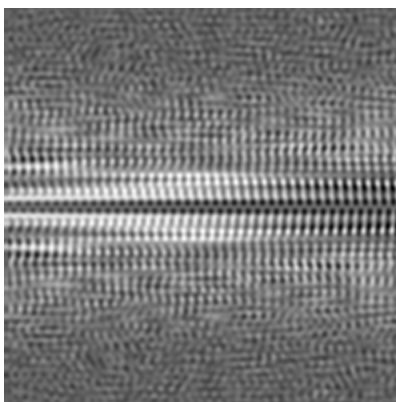
The images above show the map projected in three orthogonal directions.

2.2 Central slices [i](#)

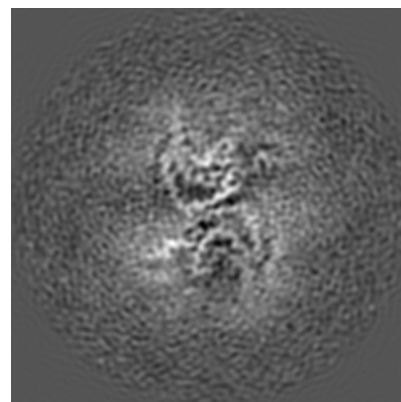
2.2.1 Primary map



X Index: 96



Y Index: 96

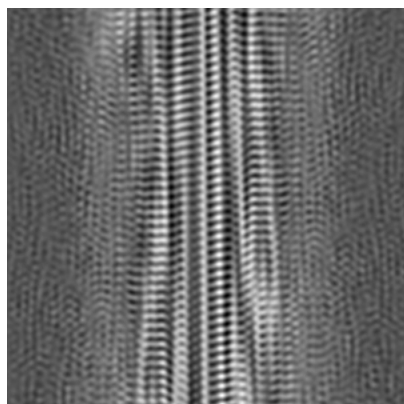


Z Index: 96

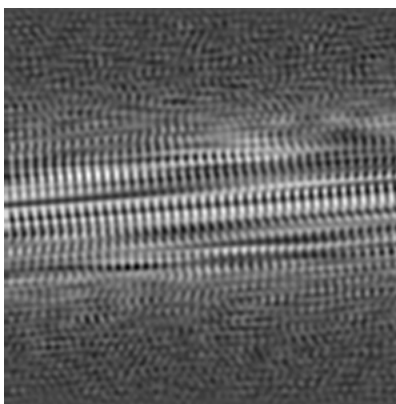
The images above show central slices of the map in three orthogonal directions.

2.3 Largest variance slices [i](#)

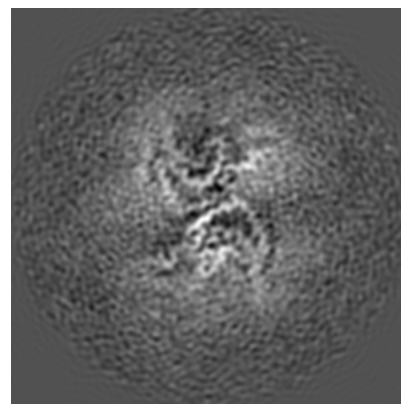
2.3.1 Primary map



X Index: 99



Y Index: 117

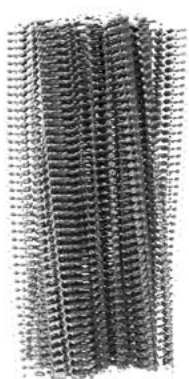


Z Index: 62

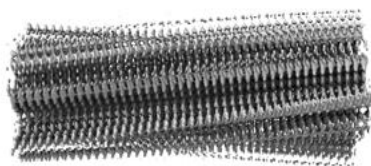
The images above show the largest variance slices of the map in three orthogonal directions.

2.4 Orthogonal surface views [i](#)

2.4.1 Primary map



X



Y



Z

The images above show the 3D surface view of the map at the recommended contour level 0.0085. These images, in conjunction with the slice images, may facilitate assessment of whether an appropriate contour level has been provided.

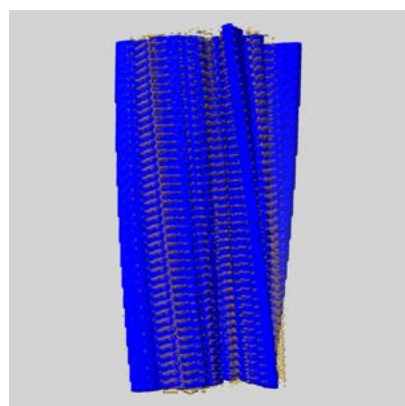
2.5 Mask visualisation [i](#)

This section shows the 3D surface view of the primary map at 50% transparency overlaid with the specified mask at 0% transparency

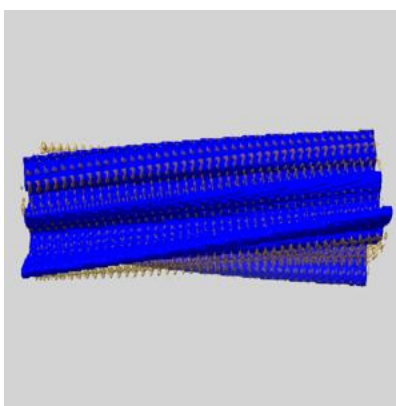
A mask typically either:

- Encompasses the whole structure
- Separates out a domain, a functional unit, a monomer or an area of interest from a larger structure

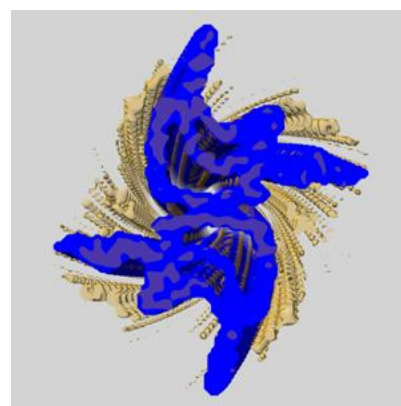
2.5.1 emd_7618_msk_1.map [i](#)



X



Y

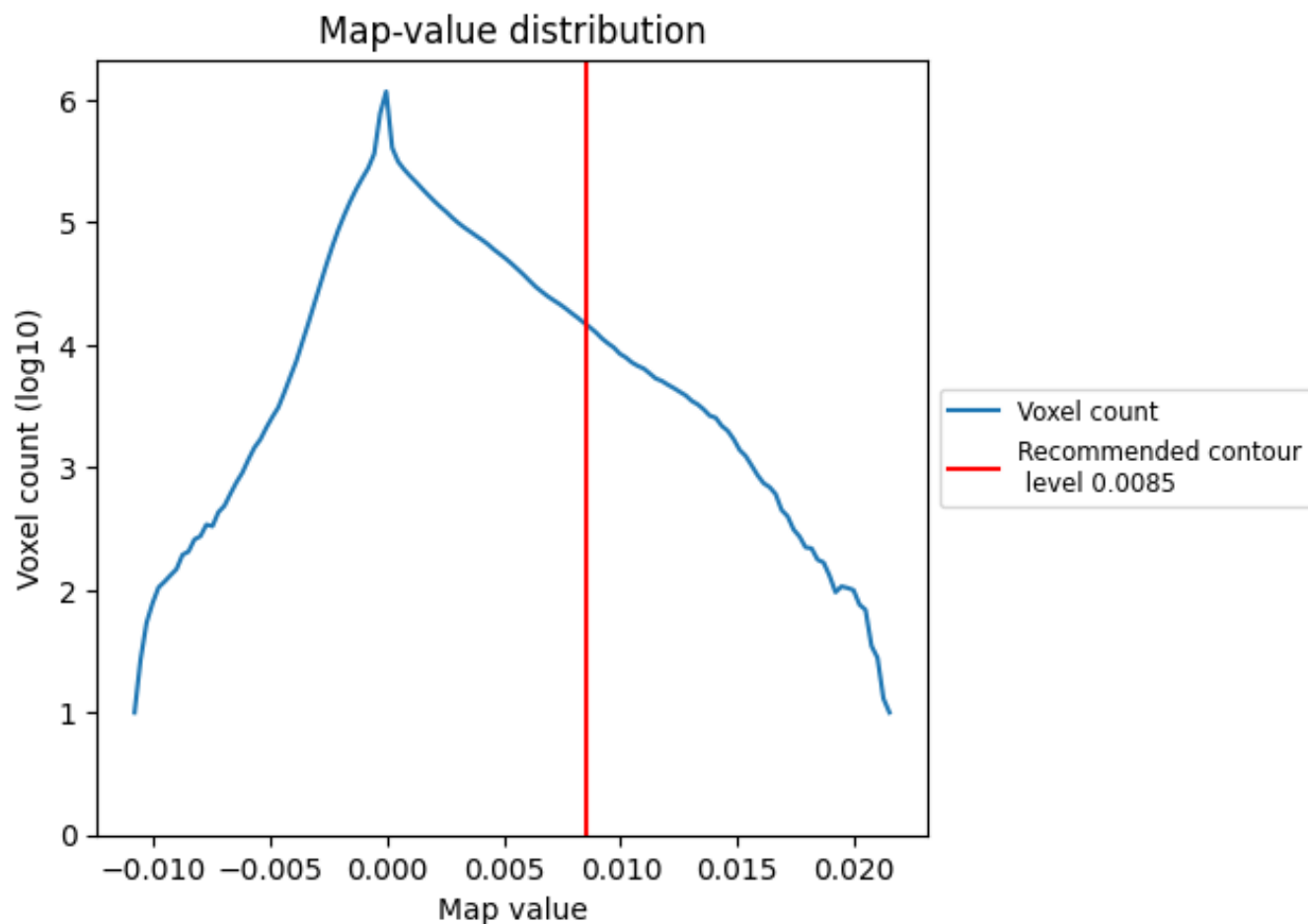


Z

3 Map analysis [i](#)

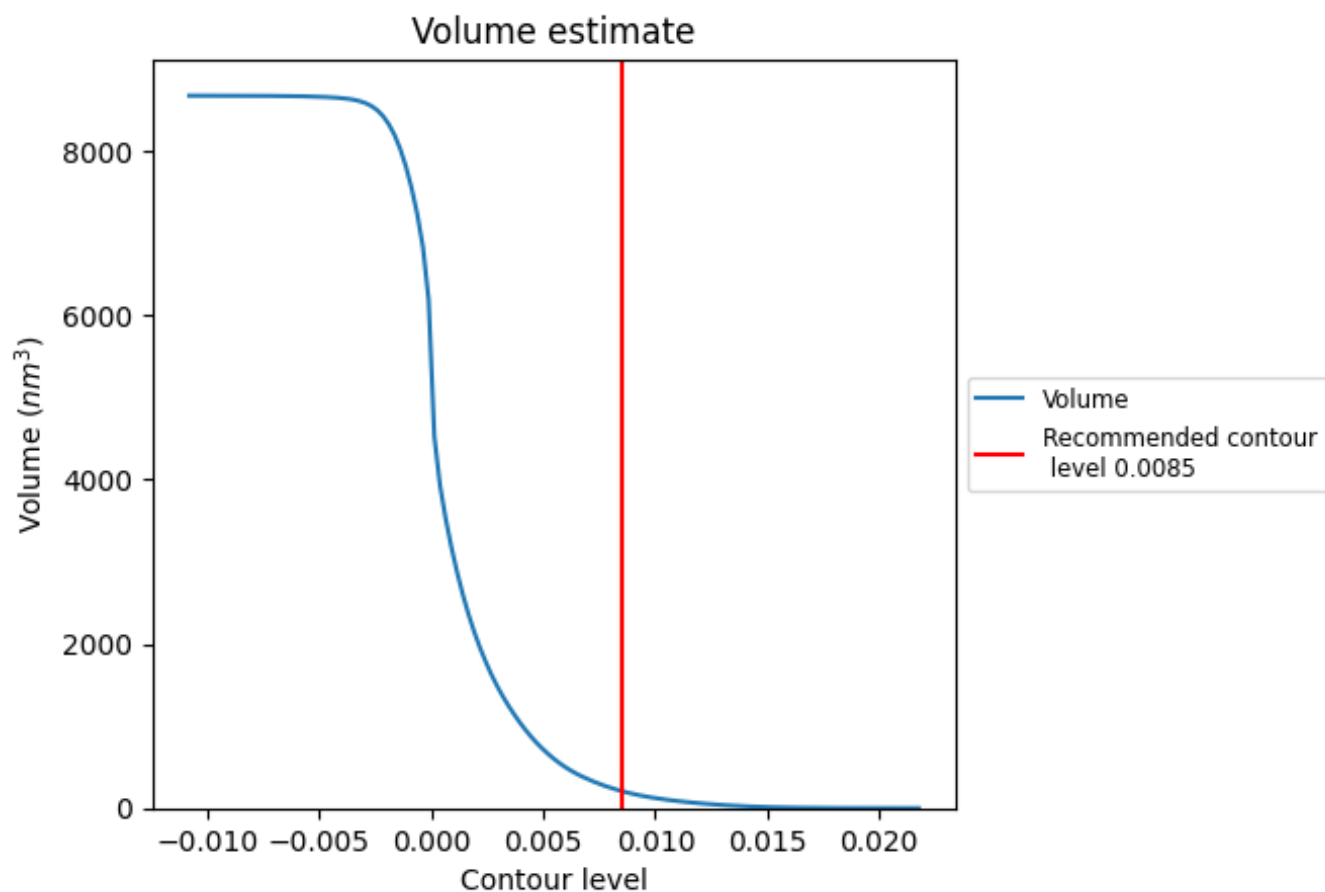
This section contains the results of statistical analysis of the map.

3.1 Map-value distribution [i](#)



The map-value distribution is plotted in 128 intervals along the x-axis. The y-axis is logarithmic. A spike in this graph at zero usually indicates that the volume has been masked.

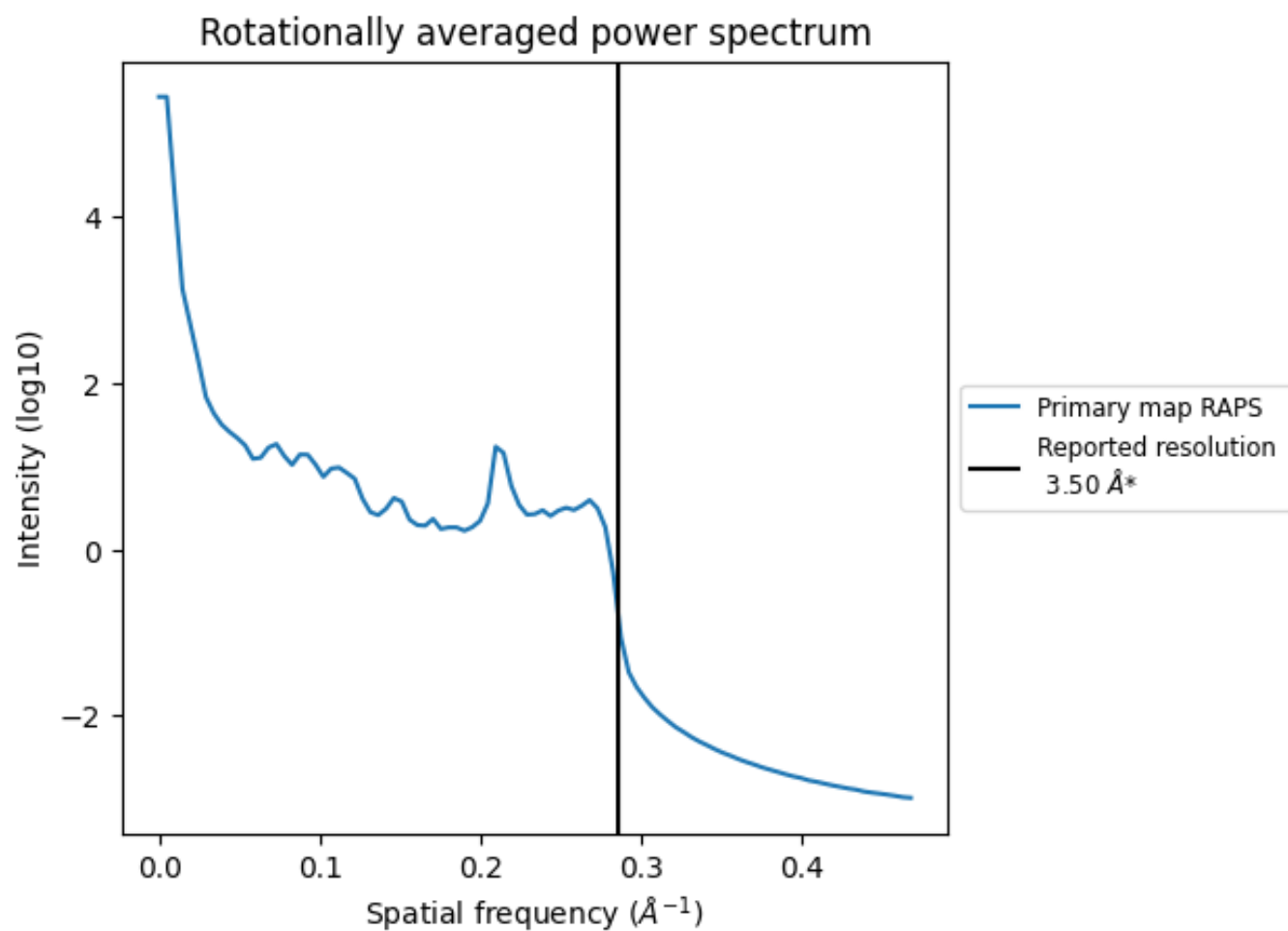
3.2 Volume estimate [i](#)



The volume at the recommended contour level is 208 nm³; this corresponds to an approximate mass of 188 kDa.

The volume estimate graph shows how the enclosed volume varies with the contour level. The recommended contour level is shown as a vertical line and the intersection between the line and the curve gives the volume of the enclosed surface at the given level.

3.3 Rotationally averaged power spectrum ⓘ



*Reported resolution corresponds to spatial frequency of 0.286 Å⁻¹

4 Fourier-Shell correlation

This section was not generated. No FSC curve or half-maps provided.