



Full wwPDB X-ray Structure Validation Report ⓘ

May 25, 2020 – 06:37 am BST

PDB ID : 154D
Title : DNA DISTORTION IN BIS-INTERCALATED COMPLEXES
Authors : Peek, M.E.; Lipscomb, L.A.; Bertrand, J.A.; Gao, Q.; Roques, B.P.; Garbay-Jaureguiberry, C.; Williams, L.D.
Deposited on : 1993-12-14
Resolution : 2.50 Å(reported)

This is a Full wwPDB X-ray Structure Validation Report for a publicly released PDB entry.

We welcome your comments at validation@mail.wwpdb.org

A user guide is available at

<https://www.wwpdb.org/validation/2017/XrayValidationReportHelp>

with specific help available everywhere you see the ⓘ symbol.

The following versions of software and data (see [references ⓘ](#)) were used in the production of this report:

MolProbity	:	4.02b-467
Mogul	:	1.8.5 (274361), CSD as541be (2020)
Xtriage (Phenix)	:	NOT EXECUTED
EDS	:	NOT EXECUTED
buster-report	:	1.1.7 (2018)
Percentile statistics	:	20191225.v01 (using entries in the PDB archive December 25th 2019)
Ideal geometry (proteins)	:	Engh & Huber (2001)
Ideal geometry (DNA, RNA)	:	Parkinson et al. (1996)
Validation Pipeline (wwPDB-VP)	:	2.11

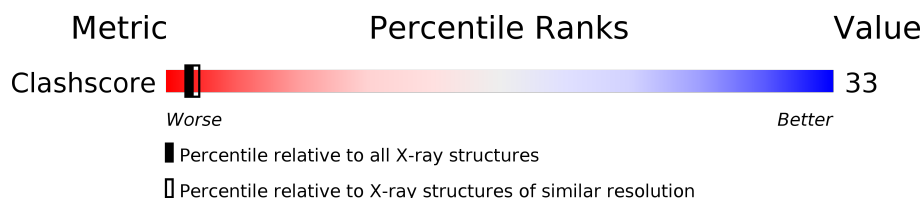
1 Overall quality at a glance

The following experimental techniques were used to determine the structure:

X-RAY DIFFRACTION

The reported resolution of this entry is 2.50 Å.



Percentile scores (ranging between 0-100) for global validation metrics of the entry are shown in the following graphic. The table shows the number of entries on which the scores are based.



Metric	Whole archive (#Entries)	Similar resolution (#Entries, resolution range(Å))
Clashscore	141614	5346 (2.50-2.50)

The table below summarises the geometric issues observed across the polymeric chains and their fit to the electron density. The red, orange, yellow and green segments on the lower bar indicate the fraction of residues that contain outliers for ≥ 3 , 2, 1 and 0 types of geometric quality criteria respectively. A grey segment represents the fraction of residues that are not modelled. The numeric value for each fraction is indicated below the corresponding segment, with a dot representing fractions $\leq 5\%$

Note EDS was not executed.

Mol	Chain	Length	Quality of chain
1	A	4	
1	B	4	

2 Entry composition [i](#)

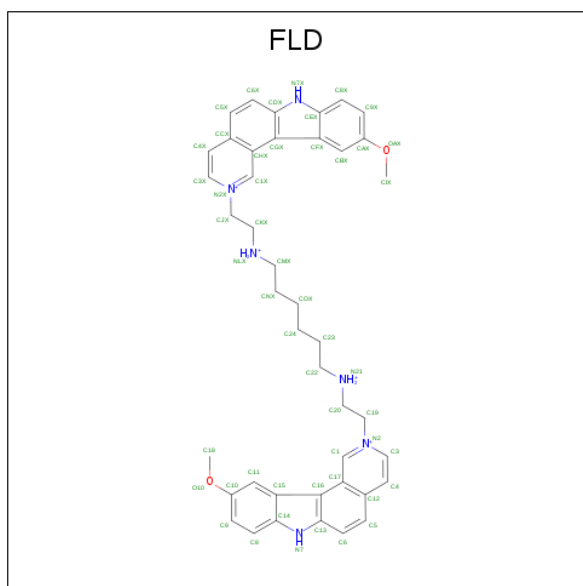
There are 3 unique types of molecules in this entry. The entry contains 237 atoms, of which 0 are hydrogens and 0 are deuteriums.

In the tables below, the ZeroOcc column contains the number of atoms modelled with zero occupancy, the AltConf column contains the number of residues with at least one atom in alternate conformation and the Trace column contains the number of residues modelled with at most 2 atoms.

- Molecule 1 is a DNA chain called DNA (5'-D(*(CBR)P*GP*CP*G)-3').

Mol	Chain	Residues	Atoms						ZeroOcc	AltConf	Trace
1	A	4	Total	Br	C	N	O	P	0	0	0
			80	1	38	16	22	3			
1	B	4	Total	Br	C	N	O	P	0	0	0
			80	1	38	16	22	3			

- Molecule 2 is BIS-(N-ETHYLPYRIDINIUM-(3-METHOXYCARBAZOLE))HEXANE-1,6-DIAMINE (three-letter code: FLD) (formula: C₄₂H₄₈N₆O₂).



Mol	Chain	Residues	Atoms				ZeroOcc	AltConf
2	B	1	Total	C	N	O	0	0
			50	42	6	2		

- Molecule 3 is water.

Mol	Chain	Residues	Atoms		ZeroOcc	AltConf
3	A	10	Total	O	0	0
			10	10		

Continued on next page...

Continued from previous page...

Mol	Chain	Residues	Atoms		ZeroOcc	AltConf
3	B	17	Total	O	0	0
			17	17		

3 Residue-property plots

These plots are drawn for all protein, RNA and DNA chains in the entry. The first graphic for a chain summarises the proportions of the various outlier classes displayed in the second graphic. The second graphic shows the sequence view annotated by issues in geometry. Residues are color-coded according to the number of geometric quality criteria for which they contain at least one outlier: green = 0, yellow = 1, orange = 2 and red = 3 or more. Stretches of 2 or more consecutive residues without any outlier are shown as a green connector. Residues present in the sample, but not in the model, are shown in grey.


Note EDS was not executed.

- Molecule 1: DNA (5'-D(*(CBR)P*GP*CP*G)-3')

Chain A: 



- Molecule 1: DNA (5'-D(*(CBR)P*GP*CP*G)-3')

Chain B: 



4 Data and refinement statistics

Xtriage (Phenix) and EDS were not executed - this section is therefore incomplete.

Property	Value
Space group	P 41 21 2
Cell constants a, b, c, α , β , γ	27.09 Å 27.09 Å 81.89 Å 90.00° 90.00° 90.00°
Resolution (Å)	7.10 – 2.50
% Data completeness (in resolution range)	99.7 (7.10-2.50)
R_{merge}	(Not available)
R_{sym}	(Not available)
Refinement program	PROLSQ (MODIFIED BY G.J.QUIGLEY), MODIFIED BY G.J.QUIGLEY
R, R_{free}	0.239 , (Not available)
Estimated twinning fraction	No twinning to report.
Total number of atoms	237
Average B, all atoms (Å ²)	16.0

5 Model quality ⓘ

5.1 Standard geometry ⓘ

Bond lengths and bond angles in the following residue types are not validated in this section: CBR, FLD

The Z score for a bond length (or angle) is the number of standard deviations the observed value is removed from the expected value. A bond length (or angle) with $|Z| > 5$ is considered an outlier worth inspection. RMSZ is the root-mean-square of all Z scores of the bond lengths (or angles).

Mol	Chain	Bond lengths		Bond angles	
		RMSZ	# Z >5	RMSZ	# Z >5
1	A	4.47	21/71 (29.6%)	5.78	34/110 (30.9%)
1	B	4.16	13/71 (18.3%)	5.45	30/110 (27.3%)
All	All	4.32	34/142 (23.9%)	5.62	64/220 (29.1%)

All (34) bond length outliers are listed below:

Mol	Chain	Res	Type	Atoms	Z	Observed(Å)	Ideal(Å)
1	B	6	DG	C2-N2	-11.61	1.23	1.34
1	A	2	DG	C2-N2	-11.25	1.23	1.34
1	B	8	DG	C2-N2	-9.74	1.24	1.34
1	A	4	DG	C2-N2	-9.37	1.25	1.34
1	A	2	DG	C6-N1	-9.12	1.33	1.39
1	B	8	DG	C6-N1	-8.96	1.33	1.39
1	B	8	DG	N9-C8	-8.88	1.31	1.37
1	B	6	DG	C2'-C1'	8.59	1.60	1.52
1	B	6	DG	C6-N1	-8.38	1.33	1.39
1	A	2	DG	P-O5'	8.18	1.68	1.59
1	A	4	DG	C6-N1	-8.16	1.33	1.39
1	A	4	DG	C4'-C3'	8.13	1.61	1.53
1	A	3	DC	C4'-C3'	7.79	1.61	1.53
1	A	3	DC	P-O5'	7.74	1.67	1.59
1	B	8	DG	C8-N7	7.39	1.35	1.30
1	A	3	DC	C2'-C1'	7.09	1.59	1.52
1	A	4	DG	C2'-C1'	7.01	1.59	1.52
1	A	3	DC	N3-C4	6.94	1.38	1.33
1	A	2	DG	C8-N7	6.93	1.35	1.30
1	B	8	DG	C4'-C3'	6.82	1.60	1.53
1	A	2	DG	N9-C8	-6.68	1.33	1.37
1	B	7	DC	C4'-C3'	6.57	1.59	1.53
1	A	4	DG	C8-N7	6.20	1.34	1.30
1	B	7	DC	O4'-C1'	5.85	1.49	1.42

Continued on next page...

Continued from previous page...

Mol	Chain	Res	Type	Atoms	Z	Observed(Å)	Ideal(Å)
1	A	4	DG	P-O5'	5.61	1.65	1.59
1	A	4	DG	C1'-N9	-5.43	1.39	1.47
1	A	2	DG	C3'-O3'	-5.38	1.36	1.44
1	A	3	DC	C3'-O3'	-5.36	1.36	1.44
1	B	6	DG	P-O5'	5.23	1.65	1.59
1	A	2	DG	C1'-N9	-5.20	1.40	1.47
1	B	7	DC	N1-C2	-5.12	1.35	1.40
1	A	2	DG	C2'-C1'	5.09	1.57	1.52
1	B	8	DG	N9-C4	5.07	1.42	1.38
1	A	3	DC	O5'-C5'	5.02	1.54	1.42

All (64) bond angle outliers are listed below:

Mol	Chain	Res	Type	Atoms	Z	Observed(°)	Ideal(°)
1	A	3	DC	O4'-C4'-C3'	-16.97	95.82	106.00
1	A	3	DC	C1'-O4'-C4'	-15.72	94.38	110.10
1	B	7	DC	O4'-C4'-C3'	-15.55	96.67	106.00
1	A	4	DG	N3-C2-N2	-15.48	109.06	119.90
1	A	2	DG	N3-C2-N2	-15.38	109.13	119.90
1	B	6	DG	N3-C2-N2	-15.02	109.38	119.90
1	B	7	DC	N3-C4-C5	-13.71	116.41	121.90
1	B	8	DG	N3-C2-N2	-13.48	110.47	119.90
1	A	3	DC	P-O5'-C5'	-13.24	99.71	120.90
1	B	8	DG	C5-C6-N1	13.23	118.11	111.50
1	A	4	DG	O4'-C4'-C3'	-13.14	98.12	106.00
1	A	3	DC	N3-C4-C5	-12.40	116.94	121.90
1	B	7	DC	C2-N3-C4	11.81	125.81	119.90
1	A	4	DG	C6-N1-C2	-11.78	118.03	125.10
1	A	2	DG	P-O3'-C3'	11.75	133.80	119.70
1	B	6	DG	C5-C6-N1	11.68	117.34	111.50
1	A	4	DG	C5-C6-N1	11.58	117.29	111.50
1	A	4	DG	N1-C2-N3	11.35	130.71	123.90
1	B	6	DG	C6-N1-C2	-11.02	118.49	125.10
1	B	6	DG	N1-C2-N3	10.27	130.06	123.90
1	B	8	DG	C6-N1-C2	-10.15	119.01	125.10
1	A	2	DG	C5-C6-N1	9.61	116.30	111.50
1	A	3	DC	O5'-P-OP1	-9.55	97.10	105.70
1	B	7	DC	P-O3'-C3'	9.53	131.14	119.70
1	A	3	DC	C2-N3-C4	9.38	124.59	119.90
1	B	6	DG	C5-C6-O6	-9.24	123.06	128.60
1	A	2	DG	P-O5'-C5'	-9.13	106.28	120.90
1	B	7	DC	N1-C2-O2	9.07	124.34	118.90

Continued on next page...

Continued from previous page...

Mol	Chain	Res	Type	Atoms	Z	Observed(°)	Ideal(°)
1	B	8	DG	N1-C2-N3	8.97	129.28	123.90
1	B	7	DC	C1'-O4'-C4'	-8.76	101.34	110.10
1	B	8	DG	O4'-C4'-C3'	-8.56	100.86	106.00
1	A	2	DG	N1-C2-N3	8.54	129.02	123.90
1	B	7	DC	P-O5'-C5'	-8.39	107.47	120.90
1	A	2	DG	C5-C6-O6	-8.39	123.57	128.60
1	B	7	DC	O5'-P-OP1	-8.36	98.18	105.70
1	A	4	DG	O4'-C1'-N9	8.26	113.78	108.00
1	A	2	DG	C6-N1-C2	-8.20	120.18	125.10
1	A	4	DG	C4'-C3'-C2'	-8.09	95.82	103.10
1	B	6	DG	P-O3'-C3'	7.92	129.20	119.70
1	A	2	DG	O5'-P-OP2	-7.73	98.75	105.70
1	B	6	DG	O4'-C1'-C2'	-7.44	99.95	105.90
1	A	3	DC	N1-C2-O2	7.22	123.23	118.90
1	A	3	DC	P-O3'-C3'	7.14	128.26	119.70
1	B	6	DG	O4'-C1'-N9	6.64	112.65	108.00
1	A	2	DG	O4'-C1'-N9	6.63	112.64	108.00
1	B	6	DG	P-O5'-C5'	-6.43	110.61	120.90
1	A	4	DG	C2-N3-C4	-6.42	108.69	111.90
1	A	4	DG	C5-C6-O6	-6.32	124.81	128.60
1	A	2	DG	N1-C2-N2	6.27	121.84	116.20
1	A	2	DG	C2-N3-C4	-6.15	108.83	111.90
1	A	3	DC	O4'-C1'-C2'	-6.08	101.03	105.90
1	B	8	DG	C5-C6-O6	-6.07	124.96	128.60
1	B	8	DG	O5'-P-OP1	-6.00	100.30	105.70
1	A	2	DG	OP1-P-OP2	5.93	128.50	119.60
1	B	8	DG	C5'-C4'-O4'	5.77	120.26	109.30
1	A	4	DG	O5'-P-OP2	-5.74	100.53	105.70
1	A	3	DC	C5-C4-N4	5.72	124.20	120.20
1	B	7	DC	C5-C4-N4	5.67	124.17	120.20
1	B	7	DC	O4'-C1'-C2'	-5.67	101.37	105.90
1	A	2	DG	O4'-C1'-C2'	-5.62	101.41	105.90
1	B	6	DG	C2-N3-C4	-5.48	109.16	111.90
1	B	7	DC	N1-C2-N3	-5.13	115.61	119.20
1	A	3	DC	O5'-C5'-C4'	-5.04	98.40	111.00
1	B	7	DC	O4'-C1'-N1	-5.00	104.50	108.00

There are no chirality outliers.

There are no planarity outliers.

5.2 Too-close contacts [i](#)

In the following table, the Non-H and H(model) columns list the number of non-hydrogen atoms and hydrogen atoms in the chain respectively. The H(added) column lists the number of hydrogen atoms added and optimized by MolProbity. The Clashes column lists the number of clashes within the asymmetric unit, whereas Symm-Clashes lists symmetry related clashes.

Mol	Chain	Non-H	H(model)	H(added)	Clashes	Symm-Clashes
1	A	80	0	40	4	0
1	B	80	0	40	2	0
2	B	50	0	48	7	0
3	A	10	0	0	0	0
3	B	17	0	0	2	0
All	All	237	0	128	11	0

The all-atom clashscore is defined as the number of clashes found per 1000 atoms (including hydrogen atoms). The all-atom clashscore for this structure is 33.

All (11) close contacts within the same asymmetric unit are listed below, sorted by their clash magnitude.

Atom-1	Atom-2	Interatomic distance (Å)	Clash overlap (Å)
1:A:1:CBR:H6	1:A:1:CBR:O5'	1.57	1.00
2:B:9:FLD:H3X	3:B:11:HOH:O	1.88	0.74
2:B:9:FLD:HX02	3:B:33:HOH:O	1.95	0.67
2:B:9:FLD:H11	2:B:9:FLD:H1	1.89	0.54
1:A:3:DC:H2''	1:A:4:DG:H5''	1.93	0.51
2:B:9:FLD:H11X	2:B:9:FLD:H1X	1.94	0.50
1:B:5:CBR:BR	2:B:9:FLD:HX92	2.65	0.50
1:A:2:DG:N7	2:B:9:FLD:H221	2.34	0.42
2:B:9:FLD:HX42	2:B:9:FLD:HN1X	1.43	0.42
1:B:7:DC:H2''	1:B:8:DG:O5'	2.21	0.41
1:A:3:DC:H2''	1:A:4:DG:C5'	2.51	0.40

There are no symmetry-related clashes.

5.3 Torsion angles [i](#)

5.3.1 Protein backbone [i](#)

There are no protein molecules in this entry.

5.3.2 Protein sidechains [i](#)

There are no protein molecules in this entry.

5.3.3 RNA [i](#)

There are no RNA molecules in this entry.

5.4 Non-standard residues in protein, DNA, RNA chains [i](#)

2 non-standard protein/DNA/RNA residues are modelled in this entry.

In the following table, the Counts columns list the number of bonds (or angles) for which Mogul statistics could be retrieved, the number of bonds (or angles) that are observed in the model and the number of bonds (or angles) that are defined in the Chemical Component Dictionary. The Link column lists molecule types, if any, to which the group is linked. The Z score for a bond length (or angle) is the number of standard deviations the observed value is removed from the expected value. A bond length (or angle) with $|Z| > 2$ is considered an outlier worth inspection. RMSZ is the root-mean-square of all Z scores of the bond lengths (or angles).

Mol	Type	Chain	Res	Link	Bond lengths			Bond angles		
					Counts	RMSZ	# $ Z > 2$	Counts	RMSZ	# $ Z > 2$
1	CBR	A	1	1	15,18,22	1.83	4 (26%)	18,26,33	2.19	6 (33%)
1	CBR	B	5	1	15,18,22	1.88	4 (26%)	18,26,33	2.23	4 (22%)

In the following table, the Chirals column lists the number of chiral outliers, the number of chiral centers analysed, the number of these observed in the model and the number defined in the Chemical Component Dictionary. Similar counts are reported in the Torsions and Rings columns. '-' means no outliers of that kind were identified.

Mol	Type	Chain	Res	Link	Chirals	Torsions	Rings
1	CBR	A	1	1	-	2/3/18/22	0/2/2/2
1	CBR	B	5	1	-	2/3/18/22	0/2/2/2

All (8) bond length outliers are listed below:

Mol	Chain	Res	Type	Atoms	Z	Observed(Å)	Ideal(Å)
1	A	1	CBR	C6-C5	-3.96	1.31	1.39
1	B	5	CBR	C6-C5	-3.73	1.31	1.39
1	A	1	CBR	BR-C5	-3.41	1.82	1.89
1	A	1	CBR	C4-N3	3.24	1.39	1.35
1	B	5	CBR	O4'-C1'	2.96	1.49	1.42
1	B	5	CBR	BR-C5	-2.96	1.83	1.89

Continued on next page...

Continued from previous page...

Mol	Chain	Res	Type	Atoms	Z	Observed(Å)	Ideal(Å)
1	B	5	CBR	O3'-C3'	-2.78	1.37	1.43
1	A	1	CBR	O4'-C1'	2.06	1.46	1.42

All (10) bond angle outliers are listed below:

Mol	Chain	Res	Type	Atoms	Z	Observed(°)	Ideal(°)
1	B	5	CBR	C2-N3-C4	6.34	123.67	116.02
1	A	1	CBR	C2-N3-C4	6.27	123.59	116.02
1	B	5	CBR	C2'-C1'-N1	4.85	125.45	114.27
1	A	1	CBR	N4-C4-N3	3.04	121.33	117.03
1	A	1	CBR	C2'-C1'-N1	2.83	120.81	114.27
1	A	1	CBR	C5-C6-N1	2.69	123.45	119.97
1	B	5	CBR	O4'-C4'-C3'	-2.61	99.58	105.67
1	A	1	CBR	C4'-O4'-C1'	2.39	115.22	109.45
1	A	1	CBR	BR-C5-C6	2.19	122.38	117.34
1	B	5	CBR	C5-C6-N1	2.16	122.76	119.97

There are no chirality outliers.

All (4) torsion outliers are listed below:

Mol	Chain	Res	Type	Atoms
1	B	5	CBR	O4'-C4'-C5'-O5'
1	A	1	CBR	O4'-C4'-C5'-O5'
1	B	5	CBR	C3'-C4'-C5'-O5'
1	A	1	CBR	C3'-C4'-C5'-O5'

There are no ring outliers.

2 monomers are involved in 2 short contacts:

Mol	Chain	Res	Type	Clashes	Symm-Clashes
1	A	1	CBR	1	0
1	B	5	CBR	1	0

5.5 Carbohydrates [i](#)

There are no carbohydrates in this entry.

5.6 Ligand geometry [i](#)

1 ligand is modelled in this entry.

In the following table, the Counts columns list the number of bonds (or angles) for which Mogul statistics could be retrieved, the number of bonds (or angles) that are observed in the model and the number of bonds (or angles) that are defined in the Chemical Component Dictionary. The Link column lists molecule types, if any, to which the group is linked. The Z score for a bond length (or angle) is the number of standard deviations the observed value is removed from the expected value. A bond length (or angle) with $|Z| > 2$ is considered an outlier worth inspection. RMSZ is the root-mean-square of all Z scores of the bond lengths (or angles).

Mol	Type	Chain	Res	Link	Bond lengths			Bond angles		
					Counts	RMSZ	$\# Z > 2$	Counts	RMSZ	$\# Z > 2$
2	FLD	B	9	-	55,57,57	3.04	21 (38%)	74,80,80	1.58	16 (21%)

In the following table, the Chirals column lists the number of chiral outliers, the number of chiral centers analysed, the number of these observed in the model and the number defined in the Chemical Component Dictionary. Similar counts are reported in the Torsion and Rings columns. '-' means no outliers of that kind were identified.

Mol	Type	Chain	Res	Link	Chirals	Torsions	Rings
2	FLD	B	9	-	-	12/19/19/19	0/8/8/8

All (21) bond length outliers are listed below:

Mol	Chain	Res	Type	Atoms	Z	Observed(Å)	Ideal(Å)
2	B	9	FLD	C6-C13	-8.11	1.27	1.41
2	B	9	FLD	C8-C14	-7.99	1.28	1.41
2	B	9	FLD	C6X-CDX	-7.37	1.29	1.41
2	B	9	FLD	C8X-CEX	-7.32	1.29	1.41
2	B	9	FLD	C11-C15	-5.77	1.30	1.41
2	B	9	FLD	C17-C16	-5.61	1.29	1.43
2	B	9	FLD	CBX-CFX	-5.35	1.31	1.41
2	B	9	FLD	CHX-CGX	-5.34	1.29	1.43
2	B	9	FLD	C15-C16	-3.52	1.34	1.43
2	B	9	FLD	CFX-CGX	-3.50	1.34	1.43
2	B	9	FLD	C4-C12	-3.36	1.33	1.41
2	B	9	FLD	CKX-NLX	3.24	1.57	1.46
2	B	9	FLD	C19-C20	3.20	1.62	1.52
2	B	9	FLD	C4X-CCX	-2.96	1.34	1.41
2	B	9	FLD	C17-C12	-2.72	1.36	1.42
2	B	9	FLD	C5X-CCX	-2.70	1.35	1.41
2	B	9	FLD	C3-N2	-2.68	1.28	1.34
2	B	9	FLD	C5-C12	-2.63	1.35	1.41
2	B	9	FLD	OAX-CIX	-2.36	1.35	1.42
2	B	9	FLD	C20-N21	2.13	1.54	1.46
2	B	9	FLD	CMX-NLX	2.13	1.54	1.46

All (16) bond angle outliers are listed below:

Mol	Chain	Res	Type	Atoms	Z	Observed(°)	Ideal(°)
2	B	9	FLD	C17-C1-N2	-3.60	119.31	121.80
2	B	9	FLD	CHX-CGX-CDX	-3.57	117.13	119.99
2	B	9	FLD	C17-C16-C13	-3.54	117.16	119.99
2	B	9	FLD	CKX-CJX-N2X	3.53	116.69	110.86
2	B	9	FLD	CGX-CHX-CCX	3.36	121.95	119.16
2	B	9	FLD	C16-C17-C12	3.34	121.94	119.16
2	B	9	FLD	C5-C12-C4	-2.95	116.30	123.19
2	B	9	FLD	C4-C12-C17	2.94	123.78	119.56
2	B	9	FLD	C20-C19-N2	-2.74	106.33	110.86
2	B	9	FLD	C19-N2-C1	-2.54	116.41	119.96
2	B	9	FLD	C4X-CCX-CHX	2.47	123.12	119.56
2	B	9	FLD	C5X-CCX-C4X	-2.47	117.42	123.19
2	B	9	FLD	C1X-CHX-CCX	-2.33	115.19	117.65
2	B	9	FLD	C3-N2-C1	2.25	123.60	120.83
2	B	9	FLD	C3X-N2X-C1X	2.12	123.43	120.83
2	B	9	FLD	C3-C4-C12	-2.03	117.72	120.08

There are no chirality outliers.

All (12) torsion outliers are listed below:

Mol	Chain	Res	Type	Atoms
2	B	9	FLD	C23-C22-N21-C20
2	B	9	FLD	N21-C22-C23-C24
2	B	9	FLD	NLX-CMX-CNX-COX
2	B	9	FLD	C23-C24-COX-CNX
2	B	9	FLD	C22-C23-C24-COX
2	B	9	FLD	CMX-CNX-COX-C24
2	B	9	FLD	CKX-CJX-N2X-C1X
2	B	9	FLD	CKX-CJX-N2X-C3X
2	B	9	FLD	CJX-CKX-NLX-CMX
2	B	9	FLD	CNX-CMX-NLX-CKX
2	B	9	FLD	C20-C19-N2-C1
2	B	9	FLD	C20-C19-N2-C3

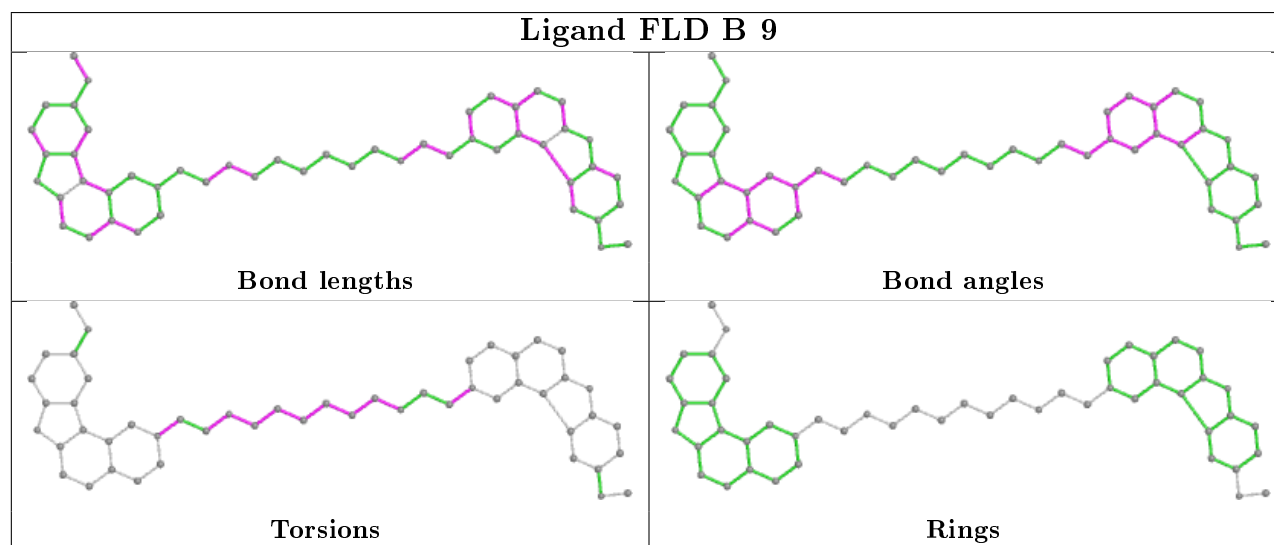
There are no ring outliers.

1 monomer is involved in 7 short contacts:

Mol	Chain	Res	Type	Clashes	Symm-Clashes
2	B	9	FLD	7	0

The following is a two-dimensional graphical depiction of Mogul quality analysis of bond lengths,

bond angles, torsion angles, and ring geometry for all instances of the Ligand of Interest. In addition, ligands with molecular weight > 250 and outliers as shown on the validation Tables will also be included. For torsion angles, if less than 5% of the Mogul distribution of torsion angles is within 10 degrees of the torsion angle in question, then that torsion angle is considered an outlier. Any bond that is central to one or more torsion angles identified as an outlier by Mogul will be highlighted in the graph. For rings, the root-mean-square deviation (RMSD) between the ring in question and similar rings identified by Mogul is calculated over all ring torsion angles. If the average RMSD is greater than 60 degrees and the minimal RMSD between the ring in question and any Mogul-identified rings is also greater than 60 degrees, then that ring is considered an outlier. The outliers are highlighted in purple. The color gray indicates Mogul did not find sufficient equivalents in the CSD to analyse the geometry.



5.7 Other polymers [i](#)

There are no such residues in this entry.

5.8 Polymer linkage issues [i](#)

There are no chain breaks in this entry.

6 Fit of model and data ⓘ

6.1 Protein, DNA and RNA chains ⓘ

EDS was not executed - this section is therefore empty.

6.2 Non-standard residues in protein, DNA, RNA chains ⓘ

EDS was not executed - this section is therefore empty.

6.3 Carbohydrates ⓘ

EDS was not executed - this section is therefore empty.

6.4 Ligands ⓘ

EDS was not executed - this section is therefore empty.

6.5 Other polymers ⓘ

EDS was not executed - this section is therefore empty.