



Full wwPDB X-ray Structure Validation Report ⓘ

Aug 7, 2020 – 09:08 PM BST

PDB ID : 2A1D
Title : Staphylocoagulase bound to bovine thrombin
Authors : Friedrich, R.; Panizzi, P.; Kawabata, S.; Bode, W.; Bock, P.E.; Fuentes-Prior, P.
Deposited on : 2005-06-20
Resolution : 3.50 Å(reported)

This is a Full wwPDB X-ray Structure Validation Report for a publicly released PDB entry.

We welcome your comments at validation@mail.wwpdb.org

A user guide is available at

<https://www.wwpdb.org/validation/2017/XrayValidationReportHelp>

with specific help available everywhere you see the ⓘ symbol.

The following versions of software and data (see [references ⓘ](#)) were used in the production of this report:

MolProbity : 4.02b-467
Mogul : 1.8.5 (274361), CSD as541be (2020)
Xtriage (Phenix) : **NOT EXECUTED**
EDS : **NOT EXECUTED**
buster-report : 1.1.7 (2018)
Percentile statistics : 20191225.v01 (using entries in the PDB archive December 25th 2019)
Ideal geometry (proteins) : Engh & Huber (2001)
Ideal geometry (DNA, RNA) : Parkinson et al. (1996)
Validation Pipeline (wwPDB-VP) : 2.13.1

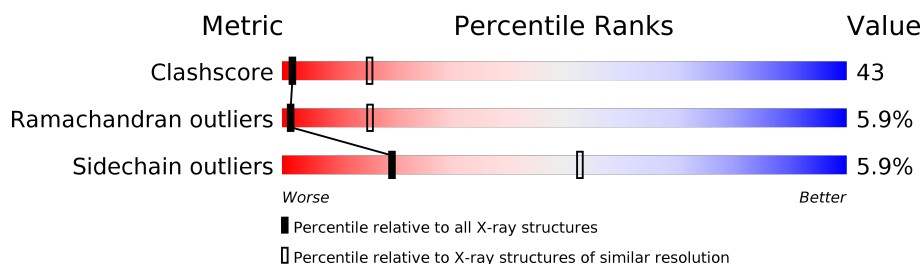
1 Overall quality at a glance

The following experimental techniques were used to determine the structure:

X-RAY DIFFRACTION

The reported resolution of this entry is 3.50 Å.

Percentile scores (ranging between 0-100) for global validation metrics of the entry are shown in the following graphic. The table shows the number of entries on which the scores are based.



Metric	Whole archive (#Entries)	Similar resolution (#Entries, resolution range(Å))
Clashscore	141614	1036 (3.58-3.42)
Ramachandran outliers	138981	1005 (3.58-3.42)
Sidechain outliers	138945	1006 (3.58-3.42)

The table below summarises the geometric issues observed across the polymeric chains and their fit to the electron density. The red, orange, yellow and green segments on the lower bar indicate the fraction of residues that contain outliers for ≥ 3 , 2, 1 and 0 types of geometric quality criteria respectively. A grey segment represents the fraction of residues that are not modelled. The numeric value for each fraction is indicated below the corresponding segment, with a dot representing fractions $\leq 5\%$.

Note EDS was not executed.

Mol	Chain	Length	Quality of chain
1	A	41	37% 51% 12%
1	E	41	34% 54% 12%
2	B	259	33% 58% 9%
2	F	259	33% 58% 9%
3	D	329	31% 50% 5% 14%
3	H	329	31% 50% . . 14%

The following table lists non-polymeric compounds, carbohydrate monomers and non-standard residues in protein, DNA, RNA chains that are outliers for geometric or electron-density-fit criteria:

Mol	Type	Chain	Res	Chirality	Geometry	Clashes	Electron density
4	0G6	B	500	X	-	-	-
4	0G6	F	600	X	-	-	-
5	NAG	B	700	X	-	-	-

2 Entry composition

There are 6 unique types of molecules in this entry. The entry contains 9634 atoms, of which 0 are hydrogens and 0 are deuteriums.

In the tables below, the ZeroOcc column contains the number of atoms modelled with zero occupancy, the AltConf column contains the number of residues with at least one atom in alternate conformation and the Trace column contains the number of residues modelled with at most 2 atoms.

- Molecule 1 is a protein called thrombin.

Mol	Chain	Residues	Atoms					ZeroOcc	AltConf	Trace
1	A	41	Total	C	N	O	S	0	0	0
			338	214	55	68	1			
1	E	41	Total	C	N	O	S	0	0	0
			338	214	55	68	1			

- Molecule 2 is a protein called thrombin.

Mol	Chain	Residues	Atoms					ZeroOcc	AltConf	Trace
2	B	259	Total	C	N	O	S	3	0	0
			2094	1337	376	369	12			
2	F	259	Total	C	N	O	S	0	0	0
			2094	1337	376	369	12			

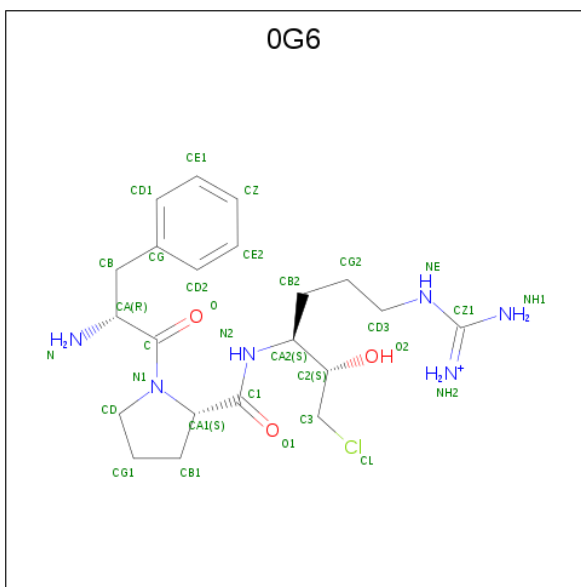
- Molecule 3 is a protein called Staphylocoagulase.

Mol	Chain	Residues	Atoms					ZeroOcc	AltConf	Trace
3	D	282	Total	C	N	O	S	0	0	0
			2347	1483	387	472	5			
3	H	282	Total	C	N	O	S	0	0	0
			2347	1483	387	472	5			

There are 4 discrepancies between the modelled and reference sequences:

Chain	Residue	Modelled	Actual	Comment	Reference
D	0	MET	-	initiating methionine	UNP P17855
D	?	-	GLY	SEE REMARK 999	UNP P17855
H	0	MET	-	initiating methionine	UNP P17855
H	?	-	GLY	SEE REMARK 999	UNP P17855

- Molecule 4 is D-phenylalanyl-N-[(2S,3S)-6-{[amino(iminio)methyl]amino}-1-chloro-2-hydroxyhexan-3-yl]-L-prolinamide (three-letter code: 0G6) (formula: C₂₁H₃₄ClN₆O₃).



Mol	Chain	Residues	Atoms				ZeroOcc	AltConf
4	B	1	Total	C	N	O	0	0
			30	21	6	3		
4	F	1	Total	C	N	O	0	0
			30	21	6	3		

- Molecule 5 is 2-acetamido-2-deoxy-beta-D-glucopyranose (three-letter code: NAG) (formula: $C_8H_{15}NO_6$).



Mol	Chain	Residues	Atoms				ZeroOcc	AltConf
5	B	1	Total	C	N	O	0	0
			14	8	1	5		

- Molecule 6 is SODIUM ION (three-letter code: NA) (formula: Na).

Mol	Chain	Residues	Atoms		ZeroOcc	AltConf
6	B	1	Total	Na	0	0
			1	1		
6	F	1	Total	Na	0	0
			1	1		

3 Residue-property plots

These plots are drawn for all protein, RNA, DNA and oligosaccharide chains in the entry. The first graphic for a chain summarises the proportions of the various outlier classes displayed in the second graphic. The second graphic shows the sequence view annotated by issues in geometry. Residues are color-coded according to the number of geometric quality criteria for which they contain at least one outlier: green = 0, yellow = 1, orange = 2 and red = 3 or more. Stretches of 2 or more consecutive residues without any outlier are shown as a green connector. Residues present in the sample, but not in the model, are shown in grey.

Note EDS was not executed.

- Molecule 1: thrombin

Chain A: 



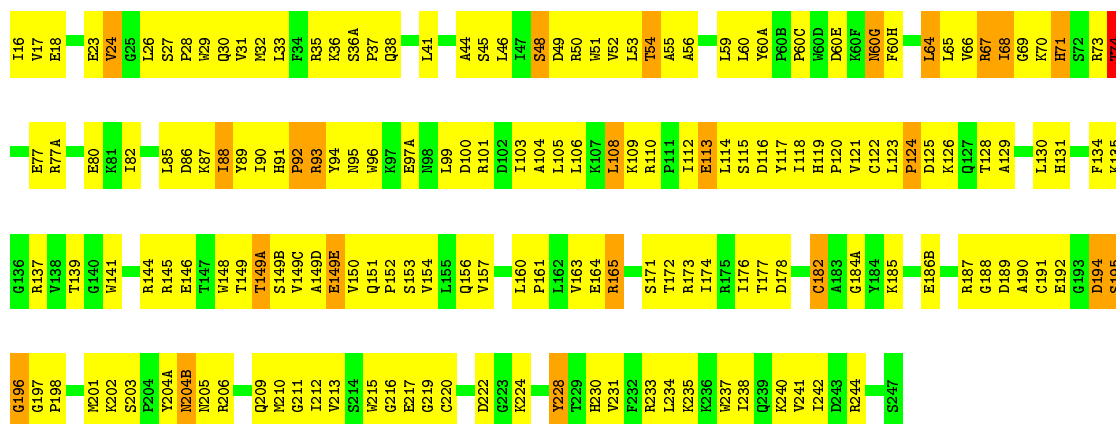
- Molecule 1: thrombin

Chain E: 



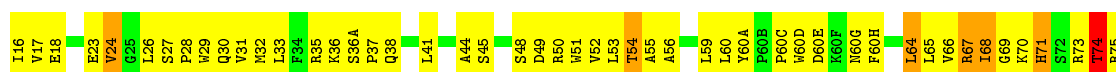
- Molecule 2: thrombin

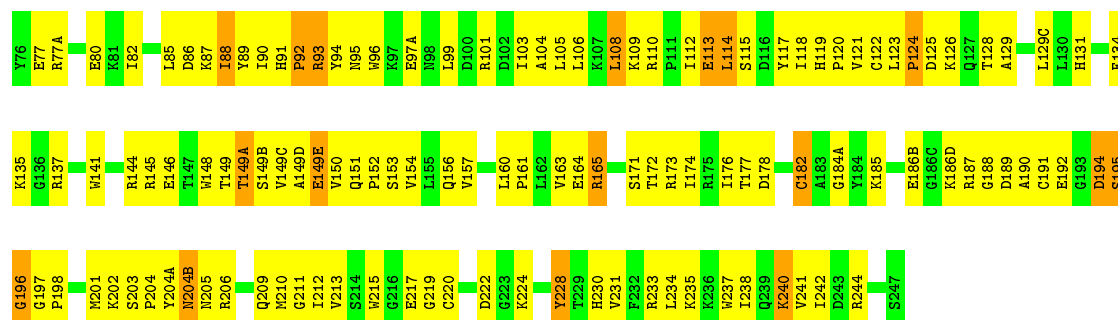
Chain B: 



- Molecule 2: thrombin

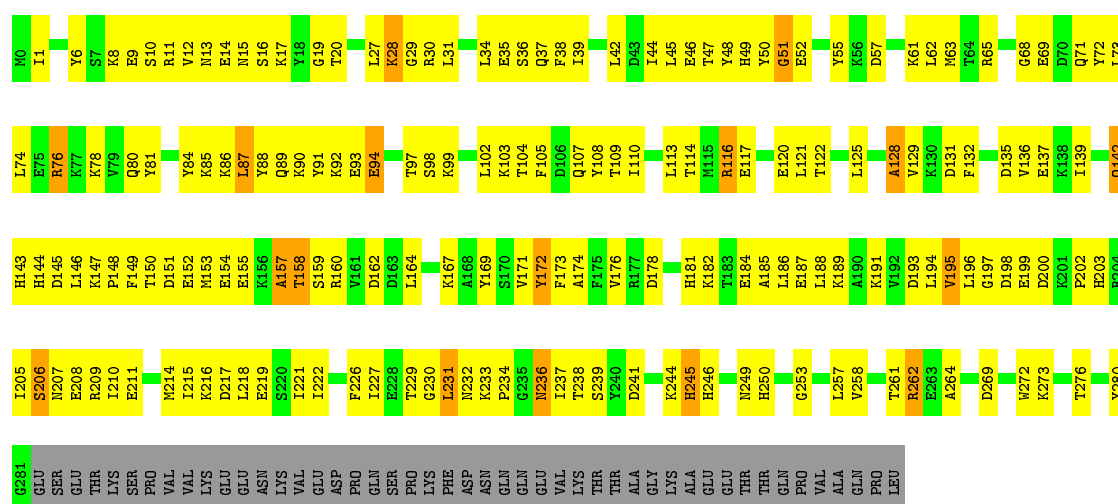
Chain F: 





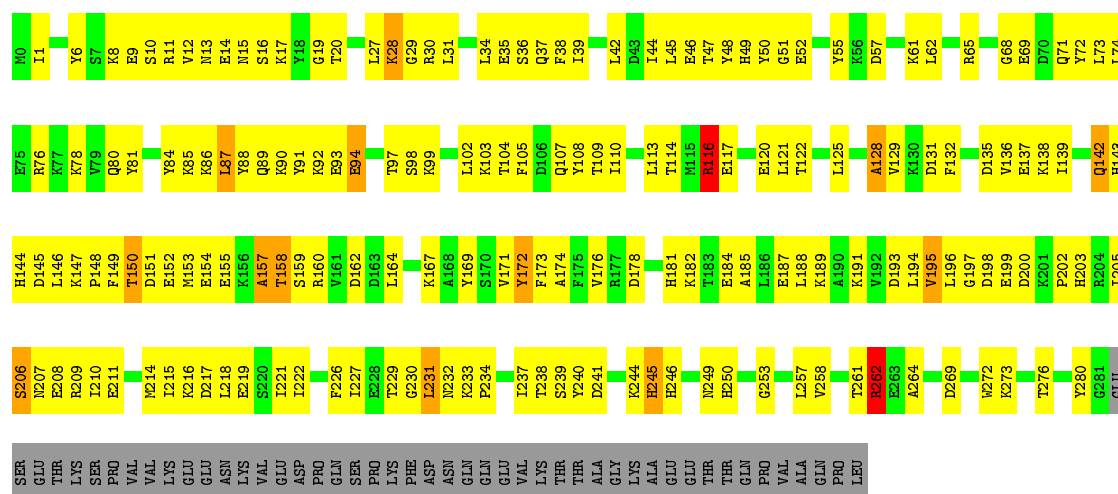
• Molecule 3: Staphylocoagulase

Chain D: 31% 50% 5% 14%



• Molecule 3: Staphylocoagulase

Chain H: 31% 50% 14%



4 Data and refinement statistics

Xtriage (Phenix) and EDS were not executed - this section is therefore incomplete.

Property	Value	Source
Space group	C 1 2 1	Depositor
Cell constants a, b, c, α , β , γ	183.78Å 102.54Å 134.04Å 90.00° 129.14° 90.00°	Depositor
Resolution (Å)	31.69 – 3.50	Depositor
% Data completeness (in resolution range)	86.7 (31.69-3.50)	Depositor
R_{merge}	(Not available)	Depositor
R_{sym}	(Not available)	Depositor
Refinement program	CNS 1.1	Depositor
R, R_{free}	0.233 , 0.306	Depositor
Estimated twinning fraction	No twinning to report.	Xtriage
Total number of atoms	9634	wwPDB-VP
Average B, all atoms (Å ²)	63.0	wwPDB-VP

5 Model quality

5.1 Standard geometry

Bond lengths and bond angles in the following residue types are not validated in this section: 0G6, NA, NAG

The Z score for a bond length (or angle) is the number of standard deviations the observed value is removed from the expected value. A bond length (or angle) with $|Z| > 5$ is considered an outlier worth inspection. RMSZ is the root-mean-square of all Z scores of the bond lengths (or angles).

Mol	Chain	Bond lengths		Bond angles	
		RMSZ	$\# Z > 5$	RMSZ	$\# Z > 5$
1	A	0.42	0/344	0.59	0/456
1	E	0.43	0/344	0.59	0/456
2	B	0.40	0/2148	0.69	0/2905
2	F	0.39	0/2148	0.68	0/2905
3	D	0.39	0/2389	0.79	6/3206 (0.2%)
3	H	0.39	0/2389	0.78	6/3206 (0.2%)
All	All	0.40	0/9762	0.73	12/13134 (0.1%)

There are no bond length outliers.

All (12) bond angle outliers are listed below:

Mol	Chain	Res	Type	Atoms	Z	Observed(°)	Ideal(°)
3	D	262	ARG	NE-CZ-NH1	-15.01	112.80	120.30
3	H	262	ARG	NE-CZ-NH2	-14.67	112.96	120.30
3	D	262	ARG	NE-CZ-NH2	14.57	127.58	120.30
3	H	262	ARG	NE-CZ-NH1	13.87	127.23	120.30
3	D	116	ARG	NE-CZ-NH2	-12.50	114.05	120.30
3	H	116	ARG	NE-CZ-NH1	-12.30	114.15	120.30
3	H	116	ARG	NE-CZ-NH2	12.23	126.42	120.30
3	D	116	ARG	NE-CZ-NH1	11.98	126.29	120.30
3	D	262	ARG	CD-NE-CZ	7.69	134.36	123.60
3	H	262	ARG	CD-NE-CZ	7.20	133.68	123.60
3	H	116	ARG	CD-NE-CZ	6.05	132.07	123.60
3	D	116	ARG	CD-NE-CZ	5.66	131.52	123.60

There are no chirality outliers.

There are no planarity outliers.

5.2 Too-close contacts ⓘ

In the following table, the Non-H and H(model) columns list the number of non-hydrogen atoms and hydrogen atoms in the chain respectively. The H(added) column lists the number of hydrogen atoms added and optimized by MolProbity. The Clashes column lists the number of clashes within the asymmetric unit, whereas Symm-Clashes lists symmetry related clashes.

Mol	Chain	Non-H	H(model)	H(added)	Clashes	Symm-Clashes
1	A	338	0	319	38	0
1	E	338	0	319	38	0
2	B	2094	0	2095	219	0
2	F	2094	0	2096	209	0
3	D	2347	0	2311	183	0
3	H	2347	0	2311	178	0
4	B	30	0	30	3	0
4	F	30	0	30	3	0
5	B	14	0	13	4	0
6	B	1	0	0	0	0
6	F	1	0	0	0	0
All	All	9634	0	9524	817	0

The all-atom clashscore is defined as the number of clashes found per 1000 atoms (including hydrogen atoms). The all-atom clashscore for this structure is 43.

All (817) close contacts within the same asymmetric unit are listed below, sorted by their clash magnitude.

Atom-1	Atom-2	Interatomic distance (Å)	Clash overlap (Å)
2:F:172:THR:HG22	2:F:174:ILE:H	1.14	1.06
2:B:172:THR:HG22	2:B:174:ILE:H	1.19	1.04
2:F:31:VAL:HB	2:F:44:ALA:HB3	1.46	0.97
2:F:211:GLY:HA2	2:F:231:VAL:HG23	1.46	0.97
2:B:31:VAL:HB	2:B:44:ALA:HB3	1.47	0.93
2:B:73:ARG:HD3	2:B:152:PRO:O	1.68	0.93
2:B:211:GLY:HA2	2:B:231:VAL:HG23	1.50	0.93
1:E:14(K):ILE:HD11	1:E:15:ARG:HB2	1.50	0.93
2:F:73:ARG:HD3	2:F:152:PRO:O	1.67	0.92
1:E:14(J):TYR:HA	2:F:134:PHE:CE1	2.04	0.92
3:D:92:LYS:HE3	3:D:98:SER:HB2	1.52	0.92
3:H:187:GLU:O	3:H:191:LYS:HG3	1.70	0.90
3:H:149:PHE:HD2	3:H:154:GLU:HA	1.35	0.90
1:A:14(K):ILE:HD11	1:A:15:ARG:HB2	1.53	0.88
3:D:149:PHE:HD2	3:D:154:GLU:HA	1.37	0.88
3:H:45:LEU:HD21	3:H:62:LEU:HD23	1.56	0.87

Continued on next page...

Continued from previous page...

Atom-1	Atom-2	Interatomic distance (Å)	Clash overlap (Å)
3:H:92:LYS:HE3	3:H:98:SER:HB2	1.54	0.87
3:H:36:SER:HA	3:H:39:ILE:HD12	1.57	0.86
3:D:45:LEU:HD21	3:D:62:LEU:HD23	1.57	0.86
3:D:187:GLU:O	3:D:191:LYS:HG3	1.76	0.86
2:B:28:PRO:HB2	2:B:119:HIS:H	1.42	0.85
2:F:28:PRO:HB2	2:F:119:HIS:H	1.40	0.85
2:B:52:VAL:HG13	2:B:106:LEU:HB2	1.59	0.85
2:B:149(D):ALA:O	2:B:150:VAL:HG23	1.76	0.85
2:F:52:VAL:HG13	2:F:106:LEU:HB2	1.59	0.83
2:B:119:HIS:CD2	2:B:120:PRO:HD2	2.14	0.82
2:F:149(C):VAL:HG11	3:H:42:LEU:HD12	1.60	0.82
2:F:230:HIS:O	2:F:234:LEU:HD23	1.79	0.82
2:F:172:THR:HG22	2:F:174:ILE:N	1.94	0.82
2:B:230:HIS:O	2:B:234:LEU:HD23	1.80	0.81
1:A:14(A):GLN:HG2	2:B:23:GLU:CD	1.98	0.81
2:F:149(D):ALA:O	2:F:150:VAL:HG23	1.78	0.81
1:A:1(K):ASN:HD22	1:A:1(I):LYS:HG3	1.46	0.81
2:B:112:ILE:HD12	2:B:118:ILE:HG21	1.61	0.81
3:D:36:SER:HA	3:D:39:ILE:HD12	1.61	0.80
2:F:119:HIS:CD2	2:F:120:PRO:HD2	2.16	0.80
2:F:112:ILE:HD12	2:F:118:ILE:HG21	1.63	0.80
2:B:149(C):VAL:HG11	3:D:42:LEU:HD12	1.64	0.80
3:H:113:LEU:HD12	3:H:117:GLU:OE2	1.84	0.78
1:E:1(K):ASN:HD22	1:E:1(I):LYS:HG3	1.48	0.78
1:A:4:ARG:NH1	2:B:26:LEU:HD12	1.99	0.77
2:B:52:VAL:CG1	2:B:106:LEU:HB2	2.14	0.77
3:D:113:LEU:HD12	3:D:117:GLU:OE2	1.85	0.76
2:F:52:VAL:CG1	2:F:106:LEU:HB2	2.16	0.76
2:B:172:THR:HG22	2:B:174:ILE:N	1.99	0.75
1:A:11:GLN:HE21	1:A:11:GLN:N	1.85	0.75
3:H:241:ASP:HB3	3:H:244:LYS:HB2	1.68	0.75
2:B:65:LEU:O	2:B:65:LEU:HD12	1.87	0.75
1:E:14(G):PHE:HA	1:E:14(J):TYR:HD2	1.52	0.74
3:D:241:ASP:HB3	3:D:244:LYS:HB2	1.68	0.74
1:A:14(G):PHE:HA	1:A:14(J):TYR:CD2	2.22	0.74
1:E:14(G):PHE:HA	1:E:14(J):TYR:CD2	2.22	0.74
3:D:145:ASP:HB2	3:D:208:GLU:HB3	1.70	0.73
1:A:14(J):TYR:HA	2:B:134:PHE:CE1	2.23	0.73
2:F:55:ALA:H	2:F:196:GLY:HA2	1.54	0.73
1:A:14(G):PHE:HA	1:A:14(J):TYR:HD2	1.54	0.73
2:F:65:LEU:O	2:F:65:LEU:HD12	1.89	0.73

Continued on next page...

Continued from previous page...

Atom-1	Atom-2	Interatomic distance (Å)	Clash overlap (Å)
2:F:87:LYS:HE3	2:F:89:TYR:CE2	2.24	0.73
1:E:14(A):GLN:HG2	2:F:23:GLU:CD	2.08	0.73
3:H:150:THR:H	3:H:153:MET:HB2	1.53	0.73
3:D:150:THR:H	3:D:153:MET:HB2	1.54	0.72
3:H:169:TYR:HE1	3:H:189:LYS:HE2	1.53	0.72
2:F:87:LYS:HE3	2:F:89:TYR:HE2	1.53	0.72
2:B:55:ALA:H	2:B:196:GLY:HA2	1.54	0.72
3:D:145:ASP:O	3:D:207:ASN:HB2	1.90	0.72
1:E:4:ARG:NH1	2:F:26:LEU:HD12	2.05	0.72
1:E:11:GLN:N	1:E:11:GLN:HE21	1.86	0.71
3:D:169:TYR:HE1	3:D:189:LYS:HE2	1.54	0.71
2:B:87:LYS:HE3	2:B:89:TYR:HE2	1.56	0.71
3:D:258:VAL:O	3:D:262:ARG:HG3	1.90	0.71
2:B:59:LEU:HD13	2:B:88:ILE:CD1	2.20	0.71
2:B:87:LYS:HE3	2:B:89:TYR:CE2	2.25	0.71
3:H:128:ALA:O	3:H:131:ASP:HB2	1.90	0.70
2:F:59:LEU:HD13	2:F:88:ILE:CD1	2.21	0.70
2:F:95:ASN:HD21	2:F:97(A):GLU:HB3	1.56	0.70
3:D:11:ARG:HE	3:D:65:ARG:CZ	2.05	0.70
3:D:128:ALA:O	3:D:131:ASP:HB2	1.91	0.70
3:H:145:ASP:O	3:H:207:ASN:HB2	1.92	0.70
2:B:131:HIS:HB2	2:B:134:PHE:CE2	2.27	0.70
1:E:14(J):TYR:HA	2:F:134:PHE:HE1	1.54	0.69
3:H:11:ARG:HE	3:H:65:ARG:CZ	2.04	0.69
3:H:145:ASP:HB2	3:H:208:GLU:HB3	1.75	0.69
3:H:35:GLU:O	3:H:39:ILE:HG13	1.92	0.69
1:E:15:ARG:HB3	1:E:15:ARG:NH1	2.08	0.69
2:F:80:GLU:OE2	2:F:82:ILE:HD11	1.93	0.68
3:D:14:GLU:HG3	3:D:15:ASN:H	1.58	0.68
2:F:172:THR:CG2	2:F:174:ILE:HG13	2.23	0.68
2:F:161:PRO:HG2	2:F:184(A):GLY:O	1.92	0.68
2:B:80:GLU:OE2	2:B:82:ILE:HD11	1.92	0.68
2:F:131:HIS:HB2	2:F:134:PHE:CE2	2.28	0.68
2:B:53:LEU:HD23	2:B:209:GLN:HE22	1.59	0.68
2:B:238:ILE:O	2:B:241:VAL:HG22	1.93	0.68
3:D:35:GLU:O	3:D:39:ILE:HG13	1.93	0.68
2:F:238:ILE:O	2:F:241:VAL:HG22	1.94	0.67
2:B:95:ASN:HD21	2:B:97(A):GLU:HB3	1.58	0.67
3:H:246:HIS:H	3:H:250:HIS:HB2	1.59	0.67
1:A:15:ARG:NH1	1:A:15:ARG:HB3	2.09	0.67
3:D:246:HIS:H	3:D:250:HIS:HB2	1.58	0.67

Continued on next page...

Continued from previous page...

Atom-1	Atom-2	Interatomic distance (Å)	Clash overlap (Å)
3:D:191:LYS:O	3:D:195:VAL:HG22	1.95	0.66
3:D:11:ARG:HH21	3:D:11:ARG:HG2	1.60	0.66
3:H:110:ILE:HD12	3:H:110:ILE:H	1.61	0.66
2:F:149(B):SER:HB2	3:H:35:GLU:OE1	1.96	0.66
3:H:80:GLN:HE22	3:H:110:ILE:HG23	1.60	0.66
3:H:110:ILE:HD12	3:H:110:ILE:N	2.11	0.66
2:F:115:SER:OG	2:F:118:ILE:HD12	1.96	0.65
3:H:14:GLU:HG3	3:H:15:ASN:H	1.59	0.65
2:F:53:LEU:HD23	2:F:209:GLN:HE22	1.61	0.65
3:D:142:GLN:HG2	3:D:142:GLN:O	1.95	0.65
3:D:110:ILE:N	3:D:110:ILE:HD12	2.12	0.65
3:D:17:LYS:HB3	3:D:117:GLU:OE1	1.97	0.65
2:B:18:GLU:HG3	2:B:187:ARG:HG3	1.79	0.65
2:B:91:HIS:ND1	2:B:92:PRO:HD2	2.11	0.65
3:D:10:SER:OG	3:D:12:VAL:HG23	1.97	0.65
3:H:241:ASP:HB3	3:H:244:LYS:CB	2.27	0.65
2:B:152:PRO:HG3	2:B:156:GLN:HG2	1.78	0.64
2:F:91:HIS:ND1	2:F:92:PRO:HD2	2.12	0.64
2:B:112:ILE:CD1	2:B:118:ILE:HG21	2.28	0.64
2:B:60(G):ASN:HB2	5:B:700:NAG:H83	1.79	0.64
3:D:241:ASP:HB3	3:D:244:LYS:CB	2.27	0.64
3:D:10:SER:HB2	3:D:68:GLY:O	1.98	0.64
3:D:88:TYR:O	3:D:91:TYR:HB3	1.98	0.64
3:H:74:LEU:HG	3:H:78:LYS:HE2	1.79	0.64
2:F:77(A):ARG:NH1	3:H:216:LYS:HB2	2.12	0.64
3:D:80:GLN:HE22	3:D:110:ILE:HG23	1.63	0.64
2:B:161:PRO:HG2	2:B:184(A):GLY:O	1.98	0.64
3:H:10:SER:HB2	3:H:68:GLY:O	1.97	0.64
3:H:241:ASP:CB	3:H:244:LYS:HE3	2.28	0.64
3:H:17:LYS:HB3	3:H:117:GLU:OE1	1.98	0.64
3:H:218:LEU:O	3:H:222:ILE:HG13	1.98	0.64
2:B:99:LEU:HD11	4:B:500:OG6:HB21	1.78	0.63
3:D:110:ILE:H	3:D:110:ILE:HD12	1.63	0.63
3:D:135:ASP:O	3:D:139:ILE:HG13	1.99	0.63
3:D:178:ASP:HB2	3:D:262:ARG:HH22	1.63	0.63
3:H:90:LYS:O	3:H:90:LYS:HD2	1.98	0.63
2:B:125:ASP:HB3	2:B:128:THR:CB	2.29	0.63
2:F:18:GLU:HG3	2:F:187:ARG:HG3	1.79	0.63
2:B:115:SER:OG	2:B:118:ILE:HD12	1.97	0.63
2:F:152:PRO:HG3	2:F:156:GLN:HG2	1.81	0.63
2:B:67:ARG:HB3	2:B:67:ARG:HH11	1.63	0.63

Continued on next page...

Continued from previous page...

Atom-1	Atom-2	Interatomic distance (Å)	Clash overlap (Å)
3:D:218:LEU:O	3:D:222:ILE:HG13	1.98	0.63
3:H:88:TYR:O	3:H:91:TYR:HB3	1.99	0.63
2:F:151:GLN:HB3	2:F:152:PRO:HD2	1.81	0.63
3:H:172:TYR:CD1	3:H:189:LYS:HB2	2.34	0.63
2:B:195:SER:O	2:B:197:GLY:N	2.33	0.62
2:B:77(A):ARG:NH1	3:D:216:LYS:HB2	2.13	0.62
1:E:7:PHE:HA	1:E:12:VAL:HB	1.81	0.62
3:D:103:LYS:HA	3:D:107:GLN:OE1	1.99	0.62
2:B:217:GLU:HB2	2:B:224:LYS:HD3	1.81	0.62
3:D:11:ARG:HH11	3:D:65:ARG:HD3	1.64	0.62
3:D:90:LYS:O	3:D:90:LYS:HD2	1.99	0.62
3:H:258:VAL:O	3:H:262:ARG:HG3	1.99	0.62
3:D:12:VAL:CG2	3:D:121:LEU:HD23	2.30	0.62
2:F:56:ALA:HB2	2:F:103:ILE:O	1.99	0.62
1:E:11:GLN:N	1:E:11:GLN:NE2	2.48	0.62
2:B:151:GLN:HB3	2:B:152:PRO:HD2	1.81	0.62
2:F:67:ARG:HH11	2:F:67:ARG:HB3	1.65	0.62
3:H:191:LYS:O	3:H:195:VAL:HG22	2.00	0.62
1:A:11:GLN:NE2	1:A:11:GLN:N	2.47	0.62
3:D:169:TYR:CE1	3:D:189:LYS:HE2	2.35	0.62
3:D:245:HIS:HA	3:D:250:HIS:HB2	1.81	0.62
2:B:172:THR:CG2	2:B:174:ILE:HG13	2.30	0.61
3:H:157:ALA:O	3:H:160:ARG:N	2.33	0.61
3:H:169:TYR:CE1	3:H:189:LYS:HE2	2.34	0.61
3:H:245:HIS:HA	3:H:250:HIS:HB2	1.81	0.61
3:D:12:VAL:HG21	3:D:121:LEU:CD2	2.31	0.61
1:E:14(A):GLN:HG2	2:F:23:GLU:OE2	2.00	0.61
3:H:11:ARG:HH11	3:H:65:ARG:HD3	1.65	0.61
3:H:80:GLN:NE2	3:H:110:ILE:HG23	2.14	0.61
3:D:74:LEU:HG	3:D:78:LYS:HE2	1.82	0.61
2:B:53:LEU:HD12	2:B:105:LEU:HD12	1.82	0.61
2:F:53:LEU:HD12	2:F:105:LEU:HD12	1.81	0.61
3:D:104:THR:OG1	3:D:107:GLN:NE2	2.33	0.61
2:F:99:LEU:HD11	4:F:600:OG6:HB21	1.82	0.61
1:A:1(K):ASN:HD22	1:A:1(I):LYS:CG	2.14	0.61
1:A:7:PHE:HA	1:A:12:VAL:HB	1.82	0.61
2:F:67:ARG:HH12	2:F:70:LYS:NZ	1.98	0.61
3:H:142:GLN:HG2	3:H:142:GLN:O	1.99	0.61
3:D:12:VAL:HG21	3:D:121:LEU:HD23	1.84	0.60
2:F:125:ASP:HB3	2:F:128:THR:CB	2.31	0.60
3:H:178:ASP:HB2	3:H:262:ARG:HH22	1.66	0.60

Continued on next page...

Continued from previous page...

Atom-1	Atom-2	Interatomic distance (Å)	Clash overlap (Å)
2:F:244:ARG:HG2	2:F:244:ARG:HH11	1.67	0.60
2:B:244:ARG:HH11	2:B:244:ARG:HG2	1.65	0.60
3:D:172:TYR:CD1	3:D:189:LYS:HB2	2.37	0.60
3:D:157:ALA:O	3:D:160:ARG:N	2.34	0.60
2:F:191:CYS:O	2:F:194:ASP:HB2	2.02	0.60
2:B:125:ASP:HB3	2:B:128:THR:OG1	2.02	0.60
2:F:217:GLU:HB2	2:F:224:LYS:HD3	1.83	0.60
2:F:35:ARG:HB2	2:F:41:LEU:HD11	1.83	0.60
2:F:77(A):ARG:HH12	3:H:216:LYS:HB2	1.65	0.60
3:H:174:ALA:HA	3:H:258:VAL:HG13	1.83	0.60
3:D:241:ASP:CB	3:D:244:LYS:HE3	2.30	0.60
3:H:135:ASP:O	3:H:139:ILE:HG13	2.01	0.60
3:H:104:THR:OG1	3:H:107:GLN:NE2	2.35	0.59
2:B:149(B):SER:HB2	3:D:35:GLU:OE1	2.02	0.59
3:H:87:LEU:O	3:H:87:LEU:HG	2.02	0.59
2:F:112:ILE:CD1	2:F:118:ILE:HG21	2.31	0.59
2:F:67:ARG:HH12	2:F:70:LYS:HZ3	1.51	0.59
3:H:103:LYS:HA	3:H:107:GLN:OE1	2.02	0.59
3:H:11:ARG:HH21	3:H:11:ARG:HG2	1.65	0.59
3:D:87:LEU:HG	3:D:87:LEU:O	2.03	0.59
2:F:164:GLU:CD	2:F:164:GLU:H	2.06	0.59
2:B:35:ARG:HB2	2:B:41:LEU:HD11	1.84	0.59
3:D:143:HIS:CB	3:D:146:LEU:HD12	2.33	0.59
3:D:174:ALA:HA	3:D:258:VAL:HG13	1.85	0.59
2:B:191:CYS:O	2:B:194:ASP:HB2	2.03	0.59
2:F:125:ASP:HB3	2:F:128:THR:OG1	2.03	0.59
2:F:195:SER:O	2:F:197:GLY:N	2.36	0.59
2:F:172:THR:HG22	2:F:173:ARG:N	2.17	0.59
3:H:12:VAL:CG2	3:H:121:LEU:HD23	2.33	0.58
3:D:80:GLN:NE2	3:D:110:ILE:HG23	2.18	0.58
3:D:78:LYS:HG2	3:D:105:PHE:CE1	2.38	0.58
2:B:16:ILE:HD13	2:B:190:ALA:HA	1.84	0.58
3:H:211:GLU:O	3:H:215:ILE:HG13	2.02	0.58
2:B:195:SER:O	2:B:213:VAL:HB	2.03	0.58
3:H:178:ASP:HB2	3:H:262:ARG:NH2	2.19	0.58
3:D:184:GLU:OE1	3:D:184:GLU:N	2.34	0.58
3:H:6:TYR:HD2	3:H:8:LYS:HZ2	1.50	0.58
3:D:104:THR:H	3:D:107:GLN:CD	2.08	0.57
3:H:78:LYS:HG2	3:H:105:PHE:CE1	2.40	0.57
2:B:56:ALA:HB2	2:B:103:ILE:O	2.03	0.57
1:A:1(A):ASP:O	1:A:1:CYS:O	2.22	0.57

Continued on next page...

Continued from previous page...

Atom-1	Atom-2	Interatomic distance (Å)	Clash overlap (Å)
3:H:143:HIS:CB	3:H:146:LEU:HD12	2.35	0.57
2:B:149(D):ALA:O	2:B:150:VAL:N	2.37	0.57
2:B:176:ILE:HG22	2:B:177:THR:N	2.19	0.57
1:E:8:GLU:O	1:E:10:LYS:N	2.33	0.57
1:E:14(J):TYR:HA	2:F:134:PHE:CD1	2.38	0.57
2:F:60:LEU:C	2:F:60:LEU:HD23	2.23	0.57
3:H:215:ILE:O	3:H:219:GLU:N	2.32	0.57
3:H:50:TYR:HA	3:H:55:TYR:CD1	2.40	0.57
2:F:53:LEU:HD11	2:F:103:ILE:HD11	1.87	0.57
2:F:149(D):ALA:O	2:F:150:VAL:N	2.37	0.57
2:F:195:SER:O	2:F:213:VAL:HB	2.03	0.57
2:F:67:ARG:CB	2:F:67:ARG:HH11	2.18	0.57
2:B:66:VAL:C	2:B:67:ARG:HG2	2.24	0.57
1:A:8:GLU:O	1:A:10:LYS:N	2.34	0.56
3:D:211:GLU:O	3:D:215:ILE:HG13	2.04	0.56
2:B:77(A):ARG:HH12	3:D:216:LYS:HB2	1.70	0.56
3:H:12:VAL:HG21	3:H:121:LEU:CD2	2.35	0.56
2:B:172:THR:HG22	2:B:173:ARG:N	2.20	0.56
2:F:219:GLY:O	2:F:220:CYS:SG	2.63	0.56
1:A:14(A):GLN:HG2	2:B:23:GLU:OE2	2.05	0.56
3:H:227:ILE:HG13	3:H:280:TYR:CE2	2.40	0.56
1:A:14(G):PHE:CZ	2:B:202:LYS:HD3	2.41	0.56
2:B:73:ARG:HG2	2:B:153:SER:O	2.06	0.56
3:D:199:GLU:O	3:D:202:PRO:HD3	2.05	0.56
3:D:73:LEU:HD21	3:D:121:LEU:CD1	2.36	0.56
1:E:1(K):ASN:HD22	1:E:1(I):LYS:CG	2.16	0.56
3:H:125:LEU:O	3:H:129:VAL:HG23	2.05	0.56
3:H:36:SER:HA	3:H:39:ILE:CD1	2.33	0.56
3:H:49:HIS:ND1	3:H:206:SER:HB2	2.20	0.56
3:D:6:TYR:HD2	3:D:8:LYS:HZ2	1.53	0.56
2:F:114:LEU:N	2:F:114:LEU:HD23	2.21	0.56
2:F:56:ALA:HA	2:F:104:ALA:HB2	1.88	0.56
2:B:152:PRO:HG3	2:B:156:GLN:CG	2.35	0.56
3:D:125:LEU:O	3:D:129:VAL:HG23	2.06	0.56
2:F:60:LEU:O	2:F:60:LEU:HD23	2.06	0.56
2:B:29:TRP:CG	2:B:121:VAL:HB	2.41	0.56
3:D:93:GLU:O	3:D:94:GLU:HG3	2.06	0.56
2:B:31:VAL:HG12	2:B:32:MET:N	2.20	0.56
2:F:64:LEU:HD13	2:F:85:LEU:HD12	1.89	0.55
2:B:118:ILE:HG22	2:B:118:ILE:O	2.05	0.55
3:D:215:ILE:O	3:D:219:GLU:N	2.31	0.55

Continued on next page...

Continued from previous page...

Atom-1	Atom-2	Interatomic distance (Å)	Clash overlap (Å)
3:D:27:LEU:O	3:D:29:GLY:N	2.39	0.55
3:D:50:TYR:HA	3:D:55:TYR:CD1	2.42	0.55
1:E:1(A):ASP:O	1:E:1:CYS:O	2.23	0.55
2:B:67:ARG:HH12	2:B:70:LYS:NZ	2.05	0.55
2:F:23:GLU:O	2:F:24:VAL:C	2.42	0.55
3:H:241:ASP:CB	3:H:244:LYS:HB2	2.35	0.55
3:H:45:LEU:C	3:H:47:THR:H	2.09	0.55
2:B:144:ARG:HG3	2:B:150:VAL:O	2.07	0.55
2:B:67:ARG:HH11	2:B:67:ARG:CB	2.18	0.55
3:D:73:LEU:HD21	3:D:121:LEU:HD13	1.89	0.55
3:H:50:TYR:O	3:H:52:GLU:N	2.37	0.55
2:F:31:VAL:HG12	2:F:32:MET:N	2.21	0.55
3:H:246:HIS:HB3	3:H:249:ASN:H	1.70	0.55
2:B:53:LEU:HD11	2:B:103:ILE:HD11	1.88	0.55
2:B:178:ASP:O	2:B:233:ARG:HD3	2.07	0.55
1:A:4:ARG:HH11	2:B:26:LEU:HD12	1.70	0.55
2:F:176:ILE:HG22	2:F:177:THR:N	2.21	0.55
3:H:10:SER:OG	3:H:12:VAL:HG23	2.07	0.55
1:A:1(E):ALA:N	2:B:49:ASP:OD1	2.38	0.55
3:D:116:ARG:HD2	3:D:120:GLU:OE2	2.06	0.55
3:H:65:ARG:O	3:H:69:GLU:HG2	2.07	0.55
3:D:227:ILE:HG13	3:D:280:TYR:CE2	2.42	0.55
2:B:164:GLU:CD	2:B:164:GLU:H	2.09	0.55
2:B:59:LEU:HD13	2:B:88:ILE:HD11	1.89	0.55
2:B:160:LEU:HD12	2:B:228:TYR:OH	2.08	0.54
2:B:56:ALA:HA	2:B:104:ALA:HB2	1.89	0.54
2:B:60:LEU:C	2:B:60:LEU:HD23	2.26	0.54
2:B:64:LEU:HD13	2:B:85:LEU:HD12	1.89	0.54
3:D:49:HIS:ND1	3:D:206:SER:HB2	2.23	0.54
2:F:172:THR:HG22	2:F:174:ILE:HG13	1.88	0.54
3:H:93:GLU:O	3:H:94:GLU:HG3	2.07	0.54
3:D:171:VAL:O	3:D:174:ALA:HB3	2.08	0.54
2:F:33:LEU:HD22	2:F:64:LEU:HD22	1.89	0.54
2:B:23:GLU:O	2:B:24:VAL:C	2.44	0.54
2:F:124:PRO:HB3	2:F:210:MET:SD	2.47	0.54
2:B:68:ILE:HD12	2:B:68:ILE:H	1.72	0.54
3:D:65:ARG:O	3:D:69:GLU:HG2	2.07	0.54
2:F:60(A):TYR:CZ	4:F:600:OG6:HG2	2.43	0.54
2:F:188:GLY:O	2:F:189:ASP:HB2	2.07	0.54
2:F:178:ASP:O	2:F:233:ARG:HD3	2.08	0.54
2:F:73:ARG:HG2	2:F:153:SER:O	2.07	0.54

Continued on next page...

Continued from previous page...

Atom-1	Atom-2	Interatomic distance (Å)	Clash overlap (Å)
3:D:246:HIS:HB3	3:D:249:ASN:H	1.73	0.53
1:A:14(D):LYS:O	1:A:14(H):GLU:HG2	2.07	0.53
2:B:103:ILE:HG13	2:B:212:ILE:CD1	2.38	0.53
3:D:164:LEU:CD1	3:D:215:ILE:HG23	2.39	0.53
2:F:144:ARG:HG3	2:F:150:VAL:O	2.08	0.53
2:F:145:ARG:HG2	2:F:146:GLU:H	1.73	0.53
2:F:16:ILE:HD13	2:F:190:ALA:HA	1.90	0.53
2:B:28:PRO:HB2	2:B:119:HIS:N	2.20	0.53
2:F:59:LEU:HD13	2:F:88:ILE:HD11	1.90	0.53
2:B:29:TRP:CD2	2:B:121:VAL:HB	2.42	0.53
3:D:197:GLY:CA	3:D:203:HIS:CD2	2.92	0.53
3:D:241:ASP:CB	3:D:244:LYS:HB2	2.36	0.53
2:F:68:ILE:HD12	2:F:68:ILE:H	1.73	0.53
2:B:131:HIS:HB2	2:B:134:PHE:CD2	2.43	0.53
3:H:12:VAL:HG21	3:H:121:LEU:HD23	1.88	0.53
2:B:150:VAL:HG12	2:B:150:VAL:O	2.09	0.53
2:B:64:LEU:H	2:B:64:LEU:HD12	1.74	0.53
3:H:27:LEU:HD13	3:H:28:LYS:N	2.24	0.53
2:B:172:THR:HG22	2:B:174:ILE:HG13	1.91	0.53
3:D:238:THR:HG22	3:D:239:SER:O	2.09	0.53
3:D:45:LEU:C	3:D:47:THR:H	2.10	0.53
3:D:9:GLU:HG3	3:D:68:GLY:HA3	1.91	0.53
3:H:241:ASP:OD2	3:H:244:LYS:HB2	2.09	0.53
2:B:145:ARG:HG2	2:B:146:GLU:H	1.73	0.53
3:D:169:TYR:OH	3:D:193:ASP:OD1	2.24	0.53
2:F:152:PRO:HG3	2:F:156:GLN:CG	2.38	0.53
2:F:105:LEU:HD22	2:F:241:VAL:CG2	2.39	0.53
3:D:246:HIS:N	3:D:250:HIS:HB2	2.22	0.53
1:E:14(D):LYS:O	1:E:14(H):GLU:HG2	2.08	0.53
3:H:149:PHE:CD2	3:H:154:GLU:HA	2.28	0.53
3:H:185:ALA:O	3:H:188:LEU:HB3	2.08	0.53
2:F:27:SER:O	2:F:30:GLN:HB3	2.08	0.52
3:D:27:LEU:HD13	3:D:28:LYS:N	2.25	0.52
3:D:157:ALA:O	3:D:159:SER:N	2.42	0.52
3:D:185:ALA:O	3:D:188:LEU:HB3	2.10	0.52
1:A:14(J):TYR:HA	2:B:134:PHE:HE1	1.73	0.52
2:F:118:ILE:HG22	2:F:118:ILE:O	2.08	0.52
2:F:29:TRP:CG	2:F:121:VAL:HB	2.45	0.52
2:F:29:TRP:CD2	2:F:121:VAL:HB	2.44	0.52
3:H:102:LEU:HD23	3:H:103:LYS:N	2.25	0.52
3:D:184:GLU:H	3:D:184:GLU:CD	2.12	0.52

Continued on next page...

Continued from previous page...

Atom-1	Atom-2	Interatomic distance (Å)	Clash overlap (Å)
3:D:36:SER:HA	3:D:39:ILE:CD1	2.35	0.52
2:F:149(C):VAL:HG11	3:H:42:LEU:CD1	2.35	0.52
3:H:49:HIS:ND1	3:H:206:SER:CB	2.73	0.52
2:B:124:PRO:HB3	2:B:210:MET:SD	2.49	0.52
3:H:147:LYS:HD2	3:H:148:PRO:HD2	1.91	0.52
2:B:188:GLY:O	2:B:189:ASP:HB2	2.08	0.52
3:D:50:TYR:O	3:D:52:GLU:N	2.39	0.52
3:H:164:LEU:CD1	3:H:215:ILE:HG23	2.39	0.52
3:D:11:ARG:HG2	3:D:11:ARG:NH2	2.22	0.52
2:F:131:HIS:HB2	2:F:134:PHE:CD2	2.45	0.52
3:H:104:THR:H	3:H:107:GLN:CD	2.13	0.52
2:F:150:VAL:HG12	2:F:150:VAL:O	2.10	0.52
3:H:73:LEU:HD21	3:H:121:LEU:CD1	2.40	0.52
3:H:246:HIS:N	3:H:250:HIS:HB2	2.24	0.52
3:D:92:LYS:HE3	3:D:98:SER:CB	2.34	0.52
2:F:64:LEU:H	2:F:64:LEU:HD12	1.75	0.52
3:H:157:ALA:O	3:H:159:SER:N	2.42	0.52
3:H:184:GLU:OE1	3:H:184:GLU:N	2.35	0.52
3:D:241:ASP:OD2	3:D:244:LYS:HB2	2.09	0.51
3:H:164:LEU:C	3:H:164:LEU:HD23	2.30	0.51
3:H:261:THR:O	3:H:264:ALA:HB3	2.09	0.51
1:A:3:LEU:O	2:B:119:HIS:ND1	2.44	0.51
3:D:226:PHE:O	3:D:230:GLY:N	2.43	0.51
1:E:1(E):ALA:N	2:F:49:ASP:OD1	2.42	0.51
3:H:197:GLY:CA	3:H:203:HIS:CD2	2.93	0.51
2:B:125:ASP:HB3	2:B:128:THR:HB	1.93	0.51
2:B:165:ARG:HH11	2:B:165:ARG:HG2	1.75	0.51
3:D:49:HIS:ND1	3:D:206:SER:CB	2.73	0.51
2:F:204(B):ASN:ND2	2:F:206:ARG:HB2	2.25	0.51
3:H:11:ARG:HG2	3:H:11:ARG:NH2	2.25	0.51
2:B:125:ASP:O	2:B:129:ALA:N	2.40	0.51
2:B:163:VAL:HB	2:B:182:CYS:SG	2.50	0.51
3:D:78:LYS:HG2	3:D:105:PHE:HE1	1.76	0.51
3:H:164:LEU:O	3:H:167:LYS:HB2	2.10	0.51
2:B:235:LYS:HA	2:B:238:ILE:HD12	1.92	0.51
3:H:188:LEU:HD12	3:H:221:ILE:HG22	1.93	0.51
3:H:199:GLU:O	3:H:202:PRO:HD3	2.11	0.51
2:B:114:LEU:N	2:B:114:LEU:HD23	2.26	0.51
3:D:157:ALA:O	3:D:158:THR:C	2.49	0.51
3:D:238:THR:HG22	3:D:239:SER:N	2.26	0.51
2:F:18:GLU:HB2	2:F:188:GLY:HA2	1.93	0.51

Continued on next page...

Continued from previous page...

Atom-1	Atom-2	Interatomic distance (Å)	Clash overlap (Å)
2:B:198:PRO:HB2	2:B:209:GLN:HG3	1.93	0.51
2:B:219:GLY:O	2:B:220:CYS:SG	2.68	0.51
2:B:237:TRP:O	2:B:240:LYS:HB3	2.11	0.51
3:H:143:HIS:HB3	3:H:146:LEU:HD12	1.93	0.51
3:H:238:THR:HG22	3:H:239:SER:O	2.11	0.51
3:H:30:ARG:HA	3:H:30:ARG:HE	1.76	0.51
2:B:53:LEU:HD23	2:B:209:GLN:NE2	2.25	0.51
2:B:27:SER:O	2:B:30:GLN:HB3	2.11	0.51
3:D:182:LYS:O	3:D:186:LEU:HG	2.11	0.51
2:F:66:VAL:C	2:F:67:ARG:HG2	2.31	0.51
3:D:48:TYR:CD2	3:D:203:HIS:HB3	2.46	0.51
2:F:114:LEU:HD13	2:F:120:PRO:HD3	1.92	0.51
2:F:71:HIS:O	2:F:154:VAL:HA	2.11	0.51
3:H:73:LEU:O	3:H:76:ARG:HB2	2.11	0.51
3:H:9:GLU:HG3	3:H:68:GLY:HA3	1.93	0.51
3:D:16:SER:HB3	3:D:116:ARG:HG3	1.92	0.50
3:H:238:THR:HG22	3:H:239:SER:N	2.27	0.50
3:D:188:LEU:HD12	3:D:221:ILE:HG22	1.93	0.50
2:F:203:SER:HB3	2:F:204(B):ASN:OD1	2.11	0.50
3:H:97:THR:C	3:H:99:LYS:H	2.15	0.50
3:D:164:LEU:C	3:D:164:LEU:HD23	2.32	0.50
3:D:38:PHE:O	3:D:42:LEU:HG	2.11	0.50
2:F:67:ARG:NH1	2:F:70:LYS:HD2	2.27	0.50
3:H:81:TYR:HD1	3:H:108:TYR:CD2	2.29	0.50
2:B:228:TYR:N	2:B:228:TYR:CD1	2.78	0.50
3:D:229:THR:C	3:D:231:LEU:H	2.15	0.50
1:E:4:ARG:HH11	2:F:26:LEU:HD12	1.75	0.50
2:B:105:LEU:HD22	2:B:241:VAL:CG2	2.41	0.50
2:B:26:LEU:HD11	2:B:137:ARG:NH1	2.26	0.50
3:D:143:HIS:HB3	3:D:146:LEU:HD12	1.92	0.50
2:B:144:ARG:HD3	3:D:63:MET:CE	2.42	0.50
2:F:191:CYS:SG	2:F:192:GLU:N	2.83	0.50
2:F:45:SER:O	2:F:52:VAL:HG23	2.11	0.50
3:D:81:TYR:HD1	3:D:108:TYR:CD2	2.29	0.50
1:A:1(G):PHE:HD1	2:B:242:ILE:HG21	1.77	0.50
3:D:97:THR:C	3:D:99:LYS:H	2.15	0.50
2:F:73:ARG:CD	2:F:152:PRO:O	2.53	0.50
2:F:198:PRO:HB2	2:F:209:GLN:HG3	1.93	0.50
2:F:235:LYS:HA	2:F:238:ILE:HD12	1.93	0.50
2:B:26:LEU:HD11	2:B:137:ARG:HH12	1.77	0.49
2:B:59:LEU:HD13	2:B:88:ILE:HD13	1.93	0.49

Continued on next page...

Continued from previous page...

Atom-1	Atom-2	Interatomic distance (Å)	Clash overlap (Å)
2:F:124:PRO:HB3	2:F:210:MET:CE	2.42	0.49
3:H:78:LYS:HG2	3:H:105:PHE:HE1	1.77	0.49
3:H:27:LEU:O	3:H:29:GLY:N	2.45	0.49
3:D:164:LEU:O	3:D:167:LYS:HB2	2.11	0.49
3:D:73:LEU:O	3:D:76:ARG:HB2	2.11	0.49
2:F:228:TYR:N	2:F:228:TYR:CD1	2.80	0.49
2:F:67:ARG:HD2	2:F:82:ILE:HG13	1.93	0.49
3:H:171:VAL:O	3:H:174:ALA:HB3	2.12	0.49
3:H:48:TYR:CD2	3:H:203:HIS:HB3	2.48	0.49
2:B:114:LEU:HD13	2:B:120:PRO:HD3	1.94	0.49
2:B:204(B):ASN:HD22	2:B:206:ARG:HD2	1.77	0.49
2:B:60:LEU:O	2:B:60:LEU:HD23	2.12	0.49
2:B:67:ARG:HD2	2:B:82:ILE:HG13	1.94	0.49
3:H:229:THR:C	3:H:231:LEU:H	2.16	0.49
2:B:32:MET:HB2	2:B:141:TRP:HZ3	1.78	0.49
2:B:217:GLU:HB2	2:B:224:LYS:CD	2.42	0.49
3:H:157:ALA:O	3:H:158:THR:C	2.50	0.49
2:B:144:ARG:HH11	2:B:152:PRO:HB3	1.77	0.49
3:D:11:ARG:NH1	3:D:65:ARG:HD3	2.27	0.49
2:F:204(B):ASN:ND2	2:F:206:ARG:HD2	2.28	0.49
3:D:145:ASP:OD1	3:D:209:ARG:HB2	2.12	0.49
3:D:147:LYS:HD2	3:D:148:PRO:HD2	1.95	0.49
2:F:103:ILE:HG13	2:F:212:ILE:CD1	2.42	0.49
2:F:237:TRP:O	2:F:240:LYS:HB3	2.13	0.49
2:B:204(B):ASN:ND2	2:B:206:ARG:HB2	2.28	0.49
2:B:204(B):ASN:ND2	2:B:206:ARG:HD2	2.28	0.49
2:B:31:VAL:HG21	2:B:52:VAL:CG2	2.42	0.49
2:F:160:LEU:HD12	2:F:228:TYR:OH	2.12	0.49
3:H:226:PHE:O	3:H:230:GLY:N	2.46	0.49
2:B:124:PRO:HB3	2:B:210:MET:CE	2.43	0.48
2:B:16:ILE:CD1	2:B:190:ALA:HA	2.43	0.48
2:B:130:LEU:HG	2:B:210:MET:HE2	1.95	0.48
2:B:203:SER:HB3	2:B:204(B):ASN:OD1	2.13	0.48
2:B:93:ARG:HH21	2:B:101:ARG:NH2	2.11	0.48
1:E:14(I):SER:HB2	2:F:134:PHE:HA	1.95	0.48
2:F:204(B):ASN:HD22	2:F:206:ARG:HD2	1.78	0.48
3:H:257:LEU:HD23	3:H:257:LEU:O	2.13	0.48
2:B:71:HIS:O	2:B:154:VAL:HA	2.13	0.48
3:D:14:GLU:O	3:D:16:SER:N	2.45	0.48
3:H:11:ARG:NH1	3:H:65:ARG:HD3	2.27	0.48
2:F:41:LEU:HD22	2:F:60(H):PHE:HE2	1.79	0.48

Continued on next page...

Continued from previous page...

Atom-1	Atom-2	Interatomic distance (Å)	Clash overlap (Å)
3:H:97:THR:HG22	3:H:99:LYS:HB2	1.96	0.48
2:B:91:HIS:ND1	2:B:92:PRO:CD	2.76	0.48
2:F:165:ARG:HH11	2:F:165:ARG:HG2	1.79	0.48
2:F:53:LEU:HD23	2:F:209:GLN:NE2	2.27	0.48
3:D:232:ASN:HD22	3:D:272:TRP:HZ2	1.62	0.48
2:F:26:LEU:HD11	2:F:137:ARG:NH1	2.28	0.48
2:F:31:VAL:CG1	2:F:66:VAL:HB	2.44	0.48
3:D:261:THR:O	3:D:264:ALA:HB3	2.14	0.48
3:H:149:PHE:HB2	3:H:154:GLU:HB2	1.96	0.48
3:H:198:ASP:HB3	3:H:200:ASP:OD2	2.14	0.48
2:F:163:VAL:HB	2:F:182:CYS:SG	2.53	0.48
3:H:167:LYS:HG3	3:H:239:SER:HG	1.79	0.48
3:H:196:LEU:HD23	3:H:197:GLY:O	2.14	0.48
1:A:14(J):TYR:HA	2:B:134:PHE:CD1	2.48	0.48
2:F:32:MET:HB2	2:F:141:TRP:HZ3	1.79	0.48
2:F:144:ARG:HH11	2:F:152:PRO:HB3	1.79	0.48
3:H:215:ILE:O	3:H:219:GLU:HB2	2.14	0.48
3:H:47:THR:HB	3:H:50:TYR:HD1	1.79	0.48
2:B:18:GLU:HB2	2:B:188:GLY:HA2	1.94	0.47
3:D:30:ARG:HA	3:D:30:ARG:HE	1.78	0.47
3:H:241:ASP:OD2	3:H:244:LYS:N	2.46	0.47
2:B:36(A):SER:HA	2:B:37:PRO:C	2.34	0.47
2:B:49:ASP:CG	2:B:50:ARG:HH21	2.17	0.47
2:B:67:ARG:NH1	2:B:70:LYS:HD2	2.29	0.47
3:D:1:ILE:HG22	3:D:1:ILE:O	2.13	0.47
3:D:241:ASP:OD2	3:D:244:LYS:N	2.47	0.47
2:F:85:LEU:HD22	2:F:106:LEU:HB3	1.97	0.47
2:F:93:ARG:HH21	2:F:101:ARG:NH2	2.11	0.47
3:H:214:MET:O	3:H:218:LEU:HG	2.14	0.47
3:H:73:LEU:HD21	3:H:121:LEU:HD13	1.95	0.47
2:B:92:PRO:C	2:B:94:TYR:H	2.17	0.47
2:B:149(E):GLU:HB2	3:D:46:GLU:HG3	1.96	0.47
3:H:110:ILE:CD1	3:H:110:ILE:H	2.27	0.47
3:H:14:GLU:HG3	3:H:15:ASN:N	2.29	0.47
2:B:115:SER:C	2:B:117:TYR:H	2.17	0.47
2:B:33:LEU:HD22	2:B:64:LEU:HD22	1.97	0.47
2:B:51:TRP:CZ3	2:B:105:LEU:HD23	2.49	0.47
3:H:217:ASP:O	3:H:221:ILE:HG13	2.14	0.47
3:H:232:ASN:HD22	3:H:272:TRP:HZ2	1.61	0.47
1:A:6:LEU:HG	2:B:116:ASP:HB3	1.95	0.47
2:B:73:ARG:CD	2:B:152:PRO:O	2.53	0.47

Continued on next page...

Continued from previous page...

Atom-1	Atom-2	Interatomic distance (Å)	Clash overlap (Å)
2:F:121:VAL:HG22	2:F:122:CYS:N	2.29	0.47
2:F:217:GLU:HB2	2:F:224:LYS:CD	2.43	0.47
3:H:1:ILE:O	3:H:1:ILE:HG22	2.14	0.47
3:D:97:THR:HG22	3:D:99:LYS:HB2	1.97	0.47
2:F:45:SER:O	2:F:52:VAL:HA	2.14	0.47
2:F:41:LEU:CD2	2:F:60(H):PHE:HE2	2.27	0.47
2:F:91:HIS:ND1	2:F:92:PRO:CD	2.76	0.47
1:A:1(G):PHE:HD1	2:B:242:ILE:HD13	1.79	0.47
1:A:1(K):ASN:ND2	1:A:1(I):LYS:HG3	2.22	0.47
2:F:125:ASP:HB3	2:F:128:THR:HB	1.95	0.47
2:F:211:GLY:CA	2:F:231:VAL:HG23	2.31	0.47
2:F:26:LEU:HD11	2:F:137:ARG:HH12	1.80	0.47
2:B:95:ASN:O	2:B:99:LEU:N	2.48	0.47
3:H:45:LEU:C	3:H:47:THR:N	2.69	0.47
3:D:45:LEU:C	3:D:47:THR:N	2.69	0.47
2:F:233:ARG:HG2	2:F:233:ARG:HH11	1.80	0.47
2:F:74:THR:HB	2:F:75:ARG:H	1.59	0.47
2:B:31:VAL:CG1	2:B:66:VAL:HB	2.45	0.46
2:F:28:PRO:HB2	2:F:119:HIS:N	2.19	0.46
2:F:31:VAL:HG21	2:F:52:VAL:CG2	2.46	0.46
2:F:49:ASP:CG	2:F:50:ARG:HH21	2.17	0.46
2:F:95:ASN:O	2:F:99:LEU:N	2.48	0.46
3:H:184:GLU:CD	3:H:184:GLU:H	2.11	0.46
3:H:27:LEU:C	3:H:27:LEU:HD13	2.36	0.46
2:B:121:VAL:HG22	2:B:122:CYS:N	2.31	0.46
1:E:1(A):ASP:O	1:E:1:CYS:C	2.54	0.46
2:B:233:ARG:HH11	2:B:233:ARG:HG2	1.79	0.46
3:D:145:ASP:CB	3:D:208:GLU:HB3	2.43	0.46
3:D:215:ILE:O	3:D:219:GLU:HB2	2.15	0.46
2:F:36(A):SER:HA	2:F:37:PRO:C	2.35	0.46
3:H:61:LYS:HD2	3:H:135:ASP:OD1	2.14	0.46
2:B:45:SER:O	2:B:52:VAL:HA	2.16	0.46
2:F:124:PRO:HB3	2:F:210:MET:HE3	1.96	0.46
1:E:1(G):PHE:HD1	2:F:242:ILE:HG21	1.80	0.46
2:F:28:PRO:CB	2:F:119:HIS:H	2.21	0.46
3:H:187:GLU:O	3:H:191:LYS:CG	2.54	0.46
2:B:59:LEU:HD11	2:B:106:LEU:HD21	1.98	0.46
3:D:31:LEU:O	3:D:34:LEU:HB2	2.15	0.46
2:B:201:MET:SD	2:B:210:MET:HG3	2.55	0.46
3:D:198:ASP:HB3	3:D:200:ASP:OD2	2.16	0.46
3:D:61:LYS:HD2	3:D:135:ASP:OD1	2.16	0.46

Continued on next page...

Continued from previous page...

Atom-1	Atom-2	Interatomic distance (Å)	Clash overlap (Å)
2:F:204(B):ASN:HD21	2:F:206:ARG:HB2	1.79	0.46
2:F:86:ASP:HB2	2:F:109:LYS:HA	1.98	0.46
3:H:145:ASP:OD1	3:H:209:ARG:HB2	2.15	0.46
2:F:30:GLN:NE2	2:F:31:VAL:O	2.48	0.46
1:E:1(F):GLY:HA2	2:F:50:ARG:CZ	2.46	0.46
1:E:3:LEU:O	2:F:119:HIS:ND1	2.49	0.46
2:F:51:TRP:CZ3	2:F:105:LEU:HD23	2.51	0.46
2:B:56:ALA:HB2	2:B:103:ILE:N	2.30	0.46
3:D:102:LEU:HD23	3:D:103:LYS:N	2.30	0.46
3:D:178:ASP:OD2	3:D:181:HIS:CD2	2.69	0.46
3:D:245:HIS:CD2	3:D:245:HIS:N	2.84	0.46
3:D:257:LEU:O	3:D:257:LEU:HD23	2.15	0.46
2:B:87:LYS:HD3	2:B:89:TYR:OH	2.16	0.45
3:D:27:LEU:C	3:D:29:GLY:N	2.70	0.45
3:H:245:HIS:N	3:H:245:HIS:CD2	2.83	0.45
2:B:187:ARG:NH2	2:B:222:ASP:OD2	2.50	0.45
2:B:90:ILE:N	2:B:90:ILE:HD12	2.31	0.45
2:F:105:LEU:HD22	2:F:241:VAL:HG21	1.97	0.45
1:A:1(F):GLY:HA2	2:B:50:ARG:CZ	2.46	0.45
3:D:85:LYS:O	3:D:88:TYR:HB3	2.17	0.45
2:F:187:ARG:NH2	2:F:222:ASP:OD2	2.50	0.45
2:B:64:LEU:N	2:B:64:LEU:HD12	2.30	0.45
2:B:90:ILE:HG22	2:B:91:HIS:N	2.31	0.45
3:D:110:ILE:H	3:D:110:ILE:CD1	2.27	0.45
2:F:135:LYS:HA	2:F:161:PRO:HA	1.97	0.45
3:H:38:PHE:O	3:H:42:LEU:HG	2.16	0.45
1:A:1(A):ASP:O	1:A:1:CYS:C	2.54	0.45
2:B:211:GLY:CA	2:B:231:VAL:HG23	2.34	0.45
3:D:44:ILE:N	3:D:44:ILE:HD12	2.32	0.45
3:H:86:LYS:C	3:H:88:TYR:H	2.20	0.45
2:B:110:ARG:HG2	2:B:110:ARG:HH11	1.81	0.45
3:D:234:PRO:CB	3:D:264:ALA:HB1	2.47	0.45
3:H:150:THR:O	3:H:151:ASP:C	2.54	0.45
3:D:149:PHE:HE2	3:D:157:ALA:HB2	1.82	0.45
2:F:123:LEU:O	2:F:124:PRO:C	2.55	0.45
2:F:17:VAL:O	2:F:18:GLU:HB2	2.17	0.45
2:F:56:ALA:HB2	2:F:103:ILE:N	2.31	0.45
2:F:64:LEU:N	2:F:64:LEU:HD12	2.31	0.45
3:H:14:GLU:O	3:H:16:SER:N	2.49	0.45
3:H:14:GLU:O	3:H:17:LYS:NZ	2.48	0.45
3:H:145:ASP:CB	3:H:208:GLU:HB3	2.46	0.45

Continued on next page...

Continued from previous page...

Atom-1	Atom-2	Interatomic distance (Å)	Clash overlap (Å)
2:B:33:LEU:HD23	2:B:33:LEU:HA	1.80	0.45
3:D:149:PHE:CD2	3:D:154:GLU:HA	2.30	0.45
3:D:89:GLN:C	3:D:91:TYR:H	2.21	0.45
3:H:149:PHE:HE2	3:H:157:ALA:HB2	1.81	0.45
2:B:45:SER:O	2:B:52:VAL:HG23	2.17	0.44
2:B:77(A):ARG:HD3	3:D:217:ASP:OD2	2.17	0.44
3:D:214:MET:O	3:D:218:LEU:HG	2.17	0.44
3:D:245:HIS:HB3	3:D:253:GLY:C	2.37	0.44
2:F:108:LEU:N	2:F:108:LEU:CD1	2.80	0.44
2:B:149:THR:C	2:B:149(A):THR:O	2.54	0.44
2:B:67:ARG:HH12	2:B:70:LYS:HZ3	1.64	0.44
3:D:149:PHE:HB2	3:D:154:GLU:HB2	1.98	0.44
1:E:15:ARG:HB3	1:E:15:ARG:HH11	1.80	0.44
3:H:13:ASN:N	3:H:120:GLU:OE1	2.46	0.44
3:H:28:LYS:HA	3:H:31:LEU:HD12	1.98	0.44
2:B:144:ARG:NH1	2:B:152:PRO:HB3	2.31	0.44
2:B:17:VAL:O	2:B:18:GLU:HB2	2.17	0.44
1:A:1(G):PHE:CD1	2:B:242:ILE:HD13	2.52	0.44
1:E:14(I):SER:O	2:F:134:PHE:HD1	2.00	0.44
2:F:244:ARG:HG2	2:F:244:ARG:NH1	2.32	0.44
2:B:54:THR:OG1	2:B:196:GLY:HA3	2.17	0.44
2:B:60(G):ASN:CG	5:B:700:NAG:N2	2.70	0.44
3:D:13:ASN:N	3:D:120:GLU:OE1	2.47	0.44
3:D:47:THR:HB	3:D:50:TYR:HD1	1.82	0.44
2:B:74:THR:HG21	3:D:51:GLY:HA3	2.00	0.44
2:F:56:ALA:HB2	2:F:103:ILE:C	2.37	0.44
3:H:176:VAL:O	3:H:182:LYS:HG3	2.18	0.44
2:B:41:LEU:HD22	2:B:60(H):PHE:HE2	1.82	0.44
2:B:85:LEU:HD22	2:B:106:LEU:HB3	2.00	0.44
2:B:92:PRO:O	2:B:94:TYR:N	2.48	0.44
1:E:14(K):ILE:HG12	1:E:14(M):GLY:O	2.17	0.44
2:B:165:ARG:NH2	2:B:177:THR:C	2.71	0.44
2:B:204(A):TYR:O	2:B:204(B):ASN:HB3	2.18	0.44
2:B:99:LEU:HD12	2:B:215:TRP:HB3	1.99	0.44
2:F:68:ILE:HG22	2:F:69:GLY:H	1.83	0.44
3:H:31:LEU:O	3:H:34:LEU:HB2	2.18	0.44
2:B:145:ARG:HG2	2:B:146:GLU:N	2.32	0.44
3:D:81:TYR:O	3:D:84:TYR:HB3	2.18	0.44
2:F:237:TRP:O	2:F:241:VAL:HG13	2.18	0.44
3:H:16:SER:CB	3:H:116:ARG:HG2	2.48	0.44
3:H:178:ASP:OD2	3:H:181:HIS:CD2	2.71	0.44

Continued on next page...

Continued from previous page...

Atom-1	Atom-2	Interatomic distance (Å)	Clash overlap (Å)
3:H:245:HIS:HB3	3:H:253:GLY:C	2.38	0.44
2:B:135:LYS:HA	2:B:161:PRO:HA	1.98	0.44
2:B:60(A):TYR:CZ	4:B:500:0G6:HG2	2.53	0.44
2:B:41:LEU:CD2	2:B:60(H):PHE:HE2	2.30	0.44
2:F:110:ARG:HG2	2:F:110:ARG:HH11	1.81	0.44
2:F:59:LEU:HD13	2:F:88:ILE:HD13	1.95	0.44
2:F:87:LYS:HD3	2:F:89:TYR:OH	2.18	0.44
3:H:164:LEU:O	3:H:164:LEU:HD23	2.17	0.44
1:A:14(K):ILE:HG12	1:A:14(M):GLY:O	2.17	0.44
1:A:4:ARG:N	1:A:8:GLU:HB2	2.33	0.44
2:B:37:PRO:O	2:B:38:GLN:C	2.56	0.44
3:D:14:GLU:HG3	3:D:15:ASN:N	2.27	0.44
3:D:196:LEU:HD23	3:D:197:GLY:O	2.17	0.44
3:D:217:ASP:O	3:D:221:ILE:HG13	2.18	0.44
1:E:1(M):PHE:CD1	1:E:1(M):PHE:O	2.71	0.44
2:F:145:ARG:HG2	2:F:146:GLU:N	2.32	0.44
2:F:238:ILE:O	2:F:242:ILE:HG13	2.18	0.44
2:F:44:ALA:O	2:F:198:PRO:HD3	2.17	0.44
2:B:46:LEU:O	2:B:121:VAL:HG12	2.17	0.43
2:B:204(B):ASN:HD21	2:B:206:ARG:HB2	1.82	0.43
2:B:244:ARG:HG2	2:B:244:ARG:NH1	2.31	0.43
3:D:86:LYS:C	3:D:88:TYR:H	2.21	0.43
2:F:93:ARG:HE	2:F:101:ARG:HH12	1.67	0.43
2:F:60(C):PRO:HD3	2:F:96:TRP:CE3	2.53	0.43
3:H:81:TYR:O	3:H:84:TYR:HB3	2.18	0.43
2:B:54:THR:O	2:B:104:ALA:N	2.49	0.43
3:D:71:GLN:O	3:D:72:TYR:C	2.57	0.43
1:E:14(I):SER:O	2:F:134:PHE:CD1	2.72	0.43
3:H:233:LYS:HB3	3:H:272:TRP:CD2	2.53	0.43
2:B:123:LEU:O	2:B:124:PRO:C	2.57	0.43
2:B:139:THR:HG22	2:B:157:VAL:HG23	1.99	0.43
2:B:165:ARG:HH11	2:B:165:ARG:CG	2.31	0.43
2:B:60(C):PRO:HD3	2:B:96:TRP:CE3	2.54	0.43
3:D:28:LYS:HA	3:D:31:LEU:HD12	2.00	0.43
2:B:105:LEU:HD22	2:B:241:VAL:HG21	1.99	0.43
2:F:149:THR:C	2:F:149(A):THR:O	2.54	0.43
2:F:68:ILE:HG22	2:F:69:GLY:N	2.34	0.43
3:H:269:ASP:C	3:H:269:ASP:OD1	2.56	0.43
2:B:149(C):VAL:HG11	3:D:42:LEU:CD1	2.43	0.43
2:B:217:GLU:OE1	2:B:224:LYS:HD3	2.19	0.43
2:F:59:LEU:HD11	2:F:106:LEU:HD21	2.00	0.43

Continued on next page...

Continued from previous page...

Atom-1	Atom-2	Interatomic distance (Å)	Clash overlap (Å)
2:F:16:ILE:CD1	2:F:190:ALA:HA	2.48	0.43
2:F:31:VAL:HG12	2:F:32:MET:H	1.83	0.43
2:B:238:ILE:O	2:B:242:ILE:HG13	2.19	0.43
3:D:152:GLU:O	3:D:155:GLU:HB3	2.18	0.43
3:D:150:THR:O	3:D:151:ASP:C	2.55	0.43
2:F:198:PRO:CB	2:F:209:GLN:HG3	2.49	0.43
3:H:19:GLY:H	3:H:114:THR:HG21	1.84	0.43
2:B:32:MET:HB2	2:B:141:TRP:CZ3	2.53	0.43
3:D:110:ILE:N	3:D:110:ILE:CD1	2.80	0.43
3:D:136:VAL:O	3:D:137:GLU:C	2.57	0.43
3:D:205:ILE:HA	3:D:210:ILE:HG21	2.01	0.43
1:E:14(G):PHE:CZ	2:F:202:LYS:HD3	2.54	0.43
2:F:115:SER:C	2:F:117:TYR:H	2.21	0.43
2:F:125:ASP:O	2:F:129:ALA:N	2.42	0.43
3:H:169:TYR:O	3:H:173:PHE:HD2	2.02	0.43
2:B:93:ARG:HE	2:B:101:ARG:HH12	1.66	0.43
2:B:237:TRP:O	2:B:241:VAL:HG13	2.19	0.43
2:B:60(G):ASN:HB2	5:B:700:NAG:C8	2.48	0.43
3:D:104:THR:H	3:D:107:GLN:NE2	2.16	0.43
3:D:12:VAL:HG21	3:D:121:LEU:HD21	2.01	0.43
2:F:241:VAL:HA	2:F:244:ARG:NH2	2.33	0.43
2:F:92:PRO:C	2:F:94:TYR:H	2.21	0.43
3:H:208:GLU:O	3:H:211:GLU:N	2.51	0.43
3:H:85:LYS:O	3:H:88:TYR:HB3	2.19	0.43
1:A:14(K):ILE:O	1:A:14(K):ILE:HG23	2.18	0.43
3:H:80:GLN:HE22	3:H:110:ILE:CG2	2.28	0.43
3:H:89:GLN:C	3:H:91:TYR:H	2.21	0.43
2:B:35:ARG:HG3	2:B:36:LYS:N	2.34	0.42
3:D:176:VAL:O	3:D:182:LYS:HG3	2.19	0.42
2:F:90:ILE:HG22	2:F:91:HIS:N	2.33	0.42
3:H:129:VAL:O	3:H:132:PHE:N	2.52	0.42
1:A:1(M):PHE:CD1	1:A:1(M):PHE:O	2.72	0.42
2:B:86:ASP:HB2	2:B:109:LYS:HA	2.02	0.42
2:B:241:VAL:HA	2:B:244:ARG:NH2	2.34	0.42
3:D:89:GLN:C	3:D:91:TYR:N	2.73	0.42
1:E:4:ARG:N	1:E:8:GLU:HB2	2.34	0.42
2:B:242:ILE:C	2:B:244:ARG:H	2.22	0.42
2:B:68:ILE:HG22	2:B:69:GLY:H	1.85	0.42
3:D:167:LYS:HG3	3:D:239:SER:OG	2.19	0.42
3:H:27:LEU:C	3:H:29:GLY:N	2.72	0.42
1:A:15:ARG:HB3	1:A:15:ARG:CZ	2.49	0.42

Continued on next page...

Continued from previous page...

Atom-1	Atom-2	Interatomic distance (Å)	Clash overlap (Å)
2:B:31:VAL:HG12	2:B:32:MET:H	1.82	0.42
3:D:234:PRO:C	3:D:236:ASN:H	2.23	0.42
1:E:15:ARG:HB3	1:E:15:ARG:CZ	2.49	0.42
2:F:54:THR:OG1	2:F:196:GLY:HA3	2.19	0.42
1:A:1(M):PHE:HE2	2:B:235:LYS:HD2	1.84	0.42
2:B:191:CYS:SG	2:B:192:GLU:N	2.91	0.42
2:F:165:ARG:NH2	2:F:177:THR:C	2.73	0.42
2:F:35:ARG:HG3	2:F:36:LYS:N	2.33	0.42
2:B:176:ILE:CG2	2:B:177:THR:N	2.82	0.42
2:B:198:PRO:CB	2:B:209:GLN:HG3	2.49	0.42
1:A:14(G):PHE:HZ	2:B:202:LYS:HD3	1.83	0.42
2:B:216:GLY:O	4:B:500:OG6:N	2.53	0.42
3:D:227:ILE:HG13	3:D:280:TYR:CZ	2.55	0.42
2:F:144:ARG:NH1	2:F:152:PRO:HB3	2.33	0.42
2:F:172:THR:CG2	2:F:173:ARG:N	2.82	0.42
1:A:15:ARG:HB3	1:A:15:ARG:HH11	1.82	0.42
2:B:45:SER:O	2:B:53:LEU:N	2.45	0.42
3:D:39:ILE:H	3:D:39:ILE:HG13	1.69	0.42
2:F:32:MET:HB2	2:F:141:TRP:CZ3	2.55	0.42
3:D:62:LEU:O	3:D:65:ARG:N	2.53	0.42
1:E:1(K):ASN:ND2	1:E:1(I):LYS:HG3	2.25	0.42
2:F:203:SER:HA	2:F:204:PRO:HD3	1.89	0.42
2:B:56:ALA:HB2	2:B:103:ILE:C	2.40	0.42
3:D:208:GLU:O	3:D:211:GLU:N	2.53	0.42
3:D:269:ASP:C	3:D:269:ASP:OD1	2.58	0.42
3:D:69:GLU:OE2	3:D:69:GLU:HA	2.19	0.42
1:E:14(K):ILE:O	1:E:14(K):ILE:HG23	2.19	0.42
2:F:185:LYS:HB2	2:F:186(B):GLU:HG3	2.02	0.42
2:F:90:ILE:HD12	2:F:90:ILE:N	2.34	0.42
3:H:167:LYS:HG3	3:H:239:SER:OG	2.20	0.42
3:H:240:TYR:HE1	3:H:245:HIS:O	2.02	0.42
1:A:10:LYS:C	1:A:11:GLN:HE21	2.24	0.41
2:B:77:GLU:HB2	2:B:80:GLU:HB2	2.01	0.41
3:D:169:TYR:O	3:D:173:PHE:HD2	2.02	0.41
3:D:27:LEU:C	3:D:27:LEU:HD13	2.40	0.41
3:H:241:ASP:CG	3:H:244:LYS:HE3	2.40	0.41
3:H:227:ILE:HG21	3:H:280:TYR:CD2	2.55	0.41
2:F:129(C):LEU:O	2:F:134:PHE:HD2	2.03	0.41
3:H:149:PHE:HD2	3:H:154:GLU:CA	2.19	0.41
3:H:214:MET:CE	3:H:214:MET:HA	2.50	0.41
3:D:34:LEU:O	3:D:35:GLU:C	2.56	0.41

Continued on next page...

Continued from previous page...

Atom-1	Atom-2	Interatomic distance (Å)	Clash overlap (Å)
2:F:54:THR:O	2:F:104:ALA:N	2.53	0.41
2:F:91:HIS:CD2	2:F:101:ARG:HB3	2.55	0.41
3:H:205:ILE:HG22	3:H:205:ILE:O	2.19	0.41
3:D:149:PHE:HD2	3:D:154:GLU:CA	2.21	0.41
3:H:17:LYS:HG2	3:H:17:LYS:H	1.68	0.41
3:D:143:HIS:HB2	3:D:146:LEU:HD12	2.02	0.41
3:D:197:GLY:HA2	3:D:203:HIS:NE2	2.36	0.41
2:F:99:LEU:HD12	2:F:215:TRP:HB3	2.02	0.41
3:D:27:LEU:C	3:D:29:GLY:H	2.24	0.41
2:F:45:SER:O	2:F:53:LEU:N	2.43	0.41
3:H:136:VAL:O	3:H:137:GLU:C	2.58	0.41
3:H:152:GLU:O	3:H:155:GLU:HB3	2.20	0.41
3:H:234:PRO:CB	3:H:264:ALA:HB1	2.51	0.41
2:B:48:SER:OG	2:B:49:ASP:N	2.53	0.41
2:B:68:ILE:HG22	2:B:69:GLY:N	2.36	0.41
3:D:11:ARG:HE	3:D:65:ARG:NE	2.18	0.41
3:D:164:LEU:O	3:D:164:LEU:HD23	2.21	0.41
1:E:14(I):SER:HB3	2:F:135:LYS:HG3	2.03	0.41
2:F:176:ILE:CG2	2:F:177:THR:N	2.84	0.41
2:F:201:MET:SD	2:F:210:MET:HG3	2.61	0.41
2:F:217:GLU:OE1	2:F:224:LYS:HD3	2.20	0.41
3:H:89:GLN:C	3:H:91:TYR:N	2.73	0.41
2:B:100:ASP:OD1	2:B:177:THR:HG21	2.20	0.41
2:B:185:LYS:HB2	2:B:186(B):GLU:HG3	2.02	0.41
2:B:60(G):ASN:CG	5:B:700:NAG:HN2	2.23	0.41
3:D:19:GLY:H	3:D:114:THR:HG21	1.85	0.41
3:H:169:TYR:OH	3:H:193:ASP:OD1	2.28	0.41
2:B:113:GLU:HG3	2:B:113:GLU:O	2.21	0.41
1:E:4:ARG:HA	1:E:5:PRO:HD3	1.94	0.41
3:H:142:GLN:HB3	3:H:142:GLN:HE21	1.60	0.41
3:H:149:PHE:CZ	3:H:208:GLU:HA	2.56	0.41
2:F:149(E):GLU:HB2	3:H:46:GLU:HG3	2.03	0.41
3:D:116:ARG:CD	3:D:120:GLU:OE2	2.68	0.41
2:F:60(D):TRP:CH2	4:F:600:OG6:HG3	2.56	0.41
3:H:238:THR:CG2	3:H:239:SER:N	2.84	0.41
2:B:124:PRO:HB3	2:B:210:MET:HE3	2.02	0.40
2:B:165:ARG:HH22	2:B:177:THR:C	2.24	0.40
3:D:233:LYS:HB3	3:D:272:TRP:CD2	2.55	0.40
2:F:77:GLU:HB2	2:F:80:GLU:HB2	2.03	0.40
3:H:16:SER:HB3	3:H:116:ARG:HG2	2.03	0.40
3:D:14:GLU:O	3:D:17:LYS:NZ	2.52	0.40

Continued on next page...

Continued from previous page...

Atom-1	Atom-2	Interatomic distance (Å)	Clash overlap (Å)
2:F:113:GLU:O	2:F:113:GLU:HG3	2.21	0.40
2:F:37:PRO:O	2:F:38:GLN:C	2.59	0.40
3:H:71:GLN:O	3:H:72:TYR:C	2.60	0.40
3:H:92:LYS:HE3	3:H:98:SER:CB	2.36	0.40
2:B:108:LEU:CD1	2:B:108:LEU:N	2.83	0.40
3:D:238:THR:CG2	3:D:239:SER:N	2.83	0.40
1:E:10:LYS:C	1:E:11:GLN:HE21	2.23	0.40
2:F:242:ILE:C	2:F:244:ARG:H	2.24	0.40
3:H:138:LYS:NZ	3:H:138:LYS:CB	2.84	0.40
3:H:44:ILE:HD12	3:H:44:ILE:N	2.36	0.40
2:B:31:VAL:HG21	2:B:52:VAL:HG23	2.03	0.40
2:F:157:VAL:HG13	2:F:157:VAL:O	2.22	0.40
2:F:165:ARG:HH11	2:F:165:ARG:CG	2.34	0.40
2:F:186(D):LYS:HE2	2:F:186(D):LYS:HB3	1.94	0.40
3:H:205:ILE:HA	3:H:210:ILE:HG21	2.03	0.40
2:B:103:ILE:HG13	2:B:212:ILE:HD11	2.04	0.40
2:B:28:PRO:CB	2:B:119:HIS:H	2.21	0.40
2:B:230:HIS:ND1	2:B:233:ARG:HB2	2.37	0.40
3:D:129:VAL:O	3:D:132:PHE:N	2.55	0.40
3:D:167:LYS:HG3	3:D:239:SER:HG	1.85	0.40
2:F:204(A):TYR:O	2:F:204(B):ASN:HB3	2.21	0.40
3:H:62:LEU:O	3:H:65:ARG:N	2.54	0.40

There are no symmetry-related clashes.

5.3 Torsion angles [i](#)

5.3.1 Protein backbone [i](#)

In the following table, the Percentiles column shows the percent Ramachandran outliers of the chain as a percentile score with respect to all X-ray entries followed by that with respect to entries of similar resolution.

The Analysed column shows the number of residues for which the backbone conformation was analysed, and the total number of residues.

Mol	Chain	Analysed	Favoured	Allowed	Outliers	Percentiles	
1	A	39/41 (95%)	28 (72%)	6 (15%)	5 (13%)	0	4
1	E	39/41 (95%)	30 (77%)	4 (10%)	5 (13%)	0	4
2	B	257/259 (99%)	195 (76%)	47 (18%)	15 (6%)	1	16

Continued on next page...

Continued from previous page...

Mol	Chain	Analysed	Favoured	Allowed	Outliers	Percentiles	
2	F	257/259 (99%)	193 (75%)	48 (19%)	16 (6%)	1	15
3	D	280/329 (85%)	201 (72%)	65 (23%)	14 (5%)	2	19
3	H	280/329 (85%)	204 (73%)	63 (22%)	13 (5%)	2	21
All	All	1152/1258 (92%)	851 (74%)	233 (20%)	68 (6%)	1	15

All (68) Ramachandran outliers are listed below:

Mol	Chain	Res	Type
1	A	1	CYS
1	A	10	LYS
2	B	24	VAL
2	B	74	THR
2	B	149(E)	GLU
2	B	195	SER
2	B	196	GLY
2	B	204(B)	ASN
3	D	206	SER
3	D	231	LEU
1	E	1	CYS
1	E	10	LYS
2	F	149(E)	GLU
2	F	195	SER
2	F	196	GLY
2	F	204(B)	ASN
3	H	206	SER
3	H	276	THR
1	A	8	GLU
1	A	9	LYS
1	A	14(A)	GLN
2	B	71	HIS
2	B	93	ARG
3	D	28	LYS
3	D	144	HIS
3	D	158	THR
3	D	276	THR
1	E	8	GLU
1	E	9	LYS
1	E	14(A)	GLN
2	F	24	VAL
2	F	71	HIS
2	F	74	THR

Continued on next page...

Continued from previous page...

Mol	Chain	Res	Type
3	H	28	LYS
3	H	144	HIS
3	H	158	THR
3	H	231	LEU
2	B	149(A)	THR
2	B	171	SER
2	B	205	ASN
3	D	87	LEU
3	D	94	GLU
3	D	157	ALA
2	F	93	ARG
2	F	171	SER
3	H	94	GLU
3	H	157	ALA
3	D	273	LYS
2	F	48	SER
2	F	149(A)	THR
2	F	205	ASN
3	H	51	GLY
2	B	48	SER
2	B	60(G)	ASN
2	B	92	PRO
3	D	51	GLY
3	D	128	ALA
2	F	60(G)	ASN
2	F	92	PRO
2	F	240	LYS
3	H	87	LEU
3	H	172	TYR
3	H	273	LYS
3	D	172	TYR
3	D	236	ASN
2	F	124	PRO
3	H	128	ALA
2	B	124	PRO

5.3.2 Protein sidechains ⓘ

In the following table, the Percentiles column shows the percent sidechain outliers of the chain as a percentile score with respect to all X-ray entries followed by that with respect to entries of similar resolution.

The Analysed column shows the number of residues for which the sidechain conformation was

analysed, and the total number of residues.

Mol	Chain	Analysed	Rotameric	Outliers	Percentiles	
1	A	35/35 (100%)	33 (94%)	2 (6%)	20	53
1	E	35/35 (100%)	33 (94%)	2 (6%)	20	53
2	B	226/226 (100%)	211 (93%)	15 (7%)	16	49
2	F	226/226 (100%)	210 (93%)	16 (7%)	14	46
3	D	260/303 (86%)	248 (95%)	12 (5%)	27	61
3	H	260/303 (86%)	246 (95%)	14 (5%)	22	55
All	All	1042/1128 (92%)	981 (94%)	61 (6%)	19	53

All (61) residues with a non-rotameric sidechain are listed below:

Mol	Chain	Res	Type
1	A	1(C)	GLU
1	A	11	GLN
2	B	54	THR
2	B	60(E)	ASP
2	B	64	LEU
2	B	67	ARG
2	B	68	ILE
2	B	74	THR
2	B	88	ILE
2	B	108	LEU
2	B	113	GLU
2	B	126	LYS
2	B	148	TRP
2	B	165	ARG
2	B	182	CYS
2	B	194	ASP
2	B	228	TYR
3	D	20	THR
3	D	37	GLN
3	D	57	ASP
3	D	76	ARG
3	D	109	THR
3	D	122	THR
3	D	142	GLN
3	D	162	ASP
3	D	194	LEU
3	D	195	VAL
3	D	237	ILE

Continued on next page...

Continued from previous page...

Mol	Chain	Res	Type
3	D	245	HIS
1	E	1(C)	GLU
1	E	11	GLN
2	F	54	THR
2	F	60(E)	ASP
2	F	64	LEU
2	F	67	ARG
2	F	68	ILE
2	F	74	THR
2	F	88	ILE
2	F	108	LEU
2	F	113	GLU
2	F	114	LEU
2	F	126	LYS
2	F	148	TRP
2	F	165	ARG
2	F	182	CYS
2	F	194	ASP
2	F	228	TYR
3	H	20	THR
3	H	37	GLN
3	H	57	ASP
3	H	109	THR
3	H	116	ARG
3	H	122	THR
3	H	142	GLN
3	H	150	THR
3	H	162	ASP
3	H	194	LEU
3	H	195	VAL
3	H	237	ILE
3	H	245	HIS
3	H	262	ARG

Some sidechains can be flipped to improve hydrogen bonding and reduce clashes. All (28) such sidechains are listed below:

Mol	Chain	Res	Type
1	A	1(K)	ASN
1	A	11	GLN
1	A	13	GLN
2	B	38	GLN
2	B	95	ASN

Continued on next page...

Continued from previous page...

Mol	Chain	Res	Type
2	B	143	ASN
3	D	15	ASN
3	D	107	GLN
3	D	119	ASN
3	D	142	GLN
3	D	166	ASN
3	D	181	HIS
3	D	203	HIS
3	D	232	ASN
1	E	1(K)	ASN
1	E	11	GLN
1	E	13	GLN
2	F	38	GLN
2	F	95	ASN
2	F	143	ASN
2	F	209	GLN
3	H	15	ASN
3	H	107	GLN
3	H	119	ASN
3	H	142	GLN
3	H	181	HIS
3	H	203	HIS
3	H	232	ASN

5.3.3 RNA ⓘ

There are no RNA molecules in this entry.

5.4 Non-standard residues in protein, DNA, RNA chains ⓘ

There are no non-standard protein/DNA/RNA residues in this entry.

5.5 Carbohydrates ⓘ

There are no monosaccharides in this entry.

5.6 Ligand geometry ⓘ

Of 5 ligands modelled in this entry, 2 are monoatomic - leaving 3 for Mogul analysis.

In the following table, the Counts columns list the number of bonds (or angles) for which Mogul statistics could be retrieved, the number of bonds (or angles) that are observed in the model and the number of bonds (or angles) that are defined in the Chemical Component Dictionary. The Link column lists molecule types, if any, to which the group is linked. The Z score for a bond length (or angle) is the number of standard deviations the observed value is removed from the expected value. A bond length (or angle) with $|Z| > 2$ is considered an outlier worth inspection. RMSZ is the root-mean-square of all Z scores of the bond lengths (or angles).

Mol	Type	Chain	Res	Link	Bond lengths			Bond angles		
					Counts	RMSZ	# $ Z > 2$	Counts	RMSZ	# $ Z > 2$
5	NAG	B	700	2	14,14,15	0.83	1 (7%)	17,19,21	0.82	1 (5%)
4	0G6	F	600	2	30,31,32	1.94	8 (26%)	37,41,42	1.13	2 (5%)
4	0G6	B	500	2	30,31,32	1.90	8 (26%)	37,41,42	1.19	3 (8%)

In the following table, the Chirals column lists the number of chiral outliers, the number of chiral centers analysed, the number of these observed in the model and the number defined in the Chemical Component Dictionary. Similar counts are reported in the Torsion and Rings columns. '-' means no outliers of that kind were identified.

Mol	Type	Chain	Res	Link	Chirals	Torsions	Rings
5	NAG	B	700	2	1/1/5/7	3/6/23/26	0/1/1/1
4	0G6	F	600	2	1/1/8/10	2/31/41/43	0/2/2/2
4	0G6	B	500	2	1/1/8/10	2/31/41/43	0/2/2/2

All (17) bond length outliers are listed below:

Mol	Chain	Res	Type	Atoms	Z	Observed(Å)	Ideal(Å)
4	F	600	0G6	O2-C2	-7.31	1.23	1.43
4	B	500	0G6	O2-C2	-7.10	1.23	1.43
4	B	500	0G6	CE2-CD2	2.99	1.45	1.38
4	F	600	0G6	CD1-CG	2.98	1.45	1.38
4	B	500	0G6	CE1-CD1	2.90	1.45	1.38
4	F	600	0G6	CE1-CD1	2.84	1.44	1.38
4	B	500	0G6	CD1-CG	2.79	1.44	1.38
4	B	500	0G6	CZ-CE2	2.76	1.45	1.38
4	F	600	0G6	CZ-CE2	2.73	1.45	1.38
4	B	500	0G6	CD2-CG	2.67	1.44	1.38
4	F	600	0G6	CD2-CG	2.65	1.44	1.38
4	F	600	0G6	C-N1	2.52	1.40	1.34
4	F	600	0G6	CE2-CD2	2.43	1.44	1.38
4	B	500	0G6	C-N1	2.29	1.39	1.34
4	B	500	0G6	CZ-CE1	2.25	1.44	1.38
5	B	700	NAG	C1-C2	2.19	1.55	1.52

Continued on next page...

Continued from previous page...

Mol	Chain	Res	Type	Atoms	Z	Observed(Å)	Ideal(Å)
4	F	600	0G6	CZ-CE1	2.02	1.43	1.38

All (6) bond angle outliers are listed below:

Mol	Chain	Res	Type	Atoms	Z	Observed(°)	Ideal(°)
4	F	600	0G6	O2-C2-C3	4.70	123.67	109.74
4	B	500	0G6	O2-C2-C3	4.27	122.40	109.74
4	B	500	0G6	CB1-CA1-N1	2.30	106.44	103.03
4	F	600	0G6	CB1-CA1-N1	2.15	106.22	103.03
4	B	500	0G6	CG2-CB2-CA2	-2.14	109.56	113.93
5	B	700	NAG	C2-N2-C7	-2.10	119.92	122.90

All (3) chirality outliers are listed below:

Mol	Chain	Res	Type	Atom
5	B	700	NAG	C1
4	F	600	0G6	C2
4	B	500	0G6	C2

All (7) torsion outliers are listed below:

Mol	Chain	Res	Type	Atoms
5	B	700	NAG	C8-C7-N2-C2
5	B	700	NAG	O7-C7-N2-C2
4	F	600	0G6	C3-C2-CA2-N2
4	F	600	0G6	C3-C2-CA2-CB2
4	B	500	0G6	C3-C2-CA2-N2
4	B	500	0G6	C3-C2-CA2-CB2
5	B	700	NAG	O5-C5-C6-O6

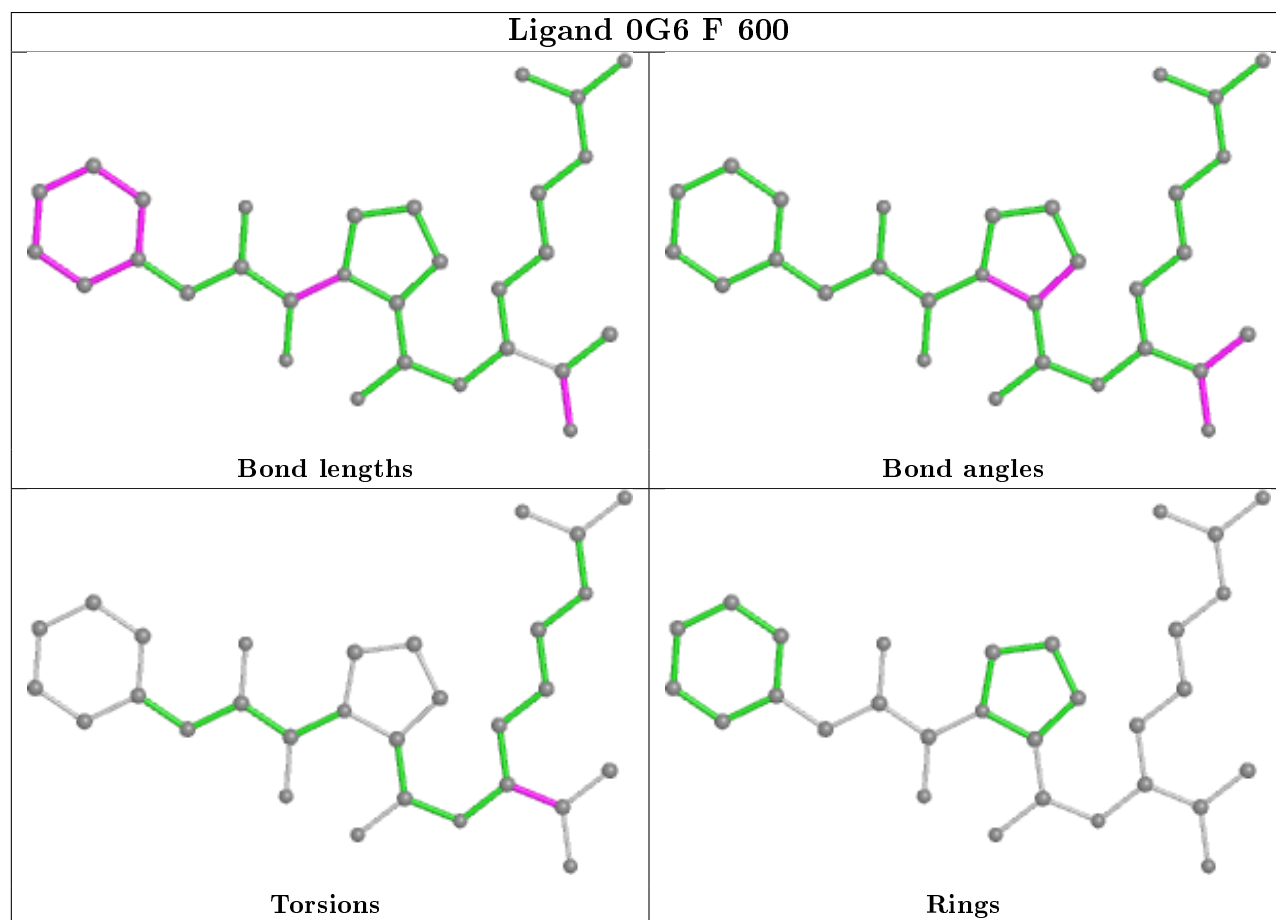
There are no ring outliers.

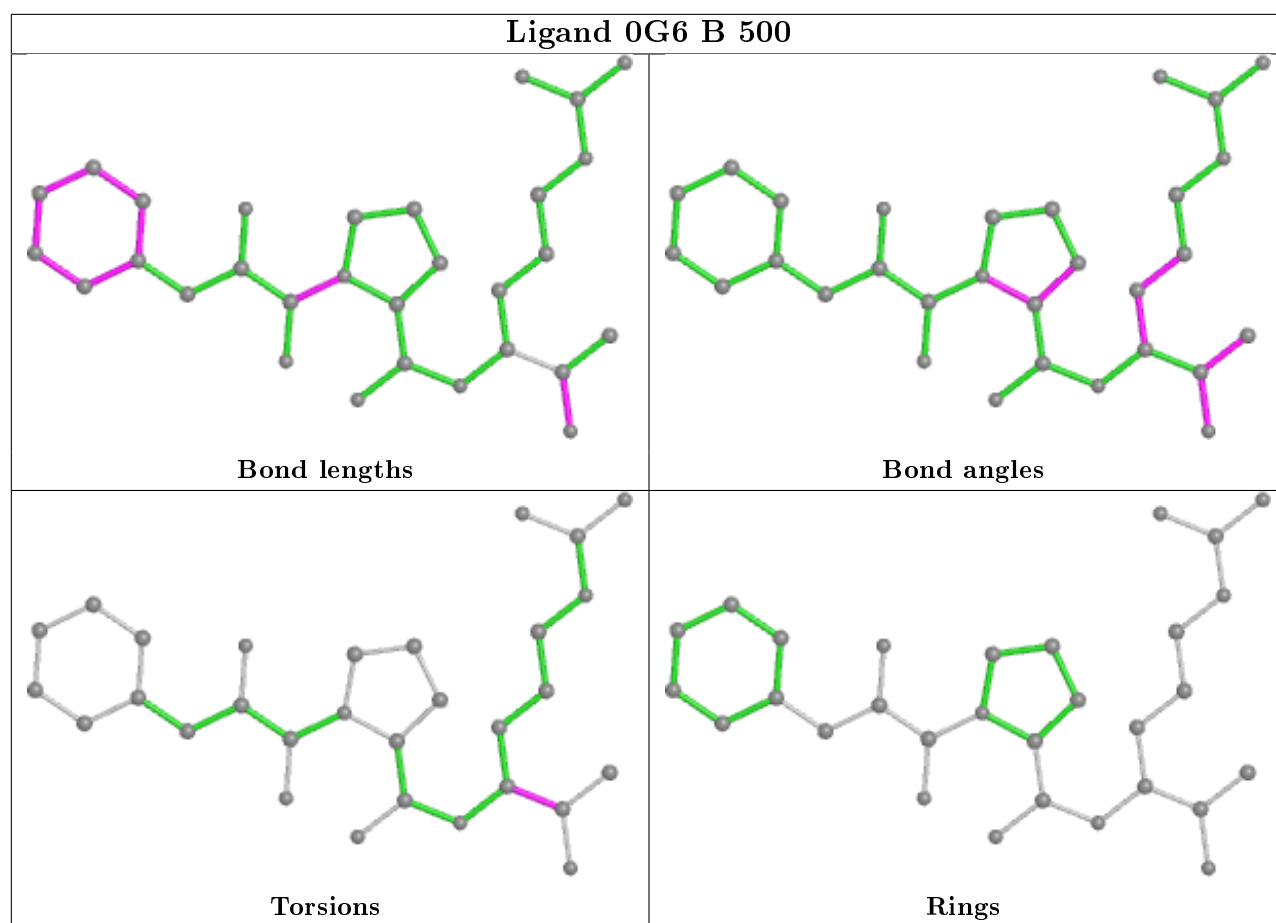
3 monomers are involved in 10 short contacts:

Mol	Chain	Res	Type	Clashes	Symm-Clashes
5	B	700	NAG	4	0
4	F	600	0G6	3	0
4	B	500	0G6	3	0

The following is a two-dimensional graphical depiction of Mogul quality analysis of bond lengths, bond angles, torsion angles, and ring geometry for all instances of the Ligand of Interest. In addition, ligands with molecular weight > 250 and outliers as shown on the validation Tables will

also be included. For torsion angles, if less than 5% of the Mogul distribution of torsion angles is within 10 degrees of the torsion angle in question, then that torsion angle is considered an outlier. Any bond that is central to one or more torsion angles identified as an outlier by Mogul will be highlighted in the graph. For rings, the root-mean-square deviation (RMSD) between the ring in question and similar rings identified by Mogul is calculated over all ring torsion angles. If the average RMSD is greater than 60 degrees and the minimal RMSD between the ring in question and any Mogul-identified rings is also greater than 60 degrees, then that ring is considered an outlier. The outliers are highlighted in purple. The color gray indicates Mogul did not find sufficient equivalents in the CSD to analyse the geometry.





5.7 Other polymers [i](#)

There are no such residues in this entry.

5.8 Polymer linkage issues [i](#)

There are no chain breaks in this entry.

6 Fit of model and data ⓘ

6.1 Protein, DNA and RNA chains ⓘ

EDS was not executed - this section is therefore empty.

6.2 Non-standard residues in protein, DNA, RNA chains ⓘ

EDS was not executed - this section is therefore empty.

6.3 Carbohydrates ⓘ

EDS was not executed - this section is therefore empty.

6.4 Ligands ⓘ

EDS was not executed - this section is therefore empty.

6.5 Other polymers ⓘ

EDS was not executed - this section is therefore empty.