



Full wwPDB X-ray Structure Validation Report ⓘ

May 24, 2020 – 01:35 am BST

PDB ID : 2A3R
Title : Crystal Structure of Human Sulfotransferase SULT1A3 in Complex with Dopamine and 3-Phosphoadenosine 5-Phosphate
Authors : Lu, J.H.; Li, H.T.; Liu, M.C.; Zhang, J.P.; Li, M.; An, X.M.; Chang, W.R.
Deposited on : 2005-06-26
Resolution : 2.60 Å(reported)

This is a Full wwPDB X-ray Structure Validation Report for a publicly released PDB entry.

We welcome your comments at validation@mail.wwpdb.org

A user guide is available at

<https://www.wwpdb.org/validation/2017/XrayValidationReportHelp>

with specific help available everywhere you see the ⓘ symbol.

The following versions of software and data (see [references ⓘ](#)) were used in the production of this report:

MolProbity : 4.02b-467
Mogul : 1.8.5 (274361), CSD as541be (2020)
Xtriage (Phenix) : 1.13
EDS : 2.11
buster-report : 1.1.7 (2018)
Percentile statistics : 20191225.v01 (using entries in the PDB archive December 25th 2019)
Refmac : 5.8.0158
CCP4 : 7.0.044 (Gargrove)
Ideal geometry (proteins) : Engh & Huber (2001)
Ideal geometry (DNA, RNA) : Parkinson et al. (1996)
Validation Pipeline (wwPDB-VP) : 2.11

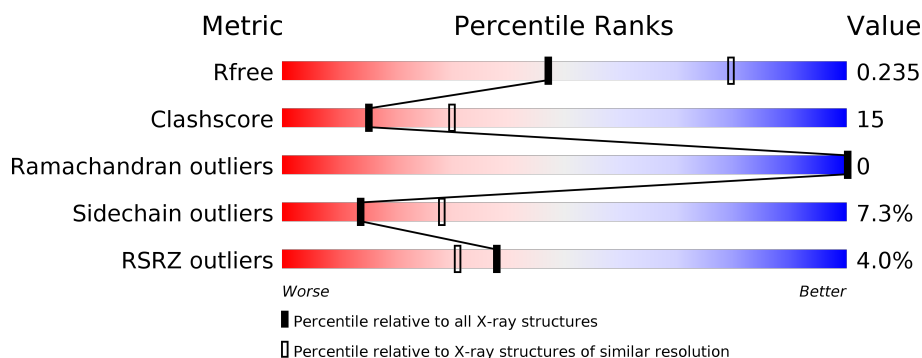
1 Overall quality at a glance

The following experimental techniques were used to determine the structure:

X-RAY DIFFRACTION

The reported resolution of this entry is 2.60 Å.

Percentile scores (ranging between 0-100) for global validation metrics of the entry are shown in the following graphic. The table shows the number of entries on which the scores are based.



Metric	Whole archive (#Entries)	Similar resolution (#Entries, resolution range(Å))
R_{free}	130704	3163 (2.60-2.60)
Clashscore	141614	3518 (2.60-2.60)
Ramachandran outliers	138981	3455 (2.60-2.60)
Sidechain outliers	138945	3455 (2.60-2.60)
RSRZ outliers	127900	3104 (2.60-2.60)

The table below summarises the geometric issues observed across the polymeric chains and their fit to the electron density. The red, orange, yellow and green segments on the lower bar indicate the fraction of residues that contain outliers for ≥ 3 , 2, 1 and 0 types of geometric quality criteria respectively. A grey segment represents the fraction of residues that are not modelled. The numeric value for each fraction is indicated below the corresponding segment, with a dot representing fractions $\leq 5\%$. The upper red bar (where present) indicates the fraction of residues that have poor fit to the electron density. The numeric value is given above the bar.

Mol	Chain	Length	Quality of chain
1	A	295	<div> <div>2%</div> <div> <div></div> <div>67%</div> <div>27%</div> <div>• •</div> </div> </div>
1	B	295	<div> <div>5%</div> <div> <div></div> <div>67%</div> <div>27%</div> <div>• •</div> </div> </div>

2 Entry composition [i](#)

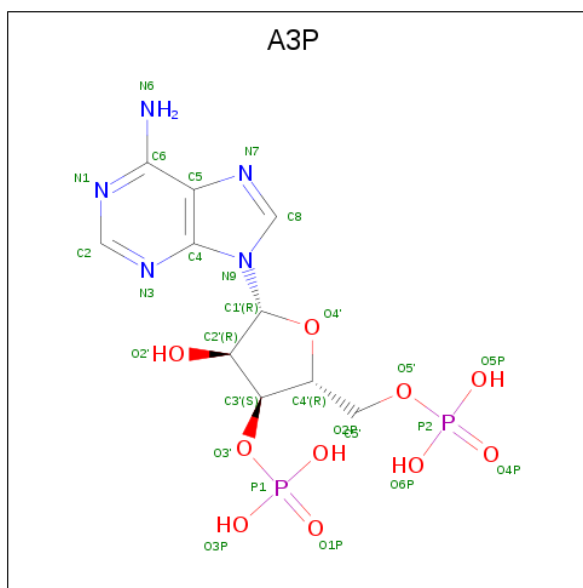
There are 4 unique types of molecules in this entry. The entry contains 4858 atoms, of which 0 are hydrogens and 0 are deuteriums.

In the tables below, the ZeroOcc column contains the number of atoms modelled with zero occupancy, the AltConf column contains the number of residues with at least one atom in alternate conformation and the Trace column contains the number of residues modelled with at most 2 atoms.

- Molecule 1 is a protein called Monoamine-sulfating phenol sulfotransferase.

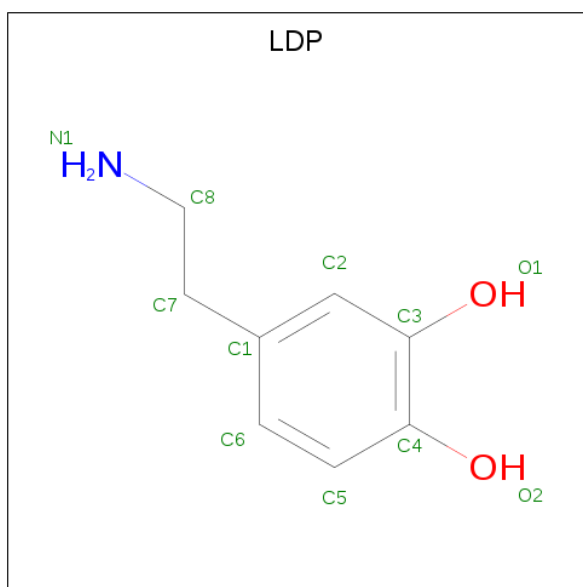
Mol	Chain	Residues	Atoms					ZeroOcc	AltConf	Trace
1	A	287	Total	C	N	O	S	0	0	0
			2346	1513	388	431	14			
1	B	287	Total	C	N	O	S	0	0	0
			2346	1513	388	431	14			

- Molecule 2 is ADENOSINE-3'-5'-DIPHOSPHATE (three-letter code: A3P) (formula: $C_{10}H_{15}N_5O_{10}P_2$).



Mol	Chain	Residues	Atoms					ZeroOcc	AltConf
2	A	1	Total	C	N	O	P	0	0
			27	10	5	10	2		
2	B	1	Total	C	N	O	P	0	0
			27	10	5	10	2		

- Molecule 3 is L-DOPAMINE (three-letter code: LDP) (formula: $C_8H_{11}NO_2$).

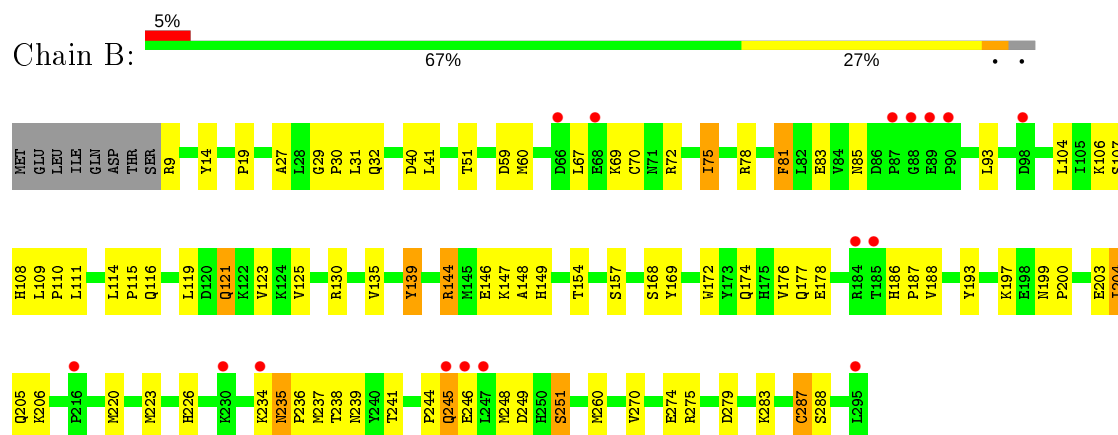
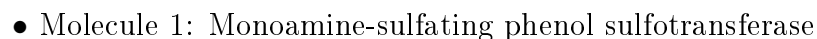


Mol	Chain	Residues	Atoms				ZeroOcc	AltConf
3	A	1	Total	C	N	O	0	0
			11	8	1	2		
3	B	1	Total	C	N	O	0	0
			11	8	1	2		

- Molecule 4 is water.

Mol	Chain	Residues	Atoms		ZeroOcc	AltConf
4	A	53	Total	O	0	0
			53	53		
4	B	37	Total	O	0	0
			37	37		

- Molecule 1: Monoamine-sulfating phenol sulfotransferase



4 Data and refinement statistics

Property	Value	Source
Space group	P 21 21 2	Depositor
Cell constants a, b, c, α , β , γ	79.26 Å 123.61 Å 73.12 Å 90.00° 90.00° 90.00°	Depositor
Resolution (Å)	20.00 – 2.60 24.85 – 2.62	Depositor EDS
% Data completeness (in resolution range)	(Not available) (20.00-2.60) 94.8 (24.85-2.62)	Depositor EDS
R_{merge}	0.12	Depositor
R_{sym}	(Not available)	Depositor
$\langle I/\sigma(I) \rangle$ ¹	3.90 (at 2.64 Å)	Xtriage
Refinement program	CNS 1.0	Depositor
R, R_{free}	0.206 , 0.243 0.200 , 0.235	Depositor DCC
R_{free} test set	1723 reflections (7.88%)	wwPDB-VP
Wilson B-factor (Å ²)	32.5	Xtriage
Anisotropy	0.882	Xtriage
Bulk solvent k_{sol} (e/Å ³), B_{sol} (Å ²)	0.30 , 50.2	EDS
L-test for twinning ²	$\langle L \rangle = 0.52$, $\langle L^2 \rangle = 0.36$	Xtriage
Estimated twinning fraction	No twinning to report.	Xtriage
F_o, F_c correlation	0.95	EDS
Total number of atoms	4858	wwPDB-VP
Average B, all atoms (Å ²)	40.0	wwPDB-VP

Xtriage's analysis on translational NCS is as follows: *The analyses of the Patterson function reveals a significant off-origin peak that is 40.17 % of the origin peak, indicating pseudo-translational symmetry. The chance of finding a peak of this or larger height randomly in a structure without pseudo-translational symmetry is equal to 2.8468e-04. The detected translational NCS is most likely also responsible for the elevated intensity ratio.*

¹Intensities estimated from amplitudes.

²Theoretical values of $\langle |L| \rangle$, $\langle L^2 \rangle$ for acentric reflections are 0.5, 0.333 respectively for untwinned datasets, and 0.375, 0.2 for perfectly twinned datasets.

5 Model quality [i](#)

5.1 Standard geometry [i](#)

Bond lengths and bond angles in the following residue types are not validated in this section: A3P, LDP

The Z score for a bond length (or angle) is the number of standard deviations the observed value is removed from the expected value. A bond length (or angle) with $|Z| > 5$ is considered an outlier worth inspection. RMSZ is the root-mean-square of all Z scores of the bond lengths (or angles).

Mol	Chain	Bond lengths		Bond angles	
		RMSZ	# $ Z > 5$	RMSZ	# $ Z > 5$
1	A	0.41	0/2417	0.71	1/3280 (0.0%)
1	B	0.40	0/2417	0.62	0/3280
All	All	0.40	0/4834	0.67	1/6560 (0.0%)

There are no bond length outliers.

All (1) bond angle outliers are listed below:

Mol	Chain	Res	Type	Atoms	Z	Observed(°)	Ideal(°)
1	A	295	LEU	CA-C-O	19.30	160.63	120.10

There are no chirality outliers.

There are no planarity outliers.

5.2 Too-close contacts [i](#)

In the following table, the Non-H and H(model) columns list the number of non-hydrogen atoms and hydrogen atoms in the chain respectively. The H(added) column lists the number of hydrogen atoms added and optimized by MolProbity. The Clashes column lists the number of clashes within the asymmetric unit, whereas Symm-Clashes lists symmetry related clashes.

Mol	Chain	Non-H	H(model)	H(added)	Clashes	Symm-Clashes
1	A	2346	0	2300	72	0
1	B	2346	0	2300	67	0
2	A	27	0	11	0	0
2	B	27	0	11	0	0
3	A	11	0	11	2	0
3	B	11	0	11	4	0
4	A	53	0	0	0	0
4	B	37	0	0	0	0

Continued on next page...

Continued from previous page...

Mol	Chain	Non-H	H(model)	H(added)	Clashes	Symm-Clashes
All	All	4858	0	4644	140	0

The all-atom clashscore is defined as the number of clashes found per 1000 atoms (including hydrogen atoms). The all-atom clashscore for this structure is 15.

All (140) close contacts within the same asymmetric unit are listed below, sorted by their clash magnitude.

Atom-1	Atom-2	Interatomic distance (Å)	Clash overlap (Å)
1:A:146:GLU:OE1	3:A:297:LDP:H82	1.67	0.93
1:A:71:ASN:ND2	1:A:237:MET:HG3	1.87	0.90
1:B:146:GLU:OE1	3:B:297:LDP:H82	1.71	0.88
1:A:71:ASN:HD22	1:A:237:MET:HG3	1.37	0.86
1:B:121:GLN:HA	1:B:121:GLN:HE21	1.50	0.77
1:A:144:ARG:CB	1:A:144:ARG:HH11	2.00	0.74
1:B:144:ARG:HH11	1:B:144:ARG:CB	2.00	0.73
1:B:59:ASP:OD2	1:B:78:ARG:HD2	1.91	0.71
1:A:9:ARG:HH21	1:A:147:LYS:HD3	1.58	0.69
1:B:235:ASN:HD22	1:B:236:PRO:HD2	1.57	0.68
1:A:121:GLN:HA	1:A:121:GLN:HE21	1.59	0.68
1:B:275:ARG:HG2	1:B:275:ARG:HH11	1.57	0.68
1:A:146:GLU:OE1	3:A:297:LDP:C8	2.42	0.67
1:A:75:ILE:HG23	1:A:78:ARG:NH2	2.10	0.67
1:A:275:ARG:HG2	1:A:275:ARG:HH11	1.59	0.66
1:A:235:ASN:ND2	1:A:237:MET:H	1.94	0.65
1:B:67:LEU:HD11	1:B:226:HIS:CD2	2.33	0.64
1:B:9:ARG:HH21	1:B:147:LYS:HD3	1.64	0.63
1:B:146:GLU:OE1	3:B:297:LDP:C8	2.45	0.62
1:B:111:LEU:HD12	1:B:178:GLU:HB3	1.81	0.62
1:A:83:GLU:HG2	1:A:109:LEU:HD21	1.81	0.61
1:B:75:ILE:N	1:B:75:ILE:HD12	2.14	0.61
1:A:59:ASP:OD2	1:A:78:ARG:HD2	2.01	0.61
1:B:29:GLY:O	1:B:32:GLN:HG3	2.02	0.60
1:B:75:ILE:HG23	1:B:78:ARG:NH2	2.16	0.59
1:A:41:LEU:HB3	1:A:104:LEU:HD23	1.84	0.59
1:A:111:LEU:HD12	1:A:178:GLU:HB3	1.83	0.59
1:A:67:LEU:HD11	1:A:226:HIS:CD2	2.37	0.58
1:A:75:ILE:N	1:A:75:ILE:HD12	2.19	0.58
1:B:144:ARG:HB3	1:B:144:ARG:HH11	1.68	0.58
1:A:9:ARG:NH2	1:A:147:LYS:HD3	2.17	0.58
1:A:146:GLU:OE2	1:A:148:ALA:HB3	2.04	0.57
1:B:146:GLU:OE2	1:B:148:ALA:HB3	2.04	0.57

Continued on next page...

Continued from previous page...

Atom-1	Atom-2	Interatomic distance (Å)	Clash overlap (Å)
1:A:108:HIS:HB2	1:A:169:TYR:CZ	2.40	0.56
1:B:9:ARG:HD3	1:B:149:HIS:O	2.05	0.56
1:A:270:VAL:O	1:A:274:GLU:HG3	2.04	0.56
1:B:168:SER:O	1:B:169:TYR:HB2	2.06	0.56
1:B:69:LYS:O	1:B:72:ARG:HG2	2.06	0.56
1:B:204:ILE:HD12	1:B:204:ILE:O	2.06	0.55
1:B:40:ASP:O	1:B:123:VAL:HG13	2.07	0.55
1:A:144:ARG:HH11	1:A:144:ARG:HB3	1.68	0.55
1:B:83:GLU:HG2	1:B:109:LEU:HD21	1.89	0.55
1:B:186:HIS:CG	1:B:187:PRO:HD2	2.43	0.54
1:B:41:LEU:HB3	1:B:104:LEU:HD23	1.88	0.54
1:A:168:SER:O	1:A:169:TYR:HB2	2.08	0.54
1:A:9:ARG:HD3	1:A:149:HIS:O	2.07	0.54
1:B:9:ARG:NH2	1:B:147:LYS:HD3	2.23	0.53
1:A:275:ARG:NH1	1:A:275:ARG:HG2	2.24	0.53
1:A:204:ILE:O	1:A:204:ILE:HD12	2.10	0.52
1:B:275:ARG:HG2	1:B:275:ARG:NH1	2.24	0.52
1:B:9:ARG:HH21	1:B:147:LYS:NZ	2.08	0.52
1:B:270:VAL:O	1:B:274:GLU:HG3	2.10	0.52
1:A:222:PHE:CE1	1:A:226:HIS:CE1	2.98	0.51
1:B:108:HIS:HB2	1:B:169:TYR:CZ	2.45	0.51
1:A:203:GLU:OE1	1:A:206:LYS:HE3	2.11	0.51
1:B:235:ASN:HD22	1:B:236:PRO:CD	2.22	0.51
1:B:239:ASN:OD1	1:B:241:THR:HG23	2.10	0.50
1:A:174:GLN:O	1:A:178:GLU:HG3	2.11	0.50
1:B:14:TYR:CE2	1:B:19:PRO:HG3	2.47	0.50
1:A:40:ASP:O	1:A:123:VAL:HG13	2.12	0.50
1:B:186:HIS:CD2	1:B:187:PRO:HD2	2.47	0.49
1:A:60:MET:HG2	1:A:70:CYS:SG	2.52	0.49
1:A:91:SER:OG	1:A:94:GLU:HB2	2.12	0.49
1:A:245:GLN:HA	1:A:248:MET:O	2.11	0.49
1:A:29:GLY:O	1:A:32:GLN:HG3	2.13	0.49
1:B:125:VAL:HB	1:B:188:VAL:HG22	1.95	0.48
1:A:177:GLN:HG2	1:A:287:CYS:SG	2.53	0.48
1:B:200:PRO:O	1:B:204:ILE:HG23	2.12	0.48
1:B:177:GLN:HG2	1:B:287:CYS:SG	2.53	0.48
1:A:186:HIS:CG	1:A:187:PRO:HD2	2.48	0.48
1:B:121:GLN:HA	1:B:121:GLN:NE2	2.25	0.48
1:A:51:THR:HG21	1:A:106:LYS:HE3	1.96	0.48
1:A:235:ASN:HD21	1:A:237:MET:HB2	1.79	0.47
1:B:27:ALA:O	1:B:30:PRO:HD2	2.14	0.47

Continued on next page...

Continued from previous page...

Atom-1	Atom-2	Interatomic distance (Å)	Clash overlap (Å)
1:A:9:ARG:HH21	1:A:147:LYS:NZ	2.12	0.47
1:B:203:GLU:OE1	1:B:206:LYS:HE3	2.13	0.47
1:A:108:HIS:HB2	1:A:169:TYR:CE1	2.50	0.46
1:B:60:MET:HG2	1:B:70:CYS:SG	2.55	0.46
1:B:75:ILE:CD1	1:B:75:ILE:N	2.78	0.46
1:A:200:PRO:O	1:A:204:ILE:HG23	2.16	0.46
1:A:235:ASN:HD22	1:A:236:PRO:N	2.14	0.46
1:A:235:ASN:HD22	1:A:236:PRO:CD	2.29	0.45
1:A:279:ASP:OD2	1:A:283:LYS:NZ	2.48	0.45
1:B:235:ASN:O	1:B:239:ASN:ND2	2.48	0.45
1:A:75:ILE:HG13	1:A:237:MET:O	2.17	0.45
1:A:116:GLN:NE2	1:A:119:LEU:HD12	2.32	0.45
1:B:204:ILE:HD13	1:B:223:MET:HE1	1.98	0.45
1:A:235:ASN:HD22	1:A:236:PRO:HD2	1.80	0.45
1:A:9:ARG:HH21	1:A:147:LYS:CD	2.27	0.44
1:A:75:ILE:HG13	1:A:238:THR:HA	1.98	0.44
1:B:245:GLN:HA	1:B:248:MET:O	2.17	0.44
1:B:75:ILE:H	1:B:75:ILE:HD12	1.80	0.44
1:A:125:VAL:HB	1:A:188:VAL:HG22	1.99	0.44
1:A:18:VAL:HA	1:A:19:PRO:HD3	1.87	0.44
1:A:75:ILE:CG1	1:A:238:THR:HA	2.47	0.44
1:B:116:GLN:NE2	1:B:119:LEU:HD12	2.32	0.44
1:B:75:ILE:HG13	1:B:238:THR:HA	1.99	0.44
1:A:186:HIS:CD2	1:A:187:PRO:HD2	2.53	0.44
1:A:83:GLU:CD	1:A:109:LEU:HG	2.38	0.44
1:A:27:ALA:HB2	1:A:85:ASN:HB2	1.99	0.44
1:B:75:ILE:HG13	1:B:237:MET:O	2.17	0.43
1:A:43:ILE:HD11	1:A:58:LEU:HD12	2.00	0.43
1:B:75:ILE:H	1:B:75:ILE:CD1	2.30	0.43
1:A:83:GLU:HG3	1:A:109:LEU:HD11	2.01	0.43
1:B:244:PRO:HB2	1:B:246:GLU:HG2	2.01	0.43
1:B:75:ILE:CG1	1:B:238:THR:HA	2.48	0.43
1:A:116:GLN:HE22	1:A:119:LEU:HD12	1.84	0.42
1:B:27:ALA:HB2	1:B:85:ASN:HB2	2.00	0.42
1:B:109:LEU:HA	1:B:110:PRO:HD3	1.84	0.42
1:A:42:LEU:HB3	1:A:125:VAL:HG22	2.01	0.42
1:B:51:THR:HG21	1:B:106:LYS:HE3	2.00	0.42
1:A:172:TRP:O	1:A:176:VAL:HG22	2.18	0.42
1:B:154:THR:OG1	1:B:157:SER:HB2	2.19	0.42
1:A:239:ASN:OD1	1:A:241:THR:HG23	2.19	0.42
1:B:130:ARG:HG3	1:B:193:TYR:HB3	2.02	0.42

Continued on next page...

Continued from previous page...

Atom-1	Atom-2	Interatomic distance (Å)	Clash overlap (Å)
1:A:99:THR:HA	1:A:100:PRO:HD3	1.83	0.42
1:A:106:LYS:HG2	1:A:107:SER:N	2.35	0.41
1:B:106:LYS:HG2	1:B:107:SER:N	2.36	0.41
1:B:108:HIS:HB2	1:B:169:TYR:CE1	2.55	0.41
3:B:297:LDP:N1	3:B:297:LDP:H6	2.34	0.41
1:A:121:GLN:NE2	1:A:121:GLN:HA	2.31	0.41
1:A:269:THR:OG1	1:A:272:GLN:HG3	2.19	0.41
1:B:81:PHE:HE2	3:B:297:LDP:C2	2.33	0.41
1:B:31:LEU:HA	1:B:31:LEU:HD23	1.91	0.41
1:B:135:VAL:O	1:B:139:TYR:HB2	2.20	0.41
1:B:204:ILE:HD12	1:B:204:ILE:C	2.40	0.41
1:A:27:ALA:O	1:A:30:PRO:HD2	2.20	0.41
1:B:83:GLU:CD	1:B:109:LEU:HG	2.41	0.41
1:A:204:ILE:C	1:A:204:ILE:HD12	2.41	0.41
1:B:114:LEU:HA	1:B:115:PRO:HD3	1.97	0.41
1:B:9:ARG:HH21	1:B:147:LYS:CD	2.33	0.41
1:B:172:TRP:O	1:B:176:VAL:HG22	2.21	0.41
1:B:249:ASP:OD1	1:B:251:SER:OG	2.33	0.41
1:A:235:ASN:HD22	1:A:235:ASN:C	2.23	0.40
1:A:69:LYS:O	1:A:72:ARG:HG2	2.21	0.40
1:A:66:ASP:OD1	1:A:69:LYS:N	2.52	0.40
1:A:182:LEU:HD13	1:A:186:HIS:HB3	2.02	0.40
1:A:204:ILE:HG13	1:A:205:GLN:N	2.34	0.40
1:A:220:MET:HB2	1:A:220:MET:HE2	1.94	0.40
1:B:279:ASP:OD2	1:B:283:LYS:NZ	2.54	0.40

There are no symmetry-related clashes.

5.3 Torsion angles

5.3.1 Protein backbone

In the following table, the Percentiles column shows the percent Ramachandran outliers of the chain as a percentile score with respect to all X-ray entries followed by that with respect to entries of similar resolution.

The Analysed column shows the number of residues for which the backbone conformation was analysed, and the total number of residues.

Mol	Chain	Analysed	Favoured	Allowed	Outliers	Percentiles	
1	A	285/295 (97%)	267 (94%)	18 (6%)	0	100	100

Continued on next page...

Continued from previous page...

Mol	Chain	Analysed	Favoured	Allowed	Outliers	Percentiles	
1	B	285/295 (97%)	265 (93%)	20 (7%)	0	100	100
All	All	570/590 (97%)	532 (93%)	38 (7%)	0	100	100

There are no Ramachandran outliers to report.

5.3.2 Protein sidechains ⓘ

In the following table, the Percentiles column shows the percent sidechain outliers of the chain as a percentile score with respect to all X-ray entries followed by that with respect to entries of similar resolution.

The Analysed column shows the number of residues for which the sidechain conformation was analysed, and the total number of residues.

Mol	Chain	Analysed	Rotameric	Outliers	Percentiles	
1	A	259/267 (97%)	240 (93%)	19 (7%)	14	28
1	B	259/267 (97%)	240 (93%)	19 (7%)	14	28
All	All	518/534 (97%)	480 (93%)	38 (7%)	14	28

All (38) residues with a non-rotameric sidechain are listed below:

Mol	Chain	Res	Type
1	A	13	GLU
1	A	75	ILE
1	A	81	PHE
1	A	93	LEU
1	A	94	GLU
1	A	121	GLN
1	A	139	TYR
1	A	144	ARG
1	A	197	LYS
1	A	199	ASN
1	A	204	ILE
1	A	205	GLN
1	A	218	GLU
1	A	220	MET
1	A	234	LYS
1	A	235	ASN
1	A	245	GLN
1	A	246	GLU

Continued on next page...

Continued from previous page...

Mol	Chain	Res	Type
1	A	287	CYS
1	B	75	ILE
1	B	81	PHE
1	B	93	LEU
1	B	121	GLN
1	B	139	TYR
1	B	144	ARG
1	B	174	GLN
1	B	197	LYS
1	B	199	ASN
1	B	204	ILE
1	B	205	GLN
1	B	220	MET
1	B	234	LYS
1	B	235	ASN
1	B	245	GLN
1	B	251	SER
1	B	260	MET
1	B	287	CYS
1	B	288	SER

Some sidechains can be flipped to improve hydrogen bonding and reduce clashes. All (13) such sidechains are listed below:

Mol	Chain	Res	Type
1	A	71	ASN
1	A	116	GLN
1	A	121	GLN
1	A	141	HIS
1	A	186	HIS
1	A	199	ASN
1	A	235	ASN
1	B	116	GLN
1	B	121	GLN
1	B	186	HIS
1	B	199	ASN
1	B	226	HIS
1	B	235	ASN

5.3.3 RNA ⓘ

There are no RNA molecules in this entry.

5.4 Non-standard residues in protein, DNA, RNA chains ⓘ

There are no non-standard protein/DNA/RNA residues in this entry.

5.5 Carbohydrates ⓘ

There are no carbohydrates in this entry.

5.6 Ligand geometry ⓘ

4 ligands are modelled in this entry.

In the following table, the Counts columns list the number of bonds (or angles) for which Mogul statistics could be retrieved, the number of bonds (or angles) that are observed in the model and the number of bonds (or angles) that are defined in the Chemical Component Dictionary. The Link column lists molecule types, if any, to which the group is linked. The Z score for a bond length (or angle) is the number of standard deviations the observed value is removed from the expected value. A bond length (or angle) with $|Z| > 2$ is considered an outlier worth inspection. RMSZ is the root-mean-square of all Z scores of the bond lengths (or angles).

Mol	Type	Chain	Res	Link	Bond lengths			Bond angles		
					Counts	RMSZ	# $ Z > 2$	Counts	RMSZ	# $ Z > 2$
3	LDP	B	297	-	10,11,11	4.33	7 (70%)	13,14,14	0.80	0
2	A3P	B	296	-	26,29,29	1.11	3 (11%)	31,45,45	1.13	1 (3%)
2	A3P	A	296	-	26,29,29	1.22	3 (11%)	31,45,45	1.18	1 (3%)
3	LDP	A	297	-	10,11,11	4.32	7 (70%)	13,14,14	0.79	0

In the following table, the Chirals column lists the number of chiral outliers, the number of chiral centers analysed, the number of these observed in the model and the number defined in the Chemical Component Dictionary. Similar counts are reported in the Torsion and Rings columns. '-' means no outliers of that kind were identified.

Mol	Type	Chain	Res	Link	Chirals	Torsions	Rings
3	LDP	B	297	-	-	2/3/3/3	0/1/1/1
2	A3P	B	296	-	-	4/11/31/31	0/3/3/3
2	A3P	A	296	-	-	4/11/31/31	0/3/3/3
3	LDP	A	297	-	-	2/3/3/3	0/1/1/1

All (20) bond length outliers are listed below:

Mol	Chain	Res	Type	Atoms	Z	Observed(Å)	Ideal(Å)
3	A	297	LDP	C3-C4	6.86	1.51	1.40

Continued on next page...

Continued from previous page...

Mol	Chain	Res	Type	Atoms	Z	Observed(Å)	Ideal(Å)
3	B	297	LDP	C3-C4	6.86	1.51	1.40
3	A	297	LDP	C2-C1	6.35	1.50	1.39
3	B	297	LDP	C2-C1	6.34	1.50	1.39
3	B	297	LDP	C2-C3	6.19	1.47	1.38
3	A	297	LDP	C2-C3	6.16	1.47	1.38
3	A	297	LDP	C6-C1	5.70	1.51	1.38
3	B	297	LDP	C6-C1	5.68	1.51	1.38
3	B	297	LDP	C5-C4	3.54	1.45	1.39
3	A	297	LDP	C5-C4	3.51	1.45	1.39
3	B	297	LDP	C7-C1	3.04	1.60	1.51
3	A	297	LDP	C7-C1	3.02	1.60	1.51
2	A	296	A3P	C2-N3	2.89	1.36	1.32
2	B	296	A3P	C2-N3	2.67	1.36	1.32
3	B	297	LDP	C5-C6	2.35	1.43	1.38
3	A	297	LDP	C5-C6	2.34	1.43	1.38
2	A	296	A3P	O4'-C1'	2.21	1.44	1.41
2	B	296	A3P	C2-N1	2.15	1.37	1.33
2	A	296	A3P	C4-N3	2.09	1.38	1.35
2	B	296	A3P	C4-N3	2.06	1.38	1.35

All (2) bond angle outliers are listed below:

Mol	Chain	Res	Type	Atoms	Z	Observed(°)	Ideal(°)
2	A	296	A3P	O4'-C1'-C2'	-2.90	102.69	106.93
2	B	296	A3P	O4'-C1'-C2'	-2.66	103.04	106.93

There are no chirality outliers.

All (12) torsion outliers are listed below:

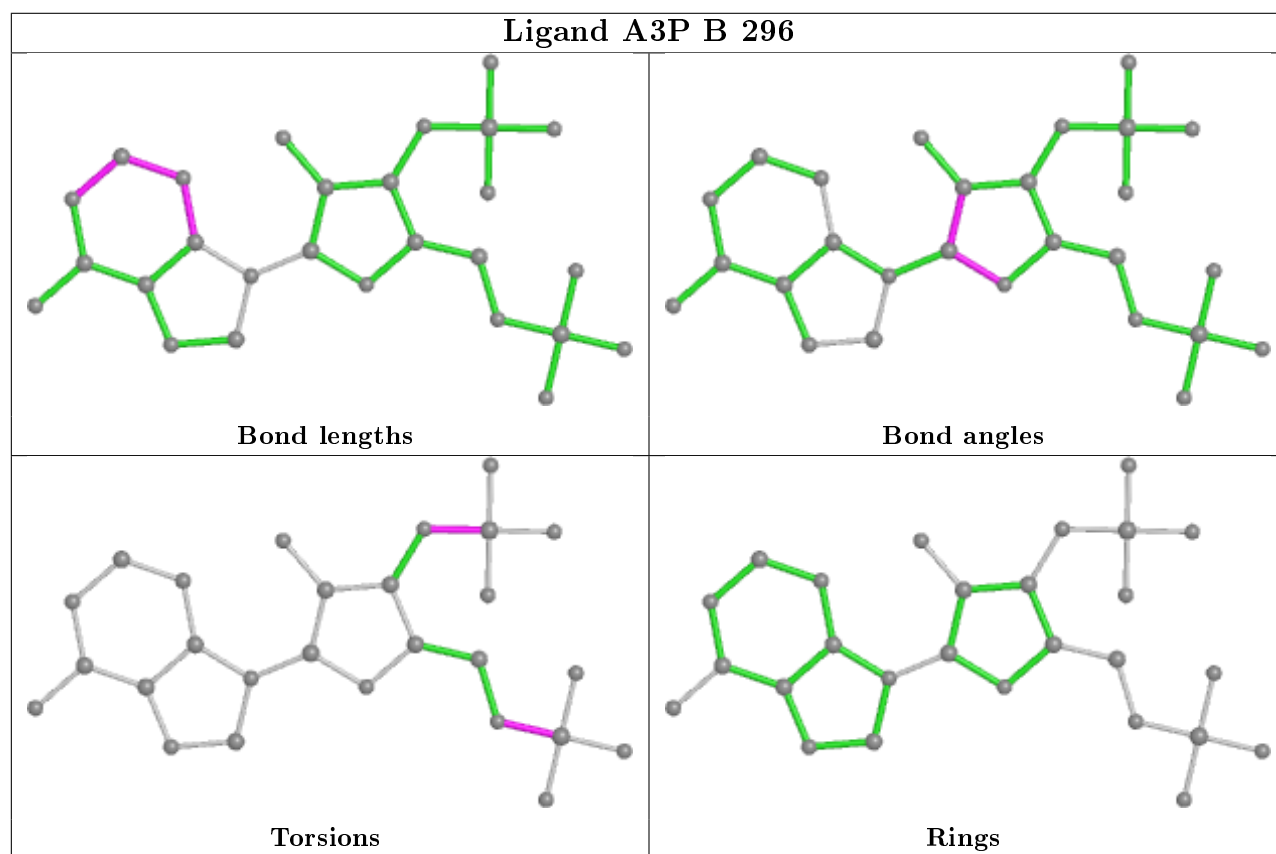
Mol	Chain	Res	Type	Atoms
2	B	296	A3P	C5'-O5'-P2-O4P
2	B	296	A3P	C5'-O5'-P2-O5P
2	A	296	A3P	C5'-O5'-P2-O5P
2	A	296	A3P	C5'-O5'-P2-O4P
2	B	296	A3P	C3'-O3'-P1-O3P
2	A	296	A3P	C3'-O3'-P1-O3P
3	B	297	LDP	C6-C1-C7-C8
3	A	297	LDP	C6-C1-C7-C8
3	B	297	LDP	C2-C1-C7-C8
3	A	297	LDP	C2-C1-C7-C8
2	B	296	A3P	C5'-O5'-P2-O6P
2	A	296	A3P	C5'-O5'-P2-O6P

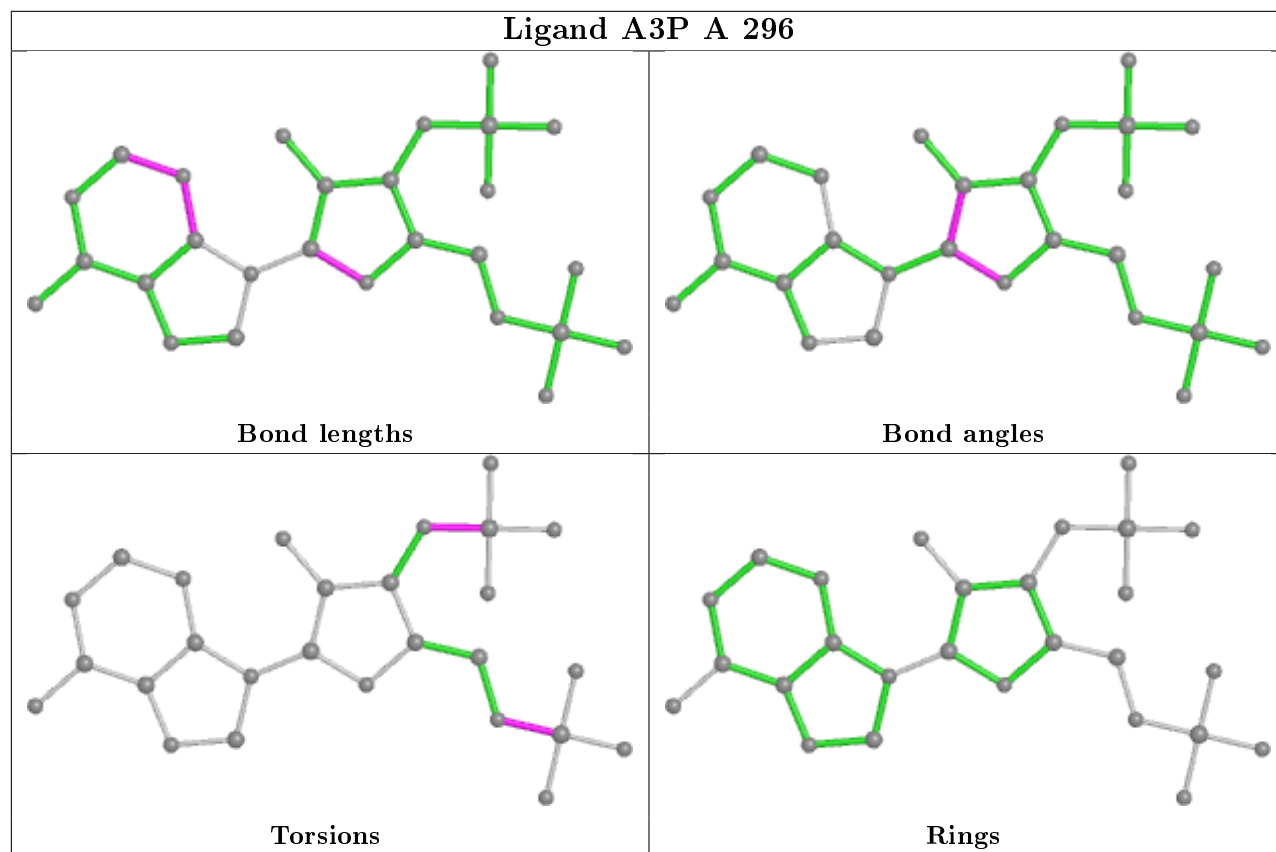
There are no ring outliers.

2 monomers are involved in 6 short contacts:

Mol	Chain	Res	Type	Clashes	Symm-Clashes
3	B	297	LDP	4	0
3	A	297	LDP	2	0

The following is a two-dimensional graphical depiction of Mogul quality analysis of bond lengths, bond angles, torsion angles, and ring geometry for all instances of the Ligand of Interest. In addition, ligands with molecular weight > 250 and outliers as shown on the validation Tables will also be included. For torsion angles, if less than 5% of the Mogul distribution of torsion angles is within 10 degrees of the torsion angle in question, then that torsion angle is considered an outlier. Any bond that is central to one or more torsion angles identified as an outlier by Mogul will be highlighted in the graph. For rings, the root-mean-square deviation (RMSD) between the ring in question and similar rings identified by Mogul is calculated over all ring torsion angles. If the average RMSD is greater than 60 degrees and the minimal RMSD between the ring in question and any Mogul-identified rings is also greater than 60 degrees, then that ring is considered an outlier. The outliers are highlighted in purple. The color gray indicates Mogul did not find sufficient equivalents in the CSD to analyse the geometry.





5.7 Other polymers [i](#)

There are no such residues in this entry.

5.8 Polymer linkage issues [i](#)

There are no chain breaks in this entry.

6 Fit of model and data

6.1 Protein, DNA and RNA chains

In the following table, the column labelled ‘#RSRZ> 2’ contains the number (and percentage) of RSRZ outliers, followed by percent RSRZ outliers for the chain as percentile scores relative to all X-ray entries and entries of similar resolution. The OWAB column contains the minimum, median, 95th percentile and maximum values of the occupancy-weighted average B-factor per residue. The column labelled ‘Q< 0.9’ lists the number of (and percentage) of residues with an average occupancy less than 0.9.

Mol	Chain	Analysed	<RSRZ>	#RSRZ>2	OWAB(Å ²)	Q<0.9
1	A	287/295 (97%)	-0.14	7 (2%) 59 53	14, 37, 65, 80	0
1	B	287/295 (97%)	0.05	16 (5%) 24 19	19, 45, 66, 79	0
All	All	574/590 (97%)	-0.04	23 (4%) 38 31	14, 40, 66, 80	0

All (23) RSRZ outliers are listed below:

Mol	Chain	Res	Type	RSRZ
1	B	246	GLU	3.9
1	A	68	GLU	3.7
1	B	245	GLN	3.6
1	B	295	LEU	3.6
1	B	87	PRO	3.5
1	A	295	LEU	2.9
1	B	90	PRO	2.7
1	A	286	GLY	2.7
1	B	247	LEU	2.7
1	A	71	ASN	2.6
1	B	66	ASP	2.3
1	B	98	ASP	2.3
1	B	185	THR	2.3
1	B	89	GLU	2.3
1	A	69	LYS	2.3
1	B	184	ARG	2.3
1	A	234	LYS	2.3
1	B	88	GLY	2.2
1	B	68	GLU	2.2
1	B	234	LYS	2.2
1	A	67	LEU	2.1
1	B	216	PRO	2.1
1	B	230	LYS	2.0

6.2 Non-standard residues in protein, DNA, RNA chains [i](#)

There are no non-standard protein/DNA/RNA residues in this entry.

6.3 Carbohydrates [i](#)

There are no carbohydrates in this entry.

6.4 Ligands [i](#)

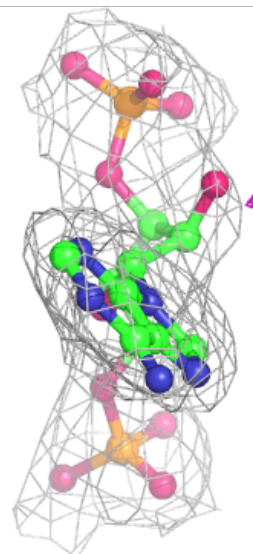
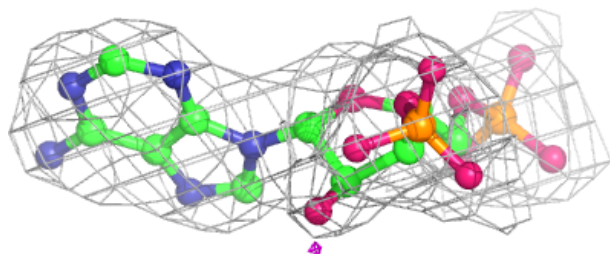
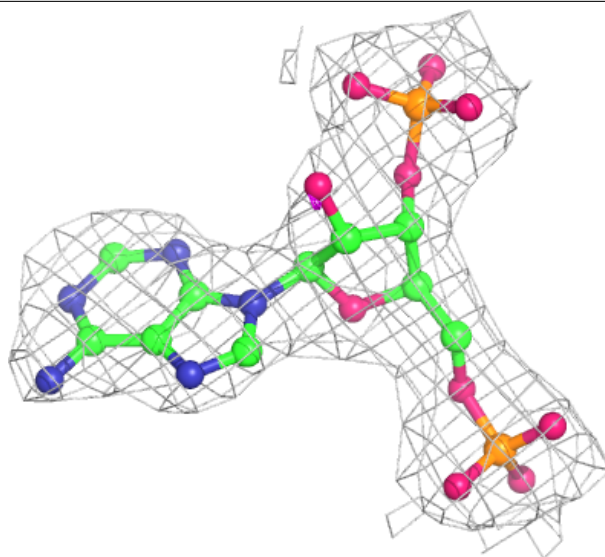
In the following table, the Atoms column lists the number of modelled atoms in the group and the number defined in the chemical component dictionary. The B-factors column lists the minimum, median, 95th percentile and maximum values of B factors of atoms in the group. The column labelled 'Q< 0.9' lists the number of atoms with occupancy less than 0.9.

Mol	Type	Chain	Res	Atoms	RSCC	RSR	B-factors(\AA^2)	Q<0.9
3	LDP	B	297	11/11	0.90	0.30	40,47,53,54	0
3	LDP	A	297	11/11	0.91	0.37	40,47,53,54	0
2	A3P	B	296	27/27	0.96	0.14	26,29,31,32	0
2	A3P	A	296	27/27	0.97	0.14	28,34,37,38	0

The following is a graphical depiction of the model fit to experimental electron density of all instances of the Ligand of Interest. In addition, ligands with molecular weight > 250 and outliers as shown on the geometry validation Tables will also be included. Each fit is shown from different orientation to approximate a three-dimensional view.

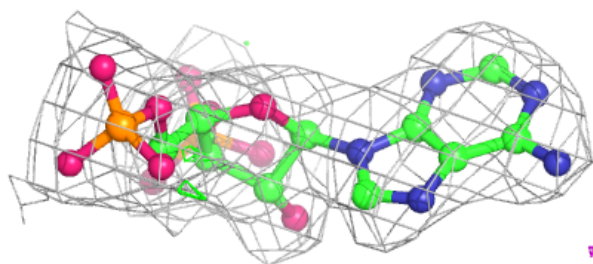
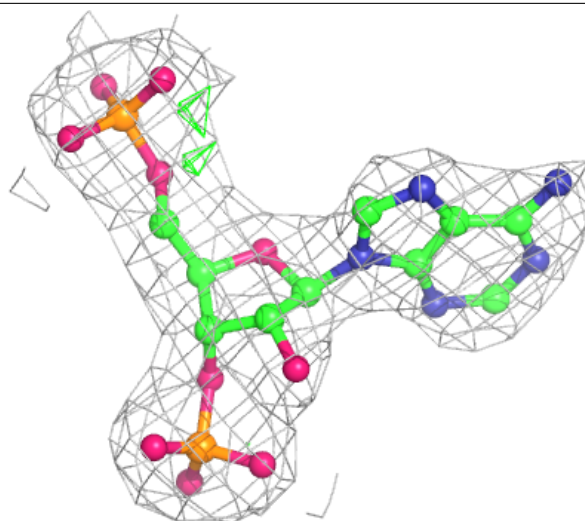
Electron density around A3P B 296:

$2mF_o-DF_c$ (at 0.7 rmsd) in gray
 mF_o-DF_c (at 3 rmsd) in purple (negative)
and green (positive)



Electron density around A3P A 296:

$2mF_o-DF_c$ (at 0.7 rmsd) in gray
 mF_o-DF_c (at 3 rmsd) in purple (negative)
and green (positive)



6.5 Other polymers [i](#)

There are no such residues in this entry.