



Full wwPDB X-ray Structure Validation Report ⓘ

Aug 30, 2020 – 01:10 PM BST

PDB ID : 5A4V
Title : AtGSTF2 from Arabidopsis thaliana in complex with quercetin
Authors : Ahmad, L.; Rylott, E.; Bruce, N.C.; Edwards, R.; Grogan, G.
Deposited on : 2015-06-15
Resolution : 2.38 Å(reported)

This is a Full wwPDB X-ray Structure Validation Report for a publicly released PDB entry.

We welcome your comments at validation@mail.wwpdb.org

A user guide is available at

<https://www.wwpdb.org/validation/2017/XrayValidationReportHelp>

with specific help available everywhere you see the ⓘ symbol.

The following versions of software and data (see [references ⓘ](#)) were used in the production of this report:

MolProbity : 4.02b-467
Mogul : 1.8.5 (274361), CSD as541be (2020)
Xtriage (Phenix) : 1.13
EDS : 2.13
buster-report : 1.1.7 (2018)
Percentile statistics : 20191225.v01 (using entries in the PDB archive December 25th 2019)
Refmac : 5.8.0158
CCP4 : 7.0.044 (Gargrove)
Ideal geometry (proteins) : Engh & Huber (2001)
Ideal geometry (DNA, RNA) : Parkinson et al. (1996)
Validation Pipeline (wwPDB-VP) : 2.13

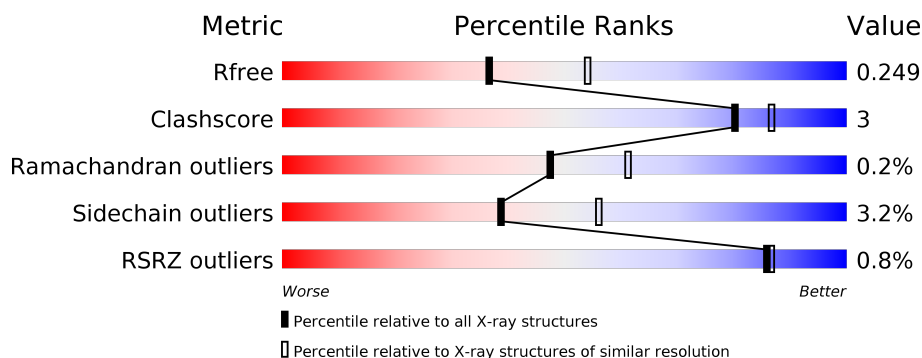
1 Overall quality at a glance

The following experimental techniques were used to determine the structure:

X-RAY DIFFRACTION

The reported resolution of this entry is 2.38 Å.

Percentile scores (ranging between 0-100) for global validation metrics of the entry are shown in the following graphic. The table shows the number of entries on which the scores are based.



Metric	Whole archive (#Entries)	Similar resolution (#Entries, resolution range(Å))
R_{free}	130704	5509 (2.40-2.36)
Clashscore	141614	6082 (2.40-2.36)
Ramachandran outliers	138981	5973 (2.40-2.36)
Sidechain outliers	138945	5975 (2.40-2.36)
RSRZ outliers	127900	5397 (2.40-2.36)

The table below summarises the geometric issues observed across the polymeric chains and their fit to the electron density. The red, orange, yellow and green segments on the lower bar indicate the fraction of residues that contain outliers for ≥ 3 , 2, 1 and 0 types of geometric quality criteria respectively. A grey segment represents the fraction of residues that are not modelled. The numeric value for each fraction is indicated below the corresponding segment, with a dot representing fractions $\leq 5\%$. The upper red bar (where present) indicates the fraction of residues that have poor fit to the electron density. The numeric value is given above the bar.

Mol	Chain	Length	Quality of chain
1	A	212	<div> <div>%</div> <div> <div></div> <div>92%</div> <div>7%</div> </div> </div>
1	B	212	<div> <div></div> <div> <div>90%</div> <div>8%</div> </div> </div>
1	C	212	<div> <div>2%</div> <div> <div></div> <div>92%</div> <div>7%</div> </div> </div>
1	D	212	<div> <div></div> <div> <div>92%</div> <div>6%</div> </div> </div>
1	E	212	<div> <div></div> <div> <div>88%</div> <div>9%</div> </div> </div>
1	F	212	<div> <div>%</div> <div> <div></div> <div>89%</div> <div>6%</div> </div> </div>

2 Entry composition [i](#)

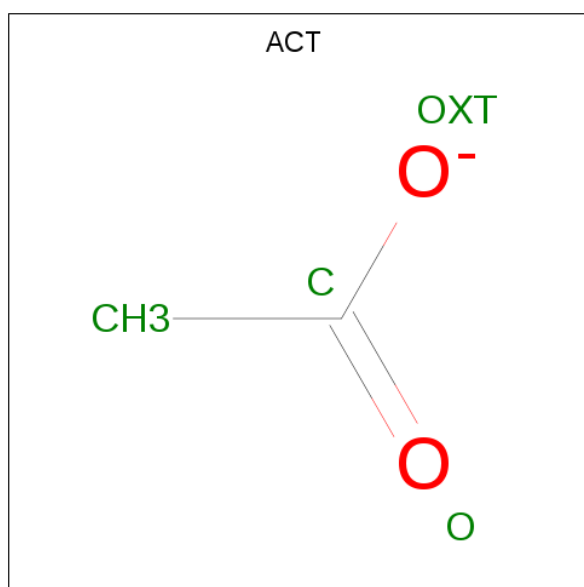
There are 4 unique types of molecules in this entry. The entry contains 10313 atoms, of which 0 are hydrogens and 0 are deuteriums.

In the tables below, the ZeroOcc column contains the number of atoms modelled with zero occupancy, the AltConf column contains the number of residues with at least one atom in alternate conformation and the Trace column contains the number of residues modelled with at most 2 atoms.

- Molecule 1 is a protein called GLUTATHIONE S-TRANSFERASE F2.

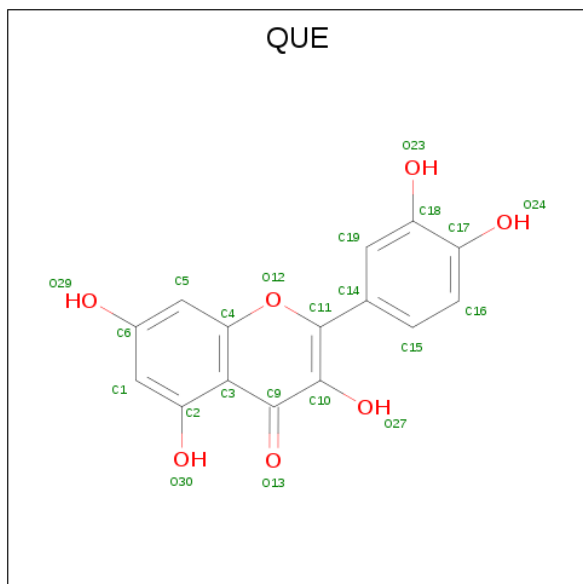
Mol	Chain	Residues	Atoms					ZeroOcc	AltConf	Trace
1	A	211	Total	C	N	O	S	0	1	0
			1677	1081	281	313	2			
1	B	210	Total	C	N	O	S	0	1	0
			1670	1073	282	313	2			
1	C	211	Total	C	N	O	S	0	0	0
			1644	1058	279	305	2			
1	D	211	Total	C	N	O	S	0	1	0
			1653	1063	277	311	2			
1	E	211	Total	C	N	O	S	0	0	0
			1653	1063	274	314	2			
1	F	204	Total	C	N	O	S	0	1	0
			1600	1032	269	297	2			

- Molecule 2 is ACETATE ION (three-letter code: ACT) (formula: C₂H₃O₂).



Mol	Chain	Residues	Atoms			ZeroOcc	AltConf
2	A	1	Total	C	O	0	0
			4	2	2		
2	B	1	Total	C	O	0	0
			4	2	2		
2	C	1	Total	C	O	0	0
			4	2	2		
2	D	1	Total	C	O	0	0
			4	2	2		
2	E	1	Total	C	O	0	0
			4	2	2		
2	F	1	Total	C	O	0	0
			4	2	2		

- Molecule 3 is 3,5,7,3',4'-PENTAHYDROXYFLAVONE (three-letter code: QUE) (formula: $C_{15}H_{10}O_7$).



Mol	Chain	Residues	Atoms			ZeroOcc	AltConf
3	B	1	Total	C	O	0	0
			22	15	7		
3	D	1	Total	C	O	0	0
			22	15	7		
3	F	1	Total	C	O	0	0
			22	15	7		

- Molecule 4 is water.

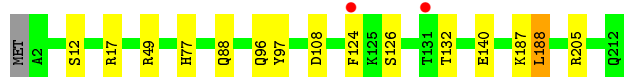
Mol	Chain	Residues	Atoms		ZeroOcc	AltConf
4	A	72	Total 72	O 72	0	0
4	B	52	Total 52	O 52	0	0
4	C	47	Total 47	O 47	0	0
4	D	54	Total 54	O 54	0	0
4	E	44	Total 44	O 44	0	0
4	F	57	Total 57	O 57	0	0

3 Residue-property plots [i](#)

These plots are drawn for all protein, RNA, DNA and oligosaccharide chains in the entry. The first graphic for a chain summarises the proportions of the various outlier classes displayed in the second graphic. The second graphic shows the sequence view annotated by issues in geometry and electron density. Residues are color-coded according to the number of geometric quality criteria for which they contain at least one outlier: green = 0, yellow = 1, orange = 2 and red = 3 or more. A red dot above a residue indicates a poor fit to the electron density ($RSRZ > 2$). Stretches of 2 or more consecutive residues without any outlier are shown as a green connector. Residues present in the sample, but not in the model, are shown in grey.

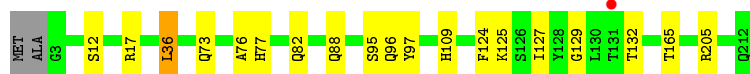
- Molecule 1: GLUTATHIONE S-TRANSFERASE F2

Chain A: 



- Molecule 1: GLUTATHIONE S-TRANSFERASE F2

Chain B: 



- Molecule 1: GLUTATHIONE S-TRANSFERASE F2

Chain C: 




- Molecule 1: GLUTATHIONE S-TRANSFERASE F2

Chain D: 

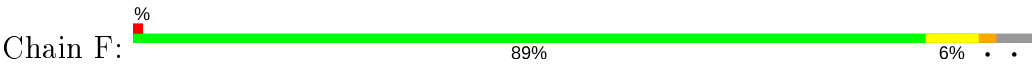


- Molecule 1: GLUTATHIONE S-TRANSFERASE F2

Chain E: 



- Molecule 1: GLUTATHIONE S-TRANSFERASE F2



4 Data and refinement statistics

Property	Value	Source
Space group	P 21 21 21	Depositor
Cell constants a, b, c, α , β , γ	88.03 Å 94.83 Å 153.20 Å 90.00° 90.00° 90.00°	Depositor
Resolution (Å)	59.59 – 2.38 59.59 – 2.38	Depositor EDS
% Data completeness (in resolution range)	99.9 (59.59-2.38) 99.9 (59.59-2.38)	Depositor EDS
R_{merge}	0.11	Depositor
R_{sym}	(Not available)	Depositor
$\langle I/\sigma(I) \rangle$ ¹	2.53 (at 2.37 Å)	Xtriage
Refinement program	REFMAC 5.8.0103	Depositor
R, R_{free}	0.203 , 0.245 0.209 , 0.249	Depositor DCC
R_{free} test set	2506 reflections (4.81%)	wwPDB-VP
Wilson B-factor (Å ²)	31.3	Xtriage
Anisotropy	0.809	Xtriage
Bulk solvent k_{sol} (e/Å ³), B_{sol} (Å ²)	0.34 , 36.6	EDS
L-test for twinning ²	$\langle L \rangle = 0.48$, $\langle L^2 \rangle = 0.31$	Xtriage
Estimated twinning fraction	No twinning to report.	Xtriage
F_o, F_c correlation	0.94	EDS
Total number of atoms	10313	wwPDB-VP
Average B, all atoms (Å ²)	36.0	wwPDB-VP

Xtriage's analysis on translational NCS is as follows: *The largest off-origin peak in the Patterson function is 6.20% of the height of the origin peak. No significant pseudotranslation is detected.*

¹Intensities estimated from amplitudes.

²Theoretical values of $\langle |L| \rangle$, $\langle L^2 \rangle$ for acentric reflections are 0.5, 0.333 respectively for untwinned datasets, and 0.375, 0.2 for perfectly twinned datasets.

5 Model quality

5.1 Standard geometry

Bond lengths and bond angles in the following residue types are not validated in this section: QUE, ACT

The Z score for a bond length (or angle) is the number of standard deviations the observed value is removed from the expected value. A bond length (or angle) with $|Z| > 5$ is considered an outlier worth inspection. RMSZ is the root-mean-square of all Z scores of the bond lengths (or angles).

Mol	Chain	Bond lengths		Bond angles	
		RMSZ	# $ Z > 5$	RMSZ	# $ Z > 5$
1	A	0.71	2/1718 (0.1%)	0.84	5/2329 (0.2%)
1	B	0.65	0/1711	0.83	5/2321 (0.2%)
1	C	0.63	0/1680	0.76	3/2282 (0.1%)
1	D	0.66	0/1694	0.86	7/2304 (0.3%)
1	E	0.67	0/1690	0.93	9/2297 (0.4%)
1	F	0.71	0/1640	0.92	8/2229 (0.4%)
All	All	0.67	2/10133 (0.0%)	0.86	37/13762 (0.3%)

Chiral center outliers are detected by calculating the chiral volume of a chiral center and verifying if the center is modelled as a planar moiety or with the opposite hand. A planarity outlier is detected by checking planarity of atoms in a peptide group, atoms in a mainchain group or atoms of a sidechain that are expected to be planar.

Mol	Chain	#Chirality outliers	#Planarity outliers
1	B	0	1
1	E	0	1
All	All	0	2

All (2) bond length outliers are listed below:

Mol	Chain	Res	Type	Atoms	Z	Observed(Å)	Ideal(Å)
1	A	126	SER	CA-CB	6.10	1.62	1.52
1	A	140	GLU	CG-CD	5.04	1.59	1.51

All (37) bond angle outliers are listed below:

Mol	Chain	Res	Type	Atoms	Z	Observed(°)	Ideal(°)
1	E	28	ASP	CB-CG-OD2	13.19	130.17	118.30
1	E	28	ASP	CB-CG-OD1	-11.84	107.65	118.30
1	F	17	ARG	NE-CZ-NH1	9.87	125.23	120.30

Continued on next page...

Continued from previous page...

Mol	Chain	Res	Type	Atoms	Z	Observed(°)	Ideal(°)
1	D	17	ARG	NE-CZ-NH1	8.93	124.77	120.30
1	D	205	ARG	NE-CZ-NH1	8.85	124.72	120.30
1	D	17	ARG	NE-CZ-NH2	-8.52	116.04	120.30
1	B	17	ARG	NE-CZ-NH1	8.33	124.46	120.30
1	A	205	ARG	NE-CZ-NH1	8.17	124.39	120.30
1	F	120	PHE	CB-CA-C	8.15	126.69	110.40
1	F	17	ARG	NE-CZ-NH2	-8.00	116.30	120.30
1	E	205	ARG	NE-CZ-NH1	7.74	124.17	120.30
1	F	78	ARG	NE-CZ-NH1	7.60	124.10	120.30
1	A	140	GLU	OE1-CD-OE2	-7.43	114.38	123.30
1	F	205	ARG	NE-CZ-NH1	7.43	124.01	120.30
1	B	205	ARG	NE-CZ-NH2	-7.37	116.61	120.30
1	D	205	ARG	NE-CZ-NH2	-7.35	116.62	120.30
1	E	140	GLU	OE1-CD-OE2	-7.33	114.50	123.30
1	F	205	ARG	NE-CZ-NH2	-7.30	116.65	120.30
1	B	17	ARG	NE-CZ-NH2	-7.27	116.66	120.30
1	E	205	ARG	NE-CZ-NH2	-7.23	116.69	120.30
1	B	205	ARG	NE-CZ-NH1	7.07	123.83	120.30
1	D	165	THR	N-CA-CB	-6.90	97.20	110.30
1	A	205	ARG	NE-CZ-NH2	-6.83	116.89	120.30
1	C	205	ARG	NE-CZ-NH1	6.82	123.71	120.30
1	E	124	PHE	CB-CA-C	6.18	122.76	110.40
1	D	212	GLN	CA-C-O	-6.14	107.20	120.10
1	F	78	ARG	NE-CZ-NH2	-6.06	117.27	120.30
1	E	5	LYS	CD-CE-NZ	-5.76	98.46	111.70
1	A	49	ARG	NE-CZ-NH1	5.68	123.14	120.30
1	C	205	ARG	NE-CZ-NH2	-5.68	117.46	120.30
1	F	36	LEU	CA-CB-CG	5.63	128.26	115.30
1	B	36	LEU	CA-CB-CG	5.63	128.24	115.30
1	D	36	LEU	CA-CB-CG	5.26	127.39	115.30
1	E	188	LEU	CA-CB-CG	5.26	127.39	115.30
1	A	188	LEU	CA-CB-CG	5.25	127.38	115.30
1	E	82	GLN	CB-CA-C	-5.16	100.09	110.40
1	C	188	LEU	CA-CB-CG	5.11	127.06	115.30

There are no chirality outliers.

All (2) planarity outliers are listed below:

Mol	Chain	Res	Type	Group
1	B	129	GLY	Peptide
1	E	129	GLY	Peptide

5.2 Too-close contacts ⓘ

In the following table, the Non-H and H(model) columns list the number of non-hydrogen atoms and hydrogen atoms in the chain respectively. The H(added) column lists the number of hydrogen atoms added and optimized by MolProbity. The Clashes column lists the number of clashes within the asymmetric unit, whereas Symm-Clashes lists symmetry related clashes.

Mol	Chain	Non-H	H(model)	H(added)	Clashes	Symm-Clashes
1	A	1677	0	1641	7	0
1	B	1670	0	1627	18	0
1	C	1644	0	1585	11	0
1	D	1653	0	1583	10	0
1	E	1653	0	1584	11	0
1	F	1600	0	1521	7	0
2	A	4	0	3	0	0
2	B	4	0	3	0	0
2	C	4	0	3	0	0
2	D	4	0	3	0	0
2	E	4	0	3	0	0
2	F	4	0	3	0	0
3	B	22	0	7	3	0
3	D	22	0	8	0	0
3	F	22	0	8	0	0
4	A	72	0	0	1	0
4	B	52	0	0	3	0
4	C	47	0	0	0	0
4	D	54	0	0	4	0
4	E	44	0	0	3	0
4	F	57	0	0	0	0
All	All	10313	0	9582	53	0

The all-atom clashscore is defined as the number of clashes found per 1000 atoms (including hydrogen atoms). The all-atom clashscore for this structure is 3.

All (53) close contacts within the same asymmetric unit are listed below, sorted by their clash magnitude.

Atom-1	Atom-2	Interatomic distance (Å)	Clash overlap (Å)
1:A:124[A]:PHE:CD2	1:E:128:TYR:CE1	2.82	0.67
1:A:124[A]:PHE:CD2	1:E:128:TYR:HE1	2.14	0.66
1:B:124:PHE:HB3	1:C:128:TYR:OH	1.97	0.65
1:B:73:GLN:HG2	3:B:1213:QUE:C5	2.31	0.60
1:B:124:PHE:O	1:B:127:ILE:HG23	2.02	0.59
1:E:8:GLY:HA2	1:E:55:VAL:HG22	1.84	0.59

Continued on next page...

Continued from previous page...

Atom-1	Atom-2	Interatomic distance (Å)	Clash overlap (Å)
1:B:124:PHE:HB3	1:C:128:TYR:CZ	2.39	0.58
1:B:88:GLN:HG2	1:B:96:GLN:HB3	1.88	0.56
1:D:126:SER:HB2	1:F:37:LYS:HB3	1.88	0.56
1:D:88:GLN:HG2	1:D:96:GLN:HB3	1.88	0.56
1:A:88:GLN:HG2	1:A:96:GLN:HB3	1.89	0.55
1:D:165:THR:HG23	4:D:2026:HOH:O	2.06	0.55
1:F:88:GLN:HG2	1:F:96:GLN:HB3	1.88	0.55
1:C:8:GLY:HA2	1:C:55:VAL:HG22	1.88	0.54
1:B:124:PHE:O	1:B:127:ILE:CG2	2.55	0.54
1:C:88:GLN:HG2	1:C:96:GLN:HB3	1.88	0.54
1:D:81:ASN:C	1:D:81:ASN:HD22	2.10	0.54
1:C:9:HIS:CD2	1:C:11:ALA:H	2.26	0.53
1:E:88:GLN:HG2	1:E:96:GLN:HB3	1.90	0.53
1:E:77:HIS:HE1	1:E:97:TYR:OH	1.92	0.53
1:A:77:HIS:HE1	1:A:97:TYR:OH	1.92	0.53
1:F:77:HIS:HE1	1:F:97:TYR:OH	1.92	0.53
1:E:81:ASN:C	1:E:81:ASN:HD22	2.11	0.53
1:B:124:PHE:CD2	1:C:128:TYR:CE2	2.97	0.53
4:E:2030:HOH:O	1:F:78:ARG:NH2	2.42	0.52
1:E:123:ILE:O	1:E:127:ILE:HG13	2.09	0.51
1:B:77:HIS:HD2	4:B:2052:HOH:O	1.94	0.51
1:B:77:HIS:HE1	1:B:97:TYR:OH	1.94	0.51
1:C:77:HIS:HE1	1:C:97:TYR:OH	1.94	0.51
1:B:125:LYS:O	1:B:127:ILE:O	2.28	0.50
1:A:108:ASP:OD1	1:B:109:HIS:HE1	1.95	0.50
1:B:124:PHE:CG	1:C:128:TYR:CE2	2.99	0.50
1:D:77:HIS:HE1	1:D:97:TYR:OH	1.94	0.50
1:B:73:GLN:HG2	3:B:1213:QUE:C6	2.42	0.50
1:C:67:GLU:OE2	1:D:109:HIS:HD2	1.94	0.49
1:A:124[A]:PHE:CE2	1:E:128:TYR:HE1	2.30	0.49
1:F:122:GLN:O	1:F:123:ILE:C	2.50	0.47
1:D:88:GLN:NE2	4:D:2030:HOH:O	2.46	0.46
1:B:88:GLN:NE2	4:B:2027:HOH:O	2.48	0.46
1:B:165:THR:HG23	4:B:2025:HOH:O	2.16	0.45
1:D:165:THR:CG2	4:D:2026:HOH:O	2.63	0.44
1:E:67:GLU:OE2	1:F:109:HIS:HD2	1.99	0.44
1:B:73:GLN:NE2	3:B:1213:QUE:H5	2.34	0.43
1:D:81:ASN:C	1:D:81:ASN:ND2	2.71	0.43
1:E:17:ARG:NH2	4:E:2007:HOH:O	2.42	0.43
1:A:17:ARG:NH2	4:A:2008:HOH:O	2.51	0.43
1:D:77:HIS:HD2	4:D:2024:HOH:O	2.02	0.42

Continued on next page...

Continued from previous page...

Atom-1	Atom-2	Interatomic distance (Å)	Clash overlap (Å)
1:F:120:PHE:HB3	1:F:124:PHE:CE2	2.54	0.42
1:B:124:PHE:HA	1:B:127:ILE:HG22	2.02	0.41
1:C:9:HIS:HD2	1:C:11:ALA:H	1.66	0.41
1:B:73:GLN:O	1:B:76:ALA:HB3	2.21	0.41
1:E:77:HIS:HD2	4:E:2023:HOH:O	2.03	0.41
1:C:129:GLY:O	1:C:130:LEU:HD23	2.21	0.41

There are no symmetry-related clashes.

5.3 Torsion angles [i](#)

5.3.1 Protein backbone [i](#)

In the following table, the Percentiles column shows the percent Ramachandran outliers of the chain as a percentile score with respect to all X-ray entries followed by that with respect to entries of similar resolution.

The Analysed column shows the number of residues for which the backbone conformation was analysed, and the total number of residues.

Mol	Chain	Analysed	Favoured	Allowed	Outliers	Percentiles	
1	A	210/212 (99%)	208 (99%)	2 (1%)	0	100	100
1	B	209/212 (99%)	206 (99%)	3 (1%)	0	100	100
1	C	209/212 (99%)	205 (98%)	3 (1%)	1 (0%)	29	39
1	D	210/212 (99%)	209 (100%)	1 (0%)	0	100	100
1	E	209/212 (99%)	207 (99%)	1 (0%)	1 (0%)	29	39
1	F	201/212 (95%)	200 (100%)	1 (0%)	0	100	100
All	All	1248/1272 (98%)	1235 (99%)	11 (1%)	2 (0%)	47	61

All (2) Ramachandran outliers are listed below:

Mol	Chain	Res	Type
1	E	128	TYR
1	C	128	TYR

5.3.2 Protein sidechains ⓘ

In the following table, the Percentiles column shows the percent sidechain outliers of the chain as a percentile score with respect to all X-ray entries followed by that with respect to entries of similar resolution.

The Analysed column shows the number of residues for which the sidechain conformation was analysed, and the total number of residues.

Mol	Chain	Analysed	Rotameric	Outliers	Percentiles	
1	A	173/182 (95%)	169 (98%)	4 (2%)	50	68
1	B	173/182 (95%)	168 (97%)	5 (3%)	42	60
1	C	165/182 (91%)	161 (98%)	4 (2%)	49	66
1	D	167/182 (92%)	160 (96%)	7 (4%)	30	44
1	E	167/182 (92%)	159 (95%)	8 (5%)	25	39
1	F	159/182 (87%)	155 (98%)	4 (2%)	47	65
All	All	1004/1092 (92%)	972 (97%)	32 (3%)	39	56

All (32) residues with a non-rotameric sidechain are listed below:

Mol	Chain	Res	Type
1	A	12	SER
1	A	132	THR
1	A	187	LYS
1	A	188	LEU
1	B	12	SER
1	B	36	LEU
1	B	82	GLN
1	B	95	SER
1	B	132	THR
1	C	12	SER
1	C	116	SER
1	C	132	THR
1	C	188	LEU
1	D	12	SER
1	D	36	LEU
1	D	81	ASN
1	D	95	SER
1	D	132	THR
1	D	165	THR
1	D	197	GLU
1	E	12	SER
1	E	32	VAL

Continued on next page...

Continued from previous page...

Mol	Chain	Res	Type
1	E	55	VAL
1	E	81	ASN
1	E	82	GLN
1	E	116	SER
1	E	132	THR
1	E	188	LEU
1	F	12	SER
1	F	36	LEU
1	F	88	GLN
1	F	95	SER

Some sidechains can be flipped to improve hydrogen bonding and reduce clashes. All (26) such sidechains are listed below:

Mol	Chain	Res	Type
1	A	77	HIS
1	A	88	GLN
1	A	122	GLN
1	B	77	HIS
1	B	88	GLN
1	B	109	HIS
1	B	122	GLN
1	C	9	HIS
1	C	54	GLN
1	C	77	HIS
1	C	122	GLN
1	D	77	HIS
1	D	81	ASN
1	D	88	GLN
1	D	109	HIS
1	D	122	GLN
1	E	26	ASN
1	E	73	GLN
1	E	77	HIS
1	E	81	ASN
1	E	88	GLN
1	E	122	GLN
1	F	77	HIS
1	F	88	GLN
1	F	109	HIS
1	F	122	GLN

5.3.3 RNA ⓘ

There are no RNA molecules in this entry.

5.4 Non-standard residues in protein, DNA, RNA chains ⓘ

There are no non-standard protein/DNA/RNA residues in this entry.

5.5 Carbohydrates ⓘ

There are no monosaccharides in this entry.

5.6 Ligand geometry ⓘ

9 ligands are modelled in this entry.

In the following table, the Counts columns list the number of bonds (or angles) for which Mogul statistics could be retrieved, the number of bonds (or angles) that are observed in the model and the number of bonds (or angles) that are defined in the Chemical Component Dictionary. The Link column lists molecule types, if any, to which the group is linked. The Z score for a bond length (or angle) is the number of standard deviations the observed value is removed from the expected value. A bond length (or angle) with $|Z| > 2$ is considered an outlier worth inspection. RMSZ is the root-mean-square of all Z scores of the bond lengths (or angles).

Mol	Type	Chain	Res	Link	Bond lengths			Bond angles		
					Counts	RMSZ	# $ Z > 2$	Counts	RMSZ	# $ Z > 2$
2	ACT	E	1213	-	1,3,3	3.81	1 (100%)	0,3,3	0.00	-
2	ACT	C	1213	-	1,3,3	3.26	1 (100%)	0,3,3	0.00	-
2	ACT	A	1213	-	1,3,3	3.55	1 (100%)	0,3,3	0.00	-
3	QUE	F	1213	-	21,24,24	1.74	6 (28%)	28,36,36	1.79	8 (28%)
3	QUE	D	1213	-	21,24,24	1.48	5 (23%)	28,36,36	1.66	6 (21%)
3	QUE	B	1213	-	21,24,24	1.21	2 (9%)	28,36,36	1.92	9 (32%)
2	ACT	B	1214	-	1,3,3	2.66	1 (100%)	0,3,3	0.00	-
2	ACT	D	1214	-	1,3,3	4.79	1 (100%)	0,3,3	0.00	-
2	ACT	F	1214	-	1,3,3	3.82	1 (100%)	0,3,3	0.00	-

In the following table, the Chirals column lists the number of chiral outliers, the number of chiral centers analysed, the number of these observed in the model and the number defined in the Chemical Component Dictionary. Similar counts are reported in the Torsion and Rings columns. '-' means no outliers of that kind were identified.

Mol	Type	Chain	Res	Link	Chirals	Torsions	Rings
3	QUE	D	1213	-	-	2/4/4/4	0/3/3/3
3	QUE	F	1213	-	-	2/4/4/4	0/3/3/3
3	QUE	B	1213	-	-	2/4/4/4	0/3/3/3

All (19) bond length outliers are listed below:

Mol	Chain	Res	Type	Atoms	Z	Observed(Å)	Ideal(Å)
2	D	1214	ACT	CH3-C	4.79	1.54	1.48
2	F	1214	ACT	CH3-C	3.82	1.53	1.48
2	E	1213	ACT	CH3-C	3.81	1.53	1.48
2	A	1213	ACT	CH3-C	3.55	1.53	1.48
3	B	1213	QUE	C5-C6	3.29	1.43	1.37
2	C	1213	ACT	CH3-C	3.26	1.52	1.48
3	D	1213	QUE	C14-C11	-2.92	1.41	1.46
3	F	1213	QUE	C2-C3	2.84	1.48	1.43
3	F	1213	QUE	C16-C15	2.74	1.43	1.38
3	B	1213	QUE	C14-C11	-2.69	1.42	1.46
2	B	1214	ACT	CH3-C	2.66	1.52	1.48
3	F	1213	QUE	C15-C14	2.62	1.44	1.39
3	D	1213	QUE	C1-C2	2.48	1.43	1.37
3	F	1213	QUE	C5-C4	2.40	1.42	1.37
3	F	1213	QUE	C1-C2	2.27	1.42	1.37
3	D	1213	QUE	C16-C15	2.22	1.42	1.38
3	F	1213	QUE	C19-C18	2.16	1.42	1.38
3	D	1213	QUE	C15-C14	2.15	1.43	1.39
3	D	1213	QUE	C1-C6	2.09	1.42	1.39

All (23) bond angle outliers are listed below:

Mol	Chain	Res	Type	Atoms	Z	Observed(°)	Ideal(°)
3	F	1213	QUE	C9-C3-C2	4.74	129.97	121.85
3	B	1213	QUE	C5-C4-C3	-4.35	118.23	123.05
3	D	1213	QUE	C15-C14-C11	4.06	125.95	120.29
3	D	1213	QUE	C9-C3-C2	3.88	128.50	121.85
3	D	1213	QUE	C19-C14-C11	-3.52	115.38	120.29
3	B	1213	QUE	C2-C1-C6	-3.44	116.59	119.70
3	B	1213	QUE	O12-C4-C5	3.33	120.00	116.11
3	F	1213	QUE	C15-C14-C11	3.28	124.86	120.29
3	B	1213	QUE	C1-C2-C3	3.17	124.29	120.61
3	B	1213	QUE	C15-C14-C11	2.89	124.33	120.29
3	B	1213	QUE	O29-C6-C1	-2.84	112.45	119.84
3	F	1213	QUE	C9-C10-C11	2.78	124.21	119.45

Continued on next page...

Continued from previous page...

Mol	Chain	Res	Type	Atoms	Z	Observed(°)	Ideal(°)
3	D	1213	QUE	C5-C6-C1	-2.77	118.71	120.94
3	B	1213	QUE	C9-C10-C11	2.68	124.03	119.45
3	B	1213	QUE	C10-C9-C3	-2.65	117.68	121.38
3	F	1213	QUE	C19-C14-C11	-2.50	116.81	120.29
3	F	1213	QUE	O30-C2-C1	-2.49	113.87	121.17
3	B	1213	QUE	O30-C2-C1	-2.47	113.93	121.17
3	D	1213	QUE	C9-C10-C11	2.46	123.66	119.45
3	F	1213	QUE	C15-C16-C17	-2.28	118.16	120.50
3	F	1213	QUE	C2-C1-C6	-2.16	117.75	119.70
3	D	1213	QUE	O29-C6-C1	2.07	125.21	119.84
3	F	1213	QUE	O24-C17-C16	2.04	124.89	119.33

There are no chirality outliers.

All (6) torsion outliers are listed below:

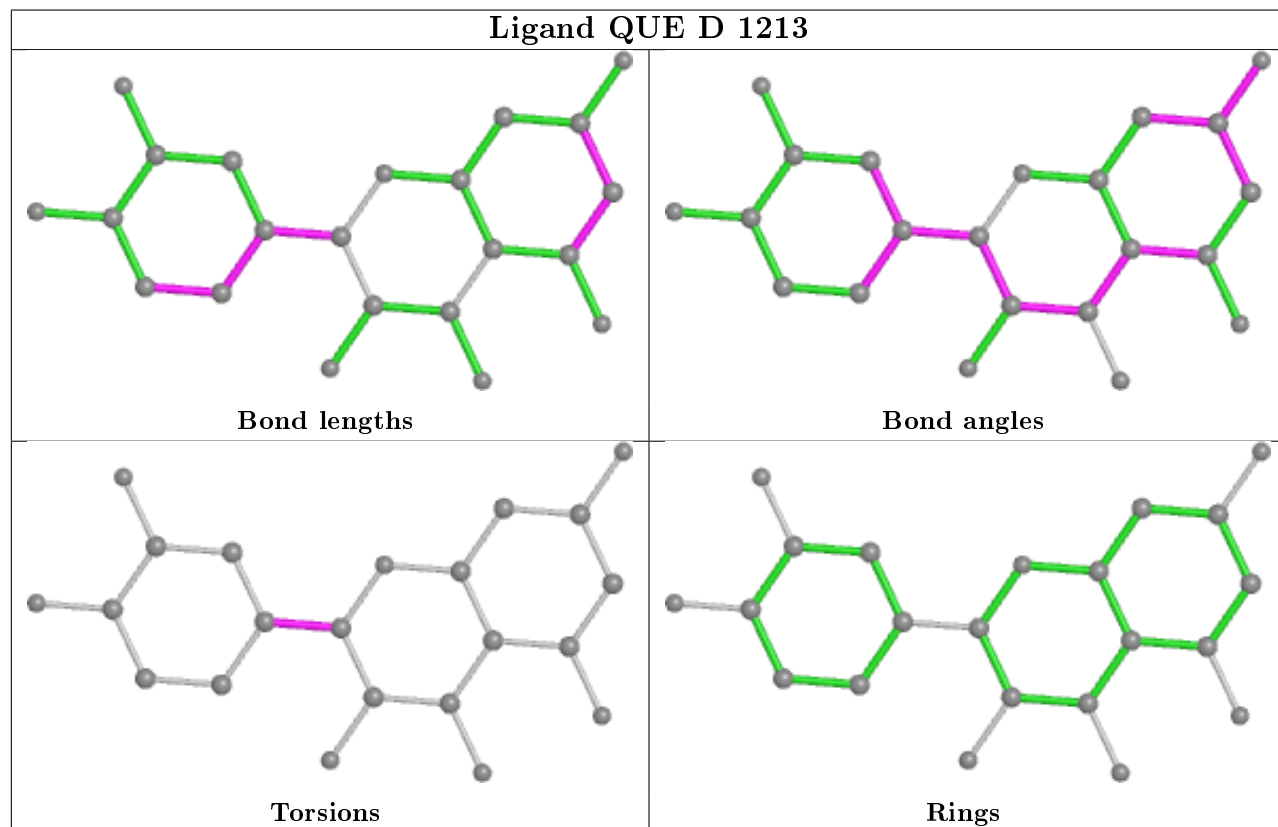
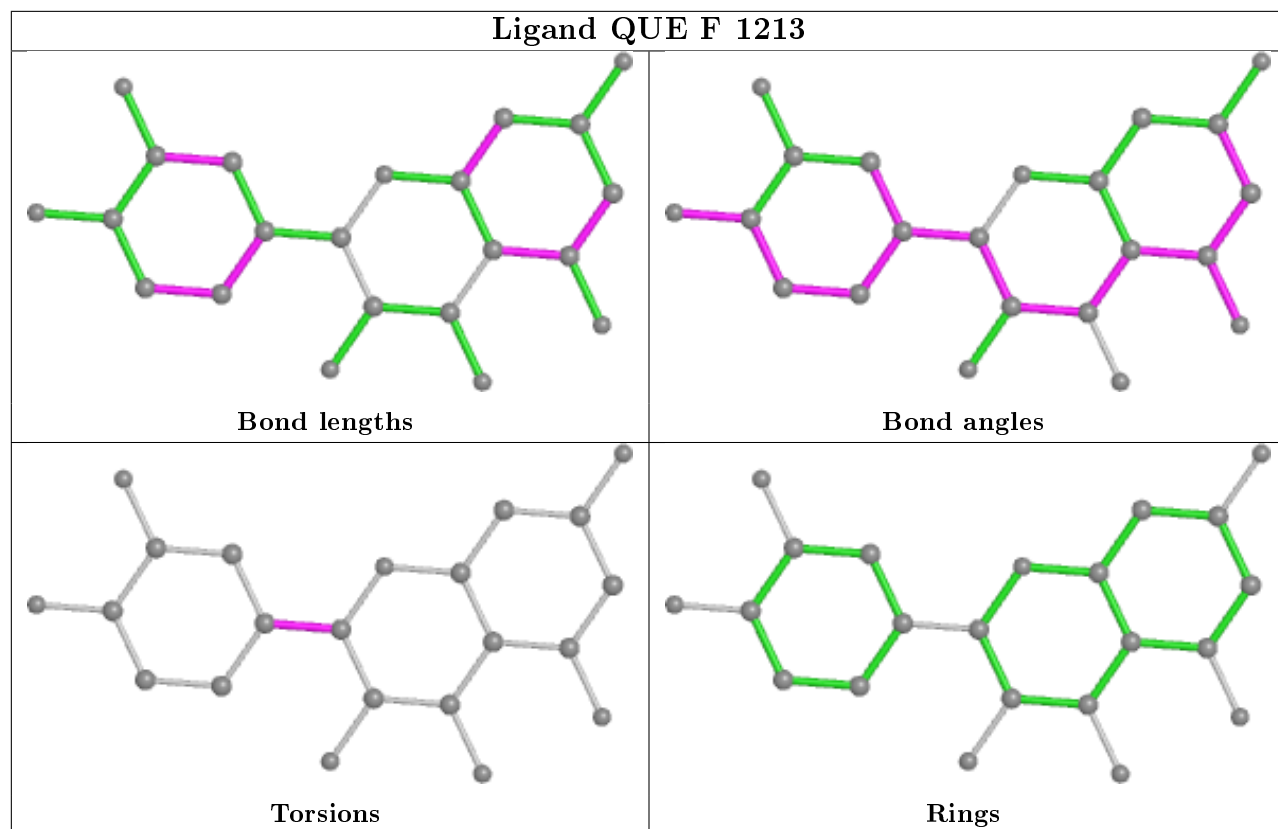
Mol	Chain	Res	Type	Atoms
3	F	1213	QUE	C10-C11-C14-C15
3	F	1213	QUE	C10-C11-C14-C19
3	D	1213	QUE	C10-C11-C14-C15
3	D	1213	QUE	C10-C11-C14-C19
3	B	1213	QUE	C10-C11-C14-C15
3	B	1213	QUE	C10-C11-C14-C19

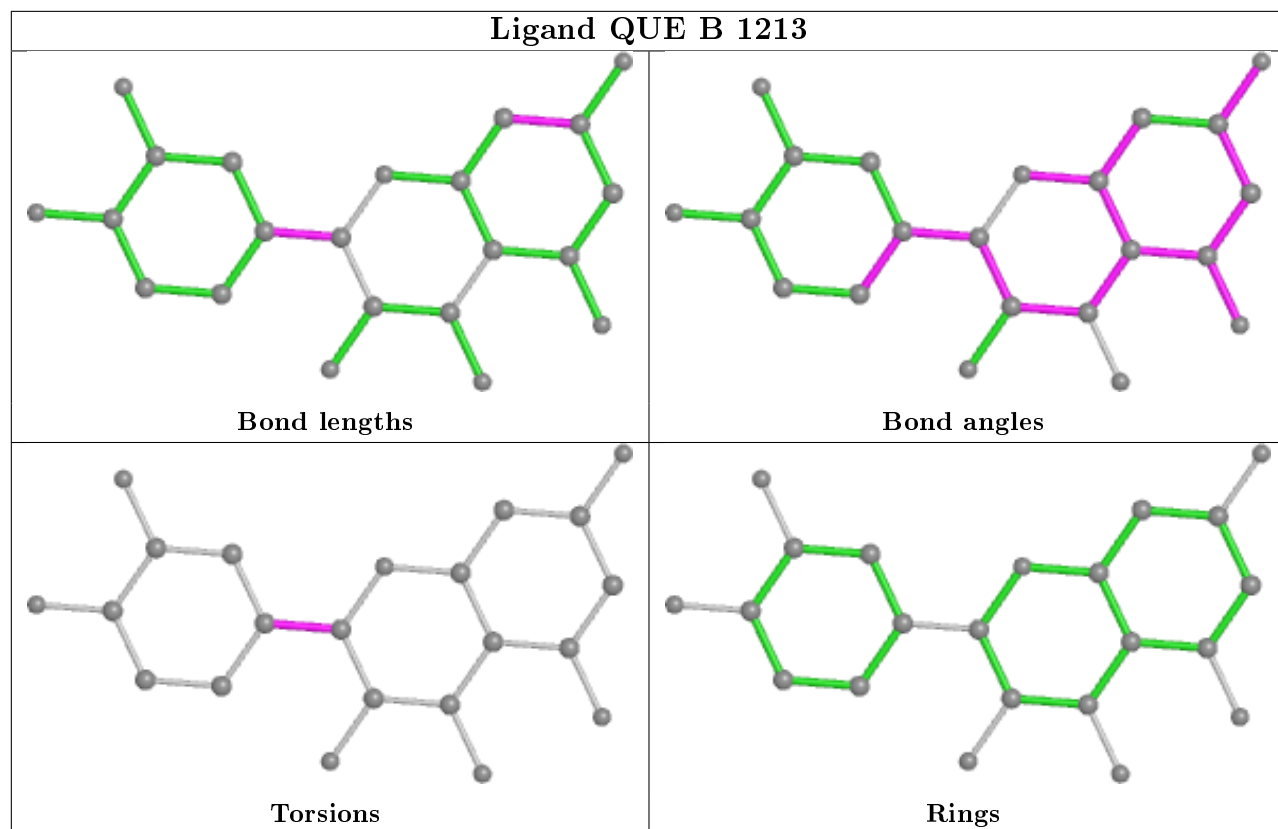
There are no ring outliers.

1 monomer is involved in 3 short contacts:

Mol	Chain	Res	Type	Clashes	Symm-Clashes
3	B	1213	QUE	3	0

The following is a two-dimensional graphical depiction of Mogul quality analysis of bond lengths, bond angles, torsion angles, and ring geometry for all instances of the Ligand of Interest. In addition, ligands with molecular weight > 250 and outliers as shown on the validation Tables will also be included. For torsion angles, if less than 5% of the Mogul distribution of torsion angles is within 10 degrees of the torsion angle in question, then that torsion angle is considered an outlier. Any bond that is central to one or more torsion angles identified as an outlier by Mogul will be highlighted in the graph. For rings, the root-mean-square deviation (RMSD) between the ring in question and similar rings identified by Mogul is calculated over all ring torsion angles. If the average RMSD is greater than 60 degrees and the minimal RMSD between the ring in question and any Mogul-identified rings is also greater than 60 degrees, then that ring is considered an outlier. The outliers are highlighted in purple. The color gray indicates Mogul did not find sufficient equivalents in the CSD to analyse the geometry.





5.7 Other polymers [i](#)

There are no such residues in this entry.

5.8 Polymer linkage issues [i](#)

There are no chain breaks in this entry.

6 Fit of model and data ⓘ

6.1 Protein, DNA and RNA chains ⓘ

In the following table, the column labelled ‘#RSRZ> 2’ contains the number (and percentage) of RSRZ outliers, followed by percent RSRZ outliers for the chain as percentile scores relative to all X-ray entries and entries of similar resolution. The OWAB column contains the minimum, median, 95th percentile and maximum values of the occupancy-weighted average B-factor per residue. The column labelled ‘Q< 0.9’ lists the number of (and percentage) of residues with an average occupancy less than 0.9.

Mol	Chain	Analysed	<RSRZ>	#RSRZ>2	OWAB(Å ²)	Q<0.9
1	A	211/212 (99%)	-0.10	2 (0%) 84 84	21, 32, 48, 51	0
1	B	210/212 (99%)	-0.03	1 (0%) 91 91	21, 35, 59, 77	0
1	C	211/212 (99%)	0.08	4 (1%) 66 68	21, 38, 62, 74	0
1	D	211/212 (99%)	0.02	0 100 100	20, 35, 52, 66	0
1	E	211/212 (99%)	0.03	1 (0%) 91 91	23, 36, 54, 65	0
1	F	204/212 (96%)	-0.08	2 (0%) 82 83	20, 31, 51, 77	0
All	All	1258/1272 (98%)	-0.01	10 (0%) 86 86	20, 34, 55, 77	0

All (10) RSRZ outliers are listed below:

Mol	Chain	Res	Type	RSRZ
1	C	129	GLY	4.6
1	E	128	TYR	3.3
1	A	124[A]	PHE	3.1
1	C	127	ILE	3.0
1	B	131	THR	3.0
1	C	128	TYR	2.8
1	F	45	PRO	2.7
1	F	124	PHE	2.2
1	A	131	THR	2.1
1	C	120	PHE	2.1

6.2 Non-standard residues in protein, DNA, RNA chains ⓘ

There are no non-standard protein/DNA/RNA residues in this entry.

6.3 Carbohydrates [i](#)

There are no monosaccharides in this entry.

6.4 Ligands [i](#)

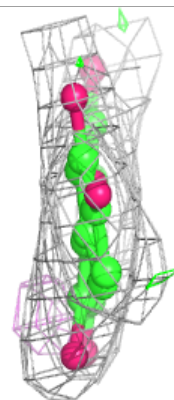
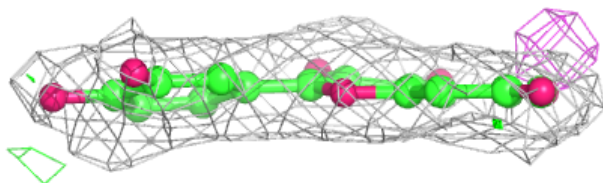
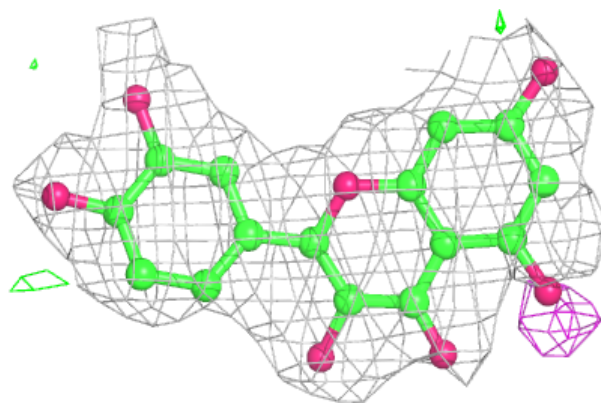
In the following table, the Atoms column lists the number of modelled atoms in the group and the number defined in the chemical component dictionary. The B-factors column lists the minimum, median, 95th percentile and maximum values of B factors of atoms in the group. The column labelled 'Q< 0.9' lists the number of atoms with occupancy less than 0.9.

Mol	Type	Chain	Res	Atoms	RSCC	RSR	B-factors(\AA^2)	Q<0.9
2	ACT	E	1213	4/4	0.82	0.18	26,28,29,31	0
3	QUE	B	1213	22/22	0.86	0.19	46,56,65,73	0
2	ACT	F	1214	4/4	0.86	0.15	34,36,40,42	0
3	QUE	F	1213	22/22	0.88	0.17	29,34,37,42	0
2	ACT	C	1213	4/4	0.89	0.15	33,36,38,39	0
3	QUE	D	1213	22/22	0.89	0.19	36,43,48,51	0
2	ACT	D	1214	4/4	0.91	0.15	36,36,37,39	0
2	ACT	B	1214	4/4	0.92	0.14	31,31,32,33	0
2	ACT	A	1213	4/4	0.94	0.14	31,33,34,35	0

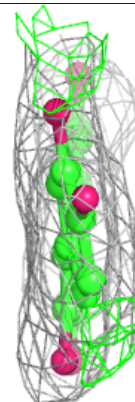
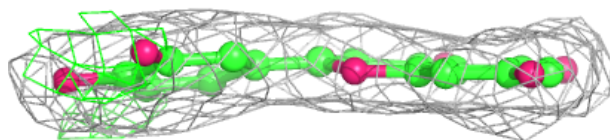
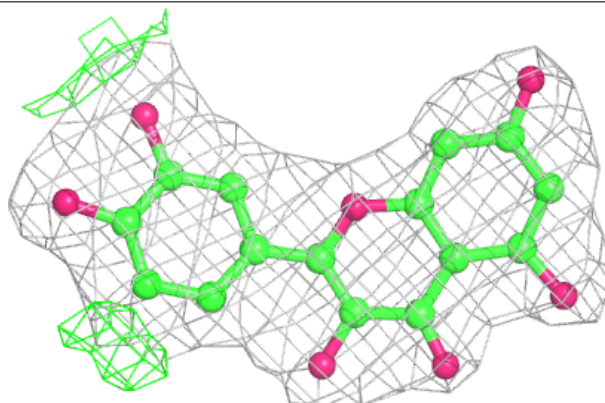
The following is a graphical depiction of the model fit to experimental electron density of all instances of the Ligand of Interest. In addition, ligands with molecular weight > 250 and outliers as shown on the geometry validation Tables will also be included. Each fit is shown from different orientation to approximate a three-dimensional view.

Electron density around QUE B 1213:

$2mF_o-DF_c$ (at 0.7 rmsd) in gray
 mF_o-DF_c (at 3 rmsd) in purple (negative)
and green (positive)

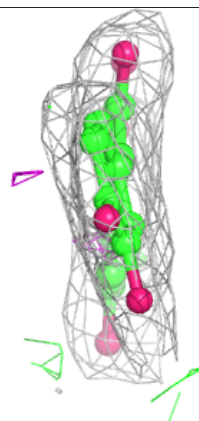
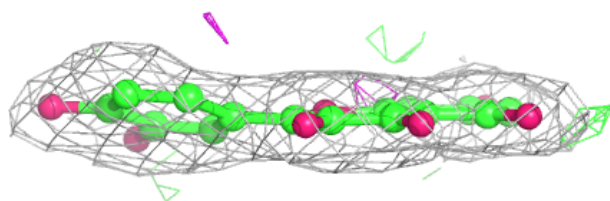
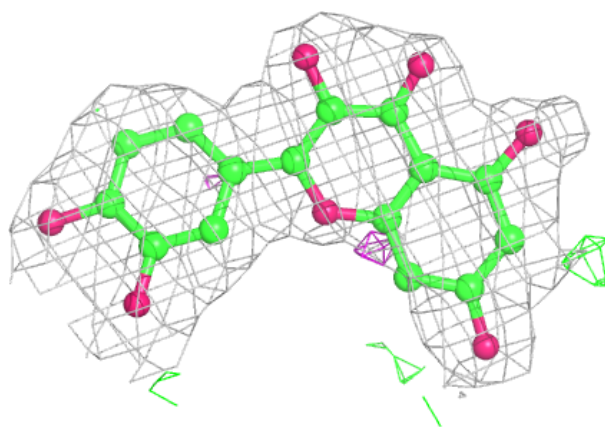
**Electron density around QUE F 1213:**

$2mF_o-DF_c$ (at 0.7 rmsd) in gray
 mF_o-DF_c (at 3 rmsd) in purple (negative)
and green (positive)



Electron density around QUE D 1213:

$2mF_o - DF_c$ (at 0.7 rmsd) in gray
 $mF_o - DF_c$ (at 3 rmsd) in purple (negative)
and green (positive)



6.5 Other polymers [i](#)

There are no such residues in this entry.