



# Full wwPDB X-ray Structure Validation Report ⓘ

May 15, 2020 – 04:33 pm BST

PDB ID : 4A5L  
Title : Crystal structure of the thioredoxin reductase from *Entamoeba histolytica*  
Authors : Podust, L.M.  
Deposited on : 2011-10-25  
Resolution : 1.66 Å(reported)

This is a Full wwPDB X-ray Structure Validation Report for a publicly released PDB entry.

We welcome your comments at [validation@mail.wwpdb.org](mailto:validation@mail.wwpdb.org)

A user guide is available at

<https://www.wwpdb.org/validation/2017/XrayValidationReportHelp>

with specific help available everywhere you see the ⓘ symbol.

---

The following versions of software and data (see [references ⓘ](#)) were used in the production of this report:

MolProbity : 4.02b-467  
Mogul : 1.8.5 (274361), CSD as541be (2020)  
Xtriage (Phenix) : 1.13  
EDS : 2.11  
buster-report : 1.1.7 (2018)  
Percentile statistics : 20191225.v01 (using entries in the PDB archive December 25th 2019)  
Refmac : 5.8.0158  
CCP4 : 7.0.044 (Gargrove)  
Ideal geometry (proteins) : Engh & Huber (2001)  
Ideal geometry (DNA, RNA) : Parkinson et al. (1996)  
Validation Pipeline (wwPDB-VP) : 2.11

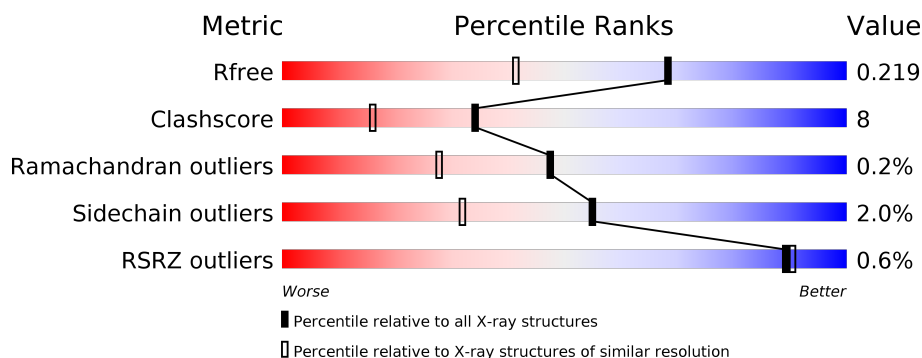
# 1 Overall quality at a glance ⓘ

The following experimental techniques were used to determine the structure:

*X-RAY DIFFRACTION*

The reported resolution of this entry is 1.66 Å.

Percentile scores (ranging between 0-100) for global validation metrics of the entry are shown in the following graphic. The table shows the number of entries on which the scores are based.



Metric	Whole archive (#Entries)	Similar resolution (#Entries, resolution range(Å))
$R_{free}$	130704	1827 (1.66-1.66)
Clashscore	141614	1931 (1.66-1.66)
Ramachandran outliers	138981	1891 (1.66-1.66)
Sidechain outliers	138945	1891 (1.66-1.66)
RSRZ outliers	127900	1791 (1.66-1.66)

The table below summarises the geometric issues observed across the polymeric chains and their fit to the electron density. The red, orange, yellow and green segments on the lower bar indicate the fraction of residues that contain outliers for  $\geq 3$ , 2, 1 and 0 types of geometric quality criteria respectively. A grey segment represents the fraction of residues that are not modelled. The numeric value for each fraction is indicated below the corresponding segment, with a dot representing fractions  $\leq 5\%$ . The upper red bar (where present) indicates the fraction of residues that have poor fit to the electron density. The numeric value is given above the bar.

Mol	Chain	Length	Quality of chain
1	A	314	<div> <div>%</div> <div> <div></div> <div>82%</div> <div>17%</div> <div>.</div> </div> </div>
1	B	314	<div> <div></div> <div>87%</div> <div>11%</div> <div>..</div> </div>

## 2 Entry composition [i](#)

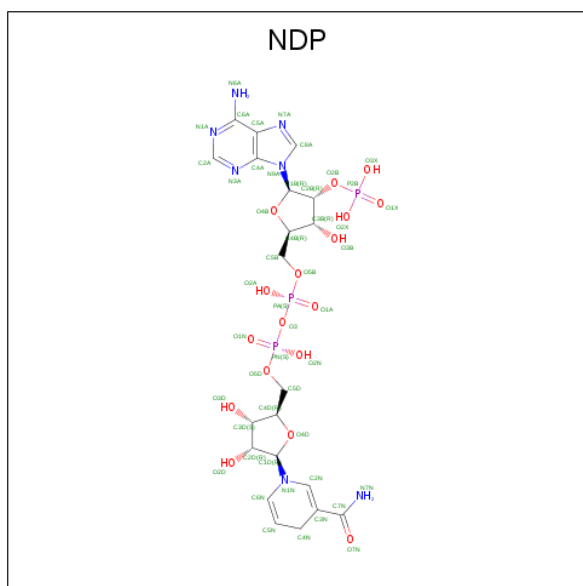
There are 5 unique types of molecules in this entry. The entry contains 5570 atoms, of which 0 are hydrogens and 0 are deuteriums.

In the tables below, the ZeroOcc column contains the number of atoms modelled with zero occupancy, the AltConf column contains the number of residues with at least one atom in alternate conformation and the Trace column contains the number of residues modelled with at most 2 atoms.

- Molecule 1 is a protein called THIOREDOXIN REDUCTASE.

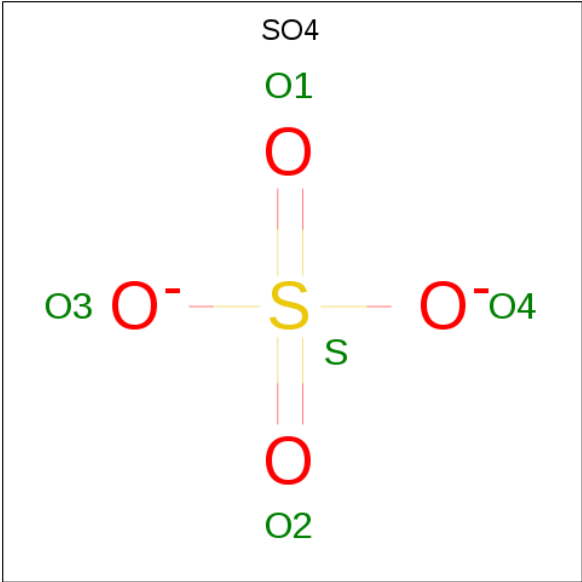
Mol	Chain	Residues	Atoms					ZeroOcc	AltConf	Trace
1	A	313	Total	C	N	O	S	0	5	0
			2380	1505	410	447	18			
1	B	312	Total	C	N	O	S	0	8	0
			2406	1517	411	460	18			

- Molecule 2 is NADPH DIHYDRO-NICOTINAMIDE-ADENINE-DINUCLEOTIDE PHOSPHATE (three-letter code: NDP) (formula:  $C_{21}H_{30}N_7O_{17}P_3$ ).



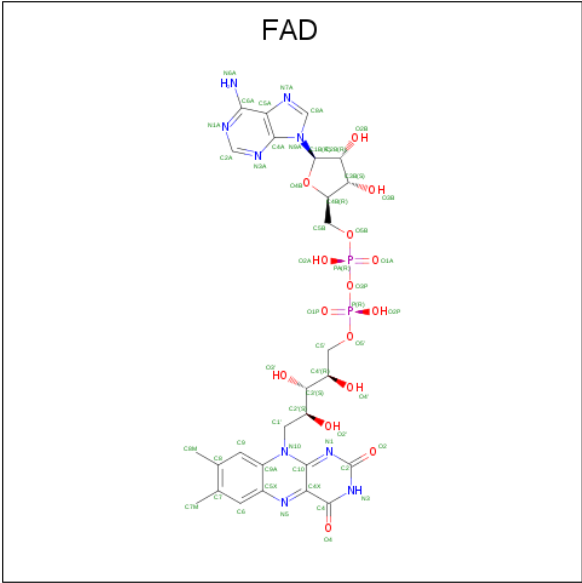
Mol	Chain	Residues	Atoms					ZeroOcc	AltConf
2	A	1	Total	C	N	O	P	0	0
			32	11	5	13	3		
2	B	1	Total	C	N	O	P	0	0
			31	10	5	13	3		

- Molecule 3 is SULFATE ION (three-letter code: SO4) (formula:  $O_4S$ ).



Mol	Chain	Residues	Atoms			ZeroOcc	AltConf
3	A	1	Total	O	S	0	0
			5	4	1		

- Molecule 4 is FLAVIN-ADENINE DINUCLEOTIDE (three-letter code: FAD) (formula: C<sub>27</sub>H<sub>33</sub>N<sub>9</sub>O<sub>15</sub>P<sub>2</sub>).



Mol	Chain	Residues	Atoms				ZeroOcc	AltConf
4	A	1	Total	C	N	O	P	0
			53	27	9	15	2	
4	B	1	Total	C	N	O	P	0
			53	27	9	15	2	

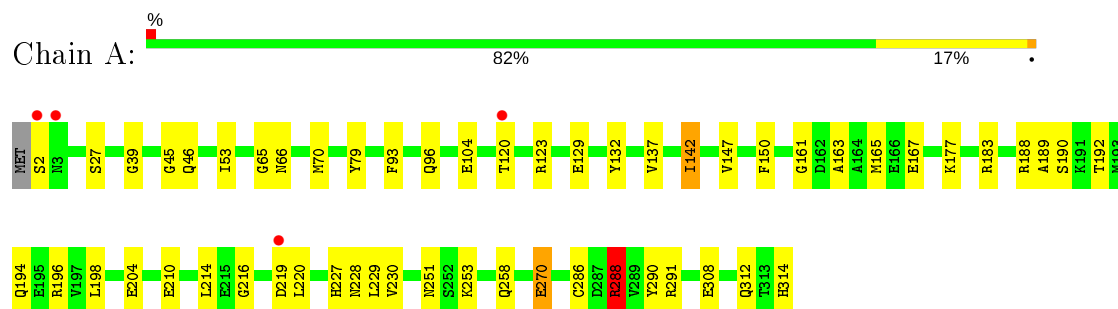
- Molecule 5 is water.

Mol	Chain	Residues	Atoms		ZeroOcc	AltConf
5	A	298	Total 298	O 298	0	0
5	B	312	Total 312	O 312	0	0

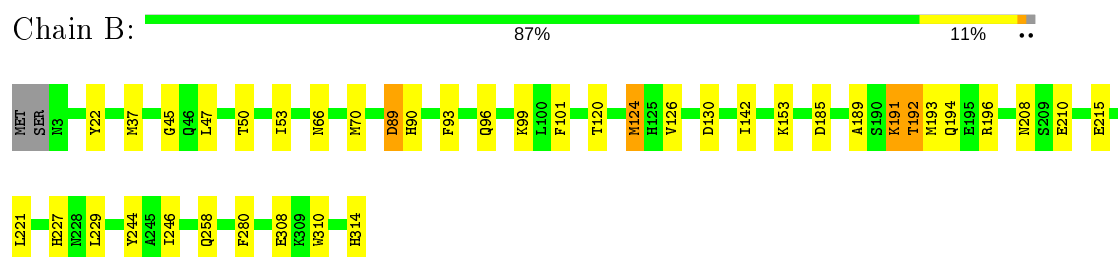
### 3 Residue-property plots

These plots are drawn for all protein, RNA and DNA chains in the entry. The first graphic for a chain summarises the proportions of the various outlier classes displayed in the second graphic. The second graphic shows the sequence view annotated by issues in geometry and electron density. Residues are color-coded according to the number of geometric quality criteria for which they contain at least one outlier: green = 0, yellow = 1, orange = 2 and red = 3 or more. A red dot above a residue indicates a poor fit to the electron density ( $\text{RSRZ} > 2$ ). Stretches of 2 or more consecutive residues without any outlier are shown as a green connector. Residues present in the sample, but not in the model, are shown in grey.

#### • Molecule 1: THIOREDOXIN REDUCTASE



#### • Molecule 1: THIOREDOXIN REDUCTASE



## 4 Data and refinement statistics

Property	Value	Source
Space group	P 21 21 21	Depositor
Cell constants a, b, c, $\alpha$ , $\beta$ , $\gamma$	65.82Å 91.87Å 103.76Å 90.00° 90.00° 90.00°	Depositor
Resolution (Å)	103.76 – 1.66 65.82 – 1.66	Depositor EDS
% Data completeness (in resolution range)	79.9 (103.76-1.66) 79.9 (65.82-1.66)	Depositor EDS
$R_{merge}$	0.04	Depositor
$R_{sym}$	(Not available)	Depositor
$\langle I/\sigma(I) \rangle$ <sup>1</sup>	1.56 (at 1.66Å)	Xtriage
Refinement program	REFMAC 5.5.0109	Depositor
R, $R_{free}$	0.169 , 0.221 0.167 , 0.219	Depositor DCC
$R_{free}$ test set	3016 reflections (5.03%)	wwPDB-VP
Wilson B-factor (Å <sup>2</sup> )	24.4	Xtriage
Anisotropy	0.123	Xtriage
Bulk solvent $k_{sol}$ (e/Å <sup>3</sup> ), $B_{sol}$ (Å <sup>2</sup> )	0.34 , 39.0	EDS
L-test for twinning <sup>2</sup>	$\langle  L  \rangle = 0.49$ , $\langle L^2 \rangle = 0.32$	Xtriage
Estimated twinning fraction	No twinning to report.	Xtriage
$F_o, F_c$ correlation	0.97	EDS
Total number of atoms	5570	wwPDB-VP
Average B, all atoms (Å <sup>2</sup> )	24.0	wwPDB-VP

Xtriage's analysis on translational NCS is as follows: *The largest off-origin peak in the Patterson function is 4.01% of the height of the origin peak. No significant pseudotranslation is detected.*

<sup>1</sup>Intensities estimated from amplitudes.

<sup>2</sup>Theoretical values of  $\langle |L| \rangle$ ,  $\langle L^2 \rangle$  for acentric reflections are 0.5, 0.333 respectively for untwinned datasets, and 0.375, 0.2 for perfectly twinned datasets.

## 5 Model quality

### 5.1 Standard geometry

Bond lengths and bond angles in the following residue types are not validated in this section: NDP, SO4, FAD

The Z score for a bond length (or angle) is the number of standard deviations the observed value is removed from the expected value. A bond length (or angle) with  $|Z| > 5$  is considered an outlier worth inspection. RMSZ is the root-mean-square of all Z scores of the bond lengths (or angles).

Mol	Chain	Bond lengths		Bond angles	
		RMSZ	# Z  >5	RMSZ	# Z  >5
1	A	1.23	6/2426 (0.2%)	0.98	2/3284 (0.1%)
1	B	1.21	4/2453 (0.2%)	1.02	6/3322 (0.2%)
All	All	1.22	10/4879 (0.2%)	1.00	8/6606 (0.1%)

Chiral center outliers are detected by calculating the chiral volume of a chiral center and verifying if the center is modelled as a planar moiety or with the opposite hand. A planarity outlier is detected by checking planarity of atoms in a peptide group, atoms in a mainchain group or atoms of a sidechain that are expected to be planar.

Mol	Chain	#Chirality outliers	#Planarity outliers
1	A	0	1

All (10) bond length outliers are listed below:

Mol	Chain	Res	Type	Atoms	Z	Observed(Å)	Ideal(Å)
1	A	286	CYS	CB-SG	-8.43	1.68	1.82
1	A	129	GLU	CD-OE2	-5.36	1.19	1.25
1	A	79	TYR	CD2-CE2	5.29	1.47	1.39
1	A	288	ARG	CG-CD	5.18	1.65	1.51
1	A	270	GLU	CG-CD	5.16	1.59	1.51
1	A	290	TYR	CD1-CE1	5.07	1.47	1.39
1	B	308	GLU	CB-CG	5.03	1.61	1.52
1	B	280	PHE	CE2-CZ	5.03	1.47	1.37
1	B	280	PHE	CD2-CE2	5.03	1.49	1.39
1	B	22	TYR	CD2-CE2	5.02	1.46	1.39

All (8) bond angle outliers are listed below:

Mol	Chain	Res	Type	Atoms	Z	Observed(°)	Ideal(°)
1	A	183	ARG	NE-CZ-NH2	-7.42	116.59	120.30

*Continued on next page...*

*Continued from previous page...*

Mol	Chain	Res	Type	Atoms	Z	Observed(°)	Ideal(°)
1	B	89[A]	ASP	CB-CG-OD1	6.41	124.07	118.30
1	B	89[B]	ASP	CB-CG-OD1	6.41	124.07	118.30
1	B	130	ASP	CB-CG-OD1	6.40	124.06	118.30
1	B	47	LEU	CB-CG-CD1	-6.39	100.13	111.00
1	B	130	ASP	CB-CG-OD2	-5.66	113.20	118.30
1	B	229	LEU	CA-CB-CG	5.54	128.04	115.30
1	A	288	ARG	NE-CZ-NH1	-5.38	117.61	120.30

There are no chirality outliers.

All (1) planarity outliers are listed below:

Mol	Chain	Res	Type	Group
1	A	2	SER	Peptide

## 5.2 Too-close contacts ⓘ

In the following table, the Non-H and H(model) columns list the number of non-hydrogen atoms and hydrogen atoms in the chain respectively. The H(added) column lists the number of hydrogen atoms added and optimized by MolProbity. The Clashes column lists the number of clashes within the asymmetric unit, whereas Symm-Clashes lists symmetry related clashes.

Mol	Chain	Non-H	H(model)	H(added)	Clashes	Symm-Clashes
1	A	2380	0	2355	46	0
1	B	2406	0	2360	37	0
2	A	32	0	11	0	0
2	B	31	0	11	1	0
3	A	5	0	0	0	0
4	A	53	0	31	2	0
4	B	53	0	31	1	0
5	A	298	0	0	10	0
5	B	312	0	0	14	0
All	All	5570	0	4799	82	0

The all-atom clashscore is defined as the number of clashes found per 1000 atoms (including hydrogen atoms). The all-atom clashscore for this structure is 8.

All (82) close contacts within the same asymmetric unit are listed below, sorted by their clash magnitude.

Atom-1	Atom-2	Interatomic distance (Å)	Clash overlap (Å)
1:A:291[B]:ARG:CG	1:A:291[B]:ARG:HH11	1.30	1.30

*Continued on next page...*

*Continued from previous page...*

Atom-1	Atom-2	Interatomic distance (Å)	Clash overlap (Å)
1:A:291[B]:ARG:HG2	1:A:291[B]:ARG:NH1	1.38	1.13
1:A:314:HIS:C	5:A:2154:HOH:O	2.01	0.96
1:A:291[B]:ARG:CB	1:A:291[B]:ARG:HH11	1.77	0.96
1:A:291[B]:ARG:HG2	1:A:291[B]:ARG:HH11	0.81	0.96
1:B:99:LYS:HE3	5:B:2108:HOH:O	1.71	0.91
1:A:120[A]:THR:CG2	5:A:2037:HOH:O	2.19	0.89
1:A:120[A]:THR:OG1	5:A:2159:HOH:O	1.90	0.86
1:A:165[B]:MET:SD	1:A:189:ALA:CB	2.66	0.83
1:A:27:SER:HB2	1:B:192:THR:HG21	1.64	0.80
1:A:308:GLU:HG2	5:A:2287:HOH:O	1.83	0.78
1:A:291[B]:ARG:CG	1:A:291[B]:ARG:NH1	2.06	0.77
1:A:270:GLU:HG3	5:A:2259:HOH:O	1.83	0.77
1:B:120[A]:THR:CG2	5:B:2038:HOH:O	2.33	0.76
1:B:210:GLU:OE2	1:B:227:HIS:HD2	1.71	0.73
1:B:70[B]:MET:O	1:B:70[B]:MET:HE3	1.88	0.73
1:B:193:MET:HE1	1:B:196:ARG:HD3	1.71	0.71
1:A:210:GLU:OE2	1:A:227:HIS:HD2	1.74	0.69
1:A:93:PHE:H	1:A:258:GLN:NE2	1.90	0.69
1:A:196:ARG:HD3	5:A:2206:HOH:O	1.93	0.69
1:A:53:ILE:HD11	1:A:65:GLY:HA2	1.75	0.68
1:B:37:MET:HG3	5:B:2034:HOH:O	1.95	0.65
1:A:165[B]:MET:SD	1:A:189:ALA:HB1	2.37	0.64
1:B:120[A]:THR:HG22	5:B:2038:HOH:O	1.98	0.63
1:A:120[A]:THR:HG21	5:A:2037:HOH:O	1.95	0.61
1:A:291[B]:ARG:CB	1:A:291[B]:ARG:NH1	2.52	0.61
1:B:93:PHE:H	1:B:258:GLN:NE2	1.99	0.61
1:B:194:GLN:NE2	5:B:2196:HOH:O	2.33	0.60
1:A:190:SER:O	1:A:194:GLN:HG3	2.02	0.60
1:A:165[B]:MET:SD	1:A:189:ALA:HB3	2.42	0.58
1:B:66:ASN:O	1:B:70[A]:MET:HG3	2.04	0.57
1:A:120[A]:THR:HG23	1:A:251:ASN:OD1	2.05	0.57
1:A:165[B]:MET:HE1	1:A:194:GLN:HG2	1.87	0.57
1:A:66:ASN:O	1:A:70[A]:MET:HG3	2.05	0.56
1:B:50:THR:HG21	1:B:53:ILE:HD11	1.88	0.56
1:B:153:LYS:HE3	5:B:2064:HOH:O	2.06	0.55
1:B:310:TRP:O	1:B:314:HIS:HD2	1.90	0.54
1:A:45:GLY:HA2	4:A:1317:FAD:O3B	2.08	0.53
1:A:161:GLY:O	1:A:165[B]:MET:HG3	2.08	0.53
1:B:70[B]:MET:HE1	5:B:2073:HOH:O	2.07	0.53
1:A:163:ALA:O	1:A:167:GLU:HG2	2.08	0.52
1:A:288:ARG:HH11	1:A:288:ARG:HG2	1.75	0.51

*Continued on next page...*

*Continued from previous page...*

Atom-1	Atom-2	Interatomic distance (Å)	Clash overlap (Å)
1:A:39:GLY:O	1:A:120[B]:THR:HG21	2.10	0.50
1:B:96:GLN:HE22	1:B:310:TRP:HH2	1.58	0.49
1:A:288:ARG:NH1	1:A:288:ARG:HG2	2.28	0.49
1:B:99:LYS:CE	5:B:2108:HOH:O	2.44	0.49
1:B:124[A]:MET:HE3	1:B:244:TYR:CE1	2.48	0.49
1:A:147:VAL:HG22	1:A:150:PHE:CD2	2.48	0.48
1:A:120[A]:THR:HG22	5:A:2037:HOH:O	2.02	0.48
1:B:50:THR:CG2	1:B:53:ILE:HD11	2.44	0.47
1:B:90[B]:HIS:CE1	1:B:101:PHE:CG	3.02	0.47
1:A:177:LYS:HD2	1:A:204:GLU:OE2	2.15	0.47
1:B:124[A]:MET:HG2	1:B:126:VAL:HG13	1.96	0.46
1:B:45:GLY:HA2	4:B:1316:FAD:O3B	2.16	0.46
1:B:185:ASP:HB3	1:B:208:ASN:HD21	1.79	0.46
1:B:124[A]:MET:HE3	1:B:244:TYR:HE1	1.81	0.46
1:A:194:GLN:O	1:A:198:LEU:HD13	2.16	0.46
1:B:142:ILE:HD11	5:B:2172:HOH:O	2.15	0.46
1:A:219:ASP:C	1:A:220:LEU:HD12	2.36	0.45
1:A:230:VAL:CG2	5:A:2096:HOH:O	2.64	0.45
1:A:312:GLN:NE2	5:A:2287:HOH:O	2.43	0.45
1:B:142:ILE:HD12	5:B:2153:HOH:O	2.14	0.45
1:B:37:MET:CG	5:B:2034:HOH:O	2.58	0.45
1:B:191:LYS:HA	1:B:191:LYS:HD3	1.67	0.45
1:A:53:ILE:CD1	1:A:65:GLY:HA2	2.44	0.44
1:A:137:VAL:HG21	1:A:214:LEU:HD13	2.00	0.44
1:A:46:GLN:HE21	4:A:1317:FAD:HM81	1.83	0.44
1:B:191:LYS:HB3	5:B:2197:HOH:O	2.17	0.44
1:B:124[A]:MET:HE2	1:B:246:ILE:HD13	2.00	0.43
1:A:194:GLN:HB3	1:A:194:GLN:HE21	1.57	0.43
1:A:132:TYR:CZ	1:A:216:GLY:HA3	2.53	0.43
1:A:142:ILE:HD13	1:A:142:ILE:HA	1.87	0.43
1:A:253:LYS:HB2	1:A:253:LYS:HE3	1.70	0.42
1:B:215:GLU:O	1:B:221:LEU:HD12	2.19	0.42
1:B:227:HIS:HE1	5:B:2231:HOH:O	2.02	0.42
1:B:89[B]:ASP:OD2	1:B:90[B]:HIS:HD2	2.04	0.41
1:A:210:GLU:CD	1:A:229:LEU:HD21	2.41	0.41
1:B:193:MET:CE	1:B:196:ARG:HH11	2.33	0.41
1:A:228:ASN:OD1	1:A:230:VAL:HG22	2.21	0.40
1:B:246:ILE:HA	2:B:1315:NDP:O4B	2.22	0.40
1:B:120[B]:THR:HG22	5:B:2133:HOH:O	2.22	0.40
1:B:193:MET:HE3	1:B:196:ARG:HH11	1.86	0.40

There are no symmetry-related clashes.

## 5.3 Torsion angles [i](#)

### 5.3.1 Protein backbone [i](#)

In the following table, the Percentiles column shows the percent Ramachandran outliers of the chain as a percentile score with respect to all X-ray entries followed by that with respect to entries of similar resolution.

The Analysed column shows the number of residues for which the backbone conformation was analysed, and the total number of residues.

Mol	Chain	Analysed	Favoured	Allowed	Outliers	Percentiles	
1	A	316/314 (101%)	309 (98%)	7 (2%)	0	100	100
1	B	318/314 (101%)	310 (98%)	7 (2%)	1 (0%)	41	22
All	All	634/628 (101%)	619 (98%)	14 (2%)	1 (0%)	47	28

All (1) Ramachandran outliers are listed below:

Mol	Chain	Res	Type
1	B	189	ALA

### 5.3.2 Protein sidechains [i](#)

In the following table, the Percentiles column shows the percent sidechain outliers of the chain as a percentile score with respect to all X-ray entries followed by that with respect to entries of similar resolution.

The Analysed column shows the number of residues for which the sidechain conformation was analysed, and the total number of residues.

Mol	Chain	Analysed	Rotameric	Outliers	Percentiles	
1	A	249/251 (99%)	242 (97%)	7 (3%)	43	18
1	B	254/251 (101%)	250 (98%)	4 (2%)	62	41
All	All	503/502 (100%)	492 (98%)	11 (2%)	55	27

All (11) residues with a non-rotameric sidechain are listed below:

Mol	Chain	Res	Type
1	A	96	GLN
1	A	104	GLU
1	A	123	ARG
1	A	142	ILE
1	A	188	ARG

*Continued on next page...*

*Continued from previous page...*

Mol	Chain	Res	Type
1	A	192	THR
1	A	288	ARG
1	B	124[A]	MET
1	B	124[B]	MET
1	B	191	LYS
1	B	192	THR

Some sidechains can be flipped to improve hydrogen bonding and reduce clashes. All (12) such sidechains are listed below:

Mol	Chain	Res	Type
1	A	46	GLN
1	A	194	GLN
1	A	208	ASN
1	A	227	HIS
1	A	258	GLN
1	B	61	ASN
1	B	66	ASN
1	B	194	GLN
1	B	208	ASN
1	B	227	HIS
1	B	258	GLN
1	B	314	HIS

### 5.3.3 RNA ⓘ

There are no RNA molecules in this entry.

## 5.4 Non-standard residues in protein, DNA, RNA chains ⓘ

There are no non-standard protein/DNA/RNA residues in this entry.

### 5.5 Carbohydrates ⓘ

There are no carbohydrates in this entry.

### 5.6 Ligand geometry ⓘ

5 ligands are modelled in this entry.

In the following table, the Counts columns list the number of bonds (or angles) for which Mogul statistics could be retrieved, the number of bonds (or angles) that are observed in the model and the number of bonds (or angles) that are defined in the Chemical Component Dictionary. The Link column lists molecule types, if any, to which the group is linked. The Z score for a bond length (or angle) is the number of standard deviations the observed value is removed from the expected value. A bond length (or angle) with  $|Z| > 2$  is considered an outlier worth inspection. RMSZ is the root-mean-square of all Z scores of the bond lengths (or angles).

Mol	Type	Chain	Res	Link	Bond lengths			Bond angles		
					Counts	RMSZ	# $ Z  > 2$	Counts	RMSZ	# $ Z  > 2$
3	SO4	A	1316	-	4,4,4	0.35	0	6,6,6	0.25	0
4	FAD	A	1317	-	51,58,58	2.01	11 (21%)	60,89,89	1.91	10 (16%)
2	NDP	B	1315	-	27,33,52	1.68	6 (22%)	35,52,80	1.75	6 (17%)
2	NDP	A	1315	-	28,34,52	1.39	4 (14%)	34,53,80	1.79	9 (26%)
4	FAD	B	1316	-	51,58,58	2.02	12 (23%)	60,89,89	2.18	14 (23%)

In the following table, the Chirals column lists the number of chiral outliers, the number of chiral centers analysed, the number of these observed in the model and the number defined in the Chemical Component Dictionary. Similar counts are reported in the Torsion and Rings columns. '-' means no outliers of that kind were identified.

Mol	Type	Chain	Res	Link	Chirals	Torsions	Rings
4	FAD	A	1317	-	-	4/30/50/50	0/6/6/6
2	NDP	B	1315	-	-	5/17/37/77	0/3/3/5
2	NDP	A	1315	-	-	4/20/40/77	0/3/3/5
4	FAD	B	1316	-	-	5/30/50/50	0/6/6/6

All (33) bond length outliers are listed below:

Mol	Chain	Res	Type	Atoms	Z	Observed(Å)	Ideal(Å)
4	A	1317	FAD	C10-N1	6.86	1.42	1.33
4	A	1317	FAD	C4X-N5	6.70	1.42	1.33
4	B	1316	FAD	C2A-N3A	5.27	1.40	1.32
4	B	1316	FAD	C4X-N5	5.05	1.40	1.33
4	B	1316	FAD	C1'-N10	4.86	1.53	1.48
4	B	1316	FAD	C10-N1	4.57	1.39	1.33
4	B	1316	FAD	C4-N3	4.46	1.40	1.33
2	B	1315	NDP	C4A-N3A	4.31	1.41	1.35
4	A	1317	FAD	C9A-N10	4.20	1.44	1.38
4	B	1316	FAD	C9A-N10	4.12	1.44	1.38
2	A	1315	NDP	C2A-N3A	3.96	1.38	1.32
2	B	1315	NDP	C2A-N3A	3.88	1.38	1.32
4	A	1317	FAD	C4-N3	3.71	1.39	1.33

*Continued on next page...*

*Continued from previous page...*

Mol	Chain	Res	Type	Atoms	Z	Observed(Å)	Ideal(Å)
4	B	1316	FAD	C4X-C10	3.67	1.42	1.38
4	A	1317	FAD	C2A-N3A	3.46	1.37	1.32
4	A	1317	FAD	C5X-N5	3.33	1.40	1.35
2	A	1315	NDP	P2B-O2B	3.01	1.65	1.59
2	B	1315	NDP	PN-O5D	2.93	1.66	1.54
4	B	1316	FAD	C5X-N5	2.89	1.40	1.35
2	B	1315	NDP	O4B-C1B	2.86	1.45	1.41
2	A	1315	NDP	PN-O5D	2.65	1.68	1.59
2	B	1315	NDP	C2A-N1A	2.57	1.38	1.33
4	A	1317	FAD	C1'-N10	2.56	1.50	1.48
4	B	1316	FAD	P-O2P	-2.50	1.43	1.55
4	A	1317	FAD	O4B-C1B	2.49	1.44	1.41
4	A	1317	FAD	C2A-N1A	2.43	1.38	1.33
4	B	1316	FAD	C9-C8	2.33	1.43	1.37
2	A	1315	NDP	C2A-N1A	2.29	1.38	1.33
2	B	1315	NDP	O4B-C4B	-2.28	1.39	1.45
4	B	1316	FAD	C4A-N3A	-2.26	1.32	1.35
4	A	1317	FAD	C9-C8	2.26	1.43	1.37
4	B	1316	FAD	C7M-C7	2.20	1.55	1.51
4	A	1317	FAD	C4X-C10	2.14	1.41	1.38

All (39) bond angle outliers are listed below:

Mol	Chain	Res	Type	Atoms	Z	Observed(°)	Ideal(°)
4	B	1316	FAD	C4-N3-C2	9.17	122.89	115.14
4	A	1317	FAD	C4-N3-C2	7.67	121.61	115.14
4	A	1317	FAD	N3A-C2A-N1A	-7.42	117.08	128.68
4	B	1316	FAD	N3A-C2A-N1A	-6.82	118.02	128.68
2	B	1315	NDP	N3A-C2A-N1A	-5.86	119.52	128.68
2	A	1315	NDP	N3A-C2A-N1A	-5.80	119.61	128.68
4	B	1316	FAD	C1'-N10-C9A	5.13	122.33	118.29
2	B	1315	NDP	O2N-PN-O1N	4.38	127.82	110.68
4	B	1316	FAD	C4X-C4-N3	-4.06	117.88	123.43
4	B	1316	FAD	C5X-C9A-N10	3.80	120.47	117.72
4	A	1317	FAD	C4X-C4-N3	-3.68	118.41	123.43
4	B	1316	FAD	C4-C4X-C10	-3.20	117.83	119.95
4	A	1317	FAD	C1'-N10-C10	3.08	121.17	118.41
2	A	1315	NDP	PN-O3-PA	-3.05	122.35	132.83
2	A	1315	NDP	C1B-N9A-C4A	-3.04	121.31	126.64
4	B	1316	FAD	P-O3P-PA	2.90	142.78	132.83
2	A	1315	NDP	C2A-N1A-C6A	2.89	123.70	118.75
4	B	1316	FAD	C4'-C3'-C2'	-2.80	107.54	113.36

*Continued on next page...*

*Continued from previous page...*

Mol	Chain	Res	Type	Atoms	Z	Observed(°)	Ideal(°)
2	B	1315	NDP	O2A-PA-O1A	2.71	125.66	112.24
2	A	1315	NDP	O2N-PN-O1N	2.70	125.61	112.24
4	B	1316	FAD	C2A-N1A-C6A	2.70	123.37	118.75
2	B	1315	NDP	O5B-C5B-C4B	-2.58	100.12	108.99
4	A	1317	FAD	C4A-C5A-N7A	-2.54	106.75	109.40
2	A	1315	NDP	O5B-C5B-C4B	-2.54	100.26	108.99
4	B	1316	FAD	O5'-C5'-C4'	-2.52	102.64	109.36
4	A	1317	FAD	O5'-C5'-C4'	-2.39	102.98	109.36
4	B	1316	FAD	C5'-C4'-C3'	-2.37	107.63	112.20
2	B	1315	NDP	C5B-C4B-C3B	-2.34	106.42	115.18
4	B	1316	FAD	C4A-C5A-N7A	-2.28	107.02	109.40
4	A	1317	FAD	C9A-N10-C10	-2.21	119.02	121.91
4	B	1316	FAD	C9A-N10-C10	-2.14	119.11	121.91
4	A	1317	FAD	O5B-C5B-C4B	-2.12	101.68	108.99
4	A	1317	FAD	O2B-C2B-C3B	-2.10	105.02	111.82
2	B	1315	NDP	O3-PN-O1N	-2.09	99.57	111.19
4	B	1316	FAD	C5A-C6A-N1A	-2.07	115.67	120.35
2	A	1315	NDP	O2X-P2B-O1X	2.04	118.67	110.68
4	A	1317	FAD	O2'-C2'-C3'	2.04	114.05	109.10
2	A	1315	NDP	O2A-PA-O5B	-2.03	98.34	107.75
2	A	1315	NDP	C5A-C6A-N6A	2.02	123.43	120.35

There are no chirality outliers.

All (18) torsion outliers are listed below:

Mol	Chain	Res	Type	Atoms
2	B	1315	NDP	C5B-O5B-PA-O2A
4	B	1316	FAD	O4B-C4B-C5B-O5B
4	B	1316	FAD	C3B-C4B-C5B-O5B
2	A	1315	NDP	C1B-C2B-O2B-P2B
2	A	1315	NDP	C3B-C2B-O2B-P2B
2	B	1315	NDP	C3B-C4B-C5B-O5B
2	B	1315	NDP	O4B-C4B-C5B-O5B
4	A	1317	FAD	PA-O3P-P-O5'
4	B	1316	FAD	PA-O3P-P-O5'
2	B	1315	NDP	PA-O3-PN-O2N
4	B	1316	FAD	P-O3P-PA-O2A
2	B	1315	NDP	C5B-O5B-PA-O1A
4	A	1317	FAD	P-O3P-PA-O2A
4	B	1316	FAD	P-O3P-PA-O1A
2	A	1315	NDP	O4B-C4B-C5B-O5B
2	A	1315	NDP	C5D-O5D-PN-O1N

*Continued on next page...*

*Continued from previous page...*

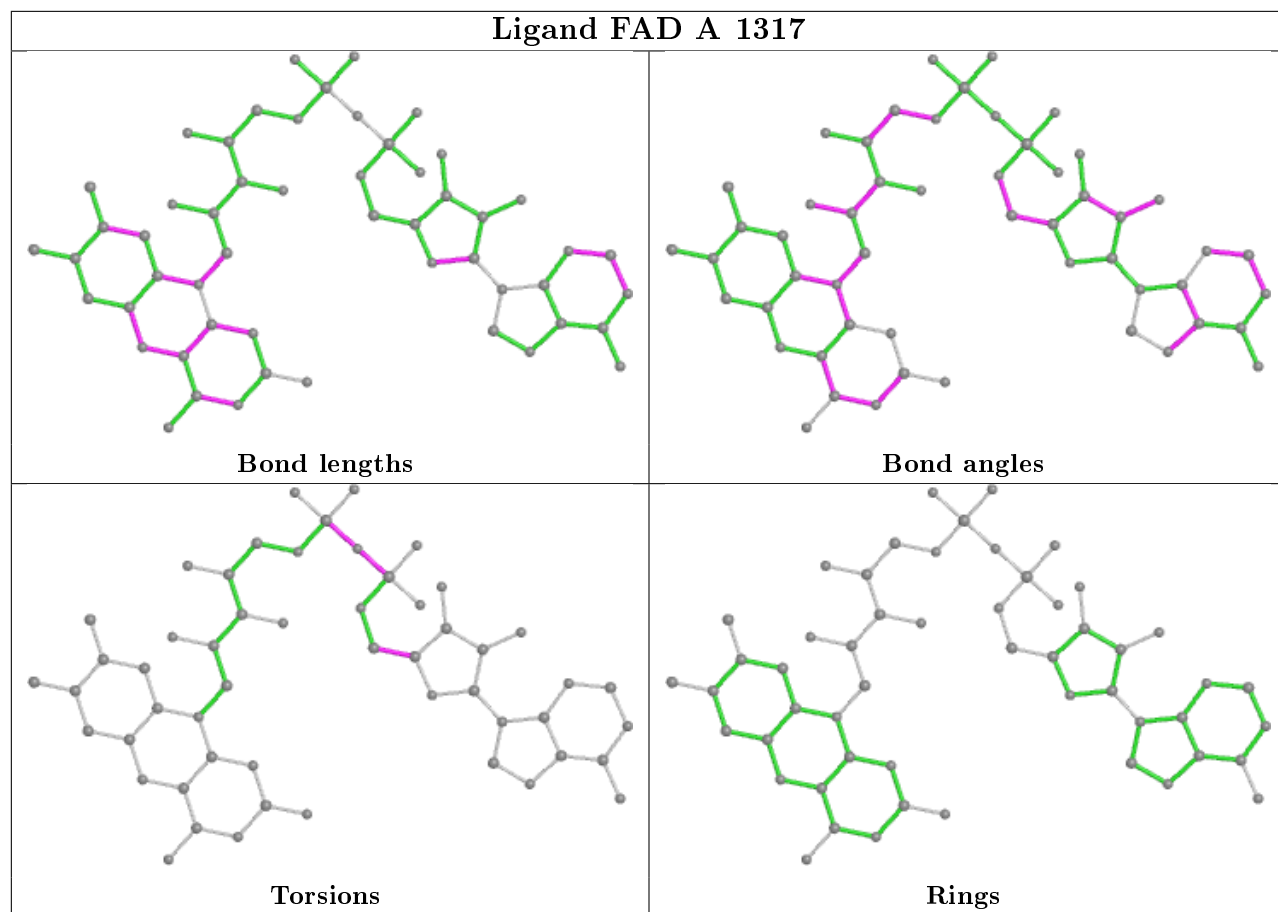
Mol	Chain	Res	Type	Atoms
4	A	1317	FAD	O4B-C4B-C5B-O5B
4	A	1317	FAD	C3B-C4B-C5B-O5B

There are no ring outliers.

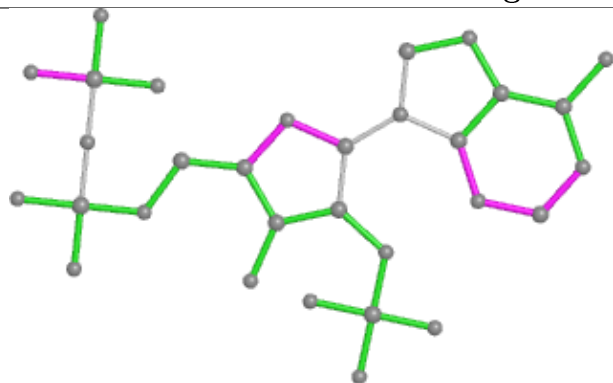
3 monomers are involved in 4 short contacts:

Mol	Chain	Res	Type	Clashes	Symm-Clashes
4	A	1317	FAD	2	0
2	B	1315	NDP	1	0
4	B	1316	FAD	1	0

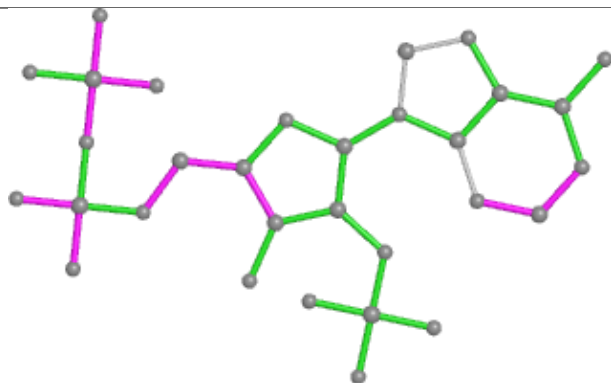
The following is a two-dimensional graphical depiction of Mogul quality analysis of bond lengths, bond angles, torsion angles, and ring geometry for all instances of the Ligand of Interest. In addition, ligands with molecular weight > 250 and outliers as shown on the validation Tables will also be included. For torsion angles, if less than 5% of the Mogul distribution of torsion angles is within 10 degrees of the torsion angle in question, then that torsion angle is considered an outlier. Any bond that is central to one or more torsion angles identified as an outlier by Mogul will be highlighted in the graph. For rings, the root-mean-square deviation (RMSD) between the ring in question and similar rings identified by Mogul is calculated over all ring torsion angles. If the average RMSD is greater than 60 degrees and the minimal RMSD between the ring in question and any Mogul-identified rings is also greater than 60 degrees, then that ring is considered an outlier. The outliers are highlighted in purple. The color gray indicates Mogul did not find sufficient equivalents in the CSD to analyse the geometry.



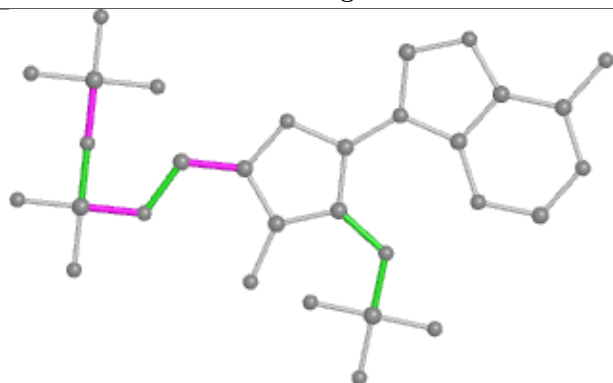
## Ligand NDP B 1315



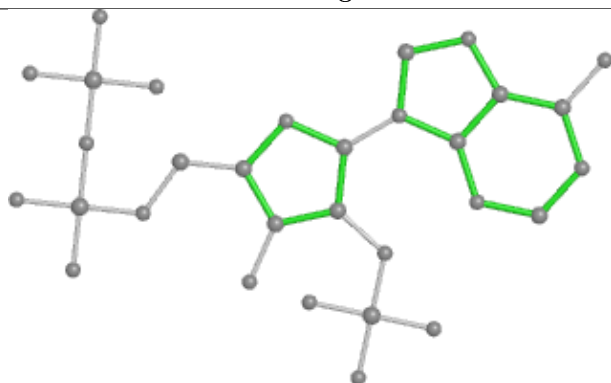
Bond lengths



Bond angles

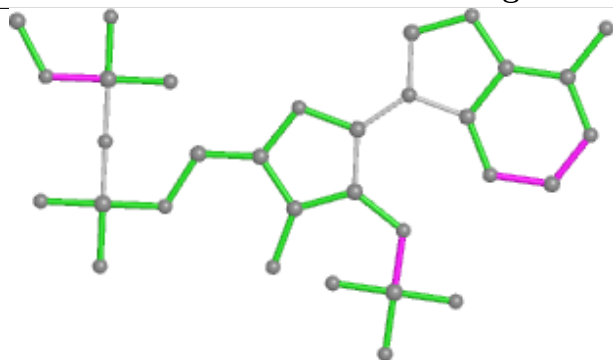


Torsions

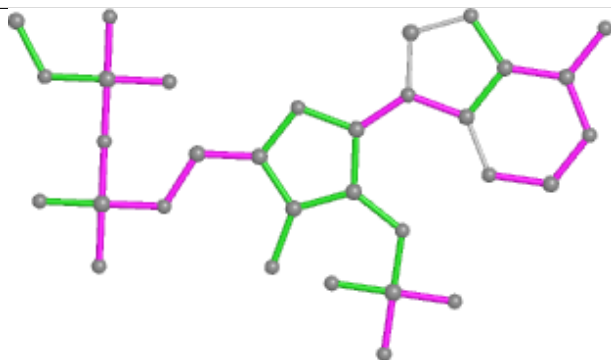


Rings

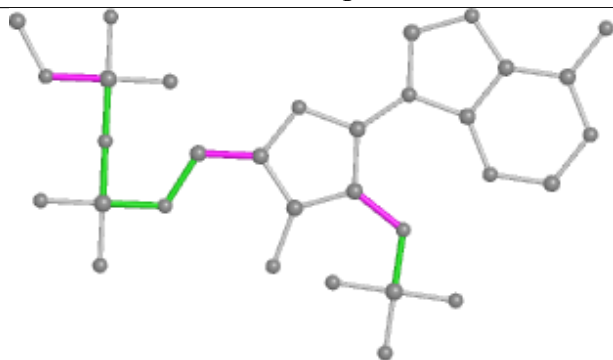
## Ligand NDP A 1315



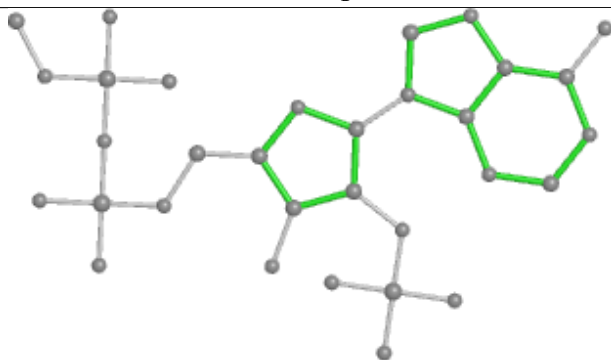
Bond lengths



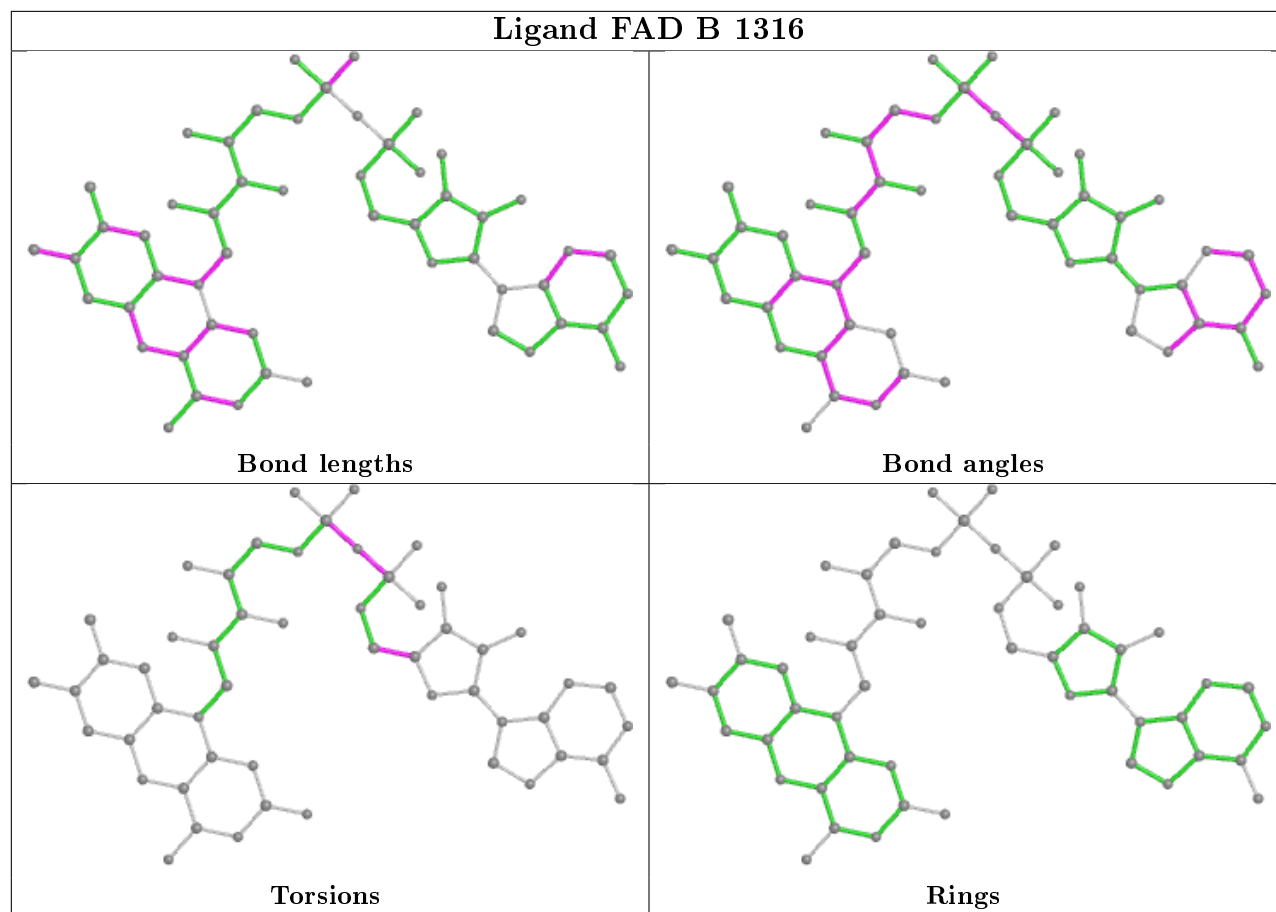
Bond angles



Torsions



Rings



## 5.7 Other polymers [i](#)

There are no such residues in this entry.

## 5.8 Polymer linkage issues [i](#)

There are no chain breaks in this entry.

## 6 Fit of model and data ⓘ

### 6.1 Protein, DNA and RNA chains ⓘ

In the following table, the column labelled ‘#RSRZ> 2’ contains the number (and percentage) of RSRZ outliers, followed by percent RSRZ outliers for the chain as percentile scores relative to all X-ray entries and entries of similar resolution. The OWAB column contains the minimum, median, 95<sup>th</sup> percentile and maximum values of the occupancy-weighted average B-factor per residue. The column labelled ‘Q< 0.9’ lists the number of (and percentage) of residues with an average occupancy less than 0.9.

Mol	Chain	Analysed	<RSRZ>	#RSRZ>2	OWAB(Å <sup>2</sup> )	Q<0.9
1	A	313/314 (99%)	-0.38	4 (1%) 77 80	12, 22, 37, 48	0
1	B	312/314 (99%)	-0.46	0 100 100	13, 21, 35, 49	0
All	All	625/628 (99%)	-0.42	4 (0%) 89 90	12, 22, 36, 49	0

All (4) RSRZ outliers are listed below:

Mol	Chain	Res	Type	RSRZ
1	A	2	SER	4.8
1	A	3	ASN	3.7
1	A	219	ASP	2.3
1	A	120[A]	THR	2.3

### 6.2 Non-standard residues in protein, DNA, RNA chains ⓘ

There are no non-standard protein/DNA/RNA residues in this entry.

### 6.3 Carbohydrates ⓘ

There are no carbohydrates in this entry.

### 6.4 Ligands ⓘ

In the following table, the Atoms column lists the number of modelled atoms in the group and the number defined in the chemical component dictionary. The B-factors column lists the minimum, median, 95<sup>th</sup> percentile and maximum values of B factors of atoms in the group. The column labelled ‘Q< 0.9’ lists the number of atoms with occupancy less than 0.9.

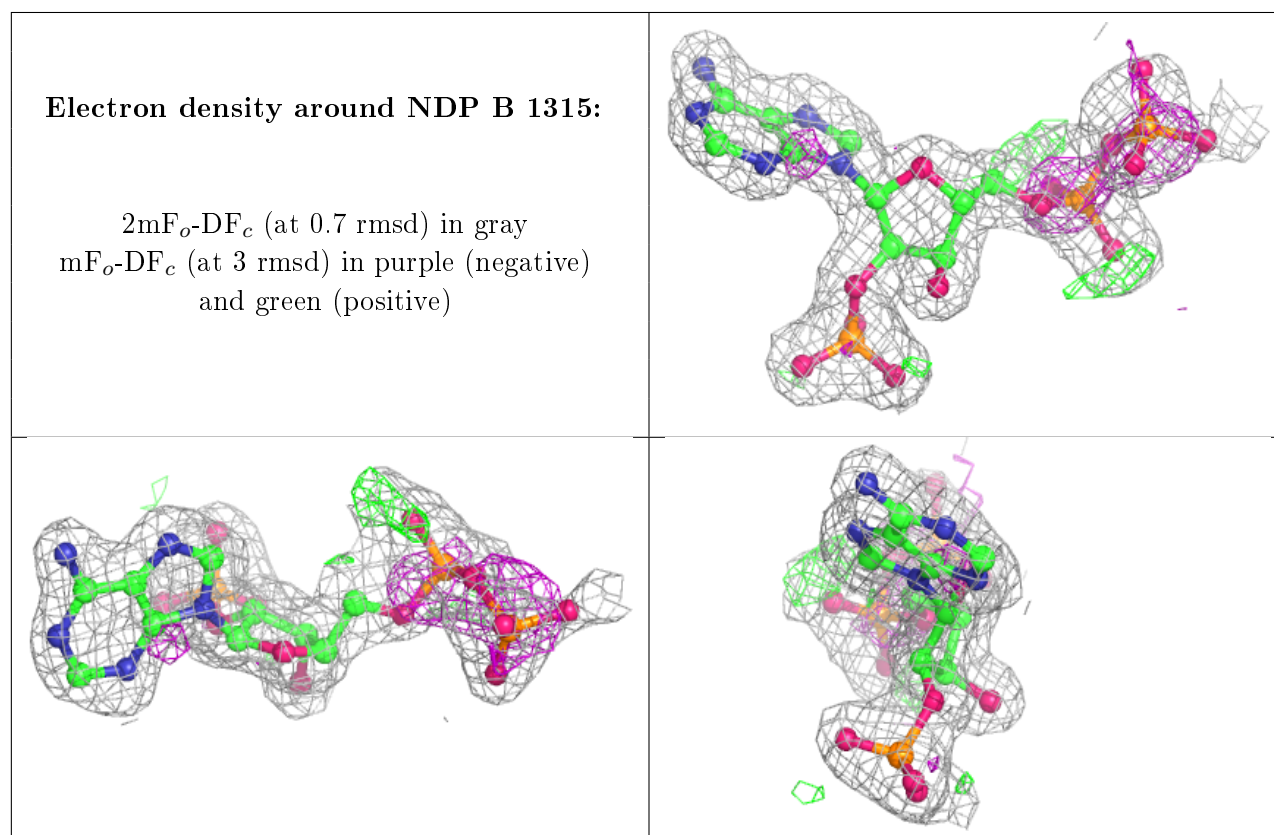
Mol	Type	Chain	Res	Atoms	RSCC	RSR	B-factors(Å <sup>2</sup> )	Q<0.9
2	NDP	B	1315	31/48	0.90	0.12	24,29,51,53	0

*Continued on next page...*

*Continued from previous page...*

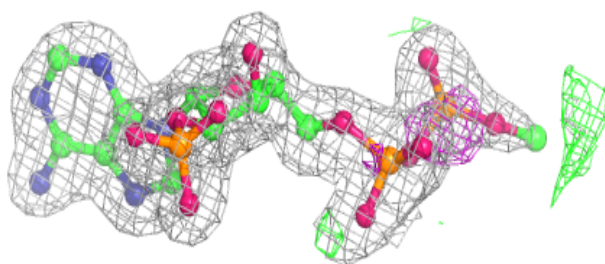
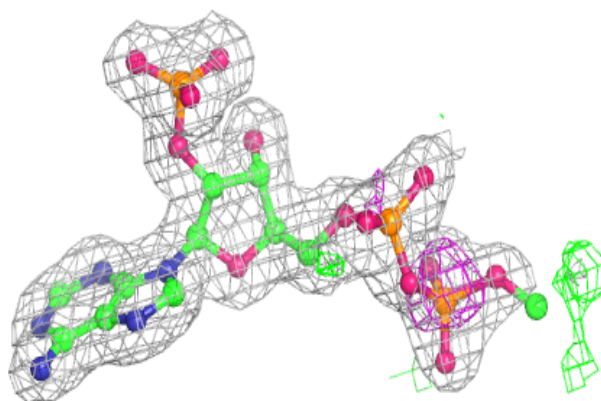
Mol	Type	Chain	Res	Atoms	RSCC	RSR	B-factors( $\text{\AA}^2$ )	Q<0.9
3	SO4	A	1316	5/5	0.94	0.16	54,55,56,59	0
2	NDP	A	1315	32/48	0.96	0.08	18,23,47,52	0
4	FAD	B	1316	53/53	0.97	0.07	16,20,26,27	0
4	FAD	A	1317	53/53	0.98	0.07	12,18,23,25	0

The following is a graphical depiction of the model fit to experimental electron density of all instances of the Ligand of Interest. In addition, ligands with molecular weight > 250 and outliers as shown on the geometry validation Tables will also be included. Each fit is shown from different orientation to approximate a three-dimensional view.

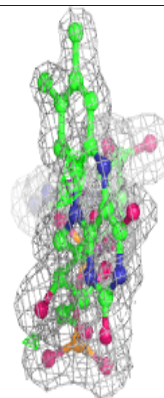
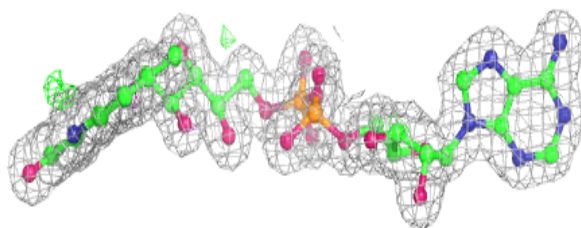
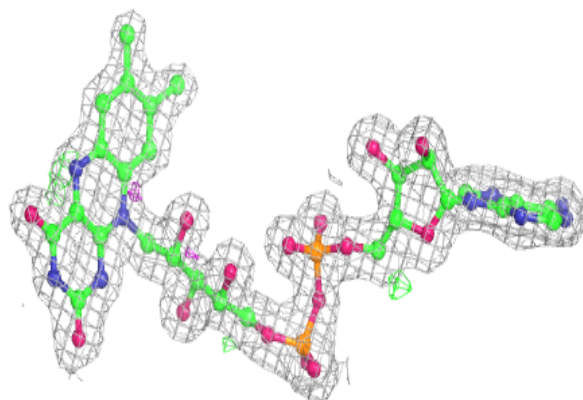


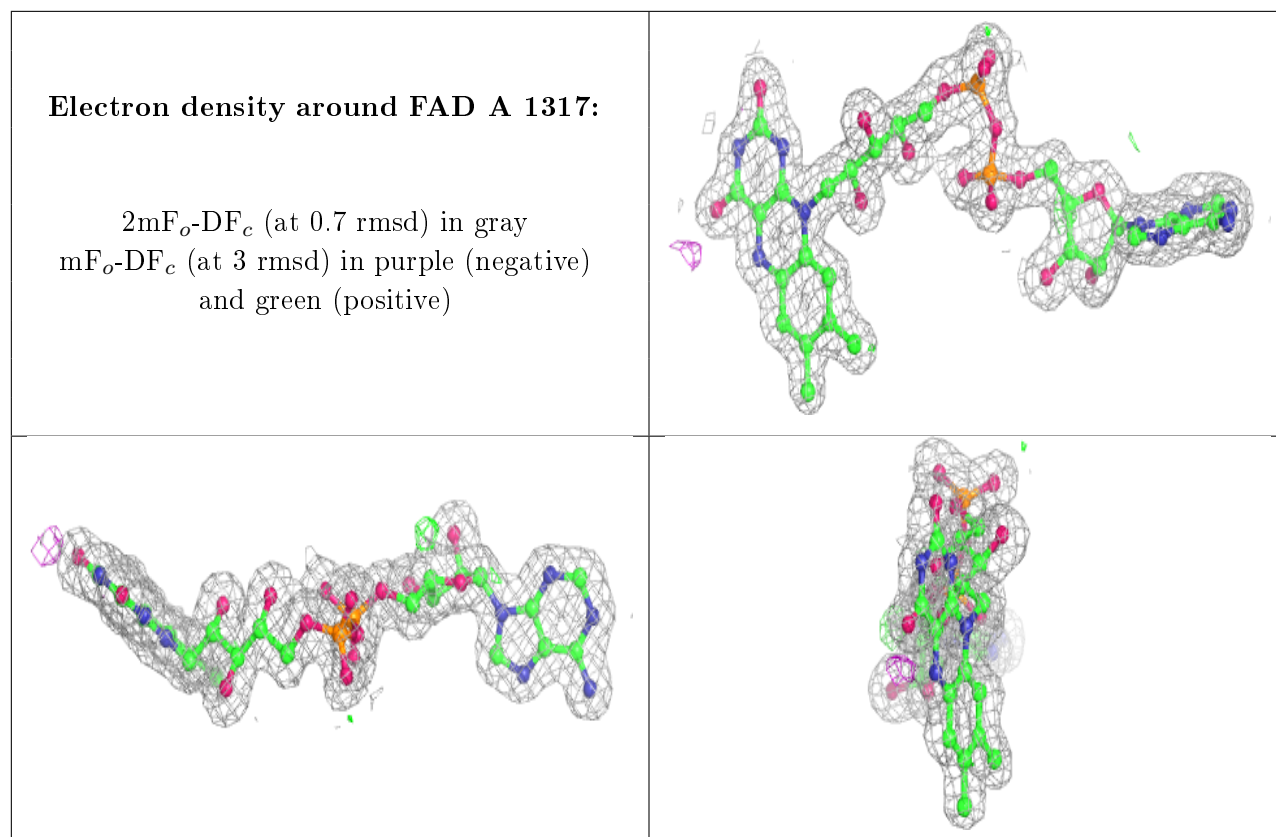
**Electron density around NDP A 1315:**

$2mF_o-DF_c$  (at 0.7 rmsd) in gray  
 $mF_o-DF_c$  (at 3 rmsd) in purple (negative)  
and green (positive)

**Electron density around FAD B 1316:**

$2mF_o-DF_c$  (at 0.7 rmsd) in gray  
 $mF_o-DF_c$  (at 3 rmsd) in purple (negative)  
and green (positive)





## 6.5 Other polymers [i](#)

There are no such residues in this entry.