



Full wwPDB X-ray Structure Validation Report ⓘ

Aug 9, 2020 – 06:08 AM BST

PDB ID : 5A6V
Title : Open and closed conformations and protonation states of Candida antarctica Lipase B: Xenon complex
Authors : Stauch, B.; Fisher, S.J.; Ciani, M.
Deposited on : 2015-07-01
Resolution : 2.28 Å(reported)

This is a Full wwPDB X-ray Structure Validation Report for a publicly released PDB entry.

We welcome your comments at validation@mail.wwpdb.org

A user guide is available at

<https://www.wwpdb.org/validation/2017/XrayValidationReportHelp>

with specific help available everywhere you see the ⓘ symbol.

The following versions of software and data (see [references ⓘ](#)) were used in the production of this report:

MolProbity : 4.02b-467
Mogul : 1.8.5 (274361), CSD as541be (2020)
Xtriage (Phenix) : 1.13
EDS : 2.13.1
Percentile statistics : 20191225.v01 (using entries in the PDB archive December 25th 2019)
Refmac : 5.8.0158
CCP4 : 7.0.044 (Gargrove)
Ideal geometry (proteins) : Engh & Huber (2001)
Ideal geometry (DNA, RNA) : Parkinson et al. (1996)
Validation Pipeline (wwPDB-VP) : 2.13.1

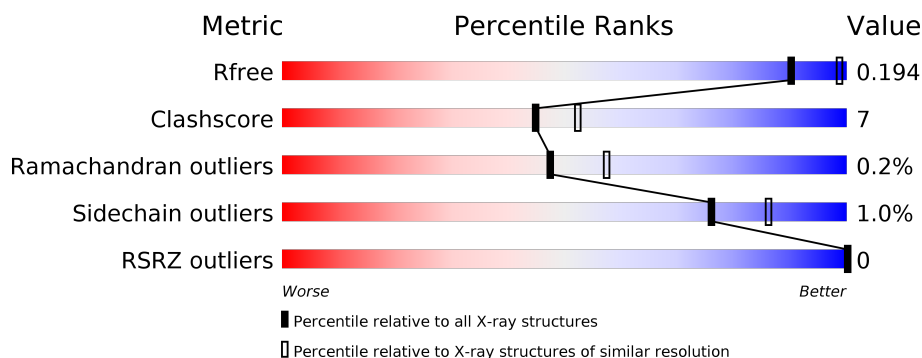
1 Overall quality at a glance

The following experimental techniques were used to determine the structure:

X-RAY DIFFRACTION

The reported resolution of this entry is 2.28 Å.

Percentile scores (ranging between 0-100) for global validation metrics of the entry are shown in the following graphic. The table shows the number of entries on which the scores are based.



Metric	Whole archive (#Entries)	Similar resolution (#Entries, resolution range(Å))
R_{free}	130704	6980 (2.30-2.26)
Clashscore	141614	7711 (2.30-2.26)
Ramachandran outliers	138981	7597 (2.30-2.26)
Sidechain outliers	138945	7598 (2.30-2.26)
RSRZ outliers	127900	6849 (2.30-2.26)

The table below summarises the geometric issues observed across the polymeric chains and their fit to the electron density. The red, orange, yellow and green segments on the lower bar indicate the fraction of residues that contain outliers for ≥ 3 , 2, 1 and 0 types of geometric quality criteria respectively. A grey segment represents the fraction of residues that are not modelled. The numeric value for each fraction is indicated below the corresponding segment, with a dot representing fractions $\leq 5\%$. The upper red bar (where present) indicates the fraction of residues that have poor fit to the electron density. The numeric value is given above the bar.

Mol	Chain	Length	Quality of chain
1	A	317	<div> <div style="width: 88%; background-color: green;"></div> <div style="width: 12%; background-color: yellow;"></div> </div> <div>88% 12%</div>
1	B	317	<div> <div style="width: 89%; background-color: green;"></div> <div style="width: 10%; background-color: yellow;"></div> </div> <div>89% 10%</div>
2	C	2	<div> <div style="width: 50%; background-color: green;"></div> <div style="width: 50%; background-color: yellow;"></div> </div> <div>50% 50%</div>
2	D	2	<div> <div style="width: 50%; background-color: green;"></div> <div style="width: 50%; background-color: orange;"></div> </div> <div>50% 50%</div>

The following table lists non-polymeric compounds, carbohydrate monomers and non-standard residues in protein, DNA, RNA chains that are outliers for geometric or electron-density-fit crite-

ria:

Mol	Type	Chain	Res	Chirality	Geometry	Clashes	Electron density
4	XE	A	1321	-	-	X	-
4	XE	A	1324	-	-	X	-
4	XE	B	1320	-	-	X	-

2 Entry composition [i](#)

There are 5 unique types of molecules in this entry. The entry contains 5193 atoms, of which 0 are hydrogens and 0 are deuteriums.

In the tables below, the ZeroOcc column contains the number of atoms modelled with zero occupancy, the AltConf column contains the number of residues with at least one atom in alternate conformation and the Trace column contains the number of residues modelled with at most 2 atoms.

- Molecule 1 is a protein called LIPASE B.

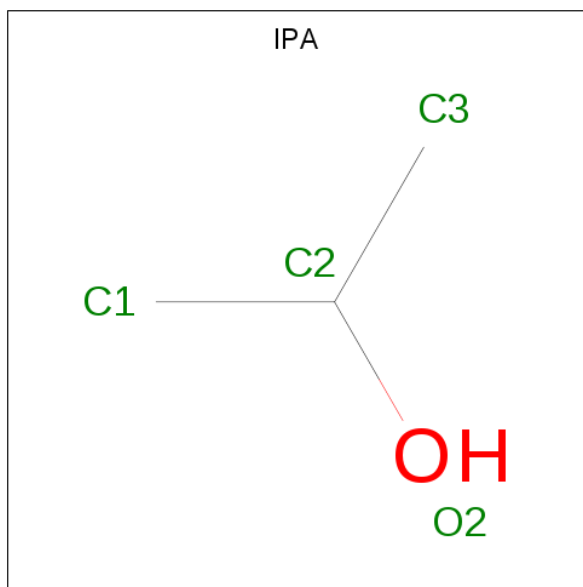
Mol	Chain	Residues	Atoms					ZeroOcc	AltConf	Trace
1	A	317	Total	C	N	O	S	0	0	0
			2323	1472	389	452	10			
1	B	316	Total	C	N	O	S	0	0	0
			2316	1467	388	451	10			

- Molecule 2 is an oligosaccharide called 2-acetamido-2-deoxy-beta-D-glucopyranose-(1-4)-2-acetamido-2-deoxy-beta-D-glucopyranose.



Mol	Chain	Residues	Atoms				ZeroOcc	AltConf	Trace
2	C	2	Total	C	N	O	0	0	0
			28	16	2	10			
2	D	2	Total	C	N	O	0	0	0
			28	16	2	10			

- Molecule 3 is ISOPROPYL ALCOHOL (three-letter code: IPA) (formula: C₃H₈O).



Mol	Chain	Residues	Atoms			ZeroOcc	AltConf
3	A	1	Total	C	O	0	0
			4	3	1		
3	B	1	Total	C	O	0	0
			4	3	1		

- Molecule 4 is XENON (three-letter code: XE) (formula: Xe).

Mol	Chain	Residues	Atoms		ZeroOcc	AltConf
4	B	2	Total	Xe	0	0
			2	2		
4	A	4	Total	Xe	0	0
			4	4		

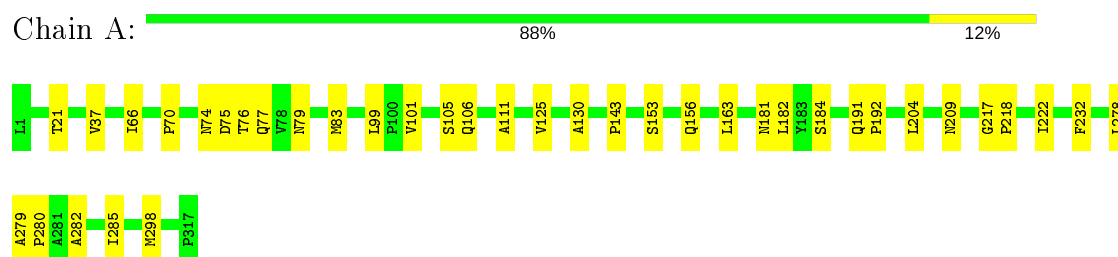
- Molecule 5 is water.

Mol	Chain	Residues	Atoms		ZeroOcc	AltConf
5	A	244	Total	O	0	0
			244	244		
5	B	240	Total	O	0	0
			240	240		

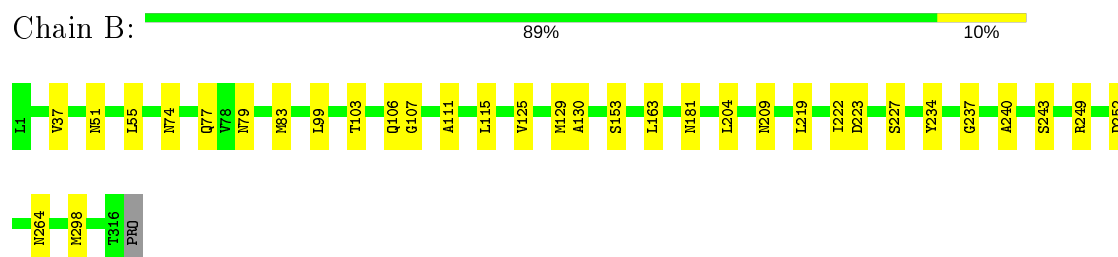
3 Residue-property plots

These plots are drawn for all protein, RNA, DNA and oligosaccharide chains in the entry. The first graphic for a chain summarises the proportions of the various outlier classes displayed in the second graphic. The second graphic shows the sequence view annotated by issues in geometry and electron density. Residues are color-coded according to the number of geometric quality criteria for which they contain at least one outlier: green = 0, yellow = 1, orange = 2 and red = 3 or more. A red dot above a residue indicates a poor fit to the electron density ($RSRZ > 2$). Stretches of 2 or more consecutive residues without any outlier are shown as a green connector. Residues present in the sample, but not in the model, are shown in grey.

- Molecule 1: LIPASE B



- Molecule 1: LIPASE B



- Molecule 2: 2-acetamido-2-deoxy-beta-D-glucopyranose-(1-4)-2-acetamido-2-deoxy-beta-D-glucopyranose



- Molecule 2: 2-acetamido-2-deoxy-beta-D-glucopyranose-(1-4)-2-acetamido-2-deoxy-beta-D-glucopyranose



4 Data and refinement statistics

Property	Value	Source
Space group	P 1	Depositor
Cell constants a, b, c, α , β , γ	39.66Å 48.89Å 71.68Å 87.80° 98.07° 108.17°	Depositor
Resolution (Å)	70.97 – 2.28 46.45 – 2.28	Depositor EDS
% Data completeness (in resolution range)	92.2 (70.97-2.28) 92.2 (46.45-2.28)	Depositor EDS
R_{merge}	0.06	Depositor
R_{sym}	(Not available)	Depositor
$\langle I/\sigma(I) \rangle$ ¹	1.69 (at 2.27Å)	Xtriage
Refinement program	REFMAC 5.8.0107	Depositor
R, R_{free}	0.139 , 0.195 0.140 , 0.194	Depositor DCC
R_{free} test set	1097 reflections (5.14%)	wwPDB-VP
Wilson B-factor (Å ²)	13.9	Xtriage
Anisotropy	0.010	Xtriage
Bulk solvent k_{sol} (e/Å ³), B_{sol} (Å ²)	0.34 , 40.7	EDS
L-test for twinning ²	$\langle L \rangle = 0.48$, $\langle L^2 \rangle = 0.31$	Xtriage
Estimated twinning fraction	No twinning to report.	Xtriage
F_o, F_c correlation	0.96	EDS
Total number of atoms	5193	wwPDB-VP
Average B, all atoms (Å ²)	14.0	wwPDB-VP

Xtriage's analysis on translational NCS is as follows: *The largest off-origin peak in the Patterson function is 7.49% of the height of the origin peak. No significant pseudotranslation is detected.*

¹Intensities estimated from amplitudes.

²Theoretical values of $\langle |L| \rangle$, $\langle L^2 \rangle$ for acentric reflections are 0.5, 0.333 respectively for untwinned datasets, and 0.375, 0.2 for perfectly twinned datasets.

5 Model quality

5.1 Standard geometry

Bond lengths and bond angles in the following residue types are not validated in this section: IPA, NAG, XE

The Z score for a bond length (or angle) is the number of standard deviations the observed value is removed from the expected value. A bond length (or angle) with $|Z| > 5$ is considered an outlier worth inspection. RMSZ is the root-mean-square of all Z scores of the bond lengths (or angles).

Mol	Chain	Bond lengths		Bond angles	
		RMSZ	# Z >5	RMSZ	# Z >5
1	A	0.69	0/2382	0.66	0/3272
1	B	0.72	0/2374	0.68	0/3260
All	All	0.70	0/4756	0.67	0/6532

There are no bond length outliers.

There are no bond angle outliers.

There are no chirality outliers.

There are no planarity outliers.

5.2 Too-close contacts

In the following table, the Non-H and H(model) columns list the number of non-hydrogen atoms and hydrogen atoms in the chain respectively. The H(added) column lists the number of hydrogen atoms added and optimized by MolProbity. The Clashes column lists the number of clashes within the asymmetric unit, whereas Symm-Clashes lists symmetry related clashes.

Mol	Chain	Non-H	H(model)	H(added)	Clashes	Symm-Clashes
1	A	2323	0	2299	31	0
1	B	2316	0	2292	29	0
2	C	28	0	25	0	0
2	D	28	0	25	1	0
3	A	4	0	8	1	0
3	B	4	0	8	0	0
4	A	4	0	0	9	0
4	B	2	0	0	3	0
5	A	244	0	0	2	0
5	B	240	0	0	3	0
All	All	5193	0	4657	61	0

The all-atom clashscore is defined as the number of clashes found per 1000 atoms (including hydrogen atoms). The all-atom clashscore for this structure is 7.

All (61) close contacts within the same asymmetric unit are listed below, sorted by their clash magnitude.

Atom-1	Atom-2	Interatomic distance (Å)	Clash overlap (Å)
4:A:1321:XE:XE	4:A:1323:XE:XE	3.17	1.19
4:A:1321:XE:XE	1:B:219:LEU:HD23	2.37	1.01
1:B:77:GLN:HE22	1:B:298:MET:H	1.14	0.93
1:A:77:GLN:HE22	1:A:298:MET:H	1.22	0.87
1:A:76:THR:H	1:A:156:GLN:HE22	1.34	0.73
1:A:77:GLN:NE2	1:A:298:MET:H	1.91	0.68
1:B:252:ASP:OD2	5:B:2174:HOH:O	2.12	0.67
1:B:79:ASN:HD22	1:B:106:GLN:HE22	1.43	0.65
1:B:77:GLN:NE2	1:B:298:MET:H	1.90	0.65
1:A:282:ALA:HA	1:B:219:LEU:HD22	1.79	0.64
1:A:278:LEU:HD22	4:A:1321:XE:XE	2.77	0.63
1:A:111:ALA:HB1	4:A:1324:XE:XE	2.78	0.62
4:A:1321:XE:XE	1:B:219:LEU:CD2	3.23	0.60
1:A:76:THR:H	1:A:156:GLN:NE2	2.00	0.59
1:A:79:ASN:HD22	1:A:106:GLN:HE22	1.50	0.59
1:B:204:LEU:H	1:B:209:ASN:HD21	1.50	0.58
1:A:105:SER:OG	1:A:106:GLN:N	2.34	0.58
1:B:129:MET:CE	1:B:237:GLY:HA2	2.33	0.57
1:A:204:LEU:H	1:A:209:ASN:HD21	1.51	0.57
1:A:191:GLN:HE21	1:A:192:PRO:HA	1.68	0.57
1:A:143:PRO:HG3	1:B:223:ASP:HB3	1.88	0.55
1:B:77:GLN:HE22	1:B:298:MET:N	1.95	0.55
1:A:191:GLN:NE2	1:A:192:PRO:HA	2.22	0.55
1:B:129:MET:HE2	1:B:240:ALA:HB3	1.89	0.54
1:A:101:VAL:HG21	4:A:1324:XE:XE	2.85	0.54
1:A:285:ILE:HD13	4:A:1322:XE:XE	2.86	0.52
1:A:75:ASP:HA	1:A:156:GLN:HE22	1.74	0.52
1:A:37:VAL:HG13	1:A:66:ILE:HD11	1.92	0.51
1:A:77:GLN:HE22	1:A:298:MET:N	2.00	0.50
1:B:129:MET:HE2	1:B:237:GLY:HA2	1.92	0.50
1:A:153:SER:HA	1:A:156:GLN:HE21	1.76	0.50
1:A:83:MET:SD	1:A:111:ALA:HA	2.52	0.49
1:A:184:SER:HB2	1:A:222:ILE:HG23	1.94	0.49
1:B:111:ALA:HB1	4:B:1320:XE:XE	2.90	0.49
1:A:125:VAL:HG21	4:A:1324:XE:XE	2.91	0.49
5:B:2235:HOH:O	2:D:2:NAG:O4	2.15	0.49
1:B:115:LEU:HG	4:B:1320:XE:XE	2.91	0.49

Continued on next page...

Continued from previous page...

Atom-1	Atom-2	Interatomic distance (Å)	Clash overlap (Å)
3:A:1320:IPA:H32	5:A:2101:HOH:O	2.13	0.48
1:A:70:PRO:HD2	1:A:74:ASN:HB2	1.97	0.47
1:B:83:MET:SD	1:B:111:ALA:HA	2.54	0.46
1:B:129:MET:HE1	1:B:240:ALA:HB2	1.98	0.46
1:A:182:LEU:HD11	1:A:232:PHE:HE2	1.81	0.45
1:B:222:ILE:HD12	1:B:227:SER:HA	1.99	0.45
1:B:264:ASN:ND2	5:B:2187:HOH:O	2.50	0.44
1:B:125:VAL:HG21	4:B:1320:XE:XE	2.96	0.44
1:B:129:MET:HE1	1:B:240:ALA:CB	2.48	0.43
1:B:243:SER:OG	1:B:249:ARG:HD3	2.18	0.43
1:B:37:VAL:HG12	1:B:107:GLY:HA2	2.01	0.43
1:A:278:LEU:HD13	4:A:1321:XE:XE	2.97	0.42
1:B:37:VAL:HB	1:B:103:THR:HG22	2.00	0.42
1:A:79:ASN:HD22	1:A:106:GLN:NE2	2.15	0.42
1:B:129:MET:CE	1:B:240:ALA:CB	2.97	0.42
1:A:74:ASN:HB3	5:A:2076:HOH:O	2.20	0.42
1:B:129:MET:HE3	1:B:237:GLY:HA2	2.01	0.42
1:A:130:ALA:HB3	1:A:181:ASN:HD22	1.85	0.41
1:B:74:ASN:O	1:B:153:SER:HB3	2.20	0.41
1:A:79:ASN:ND2	1:A:106:GLN:HE22	2.18	0.40
1:A:217:GLY:HA2	1:A:218:PRO:HD3	1.93	0.40
1:A:279:ALA:HB3	1:A:280:PRO:HD3	2.02	0.40
1:B:55:LEU:HD13	1:B:234:TYR:CD1	2.56	0.40
1:B:130:ALA:HB3	1:B:181:ASN:HD22	1.87	0.40

There are no symmetry-related clashes.

5.3 Torsion angles [i](#)

5.3.1 Protein backbone [i](#)

In the following table, the Percentiles column shows the percent Ramachandran outliers of the chain as a percentile score with respect to all X-ray entries followed by that with respect to entries of similar resolution.

The Analysed column shows the number of residues for which the backbone conformation was analysed, and the total number of residues.

Mol	Chain	Analysed	Favoured	Allowed	Outliers	Percentiles
1	A	315/317 (99%)	305 (97%)	10 (3%)	0	100 100

Continued on next page...

Continued from previous page...

Mol	Chain	Analysed	Favoured	Allowed	Outliers	Percentiles	
1	B	314/317 (99%)	300 (96%)	13 (4%)	1 (0%)	41	49
All	All	629/634 (99%)	605 (96%)	23 (4%)	1 (0%)	47	57

All (1) Ramachandran outliers are listed below:

Mol	Chain	Res	Type
1	B	51	ASN

5.3.2 Protein sidechains ⓘ

In the following table, the Percentiles column shows the percent sidechain outliers of the chain as a percentile score with respect to all X-ray entries followed by that with respect to entries of similar resolution.

The Analysed column shows the number of residues for which the sidechain conformation was analysed, and the total number of residues.

Mol	Chain	Analysed	Rotameric	Outliers	Percentiles	
1	A	255/255 (100%)	252 (99%)	3 (1%)	71	82
1	B	254/255 (100%)	252 (99%)	2 (1%)	81	90
All	All	509/510 (100%)	504 (99%)	5 (1%)	76	86

All (5) residues with a non-rotameric sidechain are listed below:

Mol	Chain	Res	Type
1	A	21	THR
1	A	99	LEU
1	A	163	LEU
1	B	99	LEU
1	B	163	LEU

Some sidechains can be flipped to improve hydrogen bonding and reduce clashes. All (15) such sidechains are listed below:

Mol	Chain	Res	Type
1	A	77	GLN
1	A	106	GLN
1	A	156	GLN
1	A	157	GLN
1	A	181	ASN

Continued on next page...

Continued from previous page...

Mol	Chain	Res	Type
1	A	191	GLN
1	A	209	ASN
1	A	211	GLN
1	A	264	ASN
1	B	77	GLN
1	B	106	GLN
1	B	157	GLN
1	B	181	ASN
1	B	209	ASN
1	B	264	ASN

5.3.3 RNA ⓘ

There are no RNA molecules in this entry.

5.4 Non-standard residues in protein, DNA, RNA chains ⓘ

There are no non-standard protein/DNA/RNA residues in this entry.

5.5 Carbohydrates ⓘ

4 monosaccharides are modelled in this entry.

In the following table, the Counts columns list the number of bonds (or angles) for which Mogul statistics could be retrieved, the number of bonds (or angles) that are observed in the model and the number of bonds (or angles) that are defined in the Chemical Component Dictionary. The Link column lists molecule types, if any, to which the group is linked. The Z score for a bond length (or angle) is the number of standard deviations the observed value is removed from the expected value. A bond length (or angle) with $|Z| > 2$ is considered an outlier worth inspection. RMSZ is the root-mean-square of all Z scores of the bond lengths (or angles).

Mol	Type	Chain	Res	Link	Bond lengths			Bond angles		
					Counts	RMSZ	$\# Z > 2$	Counts	RMSZ	$\# Z > 2$
2	NAG	C	1	1,2	14,14,15	0.60	0	17,19,21	0.88	0
2	NAG	C	2	2	14,14,15	0.48	0	17,19,21	1.25	1 (5%)
2	NAG	D	1	1,2	14,14,15	0.42	0	17,19,21	0.96	0
2	NAG	D	2	2	14,14,15	0.53	0	17,19,21	1.03	1 (5%)

In the following table, the Chirals column lists the number of chiral outliers, the number of chiral centers analysed, the number of these observed in the model and the number defined in the Chemical Component Dictionary. Similar counts are reported in the Torsion and Rings columns.

'-' means no outliers of that kind were identified.

Mol	Type	Chain	Res	Link	Chirals	Torsions	Rings
2	NAG	C	1	1,2	-	0/6/23/26	0/1/1/1
2	NAG	C	2	2	-	2/6/23/26	0/1/1/1
2	NAG	D	1	1,2	-	0/6/23/26	0/1/1/1
2	NAG	D	2	2	-	0/6/23/26	0/1/1/1

There are no bond length outliers.

All (2) bond angle outliers are listed below:

Mol	Chain	Res	Type	Atoms	Z	Observed(°)	Ideal(°)
2	C	2	NAG	C1-O5-C5	4.05	117.68	112.19
2	D	2	NAG	C1-O5-C5	2.25	115.24	112.19

There are no chirality outliers.

All (2) torsion outliers are listed below:

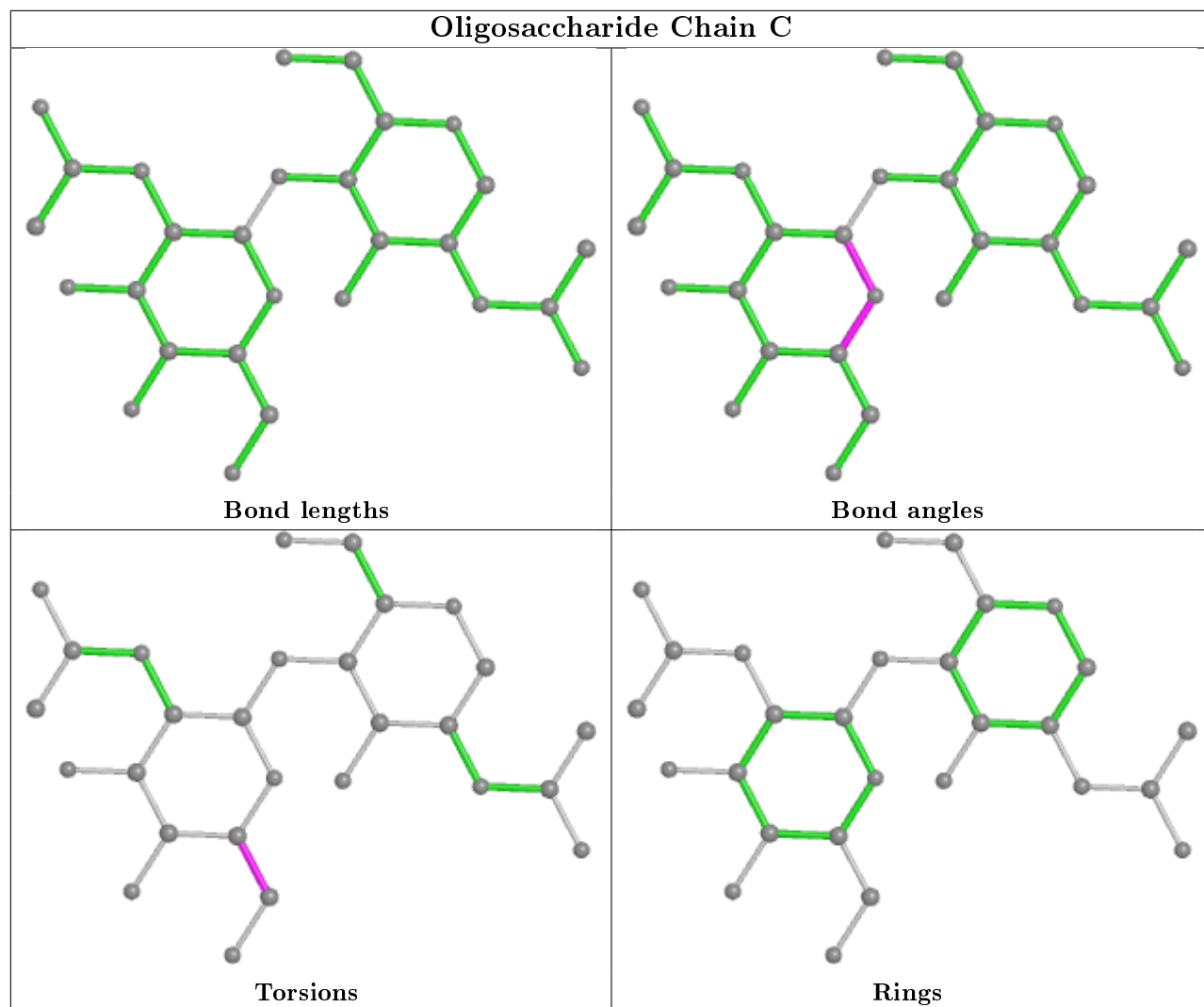
Mol	Chain	Res	Type	Atoms
2	C	2	NAG	O5-C5-C6-O6
2	C	2	NAG	C4-C5-C6-O6

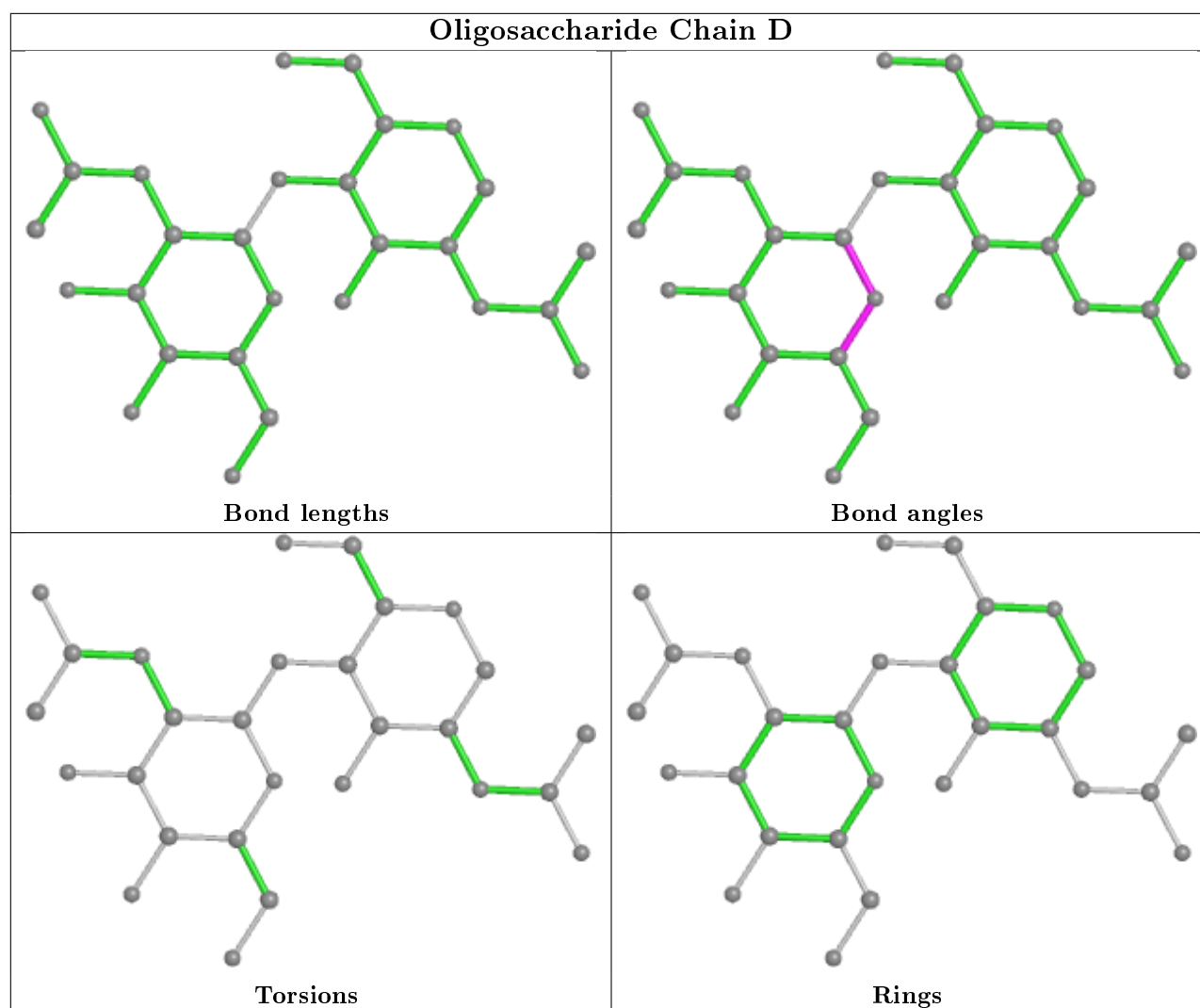
There are no ring outliers.

1 monomer is involved in 1 short contact:

Mol	Chain	Res	Type	Clashes	Symm-Clashes
2	D	2	NAG	1	0

The following is a two-dimensional graphical depiction of Mogul quality analysis of bond lengths, bond angles, torsion angles, and ring geometry for oligosaccharide.





5.6 Ligand geometry [i](#)

Of 8 ligands modelled in this entry, 6 are monoatomic - leaving 2 for Mogul analysis.

In the following table, the Counts columns list the number of bonds (or angles) for which Mogul statistics could be retrieved, the number of bonds (or angles) that are observed in the model and the number of bonds (or angles) that are defined in the Chemical Component Dictionary. The Link column lists molecule types, if any, to which the group is linked. The Z score for a bond length (or angle) is the number of standard deviations the observed value is removed from the expected value. A bond length (or angle) with $|Z| > 2$ is considered an outlier worth inspection. RMSZ is the root-mean-square of all Z scores of the bond lengths (or angles).

Mol	Type	Chain	Res	Link	Bond lengths			Bond angles		
					Counts	RMSZ	$\# Z > 2$	Counts	RMSZ	$\# Z > 2$
3	IPA	A	1320	-	3,3,3	0.53	0	3,3,3	0.31	0
3	IPA	B	1319	-	3,3,3	0.78	0	3,3,3	0.17	0

There are no bond length outliers.

There are no bond angle outliers.

There are no chirality outliers.

There are no torsion outliers.

There are no ring outliers.

1 monomer is involved in 1 short contact:

Mol	Chain	Res	Type	Clashes	Symm-Clashes
3	A	1320	IPA	1	0

5.7 Other polymers [i](#)

There are no such residues in this entry.

5.8 Polymer linkage issues [i](#)

There are no chain breaks in this entry.

6 Fit of model and data [i](#)

6.1 Protein, DNA and RNA chains [i](#)

In the following table, the column labelled ‘#RSRZ> 2’ contains the number (and percentage) of RSRZ outliers, followed by percent RSRZ outliers for the chain as percentile scores relative to all X-ray entries and entries of similar resolution. The OWAB column contains the minimum, median, 95th percentile and maximum values of the occupancy-weighted average B-factor per residue. The column labelled ‘Q< 0.9’ lists the number of (and percentage) of residues with an average occupancy less than 0.9.

Mol	Chain	Analysed	<RSRZ>	#RSRZ>2	OWAB(Å ²)	Q<0.9
1	A	317/317 (100%)	-0.79	0 100 100	7, 12, 18, 34	0
1	B	316/317 (99%)	-0.69	0 100 100	8, 13, 24, 36	0
All	All	633/634 (99%)	-0.74	0 100 100	7, 12, 21, 36	0

There are no RSRZ outliers to report.

6.2 Non-standard residues in protein, DNA, RNA chains [i](#)

There are no non-standard protein/DNA/RNA residues in this entry.

6.3 Carbohydrates [i](#)

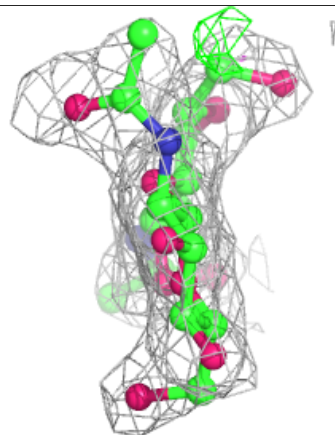
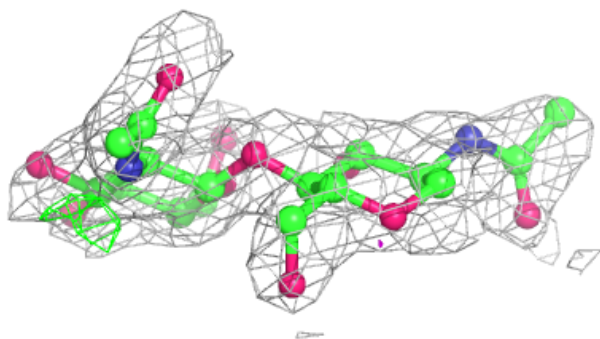
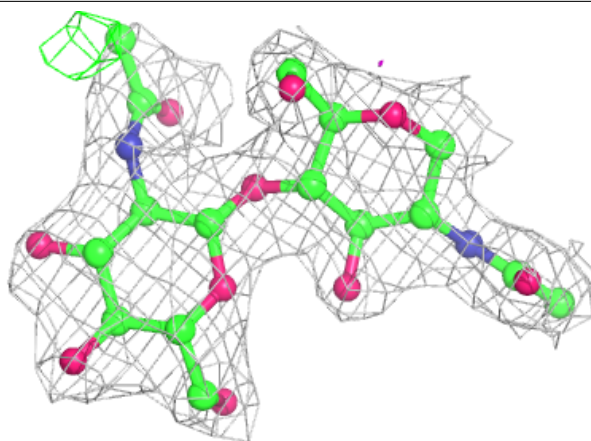
In the following table, the Atoms column lists the number of modelled atoms in the group and the number defined in the chemical component dictionary. The B-factors column lists the minimum, median, 95th percentile and maximum values of B factors of atoms in the group. The column labelled ‘Q< 0.9’ lists the number of atoms with occupancy less than 0.9.

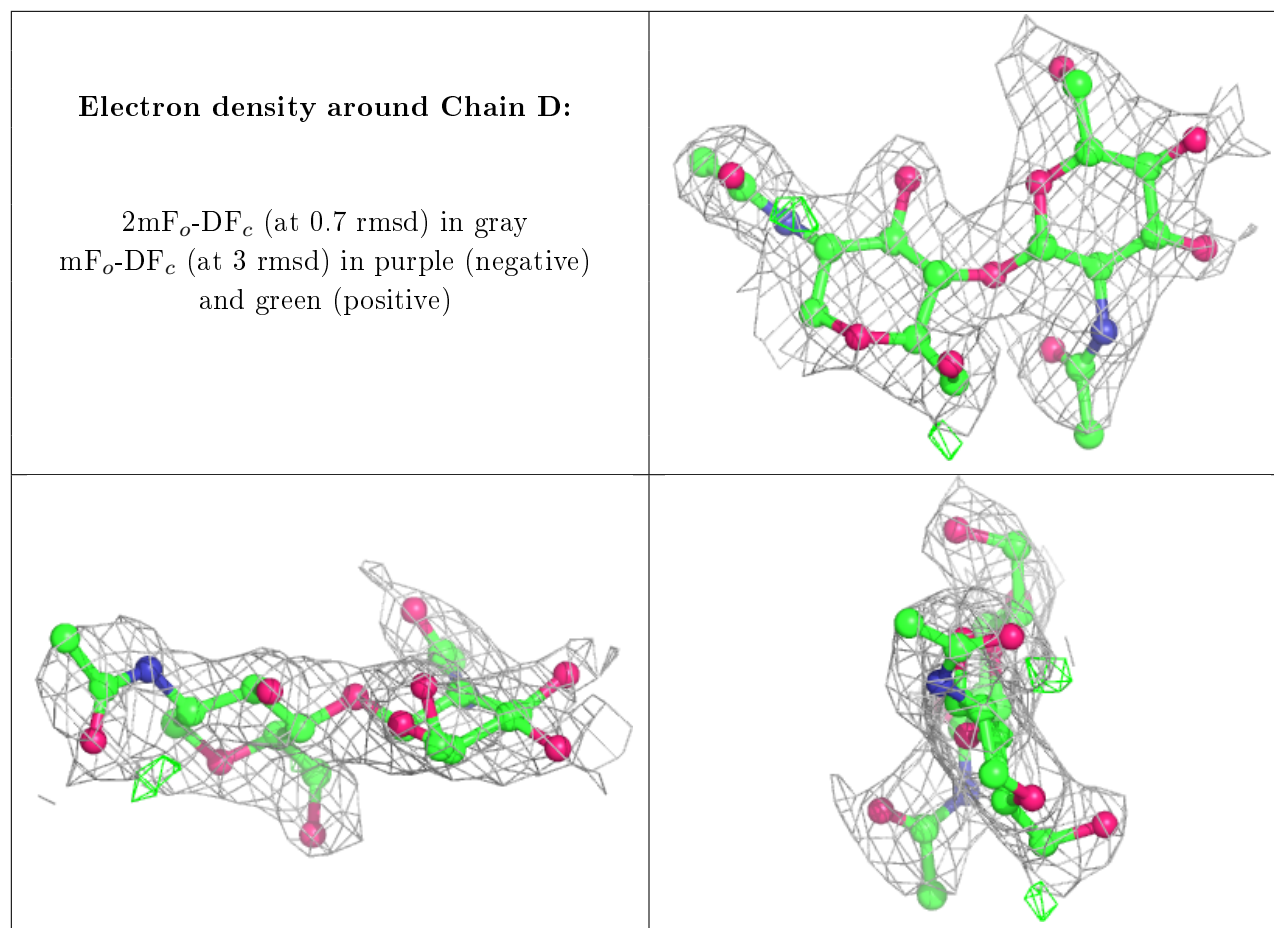
Mol	Type	Chain	Res	Atoms	RSCC	RSR	B-factors(Å ²)	Q<0.9
2	NAG	C	2	14/15	0.93	0.13	28,31,38,40	0
2	NAG	D	2	14/15	0.93	0.13	31,36,40,45	0
2	NAG	D	1	14/15	0.95	0.11	20,25,29,29	0
2	NAG	C	1	14/15	0.96	0.12	20,22,26,26	0

The following is a graphical depiction of the model fit to experimental electron density for oligosaccharide. Each fit is shown from different orientation to approximate a three-dimensional view.

Electron density around Chain C:

$2mF_o - DF_c$ (at 0.7 rmsd) in gray
 $mF_o - DF_c$ (at 3 rmsd) in purple (negative)
and green (positive)





6.4 Ligands ⓘ

In the following table, the Atoms column lists the number of modelled atoms in the group and the number defined in the chemical component dictionary. The B-factors column lists the minimum, median, 95th percentile and maximum values of B factors of atoms in the group. The column labelled 'Q< 0.9' lists the number of atoms with occupancy less than 0.9.

Mol	Type	Chain	Res	Atoms	RSCC	RSR	B-factors(Å ²)	Q<0.9
4	XE	A	1322	1/1	0.88	0.25	33,33,33,33	1
3	IPA	B	1319	4/4	0.88	0.17	21,25,26,27	0
4	XE	A	1321	1/1	0.93	0.17	30,30,30,30	1
4	XE	B	1321	1/1	0.95	0.14	21,21,21,21	1
4	XE	A	1323	1/1	0.96	0.15	38,38,38,38	1
3	IPA	A	1320	4/4	0.97	0.10	16,17,17,18	0
4	XE	B	1320	1/1	0.98	0.26	33,33,33,33	1
4	XE	A	1324	1/1	0.98	0.38	26,26,26,26	1

6.5 Other polymers

There are no such residues in this entry.