



Full wwPDB X-ray Structure Validation Report ⓘ

Aug 8, 2020 – 12:57 PM BST

PDB ID : 4A7Z
Title : Complex of bifunctional aldose-2-ulose dehydratase with the reaction intermediate ascopyrone M
Authors : Claesson, M.; Lindqvist, Y.; Madrid, S.; Sandalova, T.; Fiskesund, R.; Yu, S.; Schneider, G.
Deposited on : 2011-11-15
Resolution : 2.60 Å(reported)

This is a Full wwPDB X-ray Structure Validation Report for a publicly released PDB entry.

We welcome your comments at validation@mail.wwpdb.org

A user guide is available at

<https://www.wwpdb.org/validation/2017/XrayValidationReportHelp>

with specific help available everywhere you see the ⓘ symbol.

The following versions of software and data (see [references ⓘ](#)) were used in the production of this report:

MolProbity : 4.02b-467
Mogul : 1.8.5 (274361), CSD as541be (2020)
Xtriage (Phenix) : 1.13
EDS : 2.13.1
Percentile statistics : 20191225.v01 (using entries in the PDB archive December 25th 2019)
Refmac : 5.8.0158
CCP4 : 7.0.044 (Gargrove)
Ideal geometry (proteins) : Engh & Huber (2001)
Ideal geometry (DNA, RNA) : Parkinson et al. (1996)
Validation Pipeline (wwPDB-VP) : 2.13.1

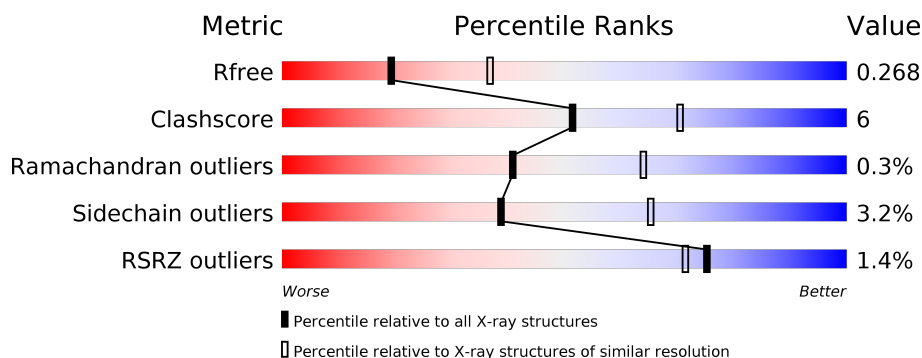
1 Overall quality at a glance

The following experimental techniques were used to determine the structure:

X-RAY DIFFRACTION

The reported resolution of this entry is 2.60 Å.

Percentile scores (ranging between 0-100) for global validation metrics of the entry are shown in the following graphic. The table shows the number of entries on which the scores are based.



Metric	Whole archive (#Entries)	Similar resolution (#Entries, resolution range(Å))
R_{free}	130704	3163 (2.60-2.60)
Clashscore	141614	3518 (2.60-2.60)
Ramachandran outliers	138981	3455 (2.60-2.60)
Sidechain outliers	138945	3455 (2.60-2.60)
RSRZ outliers	127900	3104 (2.60-2.60)

The table below summarises the geometric issues observed across the polymeric chains and their fit to the electron density. The red, orange, yellow and green segments on the lower bar indicate the fraction of residues that contain outliers for ≥ 3 , 2, 1 and 0 types of geometric quality criteria respectively. A grey segment represents the fraction of residues that are not modelled. The numeric value for each fraction is indicated below the corresponding segment, with a dot representing fractions $\leq 5\%$. The upper red bar (where present) indicates the fraction of residues that have poor fit to the electron density. The numeric value is given above the bar.

Mol	Chain	Length	Quality of chain
1	A	900	<div> <div></div> <div>82%</div> <div>14%</div> <div>..</div> </div>

2 Entry composition

There are 5 unique types of molecules in this entry. The entry contains 7021 atoms, of which 0 are hydrogens and 0 are deuteriums.

In the tables below, the ZeroOcc column contains the number of atoms modelled with zero occupancy, the AltConf column contains the number of residues with at least one atom in alternate conformation and the Trace column contains the number of residues modelled with at most 2 atoms.

- Molecule 1 is a protein called ALDOS-2-ULOSE DEHYDRATASE.

Mol	Chain	Residues	Atoms					ZeroOcc	AltConf	Trace
1	A	881	Total	C	N	O	S	0	1	0
			6808	4319	1186	1271	32			

There are 3 discrepancies between the modelled and reference sequences:

Chain	Residue	Modelled	Actual	Comment	Reference
A	?	-	THR	deletion	UNP P84193
A	?	-	GLY	deletion	UNP P84193
A	?	-	HIS	deletion	UNP P84193

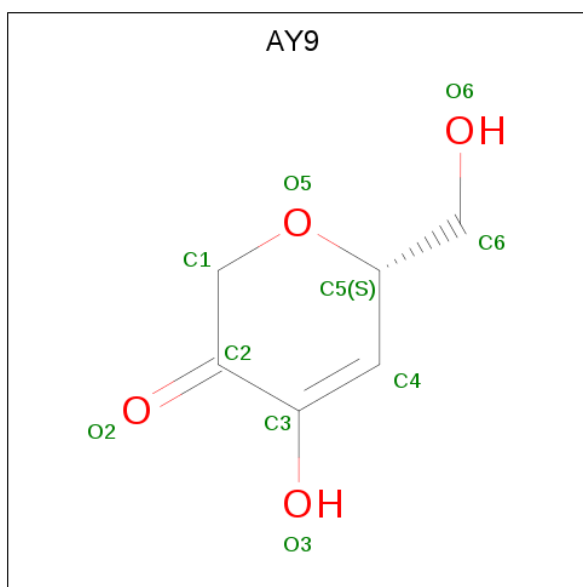
- Molecule 2 is ZINC ION (three-letter code: ZN) (formula: Zn).

Mol	Chain	Residues	Atoms		ZeroOcc	AltConf
2	A	3	Total	Zn	0	0
			3	3		

- Molecule 3 is MAGNESIUM ION (three-letter code: MG) (formula: Mg).

Mol	Chain	Residues	Atoms		ZeroOcc	AltConf
3	A	1	Total	Mg	0	0
			1	1		

- Molecule 4 is Ascopyrone M (three-letter code: AY9) (formula: C₆H₈O₄).



Mol	Chain	Residues	Atoms			ZeroOcc	AltConf
4	A	1	Total	C	O	0	0
			10	6	4		
4	A	1	Total	C	O	0	0
			10	6	4		

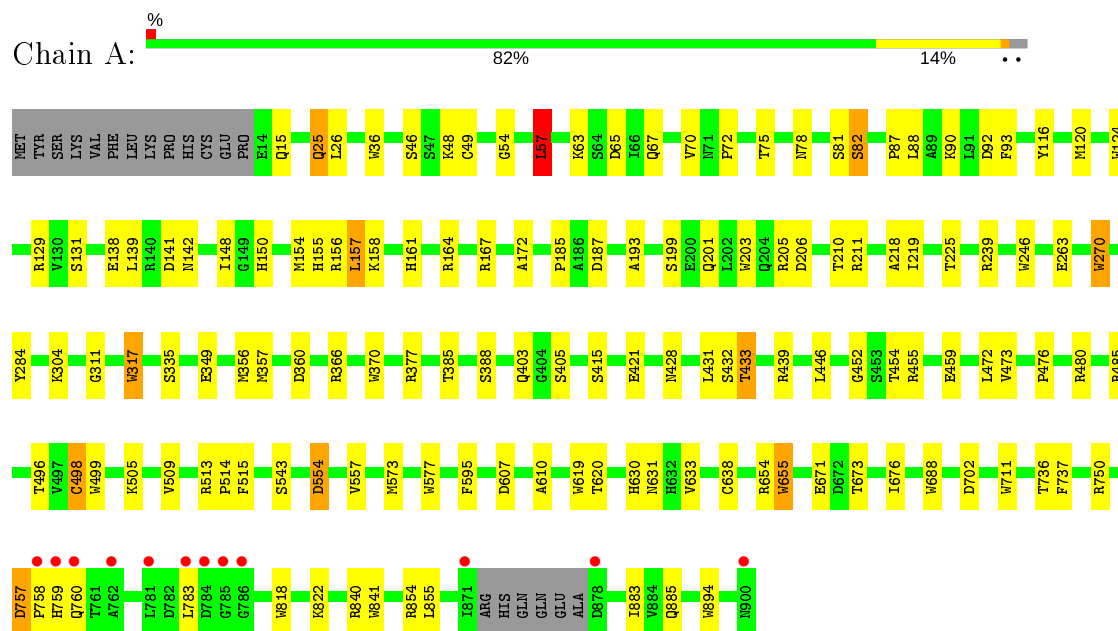
- Molecule 5 is water.

Mol	Chain	Residues	Atoms		ZeroOcc	AltConf
5	A	189	Total	O	0	0
			189	189		

3 Residue-property plots [i](#)

These plots are drawn for all protein, RNA, DNA and oligosaccharide chains in the entry. The first graphic for a chain summarises the proportions of the various outlier classes displayed in the second graphic. The second graphic shows the sequence view annotated by issues in geometry and electron density. Residues are color-coded according to the number of geometric quality criteria for which they contain at least one outlier: green = 0, yellow = 1, orange = 2 and red = 3 or more. A red dot above a residue indicates a poor fit to the electron density ($RSRZ > 2$). Stretches of 2 or more consecutive residues without any outlier are shown as a green connector. Residues present in the sample, but not in the model, are shown in grey.

• Molecule 1: ALDOS-2-ULOSE DEHYDRATASE



4 Data and refinement statistics

Property	Value	Source
Space group	P 21 21 2	Depositor
Cell constants a, b, c, α , β , γ	132.22Å 82.67Å 97.91Å 90.00° 90.00° 90.00°	Depositor
Resolution (Å)	41.33 – 2.60 40.19 – 2.60	Depositor EDS
% Data completeness (in resolution range)	97.9 (41.33-2.60) 98.0 (40.19-2.60)	Depositor EDS
R_{merge}	0.12	Depositor
R_{sym}	(Not available)	Depositor
$\langle I/\sigma(I) \rangle$ ¹	2.11 (at 2.61Å)	Xtriage
Refinement program	REFMAC 5.6.0116	Depositor
R, R_{free}	0.194 , 0.267 0.194 , 0.268	Depositor DCC
R_{free} test set	1674 reflections (5.07%)	wwPDB-VP
Wilson B-factor (Å ²)	33.7	Xtriage
Anisotropy	0.407	Xtriage
Bulk solvent k_{sol} (e/Å ³), B_{sol} (Å ²)	0.30 , 34.5	EDS
L-test for twinning ²	$\langle L \rangle = 0.50$, $\langle L^2 \rangle = 0.34$	Xtriage
Estimated twinning fraction	No twinning to report.	Xtriage
F_o, F_c correlation	0.93	EDS
Total number of atoms	7021	wwPDB-VP
Average B, all atoms (Å ²)	35.0	wwPDB-VP

Xtriage's analysis on translational NCS is as follows: *The largest off-origin peak in the Patterson function is 3.68% of the height of the origin peak. No significant pseudotranslation is detected.*

¹Intensities estimated from amplitudes.

²Theoretical values of $\langle |L| \rangle$, $\langle L^2 \rangle$ for acentric reflections are 0.5, 0.333 respectively for untwinned datasets, and 0.375, 0.2 for perfectly twinned datasets.

5 Model quality [i](#)

5.1 Standard geometry [i](#)

Bond lengths and bond angles in the following residue types are not validated in this section: ZN, AY9, MG

The Z score for a bond length (or angle) is the number of standard deviations the observed value is removed from the expected value. A bond length (or angle) with $|Z| > 5$ is considered an outlier worth inspection. RMSZ is the root-mean-square of all Z scores of the bond lengths (or angles).

Mol	Chain	Bond lengths		Bond angles	
		RMSZ	$\# Z > 5$	RMSZ	$\# Z > 5$
1	A	0.81	12/7010 (0.2%)	0.84	9/9577 (0.1%)

All (12) bond length outliers are listed below:

Mol	Chain	Res	Type	Atoms	Z	Observed(Å)	Ideal(Å)
1	A	246	TRP	CD2-CE2	6.36	1.49	1.41
1	A	124	TRP	CD2-CE2	6.19	1.48	1.41
1	A	370	TRP	CD2-CE2	6.12	1.48	1.41
1	A	841	TRP	CD2-CE2	6.04	1.48	1.41
1	A	619	TRP	CD2-CE2	6.03	1.48	1.41
1	A	894	TRP	CD2-CE2	5.99	1.48	1.41
1	A	270	TRP	CD2-CE2	5.86	1.48	1.41
1	A	499	TRP	CD2-CE2	5.82	1.48	1.41
1	A	655	TRP	CD2-CE2	5.71	1.48	1.41
1	A	711	TRP	CD2-CE2	5.61	1.48	1.41
1	A	818	TRP	CD2-CE2	5.25	1.47	1.41
1	A	317	TRP	CD2-CE2	5.03	1.47	1.41

All (9) bond angle outliers are listed below:

Mol	Chain	Res	Type	Atoms	Z	Observed(°)	Ideal(°)
1	A	187	ASP	CB-CG-OD1	6.45	124.11	118.30
1	A	607	ASP	CB-CG-OD1	6.42	124.08	118.30
1	A	480	ARG	NE-CZ-NH1	-6.27	117.16	120.30
1	A	211	ARG	NE-CZ-NH1	5.86	123.23	120.30
1	A	840	ARG	NE-CZ-NH2	-5.79	117.40	120.30
1	A	57	LEU	CA-CB-CG	5.71	128.44	115.30
1	A	187	ASP	CB-CG-OD2	-5.53	113.33	118.30
1	A	205	ARG	NE-CZ-NH2	-5.23	117.69	120.30
1	A	702	ASP	CB-CG-OD2	5.14	122.92	118.30

There are no chirality outliers.

There are no planarity outliers.

5.2 Too-close contacts

In the following table, the Non-H and H(model) columns list the number of non-hydrogen atoms and hydrogen atoms in the chain respectively. The H(added) column lists the number of hydrogen atoms added and optimized by MolProbity. The Clashes column lists the number of clashes within the asymmetric unit, whereas Symm-Clashes lists symmetry related clashes.

Mol	Chain	Non-H	H(model)	H(added)	Clashes	Symm-Clashes
1	A	6808	0	6539	75	0
2	A	3	0	0	0	0
3	A	1	0	0	0	0
4	A	20	0	14	4	0
5	A	189	0	0	5	0
All	All	7021	0	6553	75	0

The all-atom clashscore is defined as the number of clashes found per 1000 atoms (including hydrogen atoms). The all-atom clashscore for this structure is 6.

All (75) close contacts within the same asymmetric unit are listed below, sorted by their clash magnitude.

Atom-1	Atom-2	Interatomic distance (Å)	Clash overlap (Å)
1:A:335:SER:HA	1:A:357:MET:HE3	1.54	0.86
1:A:139:LEU:HD21	5:A:2017:HOH:O	1.80	0.80
1:A:403:GLN:NE2	5:A:2016:HOH:O	2.10	0.75
1:A:26:LEU:HD12	1:A:428:ASN:HD21	1.57	0.69
1:A:496:THR:HG22	1:A:509:VAL:HG12	1.76	0.67
1:A:15:GLN:O	1:A:455:ARG:NH2	2.28	0.66
1:A:167:ARG:HD3	1:A:193:ALA:O	1.97	0.65
1:A:46:SER:OG	1:A:48:LYS:HG2	1.98	0.64
1:A:63:LYS:HE3	1:A:92:ASP:OD1	1.98	0.63
1:A:185:PRO:HB2	1:A:210:THR:HG22	1.82	0.62
1:A:757:ASP:C	1:A:759:HIS:H	2.03	0.61
1:A:116:TYR:HE2	4:A:954:AY9:H61C	1.67	0.60
1:A:25:GLN:NE2	1:A:81:SER:HB2	2.16	0.60
1:A:185:PRO:HB2	1:A:210:THR:CG2	2.32	0.59
1:A:116:TYR:CE2	4:A:954:AY9:H61C	2.38	0.59
1:A:356:MET:HB3	1:A:366:ARG:O	2.02	0.59
1:A:167:ARG:HG2	1:A:193:ALA:HB3	1.86	0.58
1:A:70:VAL:O	1:A:72:PRO:HD3	2.03	0.57

Continued on next page...

Continued from previous page...

Atom-1	Atom-2	Interatomic distance (Å)	Clash overlap (Å)
1:A:439:ARG:HG3	1:A:573:MET:SD	2.44	0.57
1:A:72:PRO:HG3	1:A:82:SER:O	2.09	0.53
1:A:263:GLU:HB2	1:A:270:TRP:CD2	2.45	0.52
1:A:655:TRP:HZ3	1:A:676:ILE:HG13	1.74	0.52
1:A:304:LYS:HD3	1:A:317:TRP:CH2	2.45	0.52
1:A:157:LEU:C	1:A:157:LEU:HD12	2.31	0.51
1:A:454:THR:O	1:A:476:PRO:HB3	2.10	0.51
1:A:129:ARG:HG3	1:A:150:HIS:CE1	2.47	0.50
1:A:15:GLN:NE2	1:A:452:GLY:O	2.45	0.50
1:A:161:HIS:HB3	1:A:164:ARG:O	2.12	0.50
1:A:157:LEU:O	1:A:157:LEU:HD12	2.12	0.49
1:A:356:MET:HB3	1:A:366:ARG:C	2.33	0.49
1:A:335:SER:CA	1:A:357:MET:HE3	2.34	0.49
1:A:26:LEU:HA	1:A:428:ASN:HD22	1.77	0.48
1:A:459:GLU:HG2	1:A:473:VAL:HG22	1.96	0.48
1:A:736:THR:OG1	1:A:737:PHE:N	2.47	0.47
1:A:757:ASP:O	1:A:759:HIS:N	2.47	0.47
1:A:349:GLU:HB3	1:A:377:ARG:NH2	2.29	0.47
1:A:284:TYR:CZ	1:A:311:GLY:HA2	2.50	0.46
1:A:485:ARG:O	1:A:485:ARG:HG3	2.15	0.46
1:A:57:LEU:O	1:A:93:PHE:HA	2.16	0.45
1:A:554:ASP:O	1:A:557:VAL:HG23	2.16	0.45
1:A:154:MET:SD	1:A:172:ALA:HB1	2.56	0.45
1:A:48:LYS:O	1:A:49:CYS:C	2.54	0.45
1:A:239:ARG:HA	1:A:270:TRP:O	2.16	0.45
1:A:854:ARG:HG2	1:A:855:LEU:O	2.16	0.45
1:A:158:LYS:HE2	5:A:2010:HOH:O	2.17	0.44
1:A:225:THR:HA	1:A:284:TYR:CD2	2.53	0.44
1:A:595:PHE:HZ	4:A:955:AY9:H62C	1.82	0.44
1:A:757:ASP:C	1:A:759:HIS:N	2.70	0.44
1:A:218:ALA:O	1:A:219:ILE:HD13	2.17	0.44
1:A:120:MET:HG3	4:A:954:AY9:O6	2.18	0.44
1:A:515:PHE:O	1:A:676:ILE:CD1	2.65	0.44
1:A:577:TRP:CZ3	1:A:620:THR:HG23	2.53	0.44
1:A:415:SER:HA	1:A:421:GLU:HA	2.00	0.43
1:A:199:SER:O	1:A:201:GLN:HG2	2.19	0.43
1:A:75:THR:O	1:A:78:ASN:HB2	2.17	0.43
1:A:446:LEU:HD13	1:A:472:LEU:HD22	2.00	0.43
1:A:65:ASP:OD1	1:A:90:LYS:HG3	2.19	0.43
1:A:87:PRO:O	1:A:141:ASP:HB2	2.19	0.42
1:A:155:HIS:CE1	1:A:156:ARG:NH1	2.87	0.42

Continued on next page...

Continued from previous page...

Atom-1	Atom-2	Interatomic distance (Å)	Clash overlap (Å)
1:A:498:CYS:SG	1:A:505:LYS:HE2	2.59	0.42
1:A:630:HIS:HB2	5:A:2152:HOH:O	2.19	0.42
1:A:638:CYS:HB3	1:A:688:TRP:CH2	2.54	0.42
1:A:631:ASN:OD1	1:A:633:VAL:HG22	2.20	0.42
1:A:513:ARG:O	1:A:514:PRO:C	2.59	0.42
1:A:157:LEU:CD1	1:A:157:LEU:C	2.89	0.41
1:A:822:LYS:HE3	5:A:2184:HOH:O	2.19	0.41
1:A:148:ILE:HG12	1:A:203:TRP:CD2	2.55	0.41
1:A:155:HIS:ND1	1:A:156:ARG:HG2	2.36	0.41
1:A:335:SER:C	1:A:357:MET:HE2	2.41	0.41
1:A:356:MET:HE3	1:A:366:ARG:HG2	2.03	0.41
1:A:36:TRP:O	1:A:54:GLY:HA2	2.21	0.40
1:A:335:SER:C	1:A:357:MET:CE	2.90	0.40
1:A:654:ARG:HD3	1:A:673:THR:OG1	2.21	0.40
1:A:883:ILE:HD12	1:A:885:GLN:HB3	2.02	0.40
1:A:431:LEU:O	1:A:433:THR:HG22	2.21	0.40

There are no symmetry-related clashes.

5.3 Torsion angles [i](#)

5.3.1 Protein backbone [i](#)

In the following table, the Percentiles column shows the percent Ramachandran outliers of the chain as a percentile score with respect to all X-ray entries followed by that with respect to entries of similar resolution.

The Analysed column shows the number of residues for which the backbone conformation was analysed, and the total number of residues.

Mol	Chain	Analysed	Favoured	Allowed	Outliers	Percentiles
1	A	878/900 (98%)	833 (95%)	42 (5%)	3 (0%)	41 64

All (3) Ramachandran outliers are listed below:

Mol	Chain	Res	Type
1	A	758	PRO
1	A	142	ASN
1	A	610	ALA

5.3.2 Protein sidechains ⓘ

In the following table, the Percentiles column shows the percent sidechain outliers of the chain as a percentile score with respect to all X-ray entries followed by that with respect to entries of similar resolution.

The Analysed column shows the number of residues for which the sidechain conformation was analysed, and the total number of residues.

Mol	Chain	Analysed	Rotameric	Outliers	Percentiles
1	A	724/742 (98%)	700 (97%)	24 (3%)	38 64

All (24) residues with a non-rotameric sidechain are listed below:

Mol	Chain	Res	Type
1	A	25	GLN
1	A	57	LEU
1	A	67	GLN
1	A	82	SER
1	A	88	LEU
1	A	131	SER
1	A	138	GLU
1	A	157	LEU
1	A	206	ASP
1	A	360	ASP
1	A	385[A]	THR
1	A	385[B]	THR
1	A	388	SER
1	A	405	SER
1	A	432	SER
1	A	433	THR
1	A	498	CYS
1	A	543	SER
1	A	554	ASP
1	A	671	GLU
1	A	750	ARG
1	A	757	ASP
1	A	760	GLN
1	A	783	LEU

Some sidechains can be flipped to improve hydrogen bonding and reduce clashes. All (7) such sidechains are listed below:

Mol	Chain	Res	Type
1	A	15	GLN

Continued on next page...

Continued from previous page...

Mol	Chain	Res	Type
1	A	150	HIS
1	A	201	GLN
1	A	428	ASN
1	A	602	HIS
1	A	760	GLN
1	A	823	ASN

5.3.3 RNA ⓘ

There are no RNA molecules in this entry.

5.4 Non-standard residues in protein, DNA, RNA chains ⓘ

There are no non-standard protein/DNA/RNA residues in this entry.

5.5 Carbohydrates ⓘ

There are no monosaccharides in this entry.

5.6 Ligand geometry ⓘ

Of 6 ligands modelled in this entry, 4 are monoatomic - leaving 2 for Mogul analysis.

In the following table, the Counts columns list the number of bonds (or angles) for which Mogul statistics could be retrieved, the number of bonds (or angles) that are observed in the model and the number of bonds (or angles) that are defined in the Chemical Component Dictionary. The Link column lists molecule types, if any, to which the group is linked. The Z score for a bond length (or angle) is the number of standard deviations the observed value is removed from the expected value. A bond length (or angle) with $|Z| > 2$ is considered an outlier worth inspection. RMSZ is the root-mean-square of all Z scores of the bond lengths (or angles).

Mol	Type	Chain	Res	Link	Bond lengths			Bond angles		
					Counts	RMSZ	$\# Z > 2$	Counts	RMSZ	$\# Z > 2$
4	AY9	A	954	2	7,10,10	2.18	1 (14%)	7,13,13	2.18	3 (42%)
4	AY9	A	955	-	7,10,10	2.27	1 (14%)	7,13,13	2.09	4 (57%)

In the following table, the Chirals column lists the number of chiral outliers, the number of chiral centers analysed, the number of these observed in the model and the number defined in the Chemical Component Dictionary. Similar counts are reported in the Torsion and Rings columns. '-' means no outliers of that kind were identified.

Mol	Type	Chain	Res	Link	Chirals	Torsions	Rings
4	AY9	A	954	2	-	2/2/15/15	0/1/1/1
4	AY9	A	955	-	-	2/2/15/15	0/1/1/1

All (2) bond length outliers are listed below:

Mol	Chain	Res	Type	Atoms	Z	Observed(Å)	Ideal(Å)
4	A	954	AY9	C5-C4	-5.45	1.40	1.50
4	A	955	AY9	C5-C4	-5.12	1.41	1.50

All (7) bond angle outliers are listed below:

Mol	Chain	Res	Type	Atoms	Z	Observed(°)	Ideal(°)
4	A	954	AY9	O6-C6-C5	-4.08	106.36	112.42
4	A	954	AY9	C6-C5-C4	3.18	119.73	112.48
4	A	955	AY9	O2-C2-C3	3.04	122.97	119.89
4	A	955	AY9	C6-C5-C4	2.59	118.39	112.48
4	A	955	AY9	O3-C3-C2	2.30	120.33	115.89
4	A	954	AY9	C5-C4-C3	-2.26	116.80	121.19
4	A	955	AY9	O6-C6-C5	-2.24	109.09	112.42

There are no chirality outliers.

All (4) torsion outliers are listed below:

Mol	Chain	Res	Type	Atoms
4	A	954	AY9	C4-C5-C6-O6
4	A	955	AY9	C4-C5-C6-O6
4	A	954	AY9	O5-C5-C6-O6
4	A	955	AY9	O5-C5-C6-O6

There are no ring outliers.

2 monomers are involved in 4 short contacts:

Mol	Chain	Res	Type	Clashes	Symm-Clashes
4	A	954	AY9	3	0
4	A	955	AY9	1	0

5.7 Other polymers [i](#)

There are no such residues in this entry.

5.8 Polymer linkage issues

There are no chain breaks in this entry.

6 Fit of model and data [i](#)

6.1 Protein, DNA and RNA chains [i](#)

In the following table, the column labelled ‘#RSRZ> 2’ contains the number (and percentage) of RSRZ outliers, followed by percent RSRZ outliers for the chain as percentile scores relative to all X-ray entries and entries of similar resolution. The OWAB column contains the minimum, median, 95th percentile and maximum values of the occupancy-weighted average B-factor per residue. The column labelled ‘Q< 0.9’ lists the number of (and percentage) of residues with an average occupancy less than 0.9.

Mol	Chain	Analysed	<RSRZ>	#RSRZ>2	OWAB(Å ²)	Q<0.9
1	A	881/900 (97%)	-0.50	12 (1%) 75 71	16, 32, 65, 120	0

All (12) RSRZ outliers are listed below:

Mol	Chain	Res	Type	RSRZ
1	A	758	PRO	4.9
1	A	760	GLN	4.3
1	A	900	ASN	3.8
1	A	785	GLY	3.7
1	A	759	HIS	3.7
1	A	871	ILE	3.6
1	A	784	ASP	2.8
1	A	783	LEU	2.5
1	A	781	LEU	2.4
1	A	786	GLY	2.3
1	A	762	ALA	2.3
1	A	878	ASP	2.1

6.2 Non-standard residues in protein, DNA, RNA chains [i](#)

There are no non-standard protein/DNA/RNA residues in this entry.

6.3 Carbohydrates [i](#)

There are no monosaccharides in this entry.

6.4 Ligands [i](#)

In the following table, the Atoms column lists the number of modelled atoms in the group and the number defined in the chemical component dictionary. The B-factors column lists the minimum,

median, 95th percentile and maximum values of B factors of atoms in the group. The column labelled 'Q< 0.9' lists the number of atoms with occupancy less than 0.9.

Mol	Type	Chain	Res	Atoms	RSCC	RSR	B-factors(\AA^2)	Q<0.9
3	MG	A	953	1/1	0.94	0.08	55,55,55,55	0
4	AY9	A	955	10/10	0.94	0.13	43,49,50,51	0
4	AY9	A	954	10/10	0.99	0.12	30,33,38,41	0
2	ZN	A	951	1/1	0.99	0.09	70,70,70,70	0
2	ZN	A	950	1/1	0.99	0.05	28,28,28,28	0
2	ZN	A	952	1/1	1.00	0.04	33,33,33,33	0

6.5 Other polymers [i](#)

There are no such residues in this entry.