



Full wwPDB X-ray Structure Validation Report ⓘ

May 15, 2020 – 01:25 am BST

PDB ID : 2A9A
Title : Crystal structure of recombinant chicken sulfite oxidase with the bound product, sulfate, at the active site
Authors : Karakas, E.; Wilson, H.L.; Graf, T.N.; Xiang, S.; Jaramillo-Busquets, S.; Rajagopalan, K.V.; Kisker, C.
Deposited on : 2005-07-11
Resolution : 2.00 Å(reported)

This is a Full wwPDB X-ray Structure Validation Report for a publicly released PDB entry.

We welcome your comments at validation@mail.wwpdb.org

A user guide is available at

<https://www.wwpdb.org/validation/2017/XrayValidationReportHelp>

with specific help available everywhere you see the ⓘ symbol.

The following versions of software and data (see [references ⓘ](#)) were used in the production of this report:

MolProbity : 4.02b-467
Mogul : 1.8.5 (274361), CSD as541be (2020)
Xtriage (Phenix) : 1.13
EDS : 2.11
buster-report : 1.1.7 (2018)
Percentile statistics : 20191225.v01 (using entries in the PDB archive December 25th 2019)
Refmac : 5.8.0158
CCP4 : 7.0.044 (Gargrove)
Ideal geometry (proteins) : Engh & Huber (2001)
Ideal geometry (DNA, RNA) : Parkinson et al. (1996)
Validation Pipeline (wwPDB-VP) : 2.11

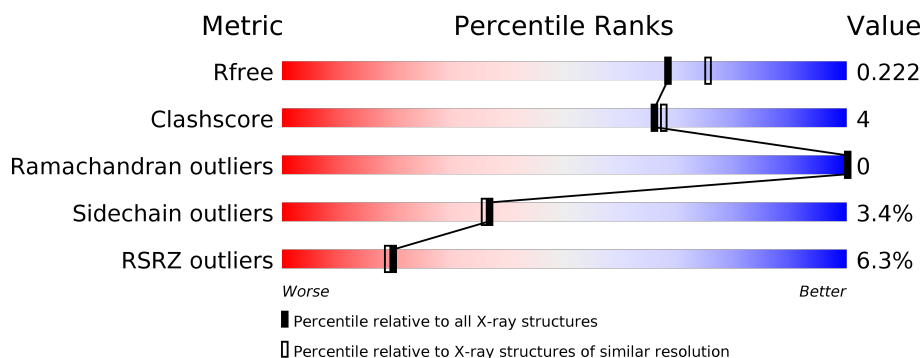
1 Overall quality at a glance

The following experimental techniques were used to determine the structure:

X-RAY DIFFRACTION

The reported resolution of this entry is 2.00 Å.

Percentile scores (ranging between 0-100) for global validation metrics of the entry are shown in the following graphic. The table shows the number of entries on which the scores are based.



Metric	Whole archive (#Entries)	Similar resolution (#Entries, resolution range(Å))
R_{free}	130704	8085 (2.00-2.00)
Clashscore	141614	9178 (2.00-2.00)
Ramachandran outliers	138981	9054 (2.00-2.00)
Sidechain outliers	138945	9053 (2.00-2.00)
RSRZ outliers	127900	7900 (2.00-2.00)

The table below summarises the geometric issues observed across the polymeric chains and their fit to the electron density. The red, orange, yellow and green segments on the lower bar indicate the fraction of residues that contain outliers for ≥ 3 , 2, 1 and 0 types of geometric quality criteria respectively. A grey segment represents the fraction of residues that are not modelled. The numeric value for each fraction is indicated below the corresponding segment, with a dot representing fractions $\leq 5\%$. The upper red bar (where present) indicates the fraction of residues that have poor fit to the electron density. The numeric value is given above the bar.

Mol	Chain	Length	Quality of chain
1	A	372	<div> <div>6%</div> <div>89%</div> <div>11%</div> </div>
1	B	372	<div> <div>6%</div> <div>86%</div> <div>10%</div> <div>••</div> </div>

2 Entry composition [i](#)

There are 5 unique types of molecules in this entry. The entry contains 6365 atoms, of which 0 are hydrogens and 0 are deuteriums.

In the tables below, the ZeroOcc column contains the number of atoms modelled with zero occupancy, the AltConf column contains the number of residues with at least one atom in alternate conformation and the Trace column contains the number of residues modelled with at most 2 atoms.

- Molecule 1 is a protein called Sulfite Oxidase.

Mol	Chain	Residues	Atoms					ZeroOcc	AltConf	Trace
1	A	371	Total	C	N	O	S	0	0	0
			2863	1815	521	520	7			
1	B	359	Total	C	N	O	S	0	0	0
			2774	1757	504	506	7			

- Molecule 2 is SULFATE ION (three-letter code: SO₄) (formula: O₄S).



Mol	Chain	Residues	Atoms			ZeroOcc	AltConf
2	A	1	Total	O	S	0	0
			5	4	1		
2	A	1	Total	O	S	0	0
			5	4	1		
2	B	1	Total	O	S	0	0
			5	4	1		
2	B	1	Total	O	S	0	0
			5	4	1		

-
- The chemical structure of MTE (Methylthionucleoside) is shown. It consists of a pyrimidine ring with a methylthio group (-S-CH₃) at the 5-position and a phosphate group at the 3-position. The atoms are labeled with their respective symbols and positions: N1, N3, N7, N9 for the ring nitrogens; C2, C4, C6, C8 for the ring carbons; S1, S2 for the sulfur atoms; O1, O2, O3, O4 for the oxygen atoms; and P for the phosphate phosphorus. The methyl group is attached to S1. The phosphate group is attached to C3 via an oxygen atom (O3). The structure is color-coded: blue for the pyrimidine ring, yellow for the methylthio group, and red for the phosphate group.

Mol	Chain	Residues	Atoms						ZeroOcc	AltConf
3	A	1	Total 24	C 10	N 5	O 6	P 1	S 2	0	0
3	B	1	Total 24	C 10	N 5	O 6	P 1	S 2	0	0

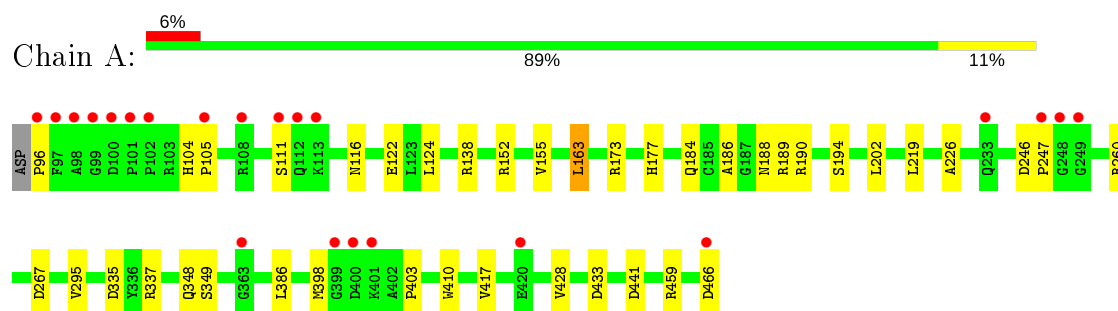
- | Mol | Chain | Residues | Atoms | ZeroOcc | AltConf |
|-----|-------|----------|-----------------|---------|---------|
| 4 | B | 1 | Total Mo
1 1 | 0 | 0 |
| 4 | A | 1 | Total Mo
1 1 | 0 | 0 |

- | Mol | Chain | Residues | Atoms | ZeroOcc | AltConf |
|-----|-------|----------|--------------------|---------|---------|
| 5 | A | 339 | Total O
339 339 | 0 | 0 |
| 5 | B | 319 | Total O
319 319 | 0 | 0 |

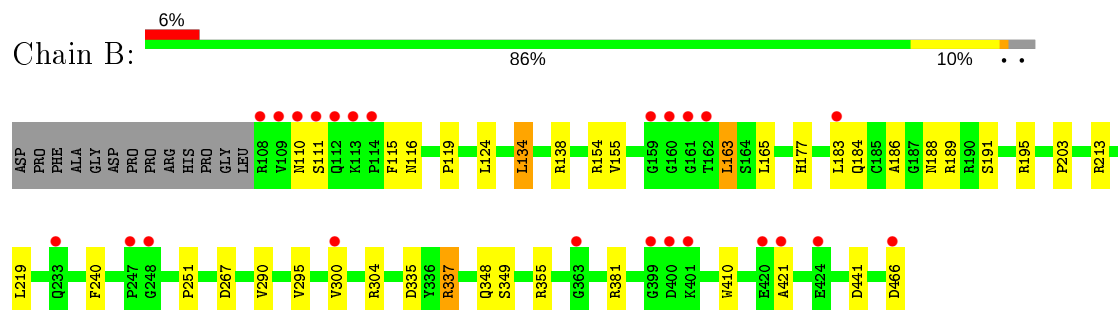
3 Residue-property plots [i](#)

These plots are drawn for all protein, RNA and DNA chains in the entry. The first graphic for a chain summarises the proportions of the various outlier classes displayed in the second graphic. The second graphic shows the sequence view annotated by issues in geometry and electron density. Residues are color-coded according to the number of geometric quality criteria for which they contain at least one outlier: green = 0, yellow = 1, orange = 2 and red = 3 or more. A red dot above a residue indicates a poor fit to the electron density ($RSRZ > 2$). Stretches of 2 or more consecutive residues without any outlier are shown as a green connector. Residues present in the sample, but not in the model, are shown in grey.

• Molecule 1: Sulfite Oxidase



• Molecule 1: Sulfite Oxidase



4 Data and refinement statistics

Property	Value	Source
Space group	P 1 21 1	Depositor
Cell constants a, b, c, α , β , γ	54.00Å 123.17Å 55.48Å 90.00° 94.70° 90.00°	Depositor
Resolution (Å)	30.00 – 2.00 28.74 – 2.00	Depositor EDS
% Data completeness (in resolution range)	98.8 (30.00-2.00) 98.8 (28.74-2.00)	Depositor EDS
R_{merge}	0.10	Depositor
R_{sym}	(Not available)	Depositor
$\langle I/\sigma(I) \rangle$ ¹	1.42 (at 2.00Å)	Xtriage
Refinement program	REFMAC 5.2	Depositor
R, R_{free}	0.159 , 0.216 0.170 , 0.222	Depositor DCC
R_{free} test set	2419 reflections (5.05%)	wwPDB-VP
Wilson B-factor (Å ²)	21.0	Xtriage
Anisotropy	0.130	Xtriage
Bulk solvent k_{sol} (e/Å ³), B_{sol} (Å ²)	0.37 , 50.2	EDS
L-test for twinning ²	$\langle L \rangle = 0.49$, $\langle L^2 \rangle = 0.33$	Xtriage
Estimated twinning fraction	0.028 for l,-k,h	Xtriage
F_o, F_c correlation	0.96	EDS
Total number of atoms	6365	wwPDB-VP
Average B, all atoms (Å ²)	25.0	wwPDB-VP

Xtriage's analysis on translational NCS is as follows: *The largest off-origin peak in the Patterson function is 5.45% of the height of the origin peak. No significant pseudotranslation is detected.*

¹Intensities estimated from amplitudes.

²Theoretical values of $\langle |L| \rangle$, $\langle L^2 \rangle$ for acentric reflections are 0.5, 0.333 respectively for untwinned datasets, and 0.375, 0.2 for perfectly twinned datasets.

5 Model quality

5.1 Standard geometry

Bond lengths and bond angles in the following residue types are not validated in this section: MO, SO4, MTE

The Z score for a bond length (or angle) is the number of standard deviations the observed value is removed from the expected value. A bond length (or angle) with $|Z| > 5$ is considered an outlier worth inspection. RMSZ is the root-mean-square of all Z scores of the bond lengths (or angles).

Mol	Chain	Bond lengths		Bond angles	
		RMSZ	$\# Z > 5$	RMSZ	$\# Z > 5$
1	A	0.75	0/2951	0.88	1/4037 (0.0%)
1	B	0.78	1/2856 (0.0%)	0.89	6/3906 (0.2%)
All	All	0.76	1/5807 (0.0%)	0.88	7/7943 (0.1%)

All (1) bond length outliers are listed below:

Mol	Chain	Res	Type	Atoms	Z	Observed(Å)	Ideal(Å)
1	B	115	PHE	CB-CG	-5.38	1.42	1.51

All (7) bond angle outliers are listed below:

Mol	Chain	Res	Type	Atoms	Z	Observed(°)	Ideal(°)
1	B	213	ARG	NE-CZ-NH2	-7.15	116.73	120.30
1	B	355	ARG	NE-CZ-NH1	6.55	123.58	120.30
1	A	260	ARG	NE-CZ-NH1	6.07	123.33	120.30
1	B	355	ARG	NE-CZ-NH2	-5.54	117.53	120.30
1	B	337	ARG	NE-CZ-NH2	-5.19	117.71	120.30
1	B	381	ARG	NE-CZ-NH1	5.15	122.88	120.30
1	B	337	ARG	NE-CZ-NH1	5.07	122.84	120.30

There are no chirality outliers.

There are no planarity outliers.

5.2 Too-close contacts

In the following table, the Non-H and H(model) columns list the number of non-hydrogen atoms and hydrogen atoms in the chain respectively. The H(added) column lists the number of hydrogen atoms added and optimized by MolProbity. The Clashes column lists the number of clashes within the asymmetric unit, whereas Symm-Clashes lists symmetry related clashes.

Mol	Chain	Non-H	H(model)	H(added)	Clashes	Symm-Clashes
1	A	2863	0	2803	25	0
1	B	2774	0	2719	19	0
2	A	10	0	0	0	0
2	B	10	0	0	0	0
3	A	24	0	10	0	0
3	B	24	0	10	0	0
4	A	1	0	0	0	0
4	B	1	0	0	0	0
5	A	339	0	0	7	1
5	B	319	0	0	3	1
All	All	6365	0	5542	44	1

The all-atom clashscore is defined as the number of clashes found per 1000 atoms (including hydrogen atoms). The all-atom clashscore for this structure is 4.

All (44) close contacts within the same asymmetric unit are listed below, sorted by their clash magnitude.

Atom-1	Atom-2	Interatomic distance (Å)	Clash overlap (Å)
1:A:152:ARG:CZ	5:A:7831:HOH:O	2.28	0.80
1:A:152:ARG:NH2	5:A:7831:HOH:O	2.17	0.78
1:B:183:LEU:HD21	5:B:8816:HOH:O	1.85	0.74
1:A:189:ARG:HH11	1:A:348:GLN:HE22	1.34	0.74
1:B:335:ASP:OD1	1:B:337:ARG:HD3	1.88	0.74
1:A:152:ARG:NE	5:A:7831:HOH:O	2.18	0.73
1:A:466:ASP:OD2	5:A:7702:HOH:O	2.08	0.70
1:B:119:PRO:HB3	1:B:134:LEU:HD22	1.73	0.69
1:B:184:GLN:NE2	1:B:188:ASN:HD22	1.92	0.67
1:B:184:GLN:HE21	1:B:188:ASN:HD22	1.41	0.65
1:A:96:PRO:N	5:A:7639:HOH:O	2.31	0.63
1:A:104:HIS:CD2	1:A:105:PRO:HD2	2.34	0.62
1:A:184:GLN:HE21	1:A:188:ASN:HD22	1.48	0.61
1:A:398:MET:O	5:A:7824:HOH:O	2.17	0.60
1:A:189:ARG:HH11	1:A:348:GLN:NE2	1.98	0.60
1:B:189:ARG:HH11	1:B:348:GLN:HE22	1.51	0.58
1:A:386:LEU:HD11	1:A:417:VAL:HG11	1.85	0.58
1:B:348:GLN:HE21	1:B:349:SER:H	1.55	0.55
1:A:173:ARG:NE	5:A:7707:HOH:O	2.35	0.55
1:A:177:HIS:HE1	1:A:267:ASP:OD1	1.93	0.52
1:A:184:GLN:NE2	1:A:188:ASN:HD22	2.07	0.52
1:B:290:VAL:HG13	5:B:8816:HOH:O	2.10	0.52
1:B:189:ARG:HH11	1:B:348:GLN:NE2	2.10	0.49
1:A:186:ALA:HB2	1:A:295:VAL:HG21	1.96	0.48

Continued on next page...

Continued from previous page...

Atom-1	Atom-2	Interatomic distance (Å)	Clash overlap (Å)
1:B:110:ASN:HB2	1:B:203:PRO:HD2	1.95	0.48
1:B:191:SER:OG	5:B:8625:HOH:O	2.20	0.48
1:B:111:SER:HB3	1:B:116:ASN:HD22	1.80	0.46
1:B:163:LEU:HD22	1:B:165:LEU:HG	1.96	0.46
1:A:348:GLN:HE21	1:A:349:SER:H	1.63	0.45
1:B:184:GLN:HE21	1:B:188:ASN:HB3	1.82	0.45
1:B:251:PRO:HB3	1:B:304:ARG:HH22	1.81	0.45
1:A:335:ASP:OD1	1:A:337:ARG:HD3	2.17	0.45
1:B:240:PHE:HB2	1:B:300:VAL:HG21	1.99	0.45
1:A:111:SER:HB3	1:A:116:ASN:HD22	1.82	0.44
1:B:177:HIS:HE1	1:B:267:ASP:OD1	2.01	0.44
1:A:246:ASP:HB2	1:A:247:PRO:HD2	1.99	0.44
1:B:186:ALA:HB2	1:B:295:VAL:HG21	2.01	0.42
1:B:421:ALA:HB1	1:B:466:ASP:HA	2.01	0.42
1:A:190:ARG:HD2	1:A:202:LEU:O	2.20	0.41
1:A:163:LEU:HD12	1:A:226:ALA:HB2	2.03	0.41
1:A:428:VAL:HG22	1:A:459:ARG:HG2	2.03	0.41
1:A:189:ARG:NH1	1:A:348:GLN:HE22	2.11	0.40
1:A:184:GLN:HE21	1:A:188:ASN:HB3	1.86	0.40
1:A:433:ASP:C	1:A:433:ASP:OD1	2.60	0.40

All (1) symmetry-related close contacts are listed below. The label for Atom-2 includes the symmetry operator and encoded unit-cell translations to be applied.

Atom-1	Atom-2	Interatomic distance (Å)	Clash overlap (Å)
5:A:7837:HOH:O	5:B:8652:HOH:O[1_554]	2.18	0.02

5.3 Torsion angles [i](#)

5.3.1 Protein backbone [i](#)

In the following table, the Percentiles column shows the percent Ramachandran outliers of the chain as a percentile score with respect to all X-ray entries followed by that with respect to entries of similar resolution.

The Analysed column shows the number of residues for which the backbone conformation was analysed, and the total number of residues.

Mol	Chain	Analysed	Favoured	Allowed	Outliers	Percentiles
1	A	369/372 (99%)	361 (98%)	8 (2%)	0	100 100

Continued on next page...

Continued from previous page...

Mol	Chain	Analysed	Favoured	Allowed	Outliers	Percentiles	
1	B	357/372 (96%)	352 (99%)	5 (1%)	0	100	100
All	All	726/744 (98%)	713 (98%)	13 (2%)	0	100	100

There are no Ramachandran outliers to report.

5.3.2 Protein sidechains ⓘ

In the following table, the Percentiles column shows the percent sidechain outliers of the chain as a percentile score with respect to all X-ray entries followed by that with respect to entries of similar resolution.

The Analysed column shows the number of residues for which the sidechain conformation was analysed, and the total number of residues.

Mol	Chain	Analysed	Rotameric	Outliers	Percentiles	
1	A	300/301 (100%)	290 (97%)	10 (3%)	38	37
1	B	291/301 (97%)	281 (97%)	10 (3%)	37	36
All	All	591/602 (98%)	571 (97%)	20 (3%)	37	36

All (20) residues with a non-rotameric sidechain are listed below:

Mol	Chain	Res	Type
1	A	122	GLU
1	A	124	LEU
1	A	138	ARG
1	A	155	VAL
1	A	163	LEU
1	A	194	SER
1	A	219	LEU
1	A	403	PRO
1	A	410	TRP
1	A	441	ASP
1	B	124	LEU
1	B	134	LEU
1	B	138	ARG
1	B	154	ARG
1	B	155	VAL
1	B	163	LEU
1	B	195	ARG
1	B	219	LEU

Continued on next page...

Continued from previous page...

Mol	Chain	Res	Type
1	B	410	TRP
1	B	441	ASP

Some sidechains can be flipped to improve hydrogen bonding and reduce clashes. All (13) such sidechains are listed below:

Mol	Chain	Res	Type
1	A	177	HIS
1	A	184	GLN
1	A	319	GLN
1	A	343	GLN
1	A	348	GLN
1	A	437	ASN
1	A	465	GLN
1	B	177	HIS
1	B	184	GLN
1	B	319	GLN
1	B	343	GLN
1	B	348	GLN
1	B	465	GLN

5.3.3 RNA [i](#)

There are no RNA molecules in this entry.

5.4 Non-standard residues in protein, DNA, RNA chains [i](#)

There are no non-standard protein/DNA/RNA residues in this entry.

5.5 Carbohydrates [i](#)

There are no carbohydrates in this entry.

5.6 Ligand geometry [i](#)

Of 8 ligands modelled in this entry, 2 are monoatomic - leaving 6 for Mogul analysis.

In the following table, the Counts columns list the number of bonds (or angles) for which Mogul statistics could be retrieved, the number of bonds (or angles) that are observed in the model and the number of bonds (or angles) that are defined in the Chemical Component Dictionary. The

Link column lists molecule types, if any, to which the group is linked. The Z score for a bond length (or angle) is the number of standard deviations the observed value is removed from the expected value. A bond length (or angle) with $|Z| > 2$ is considered an outlier worth inspection. RMSZ is the root-mean-square of all Z scores of the bond lengths (or angles).

Mol	Type	Chain	Res	Link	Bond lengths			Bond angles		
					Counts	RMSZ	# Z > 2	Counts	RMSZ	# Z > 2
2	SO4	B	8503	-	4,4,4	0.19	0	6,6,6	0.44	0
3	MTE	B	4501	4	21,26,26	1.87	6 (28%)	21,40,40	2.65	8 (38%)
2	SO4	B	8504	-	4,4,4	0.19	0	6,6,6	0.26	0
3	MTE	A	1501	4	21,26,26	2.32	6 (28%)	21,40,40	2.98	11 (52%)
2	SO4	A	7503	-	4,4,4	0.28	0	6,6,6	0.41	0
2	SO4	A	7504	-	4,4,4	0.15	0	6,6,6	0.42	0

In the following table, the Chirals column lists the number of chiral outliers, the number of chiral centers analysed, the number of these observed in the model and the number defined in the Chemical Component Dictionary. Similar counts are reported in the Torsion and Rings columns. '-' means no outliers of that kind were identified.

Mol	Type	Chain	Res	Link	Chirals	Torsions	Rings
3	MTE	B	4501	4	-	0/6/34/34	0/3/3/3
3	MTE	A	1501	4	-	0/6/34/34	0/3/3/3

All (12) bond length outliers are listed below:

Mol	Chain	Res	Type	Atoms	Z	Observed(Å)	Ideal(Å)
3	A	1501	MTE	C7-C6	6.58	1.58	1.53
3	B	4501	MTE	C6-N5	-4.04	1.39	1.45
3	B	4501	MTE	C4'-C3'	-3.72	1.47	1.52
3	A	1501	MTE	C4'-C3'	-3.61	1.47	1.52
3	B	4501	MTE	C4-N3	3.46	1.39	1.33
3	A	1501	MTE	C4-N3	3.36	1.38	1.33
3	A	1501	MTE	C6-N5	-3.29	1.40	1.45
3	A	1501	MTE	O3'-C3'	-3.28	1.39	1.43
3	B	4501	MTE	O3'-C7	2.64	1.47	1.43
3	B	4501	MTE	C7-C6	2.35	1.55	1.53
3	B	4501	MTE	C2-N1	-2.20	1.31	1.35
3	A	1501	MTE	O3'-C7	2.16	1.46	1.43

All (19) bond angle outliers are listed below:

Mol	Chain	Res	Type	Atoms	Z	Observed(°)	Ideal(°)
3	A	1501	MTE	O3'-C7-C6	-8.18	103.51	108.96
3	B	4501	MTE	N3-C2-N1	-5.98	116.04	125.42

Continued on next page...

Continued from previous page...

Mol	Chain	Res	Type	Atoms	Z	Observed(°)	Ideal(°)
3	B	4501	MTE	O3'-C7-C6	-5.57	105.25	108.96
3	A	1501	MTE	C4-N3-C2	5.49	124.66	115.93
3	A	1501	MTE	N3-C2-N1	-4.88	117.77	125.42
3	B	4501	MTE	C4-C9-N5	4.68	123.05	119.12
3	B	4501	MTE	C4-N3-C2	3.88	122.09	115.93
3	A	1501	MTE	N2-C2-N1	3.58	122.82	117.25
3	B	4501	MTE	C2-N1-C10	3.09	121.47	114.54
3	A	1501	MTE	C9-C4-N3	-3.02	115.41	124.01
3	A	1501	MTE	C10-N8-C7	-2.79	118.21	123.67
3	A	1501	MTE	C9-C10-N8	2.78	120.67	118.13
3	A	1501	MTE	O3'-C7-N8	-2.59	105.91	108.57
3	B	4501	MTE	N2-C2-N1	2.42	121.02	117.25
3	B	4501	MTE	C9-C4-N3	-2.42	117.15	124.01
3	A	1501	MTE	C2-N1-C10	2.37	119.85	114.54
3	B	4501	MTE	C9-C10-N8	2.19	120.14	118.13
3	A	1501	MTE	C7-C6-C1'	-2.02	106.00	110.53
3	A	1501	MTE	C4-C9-C10	2.01	116.35	114.57

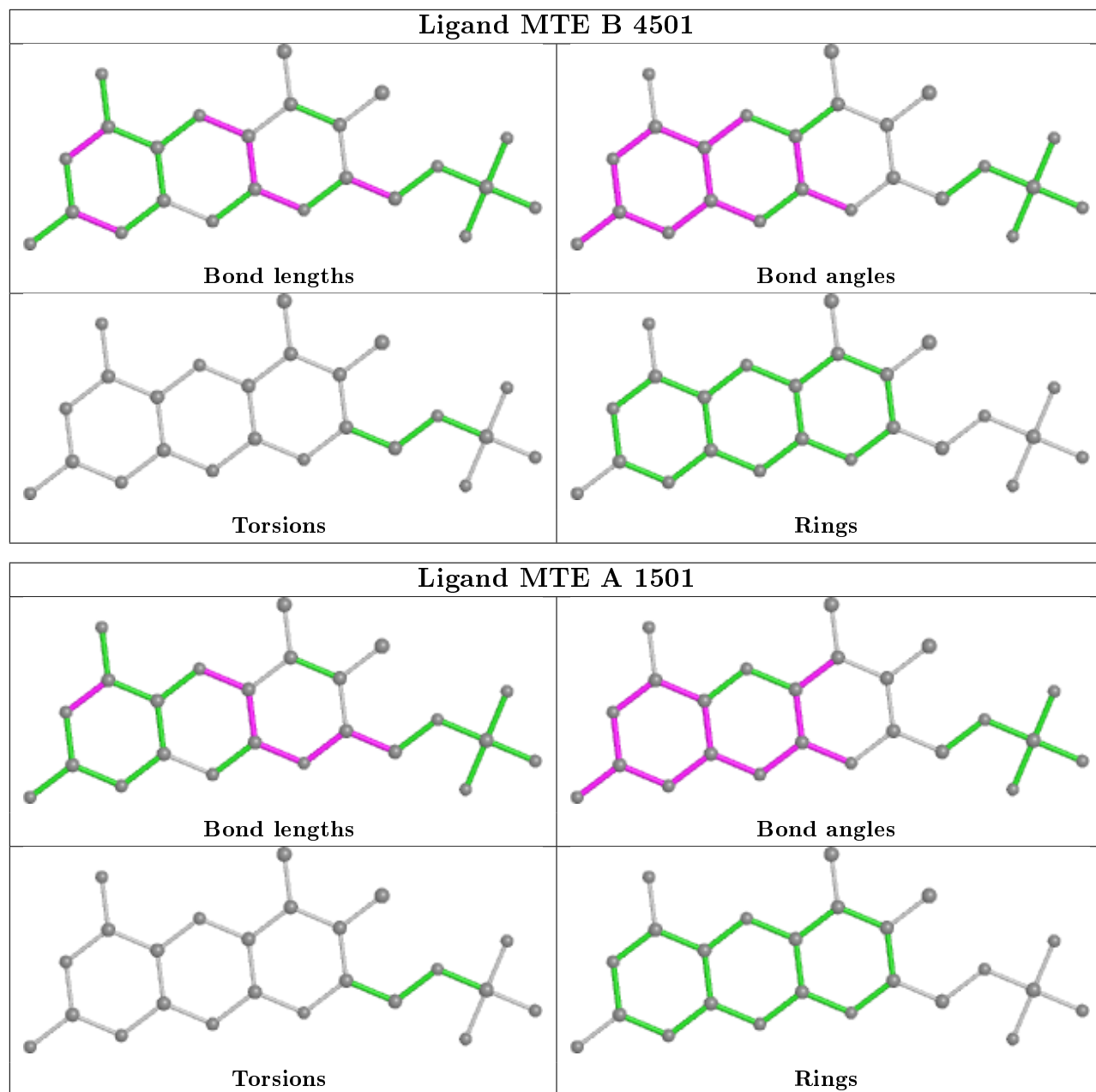
There are no chirality outliers.

There are no torsion outliers.

There are no ring outliers.

No monomer is involved in short contacts.

The following is a two-dimensional graphical depiction of Mogul quality analysis of bond lengths, bond angles, torsion angles, and ring geometry for all instances of the Ligand of Interest. In addition, ligands with molecular weight > 250 and outliers as shown on the validation Tables will also be included. For torsion angles, if less than 5% of the Mogul distribution of torsion angles is within 10 degrees of the torsion angle in question, then that torsion angle is considered an outlier. Any bond that is central to one or more torsion angles identified as an outlier by Mogul will be highlighted in the graph. For rings, the root-mean-square deviation (RMSD) between the ring in question and similar rings identified by Mogul is calculated over all ring torsion angles. If the average RMSD is greater than 60 degrees and the minimal RMSD between the ring in question and any Mogul-identified rings is also greater than 60 degrees, then that ring is considered an outlier. The outliers are highlighted in purple. The color gray indicates Mogul did not find sufficient equivalents in the CSD to analyse the geometry.



5.7 Other polymers [i](#)

There are no such residues in this entry.

5.8 Polymer linkage issues [i](#)

There are no chain breaks in this entry.

6 Fit of model and data ⓘ

6.1 Protein, DNA and RNA chains ⓘ

In the following table, the column labelled ‘#RSRZ > 2’ contains the number (and percentage) of RSRZ outliers, followed by percent RSRZ outliers for the chain as percentile scores relative to all X-ray entries and entries of similar resolution. The OWAB column contains the minimum, median, 95th percentile and maximum values of the occupancy-weighted average B-factor per residue. The column labelled ‘Q < 0.9’ lists the number of (and percentage) of residues with an average occupancy less than 0.9.

Mol	Chain	Analysed	<RSRZ>	#RSRZ > 2		OWAB(Å ²)	Q < 0.9
1	A	371/372 (99%)	-0.02	22 (5%)	22 21	14, 22, 46, 57	0
1	B	359/372 (96%)	-0.00	24 (6%)	17 17	15, 22, 40, 58	0
All	All	730/744 (98%)	-0.01	46 (6%)	20 19	14, 22, 41, 58	0

All (46) RSRZ outliers are listed below:

Mol	Chain	Res	Type	RSRZ
1	B	247	PRO	5.4
1	B	400	ASP	4.6
1	B	399	GLY	4.4
1	A	97	PHE	4.3
1	A	247	PRO	4.3
1	A	400	ASP	4.2
1	A	98	ALA	4.2
1	A	99	GLY	4.2
1	A	112	GLN	4.2
1	A	105	PRO	3.7
1	B	113	LYS	3.6
1	B	110	ASN	3.6
1	B	161	GLY	3.5
1	B	233	GLN	3.5
1	A	466	ASP	3.5
1	B	248	GLY	3.5
1	A	96	PRO	3.4
1	B	466	ASP	3.2
1	B	111	SER	3.0
1	B	421	ALA	2.9
1	A	401	LYS	2.9
1	A	108	ARG	2.9
1	A	420	GLU	2.9
1	B	112	GLN	2.9

Continued on next page...

Continued from previous page...

Mol	Chain	Res	Type	RSRZ
1	A	101	PRO	2.9
1	A	111	SER	2.8
1	A	100	ASP	2.8
1	B	401	LYS	2.8
1	A	399	GLY	2.7
1	A	102	PRO	2.7
1	B	160	GLY	2.6
1	B	162	THR	2.6
1	A	233	GLN	2.6
1	B	109	VAL	2.5
1	A	363	GLY	2.4
1	B	159	GLY	2.4
1	B	108	ARG	2.3
1	B	114	PRO	2.3
1	A	248	GLY	2.3
1	B	424	GLU	2.2
1	B	420	GLU	2.2
1	A	113	LYS	2.2
1	A	249	GLY	2.1
1	B	183	LEU	2.1
1	B	363	GLY	2.0
1	B	300	VAL	2.0

6.2 Non-standard residues in protein, DNA, RNA chains [i](#)

There are no non-standard protein/DNA/RNA residues in this entry.

6.3 Carbohydrates [i](#)

There are no carbohydrates in this entry.

6.4 Ligands [i](#)

In the following table, the Atoms column lists the number of modelled atoms in the group and the number defined in the chemical component dictionary. The B-factors column lists the minimum, median, 95th percentile and maximum values of B factors of atoms in the group. The column labelled 'Q< 0.9' lists the number of atoms with occupancy less than 0.9.

Mol	Type	Chain	Res	Atoms	RSCC	RSR	B-factors(\AA^2)	Q<0.9
2	SO4	A	7504	5/5	0.92	0.16	67,68,69,70	0

Continued on next page...

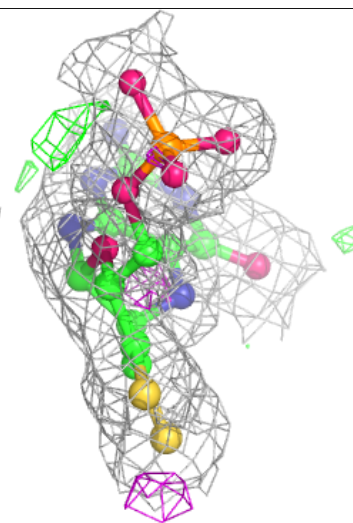
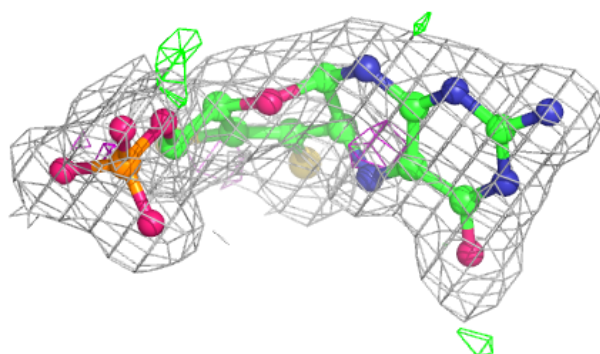
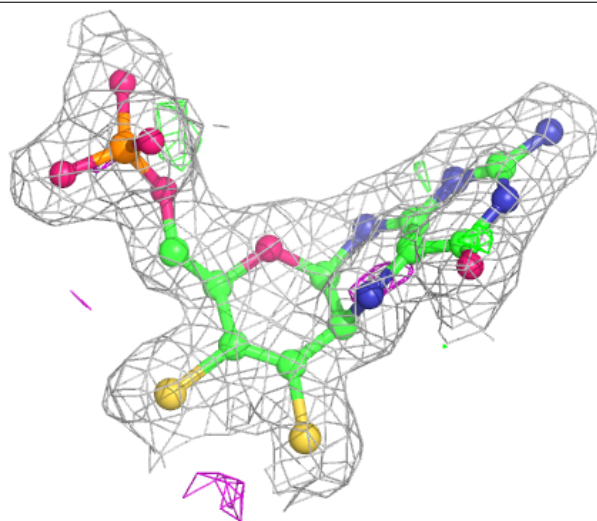
Continued from previous page...

Mol	Type	Chain	Res	Atoms	RSCC	RSR	B-factors(\AA^2)	Q<0.9
2	SO4	B	8504	5/5	0.96	0.15	63,63,64,64	0
2	SO4	A	7503	5/5	0.97	0.08	35,37,39,40	0
3	MTE	A	1501	24/24	0.98	0.10	13,15,17,18	0
3	MTE	B	4501	24/24	0.98	0.10	14,16,17,18	0
2	SO4	B	8503	5/5	0.98	0.07	32,33,37,37	0
4	MO	A	2501	1/1	1.00	0.04	18,18,18,18	0
4	MO	B	5501	1/1	1.00	0.05	18,18,18,18	0

The following is a graphical depiction of the model fit to experimental electron density of all instances of the Ligand of Interest. In addition, ligands with molecular weight > 250 and outliers as shown on the geometry validation Tables will also be included. Each fit is shown from different orientation to approximate a three-dimensional view.

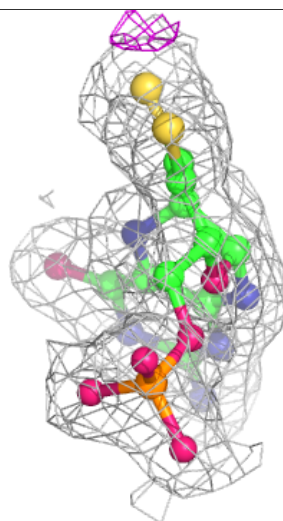
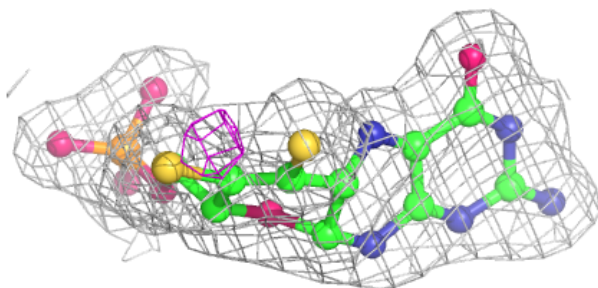
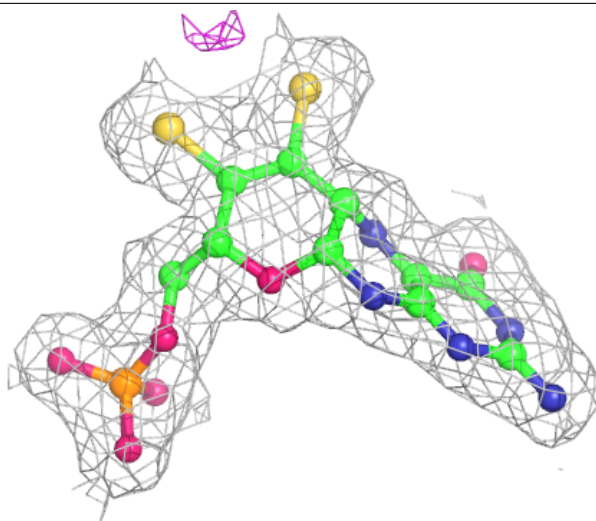
Electron density around MTE A 1501:

2mF_o-DF_c (at 0.7 rmsd) in gray
mF_o-DF_c (at 3 rmsd) in purple (negative)
and green (positive)



Electron density around MTE B 4501:

$2mF_o-DF_c$ (at 0.7 rmsd) in gray
 mF_o-DF_c (at 3 rmsd) in purple (negative)
and green (positive)



6.5 Other polymers [i](#)

There are no such residues in this entry.