



Full wwPDB X-ray Structure Validation Report ⓘ

May 25, 2020 – 09:39 am BST

PDB ID : 6AAL
Title : Crystal Structure of putative amino acid binding periplasmic ABC transporter protein from *Candidatus Liberibacter asiaticus* in complex with Arginine
Authors : Kumar, P.; Kesari, P.; Ghosh, D.K.; Kumar, P.; Sharma, A.K.
Deposited on : 2018-07-18
Resolution : 2.60 Å(reported)

This is a Full wwPDB X-ray Structure Validation Report for a publicly released PDB entry.

We welcome your comments at validation@mail.wwpdb.org

A user guide is available at

<https://www.wwpdb.org/validation/2017/XrayValidationReportHelp>

with specific help available everywhere you see the ⓘ symbol.

The following versions of software and data (see [references ⓘ](#)) were used in the production of this report:

MolProbity : 4.02b-467
Mogul : 1.8.5 (274361), CSD as541be (2020)
Xtriage (Phenix) : 1.13
EDS : 2.11
Percentile statistics : 20191225.v01 (using entries in the PDB archive December 25th 2019)
Refmac : 5.8.0158
CCP4 : 7.0.044 (Gargrove)
Ideal geometry (proteins) : Engh & Huber (2001)
Ideal geometry (DNA, RNA) : Parkinson et al. (1996)
Validation Pipeline (wwPDB-VP) : 2.11

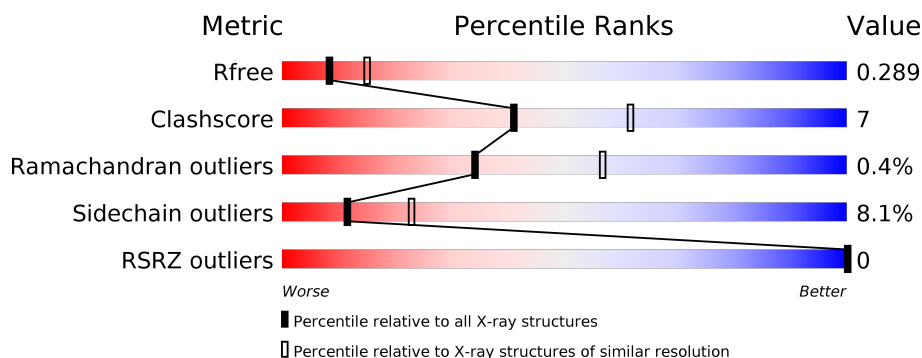
1 Overall quality at a glance ⓘ

The following experimental techniques were used to determine the structure:

X-RAY DIFFRACTION

The reported resolution of this entry is 2.60 Å.

Percentile scores (ranging between 0-100) for global validation metrics of the entry are shown in the following graphic. The table shows the number of entries on which the scores are based.



Metric	Whole archive (#Entries)	Similar resolution (#Entries, resolution range(Å))
R_{free}	130704	3163 (2.60-2.60)
Clashscore	141614	3518 (2.60-2.60)
Ramachandran outliers	138981	3455 (2.60-2.60)
Sidechain outliers	138945	3455 (2.60-2.60)
RSRZ outliers	127900	3104 (2.60-2.60)

The table below summarises the geometric issues observed across the polymeric chains and their fit to the electron density. The red, orange, yellow and green segments on the lower bar indicate the fraction of residues that contain outliers for ≥ 3 , 2, 1 and 0 types of geometric quality criteria respectively. A grey segment represents the fraction of residues that are not modelled. The numeric value for each fraction is indicated below the corresponding segment, with a dot representing fractions $\leq 5\%$. The upper red bar (where present) indicates the fraction of residues that have poor fit to the electron density. The numeric value is given above the bar.

Mol	Chain	Length	Quality of chain
1	A	241	<div> <div style="width: 100%; height: 10px; background: linear-gradient(to right, red, orange, yellow, green, grey);"></div> <div style="display: flex; justify-content: space-between; width: 100%;"> 75% 21% • • </div> </div>
1	B	241	<div> <div style="width: 100%; height: 10px; background: linear-gradient(to right, red, orange, yellow, green, grey);"></div> <div style="display: flex; justify-content: space-between; width: 100%;"> 74% 20% • • </div> </div>

2 Entry composition [i](#)

There are 6 unique types of molecules in this entry. The entry contains 3944 atoms, of which 0 are hydrogens and 0 are deuteriums.

In the tables below, the ZeroOcc column contains the number of atoms modelled with zero occupancy, the AltConf column contains the number of residues with at least one atom in alternate conformation and the Trace column contains the number of residues modelled with at most 2 atoms.

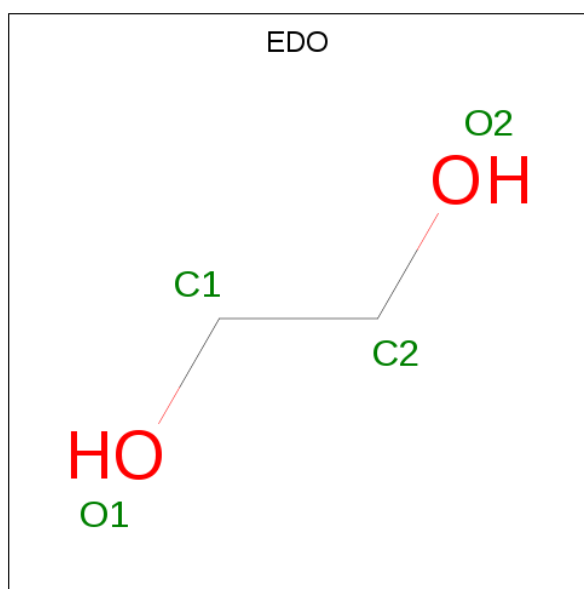
- Molecule 1 is a protein called Putative amino acid-binding periplasmic ABC transporter protein.

Mol	Chain	Residues	Atoms					ZeroOcc	AltConf	Trace
1	A	234	Total	C	N	O	S	0	1	0
			1888	1202	333	347	6			
1	B	234	Total	C	N	O	S	0	0	0
			1880	1196	332	346	6			

There are 2 discrepancies between the modelled and reference sequences:

Chain	Residue	Modelled	Actual	Comment	Reference
A	1	MET	-	initiating methionine	UNP C6XGT2
B	1	MET	-	initiating methionine	UNP C6XGT2

- Molecule 2 is 1,2-ETHANEDIOL (three-letter code: EDO) (formula: C₂H₆O₂).



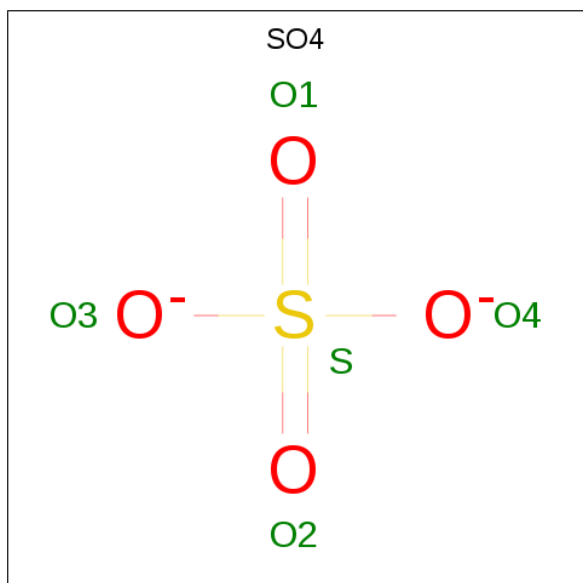
Mol	Chain	Residues	Atoms			ZeroOcc	AltConf
2	A	1	Total	C	O	0	0
			4	2	2		

Continued on next page...

Continued from previous page...

Mol	Chain	Residues	Atoms			ZeroOcc	AltConf
2	A	1	Total	C	O	0	0
			4	2	2		
2	A	1	Total	C	O	0	0
			4	2	2		
2	A	1	Total	C	O	0	0
			4	2	2		
2	A	1	Total	C	O	0	0
			4	2	2		
2	A	1	Total	C	O	0	0
			4	2	2		
2	A	1	Total	C	O	0	0
			4	2	2		
2	B	1	Total	C	O	0	0
			4	2	2		

- Molecule 3 is SULFATE ION (three-letter code: SO4) (formula: O₄S).



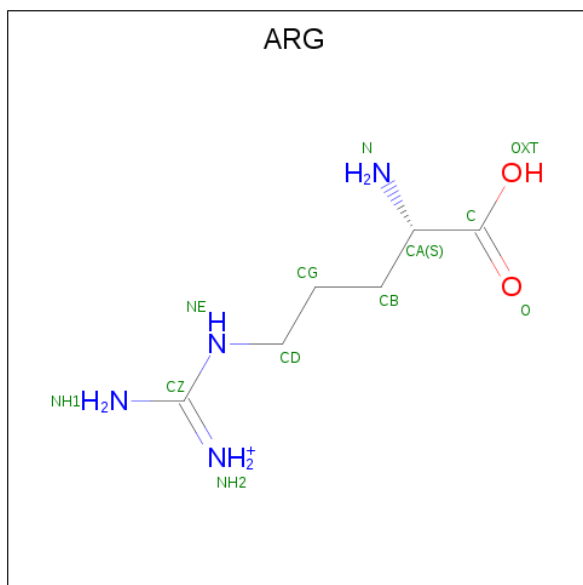
Mol	Chain	Residues	Atoms			ZeroOcc	AltConf
3	A	1	Total	O	S	0	0
			5	4	1		

Continued on next page...

Continued from previous page...

Mol	Chain	Residues	Atoms			ZeroOcc	AltConf
3	A	1	Total	O	S	0	0
			5	4	1		
3	B	1	Total	O	S	0	0
			5	4	1		
3	B	1	Total	O	S	0	0
			5	4	1		

- Molecule 4 is ARGinine (three-letter code: ARG) (formula: $C_6H_{15}N_4O_2$).



Mol	Chain	Residues	Atoms				ZeroOcc	AltConf
4	A	1	Total	C	N	O	0	0
			12	6	4	2		

- Molecule 5 is ACETATE ION (three-letter code: ACT) (formula: $C_2H_3O_2$).



Mol	Chain	Residues	Atoms			ZeroOcc	AltConf
5	A	1	Total	C	O	0	0
			4	2	2		
5	B	1	Total	C	O	0	0
			4	2	2		
5	B	1	Total	C	O	0	0
			4	2	2		
5	B	1	Total	C	O	0	0
			4	2	2		
5	B	1	Total	C	O	0	0
			4	2	2		

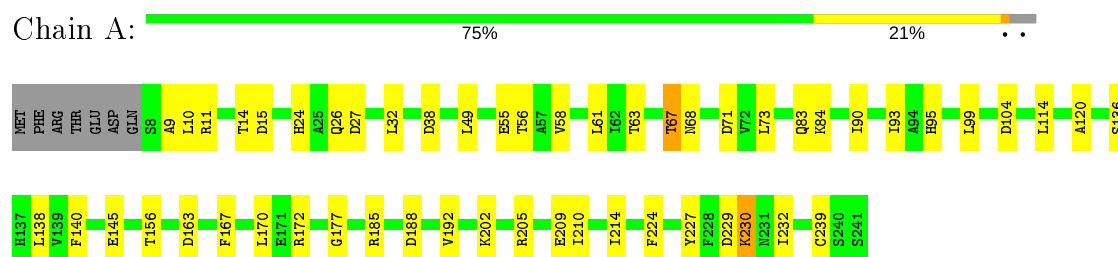
- Molecule 6 is water.

Mol	Chain	Residues	Atoms		ZeroOcc	AltConf
6	A	41	Total	O	0	0
			41	41		
6	B	39	Total	O	0	0
			39	39		

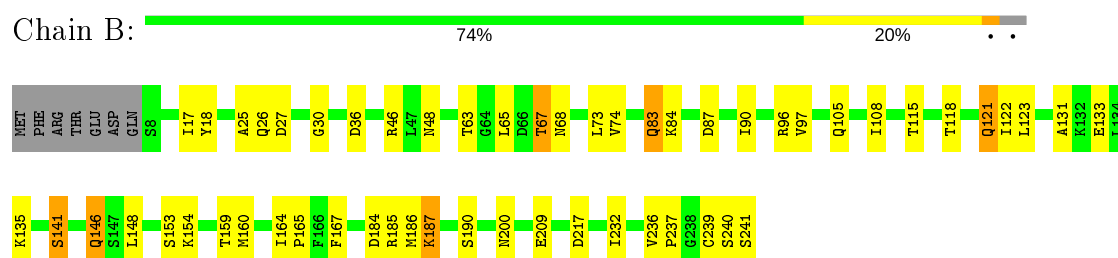
3 Residue-property plots [i](#)

These plots are drawn for all protein, RNA and DNA chains in the entry. The first graphic for a chain summarises the proportions of the various outlier classes displayed in the second graphic. The second graphic shows the sequence view annotated by issues in geometry and electron density. Residues are color-coded according to the number of geometric quality criteria for which they contain at least one outlier: green = 0, yellow = 1, orange = 2 and red = 3 or more. A red dot above a residue indicates a poor fit to the electron density ($RSRZ > 2$). Stretches of 2 or more consecutive residues without any outlier are shown as a green connector. Residues present in the sample, but not in the model, are shown in grey.

- Molecule 1: Putative amino acid-binding periplasmic ABC transporter protein



- Molecule 1: Putative amino acid-binding periplasmic ABC transporter protein



4 Data and refinement statistics

Property	Value	Source
Space group	P 21 21 21	Depositor
Cell constants a, b, c, α , β , γ	46.34Å 86.00Å 123.83Å 90.00° 90.00° 90.00°	Depositor
Resolution (Å)	70.64 – 2.60 43.40 – 2.60	Depositor EDS
% Data completeness (in resolution range)	98.7 (70.64-2.60) 98.8 (43.40-2.60)	Depositor EDS
R_{merge}	(Not available)	Depositor
R_{sym}	0.15	Depositor
$\langle I/\sigma(I) \rangle$ ¹	1.63 (at 2.61Å)	Xtriage
Refinement program	REFMAC 5.8.0218	Depositor
R, R_{free}	0.200 , 0.290 0.205 , 0.289	Depositor DCC
R_{free} test set	827 reflections (5.29%)	wwPDB-VP
Wilson B-factor (Å ²)	41.5	Xtriage
Anisotropy	0.067	Xtriage
Bulk solvent k_{sol} (e/Å ³), B_{sol} (Å ²)	0.33 , 34.6	EDS
L-test for twinning ²	$\langle L \rangle = 0.47$, $\langle L^2 \rangle = 0.30$	Xtriage
Estimated twinning fraction	No twinning to report.	Xtriage
F_o, F_c correlation	0.94	EDS
Total number of atoms	3944	wwPDB-VP
Average B, all atoms (Å ²)	41.0	wwPDB-VP

Xtriage's analysis on translational NCS is as follows: *The largest off-origin peak in the Patterson function is 6.39% of the height of the origin peak. No significant pseudotranslation is detected.*

¹Intensities estimated from amplitudes.

²Theoretical values of $\langle |L| \rangle$, $\langle L^2 \rangle$ for acentric reflections are 0.5, 0.333 respectively for untwinned datasets, and 0.375, 0.2 for perfectly twinned datasets.

5 Model quality [i](#)

5.1 Standard geometry [i](#)

Bond lengths and bond angles in the following residue types are not validated in this section: ACT, EDO, SO4

The Z score for a bond length (or angle) is the number of standard deviations the observed value is removed from the expected value. A bond length (or angle) with $|Z| > 5$ is considered an outlier worth inspection. RMSZ is the root-mean-square of all Z scores of the bond lengths (or angles).

Mol	Chain	Bond lengths		Bond angles	
		RMSZ	$\# Z > 5$	RMSZ	$\# Z > 5$
1	A	0.61	0/1925	0.82	0/2596
1	B	0.64	0/1917	0.80	1/2585 (0.0%)
All	All	0.63	0/3842	0.81	1/5181 (0.0%)

Chiral center outliers are detected by calculating the chiral volume of a chiral center and verifying if the center is modelled as a planar moiety or with the opposite hand. A planarity outlier is detected by checking planarity of atoms in a peptide group, atoms in a mainchain group or atoms of a sidechain that are expected to be planar.

Mol	Chain	#Chirality outliers	#Planarity outliers
1	B	0	1

There are no bond length outliers.

All (1) bond angle outliers are listed below:

Mol	Chain	Res	Type	Atoms	Z	Observed($^{\circ}$)	Ideal($^{\circ}$)
1	B	135	LYS	N-CA-C	-5.21	96.94	111.00

There are no chirality outliers.

All (1) planarity outliers are listed below:

Mol	Chain	Res	Type	Group
1	B	133	GLU	Peptide

5.2 Too-close contacts [i](#)

In the following table, the Non-H and H(model) columns list the number of non-hydrogen atoms and hydrogen atoms in the chain respectively. The H(added) column lists the number of hydrogen atoms added and optimized by MolProbity. The Clashes column lists the number of clashes within

the asymmetric unit, whereas Symm-Clashes lists symmetry related clashes.

Mol	Chain	Non-H	H(model)	H(added)	Clashes	Symm-Clashes
1	A	1888	0	1900	28	0
1	B	1880	0	1890	31	0
2	A	40	0	60	3	0
2	B	4	0	6	0	0
3	A	10	0	0	0	0
3	B	10	0	0	0	0
4	A	12	0	12	2	0
5	A	4	0	3	0	0
5	B	16	0	12	1	0
6	A	41	0	0	0	0
6	B	39	0	0	0	0
All	All	3944	0	3883	55	0

The all-atom clashscore is defined as the number of clashes found per 1000 atoms (including hydrogen atoms). The all-atom clashscore for this structure is 7.

All (55) close contacts within the same asymmetric unit are listed below, sorted by their clash magnitude.

Atom-1	Atom-2	Interatomic distance (Å)	Clash overlap (Å)
1:A:63:THR:O	1:A:67:THR:HG23	1.73	0.86
1:B:25:ALA:HB3	1:B:30:GLY:HA3	1.67	0.75
1:B:131:ALA:HB2	1:B:160:MET:HE1	1.69	0.74
1:B:63:THR:O	1:B:67:THR:HB	1.93	0.69
1:A:14:THR:O	1:A:55:GLU:HA	1.97	0.64
1:A:11:ARG:NH2	1:A:71:ASP:OD2	2.34	0.61
1:A:84:LYS:HE3	1:B:209:GLU:OE1	2.02	0.60
1:A:63:THR:O	1:A:67:THR:CG2	2.49	0.58
1:A:205:ARG:NH1	1:B:87:ASP:OD1	2.37	0.58
1:A:61:LEU:HD22	1:A:73:LEU:HD21	1.85	0.57
1:B:217:ASP:C	1:B:217:ASP:OD2	2.44	0.56
1:A:120:ALA:HB2	1:A:156:THR:HG21	1.90	0.54
1:B:105:GLN:HE21	1:B:108:ILE:H	1.55	0.54
1:A:38:ASP:OD2	1:A:227:TYR:OH	2.25	0.51
1:A:145:GLU:OE1	1:A:172:ARG:NH2	2.42	0.51
1:A:224:PHE:CE2	1:A:230:LYS:HG3	2.46	0.51
1:A:10:LEU:HB2	1:A:49:LEU:HD13	1.93	0.50
1:B:90:ILE:HG21	5:B:305:ACT:H2	1.92	0.50
4:A:304:ARG:N	2:A:306:EDO:HO1	2.08	0.50
1:B:83:GLN:HA	1:B:83:GLN:HE21	1.77	0.49
1:A:84:LYS:CE	1:B:209:GLU:OE1	2.60	0.49

Continued on next page...

Continued from previous page...

Atom-1	Atom-2	Interatomic distance (Å)	Clash overlap (Å)
4:A:304:ARG:NH1	1:B:240:SER:OG	2.46	0.49
1:A:99:LEU:HD11	1:A:114:LEU:HD21	1.96	0.47
1:B:153:SER:O	1:B:154:LYS:HB2	2.14	0.47
1:B:67:THR:O	1:B:68:ASN:CB	2.62	0.46
1:A:209:GLU:OE2	1:B:84:LYS:HE2	2.16	0.46
1:A:138[B]:LEU:HD13	1:A:140:PHE:CE1	2.51	0.45
1:A:58:VAL:HG13	2:A:306:EDO:C1	2.46	0.45
1:B:105:GLN:HE21	1:B:108:ILE:N	2.14	0.45
1:B:164:ILE:HB	1:B:165:PRO:CD	2.47	0.44
1:B:122:ILE:HD12	1:B:122:ILE:N	2.32	0.44
1:B:236:VAL:HB	1:B:237:PRO:CD	2.48	0.44
1:A:170:LEU:HD22	1:A:177:GLY:HA2	1.99	0.44
1:B:184:ASP:OD1	1:B:185:ARG:N	2.46	0.44
1:B:96:ARG:NH2	1:B:187:LYS:O	2.49	0.44
1:A:24:HIS:CE1	1:A:32:LEU:HD13	2.54	0.43
1:B:83:GLN:NE2	1:B:83:GLN:HA	2.32	0.43
1:A:210:ILE:HG22	1:A:214:ILE:CD1	2.48	0.43
1:B:141:SER:OG	1:B:146:GLN:HB3	2.19	0.43
1:A:163:ASP:HB2	1:A:167:PHE:CE2	2.54	0.43
1:A:209:GLU:OE1	1:B:84:LYS:HE2	2.19	0.42
1:A:93:ILE:HG23	1:A:192:VAL:HB	2.01	0.42
1:A:58:VAL:HG13	2:A:306:EDO:H12	2.02	0.42
1:B:167:PHE:CD2	1:B:232:ILE:HG21	2.54	0.42
1:B:25:ALA:O	1:B:26:GLN:CB	2.66	0.42
1:A:15:ASP:HB2	1:A:56:THR:O	2.20	0.42
1:B:121:GLN:NE2	1:B:122:ILE:O	2.53	0.41
1:B:167:PHE:CE2	1:B:232:ILE:CG2	3.03	0.41
1:A:210:ILE:HG22	1:A:214:ILE:HD12	2.01	0.41
1:A:26:GLN:O	1:A:27:ASP:C	2.58	0.41
1:B:97:VAL:H	1:B:186:MET:HE1	1.85	0.41
1:B:46:ARG:NH2	1:B:217:ASP:OD1	2.29	0.40
1:B:167:PHE:CE2	1:B:232:ILE:HG21	2.56	0.40
1:B:65:LEU:HD12	1:B:65:LEU:HA	1.90	0.40
1:A:229:ASP:HB3	1:A:232:ILE:HG22	2.04	0.40

There are no symmetry-related clashes.

5.3 Torsion angles

5.3.1 Protein backbone

In the following table, the Percentiles column shows the percent Ramachandran outliers of the chain as a percentile score with respect to all X-ray entries followed by that with respect to entries of similar resolution.

The Analysed column shows the number of residues for which the backbone conformation was analysed, and the total number of residues.

Mol	Chain	Analysed	Favoured	Allowed	Outliers	Percentiles	
1	A	233/241 (97%)	225 (97%)	7 (3%)	1 (0%)	34	57
1	B	232/241 (96%)	219 (94%)	12 (5%)	1 (0%)	34	57
All	All	465/482 (96%)	444 (96%)	19 (4%)	2 (0%)	34	57

All (2) Ramachandran outliers are listed below:

Mol	Chain	Res	Type
1	B	200	ASN
1	A	9	ALA

5.3.2 Protein sidechains

In the following table, the Percentiles column shows the percent sidechain outliers of the chain as a percentile score with respect to all X-ray entries followed by that with respect to entries of similar resolution.

The Analysed column shows the number of residues for which the sidechain conformation was analysed, and the total number of residues.

Mol	Chain	Analysed	Rotameric	Outliers	Percentiles	
1	A	210/216 (97%)	198 (94%)	12 (6%)	20	41
1	B	209/216 (97%)	188 (90%)	21 (10%)	7	14
All	All	419/432 (97%)	386 (92%)	33 (8%)	11	24

All (33) residues with a non-rotameric sidechain are listed below:

Mol	Chain	Res	Type
1	A	67	THR
1	A	68	ASN
1	A	83	GLN
1	A	90	ILE

Continued on next page...

Continued from previous page...

Mol	Chain	Res	Type
1	A	95	HIS
1	A	104	ASP
1	A	136	SER
1	A	185	ARG
1	A	188	ASP
1	A	202	LYS
1	A	230	LYS
1	A	239	CYS
1	B	17	ILE
1	B	18	TYR
1	B	27	ASP
1	B	36	ASP
1	B	48	ASN
1	B	67	THR
1	B	73	LEU
1	B	74	VAL
1	B	83	GLN
1	B	115	THR
1	B	118	THR
1	B	121	GLN
1	B	123	LEU
1	B	141	SER
1	B	146	GLN
1	B	148	LEU
1	B	159	THR
1	B	187	LYS
1	B	190	SER
1	B	239	CYS
1	B	241	SER

Some sidechains can be flipped to improve hydrogen bonding and reduce clashes. All (1) such sidechains are listed below:

Mol	Chain	Res	Type
1	B	105	GLN

5.3.3 RNA ⓘ

There are no RNA molecules in this entry.

5.4 Non-standard residues in protein, DNA, RNA chains [i](#)

There are no non-standard protein/DNA/RNA residues in this entry.

5.5 Carbohydrates [i](#)

There are no carbohydrates in this entry.

5.6 Ligand geometry [i](#)

21 ligands are modelled in this entry.

In the following table, the Counts columns list the number of bonds (or angles) for which Mogul statistics could be retrieved, the number of bonds (or angles) that are observed in the model and the number of bonds (or angles) that are defined in the Chemical Component Dictionary. The Link column lists molecule types, if any, to which the group is linked. The Z score for a bond length (or angle) is the number of standard deviations the observed value is removed from the expected value. A bond length (or angle) with $|Z| > 2$ is considered an outlier worth inspection. RMSZ is the root-mean-square of all Z scores of the bond lengths (or angles).

Mol	Type	Chain	Res	Link	Bond lengths			Bond angles		
					Counts	RMSZ	$\# Z > 2$	Counts	RMSZ	$\# Z > 2$
2	EDO	A	309	-	3,3,3	0.41	0	2,2,2	0.49	0
3	SO4	A	303	-	4,4,4	0.50	0	6,6,6	0.27	0
2	EDO	A	305	-	3,3,3	0.51	0	2,2,2	0.12	0
3	SO4	A	302	-	4,4,4	0.39	0	6,6,6	0.40	0
5	ACT	B	306	-	1,3,3	2.03	1 (100%)	0,3,3	0.00	-
2	EDO	A	301	-	3,3,3	0.51	0	2,2,2	0.45	0
2	EDO	A	308	-	3,3,3	0.37	0	2,2,2	0.39	0
5	ACT	A	314	-	1,3,3	2.50	1 (100%)	0,3,3	0.00	-
3	SO4	B	301	-	4,4,4	0.53	0	6,6,6	0.63	0
5	ACT	B	307	-	1,3,3	2.99	1 (100%)	0,3,3	0.00	-
2	EDO	B	303	-	3,3,3	0.57	0	2,2,2	0.21	0
5	ACT	B	305	-	1,3,3	2.17	1 (100%)	0,3,3	0.00	-
2	EDO	A	313	-	3,3,3	0.70	0	2,2,2	0.06	0
5	ACT	B	304	-	1,3,3	2.14	1 (100%)	0,3,3	0.00	-
2	EDO	A	307	-	3,3,3	0.36	0	2,2,2	0.52	0
3	SO4	B	302	-	4,4,4	0.54	0	6,6,6	0.39	0
2	EDO	A	306	-	3,3,3	0.48	0	2,2,2	0.36	0
2	EDO	A	310	-	3,3,3	0.69	0	2,2,2	0.07	0
2	EDO	A	312	-	3,3,3	0.51	0	2,2,2	0.41	0
2	EDO	A	311	-	3,3,3	0.34	0	2,2,2	0.52	0

In the following table, the Chirals column lists the number of chiral outliers, the number of chiral centers analysed, the number of these observed in the model and the number defined in the Chemical Component Dictionary. Similar counts are reported in the Torsion and Rings columns. '-' means no outliers of that kind were identified.

Mol	Type	Chain	Res	Link	Chirals	Torsions	Rings
2	EDO	A	309	-	-	1/1/1/1	-
2	EDO	A	305	-	-	1/1/1/1	-
2	EDO	A	301	-	-	1/1/1/1	-
2	EDO	A	308	-	-	0/1/1/1	-
2	EDO	B	303	-	-	0/1/1/1	-
2	EDO	A	313	-	-	1/1/1/1	-
2	EDO	A	307	-	-	1/1/1/1	-
2	EDO	A	306	-	-	1/1/1/1	-
2	EDO	A	310	-	-	1/1/1/1	-
2	EDO	A	312	-	-	0/1/1/1	-
2	EDO	A	311	-	-	0/1/1/1	-

All (5) bond length outliers are listed below:

Mol	Chain	Res	Type	Atoms	Z	Observed(Å)	Ideal(Å)
5	B	307	ACT	CH3-C	2.99	1.52	1.48
5	A	314	ACT	CH3-C	2.50	1.51	1.48
5	B	305	ACT	CH3-C	2.17	1.51	1.48
5	B	304	ACT	CH3-C	2.14	1.51	1.48
5	B	306	ACT	CH3-C	2.03	1.51	1.48

There are no bond angle outliers.

There are no chirality outliers.

All (7) torsion outliers are listed below:

Mol	Chain	Res	Type	Atoms
2	A	309	EDO	O1-C1-C2-O2
2	A	305	EDO	O1-C1-C2-O2
2	A	313	EDO	O1-C1-C2-O2
2	A	307	EDO	O1-C1-C2-O2
2	A	306	EDO	O1-C1-C2-O2
2	A	310	EDO	O1-C1-C2-O2
2	A	301	EDO	O1-C1-C2-O2

There are no ring outliers.

2 monomers are involved in 4 short contacts:

Mol	Chain	Res	Type	Clashes	Symm-Clashes
5	B	305	ACT	1	0
2	A	306	EDO	3	0

5.7 Other polymers [i](#)

There are no such residues in this entry.

5.8 Polymer linkage issues [i](#)

There are no chain breaks in this entry.

6 Fit of model and data [i](#)

6.1 Protein, DNA and RNA chains [i](#)

In the following table, the column labelled ‘#RSRZ> 2’ contains the number (and percentage) of RSRZ outliers, followed by percent RSRZ outliers for the chain as percentile scores relative to all X-ray entries and entries of similar resolution. The OWAB column contains the minimum, median, 95th percentile and maximum values of the occupancy-weighted average B-factor per residue. The column labelled ‘Q< 0.9’ lists the number of (and percentage) of residues with an average occupancy less than 0.9.

Mol	Chain	Analysed	<RSRZ>	#RSRZ>2	OWAB(Å ²)	Q<0.9
1	A	234/241 (97%)	-0.48	0 100 100	26, 38, 61, 74	0
1	B	234/241 (97%)	-0.47	0 100 100	24, 38, 64, 77	0
All	All	468/482 (97%)	-0.48	0 100 100	24, 38, 62, 77	0

There are no RSRZ outliers to report.

6.2 Non-standard residues in protein, DNA, RNA chains [i](#)

There are no non-standard protein/DNA/RNA residues in this entry.

6.3 Carbohydrates [i](#)

There are no carbohydrates in this entry.

6.4 Ligands [i](#)

In the following table, the Atoms column lists the number of modelled atoms in the group and the number defined in the chemical component dictionary. The B-factors column lists the minimum, median, 95th percentile and maximum values of B factors of atoms in the group. The column labelled ‘Q< 0.9’ lists the number of atoms with occupancy less than 0.9.

Mol	Type	Chain	Res	Atoms	RSCC	RSR	B-factors(Å ²)	Q<0.9
2	EDO	A	305	4/4	0.77	0.26	55,57,60,63	0
2	EDO	B	303	4/4	0.82	0.19	60,65,66,66	0
2	EDO	A	310	4/4	0.82	0.26	48,49,51,51	0
2	EDO	A	313	4/4	0.84	0.18	45,48,48,49	0
3	SO4	B	302	5/5	0.85	0.18	66,76,88,89	0
3	SO4	A	303	5/5	0.86	0.19	65,72,75,80	0
5	ACT	B	306	4/4	0.88	0.22	53,54,56,57	0

Continued on next page...

Continued from previous page...

Mol	Type	Chain	Res	Atoms	RSCC	RSR	B-factors(\AA^2)	Q<0.9
2	EDO	A	308	4/4	0.89	0.14	31,37,38,42	0
5	ACT	B	304	4/4	0.89	0.15	53,57,63,67	0
5	ACT	B	307	4/4	0.89	0.14	45,47,47,49	0
5	ACT	B	305	4/4	0.89	0.23	41,44,46,47	0
5	ACT	A	314	4/4	0.91	0.22	42,45,45,49	0
4	ARG	A	304	12/12	0.92	0.21	30,38,42,45	0
2	EDO	A	309	4/4	0.92	0.16	44,46,47,48	0
2	EDO	A	306	4/4	0.94	0.14	41,47,47,48	0
2	EDO	A	312	4/4	0.94	0.18	41,44,45,48	0
2	EDO	A	311	4/4	0.94	0.16	35,36,37,38	0
2	EDO	A	307	4/4	0.95	0.16	35,36,38,40	0
2	EDO	A	301	4/4	0.96	0.12	56,57,58,58	0
3	SO4	B	301	5/5	0.98	0.14	36,36,39,44	0
3	SO4	A	302	5/5	0.98	0.13	69,70,76,76	0

6.5 Other polymers [i](#)

There are no such residues in this entry.