



Full wwPDB X-ray Structure Validation Report ⓘ

Feb 15, 2021 – 06:10 PM GMT

PDB ID : 7AAE
Title : Crystal structure of Human serum albumin in complex with myristic acid at 2.27 Angstrom Resolution
Authors : Maso, L.; Liberi, S.; Trande, M.; Angelini, A.; Cendron, L.
Deposited on : 2020-09-04
Resolution : 2.27 Å(reported)

This is a Full wwPDB X-ray Structure Validation Report for a publicly released PDB entry.

We welcome your comments at validation@mail.wwpdb.org

A user guide is available at

<https://www.wwpdb.org/validation/2017/XrayValidationReportHelp>

with specific help available everywhere you see the ⓘ symbol.

The following versions of software and data (see [references ⓘ](#)) were used in the production of this report:

MolProbity	:	4.02b-467
Mogul	:	1.8.5 (274361), CSD as541be (2020)
Xtriage (Phenix)	:	1.13
EDS	:	2.17
buster-report	:	1.1.7 (2018)
Percentile statistics	:	20191225.v01 (using entries in the PDB archive December 25th 2019)
Refmac	:	5.8.0158
CCP4	:	7.0.044 (Gargrove)
Ideal geometry (proteins)	:	Engh & Huber (2001)
Ideal geometry (DNA, RNA)	:	Parkinson et al. (1996)
Validation Pipeline (wwPDB-VP)	:	2.17

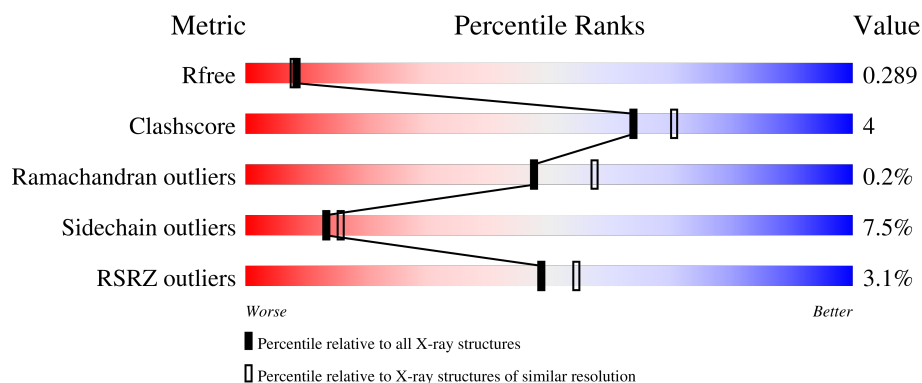
1 Overall quality at a glance

The following experimental techniques were used to determine the structure:

X-RAY DIFFRACTION


The reported resolution of this entry is 2.27 Å.

Percentile scores (ranging between 0-100) for global validation metrics of the entry are shown in the following graphic. The table shows the number of entries on which the scores are based.



Metric	Whole archive (#Entries)	Similar resolution (#Entries, resolution range(Å))
R_{free}	130704	6980 (2.30-2.26)
Clashscore	141614	7711 (2.30-2.26)
Ramachandran outliers	138981	7597 (2.30-2.26)
Sidechain outliers	138945	7598 (2.30-2.26)
RSRZ outliers	127900	6849 (2.30-2.26)

The table below summarises the geometric issues observed across the polymeric chains and their fit to the electron density. The red, orange, yellow and green segments of the lower bar indicate the fraction of residues that contain outliers for ≥ 3 , 2, 1 and 0 types of geometric quality criteria respectively. A grey segment represents the fraction of residues that are not modelled. The numeric value for each fraction is indicated below the corresponding segment, with a dot representing fractions $\leq 5\%$. The upper red bar (where present) indicates the fraction of residues that have poor fit to the electron density. The numeric value is given above the bar.

Mol	Chain	Length	Quality of chain
1	AAA	584	

2 Entry composition [i](#)

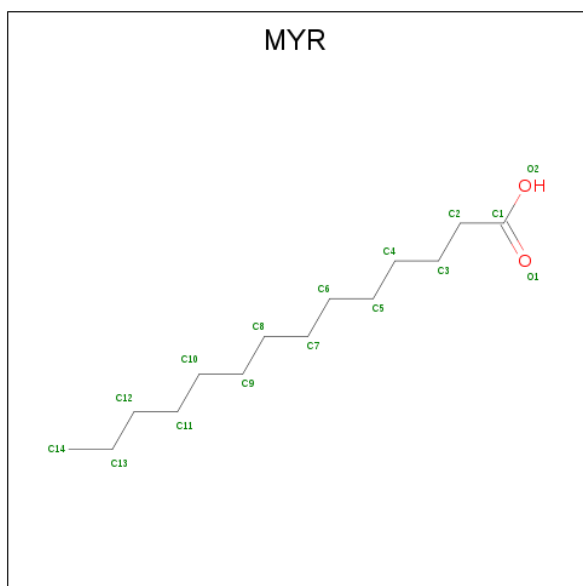
There are 6 unique types of molecules in this entry. The entry contains 4809 atoms, of which 0 are hydrogens and 0 are deuteriums.

In the tables below, the ZeroOcc column contains the number of atoms modelled with zero occupancy, the AltConf column contains the number of residues with at least one atom in alternate conformation and the Trace column contains the number of residues modelled with at most 2 atoms.

- Molecule 1 is a protein called Albumin.

Mol	Chain	Residues	Atoms					ZeroOcc	AltConf	Trace
1	AAA	581	Total	C	N	O	S	0	2	0
			4642	2933	784	884	41			

- Molecule 2 is MYRISTIC ACID (three-letter code: MYR) (formula: $C_{14}H_{28}O_2$) (labeled as "Ligand of Interest" by depositor).



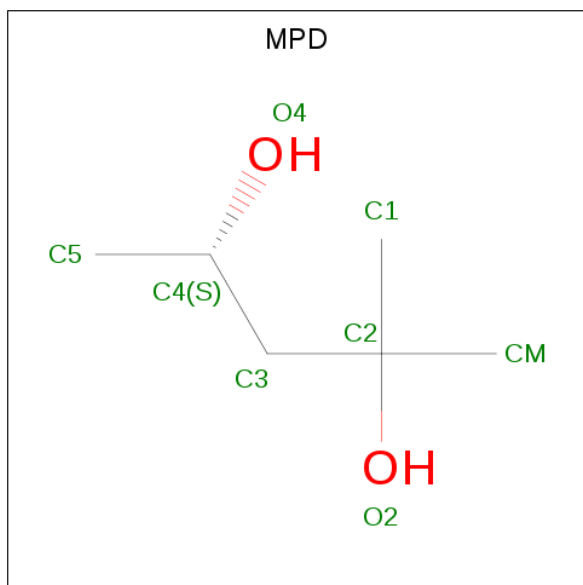
Mol	Chain	Residues	Atoms			ZeroOcc	AltConf
2	AAA	1	Total	C	O	0	0
			16	14	2		
2	AAA	1	Total	C	O	0	0
			16	14	2		
2	AAA	1	Total	C	O	0	0
			16	14	2		
2	AAA	1	Total	C	O	0	0
			16	14	2		
2	AAA	1	Total	C	O	0	0
			16	14	2		

Continued on next page...

Continued from previous page...

Mol	Chain	Residues	Atoms			ZeroOcc	AltConf
2	AAA	1	Total	C	O	0	0
			16	14	2		

- Molecule 3 is (4S)-2-METHYL-2,4-PENTANEDIOL (three-letter code: MPD) (formula: $C_6H_{14}O_2$).



Mol	Chain	Residues	Atoms			ZeroOcc	AltConf
3	AAA	1	Total	C	O	0	0
			8	6	2		
3	AAA	1	Total	C	O	0	0
			8	6	2		
3	AAA	1	Total	C	O	0	0
			8	6	2		
3	AAA	1	Total	C	O	0	0
			8	6	2		
3	AAA	1	Total	C	O	0	0
			8	6	2		

- Molecule 4 is FORMIC ACID (three-letter code: FMT) (formula: CH_2O_2).



Mol	Chain	Residues	Atoms			ZeroOcc	AltConf
4	AAA	1	Total	C	O	0	0
			3	1	2		

- Molecule 5 is PHOSPHATE ION (three-letter code: PO4) (formula: O_4P).



Mol	Chain	Residues	Atoms			ZeroOcc	AltConf
5	AAA	1	Total	O	P	0	0
			5	4	1		

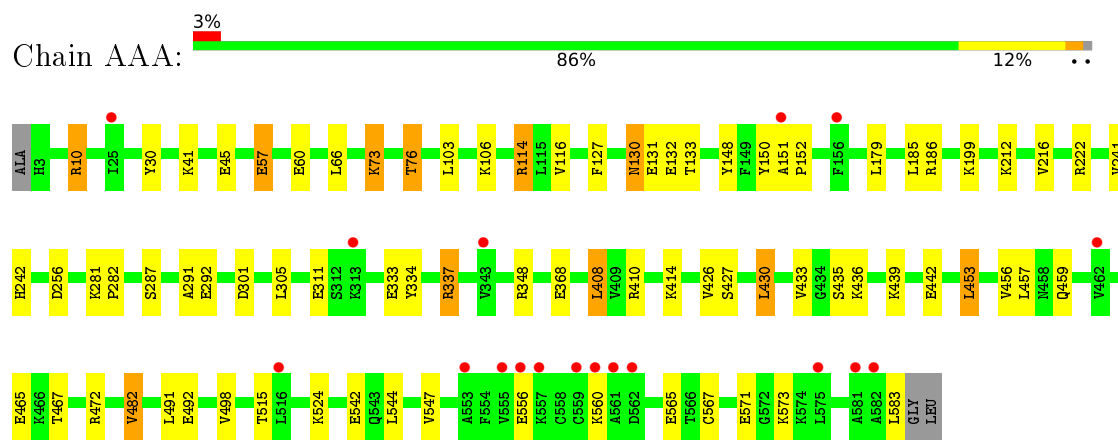
- Molecule 6 is water.

Mol	Chain	Residues	Atoms		ZeroOcc	AltConf
6	AAA	23	Total 23	O 23	0	0

3 Residue-property plots [i](#)

These plots are drawn for all protein, RNA, DNA and oligosaccharide chains in the entry. The first graphic for a chain summarises the proportions of the various outlier classes displayed in the second graphic. The second graphic shows the sequence view annotated by issues in geometry and electron density. Residues are color-coded according to the number of geometric quality criteria for which they contain at least one outlier: green = 0, yellow = 1, orange = 2 and red = 3 or more. A red dot above a residue indicates a poor fit to the electron density ($RSRZ > 2$). Stretches of 2 or more consecutive residues without any outlier are shown as a green connector. Residues present in the sample, but not in the model, are shown in grey.

- Molecule 1: Albumin



4 Data and refinement statistics

Property	Value	Source
Space group	I 1 2 1	Depositor
Cell constants a, b, c, α , β , γ	95.31Å 38.54Å 184.28Å 90.00° 104.45° 90.00°	Depositor
Resolution (Å)	29.23 – 2.27 29.21 – 2.27	Depositor EDS
% Data completeness (in resolution range)	99.5 (29.23-2.27) 99.6 (29.21-2.27)	Depositor EDS
R_{merge}	0.06	Depositor
R_{sym}	(Not available)	Depositor
$\langle I/\sigma(I) \rangle$ ¹	2.44 (at 2.26Å)	Xtriage
Refinement program	REFMAC 5.8.0258, PHENIX 1.12-2829	Depositor
R, R_{free}	0.224 , 0.291 0.222 , 0.289	Depositor DCC
R_{free} test set	1502 reflections (4.93%)	wwPDB-VP
Wilson B-factor (Å ²)	52.1	Xtriage
Anisotropy	0.079	Xtriage
Bulk solvent k_{sol} (e/Å ³), B_{sol} (Å ²)	0.31 , 33.4	EDS
L-test for twinning ²	$\langle L \rangle = 0.51$, $\langle L^2 \rangle = 0.34$	Xtriage
Estimated twinning fraction	No twinning to report.	Xtriage
F_o, F_c correlation	0.95	EDS
Total number of atoms	4809	wwPDB-VP
Average B, all atoms (Å ²)	61.0	wwPDB-VP

Xtriage's analysis on translational NCS is as follows: *The largest off-origin peak in the Patterson function is 6.26% of the height of the origin peak. No significant pseudotranslation is detected.*

¹Intensities estimated from amplitudes.

²Theoretical values of $\langle |L| \rangle$, $\langle L^2 \rangle$ for acentric reflections are 0.5, 0.333 respectively for untwinned datasets, and 0.375, 0.2 for perfectly twinned datasets.

5 Model quality [i](#)

5.1 Standard geometry [i](#)

Bond lengths and bond angles in the following residue types are not validated in this section: MPD, FMT, PO4, MYR

The Z score for a bond length (or angle) is the number of standard deviations the observed value is removed from the expected value. A bond length (or angle) with $|Z| > 5$ is considered an outlier worth inspection. RMSZ is the root-mean-square of all Z scores of the bond lengths (or angles).

Mol	Chain	Bond lengths		Bond angles	
		RMSZ	$\# Z > 5$	RMSZ	$\# Z > 5$
1	AAA	0.67	0/4733	0.78	0/6384

There are no bond length outliers.

There are no bond angle outliers.

There are no chirality outliers.

There are no planarity outliers.

5.2 Too-close contacts [i](#)

In the following table, the Non-H and H(model) columns list the number of non-hydrogen atoms and hydrogen atoms in the chain respectively. The H(added) column lists the number of hydrogen atoms added and optimized by MolProbity. The Clashes column lists the number of clashes within the asymmetric unit, whereas Symm-Clashes lists symmetry-related clashes.

Mol	Chain	Non-H	H(model)	H(added)	Clashes	Symm-Clashes
1	AAA	4642	0	4558	39	0
2	AAA	96	0	162	4	0
3	AAA	40	0	70	4	0
4	AAA	3	0	1	0	0
5	AAA	5	0	0	0	0
6	AAA	23	0	0	1	0
All	All	4809	0	4791	40	0

The all-atom clashscore is defined as the number of clashes found per 1000 atoms (including hydrogen atoms). The all-atom clashscore for this structure is 4.

All (40) close contacts within the same asymmetric unit are listed below, sorted by their clash magnitude.

Atom-1	Atom-2	Interatomic distance (Å)	Clash overlap (Å)
1:AAA:10:ARG:HD2	1:AAA:66:LEU:CD1	2.07	0.84
1:AAA:498:VAL:HG23	6:AAA:704:HOH:O	1.88	0.73
1:AAA:10:ARG:HD2	1:AAA:66:LEU:HD11	1.74	0.68
1:AAA:41:LYS:HD3	1:AAA:45:GLU:OE1	1.94	0.68
1:AAA:305:LEU:HD11	1:AAA:337:ARG:HD2	1.77	0.67
1:AAA:472:ARG:NH2	1:AAA:492:GLU:O	2.29	0.66
1:AAA:433:VAL:HG11	1:AAA:453:LEU:HD13	1.80	0.62
1:AAA:148:TYR:O	3:AAA:609:MPD:H11	2.01	0.60
1:AAA:547:VAL:HG21	1:AAA:583:LEU:HD11	1.86	0.58
1:AAA:130:ASN:HB2	1:AAA:133:THR:HB	1.86	0.57
1:AAA:348:ARG:HG3	1:AAA:482:VAL:HG22	1.88	0.56
1:AAA:66:LEU:CD2	2:AAA:602:MYR:H143	2.35	0.56
1:AAA:430:LEU:HD13	1:AAA:456:VAL:HG11	1.86	0.55
1:AAA:45:GLU:OE2	1:AAA:73:LYS:NZ	2.40	0.54
1:AAA:73:LYS:O	1:AAA:76:THR:HB	2.11	0.51
1:AAA:10:ARG:HD2	1:AAA:66:LEU:HD13	1.91	0.51
1:AAA:222:ARG:NH1	1:AAA:291:ALA:O	2.44	0.50
1:AAA:414:LYS:NZ	1:AAA:491:LEU:O	2.46	0.49
1:AAA:10:ARG:CD	1:AAA:66:LEU:CD1	2.85	0.48
1:AAA:114:ARG:NH1	1:AAA:116:VAL:HG12	2.28	0.48
1:AAA:348:ARG:HH22	2:AAA:606:MYR:C1	2.28	0.46
1:AAA:66:LEU:HD22	2:AAA:602:MYR:H143	1.96	0.46
1:AAA:333:GLU:O	1:AAA:337:ARG:HG3	2.17	0.45
1:AAA:287:SER:OG	2:AAA:602:MYR:O2	2.30	0.44
1:AAA:150:TYR:HA	3:AAA:609:MPD:H12	1.99	0.44
3:AAA:609:MPD:H12	3:AAA:609:MPD:H53	2.00	0.43
1:AAA:212:LYS:O	1:AAA:216:VAL:HG23	2.19	0.43
1:AAA:241:VAL:HG22	1:AAA:256:ASP:HB3	2.01	0.43
1:AAA:281:LYS:HB3	1:AAA:282:PRO:HD2	2.01	0.42
1:AAA:199:LYS:HB3	1:AAA:242:HIS:CE1	2.55	0.42
1:AAA:10:ARG:CD	1:AAA:66:LEU:HD13	2.50	0.42
1:AAA:410:ARG:HG2	1:AAA:414:LYS:HD2	2.01	0.41
1:AAA:426:VAL:HG12	1:AAA:430:LEU:HD22	2.03	0.41
1:AAA:305:LEU:HD11	1:AAA:337:ARG:CD	2.49	0.41
1:AAA:150:TYR:HA	3:AAA:609:MPD:C1	2.51	0.41
1:AAA:151:ALA:HB3	1:AAA:152:PRO:HD3	2.03	0.41
1:AAA:408:LEU:HD13	1:AAA:427:SER:CB	2.51	0.41
1:AAA:567:CYS:O	1:AAA:571:GLU:HB2	2.20	0.41
1:AAA:30:TYR:CZ	1:AAA:106:LYS:HE3	2.55	0.40
1:AAA:127:PHE:CE1	1:AAA:131:GLU:HG3	2.56	0.40

There are no symmetry-related clashes.

5.3 Torsion angles [i](#)

5.3.1 Protein backbone [i](#)

In the following table, the Percentiles column shows the percent Ramachandran outliers of the chain as a percentile score with respect to all X-ray entries followed by that with respect to entries of similar resolution.

The Analysed column shows the number of residues for which the backbone conformation was analysed, and the total number of residues.

Mol	Chain	Analysed	Favoured	Allowed	Outliers	Percentiles
1	AAA	581/584 (100%)	559 (96%)	21 (4%)	1 (0%)	47 57

All (1) Ramachandran outliers are listed below:

Mol	Chain	Res	Type
1	AAA	57	GLU

5.3.2 Protein sidechains [i](#)

In the following table, the Percentiles column shows the percent sidechain outliers of the chain as a percentile score with respect to all X-ray entries followed by that with respect to entries of similar resolution.

The Analysed column shows the number of residues for which the sidechain conformation was analysed, and the total number of residues.

Mol	Chain	Analysed	Rotameric	Outliers	Percentiles
1	AAA	510/510 (100%)	472 (92%)	38 (8%)	13 16

All (38) residues with a non-rotameric sidechain are listed below:

Mol	Chain	Res	Type
1	AAA	10	ARG
1	AAA	57	GLU
1	AAA	60	GLU
1	AAA	73	LYS
1	AAA	76	THR
1	AAA	103	LEU
1	AAA	114	ARG
1	AAA	130	ASN
1	AAA	132	GLU
1	AAA	179	LEU

Continued on next page...

Continued from previous page...

Mol	Chain	Res	Type
1	AAA	185	LEU
1	AAA	186	ARG
1	AAA	292	GLU
1	AAA	301	ASP
1	AAA	311	GLU
1	AAA	334	TYR
1	AAA	337	ARG
1	AAA	368	GLU
1	AAA	408	LEU
1	AAA	430	LEU
1	AAA	435	SER
1	AAA	436	LYS
1	AAA	439	LYS
1	AAA	442	GLU
1	AAA	453	LEU
1	AAA	457	LEU
1	AAA	459	GLN
1	AAA	465	GLU
1	AAA	467	THR
1	AAA	482	VAL
1	AAA	515	THR
1	AAA	524	LYS
1	AAA	542	GLU
1	AAA	544	LEU
1	AAA	556	GLU
1	AAA	560	LYS
1	AAA	565	GLU
1	AAA	573	LYS

Sometimes sidechains can be flipped to improve hydrogen bonding and reduce clashes. There are no such sidechains identified.

5.3.3 RNA ⓘ

There are no RNA molecules in this entry.

5.4 Non-standard residues in protein, DNA, RNA chains ⓘ

There are no non-standard protein/DNA/RNA residues in this entry.

5.5 Carbohydrates [i](#)

There are no monosaccharides in this entry.

5.6 Ligand geometry [i](#)

13 ligands are modelled in this entry.

In the following table, the Counts columns list the number of bonds (or angles) for which Mogul statistics could be retrieved, the number of bonds (or angles) that are observed in the model and the number of bonds (or angles) that are defined in the Chemical Component Dictionary. The Link column lists molecule types, if any, to which the group is linked. The Z score for a bond length (or angle) is the number of standard deviations the observed value is removed from the expected value. A bond length (or angle) with $|Z| > 2$ is considered an outlier worth inspection. RMSZ is the root-mean-square of all Z scores of the bond lengths (or angles).

Mol	Type	Chain	Res	Link	Bond lengths			Bond angles		
					Counts	RMSZ	# Z > 2	Counts	RMSZ	# Z > 2
2	MYR	AAA	605	-	12,15,15	0.28	0	11,15,15	0.38	0
5	PO4	AAA	613	-	4,4,4	1.50	1 (25%)	6,6,6	1.26	1 (16%)
2	MYR	AAA	604	-	12,15,15	0.28	0	11,15,15	0.66	0
2	MYR	AAA	606	-	12,15,15	0.24	0	11,15,15	0.71	0
3	MPD	AAA	608	-	7,7,7	0.23	0	9,10,10	0.69	0
3	MPD	AAA	609	-	7,7,7	0.39	0	9,10,10	0.95	0
3	MPD	AAA	610	-	7,7,7	0.37	0	9,10,10	1.49	2 (22%)
3	MPD	AAA	611	-	7,7,7	0.40	0	9,10,10	0.77	0
4	FMT	AAA	612	-	0,2,2	0.00	-	0,1,1	0.00	-
2	MYR	AAA	602	-	12,15,15	0.48	0	11,15,15	0.60	0
2	MYR	AAA	601	-	12,15,15	0.28	0	11,15,15	0.64	0
2	MYR	AAA	603	-	12,15,15	0.33	0	11,15,15	0.32	0
3	MPD	AAA	607	-	7,7,7	0.42	0	9,10,10	0.59	0

In the following table, the Chirals column lists the number of chiral outliers, the number of chiral centers analysed, the number of these observed in the model and the number defined in the Chemical Component Dictionary. Similar counts are reported in the Torsion and Rings columns. '-' means no outliers of that kind were identified.

Mol	Type	Chain	Res	Link	Chirals	Torsions	Rings
2	MYR	AAA	605	-	-	7/11/13/13	-
2	MYR	AAA	604	-	-	1/11/13/13	-
2	MYR	AAA	606	-	-	3/11/13/13	-
3	MPD	AAA	608	-	-	3/5/5/5	-
3	MPD	AAA	609	-	-	1/5/5/5	-
3	MPD	AAA	610	-	-	0/5/5/5	-

Continued on next page...

Continued from previous page...

Mol	Type	Chain	Res	Link	Chirals	Torsions	Rings
3	MPD	AAA	611	-	-	0/5/5/5	-
2	MYR	AAA	602	-	-	4/11/13/13	-
2	MYR	AAA	601	-	-	2/11/13/13	-
2	MYR	AAA	603	-	-	8/11/13/13	-
3	MPD	AAA	607	-	-	0/5/5/5	-

All (1) bond length outliers are listed below:

Mol	Chain	Res	Type	Atoms	Z	Observed(Å)	Ideal(Å)
5	AAA	613	PO4	P-O2	-2.73	1.46	1.54

All (3) bond angle outliers are listed below:

Mol	Chain	Res	Type	Atoms	Z	Observed(°)	Ideal(°)
3	AAA	610	MPD	CM-C2-C1	-3.66	102.96	110.57
5	AAA	613	PO4	O4-P-O2	2.16	114.92	107.97
3	AAA	610	MPD	O2-C2-CM	2.03	114.60	108.08

There are no chirality outliers.

All (29) torsion outliers are listed below:

Mol	Chain	Res	Type	Atoms
2	AAA	603	MYR	C1-C2-C3-C4
2	AAA	605	MYR	C1-C2-C3-C4
2	AAA	606	MYR	C1-C2-C3-C4
3	AAA	609	MPD	C2-C3-C4-C5
2	AAA	603	MYR	C3-C4-C5-C6
2	AAA	605	MYR	C9-C10-C11-C12
2	AAA	602	MYR	C2-C3-C4-C5
2	AAA	605	MYR	C6-C7-C8-C9
2	AAA	603	MYR	C2-C3-C4-C5
2	AAA	601	MYR	C10-C11-C12-C13
2	AAA	603	MYR	C5-C6-C7-C8
2	AAA	603	MYR	C9-C10-C11-C12
2	AAA	601	MYR	C2-C3-C4-C5
2	AAA	606	MYR	C4-C5-C6-C7
2	AAA	605	MYR	C3-C4-C5-C6
3	AAA	608	MPD	C1-C2-C3-C4
2	AAA	603	MYR	C11-C10-C9-C8
2	AAA	602	MYR	C11-C10-C9-C8

Continued on next page...

Continued from previous page...

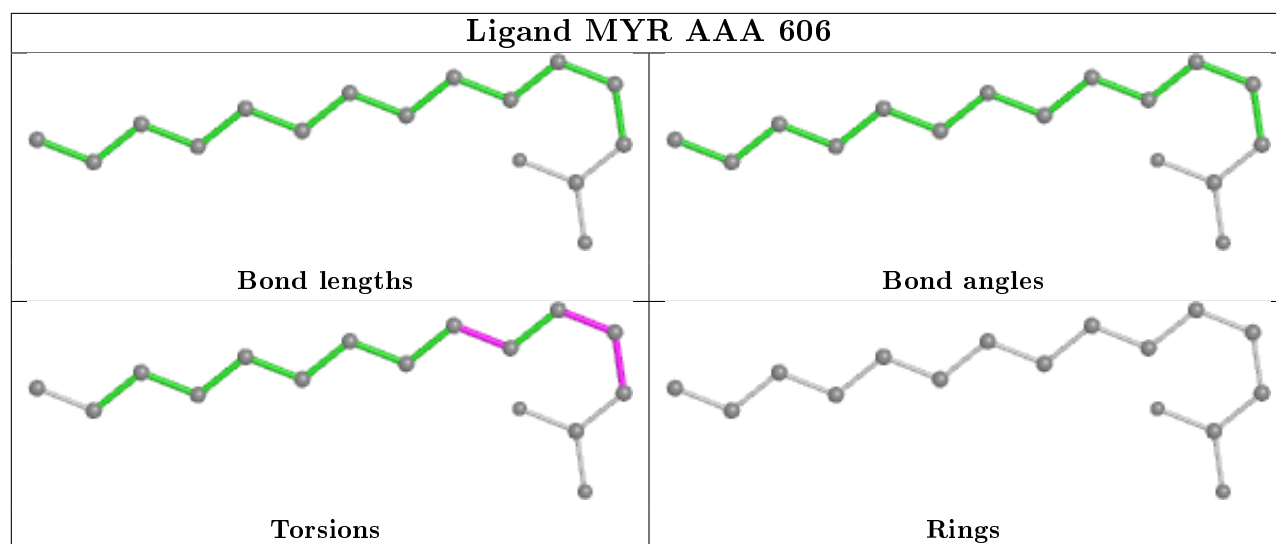
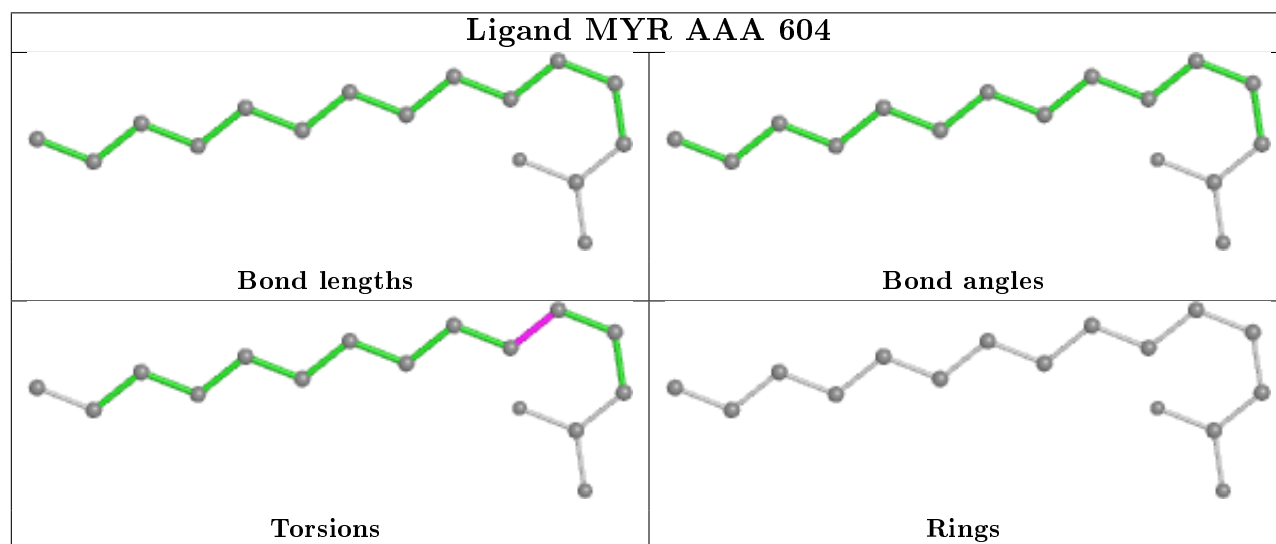
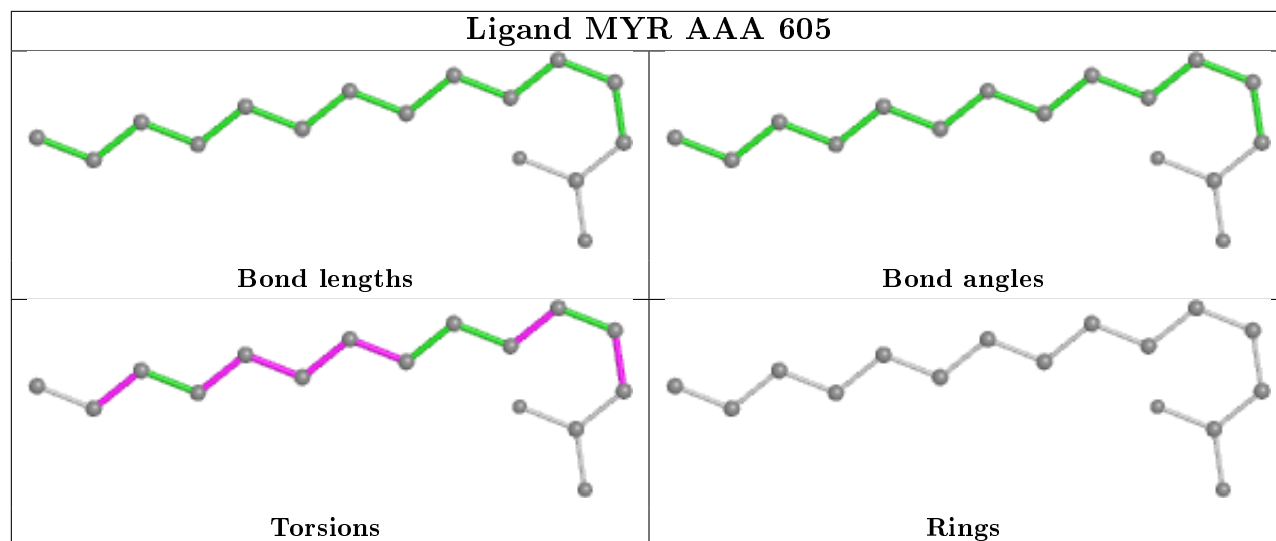
Mol	Chain	Res	Type	Atoms
2	AAA	603	MYR	C10-C11-C12-C13
2	AAA	605	MYR	C7-C8-C9-C10
2	AAA	602	MYR	C9-C10-C11-C12
2	AAA	605	MYR	C11-C10-C9-C8
2	AAA	606	MYR	C2-C3-C4-C5
2	AAA	604	MYR	C3-C4-C5-C6
2	AAA	605	MYR	C11-C12-C13-C14
2	AAA	602	MYR	C5-C6-C7-C8
3	AAA	608	MPD	O2-C2-C3-C4
2	AAA	603	MYR	C7-C8-C9-C10
3	AAA	608	MPD	C2-C3-C4-O4

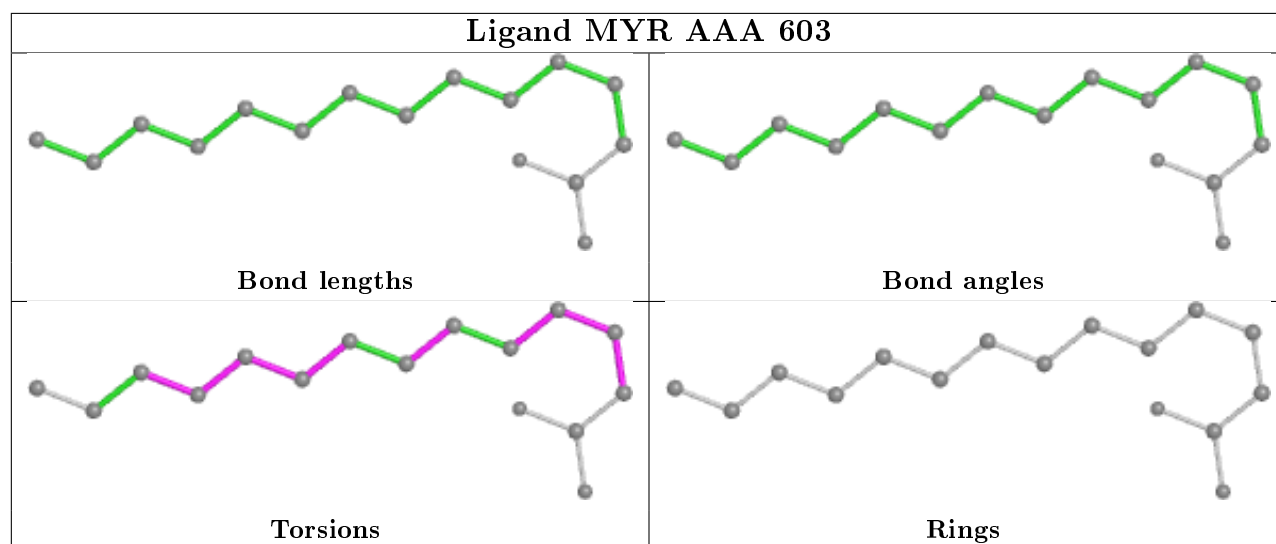
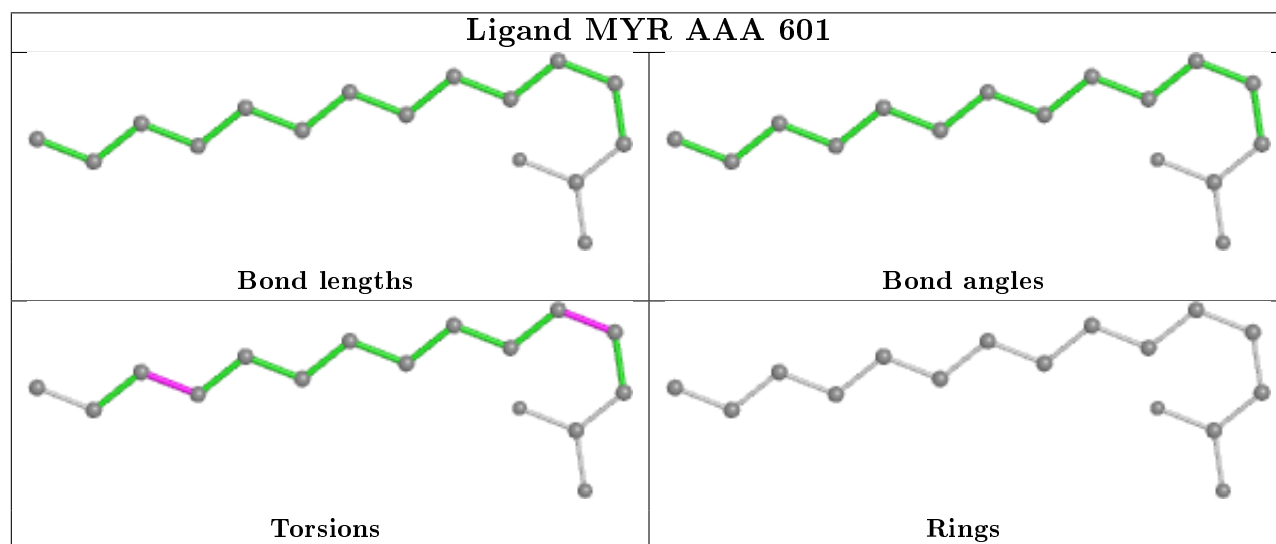
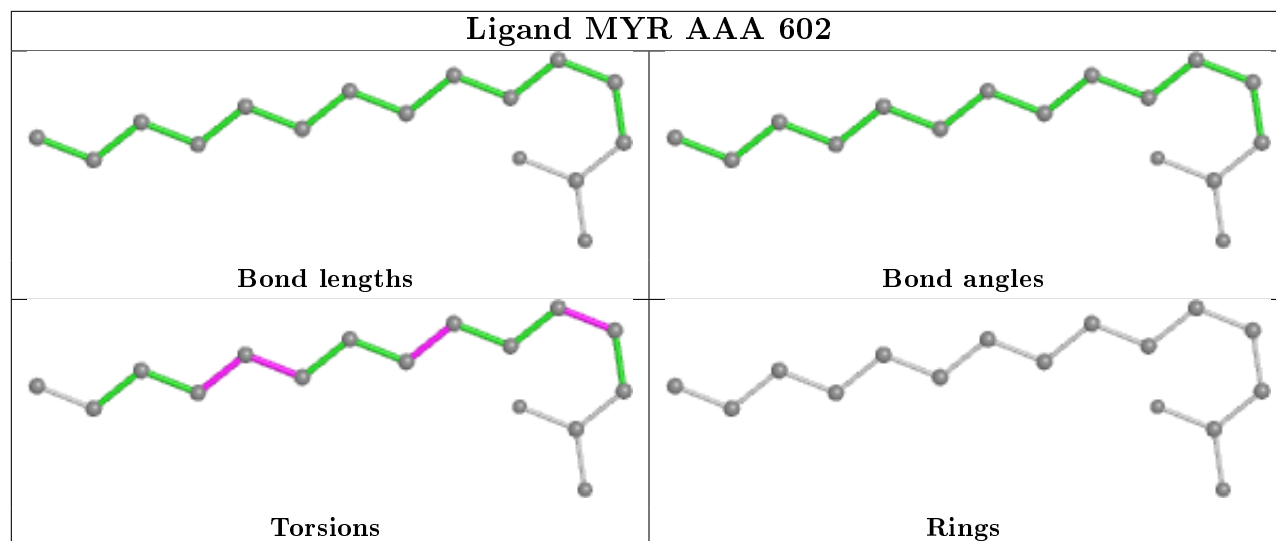
There are no ring outliers.

3 monomers are involved in 8 short contacts:

Mol	Chain	Res	Type	Clashes	Symm-Clashes
2	AAA	606	MYR	1	0
3	AAA	609	MPD	4	0
2	AAA	602	MYR	3	0

The following is a two-dimensional graphical depiction of Mogul quality analysis of bond lengths, bond angles, torsion angles, and ring geometry for all instances of the Ligand of Interest. In addition, ligands with molecular weight > 250 and outliers as shown on the validation Tables will also be included. For torsion angles, if less than 5% of the Mogul distribution of torsion angles is within 10 degrees of the torsion angle in question, then that torsion angle is considered an outlier. Any bond that is central to one or more torsion angles identified as an outlier by Mogul will be highlighted in the graph. For rings, the root-mean-square deviation (RMSD) between the ring in question and similar rings identified by Mogul is calculated over all ring torsion angles. If the average RMSD is greater than 60 degrees and the minimal RMSD between the ring in question and any Mogul-identified rings is also greater than 60 degrees, then that ring is considered an outlier. The outliers are highlighted in purple. The color gray indicates Mogul did not find sufficient equivalents in the CSD to analyse the geometry.





5.7 Other polymers [i](#)

There are no such residues in this entry.

5.8 Polymer linkage issues [i](#)

There are no chain breaks in this entry.

6 Fit of model and data ⓘ

6.1 Protein, DNA and RNA chains ⓘ

In the following table, the column labelled ‘#RSRZ> 2’ contains the number (and percentage) of RSRZ outliers, followed by percent RSRZ outliers for the chain as percentile scores relative to all X-ray entries and entries of similar resolution. The OWAB column contains the minimum, median, 95th percentile and maximum values of the occupancy-weighted average B-factor per residue. The column labelled ‘Q< 0.9’ lists the number of (and percentage) of residues with an average occupancy less than 0.9.

Mol	Chain	Analysed	<RSRZ>	#RSRZ>2	OWAB(Å ²)	Q<0.9
1	AAA	581/584 (99%)	0.21	18 (3%) 49 54	32, 56, 94, 135	0

All (18) RSRZ outliers are listed below:

Mol	Chain	Res	Type	RSRZ
1	AAA	561	ALA	5.0
1	AAA	559	CYS	4.2
1	AAA	553	ALA	4.2
1	AAA	560	LYS	3.3
1	AAA	562	ASP	3.2
1	AAA	581	ALA	2.9
1	AAA	557	LYS	2.8
1	AAA	462	VAL	2.6
1	AAA	313	LYS	2.6
1	AAA	555	VAL	2.6
1	AAA	516	LEU	2.4
1	AAA	575	LEU	2.4
1	AAA	582	ALA	2.4
1	AAA	151	ALA	2.3
1	AAA	556	GLU	2.2
1	AAA	25	ILE	2.2
1	AAA	343	VAL	2.1
1	AAA	156[A]	PHE	2.0

6.2 Non-standard residues in protein, DNA, RNA chains ⓘ

There are no non-standard protein/DNA/RNA residues in this entry.

6.3 Carbohydrates ⓘ

There are no monosaccharides in this entry.

6.4 Ligands ⓘ

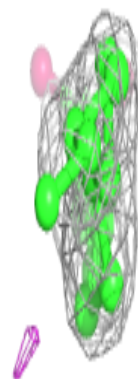
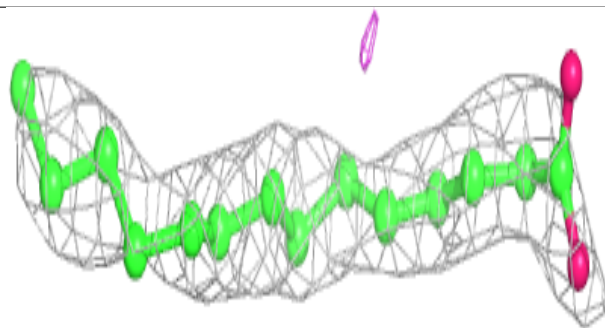
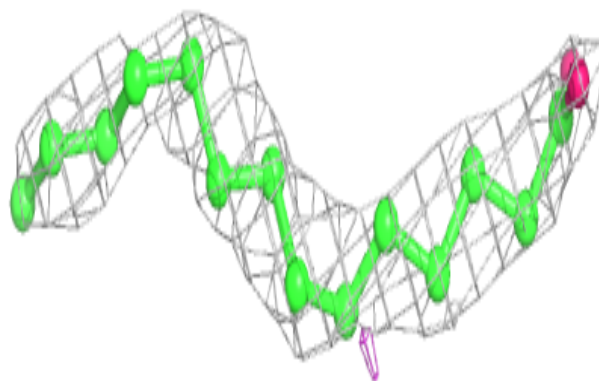
In the following table, the Atoms column lists the number of modelled atoms in the group and the number defined in the chemical component dictionary. The B-factors column lists the minimum, median, 95th percentile and maximum values of B factors of atoms in the group. The column labelled 'Q< 0.9' lists the number of atoms with occupancy less than 0.9.

Mol	Type	Chain	Res	Atoms	RSCC	RSR	B-factors(\AA^2)	Q<0.9
4	FMT	AAA	612	3/3	0.73	0.26	47,47,57,67	0
2	MYR	AAA	604	16/16	0.82	0.29	62,70,96,102	0
2	MYR	AAA	601	16/16	0.84	0.27	54,70,83,84	0
3	MPD	AAA	610	8/8	0.86	0.19	74,78,83,84	0
2	MYR	AAA	602	16/16	0.86	0.27	47,56,71,71	0
2	MYR	AAA	603	16/16	0.88	0.28	63,75,100,101	0
2	MYR	AAA	605	16/16	0.88	0.42	55,62,95,98	0
3	MPD	AAA	607	8/8	0.92	0.17	54,59,64,64	0
3	MPD	AAA	609	8/8	0.92	0.27	65,69,75,79	0
3	MPD	AAA	608	8/8	0.93	0.19	43,50,54,55	0
2	MYR	AAA	606	16/16	0.94	0.32	42,55,72,72	0
3	MPD	AAA	611	8/8	0.95	0.22	61,63,69,70	0
5	PO4	AAA	613	5/5	0.98	0.17	36,47,56,59	0

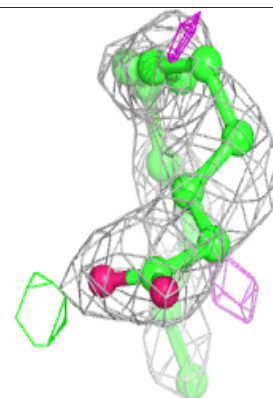
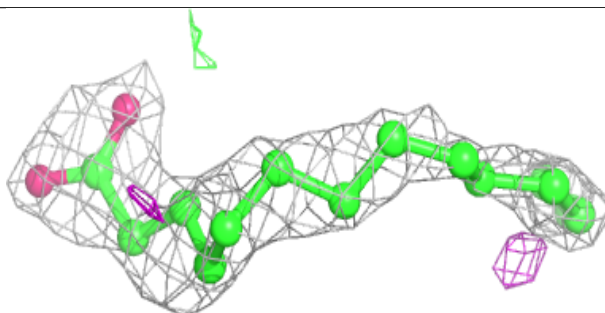
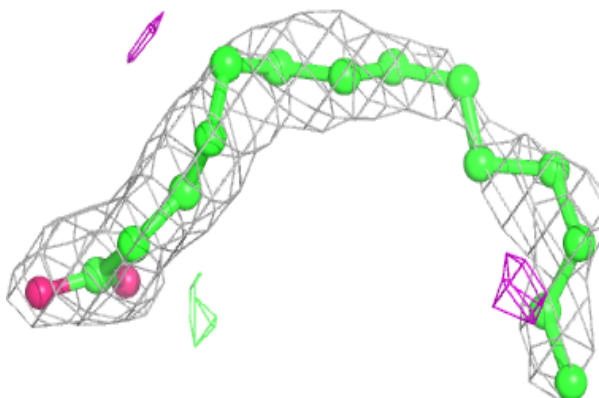
The following is a graphical depiction of the model fit to experimental electron density of all instances of the Ligand of Interest. In addition, ligands with molecular weight > 250 and outliers as shown on the geometry validation Tables will also be included. Each fit is shown from different orientation to approximate a three-dimensional view.

Electron density around MYR AAA 604:

$2mF_o-DF_c$ (at 0.7 rmsd) in gray
 mF_o-DF_c (at 3 rmsd) in purple (negative)
and green (positive)

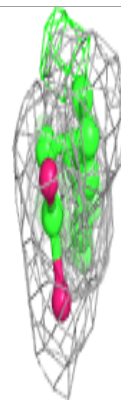
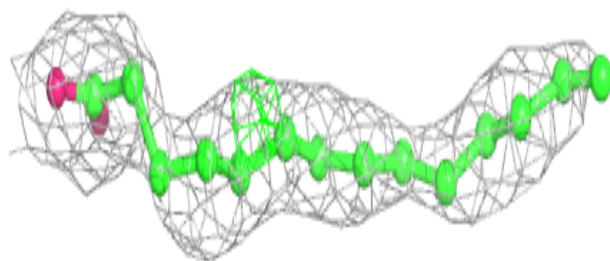
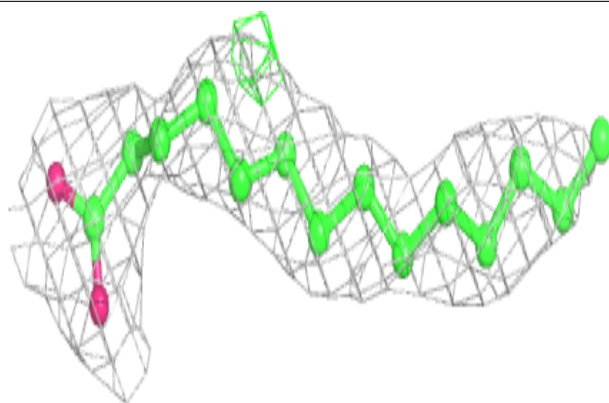
**Electron density around MYR AAA 601:**

$2mF_o-DF_c$ (at 0.7 rmsd) in gray
 mF_o-DF_c (at 3 rmsd) in purple (negative)
and green (positive)

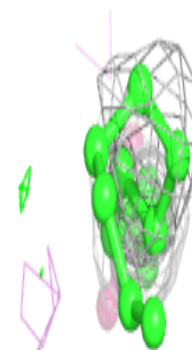
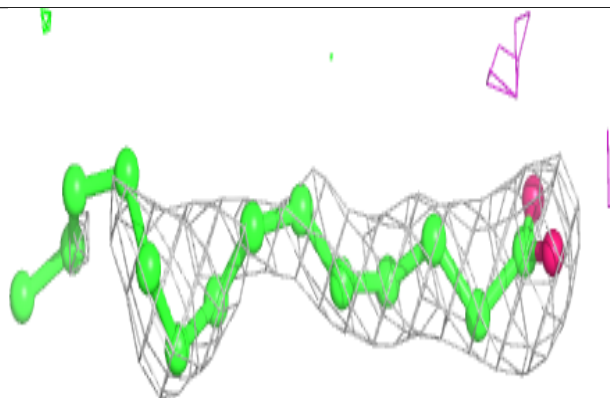
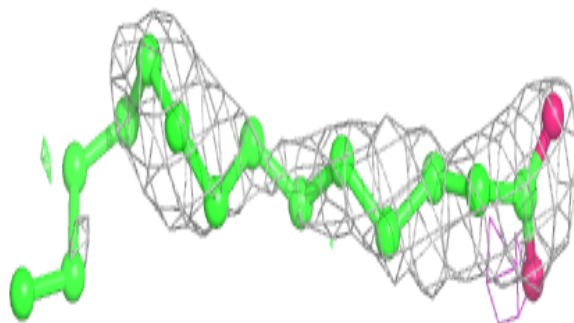


Electron density around MYR AAA 602:

$2mF_o-DF_c$ (at 0.7 rmsd) in gray
 mF_o-DF_c (at 3 rmsd) in purple (negative)
and green (positive)

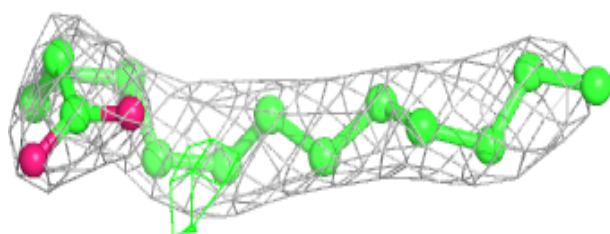
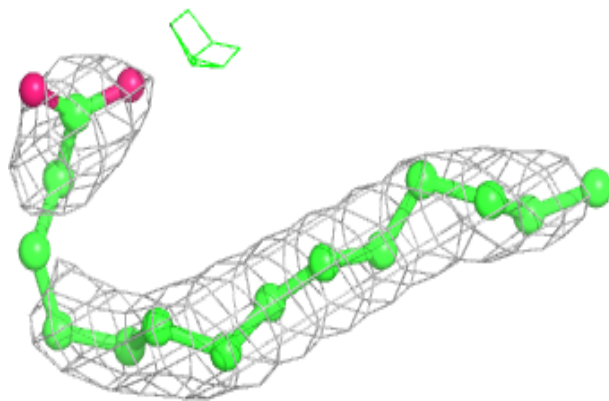
**Electron density around MYR AAA 603:**

$2mF_o-DF_c$ (at 0.7 rmsd) in gray
 mF_o-DF_c (at 3 rmsd) in purple (negative)
and green (positive)

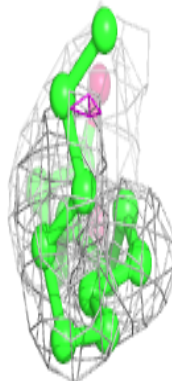
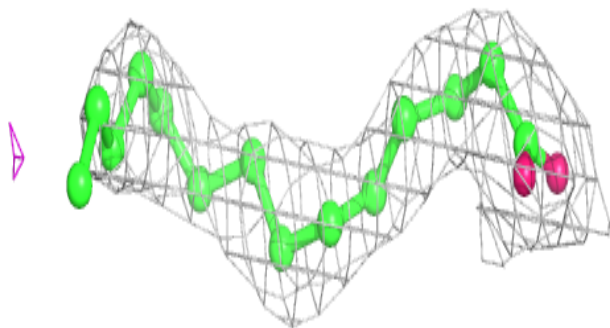
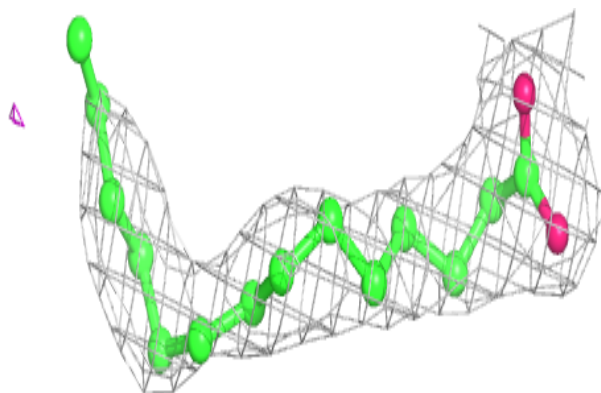


Electron density around MYR AAA 605:

$2mF_o-DF_c$ (at 0.7 rmsd) in gray
 mF_o-DF_c (at 3 rmsd) in purple (negative)
and green (positive)

**Electron density around MYR AAA 606:**

$2mF_o-DF_c$ (at 0.7 rmsd) in gray
 mF_o-DF_c (at 3 rmsd) in purple (negative)
and green (positive)



6.5 Other polymers [i](#)

There are no such residues in this entry.