



# Full wwPDB X-ray Structure Validation Report ⓘ

May 14, 2020 – 09:09 am BST

PDB ID : 4AB9  
Title : Fragments bound to bovine trypsin for the SAMPL challenge  
Authors : Newman, J.; Peat, T.S.  
Deposited on : 2011-12-08  
Resolution : 1.20 Å(reported)

This is a Full wwPDB X-ray Structure Validation Report for a publicly released PDB entry.

We welcome your comments at [validation@mail.wwpdb.org](mailto:validation@mail.wwpdb.org)

A user guide is available at

<https://www.wwpdb.org/validation/2017/XrayValidationReportHelp>

with specific help available everywhere you see the ⓘ symbol.

---

The following versions of software and data (see [references ⓘ](#)) were used in the production of this report:

MolProbity : 4.02b-467  
Mogul : 1.8.5 (274361), CSD as541be (2020)  
Xtriage (Phenix) : 1.13  
EDS : 2.11  
Percentile statistics : 20191225.v01 (using entries in the PDB archive December 25th 2019)  
Refmac : 5.8.0158  
CCP4 : 7.0.044 (Gargrove)  
Ideal geometry (proteins) : Engh & Huber (2001)  
Ideal geometry (DNA, RNA) : Parkinson et al. (1996)  
Validation Pipeline (wwPDB-VP) : 2.11

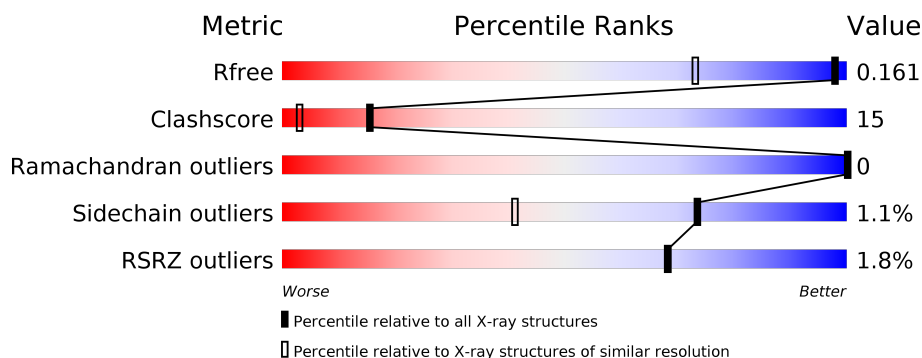
# 1 Overall quality at a glance

The following experimental techniques were used to determine the structure:

*X-RAY DIFFRACTION*

The reported resolution of this entry is 1.20 Å.

Percentile scores (ranging between 0-100) for global validation metrics of the entry are shown in the following graphic. The table shows the number of entries on which the scores are based.



Metric	Whole archive (#Entries)	Similar resolution (#Entries, resolution range(Å))
$R_{free}$	130704	1223 (1.22-1.18)
Clashscore	141614	1286 (1.22-1.18)
Ramachandran outliers	138981	1240 (1.22-1.18)
Sidechain outliers	138945	1239 (1.22-1.18)
RSRZ outliers	127900	1200 (1.22-1.18)

The table below summarises the geometric issues observed across the polymeric chains and their fit to the electron density. The red, orange, yellow and green segments on the lower bar indicate the fraction of residues that contain outliers for  $\geq 3$ , 2, 1 and 0 types of geometric quality criteria respectively. A grey segment represents the fraction of residues that are not modelled. The numeric value for each fraction is indicated below the corresponding segment, with a dot representing fractions  $\leq 5\%$ . The upper red bar (where present) indicates the fraction of residues that have poor fit to the electron density. The numeric value is given above the bar.

Mol	Chain	Length	Quality of chain
1	A	223	<div> <div>2%</div> <div>82%</div> <div>16%</div> <div>.</div> </div>

## 2 Entry composition [i](#)

There are 7 unique types of molecules in this entry. The entry contains 2330 atoms, of which 0 are hydrogens and 0 are deuteriums.

In the tables below, the ZeroOcc column contains the number of atoms modelled with zero occupancy, the AltConf column contains the number of residues with at least one atom in alternate conformation and the Trace column contains the number of residues modelled with at most 2 atoms.

- Molecule 1 is a protein called CATIONIC TRYPSIN.

Mol	Chain	Residues	Atoms					ZeroOcc	AltConf	Trace
1	A	223	Total	C	N	O	S	0	34	0
			1879	1170	319	374	16			

- Molecule 2 is SULFATE ION (three-letter code: SO4) (formula: O<sub>4</sub>S).

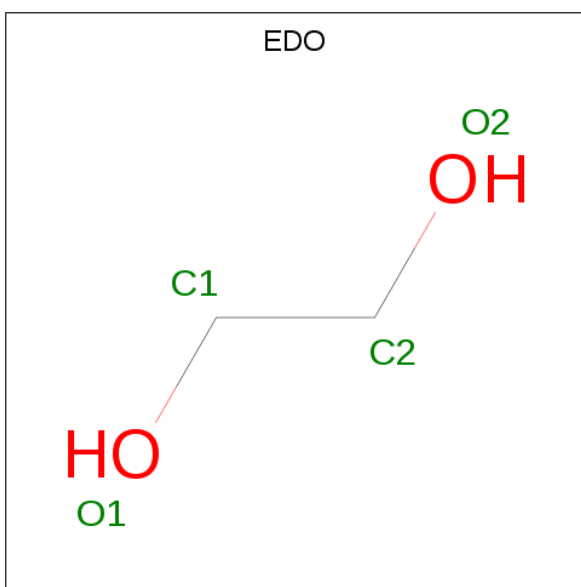


Mol	Chain	Residues	Atoms			ZeroOcc	AltConf
2	A	1	Total	O	S	0	0
			5	4	1		

- Molecule 3 is CALCIUM ION (three-letter code: CA) (formula: Ca).

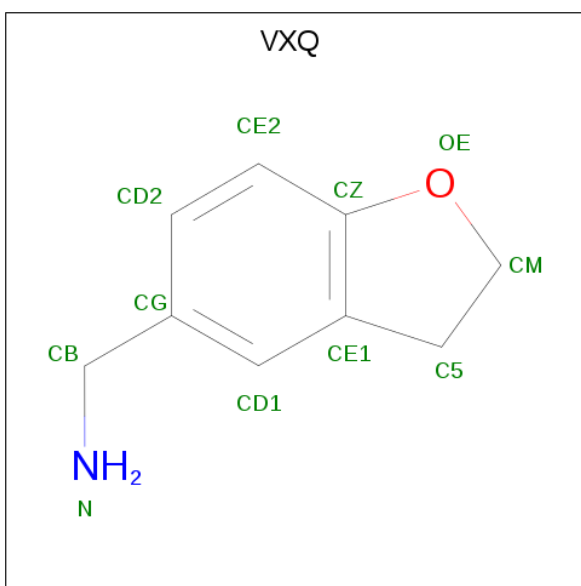
Mol	Chain	Residues	Atoms		ZeroOcc	AltConf
3	A	1	Total	Ca	0	0
			1	1		

- Molecule 4 is 1,2-ETHANEDIOL (three-letter code: EDO) (formula: C<sub>2</sub>H<sub>6</sub>O<sub>2</sub>).



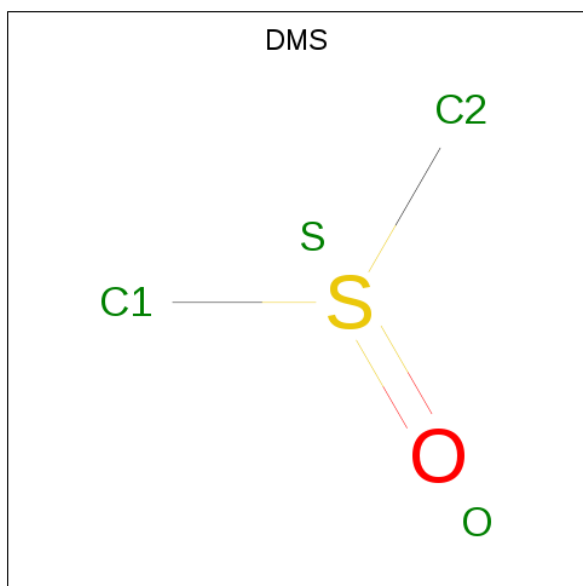
Mol	Chain	Residues	Atoms			ZeroOcc	AltConf
4	A	1	Total	C	O	0	0
			4	2	2		
4	A	1	Total	C	O	0	0
			4	2	2		
4	A	1	Total	C	O	0	0
			4	2	2		

- Molecule 5 is 1-(2,3-dihydro-1-benzofuran-5-yl)methanamine (three-letter code: VXQ) (formula: C<sub>9</sub>H<sub>11</sub>NO).



Mol	Chain	Residues	Atoms				ZeroOcc	AltConf
5	A	1	Total	C	N	O	0	0
			11	9	1	1		

- Molecule 6 is DIMETHYL SULFOXIDE (three-letter code: DMS) (formula:  $C_2H_6OS$ ).



Mol	Chain	Residues	Atoms				ZeroOcc	AltConf
6	A	1	Total	C	O	S	0	0
			4	2	1	1		

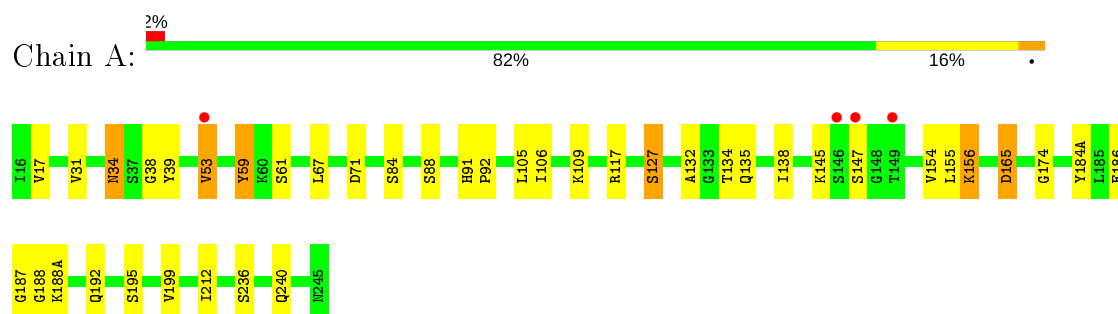
- Molecule 7 is water.

Mol	Chain	Residues	Atoms		ZeroOcc	AltConf
7	A	418	Total	O	0	0
			418	418		

### 3 Residue-property plots

These plots are drawn for all protein, RNA and DNA chains in the entry. The first graphic for a chain summarises the proportions of the various outlier classes displayed in the second graphic. The second graphic shows the sequence view annotated by issues in geometry and electron density. Residues are color-coded according to the number of geometric quality criteria for which they contain at least one outlier: green = 0, yellow = 1, orange = 2 and red = 3 or more. A red dot above a residue indicates a poor fit to the electron density ( $RSRZ > 2$ ). Stretches of 2 or more consecutive residues without any outlier are shown as a green connector. Residues present in the sample, but not in the model, are shown in grey.

#### • Molecule 1: CATIONIC TRYPSIN



## 4 Data and refinement statistics

Property	Value	Source
Space group	P 21 21 21	Depositor
Cell constants a, b, c, $\alpha$ , $\beta$ , $\gamma$	54.75Å 58.50Å 66.99Å 90.00° 90.00° 90.00°	Depositor
Resolution (Å)	44.06 – 1.20 33.49 – 1.20	Depositor EDS
% Data completeness (in resolution range)	99.9 (44.06-1.20) 99.9 (33.49-1.20)	Depositor EDS
$R_{merge}$	0.07	Depositor
$R_{sym}$	(Not available)	Depositor
$\langle I/\sigma(I) \rangle$ <sup>1</sup>	9.52 (at 1.20Å)	Xtriage
Refinement program	REFMAC 5.6.0117	Depositor
R, $R_{free}$	0.140 , 0.162 0.139 , 0.161	Depositor DCC
$R_{free}$ test set	3439 reflections (5.07%)	wwPDB-VP
Wilson B-factor (Å <sup>2</sup> )	5.8	Xtriage
Anisotropy	0.027	Xtriage
Bulk solvent $k_{sol}$ (e/Å <sup>3</sup> ), $B_{sol}$ (Å <sup>2</sup> )	0.32 , 44.1	EDS
L-test for twinning <sup>2</sup>	$\langle  L  \rangle = 0.49$ , $\langle L^2 \rangle = 0.32$	Xtriage
Estimated twinning fraction	No twinning to report.	Xtriage
$F_o, F_c$ correlation	0.97	EDS
Total number of atoms	2330	wwPDB-VP
Average B, all atoms (Å <sup>2</sup> )	8.0	wwPDB-VP

Xtriage's analysis on translational NCS is as follows: *The largest off-origin peak in the Patterson function is 6.59% of the height of the origin peak. No significant pseudotranslation is detected.*

<sup>1</sup>Intensities estimated from amplitudes.

<sup>2</sup>Theoretical values of  $\langle |L| \rangle$ ,  $\langle L^2 \rangle$  for acentric reflections are 0.5, 0.333 respectively for untwinned datasets, and 0.375, 0.2 for perfectly twinned datasets.

## 5 Model quality [i](#)

### 5.1 Standard geometry [i](#)

Bond lengths and bond angles in the following residue types are not validated in this section: CA, DMS, VXQ, EDO, SO4

The Z score for a bond length (or angle) is the number of standard deviations the observed value is removed from the expected value. A bond length (or angle) with  $|Z| > 5$  is considered an outlier worth inspection. RMSZ is the root-mean-square of all Z scores of the bond lengths (or angles).

Mol	Chain	Bond lengths		Bond angles	
		RMSZ	$\# Z  > 5$	RMSZ	$\# Z  > 5$
1	A	1.50	18/1932 (0.9%)	1.23	14/2611 (0.5%)

Chiral center outliers are detected by calculating the chiral volume of a chiral center and verifying if the center is modelled as a planar moiety or with the opposite hand. A planarity outlier is detected by checking planarity of atoms in a peptide group, atoms in a mainchain group or atoms of a sidechain that are expected to be planar.

Mol	Chain	#Chirality outliers	#Planarity outliers
1	A	0	1

All (18) bond length outliers are listed below:

Mol	Chain	Res	Type	Atoms	Z	Observed(Å)	Ideal(Å)
1	A	59	TYR	CE2-CZ	-10.15	1.25	1.38
1	A	59	TYR	CD1-CE1	9.41	1.53	1.39
1	A	156[A]	LYS	CE-NZ	9.31	1.72	1.49
1	A	156[B]	LYS	CE-NZ	9.31	1.72	1.49
1	A	39	TYR	CE1-CZ	8.77	1.50	1.38
1	A	39	TYR	CD2-CE2	-8.08	1.27	1.39
1	A	61	SER	CB-OG	-7.60	1.32	1.42
1	A	195	SER	CA-CB	7.56	1.64	1.52
1	A	127	SER	CB-OG	-6.36	1.33	1.42
1	A	39	TYR	CE2-CZ	-6.26	1.30	1.38
1	A	186[A]	GLU	CD-OE1	5.95	1.32	1.25
1	A	186[B]	GLU	CD-OE1	5.95	1.32	1.25
1	A	186[C]	GLU	CD-OE1	5.95	1.32	1.25
1	A	59	TYR	CE1-CZ	-5.69	1.31	1.38
1	A	186[A]	GLU	CD-OE2	5.30	1.31	1.25
1	A	186[B]	GLU	CD-OE2	5.30	1.31	1.25
1	A	186[C]	GLU	CD-OE2	5.30	1.31	1.25
1	A	188	GLY	C-N	-5.27	1.22	1.34

All (14) bond angle outliers are listed below:

Mol	Chain	Res	Type	Atoms	Z	Observed(°)	Ideal(°)
1	A	117	ARG	NE-CZ-NH2	-11.40	114.60	120.30
1	A	165[A]	ASP	CB-CG-OD1	7.56	125.11	118.30
1	A	165[B]	ASP	CB-CG-OD1	7.56	125.11	118.30
1	A	59	TYR	CE1-CZ-CE2	7.02	131.03	119.80
1	A	59	TYR	CD1-CE1-CZ	-6.62	113.84	119.80
1	A	59	TYR	CB-CG-CD2	-6.04	117.38	121.00
1	A	59	TYR	CZ-CE2-CD2	-5.62	114.74	119.80
1	A	53[A]	VAL	CG1-CB-CG2	-5.42	102.22	110.90
1	A	53[B]	VAL	CG1-CB-CG2	-5.42	102.22	110.90
1	A	53[C]	VAL	CG1-CB-CG2	-5.42	102.22	110.90
1	A	147	SER	C-N-CA	-5.34	111.09	122.30
1	A	39	TYR	CZ-CE2-CD2	5.11	124.40	119.80
1	A	184(A)	TYR	CB-CG-CD2	5.03	124.02	121.00
1	A	61	SER	CA-CB-OG	-5.02	97.65	111.20

There are no chirality outliers.

All (1) planarity outliers are listed below:

Mol	Chain	Res	Type	Group
1	A	59	TYR	Sidechain

## 5.2 Too-close contacts ⓘ

In the following table, the Non-H and H(model) columns list the number of non-hydrogen atoms and hydrogen atoms in the chain respectively. The H(added) column lists the number of hydrogen atoms added and optimized by MolProbity. The Clashes column lists the number of clashes within the asymmetric unit, whereas Symm-Clashes lists symmetry related clashes.

Mol	Chain	Non-H	H(model)	H(added)	Clashes	Symm-Clashes
1	A	1879	0	1853	55	0
2	A	5	0	0	1	0
3	A	1	0	0	0	0
4	A	12	0	16	2	0
5	A	11	0	11	2	0
6	A	4	0	6	0	0
7	A	418	0	0	23	10
All	All	2330	0	1886	57	10

The all-atom clashscore is defined as the number of clashes found per 1000 atoms (including hydrogen atoms). The all-atom clashscore for this structure is 15.

All (57) close contacts within the same asymmetric unit are listed below, sorted by their clash magnitude.

Atom-1	Atom-2	Interatomic distance (Å)	Clash overlap (Å)
1:A:156[A]:LYS:NZ	1:A:156[A]:LYS:CE	1.72	1.48
1:A:135[B]:GLN:OE1	7:A:2288:HOH:O	1.78	1.01
1:A:134[B]:THR:HG22	7:A:2281:HOH:O	1.63	0.96
1:A:134[B]:THR:CG2	7:A:2281:HOH:O	2.15	0.94
1:A:165[B]:ASP:OD1	7:A:2321:HOH:O	1.86	0.93
4:A:1250:EDO:O1	7:A:2344:HOH:O	1.89	0.91
1:A:31[A]:VAL:CG1	1:A:67[A]:LEU:CD2	2.56	0.83
1:A:138[B]:ILE:HD12	1:A:199:VAL:HG22	1.61	0.81
1:A:31[A]:VAL:CG1	1:A:67[A]:LEU:HD23	2.12	0.79
1:A:31[A]:VAL:HG11	1:A:67[A]:LEU:CD2	2.16	0.75
1:A:154[B]:VAL:HG11	7:A:2148:HOH:O	1.87	0.74
1:A:156[A]:LYS:CD	1:A:156[A]:LYS:NZ	2.50	0.74
1:A:31[A]:VAL:HG12	1:A:67[A]:LEU:CD2	2.18	0.72
1:A:138[B]:ILE:HD11	1:A:199:VAL:HG13	1.73	0.70
1:A:187[A]:GLY:HA2	7:A:2357:HOH:O	1.90	0.70
1:A:187[A]:GLY:C	7:A:2357:HOH:O	2.31	0.69
1:A:192[A]:GLN:OE1	5:A:1251:VXQ:HE2	1.93	0.69
1:A:31[A]:VAL:HG12	1:A:67[A]:LEU:HD23	1.73	0.69
1:A:188(A)[A]:LYS:NZ	7:A:2366:HOH:O	2.27	0.67
1:A:127:SER:HB3	7:A:2261:HOH:O	1.96	0.66
1:A:187[A]:GLY:CA	7:A:2357:HOH:O	2.43	0.65
1:A:134[B]:THR:HG21	7:A:2274:HOH:O	1.96	0.65
1:A:145[B]:LYS:HE2	7:A:2297:HOH:O	1.97	0.64
1:A:174[A]:GLY:HA2	2:A:1246:SO4:O4	1.98	0.64
1:A:53[B]:VAL:HG12	1:A:105:LEU:CD2	2.28	0.64
1:A:135[B]:GLN:CG	7:A:2286:HOH:O	2.50	0.59
1:A:145[B]:LYS:HE2	7:A:2295:HOH:O	2.03	0.59
1:A:135[B]:GLN:HG2	7:A:2286:HOH:O	2.02	0.59
1:A:145[B]:LYS:CE	7:A:2295:HOH:O	2.52	0.58
1:A:53[B]:VAL:HG12	1:A:105:LEU:HD23	1.86	0.57
1:A:192[A]:GLN:OE1	5:A:1251:VXQ:CE2	2.53	0.56
1:A:34:ASN:ND2	1:A:38:GLY:H	2.04	0.55
1:A:192[A]:GLN:NE2	7:A:2293:HOH:O	2.11	0.54
1:A:53[B]:VAL:CG1	1:A:105:LEU:CD2	2.88	0.52
1:A:31[A]:VAL:HG12	1:A:67[A]:LEU:HD22	1.90	0.52
1:A:138[B]:ILE:CD1	1:A:199:VAL:HG13	2.39	0.52
1:A:31[A]:VAL:CG1	1:A:67[A]:LEU:HD22	2.40	0.51
1:A:154[B]:VAL:HG12	1:A:155:LEU:N	2.27	0.50
1:A:53[B]:VAL:CG1	1:A:105:LEU:HD23	2.42	0.50
4:A:1250:EDO:C2	7:A:2344:HOH:O	2.60	0.49

*Continued on next page...*

Continued from previous page...

Atom-1	Atom-2	Interatomic distance (Å)	Clash overlap (Å)
1:A:84:SER:HB2	1:A:109[A]:LYS:HD2	1.93	0.49
1:A:71:ASP:CG	1:A:154[B]:VAL:HG13	2.35	0.48
1:A:156[A]:LYS:HD2	1:A:156[A]:LYS:NZ	2.31	0.46
1:A:135[B]:GLN:CD	7:A:2288:HOH:O	2.40	0.46
1:A:53[B]:VAL:HG12	1:A:105:LEU:HD21	1.97	0.45
1:A:91:HIS:CG	1:A:92[A]:PRO:HD2	2.52	0.45
1:A:132:ALA:HB3	7:A:2130:HOH:O	2.16	0.44
1:A:53[B]:VAL:CG1	1:A:105:LEU:HD21	2.48	0.44
1:A:88[B]:SER:CB	1:A:106[B]:ILE:HD13	2.47	0.44
1:A:71:ASP:OD2	1:A:154[B]:VAL:HG13	2.18	0.43
1:A:212[B]:ILE:HG23	1:A:212[B]:ILE:HD12	1.78	0.43
1:A:145[B]:LYS:HA	1:A:145[B]:LYS:HD3	1.37	0.41
1:A:17:VAL:O	1:A:188(A)[A]:LYS:HA	2.20	0.41
1:A:135[B]:GLN:HG3	7:A:2286:HOH:O	2.15	0.41
1:A:236[C]:SER:HB3	7:A:2402:HOH:O	2.21	0.41
1:A:88[B]:SER:CB	1:A:106[B]:ILE:CD1	2.99	0.41

All (10) symmetry-related close contacts are listed below. The label for Atom-2 includes the symmetry operator and encoded unit-cell translations to be applied.

Atom-1	Atom-2	Interatomic distance (Å)	Clash overlap (Å)
7:A:2057:HOH:O	7:A:2318:HOH:O[2_444]	1.21	0.99
7:A:2142:HOH:O	7:A:2200:HOH:O[4_545]	1.62	0.58
7:A:2088:HOH:O	7:A:2308:HOH:O[4_445]	1.67	0.53
7:A:2019:HOH:O	7:A:2217:HOH:O[3_545]	1.77	0.43
7:A:2108:HOH:O	7:A:2307:HOH:O[4_445]	1.80	0.40
7:A:2011:HOH:O	7:A:2348:HOH:O[3_545]	1.81	0.39
7:A:2056:HOH:O	7:A:2130:HOH:O[2_444]	1.95	0.25
7:A:2057:HOH:O	7:A:2151:HOH:O[2_444]	1.98	0.22
7:A:2022:HOH:O	7:A:2096:HOH:O[3_545]	2.11	0.09
7:A:2161:HOH:O	7:A:2213:HOH:O[4_545]	2.11	0.09

## 5.3 Torsion angles ⓘ

### 5.3.1 Protein backbone ⓘ

In the following table, the Percentiles column shows the percent Ramachandran outliers of the chain as a percentile score with respect to all X-ray entries followed by that with respect to entries of similar resolution.

The Analysed column shows the number of residues for which the backbone conformation was analysed, and the total number of residues.

Mol	Chain	Analysed	Favoured	Allowed	Outliers	Percentiles	
1	A	258/223 (116%)	255 (99%)	3 (1%)	0	100	100

There are no Ramachandran outliers to report.

### 5.3.2 Protein sidechains ⓘ

In the following table, the Percentiles column shows the percent sidechain outliers of the chain as a percentile score with respect to all X-ray entries followed by that with respect to entries of similar resolution.

The Analysed column shows the number of residues for which the sidechain conformation was analysed, and the total number of residues.

Mol	Chain	Analysed	Rotameric	Outliers	Percentiles	
1	A	218/184 (118%)	216 (99%)	2 (1%)	78	50

All (2) residues with a non-rotameric sidechain are listed below:

Mol	Chain	Res	Type
1	A	34	ASN
1	A	240	GLN

Some sidechains can be flipped to improve hydrogen bonding and reduce clashes. All (4) such sidechains are listed below:

Mol	Chain	Res	Type
1	A	30	GLN
1	A	34	ASN
1	A	223	ASN
1	A	240	GLN

### 5.3.3 RNA ⓘ

There are no RNA molecules in this entry.

## 5.4 Non-standard residues in protein, DNA, RNA chains ⓘ

There are no non-standard protein/DNA/RNA residues in this entry.

## 5.5 Carbohydrates [i](#)

There are no carbohydrates in this entry.

## 5.6 Ligand geometry [i](#)

Of 7 ligands modelled in this entry, 1 is monoatomic - leaving 6 for Mogul analysis.

In the following table, the Counts columns list the number of bonds (or angles) for which Mogul statistics could be retrieved, the number of bonds (or angles) that are observed in the model and the number of bonds (or angles) that are defined in the Chemical Component Dictionary. The Link column lists molecule types, if any, to which the group is linked. The Z score for a bond length (or angle) is the number of standard deviations the observed value is removed from the expected value. A bond length (or angle) with  $|Z| > 2$  is considered an outlier worth inspection. RMSZ is the root-mean-square of all Z scores of the bond lengths (or angles).

Mol	Type	Chain	Res	Link	Bond lengths			Bond angles		
					Counts	RMSZ	$\# Z  > 2$	Counts	RMSZ	$\# Z  > 2$
6	DMS	A	1252	-	3,3,3	1.37	0	3,3,3	1.04	0
2	SO4	A	1246	-	4,4,4	0.52	0	6,6,6	0.66	0
4	EDO	A	1250	-	3,3,3	1.89	1 (33%)	2,2,2	2.02	1 (50%)
4	EDO	A	1248	-	3,3,3	1.16	0	2,2,2	1.06	0
4	EDO	A	1249	-	3,3,3	1.56	1 (33%)	2,2,2	0.22	0
5	VXQ	A	1251	-	12,12,12	1.23	2 (16%)	14,16,16	4.42	6 (42%)

In the following table, the Chirals column lists the number of chiral outliers, the number of chiral centers analysed, the number of these observed in the model and the number defined in the Chemical Component Dictionary. Similar counts are reported in the Torsion and Rings columns. '-' means no outliers of that kind were identified.

Mol	Type	Chain	Res	Link	Chirals	Torsions	Rings
4	EDO	A	1250	-	-	0/1/1/1	-
4	EDO	A	1249	-	-	1/1/1/1	-
4	EDO	A	1248	-	-	0/1/1/1	-
5	VXQ	A	1251	-	-	1/2/8/8	0/2/2/2

All (4) bond length outliers are listed below:

Mol	Chain	Res	Type	Atoms	Z	Observed(Å)	Ideal(Å)
4	A	1250	EDO	C2-C1	2.47	1.65	1.48
5	A	1251	VXQ	CZ-CE1	-2.39	1.35	1.38
4	A	1249	EDO	C2-C1	2.16	1.63	1.48
5	A	1251	VXQ	CD1-CG	-2.02	1.35	1.39

All (7) bond angle outliers are listed below:

Mol	Chain	Res	Type	Atoms	Z	Observed(°)	Ideal(°)
5	A	1251	VXQ	CM-C5-CE1	-11.52	92.19	102.02
5	A	1251	VXQ	CM-OE-CZ	-8.59	97.97	107.21
5	A	1251	VXQ	OE-CM-C5	6.49	114.89	107.92
5	A	1251	VXQ	OE-CZ-CE2	-3.29	121.81	127.81
4	A	1250	EDO	O1-C1-C2	-2.85	91.41	111.91
5	A	1251	VXQ	CD1-CE1-CZ	-2.30	117.61	119.58
5	A	1251	VXQ	CG-CB-N	-2.03	104.83	115.47

There are no chirality outliers.

All (2) torsion outliers are listed below:

Mol	Chain	Res	Type	Atoms
5	A	1251	VXQ	N-CB-CG-CD1
4	A	1249	EDO	O1-C1-C2-O2

There are no ring outliers.

3 monomers are involved in 5 short contacts:

Mol	Chain	Res	Type	Clashes	Symm-Clashes
2	A	1246	SO4	1	0
4	A	1250	EDO	2	0
5	A	1251	VXQ	2	0

## 5.7 Other polymers [i](#)

There are no such residues in this entry.

## 5.8 Polymer linkage issues [i](#)

The following chains have linkage breaks:

Mol	Chain	Number of breaks
1	A	1

All chain breaks are listed below:

Model	Chain	Residue-1	Atom-1	Residue-2	Atom-2	Distance (Å)
1	A	127:SER	C	128[B]:CYS	N	1.19

## 6 Fit of model and data [i](#)

### 6.1 Protein, DNA and RNA chains [i](#)

In the following table, the column labelled ‘#RSRZ> 2’ contains the number (and percentage) of RSRZ outliers, followed by percent RSRZ outliers for the chain as percentile scores relative to all X-ray entries and entries of similar resolution. The OWAB column contains the minimum, median, 95<sup>th</sup> percentile and maximum values of the occupancy-weighted average B-factor per residue. The column labelled ‘Q< 0.9’ lists the number of (and percentage) of residues with an average occupancy less than 0.9.

Mol	Chain	Analysed	<RSRZ>	#RSRZ>2	OWAB(Å <sup>2</sup> )	Q<0.9
1	A	223/223 (100%)	-0.03	4 (1%) 68 68	2, 5, 11, 19	2 (0%)

All (4) RSRZ outliers are listed below:

Mol	Chain	Res	Type	RSRZ
1	A	147	SER	3.3
1	A	149[A]	THR	2.5
1	A	146	SER	2.4
1	A	53[A]	VAL	2.0

### 6.2 Non-standard residues in protein, DNA, RNA chains [i](#)

There are no non-standard protein/DNA/RNA residues in this entry.

### 6.3 Carbohydrates [i](#)

There are no carbohydrates in this entry.

### 6.4 Ligands [i](#)

In the following table, the Atoms column lists the number of modelled atoms in the group and the number defined in the chemical component dictionary. The B-factors column lists the minimum, median, 95<sup>th</sup> percentile and maximum values of B factors of atoms in the group. The column labelled ‘Q< 0.9’ lists the number of atoms with occupancy less than 0.9.

Mol	Type	Chain	Res	Atoms	RSCC	RSR	B-factors(Å <sup>2</sup> )	Q<0.9
5	VXQ	A	1251	11/11	0.85	0.19	10,13,18,20	11
4	EDO	A	1250	4/4	0.86	0.16	10,15,16,25	0
4	EDO	A	1248	4/4	0.88	0.20	14,15,18,19	0

*Continued on next page...*

*Continued from previous page...*

Mol	Type	Chain	Res	Atoms	RSCC	RSR	B-factors( $\text{\AA}^2$ )	Q<0.9
4	EDO	A	1249	4/4	0.95	0.10	4,9,10,13	0
6	DMS	A	1252	4/4	0.96	0.12	6,12,13,17	0
2	SO4	A	1246	5/5	0.96	0.13	9,9,12,13	5
3	CA	A	1247	1/1	1.00	0.04	3,3,3,3	0

## 6.5 Other polymers [i](#)

There are no such residues in this entry.