



Full wwPDB X-ray Structure Validation Report ⓘ

May 17, 2020 – 06:13 am BST

PDB ID : 6AFW
Title : Proton pyrophosphatase-T228D mutant
Authors : Tsai, J.-Y.; Li, K.-M.; Sun, Y.-J.
Deposited on : 2018-08-08
Resolution : 2.19 Å(reported)

This is a Full wwPDB X-ray Structure Validation Report for a publicly released PDB entry.

We welcome your comments at validation@mail.wwpdb.org

A user guide is available at

<https://www.wwpdb.org/validation/2017/XrayValidationReportHelp>

with specific help available everywhere you see the ⓘ symbol.

The following versions of software and data (see [references ⓘ](#)) were used in the production of this report:

MolProbity : 4.02b-467
Mogul : 1.8.5 (274361), CSD as541be (2020)
Xtriage (Phenix) : 1.13
EDS : 2.11
buster-report : 1.1.7 (2018)
Percentile statistics : 20191225.v01 (using entries in the PDB archive December 25th 2019)
Refmac : 5.8.0158
CCP4 : 7.0.044 (Gargrove)
Ideal geometry (proteins) : Engh & Huber (2001)
Ideal geometry (DNA, RNA) : Parkinson et al. (1996)
Validation Pipeline (wwPDB-VP) : 2.11

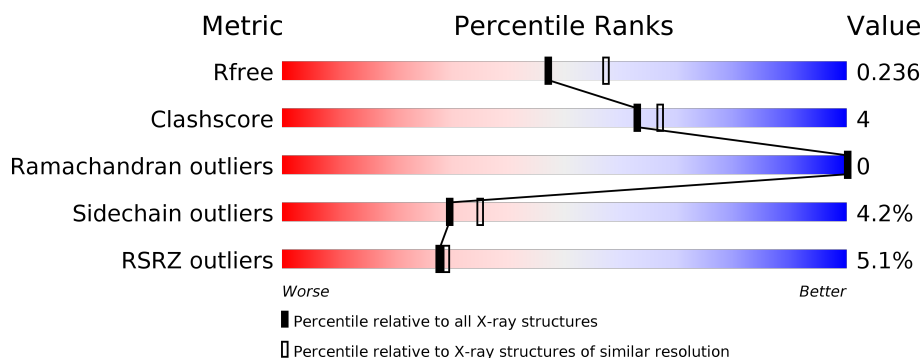
1 Overall quality at a glance

The following experimental techniques were used to determine the structure:

X-RAY DIFFRACTION

The reported resolution of this entry is 2.19 Å.

Percentile scores (ranging between 0-100) for global validation metrics of the entry are shown in the following graphic. The table shows the number of entries on which the scores are based.



Metric	Whole archive (#Entries)	Similar resolution (#Entries, resolution range(Å))
R_{free}	130704	6864 (2.20-2.16)
Clashscore	141614	7689 (2.20-2.16)
Ramachandran outliers	138981	7564 (2.20-2.16)
Sidechain outliers	138945	7564 (2.20-2.16)
RSRZ outliers	127900	6738 (2.20-2.16)

The table below summarises the geometric issues observed across the polymeric chains and their fit to the electron density. The red, orange, yellow and green segments on the lower bar indicate the fraction of residues that contain outliers for ≥ 3 , 2, 1 and 0 types of geometric quality criteria respectively. A grey segment represents the fraction of residues that are not modelled. The numeric value for each fraction is indicated below the corresponding segment, with a dot representing fractions $\leq 5\%$. The upper red bar (where present) indicates the fraction of residues that have poor fit to the electron density. The numeric value is given above the bar.

Mol	Chain	Length	Quality of chain
1	A	766	<div> <div>4%</div> <div> <div></div> <div>86%</div> <div>9%</div> <div>• •</div> </div> </div>
1	B	766	<div> <div>6%</div> <div> <div></div> <div>86%</div> <div>9%</div> <div>• •</div> </div> </div>

2 Entry composition [i](#)

There are 6 unique types of molecules in this entry. The entry contains 11549 atoms, of which 0 are hydrogens and 0 are deuteriums.

In the tables below, the ZeroOcc column contains the number of atoms modelled with zero occupancy, the AltConf column contains the number of residues with at least one atom in alternate conformation and the Trace column contains the number of residues modelled with at most 2 atoms.

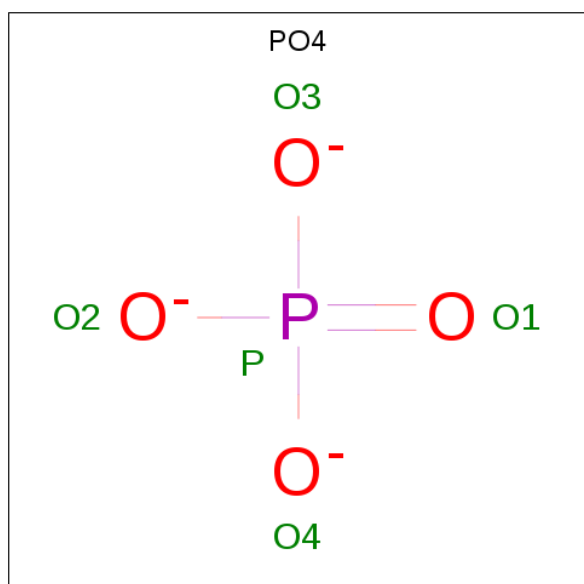
- Molecule 1 is a protein called Pyrophosphate-energized vacuolar membrane proton pump.

Mol	Chain	Residues	Atoms					ZeroOcc	AltConf	Trace
1	A	740	Total	C	N	O	S	0	0	0
			5432	3540	862	1001	29			
1	B	740	Total	C	N	O	S	0	0	0
			5432	3540	862	1001	29			

There are 2 discrepancies between the modelled and reference sequences:

Chain	Residue	Modelled	Actual	Comment	Reference
A	228	ASP	THR	engineered mutation	UNP P21616
B	228	ASP	THR	engineered mutation	UNP P21616

- Molecule 2 is PHOSPHATE ION (three-letter code: PO4) (formula: O₄P).



Mol	Chain	Residues	Atoms			ZeroOcc	AltConf
2	A	1	Total	O	P	0	0
			5	4	1		

Continued on next page...

Continued from previous page...

Mol	Chain	Residues	Atoms			ZeroOcc	AltConf
2	A	1	Total	O	P	0	0
			5	4	1		
2	B	1	Total	O	P	0	0
			5	4	1		
2	B	1	Total	O	P	0	0
			5	4	1		

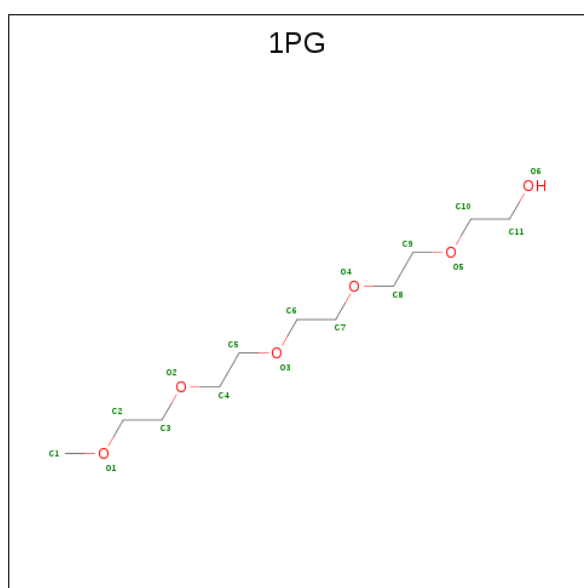
- Molecule 3 is MAGNESIUM ION (three-letter code: MG) (formula: Mg).

Mol	Chain	Residues	Atoms		ZeroOcc	AltConf
3	B	5	Total	Mg	0	0
			5	5		
3	A	5	Total	Mg	0	0
			5	5		

- Molecule 4 is POTASSIUM ION (three-letter code: K) (formula: K).

Mol	Chain	Residues	Atoms		ZeroOcc	AltConf
4	B	1	Total	K	0	0
			1	1		
4	A	1	Total	K	0	0
			1	1		

- Molecule 5 is 2-(2-{2-[2-(2-METHOXY-ETHOXY)-ETHOXY]-ETHOXY}-ETHOXY)-ETHANOL (three-letter code: 1PG) (formula: C₁₁H₂₄O₆).



Mol	Chain	Residues	Atoms			ZeroOcc	AltConf
5	A	1	Total	C	O	0	0
			17	11	6		
5	A	1	Total	C	O	0	0
			17	11	6		
5	A	1	Total	C	O	0	0
			17	11	6		
5	A	1	Total	C	O	0	0
			17	11	6		
5	A	1	Total	C	O	0	0
			17	11	6		
5	B	1	Total	C	O	0	0
			17	11	6		
5	B	1	Total	C	O	0	0
			17	11	6		

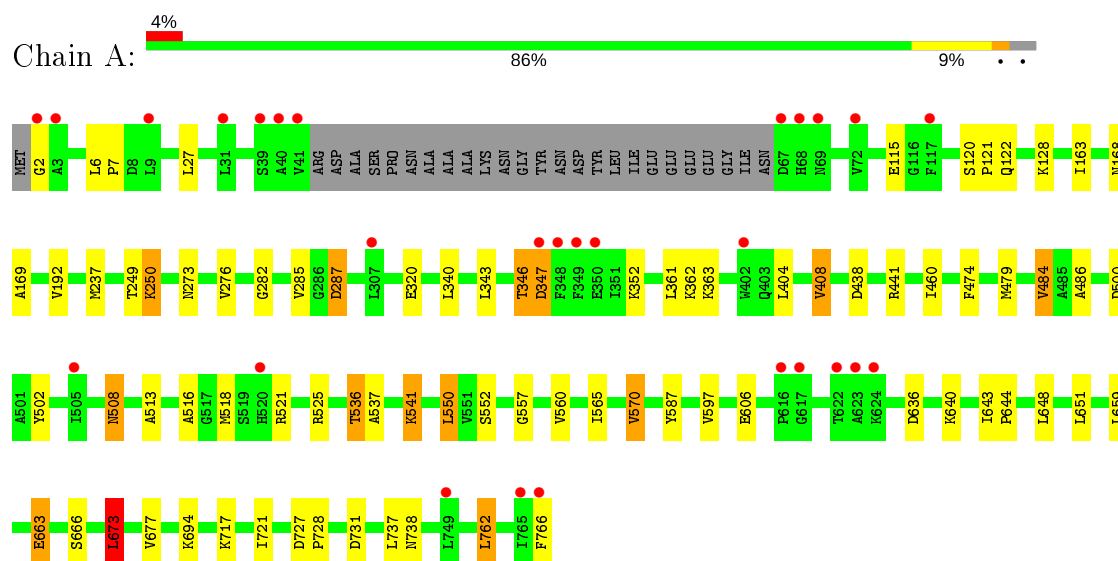
- Molecule 6 is water.

Mol	Chain	Residues	Atoms		ZeroOcc	AltConf
6	A	301	Total	O	0	0
			301	301		
6	B	233	Total	O	0	0
			233	233		

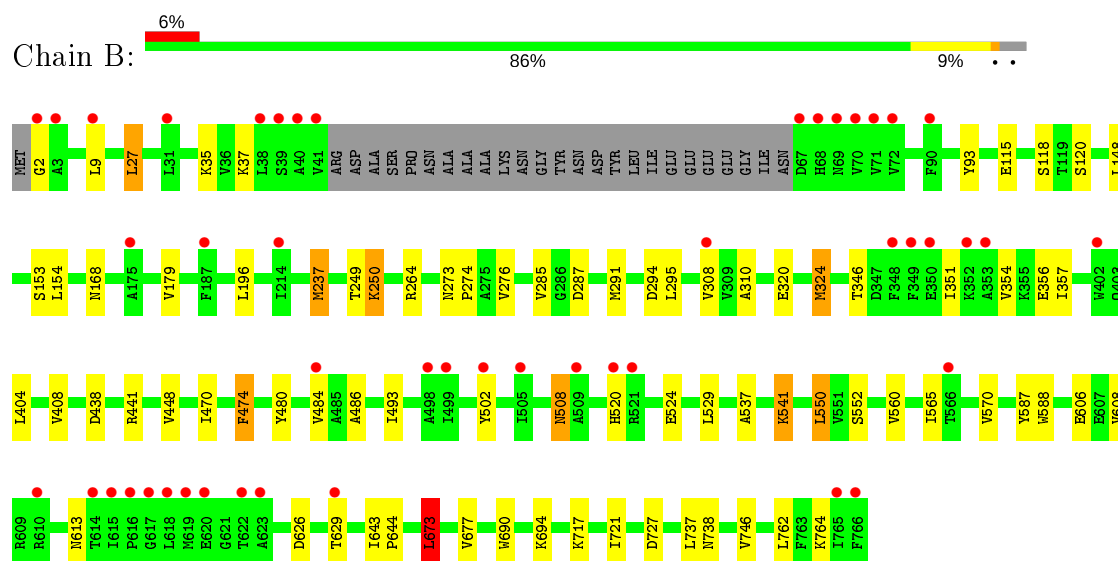
3 Residue-property plots [i](#)

These plots are drawn for all protein, RNA and DNA chains in the entry. The first graphic for a chain summarises the proportions of the various outlier classes displayed in the second graphic. The second graphic shows the sequence view annotated by issues in geometry and electron density. Residues are color-coded according to the number of geometric quality criteria for which they contain at least one outlier: green = 0, yellow = 1, orange = 2 and red = 3 or more. A red dot above a residue indicates a poor fit to the electron density ($RSRZ > 2$). Stretches of 2 or more consecutive residues without any outlier are shown as a green connector. Residues present in the sample, but not in the model, are shown in grey.

- Molecule 1: Pyrophosphate-energized vacuolar membrane proton pump



- Molecule 1: Pyrophosphate-energized vacuolar membrane proton pump



4 Data and refinement statistics

Property	Value	Source
Space group	C 1 2 1	Depositor
Cell constants a, b, c, α , β , γ	212.67Å 88.10Å 156.69Å 90.00° 124.54° 90.00°	Depositor
Resolution (Å)	26.62 – 2.19 26.62 – 2.19	Depositor EDS
% Data completeness (in resolution range)	96.0 (26.62-2.19) 82.2 (26.62-2.19)	Depositor EDS
R_{merge}	0.08	Depositor
R_{sym}	(Not available)	Depositor
$\langle I/\sigma(I) \rangle$ ¹	0.77 (at 2.20Å)	Xtriage
Refinement program	PHENIX 1.8.2_1309	Depositor
R, R_{free}	0.199 , 0.235 0.200 , 0.236	Depositor DCC
R_{free} test set	2000 reflections (1.69%)	wwPDB-VP
Wilson B-factor (Å ²)	38.0	Xtriage
Anisotropy	0.716	Xtriage
Bulk solvent k_{sol} (e/Å ³), B_{sol} (Å ²)	0.38 , 60.5	EDS
L-test for twinning ²	$\langle L \rangle = 0.49$, $\langle L^2 \rangle = 0.32$	Xtriage
Estimated twinning fraction	No twinning to report.	Xtriage
F_o, F_c correlation	0.96	EDS
Total number of atoms	11549	wwPDB-VP
Average B, all atoms (Å ²)	42.0	wwPDB-VP

Xtriage's analysis on translational NCS is as follows: *The largest off-origin peak in the Patterson function is 4.38% of the height of the origin peak. No significant pseudotranslation is detected.*

¹Intensities estimated from amplitudes.

²Theoretical values of $\langle |L| \rangle$, $\langle L^2 \rangle$ for acentric reflections are 0.5, 0.333 respectively for untwinned datasets, and 0.375, 0.2 for perfectly twinned datasets.

5 Model quality [i](#)

5.1 Standard geometry [i](#)

Bond lengths and bond angles in the following residue types are not validated in this section: K, PO4, MG, 1PG

The Z score for a bond length (or angle) is the number of standard deviations the observed value is removed from the expected value. A bond length (or angle) with $|Z| > 5$ is considered an outlier worth inspection. RMSZ is the root-mean-square of all Z scores of the bond lengths (or angles).

Mol	Chain	Bond lengths		Bond angles	
		RMSZ	# Z >5	RMSZ	# Z >5
1	A	0.39	0/5538	0.53	1/7525 (0.0%)
1	B	0.37	0/5538	0.51	1/7525 (0.0%)
All	All	0.38	0/11076	0.52	2/15050 (0.0%)

There are no bond length outliers.

All (2) bond angle outliers are listed below:

Mol	Chain	Res	Type	Atoms	Z	Observed(°)	Ideal(°)
1	A	673	LEU	CA-CB-CG	6.17	129.49	115.30
1	B	673	LEU	CA-CB-CG	6.04	129.19	115.30

There are no chirality outliers.

There are no planarity outliers.

5.2 Too-close contacts [i](#)

In the following table, the Non-H and H(model) columns list the number of non-hydrogen atoms and hydrogen atoms in the chain respectively. The H(added) column lists the number of hydrogen atoms added and optimized by MolProbity. The Clashes column lists the number of clashes within the asymmetric unit, whereas Symm-Clashes lists symmetry related clashes.

Mol	Chain	Non-H	H(model)	H(added)	Clashes	Symm-Clashes
1	A	5432	0	5573	54	0
1	B	5432	0	5573	44	0
2	A	10	0	0	0	0
2	B	10	0	0	1	0
3	A	5	0	0	0	0
3	B	5	0	0	0	0
4	A	1	0	0	0	0

Continued on next page...

Continued from previous page...

Mol	Chain	Non-H	H(model)	H(added)	Clashes	Symm-Clashes
4	B	1	0	0	0	0
5	A	85	0	120	6	0
5	B	34	0	48	0	0
6	A	301	0	0	4	0
6	B	233	0	0	2	0
All	All	11549	0	11314	95	0

The all-atom clashscore is defined as the number of clashes found per 1000 atoms (including hydrogen atoms). The all-atom clashscore for this structure is 4.

All (95) close contacts within the same asymmetric unit are listed below, sorted by their clash magnitude.

Atom-1	Atom-2	Interatomic distance (Å)	Clash overlap (Å)
1:A:570:VAL:HG22	1:B:570:VAL:HG22	1.65	0.79
1:A:640:LYS:HG3	5:A:1012:1PG:H62	1.67	0.76
1:B:324:MET:SD	6:B:1103:HOH:O	2.43	0.76
1:A:273:ASN:HB3	1:A:276:VAL:HG23	1.67	0.75
1:B:264:ARG:NH2	1:B:613:ASN:OD1	2.22	0.73
1:B:520:HIS:NE2	1:B:524:GLU:OE2	2.27	0.68
1:A:441:ARG:NH2	1:B:606:GLU:OE1	2.27	0.68
1:A:343:LEU:HA	1:A:346:THR:HG22	1.77	0.67
1:B:351:ILE:HG23	1:B:356:GLU:HB2	1.79	0.65
1:B:273:ASN:HB3	1:B:276:VAL:HG23	1.77	0.64
1:A:250:LYS:HG3	1:A:727:ASP:HB3	1.80	0.63
1:A:363:LYS:NZ	6:A:1103:HOH:O	2.32	0.62
1:A:606:GLU:OE1	1:B:441:ARG:NH2	2.32	0.62
1:B:179:VAL:HG11	1:B:354:VAL:HG12	1.82	0.61
1:A:663:GLU:H	1:A:663:GLU:CD	2.06	0.58
1:A:587:TYR:OH	1:B:587:TYR:OH	2.17	0.57
1:A:249:THR:HG23	1:A:250:LYS:HD2	1.87	0.56
1:A:640:LYS:HB2	5:A:1012:1PG:H92	1.86	0.56
1:B:250:LYS:HG3	1:B:727:ASP:HB3	1.89	0.55
1:A:408:VAL:HG12	1:A:484:VAL:HG13	1.90	0.53
1:A:362:LYS:NZ	6:A:1111:HOH:O	2.40	0.53
1:A:717:LYS:O	1:A:721:ILE:HG12	2.09	0.53
1:A:500:ASP:HA	1:A:536:THR:HG23	1.89	0.52
1:A:659:LEU:HB3	1:A:762:LEU:HD22	1.90	0.52
1:A:486:ALA:HB2	1:A:550:LEU:HB3	1.92	0.51
1:A:552:SER:HB2	1:A:673:LEU:HD22	1.93	0.51
1:B:93:TYR:CD2	1:B:154:LEU:HD22	2.46	0.51
1:A:168:ASN:HB2	1:A:508:ASN:HB3	1.93	0.50

Continued on next page...

Continued from previous page...

Atom-1	Atom-2	Interatomic distance (Å)	Clash overlap (Å)
1:A:273:ASN:HB3	1:A:276:VAL:CG2	2.39	0.50
1:B:295:LEU:HD12	1:B:493:ILE:HD11	1.94	0.50
1:B:643:ILE:HB	1:B:644:PRO:HD3	1.93	0.49
1:A:560:VAL:HG13	1:A:565:ILE:HB	1.94	0.49
1:B:2:GLY:N	1:B:320:GLU:OE1	2.44	0.49
1:B:250:LYS:HD2	1:B:250:LYS:N	2.27	0.49
1:B:153:SER:HB3	1:B:237:MET:HG2	1.95	0.49
1:B:168:ASN:HB2	1:B:508:ASN:HB3	1.95	0.48
1:B:626:ASP:OD2	1:B:629:THR:OG1	2.30	0.48
1:A:250:LYS:HD3	1:A:731:ASP:CB	2.44	0.47
1:A:537:ALA:O	1:A:541:LYS:HD3	2.15	0.47
1:A:521:ARG:HE	1:A:525:ARG:NH2	2.13	0.47
1:A:460:ILE:HD11	1:B:588:TRP:CD1	2.51	0.46
1:A:597:VAL:HG11	1:A:728:PRO:HB3	1.97	0.46
1:B:560:VAL:HG13	1:B:565:ILE:HB	1.98	0.45
1:A:2:GLY:N	1:A:320:GLU:OE2	2.49	0.45
1:A:521:ARG:NH1	6:A:1108:HOH:O	2.38	0.45
1:A:636:ASP:OD1	5:A:1012:1PG:H111	2.16	0.45
5:A:1013:1PG:H51	5:A:1013:1PG:H71	1.50	0.45
1:A:570:VAL:HG22	1:B:570:VAL:CG2	2.42	0.45
1:A:346:THR:HG23	1:A:347:ASP:OD2	2.16	0.45
1:A:363:LYS:HD3	1:A:363:LYS:HA	1.69	0.45
1:A:163:ILE:HG12	1:A:192:VAL:HB	1.98	0.45
1:B:118:SER:HG	1:B:120:SER:HG	1.56	0.45
1:B:694:LYS:HE2	1:B:694:LYS:HB3	1.71	0.45
1:A:250:LYS:N	1:A:250:LYS:HD2	2.31	0.44
1:A:513:ALA:HA	1:A:518:MET:CE	2.48	0.44
1:B:764:LYS:NZ	6:B:1106:HOH:O	2.39	0.44
1:B:438:ASP:OD2	1:B:441:ARG:NH1	2.51	0.44
1:A:516:ALA:HB3	1:A:518:MET:CE	2.47	0.44
1:A:643:ILE:HB	1:A:644:PRO:HD3	2.00	0.44
1:A:694:LYS:HB3	1:A:694:LYS:HE2	1.71	0.44
1:A:663:GLU:O	1:A:666:SER:HB2	2.18	0.43
1:A:6:LEU:HD12	1:A:7:PRO:HD2	1.99	0.43
1:B:249:THR:HG23	1:B:250:LYS:HD2	1.99	0.43
1:A:168:ASN:OD1	1:A:169:ALA:N	2.49	0.43
1:A:438:ASP:OD2	1:A:441:ARG:NH1	2.51	0.43
1:B:273:ASN:HB3	1:B:276:VAL:CG2	2.48	0.43
1:A:282:GLY:HA2	1:A:285:VAL:HG22	2.00	0.42
1:B:357:ILE:HD13	1:B:529:LEU:HD23	2.00	0.42
5:A:1010:1PG:H61	6:A:1282:HOH:O	2.19	0.42

Continued on next page...

Continued from previous page...

Atom-1	Atom-2	Interatomic distance (Å)	Clash overlap (Å)
1:B:274:PRO:HD2	1:B:608:VAL:HG13	2.02	0.42
1:B:196:LEU:HA	1:B:196:LEU:HD23	1.91	0.42
1:A:287:ASP:N	1:A:287:ASP:OD1	2.52	0.42
1:B:291:MET:O	1:B:294:ASP:HB3	2.20	0.42
1:B:486:ALA:HB2	1:B:550:LEU:HB3	2.01	0.42
1:B:520:HIS:O	1:B:524:GLU:HG3	2.18	0.42
1:A:518:MET:HB2	1:A:518:MET:HE3	1.86	0.42
1:B:310:ALA:C	1:B:324:MET:HE1	2.41	0.41
1:B:35:LYS:O	1:B:37:LYS:HG2	2.20	0.41
1:A:479:MET:SD	1:A:557:GLY:HA3	2.61	0.41
1:B:480:TYR:O	1:B:484:VAL:HB	2.20	0.41
1:B:448:VAL:HA	1:B:690:TRP:CZ2	2.54	0.41
1:A:128:LYS:HA	1:A:128:LYS:HD3	1.84	0.41
1:A:648:LEU:HA	5:A:1009:1PG:H51	2.03	0.41
1:B:404:LEU:HA	1:B:404:LEU:HD23	1.87	0.41
1:A:120:SER:HA	1:A:121:PRO:HD3	1.88	0.41
1:A:352:LYS:HB2	1:A:352:LYS:HE3	1.82	0.41
1:B:717:LYS:O	1:B:721:ILE:HG12	2.20	0.40
1:A:651:LEU:HD23	1:A:651:LEU:HA	1.89	0.40
1:A:404:LEU:HD23	1:A:404:LEU:HA	1.90	0.40
2:B:1001:PO4:P	2:B:1002:PO4:O1	2.80	0.40
1:B:552:SER:HB2	1:B:673:LEU:HD22	2.04	0.40
1:A:762:LEU:O	1:A:766:PHE:HD2	2.04	0.40
1:B:27:LEU:HA	1:B:27:LEU:HD12	1.87	0.40
1:B:470:ILE:O	1:B:474:PHE:HB2	2.21	0.40
1:B:537:ALA:O	1:B:541:LYS:HD3	2.21	0.40

There are no symmetry-related clashes.

5.3 Torsion angles ⓘ

5.3.1 Protein backbone ⓘ

In the following table, the Percentiles column shows the percent Ramachandran outliers of the chain as a percentile score with respect to all X-ray entries followed by that with respect to entries of similar resolution.

The Analysed column shows the number of residues for which the backbone conformation was analysed, and the total number of residues.

Mol	Chain	Analysed	Favoured	Allowed	Outliers	Percentiles	
1	A	736/766 (96%)	725 (98%)	11 (2%)	0	100	100
1	B	736/766 (96%)	725 (98%)	11 (2%)	0	100	100
All	All	1472/1532 (96%)	1450 (98%)	22 (2%)	0	100	100

There are no Ramachandran outliers to report.

5.3.2 Protein sidechains ⓘ

In the following table, the Percentiles column shows the percent sidechain outliers of the chain as a percentile score with respect to all X-ray entries followed by that with respect to entries of similar resolution.

The Analysed column shows the number of residues for which the sidechain conformation was analysed, and the total number of residues.

Mol	Chain	Analysed	Rotameric	Outliers	Percentiles	
1	A	568/588 (97%)	543 (96%)	25 (4%)	28	33
1	B	568/588 (97%)	545 (96%)	23 (4%)	31	37
All	All	1136/1176 (97%)	1088 (96%)	48 (4%)	30	35

All (48) residues with a non-rotameric sidechain are listed below:

Mol	Chain	Res	Type
1	A	27	LEU
1	A	115	GLU
1	A	122	GLN
1	A	237	MET
1	A	250	LYS
1	A	287	ASP
1	A	340	LEU
1	A	346	THR
1	A	347	ASP
1	A	361	LEU
1	A	408	VAL
1	A	474	PHE
1	A	484	VAL
1	A	502	TYR
1	A	508	ASN
1	A	536	THR
1	A	541	LYS
1	A	550	LEU

Continued on next page...

Continued from previous page...

Mol	Chain	Res	Type
1	A	570	VAL
1	A	663	GLU
1	A	673	LEU
1	A	677	VAL
1	A	737	LEU
1	A	738	ASN
1	A	762	LEU
1	B	9	LEU
1	B	27	LEU
1	B	115	GLU
1	B	148	LEU
1	B	237	MET
1	B	250	LYS
1	B	285	VAL
1	B	287	ASP
1	B	308	VAL
1	B	324	MET
1	B	346	THR
1	B	408	VAL
1	B	474	PHE
1	B	502	TYR
1	B	508	ASN
1	B	541	LYS
1	B	550	LEU
1	B	673	LEU
1	B	677	VAL
1	B	737	LEU
1	B	738	ASN
1	B	746	VAL
1	B	762	LEU

Some sidechains can be flipped to improve hydrogen bonding and reduce clashes. All (1) such sidechains are listed below:

Mol	Chain	Res	Type
1	A	122	GLN

5.3.3 RNA ⓘ

There are no RNA molecules in this entry.

5.4 Non-standard residues in protein, DNA, RNA chains [i](#)

There are no non-standard protein/DNA/RNA residues in this entry.

5.5 Carbohydrates [i](#)

There are no carbohydrates in this entry.

5.6 Ligand geometry [i](#)

Of 23 ligands modelled in this entry, 12 are monoatomic - leaving 11 for Mogul analysis.

In the following table, the Counts columns list the number of bonds (or angles) for which Mogul statistics could be retrieved, the number of bonds (or angles) that are observed in the model and the number of bonds (or angles) that are defined in the Chemical Component Dictionary. The Link column lists molecule types, if any, to which the group is linked. The Z score for a bond length (or angle) is the number of standard deviations the observed value is removed from the expected value. A bond length (or angle) with $|Z| > 2$ is considered an outlier worth inspection. RMSZ is the root-mean-square of all Z scores of the bond lengths (or angles).

Mol	Type	Chain	Res	Link	Bond lengths			Bond angles		
					Counts	RMSZ	$\# Z > 2$	Counts	RMSZ	$\# Z > 2$
5	1PG	A	1012	-	16,16,16	0.81	0	15,15,15	0.29	0
2	PO4	A	1001	3,4	4,4,4	1.22	1 (25%)	6,6,6	0.63	0
5	1PG	B	1009	-	16,16,16	0.81	0	15,15,15	0.40	0
5	1PG	A	1011	-	16,16,16	0.81	0	15,15,15	0.36	0
5	1PG	A	1010	-	16,16,16	0.79	0	15,15,15	0.37	0
5	1PG	B	1010	-	16,16,16	0.82	0	15,15,15	0.38	0
2	PO4	B	1001	3,4	4,4,4	1.12	1 (25%)	6,6,6	0.68	0
5	1PG	A	1013	-	16,16,16	0.81	0	15,15,15	0.27	0
5	1PG	A	1009	-	16,16,16	0.85	0	15,15,15	0.50	0
2	PO4	B	1002	3	4,4,4	0.74	0	6,6,6	1.11	1 (16%)
2	PO4	A	1002	3	4,4,4	0.88	0	6,6,6	1.29	1 (16%)

In the following table, the Chirals column lists the number of chiral outliers, the number of chiral centers analysed, the number of these observed in the model and the number defined in the Chemical Component Dictionary. Similar counts are reported in the Torsion and Rings columns. '-' means no outliers of that kind were identified.

Mol	Type	Chain	Res	Link	Chirals	Torsions	Rings
5	1PG	A	1012	-	-	8/14/14/14	-
5	1PG	B	1009	-	-	7/14/14/14	-

Continued on next page...

Continued from previous page...

Mol	Type	Chain	Res	Link	Chirals	Torsions	Rings
5	1PG	A	1011	-	-	10/14/14/14	-
5	1PG	A	1010	-	-	8/14/14/14	-
5	1PG	B	1010	-	-	7/14/14/14	-
5	1PG	A	1013	-	-	8/14/14/14	-
5	1PG	A	1009	-	-	6/14/14/14	-

All (2) bond length outliers are listed below:

Mol	Chain	Res	Type	Atoms	Z	Observed(Å)	Ideal(Å)
2	A	1001	PO4	P-O1	2.33	1.56	1.50
2	B	1001	PO4	P-O1	2.03	1.55	1.50

All (2) bond angle outliers are listed below:

Mol	Chain	Res	Type	Atoms	Z	Observed(°)	Ideal(°)
2	A	1002	PO4	O3-P-O1	-2.27	102.61	110.89
2	B	1002	PO4	O4-P-O1	-2.04	103.43	110.89

There are no chirality outliers.

All (54) torsion outliers are listed below:

Mol	Chain	Res	Type	Atoms
5	A	1013	1PG	C7-C6-O3-C5
5	B	1009	1PG	O4-C8-C9-O5
5	A	1011	1PG	O1-C2-C3-O2
5	B	1010	1PG	O3-C6-C7-O4
5	A	1011	1PG	O3-C6-C7-O4
5	A	1011	1PG	O4-C8-C9-O5
5	B	1009	1PG	O2-C4-C5-O3
5	B	1009	1PG	O3-C6-C7-O4
5	A	1012	1PG	O4-C8-C9-O5
5	A	1011	1PG	O5-C10-C11-O6
5	A	1010	1PG	O2-C4-C5-O3
5	A	1011	1PG	O2-C4-C5-O3
5	B	1009	1PG	O5-C10-C11-O6
5	A	1013	1PG	O5-C10-C11-O6
5	A	1012	1PG	C8-C9-O5-C10
5	A	1010	1PG	O4-C8-C9-O5
5	A	1010	1PG	O3-C6-C7-O4
5	A	1010	1PG	O1-C2-C3-O2

Continued on next page...

Continued from previous page...

Mol	Chain	Res	Type	Atoms
5	A	1012	1PG	O5-C10-C11-O6
5	B	1010	1PG	O4-C8-C9-O5
5	A	1013	1PG	O4-C8-C9-O5
5	A	1013	1PG	O2-C4-C5-O3
5	A	1012	1PG	C5-C4-O2-C3
5	B	1009	1PG	C3-C2-O1-C1
5	A	1012	1PG	C2-C3-O2-C4
5	A	1011	1PG	C4-C5-O3-C6
5	A	1012	1PG	C9-C8-O4-C7
5	A	1011	1PG	C6-C7-O4-C8
5	A	1009	1PG	C8-C9-O5-C10
5	B	1010	1PG	O1-C2-C3-O2
5	A	1010	1PG	C6-C7-O4-C8
5	A	1013	1PG	C2-C3-O2-C4
5	A	1010	1PG	C4-C5-O3-C6
5	A	1012	1PG	O2-C4-C5-O3
5	A	1013	1PG	C4-C5-O3-C6
5	B	1009	1PG	C8-C9-O5-C10
5	A	1010	1PG	C2-C3-O2-C4
5	A	1011	1PG	C7-C6-O3-C5
5	A	1013	1PG	O1-C2-C3-O2
5	B	1010	1PG	C5-C4-O2-C3
5	A	1009	1PG	O5-C10-C11-O6
5	A	1009	1PG	O1-C2-C3-O2
5	B	1010	1PG	C4-C5-O3-C6
5	A	1011	1PG	C8-C9-O5-C10
5	A	1010	1PG	C3-C2-O1-C1
5	A	1009	1PG	C11-C10-O5-C9
5	B	1010	1PG	O2-C4-C5-O3
5	B	1010	1PG	C9-C8-O4-C7
5	A	1009	1PG	O3-C6-C7-O4
5	A	1009	1PG	C9-C8-O4-C7
5	A	1012	1PG	O3-C6-C7-O4
5	A	1011	1PG	C5-C4-O2-C3
5	B	1009	1PG	C7-C6-O3-C5
5	A	1013	1PG	O3-C6-C7-O4

There are no ring outliers.

6 monomers are involved in 7 short contacts:

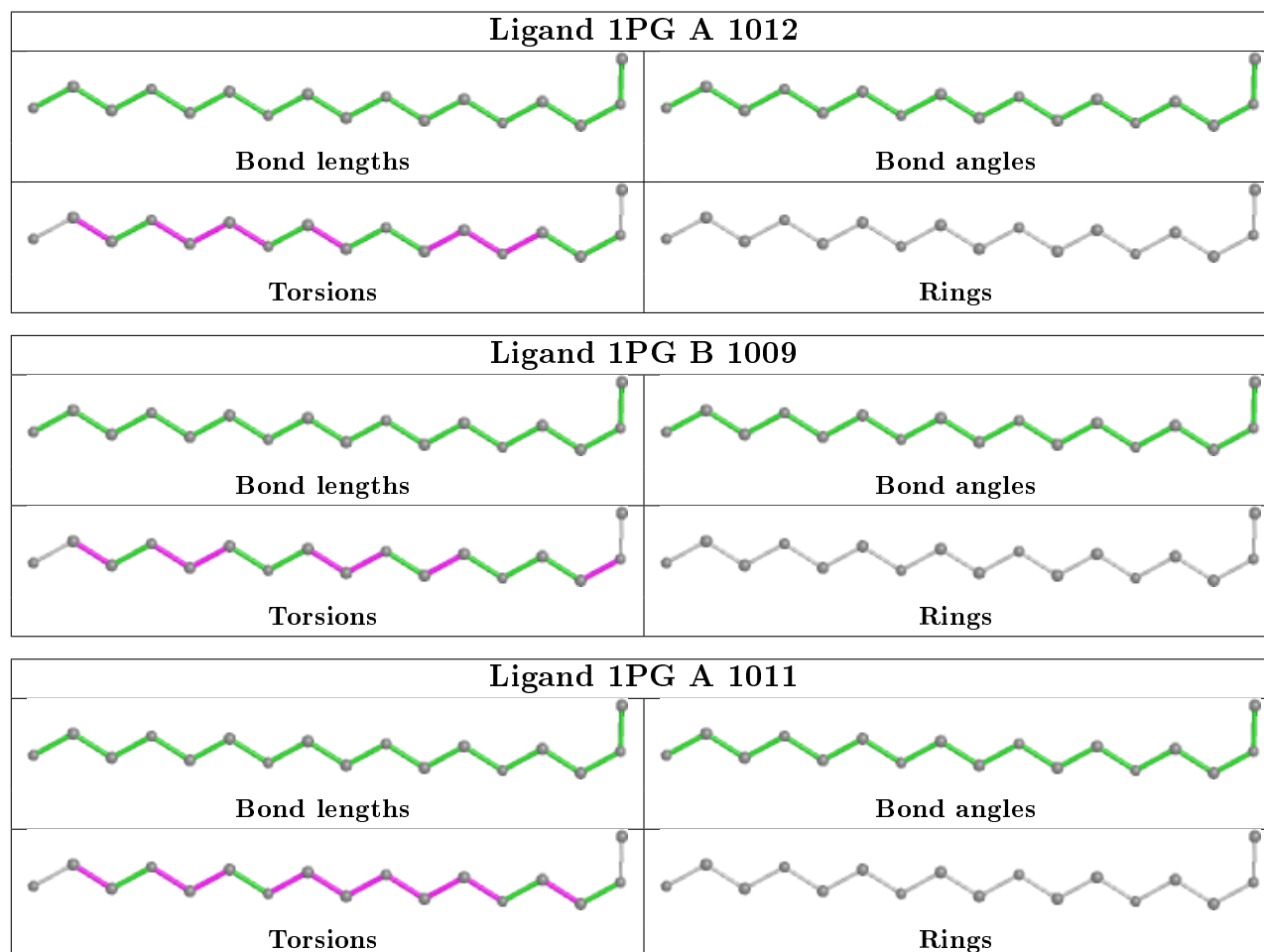
Mol	Chain	Res	Type	Clashes	Symm-Clashes
5	A	1012	1PG	3	0

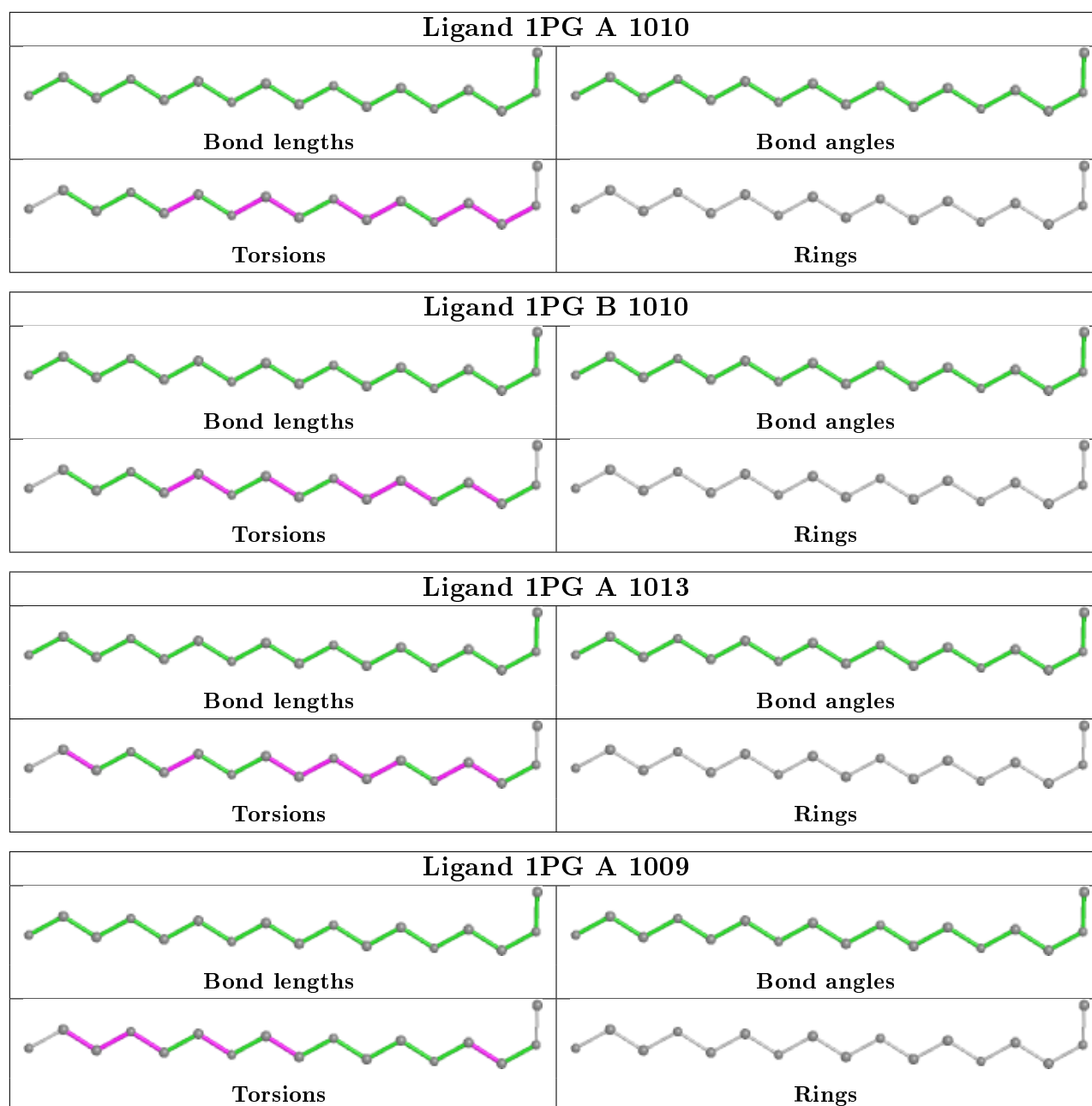
Continued on next page...

Continued from previous page...

Mol	Chain	Res	Type	Clashes	Symm-Clashes
5	A	1010	1PG	1	0
2	B	1001	PO4	1	0
5	A	1013	1PG	1	0
5	A	1009	1PG	1	0
2	B	1002	PO4	1	0

The following is a two-dimensional graphical depiction of Mogul quality analysis of bond lengths, bond angles, torsion angles, and ring geometry for all instances of the Ligand of Interest. In addition, ligands with molecular weight > 250 and outliers as shown on the validation Tables will also be included. For torsion angles, if less than 5% of the Mogul distribution of torsion angles is within 10 degrees of the torsion angle in question, then that torsion angle is considered an outlier. Any bond that is central to one or more torsion angles identified as an outlier by Mogul will be highlighted in the graph. For rings, the root-mean-square deviation (RMSD) between the ring in question and similar rings identified by Mogul is calculated over all ring torsion angles. If the average RMSD is greater than 60 degrees and the minimal RMSD between the ring in question and any Mogul-identified rings is also greater than 60 degrees, then that ring is considered an outlier. The outliers are highlighted in purple. The color gray indicates Mogul did not find sufficient equivalents in the CSD to analyse the geometry.





5.7 Other polymers [i](#)

There are no such residues in this entry.

5.8 Polymer linkage issues [i](#)

There are no chain breaks in this entry.

6 Fit of model and data

6.1 Protein, DNA and RNA chains

In the following table, the column labelled ‘#RSRZ> 2’ contains the number (and percentage) of RSRZ outliers, followed by percent RSRZ outliers for the chain as percentile scores relative to all X-ray entries and entries of similar resolution. The OWAB column contains the minimum, median, 95th percentile and maximum values of the occupancy-weighted average B-factor per residue. The column labelled ‘Q< 0.9’ lists the number of (and percentage) of residues with an average occupancy less than 0.9.

Mol	Chain	Analysed	<RSRZ>	#RSRZ>2		OWAB(Å ²)	Q<0.9
1	A	740/766 (96%)	0.04	28 (3%)	40 41	26, 37, 53, 85	0
1	B	740/766 (96%)	0.24	47 (6%)	19 20	28, 44, 66, 91	0
All	All	1480/1532 (96%)	0.14	75 (5%)	28 29	26, 40, 60, 91	0

All (75) RSRZ outliers are listed below:

Mol	Chain	Res	Type	RSRZ
1	B	41	VAL	10.7
1	A	41	VAL	9.9
1	B	2	GLY	8.3
1	A	348	PHE	8.1
1	A	40	ALA	8.1
1	B	40	ALA	8.0
1	B	766	PHE	6.3
1	A	68	HIS	6.0
1	A	616	PRO	5.9
1	B	39	SER	5.8
1	B	68	HIS	5.6
1	A	349	PHE	5.1
1	B	616	PRO	4.9
1	A	766	PHE	4.9
1	B	615	ILE	4.8
1	B	348	PHE	4.7
1	B	72	VAL	4.7
1	B	3	ALA	4.7
1	A	765	ILE	4.5
1	A	67	ASP	4.5
1	B	69	ASN	4.4
1	B	352	LYS	4.3
1	B	349	PHE	4.3
1	A	39	SER	4.2

Continued on next page...

Continued from previous page...

Mol	Chain	Res	Type	RSRZ
1	B	614	THR	3.9
1	B	520	HIS	3.9
1	B	622	THR	3.7
1	B	214	ILE	3.6
1	B	617	GLY	3.5
1	B	623	ALA	3.4
1	A	623	ALA	3.3
1	B	70	VAL	3.3
1	A	3	ALA	3.3
1	A	617	GLY	3.2
1	B	350	GLU	3.1
1	B	67	ASP	3.1
1	B	765	ILE	3.1
1	B	629	THR	3.1
1	A	622	THR	3.0
1	A	624	LYS	3.0
1	A	2	GLY	2.9
1	A	505	ILE	2.8
1	B	187	PHE	2.7
1	B	402	TRP	2.7
1	A	749	LEU	2.7
1	A	520	HIS	2.6
1	B	31	LEU	2.6
1	B	353	ALA	2.5
1	A	31	LEU	2.5
1	B	618	LEU	2.5
1	B	71	VAL	2.5
1	B	38	LEU	2.5
1	A	350	GLU	2.5
1	B	505	ILE	2.5
1	B	620	GLU	2.4
1	B	610	ARG	2.4
1	B	498	ALA	2.4
1	B	499	ILE	2.3
1	B	9	LEU	2.3
1	B	566	THR	2.3
1	A	9	LEU	2.3
1	B	502	TYR	2.3
1	B	484	VAL	2.2
1	A	69	ASN	2.2
1	A	117	PHE	2.2
1	A	72	VAL	2.1

Continued on next page...

Continued from previous page...

Mol	Chain	Res	Type	RSRZ
1	B	308	VAL	2.1
1	B	619	MET	2.1
1	B	175	ALA	2.1
1	B	509	ALA	2.1
1	B	521	ARG	2.1
1	B	90	PHE	2.0
1	A	347	ASP	2.0
1	A	402	TRP	2.0
1	A	307	LEU	2.0

6.2 Non-standard residues in protein, DNA, RNA chains [i](#)

There are no non-standard protein/DNA/RNA residues in this entry.

6.3 Carbohydrates [i](#)

There are no carbohydrates in this entry.

6.4 Ligands [i](#)

In the following table, the Atoms column lists the number of modelled atoms in the group and the number defined in the chemical component dictionary. The B-factors column lists the minimum, median, 95th percentile and maximum values of B factors of atoms in the group. The column labelled 'Q< 0.9' lists the number of atoms with occupancy less than 0.9.

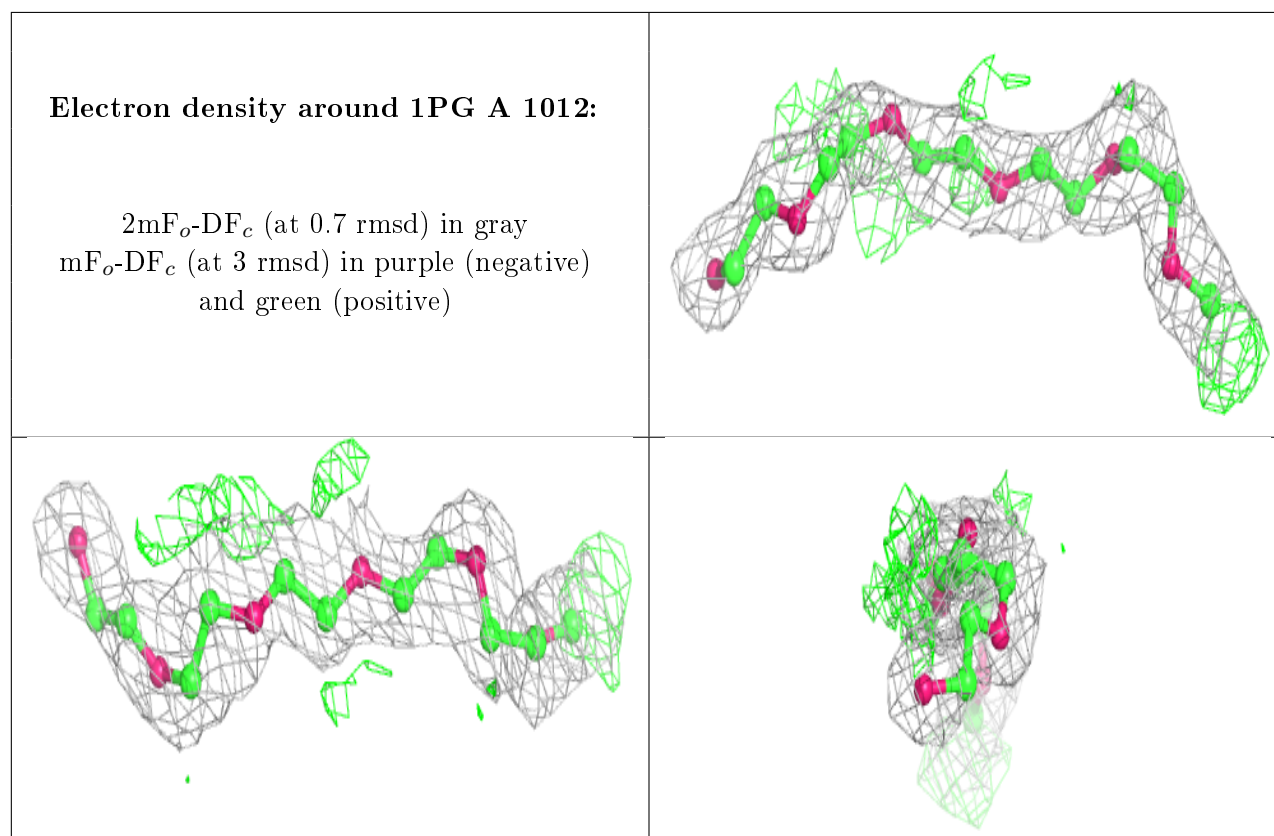
Mol	Type	Chain	Res	Atoms	RSCC	RSR	B-factors(\AA^2)	Q<0.9
5	1PG	A	1012	17/17	0.73	0.33	52,63,75,78	0
5	1PG	B	1010	17/17	0.76	0.29	44,55,68,69	0
5	1PG	A	1009	17/17	0.80	0.24	37,49,66,67	0
5	1PG	A	1010	17/17	0.82	0.22	45,60,72,72	0
5	1PG	B	1009	17/17	0.82	0.23	43,54,74,74	0
5	1PG	A	1013	17/17	0.82	0.33	47,57,65,66	0
5	1PG	A	1011	17/17	0.86	0.22	48,58,73,74	0
2	PO4	B	1001	5/5	0.89	0.13	32,36,41,54	0
3	MG	B	1007	1/1	0.90	0.09	43,43,43,43	0
2	PO4	A	1001	5/5	0.93	0.11	27,29,34,48	0
3	MG	A	1005	1/1	0.93	0.20	28,28,28,28	0
4	K	B	1008	1/1	0.94	0.06	56,56,56,56	0
3	MG	B	1004	1/1	0.94	0.11	43,43,43,43	0
3	MG	B	1005	1/1	0.95	0.15	37,37,37,37	0

Continued on next page...

Continued from previous page...

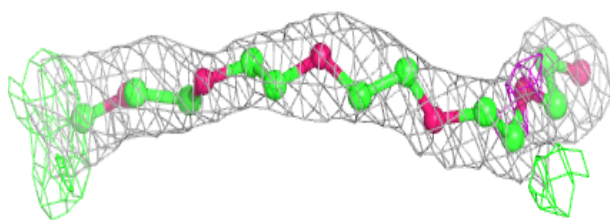
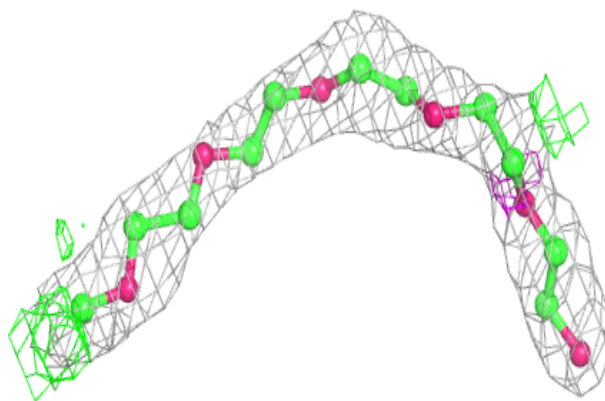
Mol	Type	Chain	Res	Atoms	RSCC	RSR	B-factors(\AA^2)	Q<0.9
3	MG	A	1003	1/1	0.96	0.10	32,32,32,32	0
3	MG	B	1006	1/1	0.96	0.17	37,37,37,37	0
3	MG	A	1004	1/1	0.97	0.10	35,35,35,35	0
3	MG	A	1006	1/1	0.97	0.15	34,34,34,34	0
4	K	A	1008	1/1	0.98	0.07	45,45,45,45	0
3	MG	A	1007	1/1	0.98	0.13	34,34,34,34	0
2	PO4	A	1002	5/5	0.98	0.15	29,31,34,36	0
3	MG	B	1003	1/1	0.99	0.10	40,40,40,40	0
2	PO4	B	1002	5/5	0.99	0.11	34,37,39,41	0

The following is a graphical depiction of the model fit to experimental electron density of all instances of the Ligand of Interest. In addition, ligands with molecular weight > 250 and outliers as shown on the geometry validation Tables will also be included. Each fit is shown from different orientation to approximate a three-dimensional view.

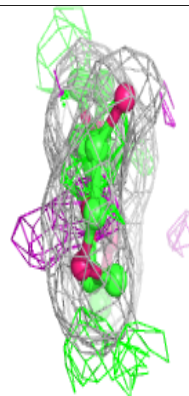
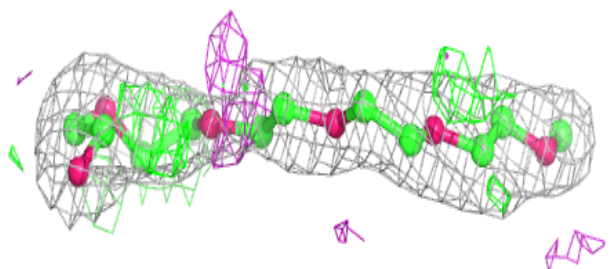
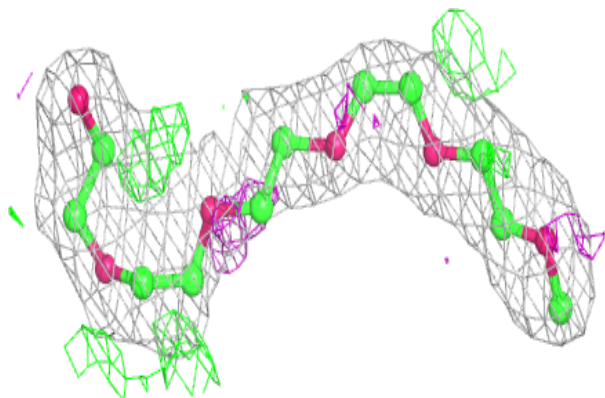


Electron density around 1PG B 1010:

$2mF_o-DF_c$ (at 0.7 rmsd) in gray
 mF_o-DF_c (at 3 rmsd) in purple (negative)
and green (positive)

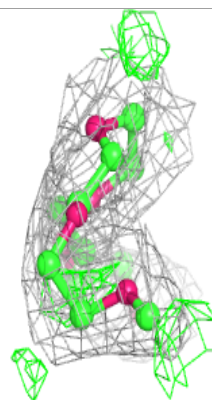
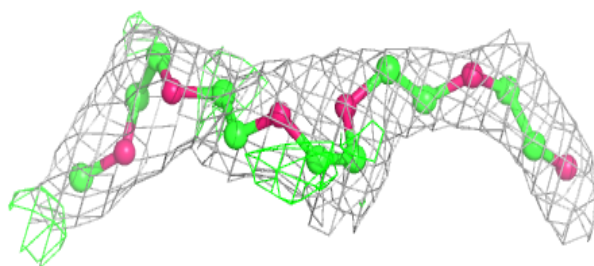
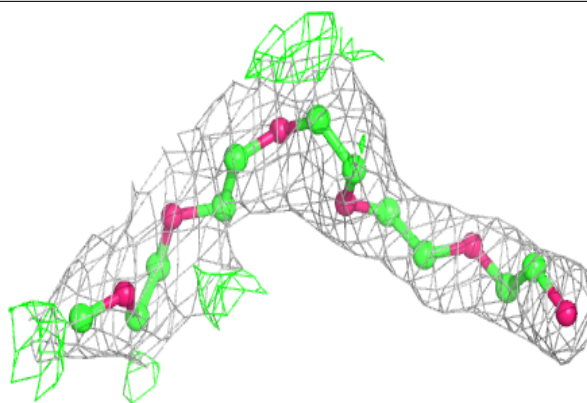
**Electron density around 1PG A 1009:**

$2mF_o-DF_c$ (at 0.7 rmsd) in gray
 mF_o-DF_c (at 3 rmsd) in purple (negative)
and green (positive)

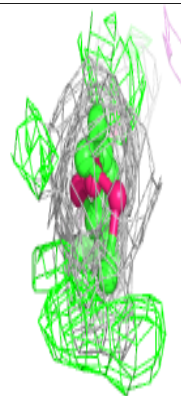
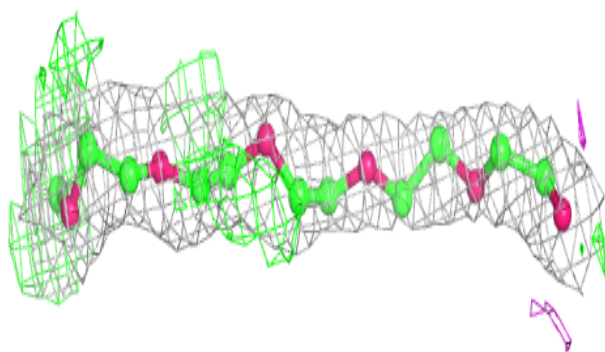
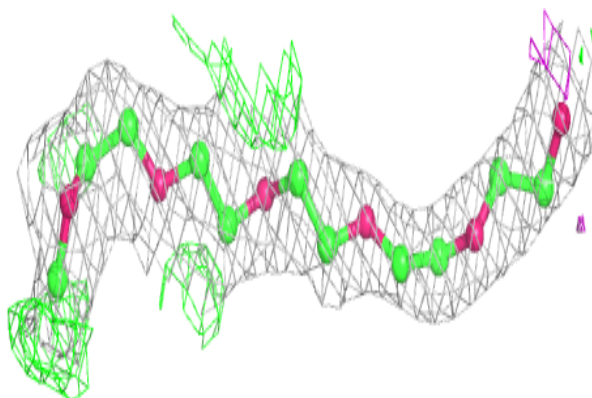


Electron density around 1PG A 1010:

$2mF_o-DF_c$ (at 0.7 rmsd) in gray
 mF_o-DF_c (at 3 rmsd) in purple (negative)
and green (positive)

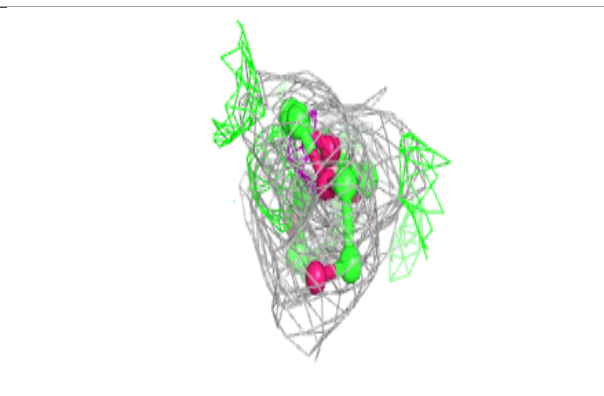
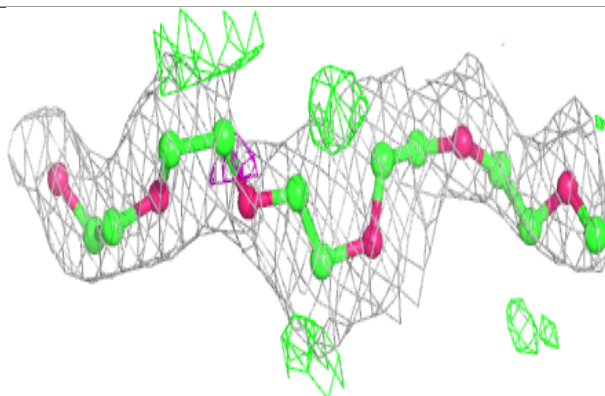
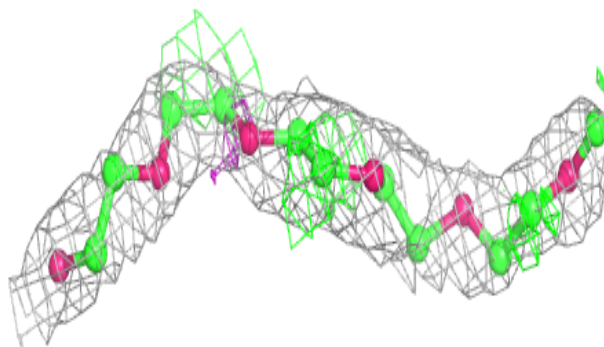
**Electron density around 1PG B 1009:**

$2mF_o-DF_c$ (at 0.7 rmsd) in gray
 mF_o-DF_c (at 3 rmsd) in purple (negative)
and green (positive)

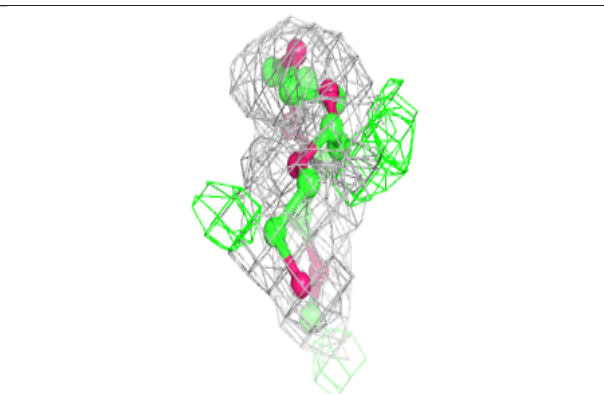
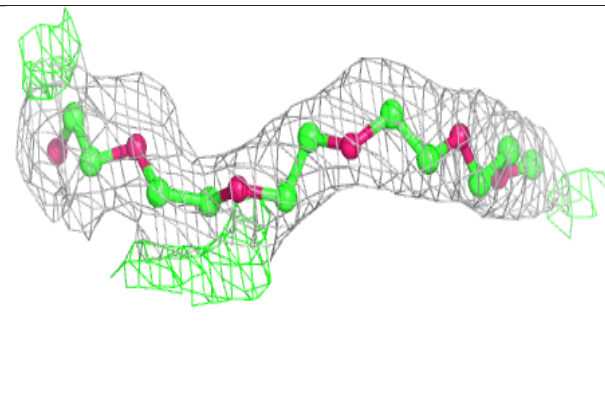
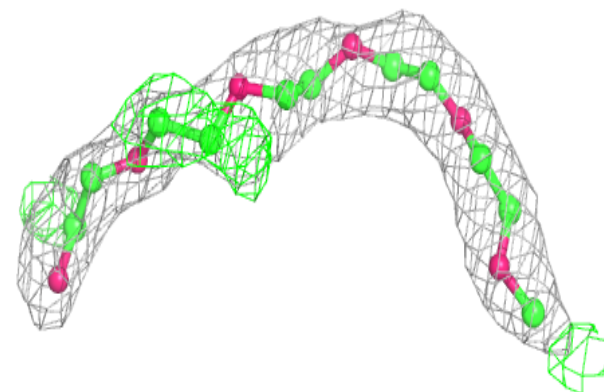


Electron density around 1PG A 1013:

$2mF_o-DF_c$ (at 0.7 rmsd) in gray
 mF_o-DF_c (at 3 rmsd) in purple (negative)
and green (positive)

**Electron density around 1PG A 1011:**

$2mF_o-DF_c$ (at 0.7 rmsd) in gray
 mF_o-DF_c (at 3 rmsd) in purple (negative)
and green (positive)



6.5 Other polymers

There are no such residues in this entry.