



Full wwPDB X-ray Structure Validation Report ⓘ

May 27, 2020 – 10:41 pm BST

PDB ID : 3AGC
Title : F218V mutant of the substrate-bound red chlorophyll catabolite reductase from *Arabidopsis thaliana*
Authors : Sugishima, M.; Fukuyama, K.
Deposited on : 2010-03-30
Resolution : 2.00 Å(reported)

This is a Full wwPDB X-ray Structure Validation Report for a publicly released PDB entry.

We welcome your comments at validation@mail.wwpdb.org

A user guide is available at

<https://www.wwpdb.org/validation/2017/XrayValidationReportHelp>

with specific help available everywhere you see the ⓘ symbol.

The following versions of software and data (see [references ⓘ](#)) were used in the production of this report:

MolProbity	:	4.02b-467
Mogul	:	1.8.5 (274361), CSD as541be (2020)
Xtriage (Phenix)	:	1.13
EDS	:	2.11
buster-report	:	1.1.7 (2018)
Percentile statistics	:	20191225.v01 (using entries in the PDB archive December 25th 2019)
Refmac	:	5.8.0158
CCP4	:	7.0.044 (Gargrove)
Ideal geometry (proteins)	:	Engh & Huber (2001)
Ideal geometry (DNA, RNA)	:	Parkinson et al. (1996)
Validation Pipeline (wwPDB-VP)	:	2.11

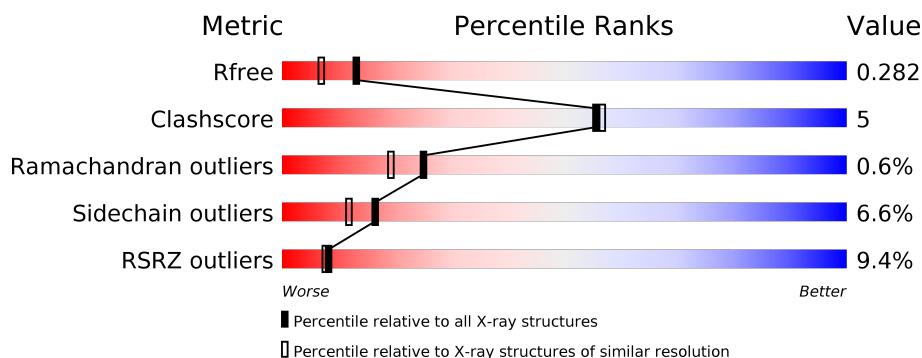
1 Overall quality at a glance

The following experimental techniques were used to determine the structure:

X-RAY DIFFRACTION

The reported resolution of this entry is 2.00 Å.

Percentile scores (ranging between 0-100) for global validation metrics of the entry are shown in the following graphic. The table shows the number of entries on which the scores are based.



Metric	Whole archive (#Entries)	Similar resolution (#Entries, resolution range(Å))
R_{free}	130704	8085 (2.00-2.00)
Clashscore	141614	9178 (2.00-2.00)
Ramachandran outliers	138981	9054 (2.00-2.00)
Sidechain outliers	138945	9053 (2.00-2.00)
RSRZ outliers	127900	7900 (2.00-2.00)

The table below summarises the geometric issues observed across the polymeric chains and their fit to the electron density. The red, orange, yellow and green segments on the lower bar indicate the fraction of residues that contain outliers for ≥ 3 , 2, 1 and 0 types of geometric quality criteria respectively. A grey segment represents the fraction of residues that are not modelled. The numeric value for each fraction is indicated below the corresponding segment, with a dot representing fractions $\leq 5\%$. The upper red bar (where present) indicates the fraction of residues that have poor fit to the electron density. The numeric value is given above the bar.

Mol	Chain	Length	Quality of chain
1	A	276	<div> <div>5%</div> <div>83%</div> <div>13%</div> <div>• •</div> </div>
1	B	276	<div> <div>13%</div> <div>79%</div> <div>13%</div> <div>• 6%</div> </div>

2 Entry composition

There are 4 unique types of molecules in this entry. The entry contains 4601 atoms, of which 0 are hydrogens and 0 are deuteriums.

In the tables below, the ZeroOcc column contains the number of atoms modelled with zero occupancy, the AltConf column contains the number of residues with at least one atom in alternate conformation and the Trace column contains the number of residues modelled with at most 2 atoms.

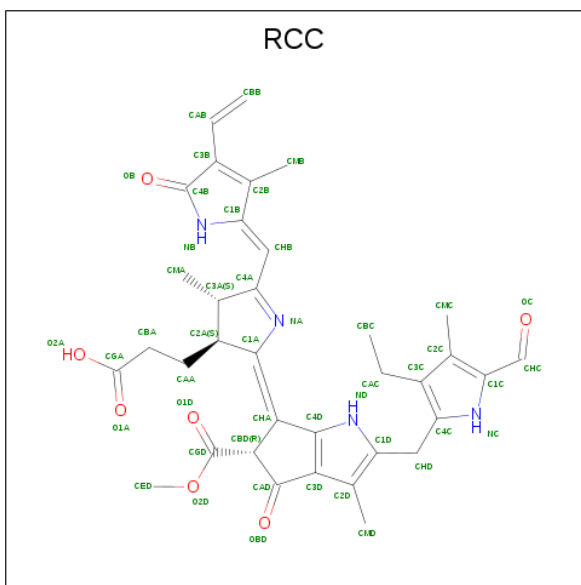
- Molecule 1 is a protein called Red chlorophyll catabolite reductase, chloroplastic.

Mol	Chain	Residues	Atoms					ZeroOcc	AltConf	Trace
1	A	271	Total	C	N	O	S	0	3	0
			2176	1373	374	420	9			
1	B	260	Total	C	N	O	S	0	2	0
			2062	1305	354	394	9			

There are 12 discrepancies between the modelled and reference sequences:

Chain	Residue	Modelled	Actual	Comment	Reference
A	44	GLY	-	EXPRESSION TAG	UNP Q8LDU4
A	45	PRO	-	EXPRESSION TAG	UNP Q8LDU4
A	46	LEU	-	EXPRESSION TAG	UNP Q8LDU4
A	47	GLY	-	EXPRESSION TAG	UNP Q8LDU4
A	48	SER	-	EXPRESSION TAG	UNP Q8LDU4
A	218	VAL	PHE	ENGINEERED MUTATION	UNP Q8LDU4
B	44	GLY	-	EXPRESSION TAG	UNP Q8LDU4
B	45	PRO	-	EXPRESSION TAG	UNP Q8LDU4
B	46	LEU	-	EXPRESSION TAG	UNP Q8LDU4
B	47	GLY	-	EXPRESSION TAG	UNP Q8LDU4
B	48	SER	-	EXPRESSION TAG	UNP Q8LDU4
B	218	VAL	PHE	ENGINEERED MUTATION	UNP Q8LDU4

- Molecule 2 is 3-{(2Z,3S,4S)-5-[(Z)-(4-ethenyl-3-methyl-5-oxo-1,5-dihydro-2H-pyrrol-2-ylidene)methyl]-2-[(5R)-2-[(3-ethyl-5-formyl-4-methyl-1H-pyrrol-2-yl)methyl]-5-(methoxycarbonyl)-3-methyl-4-oxo-4,5-dihydrocyclopenta[b]pyrrol-6(1H)-ylidene]-4-methyl-3,4-dihydro-2H-pyrrol-3-yl}propanoic acid (three-letter code: RCC) (formula: C₃₅H₃₈N₄O₇).



Mol	Chain	Residues	Atoms				ZeroOcc	AltConf
2	A	1	Total	C	N	O	0	0
			46	35	4	7		

- Molecule 3 is SODIUM ION (three-letter code: NA) (formula: Na).

Mol	Chain	Residues	Atoms	ZeroOcc	AltConf
3	B	1	Total Na 1 1	0	0
3	A	1	Total Na 1 1	0	0

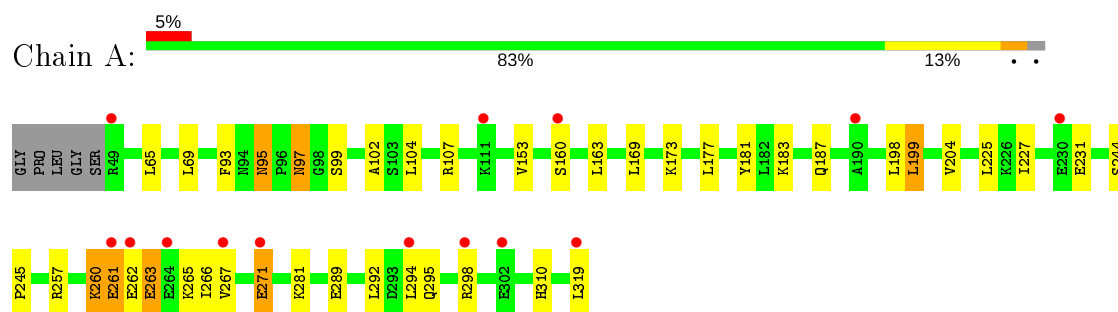
- Molecule 4 is water.

Mol	Chain	Residues	Atoms	ZeroOcc	AltConf
4	A	208	Total O 208 208	0	0
4	B	107	Total O 107 107	0	0

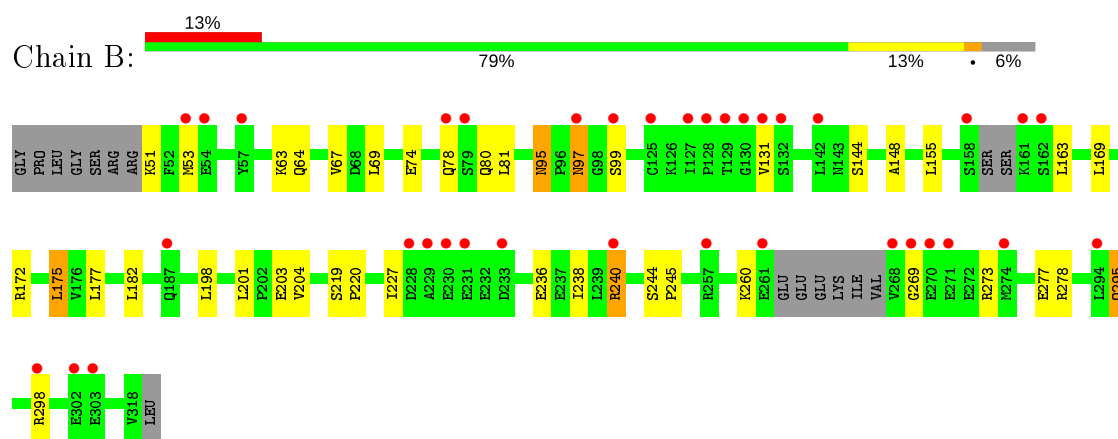
3 Residue-property plots [i](#)

These plots are drawn for all protein, RNA and DNA chains in the entry. The first graphic for a chain summarises the proportions of the various outlier classes displayed in the second graphic. The second graphic shows the sequence view annotated by issues in geometry and electron density. Residues are color-coded according to the number of geometric quality criteria for which they contain at least one outlier: green = 0, yellow = 1, orange = 2 and red = 3 or more. A red dot above a residue indicates a poor fit to the electron density ($RSRZ > 2$). Stretches of 2 or more consecutive residues without any outlier are shown as a green connector. Residues present in the sample, but not in the model, are shown in grey.

- Molecule 1: Red chlorophyll catabolite reductase, chloroplastic



- Molecule 1: Red chlorophyll catabolite reductase, chloroplastic



4 Data and refinement statistics

Property	Value	Source
Space group	P 21 21 21	Depositor
Cell constants a, b, c, α , β , γ	45.09 Å 84.32 Å 131.52 Å 90.00° 90.00° 90.00°	Depositor
Resolution (Å)	20.00 – 2.00 19.21 – 2.00	Depositor EDS
% Data completeness (in resolution range)	99.5 (20.00-2.00) 99.5 (19.21-2.00)	Depositor EDS
R_{merge}	(Not available)	Depositor
R_{sym}	0.06	Depositor
$\langle I/\sigma(I) \rangle$ ¹	4.51 (at 2.01 Å)	Xtriage
Refinement program	REFMAC 5.2.0019	Depositor
R, R_{free}	0.209 , 0.270 0.227 , 0.282	Depositor DCC
R_{free} test set	1735 reflections (5.04%)	wwPDB-VP
Wilson B-factor (Å ²)	27.9	Xtriage
Anisotropy	0.061	Xtriage
Bulk solvent k_{sol} (e/Å ³), B_{sol} (Å ²)	0.39 , 56.8	EDS
L-test for twinning ²	$\langle L \rangle = 0.50$, $\langle L^2 \rangle = 0.33$	Xtriage
Estimated twinning fraction	No twinning to report.	Xtriage
F_o, F_c correlation	0.93	EDS
Total number of atoms	4601	wwPDB-VP
Average B, all atoms (Å ²)	20.0	wwPDB-VP

Xtriage's analysis on translational NCS is as follows: *The largest off-origin peak in the Patterson function is 5.28% of the height of the origin peak. No significant pseudotranslation is detected.*

¹Intensities estimated from amplitudes.

²Theoretical values of $\langle |L| \rangle$, $\langle L^2 \rangle$ for acentric reflections are 0.5, 0.333 respectively for untwinned datasets, and 0.375, 0.2 for perfectly twinned datasets.

5 Model quality

5.1 Standard geometry

Bond lengths and bond angles in the following residue types are not validated in this section: NA, RCC

The Z score for a bond length (or angle) is the number of standard deviations the observed value is removed from the expected value. A bond length (or angle) with $|Z| > 5$ is considered an outlier worth inspection. RMSZ is the root-mean-square of all Z scores of the bond lengths (or angles).

Mol	Chain	Bond lengths		Bond angles	
		RMSZ	$\# Z > 5$	RMSZ	$\# Z > 5$
1	A	0.41	0/2230	0.57	0/3018
1	B	0.36	0/2110	0.52	0/2857
All	All	0.38	0/4340	0.55	0/5875

There are no bond length outliers.

There are no bond angle outliers.

There are no chirality outliers.

There are no planarity outliers.

5.2 Too-close contacts

In the following table, the Non-H and H(model) columns list the number of non-hydrogen atoms and hydrogen atoms in the chain respectively. The H(added) column lists the number of hydrogen atoms added and optimized by MolProbity. The Clashes column lists the number of clashes within the asymmetric unit, whereas Symm-Clashes lists symmetry related clashes.

Mol	Chain	Non-H	H(model)	H(added)	Clashes	Symm-Clashes
1	A	2176	0	2180	22	0
1	B	2062	0	2053	20	0
2	A	46	0	37	3	0
3	A	1	0	0	0	0
3	B	1	0	0	0	0
4	A	208	0	0	0	0
4	B	107	0	0	0	0
All	All	4601	0	4270	44	0

The all-atom clashscore is defined as the number of clashes found per 1000 atoms (including hydrogen atoms). The all-atom clashscore for this structure is 5.

All (44) close contacts within the same asymmetric unit are listed below, sorted by their clash magnitude.

Atom-1	Atom-2	Interatomic distance (Å)	Clash overlap (Å)
2:A:1000:RCC:HBB	2:A:1000:RCC:HMB	1.57	0.87
1:B:295:GLN:HE21	1:B:295:GLN:H	1.39	0.71
1:A:265:LYS:HG3	1:A:267:VAL:HG23	1.80	0.63
1:B:144:SER:HB3	1:B:277:GLU:HG3	1.88	0.56
1:A:263:GLU:O	1:A:265:LYS:O	2.24	0.56
1:B:74:GLU:O	1:B:78:GLN:HG2	2.06	0.56
1:A:292:LEU:HD11	2:A:1000:RCC:HMCA	1.88	0.55
1:A:265:LYS:HB3	1:A:266:ILE:HA	1.88	0.55
1:B:175:LEU:HG	1:B:182:LEU:HD13	1.88	0.54
1:B:295:GLN:HE21	1:B:295:GLN:N	2.04	0.54
1:B:97:ASN:HD22	1:B:99:SER:H	1.56	0.54
1:B:244:SER:HB2	1:B:245:PRO:HD3	1.90	0.54
1:A:97:ASN:HD22	1:A:97:ASN:C	2.12	0.53
1:B:95:ASN:HD22	1:B:97:ASN:H	1.57	0.52
1:B:204:VAL:HG22	1:B:227:ILE:HG12	1.93	0.51
1:A:93:PHE:CE1	1:A:102:ALA:HB3	2.46	0.50
1:A:95:ASN:HD22	1:A:97:ASN:H	1.60	0.48
1:B:64:GLN:HA	1:B:67:VAL:HG22	1.95	0.48
1:A:260:LYS:O	1:A:262:GLU:N	2.39	0.48
2:A:1000:RCC:CBC	2:A:1000:RCC:HMC	2.44	0.47
1:A:69:LEU:HD13	1:A:153:VAL:HG11	1.96	0.47
1:B:203:GLU:HG3	1:B:238:ILE:HD11	1.96	0.47
1:A:310:HIS:CD2	1:A:319:LEU:HD11	2.50	0.47
1:A:97:ASN:HD22	1:A:99:SER:H	1.64	0.46
1:A:244[B]:SER:HB3	1:A:245:PRO:HD3	1.98	0.46
1:A:183:LYS:HA	1:A:187[A]:GLN:HB2	1.97	0.45
1:B:97:ASN:ND2	1:B:99:SER:H	2.13	0.45
1:A:295:GLN:HG3	1:A:298:ARG:HH12	1.82	0.45
1:B:155:LEU:HD22	1:B:163:LEU:HD21	1.99	0.45
1:B:295:GLN:HG3	1:B:298:ARG:HH11	1.82	0.45
1:B:219:SER:HB2	1:B:220:PRO:HD2	1.99	0.44
1:A:97:ASN:ND2	1:A:99:SER:H	2.16	0.43
1:A:173:LYS:HD2	1:A:181:TYR:CD2	2.53	0.43
1:B:51:LYS:HE3	1:B:53:MET:H	1.83	0.43
1:A:271:GLU:H	1:A:271:GLU:CD	2.22	0.43
1:B:148:ALA:O	1:B:172:ARG:HD3	2.18	0.42
1:B:236:GLU:O	1:B:240:ARG:HG3	2.20	0.42
1:A:204:VAL:HG22	1:A:227:ILE:HG12	2.02	0.41
1:A:199:LEU:HD13	1:A:225:LEU:HD22	2.01	0.41
1:B:97:ASN:C	1:B:97:ASN:HD22	2.23	0.41

Continued on next page...

Continued from previous page...

Atom-1	Atom-2	Interatomic distance (Å)	Clash overlap (Å)
1:A:261:GLU:CD	1:A:261:GLU:H	2.25	0.41
1:A:289:GLU:O	1:A:294:LEU:HD13	2.21	0.40
1:B:203:GLU:HG3	1:B:238:ILE:CD1	2.51	0.40

There are no symmetry-related clashes.

5.3 Torsion angles [i](#)

5.3.1 Protein backbone [i](#)

In the following table, the Percentiles column shows the percent Ramachandran outliers of the chain as a percentile score with respect to all X-ray entries followed by that with respect to entries of similar resolution.

The Analysed column shows the number of residues for which the backbone conformation was analysed, and the total number of residues.

Mol	Chain	Analysed	Favoured	Allowed	Outliers	Percentiles	
1	A	272/276 (99%)	260 (96%)	10 (4%)	2 (1%)	22	16
1	B	256/276 (93%)	250 (98%)	5 (2%)	1 (0%)	34	30
All	All	528/552 (96%)	510 (97%)	15 (3%)	3 (1%)	25	19

All (3) Ramachandran outliers are listed below:

Mol	Chain	Res	Type
1	A	261	GLU
1	B	269	GLY
1	A	263	GLU

5.3.2 Protein sidechains [i](#)

In the following table, the Percentiles column shows the percent sidechain outliers of the chain as a percentile score with respect to all X-ray entries followed by that with respect to entries of similar resolution.

The Analysed column shows the number of residues for which the sidechain conformation was analysed, and the total number of residues.

Continued on next page...

Continued from previous page...

Mol	Chain	Analysed	Rotameric	Outliers	Percentiles	
1	A	254/255 (100%)	239 (94%)	15 (6%)	19	15
1	B	238/255 (93%)	221 (93%)	17 (7%)	14	10
All	All	492/510 (96%)	460 (94%)	32 (6%)	16	12

All (32) residues with a non-rotameric sidechain are listed below:

Mol	Chain	Res	Type
1	A	95	ASN
1	A	97	ASN
1	A	104	LEU
1	A	107	ARG
1	A	160	SER
1	A	163	LEU
1	A	169	LEU
1	A	177	LEU
1	A	198	LEU
1	A	199	LEU
1	A	231	GLU
1	A	257	ARG
1	A	260	LYS
1	A	271	GLU
1	A	281	LYS
1	B	63	LYS
1	B	69	LEU
1	B	80	GLN
1	B	81	LEU
1	B	95	ASN
1	B	97	ASN
1	B	131	VAL
1	B	169	LEU
1	B	175	LEU
1	B	177	LEU
1	B	198	LEU
1	B	201	LEU
1	B	240	ARG
1	B	260	LYS
1	B	273	ARG
1	B	278	ARG
1	B	295	GLN

Some sidechains can be flipped to improve hydrogen bonding and reduce clashes. All (10) such sidechains are listed below:

Mol	Chain	Res	Type
1	A	75	ASN
1	A	80	GLN
1	A	92	ASN
1	A	95	ASN
1	A	97	ASN
1	B	95	ASN
1	B	97	ASN
1	B	134	ASN
1	B	205	ASN
1	B	295	GLN

5.3.3 RNA ⓘ

There are no RNA molecules in this entry.

5.4 Non-standard residues in protein, DNA, RNA chains ⓘ

There are no non-standard protein/DNA/RNA residues in this entry.

5.5 Carbohydrates ⓘ

There are no carbohydrates in this entry.

5.6 Ligand geometry ⓘ

Of 3 ligands modelled in this entry, 2 are monoatomic - leaving 1 for Mogul analysis.

In the following table, the Counts columns list the number of bonds (or angles) for which Mogul statistics could be retrieved, the number of bonds (or angles) that are observed in the model and the number of bonds (or angles) that are defined in the Chemical Component Dictionary. The Link column lists molecule types, if any, to which the group is linked. The Z score for a bond length (or angle) is the number of standard deviations the observed value is removed from the expected value. A bond length (or angle) with $|Z| > 2$ is considered an outlier worth inspection. RMSZ is the root-mean-square of all Z scores of the bond lengths (or angles).

Mol	Type	Chain	Res	Link	Bond lengths			Bond angles		
					Counts	RMSZ	# $ Z > 2$	Counts	RMSZ	# $ Z > 2$
2	RCC	A	1000	-	39,50,50	2.18	9 (23%)	45,75,75	2.43	16 (35%)

In the following table, the Chirals column lists the number of chiral outliers, the number of chiral centers analysed, the number of these observed in the model and the number defined in the Chemical Component Dictionary. Similar counts are reported in the Torsion and Rings columns. '-' means no outliers of that kind were identified.

Mol	Type	Chain	Res	Link	Chirals	Torsions	Rings
2	RCC	A	1000	-	-	6/21/77/77	0/5/5/5

All (9) bond length outliers are listed below:

Mol	Chain	Res	Type	Atoms	Z	Observed(Å)	Ideal(Å)
2	A	1000	RCC	CHA-C1A	5.73	1.50	1.38
2	A	1000	RCC	O2D-CGD	5.41	1.46	1.33
2	A	1000	RCC	CHB-C1B	4.84	1.49	1.38
2	A	1000	RCC	OBD-CAD	4.81	1.29	1.22
2	A	1000	RCC	C3D-CAD	-4.14	1.38	1.47
2	A	1000	RCC	C3C-C2C	3.60	1.48	1.37
2	A	1000	RCC	OB-C4B	2.96	1.29	1.23
2	A	1000	RCC	C1B-C2B	-2.83	1.40	1.45
2	A	1000	RCC	C3B-C4B	-2.83	1.39	1.47

All (16) bond angle outliers are listed below:

Mol	Chain	Res	Type	Atoms	Z	Observed(°)	Ideal(°)
2	A	1000	RCC	C3B-C4B-NB	6.89	113.97	106.19
2	A	1000	RCC	C4D-C3D-CAD	5.89	111.60	107.87
2	A	1000	RCC	C1B-NB-C4B	-5.82	103.26	110.67
2	A	1000	RCC	O2D-CGD-CBD	4.78	119.76	111.27
2	A	1000	RCC	OC-CHC-C1C	-4.57	119.90	124.22
2	A	1000	RCC	CBC-CAC-C3C	4.28	123.17	112.27
2	A	1000	RCC	C2B-C1B-NB	3.53	112.15	106.99
2	A	1000	RCC	C4B-C3B-C2B	-2.85	104.26	107.92
2	A	1000	RCC	C4D-CHA-C1A	-2.75	123.72	130.51
2	A	1000	RCC	OB-C4B-C3B	-2.74	123.25	129.46
2	A	1000	RCC	O2D-CGD-O1D	-2.61	118.74	123.84
2	A	1000	RCC	CED-O2D-CGD	2.43	121.43	115.94
2	A	1000	RCC	CHB-C1B-NB	-2.41	120.89	126.06
2	A	1000	RCC	CAC-C3C-C4C	-2.30	124.42	127.19
2	A	1000	RCC	C4A-NA-C1A	2.30	109.99	108.14
2	A	1000	RCC	CMC-C2C-C3C	2.11	128.93	124.94

There are no chirality outliers.

All (6) torsion outliers are listed below:

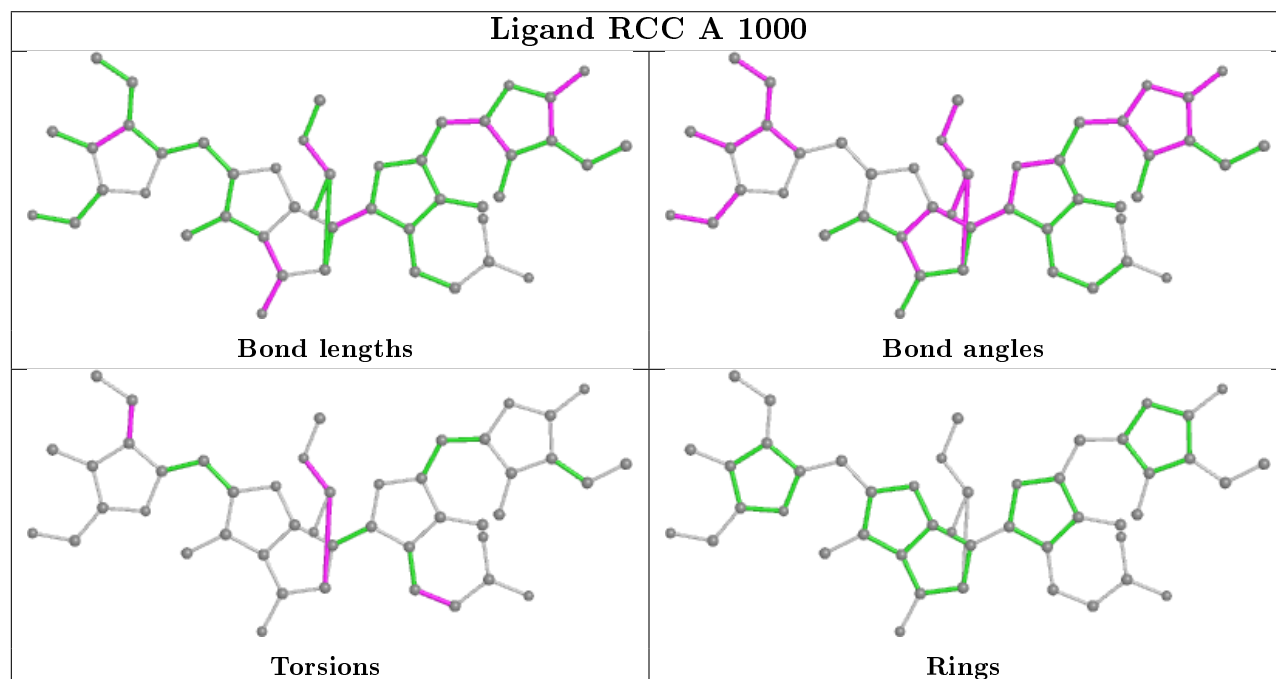
Mol	Chain	Res	Type	Atoms
2	A	1000	RCC	C2C-C3C-CAC-CBC
2	A	1000	RCC	C4C-C3C-CAC-CBC
2	A	1000	RCC	CBD-CGD-O2D-CED
2	A	1000	RCC	O1D-CGD-O2D-CED
2	A	1000	RCC	C2A-CAA-CBA-CGA
2	A	1000	RCC	CAD-CBD-CGD-O2D

There are no ring outliers.

1 monomer is involved in 3 short contacts:

Mol	Chain	Res	Type	Clashes	Symm-Clashes
2	A	1000	RCC	3	0

The following is a two-dimensional graphical depiction of Mogul quality analysis of bond lengths, bond angles, torsion angles, and ring geometry for all instances of the Ligand of Interest. In addition, ligands with molecular weight > 250 and outliers as shown on the validation Tables will also be included. For torsion angles, if less than 5% of the Mogul distribution of torsion angles is within 10 degrees of the torsion angle in question, then that torsion angle is considered an outlier. Any bond that is central to one or more torsion angles identified as an outlier by Mogul will be highlighted in the graph. For rings, the root-mean-square deviation (RMSD) between the ring in question and similar rings identified by Mogul is calculated over all ring torsion angles. If the average RMSD is greater than 60 degrees and the minimal RMSD between the ring in question and any Mogul-identified rings is also greater than 60 degrees, then that ring is considered an outlier. The outliers are highlighted in purple. The color gray indicates Mogul did not find sufficient equivalents in the CSD to analyse the geometry.



5.7 Other polymers [i](#)

There are no such residues in this entry.

5.8 Polymer linkage issues [i](#)

There are no chain breaks in this entry.

6 Fit of model and data

6.1 Protein, DNA and RNA chains

In the following table, the column labelled ‘#RSRZ> 2’ contains the number (and percentage) of RSRZ outliers, followed by percent RSRZ outliers for the chain as percentile scores relative to all X-ray entries and entries of similar resolution. The OWAB column contains the minimum, median, 95th percentile and maximum values of the occupancy-weighted average B-factor per residue. The column labelled ‘Q< 0.9’ lists the number of (and percentage) of residues with an average occupancy less than 0.9.

Mol	Chain	Analysed	<RSRZ>	#RSRZ>2	OWAB(Å ²)	Q<0.9
1	A	271/276 (98%)	0.30	14 (5%) 27 26	9, 15, 26, 32	0
1	B	260/276 (94%)	0.80	36 (13%) 2 2	12, 22, 33, 40	0
All	All	531/552 (96%)	0.55	50 (9%) 8 8	9, 18, 31, 40	0

All (50) RSRZ outliers are listed below:

Mol	Chain	Res	Type	RSRZ
1	A	294	LEU	7.5
1	B	294	LEU	7.4
1	B	230	GLU	7.2
1	A	319	LEU	7.1
1	A	264	GLU	5.5
1	B	268	VAL	5.5
1	B	127	ILE	5.2
1	B	261	GLU	4.8
1	B	269	GLY	4.7
1	B	128	PRO	4.7
1	A	261	GLU	4.6
1	B	270	GLU	4.6
1	B	229	ALA	4.3
1	A	262	GLU	4.2
1	B	231	GLU	4.2
1	B	298	ARG	4.1
1	B	57	TYR	3.7
1	B	132	SER	3.5
1	B	162	SER	3.4
1	B	130	GLY	3.3
1	B	158	SER	3.2
1	B	233	ASP	3.1
1	A	267	VAL	3.1
1	B	125	CYS	2.9

Continued on next page...

Continued from previous page...

Mol	Chain	Res	Type	RSRZ
1	B	274	MET	2.9
1	B	79	SER	2.8
1	B	129	THR	2.8
1	B	131	VAL	2.7
1	A	190	ALA	2.6
1	B	257	ARG	2.6
1	B	302	GLU	2.6
1	B	54	GLU	2.6
1	B	161	LYS	2.5
1	B	271	GLU	2.5
1	A	302	GLU	2.5
1	A	271	GLU	2.5
1	A	49	ARG	2.4
1	B	97	ASN	2.3
1	B	142	LEU	2.3
1	B	78	GLN	2.2
1	B	53	MET	2.2
1	A	298	ARG	2.2
1	A	230	GLU	2.2
1	A	160	SER	2.2
1	B	240	ARG	2.1
1	B	187	GLN	2.1
1	B	228	ASP	2.0
1	B	303	GLU	2.0
1	A	111	LYS	2.0
1	B	99	SER	2.0

6.2 Non-standard residues in protein, DNA, RNA chains [i](#)

There are no non-standard protein/DNA/RNA residues in this entry.

6.3 Carbohydrates [i](#)

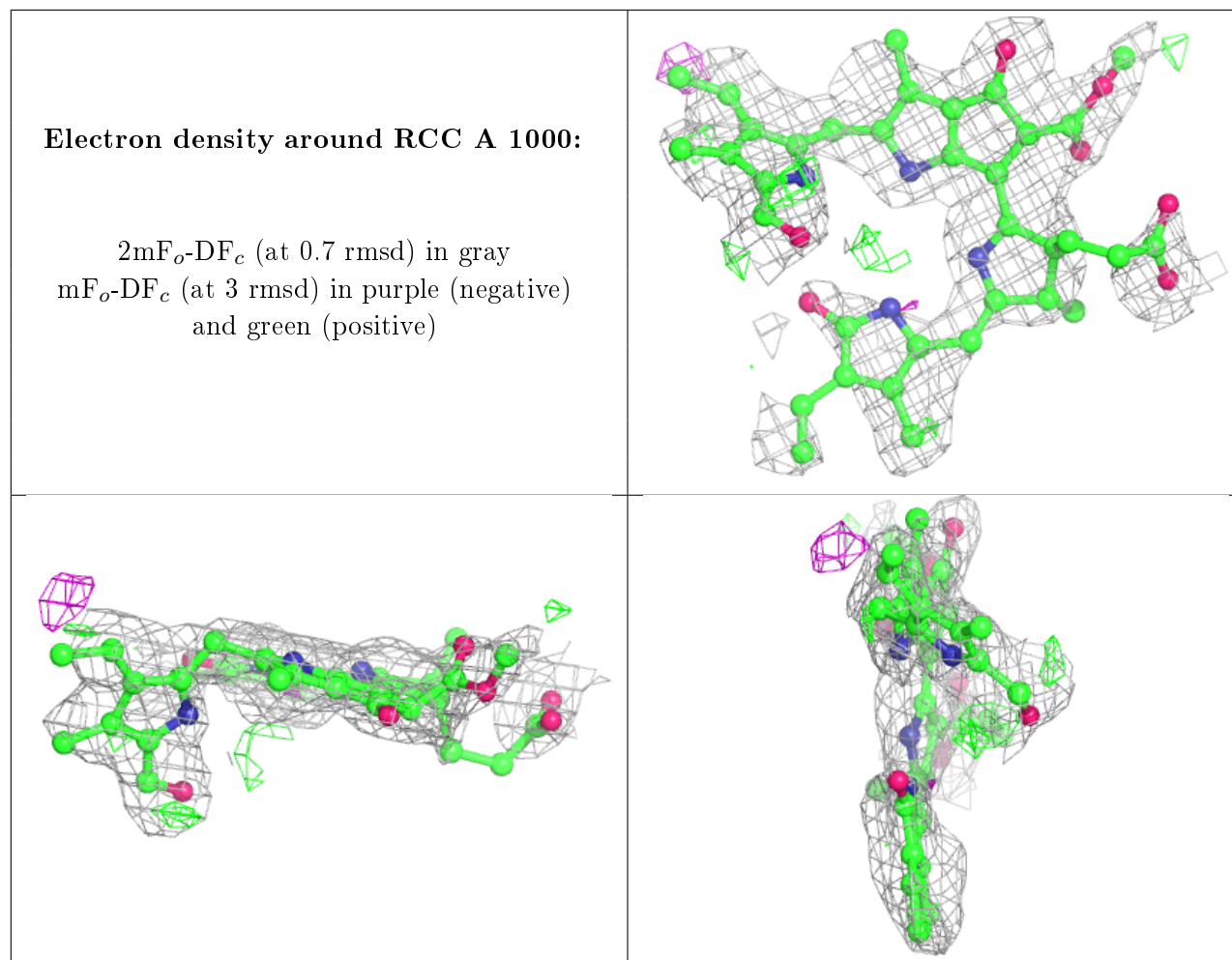
There are no carbohydrates in this entry.

6.4 Ligands [i](#)

In the following table, the Atoms column lists the number of modelled atoms in the group and the number defined in the chemical component dictionary. The B-factors column lists the minimum, median, 95th percentile and maximum values of B factors of atoms in the group. The column labelled 'Q< 0.9' lists the number of atoms with occupancy less than 0.9.

Mol	Type	Chain	Res	Atoms	RSCC	RSR	B-factors(\AA^2)	Q<0.9
2	RCC	A	1000	46/46	0.58	0.30	60,61,62,62	0
3	NA	B	2	1/1	0.72	0.13	35,35,35,35	0
3	NA	A	1	1/1	0.91	0.15	28,28,28,28	0

The following is a graphical depiction of the model fit to experimental electron density of all instances of the Ligand of Interest. In addition, ligands with molecular weight > 250 and outliers as shown on the geometry validation Tables will also be included. Each fit is shown from different orientation to approximate a three-dimensional view.



6.5 Other polymers ⓘ

There are no such residues in this entry.