



# wwPDB X-ray Structure Validation Summary Report ⓘ

Aug 21, 2020 – 08:43 AM BST

PDB ID : 4AIN  
Title : Crystal structure of BetP with asymmetric protomers.  
Authors : Koshy, C.; Ziegler, C.; Yildiz, O.  
Deposited on : 2012-02-10  
Resolution : 3.10 Å(reported)

This is a wwPDB X-ray Structure Validation Summary Report for a publicly released PDB entry.

We welcome your comments at [validation@mail.wwpdb.org](mailto:validation@mail.wwpdb.org)

A user guide is available at

<https://www.wwpdb.org/validation/2017/XrayValidationReportHelp>

with specific help available everywhere you see the ⓘ symbol.

---

The following versions of software and data (see [references ⓘ](#)) were used in the production of this report:

MolProbity : 4.02b-467  
Mogul : 1.8.5 (274361), CSD as541be (2020)  
Xtriage (Phenix) : 1.13  
EDS : 2.13.1  
buster-report : 1.1.7 (2018)  
Percentile statistics : 20191225.v01 (using entries in the PDB archive December 25th 2019)  
Refmac : 5.8.0158  
CCP4 : 7.0.044 (Gargrove)  
Ideal geometry (proteins) : Engh & Huber (2001)  
Ideal geometry (DNA, RNA) : Parkinson et al. (1996)  
Validation Pipeline (wwPDB-VP) : 2.13.1

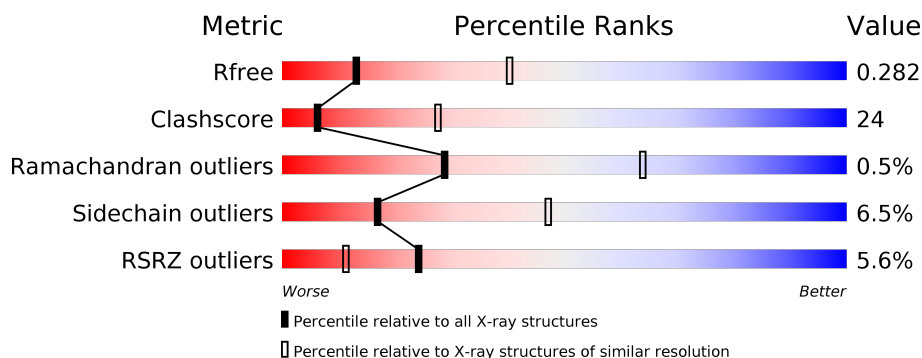
# 1 Overall quality at a glance ⓘ

The following experimental techniques were used to determine the structure:

## *X-RAY DIFFRACTION*

The reported resolution of this entry is 3.10 Å.

Percentile scores (ranging between 0-100) for global validation metrics of the entry are shown in the following graphic. The table shows the number of entries on which the scores are based.



Metric	Whole archive (#Entries)	Similar resolution (#Entries, resolution range(Å))
$R_{free}$	130704	1094 (3.10-3.10)
Clashscore	141614	1184 (3.10-3.10)
Ramachandran outliers	138981	1141 (3.10-3.10)
Sidechain outliers	138945	1141 (3.10-3.10)
RSRZ outliers	127900	1067 (3.10-3.10)

The table below summarises the geometric issues observed across the polymeric chains and their fit to the electron density. The red, orange, yellow and green segments on the lower bar indicate the fraction of residues that contain outliers for  $\geq 3$ , 2, 1 and 0 types of geometric quality criteria respectively. A grey segment represents the fraction of residues that are not modelled. The numeric value for each fraction is indicated below the corresponding segment, with a dot representing fractions  $\leq 5\%$ . The upper red bar (where present) indicates the fraction of residues that have poor fit to the electron density. The numeric value is given above the bar.

Mol	Chain	Length	Quality of chain
1	A	539	<div> <div>6%</div> <div>54%</div> <div>40%</div> <div>• •</div> </div>
1	B	539	<div> <div>5%</div> <div>52%</div> <div>38%</div> <div>• 8%</div> </div>
1	C	539	<div> <div>5%</div> <div>48%</div> <div>42%</div> <div>• 7%</div> </div>

The following table lists non-polymeric compounds, carbohydrate monomers and non-standard residues in protein, DNA, RNA chains that are outliers for geometric or electron-density-fit criteria:

Mol	Type	Chain	Res	Chirality	Geometry	Clashes	Electron density
2	NA	B	1558	-	-	-	X
3	BET	B	1559	-	-	X	-

## 2 Entry composition [i](#)

There are 8 unique types of molecules in this entry. The entry contains 11639 atoms, of which 0 are hydrogens and 0 are deuteriums.

In the tables below, the ZeroOcc column contains the number of atoms modelled with zero occupancy, the AltConf column contains the number of residues with at least one atom in alternate conformation and the Trace column contains the number of residues modelled with at most 2 atoms.

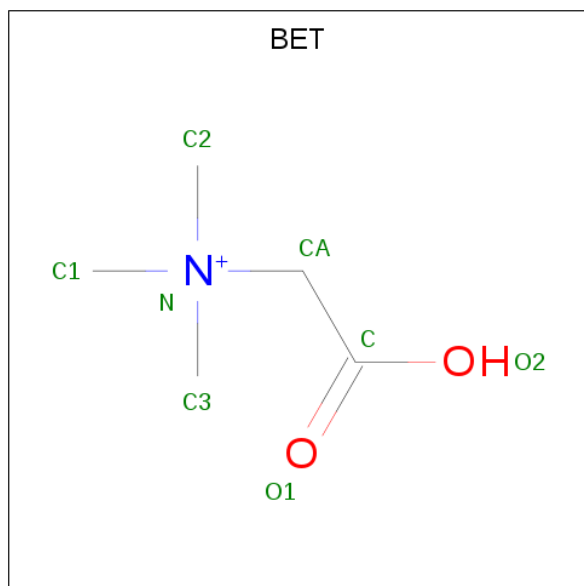
- Molecule 1 is a protein called GLYCINE BETAINES TRANSPORTER BETP.

Mol	Chain	Residues	Atoms					ZeroOcc	AltConf	Trace
1	A	529	Total	C	N	O	S	0	0	0
			4033	2647	660	710	16			
1	B	497	Total	C	N	O	S	0	0	0
			3755	2480	600	659	16			
1	C	499	Total	C	N	O	S	0	0	0
			3763	2487	598	662	16			

- Molecule 2 is SODIUM ION (three-letter code: NA) (formula: Na).

Mol	Chain	Residues	Atoms		ZeroOcc	AltConf
2	B	1	Total	Na	0	0
			1	1		

- Molecule 3 is TRIMETHYL GLYCINE (three-letter code: BET) (formula: C<sub>5</sub>H<sub>12</sub>NO<sub>2</sub>).



Mol	Chain	Residues	Atoms				ZeroOcc	AltConf
3	B	1	Total	C	N	O	0	0
			8	5	1	2		
3	C	1	Total	C	N	O	0	0
			8	5	1	2		

- Molecule 4 is DI(HYDROXYETHYL)ETHER (three-letter code: PEG) (formula:  $C_4H_{10}O_3$ ).

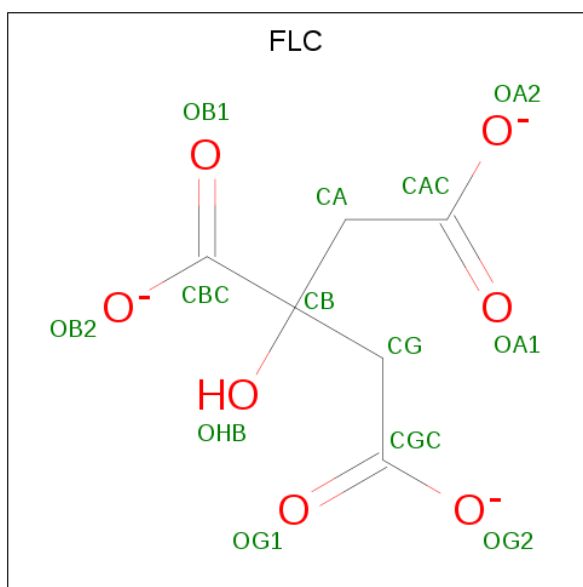


Mol	Chain	Residues	Atoms			ZeroOcc	AltConf
4	B	1	Total	C	O	0	0
			7	4	3		

- Molecule 5 is CHLORIDE ION (three-letter code: CL) (formula: Cl).

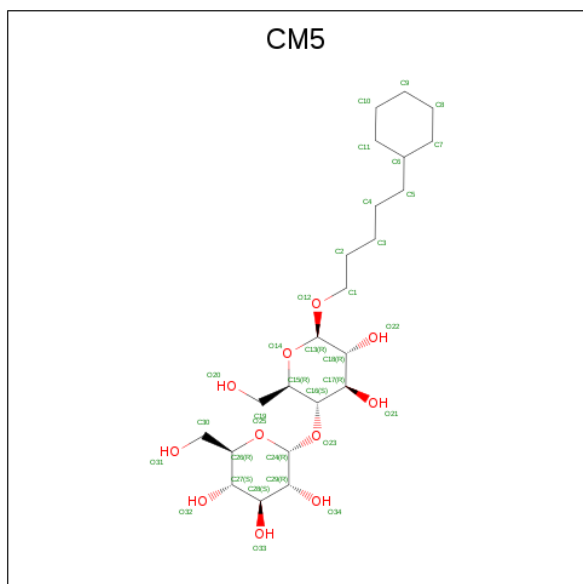
Mol	Chain	Residues	Atoms		ZeroOcc	AltConf
5	B	1	Total	Cl	0	0
			1	1		
5	C	3	Total	Cl	0	0
			3	3		

- Molecule 6 is CITRATE ANION (three-letter code: FLC) (formula:  $C_6H_5O_7$ ).



Mol	Chain	Residues	Atoms			ZeroOcc	AltConf
6	C	1	Total	C	O	0	0
			13	6	7		

- Molecule 7 is 5-CYCLOHEXYL-1-PENTYL-BETA-D-MALTOSE (three-letter code: CM5) (formula:  $C_{23}H_{42}O_{11}$ ).



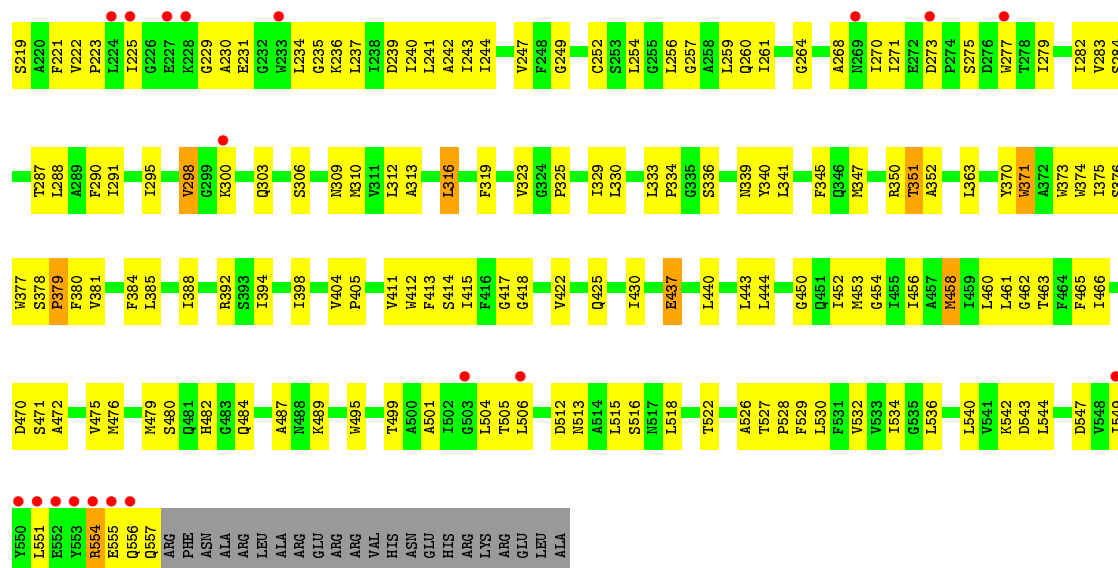
Mol	Chain	Residues	Atoms			ZeroOcc	AltConf
7	C	1	Total	C	O	0	0
			34	23	11		

- Molecule 8 is water.

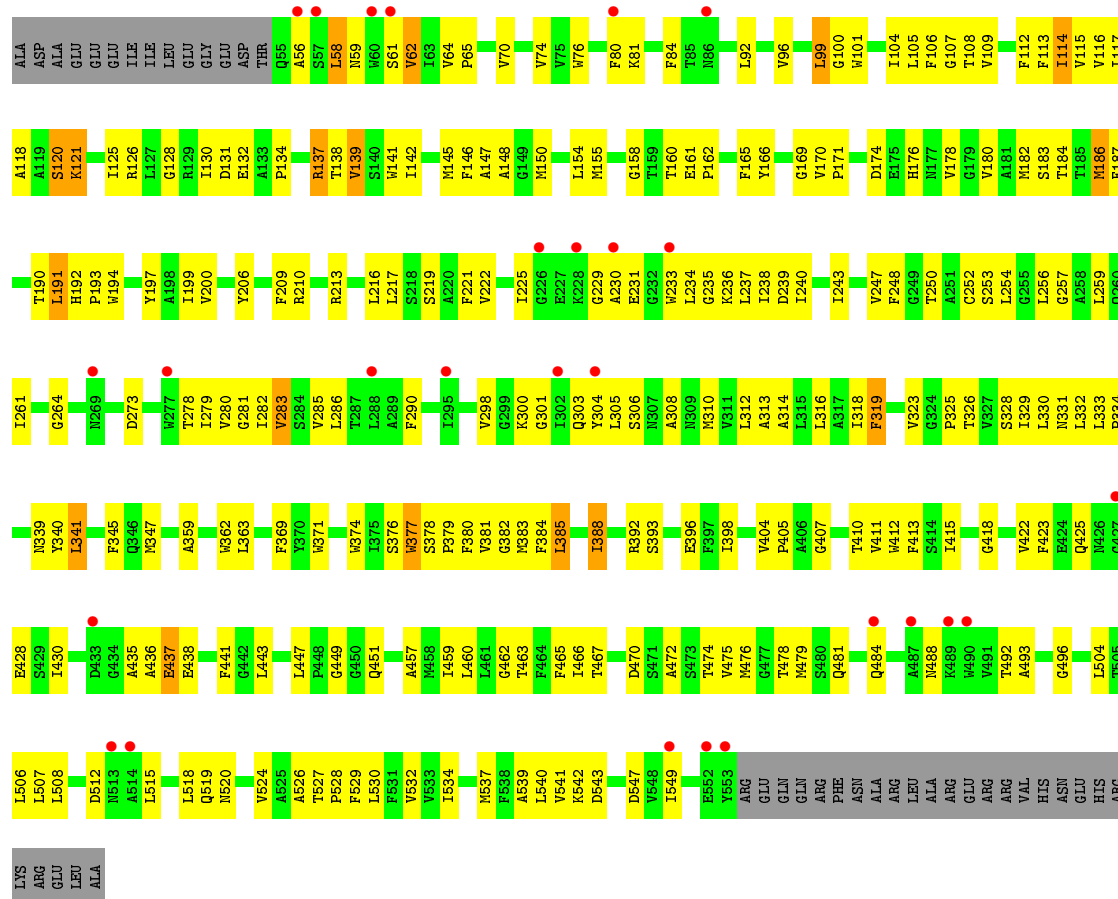
Mol	Chain	Residues	Atoms		ZeroOcc	AltConf
8	A	1	Total 1	O 1	0	0
8	B	5	Total 5	O 5	0	0
8	C	7	Total 7	O 7	0	0







• Molecule 1: GLYCINE BETAINÉ TRANSPORTER BETP



## 4 Data and refinement statistics

Property	Value	Source
Space group	P 21 21 21	Depositor
Cell constants a, b, c, $\alpha$ , $\beta$ , $\gamma$	112.81Å 128.15Å 159.69Å 90.00° 90.00° 90.00°	Depositor
Resolution (Å)	48.14 – 3.10 48.14 – 3.00	Depositor EDS
% Data completeness (in resolution range)	84.6 (48.14-3.10) 77.6 (48.14-3.00)	Depositor EDS
$R_{merge}$	0.26	Depositor
$R_{sym}$	(Not available)	Depositor
$\langle I/\sigma(I) \rangle$ <sup>1</sup>	5.67 (at 3.01Å)	Xtriage
Refinement program	PHENIX (PHENIX.REFINE: 1.6_289)	Depositor
R, $R_{free}$	0.225 , 0.285 0.222 , 0.282	Depositor DCC
$R_{free}$ test set	1826 reflections (5.00%)	wwPDB-VP
Wilson B-factor (Å <sup>2</sup> )	58.0	Xtriage
Anisotropy	0.070	Xtriage
Bulk solvent $k_{sol}$ (e/Å <sup>3</sup> ), $B_{sol}$ (Å <sup>2</sup> )	0.28 , 99.1	EDS
L-test for twinning <sup>2</sup>	$\langle  L  \rangle = 0.45$ , $\langle L^2 \rangle = 0.27$	Xtriage
Estimated twinning fraction	No twinning to report.	Xtriage
$F_o, F_c$ correlation	0.88	EDS
Total number of atoms	11639	wwPDB-VP
Average B, all atoms (Å <sup>2</sup> )	119.0	wwPDB-VP

Xtriage's analysis on translational NCS is as follows: *The largest off-origin peak in the Patterson function is 3.32% of the height of the origin peak. No significant pseudotranslation is detected.*

<sup>1</sup>Intensities estimated from amplitudes.

<sup>2</sup>Theoretical values of  $\langle |L| \rangle$ ,  $\langle L^2 \rangle$  for acentric reflections are 0.5, 0.333 respectively for untwinned datasets, and 0.375, 0.2 for perfectly twinned datasets.

## 5 Model quality [i](#)

### 5.1 Standard geometry [i](#)

Bond lengths and bond angles in the following residue types are not validated in this section: CL, NA, FLC, PEG, CM5, BET

The Z score for a bond length (or angle) is the number of standard deviations the observed value is removed from the expected value. A bond length (or angle) with  $|Z| > 5$  is considered an outlier worth inspection. RMSZ is the root-mean-square of all Z scores of the bond lengths (or angles).

Mol	Chain	Bond lengths		Bond angles	
		RMSZ	# $ Z  > 5$	RMSZ	# $ Z  > 5$
1	A	0.22	0/4132	0.38	0/5626
1	B	0.23	0/3852	0.40	0/5253
1	C	0.24	0/3862	0.40	0/5271
All	All	0.23	0/11846	0.40	0/16150

There are no bond length outliers.

There are no bond angle outliers.

There are no chirality outliers.

There are no planarity outliers.

### 5.2 Too-close contacts [i](#)

In the following table, the Non-H and H(model) columns list the number of non-hydrogen atoms and hydrogen atoms in the chain respectively. The H(added) column lists the number of hydrogen atoms added and optimized by MolProbity. The Clashes column lists the number of clashes within the asymmetric unit, whereas Symm-Clashes lists symmetry related clashes.

Mol	Chain	Non-H	H(model)	H(added)	Clashes	Symm-Clashes
1	A	4033	0	4048	187	0
1	B	3755	0	3783	191	0
1	C	3763	0	3792	197	0
2	B	1	0	0	0	0
3	B	8	0	11	7	0
3	C	8	0	11	3	0
4	B	7	0	10	0	0
5	B	1	0	0	0	0
5	C	3	0	0	1	0
6	C	13	0	5	2	0

*Continued on next page...*

*Continued from previous page...*

Mol	Chain	Non-H	H(model)	H(added)	Clashes	Symm-Clashes
7	C	34	0	42	3	0
8	A	1	0	0	0	0
8	B	5	0	0	2	0
8	C	7	0	0	0	0
All	All	11639	0	11702	567	0

The all-atom clashscore is defined as the number of clashes found per 1000 atoms (including hydrogen atoms). The all-atom clashscore for this structure is 24.

The worst 5 of 567 close contacts within the same asymmetric unit are listed below, sorted by their clash magnitude.

Atom-1	Atom-2	Interatomic distance (Å)	Clash overlap (Å)
1:B:58:LEU:H	1:B:58:LEU:HD13	1.41	0.86
1:B:334:PRO:HG3	1:C:105:LEU:HB2	1.56	0.86
1:B:513:ASN:HA	1:B:516:SER:HB3	1.63	0.81
1:A:334:PRO:HG3	1:B:105:LEU:HB2	1.61	0.81
1:A:295:ILE:HG23	1:A:489:LYS:HG2	1.63	0.81

There are no symmetry-related clashes.

## 5.3 Torsion angles [i](#)

### 5.3.1 Protein backbone [i](#)

In the following table, the Percentiles column shows the percent Ramachandran outliers of the chain as a percentile score with respect to all X-ray entries followed by that with respect to entries of similar resolution.

The Analysed column shows the number of residues for which the backbone conformation was analysed, and the total number of residues.

Mol	Chain	Analysed	Favoured	Allowed	Outliers	Percentiles	
1	A	521/539 (97%)	462 (89%)	57 (11%)	2 (0%)	34	69
1	B	493/539 (92%)	422 (86%)	67 (14%)	4 (1%)	19	54
1	C	497/539 (92%)	434 (87%)	61 (12%)	2 (0%)	34	69
All	All	1511/1617 (93%)	1318 (87%)	185 (12%)	8 (0%)	29	64

5 of 8 Ramachandran outliers are listed below:

Mol	Chain	Res	Type
1	A	174	ASP
1	B	153	GLY
1	B	298	VAL
1	A	448	PRO
1	B	379	PRO

### 5.3.2 Protein sidechains ⓘ

In the following table, the Percentiles column shows the percent sidechain outliers of the chain as a percentile score with respect to all X-ray entries followed by that with respect to entries of similar resolution.

The Analysed column shows the number of residues for which the sidechain conformation was analysed, and the total number of residues.

Mol	Chain	Analysed	Rotameric	Outliers	Percentiles	
1	A	413/421 (98%)	383 (93%)	30 (7%)	14	43
1	B	386/421 (92%)	363 (94%)	23 (6%)	19	49
1	C	387/421 (92%)	363 (94%)	24 (6%)	18	49
All	All	1186/1263 (94%)	1109 (94%)	77 (6%)	17	47

5 of 77 residues with a non-rotameric sidechain are listed below:

Mol	Chain	Res	Type
1	B	121	LYS
1	B	316	LEU
1	C	371	TRP
1	B	137	ARG
1	B	202	LEU

Some sidechains can be flipped to improve hydrogen bonding and reduce clashes. All (4) such sidechains are listed below:

Mol	Chain	Res	Type
1	B	445	HIS
1	B	451	GLN
1	B	557	GLN
1	C	481	GLN

### 5.3.3 RNA ⓘ

There are no RNA molecules in this entry.

## 5.4 Non-standard residues in protein, DNA, RNA chains [i](#)

There are no non-standard protein/DNA/RNA residues in this entry.

## 5.5 Carbohydrates [i](#)

There are no monosaccharides in this entry.

## 5.6 Ligand geometry [i](#)

Of 10 ligands modelled in this entry, 5 are monoatomic - leaving 5 for Mogul analysis.

In the following table, the Counts columns list the number of bonds (or angles) for which Mogul statistics could be retrieved, the number of bonds (or angles) that are observed in the model and the number of bonds (or angles) that are defined in the Chemical Component Dictionary. The Link column lists molecule types, if any, to which the group is linked. The Z score for a bond length (or angle) is the number of standard deviations the observed value is removed from the expected value. A bond length (or angle) with  $|Z| > 2$  is considered an outlier worth inspection. RMSZ is the root-mean-square of all Z scores of the bond lengths (or angles).

Mol	Type	Chain	Res	Link	Bond lengths			Bond angles		
					Counts	RMSZ	$\# Z  > 2$	Counts	RMSZ	$\# Z  > 2$
3	BET	C	1556	-	4,7,7	1.12	0	7,10,10	0.98	1 (14%)
3	BET	B	1559	-	4,7,7	1.11	0	7,10,10	0.75	0
7	CM5	C	1559	-	36,36,36	0.43	0	49,49,49	0.89	1 (2%)
4	PEG	B	1560	-	6,6,6	0.46	0	5,5,5	0.24	0
6	FLC	C	1558	-	3,12,12	1.20	0	3,17,17	1.72	1 (33%)

In the following table, the Chirals column lists the number of chiral outliers, the number of chiral centers analysed, the number of these observed in the model and the number defined in the Chemical Component Dictionary. Similar counts are reported in the Torsion and Rings columns. '-' means no outliers of that kind were identified.

Mol	Type	Chain	Res	Link	Chirals	Torsions	Rings
3	BET	C	1556	-	-	0/3/5/5	-
3	BET	B	1559	-	-	0/3/5/5	-
7	CM5	C	1559	-	-	13/17/65/65	0/3/3/3
4	PEG	B	1560	-	-	0/4/4/4	-
6	FLC	C	1558	-	-	6/6/16/16	-

There are no bond length outliers.

All (3) bond angle outliers are listed below:

Mol	Chain	Res	Type	Atoms	Z	Observed(°)	Ideal(°)
7	C	1559	CM5	C24-O23-C16	-2.79	111.06	117.96
6	C	1558	FLC	CB-CG-CGC	-2.73	110.62	114.98
3	C	1556	BET	C-CA-N	-2.33	112.52	115.15

There are no chirality outliers.

5 of 19 torsion outliers are listed below:

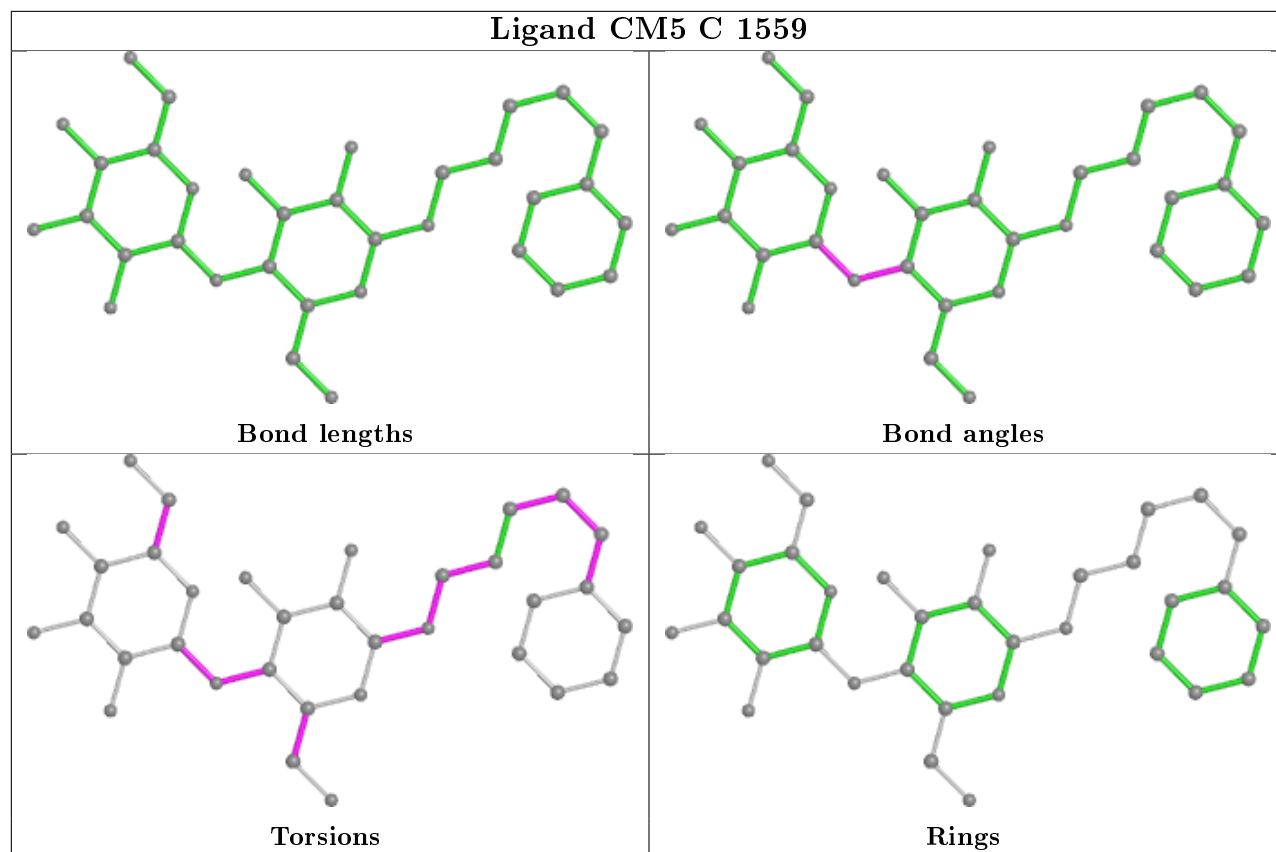
Mol	Chain	Res	Type	Atoms
7	C	1559	CM5	C18-C13-O12-C1
7	C	1559	CM5	O14-C13-O12-C1
6	C	1558	FLC	CAC-CA-CB-CBC
6	C	1558	FLC	CAC-CA-CB-CG
6	C	1558	FLC	CAC-CA-CB-OHB

There are no ring outliers.

4 monomers are involved in 15 short contacts:

Mol	Chain	Res	Type	Clashes	Symm-Clashes
3	C	1556	BET	3	0
3	B	1559	BET	7	0
7	C	1559	CM5	3	0
6	C	1558	FLC	2	0

The following is a two-dimensional graphical depiction of Mogul quality analysis of bond lengths, bond angles, torsion angles, and ring geometry for all instances of the Ligand of Interest. In addition, ligands with molecular weight > 250 and outliers as shown on the validation Tables will also be included. For torsion angles, if less than 5% of the Mogul distribution of torsion angles is within 10 degrees of the torsion angle in question, then that torsion angle is considered an outlier. Any bond that is central to one or more torsion angles identified as an outlier by Mogul will be highlighted in the graph. For rings, the root-mean-square deviation (RMSD) between the ring in question and similar rings identified by Mogul is calculated over all ring torsion angles. If the average RMSD is greater than 60 degrees and the minimal RMSD between the ring in question and any Mogul-identified rings is also greater than 60 degrees, then that ring is considered an outlier. The outliers are highlighted in purple. The color gray indicates Mogul did not find sufficient equivalents in the CSD to analyse the geometry.



## 5.7 Other polymers [i](#)

There are no such residues in this entry.

## 5.8 Polymer linkage issues [i](#)

There are no chain breaks in this entry.



## 6 Fit of model and data [i](#)

### 6.1 Protein, DNA and RNA chains [i](#)

In the following table, the column labelled ‘#RSRZ> 2’ contains the number (and percentage) of RSRZ outliers, followed by percent RSRZ outliers for the chain as percentile scores relative to all X-ray entries and entries of similar resolution. The OWAB column contains the minimum, median, 95<sup>th</sup> percentile and maximum values of the occupancy-weighted average B-factor per residue. The column labelled ‘Q< 0.9’ lists the number of (and percentage) of residues with an average occupancy less than 0.9.

Mol	Chain	Analysed	<RSRZ>	#RSRZ>2	OWAB(Å <sup>2</sup> )	Q<0.9
1	A	529/539 (98%)	0.17	33 (6%) 20 9	60, 136, 205, 285	0
1	B	497/539 (92%)	0.11	26 (5%) 27 12	45, 116, 196, 239	0
1	C	499/539 (92%)	-0.04	27 (5%) 25 12	32, 94, 166, 234	0
All	All	1525/1617 (94%)	0.08	86 (5%) 24 11	32, 114, 196, 285	0

The worst 5 of 86 RSRZ outliers are listed below:

Mol	Chain	Res	Type	RSRZ
1	C	513	ASN	7.4
1	A	79	GLY	5.7
1	A	60	TRP	4.6
1	A	226	GLY	4.6
1	A	228	LYS	4.5

### 6.2 Non-standard residues in protein, DNA, RNA chains [i](#)

There are no non-standard protein/DNA/RNA residues in this entry.

### 6.3 Carbohydrates [i](#)

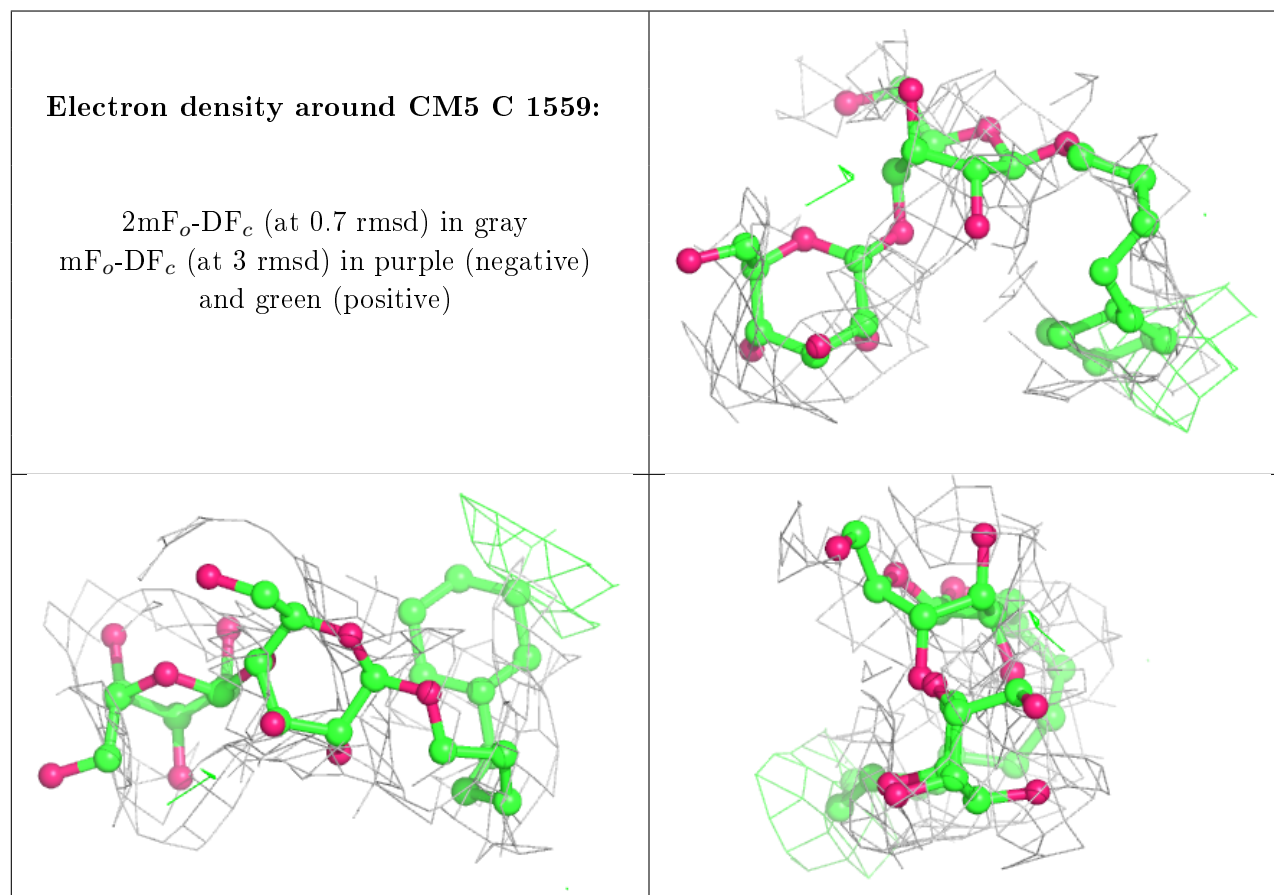
There are no monosaccharides in this entry.

### 6.4 Ligands [i](#)

In the following table, the Atoms column lists the number of modelled atoms in the group and the number defined in the chemical component dictionary. The B-factors column lists the minimum, median, 95<sup>th</sup> percentile and maximum values of B factors of atoms in the group. The column labelled ‘Q< 0.9’ lists the number of atoms with occupancy less than 0.9.

Mol	Type	Chain	Res	Atoms	RSCC	RSR	B-factors( $\text{\AA}^2$ )	Q<0.9
7	CM5	C	1559	34/34	0.41	0.26	162,196,203,205	0
2	NA	B	1558	1/1	0.44	0.46	266,266,266,266	0
6	FLC	C	1558	13/13	0.53	0.28	175,177,180,180	0
5	CL	C	1555	1/1	0.87	0.29	105,105,105,105	0
5	CL	B	1561	1/1	0.88	0.26	114,114,114,114	0
3	BET	C	1556	8/8	0.91	0.28	106,110,128,129	0
4	PEG	B	1560	7/7	0.92	0.24	89,91,94,95	0
3	BET	B	1559	8/8	0.93	0.31	117,122,128,131	0
5	CL	C	1554	1/1	0.96	0.13	76,76,76,76	0
5	CL	C	1557	1/1	0.99	0.18	86,86,86,86	0

The following is a graphical depiction of the model fit to experimental electron density of all instances of the Ligand of Interest. In addition, ligands with molecular weight > 250 and outliers as shown on the geometry validation Tables will also be included. Each fit is shown from different orientation to approximate a three-dimensional view.



## 6.5 Other polymers ⓘ

There are no such residues in this entry.