



Full wwPDB X-ray Structure Validation Report ⓘ

May 19, 2020 – 12:26 am BST

PDB ID : 2AKJ
Title : Structure of spinach nitrite reductase
Authors : Swamy, U.; Wang, M.; Tripathy, J.N.; Kim, S.-K.; Hirasawa, M.; Knaff, D.B.; Allen, J.P.
Deposited on : 2005-08-03
Resolution : 2.80 Å(reported)

This is a Full wwPDB X-ray Structure Validation Report for a publicly released PDB entry.

We welcome your comments at validation@mail.wwpdb.org

A user guide is available at

<https://www.wwpdb.org/validation/2017/XrayValidationReportHelp>

with specific help available everywhere you see the ⓘ symbol.

The following versions of software and data (see [references ⓘ](#)) were used in the production of this report:

MolProbity	:	4.02b-467
Mogul	:	1.8.5 (274361), CSD as541be (2020)
Xtriage (Phenix)	:	1.13
EDS	:	2.11
buster-report	:	1.1.7 (2018)
Percentile statistics	:	20191225.v01 (using entries in the PDB archive December 25th 2019)
Refmac	:	5.8.0158
CCP4	:	7.0.044 (Gargrove)
Ideal geometry (proteins)	:	Engh & Huber (2001)
Ideal geometry (DNA, RNA)	:	Parkinson et al. (1996)
Validation Pipeline (wwPDB-VP)	:	2.11

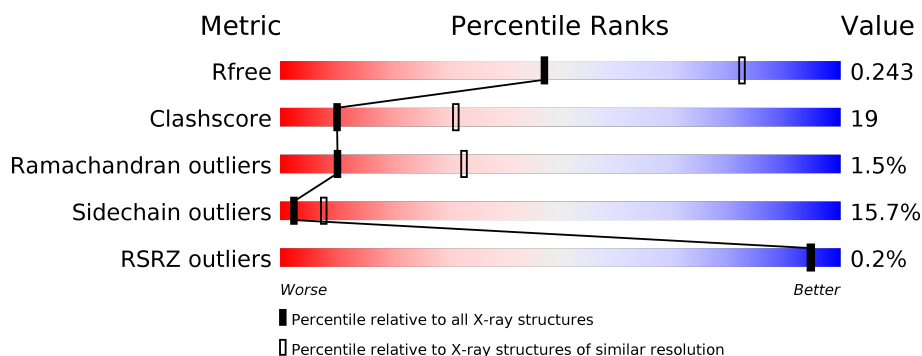
1 Overall quality at a glance

The following experimental techniques were used to determine the structure:

X-RAY DIFFRACTION

The reported resolution of this entry is 2.80 Å.

Percentile scores (ranging between 0-100) for global validation metrics of the entry are shown in the following graphic. The table shows the number of entries on which the scores are based.



Metric	Whole archive (#Entries)	Similar resolution (#Entries, resolution range(Å))
R_{free}	130704	3140 (2.80-2.80)
Clashscore	141614	3569 (2.80-2.80)
Ramachandran outliers	138981	3498 (2.80-2.80)
Sidechain outliers	138945	3500 (2.80-2.80)
RSRZ outliers	127900	3078 (2.80-2.80)

The table below summarises the geometric issues observed across the polymeric chains and their fit to the electron density. The red, orange, yellow and green segments on the lower bar indicate the fraction of residues that contain outliers for ≥ 3 , 2, 1 and 0 types of geometric quality criteria respectively. A grey segment represents the fraction of residues that are not modelled. The numeric value for each fraction is indicated below the corresponding segment, with a dot representing fractions $\leq 5\%$. The upper red bar (where present) indicates the fraction of residues that have poor fit to the electron density. The numeric value is given above the bar.

Mol	Chain	Length	Quality of chain
1	A	608	 52% 28% 7% • 12%

2 Entry composition

There are 4 unique types of molecules in this entry. The entry contains 4299 atoms, of which 0 are hydrogens and 0 are deuteriums.

In the tables below, the ZeroOcc column contains the number of atoms modelled with zero occupancy, the AltConf column contains the number of residues with at least one atom in alternate conformation and the Trace column contains the number of residues modelled with at most 2 atoms.

- Molecule 1 is a protein called Ferredoxin–nitrite reductase, chloroplast.

Mol	Chain	Residues	Atoms					ZeroOcc	AltConf	Trace
			Total	C	N	O	S			
1	A	535	4222	2661	753	780	28	0	0	0

There are 46 discrepancies between the modelled and reference sequences:

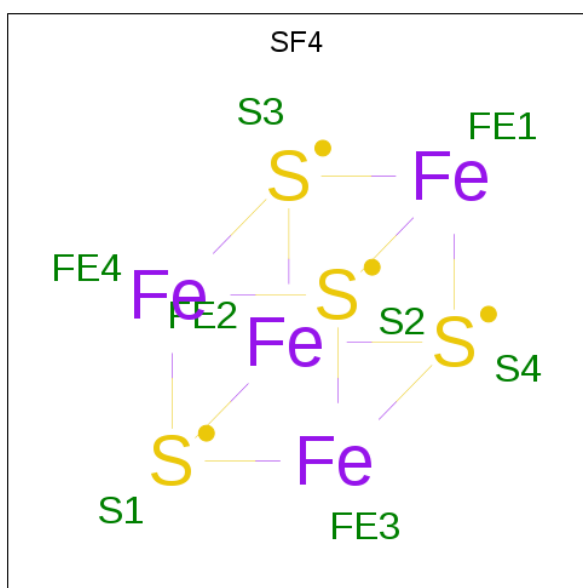
Chain	Residue	Modelled	Actual	Comment	Reference
A	-45	MET	-	EXPRESSION TAG	UNP P05314
A	-44	HIS	-	EXPRESSION TAG	UNP P05314
A	-43	HIS	-	EXPRESSION TAG	UNP P05314
A	-42	HIS	-	EXPRESSION TAG	UNP P05314
A	-41	HIS	-	EXPRESSION TAG	UNP P05314
A	-40	HIS	-	EXPRESSION TAG	UNP P05314
A	-39	HIS	-	EXPRESSION TAG	UNP P05314
A	-38	SER	-	EXPRESSION TAG	UNP P05314
A	-37	SER	-	EXPRESSION TAG	UNP P05314
A	-36	GLY	-	EXPRESSION TAG	UNP P05314
A	-35	LEU	-	EXPRESSION TAG	UNP P05314
A	-34	VAL	-	EXPRESSION TAG	UNP P05314
A	-33	PRO	-	EXPRESSION TAG	UNP P05314
A	-32	ARG	-	EXPRESSION TAG	UNP P05314
A	-31	GLY	-	EXPRESSION TAG	UNP P05314
A	-30	SER	-	EXPRESSION TAG	UNP P05314
A	-29	GLY	-	EXPRESSION TAG	UNP P05314
A	-28	MET	-	EXPRESSION TAG	UNP P05314
A	-27	LYS	-	EXPRESSION TAG	UNP P05314
A	-26	GLU	-	EXPRESSION TAG	UNP P05314
A	-25	THR	-	EXPRESSION TAG	UNP P05314
A	-24	ALA	-	EXPRESSION TAG	UNP P05314
A	-23	ALA	-	EXPRESSION TAG	UNP P05314
A	-22	ALA	-	EXPRESSION TAG	UNP P05314
A	-21	LYS	-	EXPRESSION TAG	UNP P05314
A	-20	PHE	-	EXPRESSION TAG	UNP P05314
A	-19	GLU	-	EXPRESSION TAG	UNP P05314

Continued on next page...

Continued from previous page...

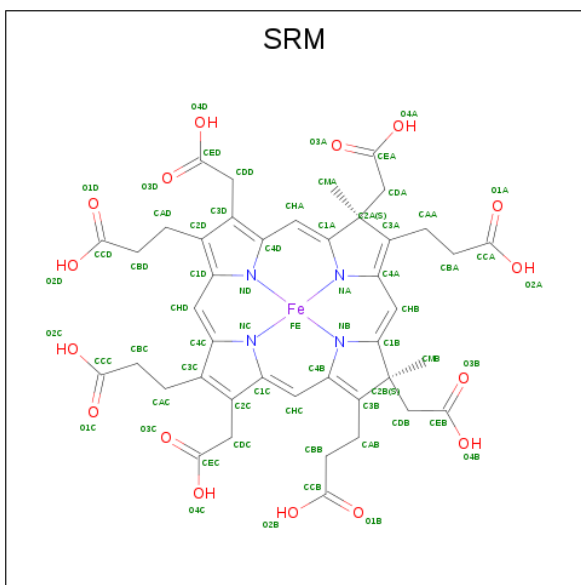
Chain	Residue	Modelled	Actual	Comment	Reference
A	-18	ARG	-	EXPRESSION TAG	UNP P05314
A	-17	GLN	-	EXPRESSION TAG	UNP P05314
A	-16	HIS	-	EXPRESSION TAG	UNP P05314
A	-15	MET	-	EXPRESSION TAG	UNP P05314
A	-14	ASP	-	EXPRESSION TAG	UNP P05314
A	-13	SER	-	EXPRESSION TAG	UNP P05314
A	-12	PRO	-	EXPRESSION TAG	UNP P05314
A	-11	ASP	-	EXPRESSION TAG	UNP P05314
A	-10	LEU	-	EXPRESSION TAG	UNP P05314
A	-9	GLY	-	EXPRESSION TAG	UNP P05314
A	-8	THR	-	EXPRESSION TAG	UNP P05314
A	-7	ASP	-	EXPRESSION TAG	UNP P05314
A	-6	ASP	-	EXPRESSION TAG	UNP P05314
A	-5	ASP	-	EXPRESSION TAG	UNP P05314
A	-4	ASP	-	EXPRESSION TAG	UNP P05314
A	-3	LYS	-	EXPRESSION TAG	UNP P05314
A	-2	ALA	-	EXPRESSION TAG	UNP P05314
A	-1	MET	-	EXPRESSION TAG	UNP P05314
A	0	GLY	-	EXPRESSION TAG	UNP P05314

- Molecule 2 is IRON/SULFUR CLUSTER (three-letter code: SF4) (formula: Fe₄S₄).



Mol	Chain	Residues	Atoms			ZeroOcc	AltConf
2	A	1	Total	Fe	S	0	0
			8	4	4		

- Molecule 3 is SIROHEME (three-letter code: SRM) (formula: C₄₂H₄₂FeN₄O₁₆).



Mol	Chain	Residues	Atoms					ZeroOcc	AltConf
3	A	1	Total 63	C 42	Fe 1	N 4	O 16	0	0

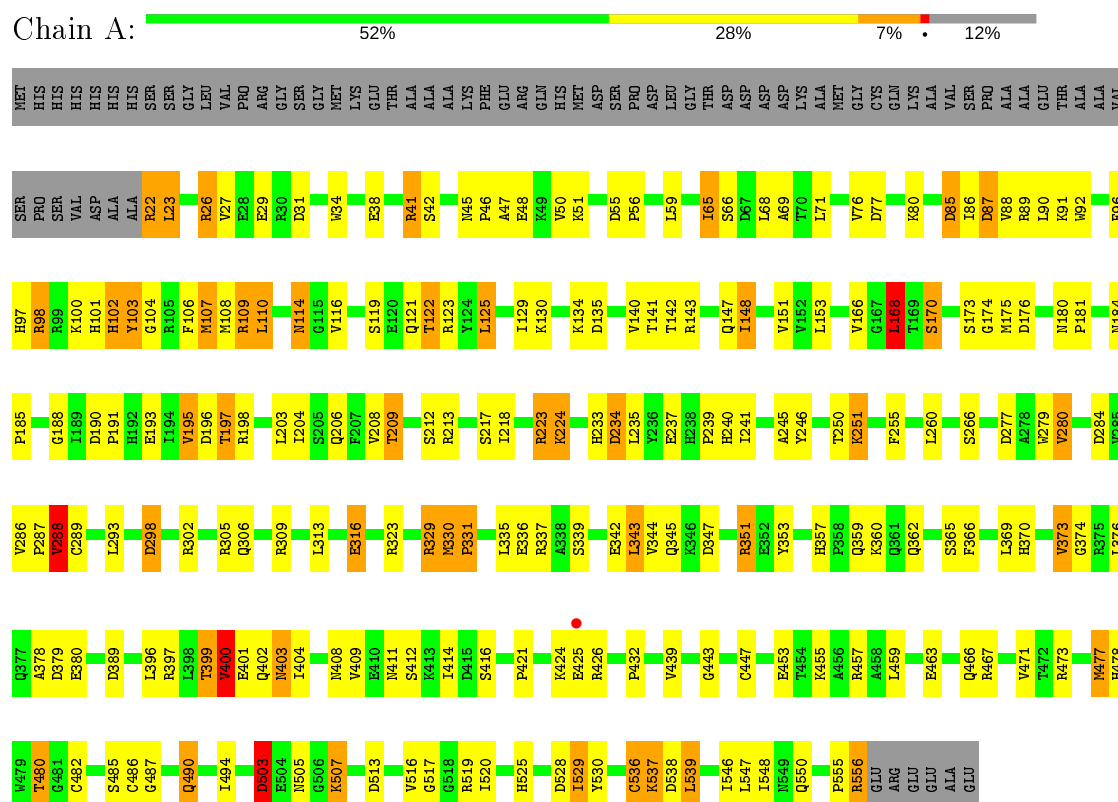
- Molecule 4 is water.

Mol	Chain	Residues	Atoms	ZeroOcc	AltConf
4	A	6	Total O 6 6	0	0

3 Residue-property plots

These plots are drawn for all protein, RNA and DNA chains in the entry. The first graphic for a chain summarises the proportions of the various outlier classes displayed in the second graphic. The second graphic shows the sequence view annotated by issues in geometry and electron density. Residues are color-coded according to the number of geometric quality criteria for which they contain at least one outlier: green = 0, yellow = 1, orange = 2 and red = 3 or more. A red dot above a residue indicates a poor fit to the electron density ($RSRZ > 2$). Stretches of 2 or more consecutive residues without any outlier are shown as a green connector. Residues present in the sample, but not in the model, are shown in grey.

- Molecule 1: Ferredoxin-nitrite reductase, chloroplast



4 Data and refinement statistics

Property	Value	Source
Space group	P 41 21 2	Depositor
Cell constants a, b, c, α , β , γ	128.97Å 128.97Å 120.95Å 90.00° 90.00° 90.00°	Depositor
Resolution (Å)	40.00 – 2.80 19.92 – 2.80	Depositor EDS
% Data completeness (in resolution range)	99.6 (40.00-2.80) 99.9 (19.92-2.80)	Depositor EDS
R_{merge}	0.12	Depositor
R_{sym}	(Not available)	Depositor
$\langle I/\sigma(I) \rangle$ ¹	2.27 (at 2.79Å)	Xtriage
Refinement program	REFMAC 5.2	Depositor
R, R_{free}	0.250 , 0.300 0.251 , 0.243	Depositor DCC
R_{free} test set	1280 reflections (5.00%)	wwPDB-VP
Wilson B-factor (Å ²)	49.2	Xtriage
Anisotropy	0.613	Xtriage
Bulk solvent k_{sol} (e/Å ³), B_{sol} (Å ²)	0.31 , 30.6	EDS
L-test for twinning ²	$\langle L \rangle = 0.50$, $\langle L^2 \rangle = 0.34$	Xtriage
Estimated twinning fraction	No twinning to report.	Xtriage
F_o, F_c correlation	0.91	EDS
Total number of atoms	4299	wwPDB-VP
Average B, all atoms (Å ²)	38.0	wwPDB-VP

Xtriage's analysis on translational NCS is as follows: *The largest off-origin peak in the Patterson function is 5.41% of the height of the origin peak. No significant pseudotranslation is detected.*

¹Intensities estimated from amplitudes.

²Theoretical values of $\langle |L| \rangle$, $\langle L^2 \rangle$ for acentric reflections are 0.5, 0.333 respectively for untwinned datasets, and 0.375, 0.2 for perfectly twinned datasets.

5 Model quality

5.1 Standard geometry

Bond lengths and bond angles in the following residue types are not validated in this section: SF4, SRM

The Z score for a bond length (or angle) is the number of standard deviations the observed value is removed from the expected value. A bond length (or angle) with $|Z| > 5$ is considered an outlier worth inspection. RMSZ is the root-mean-square of all Z scores of the bond lengths (or angles).

Mol	Chain	Bond lengths		Bond angles	
		RMSZ	$\# Z > 5$	RMSZ	$\# Z > 5$
1	A	0.62	0/4307	0.90	18/5818 (0.3%)

There are no bond length outliers.

All (18) bond angle outliers are listed below:

Mol	Chain	Res	Type	Atoms	Z	Observed(°)	Ideal(°)
1	A	379	ASP	CB-CG-OD2	7.38	124.95	118.30
1	A	195	VAL	CB-CA-C	-7.12	97.87	111.40
1	A	85	ASP	CB-CG-OD2	6.91	124.52	118.30
1	A	31	ASP	CB-CG-OD2	6.55	124.19	118.30
1	A	347	ASP	CB-CG-OD2	6.48	124.13	118.30
1	A	503	ASP	CB-CG-OD2	6.30	123.97	118.30
1	A	298	ASP	CB-CG-OD2	6.08	123.77	118.30
1	A	77	ASP	CB-CG-OD2	5.97	123.68	118.30
1	A	513	ASP	CB-CG-OD2	5.77	123.49	118.30
1	A	528	ASP	CB-CG-OD2	5.72	123.45	118.30
1	A	174	GLY	N-CA-C	5.68	127.29	113.10
1	A	168	LEU	CA-CB-CG	5.61	128.21	115.30
1	A	288	VAL	CB-CA-C	-5.61	100.75	111.40
1	A	87	ASP	CB-CG-OD2	5.59	123.33	118.30
1	A	389	ASP	CB-CG-OD2	5.38	123.14	118.30
1	A	330	MET	CB-CG-SD	-5.26	96.62	112.40
1	A	23	LEU	CA-CB-CG	5.05	126.91	115.30
1	A	71	LEU	CA-CB-CG	5.02	126.84	115.30

There are no chirality outliers.

There are no planarity outliers.

5.2 Too-close contacts ⓘ

In the following table, the Non-H and H(model) columns list the number of non-hydrogen atoms and hydrogen atoms in the chain respectively. The H(added) column lists the number of hydrogen atoms added and optimized by MolProbity. The Clashes column lists the number of clashes within the asymmetric unit, whereas Symm-Clashes lists symmetry related clashes.

Mol	Chain	Non-H	H(model)	H(added)	Clashes	Symm-Clashes
1	A	4222	0	4238	162	0
2	A	8	0	0	1	0
3	A	63	0	34	10	0
4	A	6	0	0	0	0
All	All	4299	0	4272	162	0

The all-atom clashscore is defined as the number of clashes found per 1000 atoms (including hydrogen atoms). The all-atom clashscore for this structure is 19.

All (162) close contacts within the same asymmetric unit are listed below, sorted by their clash magnitude.

Atom-1	Atom-2	Interatomic distance (Å)	Clash overlap (Å)
1:A:209:THR:HG23	1:A:212:SER:H	1.25	1.02
1:A:351:ARG:HH11	1:A:351:ARG:HG3	1.28	0.99
1:A:107:MET:HE3	1:A:147:GLN:HB3	1.47	0.96
1:A:330:MET:HB2	1:A:331:PRO:HD2	1.49	0.95
1:A:490:GLN:H	1:A:490:GLN:NE2	1.66	0.93
1:A:107:MET:HE2	1:A:108:MET:C	1.91	0.91
1:A:490:GLN:N	1:A:490:GLN:HE21	1.66	0.91
1:A:490:GLN:H	1:A:490:GLN:HE21	0.87	0.86
1:A:529:ILE:HD12	1:A:529:ILE:H	1.44	0.82
1:A:233:HIS:HD2	1:A:345:GLN:H	1.29	0.81
1:A:97:HIS:HE1	1:A:104:GLY:H	1.28	0.81
1:A:206:GLN:OE1	1:A:206:GLN:HA	1.82	0.79
1:A:459:LEU:O	1:A:463:GLU:HG2	1.80	0.79
1:A:359:GLN:HE22	1:A:408:ASN:H	1.31	0.77
1:A:411:ASN:O	1:A:414:ILE:HG12	1.89	0.73
1:A:190:ASP:HB3	1:A:193:GLU:HB2	1.71	0.72
1:A:359:GLN:NE2	1:A:408:ASN:H	1.88	0.70
1:A:48:GLU:OE2	1:A:51:LYS:NZ	2.22	0.70
1:A:68:LEU:HD21	1:A:85:ASP:HB3	1.72	0.70
1:A:503:ASP:HB2	1:A:507:LYS:H	1.56	0.70
1:A:359:GLN:HE21	1:A:366:PHE:HB3	1.58	0.69
1:A:323:ARG:HH21	1:A:323:ARG:HG2	1.58	0.69
1:A:107:MET:HE3	1:A:147:GLN:CB	2.23	0.68

Continued on next page...

Continued from previous page...

Atom-1	Atom-2	Interatomic distance (Å)	Clash overlap (Å)
1:A:478:HIS:HD2	1:A:487:GLY:O	1.75	0.68
1:A:196:ASP:OD2	1:A:198:ARG:HG3	1.96	0.66
1:A:140:VAL:O	1:A:402:GLN:HG2	1.95	0.66
1:A:280:VAL:HG21	1:A:288:VAL:HG22	1.79	0.65
1:A:280:VAL:HG21	1:A:288:VAL:CG2	2.27	0.65
1:A:50:VAL:O	1:A:89:ARG:NH2	2.30	0.65
1:A:330:MET:HB2	1:A:331:PRO:CD	2.26	0.64
1:A:457:ARG:HH11	1:A:536:CYS:HB3	1.62	0.64
1:A:141:THR:CB	3:A:564:SRM:HBB2	2.28	0.64
1:A:22:ARG:NH1	1:A:316:GLU:OE2	2.31	0.63
1:A:369:LEU:O	1:A:403:ASN:HB3	1.98	0.63
1:A:298:ASP:OD1	1:A:329:ARG:NH1	2.32	0.62
1:A:457:ARG:NH1	1:A:536:CYS:HB3	2.14	0.62
1:A:26:ARG:HG2	1:A:298:ASP:O	1.99	0.62
1:A:209:THR:CG2	1:A:212:SER:H	2.07	0.62
1:A:196:ASP:OD1	1:A:198:ARG:NH2	2.33	0.62
1:A:198:ARG:HG3	1:A:198:ARG:HH21	1.64	0.61
1:A:85:ASP:HA	1:A:89:ARG:HB2	1.82	0.61
1:A:380:GLU:OE1	1:A:426:ARG:HD3	2.02	0.60
1:A:351:ARG:HH11	1:A:351:ARG:CG	2.10	0.60
1:A:443:GLY:O	1:A:447:CYS:HB3	2.02	0.59
1:A:234:ASP:OD1	1:A:351:ARG:NH1	2.36	0.59
1:A:353:TYR:OH	1:A:401:GLU:HB2	2.03	0.58
1:A:87:ASP:OD2	1:A:97:HIS:HD2	1.84	0.58
1:A:107:MET:HE2	1:A:108:MET:O	2.04	0.57
1:A:374:GLY:O	1:A:376:LEU:HD12	2.04	0.57
1:A:251:LYS:HB2	1:A:279:TRP:CZ2	2.40	0.57
1:A:478:HIS:CD2	1:A:487:GLY:O	2.58	0.56
1:A:503:ASP:HB3	1:A:505:ASN:H	1.70	0.56
1:A:277:ASP:OD2	1:A:337:ARG:NH2	2.34	0.56
1:A:102:HIS:HE1	1:A:135:ASP:OD1	1.88	0.55
1:A:490:GLN:N	1:A:490:GLN:NE2	2.40	0.55
1:A:34:TRP:CD1	1:A:217:SER:HA	2.41	0.55
1:A:38:GLU:O	1:A:41:ARG:HB2	2.06	0.55
1:A:555:PRO:O	1:A:556:ARG:HB3	2.06	0.55
1:A:141:THR:CG2	1:A:147:GLN:HG3	2.38	0.54
1:A:351:ARG:NH1	1:A:351:ARG:HG3	2.09	0.54
1:A:48:GLU:OE1	1:A:302:ARG:HD3	2.08	0.53
1:A:204:ILE:O	1:A:208:VAL:HG13	2.09	0.53
1:A:477:MET:HA	1:A:494:ILE:O	2.09	0.53
1:A:96:PHE:CE1	1:A:109:ARG:HB2	2.44	0.53

Continued on next page...

Continued from previous page...

Atom-1	Atom-2	Interatomic distance (Å)	Clash overlap (Å)
1:A:76:VAL:HG11	1:A:86:ILE:HG13	1.90	0.52
1:A:357:HIS:HB2	1:A:366:PHE:CZ	2.45	0.52
1:A:480:THR:HG21	1:A:485:SER:HA	1.91	0.52
1:A:109:ARG:NH2	1:A:147:GLN:OE1	2.43	0.52
1:A:486:CYS:HB2	2:A:563:SF4:S4	2.49	0.52
1:A:536:CYS:HA	1:A:539:LEU:HD12	1.92	0.52
1:A:365:SER:OG	1:A:411:ASN:ND2	2.41	0.52
1:A:141:THR:HB	3:A:564:SRM:HBB2	1.92	0.51
1:A:45:ASN:HD21	1:A:47:ALA:HB3	1.74	0.51
1:A:223:ARG:NH1	3:A:564:SRM:O4D	2.44	0.51
1:A:45:ASN:HB2	1:A:46:PRO:CD	2.41	0.51
1:A:184:ASN:HB2	1:A:237:GLU:OE2	2.10	0.51
1:A:373:VAL:O	1:A:455:LYS:HE3	2.10	0.51
1:A:166:VAL:HG23	1:A:168:LEU:HD22	1.91	0.50
1:A:129:ILE:HD11	1:A:148:ILE:HG13	1.92	0.50
1:A:109:ARG:O	1:A:170:SER:HB2	2.11	0.50
1:A:280:VAL:HG22	1:A:284:ASP:CB	2.41	0.50
1:A:110:LEU:HA	1:A:170:SER:HA	1.94	0.50
1:A:251:LYS:NZ	1:A:336:GLU:HG2	2.26	0.49
1:A:529:ILE:CD1	1:A:529:ILE:H	2.10	0.49
1:A:114:ASN:HB3	1:A:116:VAL:HG23	1.93	0.49
1:A:224:LYS:NZ	3:A:564:SRM:O1C	2.43	0.49
1:A:380:GLU:OE1	1:A:426:ARG:CD	2.61	0.49
1:A:114:ASN:OD1	1:A:197:THR:HG23	2.11	0.49
1:A:240:HIS:CD2	1:A:241:ILE:HG12	2.47	0.49
1:A:143:ARG:HD2	3:A:564:SRM:O3C	2.13	0.48
1:A:245:ALA:HB3	1:A:260:LEU:HB2	1.95	0.48
1:A:286:VAL:HB	1:A:287:PRO:HD3	1.95	0.48
1:A:114:ASN:OD1	1:A:197:THR:CG2	2.62	0.48
1:A:507:LYS:HE2	1:A:507:LYS:HB3	1.38	0.48
1:A:399:THR:HG23	1:A:403:ASN:O	2.14	0.48
1:A:87:ASP:OD2	1:A:97:HIS:CD2	2.65	0.48
1:A:148:ILE:HD12	1:A:148:ILE:HA	1.61	0.47
1:A:198:ARG:NH2	1:A:198:ARG:HG3	2.29	0.47
1:A:233:HIS:CD2	1:A:345:GLN:H	2.20	0.47
1:A:529:ILE:N	1:A:529:ILE:HD12	2.22	0.47
1:A:96:PHE:HE1	1:A:109:ARG:HB2	1.79	0.47
1:A:109:ARG:HG3	1:A:147:GLN:OE1	2.15	0.47
1:A:106:PHE:HB2	1:A:151:VAL:HG22	1.98	0.46
1:A:141:THR:HG22	1:A:147:GLN:HG3	1.97	0.46
1:A:100:LYS:HD3	1:A:101:HIS:NE2	2.30	0.46

Continued on next page...

Continued from previous page...

Atom-1	Atom-2	Interatomic distance (Å)	Clash overlap (Å)
1:A:251:LYS:HB2	1:A:279:TRP:CE2	2.50	0.46
1:A:129:ILE:HG22	1:A:378:ALA:HB2	1.96	0.46
1:A:519:ARG:NH1	1:A:525:HIS:HB2	2.30	0.46
1:A:119:SER:O	1:A:123:ARG:HB2	2.16	0.46
1:A:246:TYR:OH	1:A:289:CYS:HB2	2.16	0.46
1:A:184:ASN:H	1:A:197:THR:HG21	1.79	0.45
1:A:209:THR:HG23	1:A:212:SER:N	2.09	0.45
1:A:537:LYS:HD3	1:A:538:ASP:OD1	2.16	0.45
1:A:122:THR:HG21	1:A:396:LEU:HD12	1.97	0.45
1:A:188:GLY:HA3	1:A:198:ARG:NH2	2.31	0.45
1:A:191:PRO:HA	1:A:360:LYS:HB3	1.99	0.45
1:A:59:LEU:O	1:A:65:ILE:HB	2.17	0.45
1:A:530:TYR:CE2	1:A:546:ILE:HD11	2.51	0.45
1:A:69:ALA:HA	1:A:153:LEU:HB3	1.99	0.44
1:A:102:HIS:O	1:A:103:TYR:C	2.56	0.44
1:A:486:CYS:HB3	3:A:564:SRM:HDB1	1.99	0.44
1:A:142:THR:O	1:A:400:VAL:HG22	2.17	0.44
1:A:109:ARG:HD2	1:A:173:SER:HB2	2.00	0.43
1:A:92:TRP:CZ3	1:A:175:MET:HG3	2.53	0.43
1:A:141:THR:CB	3:A:564:SRM:CBB	2.95	0.43
1:A:473:ARG:HH11	1:A:473:ARG:CB	2.31	0.43
1:A:34:TRP:NE1	1:A:217:SER:HA	2.34	0.43
1:A:251:LYS:HZ1	1:A:336:GLU:HG2	1.83	0.43
1:A:109:ARG:HB3	1:A:173:SER:OG	2.19	0.43
1:A:280:VAL:HG22	1:A:284:ASP:HB2	2.01	0.43
1:A:180:ASN:HA	1:A:181:PRO:HD2	1.88	0.43
1:A:251:LYS:HG3	1:A:279:TRP:CE3	2.54	0.43
1:A:38:GLU:HA	1:A:41:ARG:HD3	2.01	0.43
1:A:250:THR:HG23	1:A:343:LEU:HD21	2.00	0.43
1:A:432:PRO:HB2	1:A:466:GLN:NE2	2.34	0.43
1:A:88:VAL:O	1:A:91:LYS:HG3	2.18	0.43
1:A:233:HIS:HD2	1:A:345:GLN:N	2.07	0.42
1:A:153:LEU:HA	1:A:153:LEU:HD23	1.64	0.42
1:A:121:GLN:HG2	1:A:168:LEU:CD2	2.49	0.42
1:A:241:ILE:O	1:A:241:ILE:HG22	2.19	0.42
1:A:185:PRO:O	1:A:397:ARG:HG2	2.20	0.42
1:A:76:VAL:CG1	1:A:86:ILE:HG13	2.50	0.42
1:A:516:VAL:HG11	1:A:550:GLN:OE1	2.19	0.41
1:A:125:LEU:HD12	1:A:125:LEU:HA	1.89	0.41
1:A:109:ARG:NH2	3:A:564:SRM:HAB1	2.35	0.41
1:A:97:HIS:HE1	1:A:104:GLY:N	2.08	0.41

Continued on next page...

Continued from previous page...

Atom-1	Atom-2	Interatomic distance (Å)	Clash overlap (Å)
1:A:121:GLN:HG2	1:A:168:LEU:HD21	2.02	0.41
1:A:98:ARG:NH1	3:A:564:SRM:O4A	2.54	0.41
1:A:107:MET:HE2	1:A:108:MET:CA	2.50	0.41
1:A:195:VAL:HG11	1:A:255:PHE:CZ	2.55	0.41
1:A:280:VAL:HG22	1:A:284:ASP:HB3	2.01	0.41
1:A:457:ARG:HH11	1:A:536:CYS:CB	2.33	0.41
1:A:536:CYS:SG	1:A:539:LEU:HD12	2.61	0.41
1:A:235:LEU:HD13	1:A:239:PRO:HG3	2.03	0.41
1:A:266:SER:HB2	1:A:306:GLN:OE1	2.21	0.41
1:A:473:ARG:HH11	1:A:473:ARG:HB3	1.85	0.41
1:A:55:ASP:HA	1:A:56:PRO:HD3	1.93	0.41
1:A:516:VAL:CG1	1:A:517:GLY:N	2.84	0.40
1:A:107:MET:HE2	1:A:108:MET:N	2.36	0.40
1:A:280:VAL:HG21	1:A:288:VAL:HG21	2.01	0.40
1:A:309:ARG:HH11	3:A:564:SRM:CCC	2.35	0.40
1:A:85:ASP:O	1:A:90:LEU:HB2	2.21	0.40

There are no symmetry-related clashes.

5.3 Torsion angles [i](#)

5.3.1 Protein backbone [i](#)

In the following table, the Percentiles column shows the percent Ramachandran outliers of the chain as a percentile score with respect to all X-ray entries followed by that with respect to entries of similar resolution.

The Analysed column shows the number of residues for which the backbone conformation was analysed, and the total number of residues.

Mol	Chain	Analysed	Favoured	Allowed	Outliers	Percentiles	
1	A	533/608 (88%)	490 (92%)	35 (7%)	8 (2%)	10	33

All (8) Ramachandran outliers are listed below:

Mol	Chain	Res	Type
1	A	503	ASP
1	A	370	HIS
1	A	425	GLU
1	A	42	SER
1	A	103	TYR

Continued on next page...

Continued from previous page...

Mol	Chain	Res	Type
1	A	331	PRO
1	A	400	VAL
1	A	373	VAL

5.3.2 Protein sidechains ⓘ

In the following table, the Percentiles column shows the percent sidechain outliers of the chain as a percentile score with respect to all X-ray entries followed by that with respect to entries of similar resolution.

The Analysed column shows the number of residues for which the sidechain conformation was analysed, and the total number of residues.

Mol	Chain	Analysed	Rotameric	Outliers	Percentiles
1	A	464/520 (89%)	391 (84%)	73 (16%)	2 8

All (73) residues with a non-rotameric sidechain are listed below:

Mol	Chain	Res	Type
1	A	22	ARG
1	A	23	LEU
1	A	26	ARG
1	A	27	VAL
1	A	29	GLU
1	A	41	ARG
1	A	65	ILE
1	A	66	SER
1	A	80	LYS
1	A	98	ARG
1	A	102	HIS
1	A	107	MET
1	A	109	ARG
1	A	110	LEU
1	A	114	ASN
1	A	122	THR
1	A	125	LEU
1	A	130	LYS
1	A	134	LYS
1	A	148	ILE
1	A	168	LEU
1	A	170	SER
1	A	176	ASP

Continued on next page...

Continued from previous page...

Mol	Chain	Res	Type
1	A	197	THR
1	A	203	LEU
1	A	209	THR
1	A	213	ARG
1	A	218	ILE
1	A	223	ARG
1	A	224	LYS
1	A	234	ASP
1	A	251	LYS
1	A	280	VAL
1	A	288	VAL
1	A	293	LEU
1	A	305	ARG
1	A	313	LEU
1	A	316	GLU
1	A	329	ARG
1	A	335	LEU
1	A	339	SER
1	A	342	GLU
1	A	343	LEU
1	A	344	VAL
1	A	351	ARG
1	A	362	GLN
1	A	399	THR
1	A	400	VAL
1	A	403	ASN
1	A	404	ILE
1	A	409	VAL
1	A	412	SER
1	A	416	SER
1	A	421	PRO
1	A	424	LYS
1	A	439	VAL
1	A	453	GLU
1	A	467	ARG
1	A	471	VAL
1	A	477	MET
1	A	480	THR
1	A	482	CYS
1	A	490	GLN
1	A	503	ASP
1	A	507	LYS

Continued on next page...

Continued from previous page...

Mol	Chain	Res	Type
1	A	520	ILE
1	A	529	ILE
1	A	536	CYS
1	A	537	LYS
1	A	539	LEU
1	A	547	LEU
1	A	548	ILE
1	A	556	ARG

Some sidechains can be flipped to improve hydrogen bonding and reduce clashes. All (13) such sidechains are listed below:

Mol	Chain	Res	Type
1	A	45	ASN
1	A	82	ASN
1	A	97	HIS
1	A	102	HIS
1	A	177	ASN
1	A	233	HIS
1	A	240	HIS
1	A	359	GLN
1	A	362	GLN
1	A	403	ASN
1	A	411	ASN
1	A	478	HIS
1	A	490	GLN

5.3.3 RNA ⓘ

There are no RNA molecules in this entry.

5.4 Non-standard residues in protein, DNA, RNA chains ⓘ

There are no non-standard protein/DNA/RNA residues in this entry.

5.5 Carbohydrates ⓘ

There are no carbohydrates in this entry.

5.6 Ligand geometry

2 ligands are modelled in this entry.

In the following table, the Counts columns list the number of bonds (or angles) for which Mogul statistics could be retrieved, the number of bonds (or angles) that are observed in the model and the number of bonds (or angles) that are defined in the Chemical Component Dictionary. The Link column lists molecule types, if any, to which the group is linked. The Z score for a bond length (or angle) is the number of standard deviations the observed value is removed from the expected value. A bond length (or angle) with $|Z| > 2$ is considered an outlier worth inspection. RMSZ is the root-mean-square of all Z scores of the bond lengths (or angles).

Mol	Type	Chain	Res	Link	Bond lengths			Bond angles		
					Counts	RMSZ	# Z > 2	Counts	RMSZ	# Z > 2
2	SF4	A	563	1	0,12,12	0.00	-	-		
3	SRM	A	564	1	34,70,70	1.43	5 (14%)	38,112,112	3.31	15 (39%)

In the following table, the Chirals column lists the number of chiral outliers, the number of chiral centers analysed, the number of these observed in the model and the number defined in the Chemical Component Dictionary. Similar counts are reported in the Torsion and Rings columns. '-' means no outliers of that kind were identified.

Mol	Type	Chain	Res	Link	Chirals	Torsions	Rings
2	SF4	A	563	1	-	-	0/6/5/5
3	SRM	A	564	1	-	7/22/126/126	-

All (5) bond length outliers are listed below:

Mol	Chain	Res	Type	Atoms	Z	Observed(Å)	Ideal(Å)
3	A	564	SRM	C3D-C2D	3.36	1.47	1.39
3	A	564	SRM	C4C-C3C	3.26	1.50	1.42
3	A	564	SRM	C3C-C2C	3.00	1.46	1.37
3	A	564	SRM	C1C-C2C	2.42	1.48	1.42
3	A	564	SRM	C4A-NA	-2.40	1.35	1.39

All (15) bond angle outliers are listed below:

Mol	Chain	Res	Type	Atoms	Z	Observed(°)	Ideal(°)
3	A	564	SRM	CAB-C3B-C2B	-11.35	110.69	123.52
3	A	564	SRM	CAA-C3A-C2A	-7.78	114.72	123.52
3	A	564	SRM	CAC-CBC-CCC	-5.71	103.09	112.67
3	A	564	SRM	CBA-CAA-C3A	-5.57	100.30	113.40
3	A	564	SRM	CED-CDD-C3D	-5.39	105.47	115.96
3	A	564	SRM	C2B-CDB-CEB	-4.60	108.56	115.29

Continued on next page...

Continued from previous page...

Mol	Chain	Res	Type	Atoms	Z	Observed(°)	Ideal(°)
3	A	564	SRM	CBD-CAD-C2D	4.24	120.30	112.49
3	A	564	SRM	CBB-CAB-C3B	3.84	122.42	113.40
3	A	564	SRM	C4A-NA-C1A	-3.24	104.44	106.28
3	A	564	SRM	CBC-CAC-C3C	3.01	118.03	112.48
3	A	564	SRM	C4D-CHA-C1A	-3.00	124.18	130.12
3	A	564	SRM	C4B-NB-C1B	-2.36	104.94	106.28
3	A	564	SRM	C2A-CDA-CEA	-2.24	112.02	115.29
3	A	564	SRM	CAD-CBD-CCD	-2.23	108.94	112.67
3	A	564	SRM	CHC-C4B-C3B	-2.21	120.52	125.36

There are no chirality outliers.

All (7) torsion outliers are listed below:

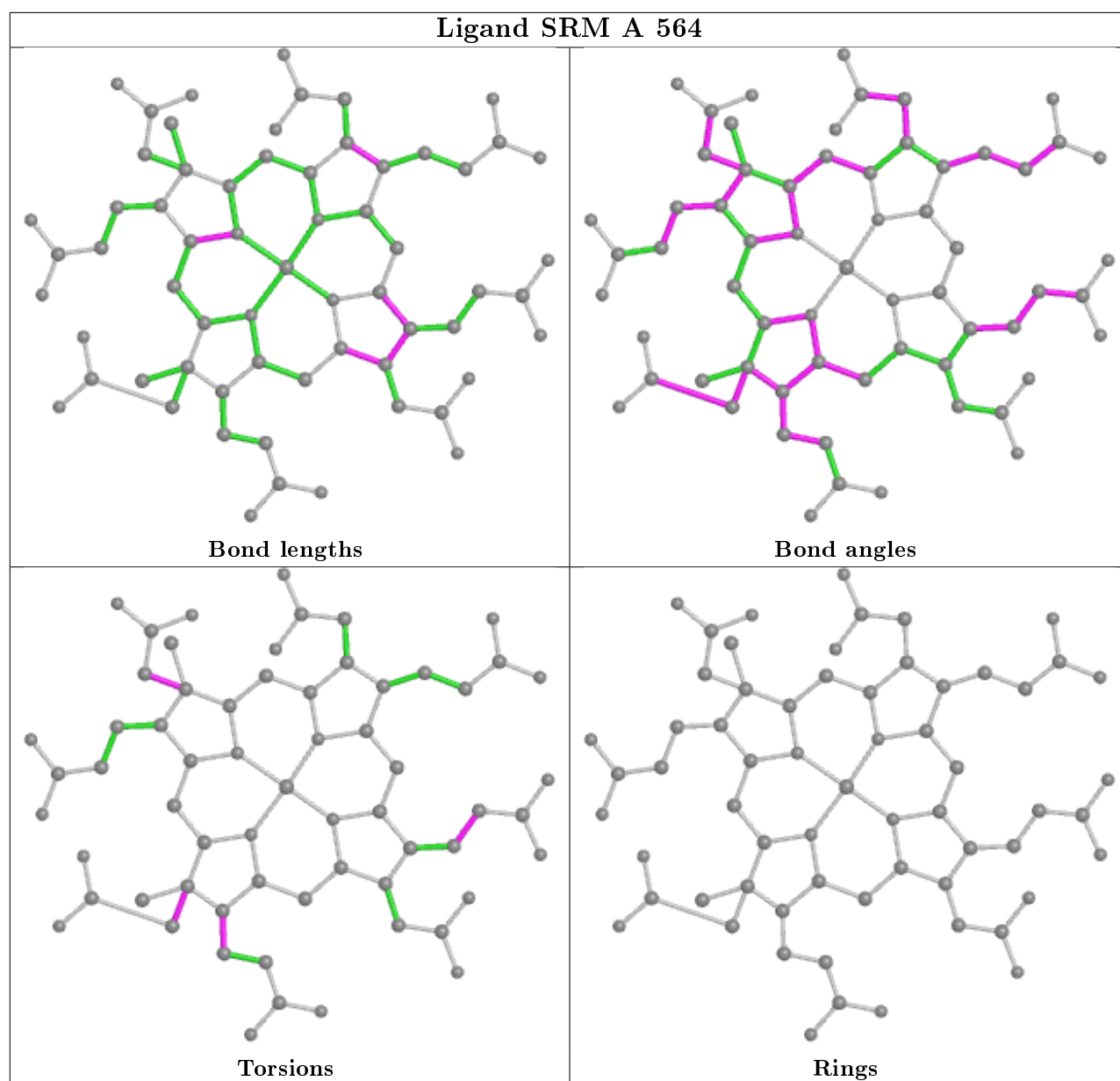
Mol	Chain	Res	Type	Atoms
3	A	564	SRM	CMA-C2A-CDA-CEA
3	A	564	SRM	C3A-C2A-CDA-CEA
3	A	564	SRM	CMB-C2B-CDB-CEB
3	A	564	SRM	C4B-C3B-CAB-CBB
3	A	564	SRM	C3C-CAC-CBC-CCC
3	A	564	SRM	C1A-C2A-CDA-CEA
3	A	564	SRM	C3B-C2B-CDB-CEB

There are no ring outliers.

2 monomers are involved in 11 short contacts:

Mol	Chain	Res	Type	Clashes	Symm-Clashes
2	A	563	SF4	1	0
3	A	564	SRM	10	0

The following is a two-dimensional graphical depiction of Mogul quality analysis of bond lengths, bond angles, torsion angles, and ring geometry for all instances of the Ligand of Interest. In addition, ligands with molecular weight > 250 and outliers as shown on the validation Tables will also be included. For torsion angles, if less than 5% of the Mogul distribution of torsion angles is within 10 degrees of the torsion angle in question, then that torsion angle is considered an outlier. Any bond that is central to one or more torsion angles identified as an outlier by Mogul will be highlighted in the graph. For rings, the root-mean-square deviation (RMSD) between the ring in question and similar rings identified by Mogul is calculated over all ring torsion angles. If the average RMSD is greater than 60 degrees and the minimal RMSD between the ring in question and any Mogul-identified rings is also greater than 60 degrees, then that ring is considered an outlier. The outliers are highlighted in purple. The color gray indicates Mogul did not find sufficient equivalents in the CSD to analyse the geometry.



5.7 Other polymers [i](#)

There are no such residues in this entry.

5.8 Polymer linkage issues [i](#)

There are no chain breaks in this entry.

6 Fit of model and data [i](#)

6.1 Protein, DNA and RNA chains [i](#)

In the following table, the column labelled ‘#RSRZ> 2’ contains the number (and percentage) of RSRZ outliers, followed by percent RSRZ outliers for the chain as percentile scores relative to all X-ray entries and entries of similar resolution. The OWAB column contains the minimum, median, 95th percentile and maximum values of the occupancy-weighted average B-factor per residue. The column labelled ‘Q< 0.9’ lists the number of (and percentage) of residues with an average occupancy less than 0.9.

Mol	Chain	Analysed	<RSRZ>	#RSRZ>2	OWAB(Å ²)	Q<0.9
1	A	535/608 (87%)	-0.40	1 (0%) 95 94	25, 37, 50, 58	0

All (1) RSRZ outliers are listed below:

Mol	Chain	Res	Type	RSRZ
1	A	425	GLU	2.4

6.2 Non-standard residues in protein, DNA, RNA chains [i](#)

There are no non-standard protein/DNA/RNA residues in this entry.

6.3 Carbohydrates [i](#)

There are no carbohydrates in this entry.

6.4 Ligands [i](#)

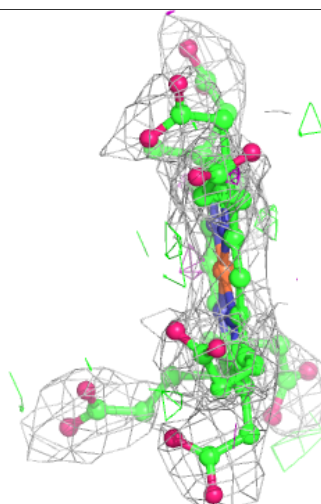
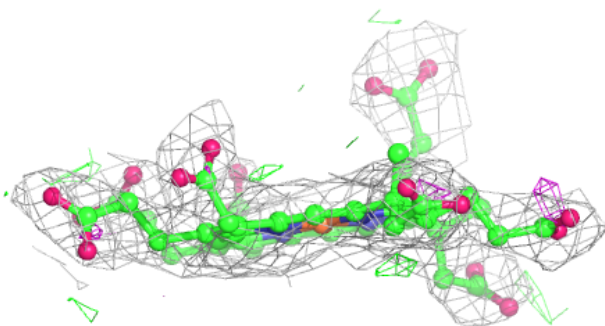
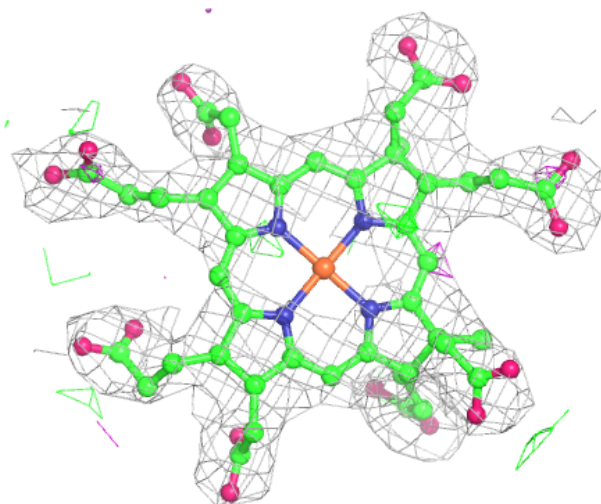
In the following table, the Atoms column lists the number of modelled atoms in the group and the number defined in the chemical component dictionary. The B-factors column lists the minimum, median, 95th percentile and maximum values of B factors of atoms in the group. The column labelled ‘Q< 0.9’ lists the number of atoms with occupancy less than 0.9.

Mol	Type	Chain	Res	Atoms	RSCC	RSR	B-factors(Å ²)	Q<0.9
3	SRM	A	564	63/63	0.94	0.17	27,36,39,42	0
2	SF4	A	563	8/8	0.99	0.05	31,32,32,34	0

The following is a graphical depiction of the model fit to experimental electron density of all instances of the Ligand of Interest. In addition, ligands with molecular weight > 250 and outliers as shown on the geometry validation Tables will also be included. Each fit is shown from different orientation to approximate a three-dimensional view.

Electron density around SRM A 564:

$2mF_o-DF_c$ (at 0.7 rmsd) in gray
 mF_o-DF_c (at 3 rmsd) in purple (negative)
and green (positive)



6.5 Other polymers ⓘ

There are no such residues in this entry.