



# Full wwPDB X-ray Structure Validation Report ⓘ

May 19, 2020 – 03:01 am BST

PDB ID : 2AL4  
Title : CRYSTAL STRUCTURE OF THE GLUR2 LIGAND BINDING CORE (S1S2J) IN COMPLEX WITH quisqualate and CX614.  
Authors : Jin, R.; Clark, S.; Weeks, A.M.; Dudman, J.T.; Gouaux, E.; Partin, K.M.  
Deposited on : 2005-08-04  
Resolution : 1.70 Å(reported)

This is a Full wwPDB X-ray Structure Validation Report for a publicly released PDB entry.

We welcome your comments at [validation@mail.wwpdb.org](mailto:validation@mail.wwpdb.org)

A user guide is available at

<https://www.wwpdb.org/validation/2017/XrayValidationReportHelp>

with specific help available everywhere you see the ⓘ symbol.

---

The following versions of software and data (see [references ⓘ](#)) were used in the production of this report:

MolProbity : 4.02b-467  
Mogul : 1.8.5 (274361), CSD as541be (2020)  
Xtriage (Phenix) : 1.13  
EDS : 2.11  
Percentile statistics : 20191225.v01 (using entries in the PDB archive December 25th 2019)  
Refmac : 5.8.0158  
CCP4 : 7.0.044 (Gargrove)  
Ideal geometry (proteins) : Engh & Huber (2001)  
Ideal geometry (DNA, RNA) : Parkinson et al. (1996)  
Validation Pipeline (wwPDB-VP) : 2.11

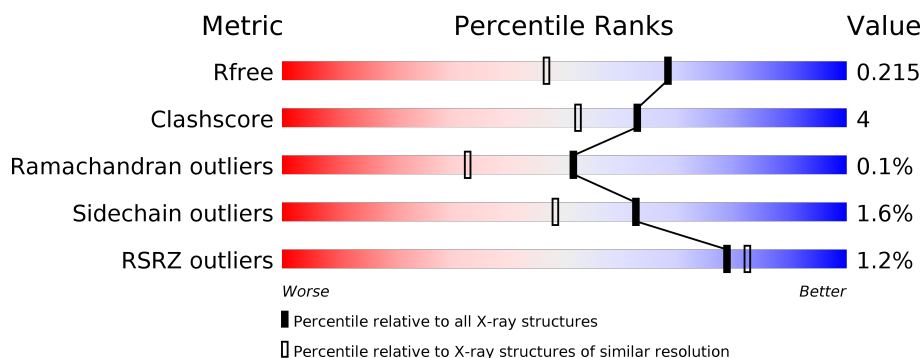
# 1 Overall quality at a glance

The following experimental techniques were used to determine the structure:

*X-RAY DIFFRACTION*

The reported resolution of this entry is 1.70 Å.

Percentile scores (ranging between 0-100) for global validation metrics of the entry are shown in the following graphic. The table shows the number of entries on which the scores are based.



Metric	Whole archive (#Entries)	Similar resolution (#Entries, resolution range(Å))
$R_{free}$	130704	4298 (1.70-1.70)
Clashscore	141614	4695 (1.70-1.70)
Ramachandran outliers	138981	4610 (1.70-1.70)
Sidechain outliers	138945	4610 (1.70-1.70)
RSRZ outliers	127900	4222 (1.70-1.70)

The table below summarises the geometric issues observed across the polymeric chains and their fit to the electron density. The red, orange, yellow and green segments on the lower bar indicate the fraction of residues that contain outliers for  $\geq 3$ , 2, 1 and 0 types of geometric quality criteria respectively. A grey segment represents the fraction of residues that are not modelled. The numeric value for each fraction is indicated below the corresponding segment, with a dot representing fractions  $\leq 5\%$ . The upper red bar (where present) indicates the fraction of residues that have poor fit to the electron density. The numeric value is given above the bar.

Mol	Chain	Length	Quality of chain
1	A	263	<div> <div>2%</div> <div> <div></div> <div>89%</div> <div>9%</div> <div></div> </div> <div></div> </div>
1	B	263	<div> <div>%</div> <div> <div></div> <div>91%</div> <div>7%</div> <div></div> </div> <div></div> </div>
1	C	263	<div> <div>%</div> <div> <div></div> <div>88%</div> <div>10%</div> <div></div> </div> <div></div> </div>
1	D	263	<div> <div>%</div> <div> <div></div> <div>89%</div> <div>9%</div> <div></div> </div> <div></div> </div>
1	E	263	<div> <div>%</div> <div> <div></div> <div>91%</div> <div>7%</div> <div></div> </div> <div></div> </div>
1	F	263	<div> <div>2%</div> <div> <div></div> <div>87%</div> <div>10%</div> <div></div> </div> <div></div> </div>

## 2 Entry composition

There are 5 unique types of molecules in this entry. The entry contains 12722 atoms, of which 0 are hydrogens and 0 are deuteriums.

In the tables below, the ZeroOcc column contains the number of atoms modelled with zero occupancy, the AltConf column contains the number of residues with at least one atom in alternate conformation and the Trace column contains the number of residues modelled with at most 2 atoms.

- Molecule 1 is a protein called Glutamate receptor 2.

Mol	Chain	Residues	Atoms					ZeroOcc	AltConf	Trace
1	A	258	Total	C	N	O	S	0	0	0
			1942	1236	321	371	14			
1	B	259	Total	C	N	O	S	0	0	0
			1992	1267	332	379	14			
1	C	258	Total	C	N	O	S	0	0	0
			1941	1237	324	367	13			
1	D	258	Total	C	N	O	S	0	0	0
			1942	1236	321	371	14			
1	E	259	Total	C	N	O	S	0	0	0
			1992	1267	332	379	14			
1	F	258	Total	C	N	O	S	0	0	0
			1941	1237	324	367	13			

There are 24 discrepancies between the modelled and reference sequences:

Chain	Residue	Modelled	Actual	Comment	Reference
A	1	GLY	-	CLONING ARTIFACT	UNP P19491
A	2	ALA	-	CLONING ARTIFACT	UNP P19491
A	118	GLY	-	SEE REMARK 999	UNP P19491
A	119	THR	-	SEE REMARK 999	UNP P19491
B	1	GLY	-	CLONING ARTIFACT	UNP P19491
B	2	ALA	-	CLONING ARTIFACT	UNP P19491
B	118	GLY	-	SEE REMARK 999	UNP P19491
B	119	THR	-	SEE REMARK 999	UNP P19491
C	1	GLY	-	CLONING ARTIFACT	UNP P19491
C	2	ALA	-	CLONING ARTIFACT	UNP P19491
C	118	GLY	-	SEE REMARK 999	UNP P19491
C	119	THR	-	SEE REMARK 999	UNP P19491
D	1	GLY	-	CLONING ARTIFACT	UNP P19491
D	2	ALA	-	CLONING ARTIFACT	UNP P19491
D	118	GLY	-	SEE REMARK 999	UNP P19491
D	119	THR	-	SEE REMARK 999	UNP P19491
E	1	GLY	-	CLONING ARTIFACT	UNP P19491

*Continued on next page...*

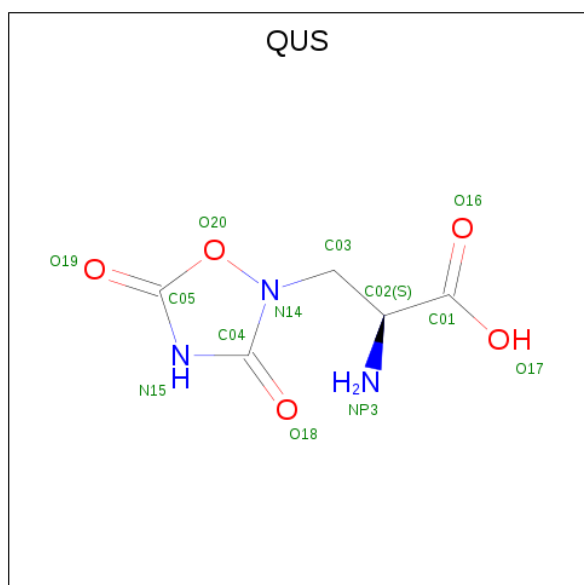
Continued from previous page...

Chain	Residue	Modelled	Actual	Comment	Reference
E	2	ALA	-	CLONING ARTIFACT	UNP P19491
E	118	GLY	-	SEE REMARK 999	UNP P19491
E	119	THR	-	SEE REMARK 999	UNP P19491
F	1	GLY	-	CLONING ARTIFACT	UNP P19491
F	2	ALA	-	CLONING ARTIFACT	UNP P19491
F	118	GLY	-	SEE REMARK 999	UNP P19491
F	119	THR	-	SEE REMARK 999	UNP P19491

- Molecule 2 is ZINC ION (three-letter code: ZN) (formula: Zn).

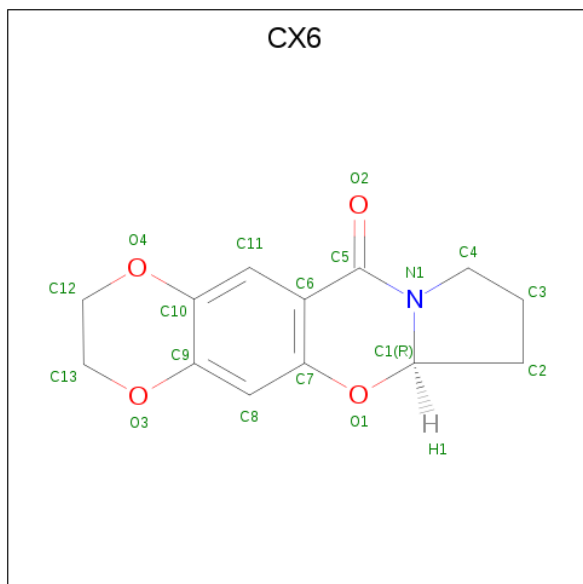
Mol	Chain	Residues	Atoms	ZeroOcc	AltConf
2	D	1	Total Zn 1 1	0	0
2	E	2	Total Zn 2 2	0	0
2	B	2	Total Zn 2 2	0	0
2	C	2	Total Zn 2 2	0	0
2	A	1	Total Zn 1 1	0	0
2	F	2	Total Zn 2 2	0	0

- Molecule 3 is (S)-2-AMINO-3-(3,5-DIOXO-[1,2,4]OXADIAZOLIDIN-2-YL)-PROPIONIC ACID (three-letter code: QUS) (formula: C<sub>5</sub>H<sub>7</sub>N<sub>3</sub>O<sub>5</sub>).



Mol	Chain	Residues	Atoms				ZeroOcc	AltConf
3	A	1	Total	C	N	O	0	0
			13	5	3	5		
3	B	1	Total	C	N	O	0	0
			13	5	3	5		
3	C	1	Total	C	N	O	0	0
			13	5	3	5		
3	D	1	Total	C	N	O	0	0
			13	5	3	5		
3	E	1	Total	C	N	O	0	0
			13	5	3	5		
3	F	1	Total	C	N	O	0	0
			13	5	3	5		

- Molecule 4 is 2,3,6A,7,8,9-HEXAHYDRO-11H-[1,4]DIOXINO[2,3-G]PYRROLO[2,1-B][1,3]BENZOXAZIN-11-ONE (three-letter code: CX6) (formula: C<sub>13</sub>H<sub>13</sub>NO<sub>4</sub>).



Mol	Chain	Residues	Atoms				ZeroOcc	AltConf
4	C	1	Total	C	N	O	0	1
			36	26	2	8		
4	E	1	Total	C	N	O	0	1
			36	26	2	8		
4	F	1	Total	C	N	O	0	1
			36	26	2	8		

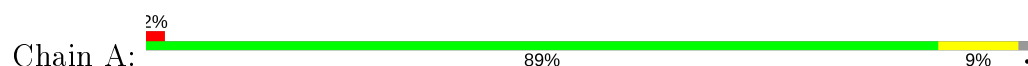
- Molecule 5 is water.

Mol	Chain	Residues	Atoms		ZeroOcc	AltConf
5	A	131	Total 131	O 131	0	0
5	B	146	Total 146	O 146	0	0
5	C	110	Total 110	O 110	0	0
5	D	131	Total 131	O 131	0	0
5	E	148	Total 148	O 148	0	0
5	F	110	Total 110	O 110	0	0

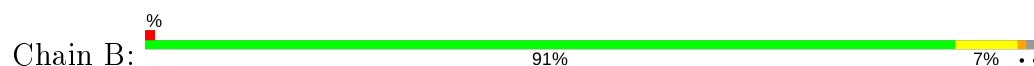
### 3 Residue-property plots [i](#)

These plots are drawn for all protein, RNA and DNA chains in the entry. The first graphic for a chain summarises the proportions of the various outlier classes displayed in the second graphic. The second graphic shows the sequence view annotated by issues in geometry and electron density. Residues are color-coded according to the number of geometric quality criteria for which they contain at least one outlier: green = 0, yellow = 1, orange = 2 and red = 3 or more. A red dot above a residue indicates a poor fit to the electron density ( $RSRZ > 2$ ). Stretches of 2 or more consecutive residues without any outlier are shown as a green connector. Residues present in the sample, but not in the model, are shown in grey.

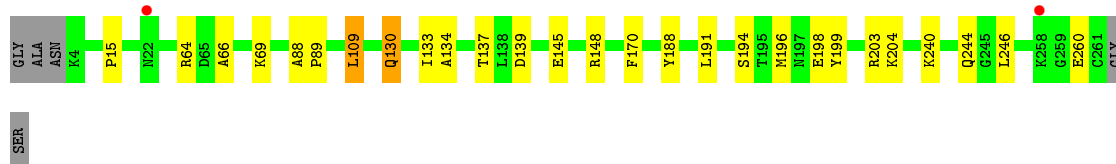
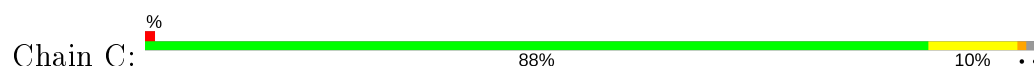
- Molecule 1: Glutamate receptor 2



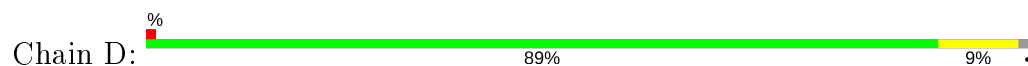
- Molecule 1: Glutamate receptor 2



- Molecule 1: Glutamate receptor 2



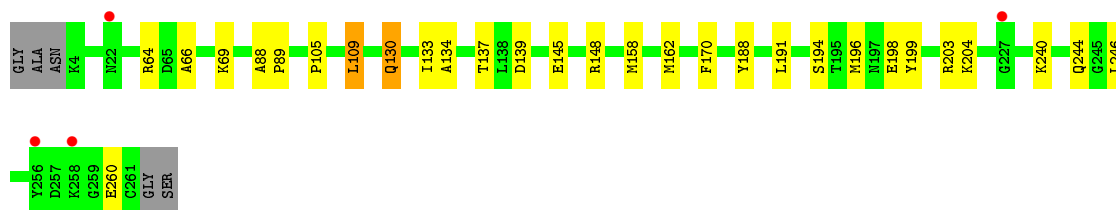
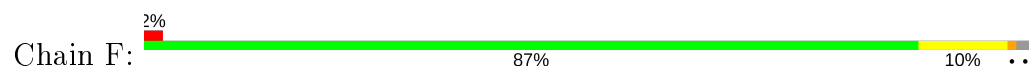
- Molecule 1: Glutamate receptor 2



- Molecule 1: Glutamate receptor 2



## ● Molecule 1: Glutamate receptor 2





## 4 Data and refinement statistics

Property	Value	Source
Space group	P 1 21 1	Depositor
Cell constants a, b, c, $\alpha$ , $\beta$ , $\gamma$	114.34Å 163.72Å 47.31Å 90.00° 90.03° 90.00°	Depositor
Resolution (Å)	29.88 – 1.70 29.88 – 1.70	Depositor EDS
% Data completeness (in resolution range)	80.7 (29.88-1.70) 80.5 (29.88-1.70)	Depositor EDS
$R_{merge}$	(Not available)	Depositor
$R_{sym}$	(Not available)	Depositor
$\langle I/\sigma(I) \rangle$ <sup>1</sup>	3.34 (at 1.70Å)	Xtriage
Refinement program	CNS 1.1	Depositor
R, $R_{free}$	0.209 , 0.223 0.201 , 0.215	Depositor DCC
$R_{free}$ test set	15343 reflections (9.94%)	wwPDB-VP
Wilson B-factor (Å <sup>2</sup> )	16.2	Xtriage
Anisotropy	0.265	Xtriage
Bulk solvent $k_{sol}$ (e/Å <sup>3</sup> ), $B_{sol}$ (Å <sup>2</sup> )	0.38 , 30.4	EDS
L-test for twinning <sup>2</sup>	$\langle  L  \rangle = 0.50$ , $\langle L^2 \rangle = 0.33$	Xtriage
Estimated twinning fraction	0.449 for -h,-k,l	Xtriage
$F_o, F_c$ correlation	0.94	EDS
Total number of atoms	12722	wwPDB-VP
Average B, all atoms (Å <sup>2</sup> )	19.0	wwPDB-VP

Xtriage's analysis on translational NCS is as follows: *The largest off-origin peak in the Patterson function is 11.25% of the height of the origin peak. No significant pseudotranslation is detected.*

<sup>1</sup>Intensities estimated from amplitudes.

<sup>2</sup>Theoretical values of  $\langle |L| \rangle$ ,  $\langle L^2 \rangle$  for acentric reflections are 0.5, 0.333 respectively for untwinned datasets, and 0.375, 0.2 for perfectly twinned datasets.

## 5 Model quality [i](#)

### 5.1 Standard geometry [i](#)

Bond lengths and bond angles in the following residue types are not validated in this section: ZN, QUS, CX6

The Z score for a bond length (or angle) is the number of standard deviations the observed value is removed from the expected value. A bond length (or angle) with  $|Z| > 5$  is considered an outlier worth inspection. RMSZ is the root-mean-square of all Z scores of the bond lengths (or angles).

Mol	Chain	Bond lengths		Bond angles	
		RMSZ	# Z  >5	RMSZ	# Z  >5
1	A	0.31	0/1978	0.56	0/2672
1	B	0.31	0/2028	0.57	0/2732
1	C	0.29	0/1977	0.55	0/2667
1	D	0.31	0/1978	0.56	0/2672
1	E	0.30	0/2028	0.57	0/2732
1	F	0.29	0/1977	0.55	0/2667
All	All	0.30	0/11966	0.56	0/16142

There are no bond length outliers.

There are no bond angle outliers.

There are no chirality outliers.

There are no planarity outliers.

### 5.2 Too-close contacts [i](#)

In the following table, the Non-H and H(model) columns list the number of non-hydrogen atoms and hydrogen atoms in the chain respectively. The H(added) column lists the number of hydrogen atoms added and optimized by MolProbity. The Clashes column lists the number of clashes within the asymmetric unit, whereas Symm-Clashes lists symmetry related clashes.

Mol	Chain	Non-H	H(model)	H(added)	Clashes	Symm-Clashes
1	A	1942	0	1892	14	0
1	B	1992	0	1987	13	0
1	C	1941	0	1911	21	0
1	D	1942	0	1892	17	0
1	E	1992	0	1987	13	0
1	F	1941	0	1911	23	0
2	A	1	0	0	0	0

*Continued on next page...*

*Continued from previous page...*

Mol	Chain	Non-H	H(model)	H(added)	Clashes	Symm-Clashes
2	B	2	0	0	0	0
2	C	2	0	0	0	0
2	D	1	0	0	0	0
2	E	2	0	0	0	0
2	F	2	0	0	0	0
3	A	13	0	6	0	0
3	B	13	0	6	0	0
3	C	13	0	6	0	0
3	D	13	0	6	0	0
3	E	13	0	6	0	0
3	F	13	0	6	0	0
4	C	36	0	26	1	0
4	E	36	0	26	2	0
4	F	36	0	26	2	0
5	A	131	0	0	3	0
5	B	146	0	0	0	0
5	C	110	0	0	0	0
5	D	131	0	0	2	0
5	E	148	0	0	0	0
5	F	110	0	0	1	0
All	All	12722	0	11694	101	0

The all-atom clashscore is defined as the number of clashes found per 1000 atoms (including hydrogen atoms). The all-atom clashscore for this structure is 4.

All (101) close contacts within the same asymmetric unit are listed below, sorted by their clash magnitude.

Atom-1	Atom-2	Interatomic distance (Å)	Clash overlap (Å)
1:E:130:GLN:HE22	1:E:133:ILE:H	1.05	0.99
1:B:130:GLN:HE22	1:B:133:ILE:H	1.04	0.95
1:C:130:GLN:HE22	1:C:133:ILE:H	1.12	0.95
1:F:130:GLN:HE22	1:F:133:ILE:H	1.12	0.94
1:C:199:TYR:CZ	1:C:203:ARG:HD2	2.10	0.86
1:F:199:TYR:CZ	1:F:203:ARG:HD2	2.10	0.86
1:B:252:ASN:HA	1:B:256:TYR:HD2	1.50	0.76
1:E:252:ASN:HA	1:E:256:TYR:HD2	1.50	0.75
1:F:194:SER:O	1:F:198:GLU:HG2	1.87	0.74
1:C:194:SER:O	1:C:198:GLU:HG2	1.88	0.73
1:F:130:GLN:HE22	1:F:133:ILE:N	1.89	0.69
1:B:252:ASN:HA	1:B:256:TYR:CD2	2.27	0.69
1:C:130:GLN:NE2	1:C:133:ILE:H	1.88	0.69

*Continued on next page...*

*Continued from previous page...*

Atom-1	Atom-2	Interatomic distance (Å)	Clash overlap (Å)
1:F:130:GLN:NE2	1:F:133:ILE:H	1.88	0.69
1:E:252:ASN:HA	1:E:256:TYR:CD2	2.27	0.68
1:C:88:ALA:HB1	1:C:89:PRO:HD2	1.77	0.66
1:C:130:GLN:HE22	1:C:133:ILE:N	1.90	0.65
1:F:88:ALA:HB1	1:F:89:PRO:HD2	1.77	0.65
1:D:81:GLY:HA2	5:D:720:HOH:O	1.97	0.64
1:C:145:GLU:CD	1:C:148:ARG:HH21	2.00	0.64
1:D:42:GLU:HG3	1:D:246:LEU:HD21	1.79	0.63
1:A:42:GLU:HG3	1:A:246:LEU:HD21	1.80	0.63
1:B:130:GLN:NE2	1:B:133:ILE:H	1.87	0.63
1:F:145:GLU:CD	1:F:148:ARG:HH21	2.01	0.62
1:E:130:GLN:HE22	1:E:133:ILE:N	1.89	0.62
1:A:81:GLY:HA2	5:A:936:HOH:O	1.98	0.62
1:B:130:GLN:HE22	1:B:133:ILE:N	1.88	0.62
1:B:88:ALA:HB1	1:B:89:PRO:HD2	1.82	0.61
1:C:64:ARG:HH11	1:C:64:ARG:HG2	1.66	0.61
1:E:88:ALA:HB1	1:E:89:PRO:HD2	1.83	0.60
1:F:64:ARG:HH11	1:F:64:ARG:HG2	1.67	0.59
1:A:88:ALA:HB1	1:A:89:PRO:HD2	1.84	0.59
1:F:240:LYS:O	1:F:244:GLN:HG3	2.03	0.58
1:D:88:ALA:HB1	1:D:89:PRO:HD2	1.84	0.58
1:C:240:LYS:O	1:C:244:GLN:HG3	2.04	0.58
1:E:130:GLN:NE2	1:E:133:ILE:H	1.88	0.56
1:C:64:ARG:NH1	1:C:69:LYS:HD3	2.23	0.54
1:F:64:ARG:NH1	1:F:69:LYS:HD3	2.23	0.53
1:F:139:ASP:OD2	1:F:170:PHE:HB3	2.09	0.52
1:B:23:HIS:CD2	1:B:26:LEU:HD12	2.45	0.52
1:E:23:HIS:CD2	1:E:26:LEU:HD12	2.45	0.51
1:A:184:SER:HB2	5:A:916:HOH:O	2.11	0.51
1:C:139:ASP:OD2	1:C:170:PHE:HB3	2.09	0.51
1:A:204:LYS:HB2	1:A:204:LYS:NZ	2.27	0.49
1:D:215:LEU:N	1:D:215:LEU:HD12	2.28	0.49
1:D:184:SER:HB2	5:D:664:HOH:O	2.13	0.49
1:D:204:LYS:HB2	1:D:204:LYS:NZ	2.27	0.49
1:A:41:ALA:O	1:A:45:LYS:HG3	2.13	0.48
1:A:215:LEU:HD12	1:A:215:LEU:N	2.29	0.48
1:D:41:ALA:O	1:D:45:LYS:HG3	2.13	0.48
1:F:204:LYS:HG3	1:F:260:GLU:HB3	1.96	0.47
1:A:105:PRO:O	4:C:801[A]:CX6:H32	2.15	0.47
1:C:204:LYS:HG3	1:C:260:GLU:HB3	1.96	0.46
1:C:64:ARG:NH1	1:C:64:ARG:HG2	2.30	0.46

*Continued on next page...*

*Continued from previous page...*

Atom-1	Atom-2	Interatomic distance (Å)	Clash overlap (Å)
1:A:240:LYS:O	1:A:244:GLN:HG2	2.16	0.46
1:F:64:ARG:NH1	1:F:64:ARG:HG2	2.31	0.46
1:B:100:ILE:HD12	1:B:223:ALA:HB1	1.99	0.44
1:D:240:LYS:O	1:D:244:GLN:HG2	2.16	0.44
1:E:100:ILE:HD12	1:E:223:ALA:HB1	1.99	0.44
1:F:64:ARG:HH12	1:F:66:ALA:HA	1.82	0.44
1:C:134:ALA:O	1:C:188:TYR:HA	2.18	0.44
1:C:64:ARG:HH12	1:C:66:ALA:HA	1.82	0.44
1:E:137:THR:HG22	1:E:191:LEU:HB2	1.99	0.44
1:E:68:THR:O	1:E:69:LYS:HB2	2.18	0.44
1:B:105:PRO:O	4:E:802[A]:CX6:H32	2.16	0.44
1:C:137:THR:HG22	1:C:191:LEU:HB2	2.00	0.43
1:D:105:PRO:O	4:F:803[A]:CX6:H32	2.17	0.43
1:F:134:ALA:O	1:F:188:TYR:HA	2.18	0.43
1:B:68:THR:O	1:B:69:LYS:HB2	2.18	0.43
1:D:237:ALA:O	1:D:241:LEU:HG	2.19	0.43
1:B:137:THR:HG22	1:B:191:LEU:HB2	1.99	0.43
1:C:109:LEU:HD22	1:C:109:LEU:C	2.40	0.43
1:D:204:LYS:HB2	1:D:204:LYS:HZ2	1.84	0.43
1:F:64:ARG:HH11	1:F:69:LYS:HA	1.84	0.43
1:F:145:GLU:HG2	5:F:591:HOH:O	2.19	0.42
1:F:137:THR:HG22	1:F:191:LEU:HB2	2.00	0.42
1:C:64:ARG:HH11	1:C:69:LYS:HA	1.84	0.42
1:E:109:LEU:C	1:E:109:LEU:HD22	2.39	0.42
1:B:109:LEU:C	1:B:109:LEU:HD22	2.40	0.42
1:C:246:LEU:C	1:C:246:LEU:HD13	2.40	0.42
1:D:241:LEU:HD22	1:D:246:LEU:HD23	2.01	0.42
1:E:105:PRO:O	4:E:802[B]:CX6:H32	2.19	0.41
1:F:109:LEU:HD22	1:F:109:LEU:C	2.40	0.41
1:A:237:ALA:O	1:A:241:LEU:HG	2.19	0.41
1:A:241:LEU:HD22	1:A:246:LEU:HD23	2.01	0.41
1:D:109:LEU:C	1:D:109:LEU:HD22	2.41	0.41
1:E:132:GLU:OE1	1:E:187:LYS:NZ	2.54	0.41
1:D:136:GLY:HA3	1:D:169:VAL:O	2.21	0.41
1:D:137:THR:HG22	1:D:191:LEU:HB2	2.03	0.41
1:F:199:TYR:CE2	1:F:203:ARG:HD2	2.53	0.41
1:F:105:PRO:O	4:F:803[B]:CX6:H32	2.21	0.41
1:B:132:GLU:OE1	1:B:187:LYS:NZ	2.54	0.41
1:C:203:ARG:HH11	1:C:203:ARG:HG2	1.86	0.41
1:F:246:LEU:HD13	1:F:246:LEU:C	2.41	0.41
1:A:154:VAL:HG23	5:A:911:HOH:O	2.20	0.41

*Continued on next page...*

Continued from previous page...

Atom-1	Atom-2	Interatomic distance (Å)	Clash overlap (Å)
1:C:199:TYR:CE2	1:C:203:ARG:HD2	2.53	0.41
1:D:204:LYS:HG3	1:D:260:GLU:HB3	2.03	0.41
1:A:136:GLY:HA3	1:A:169:VAL:O	2.21	0.40
1:F:158:MET:O	1:F:162:MET:HG3	2.21	0.40
1:A:204:LYS:HG3	1:A:260:GLU:HB3	2.02	0.40
1:D:105:PRO:HA	1:D:220:TYR:O	2.22	0.40

There are no symmetry-related clashes.

## 5.3 Torsion angles [i](#)

### 5.3.1 Protein backbone [i](#)

In the following table, the Percentiles column shows the percent Ramachandran outliers of the chain as a percentile score with respect to all X-ray entries followed by that with respect to entries of similar resolution.

The Analysed column shows the number of residues for which the backbone conformation was analysed, and the total number of residues.

Mol	Chain	Analysed	Favoured	Allowed	Outliers	Percentiles	
1	A	256/263 (97%)	251 (98%)	4 (2%)	1 (0%)	34	18
1	B	257/263 (98%)	249 (97%)	8 (3%)	0	100	100
1	C	256/263 (97%)	250 (98%)	6 (2%)	0	100	100
1	D	256/263 (97%)	250 (98%)	5 (2%)	1 (0%)	34	18
1	E	257/263 (98%)	249 (97%)	8 (3%)	0	100	100
1	F	256/263 (97%)	249 (97%)	7 (3%)	0	100	100
All	All	1538/1578 (98%)	1498 (97%)	38 (2%)	2 (0%)	51	33

All (2) Ramachandran outliers are listed below:

Mol	Chain	Res	Type
1	A	67	ASP
1	D	67	ASP

### 5.3.2 Protein sidechains ⓘ

In the following table, the Percentiles column shows the percent sidechain outliers of the chain as a percentile score with respect to all X-ray entries followed by that with respect to entries of similar resolution.

The Analysed column shows the number of residues for which the sidechain conformation was analysed, and the total number of residues.

Mol	Chain	Analysed	Rotameric	Outliers	Percentiles	
1	A	199/219 (91%)	196 (98%)	3 (2%)	65	51
1	B	210/219 (96%)	206 (98%)	4 (2%)	57	41
1	C	200/219 (91%)	196 (98%)	4 (2%)	55	38
1	D	199/219 (91%)	197 (99%)	2 (1%)	76	67
1	E	210/219 (96%)	206 (98%)	4 (2%)	57	41
1	F	200/219 (91%)	197 (98%)	3 (2%)	65	51
All	All	1218/1314 (93%)	1198 (98%)	20 (2%)	62	48

All (20) residues with a non-rotameric sidechain are listed below:

Mol	Chain	Res	Type
1	A	15	PRO
1	A	109	LEU
1	A	196	MET
1	B	109	LEU
1	B	130	GLN
1	B	196	MET
1	B	242	ASN
1	C	15	PRO
1	C	109	LEU
1	C	130	GLN
1	C	196	MET
1	D	109	LEU
1	D	196	MET
1	E	109	LEU
1	E	130	GLN
1	E	196	MET
1	E	242	ASN
1	F	109	LEU
1	F	130	GLN
1	F	196	MET

Some sidechains can be flipped to improve hydrogen bonding and reduce clashes. All (6) such

sidechains are listed below:

Mol	Chain	Res	Type
1	B	130	GLN
1	B	242	ASN
1	C	130	GLN
1	E	130	GLN
1	E	242	ASN
1	F	130	GLN

### 5.3.3 RNA ⓘ

There are no RNA molecules in this entry.

## 5.4 Non-standard residues in protein, DNA, RNA chains ⓘ

There are no non-standard protein/DNA/RNA residues in this entry.

## 5.5 Carbohydrates ⓘ

There are no carbohydrates in this entry.

## 5.6 Ligand geometry ⓘ

Of 22 ligands modelled in this entry, 10 are monoatomic - leaving 12 for Mogul analysis.

In the following table, the Counts columns list the number of bonds (or angles) for which Mogul statistics could be retrieved, the number of bonds (or angles) that are observed in the model and the number of bonds (or angles) that are defined in the Chemical Component Dictionary. The Link column lists molecule types, if any, to which the group is linked. The Z score for a bond length (or angle) is the number of standard deviations the observed value is removed from the expected value. A bond length (or angle) with  $|Z| > 2$  is considered an outlier worth inspection. RMSZ is the root-mean-square of all Z scores of the bond lengths (or angles).

Mol	Type	Chain	Res	Link	Bond lengths			Bond angles		
					Counts	RMSZ	$\# Z  > 2$	Counts	RMSZ	$\# Z  > 2$
3	QUS	B	808	-	4,13,13	1.39	0	0,18,18	0.00	-
3	QUS	D	810	-	4,13,13	1.49	1 (25%)	0,18,18	0.00	-
4	CX6	F	803[A]	-	21,21,21	1.21	1 (4%)	26,31,31	1.29	4 (15%)
3	QUS	C	809	-	4,13,13	1.37	0	0,18,18	0.00	-
4	CX6	E	802[A]	-	21,21,21	1.21	1 (4%)	26,31,31	1.29	4 (15%)
4	CX6	C	801[B]	-	21,21,21	1.26	1 (4%)	26,31,31	1.23	4 (15%)



Mol	Type	Chain	Res	Link	Bond lengths			Bond angles		
					Counts	RMSZ	# Z  > 2	Counts	RMSZ	# Z  > 2
3	QUS	F	812	-	4,13,13	1.65	2 (50%)	0,18,18	0.00	-
4	CX6	E	802[B]	-	21,21,21	1.27	1 (4%)	26,31,31	1.25	4 (15%)
4	CX6	C	801[A]	-	21,21,21	1.23	1 (4%)	26,31,31	1.28	4 (15%)
3	QUS	E	811	-	4,13,13	1.41	1 (25%)	0,18,18	0.00	-
4	CX6	F	803[B]	-	21,21,21	1.29	1 (4%)	26,31,31	1.23	4 (15%)
3	QUS	A	807	-	4,13,13	1.70	1 (25%)	0,18,18	0.00	-

In the following table, the Chirals column lists the number of chiral outliers, the number of chiral centers analysed, the number of these observed in the model and the number defined in the Chemical Component Dictionary. Similar counts are reported in the Torsion and Rings columns. '-' means no outliers of that kind were identified.

Mol	Type	Chain	Res	Link	Chirals	Torsions	Rings
3	QUS	B	808	-	-	2/2/8/8	0/1/1/1
3	QUS	D	810	-	-	2/2/8/8	0/1/1/1
4	CX6	F	803[A]	-	-	-	0/4/4/4
3	QUS	C	809	-	-	2/2/8/8	0/1/1/1
4	CX6	E	802[A]	-	-	-	0/4/4/4
4	CX6	C	801[B]	-	-	-	0/4/4/4
3	QUS	F	812	-	-	2/2/8/8	0/1/1/1
4	CX6	E	802[B]	-	-	-	0/4/4/4
4	CX6	C	801[A]	-	-	-	0/4/4/4
3	QUS	E	811	-	-	2/2/8/8	0/1/1/1
4	CX6	F	803[B]	-	-	-	0/4/4/4
3	QUS	A	807	-	-	2/2/8/8	0/1/1/1

All (11) bond length outliers are listed below:

Mol	Chain	Res	Type	Atoms	Z	Observed(Å)	Ideal(Å)
4	F	803[B]	CX6	O3-C9	2.99	1.40	1.37
4	E	802[B]	CX6	O3-C9	2.91	1.40	1.37
4	C	801[A]	CX6	O3-C9	2.88	1.40	1.37
4	C	801[B]	CX6	O3-C9	2.88	1.40	1.37
4	E	802[A]	CX6	O3-C9	2.76	1.40	1.37
4	F	803[A]	CX6	O3-C9	2.72	1.40	1.37
3	A	807	QUS	O19-C05	2.60	1.22	1.19
3	F	812	QUS	O19-C05	2.23	1.22	1.19
3	D	810	QUS	O19-C05	2.14	1.22	1.19
3	E	811	QUS	O19-C05	2.13	1.22	1.19
3	F	812	QUS	C04-N15	2.06	1.36	1.34

All (24) bond angle outliers are listed below:

Mol	Chain	Res	Type	Atoms	Z	Observed(°)	Ideal(°)
4	C	801[A]	CX6	C11-C6-C5	2.38	122.97	118.37
4	F	803[A]	CX6	C7-O1-C1	-2.33	110.21	114.99
4	F	803[A]	CX6	C11-C6-C5	2.31	122.83	118.37
4	C	801[A]	CX6	C7-C6-C5	-2.29	117.78	122.92
4	F	803[A]	CX6	C6-C5-N1	-2.29	113.93	116.24
4	C	801[A]	CX6	C7-O1-C1	-2.29	110.30	114.99
4	E	802[A]	CX6	C7-O1-C1	-2.28	110.32	114.99
4	E	802[B]	CX6	C11-C6-C5	2.26	122.75	118.37
4	F	803[B]	CX6	C11-C6-C5	2.26	122.74	118.37
4	C	801[B]	CX6	C11-C6-C5	2.26	122.73	118.37
4	F	803[A]	CX6	C7-C6-C5	-2.24	117.89	122.92
4	E	802[A]	CX6	C7-C6-C5	-2.23	117.92	122.92
4	E	802[B]	CX6	C7-O1-C1	-2.23	110.43	114.99
4	C	801[A]	CX6	C6-C5-N1	-2.21	114.01	116.24
4	E	802[A]	CX6	C11-C6-C5	2.20	122.62	118.37
4	C	801[B]	CX6	C6-C5-N1	-2.17	114.06	116.24
4	F	803[B]	CX6	C7-O1-C1	-2.16	110.56	114.99
4	C	801[B]	CX6	C7-O1-C1	-2.15	110.59	114.99
4	E	802[B]	CX6	C7-C6-C5	-2.14	118.13	122.92
4	F	803[B]	CX6	C6-C5-N1	-2.13	114.09	116.24
4	F	803[B]	CX6	C7-C6-C5	-2.13	118.15	122.92
4	C	801[B]	CX6	C7-C6-C5	-2.12	118.17	122.92
4	E	802[B]	CX6	C6-C5-N1	-2.11	114.11	116.24
4	E	802[A]	CX6	C6-C5-N1	-2.08	114.14	116.24

There are no chirality outliers.

All (12) torsion outliers are listed below:

Mol	Chain	Res	Type	Atoms
3	B	808	QUS	C01-C02-C03-N14
3	A	807	QUS	C01-C02-C03-N14
3	E	811	QUS	C01-C02-C03-N14
3	D	810	QUS	C01-C02-C03-N14
3	C	809	QUS	C01-C02-C03-N14
3	F	812	QUS	C01-C02-C03-N14
3	B	808	QUS	NP3-C02-C03-N14
3	C	809	QUS	NP3-C02-C03-N14
3	A	807	QUS	NP3-C02-C03-N14
3	F	812	QUS	NP3-C02-C03-N14
3	E	811	QUS	NP3-C02-C03-N14
3	D	810	QUS	NP3-C02-C03-N14

There are no ring outliers.

5 monomers are involved in 5 short contacts:

Mol	Chain	Res	Type	Clashes	Symm-Clashes
4	F	803[A]	CX6	1	0
4	E	802[A]	CX6	1	0
4	E	802[B]	CX6	1	0
4	C	801[A]	CX6	1	0
4	F	803[B]	CX6	1	0

## 5.7 Other polymers [i](#)

There are no such residues in this entry.

## 5.8 Polymer linkage issues [i](#)

There are no chain breaks in this entry.

## 6 Fit of model and data

### 6.1 Protein, DNA and RNA chains

In the following table, the column labelled ‘#RSRZ> 2’ contains the number (and percentage) of RSRZ outliers, followed by percent RSRZ outliers for the chain as percentile scores relative to all X-ray entries and entries of similar resolution. The OWAB column contains the minimum, median, 95<sup>th</sup> percentile and maximum values of the occupancy-weighted average B-factor per residue. The column labelled ‘Q< 0.9’ lists the number of (and percentage) of residues with an average occupancy less than 0.9.

Mol	Chain	Analysed	<RSRZ>	#RSRZ>2	OWAB(Å <sup>2</sup> )	Q<0.9
1	A	258/263 (98%)	-0.19	4 (1%) 72 76	10, 17, 28, 39	0
1	B	259/263 (98%)	-0.17	3 (1%) 79 82	10, 16, 30, 39	0
1	C	258/263 (98%)	-0.08	2 (0%) 86 88	11, 19, 35, 40	0
1	D	258/263 (98%)	-0.22	3 (1%) 79 82	11, 18, 29, 39	0
1	E	259/263 (98%)	-0.19	3 (1%) 79 82	10, 16, 30, 39	0
1	F	258/263 (98%)	-0.06	4 (1%) 72 76	12, 20, 35, 41	0
All	All	1550/1578 (98%)	-0.15	19 (1%) 79 82	10, 17, 31, 41	0

All (19) RSRZ outliers are listed below:

Mol	Chain	Res	Type	RSRZ
1	E	256	TYR	3.8
1	F	258	LYS	3.7
1	B	256	TYR	3.6
1	D	139	ASP	3.3
1	D	140	SER	3.2
1	A	139	ASP	2.9
1	A	140	SER	2.8
1	A	66	ALA	2.7
1	F	256	TYR	2.6
1	F	227	GLY	2.6
1	D	66	ALA	2.5
1	C	22	ASN	2.4
1	F	22	ASN	2.4
1	C	258	LYS	2.3
1	E	66	ALA	2.3
1	A	67	ASP	2.2
1	B	139	ASP	2.2
1	B	66	ALA	2.0
1	E	227	GLY	2.0

## 6.2 Non-standard residues in protein, DNA, RNA chains [i](#)

There are no non-standard protein/DNA/RNA residues in this entry.

## 6.3 Carbohydrates [i](#)

There are no carbohydrates in this entry.

## 6.4 Ligands [i](#)

In the following table, the Atoms column lists the number of modelled atoms in the group and the number defined in the chemical component dictionary. The B-factors column lists the minimum, median, 95<sup>th</sup> percentile and maximum values of B factors of atoms in the group. The column labelled 'Q< 0.9' lists the number of atoms with occupancy less than 0.9.

Mol	Type	Chain	Res	Atoms	RSCC	RSR	B-factors(Å <sup>2</sup> )	Q<0.9
4	CX6	E	802[A]	18/18	0.94	0.12	9,10,13,13	18
4	CX6	E	802[B]	18/18	0.94	0.12	5,9,10,10	18
3	QUS	F	812	13/13	0.95	0.07	12,14,18,19	0
4	CX6	F	803[A]	18/18	0.95	0.13	14,16,19,19	18
4	CX6	C	801[B]	18/18	0.95	0.14	14,16,18,18	18
4	CX6	C	801[A]	18/18	0.95	0.14	12,15,18,18	18
4	CX6	F	803[B]	18/18	0.95	0.13	13,17,18,19	18
3	QUS	A	807	13/13	0.96	0.07	11,13,16,17	0
2	ZN	C	823	1/1	0.97	0.06	24,24,24,24	0
3	QUS	C	809	13/13	0.97	0.07	11,12,17,18	0
2	ZN	F	828	1/1	0.97	0.06	24,24,24,24	0
3	QUS	E	811	13/13	0.97	0.07	10,11,14,15	0
3	QUS	D	810	13/13	0.97	0.06	12,14,16,17	0
3	QUS	B	808	13/13	0.98	0.07	10,11,14,14	0
2	ZN	F	830	1/1	0.98	0.05	41,41,41,41	0
2	ZN	C	825	1/1	0.98	0.03	39,39,39,39	0
2	ZN	E	829	1/1	0.99	0.05	18,18,18,18	0
2	ZN	B	824	1/1	0.99	0.08	17,17,17,17	0
2	ZN	D	826	1/1	0.99	0.07	18,18,18,18	0
2	ZN	E	827	1/1	0.99	0.06	22,22,22,22	0
2	ZN	B	822	1/1	0.99	0.05	24,24,24,24	0
2	ZN	A	821	1/1	0.99	0.06	16,16,16,16	0

## 6.5 Other polymers [i](#)

There are no such residues in this entry.