



Full wwPDB X-ray Structure Validation Report ⓘ

Aug 8, 2020 – 08:28 PM BST

PDB ID : 2ALW
Title : Golgi alpha-mannosidase II complex with Noeuromycin
Authors : Kuntz, D.A.; Bols, M.B.; Liu, H.; Rose, D.R.
Deposited on : 2005-08-08
Resolution : 1.86 Å(reported)

This is a Full wwPDB X-ray Structure Validation Report for a publicly released PDB entry.

We welcome your comments at validation@mail.wwpdb.org

A user guide is available at

<https://www.wwpdb.org/validation/2017/XrayValidationReportHelp>

with specific help available everywhere you see the ⓘ symbol.

The following versions of software and data (see [references ⓘ](#)) were used in the production of this report:

MolProbity : 4.02b-467
Mogul : 1.8.5 (274361), CSD as541be (2020)
Xtriage (Phenix) : 1.13
EDS : 2.13.1
Percentile statistics : 20191225.v01 (using entries in the PDB archive December 25th 2019)
Refmac : 5.8.0158
CCP4 : 7.0.044 (Gargrove)
Ideal geometry (proteins) : Engh & Huber (2001)
Ideal geometry (DNA, RNA) : Parkinson et al. (1996)
Validation Pipeline (wwPDB-VP) : 2.13.1

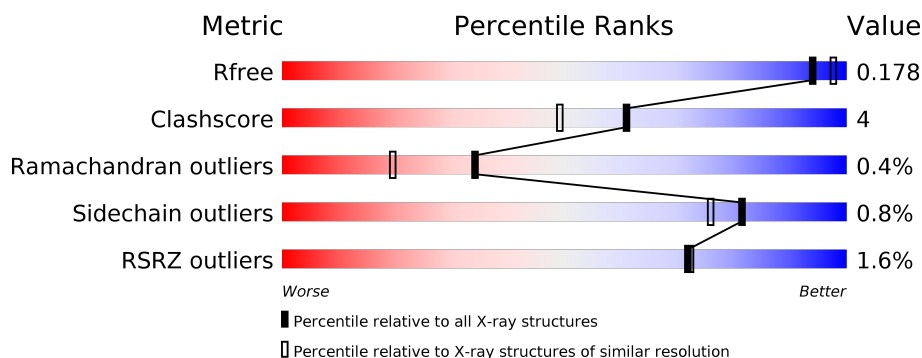
1 Overall quality at a glance

The following experimental techniques were used to determine the structure:

X-RAY DIFFRACTION

The reported resolution of this entry is 1.86 Å.

Percentile scores (ranging between 0-100) for global validation metrics of the entry are shown in the following graphic. The table shows the number of entries on which the scores are based.



Metric	Whole archive (#Entries)	Similar resolution (#Entries, resolution range(Å))
R_{free}	130704	2469 (1.86-1.86)
Clashscore	141614	2625 (1.86-1.86)
Ramachandran outliers	138981	2592 (1.86-1.86)
Sidechain outliers	138945	2592 (1.86-1.86)
RSRZ outliers	127900	2436 (1.86-1.86)

The table below summarises the geometric issues observed across the polymeric chains and their fit to the electron density. The red, orange, yellow and green segments on the lower bar indicate the fraction of residues that contain outliers for ≥ 3 , 2, 1 and 0 types of geometric quality criteria respectively. A grey segment represents the fraction of residues that are not modelled. The numeric value for each fraction is indicated below the corresponding segment, with a dot representing fractions $\leq 5\%$. The upper red bar (where present) indicates the fraction of residues that have poor fit to the electron density. The numeric value is given above the bar.

Mol	Chain	Length	Quality of chain
1	A	1045	<div> <div>2%</div> <div>88%</div> <div>9%</div> <div>.</div> </div>

The following table lists non-polymeric compounds, carbohydrate monomers and non-standard residues in protein, DNA, RNA chains that are outliers for geometric or electron-density-fit criteria:

Mol	Type	Chain	Res	Chirality	Geometry	Clashes	Electron density
2	NAG	A	2001	X	-	-	X
5	MPD	A	3001	X	-	-	-

2 Entry composition

There are 6 unique types of molecules in this entry. The entry contains 9288 atoms, of which 0 are hydrogens and 0 are deuteriums.

In the tables below, the ZeroOcc column contains the number of atoms modelled with zero occupancy, the AltConf column contains the number of residues with at least one atom in alternate conformation and the Trace column contains the number of residues modelled with at most 2 atoms.

- Molecule 1 is a protein called Alpha-mannosidase II.

Mol	Chain	Residues	Atoms					ZeroOcc	AltConf	Trace
1	A	1014	Total	C	N	O	S	0	0	0
			8181	5202	1434	1506	39			

There are 13 discrepancies between the modelled and reference sequences:

Chain	Residue	Modelled	Actual	Comment	Reference
A	1	ARG	-	cloning artifact	UNP Q24451
A	2	SER	-	cloning artifact	UNP Q24451
A	3	SER	-	cloning artifact	UNP Q24451
A	4	HIS	-	expression tag	UNP Q24451
A	5	HIS	-	expression tag	UNP Q24451
A	6	HIS	-	expression tag	UNP Q24451
A	7	HIS	-	expression tag	UNP Q24451
A	8	HIS	-	expression tag	UNP Q24451
A	9	HIS	-	expression tag	UNP Q24451
A	10	GLY	-	cloning artifact	UNP Q24451
A	11	GLU	-	cloning artifact	UNP Q24451
A	12	PHE	-	cloning artifact	UNP Q24451
A	907	LYS	GLU	variant	UNP Q24451

- Molecule 2 is 2-acetamido-2-deoxy-beta-D-glucopyranose (three-letter code: NAG) (formula: $C_8H_{15}NO_6$).

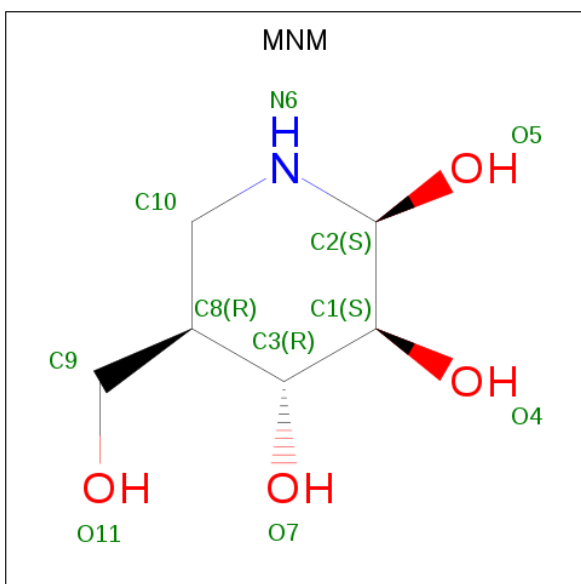


Mol	Chain	Residues	Atoms				ZeroOcc	AltConf
2	A	1	Total	C	N	O	0	0
			14	8	1	5		

- Molecule 3 is ZINC ION (three-letter code: ZN) (formula: Zn).

Mol	Chain	Residues	Atoms		ZeroOcc	AltConf
3	A	1	Total	Zn	0	0
			1	1		

- Molecule 4 is (2S,3S,4R,5R)-2,3,4-TRIHYDROXY-5-HYDROXYMETHYL-PIPERIDINE (three-letter code: MNM) (formula: C₆H₁₃NO₄).



Mol	Chain	Residues	Atoms				ZeroOcc	AltConf
4	A	1	Total	C	N	O	0	0
			11	6	1	4		

- Molecule 5 is (4S)-2-METHYL-2,4-PENTANEDIOL (three-letter code: MPD) (formula: $C_6H_{14}O_2$).



Mol	Chain	Residues	Atoms			ZeroOcc	AltConf
5	A	1	Total	C	O	0	0
			8	6	2		

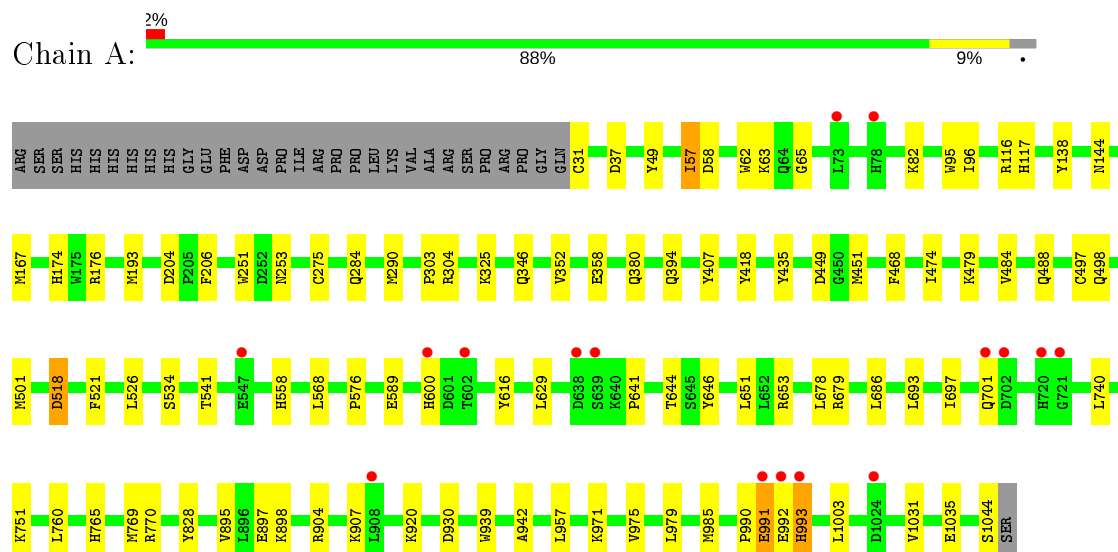
- Molecule 6 is water.

Mol	Chain	Residues	Atoms		ZeroOcc	AltConf
6	A	1073	Total	O	0	0
			1073	1073		

3 Residue-property plots [i](#)

These plots are drawn for all protein, RNA, DNA and oligosaccharide chains in the entry. The first graphic for a chain summarises the proportions of the various outlier classes displayed in the second graphic. The second graphic shows the sequence view annotated by issues in geometry and electron density. Residues are color-coded according to the number of geometric quality criteria for which they contain at least one outlier: green = 0, yellow = 1, orange = 2 and red = 3 or more. A red dot above a residue indicates a poor fit to the electron density ($RSRZ > 2$). Stretches of 2 or more consecutive residues without any outlier are shown as a green connector. Residues present in the sample, but not in the model, are shown in grey.

- Molecule 1: Alpha-mannosidase II



4 Data and refinement statistics

Property	Value	Source
Space group	P 21 21 21	Depositor
Cell constants a, b, c, α , β , γ	68.50Å 109.19Å 138.15Å 90.00° 90.00° 90.00°	Depositor
Resolution (Å)	26.85 – 1.86 29.68 – 1.86	Depositor EDS
% Data completeness (in resolution range)	97.1 (26.85-1.86) 96.9 (29.68-1.86)	Depositor EDS
R_{merge}	0.06	Depositor
R_{sym}	(Not available)	Depositor
$\langle I/\sigma(I) \rangle$ ¹	4.64 (at 1.85Å)	Xtriage
Refinement program	CNS 1.1	Depositor
R, R_{free}	0.141 , 0.181 0.137 , 0.178	Depositor DCC
R_{free} test set	4451 reflections (5.06%)	wwPDB-VP
Wilson B-factor (Å ²)	16.6	Xtriage
Anisotropy	0.333	Xtriage
Bulk solvent k_{sol} (e/Å ³), B_{sol} (Å ²)	0.34 , 56.4	EDS
L-test for twinning ²	$\langle L \rangle = 0.49$, $\langle L^2 \rangle = 0.32$	Xtriage
Estimated twinning fraction	No twinning to report.	Xtriage
F_o, F_c correlation	0.97	EDS
Total number of atoms	9288	wwPDB-VP
Average B, all atoms (Å ²)	19.0	wwPDB-VP

Xtriage's analysis on translational NCS is as follows: *The largest off-origin peak in the Patterson function is 4.17% of the height of the origin peak. No significant pseudotranslation is detected.*

¹Intensities estimated from amplitudes.

²Theoretical values of $\langle |L| \rangle$, $\langle L^2 \rangle$ for acentric reflections are 0.5, 0.333 respectively for untwinned datasets, and 0.375, 0.2 for perfectly twinned datasets.

5 Model quality

5.1 Standard geometry

Bond lengths and bond angles in the following residue types are not validated in this section: MNM, MPD, ZN, NAG

The Z score for a bond length (or angle) is the number of standard deviations the observed value is removed from the expected value. A bond length (or angle) with $|Z| > 5$ is considered an outlier worth inspection. RMSZ is the root-mean-square of all Z scores of the bond lengths (or angles).

Mol	Chain	Bond lengths		Bond angles	
		RMSZ	$\# Z > 5$	RMSZ	$\# Z > 5$
1	A	0.87	0/8406	0.87	2/11416 (0.0%)

Chiral center outliers are detected by calculating the chiral volume of a chiral center and verifying if the center is modelled as a planar moiety or with the opposite hand. A planarity outlier is detected by checking planarity of atoms in a peptide group, atoms in a mainchain group or atoms of a sidechain that are expected to be planar.

Mol	Chain	#Chirality outliers	#Planarity outliers
1	A	0	3

There are no bond length outliers.

All (2) bond angle outliers are listed below:

Mol	Chain	Res	Type	Atoms	Z	Observed($^{\circ}$)	Ideal($^{\circ}$)
1	A	167	MET	N-CA-C	-5.83	95.26	111.00
1	A	518	ASP	N-CA-C	-5.39	96.44	111.00

There are no chirality outliers.

All (3) planarity outliers are listed below:

Mol	Chain	Res	Type	Group
1	A	407	TYR	Sidechain
1	A	49	TYR	Sidechain
1	A	646	TYR	Sidechain

5.2 Too-close contacts

In the following table, the Non-H and H(model) columns list the number of non-hydrogen atoms and hydrogen atoms in the chain respectively. The H(added) column lists the number of hydrogen

atoms added and optimized by MolProbity. The Clashes column lists the number of clashes within the asymmetric unit, whereas Symm-Clashes lists symmetry related clashes.

Mol	Chain	Non-H	H(model)	H(added)	Clashes	Symm-Clashes
1	A	8181	0	7971	71	0
2	A	14	0	13	0	0
3	A	1	0	0	0	0
4	A	11	0	11	0	0
5	A	8	0	14	3	0
6	A	1073	0	0	21	0
All	All	9288	0	8009	73	0

The all-atom clashscore is defined as the number of clashes found per 1000 atoms (including hydrogen atoms). The all-atom clashscore for this structure is 4.

All (73) close contacts within the same asymmetric unit are listed below, sorted by their clash magnitude.

Atom-1	Atom-2	Interatomic distance (Å)	Clash overlap (Å)
5:A:3001:MPD:H13	6:A:5381:HOH:O	1.76	0.83
5:A:3001:MPD:H11	6:A:5379:HOH:O	1.89	0.72
1:A:568:LEU:HD12	1:A:770:ARG:HD3	1.73	0.70
1:A:346:GLN:NE2	6:A:5418:HOH:O	2.27	0.67
1:A:284:GLN:OE1	1:A:304:ARG:NH2	2.29	0.66
1:A:290:MET:HG3	1:A:303:PRO:HG2	1.77	0.66
1:A:1031:VAL:HB	1:A:1035:GLU:HG2	1.77	0.65
1:A:541:THR:HG23	6:A:5225:HOH:O	1.97	0.65
1:A:82:LYS:HE3	6:A:5494:HOH:O	1.97	0.65
1:A:589:GLU:HG3	6:A:5120:HOH:O	1.96	0.63
1:A:116:ARG:HG2	6:A:5606:HOH:O	1.98	0.62
1:A:589:GLU:OE2	1:A:751:LYS:HD3	2.00	0.61
1:A:31:CYS:N	6:A:6042:HOH:O	2.34	0.60
1:A:678:LEU:HD12	1:A:769:MET:HE1	1.84	0.60
1:A:990:PRO:O	1:A:991:GLU:O	2.20	0.60
1:A:497:CYS:HB3	1:A:501:MET:HE2	1.85	0.59
1:A:37:ASP:HB2	1:A:253:ASN:ND2	2.18	0.59
1:A:975:VAL:HG21	1:A:1003:LEU:CD1	2.33	0.59
1:A:63:LYS:HG3	5:A:3001:MPD:H31	1.85	0.58
1:A:394:GLN:O	1:A:394:GLN:HG2	2.04	0.57
1:A:96:ILE:HG23	1:A:479:LYS:HD2	1.87	0.56
1:A:498:GLN:HA	1:A:501:MET:HE3	1.88	0.56
1:A:898:LYS:NZ	6:A:5016:HOH:O	2.40	0.54
1:A:57:ILE:HD12	1:A:58:ASP:N	2.23	0.53
1:A:57:ILE:C	1:A:57:ILE:HD12	2.28	0.53

Continued on next page...

Continued from previous page...

Atom-1	Atom-2	Interatomic distance (Å)	Clash overlap (Å)
1:A:117:HIS:ND1	6:A:5598:HOH:O	2.22	0.52
1:A:651:LEU:HD11	1:A:653:ARG:HD2	1.91	0.52
1:A:990:PRO:O	1:A:992:GLU:HG2	2.09	0.52
1:A:895:VAL:HG12	1:A:897:GLU:HG3	1.92	0.51
1:A:693:LEU:HD13	6:A:5025:HOH:O	2.10	0.51
1:A:686:LEU:HD22	1:A:697:ILE:HG12	1.93	0.50
1:A:501:MET:HE1	1:A:526:LEU:HD11	1.92	0.50
1:A:651:LEU:CD1	1:A:653:ARG:HG2	2.42	0.49
1:A:904:ARG:HG2	1:A:985:MET:SD	2.52	0.49
1:A:641:PRO:HG2	1:A:644:THR:HB	1.93	0.49
1:A:62:TRP:CD2	1:A:65:GLY:HA3	2.47	0.49
1:A:541:THR:HG21	6:A:5239:HOH:O	2.12	0.49
1:A:679:ARG:NH1	1:A:701:GLN:HG3	2.27	0.49
1:A:693:LEU:HD23	1:A:765:HIS:CD2	2.48	0.48
1:A:449:ASP:OD1	1:A:451:MET:HB2	2.13	0.48
1:A:501:MET:CE	1:A:526:LEU:HD11	2.43	0.48
1:A:993:HIS:CG	1:A:993:HIS:O	2.66	0.48
1:A:251:TRP:C	1:A:251:TRP:CD1	2.87	0.48
1:A:290:MET:CG	1:A:303:PRO:HG2	2.42	0.48
1:A:991:GLU:C	1:A:992:GLU:HG2	2.34	0.47
1:A:990:PRO:O	1:A:991:GLU:C	2.52	0.47
1:A:518:ASP:HB3	1:A:521:PHE:HB2	1.96	0.47
1:A:920:LYS:HG3	6:A:5690:HOH:O	2.14	0.47
1:A:138:TYR:CE1	1:A:193:MET:HE3	2.49	0.47
1:A:678:LEU:HD12	1:A:769:MET:CE	2.45	0.47
1:A:138:TYR:CE1	1:A:193:MET:CE	2.98	0.47
1:A:96:ILE:O	1:A:96:ILE:HG22	2.15	0.46
1:A:144:ASN:HB3	6:A:5608:HOH:O	2.15	0.46
1:A:325:LYS:HE2	6:A:5529:HOH:O	2.15	0.46
1:A:116:ARG:NH1	6:A:5606:HOH:O	2.48	0.46
1:A:346:GLN:NE2	6:A:5417:HOH:O	2.48	0.46
1:A:380:GLN:OE1	6:A:5501:HOH:O	2.21	0.45
1:A:740:LEU:HD22	1:A:760:LEU:HD22	1.98	0.45
1:A:957:LEU:HD11	1:A:979:LEU:HG	1.98	0.45
1:A:484:VAL:O	1:A:488:GLN:HG3	2.18	0.44
1:A:576:PRO:HD3	1:A:616:TYR:CE1	2.53	0.43
1:A:558:HIS:HA	1:A:629:LEU:HD23	2.00	0.43
1:A:558:HIS:HB3	1:A:930:ASP:HB2	2.01	0.42
1:A:358:GLU:OE2	6:A:5345:HOH:O	2.21	0.42
1:A:468:PHE:CZ	1:A:474:ILE:HA	2.54	0.42
1:A:57:ILE:HD12	1:A:58:ASP:C	2.40	0.42

Continued on next page...

Continued from previous page...

Atom-1	Atom-2	Interatomic distance (Å)	Clash overlap (Å)
1:A:939:TRP:CD2	1:A:942:ALA:HB2	2.54	0.42
1:A:678:LEU:HD13	1:A:769:MET:HE3	2.02	0.41
1:A:206:PHE:HB2	1:A:418:TYR:CE2	2.54	0.41
1:A:907:LYS:HB3	1:A:907:LYS:HE3	1.85	0.41
1:A:435:TYR:OH	6:A:5645:HOH:O	2.22	0.41
1:A:971:LYS:HG3	6:A:5316:HOH:O	2.21	0.41
1:A:174:HIS:CE1	1:A:176:ARG:HD3	2.55	0.40

There are no symmetry-related clashes.

5.3 Torsion angles [i](#)

5.3.1 Protein backbone [i](#)

In the following table, the Percentiles column shows the percent Ramachandran outliers of the chain as a percentile score with respect to all X-ray entries followed by that with respect to entries of similar resolution.

The Analysed column shows the number of residues for which the backbone conformation was analysed, and the total number of residues.

Mol	Chain	Analysed	Favoured	Allowed	Outliers	Percentiles
1	A	1012/1045 (97%)	983 (97%)	25 (2%)	4 (0%)	34 19

All (4) Ramachandran outliers are listed below:

Mol	Chain	Res	Type
1	A	991	GLU
1	A	993	HIS
1	A	95	TRP
1	A	204	ASP

5.3.2 Protein sidechains [i](#)

In the following table, the Percentiles column shows the percent sidechain outliers of the chain as a percentile score with respect to all X-ray entries followed by that with respect to entries of similar resolution.

The Analysed column shows the number of residues for which the sidechain conformation was analysed, and the total number of residues.

Mol	Chain	Analysed	Rotameric	Outliers	Percentiles	
1	A	901/929 (97%)	894 (99%)	7 (1%)	81	76

All (7) residues with a non-rotameric sidechain are listed below:

Mol	Chain	Res	Type
1	A	57	ILE
1	A	275	CYS
1	A	352	VAL
1	A	534	SER
1	A	600	HIS
1	A	828	TYR
1	A	1044	SER

Some sidechains can be flipped to improve hydrogen bonding and reduce clashes. All (2) such sidechains are listed below:

Mol	Chain	Res	Type
1	A	346	GLN
1	A	347	ASN

5.3.3 RNA [i](#)

There are no RNA molecules in this entry.

5.4 Non-standard residues in protein, DNA, RNA chains [i](#)

There are no non-standard protein/DNA/RNA residues in this entry.

5.5 Carbohydrates [i](#)

There are no monosaccharides in this entry.

5.6 Ligand geometry [i](#)

Of 4 ligands modelled in this entry, 1 is monoatomic - leaving 3 for Mogul analysis.

In the following table, the Counts columns list the number of bonds (or angles) for which Mogul statistics could be retrieved, the number of bonds (or angles) that are observed in the model and the number of bonds (or angles) that are defined in the Chemical Component Dictionary. The Link column lists molecule types, if any, to which the group is linked. The Z score for a bond length (or angle) is the number of standard deviations the observed value is removed from the

expected value. A bond length (or angle) with $|Z| > 2$ is considered an outlier worth inspection. RMSZ is the root-mean-square of all Z scores of the bond lengths (or angles).

Mol	Type	Chain	Res	Link	Bond lengths			Bond angles		
					Counts	RMSZ	$\# Z > 2$	Counts	RMSZ	$\# Z > 2$
4	MNM	A	4001	3	9,11,11	0.87	0	10,15,15	2.23	4 (40%)
2	NAG	A	2001	1	14,14,15	0.83	0	17,19,21	0.72	0
5	MPD	A	3001	-	7,7,7	0.93	0	9,10,10	0.49	0

In the following table, the Chirals column lists the number of chiral outliers, the number of chiral centers analysed, the number of these observed in the model and the number defined in the Chemical Component Dictionary. Similar counts are reported in the Torsion and Rings columns. '-' means no outliers of that kind were identified.

Mol	Type	Chain	Res	Link	Chirals	Torsions	Rings
5	MPD	A	3001	-	1/1/2/2	2/5/5/5	-
2	NAG	A	2001	1	1/1/5/7	4/6/23/26	0/1/1/1
4	MNM	A	4001	3	-	0/2/19/19	0/1/1/1

There are no bond length outliers.

All (4) bond angle outliers are listed below:

Mol	Chain	Res	Type	Atoms	Z	Observed(°)	Ideal(°)
4	A	4001	MNM	O4-C1-C2	3.62	115.87	109.39
4	A	4001	MNM	C10-N6-C2	3.62	115.96	108.98
4	A	4001	MNM	C10-C8-C3	-2.68	103.40	108.72
4	A	4001	MNM	O7-C3-C8	-2.33	106.16	110.08

All (2) chirality outliers are listed below:

Mol	Chain	Res	Type	Atom
2	A	2001	NAG	C1
5	A	3001	MPD	C4

All (6) torsion outliers are listed below:

Mol	Chain	Res	Type	Atoms
2	A	2001	NAG	C8-C7-N2-C2
2	A	2001	NAG	O7-C7-N2-C2
5	A	3001	MPD	C2-C3-C4-O4
2	A	2001	NAG	C4-C5-C6-O6
2	A	2001	NAG	O5-C5-C6-O6
5	A	3001	MPD	C2-C3-C4-C5

There are no ring outliers.

1 monomer is involved in 3 short contacts:

Mol	Chain	Res	Type	Clashes	Symm-Clashes
5	A	3001	MPD	3	0

5.7 Other polymers [i](#)

There are no such residues in this entry.

5.8 Polymer linkage issues [i](#)

There are no chain breaks in this entry.

6 Fit of model and data [i](#)

6.1 Protein, DNA and RNA chains [i](#)

In the following table, the column labelled ‘#RSRZ> 2’ contains the number (and percentage) of RSRZ outliers, followed by percent RSRZ outliers for the chain as percentile scores relative to all X-ray entries and entries of similar resolution. The OWAB column contains the minimum, median, 95th percentile and maximum values of the occupancy-weighted average B-factor per residue. The column labelled ‘Q< 0.9’ lists the number of (and percentage) of residues with an average occupancy less than 0.9.

Mol	Chain	Analysed	<RSRZ>	#RSRZ>2	OWAB(Å ²)	Q<0.9
1	A	1014/1045 (97%)	-0.34	16 (1%) 72 72	9, 16, 32, 71	0

All (16) RSRZ outliers are listed below:

Mol	Chain	Res	Type	RSRZ
1	A	993	HIS	5.3
1	A	702	ASP	4.2
1	A	701	GLN	4.1
1	A	638	ASP	3.9
1	A	991	GLU	3.9
1	A	78	HIS	3.8
1	A	720	HIS	3.8
1	A	992	GLU	3.2
1	A	1024	ASP	3.1
1	A	721	GLY	2.9
1	A	602	THR	2.6
1	A	547	GLU	2.5
1	A	600	HIS	2.2
1	A	639	SER	2.1
1	A	73	LEU	2.1
1	A	908	LEU	2.0

6.2 Non-standard residues in protein, DNA, RNA chains [i](#)

There are no non-standard protein/DNA/RNA residues in this entry.

6.3 Carbohydrates [i](#)

There are no monosaccharides in this entry.

6.4 Ligands [i](#)

In the following table, the Atoms column lists the number of modelled atoms in the group and the number defined in the chemical component dictionary. The B-factors column lists the minimum, median, 95th percentile and maximum values of B factors of atoms in the group. The column labelled 'Q< 0.9' lists the number of atoms with occupancy less than 0.9.

Mol	Type	Chain	Res	Atoms	RSCC	RSR	B-factors(\AA^2)	Q<0.9
2	NAG	A	2001	14/15	0.73	0.42	54,64,68,68	0
5	MPD	A	3001	8/8	0.94	0.12	17,21,25,26	0
4	MNM	A	4001	11/11	0.98	0.07	11,12,15,16	0
3	ZN	A	5001	1/1	1.00	0.04	14,14,14,14	0

6.5 Other polymers [i](#)

There are no such residues in this entry.