



wwPDB X-ray Structure Validation Summary Report ⓘ

Nov 8, 2021 – 12:05 pm GMT

PDB ID : 7ALX
Title : Sav-SOD: Chimeric Streptavidin-cSOD as Host for Artificial Metalloenzymes
Authors : Igareta, N.V.; Christoffel, F.; Peterson, R.L.; Ward, T.R.
Deposited on : 2020-10-07
Resolution : 1.80 Å(reported)

This is a wwPDB X-ray Structure Validation Summary Report for a publicly released PDB entry.

We welcome your comments at validation@mail.wwpdb.org

A user guide is available at

<https://www.wwpdb.org/validation/2017/XrayValidationReportHelp>

with specific help available everywhere you see the ⓘ symbol.

The following versions of software and data (see [references ⓘ](#)) were used in the production of this report:

MolProbity : 4.02b-467
Mogul : 1.8.4 (270009), CSD as541be (2020)
Xtriage (Phenix) : 1.13
EDS : 2.23.2
buster-report : 1.1.7 (2018)
Percentile statistics : 20191225.v01 (using entries in the PDB archive December 25th 2019)
Refmac : 5.8.0267
CCP4 : 7.1.010 (Gargrove)
Ideal geometry (proteins) : Engh & Huber (2001)
Ideal geometry (DNA, RNA) : Parkinson et al. (1996)
Validation Pipeline (wwPDB-VP) : 2.23.2

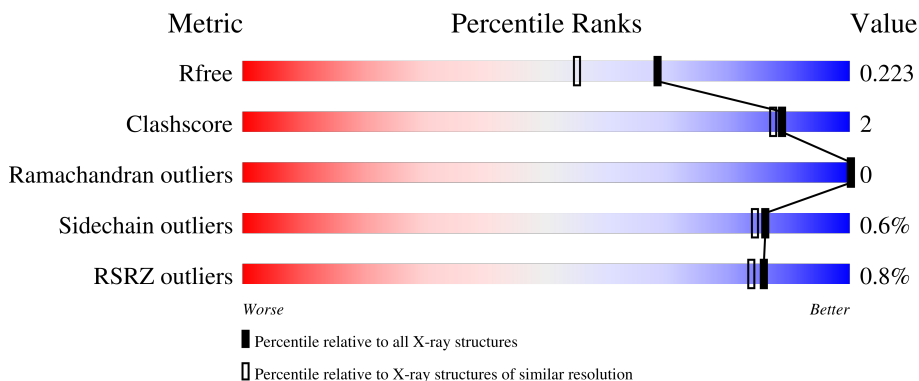
1 Overall quality at a glance

The following experimental techniques were used to determine the structure:

X-RAY DIFFRACTION

The reported resolution of this entry is 1.80 Å.

Percentile scores (ranging between 0-100) for global validation metrics of the entry are shown in the following graphic. The table shows the number of entries on which the scores are based.



Metric	Whole archive (#Entries)	Similar resolution (#Entries, resolution range(Å))
R_{free}	130704	5950 (1.80-1.80)
Clashscore	141614	6793 (1.80-1.80)
Ramachandran outliers	138981	6697 (1.80-1.80)
Sidechain outliers	138945	6696 (1.80-1.80)
RSRZ outliers	127900	5850 (1.80-1.80)

The table below summarises the geometric issues observed across the polymeric chains and their fit to the electron density. The red, orange, yellow and green segments of the lower bar indicate the fraction of residues that contain outliers for ≥ 3 , 2, 1 and 0 types of geometric quality criteria respectively. A grey segment represents the fraction of residues that are not modelled. The numeric value for each fraction is indicated below the corresponding segment, with a dot representing fractions $\leq 5\%$. The upper red bar (where present) indicates the fraction of residues that have poor fit to the electron density. The numeric value is given above the bar.

Mol	Chain	Length	Quality of chain
1	AAA	194	<div> <div>%</div> <div> <div></div> <div>59%</div> <div>.</div> <div>37%</div> </div> </div>
1	BBB	194	<div> <div>62%</div> <div>.</div> <div>35%</div> </div>

2 Entry composition

There are 3 unique types of molecules in this entry. The entry contains 3819 atoms, of which 1733 are hydrogens and 0 are deuteriums.

In the tables below, the ZeroOcc column contains the number of atoms modelled with zero occupancy, the AltConf column contains the number of residues with at least one atom in alternate conformation and the Trace column contains the number of residues modelled with at most 2 atoms.

- Molecule 1 is a protein called Streptavidin, Superoxide dismutase [Cu-Zn], Streptavidin.

Mol	Chain	Residues	Atoms					ZeroOcc	AltConf	Trace
1	AAA	123	Total	C	H	N	O	39	1	0
			1772	571	859	158	184			
1	BBB	126	Total	C	H	N	O	39	1	0
			1809	581	874	163	191			

There are 30 discrepancies between the modelled and reference sequences:

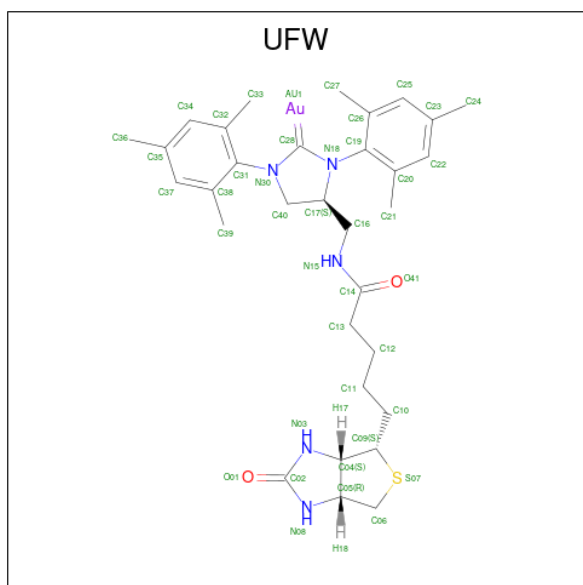
Chain	Residue	Modelled	Actual	Comment	Reference
AAA	0	MET	-	initiating methionine	UNP P22629
AAA	1	ALA	-	expression tag	UNP P22629
AAA	2	SER	-	expression tag	UNP P22629
AAA	3	MET	-	expression tag	UNP P22629
AAA	4	THR	-	expression tag	UNP P22629
AAA	5	GLY	-	expression tag	UNP P22629
AAA	6	GLY	-	expression tag	UNP P22629
AAA	7	GLN	-	expression tag	UNP P22629
AAA	8	GLN	-	expression tag	UNP P22629
AAA	9	MET	-	expression tag	UNP P22629
AAA	10	GLY	-	expression tag	UNP P22629
AAA	11	ARG	-	expression tag	UNP P22629
AAA	12	ASP	-	expression tag	UNP P22629
AAA	13	GLN	-	expression tag	UNP P22629
AAA	155	ALA	LYS	engineered mutation	UNP P22629
BBB	0	MET	-	initiating methionine	UNP P22629
BBB	1	ALA	-	expression tag	UNP P22629
BBB	2	SER	-	expression tag	UNP P22629
BBB	3	MET	-	expression tag	UNP P22629
BBB	4	THR	-	expression tag	UNP P22629
BBB	5	GLY	-	expression tag	UNP P22629
BBB	6	GLY	-	expression tag	UNP P22629
BBB	7	GLN	-	expression tag	UNP P22629
BBB	8	GLN	-	expression tag	UNP P22629
BBB	9	MET	-	expression tag	UNP P22629

Continued on next page...

Continued from previous page...

Chain	Residue	Modelled	Actual	Comment	Reference
BBB	10	GLY	-	expression tag	UNP P22629
BBB	11	ARG	-	expression tag	UNP P22629
BBB	12	ASP	-	expression tag	UNP P22629
BBB	13	GLN	-	expression tag	UNP P22629
BBB	155	ALA	LYS	engineered mutation	UNP P22629

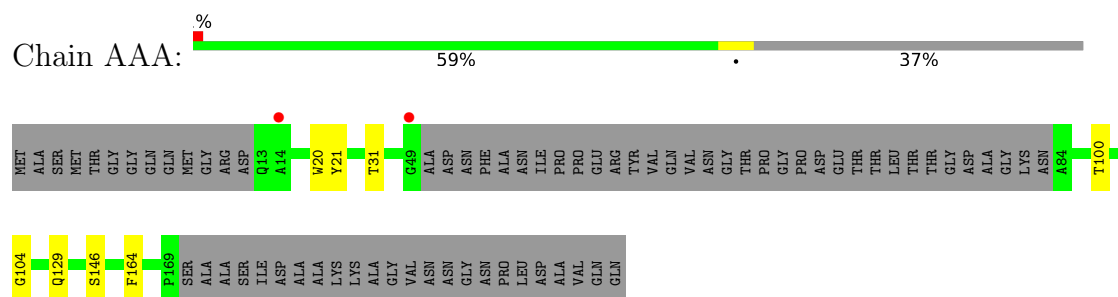
- Molecule 2 is ((4S)-1,3-dimesityl-4-((5-((3aS,4S,6aR)-2-oxohexahydro-1H-thieno[3,4-d]imidazol-4-yl)pentanamido)methyl)imidazolidin-2-yl)gold (three-letter code: UFW) (formula: $C_{32}H_{43}AuN_5O_2S$) (labeled as "Ligand of Interest" by depositor).



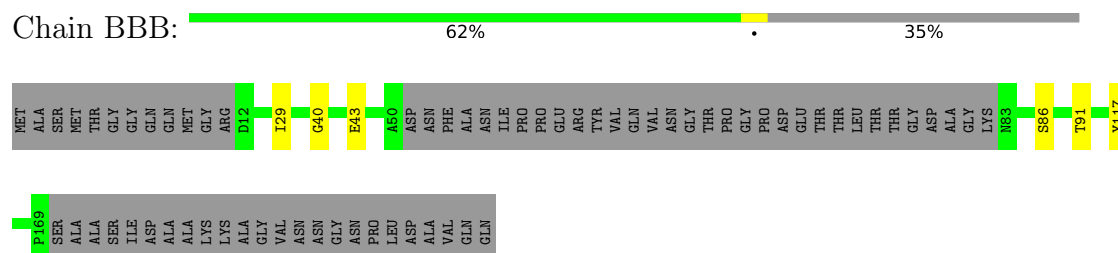
3 Residue-property plots [i](#)

These plots are drawn for all protein, RNA, DNA and oligosaccharide chains in the entry. The first graphic for a chain summarises the proportions of the various outlier classes displayed in the second graphic. The second graphic shows the sequence view annotated by issues in geometry and electron density. Residues are color-coded according to the number of geometric quality criteria for which they contain at least one outlier: green = 0, yellow = 1, orange = 2 and red = 3 or more. A red dot above a residue indicates a poor fit to the electron density ($RSRZ > 2$). Stretches of 2 or more consecutive residues without any outlier are shown as a green connector. Residues present in the sample, but not in the model, are shown in grey.

- Molecule 1: Streptavidin,Superoxide dismutase [Cu-Zn],Streptavidin



- Molecule 1: Streptavidin,Superoxide dismutase [Cu-Zn],Streptavidin



4 Data and refinement statistics

Property	Value	Source
Space group	P 4 ₂ 2 ₁ 2	Depositor
Cell constants a, b, c, α , β , γ	102.53Å 102.53Å 59.08Å 90.00° 90.00° 90.00°	Depositor
Resolution (Å)	45.89 – 1.80 45.85 – 1.80	Depositor EDS
% Data completeness (in resolution range)	100.0 (45.89-1.80) 100.0 (45.85-1.80)	Depositor EDS
R_{merge}	(Not available)	Depositor
R_{sym}	(Not available)	Depositor
$\langle I/\sigma(I) \rangle$ ¹	3.46 (at 1.79Å)	Xtriage
Refinement program	REFMAC 5.8.0267	Depositor
R, R_{free}	0.179 , 0.218 0.187 , 0.223	Depositor DCC
R_{free} test set	1445 reflections (4.86%)	wwPDB-VP
Wilson B-factor (Å ²)	24.2	Xtriage
Anisotropy	0.098	Xtriage
Bulk solvent k_{sol} (e/Å ³), B_{sol} (Å ²)	(Not available) , (Not available)	EDS
L-test for twinning ²	$\langle L \rangle = 0.48$, $\langle L^2 \rangle = 0.31$	Xtriage
Estimated twinning fraction	No twinning to report.	Xtriage
F_o, F_c correlation	0.96	EDS
Total number of atoms	3819	wwPDB-VP
Average B, all atoms (Å ²)	29.0	wwPDB-VP

Xtriage's analysis on translational NCS is as follows: *The largest off-origin peak in the Patterson function is 5.26% of the height of the origin peak. No significant pseudotranslation is detected.*

¹Intensities estimated from amplitudes.

²Theoretical values of $\langle |L| \rangle$, $\langle L^2 \rangle$ for acentric reflections are 0.5, 0.333 respectively for untwinned datasets, and 0.375, 0.2 for perfectly twinned datasets.

5 Model quality [i](#)

5.1 Standard geometry [i](#)

Bond lengths and bond angles in the following residue types are not validated in this section: UFW

The Z score for a bond length (or angle) is the number of standard deviations the observed value is removed from the expected value. A bond length (or angle) with $|Z| > 5$ is considered an outlier worth inspection. RMSZ is the root-mean-square of all Z scores of the bond lengths (or angles).

Mol	Chain	Bond lengths		Bond angles	
		RMSZ	$\# Z > 5$	RMSZ	$\# Z > 5$
1	AAA	0.73	0/938	0.89	0/1284
1	BBB	0.71	0/959	0.90	0/1313
All	All	0.72	0/1897	0.90	0/2597

There are no bond length outliers.

There are no bond angle outliers.

There are no chirality outliers.

There are no planarity outliers.

5.2 Too-close contacts [i](#)

In the following table, the Non-H and H(model) columns list the number of non-hydrogen atoms and hydrogen atoms in the chain respectively. The H(added) column lists the number of hydrogen atoms added and optimized by MolProbity. The Clashes column lists the number of clashes within the asymmetric unit, whereas Symm-Clashes lists symmetry-related clashes.

Mol	Chain	Non-H	H(model)	H(added)	Clashes	Symm-Clashes
1	AAA	913	859	856	4	1
1	BBB	935	874	871	3	1
2	AAA	41	0	0	1	0
2	BBB	41	0	0	0	0
3	AAA	78	0	0	0	0
3	BBB	78	0	0	1	0
All	All	2086	1733	1727	7	1

The all-atom clashscore is defined as the number of clashes found per 1000 atoms (including hydrogen atoms). The all-atom clashscore for this structure is 2.

The worst 5 of 7 close contacts within the same asymmetric unit are listed below, sorted by their

clash magnitude.

Atom-1	Atom-2	Interatomic distance (Å)	Clash overlap (Å)
1:BBB:91[B]:THR:HG23	3:BBB:352:HOH:O	2.00	0.59
1:AAA:146:SER:OG	2:AAA:201:UFW:C40	2.52	0.56
1:AAA:20:TRP:HB3	1:AAA:164:PHE:HB3	2.00	0.44
1:BBB:43:GLU:HA	1:BBB:86:SER:O	2.18	0.44
1:AAA:104:GLY:HA3	1:AAA:129:GLN:HE21	1.85	0.41

All (1) symmetry-related close contacts are listed below. The label for Atom-2 includes the symmetry operator and encoded unit-cell translations to be applied.

Atom-1	Atom-2	Interatomic distance (Å)	Clash overlap (Å)
1:AAA:31:THR:OG1	1:BBB:117:TYR:HH[5_554]	1.59	0.01

5.3 Torsion angles ⓘ

5.3.1 Protein backbone ⓘ

In the following table, the Percentiles column shows the percent Ramachandran outliers of the chain as a percentile score with respect to all X-ray entries followed by that with respect to entries of similar resolution.

The Analysed column shows the number of residues for which the backbone conformation was analysed, and the total number of residues.

Mol	Chain	Analysed	Favoured	Allowed	Outliers	Percentiles	
1	AAA	120/194 (62%)	118 (98%)	2 (2%)	0	100	100
1	BBB	123/194 (63%)	120 (98%)	3 (2%)	0	100	100
All	All	243/388 (63%)	238 (98%)	5 (2%)	0	100	100

There are no Ramachandran outliers to report.

5.3.2 Protein sidechains ⓘ

In the following table, the Percentiles column shows the percent sidechain outliers of the chain as a percentile score with respect to all X-ray entries followed by that with respect to entries of similar resolution.

The Analysed column shows the number of residues for which the sidechain conformation was analysed, and the total number of residues.

Mol	Chain	Analysed	Rotameric	Outliers	Percentiles	
1	AAA	89/140 (64%)	88 (99%)	1 (1%)	73	68
1	BBB	91/140 (65%)	91 (100%)	0	100	100
All	All	180/280 (64%)	179 (99%)	1 (1%)	86	84

All (1) residues with a non-rotameric sidechain are listed below:

Mol	Chain	Res	Type
1	AAA	100	THR

Sometimes sidechains can be flipped to improve hydrogen bonding and reduce clashes. There are no such sidechains identified.

5.3.3 RNA ⓘ

There are no RNA molecules in this entry.

5.4 Non-standard residues in protein, DNA, RNA chains ⓘ

There are no non-standard protein/DNA/RNA residues in this entry.

5.5 Carbohydrates ⓘ

There are no monosaccharides in this entry.

5.6 Ligand geometry ⓘ

2 ligands are modelled in this entry.

There are no bond length outliers.

There are no bond angle outliers.

There are no chirality outliers.

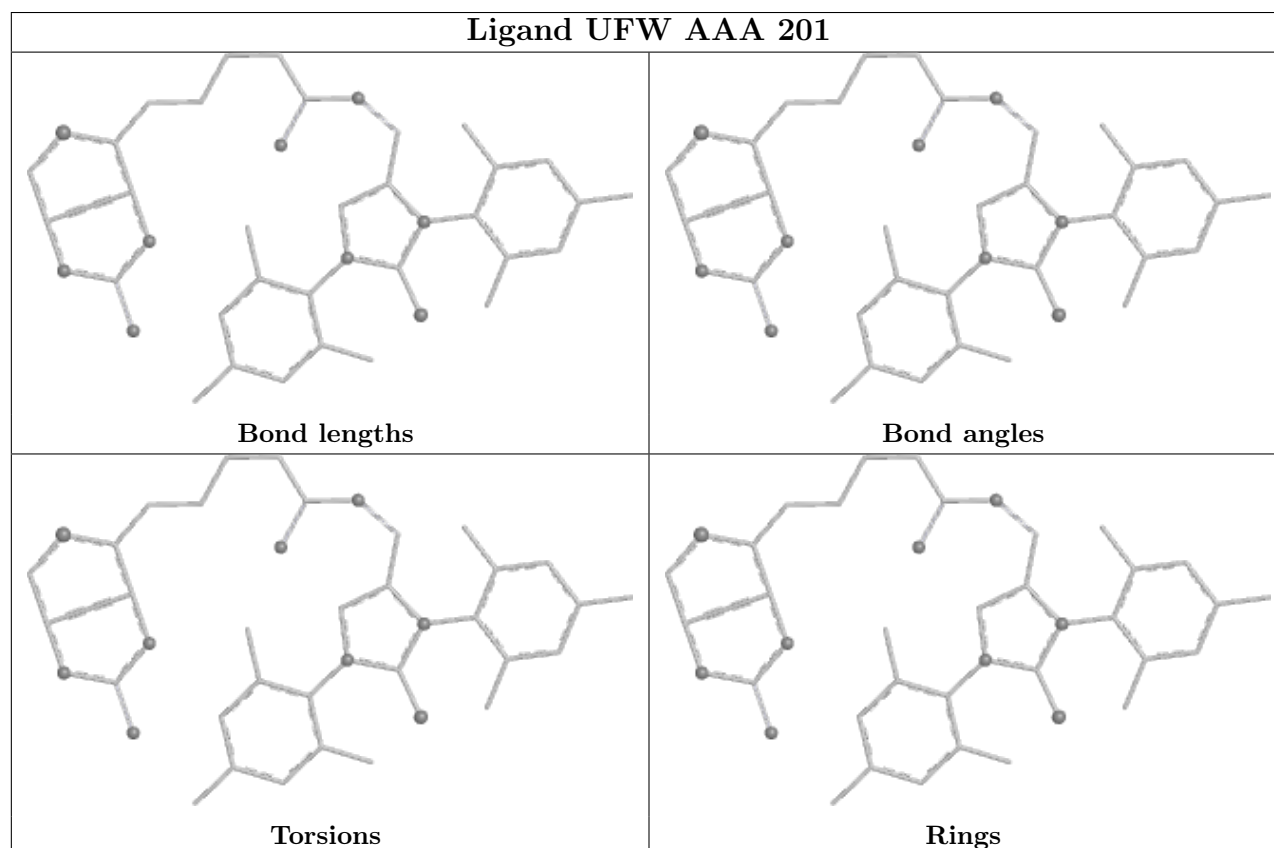
There are no torsion outliers.

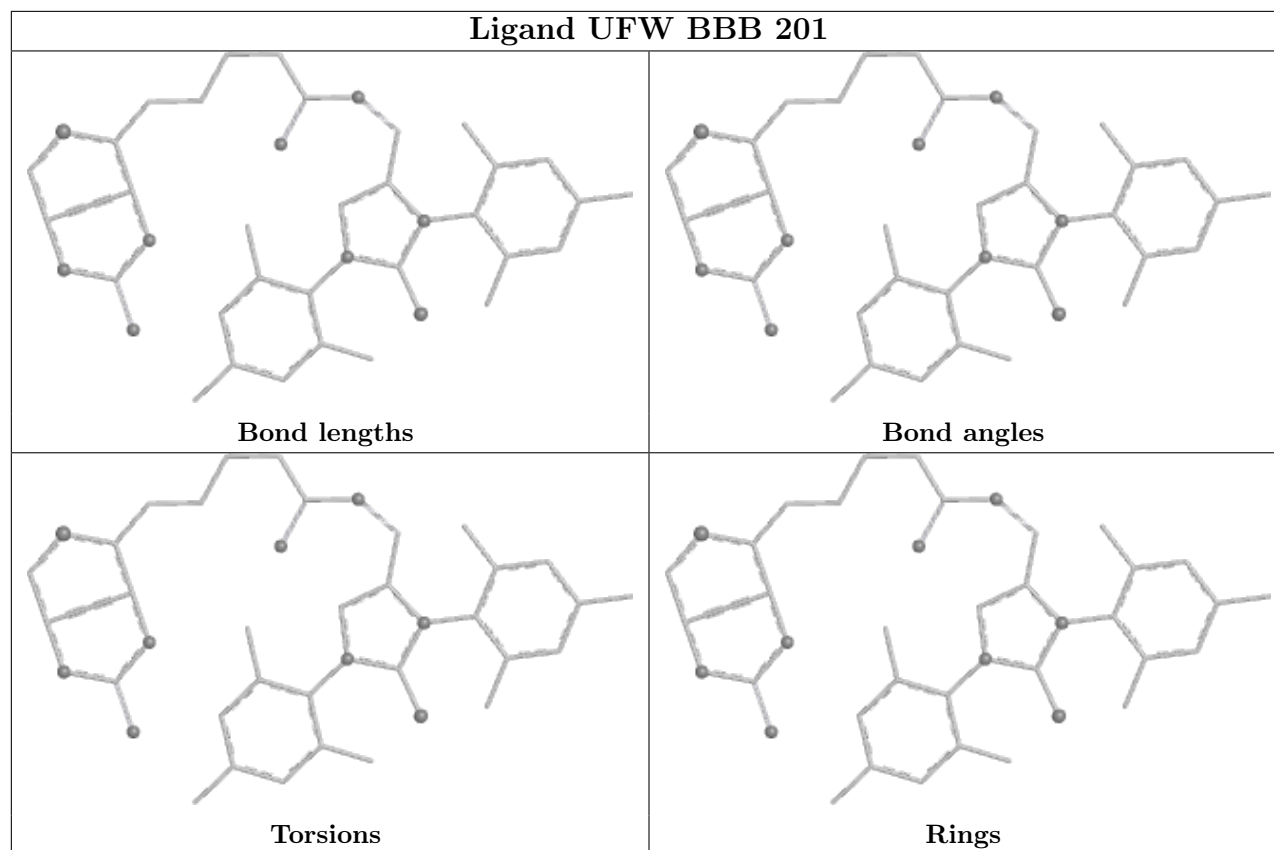
There are no ring outliers.

No monomer is involved in short contacts.

The following is a two-dimensional graphical depiction of Mogul quality analysis of bond lengths, bond angles, torsion angles, and ring geometry for all instances of the Ligand of Interest. In addition, ligands with molecular weight > 250 and outliers as shown on the validation Tables will

also be included. For torsion angles, if less than 5% of the Mogul distribution of torsion angles is within 10 degrees of the torsion angle in question, then that torsion angle is considered an outlier. Any bond that is central to one or more torsion angles identified as an outlier by Mogul will be highlighted in the graph. For rings, the root-mean-square deviation (RMSD) between the ring in question and similar rings identified by Mogul is calculated over all ring torsion angles. If the average RMSD is greater than 60 degrees and the minimal RMSD between the ring in question and any Mogul-identified rings is also greater than 60 degrees, then that ring is considered an outlier. The outliers are highlighted in purple. The color gray indicates Mogul did not find sufficient equivalents in the CSD to analyse the geometry.





5.7 Other polymers [i](#)

There are no such residues in this entry.

5.8 Polymer linkage issues [i](#)

There are no chain breaks in this entry.

6 Fit of model and data [i](#)

6.1 Protein, DNA and RNA chains [i](#)

In the following table, the column labelled ‘#RSRZ> 2’ contains the number (and percentage) of RSRZ outliers, followed by percent RSRZ outliers for the chain as percentile scores relative to all X-ray entries and entries of similar resolution. The OWAB column contains the minimum, median, 95th percentile and maximum values of the occupancy-weighted average B-factor per residue. The column labelled ‘Q< 0.9’ lists the number of (and percentage) of residues with an average occupancy less than 0.9.

Mol	Chain	Analysed	<RSRZ>	#RSRZ>2	OWAB(Å ²)	Q<0.9
1	AAA	123/194 (63%)	-0.05	2 (1%) 72 68	17, 26, 58, 69	1 (0%)
1	BBB	126/194 (64%)	-0.19	0 100 100	17, 27, 49, 70	1 (0%)
All	All	249/388 (64%)	-0.12	2 (0%) 86 84	17, 26, 55, 70	2 (0%)

All (2) RSRZ outliers are listed below:

Mol	Chain	Res	Type	RSRZ
1	AAA	14	ALA	2.7
1	AAA	49	GLY	2.5

6.2 Non-standard residues in protein, DNA, RNA chains [i](#)

There are no non-standard protein/DNA/RNA residues in this entry.

6.3 Carbohydrates [i](#)

There are no monosaccharides in this entry.

6.4 Ligands [i](#)

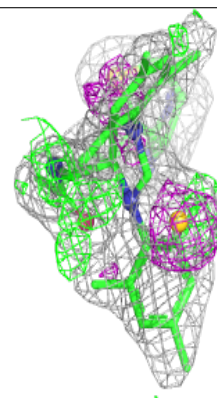
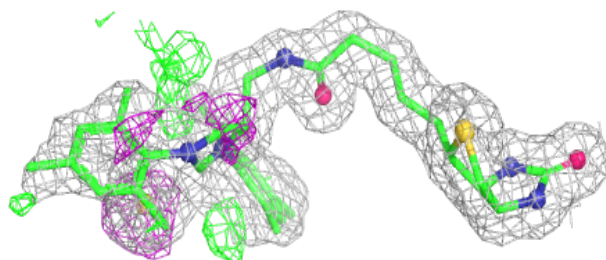
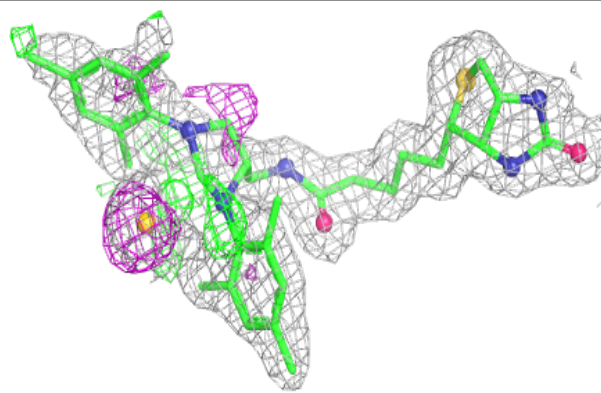
In the following table, the Atoms column lists the number of modelled atoms in the group and the number defined in the chemical component dictionary. The B-factors column lists the minimum, median, 95th percentile and maximum values of B factors of atoms in the group. The column labelled ‘Q< 0.9’ lists the number of atoms with occupancy less than 0.9.

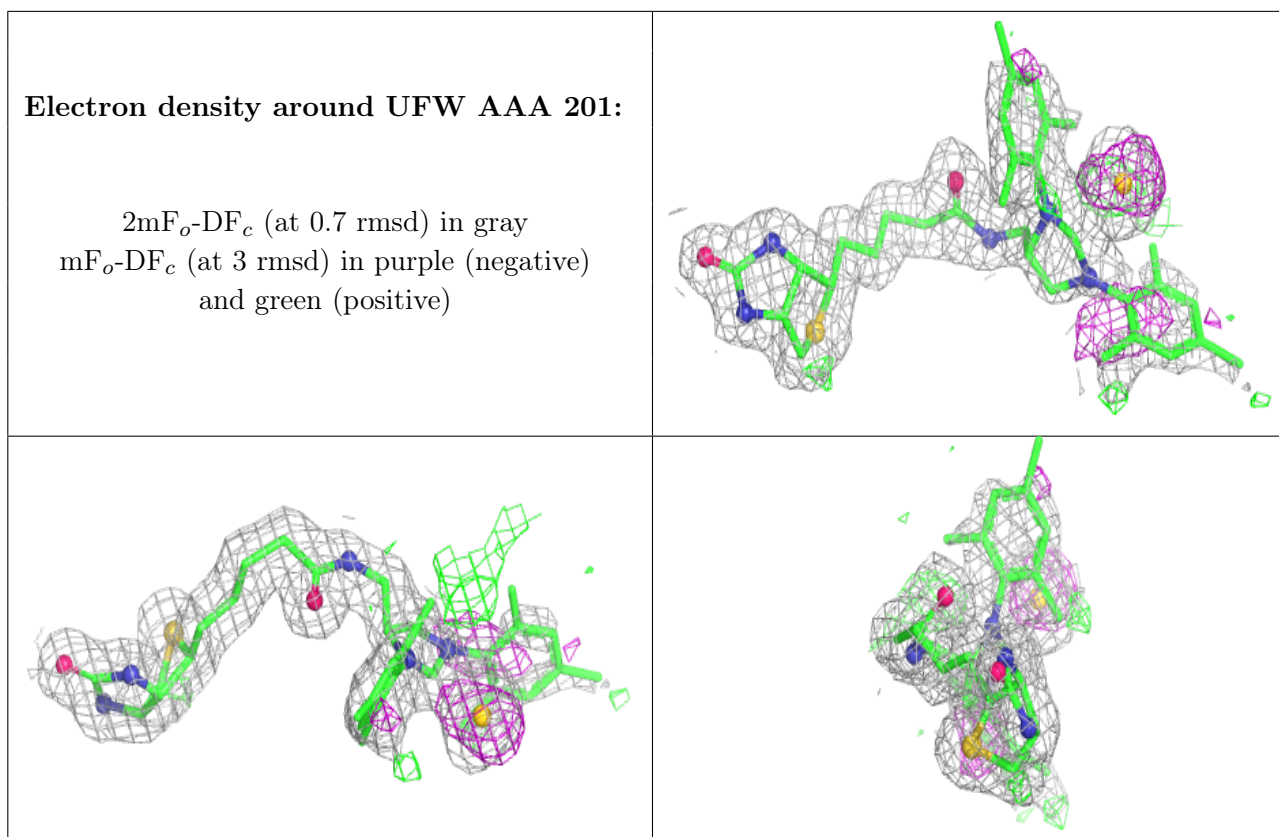
Mol	Type	Chain	Res	Atoms	RSCC	RSR	B-factors(Å ²)	Q<0.9
2	UFW	BBB	201	41/41	0.92	0.15	18,44,57,59	1
2	UFW	AAA	201	41/41	0.94	0.17	16,52,60,62	1

The following is a graphical depiction of the model fit to experimental electron density of all instances of the Ligand of Interest. In addition, ligands with molecular weight > 250 and outliers as shown on the geometry validation Tables will also be included. Each fit is shown from different orientation to approximate a three-dimensional view.

Electron density around UFW BBB 201:

2mF_o-DF_c (at 0.7 rmsd) in gray
mF_o-DF_c (at 3 rmsd) in purple (negative)
and green (positive)





6.5 Other polymers [i](#)

There are no such residues in this entry.