



Full wwPDB X-ray Structure Validation Report ⓘ

May 15, 2020 – 02:32 am BST

PDB ID : 3AM3
Title : A372M mutant of Enoyl-ACP Reductase from Plasmodium falciparum (PfENR) in complex with triclosan
Authors : Maity, K.; Banerjee, T.; Narayanappa, P.; Surolia, N.; Surolia, A.; Suguna, K.
Deposited on : 2010-08-14
Resolution : 2.50 Å(reported)

This is a Full wwPDB X-ray Structure Validation Report for a publicly released PDB entry.

We welcome your comments at validation@mail.wwpdb.org

A user guide is available at

<https://www.wwpdb.org/validation/2017/XrayValidationReportHelp>

with specific help available everywhere you see the ⓘ symbol.

The following versions of software and data (see [references ⓘ](#)) were used in the production of this report:

MolProbity	:	4.02b-467
Mogul	:	1.8.5 (274361), CSD as541be (2020)
Xtriage (Phenix)	:	1.13
EDS	:	2.11
buster-report	:	1.1.7 (2018)
Percentile statistics	:	20191225.v01 (using entries in the PDB archive December 25th 2019)
Refmac	:	5.8.0158
CCP4	:	7.0.044 (Gargrove)
Ideal geometry (proteins)	:	Engh & Huber (2001)
Ideal geometry (DNA, RNA)	:	Parkinson et al. (1996)
Validation Pipeline (wwPDB-VP)	:	2.11

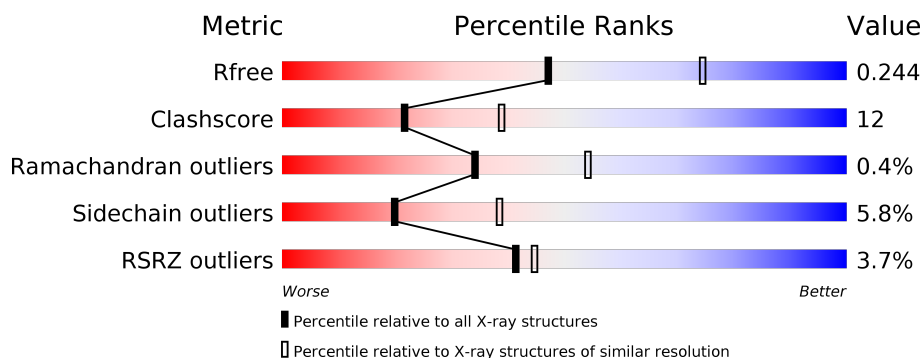
1 Overall quality at a glance

The following experimental techniques were used to determine the structure:

X-RAY DIFFRACTION

The reported resolution of this entry is 2.50 Å.

Percentile scores (ranging between 0-100) for global validation metrics of the entry are shown in the following graphic. The table shows the number of entries on which the scores are based.



Metric	Whole archive (#Entries)	Similar resolution (#Entries, resolution range(Å))
R_{free}	130704	4661 (2.50-2.50)
Clashscore	141614	5346 (2.50-2.50)
Ramachandran outliers	138981	5231 (2.50-2.50)
Sidechain outliers	138945	5233 (2.50-2.50)
RSRZ outliers	127900	4559 (2.50-2.50)

The table below summarises the geometric issues observed across the polymeric chains and their fit to the electron density. The red, orange, yellow and green segments on the lower bar indicate the fraction of residues that contain outliers for ≥ 3 , 2, 1 and 0 types of geometric quality criteria respectively. A grey segment represents the fraction of residues that are not modelled. The numeric value for each fraction is indicated below the corresponding segment, with a dot representing fractions $\leq 5\%$. The upper red bar (where present) indicates the fraction of residues that have poor fit to the electron density. The numeric value is given above the bar.

Mol	Chain	Length	Quality of chain
1	A	329	<div> <div>4%</div> <div> <div></div> <div>68%</div> <div>16%</div> <div>•</div> <div>13%</div> </div> </div>
1	B	329	<div> <div>2%</div> <div> <div></div> <div>70%</div> <div>16%</div> <div>•</div> <div>13%</div> </div> </div>

2 Entry composition [i](#)

There are 4 unique types of molecules in this entry. The entry contains 4845 atoms, of which 0 are hydrogens and 0 are deuteriums.

In the tables below, the ZeroOcc column contains the number of atoms modelled with zero occupancy, the AltConf column contains the number of residues with at least one atom in alternate conformation and the Trace column contains the number of residues modelled with at most 2 atoms.

- Molecule 1 is a protein called Enoyl-ACP reductase.

Mol	Chain	Residues	Atoms					ZeroOcc	AltConf	Trace
1	A	287	Total	C	N	O	S	0	0	0
			2189	1398	362	417	12			
1	B	287	Total	C	N	O	S	0	1	0
			2219	1415	370	422	12			

There are 2 discrepancies between the modelled and reference sequences:

Chain	Residue	Modelled	Actual	Comment	Reference
A	372	MET	ALA	ENGINEERED MUTATION	UNP Q9BJJ9
B	372	MET	ALA	ENGINEERED MUTATION	UNP Q9BJJ9

- Molecule 2 is NICOTINAMIDE-ADENINE-DINUCLEOTIDE (three-letter code: NAD) (formula: C₂₁H₂₇N₇O₁₄P₂).



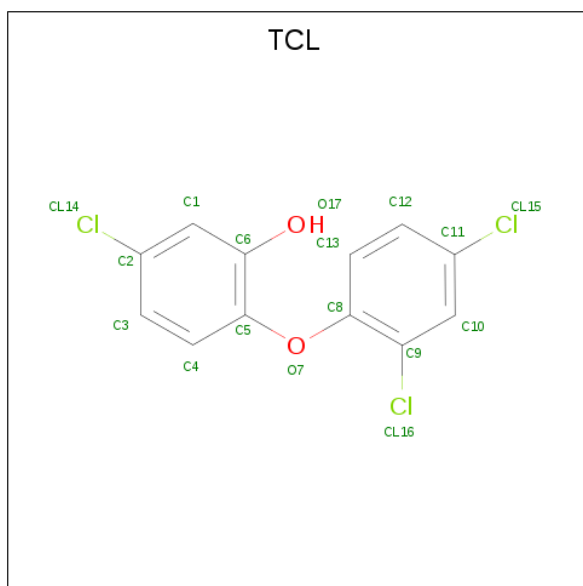
Mol	Chain	Residues	Atoms					ZeroOcc	AltConf
2	A	1	Total	C	N	O	P	0	0
			44	21	7	14	2		

Continued on next page...

Continued from previous page...

Mol	Chain	Residues	Atoms					ZeroOcc	AltConf
2	B	1	Total	C	N	O	P	0	0
			44	21	7	14	2		

- Molecule 3 is TRICLOSAN (three-letter code: TCL) (formula: $C_{12}H_7Cl_3O_2$).



Mol	Chain	Residues	Atoms				ZeroOcc	AltConf
3	A	1	Total	C	Cl	O	0	0
			17	12	3	2		
3	B	1	Total	C	Cl	O	0	0
			17	12	3	2		

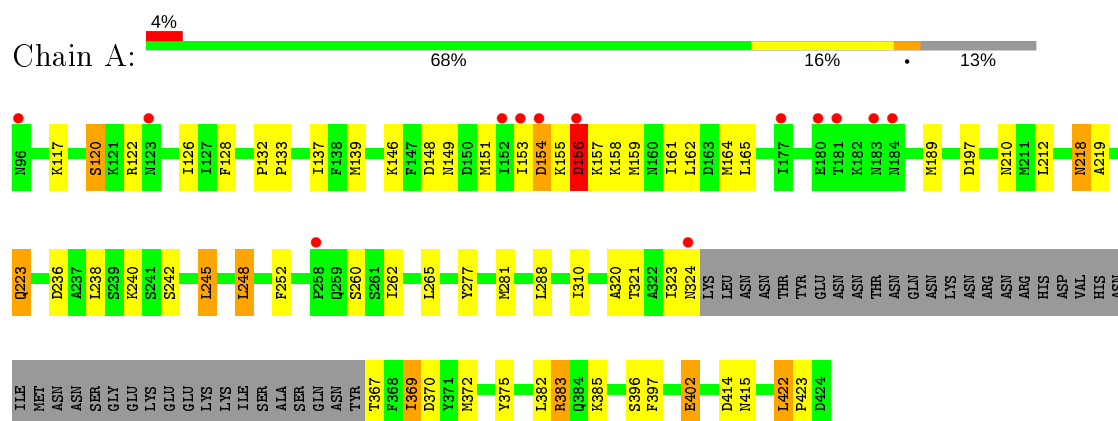
- Molecule 4 is water.

Mol	Chain	Residues	Atoms		ZeroOcc	AltConf
4	A	152	Total	O	0	0
			152	152		
4	B	163	Total	O	0	0
			163	163		

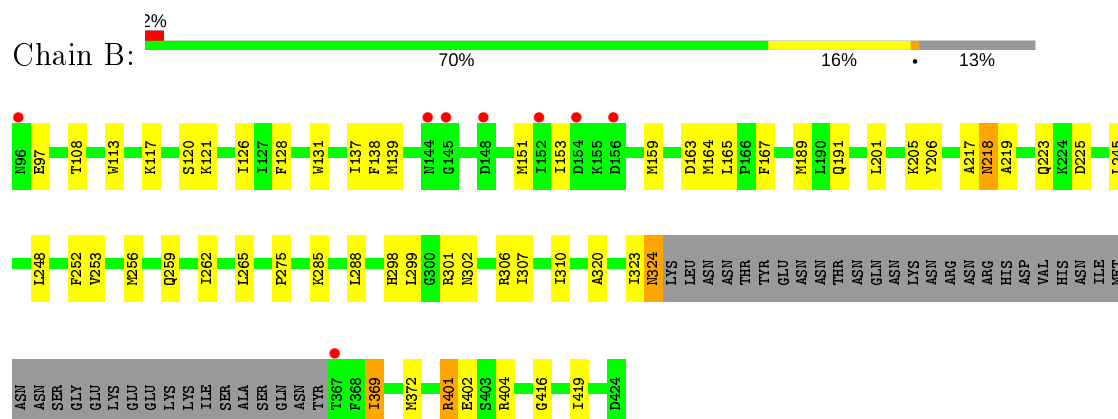
3 Residue-property plots [i](#)

These plots are drawn for all protein, RNA and DNA chains in the entry. The first graphic for a chain summarises the proportions of the various outlier classes displayed in the second graphic. The second graphic shows the sequence view annotated by issues in geometry and electron density. Residues are color-coded according to the number of geometric quality criteria for which they contain at least one outlier: green = 0, yellow = 1, orange = 2 and red = 3 or more. A red dot above a residue indicates a poor fit to the electron density ($RSRZ > 2$). Stretches of 2 or more consecutive residues without any outlier are shown as a green connector. Residues present in the sample, but not in the model, are shown in grey.

• Molecule 1: Enoyl-ACP reductase



• Molecule 1: Enoyl-ACP reductase



4 Data and refinement statistics

Property	Value	Source
Space group	P 43 21 2	Depositor
Cell constants a, b, c, α , β , γ	131.01Å 131.01Å 82.76Å 90.00° 90.00° 90.00°	Depositor
Resolution (Å)	30.86 – 2.50 30.86 – 2.50	Depositor EDS
% Data completeness (in resolution range)	100.0 (30.86-2.50) 100.0 (30.86-2.50)	Depositor EDS
R_{merge}	0.16	Depositor
R_{sym}	(Not available)	Depositor
$\langle I/\sigma(I) \rangle$ ¹	3.68 (at 2.51Å)	Xtriage
Refinement program	REFMAC 5.5.0044	Depositor
R, R_{free}	0.181 , 0.240 0.191 , 0.244	Depositor DCC
R_{free} test set	1293 reflections (5.07%)	wwPDB-VP
Wilson B-factor (Å ²)	24.9	Xtriage
Anisotropy	0.559	Xtriage
Bulk solvent k_{sol} (e/Å ³), B_{sol} (Å ²)	0.35 , 62.0	EDS
L-test for twinning ²	$\langle L \rangle = 0.48$, $\langle L^2 \rangle = 0.31$	Xtriage
Estimated twinning fraction	No twinning to report.	Xtriage
F_o, F_c correlation	0.93	EDS
Total number of atoms	4845	wwPDB-VP
Average B, all atoms (Å ²)	30.0	wwPDB-VP

Xtriage's analysis on translational NCS is as follows: *The largest off-origin peak in the Patterson function is 3.71% of the height of the origin peak. No significant pseudotranslation is detected.*

¹Intensities estimated from amplitudes.

²Theoretical values of $\langle |L| \rangle$, $\langle L^2 \rangle$ for acentric reflections are 0.5, 0.333 respectively for untwinned datasets, and 0.375, 0.2 for perfectly twinned datasets.

5 Model quality [i](#)

5.1 Standard geometry [i](#)

Bond lengths and bond angles in the following residue types are not validated in this section: TCL, NAD

The Z score for a bond length (or angle) is the number of standard deviations the observed value is removed from the expected value. A bond length (or angle) with $|Z| > 5$ is considered an outlier worth inspection. RMSZ is the root-mean-square of all Z scores of the bond lengths (or angles).

Mol	Chain	Bond lengths		Bond angles	
		RMSZ	$\# Z > 5$	RMSZ	$\# Z > 5$
1	A	0.60	0/2230	0.66	2/3022 (0.1%)
1	B	0.62	0/2260	0.68	0/3059
All	All	0.61	0/4490	0.67	2/6081 (0.0%)

There are no bond length outliers.

All (2) bond angle outliers are listed below:

Mol	Chain	Res	Type	Atoms	Z	Observed(°)	Ideal(°)
1	A	156	ASP	N-CA-C	5.60	126.12	111.00
1	A	157	LYS	N-CA-CB	5.00	119.61	110.60

There are no chirality outliers.

There are no planarity outliers.

5.2 Too-close contacts [i](#)

In the following table, the Non-H and H(model) columns list the number of non-hydrogen atoms and hydrogen atoms in the chain respectively. The H(added) column lists the number of hydrogen atoms added and optimized by MolProbity. The Clashes column lists the number of clashes within the asymmetric unit, whereas Symm-Clashes lists symmetry related clashes.

Mol	Chain	Non-H	H(model)	H(added)	Clashes	Symm-Clashes
1	A	2189	0	2128	55	0
1	B	2219	0	2171	50	0
2	A	44	0	26	1	0
2	B	44	0	26	2	0
3	A	17	0	6	0	0
3	B	17	0	6	1	0
4	A	152	0	0	8	0

Continued on next page...

Continued from previous page...

Mol	Chain	Non-H	H(model)	H(added)	Clashes	Symm-Clashes
4	B	163	0	0	10	0
All	All	4845	0	4363	106	0

The all-atom clashscore is defined as the number of clashes found per 1000 atoms (including hydrogen atoms). The all-atom clashscore for this structure is 12.

All (106) close contacts within the same asymmetric unit are listed below, sorted by their clash magnitude.

Atom-1	Atom-2	Interatomic distance (Å)	Clash overlap (Å)
1:B:225:ASP:HB3	4:B:458:HOH:O	1.42	1.16
1:A:320:ALA:HB1	1:A:369:ILE:HG13	1.33	1.10
1:B:320:ALA:HB1	1:B:369:ILE:HG13	1.42	1.01
1:A:367:THR:HG22	4:A:520:HOH:O	1.65	0.96
1:A:402:GLU:HG2	4:A:446:HOH:O	1.69	0.92
1:A:218:ASN:HD22	1:A:219:ALA:H	1.28	0.82
1:B:404:ARG:HD3	4:B:533:HOH:O	1.81	0.80
1:A:148:ASP:HA	1:A:151:MET:HE2	1.63	0.80
1:B:139:MET:SD	1:B:164:MET:HE1	2.23	0.79
1:A:323:ILE:HG22	1:A:324:ASN:H	1.48	0.76
1:B:117:LYS:HG2	1:B:159:MET:CE	2.15	0.76
1:B:117:LYS:HG2	1:B:159:MET:HE2	1.69	0.74
1:B:121:LYS:HG3	1:B:153:ILE:HG21	1.71	0.72
1:B:320:ALA:HB1	1:B:369:ILE:CG1	2.20	0.70
1:B:97:GLU:HA	4:B:513:HOH:O	1.90	0.69
1:A:117:LYS:HG2	1:A:159:MET:CE	2.23	0.67
1:B:323:ILE:O	1:B:324:ASN:HB2	1.94	0.66
1:B:302:ASN:ND2	4:B:512:HOH:O	2.30	0.65
1:A:153:ILE:O	1:A:154:ASP:HB3	1.98	0.64
1:A:154:ASP:OD1	1:A:156:ASP:N	2.30	0.64
1:A:238:LEU:O	1:A:242:SER:HB2	1.99	0.63
1:A:323:ILE:HG22	1:A:324:ASN:N	2.14	0.63
1:B:139:MET:SD	1:B:164:MET:CE	2.86	0.63
1:A:218:ASN:HD22	1:A:219:ALA:N	1.96	0.62
1:A:126:ILE:HG21	1:A:128:PHE:HE2	1.63	0.62
1:A:422:LEU:HD12	1:A:422:LEU:H	1.63	0.62
1:B:416:GLY:O	1:B:419:ILE:HG12	2.00	0.60
1:A:223:GLN:CD	1:A:223:GLN:H	2.06	0.59
1:A:126:ILE:HG21	1:A:128:PHE:CE2	2.38	0.58
1:B:320:ALA:CB	1:B:369:ILE:HG13	2.26	0.58
1:A:154:ASP:OD1	1:A:154:ASP:C	2.42	0.57
1:B:252:PHE:O	1:B:256:MET:HG3	2.06	0.56

Continued on next page...

Continued from previous page...

Atom-1	Atom-2	Interatomic distance (Å)	Clash overlap (Å)
1:B:117:LYS:HG2	1:B:159:MET:HE1	1.87	0.56
1:A:422:LEU:HD12	1:A:422:LEU:N	2.21	0.55
1:A:161:ILE:HD13	1:A:164:MET:HE2	1.88	0.55
2:B:901:NAD:O1N	2:B:901:NAD:N7N	2.39	0.55
1:A:236:ASP:O	1:A:240:LYS:HG2	2.07	0.54
1:A:382:LEU:HD11	1:B:306:ARG:HG2	1.89	0.53
1:A:132:PRO:HB2	1:A:133:PRO:HD3	1.90	0.53
1:A:117:LYS:HG2	1:A:159:MET:HE2	1.91	0.53
1:A:117:LYS:CG	1:A:159:MET:HE1	2.39	0.53
1:A:197:ASP:HA	4:A:437:HOH:O	2.09	0.52
1:B:201:LEU:HD11	1:B:205:LYS:HE3	1.92	0.52
1:A:148:ASP:HA	1:A:151:MET:CE	2.37	0.52
1:B:126:ILE:HG21	1:B:128:PHE:CE2	2.44	0.52
1:B:223:GLN:NE2	1:B:324:ASN:ND2	2.57	0.52
1:A:189:MET:HE1	4:A:486:HOH:O	2.10	0.51
1:A:320:ALA:CB	1:A:369:ILE:HG13	2.22	0.50
1:A:383:ARG:HB3	1:A:383:ARG:HH11	1.75	0.50
1:B:138:PHE:CE2	1:B:164:MET:HE3	2.47	0.50
1:B:97:GLU:CA	4:B:513:HOH:O	2.55	0.50
1:B:223:GLN:HE21	1:B:324:ASN:ND2	2.10	0.49
1:B:218:ASN:HD22	1:B:219:ALA:H	1.60	0.49
1:B:301:ARG:HD2	4:B:534:HOH:O	2.11	0.49
1:A:120:SER:HB3	1:A:153:ILE:HD11	1.94	0.49
1:A:149:ASN:HB2	4:A:36:HOH:O	2.12	0.49
1:B:121:LYS:CG	1:B:153:ILE:HG21	2.42	0.49
1:B:97:GLU:N	4:B:513:HOH:O	2.45	0.49
1:B:126:ILE:HG21	1:B:128:PHE:HE2	1.78	0.48
1:B:117:LYS:CG	1:B:159:MET:HE1	2.44	0.48
1:B:217:ALA:HB3	3:B:902:TCL:CL16	2.50	0.48
1:A:245:LEU:HD12	1:A:288:LEU:HD12	1.95	0.48
1:B:323:ILE:O	1:B:323:ILE:HG22	2.13	0.48
1:B:138:PHE:HE2	1:B:164:MET:HE3	1.79	0.48
2:A:801:NAD:H2N	2:A:801:NAD:O1N	2.14	0.48
1:B:163:ASP:OD2	1:B:206:TYR:OH	2.27	0.47
1:A:126:ILE:CG2	1:A:128:PHE:CE2	2.97	0.47
1:B:151:MET:HA	1:B:159:MET:HE3	1.97	0.47
1:A:117:LYS:HG3	1:A:159:MET:HE1	1.96	0.46
1:A:375:TYR:OH	1:A:423:PRO:HD3	2.15	0.46
1:B:265:LEU:HD23	1:B:310:ILE:HB	1.98	0.46
1:A:212:LEU:HB3	1:A:262:ILE:HG12	1.98	0.46
1:B:108:THR:HG22	1:B:113:TRP:CE3	2.50	0.46

Continued on next page...

Continued from previous page...

Atom-1	Atom-2	Interatomic distance (Å)	Clash overlap (Å)
1:A:117:LYS:CG	1:A:159:MET:CE	2.93	0.46
1:B:253:VAL:HG11	1:B:299:LEU:HD22	1.98	0.46
1:A:154:ASP:O	1:A:155:LYS:C	2.54	0.45
1:A:265:LEU:HD23	1:A:310:ILE:HB	1.98	0.45
1:B:288:LEU:HA	4:B:19:HOH:O	2.17	0.45
1:A:161:ILE:HD13	1:A:164:MET:CE	2.46	0.45
1:A:165:LEU:HB3	4:A:9:HOH:O	2.15	0.45
1:B:275:PRO:HA	4:B:506:HOH:O	2.17	0.45
1:A:367:THR:HB	1:A:370:ASP:OD2	2.17	0.44
1:A:122:ARG:HD3	1:A:396:SER:OG	2.18	0.44
1:A:248:LEU:HA	1:A:248:LEU:HD23	1.84	0.43
1:A:122:ARG:NH2	1:B:402[B]:GLU:OE1	2.42	0.43
1:B:248:LEU:O	1:B:252:PHE:HB2	2.18	0.43
1:A:164:MET:HB2	4:A:427:HOH:O	2.17	0.43
1:B:259:GLN:HE21	1:B:401:ARG:NH1	2.16	0.43
1:A:383:ARG:NH2	4:A:430:HOH:O	2.52	0.43
1:A:210:ASN:HA	1:A:260:SER:OG	2.19	0.43
1:B:298:HIS:HB3	4:B:512:HOH:O	2.17	0.43
1:A:146:LYS:HG2	1:A:146:LYS:O	2.18	0.43
1:A:161:ILE:HG21	1:A:164:MET:HE2	2.01	0.43
1:A:414:ASP:O	1:A:415:ASN:HB2	2.18	0.43
1:B:253:VAL:HG11	1:B:299:LEU:CD2	2.49	0.43
1:B:138:PHE:HE2	1:B:164:MET:CE	2.33	0.42
2:B:901:NAD:O2N	2:B:901:NAD:O2A	2.38	0.42
1:B:126:ILE:CG2	1:B:128:PHE:CE2	3.02	0.42
1:A:248:LEU:O	1:A:252:PHE:HB2	2.20	0.41
1:A:320:ALA:HB1	1:A:369:ILE:CG1	2.24	0.41
1:B:262:ILE:O	1:B:307:ILE:HA	2.20	0.41
1:B:223:GLN:HG2	1:B:324:ASN:HD22	1.85	0.41
1:B:285:LYS:HA	1:B:285:LYS:HD3	1.92	0.41
1:A:397:PHE:CE1	1:A:402:GLU:HB3	2.57	0.40
1:B:131:TRP:HA	1:B:167:PHE:O	2.22	0.40
1:A:277:TYR:CE2	1:A:281:MET:HB3	2.57	0.40

There are no symmetry-related clashes.

5.3 Torsion angles

5.3.1 Protein backbone

In the following table, the Percentiles column shows the percent Ramachandran outliers of the chain as a percentile score with respect to all X-ray entries followed by that with respect to entries of similar resolution.

The Analysed column shows the number of residues for which the backbone conformation was analysed, and the total number of residues.

Mol	Chain	Analysed	Favoured	Allowed	Outliers	Percentiles	
1	A	283/329 (86%)	269 (95%)	12 (4%)	2 (1%)	22	39
1	B	284/329 (86%)	267 (94%)	17 (6%)	0	100	100
All	All	567/658 (86%)	536 (94%)	29 (5%)	2 (0%)	34	54

All (2) Ramachandran outliers are listed below:

Mol	Chain	Res	Type
1	A	154	ASP
1	A	156	ASP

5.3.2 Protein sidechains

In the following table, the Percentiles column shows the percent sidechain outliers of the chain as a percentile score with respect to all X-ray entries followed by that with respect to entries of similar resolution.

The Analysed column shows the number of residues for which the sidechain conformation was analysed, and the total number of residues.

Mol	Chain	Analysed	Rotameric	Outliers	Percentiles	
1	A	230/289 (80%)	214 (93%)	16 (7%)	15	29
1	B	235/289 (81%)	224 (95%)	11 (5%)	26	49
All	All	465/578 (80%)	438 (94%)	27 (6%)	20	38

All (27) residues with a non-rotameric sidechain are listed below:

Mol	Chain	Res	Type
1	A	120	SER
1	A	137	ILE
1	A	139	MET
1	A	158	LYS

Continued on next page...

Continued from previous page...

Mol	Chain	Res	Type
1	A	162	LEU
1	A	218	ASN
1	A	223	GLN
1	A	245	LEU
1	A	248	LEU
1	A	321	THR
1	A	369	ILE
1	A	372	MET
1	A	383	ARG
1	A	385	LYS
1	A	402	GLU
1	A	422	LEU
1	B	120	SER
1	B	137	ILE
1	B	165	LEU
1	B	189	MET
1	B	191	GLN
1	B	218	ASN
1	B	245	LEU
1	B	324	ASN
1	B	369	ILE
1	B	372	MET
1	B	401	ARG

Some sidechains can be flipped to improve hydrogen bonding and reduce clashes. All (10) such sidechains are listed below:

Mol	Chain	Res	Type
1	A	144	ASN
1	A	218	ASN
1	B	191	GLN
1	B	200	ASN
1	B	218	ASN
1	B	223	GLN
1	B	228	ASN
1	B	259	GLN
1	B	304	ASN
1	B	324	ASN

5.3.3 RNA ⓘ

There are no RNA molecules in this entry.

5.4 Non-standard residues in protein, DNA, RNA chains ⓘ

There are no non-standard protein/DNA/RNA residues in this entry.

5.5 Carbohydrates ⓘ

There are no carbohydrates in this entry.

5.6 Ligand geometry ⓘ

4 ligands are modelled in this entry.

In the following table, the Counts columns list the number of bonds (or angles) for which Mogul statistics could be retrieved, the number of bonds (or angles) that are observed in the model and the number of bonds (or angles) that are defined in the Chemical Component Dictionary. The Link column lists molecule types, if any, to which the group is linked. The Z score for a bond length (or angle) is the number of standard deviations the observed value is removed from the expected value. A bond length (or angle) with $|Z| > 2$ is considered an outlier worth inspection. RMSZ is the root-mean-square of all Z scores of the bond lengths (or angles).

Mol	Type	Chain	Res	Link	Bond lengths			Bond angles		
					Counts	RMSZ	# $ Z > 2$	Counts	RMSZ	# $ Z > 2$
2	NAD	A	801	-	42,48,48	1.43	2 (4%)	50,73,73	1.66	5 (10%)
3	TCL	A	802	-	18,18,18	0.98	2 (11%)	25,25,25	0.86	1 (4%)
2	NAD	B	901	-	42,48,48	1.42	2 (4%)	50,73,73	1.60	4 (8%)
3	TCL	B	902	-	18,18,18	1.17	3 (16%)	25,25,25	0.75	1 (4%)

In the following table, the Chirals column lists the number of chiral outliers, the number of chiral centers analysed, the number of these observed in the model and the number defined in the Chemical Component Dictionary. Similar counts are reported in the Torsion and Rings columns. '-' means no outliers of that kind were identified.

Mol	Type	Chain	Res	Link	Chirals	Torsions	Rings
2	NAD	A	801	-	-	10/26/62/62	0/5/5/5
3	TCL	A	802	-	-	0/4/4/4	0/2/2/2
2	NAD	B	901	-	-	8/26/62/62	0/5/5/5
3	TCL	B	902	-	-	0/4/4/4	0/2/2/2

All (9) bond length outliers are listed below:

Mol	Chain	Res	Type	Atoms	Z	Observed(Å)	Ideal(Å)
2	A	801	NAD	C4N-C3N	7.17	1.51	1.39

Continued on next page...

Continued from previous page...

Mol	Chain	Res	Type	Atoms	Z	Observed(Å)	Ideal(Å)
2	B	901	NAD	C4N-C3N	7.08	1.51	1.39
2	B	901	NAD	C5N-C4N	3.33	1.45	1.38
2	A	801	NAD	C5N-C4N	3.18	1.45	1.38
3	B	902	TCL	C9-CL16	2.65	1.79	1.73
3	B	902	TCL	C11-CL15	2.49	1.79	1.74
3	B	902	TCL	C2-CL14	2.48	1.79	1.74
3	A	802	TCL	C9-CL16	2.32	1.79	1.73
3	A	802	TCL	C2-CL14	2.17	1.79	1.74

All (11) bond angle outliers are listed below:

Mol	Chain	Res	Type	Atoms	Z	Observed(°)	Ideal(°)
2	B	901	NAD	C5N-C4N-C3N	-7.32	111.68	120.34
2	A	801	NAD	C5N-C4N-C3N	-7.28	111.73	120.34
2	A	801	NAD	N3A-C2A-N1A	-4.46	121.71	128.68
2	B	901	NAD	N3A-C2A-N1A	-3.78	122.77	128.68
2	A	801	NAD	PN-O3-PA	-3.10	122.19	132.83
2	B	901	NAD	C2N-C3N-C4N	3.10	121.77	118.26
2	A	801	NAD	C2N-C3N-C4N	2.96	121.61	118.26
2	B	901	NAD	PN-O3-PA	-2.92	122.79	132.83
2	A	801	NAD	C4A-C5A-N7A	-2.12	107.19	109.40
3	A	802	TCL	C8-C9-CL16	2.05	121.84	119.43
3	B	902	TCL	O7-C5-C6	2.00	119.96	116.22

There are no chirality outliers.

All (18) torsion outliers are listed below:

Mol	Chain	Res	Type	Atoms
2	A	801	NAD	C5B-O5B-PA-O1A
2	A	801	NAD	PN-O3-PA-O5B
2	A	801	NAD	C5D-O5D-PN-O3
2	A	801	NAD	O4D-C1D-N1N-C2N
2	B	901	NAD	C5D-O5D-PN-O1N
2	B	901	NAD	C5D-O5D-PN-O2N
2	A	801	NAD	O4B-C4B-C5B-O5B
2	B	901	NAD	O4B-C4B-C5B-O5B
2	A	801	NAD	C3B-C4B-C5B-O5B
2	B	901	NAD	C3B-C4B-C5B-O5B
2	B	901	NAD	PN-O3-PA-O1A
2	A	801	NAD	C5D-O5D-PN-O1N
2	B	901	NAD	PN-O3-PA-O2A
2	A	801	NAD	C4B-C5B-O5B-PA

Continued on next page...

Continued from previous page...

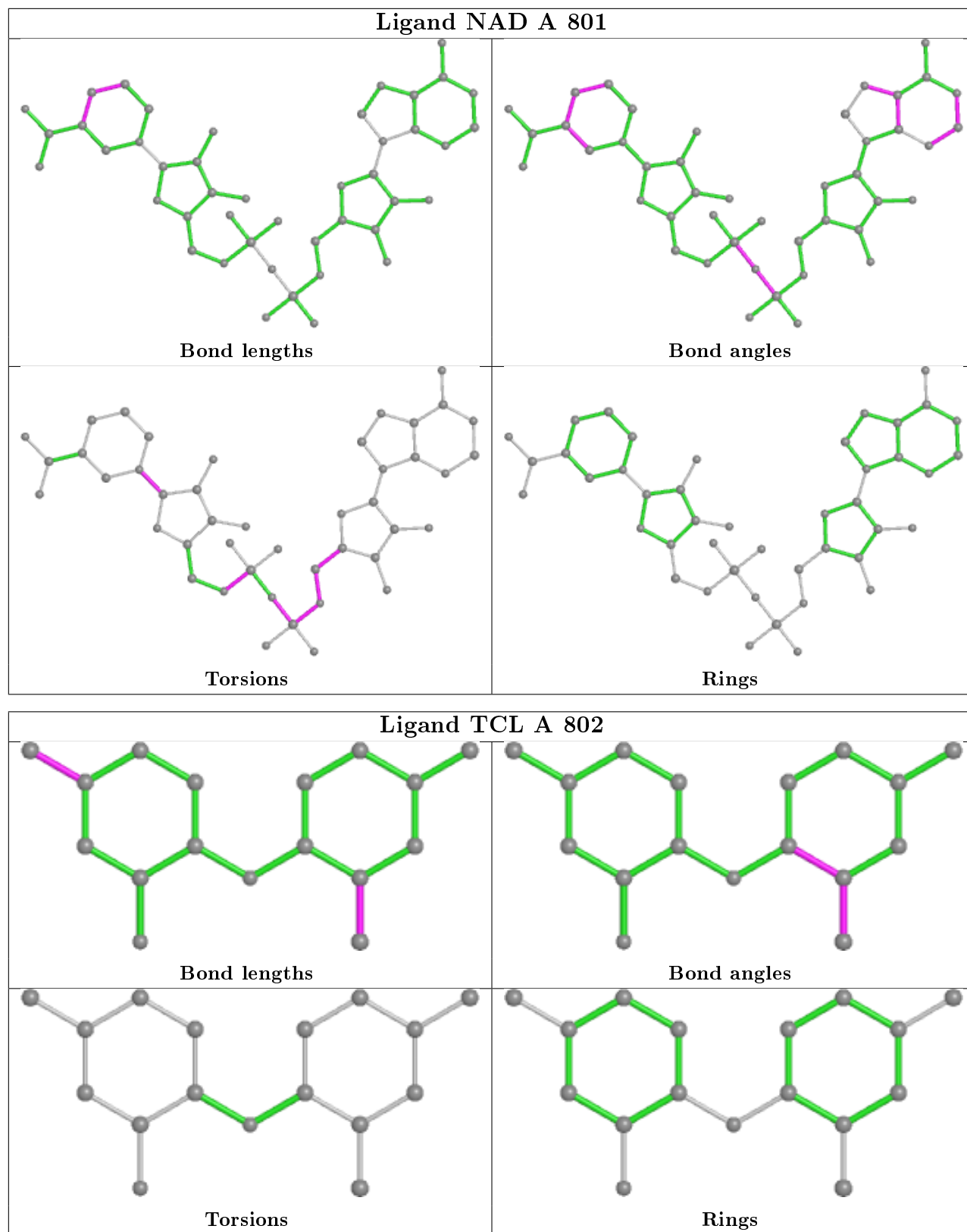
Mol	Chain	Res	Type	Atoms
2	A	801	NAD	C5B-O5B-PA-O3
2	B	901	NAD	C5D-O5D-PN-O3
2	B	901	NAD	C4B-C5B-O5B-PA
2	A	801	NAD	C5B-O5B-PA-O2A

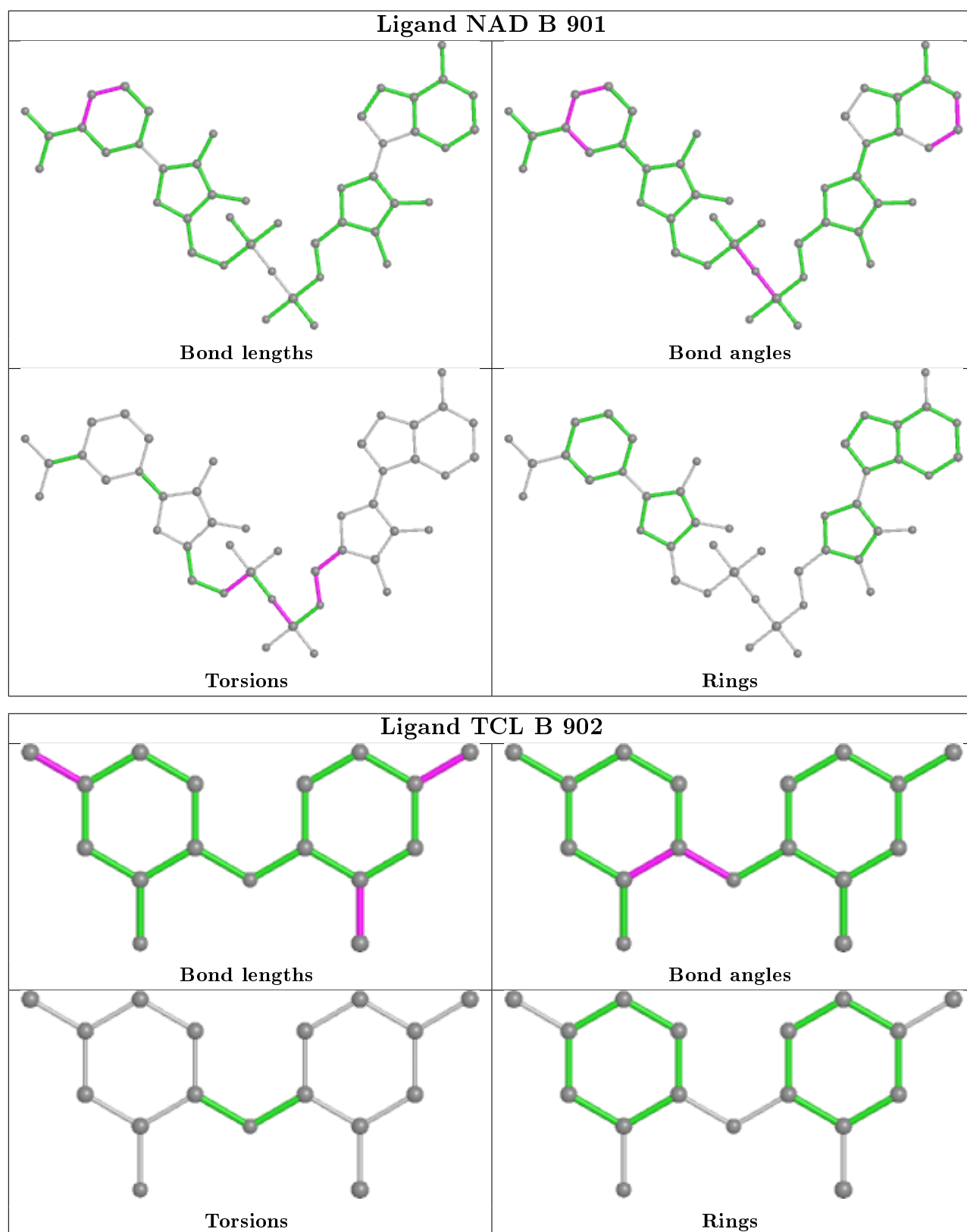
There are no ring outliers.

3 monomers are involved in 4 short contacts:

Mol	Chain	Res	Type	Clashes	Symm-Clashes
2	A	801	NAD	1	0
2	B	901	NAD	2	0
3	B	902	TCL	1	0

The following is a two-dimensional graphical depiction of Mogul quality analysis of bond lengths, bond angles, torsion angles, and ring geometry for all instances of the Ligand of Interest. In addition, ligands with molecular weight > 250 and outliers as shown on the validation Tables will also be included. For torsion angles, if less than 5% of the Mogul distribution of torsion angles is within 10 degrees of the torsion angle in question, then that torsion angle is considered an outlier. Any bond that is central to one or more torsion angles identified as an outlier by Mogul will be highlighted in the graph. For rings, the root-mean-square deviation (RMSD) between the ring in question and similar rings identified by Mogul is calculated over all ring torsion angles. If the average RMSD is greater than 60 degrees and the minimal RMSD between the ring in question and any Mogul-identified rings is also greater than 60 degrees, then that ring is considered an outlier. The outliers are highlighted in purple. The color gray indicates Mogul did not find sufficient equivalents in the CSD to analyse the geometry.





5.7 Other polymers [i](#)

There are no such residues in this entry.

5.8 Polymer linkage issues ⓘ

There are no chain breaks in this entry.

6 Fit of model and data

6.1 Protein, DNA and RNA chains

In the following table, the column labelled ‘#RSRZ> 2’ contains the number (and percentage) of RSRZ outliers, followed by percent RSRZ outliers for the chain as percentile scores relative to all X-ray entries and entries of similar resolution. The OWAB column contains the minimum, median, 95th percentile and maximum values of the occupancy-weighted average B-factor per residue. The column labelled ‘Q< 0.9’ lists the number of (and percentage) of residues with an average occupancy less than 0.9.

Mol	Chain	Analysed	<RSRZ>	#RSRZ>2	OWAB(Å ²)	Q<0.9
1	A	287/329 (87%)	-0.20	13 (4%) 33 36	13, 26, 54, 63	11 (3%)
1	B	287/329 (87%)	-0.24	8 (2%) 53 56	15, 27, 49, 63	9 (3%)
All	All	574/658 (87%)	-0.22	21 (3%) 41 45	13, 27, 52, 63	20 (3%)

All (21) RSRZ outliers are listed below:

Mol	Chain	Res	Type	RSRZ
1	A	156	ASP	4.5
1	A	183	ASN	4.0
1	B	156	ASP	3.9
1	A	184	ASN	3.6
1	A	324	ASN	3.5
1	B	154	ASP	3.4
1	B	152	ILE	3.3
1	A	154	ASP	3.2
1	B	144	ASN	3.0
1	A	96	ASN	2.6
1	A	180	GLU	2.6
1	A	123	ASN	2.5
1	B	367	THR	2.3
1	A	177	ILE	2.2
1	A	153	ILE	2.2
1	A	152	ILE	2.2
1	B	96	ASN	2.2
1	A	181	THR	2.1
1	B	148	ASP	2.1
1	A	258	PRO	2.0
1	B	145	GLY	2.0

6.2 Non-standard residues in protein, DNA, RNA chains [i](#)

There are no non-standard protein/DNA/RNA residues in this entry.

6.3 Carbohydrates [i](#)

There are no carbohydrates in this entry.

6.4 Ligands [i](#)

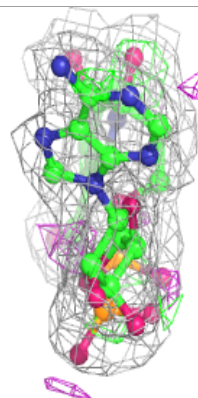
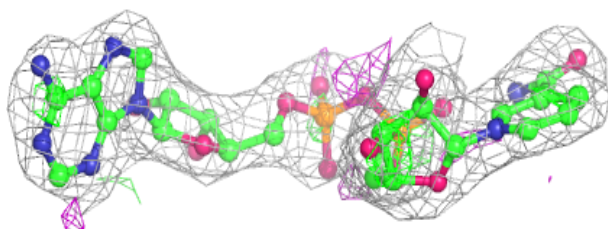
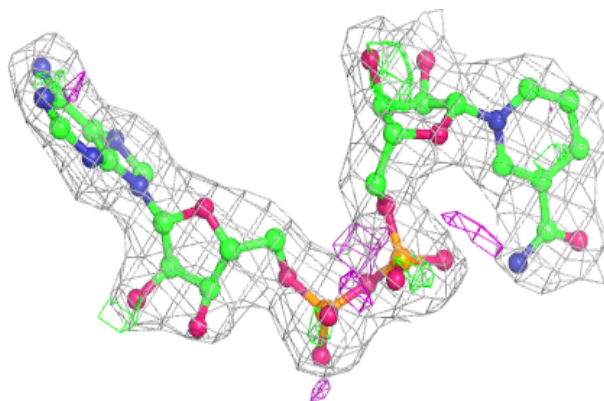
In the following table, the Atoms column lists the number of modelled atoms in the group and the number defined in the chemical component dictionary. The B-factors column lists the minimum, median, 95th percentile and maximum values of B factors of atoms in the group. The column labelled 'Q< 0.9' lists the number of atoms with occupancy less than 0.9.

Mol	Type	Chain	Res	Atoms	RSCC	RSR	B-factors(\AA^2)	Q<0.9
2	NAD	B	901	44/44	0.94	0.22	40,47,51,52	0
3	TCL	B	902	17/17	0.94	0.17	44,48,52,52	0
2	NAD	A	801	44/44	0.96	0.18	35,45,50,52	0
3	TCL	A	802	17/17	0.96	0.17	46,48,49,50	0

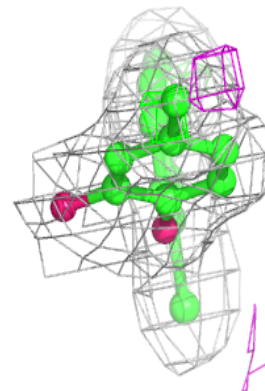
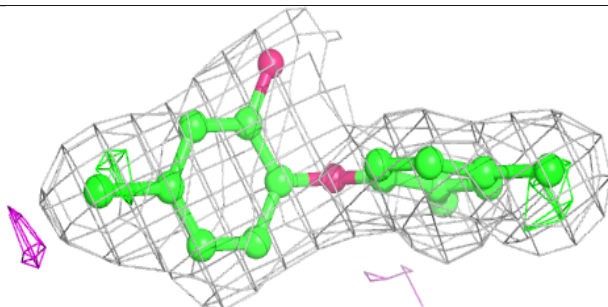
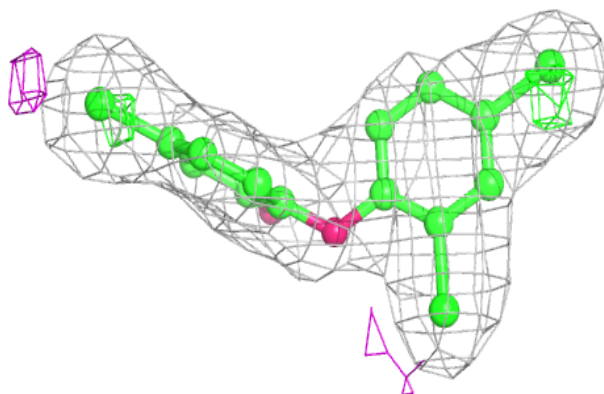
The following is a graphical depiction of the model fit to experimental electron density of all instances of the Ligand of Interest. In addition, ligands with molecular weight > 250 and outliers as shown on the geometry validation Tables will also be included. Each fit is shown from different orientation to approximate a three-dimensional view.

Electron density around NAD B 901:

$2mF_o-DF_c$ (at 0.7 rmsd) in gray
 mF_o-DF_c (at 3 rmsd) in purple (negative)
and green (positive)

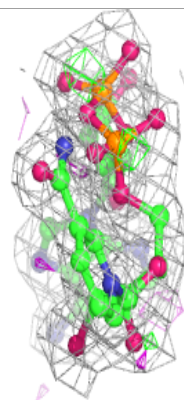
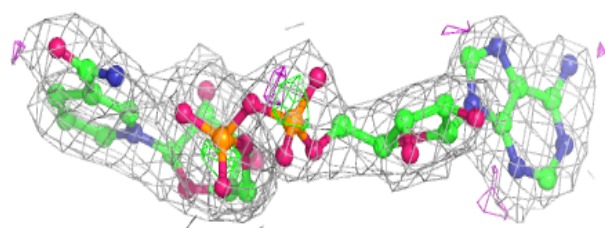
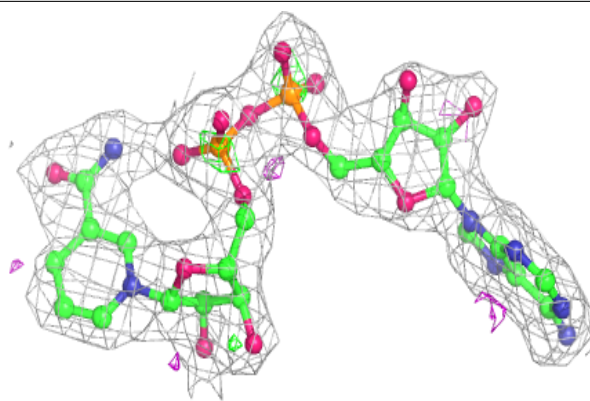
**Electron density around TCL B 902:**

$2mF_o-DF_c$ (at 0.7 rmsd) in gray
 mF_o-DF_c (at 3 rmsd) in purple (negative)
and green (positive)

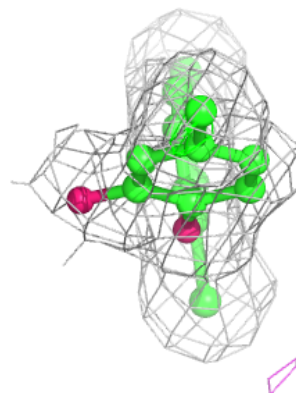
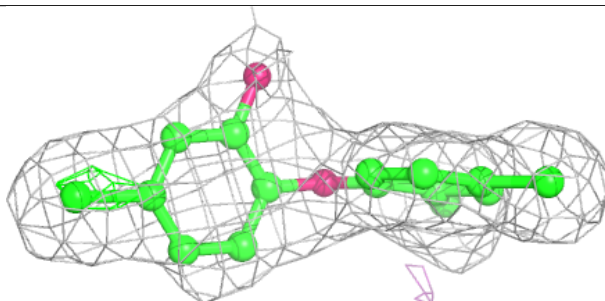
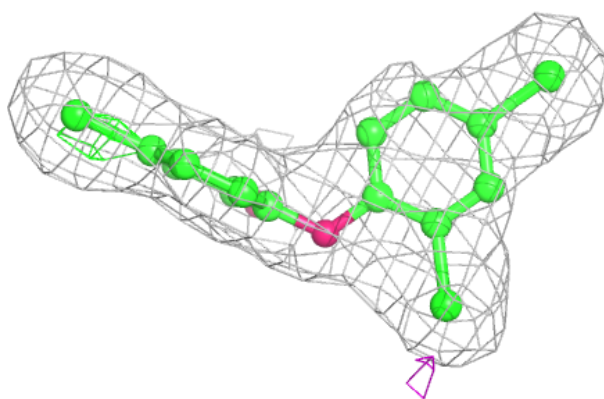


Electron density around NAD A 801:

$2mF_o-DF_c$ (at 0.7 rmsd) in gray
 mF_o-DF_c (at 3 rmsd) in purple (negative)
and green (positive)

**Electron density around TCL A 802:**

$2mF_o-DF_c$ (at 0.7 rmsd) in gray
 mF_o-DF_c (at 3 rmsd) in purple (negative)
and green (positive)



6.5 Other polymers

There are no such residues in this entry.