



wwPDB X-ray Structure Validation Summary Report ⓘ

Jun 14, 2020 – 09:33 pm BST

PDB ID : 3AM9
Title : Complex of bovine xanthine dehydrogenase and trihydroxy FYX-051
Authors : Matsumoto, K.; Okamoto, K.; Ashizawa, N.; Matsumura, T.; Kusano, T.; Nishino, T.
Deposited on : 2010-08-18
Resolution : 2.17 Å(reported)

This is a wwPDB X-ray Structure Validation Summary Report for a publicly released PDB entry.

We welcome your comments at validation@mail.wwpdb.org

A user guide is available at

<https://www.wwpdb.org/validation/2017/XrayValidationReportHelp>

with specific help available everywhere you see the ⓘ symbol.

The following versions of software and data (see [references ⓘ](#)) were used in the production of this report:

MolProbity : 4.02b-467
Mogul : 1.8.5 (274361), CSD as541be (2020)
Xtriage (Phenix) : 1.13
EDS : 2.11
buster-report : 1.1.7 (2018)
Percentile statistics : 20191225.v01 (using entries in the PDB archive December 25th 2019)
Refmac : 5.8.0158
CCP4 : 7.0.044 (Gargrove)
Ideal geometry (proteins) : Engh & Huber (2001)
Ideal geometry (DNA, RNA) : Parkinson et al. (1996)
Validation Pipeline (wwPDB-VP) : 2.11

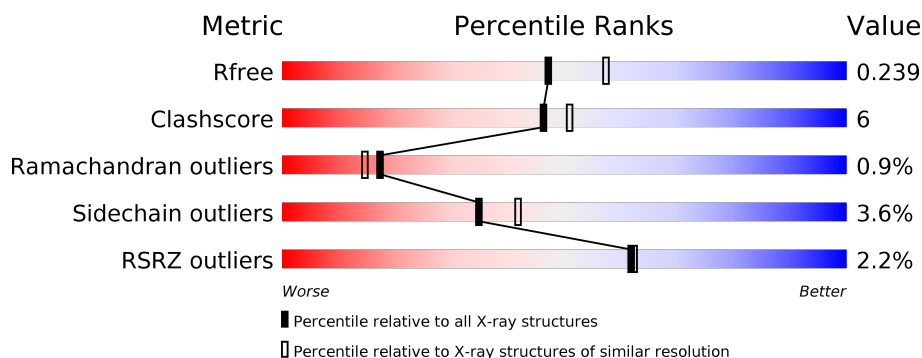
1 Overall quality at a glance ⓘ

The following experimental techniques were used to determine the structure:

X-RAY DIFFRACTION

The reported resolution of this entry is 2.17 Å.

Percentile scores (ranging between 0-100) for global validation metrics of the entry are shown in the following graphic. The table shows the number of entries on which the scores are based.



Metric	Whole archive (#Entries)	Similar resolution (#Entries, resolution range(Å))
R_{free}	130704	6864 (2.20-2.16)
Clashscore	141614	7689 (2.20-2.16)
Ramachandran outliers	138981	7564 (2.20-2.16)
Sidechain outliers	138945	7564 (2.20-2.16)
RSRZ outliers	127900	6738 (2.20-2.16)

The table below summarises the geometric issues observed across the polymeric chains and their fit to the electron density. The red, orange, yellow and green segments on the lower bar indicate the fraction of residues that contain outliers for ≥ 3 , 2, 1 and 0 types of geometric quality criteria respectively. A grey segment represents the fraction of residues that are not modelled. The numeric value for each fraction is indicated below the corresponding segment, with a dot representing fractions $\leq 5\%$. The upper red bar (where present) indicates the fraction of residues that have poor fit to the electron density. The numeric value is given above the bar.

Mol	Chain	Length	Quality of chain
1	A	1332	<div> <div>2%</div> <div> <div></div> <div>83%</div> <div>13%</div> <div>••</div> </div> </div>
1	B	1332	<div> <div>2%</div> <div> <div></div> <div>82%</div> <div>14%</div> <div>••</div> </div> </div>

2 Entry composition [i](#)

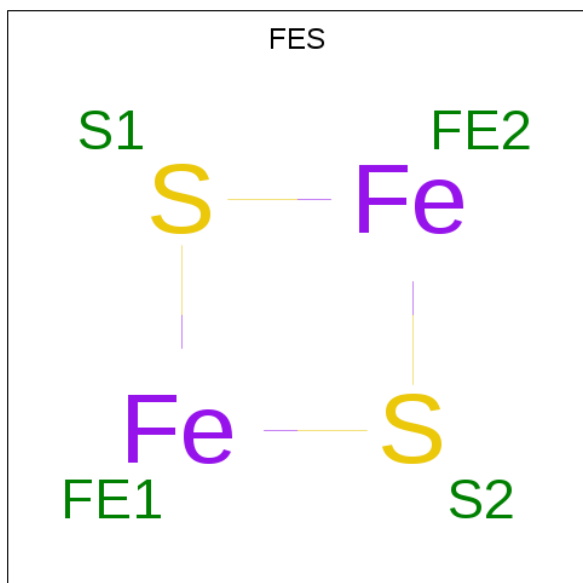
There are 10 unique types of molecules in this entry. The entry contains 22226 atoms, of which 0 are hydrogens and 0 are deuteriums.

In the tables below, the ZeroOcc column contains the number of atoms modelled with zero occupancy, the AltConf column contains the number of residues with at least one atom in alternate conformation and the Trace column contains the number of residues modelled with at most 2 atoms.

- Molecule 1 is a protein called Xanthine dehydrogenase/oxidase.

Mol	Chain	Residues	Atoms					ZeroOcc	AltConf	Trace
1	A	1293	Total	C	N	O	S	0	0	0
			10041	6384	1721	1876	60			
1	B	1291	Total	C	N	O	S	0	0	0
			10027	6375	1719	1872	61			

- Molecule 2 is FE2/S2 (INORGANIC) CLUSTER (three-letter code: FES) (formula: Fe_2S_2).

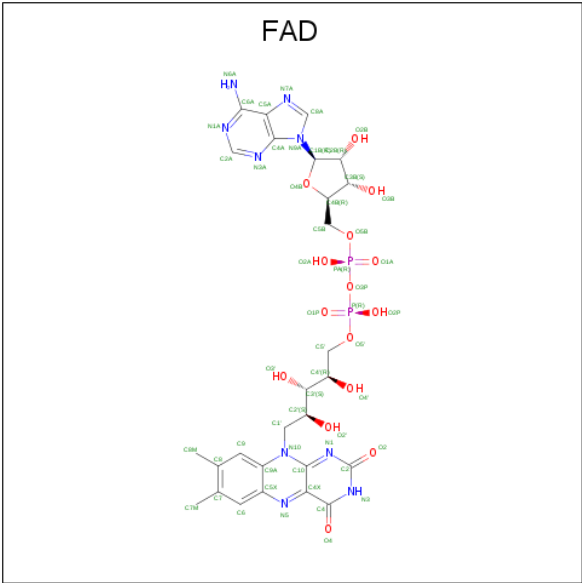


Mol	Chain	Residues	Atoms			ZeroOcc	AltConf
2	A	1	Total	Fe	S	0	0
			4	2	2		
2	A	1	Total	Fe	S	0	0
			4	2	2		
2	B	1	Total	Fe	S	0	0
			4	2	2		
2	B	1	Total	Fe	S	0	0
			4	2	2		

- Molecule 3 is CALCIUM ION (three-letter code: CA) (formula: Ca).

Mol	Chain	Residues	Atoms		ZeroOcc	AltConf
3	B	2	Total	Ca	0	0
			2	2		
3	A	2	Total	Ca	0	0
			2	2		

- Molecule 4 is FLAVIN-ADENINE DINUCLEOTIDE (three-letter code: FAD) (formula: C₂₇H₃₃N₉O₁₅P₂).



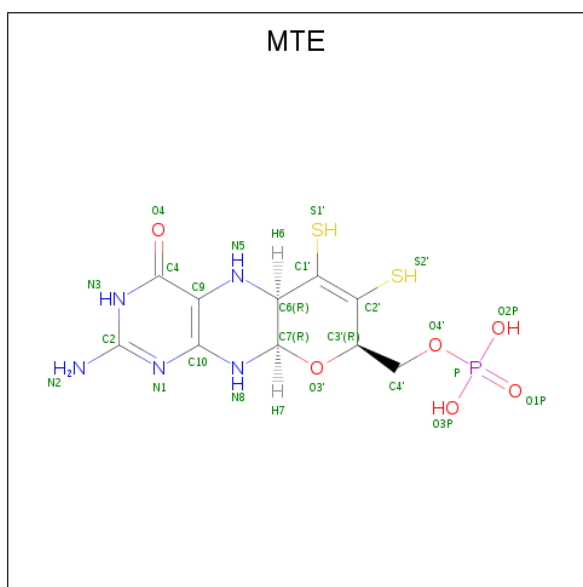
Mol	Chain	Residues	Atoms					ZeroOcc	AltConf
4	A	1	Total 53	C 27	N 9	O 15	P 2	0	0
4	B	1	Total 53	C 27	N 9	O 15	P 2	0	0

- Molecule 5 is BICARBONATE ION (three-letter code: BCT) (formula: CHO₃).



Mol	Chain	Residues	Atoms			ZeroOcc	AltConf
5	A	1	Total	C	O	0	0
			4	1	3		
5	B	1	Total	C	O	0	0
			4	1	3		

- Molecule 6 is PHOSPHONIC ACIDMONO-(2-AMINO-5,6-DIMERCAPTO-4-OXO-3,7,8A, 9,10,10A-HEXAHYDRO-4H-8-OXA-1,3,9,10-TETRAAZA-ANTHRACEN-7-YLMETHYL) ESTER (three-letter code: MTE) (formula: $C_{10}H_{14}N_5O_6P_2S_2$).



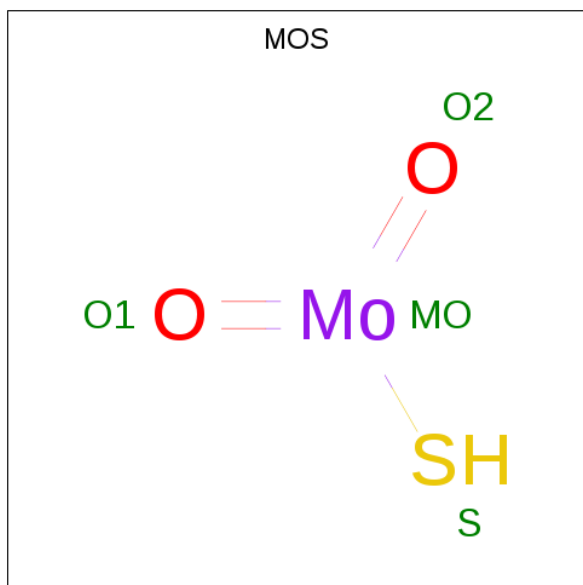
Mol	Chain	Residues	Atoms						ZeroOcc	AltConf
6	A	1	Total	C	N	O	P	S	0	0
			24	10	5	6	1	2		

Continued on next page...

Continued from previous page...

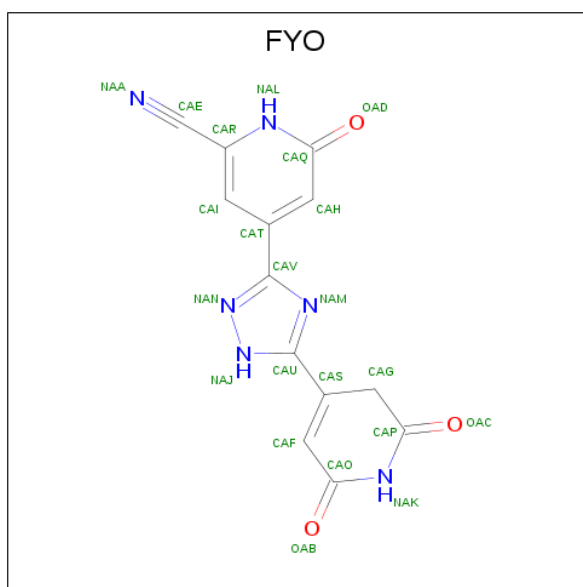
Mol	Chain	Residues	Atoms						ZeroOcc	AltConf
6	B	1	Total	C	N	O	P	S	0	0
			24	10	5	6	1	2		

- Molecule 7 is DIOXOTHIOMOLYBDENUM(VI) ION (three-letter code: MOS) (formula: HMoO_2S).



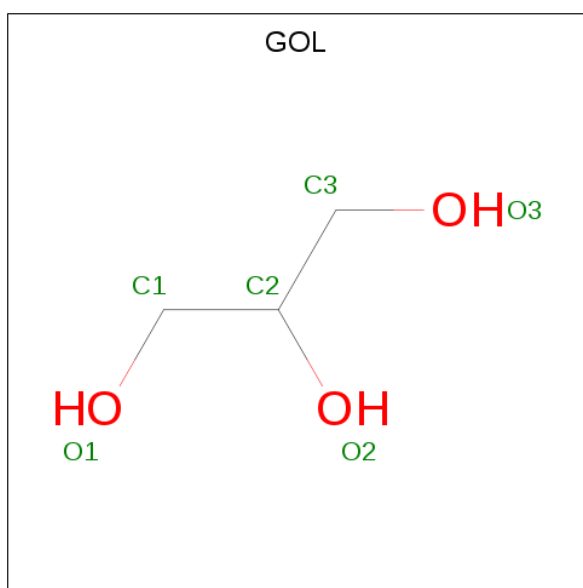
Mol	Chain	Residues	Atoms				ZeroOcc	AltConf
7	A	1	Total	Mo	O	S	0	0
			3	1	1	1		
7	B	1	Total	Mo	O	S	0	0
			3	1	1	1		

- Molecule 8 is 4-[5-(2,6-dioxo-1,2,3,6-tetrahydropyridin-4-yl)-1H-1,2,4-triazol-3-yl]-6-oxo-1,6-dihydropyridine-2-carbonitrile (three-letter code: FYO) (formula: $\text{C}_{13}\text{H}_8\text{N}_6\text{O}_3$).



Mol	Chain	Residues	Atoms				ZeroOcc	AltConf
8	A	1	Total	C	N	O	0	0
			22	13	6	3		
8	B	1	Total	C	N	O	0	0
			22	13	6	3		

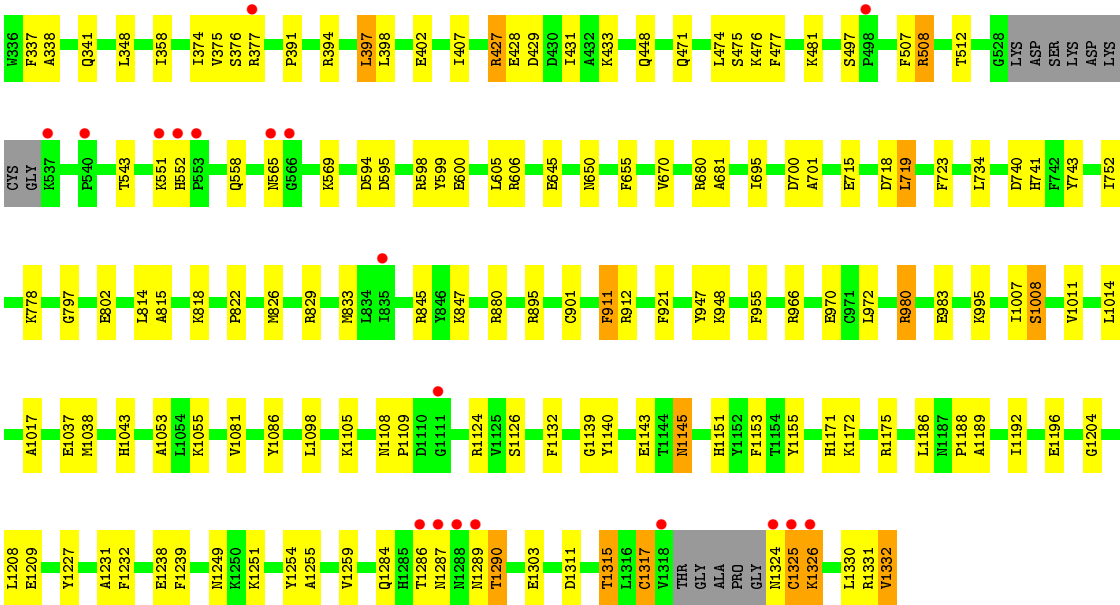
- Molecule 9 is GLYCEROL (three-letter code: GOL) (formula: $C_3H_8O_3$).



Mol	Chain	Residues	Atoms			ZeroOcc	AltConf
9	B	1	Total	C	O	0	0
			6	3	3		
9	B	1	Total	C	O	0	0
			6	3	3		

- Molecule 10 is water.

Mol	Chain	Residues	Atoms		ZeroOcc	AltConf
10	A	973	Total 973	O 973	0	0
10	B	941	Total 941	O 941	0	0



4 Data and refinement statistics

Property	Value	Source
Space group	C 1 2 1	Depositor
Cell constants a, b, c, α , β , γ	168.92Å 124.72Å 146.19Å 90.00° 91.04° 90.00°	Depositor
Resolution (Å)	33.44 – 2.17 33.44 – 2.17	Depositor EDS
% Data completeness (in resolution range)	95.5 (33.44-2.17) 95.5 (33.44-2.17)	Depositor EDS
R_{merge}	0.08	Depositor
R_{sym}	(Not available)	Depositor
$\langle I/\sigma(I) \rangle$ ¹	3.92 (at 2.18Å)	Xtriage
Refinement program	REFMAC 5.5.0109	Depositor
R, R_{free}	0.174 , 0.243 0.171 , 0.239	Depositor DCC
R_{free} test set	7582 reflections (4.99%)	wwPDB-VP
Wilson B-factor (Å ²)	26.8	Xtriage
Anisotropy	0.126	Xtriage
Bulk solvent k_{sol} (e/Å ³), B_{sol} (Å ²)	0.35 , 41.5	EDS
L-test for twinning ²	$\langle L \rangle = 0.50$, $\langle L^2 \rangle = 0.33$	Xtriage
Estimated twinning fraction	0.027 for -h,-k,l	Xtriage
F_o, F_c correlation	0.96	EDS
Total number of atoms	22226	wwPDB-VP
Average B, all atoms (Å ²)	28.0	wwPDB-VP

Xtriage's analysis on translational NCS is as follows: *The largest off-origin peak in the Patterson function is 3.04% of the height of the origin peak. No significant pseudotranslation is detected.*

¹Intensities estimated from amplitudes.

²Theoretical values of $\langle |L| \rangle$, $\langle L^2 \rangle$ for acentric reflections are 0.5, 0.333 respectively for untwinned datasets, and 0.375, 0.2 for perfectly twinned datasets.

5 Model quality [i](#)

5.1 Standard geometry [i](#)

Bond lengths and bond angles in the following residue types are not validated in this section: GOL, MOS, CA, FYO, FES, BCT, FAD, MTE

The Z score for a bond length (or angle) is the number of standard deviations the observed value is removed from the expected value. A bond length (or angle) with $|Z| > 5$ is considered an outlier worth inspection. RMSZ is the root-mean-square of all Z scores of the bond lengths (or angles).

Mol	Chain	Bond lengths		Bond angles	
		RMSZ	# $ Z > 5$	RMSZ	# $ Z > 5$
1	A	1.09	11/10260 (0.1%)	0.96	21/13885 (0.2%)
1	B	1.06	8/10246 (0.1%)	0.94	21/13867 (0.2%)
All	All	1.07	19/20506 (0.1%)	0.95	42/27752 (0.2%)

The worst 5 of 19 bond length outliers are listed below:

Mol	Chain	Res	Type	Atoms	Z	Observed(Å)	Ideal(Å)
1	A	992	CYS	CB-SG	-9.31	1.66	1.82
1	A	983	GLU	CG-CD	7.29	1.62	1.51
1	B	45	GLU	CB-CG	-6.59	1.39	1.52
1	A	137	GLU	CG-CD	6.55	1.61	1.51
1	A	506	GLU	CG-CD	6.26	1.61	1.51

The worst 5 of 42 bond angle outliers are listed below:

Mol	Chain	Res	Type	Atoms	Z	Observed(°)	Ideal(°)
1	A	154	ARG	NE-CZ-NH2	-14.90	112.85	120.30
1	B	154	ARG	NE-CZ-NH1	11.25	125.92	120.30
1	A	829	ARG	NE-CZ-NH2	-11.16	114.72	120.30
1	A	154	ARG	NE-CZ-NH1	11.02	125.81	120.30
1	B	154	ARG	NE-CZ-NH2	-11.01	114.80	120.30

There are no chirality outliers.

There are no planarity outliers.

5.2 Too-close contacts [i](#)

In the following table, the Non-H and H(model) columns list the number of non-hydrogen atoms and hydrogen atoms in the chain respectively. The H(added) column lists the number of hydrogen

atoms added and optimized by MolProbity. The Clashes column lists the number of clashes within the asymmetric unit, whereas Symm-Clashes lists symmetry related clashes.

Mol	Chain	Non-H	H(model)	H(added)	Clashes	Symm-Clashes
1	A	10041	0	10044	128	0
1	B	10027	0	10027	124	0
2	A	8	0	0	0	0
2	B	8	0	0	0	0
3	A	2	0	0	0	0
3	B	2	0	0	0	0
4	A	53	0	31	1	0
4	B	53	0	31	2	0
5	A	4	0	0	0	0
5	B	4	0	0	0	0
6	A	24	0	10	1	0
6	B	24	0	10	1	0
7	A	3	0	0	1	0
7	B	3	0	0	1	0
8	A	22	0	8	2	0
8	B	22	0	8	5	0
9	B	12	0	16	2	0
10	A	973	0	0	21	0
10	B	941	0	0	13	0
All	All	22226	0	20185	253	0

The all-atom clashscore is defined as the number of clashes found per 1000 atoms (including hydrogen atoms). The all-atom clashscore for this structure is 6.

The worst 5 of 253 close contacts within the same asymmetric unit are listed below, sorted by their clash magnitude.

Atom-1	Atom-2	Interatomic distance (Å)	Clash overlap (Å)
1:A:506:GLU:HG2	10:A:2141:HOH:O	1.40	1.17
1:A:504:MET:SD	10:A:1779:HOH:O	2.09	1.09
1:A:540:PRO:O	1:A:541:THR:HB	1.52	1.08
1:A:3:ALA:HB2	10:A:2268:HOH:O	1.52	1.07
1:A:60:ARG:HH11	1:A:60:ARG:HG2	1.22	1.03

There are no symmetry-related clashes.

5.3 Torsion angles

5.3.1 Protein backbone

In the following table, the Percentiles column shows the percent Ramachandran outliers of the chain as a percentile score with respect to all X-ray entries followed by that with respect to entries of similar resolution.

The Analysed column shows the number of residues for which the backbone conformation was analysed, and the total number of residues.

Mol	Chain	Analysed	Favoured	Allowed	Outliers	Percentiles	
1	A	1285/1332 (96%)	1220 (95%)	53 (4%)	12 (1%)	17	15
1	B	1283/1332 (96%)	1227 (96%)	45 (4%)	11 (1%)	17	15
All	All	2568/2664 (96%)	2447 (95%)	98 (4%)	23 (1%)	17	15

5 of 23 Ramachandran outliers are listed below:

Mol	Chain	Res	Type
1	A	565	ASN
1	A	1319	THR
1	A	1329	SER
1	B	4	ASP
1	B	20	ALA

5.3.2 Protein sidechains

In the following table, the Percentiles column shows the percent sidechain outliers of the chain as a percentile score with respect to all X-ray entries followed by that with respect to entries of similar resolution.

The Analysed column shows the number of residues for which the sidechain conformation was analysed, and the total number of residues.

Mol	Chain	Analysed	Rotameric	Outliers	Percentiles	
1	A	1097/1128 (97%)	1051 (96%)	46 (4%)	30	35
1	B	1096/1128 (97%)	1062 (97%)	34 (3%)	40	48
All	All	2193/2256 (97%)	2113 (96%)	80 (4%)	35	42

5 of 80 residues with a non-rotameric sidechain are listed below:

Mol	Chain	Res	Type
1	A	1143	GLU

Continued on next page...

Continued from previous page...

Mol	Chain	Res	Type
1	A	1326	LYS
1	B	1239	PHE
1	A	1172	LYS
1	A	1239	PHE

Some sidechains can be flipped to improve hydrogen bonding and reduce clashes. 5 of 22 such sidechains are listed below:

Mol	Chain	Res	Type
1	B	71	ASN
1	B	252	HIS
1	B	1145	ASN
1	B	131	GLN
1	B	146	ASN

5.3.3 RNA [i](#)

There are no RNA molecules in this entry.

5.4 Non-standard residues in protein, DNA, RNA chains [i](#)

There are no non-standard protein/DNA/RNA residues in this entry.

5.5 Carbohydrates [i](#)

There are no carbohydrates in this entry.

5.6 Ligand geometry [i](#)

Of 20 ligands modelled in this entry, 4 are monoatomic - leaving 16 for Mogul analysis.

In the following table, the Counts columns list the number of bonds (or angles) for which Mogul statistics could be retrieved, the number of bonds (or angles) that are observed in the model and the number of bonds (or angles) that are defined in the Chemical Component Dictionary. The Link column lists molecule types, if any, to which the group is linked. The Z score for a bond length (or angle) is the number of standard deviations the observed value is removed from the expected value. A bond length (or angle) with $|Z| > 2$ is considered an outlier worth inspection. RMSZ is the root-mean-square of all Z scores of the bond lengths (or angles).

Mol	Type	Chain	Res	Link	Bond lengths			Bond angles		
					Counts	RMSZ	# Z > 2	Counts	RMSZ	# Z > 2
5	BCT	A	1904	-	0,3,3	0.00	-	0,3,3	0.00	-
2	FES	A	3001	1	0,4,4	0.00	-	-		
9	GOL	B	1338	-	5,5,5	0.60	0	5,5,5	1.85	1 (20%)
6	MTE	B	1333	7	21,26,26	1.34	4 (19%)	21,40,40	3.12	11 (52%)
6	MTE	A	1333	7	21,26,26	1.14	1 (4%)	21,40,40	2.38	10 (47%)
4	FAD	A	3005	-	51,58,58	1.55	8 (15%)	60,89,89	2.23	14 (23%)
9	GOL	B	1336	-	5,5,5	0.61	0	5,5,5	1.89	1 (20%)
2	FES	B	4001	1	0,4,4	0.00	-	-		
5	BCT	B	1904	-	0,3,3	0.00	-	0,3,3	0.00	-
2	FES	B	4002	1	0,4,4	0.00	-	-		
4	FAD	B	4005	-	51,58,58	1.78	10 (19%)	60,89,89	1.64	10 (16%)
8	FYO	A	1335	7	22,24,24	4.17	10 (45%)	23,34,34	6.49	17 (73%)
7	MOS	B	1334	8,6	0,2,3	0.00	-	-		
7	MOS	A	1334	8,6	0,2,3	0.00	-	-		
8	FYO	B	1335	7	22,24,24	4.07	12 (54%)	23,34,34	6.22	15 (65%)
2	FES	A	3002	1	0,4,4	0.00	-	-		

In the following table, the Chirals column lists the number of chiral outliers, the number of chiral centers analysed, the number of these observed in the model and the number defined in the Chemical Component Dictionary. Similar counts are reported in the Torsion and Rings columns. '-' means no outliers of that kind were identified.

Mol	Type	Chain	Res	Link	Chirals	Torsions	Rings
2	FES	A	3001	1	-	-	0/1/1/1
9	GOL	B	1338	-	-	4/4/4/4	-
6	MTE	B	1333	7	-	2/6/34/34	0/3/3/3
6	MTE	A	1333	7	-	3/6/34/34	0/3/3/3
4	FAD	A	3005	-	-	6/30/50/50	0/6/6/6
9	GOL	B	1336	-	-	2/4/4/4	-
2	FES	B	4001	1	-	-	0/1/1/1
2	FES	B	4002	1	-	-	0/1/1/1
4	FAD	B	4005	-	-	6/30/50/50	0/6/6/6
8	FYO	A	1335	7	-	0/4/22/22	0/3/3/3
8	FYO	B	1335	7	-	0/4/22/22	0/3/3/3
2	FES	A	3002	1	-	-	0/1/1/1

The worst 5 of 45 bond length outliers are listed below:

Mol	Chain	Res	Type	Atoms	Z	Observed(Å)	Ideal(Å)
8	B	1335	FYO	CAR-NAL	10.66	1.50	1.35
8	A	1335	FYO	CAR-NAL	9.74	1.49	1.35
8	A	1335	FYO	OAC-CAP	8.04	1.39	1.23
8	B	1335	FYO	OAC-CAP	7.20	1.37	1.23
8	A	1335	FYO	OAB-CAO	7.10	1.38	1.24

The worst 5 of 79 bond angle outliers are listed below:

Mol	Chain	Res	Type	Atoms	Z	Observed(°)	Ideal(°)
8	B	1335	FYO	CAR-CAE-NAA	-19.41	124.36	177.46
8	A	1335	FYO	CAR-CAE-NAA	-18.33	127.32	177.46
8	A	1335	FYO	CAE-CAR-NAL	14.72	126.60	115.29
8	A	1335	FYO	CAV-NAM-CAU	12.46	108.02	101.04
8	B	1335	FYO	CAV-NAM-CAU	10.90	107.14	101.04

There are no chirality outliers.

5 of 23 torsion outliers are listed below:

Mol	Chain	Res	Type	Atoms
6	A	1333	MTE	C4'-O4'-P-O2P
6	A	1333	MTE	C4'-O4'-P-O3P
4	A	3005	FAD	C2'-C1'-N10-C10
4	A	3005	FAD	N10-C1'-C2'-O2'
4	A	3005	FAD	N10-C1'-C2'-C3'

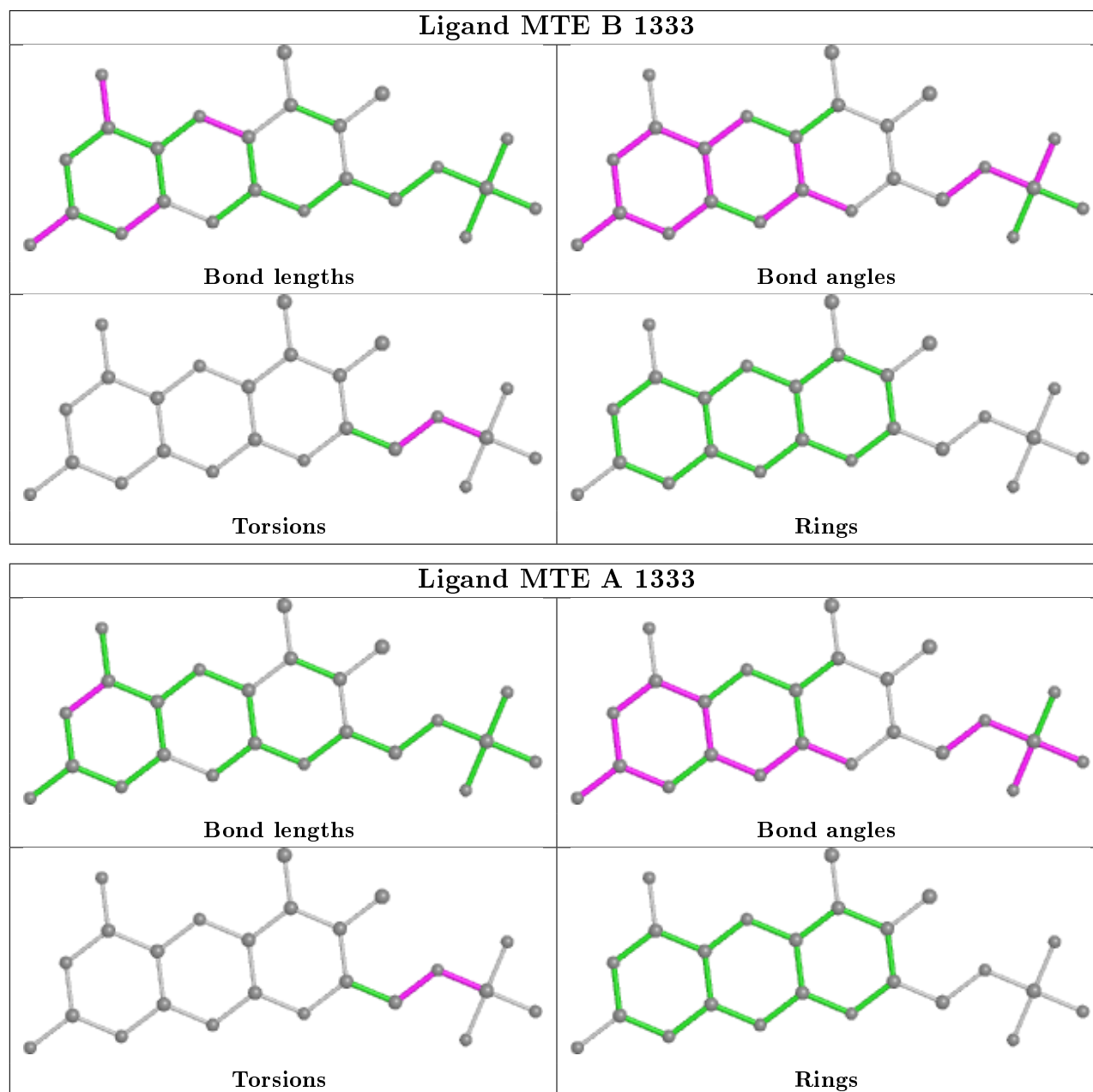
There are no ring outliers.

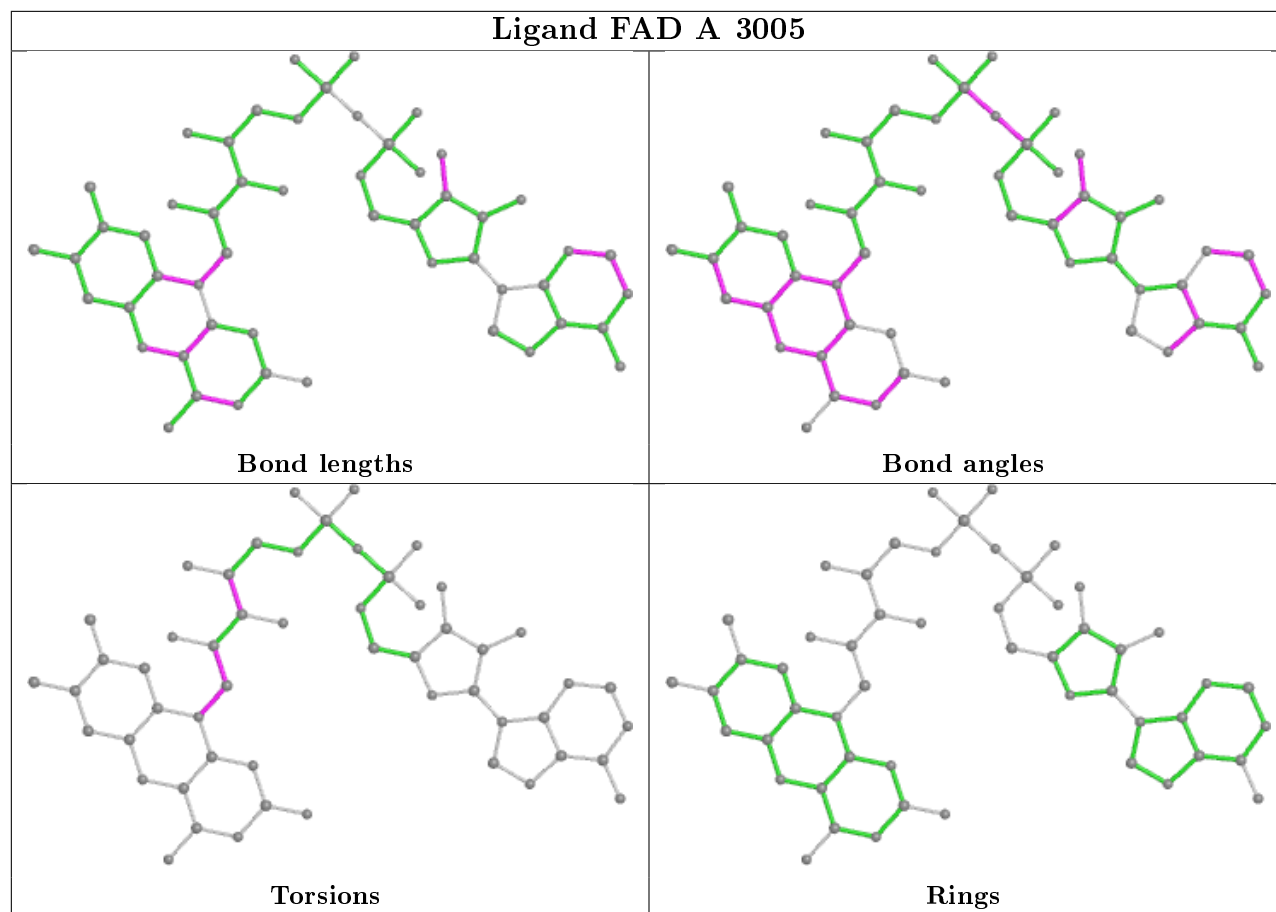
9 monomers are involved in 16 short contacts:

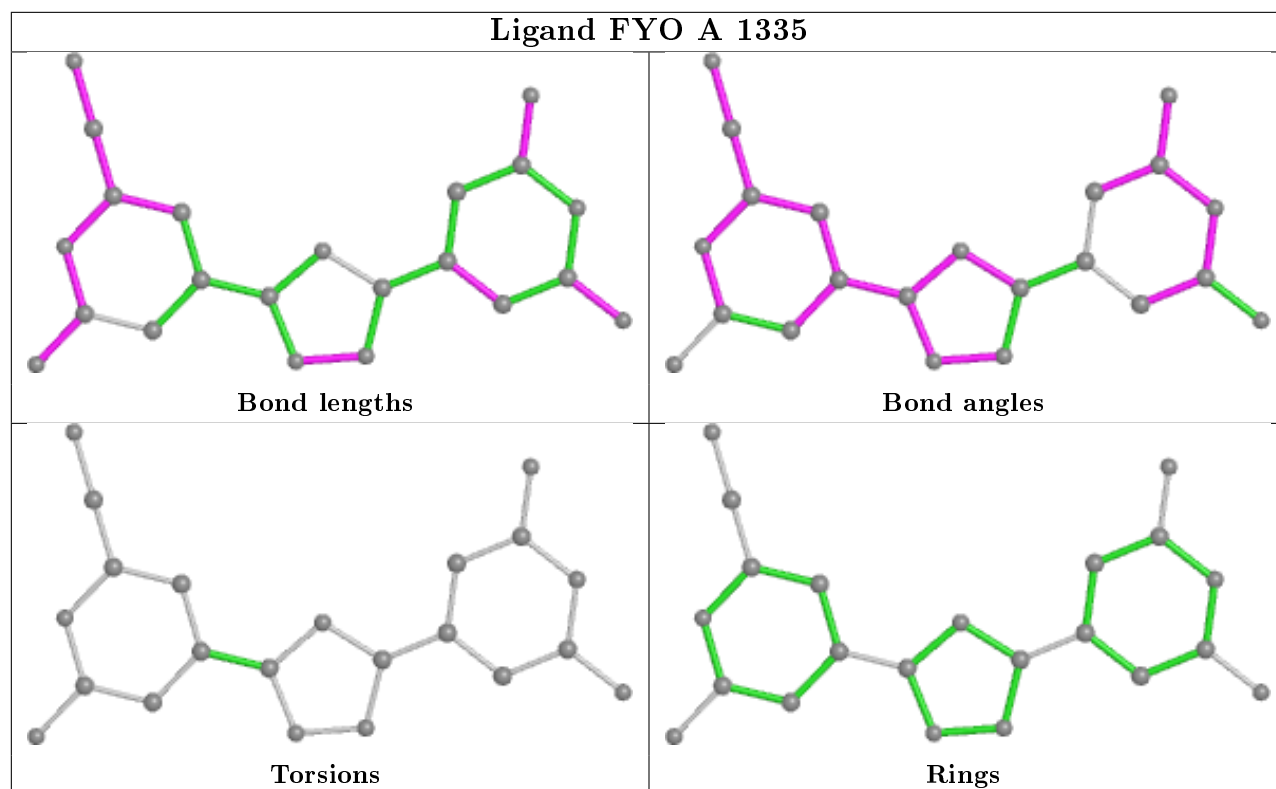
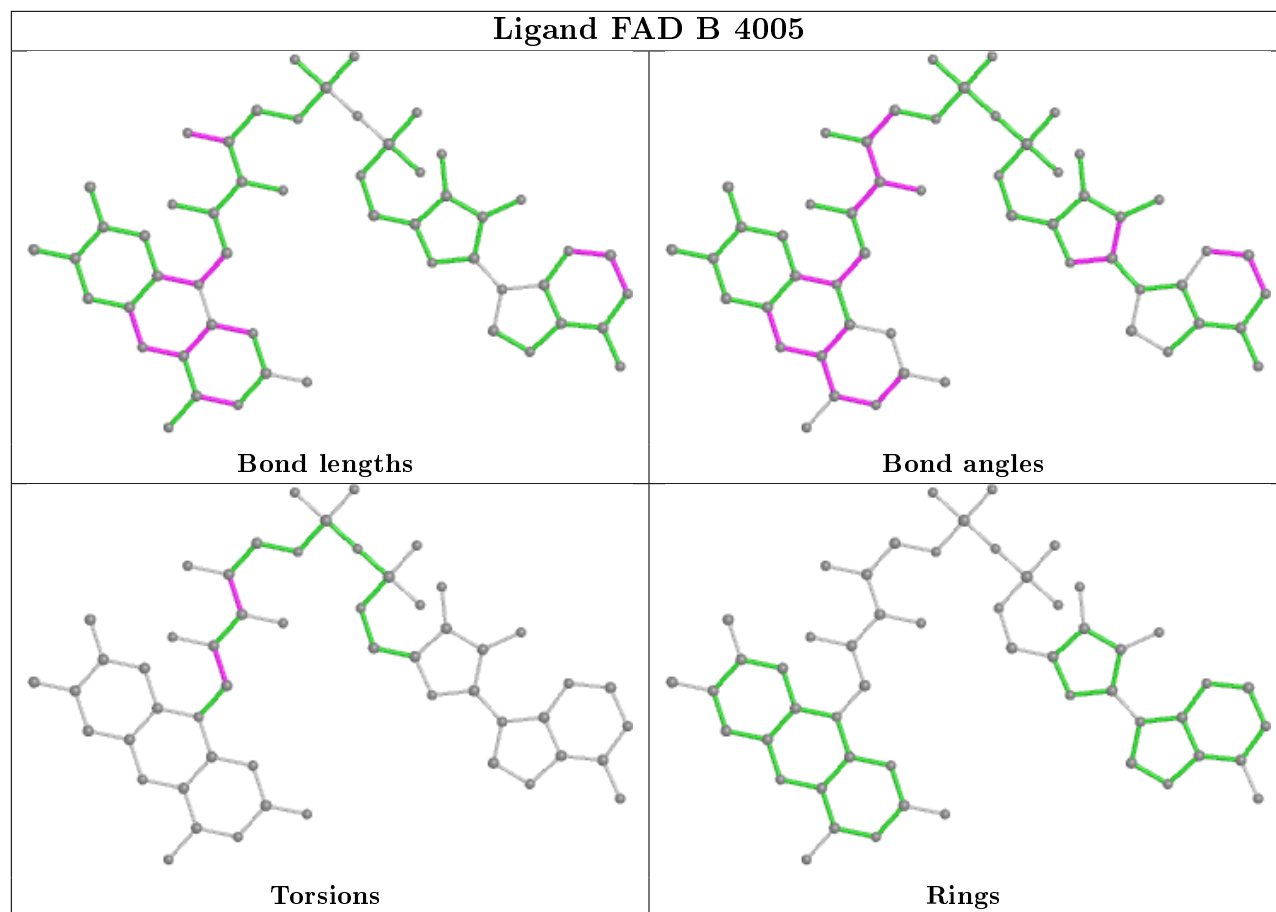
Mol	Chain	Res	Type	Clashes	Symm-Clashes
9	B	1338	GOL	2	0
6	B	1333	MTE	1	0
6	A	1333	MTE	1	0
4	A	3005	FAD	1	0
4	B	4005	FAD	2	0
8	A	1335	FYO	2	0
7	B	1334	MOS	1	0
7	A	1334	MOS	1	0
8	B	1335	FYO	5	0

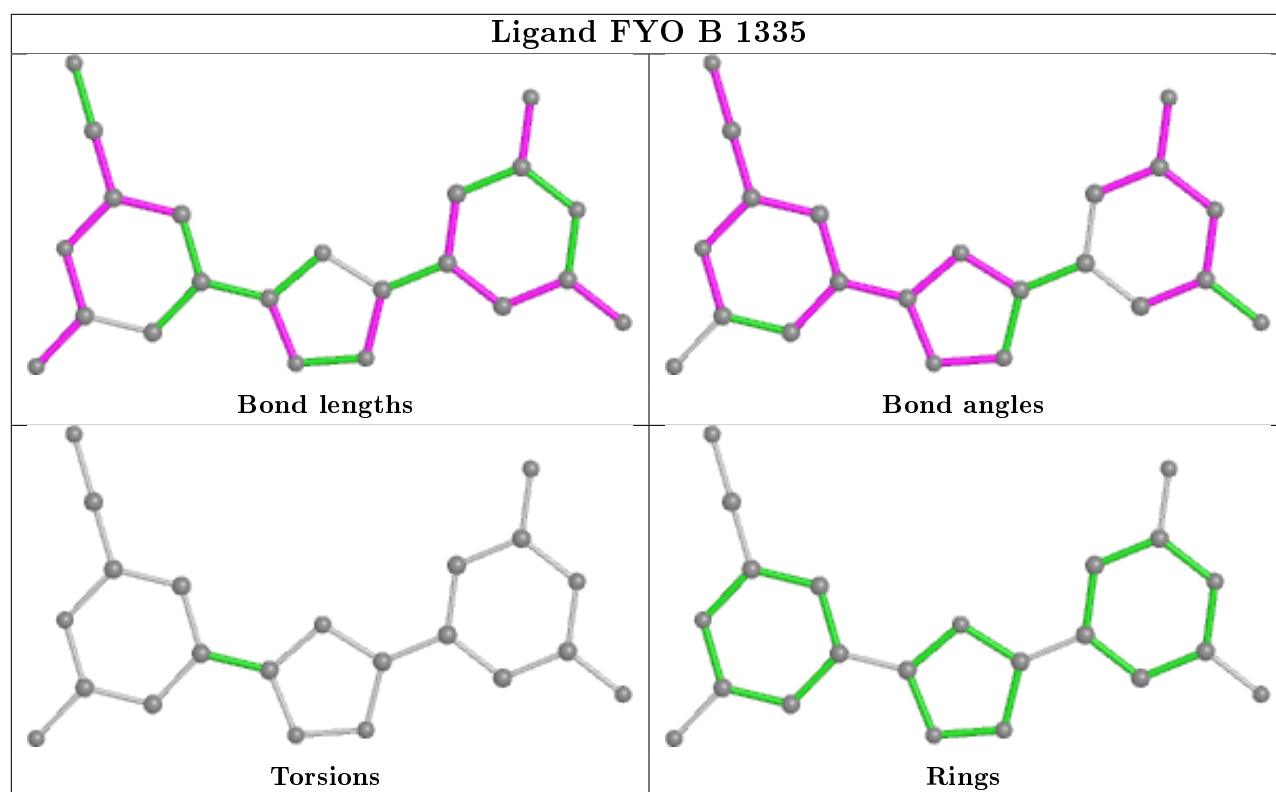
The following is a two-dimensional graphical depiction of Mogul quality analysis of bond lengths, bond angles, torsion angles, and ring geometry for all instances of the Ligand of Interest. In addition, ligands with molecular weight > 250 and outliers as shown on the validation Tables will

also be included. For torsion angles, if less than 5% of the Mogul distribution of torsion angles is within 10 degrees of the torsion angle in question, then that torsion angle is considered an outlier. Any bond that is central to one or more torsion angles identified as an outlier by Mogul will be highlighted in the graph. For rings, the root-mean-square deviation (RMSD) between the ring in question and similar rings identified by Mogul is calculated over all ring torsion angles. If the average RMSD is greater than 60 degrees and the minimal RMSD between the ring in question and any Mogul-identified rings is also greater than 60 degrees, then that ring is considered an outlier. The outliers are highlighted in purple. The color gray indicates Mogul did not find sufficient equivalents in the CSD to analyse the geometry.









5.7 Other polymers [i](#)

There are no such residues in this entry.

5.8 Polymer linkage issues [i](#)

There are no chain breaks in this entry.

6 Fit of model and data [i](#)

6.1 Protein, DNA and RNA chains [i](#)

In the following table, the column labelled ‘#RSRZ> 2’ contains the number (and percentage) of RSRZ outliers, followed by percent RSRZ outliers for the chain as percentile scores relative to all X-ray entries and entries of similar resolution. The OWAB column contains the minimum, median, 95th percentile and maximum values of the occupancy-weighted average B-factor per residue. The column labelled ‘Q< 0.9’ lists the number of (and percentage) of residues with an average occupancy less than 0.9.

Mol	Chain	Analysed	<RSRZ>	#RSRZ>2	OWAB(Å ²)	Q<0.9
1	A	1293/1332 (97%)	-0.18	28 (2%) 62 62	12, 25, 44, 85	0
1	B	1291/1332 (96%)	-0.20	28 (2%) 62 62	13, 25, 45, 72	0
All	All	2584/2664 (96%)	-0.19	56 (2%) 62 62	12, 25, 45, 85	0

The worst 5 of 56 RSRZ outliers are listed below:

Mol	Chain	Res	Type	RSRZ
1	B	3	ALA	8.9
1	B	1324	ASN	8.3
1	A	538	LEU	8.1
1	A	1320	GLY	8.0
1	B	1325	CYS	7.2

6.2 Non-standard residues in protein, DNA, RNA chains [i](#)

There are no non-standard protein/DNA/RNA residues in this entry.

6.3 Carbohydrates [i](#)

There are no carbohydrates in this entry.

6.4 Ligands [i](#)

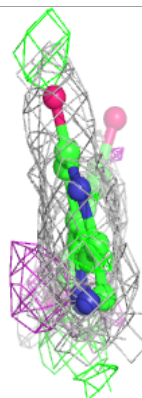
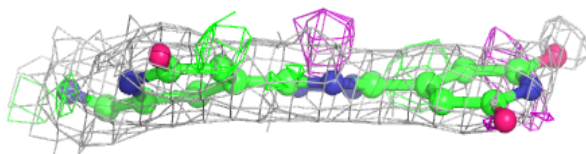
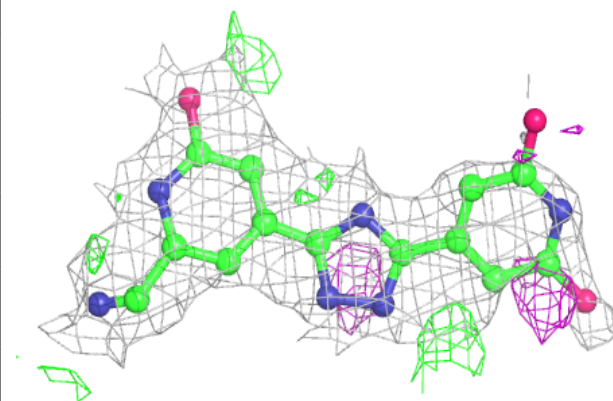
In the following table, the Atoms column lists the number of modelled atoms in the group and the number defined in the chemical component dictionary. The B-factors column lists the minimum, median, 95th percentile and maximum values of B factors of atoms in the group. The column labelled ‘Q< 0.9’ lists the number of atoms with occupancy less than 0.9.

Mol	Type	Chain	Res	Atoms	RSCC	RSR	B-factors(\AA^2)	Q<0.9
8	FYO	A	1335	22/22	0.85	0.20	25,41,59,61	0
9	GOL	B	1338	6/6	0.88	0.17	38,38,41,44	0
8	FYO	B	1335	22/22	0.89	0.16	20,37,60,65	0
9	GOL	B	1336	6/6	0.90	0.21	22,24,29,36	0
3	CA	A	1336	1/1	0.97	0.06	38,38,38,38	0
4	FAD	A	3005	53/53	0.97	0.09	15,23,26,29	0
5	BCT	A	1904	4/4	0.98	0.10	24,24,24,25	0
4	FAD	B	4005	53/53	0.98	0.09	16,22,26,31	0
5	BCT	B	1904	4/4	0.99	0.08	18,19,20,20	0
2	FES	B	4002	4/4	0.99	0.06	14,15,16,17	0
3	CA	B	4008	1/1	0.99	0.07	21,21,21,21	0
6	MTE	A	1333	24/24	0.99	0.10	12,18,20,23	0
6	MTE	B	1333	24/24	0.99	0.08	14,16,18,21	0
3	CA	A	3008	1/1	0.99	0.10	25,25,25,25	0
2	FES	A	3002	4/4	0.99	0.07	16,17,17,18	0
3	CA	B	1337	1/1	0.99	0.07	34,34,34,34	0
2	FES	B	4001	4/4	1.00	0.06	15,17,18,18	0
7	MOS	A	1334	3/4	1.00	0.07	22,22,22,24	0
7	MOS	B	1334	3/4	1.00	0.06	18,18,20,20	0
2	FES	A	3001	4/4	1.00	0.06	16,17,18,19	0

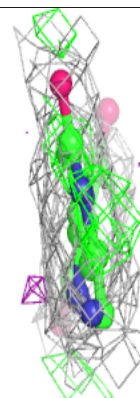
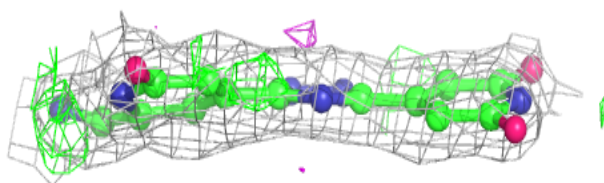
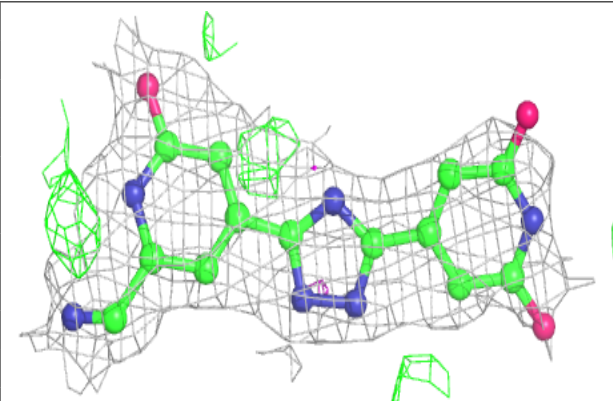
The following is a graphical depiction of the model fit to experimental electron density of all instances of the Ligand of Interest. In addition, ligands with molecular weight > 250 and outliers as shown on the geometry validation Tables will also be included. Each fit is shown from different orientation to approximate a three-dimensional view.

Electron density around FYO A 1335:

$2mF_o-DF_c$ (at 0.7 rmsd) in gray
 mF_o-DF_c (at 3 rmsd) in purple (negative)
and green (positive)

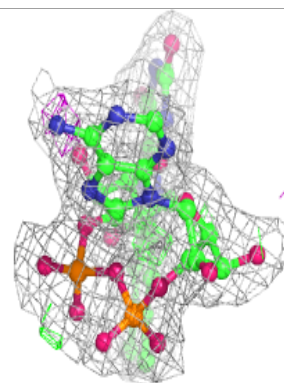
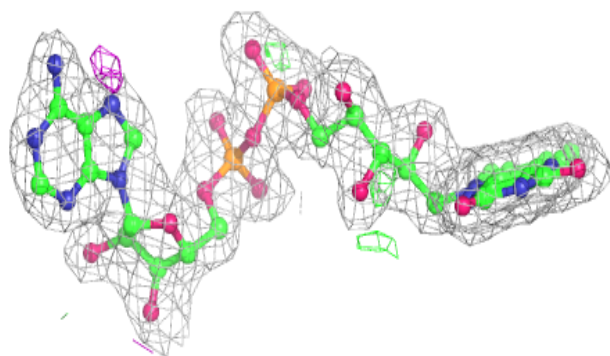
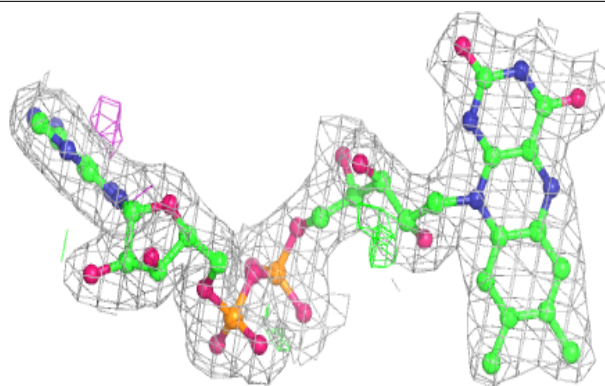
**Electron density around FYO B 1335:**

$2mF_o-DF_c$ (at 0.7 rmsd) in gray
 mF_o-DF_c (at 3 rmsd) in purple (negative)
and green (positive)

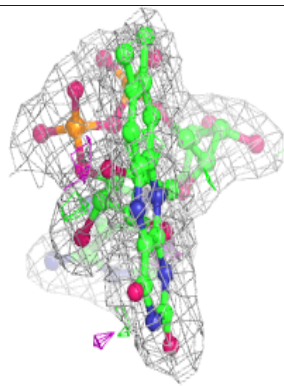
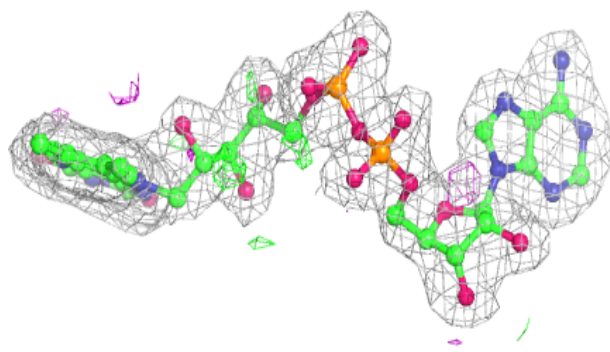
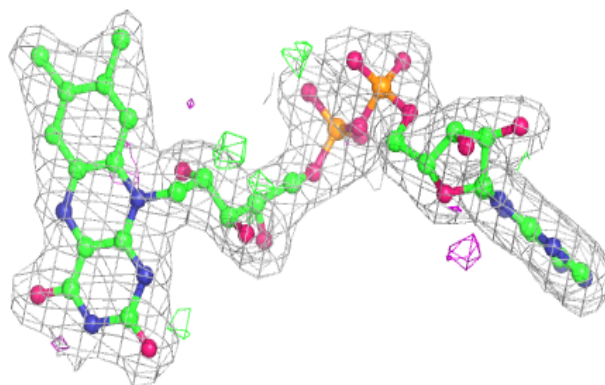


Electron density around FAD A 3005:

$2mF_o-DF_c$ (at 0.7 rmsd) in gray
 mF_o-DF_c (at 3 rmsd) in purple (negative)
and green (positive)

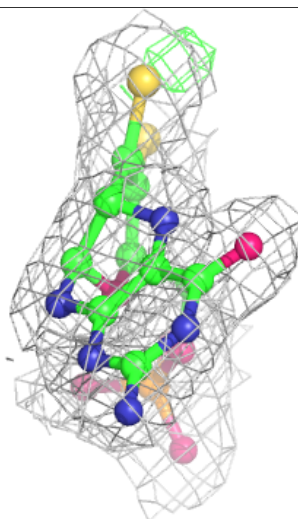
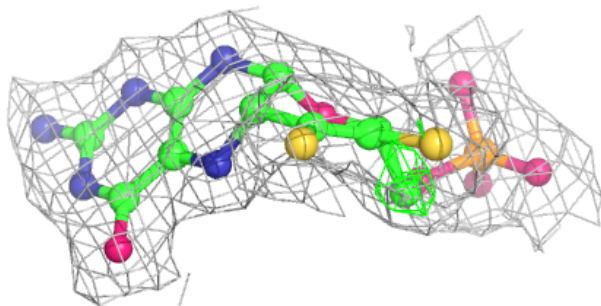
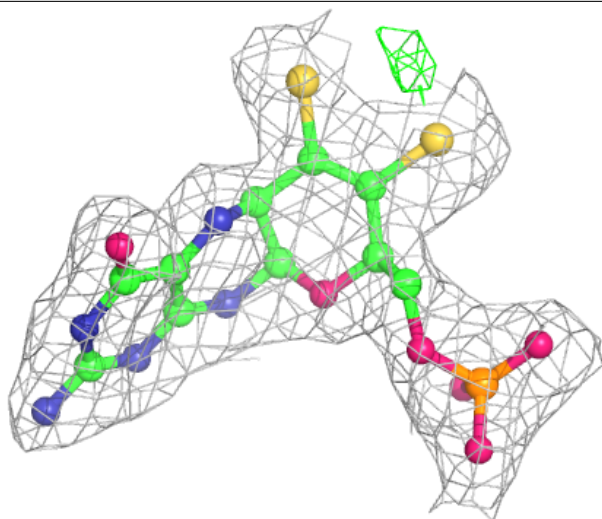
**Electron density around FAD B 4005:**

$2mF_o-DF_c$ (at 0.7 rmsd) in gray
 mF_o-DF_c (at 3 rmsd) in purple (negative)
and green (positive)



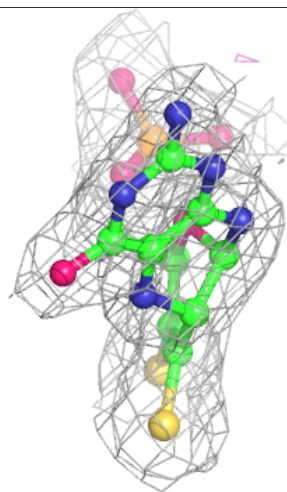
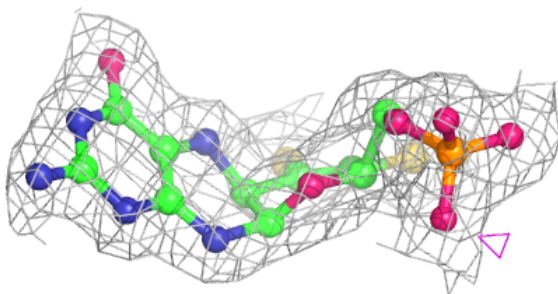
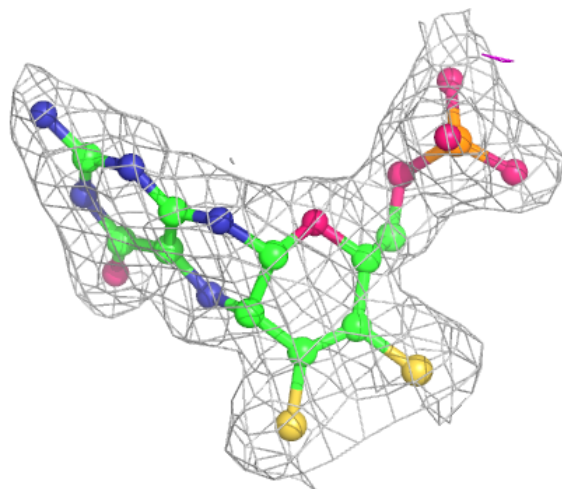
Electron density around MTE A 1333:

$2mF_o-DF_c$ (at 0.7 rmsd) in gray
 mF_o-DF_c (at 3 rmsd) in purple (negative)
and green (positive)



Electron density around MTE B 1333:

$2mF_o-DF_c$ (at 0.7 rmsd) in gray
 mF_o-DF_c (at 3 rmsd) in purple (negative)
and green (positive)



6.5 Other polymers [i](#)

There are no such residues in this entry.