



# Full wwPDB X-ray Structure Validation Report ⓘ

Aug 9, 2020 – 04:49 PM BST

PDB ID : 4AML  
Title : CRYSTAL STRUCTURE OF WHEAT GERM AGGLUTININ ISOLECTIN  
1 IN COMPLEX WITH GLYCOSYLURETHAN  
Authors : Schwefel, D.; Maierhofer, C.; Beck, J.G.; Seeberger, S.; Diederichs, K.; Moeller,  
H.M.; Welte, W.; Wittmann, V.  
Deposited on : 2012-03-12  
Resolution : 1.60 Å(reported)

This is a Full wwPDB X-ray Structure Validation Report for a publicly released PDB entry.

We welcome your comments at [validation@mail.wwpdb.org](mailto:validation@mail.wwpdb.org)

A user guide is available at

<https://www.wwpdb.org/validation/2017/XrayValidationReportHelp>

with specific help available everywhere you see the ⓘ symbol.

---

The following versions of software and data (see [references ⓘ](#)) were used in the production of this report:

MolProbity : 4.02b-467  
Mogul : 1.8.5 (274361), CSD as541be (2020)  
Xtriage (Phenix) : 1.13  
EDS : 2.13.1  
buster-report : 1.1.7 (2018)  
Percentile statistics : 20191225.v01 (using entries in the PDB archive December 25th 2019)  
Refmac : 5.8.0158  
CCP4 : 7.0.044 (Gargrove)  
Ideal geometry (proteins) : Engh & Huber (2001)  
Ideal geometry (DNA, RNA) : Parkinson et al. (1996)  
Validation Pipeline (wwPDB-VP) : 2.13.1

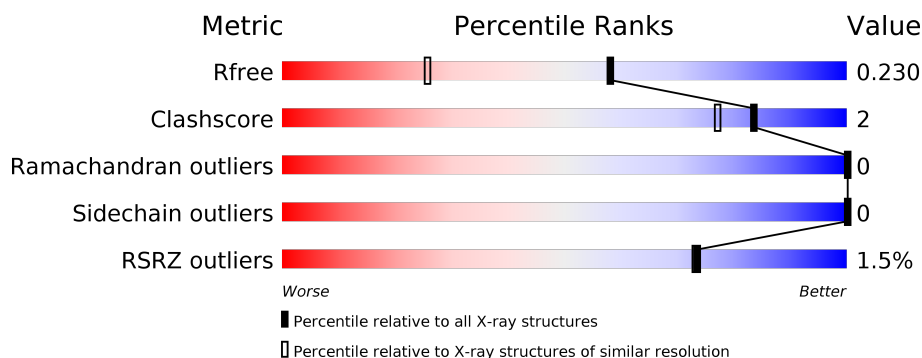
# 1 Overall quality at a glance

The following experimental techniques were used to determine the structure:

## *X-RAY DIFFRACTION*

The reported resolution of this entry is 1.60 Å.

Percentile scores (ranging between 0-100) for global validation metrics of the entry are shown in the following graphic. The table shows the number of entries on which the scores are based.



Metric	Whole archive (#Entries)	Similar resolution (#Entries, resolution range(Å))
$R_{free}$	130704	3398 (1.60-1.60)
Clashscore	141614	3665 (1.60-1.60)
Ramachandran outliers	138981	3564 (1.60-1.60)
Sidechain outliers	138945	3563 (1.60-1.60)
RSRZ outliers	127900	3321 (1.60-1.60)

The table below summarises the geometric issues observed across the polymeric chains and their fit to the electron density. The red, orange, yellow and green segments on the lower bar indicate the fraction of residues that contain outliers for  $\geq 3$ , 2, 1 and 0 types of geometric quality criteria respectively. A grey segment represents the fraction of residues that are not modelled. The numeric value for each fraction is indicated below the corresponding segment, with a dot representing fractions  $\leq 5\%$ . The upper red bar (where present) indicates the fraction of residues that have poor fit to the electron density. The numeric value is given above the bar.

Mol	Chain	Length	Quality of chain
1	A	171	<div> <div>2%</div> <div> <div></div> <div>94%</div> <div>6%</div> </div> </div>
1	B	171	<div> <div>%</div> <div> <div></div> <div>93%</div> <div>6%</div> </div> </div>

## 2 Entry composition [i](#)

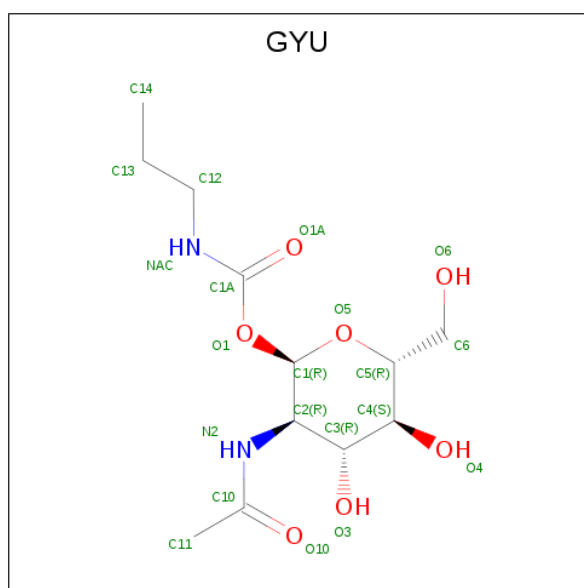
There are 4 unique types of molecules in this entry. The entry contains 2691 atoms, of which 0 are hydrogens and 0 are deuteriums.

In the tables below, the ZeroOcc column contains the number of atoms modelled with zero occupancy, the AltConf column contains the number of residues with at least one atom in alternate conformation and the Trace column contains the number of residues modelled with at most 2 atoms.

- Molecule 1 is a protein called AGGLUTININ ISOLECTIN 1.

Mol	Chain	Residues	Atoms					ZeroOcc	AltConf	Trace
1	A	171	Total	C	N	O	S	0	0	0
			1167	681	214	238	34			
1	B	170	Total	C	N	O	S	0	1	0
			1168	682	214	238	34			

- Molecule 2 is 2-acetamido-2-deoxy-1-O-(propylcarbamoyl)-alpha-D-glucopyranose (three-letter code: GYU) (formula:  $C_{12}H_{22}N_2O_7$ ).



Mol	Chain	Residues	Atoms				ZeroOcc	AltConf
2	A	1	Total	C	N	O	0	1
			24	14	2	8		
2	A	1	Total	C	N	O	0	0
			21	12	2	7		
2	B	1	Total	C	N	O	0	0
			21	12	2	7		
2	B	1	Total	C	N	O	0	0
			21	12	2	7		

- Molecule 3 is GLYCEROL (three-letter code: GOL) (formula:  $C_3H_8O_3$ ).



Mol	Chain	Residues	Atoms			ZeroOcc	AltConf
3	A	1	Total	C	O	0	1
			12	6	6		
3	B	1	Total	C	O	0	1
			12	6	6		

- Molecule 4 is water.

Mol	Chain	Residues	Atoms		ZeroOcc	AltConf
4	A	148	Total	O	0	0
			148	148		
4	B	97	Total	O	0	0
			97	97		

### 3 Residue-property plots [i](#)

These plots are drawn for all protein, RNA, DNA and oligosaccharide chains in the entry. The first graphic for a chain summarises the proportions of the various outlier classes displayed in the second graphic. The second graphic shows the sequence view annotated by issues in geometry and electron density. Residues are color-coded according to the number of geometric quality criteria for which they contain at least one outlier: green = 0, yellow = 1, orange = 2 and red = 3 or more. A red dot above a residue indicates a poor fit to the electron density ( $RSRZ > 2$ ). Stretches of 2 or more consecutive residues without any outlier are shown as a green connector. Residues present in the sample, but not in the model, are shown in grey.

- Molecule 1: AGGLUTININ ISOLECTIN 1



- Molecule 1: AGGLUTININ ISOLECTIN 1



## 4 Data and refinement statistics

Property	Value	Source
Space group	P 32 2 1	Depositor
Cell constants a, b, c, $\alpha$ , $\beta$ , $\gamma$	63.25Å 63.25Å 153.55Å 90.00° 90.00° 120.00°	Depositor
Resolution (Å)	54.78 – 1.60 26.96 – 1.60	Depositor EDS
% Data completeness (in resolution range)	95.6 (54.78-1.60) 82.6 (26.96-1.60)	Depositor EDS
$R_{merge}$	0.06	Depositor
$R_{sym}$	(Not available)	Depositor
$\langle I/\sigma(I) \rangle$ <sup>1</sup>	1.66 (at 1.60Å)	Xtriage
Refinement program	REFMAC 5.6.0117	Depositor
R, $R_{free}$	0.196 , 0.232 0.197 , 0.230	Depositor DCC
$R_{free}$ test set	2060 reflections (5.13%)	wwPDB-VP
Wilson B-factor (Å <sup>2</sup> )	23.2	Xtriage
Anisotropy	0.534	Xtriage
Bulk solvent $k_{sol}$ (e/Å <sup>3</sup> ), $B_{sol}$ (Å <sup>2</sup> )	0.37 , 41.4	EDS
L-test for twinning <sup>2</sup>	$\langle  L  \rangle = 0.49$ , $\langle L^2 \rangle = 0.33$	Xtriage
Estimated twinning fraction	0.036 for -h,-k,l	Xtriage
$F_o, F_c$ correlation	0.96	EDS
Total number of atoms	2691	wwPDB-VP
Average B, all atoms (Å <sup>2</sup> )	33.0	wwPDB-VP

Xtriage's analysis on translational NCS is as follows: *The largest off-origin peak in the Patterson function is 6.90% of the height of the origin peak. No significant pseudotranslation is detected.*

<sup>1</sup>Intensities estimated from amplitudes.

<sup>2</sup>Theoretical values of  $\langle |L| \rangle$ ,  $\langle L^2 \rangle$  for acentric reflections are 0.5, 0.333 respectively for untwinned datasets, and 0.375, 0.2 for perfectly twinned datasets.

## 5 Model quality [i](#)

### 5.1 Standard geometry [i](#)

Bond lengths and bond angles in the following residue types are not validated in this section: GOL, GYU, PCA

The Z score for a bond length (or angle) is the number of standard deviations the observed value is removed from the expected value. A bond length (or angle) with  $|Z| > 5$  is considered an outlier worth inspection. RMSZ is the root-mean-square of all Z scores of the bond lengths (or angles).

Mol	Chain	Bond lengths		Bond angles	
		RMSZ	$\# Z  > 5$	RMSZ	$\# Z  > 5$
1	A	1.14	5/1181 (0.4%)	1.04	2/1580 (0.1%)
1	B	1.09	4/1182 (0.3%)	1.04	5/1583 (0.3%)
All	All	1.12	9/2363 (0.4%)	1.04	7/3163 (0.2%)

All (9) bond length outliers are listed below:

Mol	Chain	Res	Type	Atoms	Z	Observed(Å)	Ideal(Å)
1	A	1	PCA	C-N	10.18	1.57	1.34
1	B	150	TRP	CD2-CE2	6.29	1.48	1.41
1	A	150	TRP	CD2-CE2	6.16	1.48	1.41
1	B	115	GLU	CD-OE1	5.97	1.32	1.25
1	A	107	TRP	CD2-CE2	5.62	1.48	1.41
1	A	73	TYR	CE2-CZ	5.54	1.45	1.38
1	B	127	SER	CB-OG	5.42	1.49	1.42
1	B	145	TYR	CE1-CZ	5.37	1.45	1.38
1	A	19	SER	CB-OG	5.04	1.48	1.42

All (7) bond angle outliers are listed below:

Mol	Chain	Res	Type	Atoms	Z	Observed(°)	Ideal(°)
1	B	1	PCA	O-C-N	-9.54	107.43	122.70
1	B	1	PCA	C-N-CA	8.08	141.89	121.70
1	B	139	ARG	NE-CZ-NH1	7.24	123.92	120.30
1	B	1	PCA	CA-C-N	6.68	131.90	117.20
1	A	16	LEU	CB-CG-CD1	5.64	120.59	111.00
1	A	26	MET	CA-CB-CG	5.46	122.59	113.30
1	B	112	LEU	CB-CG-CD1	-5.45	101.74	111.00

There are no chirality outliers.

There are no planarity outliers.

## 5.2 Too-close contacts

In the following table, the Non-H and H(model) columns list the number of non-hydrogen atoms and hydrogen atoms in the chain respectively. The H(added) column lists the number of hydrogen atoms added and optimized by MolProbity. The Clashes column lists the number of clashes within the asymmetric unit, whereas Symm-Clashes lists symmetry related clashes.

Mol	Chain	Non-H	H(model)	H(added)	Clashes	Symm-Clashes
1	A	1167	0	999	6	0
1	B	1168	0	1000	3	0
2	A	45	0	11	0	0
2	B	42	0	18	1	0
3	A	12	0	16	1	0
3	B	12	0	16	5	0
4	A	148	0	0	3	0
4	B	97	0	0	1	0
All	All	2691	0	2060	11	0

The all-atom clashscore is defined as the number of clashes found per 1000 atoms (including hydrogen atoms). The all-atom clashscore for this structure is 2.

All (11) close contacts within the same asymmetric unit are listed below, sorted by their clash magnitude.

Atom-1	Atom-2	Interatomic distance (Å)	Clash overlap (Å)
1:A:10:MET:HE1	4:A:2008:HOH:O	1.85	0.76
1:A:10:MET:CE	4:A:2008:HOH:O	2.40	0.66
1:A:41:TRP:HZ2	3:B:1173[B]:GOL:HO1	1.45	0.62
2:B:1171:GYU:H142	2:B:1171:GYU:O1A	2.04	0.58
1:B:126:CYS:HB2	3:B:1173[A]:GOL:H11	1.85	0.57
1:A:41:TRP:HZ2	3:B:1173[B]:GOL:O1	1.91	0.52
1:A:41:TRP:CZ2	3:B:1173[B]:GOL:O1	2.66	0.47
3:B:1173[A]:GOL:H12	4:B:2077:HOH:O	2.15	0.46
1:B:118:GLY:O	1:B:119:GLY:C	2.54	0.45
1:A:126:CYS:HB2	3:A:1174[B]:GOL:H31	1.99	0.44
4:A:2148:HOH:O	1:B:26:MET:SD	2.62	0.43

There are no symmetry-related clashes.



## 5.3 Torsion angles

### 5.3.1 Protein backbone

In the following table, the Percentiles column shows the percent Ramachandran outliers of the chain as a percentile score with respect to all X-ray entries followed by that with respect to entries of similar resolution.

The Analysed column shows the number of residues for which the backbone conformation was analysed, and the total number of residues.

Mol	Chain	Analysed	Favoured	Allowed	Outliers	Percentiles	
1	A	169/171 (99%)	165 (98%)	4 (2%)	0	100	100
1	B	169/171 (99%)	164 (97%)	5 (3%)	0	100	100
All	All	338/342 (99%)	329 (97%)	9 (3%)	0	100	100

There are no Ramachandran outliers to report.

### 5.3.2 Protein sidechains

In the following table, the Percentiles column shows the percent sidechain outliers of the chain as a percentile score with respect to all X-ray entries followed by that with respect to entries of similar resolution.

The Analysed column shows the number of residues for which the sidechain conformation was analysed, and the total number of residues.

Mol	Chain	Analysed	Rotameric	Outliers	Percentiles	
1	A	119/119 (100%)	119 (100%)	0	100	100
1	B	120/119 (101%)	120 (100%)	0	100	100
All	All	239/238 (100%)	239 (100%)	0	100	100

There are no protein residues with a non-rotameric sidechain to report.

Some sidechains can be flipped to improve hydrogen bonding and reduce clashes. There are no such sidechains identified.

### 5.3.3 RNA

There are no RNA molecules in this entry.

## 5.4 Non-standard residues in protein, DNA, RNA chains ⓘ

2 non-standard protein/DNA/RNA residues are modelled in this entry.

In the following table, the Counts columns list the number of bonds (or angles) for which Mogul statistics could be retrieved, the number of bonds (or angles) that are observed in the model and the number of bonds (or angles) that are defined in the Chemical Component Dictionary. The Link column lists molecule types, if any, to which the group is linked. The Z score for a bond length (or angle) is the number of standard deviations the observed value is removed from the expected value. A bond length (or angle) with  $|Z| > 2$  is considered an outlier worth inspection. RMSZ is the root-mean-square of all Z scores of the bond lengths (or angles).

Mol	Type	Chain	Res	Link	Bond lengths			Bond angles		
					Counts	RMSZ	$\# Z  > 2$	Counts	RMSZ	$\# Z  > 2$
1	PCA	A	1	1	7,8,9	1.05	1 (14%)	9,10,12	1.66	4 (44%)
1	PCA	B	1	1	7,8,9	2.45	2 (28%)	9,10,12	2.14	4 (44%)

In the following table, the Chirals column lists the number of chiral outliers, the number of chiral centers analysed, the number of these observed in the model and the number defined in the Chemical Component Dictionary. Similar counts are reported in the Torsion and Rings columns. '-' means no outliers of that kind were identified.

Mol	Type	Chain	Res	Link	Chirals	Torsions	Rings
1	PCA	A	1	1	-	0/0/11/13	0/1/1/1
1	PCA	B	1	1	-	0/0/11/13	0/1/1/1

All (3) bond length outliers are listed below:

Mol	Chain	Res	Type	Atoms	Z	Observed(Å)	Ideal(Å)
1	B	1	PCA	CA-N	-5.89	1.39	1.46
1	B	1	PCA	CG-CD	2.26	1.56	1.50
1	A	1	PCA	O-C	2.19	1.28	1.19

All (8) bond angle outliers are listed below:

Mol	Chain	Res	Type	Atoms	Z	Observed(°)	Ideal(°)
1	B	1	PCA	CB-CA-C	-4.34	106.72	112.70
1	B	1	PCA	OE-CD-CG	-3.36	120.90	126.76
1	A	1	PCA	CB-CG-CD	-2.47	100.42	104.40
1	A	1	PCA	CG-CD-N	2.24	114.20	108.39
1	B	1	PCA	CB-CG-CD	-2.17	100.90	104.40
1	A	1	PCA	O-C-CA	-2.10	119.28	124.78
1	B	1	PCA	O-C-CA	-2.08	119.32	124.78
1	A	1	PCA	OE-CD-CG	-2.07	123.15	126.76

There are no chirality outliers.

There are no torsion outliers.

There are no ring outliers.

No monomer is involved in short contacts.

## 5.5 Carbohydrates [i](#)

There are no monosaccharides in this entry.

## 5.6 Ligand geometry [i](#)

9 ligands are modelled in this entry.

In the following table, the Counts columns list the number of bonds (or angles) for which Mogul statistics could be retrieved, the number of bonds (or angles) that are observed in the model and the number of bonds (or angles) that are defined in the Chemical Component Dictionary. The Link column lists molecule types, if any, to which the group is linked. The Z score for a bond length (or angle) is the number of standard deviations the observed value is removed from the expected value. A bond length (or angle) with  $|Z| > 2$  is considered an outlier worth inspection. RMSZ is the root-mean-square of all Z scores of the bond lengths (or angles).

Mol	Type	Chain	Res	Link	Bond lengths			Bond angles		
					Counts	RMSZ	$\# Z  > 2$	Counts	RMSZ	$\# Z  > 2$
3	GOL	A	1174[A]	-	5,5,5	0.38	0	5,5,5	0.51	0
3	GOL	B	1173[B]	-	5,5,5	0.51	0	5,5,5	0.79	0
2	GYU	B	1171	-	21,21,21	1.53	1 (4%)	27,28,28	2.11	5 (18%)
2	GYU	A	1172[A]	-	21,21,21	2.61	7 (33%)	27,28,28	2.68	9 (33%)
3	GOL	B	1173[A]	-	5,5,5	0.73	0	5,5,5	0.98	1 (20%)
2	GYU	A	1173	-	21,21,21	1.68	2 (9%)	27,28,28	1.83	7 (25%)
2	GYU	B	1172	-	21,21,21	1.48	4 (19%)	27,28,28	2.99	10 (37%)
2	GYU	A	1172[B]	-	21,21,21	2.56	7 (33%)	27,28,28	2.67	8 (29%)
3	GOL	A	1174[B]	-	5,5,5	0.34	0	5,5,5	0.66	0

In the following table, the Chirals column lists the number of chiral outliers, the number of chiral centers analysed, the number of these observed in the model and the number defined in the Chemical Component Dictionary. Similar counts are reported in the Torsion and Rings columns. '-' means no outliers of that kind were identified.

Mol	Type	Chain	Res	Link	Chirals	Torsions	Rings
3	GOL	A	1174[A]	-	-	1/4/4/4	-
3	GOL	B	1173[B]	-	-	4/4/4/4	-

*Continued on next page...*

Continued from previous page...

Mol	Type	Chain	Res	Link	Chirals	Torsions	Rings
2	GYU	B	1171	-	-	4/14/34/34	0/1/1/1
2	GYU	A	1172[A]	-	-	2/14/34/34	0/1/1/1
3	GOL	B	1173[A]	-	-	2/4/4/4	-
2	GYU	A	1173	-	-	1/14/34/34	0/1/1/1
2	GYU	B	1172	-	-	1/14/34/34	0/1/1/1
2	GYU	A	1172[B]	-	-	3/14/34/34	0/1/1/1
3	GOL	A	1174[B]	-	-	2/4/4/4	-

All (21) bond length outliers are listed below:

Mol	Chain	Res	Type	Atoms	Z	Observed(Å)	Ideal(Å)
2	A	1172[A]	GYU	O1-C1A	8.50	1.49	1.35
2	A	1172[B]	GYU	O1-C1A	8.50	1.49	1.35
2	A	1173	GYU	O1-C1A	6.52	1.46	1.35
2	B	1171	GYU	O1-C1A	6.42	1.46	1.35
2	A	1172[A]	GYU	O3-C3	3.53	1.51	1.43
2	A	1172[B]	GYU	O3-C3	3.53	1.51	1.43
2	A	1172[A]	GYU	C2-N2	-3.32	1.40	1.45
2	A	1172[B]	GYU	C2-N2	-3.32	1.40	1.45
2	A	1172[A]	GYU	C1-C2	3.27	1.58	1.53
2	A	1172[B]	GYU	C1-C2	3.27	1.58	1.53
2	B	1172	GYU	O1-C1A	3.18	1.40	1.35
2	A	1172[A]	GYU	C4-C3	-2.88	1.45	1.52
2	A	1172[B]	GYU	C4-C3	-2.88	1.45	1.52
2	A	1173	GYU	O1-C1	-2.77	1.38	1.43
2	A	1172[A]	GYU	C1A-NAC	-2.72	1.28	1.34
2	A	1172[B]	GYU	C1A-NAC	-2.72	1.28	1.34
2	B	1172	GYU	C2-N2	2.50	1.49	1.45
2	B	1172	GYU	O1-C1	-2.25	1.39	1.43
2	A	1172[A]	GYU	O5-C1	-2.22	1.36	1.41
2	A	1172[B]	GYU	O5-C1	-2.22	1.36	1.41
2	B	1172	GYU	O10-C10	2.11	1.28	1.23

All (40) bond angle outliers are listed below:

Mol	Chain	Res	Type	Atoms	Z	Observed(°)	Ideal(°)
2	B	1172	GYU	O1-C1A-O1A	-10.02	109.45	124.53
2	A	1172[A]	GYU	O1-C1A-O1A	-6.98	114.02	124.53
2	A	1172[B]	GYU	O1-C1A-O1A	-6.98	114.02	124.53
2	A	1172[A]	GYU	O1A-C1A-NAC	6.48	134.90	124.96
2	A	1172[B]	GYU	O1A-C1A-NAC	6.48	134.90	124.96

Continued on next page...

*Continued from previous page...*

Mol	Chain	Res	Type	Atoms	Z	Observed(°)	Ideal(°)
2	A	1172[A]	GYU	O1-C1-C2	-5.66	99.47	107.16
2	A	1172[B]	GYU	O1-C1-C2	-5.66	99.47	107.16
2	B	1171	GYU	O1-C1A-O1A	-5.43	116.35	124.53
2	B	1172	GYU	C6-C5-C4	-5.36	100.45	113.00
2	B	1171	GYU	O1-C1A-NAC	5.22	120.28	111.11
2	B	1172	GYU	O1A-C1A-NAC	4.97	132.59	124.96
2	B	1171	GYU	O1-C1-C2	4.41	113.15	107.16
2	B	1172	GYU	C11-C10-N2	-4.05	109.23	116.10
2	B	1172	GYU	O10-C10-C11	3.98	129.45	122.06
2	B	1172	GYU	O1-C1A-NAC	3.89	117.94	111.11
2	A	1172[A]	GYU	O10-C10-N2	-3.75	115.05	121.95
2	A	1172[B]	GYU	O10-C10-N2	-3.75	115.05	121.95
2	A	1173	GYU	O1-C1A-O1A	-3.58	119.14	124.53
2	A	1173	GYU	C1-O5-C5	3.51	120.58	113.69
2	B	1172	GYU	C1-O5-C5	3.42	120.41	113.69
2	B	1171	GYU	O5-C5-C4	3.41	115.89	109.69
2	A	1173	GYU	O1-C1A-NAC	3.40	117.08	111.11
2	A	1173	GYU	O3-C3-C2	-3.24	103.12	109.66
2	A	1173	GYU	O1-C1-C2	-3.11	102.94	107.16
2	A	1173	GYU	C2-N2-C10	-3.07	115.72	123.18
2	A	1172[A]	GYU	O5-C1-O1	2.73	115.36	107.97
2	A	1172[B]	GYU	O5-C1-O1	2.73	115.36	107.97
2	B	1172	GYU	C3-C4-C5	-2.70	105.43	110.24
2	B	1172	GYU	C2-N2-C10	-2.60	116.85	123.18
2	A	1172[A]	GYU	C13-C12-NAC	-2.56	104.20	112.32
2	A	1172[B]	GYU	C13-C12-NAC	-2.56	104.20	112.32
2	A	1172[A]	GYU	O5-C5-C4	-2.48	105.18	109.69
2	A	1173	GYU	C1-C2-N2	-2.24	107.14	111.00
2	A	1172[A]	GYU	C3-C2-N2	-2.22	106.42	110.62
2	A	1172[B]	GYU	C3-C2-N2	-2.22	106.42	110.62
2	B	1172	GYU	O6-C6-C5	-2.13	103.98	111.29
2	B	1171	GYU	C6-C5-C4	-2.11	108.05	113.00
3	B	1173[A]	GOL	O2-C2-C3	2.04	118.12	109.12
2	A	1172[A]	GYU	O3-C3-C2	-2.00	105.61	109.66
2	A	1172[B]	GYU	O3-C3-C2	-2.00	105.61	109.66

There are no chirality outliers.

All (20) torsion outliers are listed below:

Mol	Chain	Res	Type	Atoms
3	B	1173[B]	GOL	O1-C1-C2-C3
3	B	1173[B]	GOL	C1-C2-C3-O3

*Continued on next page...*

*Continued from previous page...*

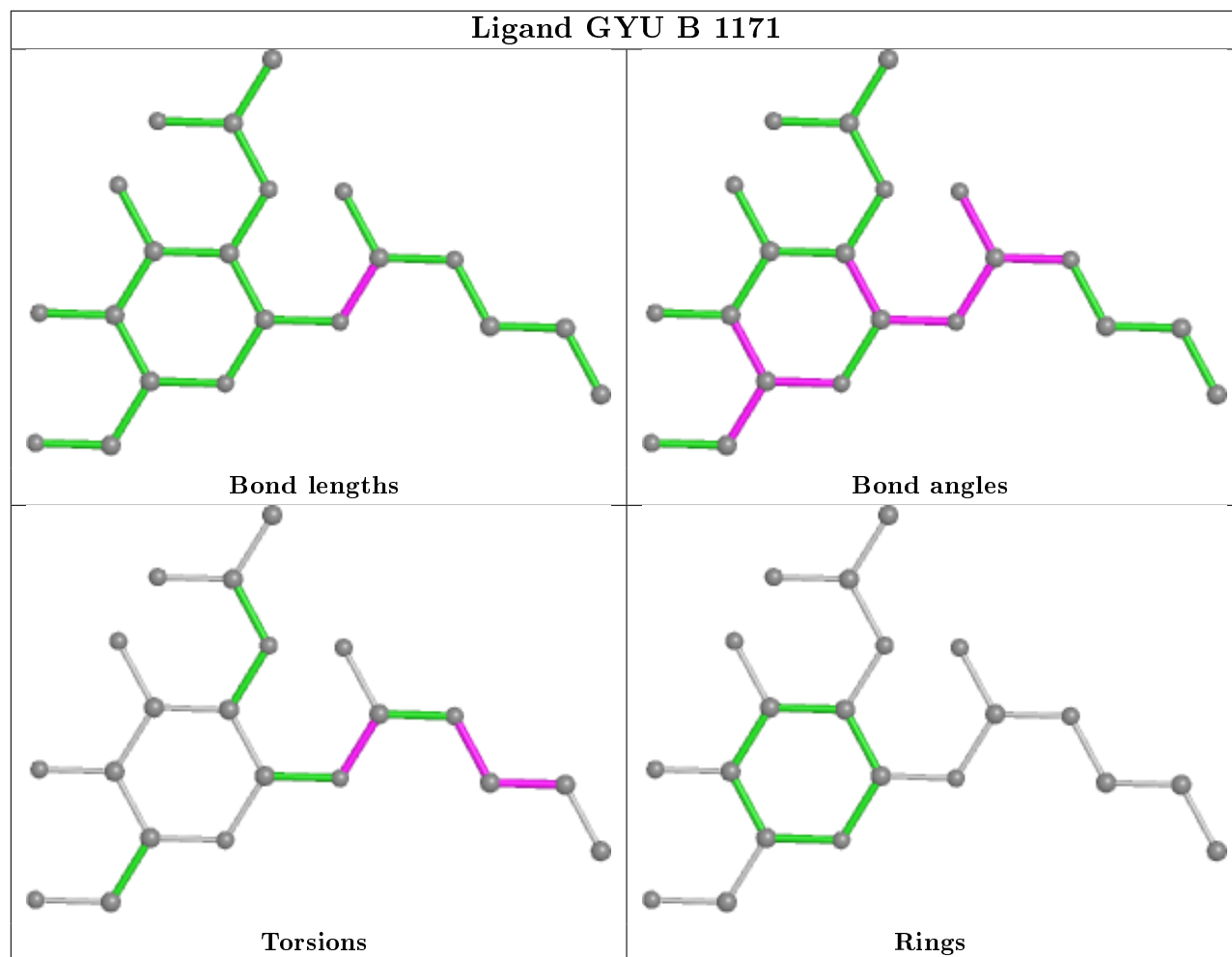
Mol	Chain	Res	Type	Atoms
3	A	1174[B]	GOL	O1-C1-C2-C3
2	B	1171	GYU	NAC-C1A-O1-C1
2	B	1172	GYU	C13-C12-NAC-C1A
3	B	1173[B]	GOL	O1-C1-C2-O2
2	B	1171	GYU	O1A-C1A-O1-C1
3	A	1174[A]	GOL	C1-C2-C3-O3
3	B	1173[A]	GOL	O1-C1-C2-C3
3	B	1173[A]	GOL	O1-C1-C2-O2
3	A	1174[B]	GOL	O1-C1-C2-O2
2	A	1173	GYU	NAC-C12-C13-C14
3	B	1173[B]	GOL	O2-C2-C3-O3
2	B	1171	GYU	NAC-C12-C13-C14
2	A	1172[A]	GYU	NAC-C1A-O1-C1
2	A	1172[B]	GYU	NAC-C1A-O1-C1
2	A	1172[B]	GYU	O5-C5-C6-O6
2	B	1171	GYU	C13-C12-NAC-C1A
2	A	1172[A]	GYU	O1A-C1A-O1-C1
2	A	1172[B]	GYU	O1A-C1A-O1-C1

There are no ring outliers.

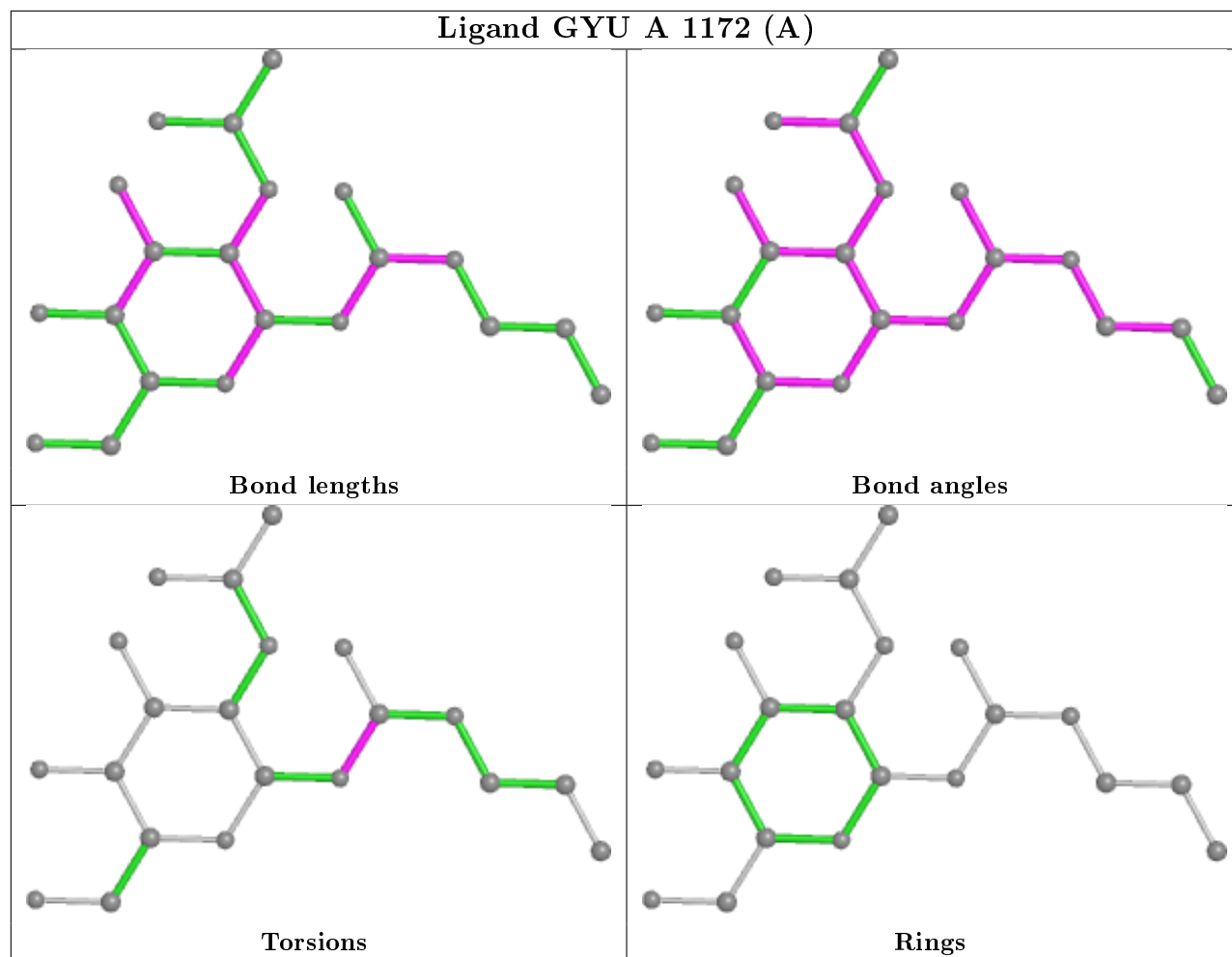
4 monomers are involved in 7 short contacts:

Mol	Chain	Res	Type	Clashes	Symm-Clashes
3	B	1173[B]	GOL	3	0
2	B	1171	GYU	1	0
3	B	1173[A]	GOL	2	0
3	A	1174[B]	GOL	1	0

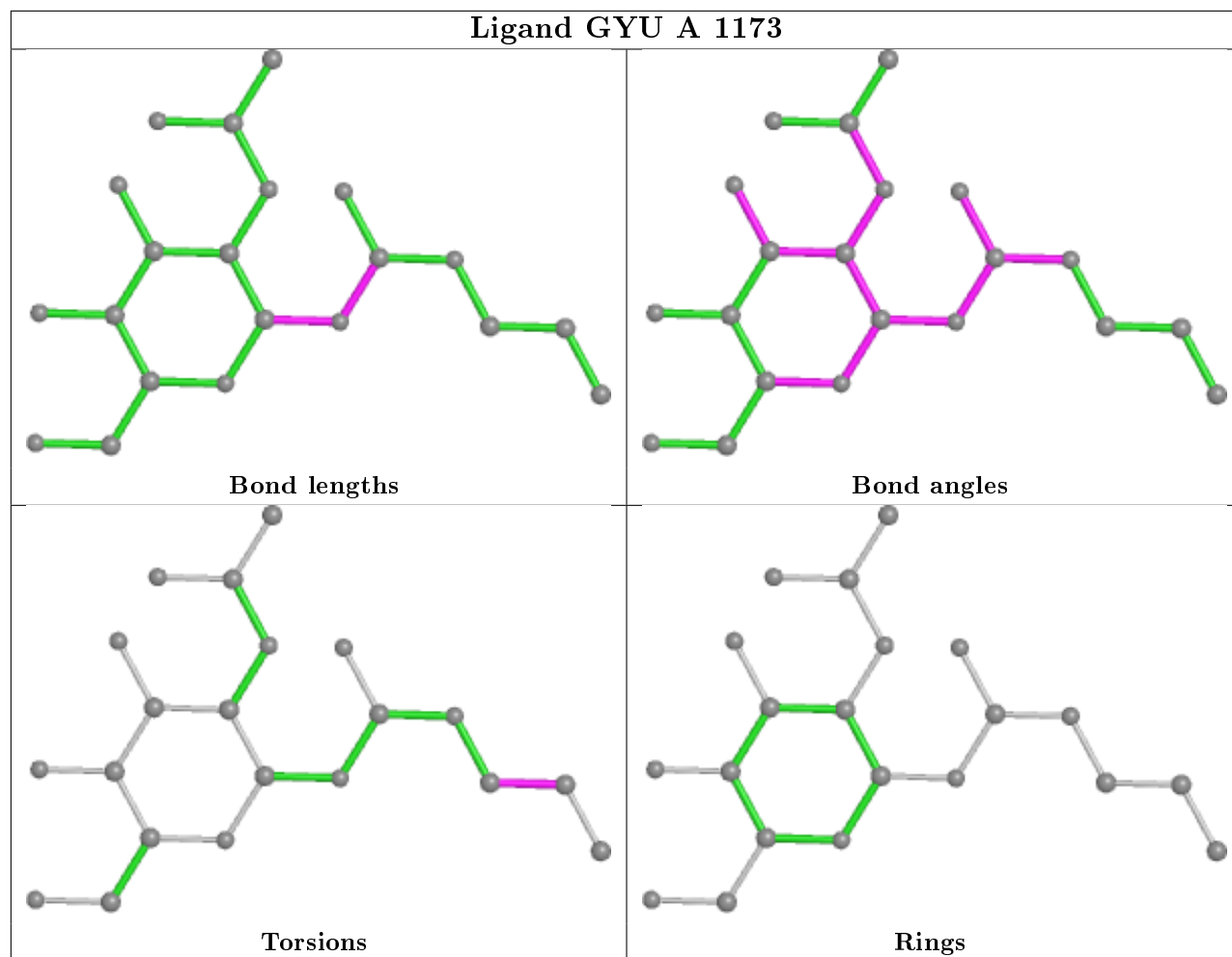
The following is a two-dimensional graphical depiction of Mogul quality analysis of bond lengths, bond angles, torsion angles, and ring geometry for all instances of the Ligand of Interest. In addition, ligands with molecular weight > 250 and outliers as shown on the validation Tables will also be included. For torsion angles, if less than 5% of the Mogul distribution of torsion angles is within 10 degrees of the torsion angle in question, then that torsion angle is considered an outlier. Any bond that is central to one or more torsion angles identified as an outlier by Mogul will be highlighted in the graph. For rings, the root-mean-square deviation (RMSD) between the ring in question and similar rings identified by Mogul is calculated over all ring torsion angles. If the average RMSD is greater than 60 degrees and the minimal RMSD between the ring in question and any Mogul-identified rings is also greater than 60 degrees, then that ring is considered an outlier. The outliers are highlighted in purple. The color gray indicates Mogul did not find sufficient equivalents in the CSD to analyse the geometry.

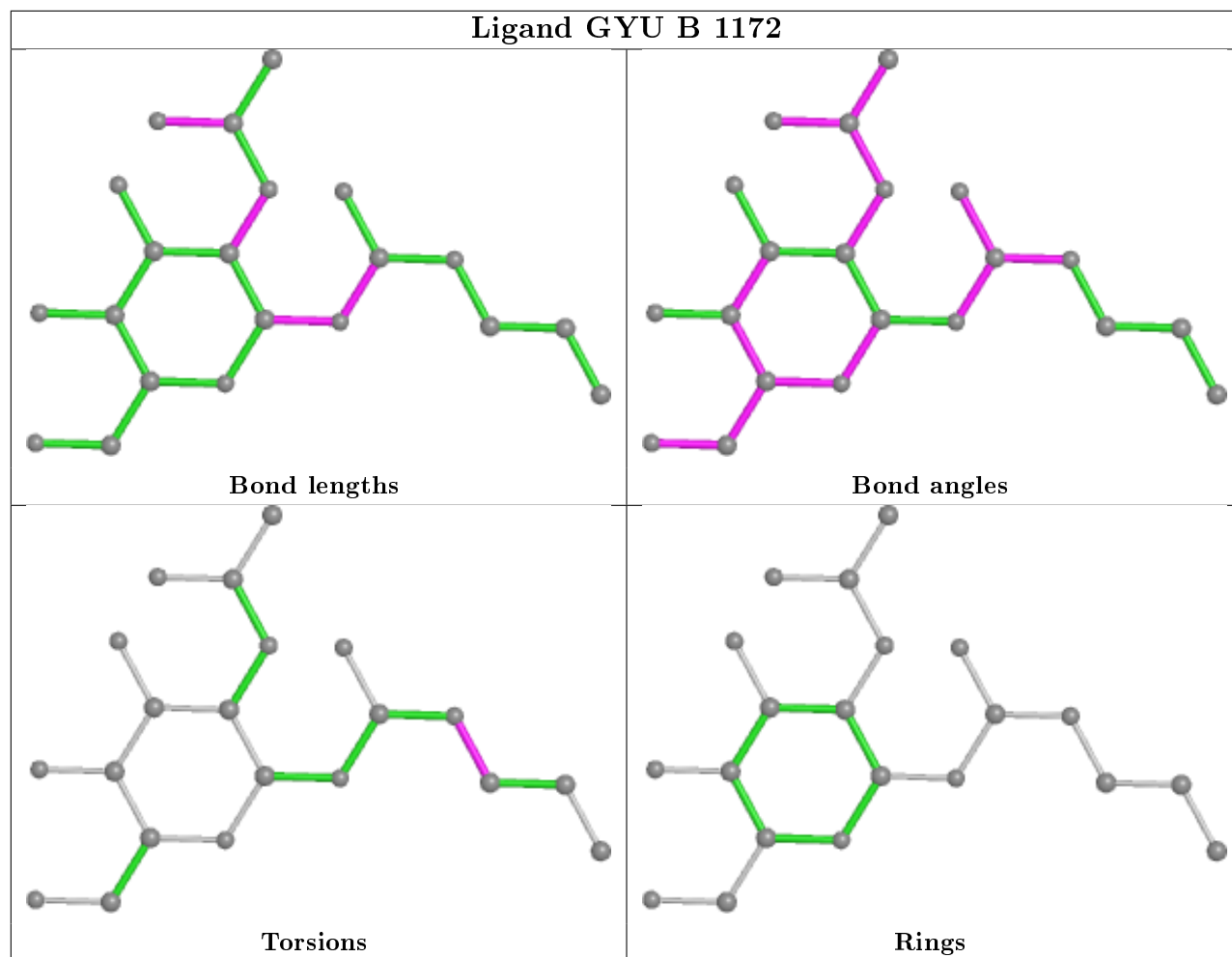


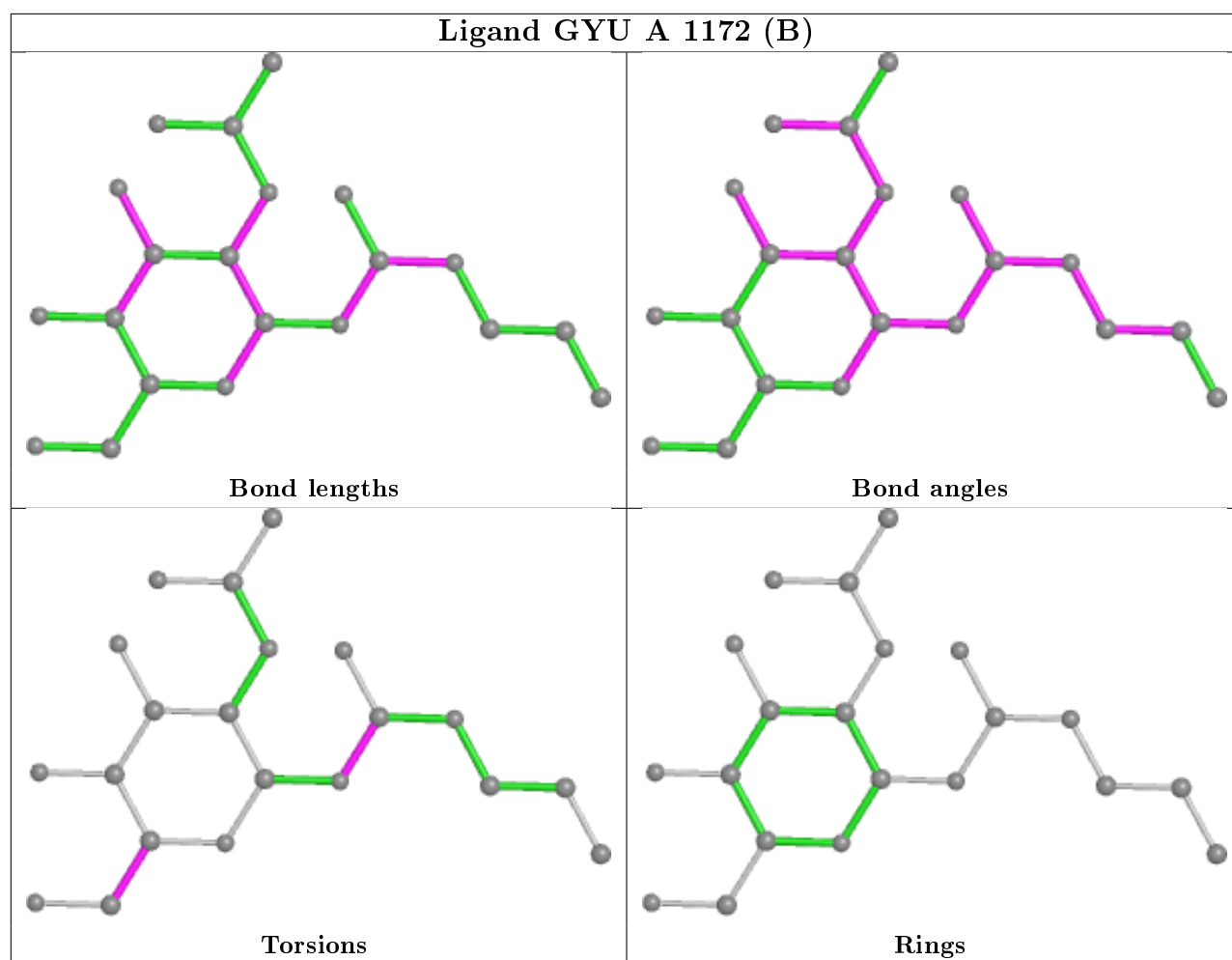
## Ligand GYU A 1172 (A)











## 5.7 Other polymers [i](#)

There are no such residues in this entry.

## 5.8 Polymer linkage issues [i](#)

There are no chain breaks in this entry.

## 6 Fit of model and data [i](#)

### 6.1 Protein, DNA and RNA chains [i](#)

In the following table, the column labelled ‘#RSRZ> 2’ contains the number (and percentage) of RSRZ outliers, followed by percent RSRZ outliers for the chain as percentile scores relative to all X-ray entries and entries of similar resolution. The OWAB column contains the minimum, median, 95<sup>th</sup> percentile and maximum values of the occupancy-weighted average B-factor per residue. The column labelled ‘Q< 0.9’ lists the number of (and percentage) of residues with an average occupancy less than 0.9.

Mol	Chain	Analysed	<RSRZ>	#RSRZ>2	OWAB(Å <sup>2</sup> )	Q<0.9
1	A	170/171 (99%)	-0.09	3 (1%) 68 67	19, 31, 50, 68	0
1	B	169/171 (98%)	-0.02	2 (1%) 79 78	20, 33, 50, 56	0
All	All	339/342 (99%)	-0.05	5 (1%) 73 73	19, 32, 50, 68	0

All (5) RSRZ outliers are listed below:

Mol	Chain	Res	Type	RSRZ
1	B	150	TRP	4.8
1	A	150	TRP	3.3
1	A	107	TRP	2.8
1	A	161	GLY	2.7
1	B	21	TYR	2.3

### 6.2 Non-standard residues in protein, DNA, RNA chains [i](#)

In the following table, the Atoms column lists the number of modelled atoms in the group and the number defined in the chemical component dictionary. The B-factors column lists the minimum, median, 95<sup>th</sup> percentile and maximum values of B factors of atoms in the group. The column labelled ‘Q< 0.9’ lists the number of atoms with occupancy less than 0.9.

Mol	Type	Chain	Res	Atoms	RSCC	RSR	B-factors(Å <sup>2</sup> )	Q<0.9
1	PCA	A	1	8/9	0.95	0.10	32,33,35,36	0
1	PCA	B	1	8/9	0.95	0.07	27,28,31,32	0

### 6.3 Carbohydrates [i](#)

There are no monosaccharides in this entry.

## 6.4 Ligands

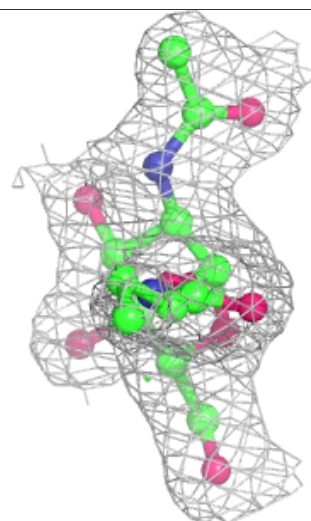
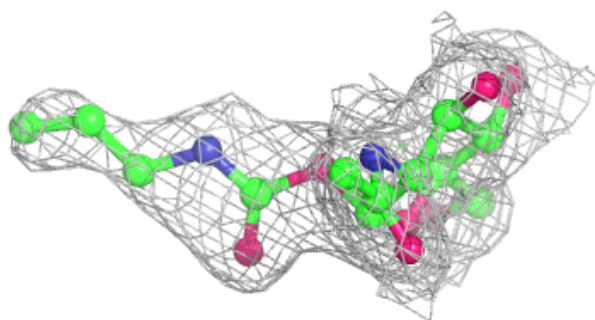
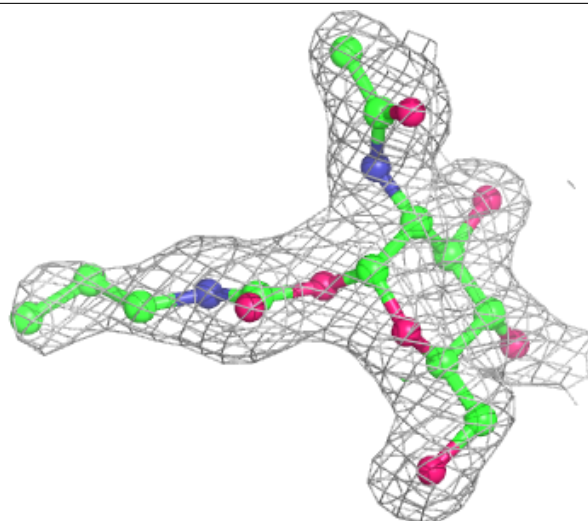
In the following table, the Atoms column lists the number of modelled atoms in the group and the number defined in the chemical component dictionary. The B-factors column lists the minimum, median, 95<sup>th</sup> percentile and maximum values of B factors of atoms in the group. The column labelled 'Q< 0.9' lists the number of atoms with occupancy less than 0.9.

Mol	Type	Chain	Res	Atoms	RSCC	RSR	B-factors(Å <sup>2</sup> )	Q<0.9
3	GOL	B	1173[B]	6/6	0.76	0.27	22,32,38,40	6
3	GOL	B	1173[A]	6/6	0.76	0.27	26,31,32,32	6
2	GYU	A	1173	21/21	0.92	0.11	31,37,47,49	0
3	GOL	A	1174[A]	6/6	0.93	0.17	31,33,37,38	6
2	GYU	B	1171	21/21	0.93	0.12	35,42,59,62	0
3	GOL	A	1174[B]	6/6	0.93	0.17	37,38,41,41	6
2	GYU	B	1172	21/21	0.95	0.07	23,27,35,40	0
2	GYU	A	1172[B]	21/21	0.95	0.09	17,21,25,27	3
2	GYU	A	1172[A]	21/21	0.95	0.09	17,22,25,27	3

The following is a graphical depiction of the model fit to experimental electron density of all instances of the Ligand of Interest. In addition, ligands with molecular weight > 250 and outliers as shown on the geometry validation Tables will also be included. Each fit is shown from different orientation to approximate a three-dimensional view.

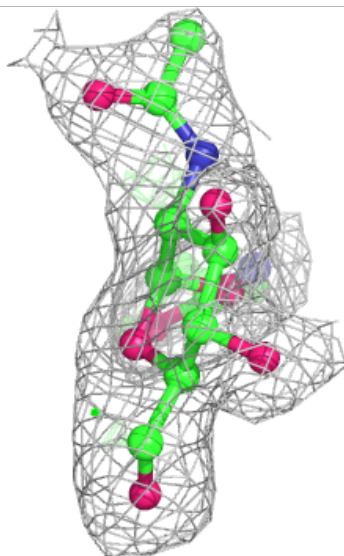
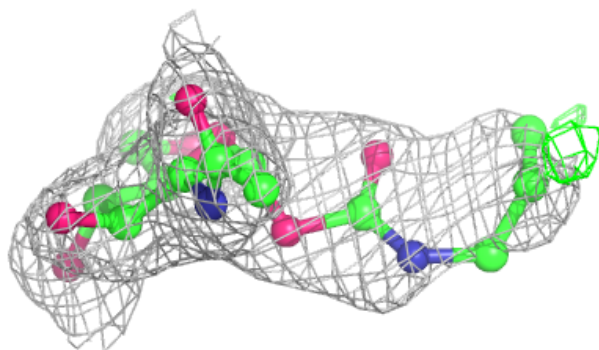
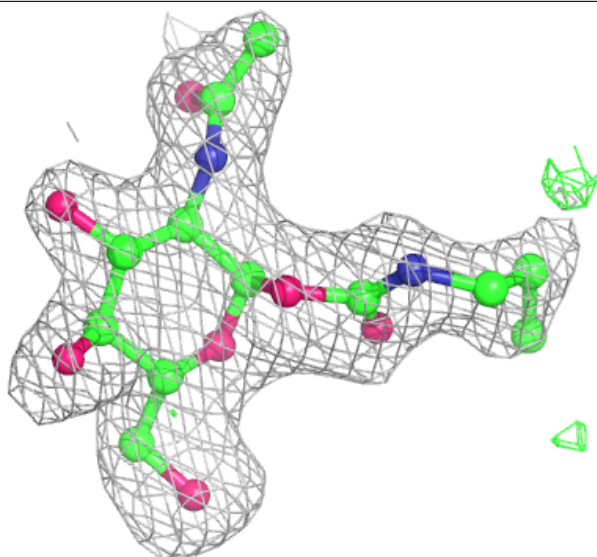
**Electron density around GYU A 1173:**

$2mF_o-DF_c$  (at 0.7 rmsd) in gray  
 $mF_o-DF_c$  (at 3 rmsd) in purple (negative)  
and green (positive)



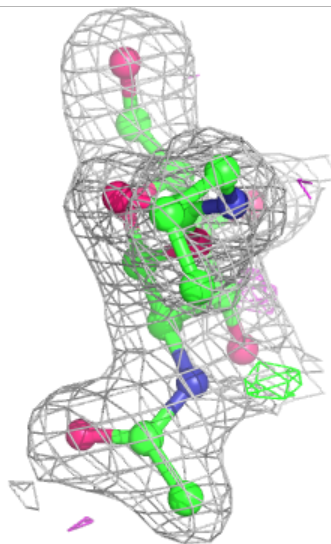
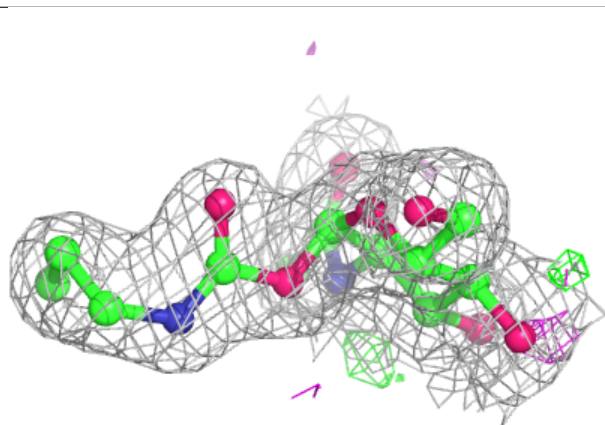
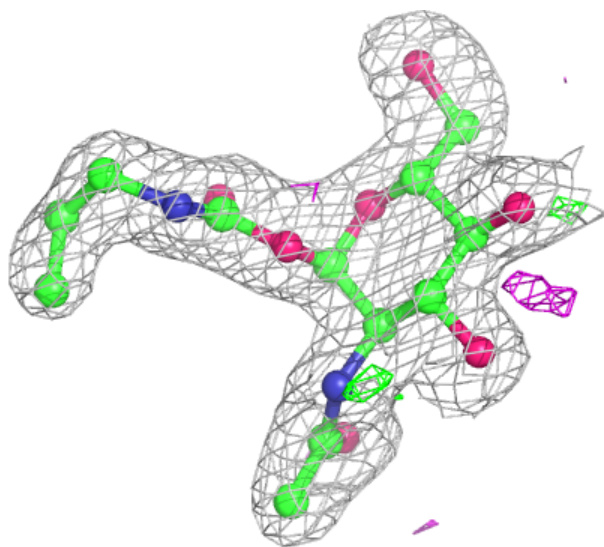
**Electron density around GYU B 1171:**

$2mF_o-DF_c$  (at 0.7 rmsd) in gray  
 $mF_o-DF_c$  (at 3 rmsd) in purple (negative)  
and green (positive)



**Electron density around GYU B 1172:**

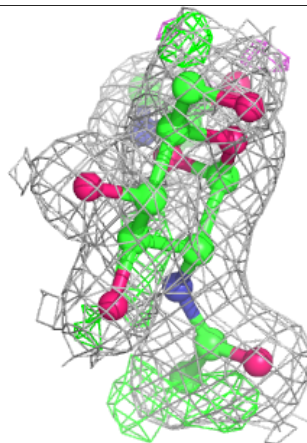
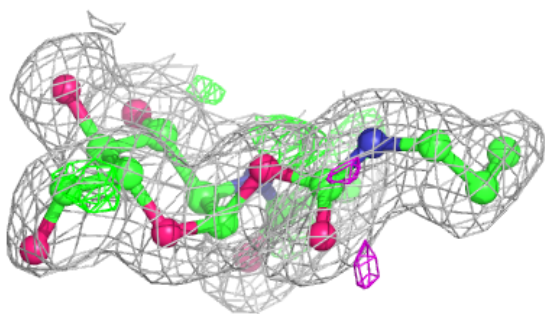
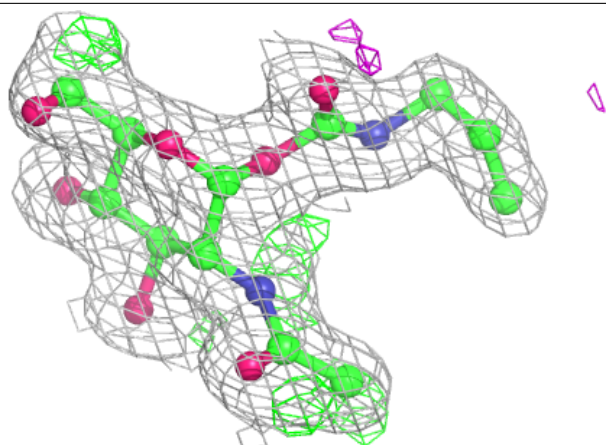
$2mF_o-DF_c$  (at 0.7 rmsd) in gray  
 $mF_o-DF_c$  (at 3 rmsd) in purple (negative)  
and green (positive)





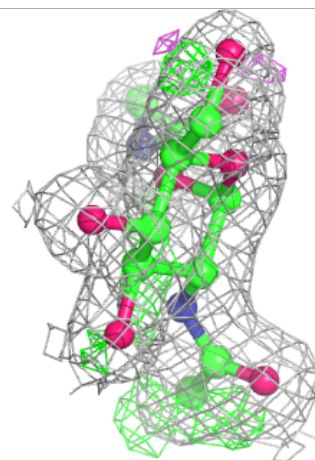
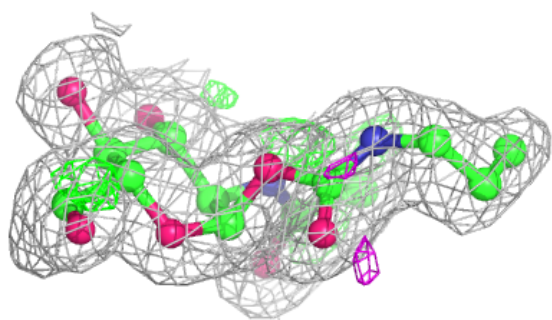
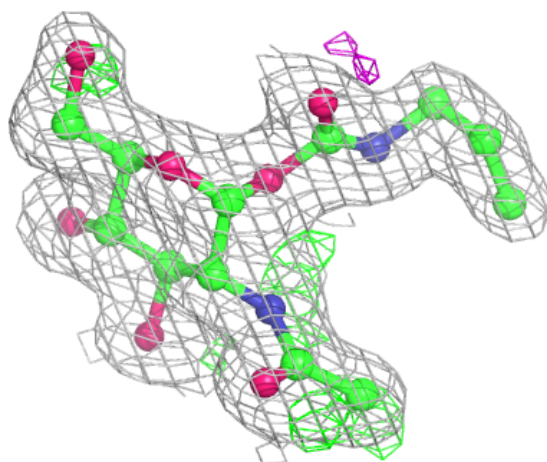
**Electron density around GYU A 1172 (B):**

$2mF_o - DF_c$  (at 0.7 rmsd) in gray  
 $mF_o - DF_c$  (at 3 rmsd) in purple (negative)  
and green (positive)



**Electron density around GYU A 1172 (A):**

$2mF_o-DF_c$  (at 0.7 rmsd) in gray  
 $mF_o-DF_c$  (at 3 rmsd) in purple (negative)  
and green (positive)



## 6.5 Other polymers ⓘ

There are no such residues in this entry.