



# Full wwPDB X-ray Structure Validation Report ⓘ

May 13, 2020 – 07:07 am BST

PDB ID : 5AN1  
Title : Crystallographic structure of the Glutathione S-Transferase from *Litopenaeus vannamei* complexed with Glutathione  
Authors : Juarez-Martinez, A.B.; Sotelo-Mundo, R.; Rudino-Pinera, E.  
Deposited on : 2015-09-02  
Resolution : 2.00 Å(reported)

This is a Full wwPDB X-ray Structure Validation Report for a publicly released PDB entry.

We welcome your comments at [validation@mail.wwpdb.org](mailto:validation@mail.wwpdb.org)

A user guide is available at

<https://www.wwpdb.org/validation/2017/XrayValidationReportHelp>

with specific help available everywhere you see the ⓘ symbol.

---

The following versions of software and data (see [references ⓘ](#)) were used in the production of this report:

MolProbity	:	4.02b-467
Mogul	:	1.8.5 (274361), CSD as541be (2020)
Xtriage (Phenix)	:	1.13
EDS	:	2.11
buster-report	:	1.1.7 (2018)
Percentile statistics	:	20191225.v01 (using entries in the PDB archive December 25th 2019)
Refmac	:	5.8.0158
CCP4	:	7.0.044 (Gargrove)
Ideal geometry (proteins)	:	Engh & Huber (2001)
Ideal geometry (DNA, RNA)	:	Parkinson et al. (1996)
Validation Pipeline (wwPDB-VP)	:	2.11

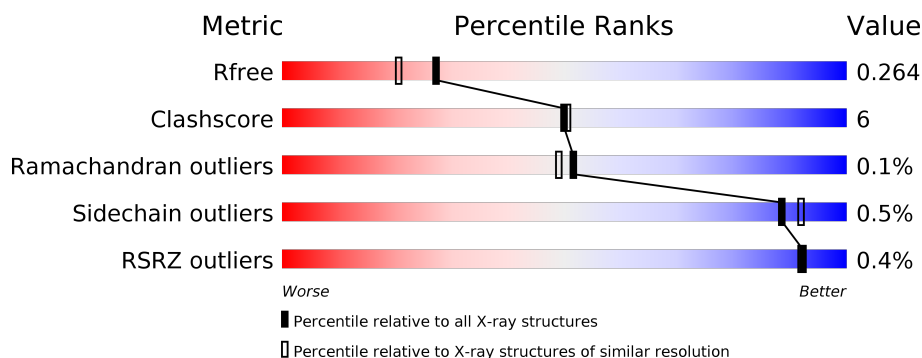
# 1 Overall quality at a glance

The following experimental techniques were used to determine the structure:

*X-RAY DIFFRACTION*

The reported resolution of this entry is 2.00 Å.

Percentile scores (ranging between 0-100) for global validation metrics of the entry are shown in the following graphic. The table shows the number of entries on which the scores are based.



Metric	Whole archive (#Entries)	Similar resolution (#Entries, resolution range(Å))
$R_{free}$	130704	8085 (2.00-2.00)
Clashscore	141614	9178 (2.00-2.00)
Ramachandran outliers	138981	9054 (2.00-2.00)
Sidechain outliers	138945	9053 (2.00-2.00)
RSRZ outliers	127900	7900 (2.00-2.00)

The table below summarises the geometric issues observed across the polymeric chains and their fit to the electron density. The red, orange, yellow and green segments on the lower bar indicate the fraction of residues that contain outliers for  $\geq 3$ , 2, 1 and 0 types of geometric quality criteria respectively. A grey segment represents the fraction of residues that are not modelled. The numeric value for each fraction is indicated below the corresponding segment, with a dot representing fractions  $\leq 5\%$ . The upper red bar (where present) indicates the fraction of residues that have poor fit to the electron density. The numeric value is given above the bar.

Mol	Chain	Length	Quality of chain
1	A	219	<div> <div>88%</div> <div>11%</div> <div>.</div> </div>
1	B	219	<div> <div>93%</div> <div>7%</div> </div>
1	C	219	<div> <div>90%</div> <div>10%</div> </div>
1	D	219	<div> <div>87%</div> <div>13%</div> </div>
1	E	219	<div> <div>%</div> <div>83%</div> <div>16%</div> <div>.</div> </div>
1	F	219	<div> <div>85%</div> <div>15%</div> </div>

*Continued on next page...*

Continued from previous page...

Mol	Chain	Length	Quality of chain
1	G	219	<div><div></div><div>89%</div><div>11%</div></div>
1	H	219	<div>%<div><div></div><div>84%</div><div>16%</div></div></div>

## 2 Entry composition

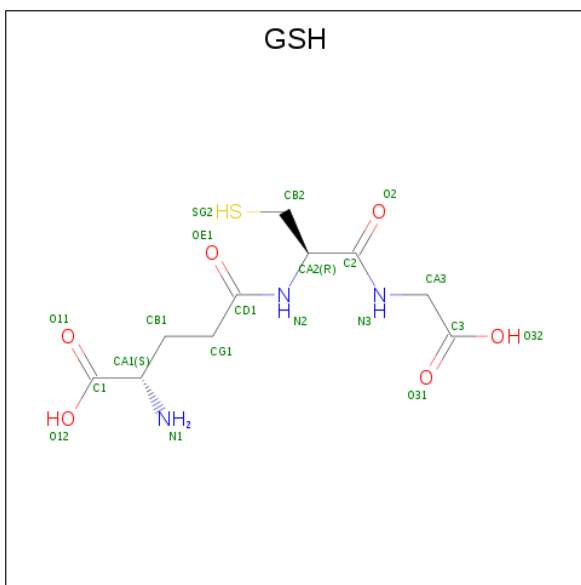
There are 3 unique types of molecules in this entry. The entry contains 16635 atoms, of which 0 are hydrogens and 0 are deuteriums.

In the tables below, the ZeroOcc column contains the number of atoms modelled with zero occupancy, the AltConf column contains the number of residues with at least one atom in alternate conformation and the Trace column contains the number of residues modelled with at most 2 atoms.

- Molecule 1 is a protein called GLUTATHIONE S-TRANSFERASE.

Mol	Chain	Residues	Atoms					ZeroOcc	AltConf	Trace
1	A	219	Total	C	N	O	S	0	1	0
			1809	1178	292	328	11			
1	B	219	Total	C	N	O	S	0	1	0
			1811	1178	294	328	11			
1	C	218	Total	C	N	O	S	0	1	0
			1801	1173	291	327	10			
1	D	218	Total	C	N	O	S	0	0	0
			1792	1167	289	326	10			
1	E	219	Total	C	N	O	S	0	0	0
			1800	1172	290	327	11			
1	F	219	Total	C	N	O	S	0	0	0
			1800	1172	290	327	11			
1	G	218	Total	C	N	O	S	0	1	0
			1800	1173	290	327	10			
1	H	219	Total	C	N	O	S	0	1	0
			1806	1175	291	329	11			

- Molecule 2 is GLUTATHIONE (three-letter code: GSH) (formula: C<sub>10</sub>H<sub>17</sub>N<sub>3</sub>O<sub>6</sub>S).



Mol	Chain	Residues	Atoms					ZeroOcc	AltConf
2	A	1	Total 20	C 10	N 3	O 6	S 1	0	0
2	B	1	Total 20	C 10	N 3	O 6	S 1	0	0
2	C	1	Total 40	C 20	N 6	O 12	S 2	0	1
2	D	1	Total 20	C 10	N 3	O 6	S 1	0	0
2	E	1	Total 20	C 10	N 3	O 6	S 1	0	0
2	F	1	Total 20	C 10	N 3	O 6	S 1	0	0
2	G	1	Total 20	C 10	N 3	O 6	S 1	0	0
2	H	1	Total 20	C 10	N 3	O 6	S 1	0	0

- Molecule 3 is water.

Mol	Chain	Residues	Atoms	ZeroOcc	AltConf
3	A	301	Total O 301 301	0	0
3	B	290	Total O 290 290	0	0
3	C	297	Total O 297 297	0	0
3	D	298	Total O 298 298	0	0

*Continued on next page...*

*Continued from previous page...*

Mol	Chain	Residues	Atoms		ZeroOcc	AltConf
3	E	180	Total 180	O 180	0	0
3	F	251	Total 251	O 251	0	0
3	G	220	Total 220	O 220	0	0
3	H	199	Total 199	O 199	0	0

### 3 Residue-property plots [i](#)

These plots are drawn for all protein, RNA and DNA chains in the entry. The first graphic for a chain summarises the proportions of the various outlier classes displayed in the second graphic. The second graphic shows the sequence view annotated by issues in geometry and electron density. Residues are color-coded according to the number of geometric quality criteria for which they contain at least one outlier: green = 0, yellow = 1, orange = 2 and red = 3 or more. A red dot above a residue indicates a poor fit to the electron density ( $RSRZ > 2$ ). Stretches of 2 or more consecutive residues without any outlier are shown as a green connector. Residues present in the sample, but not in the model, are shown in grey.

#### • Molecule 1: GLUTATHIONE S-TRANSFERASE

Chain A: 




#### • Molecule 1: GLUTATHIONE S-TRANSFERASE

Chain B: 




#### • Molecule 1: GLUTATHIONE S-TRANSFERASE

Chain C: 




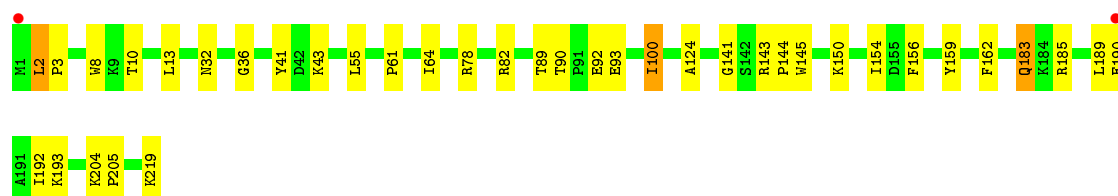
#### • Molecule 1: GLUTATHIONE S-TRANSFERASE

Chain D: 




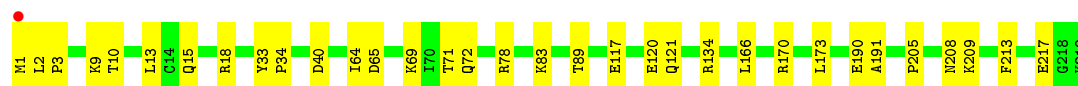
#### • Molecule 1: GLUTATHIONE S-TRANSFERASE

Chain E: 



- Molecule 1: GLUTATHIONE S-TRANSFERASE

Chain F:  85% 15%




- Molecule 1: GLUTATHIONE S-TRANSFERASE

Chain G:  89% 11%



- Molecule 1: GLUTATHIONE S-TRANSFERASE

Chain H:  84% 16%





## 4 Data and refinement statistics

Property	Value	Source
Space group	P 1 21 1	Depositor
Cell constants a, b, c, $\alpha$ , $\beta$ , $\gamma$	62.02Å 101.94Å 166.59Å 90.00° 90.07° 90.00°	Depositor
Resolution (Å)	38.36 – 2.00 44.73 – 1.80	Depositor EDS
% Data completeness (in resolution range)	96.8 (38.36-2.00) 86.7 (44.73-1.80)	Depositor EDS
$R_{merge}$	0.10	Depositor
$R_{sym}$	(Not available)	Depositor
$\langle I/\sigma(I) \rangle$ <sup>1</sup>	1.35 (at 1.81Å)	Xtriage
Refinement program	PHENIX (PHENIX.REFINE)	Depositor
R, $R_{free}$	0.214 , 0.262 0.217 , 0.264	Depositor DCC
$R_{free}$ test set	2529 reflections (1.52%)	wwPDB-VP
Wilson B-factor (Å <sup>2</sup> )	19.7	Xtriage
Anisotropy	0.278	Xtriage
Bulk solvent $k_{sol}$ (e/Å <sup>3</sup> ), $B_{sol}$ (Å <sup>2</sup> )	0.28 , 24.2	EDS
L-test for twinning <sup>2</sup>	$\langle  L  \rangle = 0.49$ , $\langle L^2 \rangle = 0.33$	Xtriage
Estimated twinning fraction	0.219 for h,-k,-l	Xtriage
$F_o, F_c$ correlation	0.95	EDS
Total number of atoms	16635	wwPDB-VP
Average B, all atoms (Å <sup>2</sup> )	23.0	wwPDB-VP

Xtriage's analysis on translational NCS is as follows: *The analyses of the Patterson function reveals a significant off-origin peak that is 41.59 % of the origin peak, indicating pseudo-translational symmetry. The chance of finding a peak of this or larger height randomly in a structure without pseudo-translational symmetry is equal to 2.3091e-04. The detected translational NCS is most likely also responsible for the elevated intensity ratio.*

<sup>1</sup> Intensities estimated from amplitudes.

<sup>2</sup> Theoretical values of  $\langle |L| \rangle$ ,  $\langle L^2 \rangle$  for acentric reflections are 0.5, 0.333 respectively for untwinned datasets, and 0.375, 0.2 for perfectly twinned datasets.

## 5 Model quality [i](#)

### 5.1 Standard geometry [i](#)

Bond lengths and bond angles in the following residue types are not validated in this section: GSH

The Z score for a bond length (or angle) is the number of standard deviations the observed value is removed from the expected value. A bond length (or angle) with  $|Z| > 5$  is considered an outlier worth inspection. RMSZ is the root-mean-square of all Z scores of the bond lengths (or angles).

Mol	Chain	Bond lengths		Bond angles	
		RMSZ	# Z  >5	RMSZ	# Z  >5
1	A	0.56	0/1858	0.74	5/2507 (0.2%)
1	B	0.44	0/1860	0.56	0/2510
1	C	0.44	0/1850	0.56	0/2497
1	D	0.45	0/1841	0.56	0/2486
1	E	0.39	0/1849	0.56	1/2496 (0.0%)
1	F	0.42	0/1849	0.54	0/2496
1	G	0.42	0/1849	0.54	0/2497
1	H	0.40	0/1855	0.54	0/2504
All	All	0.44	0/14811	0.58	6/19993 (0.0%)

Chiral center outliers are detected by calculating the chiral volume of a chiral center and verifying if the center is modelled as a planar moiety or with the opposite hand. A planarity outlier is detected by checking planarity of atoms in a peptide group, atoms in a mainchain group or atoms of a sidechain that are expected to be planar.

Mol	Chain	#Chirality outliers	#Planarity outliers
1	A	0	3
1	E	0	1
All	All	0	4

There are no bond length outliers.

All (6) bond angle outliers are listed below:

Mol	Chain	Res	Type	Atoms	Z	Observed(°)	Ideal(°)
1	A	184[A]	LYS	O-C-N	10.96	140.23	122.70
1	A	184[B]	LYS	O-C-N	10.96	140.23	122.70
1	A	184[A]	LYS	CA-C-N	-8.34	98.85	117.20
1	A	184[B]	LYS	CA-C-N	-8.34	98.85	117.20
1	A	183	GLN	O-C-N	-6.54	112.23	122.70
1	E	183	GLN	CA-CB-CG	-5.20	101.97	113.40

There are no chirality outliers.

All (4) planarity outliers are listed below:

Mol	Chain	Res	Type	Group
1	A	183	GLN	Mainchain
1	A	184[B]	LYS	Mainchain
1	E	2	LEU	Peptide

## 5.2 Too-close contacts

In the following table, the Non-H and H(model) columns list the number of non-hydrogen atoms and hydrogen atoms in the chain respectively. The H(added) column lists the number of hydrogen atoms added and optimized by MolProbity. The Clashes column lists the number of clashes within the asymmetric unit, whereas Symm-Clashes lists symmetry related clashes.

Mol	Chain	Non-H	H(model)	H(added)	Clashes	Symm-Clashes
1	A	1809	0	1794	19	0
1	B	1811	0	1794	11	0
1	C	1801	0	1782	14	0
1	D	1792	0	1770	24	0
1	E	1800	0	1782	34	0
1	F	1800	0	1782	21	0
1	G	1800	0	1780	20	0
1	H	1806	0	1786	27	0
2	A	20	0	15	1	0
2	B	20	0	15	0	0
2	C	40	0	30	1	0
2	D	20	0	15	0	0
2	E	20	0	15	0	0
2	F	20	0	15	0	0
2	G	20	0	15	1	0
2	H	20	0	15	0	0
3	A	301	0	0	10	0
3	B	290	0	0	4	0
3	C	297	0	0	5	0
3	D	298	0	0	13	0
3	E	180	0	0	11	0
3	F	251	0	0	9	0
3	G	220	0	0	7	0
3	H	199	0	0	11	0
All	All	16635	0	14405	169	0

The all-atom clashscore is defined as the number of clashes found per 1000 atoms (including hydrogen atoms). The all-atom clashscore for this structure is 6.

All (169) close contacts within the same asymmetric unit are listed below, sorted by their clash magnitude.

Atom-1	Atom-2	Interatomic distance (Å)	Clash overlap (Å)
1:D:78:ARG:NH2	3:D:2148:HOH:O	2.07	0.87
1:E:145:TRP:O	3:E:2135:HOH:O	1.93	0.86
1:B:40:ASP:OD1	3:B:2053:HOH:O	1.94	0.85
1:E:156:PHE:O	3:E:2140:HOH:O	2.02	0.77
1:E:90:THR:HB	1:E:93:GLU:HG3	1.66	0.76
1:A:121:GLN:NE2	3:A:2202:HOH:O	2.18	0.76
1:G:50:LYS:NZ	3:G:2079:HOH:O	2.18	0.75
1:E:143:ARG:HD3	3:E:2135:HOH:O	1.87	0.73
1:E:90:THR:HG22	1:E:92:GLU:H	1.53	0.73
1:H:91:PRO:O	3:H:2108:HOH:O	2.05	0.73
1:A:62:TYR:OH	3:A:2053:HOH:O	2.05	0.72
1:G:2:LEU:N	3:G:2002:HOH:O	2.22	0.72
1:H:135:GLN:NE2	3:H:2114:HOH:O	2.14	0.72
1:H:191:ALA:O	3:H:2170:HOH:O	2.08	0.72
1:A:15:GLN:OE1	3:A:2009:HOH:O	2.08	0.71
3:A:2119:HOH:O	1:H:103:GLN:OE1	2.07	0.71
1:F:9:LYS:NZ	3:F:2014:HOH:O	2.24	0.71
2:C:1220[A]:GSH:HA32	2:C:1220[A]:GSH:HB22	1.72	0.70
1:D:197:ALA:O	3:D:2273:HOH:O	2.09	0.70
1:F:65:ASP:OD2	3:F:2111:HOH:O	2.09	0.68
1:G:40:ASP:OD1	3:G:2051:HOH:O	2.11	0.68
1:F:117:GLU:OE2	3:F:2162:HOH:O	2.12	0.67
1:D:78:ARG:NH1	3:D:2147:HOH:O	2.08	0.67
1:E:55:LEU:HD21	1:E:64:ILE:HD11	1.78	0.66
1:H:120:GLU:HG3	1:H:121:GLN:HG3	1.78	0.65
1:E:82:ARG:O	3:E:2091:HOH:O	2.13	0.65
1:A:118:HIS:NE2	3:A:2199:HOH:O	2.30	0.64
1:B:190:GLU:OE2	1:D:177:LYS:NZ	2.31	0.63
1:C:2:LEU:N	3:C:2001:HOH:O	2.31	0.63
1:H:8:TRP:CZ2	1:H:43:LYS:HE2	2.33	0.63
1:F:134:ARG:NH1	3:F:2182:HOH:O	2.31	0.62
1:A:8:TRP:NE1	2:A:1220:GSH:O2	2.21	0.62
1:A:31:LYS:HB3	3:A:2053:HOH:O	2.00	0.62
1:G:64:ILE:HG12	1:G:69:LYS:HG2	1.81	0.61
1:D:169:ASP:OD2	3:D:2206:HOH:O	2.16	0.60
1:H:1:MET:N	3:H:2001:HOH:O	2.32	0.60
1:B:37:ASP:OD2	3:B:2055:HOH:O	2.16	0.60
1:E:162:PHE:HB2	1:E:183:GLN:HE22	1.65	0.60
1:A:18:ARG:NH1	3:A:2009:HOH:O	2.35	0.59
1:E:8:TRP:CH2	1:E:43:LYS:HD3	2.37	0.59

*Continued on next page...*

*Continued from previous page...*

Atom-1	Atom-2	Interatomic distance (Å)	Clash overlap (Å)
1:C:11:ARG:HB2	1:C:206:ILE:HA	1.84	0.59
1:G:13[A]:LEU:HD13	2:G:1220:GSH:SG2	2.43	0.59
1:G:83:LYS:NZ	3:G:2091:HOH:O	2.09	0.58
1:E:162:PHE:HB2	1:E:183:GLN:NE2	2.18	0.58
1:H:10:THR:HG22	1:H:205:PRO:HG2	1.86	0.57
1:A:193:LYS:O	3:A:2274:HOH:O	2.16	0.57
1:C:174:ASP:O	3:C:2245:HOH:O	2.18	0.56
1:C:7:TYR:HA	1:C:60:LEU:HD22	1.87	0.56
1:E:159:TYR:N	3:E:2140:HOH:O	2.38	0.56
1:H:53:LEU:O	3:H:2075:HOH:O	2.18	0.56
1:B:204:LYS:NZ	3:B:2270:HOH:O	2.38	0.56
1:E:36:GLY:O	1:E:41:TYR:HA	2.06	0.56
1:D:2:LEU:HD21	1:D:28:PHE:HA	1.89	0.55
1:G:206:ILE:H	1:G:219:LYS:HD2	1.70	0.55
1:D:7:TYR:HA	1:D:60:LEU:HD22	1.89	0.54
1:A:142:SER:OG	1:D:134:ARG:HD2	2.08	0.54
1:G:204:LYS:NZ	3:G:2205:HOH:O	2.10	0.54
1:G:166:LEU:HD11	1:G:173:LEU:HD12	1.90	0.54
1:A:11:ARG:HB2	1:A:206:ILE:HA	1.88	0.53
1:G:13[B]:LEU:HD22	1:G:112:PHE:CZ	2.43	0.53
1:F:2:LEU:HD12	1:F:3:PRO:HD2	1.89	0.53
1:E:8:TRP:HH2	1:E:43:LYS:HD3	1.72	0.52
1:C:64:ILE:HG23	1:C:69:LYS:HG2	1.92	0.52
1:H:36:GLY:O	1:H:41:TYR:HA	2.09	0.51
1:G:205:PRO:HA	1:G:219:LYS:HB3	1.91	0.51
1:H:213:PHE:CE1	1:H:217:GLU:HG3	2.46	0.51
1:H:32:ASN:O	3:H:2027:HOH:O	2.19	0.51
1:A:134:ARG:HE	1:A:176:PHE:HE1	1.57	0.50
1:B:193:LYS:NZ	3:B:2254:HOH:O	2.41	0.50
1:E:124:ALA:O	3:E:2117:HOH:O	2.20	0.50
1:D:190:GLU:HG3	3:D:2266:HOH:O	2.11	0.50
1:H:8:TRP:CH2	1:H:43:LYS:HE2	2.46	0.50
1:G:145:TRP:CH2	1:G:185:ARG:HG2	2.46	0.50
1:H:120:GLU:CG	1:H:121:GLN:HG3	2.40	0.49
1:E:190:GLU:OE2	3:E:2156:HOH:O	2.19	0.49
1:D:40:ASP:OD1	1:D:40:ASP:N	2.43	0.49
1:C:40:ASP:N	1:C:40:ASP:OD1	2.38	0.49
1:F:78:ARG:HD3	3:F:2127:HOH:O	2.11	0.49
1:D:119:TYR:CZ	1:D:122:LYS:HD2	2.48	0.48
1:E:162:PHE:CB	1:E:183:GLN:NE2	2.76	0.48
1:G:204:LYS:HE3	1:G:219:LYS:OXT	2.13	0.48

*Continued on next page...*

*Continued from previous page...*

Atom-1	Atom-2	Interatomic distance (Å)	Clash overlap (Å)
1:A:79:TYR:CZ	1:A:83:LYS:HE2	2.48	0.48
1:H:207:CYS:SG	3:H:2181:HOH:O	2.59	0.48
1:G:206:ILE:N	1:G:219:LYS:HD2	2.29	0.48
1:F:190:GLU:HG3	1:F:191:ALA:N	2.28	0.48
1:B:7:TYR:HA	1:B:60:LEU:HD22	1.96	0.48
1:F:1:MET:HB3	1:F:2:LEU:H	1.52	0.48
1:A:52:LYS:NZ	3:A:2093:HOH:O	2.46	0.48
1:B:187:GLU:O	1:B:193:LYS:HG2	2.13	0.47
1:E:10:THR:HG22	1:E:205:PRO:HG2	1.95	0.47
1:E:159:TYR:CD1	1:E:183:GLN:OE1	2.68	0.47
1:B:11:ARG:HB2	1:B:206:ILE:HA	1.95	0.47
1:H:195:TYR:N	3:H:2170:HOH:O	2.46	0.47
1:E:204:LYS:HE3	1:E:219:LYS:HA	1.97	0.47
1:E:189:LEU:HB2	1:E:192:ILE:HG12	1.97	0.47
1:B:119:TYR:OH	1:B:122:LYS:HE3	2.15	0.46
1:B:7:TYR:CD2	1:B:14:CYS:HB2	2.50	0.46
1:G:35:VAL:O	1:G:209:LYS:NZ	2.33	0.46
1:F:209:LYS:O	3:F:2237:HOH:O	2.20	0.46
1:F:15:GLN:OE1	1:F:18:ARG:HD2	2.15	0.46
1:C:120:GLU:OE2	3:C:2198:HOH:O	2.21	0.46
1:D:7:TYR:O	1:D:32:ASN:HA	2.16	0.46
1:G:91:PRO:HG2	1:G:92:GLU:OE2	2.14	0.46
1:H:150:LYS:HA	3:H:2149:HOH:O	2.16	0.46
1:D:65:ASP:OD2	1:D:79:TYR:OH	2.30	0.46
3:D:2147:HOH:O	1:E:78:ARG:HD3	2.15	0.46
1:E:89:THR:HG23	1:E:150:LYS:HZ2	1.81	0.46
1:E:2:LEU:HB3	1:E:3:PRO:HD3	1.97	0.46
1:A:166:LEU:HD11	1:A:173:LEU:HD12	1.97	0.46
1:E:90:THR:HG22	1:E:92:GLU:N	2.27	0.46
1:F:64:ILE:HD13	1:F:69:LYS:HG2	1.97	0.45
1:D:121:GLN:OE1	3:D:2203:HOH:O	2.20	0.45
1:H:116:TYR:CZ	1:H:207:CYS:HB3	2.51	0.45
1:H:94:LEU:N	3:H:2108:HOH:O	2.48	0.45
1:D:33:TYR:HA	1:D:34:PRO:HD3	1.84	0.45
1:F:190:GLU:CG	1:F:191:ALA:N	2.79	0.45
1:F:33:TYR:HA	1:F:34:PRO:HD3	1.86	0.45
1:H:11:ARG:HB2	1:H:206:ILE:HA	1.98	0.45
1:H:104:LEU:HD11	1:H:158:ALA:HB2	1.98	0.45
1:E:204:LYS:CE	1:E:219:LYS:HA	2.47	0.45
1:E:32:ASN:ND2	3:E:2032:HOH:O	2.25	0.45
1:F:120:GLU:HG2	1:F:121:GLN:HG3	1.99	0.45

*Continued on next page...*

*Continued from previous page...*

Atom-1	Atom-2	Interatomic distance (Å)	Clash overlap (Å)
1:E:144:PRO:O	1:E:185:ARG:NH1	2.50	0.44
1:C:204:LYS:NZ	3:C:2284:HOH:O	2.47	0.44
1:E:141:GLY:O	3:E:2132:HOH:O	2.21	0.44
1:C:199:PRO:HG2	1:C:200:LYS:HZ2	1.83	0.43
1:C:114:VAL:HG21	1:C:125:TYR:CD1	2.53	0.43
1:D:2:LEU:HD23	1:D:3:PRO:O	2.19	0.43
1:C:2:LEU:HA	1:C:3:PRO:HD3	1.91	0.43
1:D:115:THR:OG1	3:D:2194:HOH:O	2.02	0.43
1:H:194:LYS:HB3	3:H:2170:HOH:O	2.17	0.43
1:D:154:ILE:HD12	1:D:155:ASP:N	2.33	0.43
1:F:10:THR:HG22	1:F:205:PRO:HG2	2.01	0.43
1:C:143:ARG:HD3	1:C:148:GLY:HA2	2.00	0.43
1:B:43:LYS:O	1:B:47:LEU:HG	2.19	0.43
1:E:185:ARG:NH2	3:E:2149:HOH:O	2.49	0.43
1:H:100:ILE:HD12	1:H:139:PHE:CE2	2.54	0.43
1:E:13:LEU:CD1	1:E:61:PRO:HD3	2.48	0.43
1:G:196:MET:HG2	1:G:201:PHE:CE1	2.53	0.43
1:G:2:LEU:HD12	1:G:3:PRO:HD2	2.00	0.43
1:D:177:LYS:HG2	3:D:2246:HOH:O	2.19	0.42
1:F:71:THR:O	1:F:72:GLN:HB2	2.18	0.42
1:H:71:THR:O	1:H:72:GLN:HB2	2.19	0.42
1:F:83:LYS:HG3	3:F:2129:HOH:O	2.18	0.42
1:G:219:LYS:HB2	3:G:2206:HOH:O	2.17	0.42
1:F:40:ASP:OD1	3:F:2060:HOH:O	2.21	0.42
1:A:64:ILE:HD12	1:A:69:LYS:HE3	2.01	0.42
1:D:194:LYS:HG2	3:D:2125:HOH:O	2.19	0.42
1:D:27:GLU:HG2	3:D:2031:HOH:O	2.19	0.42
1:H:116:TYR:CE1	1:H:207:CYS:HB3	2.55	0.42
1:E:189:LEU:O	1:E:193:LYS:HG3	2.20	0.42
1:H:8:TRP:CH2	1:H:43:LYS:HG2	2.54	0.42
1:D:193:LYS:NZ	3:D:2264:HOH:O	2.27	0.42
1:F:166:LEU:HD11	1:F:173:LEU:HD12	2.01	0.42
1:F:213:PHE:CD1	1:F:217:GLU:HG3	2.55	0.42
1:A:118:HIS:O	1:A:121:GLN:HG3	2.20	0.41
1:D:2:LEU:HG	1:D:3:PRO:HD2	2.01	0.41
1:F:190:GLU:HG2	3:F:2219:HOH:O	2.20	0.41
1:H:167:SER:O	1:H:219:LYS:NZ	2.48	0.41
1:C:194:LYS:HD2	3:C:2269:HOH:O	2.19	0.41
1:A:11:ARG:HG2	3:A:2009:HOH:O	2.19	0.41
1:A:140:LEU:HB2	1:A:146:PHE:CE1	2.56	0.41
1:E:185:ARG:NH1	3:E:2149:HOH:O	2.50	0.41

*Continued on next page...*

Continued from previous page...

Atom-1	Atom-2	Interatomic distance (Å)	Clash overlap (Å)
1:G:26:THR:HG21	3:G:2091:HOH:O	2.20	0.41
1:E:89:THR:HG23	1:E:150:LYS:NZ	2.36	0.41
1:C:42:ASP:OD2	1:C:44:SER:OG	2.38	0.41
1:D:27:GLU:OE2	3:D:2038:HOH:O	2.21	0.41
1:E:100:ILE:HG21	1:E:154:ILE:HD13	2.02	0.41
1:A:74:LYS:O	1:A:78:ARG:HG3	2.22	0.40

There are no symmetry-related clashes.

## 5.3 Torsion angles [i](#)

### 5.3.1 Protein backbone [i](#)

In the following table, the Percentiles column shows the percent Ramachandran outliers of the chain as a percentile score with respect to all X-ray entries followed by that with respect to entries of similar resolution.

The Analysed column shows the number of residues for which the backbone conformation was analysed, and the total number of residues.

Mol	Chain	Analysed	Favoured	Allowed	Outliers	Percentiles	
1	A	218/219 (100%)	213 (98%)	5 (2%)	0	100	100
1	B	218/219 (100%)	214 (98%)	4 (2%)	0	100	100
1	C	217/219 (99%)	212 (98%)	5 (2%)	0	100	100
1	D	216/219 (99%)	210 (97%)	5 (2%)	1 (0%)	29	23
1	E	217/219 (99%)	212 (98%)	5 (2%)	0	100	100
1	F	217/219 (99%)	213 (98%)	4 (2%)	0	100	100
1	G	217/219 (99%)	211 (97%)	6 (3%)	0	100	100
1	H	218/219 (100%)	213 (98%)	5 (2%)	0	100	100
All	All	1738/1752 (99%)	1698 (98%)	39 (2%)	1 (0%)	51	49

All (1) Ramachandran outliers are listed below:

Mol	Chain	Res	Type
1	D	72	GLN



### 5.3.2 Protein sidechains ⓘ

In the following table, the Percentiles column shows the percent sidechain outliers of the chain as a percentile score with respect to all X-ray entries followed by that with respect to entries of similar resolution.

The Analysed column shows the number of residues for which the sidechain conformation was analysed, and the total number of residues.

Mol	Chain	Analysed	Rotameric	Outliers	Percentiles	
1	A	192/191 (100%)	191 (100%)	1 (0%)	88	92
1	B	192/191 (100%)	192 (100%)	0	100	100
1	C	191/191 (100%)	191 (100%)	0	100	100
1	D	190/191 (100%)	189 (100%)	1 (0%)	88	92
1	E	191/191 (100%)	190 (100%)	1 (0%)	88	92
1	F	191/191 (100%)	187 (98%)	4 (2%)	53	57
1	G	191/191 (100%)	191 (100%)	0	100	100
1	H	192/191 (100%)	191 (100%)	1 (0%)	88	92
All	All	1530/1528 (100%)	1522 (100%)	8 (0%)	88	92

All (8) residues with a non-rotameric sidechain are listed below:

Mol	Chain	Res	Type
1	A	1	MET
1	D	13	LEU
1	E	100	ILE
1	F	13	LEU
1	F	89	THR
1	F	170	ARG
1	F	208	ASN
1	H	208	ASN

Some sidechains can be flipped to improve hydrogen bonding and reduce clashes. All (2) such sidechains are listed below:

Mol	Chain	Res	Type
1	A	121	GLN
1	E	183	GLN

### 5.3.3 RNA ⓘ

There are no RNA molecules in this entry.

## 5.4 Non-standard residues in protein, DNA, RNA chains ⓘ

There are no non-standard protein/DNA/RNA residues in this entry.

## 5.5 Carbohydrates ⓘ

There are no carbohydrates in this entry.

## 5.6 Ligand geometry ⓘ

9 ligands are modelled in this entry.

In the following table, the Counts columns list the number of bonds (or angles) for which Mogul statistics could be retrieved, the number of bonds (or angles) that are observed in the model and the number of bonds (or angles) that are defined in the Chemical Component Dictionary. The Link column lists molecule types, if any, to which the group is linked. The Z score for a bond length (or angle) is the number of standard deviations the observed value is removed from the expected value. A bond length (or angle) with  $|Z| > 2$  is considered an outlier worth inspection. RMSZ is the root-mean-square of all Z scores of the bond lengths (or angles).

Mol	Type	Chain	Res	Link	Bond lengths			Bond angles		
					Counts	RMSZ	# Z  > 2	Counts	RMSZ	# Z  > 2
2	GSH	C	1220[A]	-	12,19,19	2.10	2 (16%)	15,24,24	3.42	8 (53%)
2	GSH	H	1220	-	12,19,19	1.99	2 (16%)	15,24,24	1.64	4 (26%)
2	GSH	B	1220	-	12,19,19	1.86	2 (16%)	15,24,24	1.51	4 (26%)
2	GSH	F	1220	-	12,19,19	2.02	3 (25%)	15,24,24	3.24	8 (53%)
2	GSH	A	1220	-	12,19,19	2.08	3 (25%)	15,24,24	3.03	8 (53%)
2	GSH	D	1220	-	12,19,19	1.99	2 (16%)	15,24,24	2.92	5 (33%)
2	GSH	G	1220	-	12,19,19	1.90	3 (25%)	15,24,24	1.63	2 (13%)
2	GSH	C	1220[B]	-	12,19,19	2.06	2 (16%)	15,24,24	3.59	9 (60%)
2	GSH	E	1220	-	12,19,19	1.95	2 (16%)	15,24,24	1.71	4 (26%)

In the following table, the Chirals column lists the number of chiral outliers, the number of chiral centers analysed, the number of these observed in the model and the number defined in the Chemical Component Dictionary. Similar counts are reported in the Torsion and Rings columns. '-' means no outliers of that kind were identified.

Mol	Type	Chain	Res	Link	Chirals	Torsions	Rings
2	GSH	C	1220[A]	-	-	8/18/24/24	-
2	GSH	H	1220	-	-	0/18/24/24	-
2	GSH	B	1220	-	-	1/18/24/24	-

*Continued on next page...*

*Continued from previous page...*

Mol	Type	Chain	Res	Link	Chirals	Torsions	Rings
2	GSH	F	1220	-	-	3/18/24/24	-
2	GSH	A	1220	-	-	3/18/24/24	-
2	GSH	D	1220	-	-	1/18/24/24	-
2	GSH	G	1220	-	-	1/18/24/24	-
2	GSH	C	1220[B]	-	-	8/18/24/24	-
2	GSH	E	1220	-	-	0/18/24/24	-

All (21) bond length outliers are listed below:

Mol	Chain	Res	Type	Atoms	Z	Observed(Å)	Ideal(Å)
2	D	1220	GSH	C2-N3	4.82	1.44	1.33
2	A	1220	GSH	CD1-N2	4.68	1.44	1.34
2	H	1220	GSH	C2-N3	4.62	1.43	1.33
2	F	1220	GSH	CD1-N2	4.58	1.43	1.34
2	C	1220[B]	GSH	C2-N3	4.51	1.43	1.33
2	C	1220[A]	GSH	C2-N3	4.48	1.43	1.33
2	C	1220[A]	GSH	CD1-N2	4.44	1.43	1.34
2	E	1220	GSH	C2-N3	4.35	1.43	1.33
2	B	1220	GSH	CD1-N2	4.33	1.43	1.34
2	C	1220[B]	GSH	CD1-N2	4.26	1.43	1.34
2	G	1220	GSH	CD1-N2	4.24	1.43	1.34
2	F	1220	GSH	C2-N3	4.16	1.42	1.33
2	H	1220	GSH	CD1-N2	4.13	1.42	1.34
2	A	1220	GSH	C2-N3	4.13	1.42	1.33
2	D	1220	GSH	CD1-N2	4.11	1.42	1.34
2	E	1220	GSH	CD1-N2	3.90	1.42	1.34
2	G	1220	GSH	C2-N3	3.71	1.41	1.33
2	B	1220	GSH	C2-N3	3.68	1.41	1.33
2	A	1220	GSH	CA3-N3	-2.36	1.41	1.46
2	G	1220	GSH	CA3-N3	-2.15	1.41	1.46
2	F	1220	GSH	CA3-N3	-2.03	1.42	1.46

All (52) bond angle outliers are listed below:

Mol	Chain	Res	Type	Atoms	Z	Observed(°)	Ideal(°)
2	D	1220	GSH	CA2-CB2-SG2	-7.48	105.79	114.19
2	F	1220	GSH	CA2-C2-N3	7.45	131.56	116.54
2	C	1220[A]	GSH	CA2-C2-N3	7.35	131.37	116.54
2	C	1220[B]	GSH	CA2-C2-N3	7.34	131.35	116.54
2	A	1220	GSH	CA2-C2-N3	6.42	129.48	116.54
2	D	1220	GSH	CA3-N3-C2	6.19	131.24	122.34

*Continued on next page...*

*Continued from previous page...*

Mol	Chain	Res	Type	Atoms	Z	Observed(°)	Ideal(°)
2	C	1220[B]	GSH	CA2-CB2-SG2	-6.15	107.28	114.19
2	C	1220[B]	GSH	CA3-N3-C2	6.02	131.00	122.34
2	F	1220	GSH	CA3-N3-C2	5.74	130.60	122.34
2	C	1220[A]	GSH	CA3-N3-C2	5.47	130.21	122.34
2	C	1220[A]	GSH	O2-C2-N3	-5.11	112.02	122.99
2	G	1220	GSH	CA2-CB2-SG2	-4.76	108.84	114.19
2	C	1220[A]	GSH	CB2-CA2-C2	4.58	119.22	109.76
2	C	1220[B]	GSH	CB2-CA2-C2	4.51	119.06	109.76
2	C	1220[B]	GSH	O2-C2-N3	-4.44	113.46	122.99
2	A	1220	GSH	O2-C2-N3	-4.32	113.72	122.99
2	F	1220	GSH	O2-C2-N3	-4.21	113.95	122.99
2	C	1220[A]	GSH	CA2-CB2-SG2	-4.21	109.46	114.19
2	F	1220	GSH	CB2-CA2-C2	-4.09	101.33	109.76
2	A	1220	GSH	CG1-CD1-N2	4.07	122.90	115.83
2	A	1220	GSH	CB2-CA2-N2	-4.07	105.47	111.28
2	D	1220	GSH	C3-CA3-N3	3.75	117.65	110.43
2	A	1220	GSH	C2-CA2-N2	3.44	120.53	111.16
2	E	1220	GSH	C3-CA3-N3	3.39	116.97	110.43
2	A	1220	GSH	CA3-N3-C2	3.32	127.11	122.34
2	E	1220	GSH	CA3-N3-C2	-3.06	117.93	122.34
2	H	1220	GSH	C3-CA3-N3	2.90	116.02	110.43
2	B	1220	GSH	CG1-CD1-N2	2.87	120.80	115.83
2	F	1220	GSH	CB2-CA2-N2	-2.86	107.20	111.28
2	F	1220	GSH	C2-CA2-N2	2.85	118.91	111.16
2	F	1220	GSH	O2-C2-CA2	-2.84	114.49	120.45
2	H	1220	GSH	CA2-C2-N3	2.58	121.74	116.54
2	A	1220	GSH	OE1-CD1-N2	-2.57	118.61	122.95
2	C	1220[A]	GSH	CG1-CD1-N2	2.57	120.28	115.83
2	H	1220	GSH	CG1-CD1-N2	2.54	120.24	115.83
2	C	1220[A]	GSH	C3-CA3-N3	-2.54	105.53	110.43
2	C	1220[B]	GSH	O2-C2-CA2	-2.50	115.19	120.45
2	G	1220	GSH	CG1-CD1-N2	2.47	120.12	115.83
2	B	1220	GSH	CA3-N3-C2	-2.43	118.84	122.34
2	C	1220[A]	GSH	OE1-CD1-CG1	-2.36	117.70	122.02
2	D	1220	GSH	CG1-CD1-N2	2.31	119.84	115.83
2	F	1220	GSH	CG1-CD1-N2	2.29	119.81	115.83
2	D	1220	GSH	CB2-CA2-C2	2.24	114.38	109.76
2	E	1220	GSH	CG1-CD1-N2	2.23	119.71	115.83
2	E	1220	GSH	CA2-C2-N3	2.21	121.00	116.54
2	A	1220	GSH	CB2-CA2-C2	-2.16	105.31	109.76
2	C	1220[B]	GSH	C3-CA3-N3	-2.15	106.29	110.43
2	H	1220	GSH	CA3-N3-C2	-2.08	119.35	122.34

*Continued on next page...*

*Continued from previous page...*

Mol	Chain	Res	Type	Atoms	Z	Observed(°)	Ideal(°)
2	C	1220[B]	GSH	OE1-CD1-CG1	-2.07	118.22	122.02
2	B	1220	GSH	CG1-CB1-CA1	-2.07	109.01	113.84
2	B	1220	GSH	O2-C2-N3	-2.03	118.64	122.99
2	C	1220[B]	GSH	CG1-CD1-N2	2.01	119.32	115.83

There are no chirality outliers.

All (25) torsion outliers are listed below:

Mol	Chain	Res	Type	Atoms
2	C	1220[A]	GSH	N1-CA1-CB1-CG1
2	C	1220[A]	GSH	C1-CA1-CB1-CG1
2	C	1220[A]	GSH	O2-C2-CA2-CB2
2	C	1220[A]	GSH	N3-C2-CA2-CB2
2	C	1220[A]	GSH	N2-CA2-CB2-SG2
2	C	1220[A]	GSH	C2-CA2-CB2-SG2
2	D	1220	GSH	C3-CA3-N3-C2
2	C	1220[B]	GSH	N1-CA1-CB1-CG1
2	C	1220[B]	GSH	C1-CA1-CB1-CG1
2	C	1220[A]	GSH	O2-C2-N3-CA3
2	F	1220	GSH	O2-C2-N3-CA3
2	A	1220	GSH	O2-C2-N3-CA3
2	C	1220[B]	GSH	O2-C2-N3-CA3
2	C	1220[A]	GSH	CA2-C2-N3-CA3
2	F	1220	GSH	CA2-C2-N3-CA3
2	A	1220	GSH	CA2-C2-N3-CA3
2	C	1220[B]	GSH	CA2-C2-N3-CA3
2	C	1220[B]	GSH	O2-C2-CA2-CB2
2	C	1220[B]	GSH	N3-C2-CA2-CB2
2	B	1220	GSH	N1-CA1-CB1-CG1
2	G	1220	GSH	N2-CA2-CB2-SG2
2	F	1220	GSH	C3-CA3-N3-C2
2	A	1220	GSH	C3-CA3-N3-C2
2	C	1220[B]	GSH	N3-C2-CA2-N2
2	C	1220[B]	GSH	O2-C2-CA2-N2

There are no ring outliers.

3 monomers are involved in 3 short contacts:

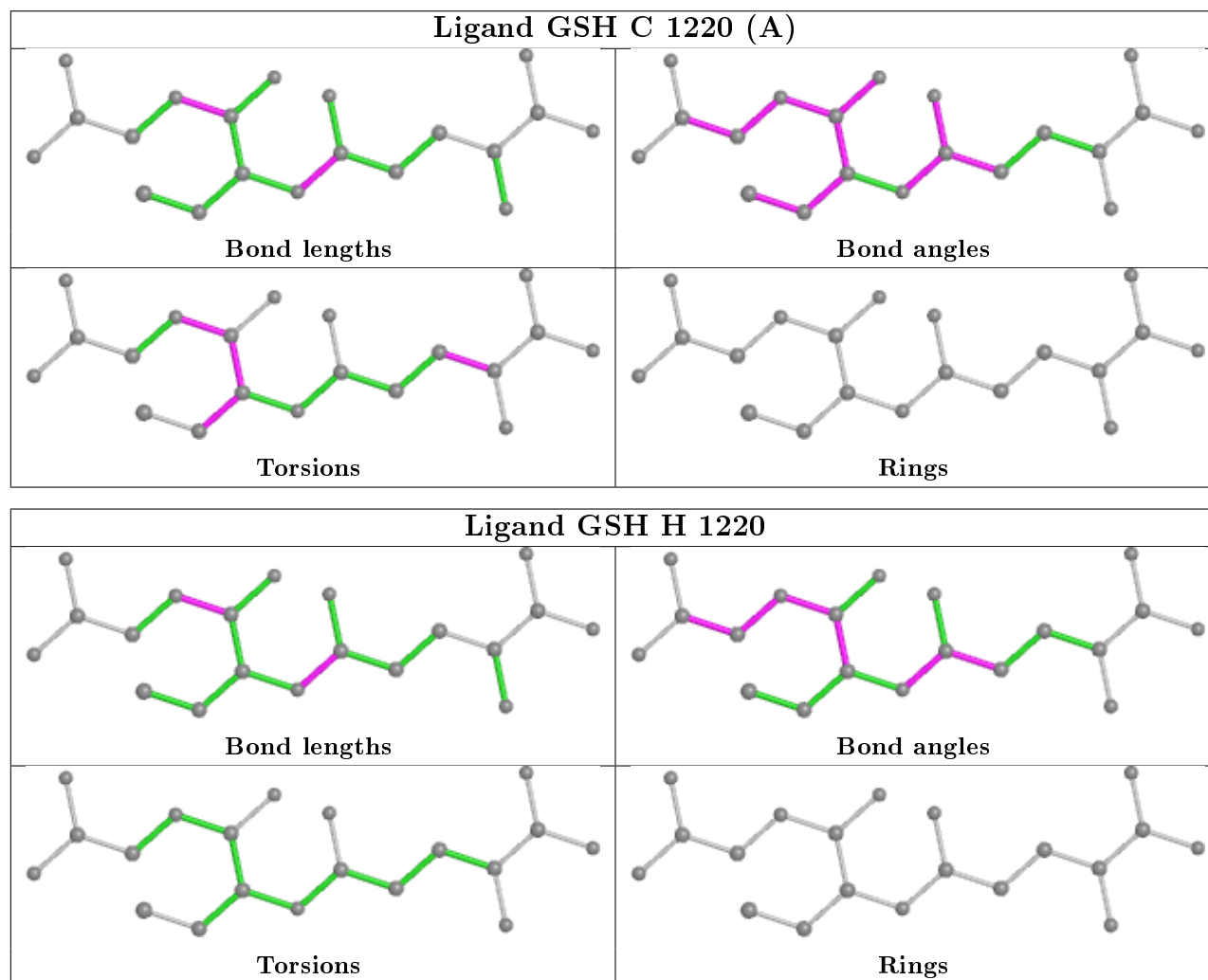
Mol	Chain	Res	Type	Clashes	Symm-Clashes
2	C	1220[A]	GSH	1	0
2	A	1220	GSH	1	0

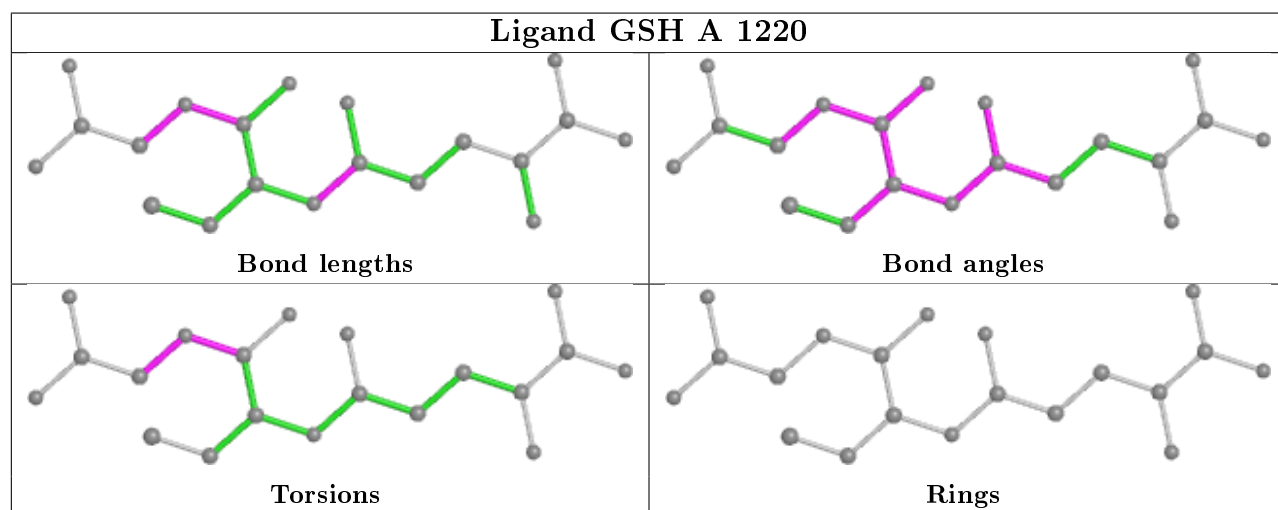
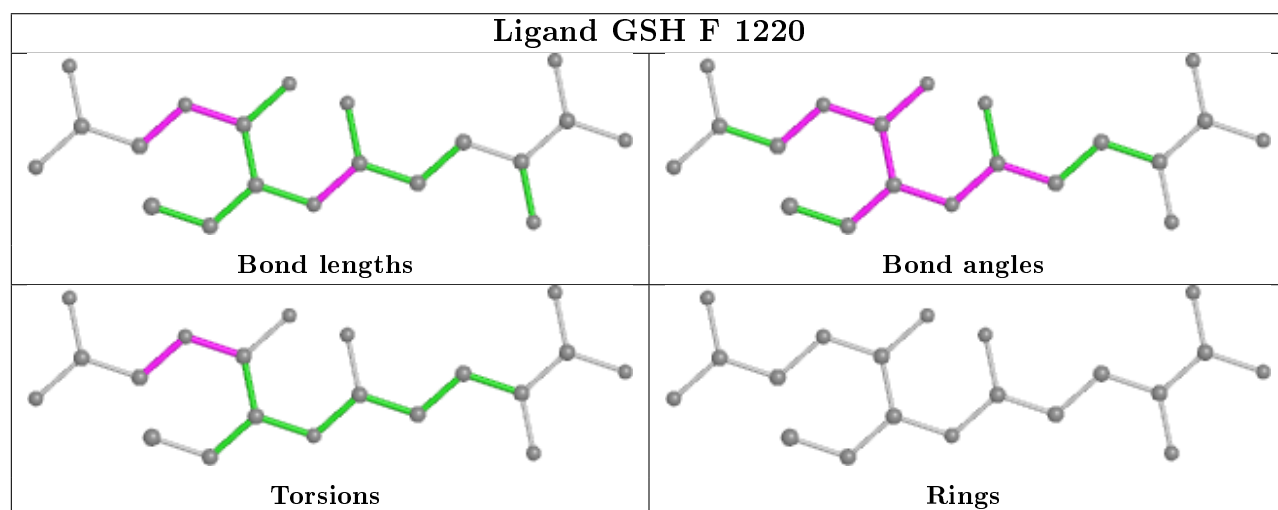
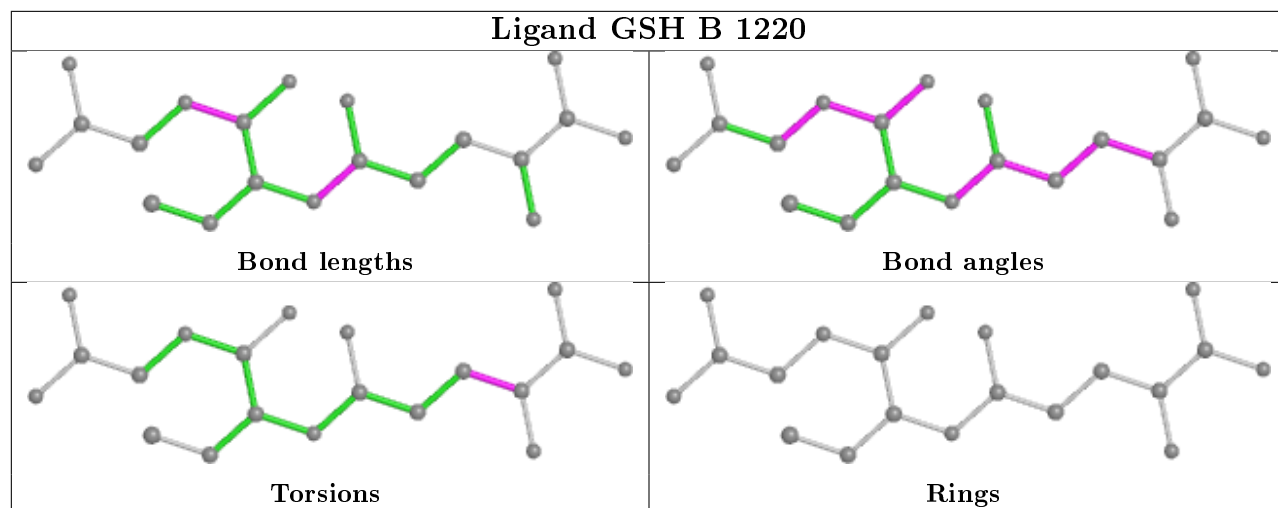
*Continued on next page...*

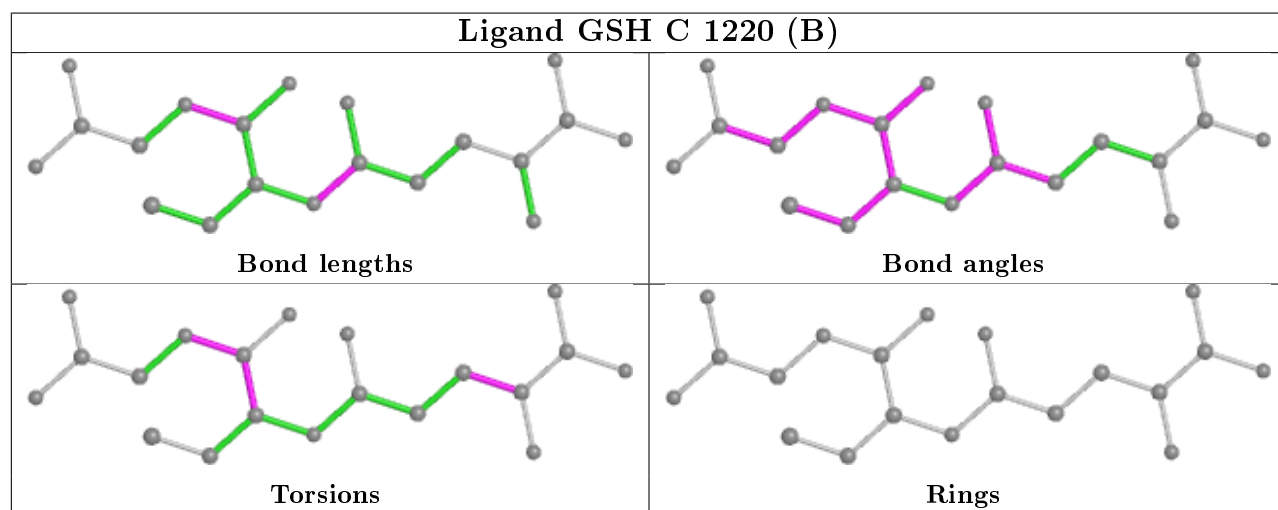
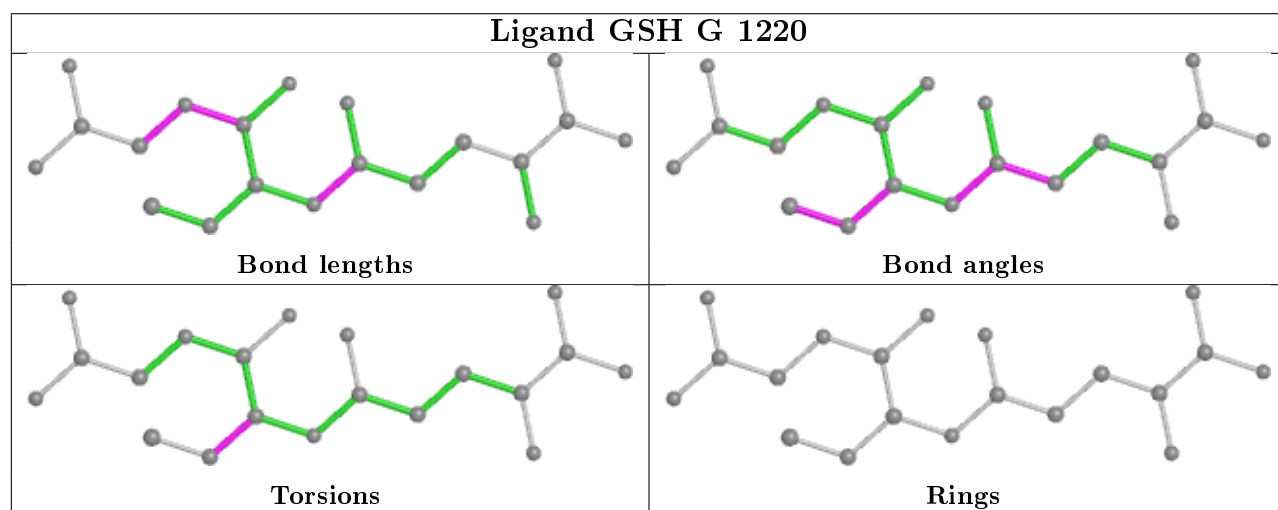
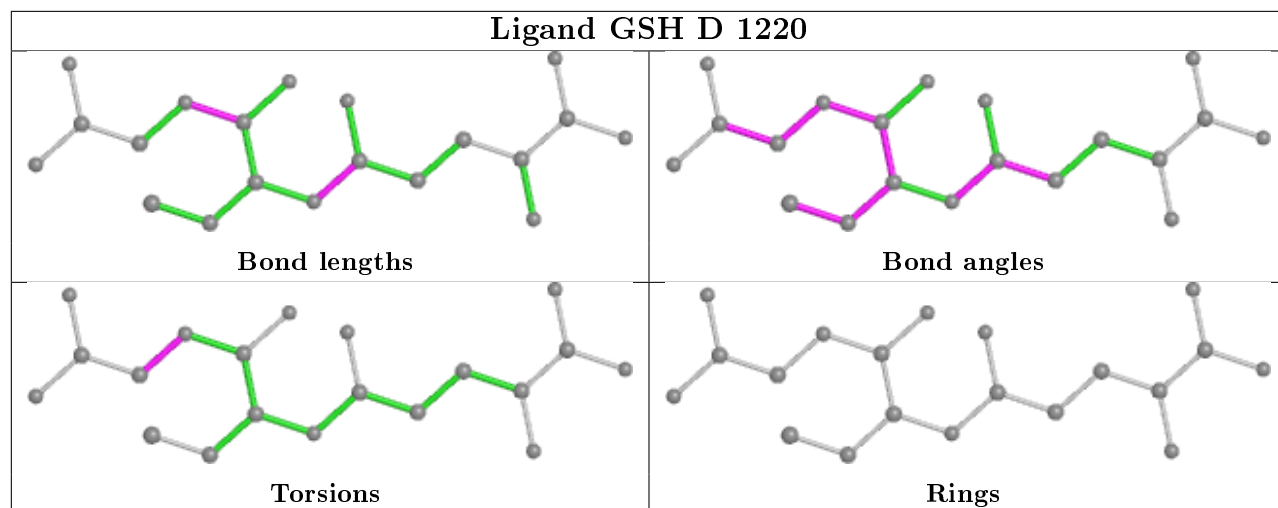
*Continued from previous page...*

Mol	Chain	Res	Type	Clashes	Symm-Clashes
2	G	1220	GSH	1	0

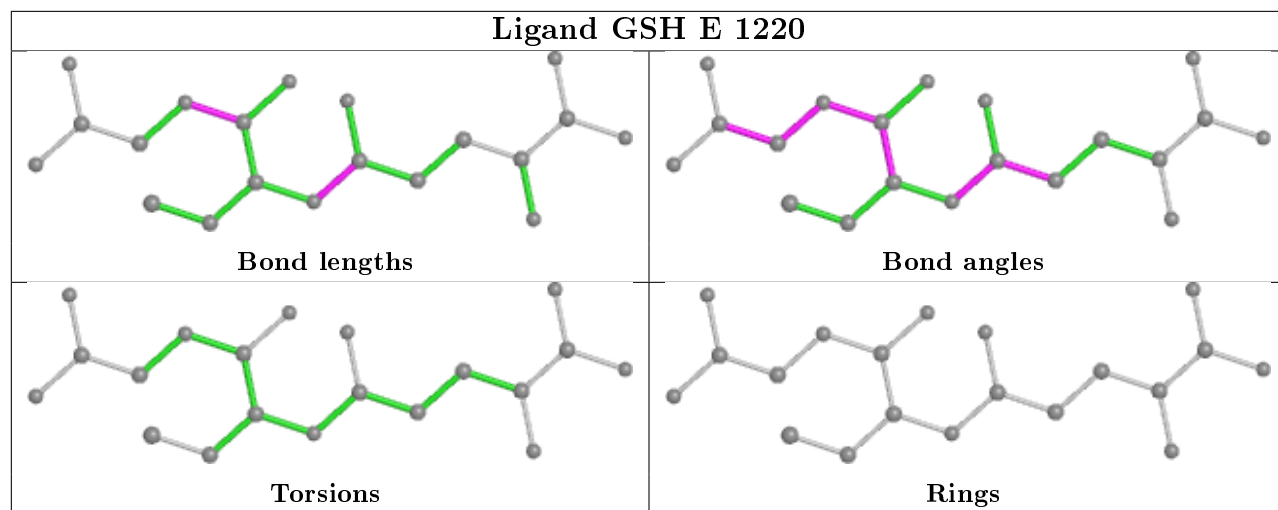
The following is a two-dimensional graphical depiction of Mogul quality analysis of bond lengths, bond angles, torsion angles, and ring geometry for all instances of the Ligand of Interest. In addition, ligands with molecular weight > 250 and outliers as shown on the validation Tables will also be included. For torsion angles, if less than 5% of the Mogul distribution of torsion angles is within 10 degrees of the torsion angle in question, then that torsion angle is considered an outlier. Any bond that is central to one or more torsion angles identified as an outlier by Mogul will be highlighted in the graph. For rings, the root-mean-square deviation (RMSD) between the ring in question and similar rings identified by Mogul is calculated over all ring torsion angles. If the average RMSD is greater than 60 degrees and the minimal RMSD between the ring in question and any Mogul-identified rings is also greater than 60 degrees, then that ring is considered an outlier. The outliers are highlighted in purple. The color gray indicates Mogul did not find sufficient equivalents in the CSD to analyse the geometry.











## 5.7 Other polymers [i](#)

There are no such residues in this entry.

## 5.8 Polymer linkage issues [i](#)

There are no chain breaks in this entry.

## 6 Fit of model and data ⓘ

### 6.1 Protein, DNA and RNA chains ⓘ

In the following table, the column labelled ‘#RSRZ> 2’ contains the number (and percentage) of RSRZ outliers, followed by percent RSRZ outliers for the chain as percentile scores relative to all X-ray entries and entries of similar resolution. The OWAB column contains the minimum, median, 95<sup>th</sup> percentile and maximum values of the occupancy-weighted average B-factor per residue. The column labelled ‘Q< 0.9’ lists the number of (and percentage) of residues with an average occupancy less than 0.9.

Mol	Chain	Analysed	<RSRZ>	#RSRZ>2	OWAB(Å <sup>2</sup> )	Q<0.9
1	A	219/219 (100%)	-0.65	1 (0%) 91 90	9, 19, 35, 60	0
1	B	219/219 (100%)	-0.68	0 100 100	8, 18, 31, 51	0
1	C	218/219 (99%)	-0.66	0 100 100	8, 17, 31, 39	0
1	D	218/219 (99%)	-0.65	0 100 100	8, 19, 32, 43	0
1	E	219/219 (100%)	-0.25	2 (0%) 84 83	15, 28, 41, 70	0
1	F	219/219 (100%)	-0.54	1 (0%) 91 90	13, 23, 36, 54	0
1	G	218/219 (99%)	-0.46	1 (0%) 91 90	14, 23, 34, 44	0
1	H	219/219 (100%)	-0.25	2 (0%) 84 83	15, 28, 40, 52	0
All	All	1749/1752 (99%)	-0.52	7 (0%) 92 92	8, 22, 37, 70	0

All (7) RSRZ outliers are listed below:

Mol	Chain	Res	Type	RSRZ
1	E	1	MET	6.2
1	H	1	MET	5.1
1	H	2	LEU	4.4
1	A	1	MET	2.6
1	F	1	MET	2.3
1	E	190	GLU	2.2
1	G	219	LYS	2.1

### 6.2 Non-standard residues in protein, DNA, RNA chains ⓘ

There are no non-standard protein/DNA/RNA residues in this entry.

### 6.3 Carbohydrates ⓘ

There are no carbohydrates in this entry.

## 6.4 Ligands ⓘ

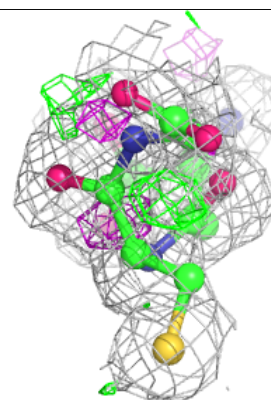
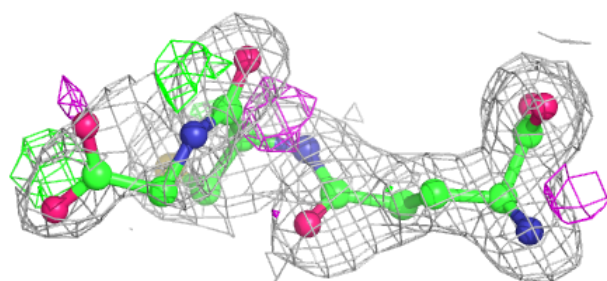
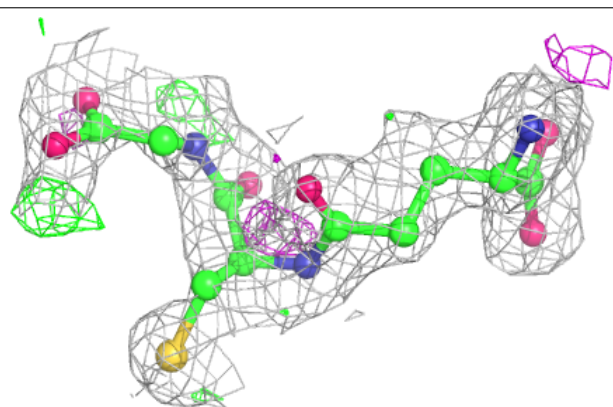
In the following table, the Atoms column lists the number of modelled atoms in the group and the number defined in the chemical component dictionary. The B-factors column lists the minimum, median, 95<sup>th</sup> percentile and maximum values of B factors of atoms in the group. The column labelled 'Q< 0.9' lists the number of atoms with occupancy less than 0.9.

Mol	Type	Chain	Res	Atoms	RSCC	RSR	B-factors(Å <sup>2</sup> )	Q<0.9
2	GSH	C	1220[A]	20/20	0.88	0.15	16,23,27,28	20
2	GSH	C	1220[B]	20/20	0.88	0.15	17,23,26,27	20
2	GSH	D	1220	20/20	0.89	0.11	14,28,38,41	0
2	GSH	A	1220	20/20	0.91	0.12	19,30,38,38	0
2	GSH	F	1220	20/20	0.92	0.11	10,23,38,38	0
2	GSH	H	1220	20/20	0.93	0.10	17,25,32,37	0
2	GSH	E	1220	20/20	0.94	0.10	17,25,34,44	0
2	GSH	B	1220	20/20	0.95	0.09	15,24,34,37	0
2	GSH	G	1220	20/20	0.95	0.09	15,23,32,34	0

The following is a graphical depiction of the model fit to experimental electron density of all instances of the Ligand of Interest. In addition, ligands with molecular weight > 250 and outliers as shown on the geometry validation Tables will also be included. Each fit is shown from different orientation to approximate a three-dimensional view.

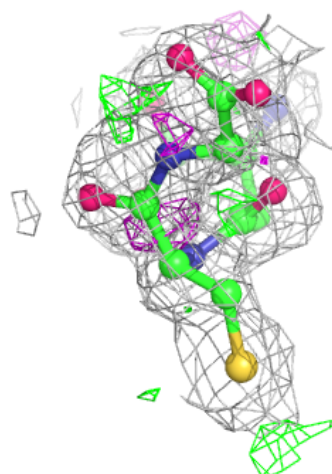
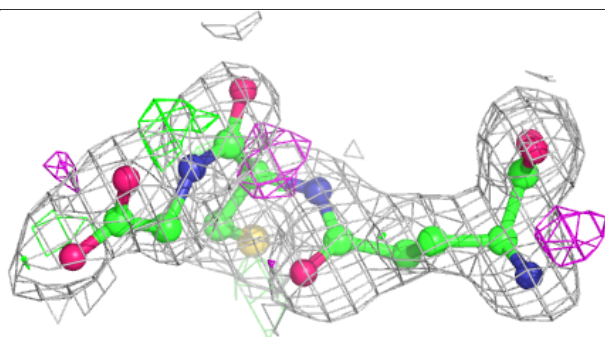
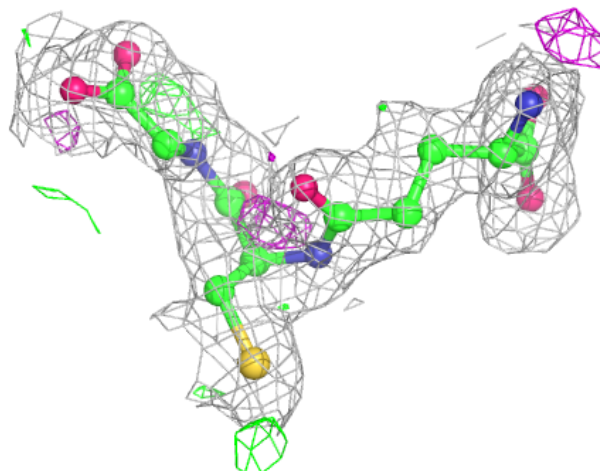
### Electron density around GSH C 1220 (A):

2mF<sub>o</sub>-DF<sub>c</sub> (at 0.7 rmsd) in gray  
mF<sub>o</sub>-DF<sub>c</sub> (at 3 rmsd) in purple (negative)  
and green (positive)



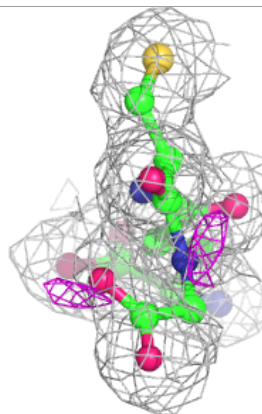
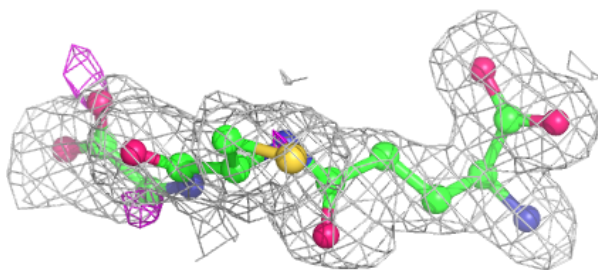
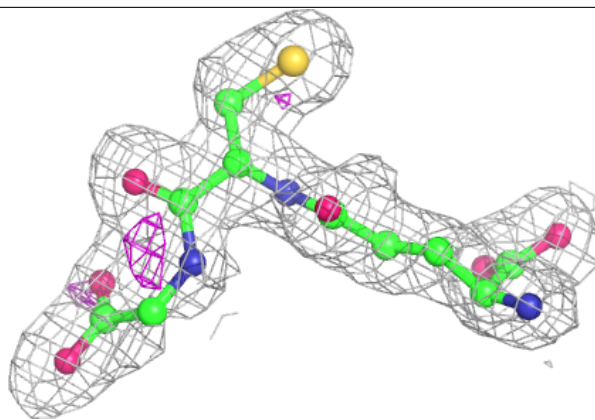
**Electron density around GSH C 1220 (B):**

$2mF_o-DF_c$  (at 0.7 rmsd) in gray  
 $mF_o-DF_c$  (at 3 rmsd) in purple (negative)  
and green (positive)



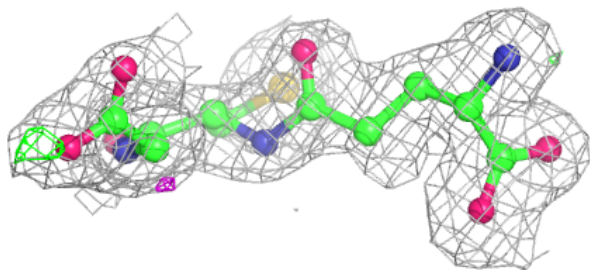
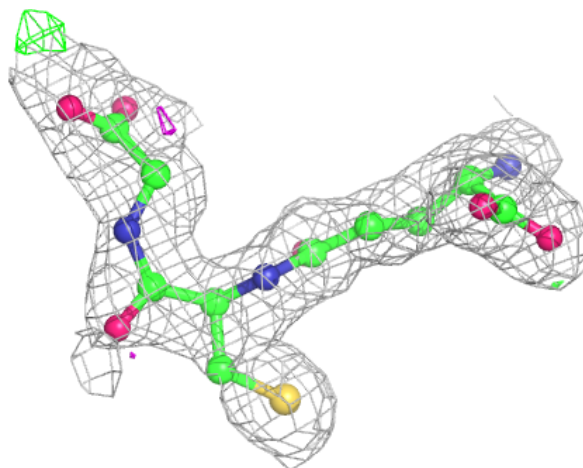
**Electron density around GSH D 1220:**

$2mF_o - DF_c$  (at 0.7 rmsd) in gray  
 $mF_o - DF_c$  (at 3 rmsd) in purple (negative)  
and green (positive)



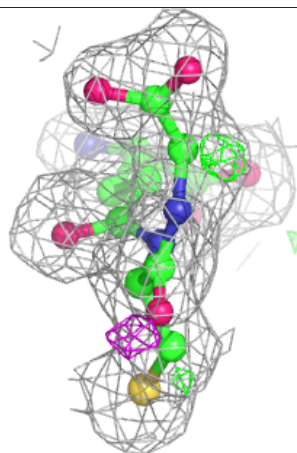
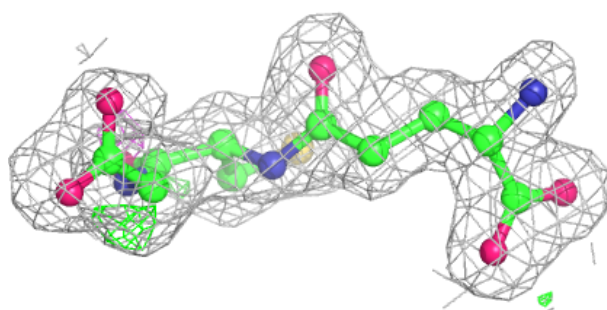
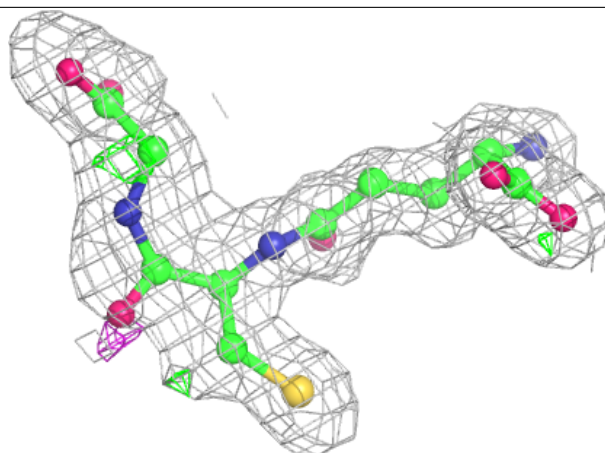
**Electron density around GSH A 1220:**

$2mF_o-DF_c$  (at 0.7 rmsd) in gray  
 $mF_o-DF_c$  (at 3 rmsd) in purple (negative)  
and green (positive)



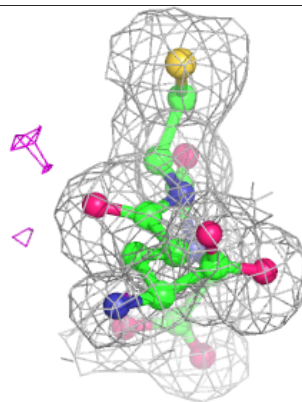
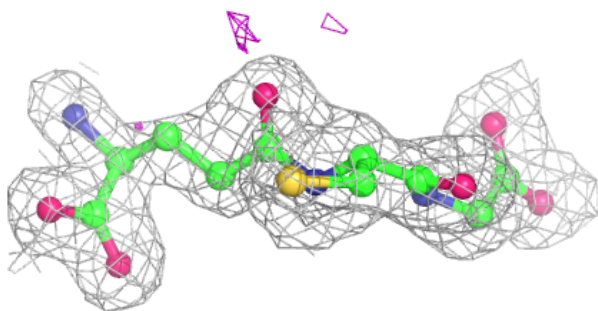
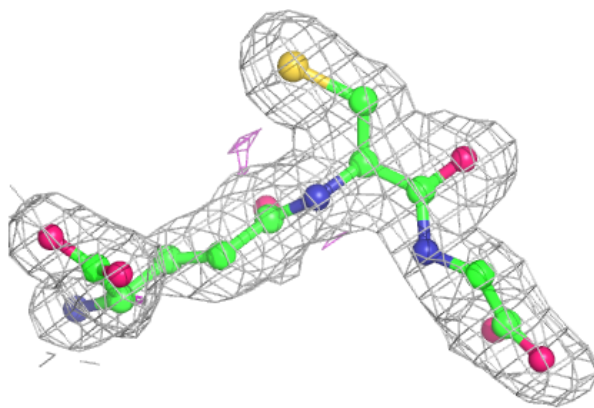
**Electron density around GSH F 1220:**

$2mF_o - DF_c$  (at 0.7 rmsd) in gray  
 $mF_o - DF_c$  (at 3 rmsd) in purple (negative)  
and green (positive)



**Electron density around GSH H 1220:**

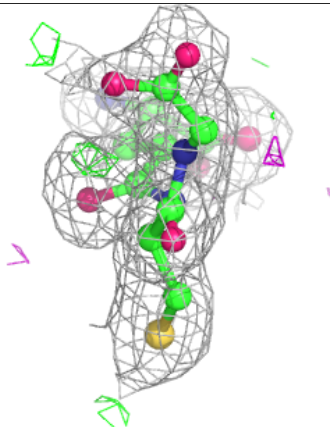
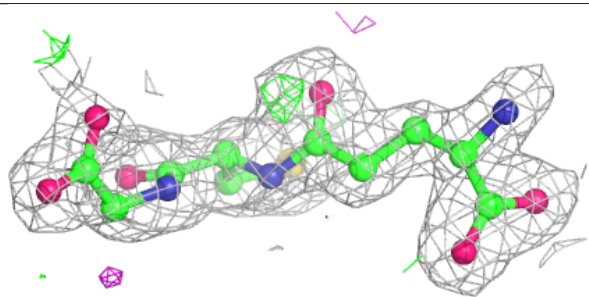
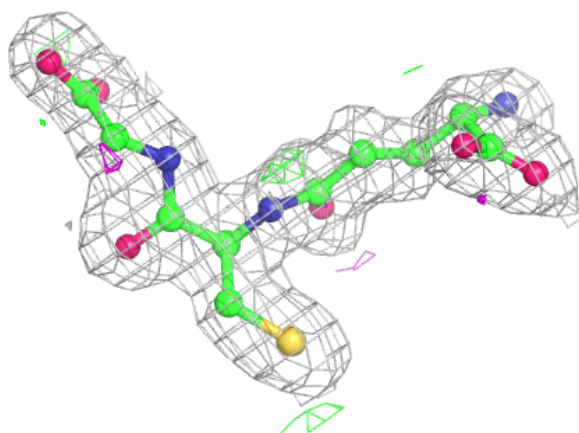
$2mF_o-DF_c$  (at 0.7 rmsd) in gray  
 $mF_o-DF_c$  (at 3 rmsd) in purple (negative)  
and green (positive)





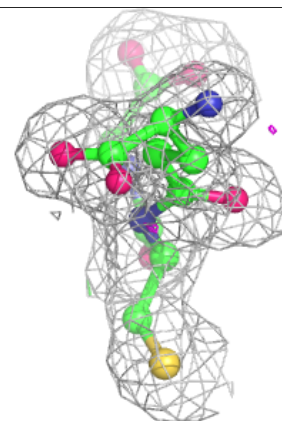
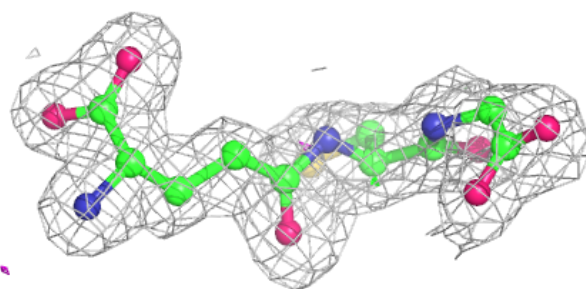
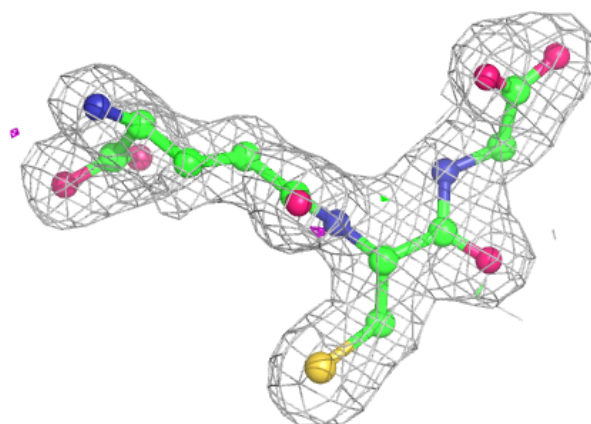
**Electron density around GSH E 1220:**

$2mF_o-DF_c$  (at 0.7 rmsd) in gray  
 $mF_o-DF_c$  (at 3 rmsd) in purple (negative)  
and green (positive)

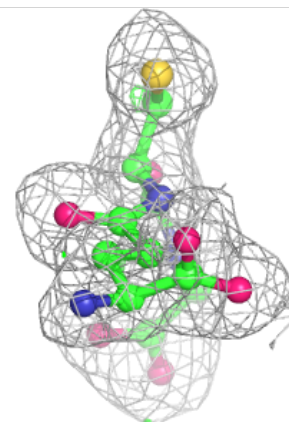
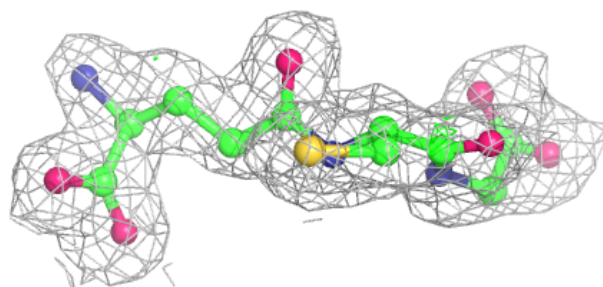
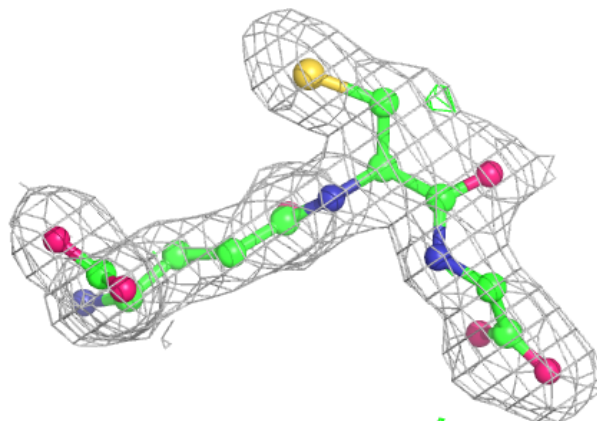


**Electron density around GSH B 1220:**

$2mF_o-DF_c$  (at 0.7 rmsd) in gray  
 $mF_o-DF_c$  (at 3 rmsd) in purple (negative)  
and green (positive)

**Electron density around GSH G 1220:**

$2mF_o-DF_c$  (at 0.7 rmsd) in gray  
 $mF_o-DF_c$  (at 3 rmsd) in purple (negative)  
and green (positive)



## 6.5 Other polymers [i](#)

There are no such residues in this entry.