



Full wwPDB X-ray Structure Validation Report ⓘ

Aug 21, 2020 – 06:22 AM BST

PDB ID : 6AOH
Title : Crystal structure of Toxoplasma gondii TS-DHFR complexed with NADPH, dUMP, PDDF, and 5-(4-(3-(2-methoxypyrimidin-5-yl)phenyl)piperazin-1-yl)pyrimidine-2,4-diamine (TRC-2533)
Authors : Thomas, S.B.; Li, Y.; Chen, Z.; Lu, H.
Deposited on : 2017-08-16
Resolution : 3.50 Å(reported)

This is a Full wwPDB X-ray Structure Validation Report for a publicly released PDB entry.

We welcome your comments at validation@mail.wwpdb.org

A user guide is available at

<https://www.wwpdb.org/validation/2017/XrayValidationReportHelp>

with specific help available everywhere you see the ⓘ symbol.

The following versions of software and data (see [references ⓘ](#)) were used in the production of this report:

MolProbity : 4.02b-467
Mogul : 1.8.5 (274361), CSD as541be (2020)
Xtriage (Phenix) : 1.13
EDS : 2.13.1
buster-report : 1.1.7 (2018)
Percentile statistics : 20191225.v01 (using entries in the PDB archive December 25th 2019)
Refmac : 5.8.0158
CCP4 : 7.0.044 (Gargrove)
Ideal geometry (proteins) : Engh & Huber (2001)
Ideal geometry (DNA, RNA) : Parkinson et al. (1996)
Validation Pipeline (wwPDB-VP) : 2.13.1

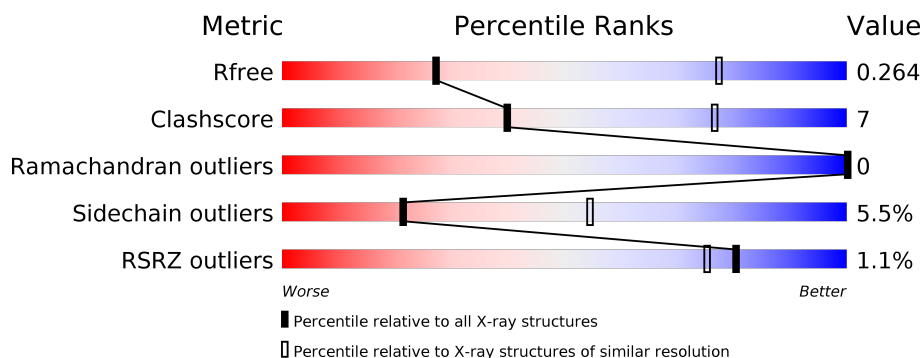
1 Overall quality at a glance ⓘ

The following experimental techniques were used to determine the structure:

X-RAY DIFFRACTION

The reported resolution of this entry is 3.50 Å.

Percentile scores (ranging between 0-100) for global validation metrics of the entry are shown in the following graphic. The table shows the number of entries on which the scores are based.



Metric	Whole archive (#Entries)	Similar resolution (#Entries, resolution range(Å))
R_{free}	130704	1659 (3.60-3.40)
Clashscore	141614	1036 (3.58-3.42)
Ramachandran outliers	138981	1005 (3.58-3.42)
Sidechain outliers	138945	1006 (3.58-3.42)
RSRZ outliers	127900	1559 (3.60-3.40)

The table below summarises the geometric issues observed across the polymeric chains and their fit to the electron density. The red, orange, yellow and green segments on the lower bar indicate the fraction of residues that contain outliers for ≥ 3 , 2, 1 and 0 types of geometric quality criteria respectively. A grey segment represents the fraction of residues that are not modelled. The numeric value for each fraction is indicated below the corresponding segment, with a dot representing fractions $\leq 5\%$. The upper red bar (where present) indicates the fraction of residues that have poor fit to the electron density. The numeric value is given above the bar.

Mol	Chain	Length	Quality of chain
1	A	566	<div> <div style="width: 100%; height: 10px; background: linear-gradient(to right, red 1%, green 72%, yellow 17%, grey 10%);"></div> <div style="display: flex; justify-content: space-between; padding: 0 5px;"> % 72% 17% • 10% </div> </div>
1	B	566	<div> <div style="width: 100%; height: 10px; background: linear-gradient(to right, red 1%, green 75%, yellow 14%, grey 10%);"></div> <div style="display: flex; justify-content: space-between; padding: 0 5px;"> % 75% 14% • 10% </div> </div>

2 Entry composition [i](#)

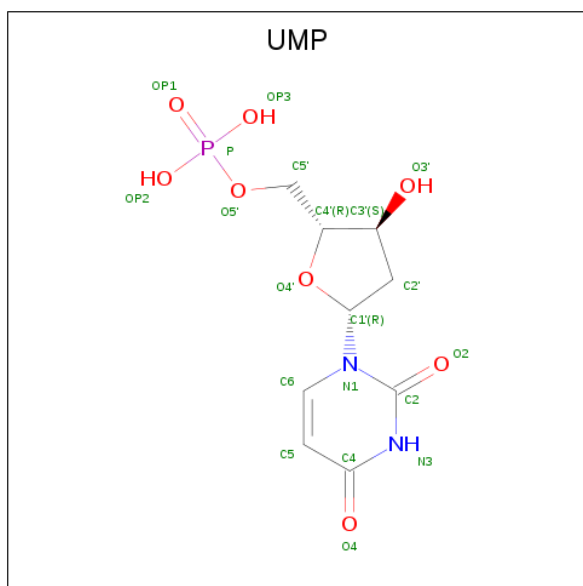
There are 5 unique types of molecules in this entry. The entry contains 8452 atoms, of which 0 are hydrogens and 0 are deuteriums.

In the tables below, the ZeroOcc column contains the number of atoms modelled with zero occupancy, the AltConf column contains the number of residues with at least one atom in alternate conformation and the Trace column contains the number of residues modelled with at most 2 atoms.

- Molecule 1 is a protein called Bifunctional dihydrofolate reductase-thymidylate synthase.

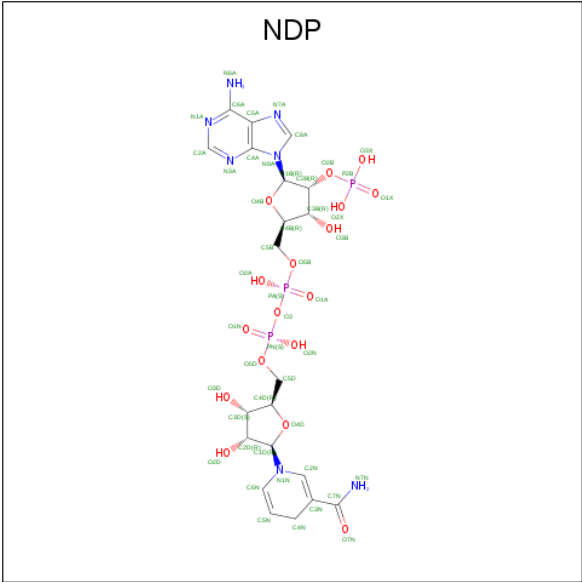
Mol	Chain	Residues	Atoms					ZeroOcc	AltConf	Trace
1	A	511	Total	C	N	O	S	0	1	0
			4095	2618	717	735	25			
1	B	511	Total	C	N	O	S	0	1	0
			4095	2617	716	737	25			

- Molecule 2 is 2'-DEOXYURIDINE 5'-MONOPHOSPHATE (three-letter code: UMP) (formula: $C_9H_{13}N_2O_8P$).



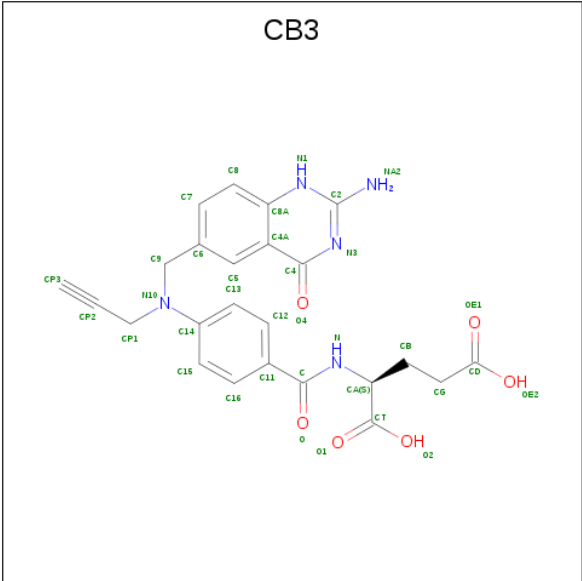
Mol	Chain	Residues	Atoms					ZeroOcc	AltConf
2	A	1	Total	C	N	O	P	0	0
			20	9	2	8	1		
2	B	1	Total	C	N	O	P	0	0
			20	9	2	8	1		

- Molecule 3 is NADPH DIHYDRO-NICOTINAMIDE-ADENINE-DINUCLEOTIDE PHOSPHATE (three-letter code: NDP) (formula: $C_{21}H_{30}N_7O_{17}P_3$).



Mol	Chain	Residues	Atoms					ZeroOcc	AltConf
3	A	1	Total 48	C 21	N 7	O 17	P 3	0	0
3	B	1	Total 48	C 21	N 7	O 17	P 3	0	0

- Molecule 4 is 10-PROPARGYL-5,8-DIDEAZAFOLIC ACID (three-letter code: CB3) (formula: C₂₄H₂₃N₅O₆).



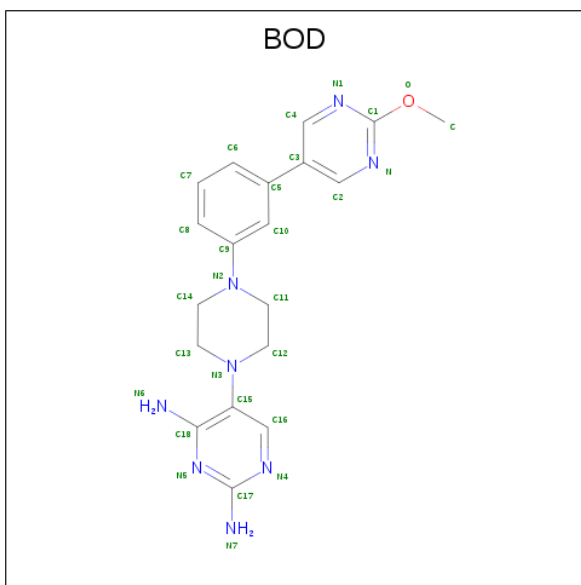
Mol	Chain	Residues	Atoms				ZeroOcc	AltConf
4	A	1	Total	C	N	O	0	0
			35	24	5	6		

Continued on next page...

Continued from previous page...

Mol	Chain	Residues	Atoms				ZeroOcc	AltConf
4	B	1	Total	C	N	O	0	0
			35	24	5	6		

- Molecule 5 is 5-{4-[3-(2-methoxypyrimidin-5-yl)phenyl]piperazin-1-yl}pyrimidine-2,4-diamine (three-letter code: BOD) (formula: C₁₉H₂₂N₈O).

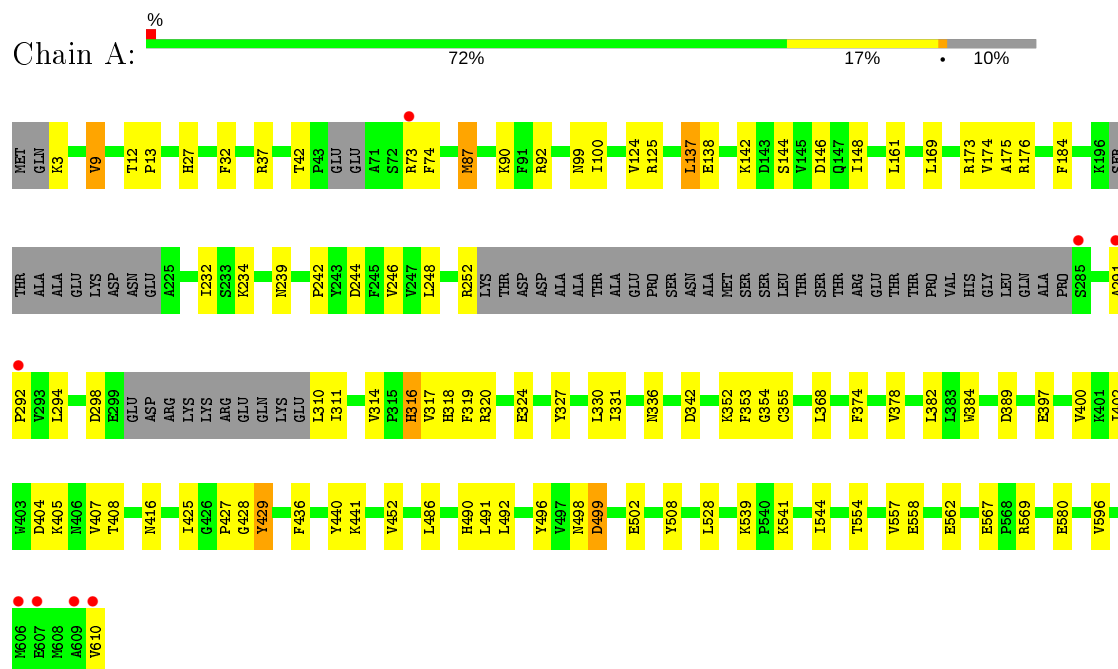


Mol	Chain	Residues	Atoms				ZeroOcc	AltConf
5	A	1	Total	C	N	O	0	0
			28	19	8	1		
5	B	1	Total	C	N	O	0	0
			28	19	8	1		

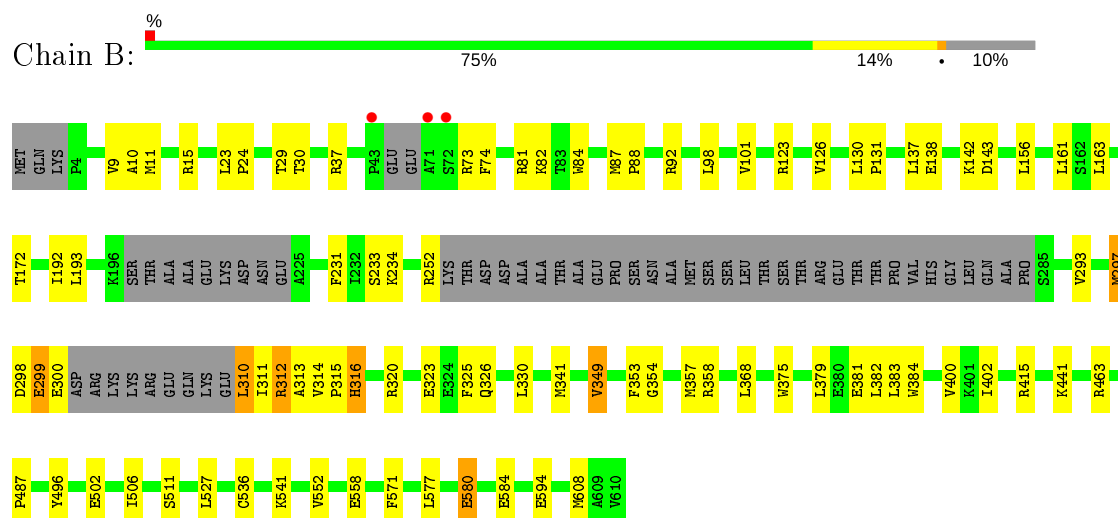
3 Residue-property plots [i](#)

These plots are drawn for all protein, RNA, DNA and oligosaccharide chains in the entry. The first graphic for a chain summarises the proportions of the various outlier classes displayed in the second graphic. The second graphic shows the sequence view annotated by issues in geometry and electron density. Residues are color-coded according to the number of geometric quality criteria for which they contain at least one outlier: green = 0, yellow = 1, orange = 2 and red = 3 or more. A red dot above a residue indicates a poor fit to the electron density ($RSRZ > 2$). Stretches of 2 or more consecutive residues without any outlier are shown as a green connector. Residues present in the sample, but not in the model, are shown in grey.

- Molecule 1: Bifunctional dihydrofolate reductase-thymidylate synthase



- Molecule 1: Bifunctional dihydrofolate reductase-thymidylate synthase



4 Data and refinement statistics

Property	Value	Source
Space group	P 21 21 21	Depositor
Cell constants a, b, c, α , β , γ	53.21Å 144.34Å 174.19Å 90.00° 90.00° 90.00°	Depositor
Resolution (Å)	50.00 – 3.50 43.31 – 3.44	Depositor EDS
% Data completeness (in resolution range)	62.1 (50.00-3.50) 62.1 (43.31-3.44)	Depositor EDS
R_{merge}	0.14	Depositor
R_{sym}	(Not available)	Depositor
$\langle I/\sigma(I) \rangle$ ¹	4.35 (at 3.48Å)	Xtriage
Refinement program	REFMAC 5.6.0016	Depositor
R, R_{free}	0.198 , 0.264 0.197 , 0.264	Depositor DCC
R_{free} test set	556 reflections (4.83%)	wwPDB-VP
Wilson B-factor (Å ²)	52.1	Xtriage
Anisotropy	0.073	Xtriage
Bulk solvent k_{sol} (e/Å ³), B_{sol} (Å ²)	0.30 , 19.2	EDS
L-test for twinning ²	$\langle L \rangle = 0.48$, $\langle L^2 \rangle = 0.31$	Xtriage
Estimated twinning fraction	No twinning to report.	Xtriage
F_o, F_c correlation	0.90	EDS
Total number of atoms	8452	wwPDB-VP
Average B, all atoms (Å ²)	50.0	wwPDB-VP

Xtriage's analysis on translational NCS is as follows: *The largest off-origin peak in the Patterson function is 4.15% of the height of the origin peak. No significant pseudotranslation is detected.*

¹Intensities estimated from amplitudes.

²Theoretical values of $\langle |L| \rangle$, $\langle L^2 \rangle$ for acentric reflections are 0.5, 0.333 respectively for untwinned datasets, and 0.375, 0.2 for perfectly twinned datasets.

5 Model quality [i](#)

5.1 Standard geometry [i](#)

Bond lengths and bond angles in the following residue types are not validated in this section: CB3, BOD, UMP, NDP

The Z score for a bond length (or angle) is the number of standard deviations the observed value is removed from the expected value. A bond length (or angle) with $|Z| > 5$ is considered an outlier worth inspection. RMSZ is the root-mean-square of all Z scores of the bond lengths (or angles).

Mol	Chain	Bond lengths		Bond angles	
		RMSZ	$\# Z > 5$	RMSZ	$\# Z > 5$
1	A	0.40	2/4194 (0.0%)	0.53	0/5680
1	B	0.40	2/4194 (0.0%)	0.53	1/5680 (0.0%)
All	All	0.40	4/8388 (0.0%)	0.53	1/11360 (0.0%)

All (4) bond length outliers are listed below:

Mol	Chain	Res	Type	Atoms	Z	Observed(Å)	Ideal(Å)
1	B	73	ARG	C-N	11.37	1.60	1.34
1	A	73	ARG	C-N	10.10	1.57	1.34
1	B	73	ARG	C-O	8.75	1.40	1.23
1	A	74	PHE	N-CA	8.46	1.63	1.46

All (1) bond angle outliers are listed below:

Mol	Chain	Res	Type	Atoms	Z	Observed(°)	Ideal(°)
1	B	314	VAL	C-N-CD	5.94	140.87	128.40

There are no chirality outliers.

There are no planarity outliers.

5.2 Too-close contacts [i](#)

In the following table, the Non-H and H(model) columns list the number of non-hydrogen atoms and hydrogen atoms in the chain respectively. The H(added) column lists the number of hydrogen atoms added and optimized by MolProbity. The Clashes column lists the number of clashes within the asymmetric unit, whereas Symm-Clashes lists symmetry related clashes.

Mol	Chain	Non-H	H(model)	H(added)	Clashes	Symm-Clashes
1	A	4095	0	4064	62	0

Continued on next page...

Continued from previous page...

Mol	Chain	Non-H	H(model)	H(added)	Clashes	Symm-Clashes
1	B	4095	0	4058	54	0
2	A	20	0	11	0	0
2	B	20	0	11	1	0
3	A	48	0	26	0	0
3	B	48	0	26	3	0
4	A	35	0	21	8	0
4	B	35	0	21	8	0
5	A	28	0	0	3	0
5	B	28	0	0	1	0
All	All	8452	0	8238	122	0

The all-atom clashscore is defined as the number of clashes found per 1000 atoms (including hydrogen atoms). The all-atom clashscore for this structure is 7.

All (122) close contacts within the same asymmetric unit are listed below, sorted by their clash magnitude.

Atom-1	Atom-2	Interatomic distance (Å)	Clash overlap (Å)
1:A:425:ILE:HD12	1:A:428:GLY:HA3	1.40	1.02
1:A:353:PHE:CE1	1:B:496:TYR:HB2	2.04	0.93
4:B:703:CB3:H5	4:B:703:CB3:C14	2.06	0.85
1:B:300:GLU:OE2	1:B:300:GLU:N	2.09	0.84
1:B:313:ALA:O	1:B:320:ARG:NH2	2.10	0.84
4:A:703:CB3:C5	4:A:703:CB3:C15	2.55	0.84
1:A:558[A]:GLU:CD	1:A:558[A]:GLU:H	1.81	0.83
4:A:703:CB3:C6	4:A:703:CB3:H15	2.09	0.81
4:B:703:CB3:C15	4:B:703:CB3:C5	2.62	0.78
1:A:425:ILE:CD1	1:A:428:GLY:HA3	2.15	0.76
1:A:498:ASN:OD1	1:A:499:ASP:N	2.18	0.76
1:A:173:ARG:NH2	1:A:569:ARG:HA	2.01	0.75
1:A:354:GLY:O	1:B:358:ARG:NH2	2.21	0.74
4:A:703:CB3:C5	4:A:703:CB3:H15	2.17	0.74
1:A:316:HIS:O	1:A:318:HIS:ND1	2.21	0.73
1:A:314:VAL:HG12	1:A:317:VAL:HG23	1.71	0.72
1:B:315:PRO:HG2	1:B:316:HIS:ND1	2.03	0.72
4:A:703:CB3:C14	4:A:703:CB3:H5	2.20	0.71
4:B:703:CB3:C5	4:B:703:CB3:C14	2.66	0.71
1:A:429:TYR:H	1:A:429:TYR:HD1	1.45	0.65
1:B:81:ARG:NH1	3:B:702:NDP:O2X	2.32	0.63
4:A:703:CB3:C14	4:A:703:CB3:C5	2.76	0.62
4:B:703:CB3:C6	4:B:703:CB3:H15	2.30	0.62
1:A:374:PHE:H	4:A:703:CB3:HG2	1.64	0.62

Continued on next page...

Continued from previous page...

Atom-1	Atom-2	Interatomic distance (Å)	Clash overlap (Å)
1:B:580:GLU:H	1:B:580:GLU:CD	2.03	0.62
1:B:558[A]:GLU:OE1	1:B:558[A]:GLU:N	2.27	0.61
1:B:310:LEU:HB3	1:B:311:ILE:HD12	1.82	0.61
1:A:176:ARG:HG3	1:A:242:PRO:HD2	1.81	0.61
1:A:324:GLU:HG3	1:A:368:LEU:HD12	1.81	0.61
1:B:81:ARG:HH12	3:B:702:NDP:P2B	2.27	0.58
1:A:291:ALA:N	1:A:292:PRO:HD2	2.20	0.56
4:B:703:CB3:C15	4:B:703:CB3:C6	2.82	0.56
1:A:173:ARG:HH22	1:A:569:ARG:HA	1.71	0.55
1:A:554:THR:HA	1:A:557:VAL:HG23	1.89	0.54
1:B:341:MET:HB2	1:B:349:VAL:HG12	1.89	0.54
1:A:353:PHE:CE2	1:B:506:ILE:HG13	2.43	0.54
1:B:502:GLU:HB3	1:B:541:LYS:HB2	1.90	0.53
1:A:294:LEU:O	1:A:298:ASP:HB2	2.09	0.53
1:B:88:PRO:HD2	5:B:704:BOD:C6	2.39	0.52
1:A:327:TYR:CE2	1:A:331:ILE:HD11	2.44	0.52
1:A:138:GLU:HA	1:A:142:LYS:HG2	1.91	0.51
1:B:415:ARG:HH11	1:B:487:PRO:HD3	1.76	0.51
1:A:42:THR:HG23	1:A:146:ASP:OD2	2.11	0.51
1:B:375:TRP:CH2	1:B:379:LEU:HD22	2.44	0.51
1:A:37:ARG:NH2	1:B:299:GLU:OE1	2.44	0.51
1:A:558[A]:GLU:N	1:A:558[A]:GLU:CD	2.57	0.51
1:A:314:VAL:O	1:A:320:ARG:NH2	2.44	0.50
1:A:314:VAL:HG11	1:A:567:GLU:HB3	1.92	0.50
1:A:384:TRP:CD1	1:A:389:ASP:HB3	2.46	0.50
1:A:400:VAL:HG12	1:A:402:ILE:HG12	1.94	0.49
1:A:13:PRO:HD3	1:A:174:VAL:O	2.13	0.49
1:B:316:HIS:ND1	1:B:316:HIS:N	2.60	0.49
4:B:703:CB3:CP2	4:B:703:CB3:H13	2.42	0.49
1:B:293:VAL:HG12	1:B:297:MET:CE	2.42	0.48
1:A:327:TYR:CZ	1:A:331:ILE:HD11	2.48	0.48
1:A:490:HIS:CD2	1:A:490:HIS:H	2.31	0.48
4:A:703:CB3:C6	4:A:703:CB3:C15	2.75	0.48
1:A:87:MET:HE2	1:A:92:ARG:HB3	1.96	0.48
1:A:311:ILE:H	1:A:336:ASN:HD21	1.60	0.48
1:B:312:ARG:CG	1:B:313:ALA:N	2.77	0.48
1:A:12:THR:HG23	1:A:13:PRO:HD2	1.95	0.47
1:A:404:ASP:HA	1:A:407:VAL:HG22	1.96	0.47
1:A:436:PHE:HB3	1:A:452:VAL:HB	1.96	0.47
1:A:175:ALA:HB3	1:A:242:PRO:HG2	1.97	0.46
1:B:608:MET:HE2	4:B:703:CB3:H16	1.98	0.46

Continued on next page...

Continued from previous page...

Atom-1	Atom-2	Interatomic distance (Å)	Clash overlap (Å)
1:B:320:ARG:HB3	1:B:325:PHE:CD2	2.50	0.46
1:A:429:TYR:CD1	1:A:429:TYR:N	2.75	0.46
1:A:173:ARG:HD3	1:A:244:ASP:OD1	2.16	0.46
1:B:101:VAL:O	1:B:126:VAL:HA	2.15	0.46
1:B:400:VAL:HG12	1:B:402:ILE:HG12	1.96	0.46
1:A:137:LEU:HD23	1:A:148:ILE:HD13	1.98	0.45
1:A:32:PHE:CE1	5:A:704:BOD:C7	2.99	0.45
1:B:192:ILE:H	1:B:192:ILE:HG13	1.58	0.45
1:A:37:ARG:HH21	1:B:299:GLU:HG2	1.81	0.45
1:A:544:ILE:HD13	1:B:354:GLY:HA3	1.98	0.45
1:B:130:LEU:HD13	1:B:156:LEU:HD22	1.99	0.45
1:B:463:ARG:HH22	1:B:584:GLU:CD	2.20	0.45
1:B:84:TRP:O	1:B:92:ARG:NH2	2.50	0.45
1:B:323:GLU:HB2	1:B:571:PHE:HE2	1.82	0.44
1:A:27:HIS:O	1:A:239:ASN:ND2	2.50	0.44
1:A:405:LYS:HB3	1:A:610:VAL:HG12	1.99	0.44
1:A:427:PRO:HD3	1:A:440:TYR:CG	2.53	0.44
4:B:703:CB3:CP2	4:B:703:CB3:C13	2.95	0.44
1:B:315:PRO:HG2	1:B:316:HIS:N	2.33	0.44
4:A:703:CB3:C15	4:A:703:CB3:H5	2.36	0.43
1:A:169:LEU:HD12	1:A:248:LEU:HD12	2.00	0.43
1:B:368:LEU:HD22	1:B:368:LEU:H	1.83	0.43
1:B:192:ILE:HD12	1:B:193:LEU:HG	2.01	0.43
1:A:232:ILE:HG12	1:A:246:VAL:HG12	2.00	0.43
1:A:353:PHE:CE1	1:B:496:TYR:CB	2.88	0.43
1:A:491:LEU:HD11	1:A:508:TYR:HD2	1.82	0.43
1:A:9:VAL:HG21	1:A:184:PHE:CE1	2.54	0.42
1:B:131:PRO:HG3	1:B:163:LEU:HD11	2.00	0.42
1:A:353:PHE:CD1	1:B:496:TYR:CG	3.07	0.42
1:B:511:SER:HG	2:B:701:UMP:H3'	1.84	0.42
1:B:298:ASP:OD1	1:B:298:ASP:N	2.53	0.42
1:A:317:VAL:HG12	1:A:319:PHE:O	2.19	0.42
1:A:502:GLU:OE1	1:A:541:LYS:HD3	2.19	0.42
1:B:381:GLU:O	1:B:384:TRP:HB3	2.19	0.42
1:B:382:LEU:HD23	1:B:527:LEU:HD23	2.02	0.42
1:B:74:PHE:CE2	1:B:98:LEU:HB2	2.55	0.42
1:B:231:PHE:HE1	1:B:233:SER:HB3	1.84	0.41
1:B:23:LEU:HA	1:B:24:PRO:HD3	1.83	0.41
1:A:173:ARG:HD2	1:A:246:VAL:CG2	2.51	0.41
1:B:577:LEU:HD11	1:B:594:GLU:HB2	2.02	0.41
1:A:496:TYR:HB2	1:B:353:PHE:CE1	2.55	0.41

Continued on next page...

Continued from previous page...

Atom-1	Atom-2	Interatomic distance (Å)	Clash overlap (Å)
1:B:10:ALA:HA	1:B:172:THR:HB	2.02	0.41
1:B:231:PHE:CD1	1:B:231:PHE:C	2.94	0.41
1:B:463:ARG:HD3	1:B:536:CYS:HA	2.01	0.41
1:A:314:VAL:HG12	1:A:317:VAL:CG2	2.47	0.41
1:A:382:LEU:HD11	1:A:528:LEU:HD13	2.03	0.41
1:A:539:LYS:HZ2	1:A:539:LYS:HB3	1.86	0.41
1:A:100:ILE:HG12	1:A:125:ARG:HB2	2.03	0.41
1:A:404:ASP:O	1:A:408:THR:HG23	2.21	0.41
1:B:312:ARG:HG3	1:B:313:ALA:H	1.85	0.41
1:A:32:PHE:CZ	5:A:704:BOD:C7	3.03	0.40
5:A:704:BOD:C13	5:A:704:BOD:N6	2.84	0.40
1:B:11:MET:HG2	1:B:15:ARG:HA	2.03	0.40
1:A:99:ASN:HB2	1:A:124:VAL:HG22	2.03	0.40
1:B:87:MET:O	1:B:92:ARG:NH2	2.54	0.40
1:B:326:GLN:HB3	1:B:357:MET:HG2	2.03	0.40
1:B:82:LYS:HD2	3:B:702:NDP:H51A	2.02	0.40

There are no symmetry-related clashes.

5.3 Torsion angles [i](#)

5.3.1 Protein backbone [i](#)

In the following table, the Percentiles column shows the percent Ramachandran outliers of the chain as a percentile score with respect to all X-ray entries followed by that with respect to entries of similar resolution.

The Analysed column shows the number of residues for which the backbone conformation was analysed, and the total number of residues.

Mol	Chain	Analysed	Favoured	Allowed	Outliers	Percentiles	
1	A	502/566 (89%)	485 (97%)	17 (3%)	0	100	100
1	B	502/566 (89%)	476 (95%)	26 (5%)	0	100	100
All	All	1004/1132 (89%)	961 (96%)	43 (4%)	0	100	100

There are no Ramachandran outliers to report.

5.3.2 Protein sidechains ⓘ

In the following table, the Percentiles column shows the percent sidechain outliers of the chain as a percentile score with respect to all X-ray entries followed by that with respect to entries of similar resolution.

The Analysed column shows the number of residues for which the sidechain conformation was analysed, and the total number of residues.

Mol	Chain	Analysed	Rotameric	Outliers	Percentiles	
1	A	444/491 (90%)	418 (94%)	26 (6%)	19	53
1	B	444/491 (90%)	421 (95%)	23 (5%)	23	56
All	All	888/982 (90%)	839 (94%)	49 (6%)	21	54

All (49) residues with a non-rotameric sidechain are listed below:

Mol	Chain	Res	Type
1	A	3	LYS
1	A	9	VAL
1	A	87	MET
1	A	90	LYS
1	A	137	LEU
1	A	144	SER
1	A	161	LEU
1	A	234	LYS
1	A	252	ARG
1	A	310	LEU
1	A	316	HIS
1	A	330	LEU
1	A	342	ASP
1	A	352	LYS
1	A	355	CYS
1	A	378	VAL
1	A	397	GLU
1	A	416	ASN
1	A	429	TYR
1	A	441	LYS
1	A	486	LEU
1	A	492	LEU
1	A	499	ASP
1	A	562	GLU
1	A	580	GLU
1	A	596	VAL
1	B	9	VAL

Continued on next page...

Continued from previous page...

Mol	Chain	Res	Type
1	B	29	THR
1	B	30	THR
1	B	37	ARG
1	B	123	ARG
1	B	137	LEU
1	B	138	GLU
1	B	142	LYS
1	B	143	ASP
1	B	161	LEU
1	B	234	LYS
1	B	252	ARG
1	B	297	MET
1	B	299	GLU
1	B	310	LEU
1	B	312	ARG
1	B	316	HIS
1	B	330	LEU
1	B	349	VAL
1	B	383	LEU
1	B	441	LYS
1	B	552	VAL
1	B	580	GLU

Some sidechains can be flipped to improve hydrogen bonding and reduce clashes. All (1) such sidechains are listed below:

Mol	Chain	Res	Type
1	A	460	GLN

5.3.3 RNA ⓘ

There are no RNA molecules in this entry.

5.4 Non-standard residues in protein, DNA, RNA chains ⓘ

There are no non-standard protein/DNA/RNA residues in this entry.

5.5 Carbohydrates ⓘ

There are no monosaccharides in this entry.

5.6 Ligand geometry

8 ligands are modelled in this entry.

In the following table, the Counts columns list the number of bonds (or angles) for which Mogul statistics could be retrieved, the number of bonds (or angles) that are observed in the model and the number of bonds (or angles) that are defined in the Chemical Component Dictionary. The Link column lists molecule types, if any, to which the group is linked. The Z score for a bond length (or angle) is the number of standard deviations the observed value is removed from the expected value. A bond length (or angle) with $|Z| > 2$ is considered an outlier worth inspection. RMSZ is the root-mean-square of all Z scores of the bond lengths (or angles).

Mol	Type	Chain	Res	Link	Bond lengths			Bond angles		
					Counts	RMSZ	# Z > 2	Counts	RMSZ	# Z > 2
3	NDP	B	702	-	45,52,52	1.04	2 (4%)	53,80,80	1.13	4 (7%)
3	NDP	A	702	-	45,52,52	1.06	3 (6%)	53,80,80	1.15	5 (9%)
5	BOD	A	704	-	31,31,31	1.15	3 (9%)	39,43,43	2.44	17 (43%)
4	CB3	A	703	-	30,37,37	1.17	3 (10%)	38,51,51	2.65	8 (21%)
4	CB3	B	703	-	30,37,37	1.19	3 (10%)	38,51,51	2.61	8 (21%)
2	UMP	A	701	-	18,21,21	0.68	0	21,31,31	0.96	0
2	UMP	B	701	-	18,21,21	0.70	0	21,31,31	0.91	0
5	BOD	B	704	-	31,31,31	1.19	4 (12%)	39,43,43	2.34	12 (30%)

In the following table, the Chirals column lists the number of chiral outliers, the number of chiral centers analysed, the number of these observed in the model and the number defined in the Chemical Component Dictionary. Similar counts are reported in the Torsion and Rings columns. '-' means no outliers of that kind were identified.

Mol	Type	Chain	Res	Link	Chirals	Torsions	Rings
3	NDP	B	702	-	-	6/30/77/77	0/5/5/5
3	NDP	A	702	-	-	2/30/77/77	0/5/5/5
5	BOD	A	704	-	-	8/14/24/24	0/4/4/4
4	CB3	A	703	-	-	7/21/28/28	0/3/3/3
4	CB3	B	703	-	-	5/21/28/28	0/3/3/3
2	UMP	A	701	-	-	2/7/22/22	0/2/2/2
2	UMP	B	701	-	-	2/7/22/22	0/2/2/2
5	BOD	B	704	-	-	6/14/24/24	0/4/4/4

All (18) bond length outliers are listed below:

Mol	Chain	Res	Type	Atoms	Z	Observed(Å)	Ideal(Å)
5	A	704	BOD	C5-C3	-3.80	1.39	1.49

Continued on next page...

Continued from previous page...

Mol	Chain	Res	Type	Atoms	Z	Observed(Å)	Ideal(Å)
4	B	703	CB3	CP2-CP3	3.69	1.29	1.18
3	B	702	NDP	C6N-C5N	3.65	1.39	1.33
3	A	702	NDP	C6N-C5N	3.59	1.39	1.33
4	A	703	CB3	C4A-C8A	3.51	1.48	1.41
4	B	703	CB3	C4A-C8A	3.44	1.48	1.41
5	B	704	BOD	C1-N	3.43	1.37	1.32
4	A	703	CB3	CP2-CP3	3.27	1.27	1.18
5	B	704	BOD	C1-N1	3.13	1.36	1.32
5	B	704	BOD	C5-C3	-3.02	1.41	1.49
5	A	704	BOD	C1-N1	3.02	1.36	1.32
3	A	702	NDP	C5A-C4A	2.76	1.48	1.40
3	B	702	NDP	C5A-C4A	2.62	1.47	1.40
5	A	704	BOD	C1-N	2.48	1.35	1.32
5	B	704	BOD	O-C1	2.16	1.38	1.33
4	A	703	CB3	C8A-N1	-2.16	1.34	1.37
3	A	702	NDP	C2A-N3A	2.13	1.35	1.32
4	B	703	CB3	C8A-N1	-2.05	1.34	1.37

All (54) bond angle outliers are listed below:

Mol	Chain	Res	Type	Atoms	Z	Observed(°)	Ideal(°)
4	A	703	CB3	C4A-C4-N3	-10.04	117.40	124.40
4	B	703	CB3	C4A-C4-N3	-9.89	117.50	124.40
4	B	703	CB3	C4A-C8A-N1	-9.05	118.69	123.60
4	A	703	CB3	C4A-C8A-N1	-8.79	118.83	123.60
5	A	704	BOD	C13-N3-C12	6.36	125.56	111.52
5	B	704	BOD	N-C1-N1	-6.15	119.66	127.99
5	A	704	BOD	N-C1-N1	-5.11	121.06	127.99
5	B	704	BOD	C2-N-C1	5.06	121.12	114.97
5	A	704	BOD	C4-N1-C1	4.87	120.89	114.97
5	B	704	BOD	C4-N1-C1	4.77	120.77	114.97
5	B	704	BOD	C13-N3-C12	4.74	121.99	111.52
5	A	704	BOD	C12-C11-N2	-4.40	102.15	110.70
4	A	703	CB3	C6-C9-N10	-4.31	107.26	114.18
5	B	704	BOD	N4-C17-N5	-4.25	120.52	125.70
5	A	704	BOD	N4-C17-N5	-4.09	120.72	125.70
4	B	703	CB3	C6-C9-N10	-4.03	107.71	114.18
5	A	704	BOD	C2-N-C1	3.92	119.73	114.97
4	A	703	CB3	C4-N3-C2	3.87	122.08	115.93
4	B	703	CB3	C4-N3-C2	3.80	121.96	115.93
5	B	704	BOD	C14-N2-C11	3.50	119.24	111.52
5	A	704	BOD	C17-N5-C18	3.48	120.84	116.99

Continued on next page...

Continued from previous page...

Mol	Chain	Res	Type	Atoms	Z	Observed(°)	Ideal(°)
3	B	702	NDP	N3A-C2A-N1A	-3.31	123.50	128.68
4	A	703	CB3	N1-C2-N3	-3.31	122.81	127.22
5	B	704	BOD	C17-N5-C18	3.28	120.61	116.99
4	B	703	CB3	N1-C2-N3	-3.25	122.89	127.22
3	A	702	NDP	N3A-C2A-N1A	-3.21	123.67	128.68
5	B	704	BOD	C12-C11-N2	-3.19	104.51	110.70
5	A	704	BOD	C3-C4-N1	-3.12	119.17	124.32
3	B	702	NDP	PN-O3-PA	-3.03	122.42	132.83
5	B	704	BOD	C-O-C1	3.02	122.41	117.58
3	A	702	NDP	PN-O3-PA	-2.93	122.77	132.83
3	A	702	NDP	C4A-C5A-N7A	-2.72	106.56	109.40
5	A	704	BOD	C14-N2-C11	2.70	117.48	111.52
3	B	702	NDP	C4A-C5A-N7A	-2.70	106.58	109.40
5	A	704	BOD	C-O-C1	2.59	121.72	117.58
4	A	703	CB3	C6-C5-C4A	-2.55	118.83	122.65
5	A	704	BOD	C2-C3-C4	2.55	118.64	114.66
5	A	704	BOD	C8-C9-N2	-2.46	117.99	121.38
3	B	702	NDP	C1D-N1N-C2N	-2.44	117.05	121.11
5	B	704	BOD	C3-C2-N	-2.43	120.32	124.32
5	B	704	BOD	C16-N4-C17	2.41	120.91	116.44
4	B	703	CB3	C6-C5-C4A	-2.39	119.08	122.65
5	A	704	BOD	C3-C2-N	-2.32	120.50	124.32
3	A	702	NDP	C1D-N1N-C2N	-2.29	117.30	121.11
4	B	703	CB3	C8-C8A-N1	2.29	122.18	118.69
3	A	702	NDP	O4D-C1D-N1N	2.27	112.49	108.06
5	B	704	BOD	N7-C17-N4	2.27	119.74	117.44
5	A	704	BOD	C6-C5-C3	-2.24	117.47	121.36
4	A	703	CB3	C8-C8A-N1	2.23	122.10	118.69
4	B	703	CB3	C2-N1-C8A	2.13	121.60	116.33
5	A	704	BOD	C16-N4-C17	2.13	120.38	116.44
4	A	703	CB3	C2-N1-C8A	2.11	121.55	116.33
5	A	704	BOD	N7-C17-N4	2.09	119.56	117.44
5	A	704	BOD	C14-C13-N3	2.02	114.62	110.70

There are no chirality outliers.

All (38) torsion outliers are listed below:

Mol	Chain	Res	Type	Atoms
4	A	703	CB3	C11-C-N-CA
4	A	703	CB3	CB-CA-N-C
4	A	703	CB3	CT-CA-CB-CG
4	B	703	CB3	C11-C-N-CA

Continued on next page...

Continued from previous page...

Mol	Chain	Res	Type	Atoms
4	B	703	CB3	CT-CA-CB-CG
4	A	703	CB3	O-C-N-CA
4	B	703	CB3	O-C-N-CA
3	B	702	NDP	O4B-C4B-C5B-O5B
3	B	702	NDP	C3B-C4B-C5B-O5B
4	B	703	CB3	N-CA-CB-CG
4	A	703	CB3	CA-CB-CG-CD
4	A	703	CB3	N-CA-CB-CG
4	B	703	CB3	CA-CB-CG-CD
4	A	703	CB3	CT-CA-N-C
5	A	704	BOD	N-C1-O-C
3	A	702	NDP	C4D-C5D-O5D-PN
2	B	701	UMP	O4'-C4'-C5'-O5'
3	B	702	NDP	C4D-C5D-O5D-PN
2	A	701	UMP	O4'-C4'-C5'-O5'
3	A	702	NDP	O4D-C1D-N1N-C2N
5	A	704	BOD	N1-C1-O-C
3	B	702	NDP	O4D-C1D-N1N-C2N
5	B	704	BOD	C18-C15-N3-C13
3	B	702	NDP	C2D-C1D-N1N-C2N
5	A	704	BOD	C16-C15-N3-C12
5	B	704	BOD	C16-C15-N3-C12
5	A	704	BOD	C18-C15-N3-C13
5	A	704	BOD	C2-C3-C5-C10
5	B	704	BOD	C2-C3-C5-C10
5	B	704	BOD	C4-C3-C5-C10
5	A	704	BOD	C4-C3-C5-C6
5	A	704	BOD	C4-C3-C5-C10
5	B	704	BOD	C4-C3-C5-C6
2	B	701	UMP	C3'-C4'-C5'-O5'
5	A	704	BOD	C2-C3-C5-C6
5	B	704	BOD	C2-C3-C5-C6
2	A	701	UMP	C3'-C4'-C5'-O5'
3	B	702	NDP	O4D-C1D-N1N-C6N

There are no ring outliers.

6 monomers are involved in 24 short contacts:

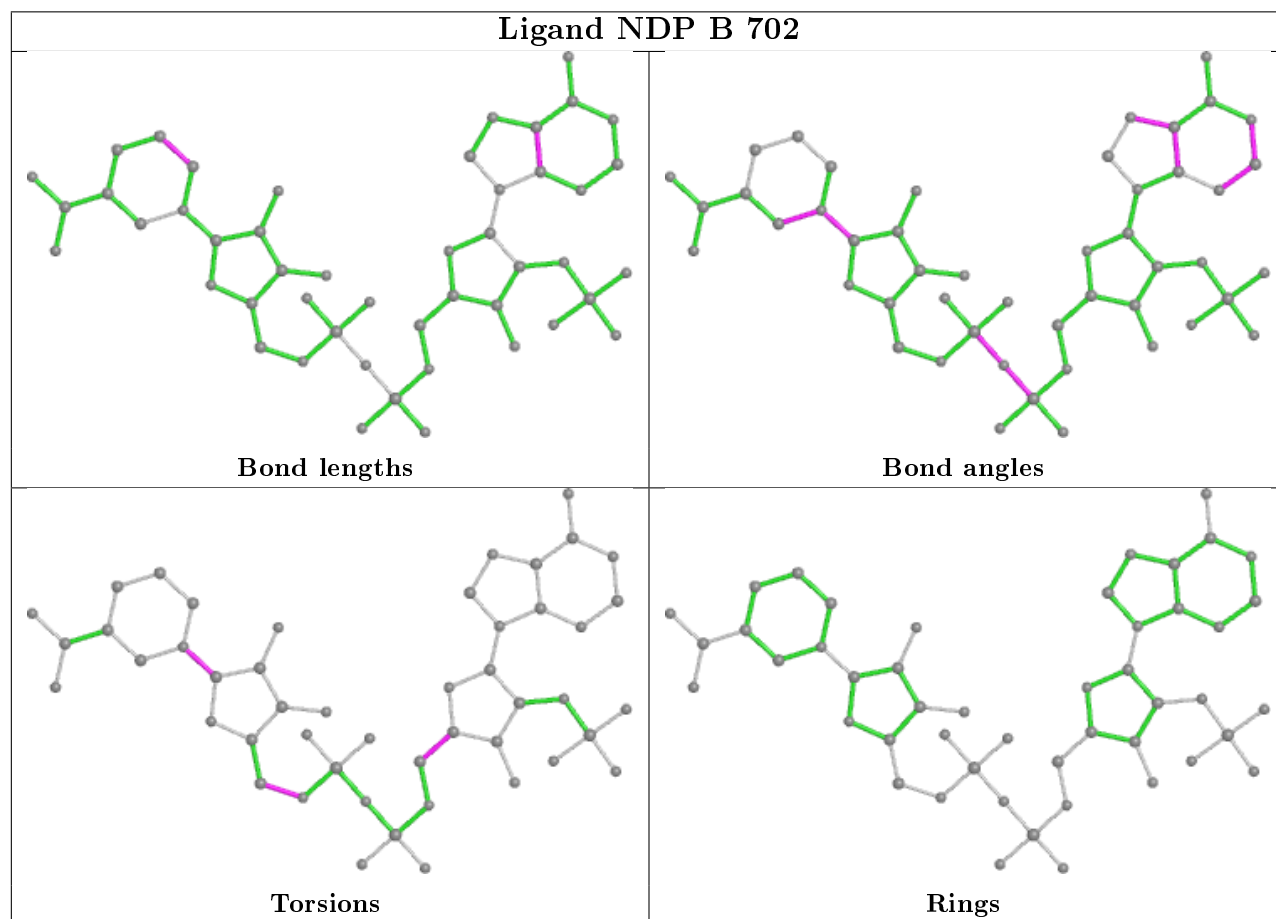
Mol	Chain	Res	Type	Clashes	Symm-Clashes
3	B	702	NDP	3	0
5	A	704	BOD	3	0
4	A	703	CB3	8	0

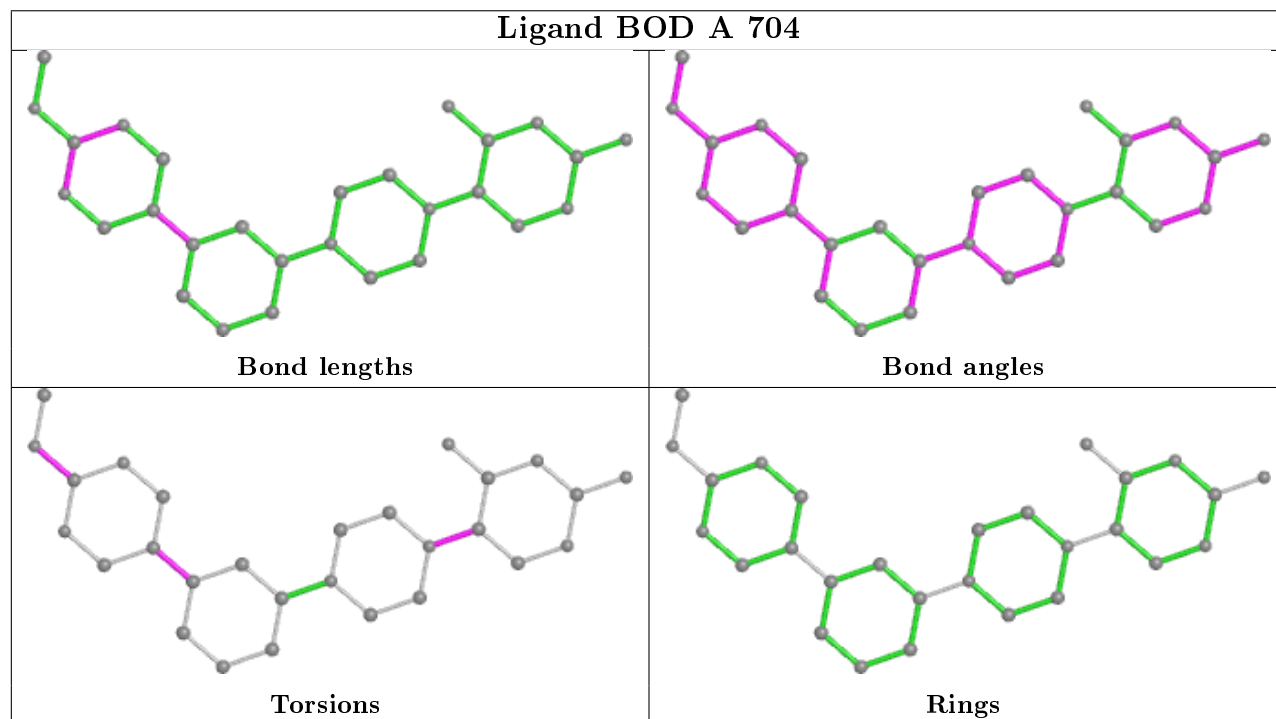
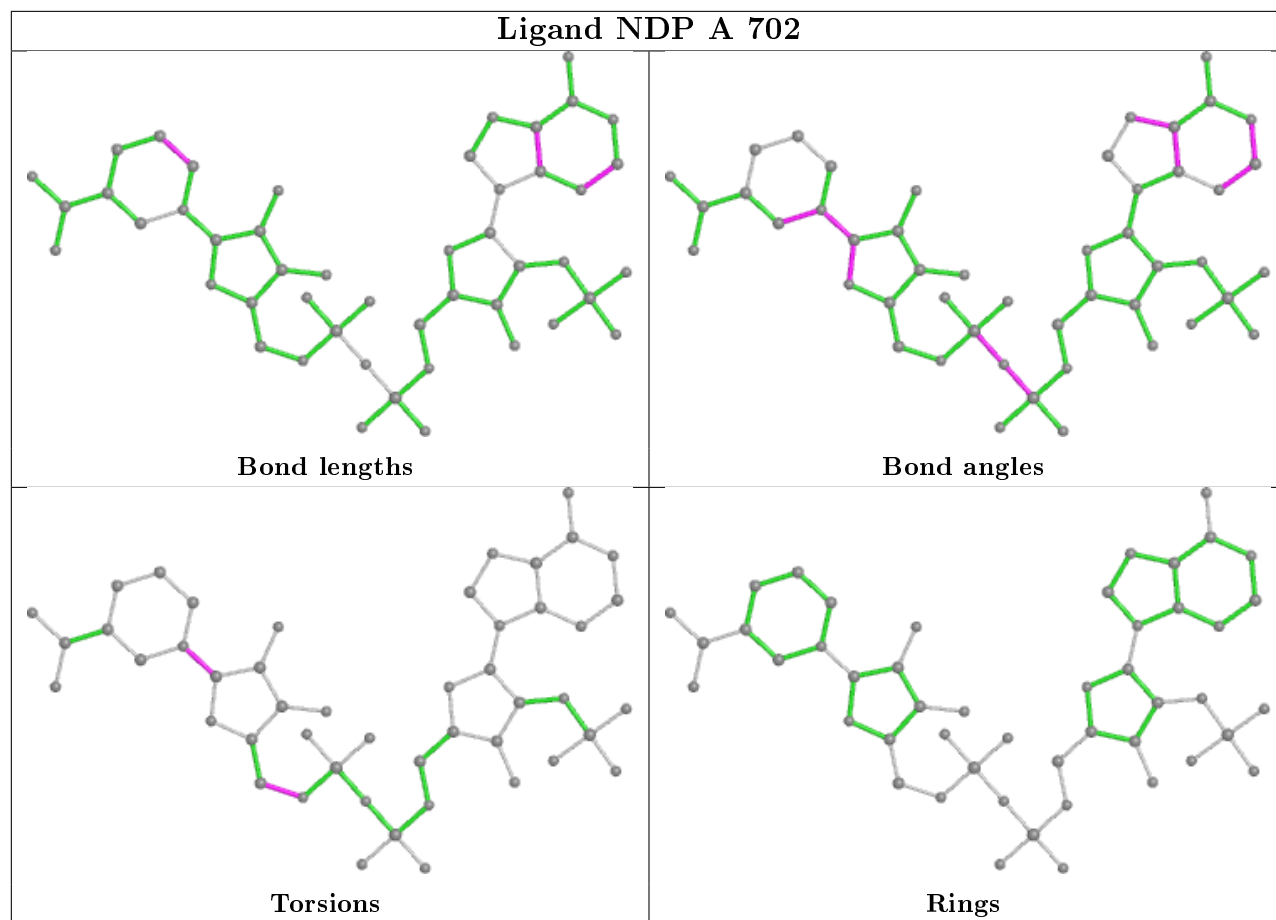
Continued on next page...

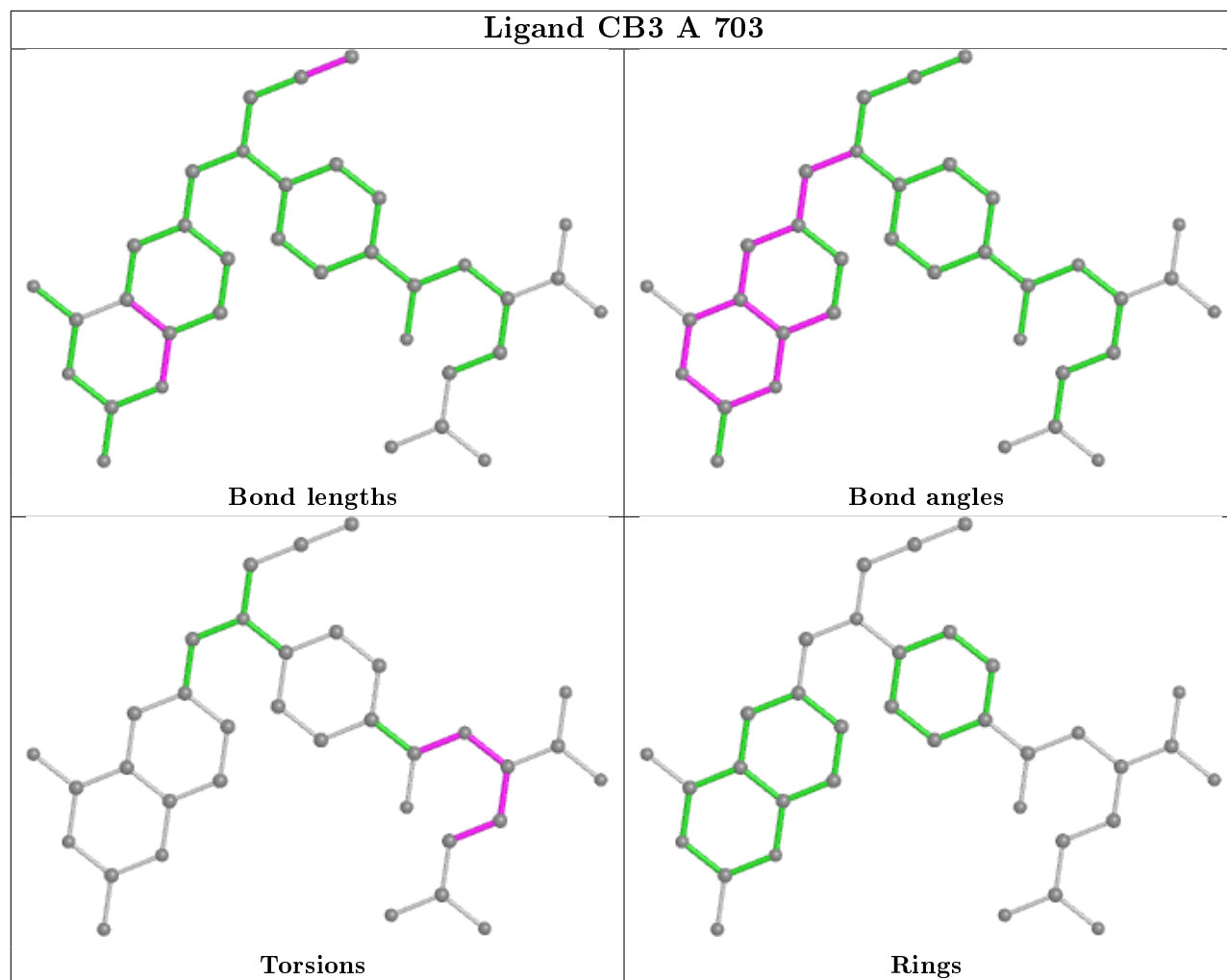
Continued from previous page...

Mol	Chain	Res	Type	Clashes	Symm-Clashes
4	B	703	CB3	8	0
2	B	701	UMP	1	0
5	B	704	BOD	1	0

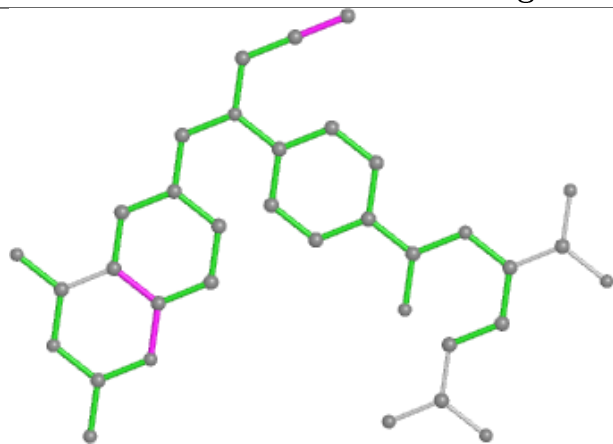
The following is a two-dimensional graphical depiction of Mogul quality analysis of bond lengths, bond angles, torsion angles, and ring geometry for all instances of the Ligand of Interest. In addition, ligands with molecular weight > 250 and outliers as shown on the validation Tables will also be included. For torsion angles, if less than 5% of the Mogul distribution of torsion angles is within 10 degrees of the torsion angle in question, then that torsion angle is considered an outlier. Any bond that is central to one or more torsion angles identified as an outlier by Mogul will be highlighted in the graph. For rings, the root-mean-square deviation (RMSD) between the ring in question and similar rings identified by Mogul is calculated over all ring torsion angles. If the average RMSD is greater than 60 degrees and the minimal RMSD between the ring in question and any Mogul-identified rings is also greater than 60 degrees, then that ring is considered an outlier. The outliers are highlighted in purple. The color gray indicates Mogul did not find sufficient equivalents in the CSD to analyse the geometry.



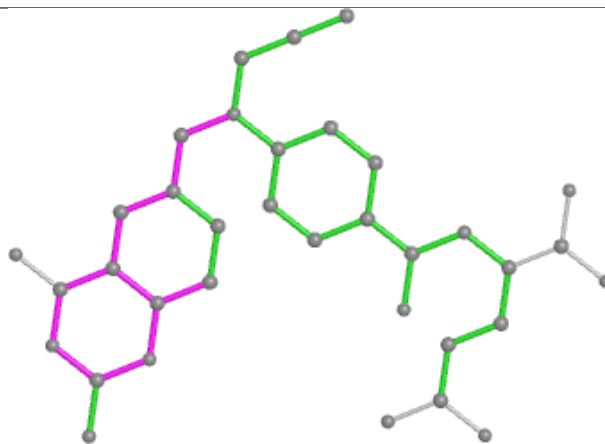




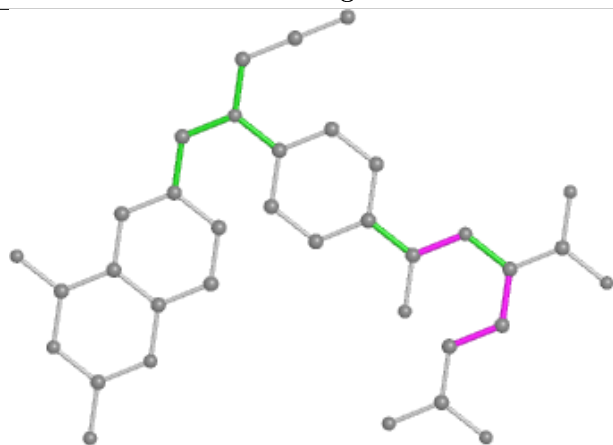
Ligand CB3 B 703



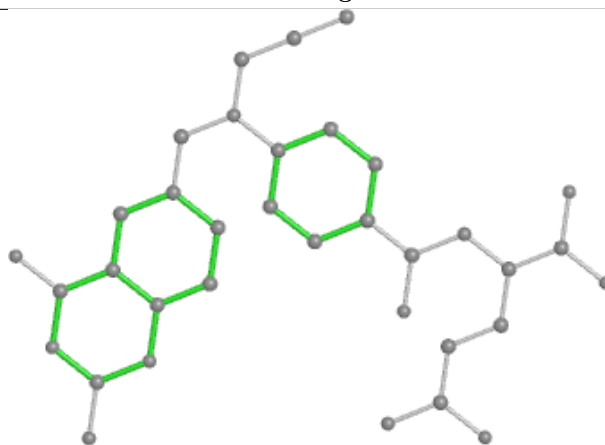
Bond lengths



Bond angles

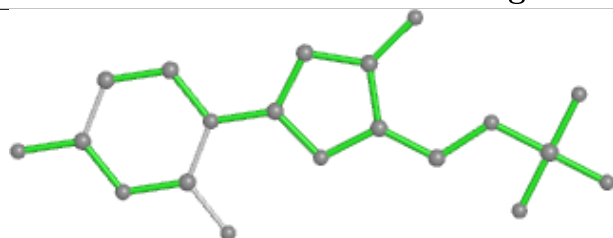


Torsions

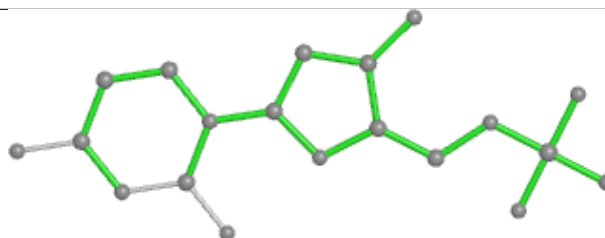


Rings

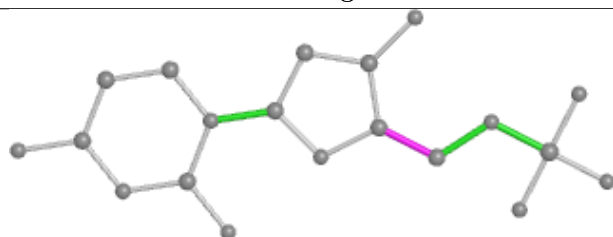
Ligand UMP A 701



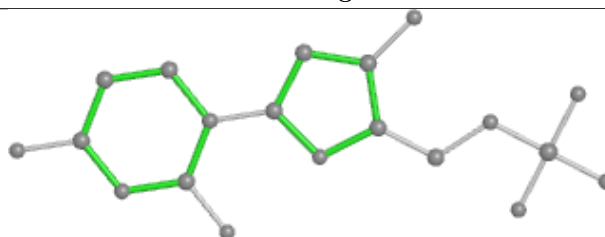
Bond lengths



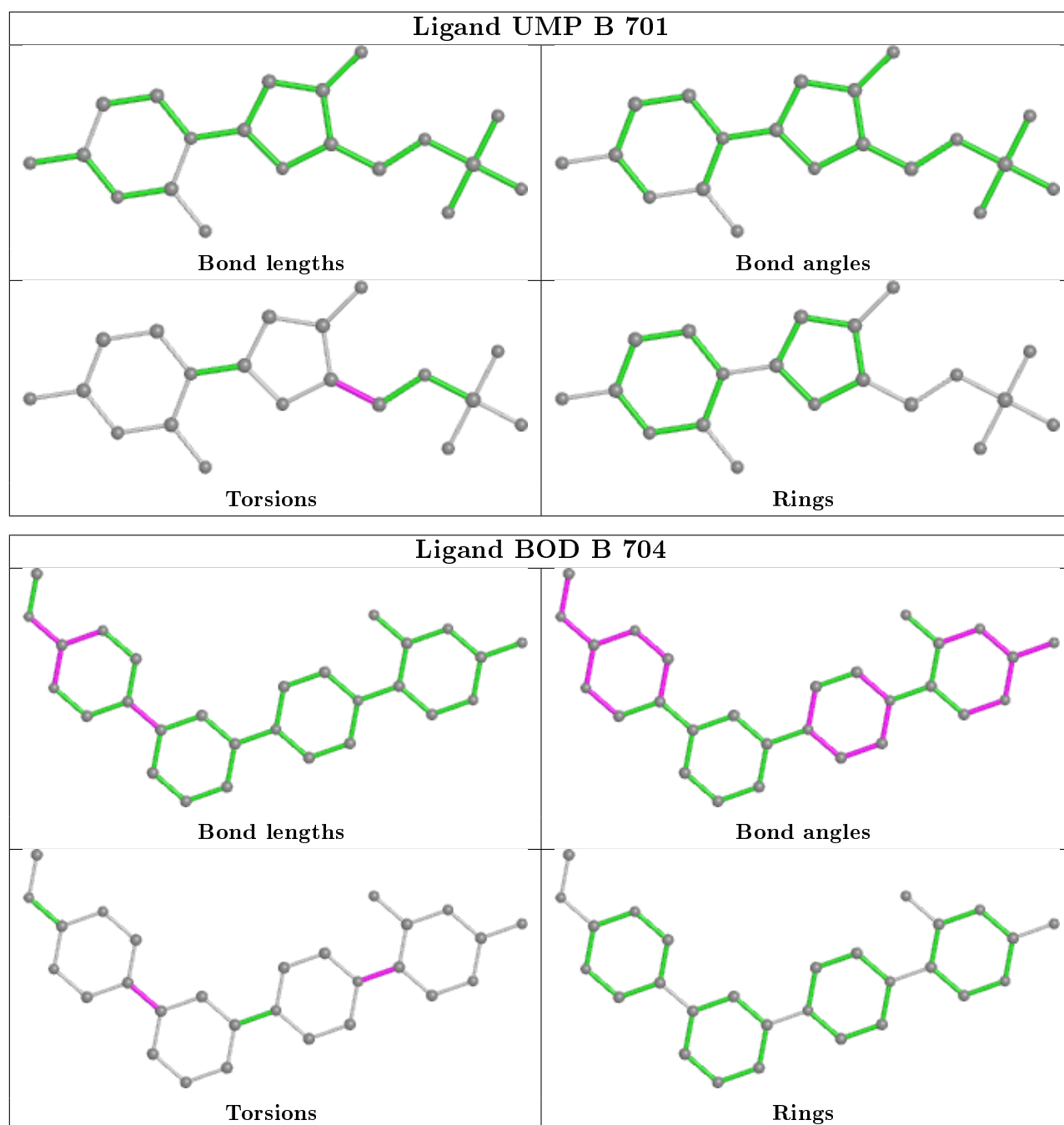
Bond angles



Torsions



Rings



5.7 Other polymers [i](#)

There are no such residues in this entry.

5.8 Polymer linkage issues [i](#)

There are no chain breaks in this entry.

6 Fit of model and data [i](#)

6.1 Protein, DNA and RNA chains [i](#)

In the following table, the column labelled ‘#RSRZ> 2’ contains the number (and percentage) of RSRZ outliers, followed by percent RSRZ outliers for the chain as percentile scores relative to all X-ray entries and entries of similar resolution. The OWAB column contains the minimum, median, 95th percentile and maximum values of the occupancy-weighted average B-factor per residue. The column labelled ‘Q< 0.9’ lists the number of (and percentage) of residues with an average occupancy less than 0.9.

Mol	Chain	Analysed	<RSRZ>	#RSRZ>2	OWAB(Å ²)	Q<0.9
1	A	511/566 (90%)	-0.43	8 (1%) 72 66	21, 44, 94, 131	0
1	B	511/566 (90%)	-0.42	3 (0%) 89 86	21, 44, 97, 132	0
All	All	1022/1132 (90%)	-0.43	11 (1%) 80 75	21, 44, 95, 132	0

All (11) RSRZ outliers are listed below:

Mol	Chain	Res	Type	RSRZ
1	A	292	PRO	3.3
1	B	72	SER	3.0
1	A	610	VAL	2.9
1	B	43	PRO	2.9
1	A	607	GLU	2.6
1	B	71	ALA	2.5
1	A	285	SER	2.3
1	A	291	ALA	2.1
1	A	606	MET	2.1
1	A	609	ALA	2.1
1	A	73	ARG	2.0

6.2 Non-standard residues in protein, DNA, RNA chains [i](#)

There are no non-standard protein/DNA/RNA residues in this entry.

6.3 Carbohydrates [i](#)

There are no monosaccharides in this entry.

6.4 Ligands ⓘ

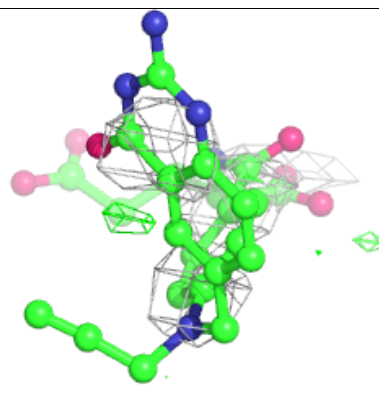
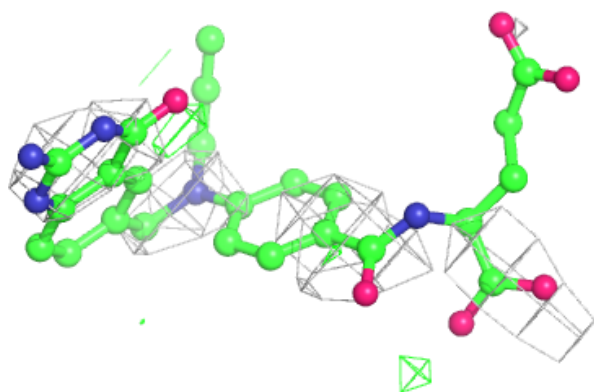
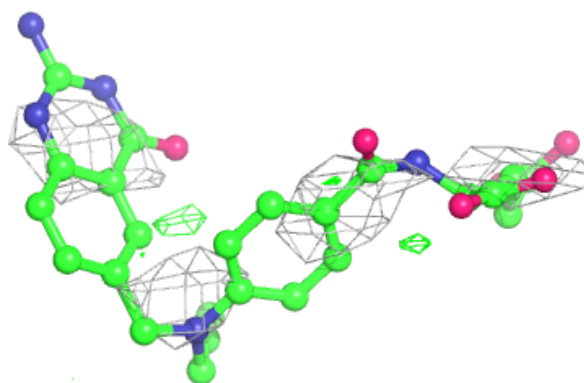
In the following table, the Atoms column lists the number of modelled atoms in the group and the number defined in the chemical component dictionary. The B-factors column lists the minimum, median, 95th percentile and maximum values of B factors of atoms in the group. The column labelled 'Q< 0.9' lists the number of atoms with occupancy less than 0.9.

Mol	Type	Chain	Res	Atoms	RSCC	RSR	B-factors(Å ²)	Q<0.9
4	CB3	A	703	35/35	0.80	0.40	34,35,36,36	35
5	BOD	B	704	28/28	0.85	0.41	37,40,44,44	0
5	BOD	A	704	28/28	0.89	0.35	34,37,41,42	0
4	CB3	B	703	35/35	0.91	0.30	21,22,23,24	35
2	UMP	A	701	20/20	0.92	0.21	75,82,85,86	0
3	NDP	B	702	48/48	0.94	0.25	67,81,116,121	0
2	UMP	B	701	20/20	0.95	0.16	64,67,68,68	0
3	NDP	A	702	48/48	0.97	0.17	37,43,56,56	0

The following is a graphical depiction of the model fit to experimental electron density of all instances of the Ligand of Interest. In addition, ligands with molecular weight > 250 and outliers as shown on the geometry validation Tables will also be included. Each fit is shown from different orientation to approximate a three-dimensional view.

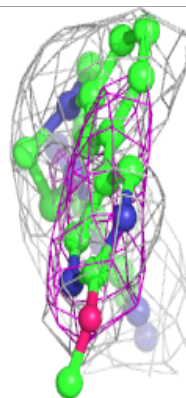
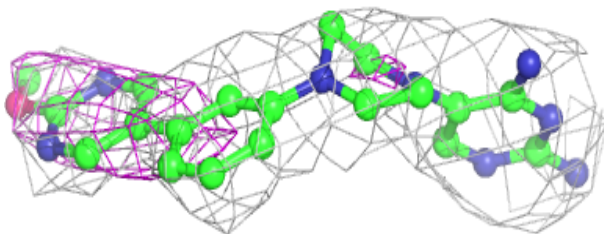
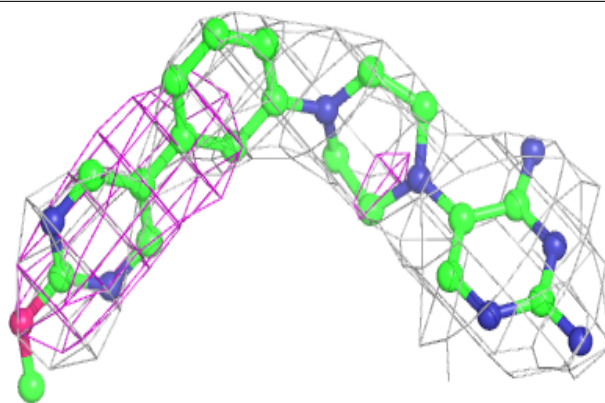
Electron density around CB3 A 703:

2mF_o-DF_c (at 0.7 rmsd) in gray
mF_o-DF_c (at 3 rmsd) in purple (negative)
and green (positive)

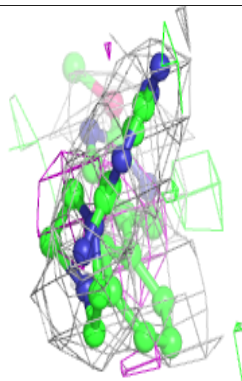
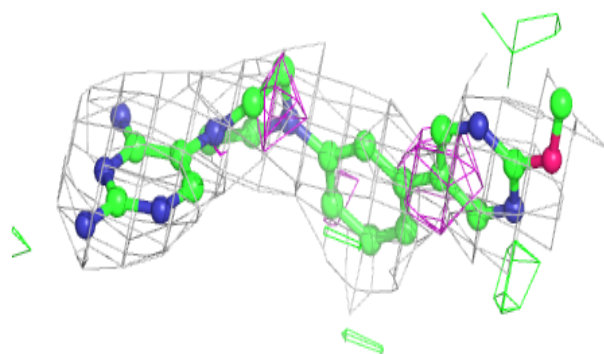
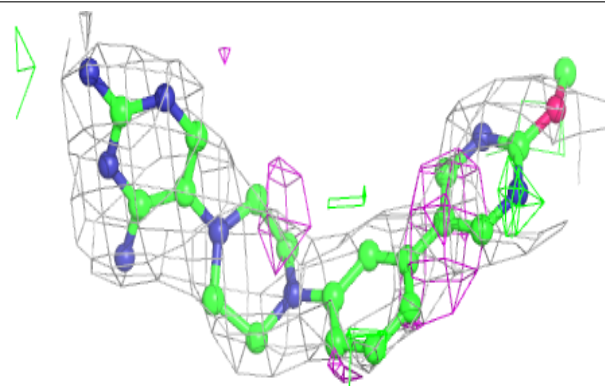


Electron density around BOD B 704:

$2mF_o-DF_c$ (at 0.7 rmsd) in gray
 mF_o-DF_c (at 3 rmsd) in purple (negative)
and green (positive)

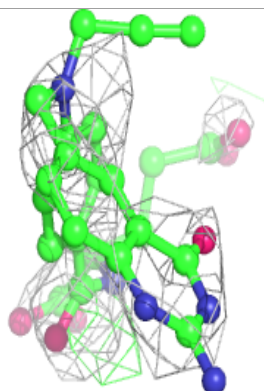
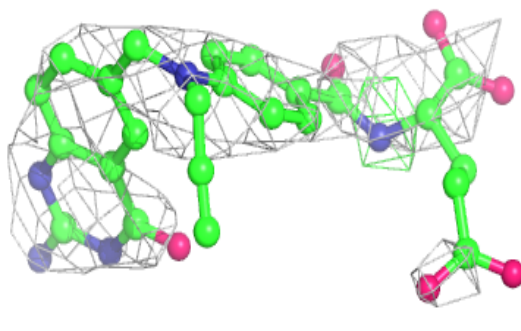
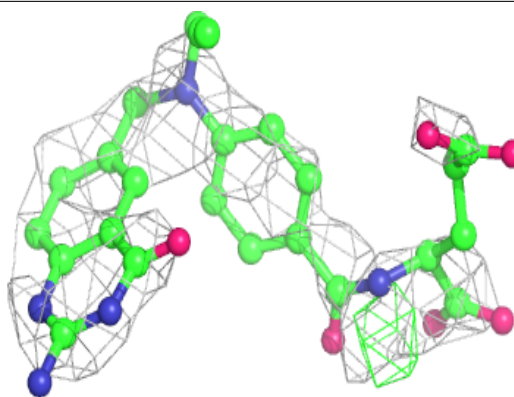
**Electron density around BOD A 704:**

$2mF_o-DF_c$ (at 0.7 rmsd) in gray
 mF_o-DF_c (at 3 rmsd) in purple (negative)
and green (positive)

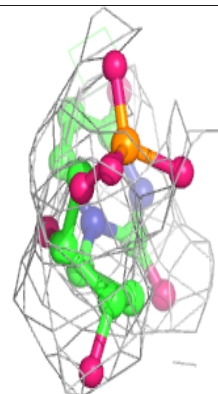
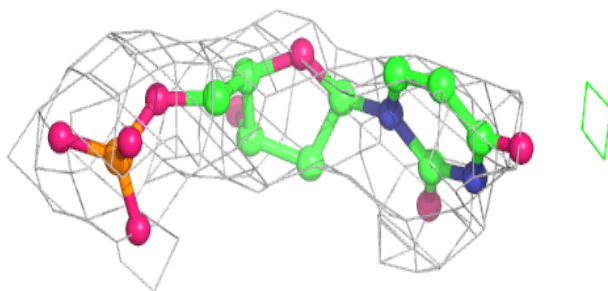
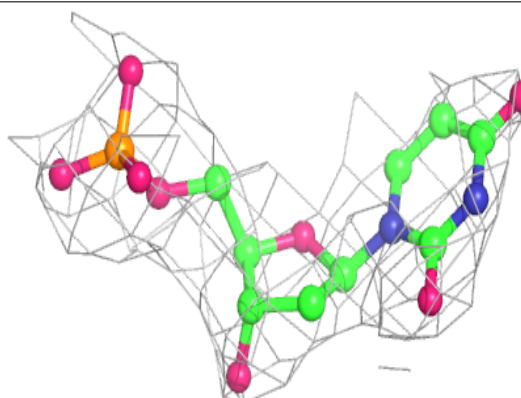


Electron density around CB3 B 703:

$2mF_o-DF_c$ (at 0.7 rmsd) in gray
 mF_o-DF_c (at 3 rmsd) in purple (negative)
and green (positive)

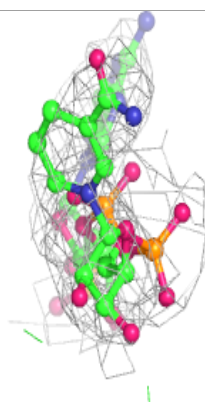
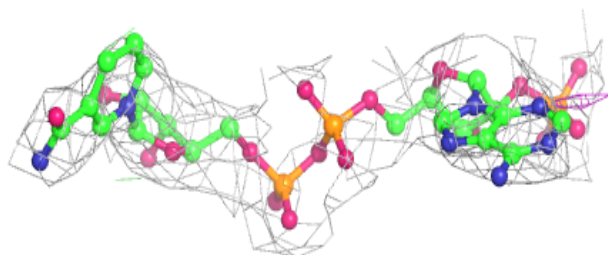
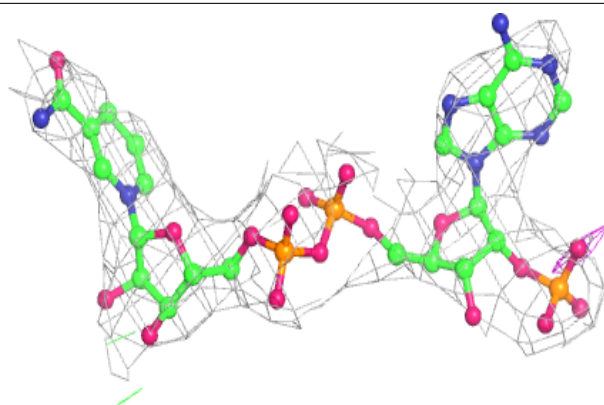
**Electron density around UMP A 701:**

$2mF_o-DF_c$ (at 0.7 rmsd) in gray
 mF_o-DF_c (at 3 rmsd) in purple (negative)
and green (positive)

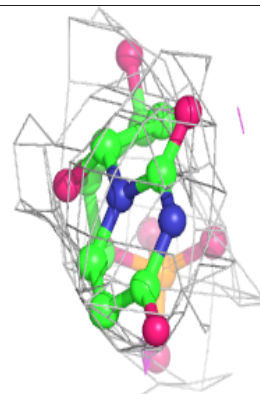
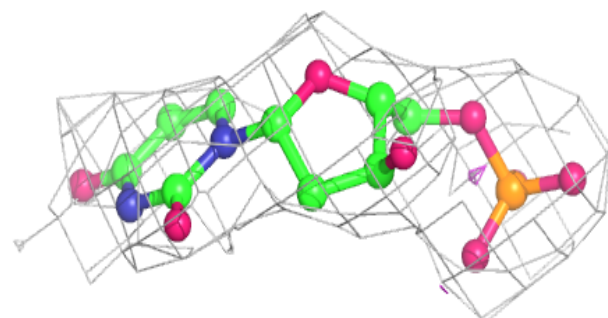
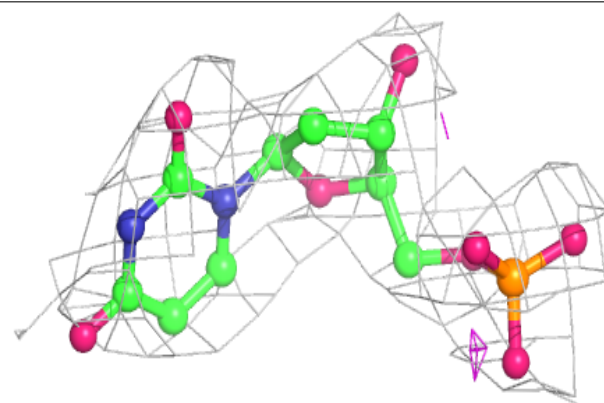


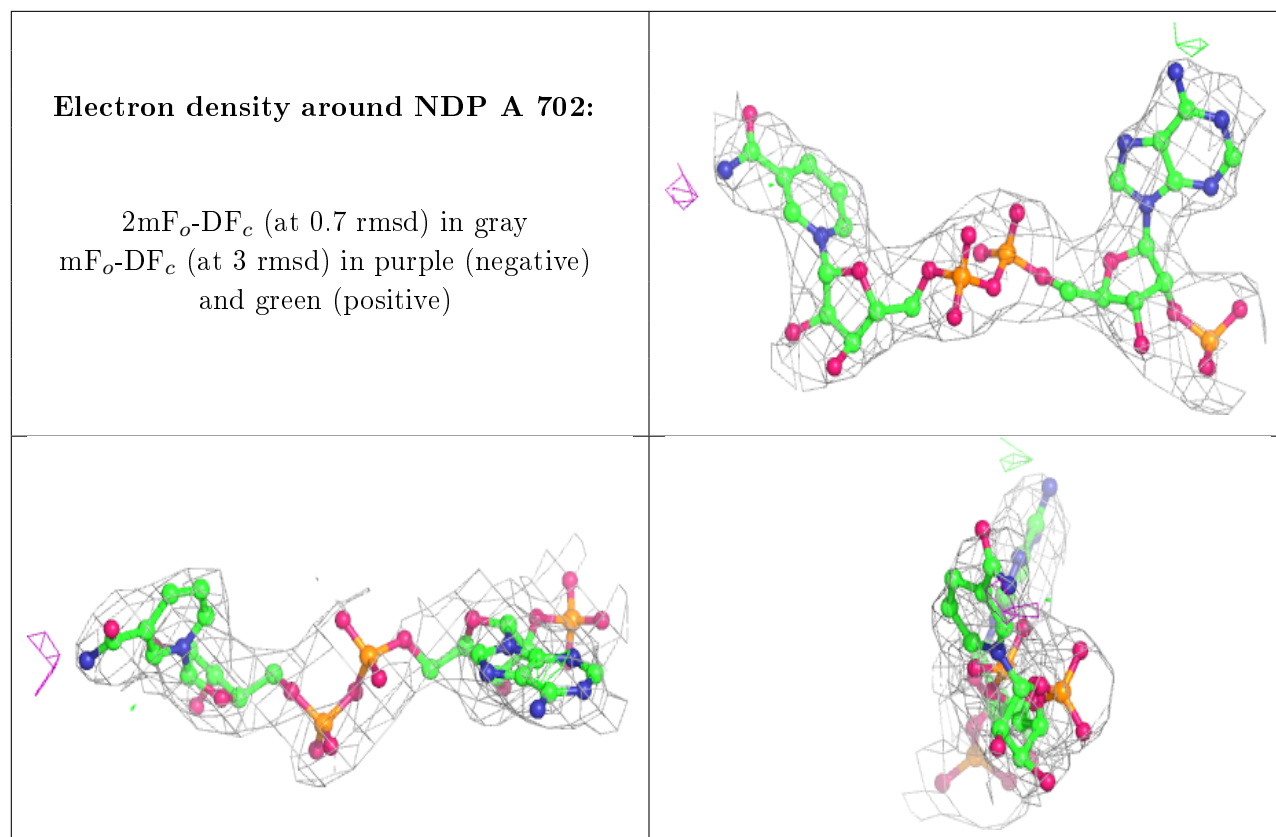
Electron density around NDP B 702:

$2mF_o-DF_c$ (at 0.7 rmsd) in gray
 mF_o-DF_c (at 3 rmsd) in purple (negative)
and green (positive)

**Electron density around UMP B 701:**

$2mF_o-DF_c$ (at 0.7 rmsd) in gray
 mF_o-DF_c (at 3 rmsd) in purple (negative)
and green (positive)





6.5 Other polymers [i](#)

There are no such residues in this entry.