



Full wwPDB X-ray Structure Validation Report ⓘ

Aug 7, 2020 – 11:10 PM BST

PDB ID : 6AOV
Title : Crystal structure of the A/Brisbane/10/2007 (H3N2) influenza virus hemagglutinin in complex with 6'-SLNLN
Authors : Wu, N.C.; Wilson, I.A.
Deposited on : 2017-08-16
Resolution : 1.75 Å(reported)

This is a Full wwPDB X-ray Structure Validation Report for a publicly released PDB entry.

We welcome your comments at validation@mail.wwpdb.org

A user guide is available at

<https://www.wwpdb.org/validation/2017/XrayValidationReportHelp>

with specific help available everywhere you see the ⓘ symbol.

The following versions of software and data (see [references ⓘ](#)) were used in the production of this report:

MolProbity : 4.02b-467
Mogul : 1.8.5 (274361), CSD as541be (2020)
Xtriage (Phenix) : 1.13
EDS : 2.13.1
Percentile statistics : 20191225.v01 (using entries in the PDB archive December 25th 2019)
Refmac : 5.8.0158
CCP4 : 7.0.044 (Gargrove)
Ideal geometry (proteins) : Engh & Huber (2001)
Ideal geometry (DNA, RNA) : Parkinson et al. (1996)
Validation Pipeline (wwPDB-VP) : 2.13.1

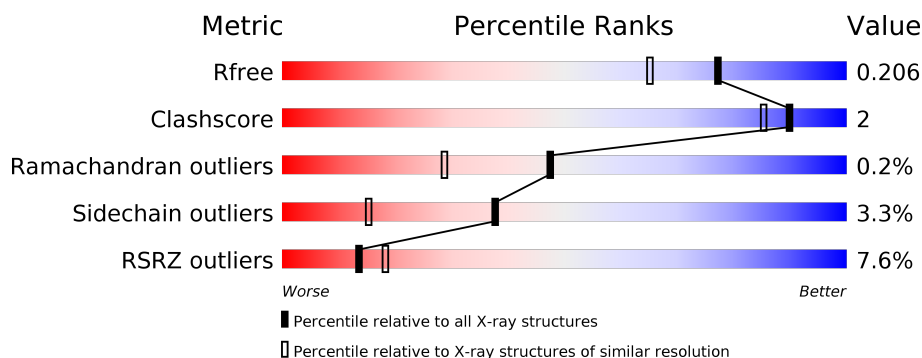
1 Overall quality at a glance

The following experimental techniques were used to determine the structure:

X-RAY DIFFRACTION

The reported resolution of this entry is 1.75 Å.

Percentile scores (ranging between 0-100) for global validation metrics of the entry are shown in the following graphic. The table shows the number of entries on which the scores are based.



Metric	Whole archive (#Entries)	Similar resolution (#Entries, resolution range(Å))
R_{free}	130704	2340 (1.76-1.76)
Clashscore	141614	2466 (1.76-1.76)
Ramachandran outliers	138981	2437 (1.76-1.76)
Sidechain outliers	138945	2437 (1.76-1.76)
RSRZ outliers	127900	2298 (1.76-1.76)

The table below summarises the geometric issues observed across the polymeric chains and their fit to the electron density. The red, orange, yellow and green segments on the lower bar indicate the fraction of residues that contain outliers for ≥ 3 , 2, 1 and 0 types of geometric quality criteria respectively. A grey segment represents the fraction of residues that are not modelled. The numeric value for each fraction is indicated below the corresponding segment, with a dot representing fractions $\leq 5\%$. The upper red bar (where present) indicates the fraction of residues that have poor fit to the electron density. The numeric value is given above the bar.

Mol	Chain	Length	Quality of chain
1	A	323	<div> <div>9%</div> <div> <div></div> <div>91%</div> <div>7%</div> <div></div> </div> </div>
2	B	174	<div> <div>4%</div> <div> <div></div> <div>94%</div> <div>5%</div> <div></div> </div> </div>
3	C	5	<div> <div>60%</div> <div>40%</div> </div>
4	D	3	<div> <div>33%</div> <div>67%</div> </div>
5	E	2	<div> <div>50%</div> <div>50%</div> </div>
6	F	5	<div> <div>40%</div> <div>60%</div> </div>

The following table lists non-polymeric compounds, carbohydrate monomers and non-standard residues in protein, DNA, RNA chains that are outliers for geometric or electron-density-fit criteria:

Mol	Type	Chain	Res	Chirality	Geometry	Clashes	Electron density
3	MAN	C	5	-	-	-	X
6	NAG	F	1	-	-	-	X

2 Entry composition [i](#)

There are 8 unique types of molecules in this entry. The entry contains 4625 atoms, of which 0 are hydrogens and 0 are deuteriums.

In the tables below, the ZeroOcc column contains the number of atoms modelled with zero occupancy, the AltConf column contains the number of residues with at least one atom in alternate conformation and the Trace column contains the number of residues modelled with at most 2 atoms.

- Molecule 1 is a protein called Hemagglutinin HA1 chain.

Mol	Chain	Residues	Atoms					ZeroOcc	AltConf	Trace
			Total	C	N	O	S			
1	A	317	2498	1567	445	474	12	0	5	0

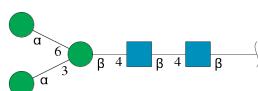
There are 5 discrepancies between the modelled and reference sequences:

Chain	Residue	Modelled	Actual	Comment	Reference
A	7	ALA	-	expression tag	UNP A8W891
A	8	ASN	-	expression tag	UNP A8W891
A	9	PRO	-	expression tag	UNP A8W891
A	10	GLY	-	expression tag	UNP A8W891
A	194	LEU	PRO	variant	UNP A8W891

- Molecule 2 is a protein called Hemagglutinin HA2 chain.

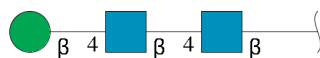
Mol	Chain	Residues	Atoms					ZeroOcc	AltConf	Trace
			Total	C	N	O	S			
2	B	173	1410	883	244	277	6	0	4	0

- Molecule 3 is an oligosaccharide called alpha-D-mannopyranose-(1-3)-[alpha-D-mannopyranose-(1-6)]beta-D-mannopyranose-(1-4)-2-acetamido-2-deoxy-beta-D-glucopyranose-(1-4)-2-acetamido-2-deoxy-beta-D-glucopyranose.



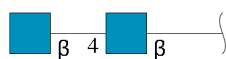
Mol	Chain	Residues	Atoms				ZeroOcc	AltConf	Trace
			Total	C	N	O			
3	C	5	61	34	2	25	0	0	0

- Molecule 4 is an oligosaccharide called beta-D-mannopyranose-(1-4)-2-acetamido-2-deoxy-beta-D-glucopyranose-(1-4)-2-acetamido-2-deoxy-beta-D-glucopyranose.



Mol	Chain	Residues	Atoms				ZeroOcc	AltConf	Trace
4	D	3	Total	C	N	O	0	0	0
			39	22	2	15			

- Molecule 5 is an oligosaccharide called 2-acetamido-2-deoxy-beta-D-glucopyranose-(1-4)-2-acetamido-2-deoxy-beta-D-glucopyranose.



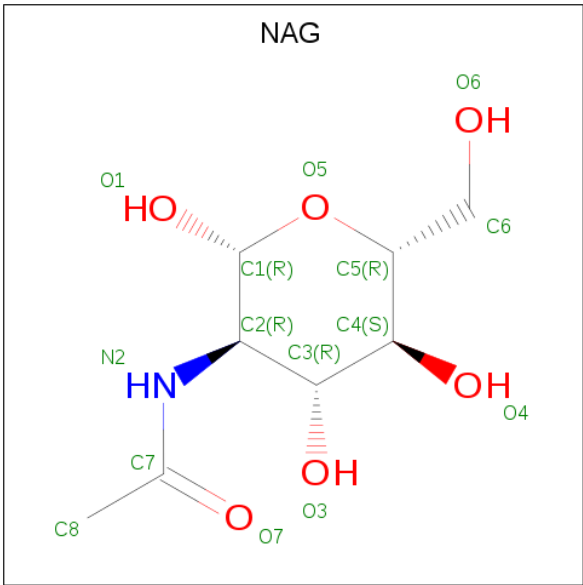
Mol	Chain	Residues	Atoms				ZeroOcc	AltConf	Trace
5	E	2	Total	C	N	O	0	0	0
			28	16	2	10			

- Molecule 6 is an oligosaccharide called N-acetyl-alpha-neuraminic acid-(2-6)-beta-D-galactopyranose-(1-4)-2-acetamido-2-deoxy-beta-D-glucopyranose-(1-3)-beta-D-galactopyranose-(1-4)-2-acetamido-2-deoxy-beta-D-glucopyranose.



Mol	Chain	Residues	Atoms				ZeroOcc	AltConf	Trace
6	F	5	Total	C	N	O	0	0	0
			71	39	3	29			

- Molecule 7 is 2-acetamido-2-deoxy-beta-D-glucopyranose (three-letter code: NAG) (formula: C₈H₁₅NO₆).



Mol	Chain	Residues	Atoms				ZeroOcc	AltConf
7	A	1	Total	C	N	O	0	0
			14	8	1	5		
7	A	1	Total	C	N	O	0	0
			14	8	1	5		
7	A	1	Total	C	N	O	0	0
			14	8	1	5		
7	A	1	Total	C	N	O	0	0
			14	8	1	5		

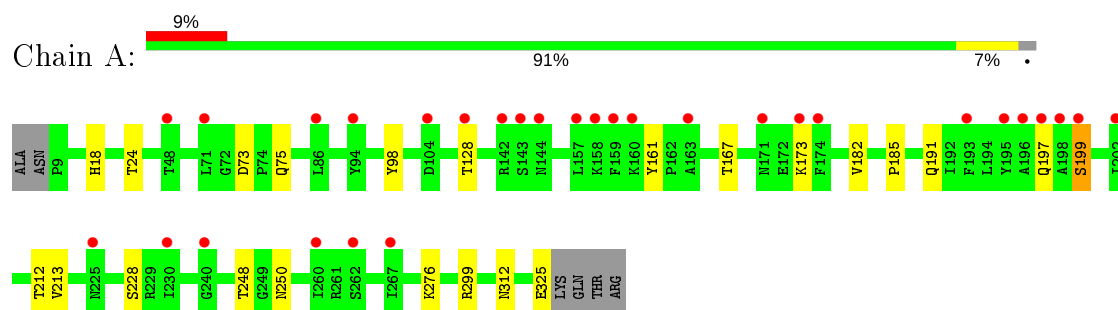
- Molecule 8 is water.

Mol	Chain	Residues	Atoms		ZeroOcc	AltConf
8	A	245	Total	O	0	0
			245	245		
8	B	217	Total	O	0	0
			217	217		

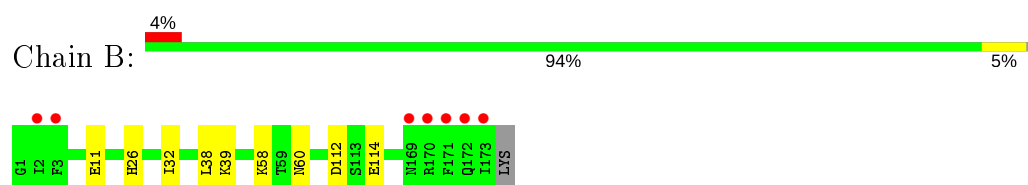
3 Residue-property plots [i](#)

These plots are drawn for all protein, RNA, DNA and oligosaccharide chains in the entry. The first graphic for a chain summarises the proportions of the various outlier classes displayed in the second graphic. The second graphic shows the sequence view annotated by issues in geometry and electron density. Residues are color-coded according to the number of geometric quality criteria for which they contain at least one outlier: green = 0, yellow = 1, orange = 2 and red = 3 or more. A red dot above a residue indicates a poor fit to the electron density ($RSRZ > 2$). Stretches of 2 or more consecutive residues without any outlier are shown as a green connector. Residues present in the sample, but not in the model, are shown in grey.

- Molecule 1: Hemagglutinin HA1 chain



- Molecule 2: Hemagglutinin HA2 chain



- Molecule 3: alpha-D-mannopyranose-(1-3)-[alpha-D-mannopyranose-(1-6)]beta-D-mannopyranose-(1-4)-2-acetamido-2-deoxy-beta-D-glucopyranose-(1-4)-2-acetamido-2-deoxy-beta-D-glucopyranose



- Molecule 4: beta-D-mannopyranose-(1-4)-2-acetamido-2-deoxy-beta-D-glucopyranose-(1-4)-2-acetamido-2-deoxy-beta-D-glucopyranose



- Molecule 5: 2-acetamido-2-deoxy-beta-D-glucopyranose-(1-4)-2-acetamido-2-deoxy-beta-D-glucopyranose

Chain E:  50% 50%

MAG1
MAG2

- Molecule 6: N-acetyl-alpha-neuraminic acid-(2-6)-beta-D-galactopyranose-(1-4)-2-acetamido-2-deoxy-beta-D-glucopyranose-(1-3)-beta-D-galactopyranose-(1-4)-2-acetamido-2-deoxy-beta-D-glucopyranose

Chain F:  40% 60%

MAG1
GAL2
MAG3
GAL4
SIA5

4 Data and refinement statistics

Property	Value	Source
Space group	H 3 2	Depositor
Cell constants a, b, c, α , β , γ	100.72Å 100.72Å 385.07Å 90.00° 90.00° 120.00°	Depositor
Resolution (Å)	50.00 – 1.75 30.31 – 1.75	Depositor EDS
% Data completeness (in resolution range)	99.3 (50.00-1.75) 99.4 (30.31-1.75)	Depositor EDS
R_{merge}	(Not available)	Depositor
R_{sym}	0.09	Depositor
$\langle I/\sigma(I) \rangle$ ¹	1.87 (at 1.75Å)	Xtriage
Refinement program	REFMAC 5.8.0158	Depositor
R, R_{free}	0.174 , 0.196 0.184 , 0.206	Depositor DCC
R_{free} test set	3862 reflections (5.09%)	wwPDB-VP
Wilson B-factor (Å ²)	28.5	Xtriage
Anisotropy	0.021	Xtriage
Bulk solvent k_{sol} (e/Å ³), B_{sol} (Å ²)	0.34 , 48.9	EDS
L-test for twinning ²	$\langle L \rangle = 0.50$, $\langle L^2 \rangle = 0.33$	Xtriage
Estimated twinning fraction	No twinning to report.	Xtriage
F_o, F_c correlation	0.96	EDS
Total number of atoms	4625	wwPDB-VP
Average B, all atoms (Å ²)	40.0	wwPDB-VP

Xtriage's analysis on translational NCS is as follows: *The largest off-origin peak in the Patterson function is 4.68% of the height of the origin peak. No significant pseudotranslation is detected.*

¹Intensities estimated from amplitudes.

²Theoretical values of $\langle |L| \rangle$, $\langle L^2 \rangle$ for acentric reflections are 0.5, 0.333 respectively for untwinned datasets, and 0.375, 0.2 for perfectly twinned datasets.

5 Model quality

5.1 Standard geometry

Bond lengths and bond angles in the following residue types are not validated in this section: GAL, SIA, BMA, NAG, MAN

The Z score for a bond length (or angle) is the number of standard deviations the observed value is removed from the expected value. A bond length (or angle) with $|Z| > 5$ is considered an outlier worth inspection. RMSZ is the root-mean-square of all Z scores of the bond lengths (or angles).

Mol	Chain	Bond lengths		Bond angles	
		RMSZ	$\# Z > 5$	RMSZ	$\# Z > 5$
1	A	0.54	0/2570	0.72	0/3494
2	B	0.65	0/1446	0.75	0/1943
All	All	0.58	0/4016	0.73	0/5437

There are no bond length outliers.

There are no bond angle outliers.

There are no chirality outliers.

There are no planarity outliers.

5.2 Too-close contacts

In the following table, the Non-H and H(model) columns list the number of non-hydrogen atoms and hydrogen atoms in the chain respectively. The H(added) column lists the number of hydrogen atoms added and optimized by MolProbity. The Clashes column lists the number of clashes within the asymmetric unit, whereas Symm-Clashes lists symmetry related clashes.

Mol	Chain	Non-H	H(model)	H(added)	Clashes	Symm-Clashes
1	A	2498	0	2463	12	0
2	B	1410	0	1357	3	0
3	C	61	0	52	0	0
4	D	39	0	34	0	0
5	E	28	0	25	0	0
6	F	71	0	61	0	0
7	A	56	0	52	2	0
8	A	245	0	0	1	0
8	B	217	0	0	2	1
All	All	4625	0	4044	15	1

The all-atom clashscore is defined as the number of clashes found per 1000 atoms (including

hydrogen atoms). The all-atom clashscore for this structure is 2.

All (15) close contacts within the same asymmetric unit are listed below, sorted by their clash magnitude.

Atom-1	Atom-2	Interatomic distance (Å)	Clash overlap (Å)
1:A:191:GLN:HE22	1:A:250:ASN:HD21	1.22	0.85
1:A:299[B]:ARG:NH1	8:A:501:HOH:O	2.17	0.77
2:B:114:GLU:OE1	8:B:201:HOH:O	2.06	0.73
1:A:185:PRO:HG2	1:A:191:GLN:HE21	1.63	0.64
1:A:24:THR:OG1	7:A:401:NAG:H81	1.99	0.62
1:A:98:TYR:HH	1:A:228[A]:SER:HB2	1.65	0.59
2:B:112:ASP:HB2	8:B:262:HOH:O	2.03	0.57
1:A:73:ASP:OD1	1:A:75:GLN:HG2	2.08	0.53
1:A:182:VAL:HG21	1:A:213:VAL:CG1	2.42	0.50
1:A:299[B]:ARG:HH11	1:A:299[B]:ARG:HG2	1.81	0.46
1:A:248:THR:HG23	7:A:414:NAG:O7	2.17	0.45
2:B:26:HIS:O	2:B:32:ILE:HA	2.18	0.43
1:A:191:GLN:HE22	1:A:250:ASN:ND2	2.04	0.42
1:A:185:PRO:HG2	1:A:191:GLN:NE2	2.33	0.40
1:A:161:TYR:HB3	1:A:197:GLN:OE1	2.22	0.40

All (1) symmetry-related close contacts are listed below. The label for Atom-2 includes the symmetry operator and encoded unit-cell translations to be applied.

Atom-1	Atom-2	Interatomic distance (Å)	Clash overlap (Å)
8:B:379:HOH:O	8:B:379:HOH:O[5_555]	1.50	0.70

5.3 Torsion angles [i](#)

5.3.1 Protein backbone [i](#)

In the following table, the Percentiles column shows the percent Ramachandran outliers of the chain as a percentile score with respect to all X-ray entries followed by that with respect to entries of similar resolution.

The Analysed column shows the number of residues for which the backbone conformation was analysed, and the total number of residues.

Mol	Chain	Analysed	Favoured	Allowed	Outliers	Percentiles
1	A	320/323 (99%)	307 (96%)	12 (4%)	1 (0%)	41 22
2	B	175/174 (101%)	168 (96%)	7 (4%)	0	100 100

Continued on next page...

Continued from previous page...

Mol	Chain	Analysed	Favoured	Allowed	Outliers	Percentiles
All	All	495/497 (100%)	475 (96%)	19 (4%)	1 (0%)	47 29

All (1) Ramachandran outliers are listed below:

Mol	Chain	Res	Type
1	A	199	SER

5.3.2 Protein sidechains ⓘ

In the following table, the Percentiles column shows the percent sidechain outliers of the chain as a percentile score with respect to all X-ray entries followed by that with respect to entries of similar resolution.

The Analysed column shows the number of residues for which the sidechain conformation was analysed, and the total number of residues.

Mol	Chain	Analysed	Rotameric	Outliers	Percentiles
1	A	285/285 (100%)	276 (97%)	9 (3%)	39 16
2	B	150/147 (102%)	145 (97%)	5 (3%)	38 15
All	All	435/432 (101%)	421 (97%)	14 (3%)	38 16

All (14) residues with a non-rotameric sidechain are listed below:

Mol	Chain	Res	Type
1	A	18	HIS
1	A	128	THR
1	A	167	THR
1	A	173	LYS
1	A	199	SER
1	A	212	THR
1	A	276	LYS
1	A	312	ASN
1	A	325	GLU
2	B	11	GLU
2	B	38	LEU
2	B	39	LYS
2	B	58	LYS
2	B	60	ASN

Some sidechains can be flipped to improve hydrogen bonding and reduce clashes. All (3) such sidechains are listed below:

Mol	Chain	Res	Type
1	A	75	GLN
1	A	191	GLN
1	A	312	ASN

5.3.3 RNA ⓘ

There are no RNA molecules in this entry.

5.4 Non-standard residues in protein, DNA, RNA chains ⓘ

There are no non-standard protein/DNA/RNA residues in this entry.

5.5 Carbohydrates ⓘ

15 monosaccharides are modelled in this entry.

In the following table, the Counts columns list the number of bonds (or angles) for which Mogul statistics could be retrieved, the number of bonds (or angles) that are observed in the model and the number of bonds (or angles) that are defined in the Chemical Component Dictionary. The Link column lists molecule types, if any, to which the group is linked. The Z score for a bond length (or angle) is the number of standard deviations the observed value is removed from the expected value. A bond length (or angle) with $|Z| > 2$ is considered an outlier worth inspection. RMSZ is the root-mean-square of all Z scores of the bond lengths (or angles).

Mol	Type	Chain	Res	Link	Bond lengths			Bond angles		
					Counts	RMSZ	$\# Z > 2$	Counts	RMSZ	$\# Z > 2$
3	NAG	C	1	1,3	14,14,15	0.45	0	17,19,21	0.93	0
3	NAG	C	2	3	14,14,15	0.40	0	17,19,21	0.73	0
3	BMA	C	3	3	11,11,12	0.40	0	15,15,17	0.80	0
3	MAN	C	4	3	11,11,12	0.53	0	15,15,17	1.60	3 (20%)
3	MAN	C	5	3	11,11,12	0.55	0	15,15,17	1.64	2 (13%)
4	NAG	D	1	1,4	14,14,15	0.36	0	17,19,21	1.12	1 (5%)
4	NAG	D	2	4	14,14,15	0.30	0	17,19,21	0.79	0
4	BMA	D	3	4	11,11,12	0.51	0	15,15,17	1.09	1 (6%)
5	NAG	E	1	1,5	14,14,15	0.71	0	17,19,21	1.46	3 (17%)
5	NAG	E	2	5	14,14,15	0.43	0	17,19,21	0.91	0
6	NAG	F	1	6	15,15,15	0.49	0	21,21,21	1.23	3 (14%)
6	GAL	F	2	6	11,11,12	0.34	0	15,15,17	0.95	0
6	NAG	F	3	6	14,14,15	0.52	0	17,19,21	0.78	0
6	GAL	F	4	6	11,11,12	0.32	0	15,15,17	0.77	1 (6%)
6	SIA	F	5	6	17,20,21	0.29	0	21,28,31	0.81	1 (4%)

In the following table, the Chirals column lists the number of chiral outliers, the number of chiral centers analysed, the number of these observed in the model and the number defined in the Chemical Component Dictionary. Similar counts are reported in the Torsion and Rings columns. '-' means no outliers of that kind were identified.

Mol	Type	Chain	Res	Link	Chirals	Torsions	Rings
3	NAG	C	1	1,3	-	0/6/23/26	0/1/1/1
3	NAG	C	2	3	-	0/6/23/26	0/1/1/1
3	BMA	C	3	3	-	2/2/19/22	0/1/1/1
3	MAN	C	4	3	-	1/2/19/22	0/1/1/1
3	MAN	C	5	3	-	2/2/19/22	0/1/1/1
4	NAG	D	1	1,4	-	0/6/23/26	0/1/1/1
4	NAG	D	2	4	-	0/6/23/26	0/1/1/1
4	BMA	D	3	4	-	0/2/19/22	0/1/1/1
5	NAG	E	1	1,5	-	2/6/23/26	0/1/1/1
5	NAG	E	2	5	-	0/6/23/26	0/1/1/1
6	NAG	F	1	6	-	0/6/26/26	0/1/1/1
6	GAL	F	2	6	-	1/2/19/22	0/1/1/1
6	NAG	F	3	6	-	0/6/23/26	0/1/1/1
6	GAL	F	4	6	-	1/2/19/22	0/1/1/1
6	SIA	F	5	6	-	0/14/34/38	0/1/1/1

There are no bond length outliers.

All (15) bond angle outliers are listed below:

Mol	Chain	Res	Type	Atoms	Z	Observed(°)	Ideal(°)
3	C	5	MAN	C1-O5-C5	5.45	119.57	112.19
5	E	1	NAG	C1-O5-C5	3.86	117.42	112.19
6	F	1	NAG	C4-C3-C2	3.42	115.36	110.34
3	C	4	MAN	C2-C3-C4	3.36	116.71	110.89
3	C	4	MAN	C3-C4-C5	3.33	116.17	110.24
4	D	3	BMA	C1-C2-C3	2.87	113.19	109.67
3	C	4	MAN	C1-O5-C5	2.71	115.86	112.19
6	F	5	SIA	C6-O6-C2	2.58	116.86	111.34
6	F	4	GAL	O5-C5-C6	2.58	111.24	107.20
6	F	1	NAG	C1-C2-C3	2.26	113.63	110.54
6	F	1	NAG	C1-C2-N2	-2.23	108.14	110.73
3	C	5	MAN	O5-C5-C6	2.21	110.66	107.20
4	D	1	NAG	C1-C2-N2	2.13	114.13	110.49
5	E	1	NAG	C1-C2-N2	2.12	114.10	110.49
5	E	1	NAG	O5-C5-C6	-2.03	104.03	107.20

There are no chirality outliers.

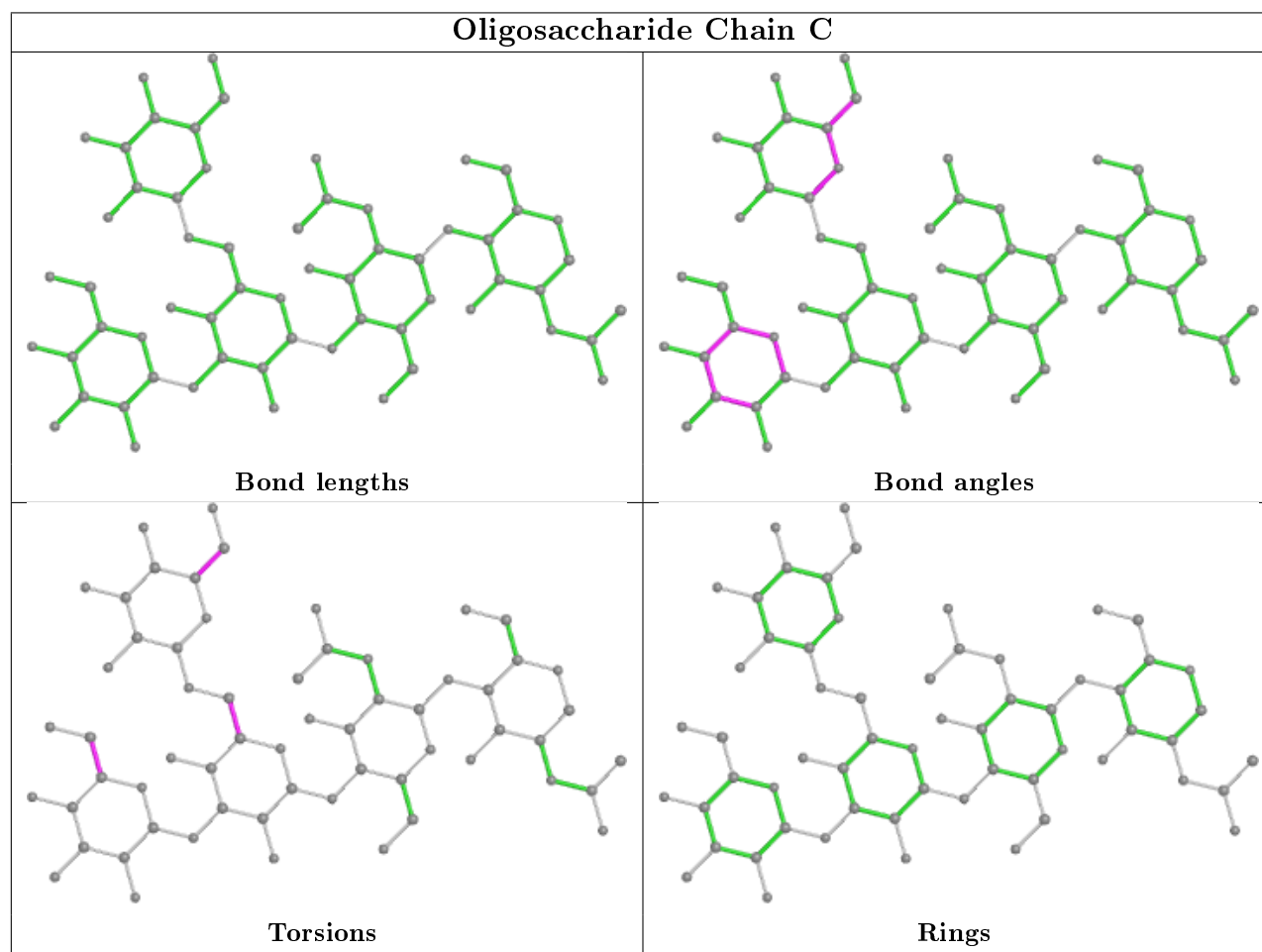
All (9) torsion outliers are listed below:

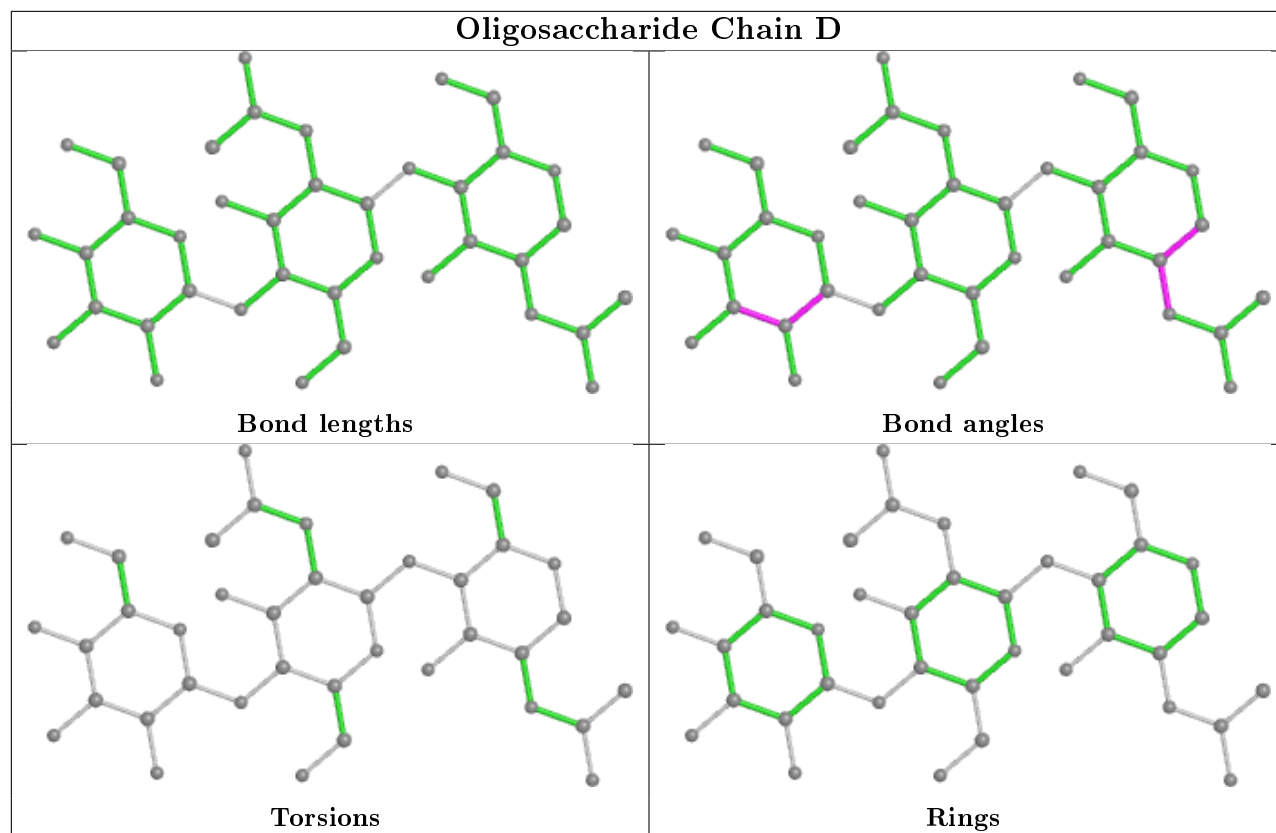
Mol	Chain	Res	Type	Atoms
3	C	5	MAN	O5-C5-C6-O6
5	E	1	NAG	O5-C5-C6-O6
3	C	5	MAN	C4-C5-C6-O6
3	C	3	BMA	C4-C5-C6-O6
3	C	3	BMA	O5-C5-C6-O6
5	E	1	NAG	C4-C5-C6-O6
6	F	4	GAL	O5-C5-C6-O6
3	C	4	MAN	O5-C5-C6-O6
6	F	2	GAL	C4-C5-C6-O6

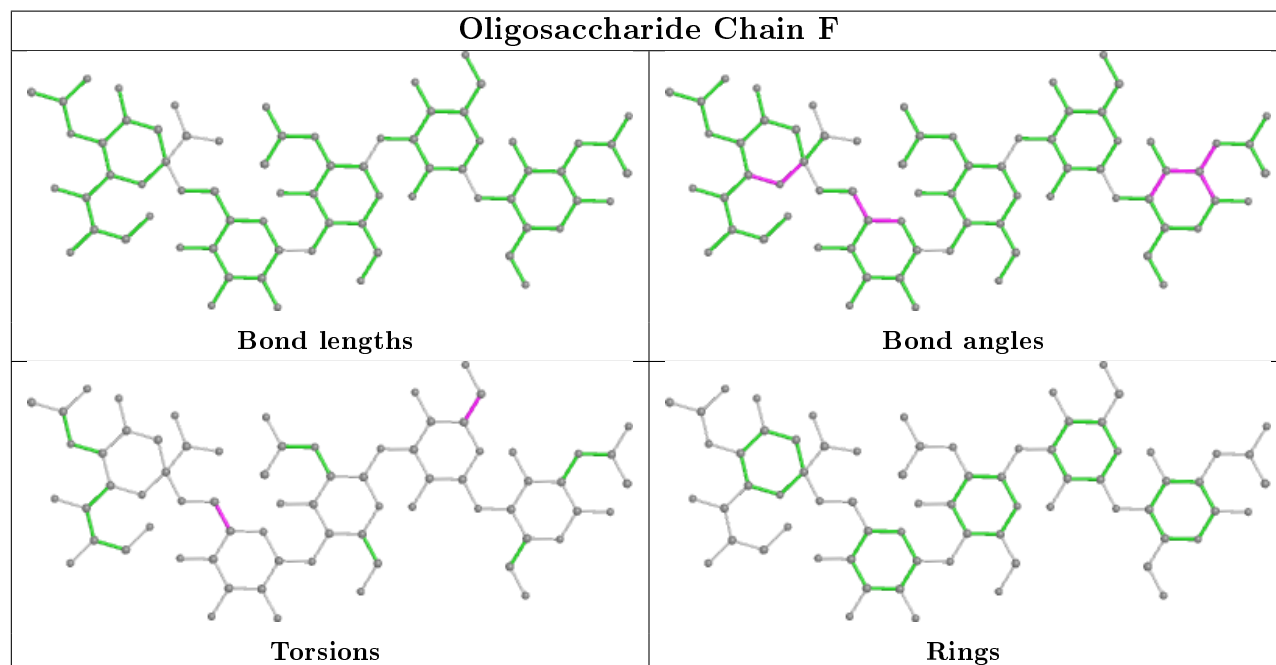
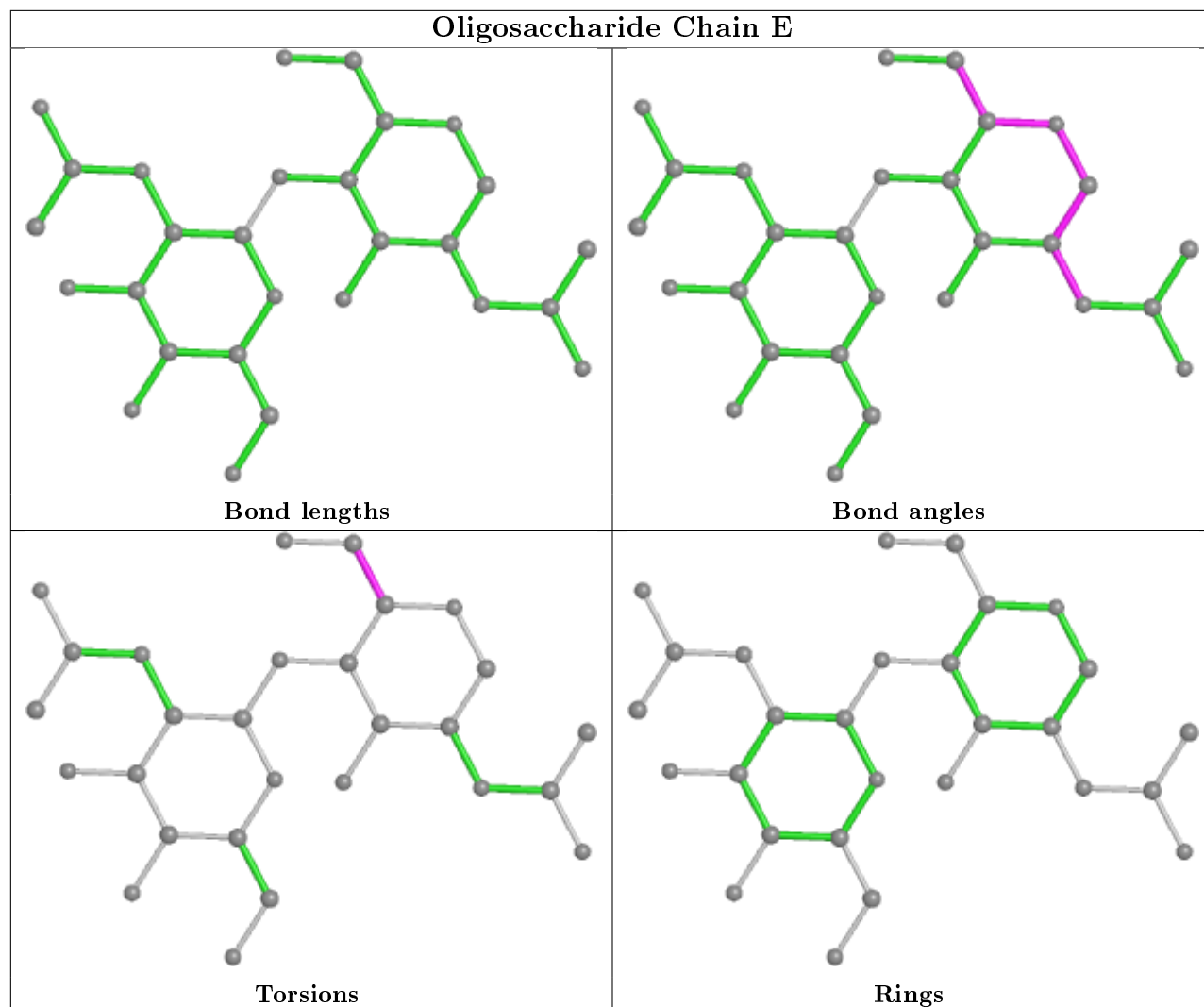
There are no ring outliers.

No monomer is involved in short contacts.

The following is a two-dimensional graphical depiction of Mogul quality analysis of bond lengths, bond angles, torsion angles, and ring geometry for oligosaccharide.







5.6 Ligand geometry

4 ligands are modelled in this entry.

In the following table, the Counts columns list the number of bonds (or angles) for which Mogul statistics could be retrieved, the number of bonds (or angles) that are observed in the model and the number of bonds (or angles) that are defined in the Chemical Component Dictionary. The Link column lists molecule types, if any, to which the group is linked. The Z score for a bond length (or angle) is the number of standard deviations the observed value is removed from the expected value. A bond length (or angle) with $|Z| > 2$ is considered an outlier worth inspection. RMSZ is the root-mean-square of all Z scores of the bond lengths (or angles).

Mol	Type	Chain	Res	Link	Bond lengths			Bond angles		
					Counts	RMSZ	# Z > 2	Counts	RMSZ	# Z > 2
7	NAG	A	413	1	14,14,15	0.57	0	17,19,21	1.04	1 (5%)
7	NAG	A	401	1	14,14,15	0.40	0	17,19,21	0.97	1 (5%)
7	NAG	A	407	1	14,14,15	0.28	0	17,19,21	0.86	1 (5%)
7	NAG	A	414	1	14,14,15	0.36	0	17,19,21	0.96	1 (5%)

In the following table, the Chirals column lists the number of chiral outliers, the number of chiral centers analysed, the number of these observed in the model and the number defined in the Chemical Component Dictionary. Similar counts are reported in the Torsion and Rings columns. '-' means no outliers of that kind were identified.

Mol	Type	Chain	Res	Link	Chirals	Torsions	Rings
7	NAG	A	413	1	-	0/6/23/26	0/1/1/1
7	NAG	A	401	1	-	1/6/23/26	0/1/1/1
7	NAG	A	407	1	-	1/6/23/26	0/1/1/1
7	NAG	A	414	1	-	0/6/23/26	0/1/1/1

There are no bond length outliers.

All (4) bond angle outliers are listed below:

Mol	Chain	Res	Type	Atoms	Z	Observed(°)	Ideal(°)
7	A	414	NAG	O5-C1-C2	-2.64	107.11	111.29
7	A	401	NAG	C1-O5-C5	2.58	115.69	112.19
7	A	407	NAG	C1-O5-C5	2.17	115.13	112.19
7	A	413	NAG	C1-C2-N2	2.04	113.97	110.49

There are no chirality outliers.

All (2) torsion outliers are listed below:

Mol	Chain	Res	Type	Atoms
7	A	407	NAG	O5-C5-C6-O6
7	A	401	NAG	C4-C5-C6-O6

There are no ring outliers.

2 monomers are involved in 2 short contacts:

Mol	Chain	Res	Type	Clashes	Symm-Clashes
7	A	401	NAG	1	0
7	A	414	NAG	1	0

5.7 Other polymers [i](#)

There are no such residues in this entry.

5.8 Polymer linkage issues [i](#)

There are no chain breaks in this entry.

6 Fit of model and data

6.1 Protein, DNA and RNA chains

In the following table, the column labelled ‘#RSRZ> 2’ contains the number (and percentage) of RSRZ outliers, followed by percent RSRZ outliers for the chain as percentile scores relative to all X-ray entries and entries of similar resolution. The OWAB column contains the minimum, median, 95th percentile and maximum values of the occupancy-weighted average B-factor per residue. The column labelled ‘Q< 0.9’ lists the number of (and percentage) of residues with an average occupancy less than 0.9.

Mol	Chain	Analysed	<RSRZ>	#RSRZ>2	OWAB(Å ²)	Q<0.9
1	A	317/323 (98%)	0.45	30 (9%) 8 11	20, 41, 71, 86	0
2	B	173/174 (99%)	0.07	7 (4%) 38 45	18, 27, 44, 100	0
All	All	490/497 (98%)	0.32	37 (7%) 13 18	18, 34, 67, 100	0

All (37) RSRZ outliers are listed below:

Mol	Chain	Res	Type	RSRZ
1	A	142	ARG	5.6
1	A	173	LYS	5.1
1	A	144	ASN	4.5
1	A	196	ALA	4.5
1	A	143	SER	4.2
2	B	170	ARG	3.5
1	A	262	SER	3.5
1	A	193	PHE	3.4
1	A	230	ILE	3.3
1	A	199	SER	3.3
1	A	202	ILE	3.2
1	A	174	PHE	3.1
2	B	173	ILE	3.0
1	A	160	LYS	2.9
1	A	159	PHE	2.9
2	B	171	PHE	2.9
2	B	3	PHE	2.9
1	A	260	ILE	2.9
1	A	94	TYR	2.7
1	A	86	LEU	2.7
1	A	104	ASP	2.6
1	A	225	ASN	2.6
1	A	158	LYS	2.5
1	A	128	THR	2.5

Continued on next page...

Continued from previous page...

Mol	Chain	Res	Type	RSRZ
1	A	198	ALA	2.4
1	A	240	GLY	2.4
1	A	71	LEU	2.3
2	B	2	ILE	2.3
2	B	169	ASN	2.3
1	A	48	THR	2.2
1	A	267	ILE	2.2
2	B	172	GLN	2.1
1	A	157	LEU	2.1
1	A	197	GLN	2.1
1	A	195	TYR	2.1
1	A	163	ALA	2.1
1	A	171	ASN	2.0

6.2 Non-standard residues in protein, DNA, RNA chains ⓘ

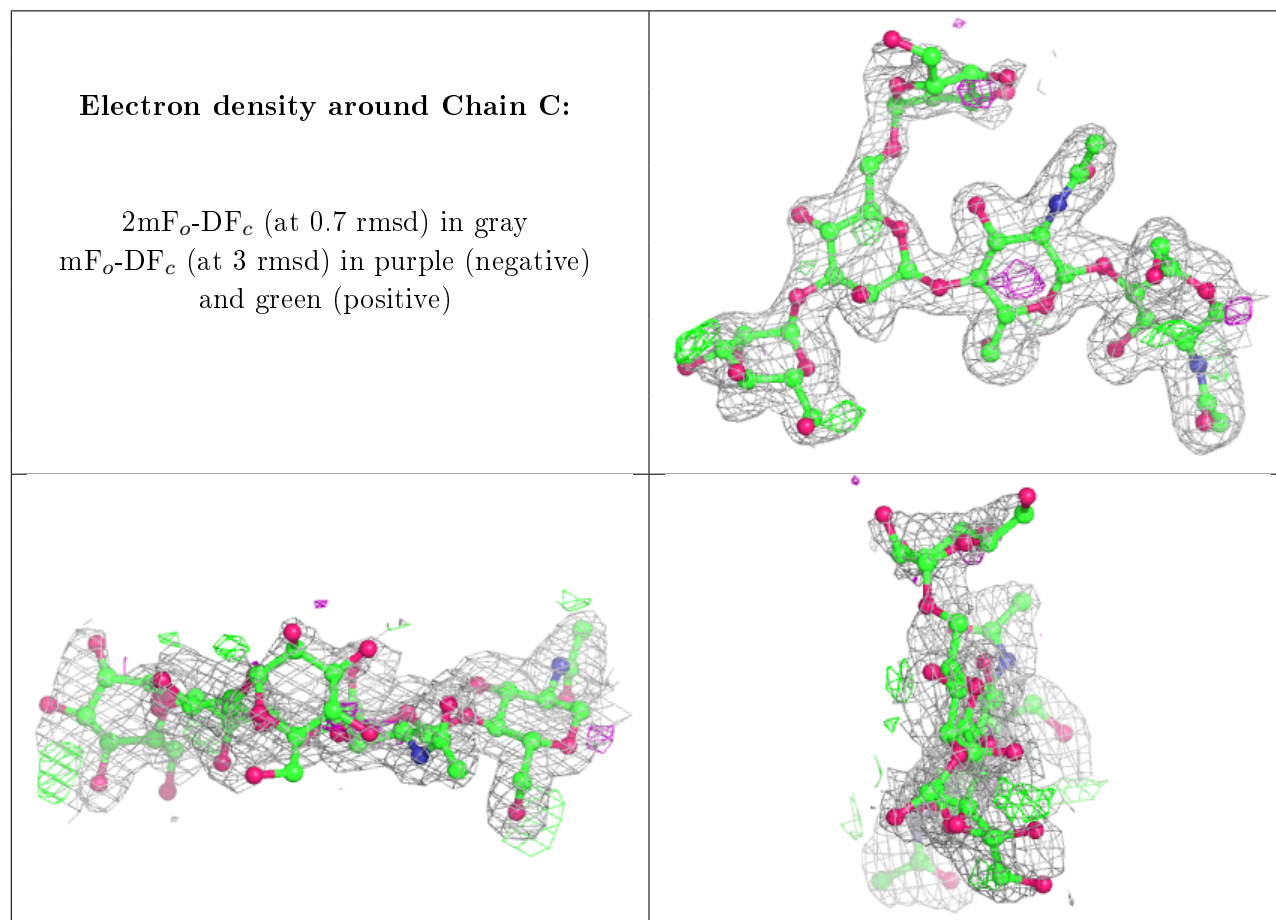
There are no non-standard protein/DNA/RNA residues in this entry.

6.3 Carbohydrates ⓘ

In the following table, the Atoms column lists the number of modelled atoms in the group and the number defined in the chemical component dictionary. The B-factors column lists the minimum, median, 95th percentile and maximum values of B factors of atoms in the group. The column labelled 'Q< 0.9' lists the number of atoms with occupancy less than 0.9.

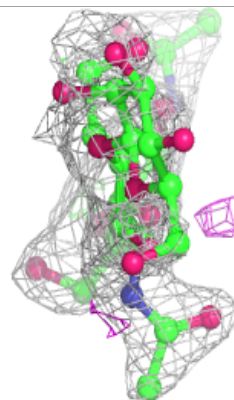
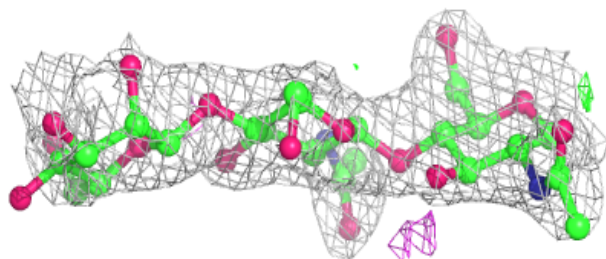
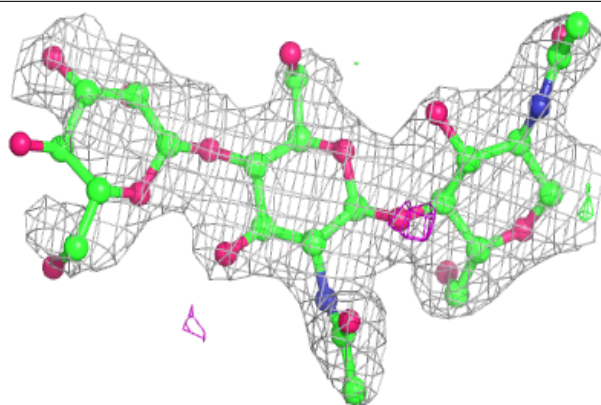
Mol	Type	Chain	Res	Atoms	RSCC	RSR	B-factors(Å ²)	Q<0.9
4	BMA	D	3	11/12	0.68	0.34	82,88,93,94	0
3	MAN	C	5	11/12	0.71	0.48	77,81,83,84	0
6	NAG	F	1	15/15	0.72	0.43	93,99,103,105	0
3	MAN	C	4	11/12	0.73	0.23	73,77,80,82	0
6	GAL	F	4	11/12	0.80	0.18	58,66,67,69	0
5	NAG	E	2	14/15	0.82	0.47	72,81,85,86	0
6	GAL	F	2	11/12	0.83	0.34	77,86,89,93	0
3	BMA	C	3	11/12	0.84	0.30	62,69,74,79	0
6	SIA	F	5	20/21	0.86	0.12	56,58,64,64	0
3	NAG	C	2	14/15	0.86	0.22	40,42,50,54	0
6	NAG	F	3	14/15	0.87	0.27	64,66,69,72	0
5	NAG	E	1	14/15	0.88	0.17	39,48,56,63	0
4	NAG	D	2	14/15	0.89	0.21	61,63,68,75	0
4	NAG	D	1	14/15	0.91	0.12	48,54,60,61	0
3	NAG	C	1	14/15	0.95	0.11	27,32,38,39	0

The following is a graphical depiction of the model fit to experimental electron density for oligosaccharide. Each fit is shown from different orientation to approximate a three-dimensional view.

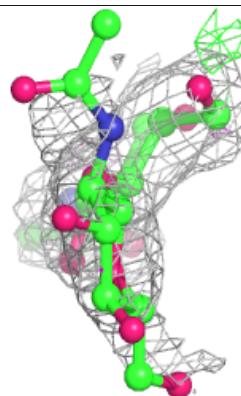
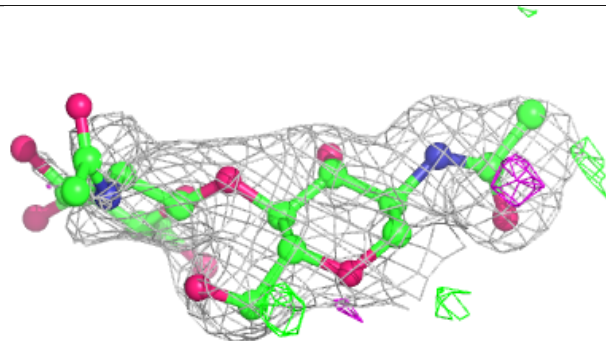
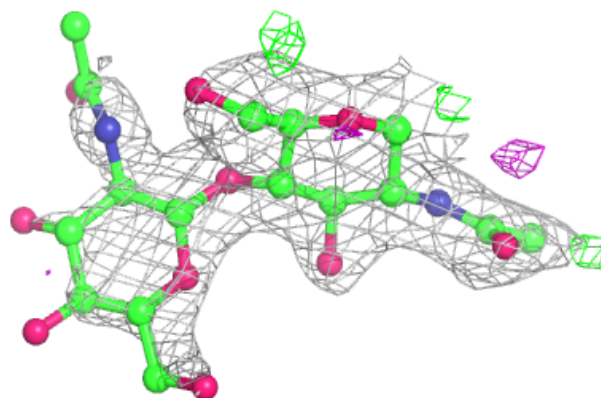


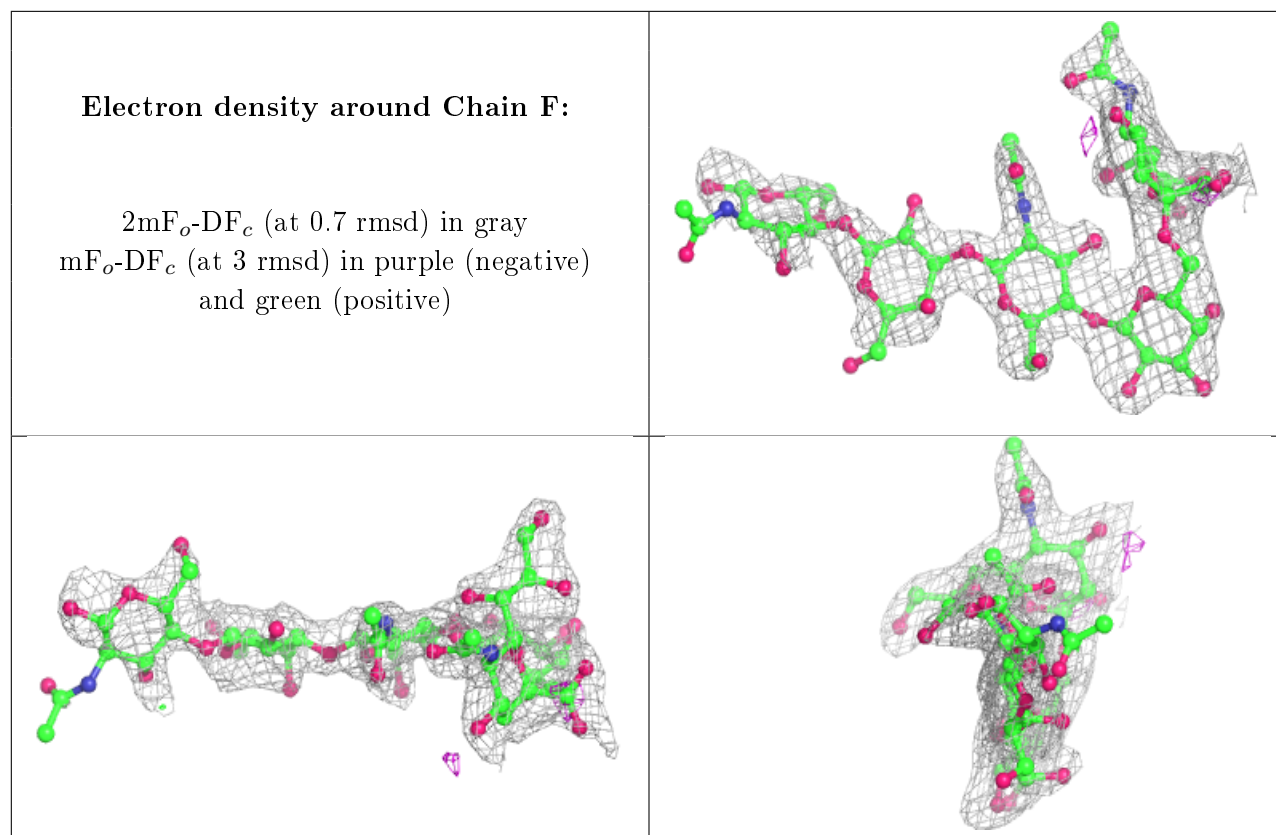
Electron density around Chain D:

$2mF_o-DF_c$ (at 0.7 rmsd) in gray
 mF_o-DF_c (at 3 rmsd) in purple (negative)
and green (positive)

**Electron density around Chain E:**

$2mF_o-DF_c$ (at 0.7 rmsd) in gray
 mF_o-DF_c (at 3 rmsd) in purple (negative)
and green (positive)





6.4 Ligands [i](#)

In the following table, the Atoms column lists the number of modelled atoms in the group and the number defined in the chemical component dictionary. The B-factors column lists the minimum, median, 95th percentile and maximum values of B factors of atoms in the group. The column labelled 'Q< 0.9' lists the number of atoms with occupancy less than 0.9.

Mol	Type	Chain	Res	Atoms	RSCC	RSR	B-factors(Å ²)	Q<0.9
7	NAG	A	401	14/15	0.72	0.40	52,57,64,66	0
7	NAG	A	407	14/15	0.81	0.41	62,74,78,81	0
7	NAG	A	414	14/15	0.83	0.25	57,64,67,69	0
7	NAG	A	413	14/15	0.90	0.19	52,63,68,69	0

6.5 Other polymers [i](#)

There are no such residues in this entry.