



Full wwPDB X-ray Structure Validation Report ⓘ

Jun 14, 2020 – 08:34 am BST

PDB ID : 2AQB
Title : Structure-activity relationships at the 5-position of thiolactomycin: an intact 5(R)-isoprene unit is required for activity against the condensing enzymes from Mycobacterium tuberculosis and Escherchia coli
Authors : Kim, P.; Zhang, Y.M.; Shenoy, G.; Nguyen, Q.A.; Boshoff, H.I.; Manjunatha, U.H.; Goodwin, M.B.; Lonsdale, J.; Price, A.C.; Miller, D.J.
Deposited on : 2005-08-17
Resolution : 2.19 Å(reported)

This is a Full wwPDB X-ray Structure Validation Report for a publicly released PDB entry.

We welcome your comments at validation@mail.wwpdb.org

A user guide is available at

<https://www.wwpdb.org/validation/2017/XrayValidationReportHelp>

with specific help available everywhere you see the ⓘ symbol.

The following versions of software and data (see [references ⓘ](#)) were used in the production of this report:

MolProbity : 4.02b-467
Mogul : 1.8.5 (274361), CSD as541be (2020)
Xtriage (Phenix) : 1.13
EDS : 2.11
Percentile statistics : 20191225.v01 (using entries in the PDB archive December 25th 2019)
Refmac : 5.8.0158
CCP4 : 7.0.044 (Gargrove)
Ideal geometry (proteins) : Engh & Huber (2001)
Ideal geometry (DNA, RNA) : Parkinson et al. (1996)
Validation Pipeline (wwPDB-VP) : 2.11

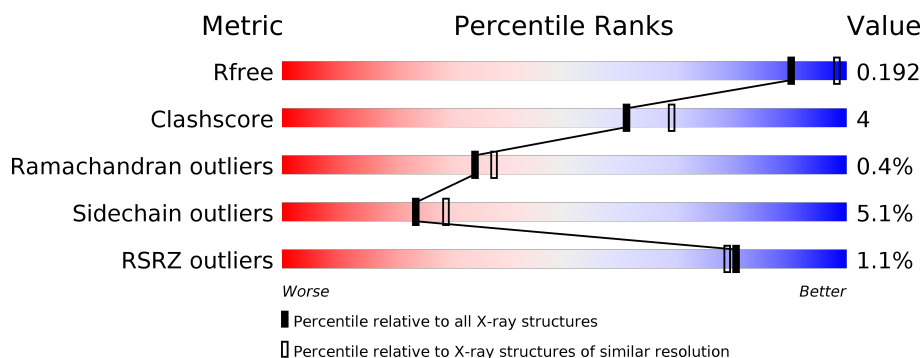
1 Overall quality at a glance

The following experimental techniques were used to determine the structure:

X-RAY DIFFRACTION

The reported resolution of this entry is 2.19 Å.

Percentile scores (ranging between 0-100) for global validation metrics of the entry are shown in the following graphic. The table shows the number of entries on which the scores are based.



Metric	Whole archive (#Entries)	Similar resolution (#Entries, resolution range(Å))
R_{free}	130704	4898 (2.20-2.20)
Clashscore	141614	5594 (2.20-2.20)
Ramachandran outliers	138981	5503 (2.20-2.20)
Sidechain outliers	138945	5504 (2.20-2.20)
RSRZ outliers	127900	4800 (2.20-2.20)

The table below summarises the geometric issues observed across the polymeric chains and their fit to the electron density. The red, orange, yellow and green segments on the lower bar indicate the fraction of residues that contain outliers for ≥ 3 , 2, 1 and 0 types of geometric quality criteria respectively. A grey segment represents the fraction of residues that are not modelled. The numeric value for each fraction is indicated below the corresponding segment, with a dot representing fractions $\leq 5\%$. The upper red bar (where present) indicates the fraction of residues that have poor fit to the electron density. The numeric value is given above the bar.

Mol	Chain	Length	Quality of chain
1	A	406	<div> <div>2%</div> <div> <div></div> <div>88%</div> <div>11%</div> <div>.</div> </div> </div>
1	B	406	<div> <div></div> <div> <div>87%</div> <div>11%</div> <div>..</div> </div> </div>
1	C	406	<div> <div>2%</div> <div> <div></div> <div>88%</div> <div>10%</div> <div>..</div> </div> </div>
1	D	406	<div> <div></div> <div> <div>86%</div> <div>12%</div> <div>..</div> </div> </div>

The following table lists non-polymeric compounds, carbohydrate monomers and non-standard residues in protein, DNA, RNA chains that are outliers for geometric or electron-density-fit crite-

ria:

Mol	Type	Chain	Res	Chirality	Geometry	Clashes	Electron density
2	TL6	A	600	-	-	-	X
2	TL6	D	602	-	-	-	X

2 Entry composition [i](#)

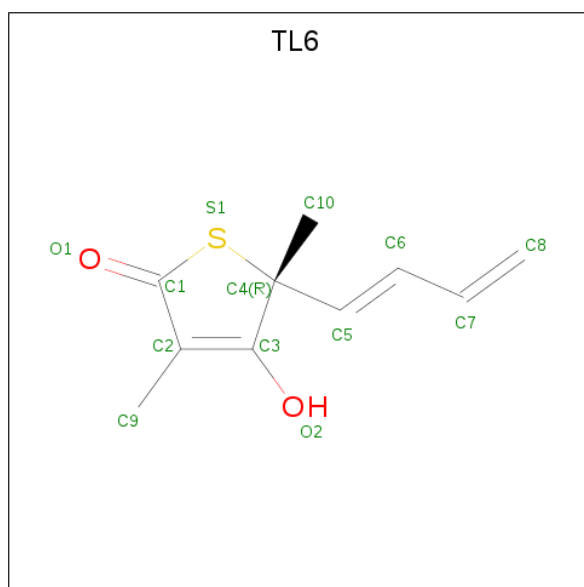
There are 3 unique types of molecules in this entry. The entry contains 12401 atoms, of which 0 are hydrogens and 0 are deuteriums.

In the tables below, the ZeroOcc column contains the number of atoms modelled with zero occupancy, the AltConf column contains the number of residues with at least one atom in alternate conformation and the Trace column contains the number of residues modelled with at most 2 atoms.

- Molecule 1 is a protein called 3-oxoacyl-[acyl-carrier-protein] synthase I.

Mol	Chain	Residues	Atoms					ZeroOcc	AltConf	Trace
1	A	404	Total	C	N	O	S	0	0	0
			2960	1841	516	581	22			
1	B	403	Total	C	N	O	S	0	0	0
			2955	1838	515	580	22			
1	C	403	Total	C	N	O	S	0	0	0
			2955	1838	515	580	22			
1	D	403	Total	C	N	O	S	0	0	0
			2955	1838	515	580	22			

- Molecule 2 is (5R)-5-[(1E)-BUTA-1,3-DIENYL]-4-HYDROXY-3,5-DIMETHYLTHIOPHE N-2(5H)-ONE (three-letter code: TL6) (formula: C₁₀H₁₂O₂S).



Mol	Chain	Residues	Atoms				ZeroOcc	AltConf
2	A	1	Total	C	O	S	0	0
			13	10	2	1		
2	B	1	Total	C	O	S	0	0
			13	10	2	1		

Continued on next page...

Continued from previous page...

Mol	Chain	Residues	Atoms				ZeroOcc	AltConf
2	D	1	Total	C	O	S	0	0
			13	10	2	1		

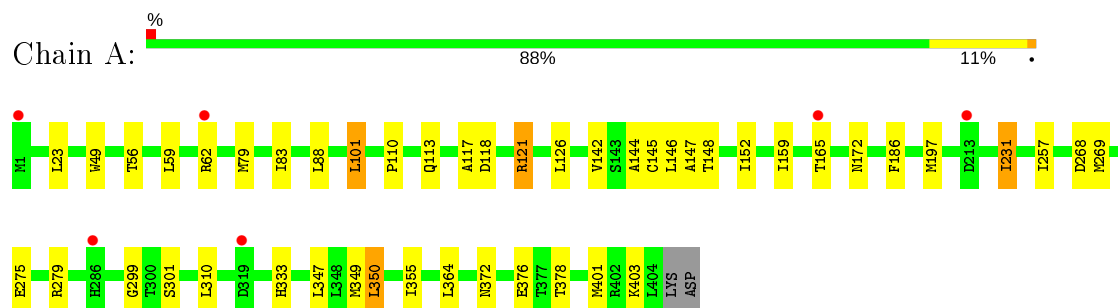
- Molecule 3 is water.

Mol	Chain	Residues	Atoms		ZeroOcc	AltConf
3	A	126	Total	O	0	0
			126	126		
3	B	141	Total	O	0	0
			141	141		
3	C	126	Total	O	0	0
			126	126		
3	D	144	Total	O	0	0
			144	144		

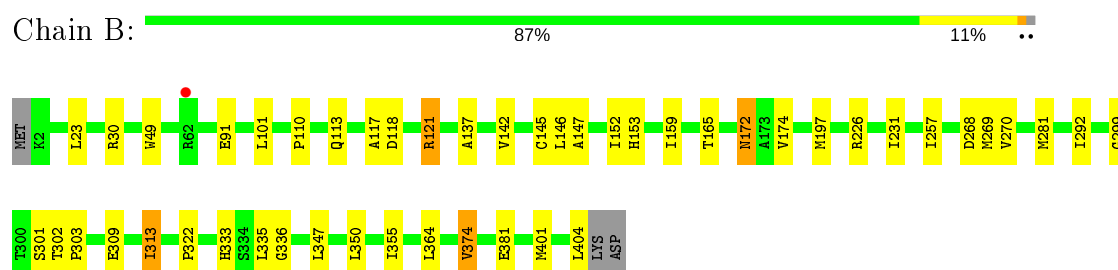
3 Residue-property plots [i](#)

These plots are drawn for all protein, RNA and DNA chains in the entry. The first graphic for a chain summarises the proportions of the various outlier classes displayed in the second graphic. The second graphic shows the sequence view annotated by issues in geometry and electron density. Residues are color-coded according to the number of geometric quality criteria for which they contain at least one outlier: green = 0, yellow = 1, orange = 2 and red = 3 or more. A red dot above a residue indicates a poor fit to the electron density ($RSRZ > 2$). Stretches of 2 or more consecutive residues without any outlier are shown as a green connector. Residues present in the sample, but not in the model, are shown in grey.

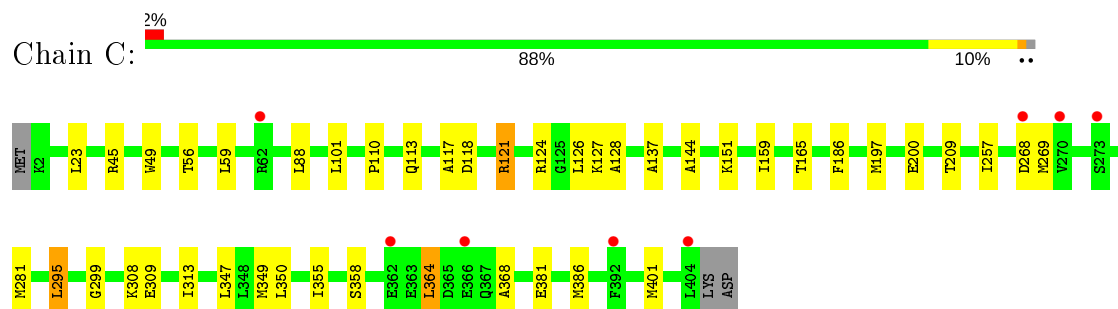
- Molecule 1: 3-oxoacyl-[acyl-carrier-protein] synthase I



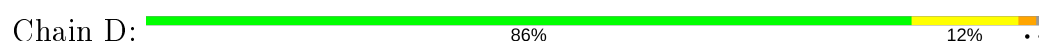
- Molecule 1: 3-oxoacyl-[acyl-carrier-protein] synthase I

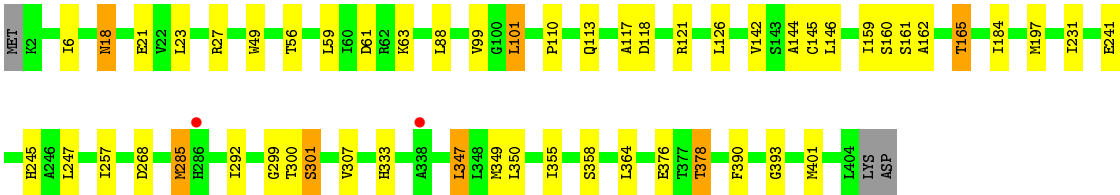


- Molecule 1: 3-oxoacyl-[acyl-carrier-protein] synthase I



- Molecule 1: 3-oxoacyl-[acyl-carrier-protein] synthase I





4 Data and refinement statistics

Property	Value	Source
Space group	P 21 21 21	Depositor
Cell constants a, b, c, α , β , γ	59.10Å 139.19Å 212.33Å 90.00° 90.00° 90.00°	Depositor
Resolution (Å)	40.00 – 2.19 37.99 – 2.19	Depositor EDS
% Data completeness (in resolution range)	99.5 (40.00-2.19) 99.6 (37.99-2.19)	Depositor EDS
R_{merge}	0.08	Depositor
R_{sym}	(Not available)	Depositor
$\langle I/\sigma(I) \rangle$ ¹	3.18 (at 2.20Å)	Xtriage
Refinement program	REFMAC 5.2.0005	Depositor
R, R_{free}	0.194 , 0.225 0.198 , 0.192	Depositor DCC
R_{free} test set	4522 reflections (5.01%)	wwPDB-VP
Wilson B-factor (Å ²)	16.4	Xtriage
Anisotropy	0.112	Xtriage
Bulk solvent k_{sol} (e/Å ³), B_{sol} (Å ²)	0.36 , 32.2	EDS
L-test for twinning ²	$\langle L \rangle = 0.47$, $\langle L^2 \rangle = 0.30$	Xtriage
Estimated twinning fraction	No twinning to report.	Xtriage
F_o, F_c correlation	0.93	EDS
Total number of atoms	12401	wwPDB-VP
Average B, all atoms (Å ²)	15.0	wwPDB-VP

Xtriage's analysis on translational NCS is as follows: *The largest off-origin peak in the Patterson function is 3.25% of the height of the origin peak. No significant pseudotranslation is detected.*

¹Intensities estimated from amplitudes.

²Theoretical values of $\langle |L| \rangle$, $\langle L^2 \rangle$ for acentric reflections are 0.5, 0.333 respectively for untwinned datasets, and 0.375, 0.2 for perfectly twinned datasets.

5 Model quality [i](#)

5.1 Standard geometry [i](#)

Bond lengths and bond angles in the following residue types are not validated in this section: TL6

The Z score for a bond length (or angle) is the number of standard deviations the observed value is removed from the expected value. A bond length (or angle) with $|Z| > 5$ is considered an outlier worth inspection. RMSZ is the root-mean-square of all Z scores of the bond lengths (or angles).

Mol	Chain	Bond lengths		Bond angles	
		RMSZ	$\# Z > 5$	RMSZ	$\# Z > 5$
1	A	0.40	0/3008	0.57	1/4065 (0.0%)
1	B	0.42	0/3003	0.57	0/4058
1	C	0.40	0/3003	0.56	0/4058
1	D	0.42	0/3003	0.60	1/4058 (0.0%)
All	All	0.41	0/12017	0.58	2/16239 (0.0%)

There are no bond length outliers.

All (2) bond angle outliers are listed below:

Mol	Chain	Res	Type	Atoms	Z	Observed(°)	Ideal(°)
1	A	101	LEU	CA-CB-CG	5.41	127.74	115.30
1	D	101	LEU	CA-CB-CG	5.15	127.15	115.30

There are no chirality outliers.

There are no planarity outliers.

5.2 Too-close contacts [i](#)

In the following table, the Non-H and H(model) columns list the number of non-hydrogen atoms and hydrogen atoms in the chain respectively. The H(added) column lists the number of hydrogen atoms added and optimized by MolProbity. The Clashes column lists the number of clashes within the asymmetric unit, whereas Symm-Clashes lists symmetry related clashes.

Mol	Chain	Non-H	H(model)	H(added)	Clashes	Symm-Clashes
1	A	2960	0	2915	27	0
1	B	2955	0	2910	32	0
1	C	2955	0	2910	31	0
1	D	2955	0	2910	38	0
2	A	13	0	11	0	0

Continued on next page...

Continued from previous page...

Mol	Chain	Non-H	H(model)	H(added)	Clashes	Symm-Clashes
2	B	13	0	11	2	0
2	D	13	0	11	1	0
3	A	126	0	0	2	0
3	B	141	0	0	2	0
3	C	126	0	0	1	0
3	D	144	0	0	3	0
All	All	12401	0	11678	105	0

The all-atom clashscore is defined as the number of clashes found per 1000 atoms (including hydrogen atoms). The all-atom clashscore for this structure is 4.

All (105) close contacts within the same asymmetric unit are listed below, sorted by their clash magnitude.

Atom-1	Atom-2	Interatomic distance (Å)	Clash overlap (Å)
1:D:349:MET:HE3	1:D:355:ILE:HA	1.38	1.00
1:C:349:MET:HE3	1:C:355:ILE:HA	1.55	0.86
1:B:117:ALA:O	1:B:121:ARG:HD2	1.78	0.83
1:B:309:GLU:O	1:B:313:ILE:HD13	1.79	0.82
1:D:349:MET:CE	1:D:355:ILE:HA	2.11	0.80
1:C:159:ILE:CD1	1:D:159:ILE:HD13	2.19	0.73
1:D:162:ALA:O	1:D:165:THR:HG23	1.90	0.71
1:C:309:GLU:O	1:C:313:ILE:HD13	1.91	0.70
1:A:349:MET:HE3	1:A:355:ILE:HA	1.72	0.70
1:B:231:ILE:HD11	1:B:335:LEU:HD11	1.73	0.69
1:C:159:ILE:HD13	1:D:159:ILE:HD13	1.75	0.69
1:C:159:ILE:CD1	1:D:159:ILE:CD1	2.73	0.67
1:D:61:ASP:HB3	3:D:671:HOH:O	1.94	0.67
1:A:279:ARG:NH2	1:B:153:HIS:O	2.27	0.67
1:A:101:LEU:HB2	1:A:152:ILE:HD13	1.78	0.66
1:C:349:MET:CE	1:C:355:ILE:HA	2.24	0.66
1:D:117:ALA:O	1:D:121:ARG:HD2	1.97	0.65
1:A:121:ARG:NH2	1:B:118:ASP:OD1	2.23	0.65
1:C:118:ASP:OD1	1:D:121:ARG:NH2	2.27	0.64
1:C:56:THR:HA	1:C:59:LEU:HD22	1.80	0.63
1:A:110:PRO:HG2	1:A:197:MET:HB2	1.79	0.63
1:A:117:ALA:O	1:A:121:ARG:HD2	2.00	0.62
1:B:147:ALA:HA	1:B:152:ILE:HD12	1.79	0.62
1:C:110:PRO:HG2	1:C:197:MET:HB2	1.82	0.62
1:D:162:ALA:O	1:D:165:THR:CG2	2.49	0.61
1:A:159:ILE:O	1:A:165:THR:HG23	2.01	0.61
1:A:147:ALA:HA	1:A:152:ILE:HD12	1.84	0.59

Continued on next page...

Continued from previous page...

Atom-1	Atom-2	Interatomic distance (Å)	Clash overlap (Å)
1:B:113:GLN:HG3	1:B:137:ALA:HB1	1.84	0.59
1:D:27:ARG:HD3	3:D:605:HOH:O	2.01	0.59
1:A:172:ASN:HD21	1:B:172:ASN:HD21	1.51	0.58
1:A:118:ASP:OD1	1:B:121:ARG:NH2	2.29	0.58
1:C:45:ARG:NH1	1:C:209:THR:HG21	2.18	0.58
1:C:121:ARG:NH2	1:D:118:ASP:OD1	2.34	0.58
1:D:142:VAL:O	1:D:146:LEU:HG	2.04	0.58
1:C:257:ILE:HD13	1:C:401:MET:HG2	1.86	0.57
1:D:18:ASN:ND2	1:D:21:GLU:H	2.03	0.57
1:C:269:MET:HE3	1:D:145:CYS:HA	1.86	0.57
1:D:6:ILE:HD12	1:D:347:LEU:HD21	1.86	0.57
1:A:144:ALA:O	1:B:269:MET:HE1	2.04	0.56
1:D:285:MET:HE2	1:D:285:MET:HA	1.87	0.56
1:B:268:ASP:HB3	3:B:719:HOH:O	2.05	0.56
1:C:159:ILE:HD13	1:D:159:ILE:CD1	2.36	0.56
1:D:241:GLU:OE1	1:D:245:HIS:HD2	1.88	0.55
1:C:45:ARG:HH11	1:C:209:THR:HG21	1.71	0.55
1:B:110:PRO:HG2	1:B:197:MET:HB2	1.88	0.55
1:C:117:ALA:O	1:C:121:ARG:HD2	2.07	0.55
1:C:269:MET:HE1	1:D:144:ALA:O	2.06	0.54
1:B:142:VAL:O	1:B:146:LEU:HG	2.08	0.54
1:D:160:SER:HA	1:D:165:THR:HB	1.89	0.54
1:D:376:GLU:O	1:D:378:THR:HG22	2.07	0.54
1:B:226:ARG:HH11	1:B:303:PRO:HA	1.73	0.53
1:D:110:PRO:HG2	1:D:197:MET:HB2	1.90	0.53
1:A:349:MET:CE	1:A:355:ILE:HA	2.39	0.52
1:A:79:MET:O	1:A:83:ILE:HD13	2.12	0.50
1:A:268:ASP:HB3	3:A:713:HOH:O	2.10	0.50
1:C:113:GLN:HG3	1:C:137:ALA:HB1	1.93	0.50
1:C:101:LEU:HD23	1:C:186:PHE:HB2	1.94	0.50
1:C:309:GLU:HG2	1:C:313:ILE:HD13	1.94	0.50
1:B:165:THR:HB	1:B:336:GLY:HA2	1.95	0.49
1:B:101:LEU:HB2	1:B:152:ILE:HD13	1.94	0.49
1:A:56:THR:HA	1:A:59:LEU:HD22	1.94	0.49
1:B:270:VAL:C	2:B:601:TL6:H7	2.33	0.49
1:D:161:SER:H	1:D:165:THR:HG22	1.77	0.48
1:C:159:ILE:O	1:C:165:THR:HG23	2.12	0.48
1:A:101:LEU:HD23	1:A:186:PHE:HB2	1.95	0.48
1:A:257:ILE:HD13	1:A:401:MET:HG2	1.96	0.48
1:A:145:CYS:HA	1:B:269:MET:CE	2.44	0.48
1:A:142:VAL:O	1:A:146:LEU:HG	2.14	0.48

Continued on next page...

Continued from previous page...

Atom-1	Atom-2	Interatomic distance (Å)	Clash overlap (Å)
1:B:226:ARG:NH1	1:B:303:PRO:HA	2.29	0.47
1:D:390:PHE:O	2:D:602:TL6:S1	2.72	0.47
1:C:144:ALA:HB1	1:D:393:GLY:HA3	1.97	0.47
1:B:257:ILE:HD13	1:B:401:MET:HG2	1.97	0.47
1:A:113:GLN:NE2	1:B:110:PRO:HB3	2.30	0.47
1:C:159:ILE:HD12	1:D:159:ILE:HD13	1.95	0.47
1:D:285:MET:CE	1:D:285:MET:HA	2.45	0.46
1:A:145:CYS:HA	1:B:269:MET:HE3	1.96	0.46
1:D:285:MET:HE1	1:D:292:ILE:HD11	1.96	0.46
1:C:269:MET:CE	1:D:145:CYS:HA	2.45	0.46
1:A:269:MET:CE	1:B:145:CYS:HA	2.45	0.45
1:B:355:ILE:HG21	1:B:374:VAL:HG11	1.98	0.45
1:B:117:ALA:O	1:B:121:ARG:CD	2.59	0.45
1:C:124:ARG:HB2	1:C:128:ALA:HB2	1.98	0.45
1:D:268:ASP:HB3	3:D:734:HOH:O	2.16	0.45
1:D:257:ILE:HD13	1:D:401:MET:HG2	1.98	0.45
1:A:269:MET:HE3	1:B:145:CYS:HA	1.98	0.45
1:C:127:LYS:NZ	3:C:470:HOH:O	2.35	0.44
1:D:56:THR:HA	1:D:59:LEU:HD22	1.99	0.44
1:C:364:LEU:HD11	1:C:368:ALA:HB3	2.00	0.44
1:C:281:MET:SD	1:C:386:MET:HE1	2.58	0.43
1:A:350:LEU:O	1:A:403:LYS:NZ	2.51	0.42
1:D:6:ILE:HD11	1:D:257:ILE:HD11	2.01	0.42
1:C:200:GLU:OE2	1:D:113:GLN:NE2	2.52	0.42
1:A:269:MET:HE3	3:B:670:HOH:O	2.19	0.42
1:D:285:MET:CE	1:D:292:ILE:HD11	2.49	0.42
1:C:295:LEU:HG	1:C:386:MET:HE2	2.02	0.41
1:B:174:VAL:HG21	1:B:257:ILE:HG21	2.01	0.41
1:B:281:MET:CE	1:B:313:ILE:HD12	2.50	0.41
1:C:117:ALA:O	1:C:121:ARG:CD	2.69	0.41
1:D:300:THR:O	1:D:301:SER:CB	2.68	0.41
1:B:302:THR:HG21	2:B:601:TL6:H91	2.03	0.41
1:B:292:ILE:O	1:B:322:PRO:HB3	2.21	0.41
1:D:99:VAL:HG22	1:D:184:ILE:HB	2.02	0.41
1:A:231:ILE:CD1	3:A:601:HOH:O	2.68	0.40
1:A:148:THR:HB	1:B:269:MET:CE	2.51	0.40
1:B:159:ILE:O	1:B:165:THR:HG23	2.21	0.40

There are no symmetry-related clashes.

5.3 Torsion angles

5.3.1 Protein backbone

In the following table, the Percentiles column shows the percent Ramachandran outliers of the chain as a percentile score with respect to all X-ray entries followed by that with respect to entries of similar resolution.

The Analysed column shows the number of residues for which the backbone conformation was analysed, and the total number of residues.

Mol	Chain	Analysed	Favoured	Allowed	Outliers	Percentiles	
1	A	402/406 (99%)	387 (96%)	13 (3%)	2 (0%)	29	31
1	B	401/406 (99%)	387 (96%)	12 (3%)	2 (0%)	29	31
1	C	401/406 (99%)	385 (96%)	15 (4%)	1 (0%)	47	55
1	D	401/406 (99%)	385 (96%)	14 (4%)	2 (0%)	29	31
All	All	1605/1624 (99%)	1544 (96%)	54 (3%)	7 (0%)	34	37

All (7) Ramachandran outliers are listed below:

Mol	Chain	Res	Type
1	A	299	GLY
1	B	299	GLY
1	C	299	GLY
1	D	301	SER
1	B	301	SER
1	A	301	SER
1	D	299	GLY

5.3.2 Protein sidechains

In the following table, the Percentiles column shows the percent sidechain outliers of the chain as a percentile score with respect to all X-ray entries followed by that with respect to entries of similar resolution.

The Analysed column shows the number of residues for which the sidechain conformation was analysed, and the total number of residues.

Mol	Chain	Analysed	Rotameric	Outliers	Percentiles	
1	A	306/309 (99%)	290 (95%)	16 (5%)	23	28
1	B	306/309 (99%)	292 (95%)	14 (5%)	27	34
1	C	306/309 (99%)	292 (95%)	14 (5%)	27	34

Continued on next page...

Continued from previous page...

Mol	Chain	Analysed	Rotameric	Outliers	Percentiles	
1	D	306/309 (99%)	288 (94%)	18 (6%)	19	23
All	All	1224/1236 (99%)	1162 (95%)	62 (5%)	24	29

All (62) residues with a non-rotameric sidechain are listed below:

Mol	Chain	Res	Type
1	A	23	LEU
1	A	49	TRP
1	A	62	ARG
1	A	88	LEU
1	A	121	ARG
1	A	126	LEU
1	A	231	ILE
1	A	275	GLU
1	A	310	LEU
1	A	333	HIS
1	A	347	LEU
1	A	350	LEU
1	A	364	LEU
1	A	372	ASN
1	A	376	GLU
1	A	378	THR
1	B	23	LEU
1	B	30	ARG
1	B	49	TRP
1	B	91	GLU
1	B	121	ARG
1	B	172	ASN
1	B	313	ILE
1	B	333	HIS
1	B	347	LEU
1	B	350	LEU
1	B	364	LEU
1	B	374	VAL
1	B	381	GLU
1	B	404	LEU
1	C	23	LEU
1	C	49	TRP
1	C	88	LEU
1	C	121	ARG
1	C	126	LEU
1	C	151	LYS

Continued on next page...

Continued from previous page...

Mol	Chain	Res	Type
1	C	268	ASP
1	C	295	LEU
1	C	308	LYS
1	C	347	LEU
1	C	350	LEU
1	C	358	SER
1	C	364	LEU
1	C	381	GLU
1	D	18	ASN
1	D	23	LEU
1	D	49	TRP
1	D	63	LYS
1	D	88	LEU
1	D	101	LEU
1	D	126	LEU
1	D	165	THR
1	D	231	ILE
1	D	247	LEU
1	D	285	MET
1	D	307	VAL
1	D	333	HIS
1	D	347	LEU
1	D	350	LEU
1	D	358	SER
1	D	364	LEU
1	D	378	THR

Some sidechains can be flipped to improve hydrogen bonding and reduce clashes. All (15) such sidechains are listed below:

Mol	Chain	Res	Type
1	A	37	GLN
1	A	113	GLN
1	A	172	ASN
1	A	341	GLN
1	A	372	ASN
1	B	341	GLN
1	B	372	ASN
1	C	172	ASN
1	C	341	GLN
1	C	372	ASN
1	D	18	ASN
1	D	172	ASN

Continued on next page...

Continued from previous page...

Mol	Chain	Res	Type
1	D	245	HIS
1	D	341	GLN
1	D	372	ASN

5.3.3 RNA ⓘ

There are no RNA molecules in this entry.

5.4 Non-standard residues in protein, DNA, RNA chains ⓘ

There are no non-standard protein/DNA/RNA residues in this entry.

5.5 Carbohydrates ⓘ

There are no carbohydrates in this entry.

5.6 Ligand geometry ⓘ

3 ligands are modelled in this entry.

In the following table, the Counts columns list the number of bonds (or angles) for which Mogul statistics could be retrieved, the number of bonds (or angles) that are observed in the model and the number of bonds (or angles) that are defined in the Chemical Component Dictionary. The Link column lists molecule types, if any, to which the group is linked. The Z score for a bond length (or angle) is the number of standard deviations the observed value is removed from the expected value. A bond length (or angle) with $|Z| > 2$ is considered an outlier worth inspection. RMSZ is the root-mean-square of all Z scores of the bond lengths (or angles).

Mol	Type	Chain	Res	Link	Bond lengths			Bond angles		
					Counts	RMSZ	$\# Z > 2$	Counts	RMSZ	$\# Z > 2$
2	TL6	A	600	-	7,13,13	0.51	0	8,19,19	2.05	4 (50%)
2	TL6	D	602	-	7,13,13	0.45	0	8,19,19	1.87	4 (50%)
2	TL6	B	601	-	7,13,13	0.52	0	8,19,19	2.17	4 (50%)

In the following table, the Chirals column lists the number of chiral outliers, the number of chiral centers analysed, the number of these observed in the model and the number defined in the Chemical Component Dictionary. Similar counts are reported in the Torsion and Rings columns. '-' means no outliers of that kind were identified.

Mol	Type	Chain	Res	Link	Chirals	Torsions	Rings
2	TL6	A	600	-	-	2/3/24/24	0/1/1/1
2	TL6	D	602	-	-	2/3/24/24	0/1/1/1
2	TL6	B	601	-	-	1/3/24/24	0/1/1/1

There are no bond length outliers.

All (12) bond angle outliers are listed below:

Mol	Chain	Res	Type	Atoms	Z	Observed(°)	Ideal(°)
2	B	601	TL6	C7-C6-C5	-3.97	116.95	126.25
2	A	600	TL6	C7-C6-C5	-3.02	119.18	126.25
2	A	600	TL6	C9-C2-C3	-3.01	123.49	131.27
2	B	601	TL6	C9-C2-C3	-3.00	123.53	131.27
2	A	600	TL6	O1-C1-C2	-2.98	122.98	128.35
2	D	602	TL6	O1-C1-C2	-2.78	123.35	128.35
2	D	602	TL6	C7-C6-C5	-2.72	119.89	126.25
2	D	602	TL6	C9-C2-C3	-2.64	124.45	131.27
2	B	601	TL6	O1-C1-C2	-2.56	123.73	128.35
2	A	600	TL6	C1-C2-C3	2.43	113.43	107.72
2	B	601	TL6	C1-C2-C3	2.39	113.34	107.72
2	D	602	TL6	C1-C2-C3	2.15	112.78	107.72

There are no chirality outliers.

All (5) torsion outliers are listed below:

Mol	Chain	Res	Type	Atoms
2	A	600	TL6	C10-C4-C5-C6
2	A	600	TL6	C5-C6-C7-C8
2	D	602	TL6	C5-C6-C7-C8
2	B	601	TL6	C10-C4-C5-C6
2	D	602	TL6	C10-C4-C5-C6

There are no ring outliers.

2 monomers are involved in 3 short contacts:

Mol	Chain	Res	Type	Clashes	Symm-Clashes
2	D	602	TL6	1	0
2	B	601	TL6	2	0

5.7 Other polymers [i](#)

There are no such residues in this entry.

5.8 Polymer linkage issues [i](#)

There are no chain breaks in this entry.

6 Fit of model and data ⓘ

6.1 Protein, DNA and RNA chains ⓘ

In the following table, the column labelled ‘#RSRZ> 2’ contains the number (and percentage) of RSRZ outliers, followed by percent RSRZ outliers for the chain as percentile scores relative to all X-ray entries and entries of similar resolution. The OWAB column contains the minimum, median, 95th percentile and maximum values of the occupancy-weighted average B-factor per residue. The column labelled ‘Q< 0.9’ lists the number of (and percentage) of residues with an average occupancy less than 0.9.

Mol	Chain	Analysed	<RSRZ>	#RSRZ>2	OWAB(Å ²)	Q<0.9
1	A	404/406 (99%)	-0.00	6 (1%) 73 72	9, 16, 31, 42	0
1	B	403/406 (99%)	-0.23	1 (0%) 95 94	6, 12, 22, 29	0
1	C	403/406 (99%)	-0.10	8 (1%) 65 63	8, 15, 25, 37	0
1	D	403/406 (99%)	-0.19	2 (0%) 91 90	6, 12, 21, 27	0
All	All	1613/1624 (99%)	-0.13	17 (1%) 80 79	6, 14, 25, 42	0

All (17) RSRZ outliers are listed below:

Mol	Chain	Res	Type	RSRZ
1	C	270	VAL	4.6
1	A	319	ASP	3.5
1	C	62	ARG	2.8
1	C	362	GLU	2.8
1	A	1	MET	2.8
1	C	268	ASP	2.7
1	B	62	ARG	2.6
1	A	213	ASP	2.3
1	A	286	HIS	2.3
1	C	366	GLU	2.2
1	C	404	LEU	2.2
1	A	62	ARG	2.2
1	C	392	PHE	2.1
1	C	273	SER	2.1
1	D	338	ALA	2.1
1	D	286	HIS	2.0
1	A	165	THR	2.0

6.2 Non-standard residues in protein, DNA, RNA chains ⓘ

There are no non-standard protein/DNA/RNA residues in this entry.

6.3 Carbohydrates [i](#)

There are no carbohydrates in this entry.

6.4 Ligands [i](#)

In the following table, the Atoms column lists the number of modelled atoms in the group and the number defined in the chemical component dictionary. The B-factors column lists the minimum, median, 95th percentile and maximum values of B factors of atoms in the group. The column labelled 'Q< 0.9' lists the number of atoms with occupancy less than 0.9.

Mol	Type	Chain	Res	Atoms	RSCC	RSR	B-factors(\AA^2)	Q<0.9
2	TL6	A	600	13/13	0.54	0.51	16,16,16,16	13
2	TL6	D	602	13/13	0.57	0.49	16,16,16,16	13
2	TL6	B	601	13/13	0.67	0.39	16,16,16,16	13

6.5 Other polymers [i](#)

There are no such residues in this entry.