



# wwPDB X-ray Structure Validation Summary Report ⓘ

May 13, 2020 – 03:09 am BST

PDB ID : 6AQ7  
Title : Structure of POM6 FAB fragment complexed with mouse PrPc  
Authors : Baral, P.K.; Swayampakula, M.; James, M.N.G.  
Deposited on : 2017-08-18  
Resolution : 1.83 Å(reported)

This is a wwPDB X-ray Structure Validation Summary Report for a publicly released PDB entry.

We welcome your comments at [validation@mail.wwpdb.org](mailto:validation@mail.wwpdb.org)

A user guide is available at

<https://www.wwpdb.org/validation/2017/XrayValidationReportHelp>

with specific help available everywhere you see the ⓘ symbol.

---

The following versions of software and data (see [references ⓘ](#)) were used in the production of this report:

MolProbity : 4.02b-467  
Mogul : 1.8.5 (274361), CSD as541be (2020)  
Xtriage (Phenix) : 1.13  
EDS : 2.11  
buster-report : 1.1.7 (2018)  
Percentile statistics : 20191225.v01 (using entries in the PDB archive December 25th 2019)  
Refmac : 5.8.0158  
CCP4 : 7.0.044 (Gargrove)  
Ideal geometry (proteins) : Engh & Huber (2001)  
Ideal geometry (DNA, RNA) : Parkinson et al. (1996)  
Validation Pipeline (wwPDB-VP) : 2.11

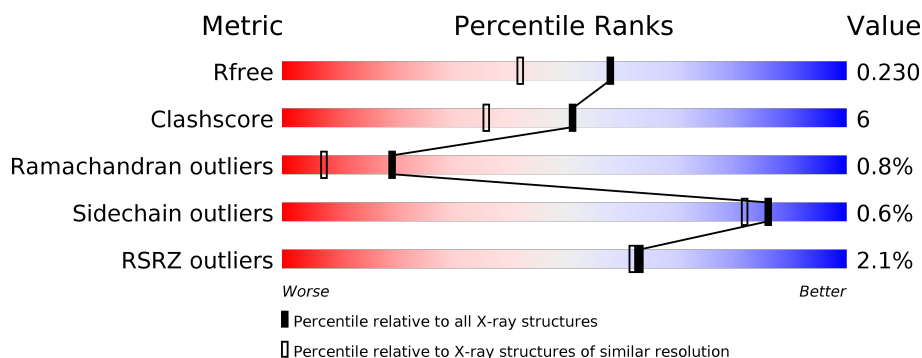
# 1 Overall quality at a glance

The following experimental techniques were used to determine the structure:

*X-RAY DIFFRACTION*

The reported resolution of this entry is 1.83 Å.

Percentile scores (ranging between 0-100) for global validation metrics of the entry are shown in the following graphic. The table shows the number of entries on which the scores are based.



Metric	Whole archive (#Entries)	Similar resolution (#Entries, resolution range(Å))
$R_{free}$	130704	4003 (1.86-1.82)
Clashscore	141614	4233 (1.86-1.82)
Ramachandran outliers	138981	4185 (1.86-1.82)
Sidechain outliers	138945	4186 (1.86-1.82)
RSRZ outliers	127900	3957 (1.86-1.82)

The table below summarises the geometric issues observed across the polymeric chains and their fit to the electron density. The red, orange, yellow and green segments on the lower bar indicate the fraction of residues that contain outliers for  $\geq 3$ , 2, 1 and 0 types of geometric quality criteria respectively. A grey segment represents the fraction of residues that are not modelled. The numeric value for each fraction is indicated below the corresponding segment, with a dot representing fractions  $\leq 5\%$ . The upper red bar (where present) indicates the fraction of residues that have poor fit to the electron density. The numeric value is given above the bar.

Mol	Chain	Length	Quality of chain
1	A	122	<div> <div>2%</div> <div> <div></div> <div>72%</div> <div>10%</div> <div>18%</div> </div> </div>
2	H	214	<div> <div>4%</div> <div> <div></div> <div>86%</div> <div>13%</div> <div></div> </div> </div>
3	L	216	<div> <div></div> <div> <div></div> <div>90%</div> <div>9%</div> <div></div> </div> </div>

## 2 Entry composition

There are 6 unique types of molecules in this entry. The entry contains 4627 atoms, of which 0 are hydrogens and 0 are deuteriums.

In the tables below, the ZeroOcc column contains the number of atoms modelled with zero occupancy, the AltConf column contains the number of residues with at least one atom in alternate conformation and the Trace column contains the number of residues modelled with at most 2 atoms.

- Molecule 1 is a protein called Major prion protein.

Mol	Chain	Residues	Atoms					ZeroOcc	AltConf	Trace
1	A	100	Total	C	N	O	S	0	0	0
			839	522	145	163	9			

There are 23 discrepancies between the modelled and reference sequences:

Chain	Residue	Modelled	Actual	Comment	Reference
A	104	MET	-	initiating methionine	UNP P04925
A	105	GLY	-	expression tag	UNP P04925
A	106	SER	-	expression tag	UNP P04925
A	107	SER	-	expression tag	UNP P04925
A	108	HIS	-	expression tag	UNP P04925
A	109	HIS	-	expression tag	UNP P04925
A	110	HIS	-	expression tag	UNP P04925
A	111	HIS	-	expression tag	UNP P04925
A	112	HIS	-	expression tag	UNP P04925
A	113	HIS	-	expression tag	UNP P04925
A	114	SER	-	expression tag	UNP P04925
A	115	SER	-	expression tag	UNP P04925
A	116	GLY	-	expression tag	UNP P04925
A	117	LEU	-	expression tag	UNP P04925
A	118	VAL	-	expression tag	UNP P04925
A	119	PRO	-	expression tag	UNP P04925
A	120	ARG	-	expression tag	UNP P04925
A	121	GLY	-	expression tag	UNP P04925
A	122	SER	-	expression tag	UNP P04925
A	123	HIS	-	expression tag	UNP P04925
A	124	MET	-	expression tag	UNP P04925
A	125	GLY	-	expression tag	UNP P04925
A	126	GLY	-	expression tag	UNP P04925

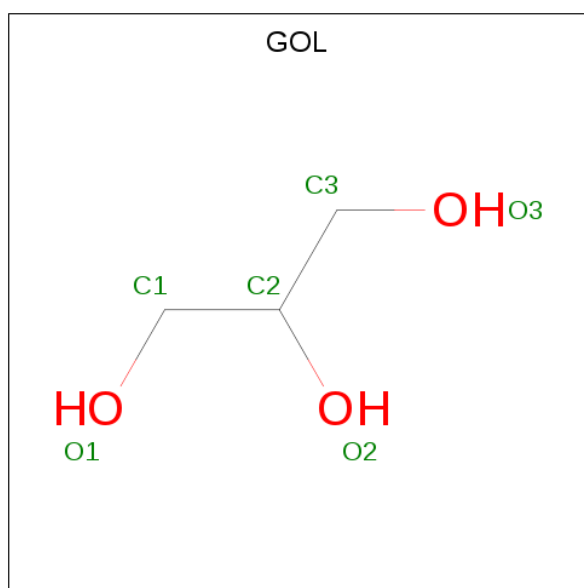
- Molecule 2 is a protein called POM6 FAB Heavy CHAIN.

Mol	Chain	Residues	Atoms					ZeroOcc	AltConf	Trace
2	H	214	Total	C	N	O	S	0	0	0
			1632	1037	274	314	7			

- Molecule 3 is a protein called POM6 FAB light CHAIN.

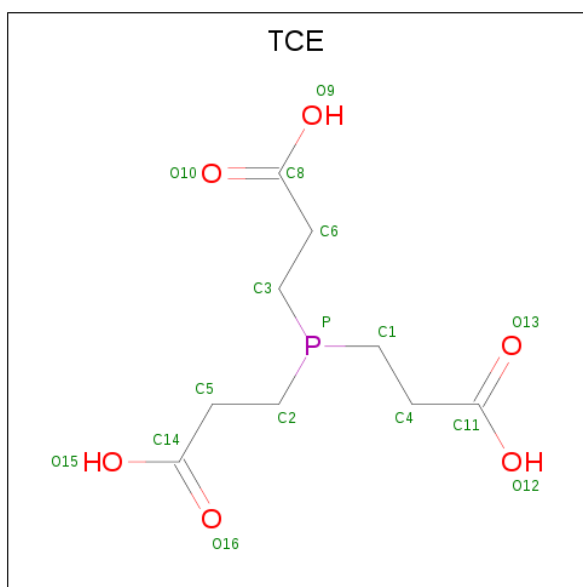
Mol	Chain	Residues	Atoms					ZeroOcc	AltConf	Trace
3	L	216	Total	C	N	O	S	0	0	0
			1668	1038	281	341	8			

- Molecule 4 is GLYCEROL (three-letter code: GOL) (formula: C<sub>3</sub>H<sub>8</sub>O<sub>3</sub>).



Mol	Chain	Residues	Atoms			ZeroOcc	AltConf
4	A	1	Total	C	O	0	0
			6	3	3		
4	L	1	Total	C	O	0	0
			6	3	3		

- Molecule 5 is 3,3',3''-phosphanetriyltripropanoic acid (three-letter code: TCE) (formula: C<sub>9</sub>H<sub>15</sub>O<sub>6</sub>P).



Mol	Chain	Residues	Atoms				ZeroOcc	AltConf
5	H	1	Total	C	O	P	0	0
			16	9	6	1		

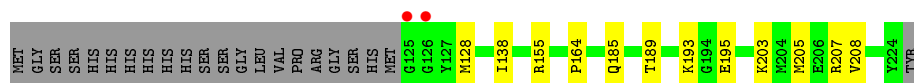
- Molecule 6 is water.

Mol	Chain	Residues	Atoms		ZeroOcc	AltConf
6	A	78	Total	O	0	0
			78	78		
6	H	185	Total	O	0	0
			185	185		
6	L	197	Total	O	0	0
			197	197		

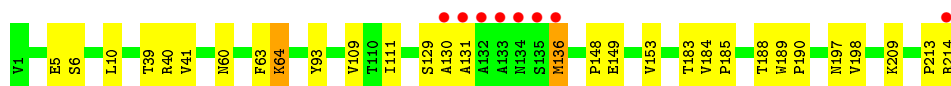
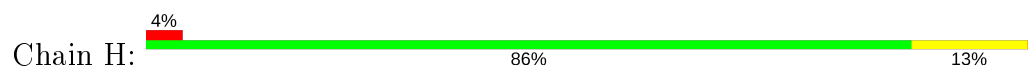
### 3 Residue-property plots [i](#)

These plots are drawn for all protein, RNA and DNA chains in the entry. The first graphic for a chain summarises the proportions of the various outlier classes displayed in the second graphic. The second graphic shows the sequence view annotated by issues in geometry and electron density. Residues are color-coded according to the number of geometric quality criteria for which they contain at least one outlier: green = 0, yellow = 1, orange = 2 and red = 3 or more. A red dot above a residue indicates a poor fit to the electron density ( $RSRZ > 2$ ). Stretches of 2 or more consecutive residues without any outlier are shown as a green connector. Residues present in the sample, but not in the model, are shown in grey.

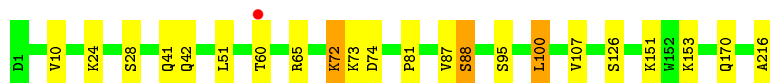
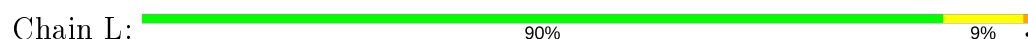
- Molecule 1: Major prion protein



- Molecule 2: POM6 FAB Heavy CHAIN



- Molecule 3: POM6 FAB light CHAIN



## 4 Data and refinement statistics

Property	Value	Source
Space group	P 2 <sub>1</sub> 2 <sub>1</sub> 2 <sub>1</sub>	Depositor
Cell constants a, b, c, $\alpha$ , $\beta$ , $\gamma$	72.04Å 82.42Å 103.70Å 90.00° 90.00° 90.00°	Depositor
Resolution (Å)	48.00 – 1.83 48.06 – 1.83	Depositor EDS
% Data completeness (in resolution range)	99.7 (48.00-1.83) 99.7 (48.06-1.83)	Depositor EDS
$R_{merge}$	(Not available)	Depositor
$R_{sym}$	(Not available)	Depositor
$\langle I/\sigma(I) \rangle$ <sup>1</sup>	1.42 (at 1.83Å)	Xtriage
Refinement program	PHENIX 1.12_2829	Depositor
R, $R_{free}$	0.197 , 0.230 0.197 , 0.230	Depositor DCC
$R_{free}$ test set	2751 reflections (5.00%)	wwPDB-VP
Wilson B-factor (Å <sup>2</sup> )	26.8	Xtriage
Anisotropy	0.276	Xtriage
Bulk solvent $k_{sol}$ (e/Å <sup>3</sup> ), $B_{sol}$ (Å <sup>2</sup> )	0.35 , 42.7	EDS
L-test for twinning <sup>2</sup>	$\langle  L  \rangle = 0.48$ , $\langle L^2 \rangle = 0.31$	Xtriage
Estimated twinning fraction	No twinning to report.	Xtriage
$F_o, F_c$ correlation	0.96	EDS
Total number of atoms	4627	wwPDB-VP
Average B, all atoms (Å <sup>2</sup> )	31.0	wwPDB-VP

Xtriage's analysis on translational NCS is as follows: *The largest off-origin peak in the Patterson function is 4.71% of the height of the origin peak. No significant pseudotranslation is detected.*

<sup>1</sup>Intensities estimated from amplitudes.

<sup>2</sup>Theoretical values of  $\langle |L| \rangle$ ,  $\langle L^2 \rangle$  for acentric reflections are 0.5, 0.333 respectively for untwinned datasets, and 0.375, 0.2 for perfectly twinned datasets.

## 5 Model quality [i](#)

### 5.1 Standard geometry [i](#)

Bond lengths and bond angles in the following residue types are not validated in this section: GOL, TCE

The Z score for a bond length (or angle) is the number of standard deviations the observed value is removed from the expected value. A bond length (or angle) with  $|Z| > 5$  is considered an outlier worth inspection. RMSZ is the root-mean-square of all Z scores of the bond lengths (or angles).

Mol	Chain	Bond lengths		Bond angles	
		RMSZ	$\# Z  > 5$	RMSZ	$\# Z  > 5$
1	A	0.39	0/859	0.54	0/1161
2	H	0.40	0/1676	0.61	0/2290
3	L	0.40	0/1705	0.60	1/2318 (0.0%)
All	All	0.40	0/4240	0.59	1/5769 (0.0%)

There are no bond length outliers.

All (1) bond angle outliers are listed below:

Mol	Chain	Res	Type	Atoms	Z	Observed(°)	Ideal(°)
3	L	100	LEU	CA-CB-CG	5.61	128.21	115.30

There are no chirality outliers.

There are no planarity outliers.

### 5.2 Too-close contacts [i](#)

In the following table, the Non-H and H(model) columns list the number of non-hydrogen atoms and hydrogen atoms in the chain respectively. The H(added) column lists the number of hydrogen atoms added and optimized by MolProbity. The Clashes column lists the number of clashes within the asymmetric unit, whereas Symm-Clashes lists symmetry related clashes.

Mol	Chain	Non-H	H(model)	H(added)	Clashes	Symm-Clashes
1	A	839	0	776	8	0
2	H	1632	0	1615	20	0
3	L	1668	0	1615	17	0
4	A	6	0	8	0	0
4	L	6	0	8	3	0
5	H	16	0	12	2	0
6	A	78	0	0	0	1

*Continued on next page...*



*Continued from previous page...*

Mol	Chain	Non-H	H(model)	H(added)	Clashes	Symm-Clashes
6	H	185	0	0	4	1
6	L	197	0	0	3	2
All	All	4627	0	4034	46	2

The all-atom clashscore is defined as the number of clashes found per 1000 atoms (including hydrogen atoms). The all-atom clashscore for this structure is 6.

The worst 5 of 46 close contacts within the same asymmetric unit are listed below, sorted by their clash magnitude.

Atom-1	Atom-2	Interatomic distance (Å)	Clash overlap (Å)
2:H:60:ASN:ND2	5:H:301:TCE:O10	2.09	0.85
2:H:40:ARG:NH2	6:H:401:HOH:O	2.14	0.80
3:L:87:VAL:HG21	3:L:170:GLN:HB3	1.72	0.69
3:L:216:ALA:O	6:L:501:HOH:O	2.11	0.68
2:H:149:GLU:OE2	6:H:402:HOH:O	2.16	0.63

All (2) symmetry-related close contacts are listed below. The label for Atom-2 includes the symmetry operator and encoded unit-cell translations to be applied.

Atom-1	Atom-2	Interatomic distance (Å)	Clash overlap (Å)
6:H:437:HOH:O	6:L:544:HOH:O[2_558]	2.13	0.07
6:A:656:HOH:O	6:L:527:HOH:O[4_554]	2.19	0.01

## 5.3 Torsion angles [i](#)

### 5.3.1 Protein backbone [i](#)

In the following table, the Percentiles column shows the percent Ramachandran outliers of the chain as a percentile score with respect to all X-ray entries followed by that with respect to entries of similar resolution.

The Analysed column shows the number of residues for which the backbone conformation was analysed, and the total number of residues.

Mol	Chain	Analysed	Favoured	Allowed	Outliers	Percentiles	
1	A	98/122 (80%)	97 (99%)	1 (1%)	0	100	100
2	H	212/214 (99%)	204 (96%)	6 (3%)	2 (1%)	17	6
3	L	214/216 (99%)	204 (95%)	8 (4%)	2 (1%)	17	6

*Continued on next page...*

*Continued from previous page...*

Mol	Chain	Analysed	Favoured	Allowed	Outliers	Percentiles
All	All	524/552 (95%)	505 (96%)	15 (3%)	4 (1%)	19 7

All (4) Ramachandran outliers are listed below:

Mol	Chain	Res	Type
2	H	130	ALA
2	H	64	LYS
3	L	72	LYS
3	L	88	SER

### 5.3.2 Protein sidechains ⓘ

In the following table, the Percentiles column shows the percent sidechain outliers of the chain as a percentile score with respect to all X-ray entries followed by that with respect to entries of similar resolution.

The Analysed column shows the number of residues for which the sidechain conformation was analysed, and the total number of residues.

Mol	Chain	Analysed	Rotameric	Outliers	Percentiles
1	A	93/112 (83%)	93 (100%)	0	100 100
2	H	186/186 (100%)	184 (99%)	2 (1%)	73 64
3	L	192/192 (100%)	191 (100%)	1 (0%)	88 85
All	All	471/490 (96%)	468 (99%)	3 (1%)	86 82

All (3) residues with a non-rotameric sidechain are listed below:

Mol	Chain	Res	Type
2	H	136	MET
2	H	197	ASN
3	L	126	SER

Some sidechains can be flipped to improve hydrogen bonding and reduce clashes. There are no such sidechains identified.

### 5.3.3 RNA ⓘ

There are no RNA molecules in this entry.

## 5.4 Non-standard residues in protein, DNA, RNA chains [i](#)

There are no non-standard protein/DNA/RNA residues in this entry.

## 5.5 Carbohydrates [i](#)

There are no carbohydrates in this entry.

## 5.6 Ligand geometry [i](#)

3 ligands are modelled in this entry.

In the following table, the Counts columns list the number of bonds (or angles) for which Mogul statistics could be retrieved, the number of bonds (or angles) that are observed in the model and the number of bonds (or angles) that are defined in the Chemical Component Dictionary. The Link column lists molecule types, if any, to which the group is linked. The Z score for a bond length (or angle) is the number of standard deviations the observed value is removed from the expected value. A bond length (or angle) with  $|Z| > 2$  is considered an outlier worth inspection. RMSZ is the root-mean-square of all Z scores of the bond lengths (or angles).

Mol	Type	Chain	Res	Link	Bond lengths			Bond angles		
					Counts	RMSZ	$\# Z  > 2$	Counts	RMSZ	$\# Z  > 2$
4	GOL	A	501	-	5,5,5	0.84	0	5,5,5	1.14	0
5	TCE	H	301	-	6,15,15	7.44	3 (50%)	9,18,18	8.87	7 (77%)
4	GOL	L	401	-	5,5,5	0.62	0	5,5,5	1.28	0

In the following table, the Chirals column lists the number of chiral outliers, the number of chiral centers analysed, the number of these observed in the model and the number defined in the Chemical Component Dictionary. Similar counts are reported in the Torsion and Rings columns. '-' means no outliers of that kind were identified.

Mol	Type	Chain	Res	Link	Chirals	Torsions	Rings
4	GOL	A	501	-	-	0/4/4/4	-
5	TCE	H	301	-	-	6/9/15/15	-
4	GOL	L	401	-	-	2/4/4/4	-

All (3) bond length outliers are listed below:

Mol	Chain	Res	Type	Atoms	Z	Observed(Å)	Ideal(Å)
5	H	301	TCE	P-C1	-15.26	1.62	1.84
5	H	301	TCE	C3-C6	-7.72	1.40	1.53
5	H	301	TCE	C1-C4	-5.81	1.43	1.53

The worst 5 of 7 bond angle outliers are listed below:

Mol	Chain	Res	Type	Atoms	Z	Observed(°)	Ideal(°)
5	H	301	TCE	P-C3-C6	16.06	132.53	113.67
5	H	301	TCE	P-C1-C4	14.67	130.89	113.67
5	H	301	TCE	P-C2-C5	-9.45	102.58	113.67
5	H	301	TCE	C1-P-C3	8.14	126.88	100.95
5	H	301	TCE	C3-C6-C8	-5.61	96.00	112.65

There are no chirality outliers.

5 of 8 torsion outliers are listed below:

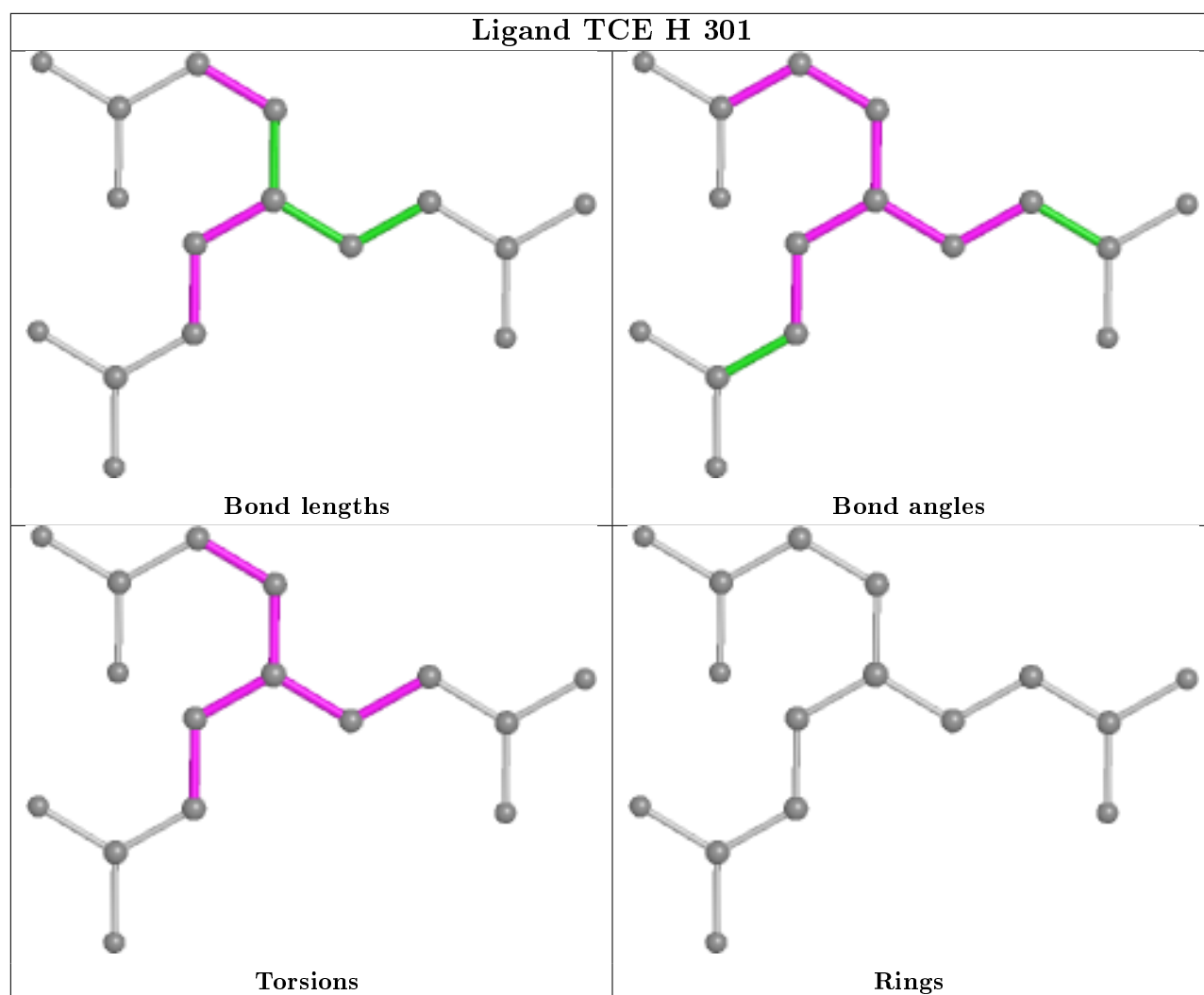
Mol	Chain	Res	Type	Atoms
5	H	301	TCE	P-C2-C5-C14
5	H	301	TCE	C5-C2-P-C3
5	H	301	TCE	C6-C3-P-C1
5	H	301	TCE	C4-C1-P-C3
5	H	301	TCE	P-C1-C4-C11

There are no ring outliers.

2 monomers are involved in 5 short contacts:

Mol	Chain	Res	Type	Clashes	Symm-Clashes
5	H	301	TCE	2	0
4	L	401	GOL	3	0

The following is a two-dimensional graphical depiction of Mogul quality analysis of bond lengths, bond angles, torsion angles, and ring geometry for all instances of the Ligand of Interest. In addition, ligands with molecular weight > 250 and outliers as shown on the validation Tables will also be included. For torsion angles, if less than 5% of the Mogul distribution of torsion angles is within 10 degrees of the torsion angle in question, then that torsion angle is considered an outlier. Any bond that is central to one or more torsion angles identified as an outlier by Mogul will be highlighted in the graph. For rings, the root-mean-square deviation (RMSD) between the ring in question and similar rings identified by Mogul is calculated over all ring torsion angles. If the average RMSD is greater than 60 degrees and the minimal RMSD between the ring in question and any Mogul-identified rings is also greater than 60 degrees, then that ring is considered an outlier. The outliers are highlighted in purple. The color gray indicates Mogul did not find sufficient equivalents in the CSD to analyse the geometry.



## 5.7 Other polymers [i](#)

There are no such residues in this entry.

## 5.8 Polymer linkage issues [i](#)

There are no chain breaks in this entry.

## 6 Fit of model and data [i](#)

### 6.1 Protein, DNA and RNA chains [i](#)

In the following table, the column labelled ‘#RSRZ> 2’ contains the number (and percentage) of RSRZ outliers, followed by percent RSRZ outliers for the chain as percentile scores relative to all X-ray entries and entries of similar resolution. The OWAB column contains the minimum, median, 95<sup>th</sup> percentile and maximum values of the occupancy-weighted average B-factor per residue. The column labelled ‘Q< 0.9’ lists the number of (and percentage) of residues with an average occupancy less than 0.9.

Mol	Chain	Analysed	<RSRZ>	#RSRZ>2	OWAB(Å <sup>2</sup> )	Q<0.9
1	A	100/122 (81%)	-0.04	2 (2%) 65 64	20, 35, 55, 61	0
2	H	214/214 (100%)	-0.00	8 (3%) 41 38	20, 29, 49, 86	0
3	L	216/216 (100%)	-0.16	1 (0%) 91 91	18, 27, 41, 50	0
All	All	530/552 (96%)	-0.07	11 (2%) 63 62	18, 29, 48, 86	0

The worst 5 of 11 RSRZ outliers are listed below:

Mol	Chain	Res	Type	RSRZ
2	H	133	ALA	9.5
2	H	131	ALA	6.7
2	H	134	ASN	5.6
2	H	136	MET	4.3
2	H	132	ALA	3.1

### 6.2 Non-standard residues in protein, DNA, RNA chains [i](#)

There are no non-standard protein/DNA/RNA residues in this entry.

### 6.3 Carbohydrates [i](#)

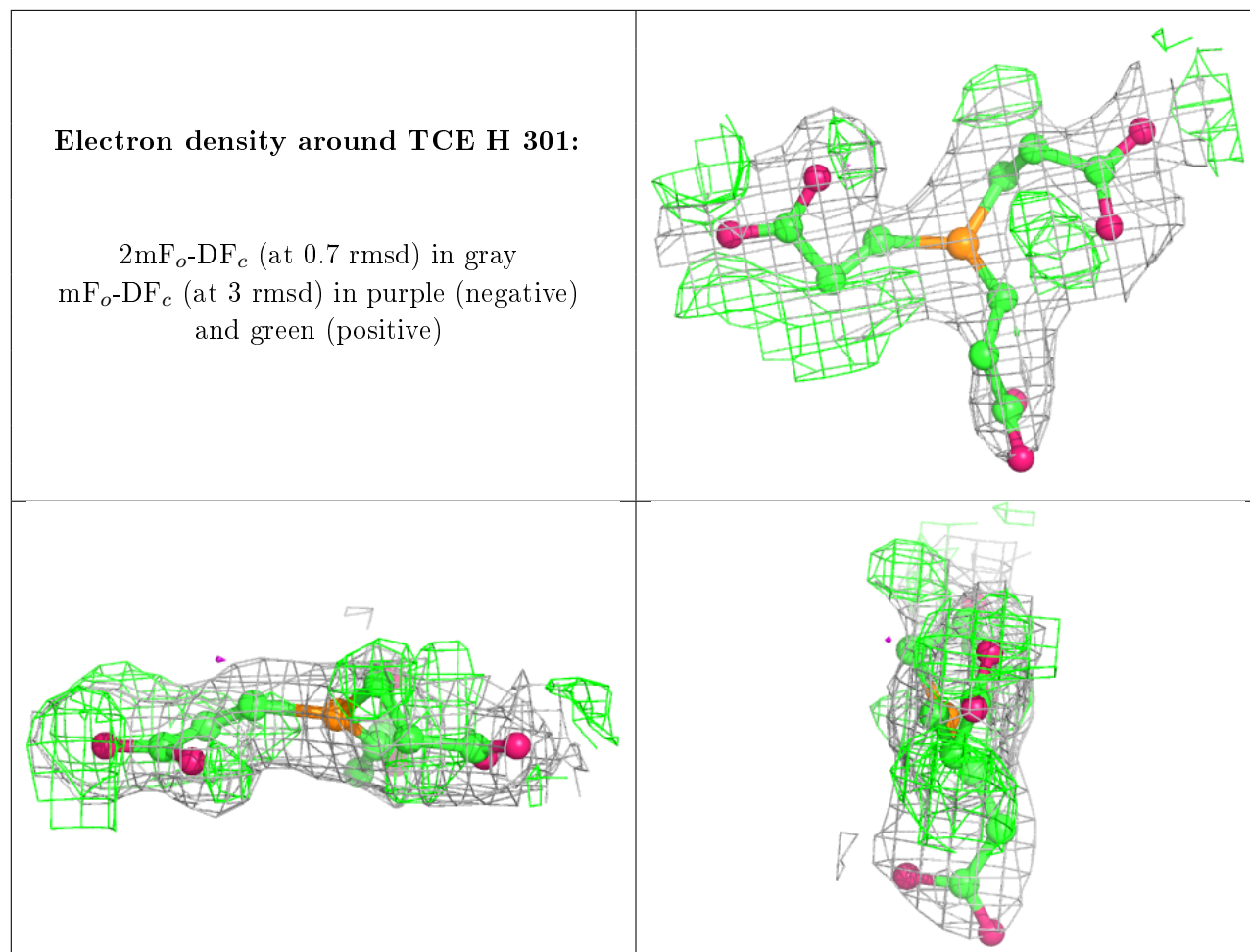
There are no carbohydrates in this entry.

### 6.4 Ligands [i](#)

In the following table, the Atoms column lists the number of modelled atoms in the group and the number defined in the chemical component dictionary. The B-factors column lists the minimum, median, 95<sup>th</sup> percentile and maximum values of B factors of atoms in the group. The column labelled ‘Q< 0.9’ lists the number of atoms with occupancy less than 0.9.

Mol	Type	Chain	Res	Atoms	RSCC	RSR	B-factors( $\text{\AA}^2$ )	Q<0.9
5	TCE	H	301	16/16	0.69	0.19	30,57,61,64	0
4	GOL	L	401	6/6	0.83	0.15	31,35,37,39	0
4	GOL	A	501	6/6	0.95	0.10	30,32,36,37	0

The following is a graphical depiction of the model fit to experimental electron density of all instances of the Ligand of Interest. In addition, ligands with molecular weight > 250 and outliers as shown on the geometry validation Tables will also be included. Each fit is shown from different orientation to approximate a three-dimensional view.



## 6.5 Other polymers [i](#)

There are no such residues in this entry.