



Full wwPDB X-ray Structure Validation Report ⓘ

May 13, 2020 – 05:53 pm BST

PDB ID : 3ATH
Title : Crystal structure of Pyrococcus horikoshii kynurenine aminotransferase in complex with four AKGs as substrates and allosteric effectors
Authors : Okada, K.; Angkawidjaja, C.; Koga, Y.; Takano, K.; Kanaya, S.
Deposited on : 2011-01-05
Resolution : 1.69 Å(reported)

This is a Full wwPDB X-ray Structure Validation Report for a publicly released PDB entry.

We welcome your comments at validation@mail.wwpdb.org

A user guide is available at

<https://www.wwpdb.org/validation/2017/XrayValidationReportHelp>

with specific help available everywhere you see the ⓘ symbol.

The following versions of software and data (see [references ⓘ](#)) were used in the production of this report:

MolProbity : 4.02b-467
Mogul : 1.8.5 (274361), CSD as541be (2020)
Xtriage (Phenix) : 1.13
EDS : 2.11
Percentile statistics : 20191225.v01 (using entries in the PDB archive December 25th 2019)
Refmac : 5.8.0158
CCP4 : 7.0.044 (Gargrove)
Ideal geometry (proteins) : Engh & Huber (2001)
Ideal geometry (DNA, RNA) : Parkinson et al. (1996)
Validation Pipeline (wwPDB-VP) : 2.11

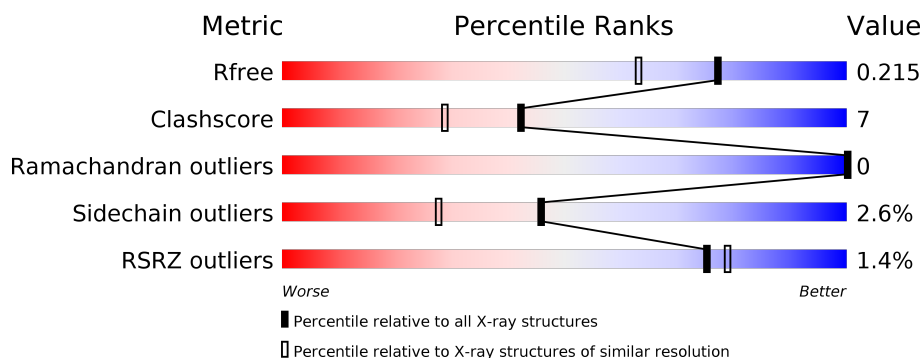
1 Overall quality at a glance

The following experimental techniques were used to determine the structure:

X-RAY DIFFRACTION

The reported resolution of this entry is 1.69 Å.

Percentile scores (ranging between 0-100) for global validation metrics of the entry are shown in the following graphic. The table shows the number of entries on which the scores are based.



Metric	Whole archive (#Entries)	Similar resolution (#Entries, resolution range(Å))
R_{free}	130704	4298 (1.70-1.70)
Clashscore	141614	4695 (1.70-1.70)
Ramachandran outliers	138981	4610 (1.70-1.70)
Sidechain outliers	138945	4610 (1.70-1.70)
RSRZ outliers	127900	4222 (1.70-1.70)

The table below summarises the geometric issues observed across the polymeric chains and their fit to the electron density. The red, orange, yellow and green segments on the lower bar indicate the fraction of residues that contain outliers for ≥ 3 , 2, 1 and 0 types of geometric quality criteria respectively. A grey segment represents the fraction of residues that are not modelled. The numeric value for each fraction is indicated below the corresponding segment, with a dot representing fractions $\leq 5\%$. The upper red bar (where present) indicates the fraction of residues that have poor fit to the electron density. The numeric value is given above the bar.

Mol	Chain	Length	Quality of chain
1	A	448	<div> <div style="width: 100%; height: 10px; background: linear-gradient(to right, red 1%, orange 1%, yellow 13%, green 76%, grey 10%);"></div> <div style="display: flex; justify-content: space-between; font-size: small;"> % 76% 13% 10% </div> </div>
1	C	448	<div> <div style="width: 100%; height: 10px; background: linear-gradient(to right, red 1%, orange 1%, yellow 13%, green 77%, grey 10%);"></div> <div style="display: flex; justify-content: space-between; font-size: small;"> % 77% 13% 10% </div> </div>

The following table lists non-polymeric compounds, carbohydrate monomers and non-standard residues in protein, DNA, RNA chains that are outliers for geometric or electron-density-fit criteria:

Mol	Type	Chain	Res	Chirality	Geometry	Clashes	Electron density
3	AKG	A	430	-	-	X	-
3	AKG	C	430	-	-	X	-

2 Entry composition

There are 4 unique types of molecules in this entry. The entry contains 7192 atoms, of which 0 are hydrogens and 0 are deuteriums.

In the tables below, the ZeroOcc column contains the number of atoms modelled with zero occupancy, the AltConf column contains the number of residues with at least one atom in alternate conformation and the Trace column contains the number of residues modelled with at most 2 atoms.

- Molecule 1 is a protein called Putative uncharacterized protein PH0207.

Mol	Chain	Residues	Atoms					ZeroOcc	AltConf	Trace
1	A	404	Total	C	N	O	S	0	0	0
			3247	2093	536	602	16			
1	C	404	Total	C	N	O	S	0	0	0
			3247	2093	536	602	16			

There are 40 discrepancies between the modelled and reference sequences:

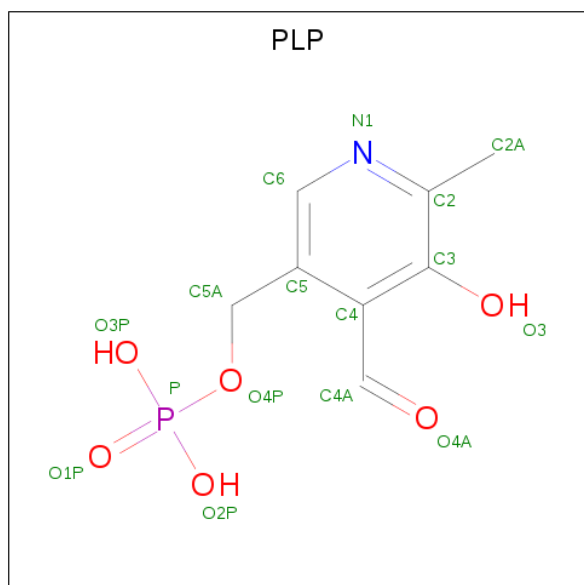
Chain	Residue	Modelled	Actual	Comment	Reference
A	-19	MET	-	EXPRESSION TAG	UNP O57946
A	-18	GLY	-	EXPRESSION TAG	UNP O57946
A	-17	SER	-	EXPRESSION TAG	UNP O57946
A	-16	SER	-	EXPRESSION TAG	UNP O57946
A	-15	HIS	-	EXPRESSION TAG	UNP O57946
A	-14	HIS	-	EXPRESSION TAG	UNP O57946
A	-13	HIS	-	EXPRESSION TAG	UNP O57946
A	-12	HIS	-	EXPRESSION TAG	UNP O57946
A	-11	HIS	-	EXPRESSION TAG	UNP O57946
A	-10	HIS	-	EXPRESSION TAG	UNP O57946
A	-9	SER	-	EXPRESSION TAG	UNP O57946
A	-8	SER	-	EXPRESSION TAG	UNP O57946
A	-7	GLY	-	EXPRESSION TAG	UNP O57946
A	-6	LEU	-	EXPRESSION TAG	UNP O57946
A	-5	VAL	-	EXPRESSION TAG	UNP O57946
A	-4	PRO	-	EXPRESSION TAG	UNP O57946
A	-3	ARG	-	EXPRESSION TAG	UNP O57946
A	-2	GLY	-	EXPRESSION TAG	UNP O57946
A	-1	SER	-	EXPRESSION TAG	UNP O57946
A	0	HIS	-	EXPRESSION TAG	UNP O57946
C	-19	MET	-	EXPRESSION TAG	UNP O57946
C	-18	GLY	-	EXPRESSION TAG	UNP O57946
C	-17	SER	-	EXPRESSION TAG	UNP O57946
C	-16	SER	-	EXPRESSION TAG	UNP O57946
C	-15	HIS	-	EXPRESSION TAG	UNP O57946

Continued on next page...

Continued from previous page...

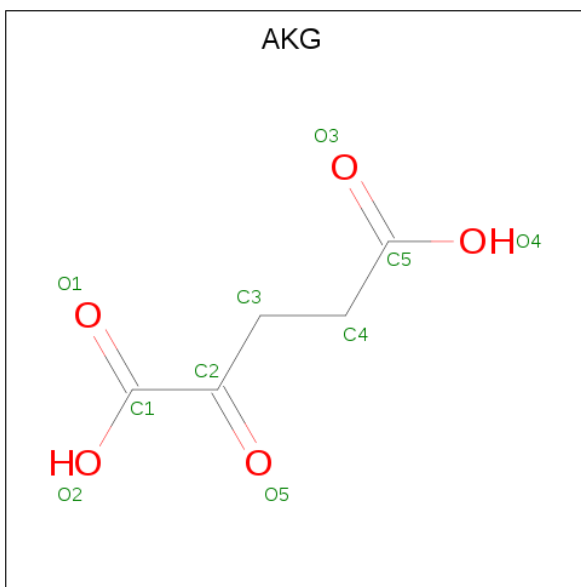
Chain	Residue	Modelled	Actual	Comment	Reference
C	-14	HIS	-	EXPRESSION TAG	UNP O57946
C	-13	HIS	-	EXPRESSION TAG	UNP O57946
C	-12	HIS	-	EXPRESSION TAG	UNP O57946
C	-11	HIS	-	EXPRESSION TAG	UNP O57946
C	-10	HIS	-	EXPRESSION TAG	UNP O57946
C	-9	SER	-	EXPRESSION TAG	UNP O57946
C	-8	SER	-	EXPRESSION TAG	UNP O57946
C	-7	GLY	-	EXPRESSION TAG	UNP O57946
C	-6	LEU	-	EXPRESSION TAG	UNP O57946
C	-5	VAL	-	EXPRESSION TAG	UNP O57946
C	-4	PRO	-	EXPRESSION TAG	UNP O57946
C	-3	ARG	-	EXPRESSION TAG	UNP O57946
C	-2	GLY	-	EXPRESSION TAG	UNP O57946
C	-1	SER	-	EXPRESSION TAG	UNP O57946
C	0	HIS	-	EXPRESSION TAG	UNP O57946

- Molecule 2 is PYRIDOXAL-5'-PHOSPHATE (three-letter code: PLP) (formula: $\text{C}_8\text{H}_{10}\text{NO}_6\text{P}$).



Mol	Chain	Residues	Atoms					ZeroOcc	AltConf
2	A	1	Total 15	C 8	N 1	O 5	P 1	0	0
2	C	1	Total 15	C 8	N 1	O 5	P 1	0	0

- Molecule 3 is 2-OXOGLUTARIC ACID (three-letter code: AKG) (formula: $C_5H_6O_5$).



Mol	Chain	Residues	Atoms			ZeroOcc	AltConf
3	A	1	Total	C	O	0	0
			10	5	5		
3	A	1	Total	C	O	0	0
			10	5	5		
3	C	1	Total	C	O	0	0
			10	5	5		
3	C	1	Total	C	O	0	0
			10	5	5		

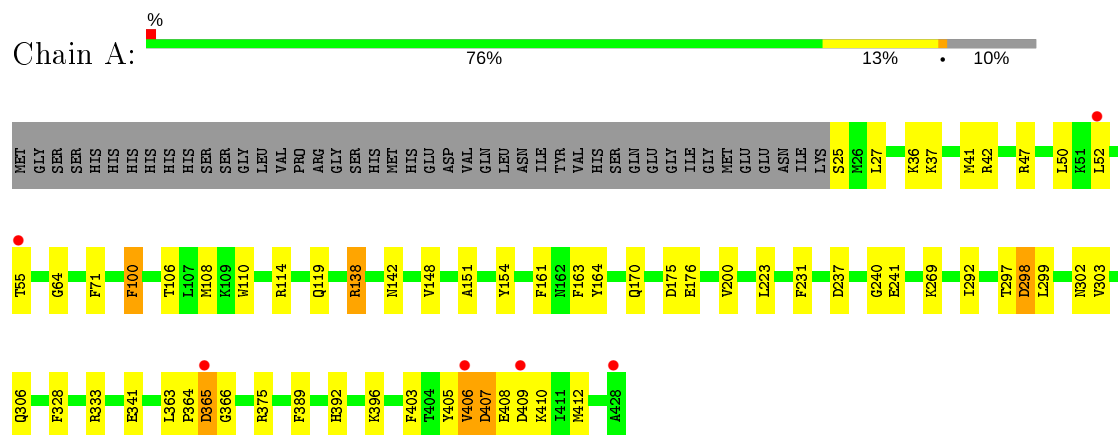
- Molecule 4 is water.

Mol	Chain	Residues	Atoms		ZeroOcc	AltConf
4	A	311	Total	O	0	0
			311	311		
4	C	317	Total	O	0	0
			317	317		

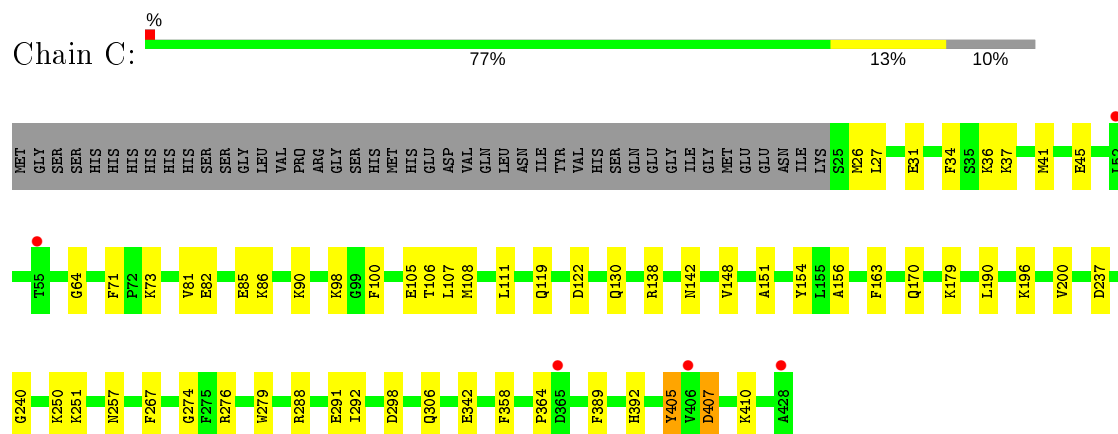
3 Residue-property plots [i](#)

These plots are drawn for all protein, RNA and DNA chains in the entry. The first graphic for a chain summarises the proportions of the various outlier classes displayed in the second graphic. The second graphic shows the sequence view annotated by issues in geometry and electron density. Residues are color-coded according to the number of geometric quality criteria for which they contain at least one outlier: green = 0, yellow = 1, orange = 2 and red = 3 or more. A red dot above a residue indicates a poor fit to the electron density ($RSRZ > 2$). Stretches of 2 or more consecutive residues without any outlier are shown as a green connector. Residues present in the sample, but not in the model, are shown in grey.

- Molecule 1: Putative uncharacterized protein PH0207



- Molecule 1: Putative uncharacterized protein PH0207



4 Data and refinement statistics

Property	Value	Source
Space group	C 1 2 1	Depositor
Cell constants a, b, c, α , β , γ	85.82Å 70.99Å 136.82Å 90.00° 90.00° 90.00°	Depositor
Resolution (Å)	27.35 – 1.69 27.35 – 1.69	Depositor EDS
% Data completeness (in resolution range)	99.2 (27.35-1.69) 99.2 (27.35-1.69)	Depositor EDS
R_{merge}	0.05	Depositor
R_{sym}	0.04	Depositor
$\langle I/\sigma(I) \rangle$ ¹	2.46 (at 1.69Å)	Xtriage
Refinement program	REFMAC 5.5.0102	Depositor
R, R_{free}	0.170 , 0.214 0.169 , 0.215	Depositor DCC
R_{free} test set	4574 reflections (5.01%)	wwPDB-VP
Wilson B-factor (Å ²)	21.7	Xtriage
Anisotropy	0.049	Xtriage
Bulk solvent k_{sol} (e/Å ³), B_{sol} (Å ²)	0.38 , 33.6	EDS
L-test for twinning ²	$\langle L \rangle = 0.50$, $\langle L^2 \rangle = 0.33$	Xtriage
Estimated twinning fraction	0.487 for -h,-k,l	Xtriage
F_o, F_c correlation	0.97	EDS
Total number of atoms	7192	wwPDB-VP
Average B, all atoms (Å ²)	25.0	wwPDB-VP

Xtriage's analysis on translational NCS is as follows: *The largest off-origin peak in the Patterson function is 4.60% of the height of the origin peak. No significant pseudotranslation is detected.*

¹Intensities estimated from amplitudes.

²Theoretical values of $\langle |L| \rangle$, $\langle L^2 \rangle$ for acentric reflections are 0.5, 0.333 respectively for untwinned datasets, and 0.375, 0.2 for perfectly twinned datasets.

5 Model quality [i](#)

5.1 Standard geometry [i](#)

Bond lengths and bond angles in the following residue types are not validated in this section: AKG, PLP

The Z score for a bond length (or angle) is the number of standard deviations the observed value is removed from the expected value. A bond length (or angle) with $|Z| > 5$ is considered an outlier worth inspection. RMSZ is the root-mean-square of all Z scores of the bond lengths (or angles).

Mol	Chain	Bond lengths		Bond angles	
		RMSZ	$\# Z > 5$	RMSZ	$\# Z > 5$
1	A	1.28	8/3313 (0.2%)	1.14	7/4463 (0.2%)
1	C	1.31	4/3313 (0.1%)	1.14	6/4463 (0.1%)
All	All	1.30	12/6626 (0.2%)	1.14	13/8926 (0.1%)

Chiral center outliers are detected by calculating the chiral volume of a chiral center and verifying if the center is modelled as a planar moiety or with the opposite hand. A planarity outlier is detected by checking planarity of atoms in a peptide group, atoms in a mainchain group or atoms of a sidechain that are expected to be planar.

Mol	Chain	#Chirality outliers	#Planarity outliers
1	A	0	1
1	C	0	1
All	All	0	2

All (12) bond length outliers are listed below:

Mol	Chain	Res	Type	Atoms	Z	Observed(Å)	Ideal(Å)
1	C	291	GLU	CD-OE2	-5.68	1.19	1.25
1	A	71	PHE	CD1-CE1	5.58	1.50	1.39
1	C	71	PHE	CD1-CE1	5.46	1.50	1.39
1	C	358	PHE	CE2-CZ	5.45	1.47	1.37
1	C	267	PHE	CE2-CZ	5.30	1.47	1.37
1	A	328	PHE	CE1-CZ	5.27	1.47	1.37
1	A	403	PHE	CE1-CZ	5.18	1.47	1.37
1	A	303	VAL	CA-CB	5.16	1.65	1.54
1	A	176	GLU	CB-CG	5.11	1.61	1.52
1	A	341	GLU	CG-CD	5.07	1.59	1.51
1	A	333	ARG	CZ-NH2	5.05	1.39	1.33
1	A	231	PHE	CE2-CZ	5.05	1.47	1.37

All (13) bond angle outliers are listed below:

Mol	Chain	Res	Type	Atoms	Z	Observed(°)	Ideal(°)
1	C	298	ASP	CB-CG-OD2	-6.00	112.90	118.30
1	C	122	ASP	CB-CG-OD1	5.99	123.69	118.30
1	A	161	PHE	CB-CG-CD2	-5.92	116.66	120.80
1	C	190	LEU	CB-CG-CD1	-5.80	101.13	111.00
1	C	196	LYS	CB-CA-C	-5.80	98.80	110.40
1	A	175	ASP	CB-CG-OD1	5.45	123.21	118.30
1	A	298	ASP	CB-CG-OD2	-5.45	113.39	118.30
1	A	100	PHE	CB-CG-CD2	-5.38	117.03	120.80
1	A	138	ARG	NE-CZ-NH2	-5.32	117.64	120.30
1	A	409	ASP	CB-CG-OD2	5.25	123.02	118.30
1	C	98	LYS	CD-CE-NZ	-5.23	99.67	111.70
1	A	364	PRO	N-CA-C	-5.15	98.72	112.10
1	C	364	PRO	N-CA-C	-5.06	98.93	112.10

There are no chirality outliers.

All (2) planarity outliers are listed below:

Mol	Chain	Res	Type	Group
1	A	405	TYR	Peptide
1	C	405	TYR	Peptide

5.2 Too-close contacts ⓘ

In the following table, the Non-H and H(model) columns list the number of non-hydrogen atoms and hydrogen atoms in the chain respectively. The H(added) column lists the number of hydrogen atoms added and optimized by MolProbity. The Clashes column lists the number of clashes within the asymmetric unit, whereas Symm-Clashes lists symmetry related clashes.

Mol	Chain	Non-H	H(model)	H(added)	Clashes	Symm-Clashes
1	A	3247	0	3306	50	0
1	C	3247	0	3306	49	0
2	A	15	0	6	2	0
2	C	15	0	6	1	0
3	A	20	0	8	7	0
3	C	20	0	8	9	0
4	A	311	0	0	12	0
4	C	317	0	0	14	0
All	All	7192	0	6640	91	0

The all-atom clashscore is defined as the number of clashes found per 1000 atoms (including hydrogen atoms). The all-atom clashscore for this structure is 7.

All (91) close contacts within the same asymmetric unit are listed below, sorted by their clash

magnitude.

Atom-1	Atom-2	Interatomic distance (Å)	Clash overlap (Å)
1:A:365:ASP:OD1	1:A:366:GLY:HA2	1.54	1.08
1:A:138:ARG:NH2	1:C:138:ARG:HH21	1.63	0.95
1:C:82:GLU:HG3	1:C:86:LYS:HE3	1.52	0.90
1:A:36:LYS:H	1:C:142:ASN:HD21	1.17	0.88
1:A:142:ASN:HD21	1:C:36:LYS:H	1.20	0.86
1:A:389:PHE:HE1	4:A:598:HOH:O	1.66	0.76
1:C:100:PHE:H	1:C:306:GLN:HE22	1.30	0.75
1:A:100:PHE:H	1:A:306:GLN:HE22	1.33	0.74
1:A:365:ASP:OD1	1:A:366:GLY:CA	2.36	0.73
1:C:106:THR:HG23	4:C:588:HOH:O	1.88	0.72
1:C:82:GLU:CG	1:C:86:LYS:HE3	2.19	0.72
1:A:396:LYS:HE3	4:A:679:HOH:O	1.89	0.71
1:A:138:ARG:NH2	1:C:138:ARG:NH2	2.39	0.70
1:C:100:PHE:H	1:C:306:GLN:NE2	1.90	0.70
1:C:81:VAL:O	1:C:85:GLU:HG2	1.92	0.69
1:A:106:THR:HG23	4:A:606:HOH:O	1.91	0.68
1:C:342:GLU:HG2	4:C:562:HOH:O	1.94	0.66
1:C:389:PHE:HE1	4:C:628:HOH:O	1.78	0.66
1:A:100:PHE:H	1:A:306:GLN:NE2	1.96	0.64
1:A:138:ARG:NH1	1:A:297:THR:HG22	2.13	0.63
1:C:82:GLU:HG3	1:C:86:LYS:CE	2.26	0.63
1:A:151:ALA:HB2	1:A:170:GLN:HB2	1.80	0.63
1:C:240:GLY:H	3:C:430:AKG:H41	1.62	0.62
1:A:240:GLY:H	3:A:430:AKG:H41	1.63	0.62
1:A:138:ARG:HH11	1:A:297:THR:CG2	2.14	0.61
1:A:237:ASP:OD2	3:A:430:AKG:H32	2.01	0.60
1:C:151:ALA:HB2	1:C:170:GLN:HB2	1.84	0.59
1:C:37:LYS:HD2	4:C:492:HOH:O	2.02	0.58
3:C:430:AKG:C3	4:C:451:HOH:O	2.51	0.57
1:C:64:GLY:HA3	3:C:431:AKG:O1	2.06	0.56
1:A:407:ASP:OD2	1:A:407:ASP:N	2.38	0.56
1:A:138:ARG:NH1	1:A:297:THR:CG2	2.71	0.54
1:A:138:ARG:HH21	1:C:138:ARG:HH21	1.52	0.53
1:A:365:ASP:CG	1:A:366:GLY:HA2	2.28	0.52
1:A:396:LYS:NZ	4:A:545:HOH:O	2.42	0.52
1:C:237:ASP:O	3:C:430:AKG:H42	2.09	0.52
1:A:41:MET:HB3	1:C:292:ILE:HG21	1.92	0.52
1:C:138:ARG:HD3	4:C:455:HOH:O	2.09	0.52
1:C:90:LYS:NZ	4:C:676:HOH:O	2.43	0.52
1:C:108:MET:HB3	1:C:119:GLN:HE22	1.74	0.51
1:C:407:ASP:N	1:C:407:ASP:OD2	2.44	0.50

Continued on next page...

Continued from previous page...

Atom-1	Atom-2	Interatomic distance (Å)	Clash overlap (Å)
3:A:430:AKG:C3	4:A:468:HOH:O	2.60	0.50
1:A:170:GLN:NE2	1:A:392:HIS:H	2.09	0.50
1:C:250:LYS:NZ	4:C:518:HOH:O	2.45	0.49
1:C:170:GLN:NE2	1:C:392:HIS:H	2.11	0.49
3:A:430:AKG:H31	4:A:468:HOH:O	2.11	0.49
3:C:430:AKG:H32	4:C:451:HOH:O	2.10	0.49
1:C:45:GLU:HG2	4:C:621:HOH:O	2.12	0.49
1:A:108:MET:HB3	1:A:119:GLN:HE22	1.77	0.48
1:C:170:GLN:HE22	1:C:392:HIS:H	1.59	0.48
1:A:170:GLN:HE22	1:A:392:HIS:H	1.62	0.48
1:A:302:ASN:HA	1:C:276:ARG:HG2	1.94	0.47
1:C:240:GLY:N	3:C:430:AKG:H41	2.29	0.47
1:A:363:LEU:O	1:A:365:ASP:N	2.48	0.47
1:A:25:SER:N	4:A:756:HOH:O	2.47	0.47
1:A:375:ARG:NH2	4:A:636:HOH:O	2.50	0.45
4:A:528:HOH:O	1:C:274:GLY:HA2	2.16	0.45
1:A:298:ASP:O	1:A:299:LEU:HB2	2.16	0.44
1:A:269:LYS:NZ	2:A:429:PLP:C5A	2.78	0.44
1:A:292:ILE:HG21	1:C:41:MET:HB3	2.00	0.44
1:A:138:ARG:HH21	1:C:138:ARG:NH2	2.10	0.44
1:A:138:ARG:HG2	1:A:164:TYR:OH	2.17	0.44
1:A:163:PHE:CE1	1:C:138:ARG:HG3	2.52	0.44
1:A:407:ASP:O	1:A:410:LYS:N	2.51	0.43
1:C:148:VAL:HB	1:C:200:VAL:HG22	2.00	0.43
1:A:154:TYR:CG	2:A:429:PLP:H2A3	2.54	0.43
1:A:299:LEU:HG	1:C:130:GLN:HB2	2.00	0.43
1:C:407:ASP:O	1:C:410:LYS:N	2.51	0.43
1:A:110:TRP:CZ2	1:A:114:ARG:HD3	2.54	0.43
1:A:138:ARG:NH2	1:C:163:PHE:CE2	2.87	0.42
1:C:279:TRP:CZ2	3:C:430:AKG:O5	2.72	0.42
1:C:41:MET:HA	4:C:766:HOH:O	2.18	0.42
1:C:73:LYS:HE3	4:C:674:HOH:O	2.19	0.42
1:A:241:GLU:HG2	3:A:430:AKG:O4	2.20	0.41
1:A:407:ASP:O	1:A:408:GLU:C	2.58	0.41
1:A:148:VAL:HB	1:A:200:VAL:HG22	2.03	0.41
1:A:241:GLU:H	3:A:430:AKG:C5	2.33	0.41
1:A:223:LEU:HA	1:A:223:LEU:HD23	1.93	0.41
1:A:406:VAL:HA	4:A:621:HOH:O	2.20	0.41
1:A:64:GLY:HA3	3:A:431:AKG:O2	2.21	0.41
1:C:179:LYS:NZ	4:C:461:HOH:O	2.50	0.41
1:C:154:TYR:CE2	1:C:156:ALA:HB3	2.56	0.41

Continued on next page...

Continued from previous page...

Atom-1	Atom-2	Interatomic distance (Å)	Clash overlap (Å)
1:C:31:GLU:HA	1:C:34:PHE:CD1	2.56	0.41
3:C:430:AKG:O4	3:C:430:AKG:O1	2.39	0.41
1:C:107:LEU:O	1:C:111:LEU:HG	2.21	0.40
1:C:279:TRP:HZ2	3:C:430:AKG:O5	2.03	0.40
1:A:36:LYS:HD3	4:A:450:HOH:O	2.20	0.40
1:C:154:TYR:CG	2:C:429:PLP:H2A3	2.57	0.40
1:C:105:GLU:OE2	4:C:698:HOH:O	2.22	0.40
1:A:163:PHE:CZ	1:C:138:ARG:HG3	2.57	0.40
1:A:41:MET:HA	4:A:561:HOH:O	2.22	0.40

There are no symmetry-related clashes.

5.3 Torsion angles [i](#)

5.3.1 Protein backbone [i](#)

In the following table, the Percentiles column shows the percent Ramachandran outliers of the chain as a percentile score with respect to all X-ray entries followed by that with respect to entries of similar resolution.

The Analysed column shows the number of residues for which the backbone conformation was analysed, and the total number of residues.

Mol	Chain	Analysed	Favoured	Allowed	Outliers	Percentiles	
1	A	402/448 (90%)	385 (96%)	17 (4%)	0	100	100
1	C	402/448 (90%)	388 (96%)	14 (4%)	0	100	100
All	All	804/896 (90%)	773 (96%)	31 (4%)	0	100	100

There are no Ramachandran outliers to report.

5.3.2 Protein sidechains [i](#)

In the following table, the Percentiles column shows the percent sidechain outliers of the chain as a percentile score with respect to all X-ray entries followed by that with respect to entries of similar resolution.

The Analysed column shows the number of residues for which the sidechain conformation was analysed, and the total number of residues.

Mol	Chain	Analysed	Rotameric	Outliers	Percentiles	
1	A	349/388 (90%)	338 (97%)	11 (3%)	39	20
1	C	349/388 (90%)	342 (98%)	7 (2%)	55	38
All	All	698/776 (90%)	680 (97%)	18 (3%)	46	28

All (18) residues with a non-rotameric sidechain are listed below:

Mol	Chain	Res	Type
1	A	27	LEU
1	A	37	LYS
1	A	42	ARG
1	A	47	ARG
1	A	50	LEU
1	A	52	LEU
1	A	55	THR
1	A	365	ASP
1	A	406	VAL
1	A	407	ASP
1	A	412	MET
1	C	26	MET
1	C	27	LEU
1	C	251	LYS
1	C	257	ASN
1	C	288	ARG
1	C	405	TYR
1	C	407	ASP

Some sidechains can be flipped to improve hydrogen bonding and reduce clashes. All (11) such sidechains are listed below:

Mol	Chain	Res	Type
1	A	119	GLN
1	A	142	ASN
1	A	170	GLN
1	A	257	ASN
1	A	306	GLN
1	A	392	HIS
1	C	119	GLN
1	C	142	ASN
1	C	170	GLN
1	C	306	GLN
1	C	392	HIS

5.3.3 RNA [i](#)

There are no RNA molecules in this entry.

5.4 Non-standard residues in protein, DNA, RNA chains [i](#)

There are no non-standard protein/DNA/RNA residues in this entry.

5.5 Carbohydrates [i](#)

There are no carbohydrates in this entry.

5.6 Ligand geometry [i](#)

6 ligands are modelled in this entry.

In the following table, the Counts columns list the number of bonds (or angles) for which Mogul statistics could be retrieved, the number of bonds (or angles) that are observed in the model and the number of bonds (or angles) that are defined in the Chemical Component Dictionary. The Link column lists molecule types, if any, to which the group is linked. The Z score for a bond length (or angle) is the number of standard deviations the observed value is removed from the expected value. A bond length (or angle) with $|Z| > 2$ is considered an outlier worth inspection. RMSZ is the root-mean-square of all Z scores of the bond lengths (or angles).

Mol	Type	Chain	Res	Link	Bond lengths			Bond angles		
					Counts	RMSZ	# Z > 2	Counts	RMSZ	# Z > 2
2	PLP	C	429	1	15,15,16	1.62	1 (6%)	20,22,23	1.20	2 (10%)
3	AKG	A	430	-	3,9,9	0.76	0	4,11,11	2.80	3 (75%)
2	PLP	A	429	1	15,15,16	1.11	2 (13%)	20,22,23	1.34	1 (5%)
3	AKG	C	430	-	3,9,9	0.85	0	4,11,11	2.48	2 (50%)
3	AKG	C	431	-	3,9,9	0.27	0	4,11,11	1.19	0
3	AKG	A	431	-	3,9,9	0.70	0	4,11,11	3.12	2 (50%)

In the following table, the Chirals column lists the number of chiral outliers, the number of chiral centers analysed, the number of these observed in the model and the number defined in the Chemical Component Dictionary. Similar counts are reported in the Torsion and Rings columns. '-' means no outliers of that kind were identified.

Mol	Type	Chain	Res	Link	Chirals	Torsions	Rings
2	PLP	C	429	1	-	0/6/6/8	0/1/1/1
3	AKG	A	430	-	-	3/3/9/9	-
2	PLP	A	429	1	-	0/6/6/8	0/1/1/1

Continued on next page...

Continued from previous page...

Mol	Type	Chain	Res	Link	Chirals	Torsions	Rings
3	AKG	C	430	-	-	3/3/9/9	-
3	AKG	C	431	-	-	3/3/9/9	-
3	AKG	A	431	-	-	1/3/9/9	-

All (3) bond length outliers are listed below:

Mol	Chain	Res	Type	Atoms	Z	Observed(Å)	Ideal(Å)
2	C	429	PLP	C3-C2	4.47	1.45	1.40
2	A	429	PLP	C6-N1	2.17	1.39	1.34
2	A	429	PLP	C3-C2	2.14	1.43	1.40

All (10) bond angle outliers are listed below:

Mol	Chain	Res	Type	Atoms	Z	Observed(°)	Ideal(°)
3	A	431	AKG	C3-C4-C5	-5.61	103.25	112.67
3	C	430	AKG	C3-C4-C5	-4.03	105.91	112.67
2	A	429	PLP	C2A-C2-C3	3.92	125.74	120.89
3	A	430	AKG	C3-C4-C5	-3.76	106.36	112.67
3	A	430	AKG	C4-C3-C2	-3.58	105.41	113.14
2	C	429	PLP	O4P-C5A-C5	2.37	113.87	109.35
3	C	430	AKG	C4-C3-C2	-2.22	108.35	113.14
3	A	431	AKG	C3-C2-C1	-2.10	116.08	121.32
2	C	429	PLP	C2A-C2-C3	2.08	123.46	120.89
3	A	430	AKG	C3-C2-C1	-2.06	116.18	121.32

There are no chirality outliers.

All (10) torsion outliers are listed below:

Mol	Chain	Res	Type	Atoms
3	A	430	AKG	O5-C2-C3-C4
3	C	430	AKG	O5-C2-C3-C4
3	A	430	AKG	C1-C2-C3-C4
3	C	430	AKG	C1-C2-C3-C4
3	C	431	AKG	C2-C3-C4-C5
3	C	431	AKG	O5-C2-C3-C4
3	A	431	AKG	C2-C3-C4-C5
3	C	431	AKG	C1-C2-C3-C4
3	A	430	AKG	C2-C3-C4-C5
3	C	430	AKG	C2-C3-C4-C5

There are no ring outliers.

6 monomers are involved in 19 short contacts:

Mol	Chain	Res	Type	Clashes	Symm-Clashes
2	C	429	PLP	1	0
3	A	430	AKG	6	0
2	A	429	PLP	2	0
3	C	430	AKG	8	0
3	C	431	AKG	1	0
3	A	431	AKG	1	0

5.7 Other polymers [i](#)

There are no such residues in this entry.

5.8 Polymer linkage issues [i](#)

There are no chain breaks in this entry.

6 Fit of model and data [i](#)

6.1 Protein, DNA and RNA chains [i](#)

In the following table, the column labelled ‘#RSRZ> 2’ contains the number (and percentage) of RSRZ outliers, followed by percent RSRZ outliers for the chain as percentile scores relative to all X-ray entries and entries of similar resolution. The OWAB column contains the minimum, median, 95th percentile and maximum values of the occupancy-weighted average B-factor per residue. The column labelled ‘Q< 0.9’ lists the number of (and percentage) of residues with an average occupancy less than 0.9.

Mol	Chain	Analysed	<RSRZ>	#RSRZ>2	OWAB(Å ²)	Q<0.9
1	A	404/448 (90%)	-0.48	6 (1%) 73 77	14, 21, 41, 61	0
1	C	404/448 (90%)	-0.48	5 (1%) 79 82	15, 21, 43, 62	0
All	All	808/896 (90%)	-0.48	11 (1%) 75 79	14, 21, 43, 62	0

All (11) RSRZ outliers are listed below:

Mol	Chain	Res	Type	RSRZ
1	A	428	ALA	5.9
1	C	428	ALA	4.3
1	A	365	ASP	3.5
1	C	365	ASP	3.1
1	A	52	LEU	3.0
1	A	55	THR	2.8
1	A	406	VAL	2.5
1	C	55	THR	2.5
1	A	409	ASP	2.4
1	C	52	LEU	2.3
1	C	406	VAL	2.1

6.2 Non-standard residues in protein, DNA, RNA chains [i](#)

There are no non-standard protein/DNA/RNA residues in this entry.

6.3 Carbohydrates [i](#)

There are no carbohydrates in this entry.

6.4 Ligands [i](#)

In the following table, the Atoms column lists the number of modelled atoms in the group and the number defined in the chemical component dictionary. The B-factors column lists the minimum, median, 95th percentile and maximum values of B factors of atoms in the group. The column labelled 'Q< 0.9' lists the number of atoms with occupancy less than 0.9.

Mol	Type	Chain	Res	Atoms	RSCC	RSR	B-factors(\AA^2)	Q<0.9
3	AKG	A	431	10/10	0.84	0.27	26,37,44,46	0
3	AKG	C	431	10/10	0.86	0.23	28,36,45,47	0
3	AKG	A	430	10/10	0.89	0.28	26,33,47,47	0
3	AKG	C	430	10/10	0.90	0.28	26,30,43,46	0
2	PLP	A	429	15/16	0.98	0.07	12,15,17,17	0
2	PLP	C	429	15/16	0.99	0.06	12,14,16,17	0

6.5 Other polymers [i](#)

There are no such residues in this entry.