



Full wwPDB X-ray Structure Validation Report ⓘ

May 17, 2020 – 05:47 am BST

PDB ID : 4AT9
Title : Crystal structure of the NF90-NF45 dimerisation domain complex with UTP
Authors : Wolkowicz, U.M.; Cook, A.G.
Deposited on : 2012-05-05
Resolution : 2.80 Å(reported)

This is a Full wwPDB X-ray Structure Validation Report for a publicly released PDB entry.

We welcome your comments at validation@mail.wwpdb.org

A user guide is available at

<https://www.wwpdb.org/validation/2017/XrayValidationReportHelp>

with specific help available everywhere you see the ⓘ symbol.

The following versions of software and data (see [references ⓘ](#)) were used in the production of this report:

MolProbity : 4.02b-467
Mogul : 1.8.5 (274361), CSD as541be (2020)
Xtriage (Phenix) : 1.13
EDS : 2.11
buster-report : 1.1.7 (2018)
Percentile statistics : 20191225.v01 (using entries in the PDB archive December 25th 2019)
Refmac : 5.8.0158
CCP4 : 7.0.044 (Gargrove)
Ideal geometry (proteins) : Engh & Huber (2001)
Ideal geometry (DNA, RNA) : Parkinson et al. (1996)
Validation Pipeline (wwPDB-VP) : 2.11

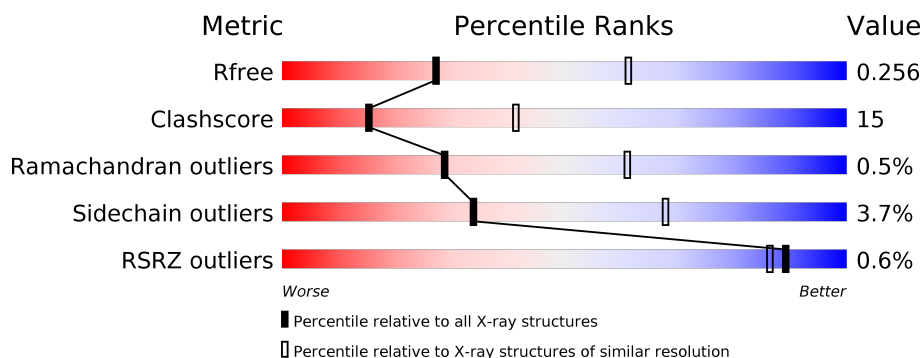
1 Overall quality at a glance

The following experimental techniques were used to determine the structure:

X-RAY DIFFRACTION

The reported resolution of this entry is 2.80 Å.

Percentile scores (ranging between 0-100) for global validation metrics of the entry are shown in the following graphic. The table shows the number of entries on which the scores are based.



Metric	Whole archive (#Entries)	Similar resolution (#Entries, resolution range(Å))
R_{free}	130704	3140 (2.80-2.80)
Clashscore	141614	3569 (2.80-2.80)
Ramachandran outliers	138981	3498 (2.80-2.80)
Sidechain outliers	138945	3500 (2.80-2.80)
RSRZ outliers	127900	3078 (2.80-2.80)

The table below summarises the geometric issues observed across the polymeric chains and their fit to the electron density. The red, orange, yellow and green segments on the lower bar indicate the fraction of residues that contain outliers for ≥ 3 , 2, 1 and 0 types of geometric quality criteria respectively. A grey segment represents the fraction of residues that are not modelled. The numeric value for each fraction is indicated below the corresponding segment, with a dot representing fractions $\leq 5\%$. The upper red bar (where present) indicates the fraction of residues that have poor fit to the electron density. The numeric value is given above the bar.

Mol	Chain	Length	Quality of chain
1	A	364	 61% 29% 9%
2	B	383	 65% 14% 20%

2 Entry composition

There are 4 unique types of molecules in this entry. The entry contains 4770 atoms, of which 0 are hydrogens and 0 are deuteriums.

In the tables below, the ZeroOcc column contains the number of atoms modelled with zero occupancy, the AltConf column contains the number of residues with at least one atom in alternate conformation and the Trace column contains the number of residues modelled with at most 2 atoms.

- Molecule 1 is a protein called INTERLEUKIN ENHANCER-BINDING FACTOR 2.

Mol	Chain	Residues	Atoms					ZeroOcc	AltConf	Trace
1	A	332	Total	C	N	O	S	0	0	0
			2474	1585	414	465	10			

There are 2 discrepancies between the modelled and reference sequences:

Chain	Residue	Modelled	Actual	Comment	Reference
A	-1	GLY	-	SEE REMARK 999	UNP Q9CXY6
A	0	SER	-	SEE REMARK 999	UNP Q9CXY6

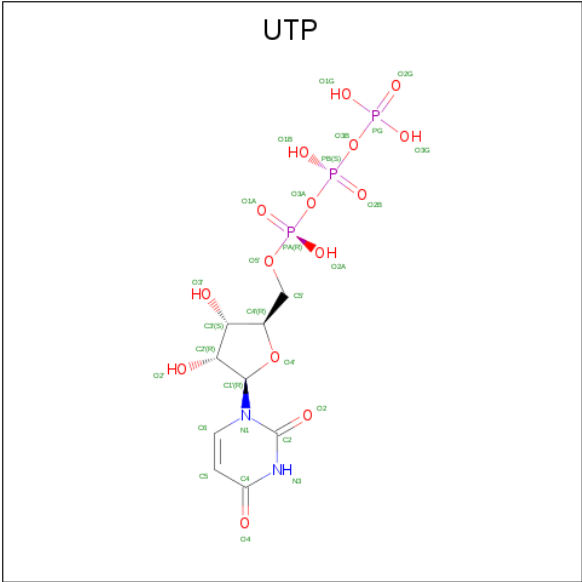
- Molecule 2 is a protein called INTERLEUKIN ENHANCER-BINDING FACTOR 3.

Mol	Chain	Residues	Atoms					ZeroOcc	AltConf	Trace
2	B	308	Total	C	N	O	S	0	0	0
			2266	1421	395	437	13			

There are 2 discrepancies between the modelled and reference sequences:

Chain	Residue	Modelled	Actual	Comment	Reference
B	-1	GLY	-	SEE REMARK 999	UNP Q45VK5
B	0	HIS	-	SEE REMARK 999	UNP Q45VK5

- Molecule 3 is URIDINE 5'-TRIPHOSPHATE (three-letter code: UTP) (formula: C₉H₁₅N₂O₁₅P₃).



Mol	Chain	Residues	Atoms					ZeroOcc	AltConf
3	A	1	Total	C	N	O	P	0	0
			29	9	2	15	3		

- Molecule 4 is MAGNESIUM ION (three-letter code: MG) (formula: Mg).

Mol	Chain	Residues	Atoms		ZeroOcc	AltConf
4	A	1	Total	Mg	0	0
			1	1		

These plots are drawn for all protein, RNA and DNA chains in the entry. The first graphic for a chain summarises the proportions of the various outlier classes displayed in the second graphic. The second graphic shows the sequence view annotated by issues in geometry and electron density. Residues are color-coded according to the number of geometric quality criteria for which they contain at least one outlier: green = 0, yellow = 1, orange = 2 and red = 3 or more. A red dot above a residue indicates a poor fit to the electron density ($RSRZ > 2$). Stretches of 2 or more consecutive residues without any outlier are shown as a green connector. Residues present in the sample, but not in the model, are shown in grey.

Chain A:

61% 29% 9%

Position	Amino Acid	Information Content (bits)
1	V351	0.25
2	G	0.25
3	P361	0.25
4	PRO	0.25
5	GLU	0.25
6	LYS	0.25
7	LYS	0.25
8	GLU	0.25
9	GLY	0.25
10	GLU	0.25
11	GLU	0.25
12	GLU	0.25
13	GLU	0.25
14	GLU	0.25
15	GLU	0.25
16	GLU	0.25
17	GLU	0.25
18	ASN	0.25
19	THR	0.25
20	GLU	0.25
21	GLU	0.25
22	GLU	0.25
23	PRO	0.25
24	PRO	0.25
25	GLN	0.25
26	GLY	0.25
27	GLU	0.25
28	GLU	0.25
29	GLU	0.25
30	GLU	0.25
31	SER	0.25
32	MET	0.25
33	GLU	0.25
34	GLU	0.25
35	THR	0.25
36	GLN	0.25
37	GLU	0.25
38	T288	0.25
39	F296	0.25
40	R297	0.25
41	V298	0.25
42	H299	0.25
43	T300	0.25
44	T303	0.25
45	Q307	0.25
46	D308	0.25
47	M309	0.25
48	V310	0.25
49	C311	0.25
50	Y312	0.25
51	Q315	0.25
52	I320	0.25
53	R327	0.25
54	Y338	0.25
55	L339	0.25
56	S344	0.25
57	T345	0.25
58	I346	0.25
59	P351	0.25
60	I232	0.25
61	R233	0.25
62	E238	0.25
63	P239	0.25
64	I247	0.25
65	N256	0.25
66	PRO	0.25
67	THR	0.25
68	R259	0.25
69	N265	0.25
70	V266	0.25
71	ALA	0.25
72	Y268	0.25
73	R269	0.25
74	R270	0.25
75	Q273	0.25
76	I274	0.25
77	L275	0.25
78	I279	0.25
79	F280	0.25
80	G283	0.25
81	S284	0.25
82	V285	0.25
83	R185	0.25
84	K186	0.25
85	L187	0.25
86	D188	0.25
87	L191	0.25
88	H192	0.25
89	I195	0.25
90	L198	0.25
91	A204	0.25
92	R209	0.25
93	E213	0.25
94	N214	0.25
95	A215	0.25
96	S216	0.25
97	Q217	0.25
98	V220	0.25
99	K221	0.25
100	I224	0.25
101	K228	0.25
102	T331	0.25
103	L135	0.25
104	L138	0.25
105	V142	0.25
106	L146	0.25
107	E145	0.25
108	V154	0.25
109	L155	0.25
110	T156	0.25
111	E165	0.25
112	I166	0.25
113	S167	0.25
114	A171	0.25
115	T172	0.25
116	V173	0.25
117	K174	0.25
118	I175	0.25
119	T178	0.25
120	T179	0.25
121	V180	0.25
122	P181	0.25
123	N183	0.25
124	L184	0.25
125	R185	0.25
126	I189	0.25
127	A91	0.25
128	P92	0.25
129	G93	0.25
130	T94	0.25
131	F95	0.25
132	E96	0.25
133	V97	0.25
134	T98	0.25
135	I99	0.25
136	E100	0.25
137	E101	0.25
138	S107	0.25
139	K110	0.25
140	M113	0.25
141	N118	0.25
142	L122</	

Chain B:

65% 14% 20%

Amino Acid	Frequency (%)
GLY	16
HIS	1
MET	1
ARG	1
PRO	1
NET	1
ARG	1
F7	1
Y22	1
E27	1
V31	1
L42	1
K43	1
G55	1
ASN	1
SER	1
GLU	1
LEU	1
SER	1
GLU	1
ALA	1
GLU	1
ASN	1
NET	1
ASP	1
THR	1
PRO	1
PRO	1
ASP	1
ASP	1
GLU	1
SER	1
LYS	1
GLY	1
GLY	1
ALA	1
GLY	1
GLU	1
GLN	1
LYS	1
ALA	1
GLU	1
HIS	1
MET	1
THR	1
R87	1
R93	1
R94	1
K105	1
L112	1
H113	1

4 Data and refinement statistics

Property	Value	Source
Space group	I 2 2 2	Depositor
Cell constants a, b, c, α , β , γ	83.85Å 133.52Å 177.98Å 90.00° 90.00° 90.00°	Depositor
Resolution (Å)	55.50 – 2.80 66.76 – 2.80	Depositor EDS
% Data completeness (in resolution range)	95.9 (55.50-2.80) 96.0 (66.76-2.80)	Depositor EDS
R_{merge}	0.13	Depositor
R_{sym}	(Not available)	Depositor
$\langle I/\sigma(I) \rangle$ ¹	2.16 (at 2.81Å)	Xtriage
Refinement program	PHENIX (PHENIX.REFINE)	Depositor
R, R_{free}	0.236 , 0.263 0.230 , 0.256	Depositor DCC
R_{free} test set	1237 reflections (5.17%)	wwPDB-VP
Wilson B-factor (Å ²)	42.9	Xtriage
Anisotropy	0.903	Xtriage
Bulk solvent k_{sol} (e/Å ³), B_{sol} (Å ²)	0.33 , 55.9	EDS
L-test for twinning ²	$\langle L \rangle = 0.47$, $\langle L^2 \rangle = 0.30$	Xtriage
Estimated twinning fraction	No twinning to report.	Xtriage
F_o, F_c correlation	0.91	EDS
Total number of atoms	4770	wwPDB-VP
Average B, all atoms (Å ²)	48.0	wwPDB-VP

Xtriage's analysis on translational NCS is as follows: *The largest off-origin peak in the Patterson function is 7.12% of the height of the origin peak. No significant pseudotranslation is detected.*

¹Intensities estimated from amplitudes.

²Theoretical values of $\langle |L| \rangle$, $\langle L^2 \rangle$ for acentric reflections are 0.5, 0.333 respectively for untwinned datasets, and 0.375, 0.2 for perfectly twinned datasets.

5 Model quality ⓘ

5.1 Standard geometry ⓘ

Bond lengths and bond angles in the following residue types are not validated in this section: UTP, MG

The Z score for a bond length (or angle) is the number of standard deviations the observed value is removed from the expected value. A bond length (or angle) with $|Z| > 5$ is considered an outlier worth inspection. RMSZ is the root-mean-square of all Z scores of the bond lengths (or angles).

Mol	Chain	Bond lengths		Bond angles	
		RMSZ	$\# Z > 5$	RMSZ	$\# Z > 5$
1	A	0.50	2/2521 (0.1%)	0.57	0/3441
2	B	0.44	0/2301	0.55	0/3136
All	All	0.47	2/4822 (0.0%)	0.56	0/6577

All (2) bond length outliers are listed below:

Mol	Chain	Res	Type	Atoms	Z	Observed(Å)	Ideal(Å)
1	A	213	GLU	CD-OE2	5.13	1.31	1.25
1	A	213	GLU	CD-OE1	5.01	1.31	1.25

There are no bond angle outliers.

There are no chirality outliers.

There are no planarity outliers.

5.2 Too-close contacts ⓘ

In the following table, the Non-H and H(model) columns list the number of non-hydrogen atoms and hydrogen atoms in the chain respectively. The H(added) column lists the number of hydrogen atoms added and optimized by MolProbity. The Clashes column lists the number of clashes within the asymmetric unit, whereas Symm-Clashes lists symmetry related clashes.

Mol	Chain	Non-H	H(model)	H(added)	Clashes	Symm-Clashes
1	A	2474	0	2413	89	0
2	B	2266	0	2157	51	0
3	A	29	0	11	5	0
4	A	1	0	0	0	0
All	All	4770	0	4581	139	0

The all-atom clashscore is defined as the number of clashes found per 1000 atoms (including

hydrogen atoms). The all-atom clashscore for this structure is 15.

All (139) close contacts within the same asymmetric unit are listed below, sorted by their clash magnitude.

Atom-1	Atom-2	Interatomic distance (Å)	Clash overlap (Å)
2:B:134:ILE:O	2:B:137:THR:HG22	1.54	1.05
1:A:204:ALA:HB2	3:A:1362:UTP:H1'	1.39	0.99
2:B:93:MET:HE2	2:B:115:LEU:HD23	1.62	0.82
1:A:29:HIS:HB3	1:A:283:GLY:O	1.81	0.81
3:A:1362:UTP:O2	3:A:1362:UTP:H5'1	1.82	0.80
2:B:93:MET:CE	2:B:115:LEU:HD23	2.15	0.77
2:B:211:ARG:NH1	2:B:295:CYS:O	2.20	0.75
2:B:193:ASP:HB2	2:B:194:PRO:CD	2.18	0.74
2:B:173:SER:O	2:B:176:VAL:HG23	1.90	0.71
1:A:311:CYS:O	1:A:315:GLN:HG3	1.90	0.71
2:B:296:GLU:HA	2:B:296:GLU:OE1	1.91	0.70
2:B:249:TRP:HB3	2:B:250:PRO:HD3	1.72	0.69
1:A:34:PHE:CE2	1:A:38:GLU:HG2	2.28	0.69
1:A:280:PHE:CD1	1:A:299:HIS:HB3	2.28	0.69
1:A:95:PHE:CE2	1:A:97:VAL:HB	2.32	0.65
2:B:42:LEU:HD11	2:B:169:ILE:HD13	1.78	0.64
1:A:110:LYS:O	1:A:221:LYS:HE2	1.97	0.64
1:A:80:LYS:NZ	1:A:153:GLU:OE1	2.32	0.62
1:A:338:TYR:CE1	1:A:339:LEU:HD12	2.34	0.62
2:B:93:MET:O	2:B:112:LEU:HD23	2.01	0.61
1:A:178:THR:HA	1:A:198:LEU:HD22	1.84	0.60
1:A:312:TYR:HA	1:A:315:GLN:HG3	1.84	0.60
2:B:134:ILE:O	2:B:137:THR:CG2	2.42	0.60
1:A:124:VAL:HG23	1:A:175:ILE:HG23	1.82	0.59
1:A:77:LEU:O	1:A:81:ILE:HD12	2.02	0.59
1:A:204:ALA:CB	3:A:1362:UTP:H1'	2.23	0.58
2:B:355:TYR:H	2:B:355:TYR:HD1	1.52	0.58
1:A:300:THR:HG22	1:A:300:THR:O	2.03	0.58
1:A:209:ARG:O	1:A:213:GLU:HB2	2.04	0.57
1:A:309:MET:HA	1:A:312:TYR:CE2	2.40	0.57
1:A:131:THR:O	1:A:135:VAL:HG23	2.04	0.57
2:B:125:LEU:HD11	2:B:155:ILE:CG1	2.35	0.57
1:A:-1:GLY:C	1:A:29:HIS:H	2.07	0.56
2:B:93:MET:HE3	2:B:115:LEU:CD2	2.35	0.56
1:A:138:LEU:O	1:A:142:VAL:HG23	2.06	0.56
1:A:187:LEU:HD23	1:A:192:HIS:HB2	1.88	0.55
2:B:93:MET:CE	2:B:115:LEU:CD2	2.84	0.55
3:A:1362:UTP:C5'	3:A:1362:UTP:O2	2.54	0.55

Continued on next page...

Continued from previous page...

Atom-1	Atom-2	Interatomic distance (Å)	Clash overlap (Å)
2:B:235:ASP:O	2:B:239:ARG:HG3	2.07	0.54
2:B:125:LEU:HD11	2:B:155:ILE:HG13	1.89	0.54
1:A:187:LEU:CD2	1:A:192:HIS:HB2	2.37	0.54
1:A:91:ALA:O	1:A:93:GLY:N	2.40	0.54
1:A:94:THR:CG2	1:A:94:THR:O	2.56	0.53
2:B:257:LYS:HZ2	2:B:291:ILE:HG23	1.74	0.53
1:A:233:ARG:HB2	1:A:233:ARG:NH1	2.24	0.53
2:B:355:TYR:N	2:B:355:TYR:CD1	2.77	0.53
2:B:94:ARG:HA	2:B:112:LEU:HD23	1.91	0.52
2:B:161:LYS:O	2:B:163:PRO:C	2.47	0.52
1:A:167:SER:HB3	1:A:172:THR:OG1	2.10	0.52
2:B:257:LYS:NZ	2:B:291:ILE:CG2	2.73	0.52
1:A:183:ASN:HA	1:A:186:LYS:HG3	1.93	0.51
1:A:85:ILE:O	1:A:89:ILE:HG13	2.11	0.51
1:A:217:GLN:O	1:A:221:LYS:HG3	2.11	0.50
2:B:152:ASP:HA	2:B:202:LYS:HE3	1.93	0.50
2:B:120:PRO:HB2	2:B:198:LEU:HD12	1.93	0.50
2:B:307:ASP:C	2:B:307:ASP:OD1	2.48	0.50
1:A:91:ALA:C	1:A:93:GLY:N	2.64	0.50
1:A:94:THR:HG23	1:A:94:THR:O	2.11	0.50
2:B:215:TRP:CH2	2:B:253:LEU:HD23	2.47	0.50
1:A:188:ASP:OD2	1:A:191:LEU:N	2.45	0.49
2:B:174:PRO:C	2:B:176:VAL:H	2.16	0.49
2:B:6:ILE:O	2:B:7:PHE:HB2	2.12	0.49
1:A:238:GLU:HB3	1:A:239:PRO:HD3	1.94	0.49
1:A:81:ILE:HG13	1:A:146:LEU:HD11	1.93	0.49
2:B:161:LYS:O	2:B:164:PRO:N	2.46	0.49
1:A:74:ILE:HG23	1:A:75:LEU:N	2.26	0.49
1:A:118:ASN:ND2	1:A:171:ALA:HB2	2.28	0.49
1:A:320:ILE:HD13	1:A:346:TRP:HE1	1.78	0.49
1:A:178:THR:HG23	1:A:179:THR:N	2.28	0.49
1:A:-1:GLY:O	1:A:29:HIS:N	2.44	0.49
1:A:224:ILE:O	1:A:228:LYS:HG3	2.13	0.48
2:B:250:PRO:HB3	2:B:303:ILE:HG22	1.94	0.48
1:A:29:HIS:O	1:A:285:VAL:HG22	2.14	0.48
2:B:174:PRO:C	2:B:176:VAL:N	2.66	0.48
1:A:346:TRP:CD1	1:A:351:VAL:HG21	2.49	0.47
1:A:308:ASP:OD1	2:B:323:ARG:HD2	2.14	0.47
1:A:34:PHE:CE2	1:A:38:GLU:CG	2.95	0.47
1:A:-1:GLY:O	1:A:285:VAL:HG13	2.14	0.47
1:A:346:TRP:HD1	1:A:351:VAL:CG2	2.27	0.47

Continued on next page...

Continued from previous page...

Atom-1	Atom-2	Interatomic distance (Å)	Clash overlap (Å)
1:A:77:LEU:O	1:A:81:ILE:CD1	2.62	0.47
1:A:74:ILE:CG2	1:A:75:LEU:N	2.78	0.47
1:A:101:GLU:HB3	1:A:125:ILE:HD12	1.96	0.46
1:A:89:ILE:HG12	1:A:99:ILE:HB	1.97	0.46
1:A:91:ALA:C	1:A:93:GLY:H	2.19	0.46
2:B:93:MET:HE3	2:B:115:LEU:HD21	1.98	0.46
1:A:36:LEU:HA	1:A:36:LEU:HD23	1.76	0.46
1:A:124:VAL:CG2	1:A:175:ILE:HG23	2.46	0.46
2:B:27:GLU:O	2:B:31:VAL:HG23	2.15	0.46
1:A:320:ILE:HD13	1:A:346:TRP:NE1	2.29	0.46
1:A:181:PRO:HA	1:A:184:LEU:HG	1.96	0.45
1:A:303:THR:O	1:A:307:GLN:HG3	2.15	0.45
1:A:288:THR:HA	1:A:296:PHE:O	2.16	0.45
1:A:31:PRO:HG2	1:A:279:LEU:HA	1.99	0.45
1:A:110:LYS:O	1:A:221:LYS:CE	2.62	0.45
1:A:188:ASP:HB3	1:A:192:HIS:CE1	2.51	0.45
1:A:215:ALA:HB1	1:A:220:VAL:HG11	1.99	0.45
1:A:273:GLN:HG2	2:B:281:SER:O	2.16	0.45
1:A:50:GLU:OE1	1:A:265:ASN:ND2	2.50	0.45
1:A:346:TRP:HD1	1:A:351:VAL:HG21	1.82	0.45
1:A:81:ILE:O	1:A:85:ILE:HG13	2.16	0.45
1:A:187:LEU:HD23	1:A:192:HIS:CB	2.47	0.44
1:A:270:ARG:O	1:A:274:ILE:HG12	2.17	0.44
1:A:122:LEU:HA	1:A:122:LEU:HD23	1.80	0.44
2:B:93:MET:O	2:B:112:LEU:CD2	2.65	0.44
2:B:174:PRO:O	2:B:176:VAL:N	2.51	0.44
2:B:22:TYR:O	2:B:105:LYS:NZ	2.46	0.44
2:B:125:LEU:HD12	2:B:155:ILE:HD11	2.00	0.44
2:B:250:PRO:HB3	2:B:303:ILE:CG2	2.48	0.44
1:A:32:PHE:CD2	2:B:278:CYS:HA	2.53	0.43
1:A:231:ARG:O	1:A:231:ARG:HG2	2.17	0.43
1:A:247:LEU:CD1	1:A:298:VAL:HG11	2.49	0.43
2:B:257:LYS:NZ	2:B:291:ILE:HG23	2.32	0.43
1:A:181:PRO:O	1:A:182:PRO:C	2.57	0.43
2:B:43:LYS:HB2	2:B:364:THR:CG2	2.48	0.43
1:A:188:ASP:OD2	1:A:191:LEU:CB	2.67	0.43
2:B:125:LEU:HD13	2:B:171:LEU:HD13	2.00	0.43
1:A:107:SER:HB2	3:A:1362:UTP:PB	2.59	0.43
1:A:99:ILE:HG23	1:A:124:VAL:HG12	2.00	0.42
1:A:165:GLU:HG2	1:A:174:LYS:HG2	2.01	0.42
2:B:132:LEU:HD21	2:B:157:ILE:HD11	2.01	0.42

Continued on next page...

Continued from previous page...

Atom-1	Atom-2	Interatomic distance (Å)	Clash overlap (Å)
1:A:187:LEU:HD11	1:A:198:LEU:HD12	2.01	0.42
2:B:240:VAL:HG12	2:B:242:THR:HB	2.02	0.42
2:B:237:CYS:HA	2:B:243:TRP:HB2	2.02	0.42
2:B:257:LYS:NZ	2:B:291:ILE:HG22	2.35	0.42
1:A:300:THR:CG2	1:A:300:THR:O	2.68	0.41
1:A:338:TYR:CZ	1:A:339:LEU:CD1	3.03	0.41
1:A:30:ILE:HG13	1:A:285:VAL:HG21	2.01	0.41
1:A:275:LEU:HD23	1:A:275:LEU:HA	1.86	0.41
2:B:7:PHE:N	2:B:7:PHE:CD1	2.89	0.41
1:A:167:SER:HB3	1:A:172:THR:HG23	2.03	0.41
1:A:232:ILE:HA	1:A:232:ILE:HD13	1.85	0.41
1:A:74:ILE:HA	1:A:74:ILE:HD12	1.86	0.40
1:A:90:VAL:C	1:A:92:PRO:HD3	2.42	0.40
2:B:112:LEU:HA	2:B:112:LEU:HD23	1.82	0.40
1:A:107:SER:OG	1:A:113:MET:HA	2.22	0.40
1:A:45:LYS:O	1:A:46:PRO:C	2.60	0.40
2:B:271:ALA:O	2:B:275:VAL:HG23	2.22	0.40
1:A:30:ILE:HG22	1:A:30:ILE:O	2.20	0.40
1:A:80:LYS:HB3	1:A:146:LEU:HD22	2.03	0.40

There are no symmetry-related clashes.

5.3 Torsion angles [i](#)

5.3.1 Protein backbone [i](#)

In the following table, the Percentiles column shows the percent Ramachandran outliers of the chain as a percentile score with respect to all X-ray entries followed by that with respect to entries of similar resolution.

The Analysed column shows the number of residues for which the backbone conformation was analysed, and the total number of residues.

Mol	Chain	Analysed	Favoured	Allowed	Outliers	Percentiles	
1	A	326/364 (90%)	306 (94%)	18 (6%)	2 (1%)	25	56
2	B	300/383 (78%)	283 (94%)	16 (5%)	1 (0%)	41	72
All	All	626/747 (84%)	589 (94%)	34 (5%)	3 (0%)	29	61

All (3) Ramachandran outliers are listed below:

Mol	Chain	Res	Type
1	A	0	SER
1	A	182	PRO
2	B	194	PRO

5.3.2 Protein sidechains ⓘ

In the following table, the Percentiles column shows the percent sidechain outliers of the chain as a percentile score with respect to all X-ray entries followed by that with respect to entries of similar resolution.

The Analysed column shows the number of residues for which the sidechain conformation was analysed, and the total number of residues.

Mol	Chain	Analysed	Rotameric	Outliers	Percentiles	
1	A	256/317 (81%)	245 (96%)	11 (4%)	29	62
2	B	227/330 (69%)	220 (97%)	7 (3%)	40	74
All	All	483/647 (75%)	465 (96%)	18 (4%)	34	68

All (18) residues with a non-rotameric sidechain are listed below:

Mol	Chain	Res	Type
1	A	71	GLN
1	A	73	SER
1	A	94	THR
1	A	100	GLU
1	A	155	LEU
1	A	156	THR
1	A	195	ILE
1	A	213	GLU
1	A	216	SER
1	A	327	ARG
1	A	344	SER
2	B	93	MET
2	B	114	LEU
2	B	115	LEU
2	B	157	ILE
2	B	166	SER
2	B	307	ASP
2	B	355	TYR

Some sidechains can be flipped to improve hydrogen bonding and reduce clashes. All (1) such sidechains are listed below:

Mol	Chain	Res	Type
2	B	52	GLN

5.3.3 RNA [i](#)

There are no RNA molecules in this entry.

5.4 Non-standard residues in protein, DNA, RNA chains [i](#)

There are no non-standard protein/DNA/RNA residues in this entry.

5.5 Carbohydrates [i](#)

There are no carbohydrates in this entry.

5.6 Ligand geometry [i](#)

Of 2 ligands modelled in this entry, 1 is monoatomic - leaving 1 for Mogul analysis.

In the following table, the Counts columns list the number of bonds (or angles) for which Mogul statistics could be retrieved, the number of bonds (or angles) that are observed in the model and the number of bonds (or angles) that are defined in the Chemical Component Dictionary. The Link column lists molecule types, if any, to which the group is linked. The Z score for a bond length (or angle) is the number of standard deviations the observed value is removed from the expected value. A bond length (or angle) with $|Z| > 2$ is considered an outlier worth inspection. RMSZ is the root-mean-square of all Z scores of the bond lengths (or angles).

Mol	Type	Chain	Res	Link	Bond lengths			Bond angles		
					Counts	RMSZ	$\# Z > 2$	Counts	RMSZ	$\# Z > 2$
3	UTP	A	1362	4	26,30,30	2.31	6 (23%)	34,47,47	2.47	8 (23%)

In the following table, the Chirals column lists the number of chiral outliers, the number of chiral centers analysed, the number of these observed in the model and the number defined in the Chemical Component Dictionary. Similar counts are reported in the Torsion and Rings columns. '-' means no outliers of that kind were identified.

Mol	Type	Chain	Res	Link	Chirals	Torsions	Rings
3	UTP	A	1362	4	-	6/22/38/38	0/2/2/2

All (6) bond length outliers are listed below:

Mol	Chain	Res	Type	Atoms	Z	Observed(Å)	Ideal(Å)
3	A	1362	UTP	C6-N1	-6.84	1.34	1.47
3	A	1362	UTP	C6-C5	-4.87	1.39	1.52
3	A	1362	UTP	C2-N1	4.79	1.42	1.35
3	A	1362	UTP	C5-C4	-3.89	1.41	1.50
3	A	1362	UTP	O3'-C3'	2.62	1.49	1.43
3	A	1362	UTP	O2'-C2'	2.10	1.47	1.43

All (8) bond angle outliers are listed below:

Mol	Chain	Res	Type	Atoms	Z	Observed(°)	Ideal(°)
3	A	1362	UTP	C4-N3-C2	-9.26	118.11	125.79
3	A	1362	UTP	C5-C4-N3	4.98	122.24	116.65
3	A	1362	UTP	N3-C2-N1	4.20	121.10	116.65
3	A	1362	UTP	PB-O3B-PG	-3.99	119.14	132.83
3	A	1362	UTP	PB-O3A-PA	-3.71	120.09	132.83
3	A	1362	UTP	C2'-C3'-C4'	2.86	108.21	102.64
3	A	1362	UTP	C5-C6-N1	2.39	119.48	111.61
3	A	1362	UTP	O2-C2-N1	-2.19	120.36	123.11

There are no chirality outliers.

All (6) torsion outliers are listed below:

Mol	Chain	Res	Type	Atoms
3	A	1362	UTP	O4'-C1'-N1-C6
3	A	1362	UTP	O4'-C1'-N1-C2
3	A	1362	UTP	PB-O3B-PG-O2G
3	A	1362	UTP	PA-O3A-PB-O2B
3	A	1362	UTP	C5'-O5'-PA-O1A
3	A	1362	UTP	O4'-C4'-C5'-O5'

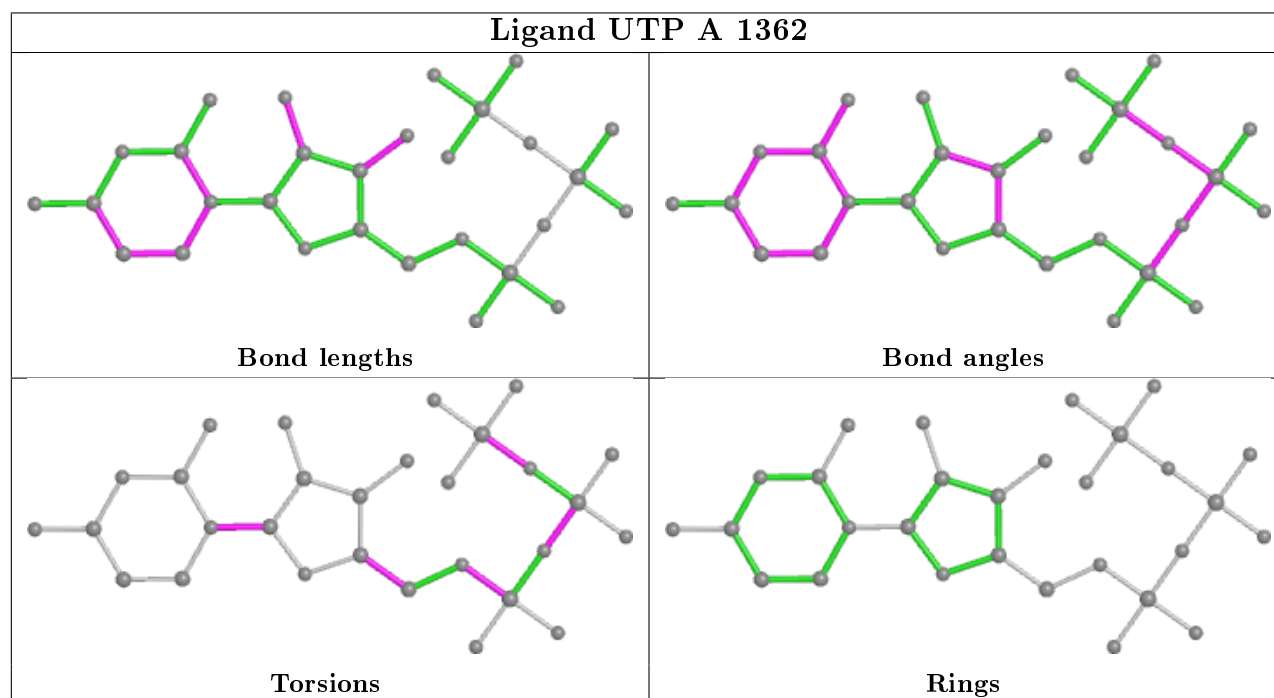
There are no ring outliers.

1 monomer is involved in 5 short contacts:

Mol	Chain	Res	Type	Clashes	Symm-Clashes
3	A	1362	UTP	5	0

The following is a two-dimensional graphical depiction of Mogul quality analysis of bond lengths, bond angles, torsion angles, and ring geometry for all instances of the Ligand of Interest. In addition, ligands with molecular weight > 250 and outliers as shown on the validation Tables will also be included. For torsion angles, if less than 5% of the Mogul distribution of torsion angles is within 10 degrees of the torsion angle in question, then that torsion angle is considered an outlier. Any bond that is central to one or more torsion angles identified as an outlier by Mogul will be

highlighted in the graph. For rings, the root-mean-square deviation (RMSD) between the ring in question and similar rings identified by Mogul is calculated over all ring torsion angles. If the average RMSD is greater than 60 degrees and the minimal RMSD between the ring in question and any Mogul-identified rings is also greater than 60 degrees, then that ring is considered an outlier. The outliers are highlighted in purple. The color gray indicates Mogul did not find sufficient equivalents in the CSD to analyse the geometry.



5.7 Other polymers [i](#)

There are no such residues in this entry.

5.8 Polymer linkage issues [i](#)

There are no chain breaks in this entry.

6 Fit of model and data [i](#)

6.1 Protein, DNA and RNA chains [i](#)

In the following table, the column labelled ‘#RSRZ> 2’ contains the number (and percentage) of RSRZ outliers, followed by percent RSRZ outliers for the chain as percentile scores relative to all X-ray entries and entries of similar resolution. The OWAB column contains the minimum, median, 95th percentile and maximum values of the occupancy-weighted average B-factor per residue. The column labelled ‘Q< 0.9’ lists the number of (and percentage) of residues with an average occupancy less than 0.9.

Mol	Chain	Analysed	<RSRZ>	#RSRZ>2	OWAB(Å ²)	Q<0.9
1	A	332/364 (91%)	-0.03	1 (0%) 94 93	20, 43, 82, 122	0
2	B	308/383 (80%)	0.02	3 (0%) 82 77	22, 47, 84, 110	0
All	All	640/747 (85%)	-0.00	4 (0%) 89 86	20, 45, 84, 122	0

All (4) RSRZ outliers are listed below:

Mol	Chain	Res	Type	RSRZ
2	B	355	TYR	4.6
2	B	6	ILE	4.5
2	B	353	VAL	2.5
1	A	187	LEU	2.1

6.2 Non-standard residues in protein, DNA, RNA chains [i](#)

There are no non-standard protein/DNA/RNA residues in this entry.

6.3 Carbohydrates [i](#)

There are no carbohydrates in this entry.

6.4 Ligands [i](#)

In the following table, the Atoms column lists the number of modelled atoms in the group and the number defined in the chemical component dictionary. The B-factors column lists the minimum, median, 95th percentile and maximum values of B factors of atoms in the group. The column labelled ‘Q< 0.9’ lists the number of atoms with occupancy less than 0.9.

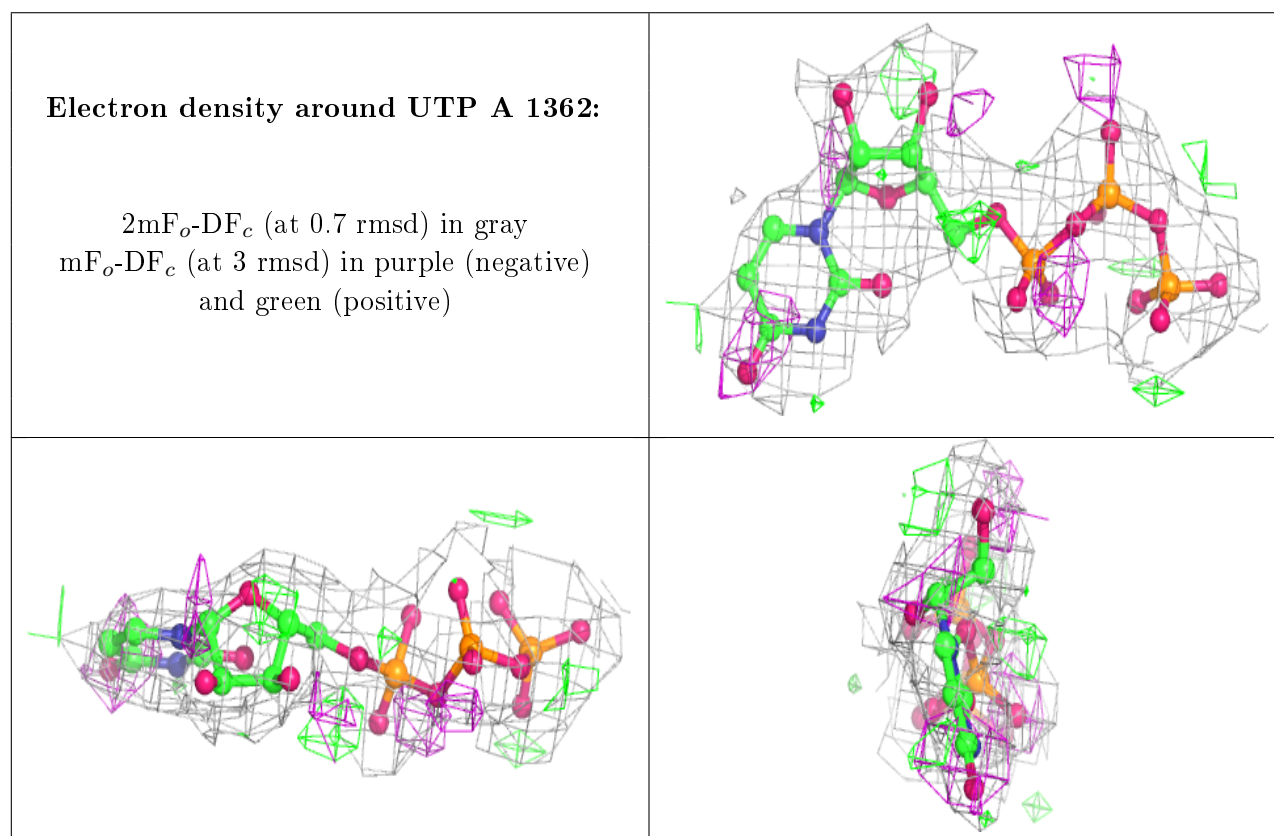
Mol	Type	Chain	Res	Atoms	RSCC	RSR	B-factors(Å ²)	Q<0.9
4	MG	A	1363	1/1	0.88	0.15	49,49,49,49	0

Continued on next page...

Continued from previous page...

Mol	Type	Chain	Res	Atoms	RSCC	RSR	B-factors(\AA^2)	Q<0.9
3	UTP	A	1362	29/29	0.93	0.15	30,30,30,30	0

The following is a graphical depiction of the model fit to experimental electron density of all instances of the Ligand of Interest. In addition, ligands with molecular weight > 250 and outliers as shown on the geometry validation Tables will also be included. Each fit is shown from different orientation to approximate a three-dimensional view.



6.5 Other polymers [i](#)

There are no such residues in this entry.