



Full wwPDB X-ray Structure Validation Report ⓘ

May 24, 2020 – 11:24 pm BST

PDB ID : 6AWH
Title : Staphylococcus aureus Type II pantothenate kinase in complex with ATP and pantothenate analog Deoxy-MeO-N5Pan
Authors : Chen, Y.; Antoshchenko, T.; Strauss, E.; Barnard, L.; Huang, Y.H.
Deposited on : 2017-09-05
Resolution : 1.90 Å(reported)

This is a Full wwPDB X-ray Structure Validation Report for a publicly released PDB entry.

We welcome your comments at validation@mail.wwpdb.org

A user guide is available at

<https://www.wwpdb.org/validation/2017/XrayValidationReportHelp>

with specific help available everywhere you see the ⓘ symbol.

The following versions of software and data (see [references ⓘ](#)) were used in the production of this report:

MolProbity	:	4.02b-467
Mogul	:	1.8.5 (274361), CSD as541be (2020)
Xtriage (Phenix)	:	1.13
EDS	:	2.11
buster-report	:	1.1.7 (2018)
Percentile statistics	:	20191225.v01 (using entries in the PDB archive December 25th 2019)
Refmac	:	5.8.0158
CCP4	:	7.0.044 (Gargrove)
Ideal geometry (proteins)	:	Engh & Huber (2001)
Ideal geometry (DNA, RNA)	:	Parkinson et al. (1996)
Validation Pipeline (wwPDB-VP)	:	2.11

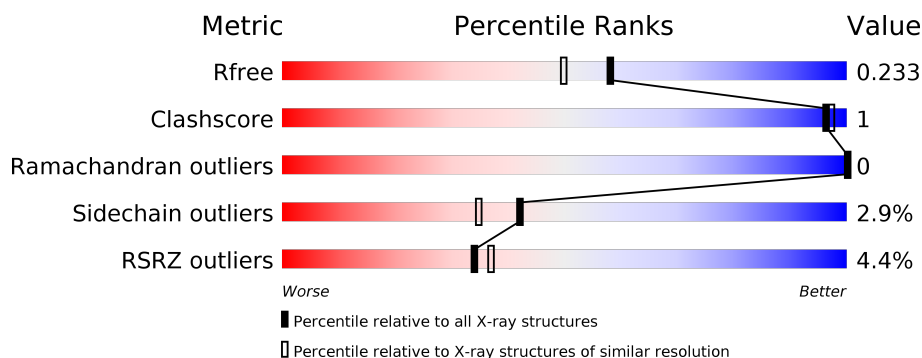
1 Overall quality at a glance

The following experimental techniques were used to determine the structure:

X-RAY DIFFRACTION

The reported resolution of this entry is 1.90 Å.

Percentile scores (ranging between 0-100) for global validation metrics of the entry are shown in the following graphic. The table shows the number of entries on which the scores are based.



Metric	Whole archive (#Entries)	Similar resolution (#Entries, resolution range(Å))
R_{free}	130704	6207 (1.90-1.90)
Clashscore	141614	6847 (1.90-1.90)
Ramachandran outliers	138981	6760 (1.90-1.90)
Sidechain outliers	138945	6760 (1.90-1.90)
RSRZ outliers	127900	6082 (1.90-1.90)

The table below summarises the geometric issues observed across the polymeric chains and their fit to the electron density. The red, orange, yellow and green segments on the lower bar indicate the fraction of residues that contain outliers for ≥ 3 , 2, 1 and 0 types of geometric quality criteria respectively. A grey segment represents the fraction of residues that are not modelled. The numeric value for each fraction is indicated below the corresponding segment, with a dot representing fractions $\leq 5\%$. The upper red bar (where present) indicates the fraction of residues that have poor fit to the electron density. The numeric value is given above the bar.

Mol	Chain	Length	Quality of chain
1	A	266	<div> <div>2%</div> <div> <div></div> <div>95%</div> <div>5%</div> </div> </div>
1	B	266	<div> <div>2%</div> <div> <div></div> <div>94%</div> <div>6%</div> </div> </div>
1	C	266	<div> <div>3%</div> <div> <div></div> <div>96%</div> <div></div> </div> </div>
1	D	266	<div> <div>11%</div> <div> <div></div> <div>96%</div> <div></div> </div> </div>

2 Entry composition [i](#)

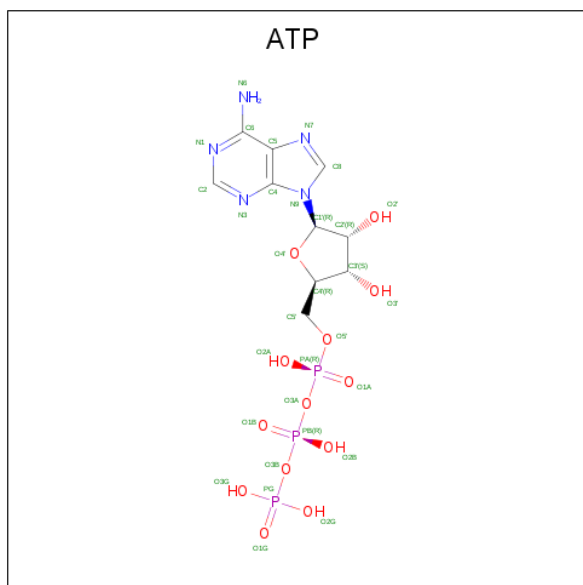
There are 5 unique types of molecules in this entry. The entry contains 8978 atoms, of which 0 are hydrogens and 0 are deuteriums.

In the tables below, the ZeroOcc column contains the number of atoms modelled with zero occupancy, the AltConf column contains the number of residues with at least one atom in alternate conformation and the Trace column contains the number of residues modelled with at most 2 atoms.

- Molecule 1 is a protein called Type II pantothenate kinase.

Mol	Chain	Residues	Atoms					ZeroOcc	AltConf	Trace
1	A	266	Total	C	N	O	S	0	0	0
			2041	1292	350	393	6			
1	B	264	Total	C	N	O	S	0	0	0
			2024	1283	347	388	6			
1	C	265	Total	C	N	O	S	0	0	0
			2032	1287	349	390	6			
1	D	264	Total	C	N	O	S	0	1	0
			2034	1289	350	389	6			

- Molecule 2 is ADENOSINE-5'-TRIPHOSPHATE (three-letter code: ATP) (formula: $C_{10}H_{16}N_5O_{13}P_3$).



Mol	Chain	Residues	Atoms					ZeroOcc	AltConf
2	A	1	Total	C	N	O	P	0	0
			31	10	5	13	3		
2	B	1	Total	C	N	O	P	0	0
			31	10	5	13	3		

Continued on next page...

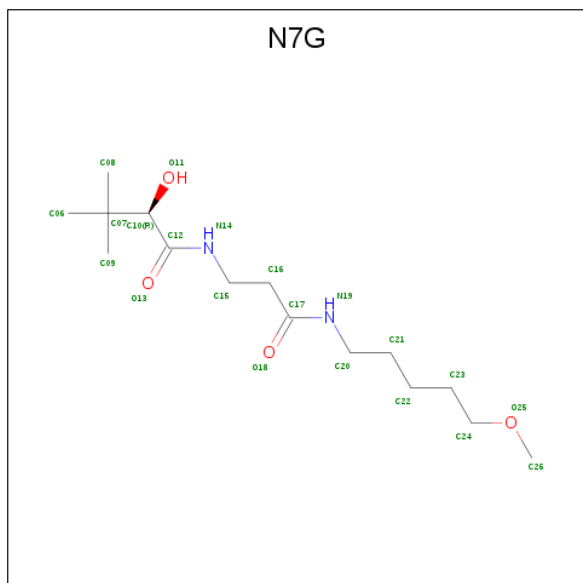
Continued from previous page...

Mol	Chain	Residues	Atoms					ZeroOcc	AltConf
2	C	1	Total	C	N	O	P	0	0
			31	10	5	13	3		
2	D	1	Total	C	N	O	P	0	0
			31	10	5	13	3		

- Molecule 3 is MAGNESIUM ION (three-letter code: MG) (formula: Mg).

Mol	Chain	Residues	Atoms		ZeroOcc	AltConf
3	B	1	Total	Mg	0	0
			1	1		
3	A	1	Total	Mg	0	0
			1	1		
3	D	1	Total	Mg	0	0
			1	1		
3	C	1	Total	Mg	0	0
			1	1		

- Molecule 4 is (2R)-2-hydroxy-N-{3-[(5-methoxypentyl)amino]-3-oxopropyl}-3,3-dimethylbutanamide (three-letter code: N7G) (formula: C₁₅H₃₀N₂O₄) (labeled as "Ligand of Interest" by author).



Mol	Chain	Residues	Atoms				ZeroOcc	AltConf
4	B	1	Total	C	N	O	0	0
			21	15	2	4		
4	B	1	Total	C	N	O	0	0
			21	15	2	4		

Continued on next page...

Continued from previous page...

Mol	Chain	Residues	Atoms				ZeroOcc	AltConf
4	D	1	Total	C	N	O	0	0
			21	15	2	4		
4	D	1	Total	C	N	O	0	0
			21	15	2	4		

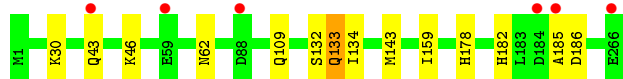
- Molecule 5 is water.

Mol	Chain	Residues	Atoms		ZeroOcc	AltConf
5	A	153	Total	O	0	0
			153	153		
5	B	177	Total	O	0	0
			177	177		
5	C	164	Total	O	0	0
			164	164		
5	D	141	Total	O	0	0
			141	141		

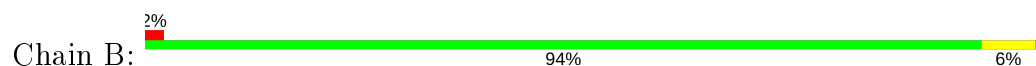
3 Residue-property plots [i](#)

These plots are drawn for all protein, RNA and DNA chains in the entry. The first graphic for a chain summarises the proportions of the various outlier classes displayed in the second graphic. The second graphic shows the sequence view annotated by issues in geometry and electron density. Residues are color-coded according to the number of geometric quality criteria for which they contain at least one outlier: green = 0, yellow = 1, orange = 2 and red = 3 or more. A red dot above a residue indicates a poor fit to the electron density ($RSRZ > 2$). Stretches of 2 or more consecutive residues without any outlier are shown as a green connector. Residues present in the sample, but not in the model, are shown in grey.

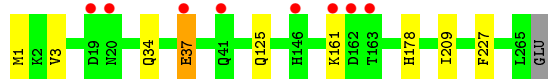
- Molecule 1: Type II pantothenate kinase



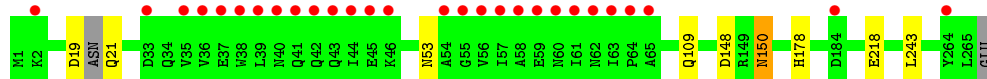
- Molecule 1: Type II pantothenate kinase



- Molecule 1: Type II pantothenate kinase



- Molecule 1: Type II pantothenate kinase



4 Data and refinement statistics

Property	Value	Source
Space group	P 21 21 21	Depositor
Cell constants a, b, c, α , β , γ	56.78 Å 136.67 Å 141.39 Å 90.00° 90.00° 90.00°	Depositor
Resolution (Å)	98.27 – 1.90 44.56 – 1.90	Depositor EDS
% Data completeness (in resolution range)	99.2 (98.27-1.90) 99.2 (44.56-1.90)	Depositor EDS
R_{merge}	(Not available)	Depositor
R_{sym}	(Not available)	Depositor
$\langle I/\sigma(I) \rangle$ ¹	1.32 (at 1.89 Å)	Xtriage
Refinement program	REFMAC 5.8.0103	Depositor
R, R_{free}	0.195 , 0.226 0.203 , 0.233	Depositor DCC
R_{free} test set	4363 reflections (5.01%)	wwPDB-VP
Wilson B-factor (Å ²)	23.0	Xtriage
Anisotropy	0.628	Xtriage
Bulk solvent k_{sol} (e/Å ³), B_{sol} (Å ²)	0.36 , 39.8	EDS
L-test for twinning ²	$\langle L \rangle = 0.49$, $\langle L^2 \rangle = 0.32$	Xtriage
Estimated twinning fraction	0.000 for -h,l,k	Xtriage
F_o, F_c correlation	0.96	EDS
Total number of atoms	8978	wwPDB-VP
Average B, all atoms (Å ²)	29.0	wwPDB-VP

Xtriage's analysis on translational NCS is as follows: *The analyses of the Patterson function reveals a significant off-origin peak that is 44.04 % of the origin peak, indicating pseudo-translational symmetry. The chance of finding a peak of this or larger height randomly in a structure without pseudo-translational symmetry is equal to 1.6168e-04. The detected translational NCS is most likely also responsible for the elevated intensity ratio.*

¹ Intensities estimated from amplitudes.

² Theoretical values of $\langle |L| \rangle$, $\langle L^2 \rangle$ for acentric reflections are 0.5, 0.333 respectively for untwinned datasets, and 0.375, 0.2 for perfectly twinned datasets.

5 Model quality [i](#)

5.1 Standard geometry [i](#)

Bond lengths and bond angles in the following residue types are not validated in this section: MG, N7G, ATP

The Z score for a bond length (or angle) is the number of standard deviations the observed value is removed from the expected value. A bond length (or angle) with $|Z| > 5$ is considered an outlier worth inspection. RMSZ is the root-mean-square of all Z scores of the bond lengths (or angles).

Mol	Chain	Bond lengths		Bond angles	
		RMSZ	$\# Z > 5$	RMSZ	$\# Z > 5$
1	A	0.60	0/2076	0.74	0/2813
1	B	0.61	0/2058	0.73	0/2787
1	C	0.59	0/2067	0.72	0/2801
1	D	0.57	0/2069	0.71	0/2802
All	All	0.59	0/8270	0.73	0/11203

There are no bond length outliers.

There are no bond angle outliers.

There are no chirality outliers.

There are no planarity outliers.

5.2 Too-close contacts [i](#)

In the following table, the Non-H and H(model) columns list the number of non-hydrogen atoms and hydrogen atoms in the chain respectively. The H(added) column lists the number of hydrogen atoms added and optimized by MolProbity. The Clashes column lists the number of clashes within the asymmetric unit, whereas Symm-Clashes lists symmetry related clashes.

Mol	Chain	Non-H	H(model)	H(added)	Clashes	Symm-Clashes
1	A	2041	0	2027	6	0
1	B	2024	0	2014	6	0
1	C	2032	0	2021	4	0
1	D	2034	0	2020	2	0
2	A	31	0	12	0	0
2	B	31	0	12	0	0
2	C	31	0	12	0	0
2	D	31	0	12	0	0
3	A	1	0	0	0	0

Continued on next page...

Continued from previous page...

Mol	Chain	Non-H	H(model)	H(added)	Clashes	Symm-Clashes
3	B	1	0	0	0	0
3	C	1	0	0	0	0
3	D	1	0	0	0	0
4	B	42	0	0	0	0
4	D	42	0	0	0	0
5	A	153	0	0	0	0
5	B	177	0	0	1	0
5	C	164	0	0	2	0
5	D	141	0	0	0	0
All	All	8978	0	8130	16	0

The all-atom clashscore is defined as the number of clashes found per 1000 atoms (including hydrogen atoms). The all-atom clashscore for this structure is 1.

All (16) close contacts within the same asymmetric unit are listed below, sorted by their clash magnitude.

Atom-1	Atom-2	Interatomic distance (Å)	Clash overlap (Å)
1:C:227:PHE:HB2	5:C:401:HOH:O	1.86	0.74
1:A:182:HIS:HB3	1:A:185:ALA:HB3	1.73	0.69
1:A:132:SER:O	1:A:133:GLN:HG2	2.07	0.53
1:A:159:ILE:HG22	1:B:52:GLY:HA3	1.93	0.51
1:B:2:LYS:HG2	1:B:46:LYS:HB3	1.95	0.49
1:D:148:ASP:OD1	1:D:150:ASN:HB2	2.13	0.49
1:C:34:GLN:O	1:C:37:GLU:HG3	2.14	0.47
1:C:125:GLN:NE2	5:C:404:HOH:O	2.48	0.46
1:B:228:HIS:HE1	5:B:493:HOH:O	1.98	0.45
1:B:44:ILE:HG21	1:B:47:LEU:HB2	1.98	0.45
1:B:19:ASP:HB2	1:B:21:GLN:N	2.32	0.44
1:C:161:LYS:HE2	1:D:53:ASN:OD1	2.18	0.44
1:A:134:ILE:HD11	1:A:143:MET:SD	2.60	0.42
1:A:132:SER:C	1:A:133:GLN:HG2	2.41	0.41
1:A:134:ILE:CD1	1:A:143:MET:SD	3.09	0.41
1:B:77:GLY:HA3	1:B:257:SER:O	2.21	0.40

There are no symmetry-related clashes.

5.3 Torsion angles [i](#)

5.3.1 Protein backbone [i](#)

In the following table, the Percentiles column shows the percent Ramachandran outliers of the chain as a percentile score with respect to all X-ray entries followed by that with respect to entries of similar resolution.

The Analysed column shows the number of residues for which the backbone conformation was analysed, and the total number of residues.

Mol	Chain	Analysed	Favoured	Allowed	Outliers	Percentiles	
1	A	264/266 (99%)	259 (98%)	5 (2%)	0	100	100
1	B	260/266 (98%)	257 (99%)	3 (1%)	0	100	100
1	C	263/266 (99%)	259 (98%)	4 (2%)	0	100	100
1	D	261/266 (98%)	257 (98%)	4 (2%)	0	100	100
All	All	1048/1064 (98%)	1032 (98%)	16 (2%)	0	100	100

There are no Ramachandran outliers to report.

5.3.2 Protein sidechains [i](#)

In the following table, the Percentiles column shows the percent sidechain outliers of the chain as a percentile score with respect to all X-ray entries followed by that with respect to entries of similar resolution.

The Analysed column shows the number of residues for which the sidechain conformation was analysed, and the total number of residues.

Mol	Chain	Analysed	Rotameric	Outliers	Percentiles	
1	A	216/216 (100%)	208 (96%)	8 (4%)	34	25
1	B	214/216 (99%)	209 (98%)	5 (2%)	50	45
1	C	215/216 (100%)	210 (98%)	5 (2%)	50	45
1	D	215/216 (100%)	208 (97%)	7 (3%)	38	29
All	All	860/864 (100%)	835 (97%)	25 (3%)	42	35

All (25) residues with a non-rotameric sidechain are listed below:

Mol	Chain	Res	Type
1	A	30	LYS
1	A	43	GLN

Continued on next page...

Continued from previous page...

Mol	Chain	Res	Type
1	A	46	LYS
1	A	62	ASN
1	A	109	GLN
1	A	133	GLN
1	A	178	HIS
1	A	186	ASP
1	B	25	LYS
1	B	27	GLU
1	B	109	GLN
1	B	178	HIS
1	B	243	LEU
1	C	1	MET
1	C	3	VAL
1	C	37	GLU
1	C	178	HIS
1	C	209	ILE
1	D	19	ASP
1	D	21	GLN
1	D	109	GLN
1	D	150	ASN
1	D	178	HIS
1	D	218	GLU
1	D	243	LEU

Some sidechains can be flipped to improve hydrogen bonding and reduce clashes. All (14) such sidechains are listed below:

Mol	Chain	Res	Type
1	A	62	ASN
1	A	76	GLN
1	A	125	GLN
1	A	133	GLN
1	A	146	HIS
1	A	228	HIS
1	B	109	GLN
1	B	133	GLN
1	B	146	HIS
1	B	228	HIS
1	C	41	GLN
1	C	42	GLN
1	C	125	GLN
1	D	146	HIS

5.3.3 RNA [i](#)

There are no RNA molecules in this entry.

5.4 Non-standard residues in protein, DNA, RNA chains [i](#)

There are no non-standard protein/DNA/RNA residues in this entry.

5.5 Carbohydrates [i](#)

There are no carbohydrates in this entry.

5.6 Ligand geometry [i](#)

Of 12 ligands modelled in this entry, 4 are monoatomic - leaving 8 for Mogul analysis.

In the following table, the Counts columns list the number of bonds (or angles) for which Mogul statistics could be retrieved, the number of bonds (or angles) that are observed in the model and the number of bonds (or angles) that are defined in the Chemical Component Dictionary. The Link column lists molecule types, if any, to which the group is linked. The Z score for a bond length (or angle) is the number of standard deviations the observed value is removed from the expected value. A bond length (or angle) with $|Z| > 2$ is considered an outlier worth inspection. RMSZ is the root-mean-square of all Z scores of the bond lengths (or angles).

Mol	Type	Chain	Res	Link	Bond lengths			Bond angles		
					Counts	RMSZ	# $ Z > 2$	Counts	RMSZ	# $ Z > 2$
2	ATP	D	301	3	26,33,33	0.98	2 (7%)	31,52,52	1.26	4 (12%)
4	N7G	B	303	-	19,20,20	1.14	2 (10%)	24,25,25	0.73	0
2	ATP	A	301	3	26,33,33	0.93	3 (11%)	31,52,52	1.36	4 (12%)
4	N7G	D	302	-	19,20,20	1.18	1 (5%)	24,25,25	0.94	1 (4%)
2	ATP	C	301	3	26,33,33	0.90	1 (3%)	31,52,52	1.23	3 (9%)
4	N7G	B	302	-	19,20,20	0.70	1 (5%)	24,25,25	1.28	2 (8%)
4	N7G	D	303	-	19,20,20	0.91	1 (5%)	24,25,25	0.94	1 (4%)
2	ATP	B	301	3	26,33,33	1.00	1 (3%)	31,52,52	1.21	3 (9%)

In the following table, the Chirals column lists the number of chiral outliers, the number of chiral centers analysed, the number of these observed in the model and the number defined in the Chemical Component Dictionary. Similar counts are reported in the Torsion and Rings columns. '-' means no outliers of that kind were identified.

Mol	Type	Chain	Res	Link	Chirals	Torsions	Rings
2	ATP	D	301	3	-	3/18/38/38	0/3/3/3
4	N7G	B	303	-	-	2/24/24/24	-
2	ATP	A	301	3	-	1/18/38/38	0/3/3/3
4	N7G	D	302	-	-	2/24/24/24	-
2	ATP	C	301	3	-	1/18/38/38	0/3/3/3
4	N7G	B	302	-	-	2/24/24/24	-
4	N7G	D	303	-	-	2/24/24/24	-
2	ATP	B	301	3	-	2/18/38/38	0/3/3/3

All (12) bond length outliers are listed below:

Mol	Chain	Res	Type	Atoms	Z	Observed(Å)	Ideal(Å)
4	D	302	N7G	C07-C10	4.18	1.58	1.55
4	B	303	N7G	C07-C10	3.14	1.57	1.55
4	D	303	N7G	C07-C10	2.78	1.57	1.55
2	B	301	ATP	C5-C4	2.72	1.48	1.40
2	D	301	ATP	C5-C4	2.60	1.47	1.40
4	B	303	N7G	O11-C10	2.56	1.47	1.42
2	C	301	ATP	C2-N3	2.21	1.35	1.32
2	A	301	ATP	C5-N7	-2.16	1.31	1.39
4	B	302	N7G	O11-C10	2.14	1.46	1.42
2	D	301	ATP	C2-N3	2.12	1.35	1.32
2	A	301	ATP	O4'-C1'	2.08	1.44	1.41
2	A	301	ATP	C5-C4	2.07	1.46	1.40

All (18) bond angle outliers are listed below:

Mol	Chain	Res	Type	Atoms	Z	Observed(°)	Ideal(°)
2	A	301	ATP	N3-C2-N1	-4.59	121.50	128.68
2	C	301	ATP	N3-C2-N1	-3.79	122.75	128.68
2	D	301	ATP	N3-C2-N1	-3.72	122.87	128.68
2	B	301	ATP	N3-C2-N1	-3.32	123.49	128.68
4	B	302	N7G	C15-C16-C17	-3.20	107.03	112.36
4	B	302	N7G	C20-N19-C17	-3.07	117.14	122.84
4	D	302	N7G	C20-N19-C17	-2.79	117.65	122.84
2	A	301	ATP	O3G-PG-O2G	2.77	118.23	107.64
2	C	301	ATP	N6-C6-N1	2.48	123.72	118.57
2	D	301	ATP	O3G-PG-O2G	2.35	116.61	107.64
2	B	301	ATP	N6-C6-N1	2.24	123.22	118.57
2	C	301	ATP	O2G-PG-O1G	2.19	119.26	110.68
2	A	301	ATP	C2-N1-C6	2.18	122.49	118.75
2	B	301	ATP	C2-N1-C6	2.14	122.41	118.75

Continued on next page...

Continued from previous page...

Mol	Chain	Res	Type	Atoms	Z	Observed(°)	Ideal(°)
2	A	301	ATP	N6-C6-N1	2.13	123.00	118.57
2	D	301	ATP	C2-N1-C6	2.12	122.38	118.75
4	D	303	N7G	C23-C22-C21	-2.03	104.12	114.42
2	D	301	ATP	O2B-PB-O1B	2.03	122.26	112.24

There are no chirality outliers.

All (15) torsion outliers are listed below:

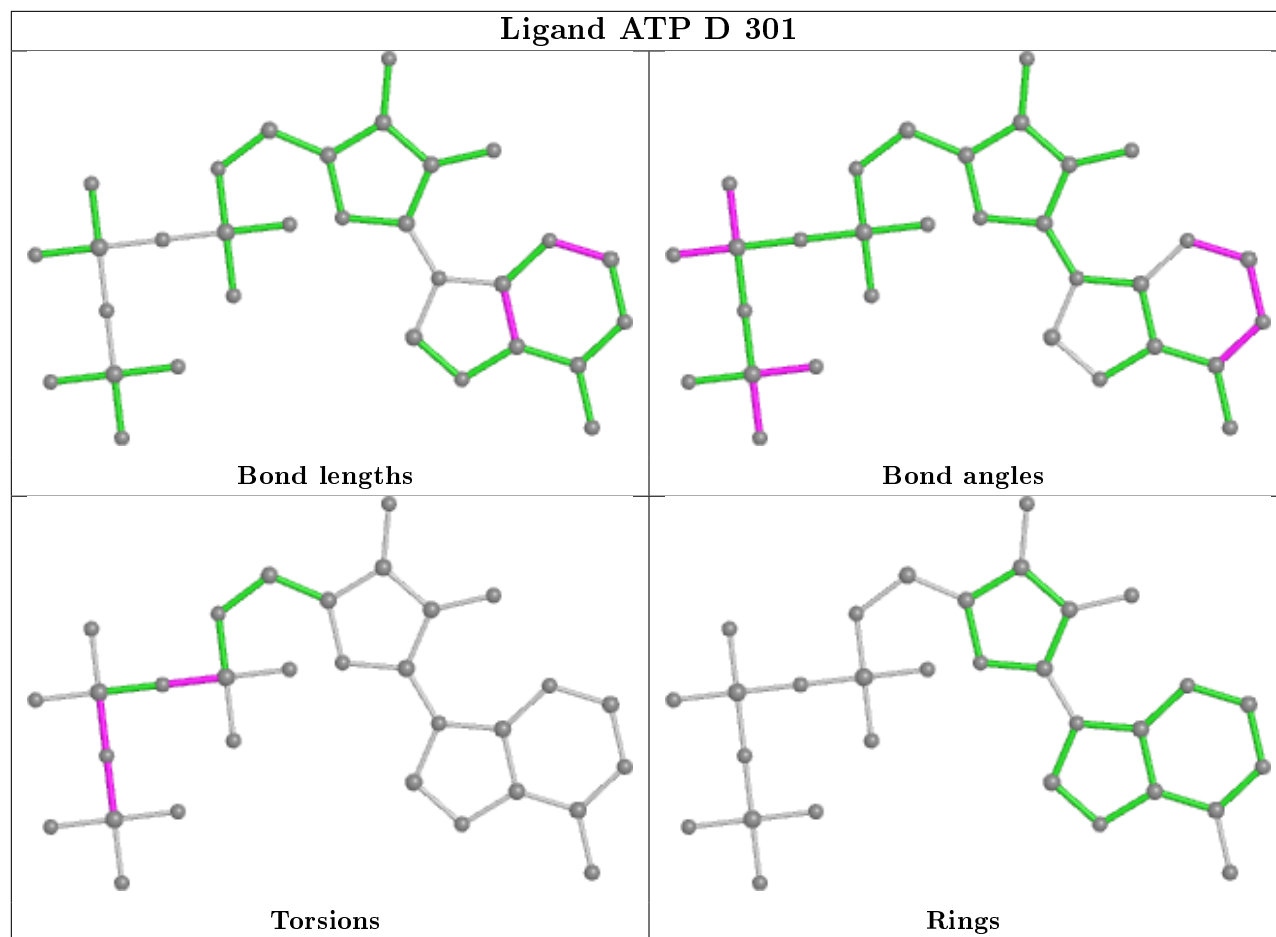
Mol	Chain	Res	Type	Atoms
4	B	303	N7G	N19-C20-C21-C22
4	D	303	N7G	C22-C23-C24-O25
4	B	302	N7G	C22-C23-C24-O25
4	D	302	N7G	C20-C21-C22-C23
4	B	303	N7G	C22-C23-C24-O25
2	B	301	ATP	PG-O3B-PB-O2B
2	A	301	ATP	PG-O3B-PB-O2B
2	B	301	ATP	PG-O3B-PB-O1B
2	D	301	ATP	PG-O3B-PB-O1B
2	C	301	ATP	PG-O3B-PB-O1B
4	B	302	N7G	C20-C21-C22-C23
2	D	301	ATP	PB-O3B-PG-O3G
2	D	301	ATP	PB-O3A-PA-O1A
4	D	303	N7G	C20-C21-C22-C23
4	D	302	N7G	C21-C22-C23-C24

There are no ring outliers.

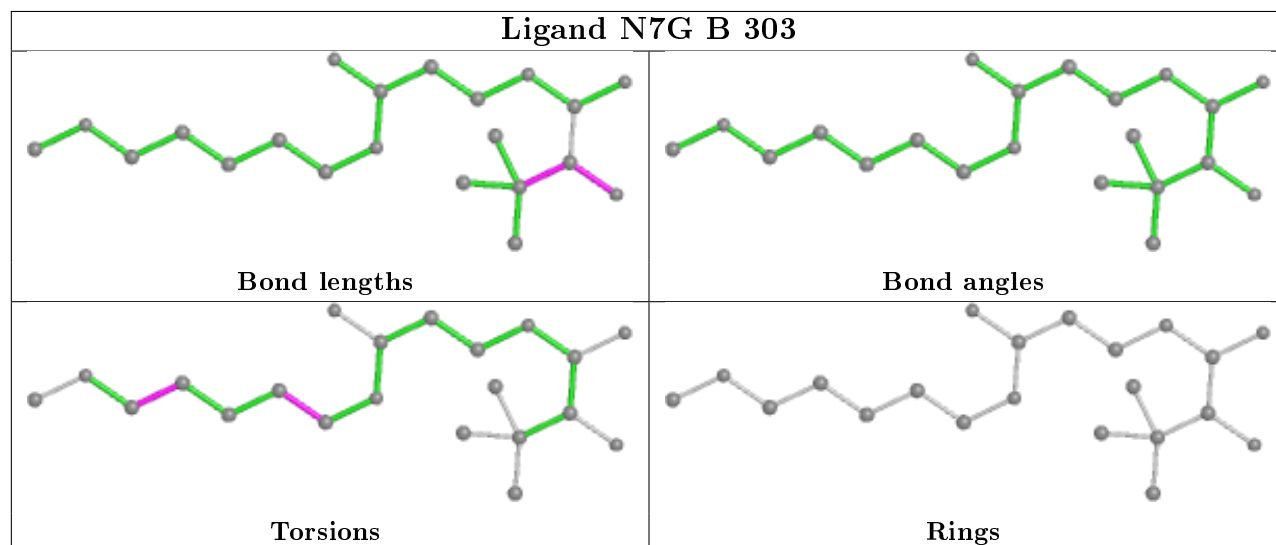
No monomer is involved in short contacts.

The following is a two-dimensional graphical depiction of Mogul quality analysis of bond lengths, bond angles, torsion angles, and ring geometry for all instances of the Ligand of Interest. In addition, ligands with molecular weight > 250 and outliers as shown on the validation Tables will also be included. For torsion angles, if less than 5% of the Mogul distribution of torsion angles is within 10 degrees of the torsion angle in question, then that torsion angle is considered an outlier. Any bond that is central to one or more torsion angles identified as an outlier by Mogul will be highlighted in the graph. For rings, the root-mean-square deviation (RMSD) between the ring in question and similar rings identified by Mogul is calculated over all ring torsion angles. If the average RMSD is greater than 60 degrees and the minimal RMSD between the ring in question and any Mogul-identified rings is also greater than 60 degrees, then that ring is considered an outlier. The outliers are highlighted in purple. The color gray indicates Mogul did not find sufficient equivalents in the CSD to analyse the geometry.

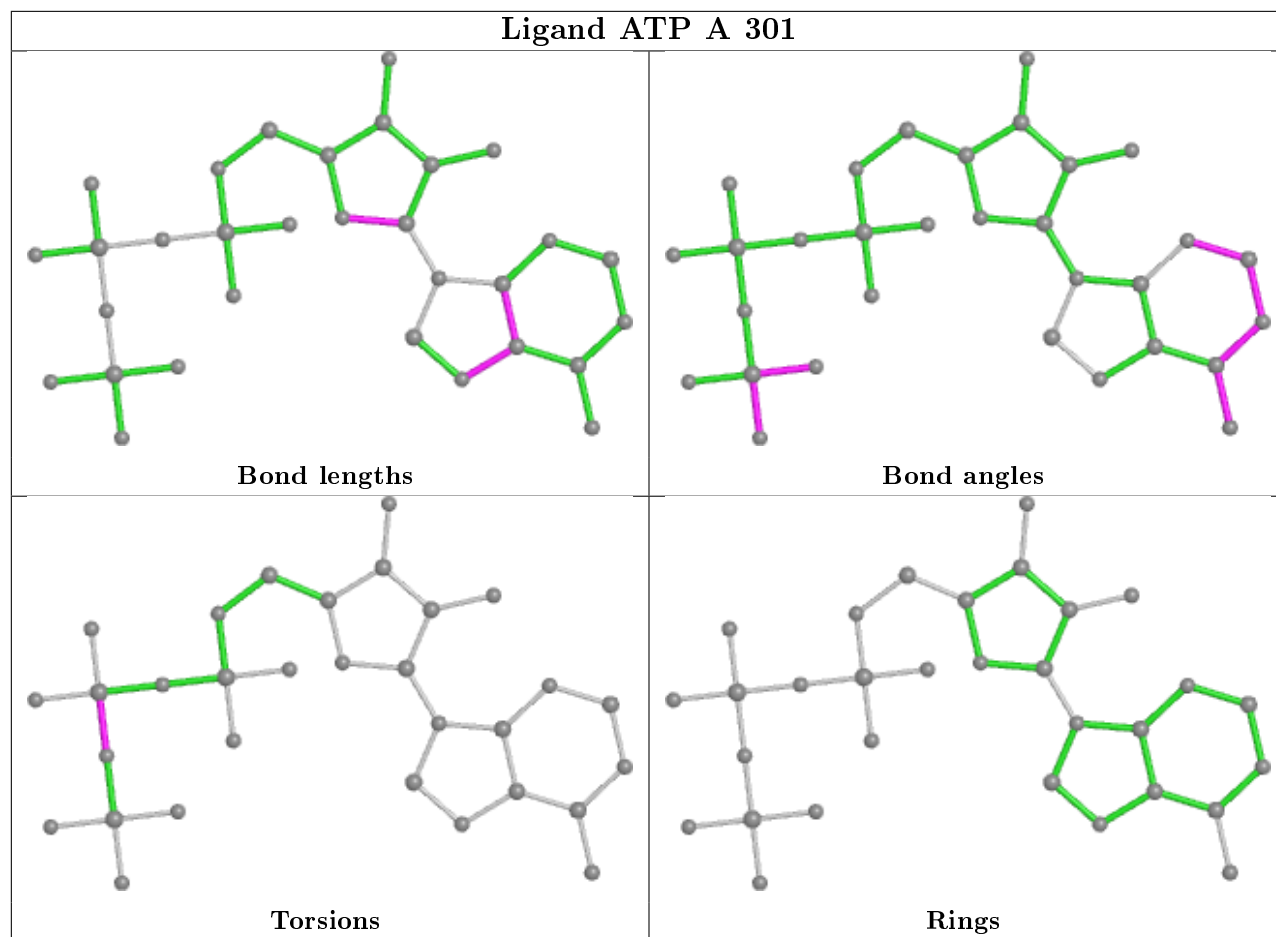
Ligand ATP D 301



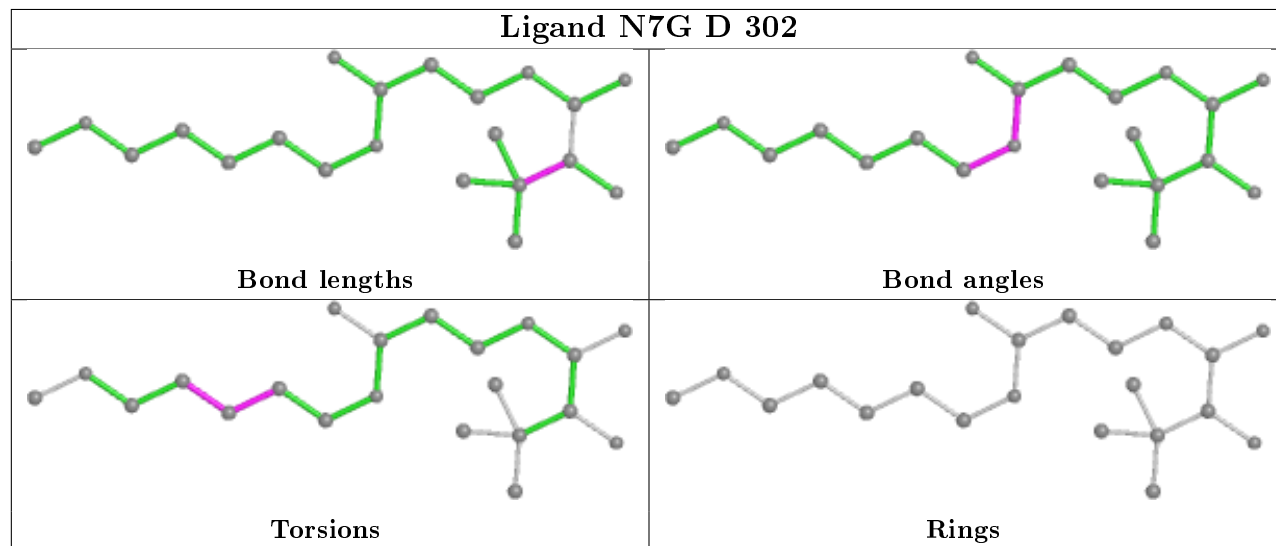
Ligand N7G B 303



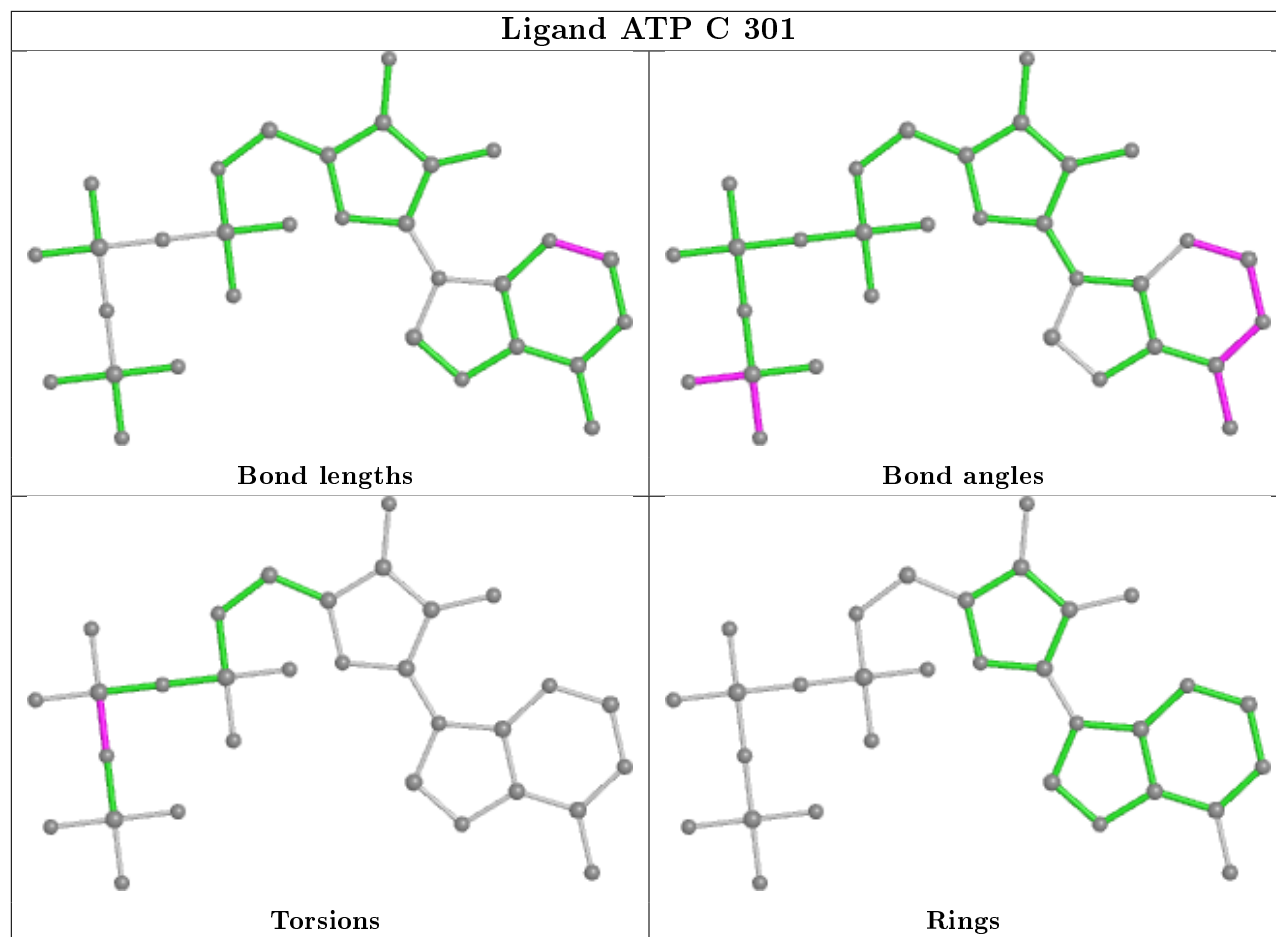
Ligand ATP A 301



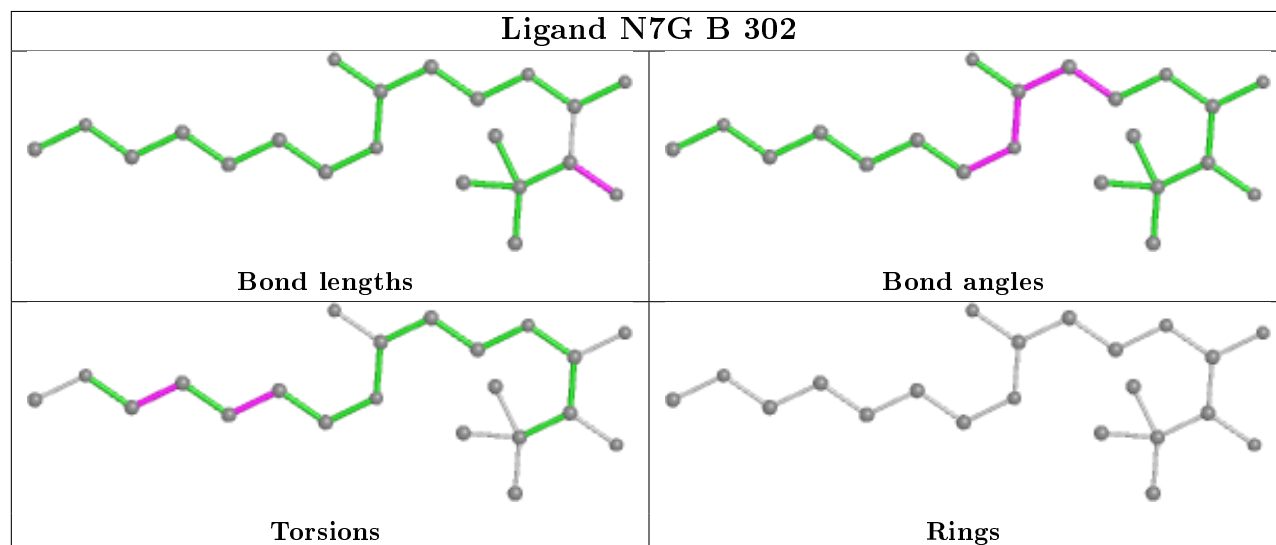
Ligand N7G D 302

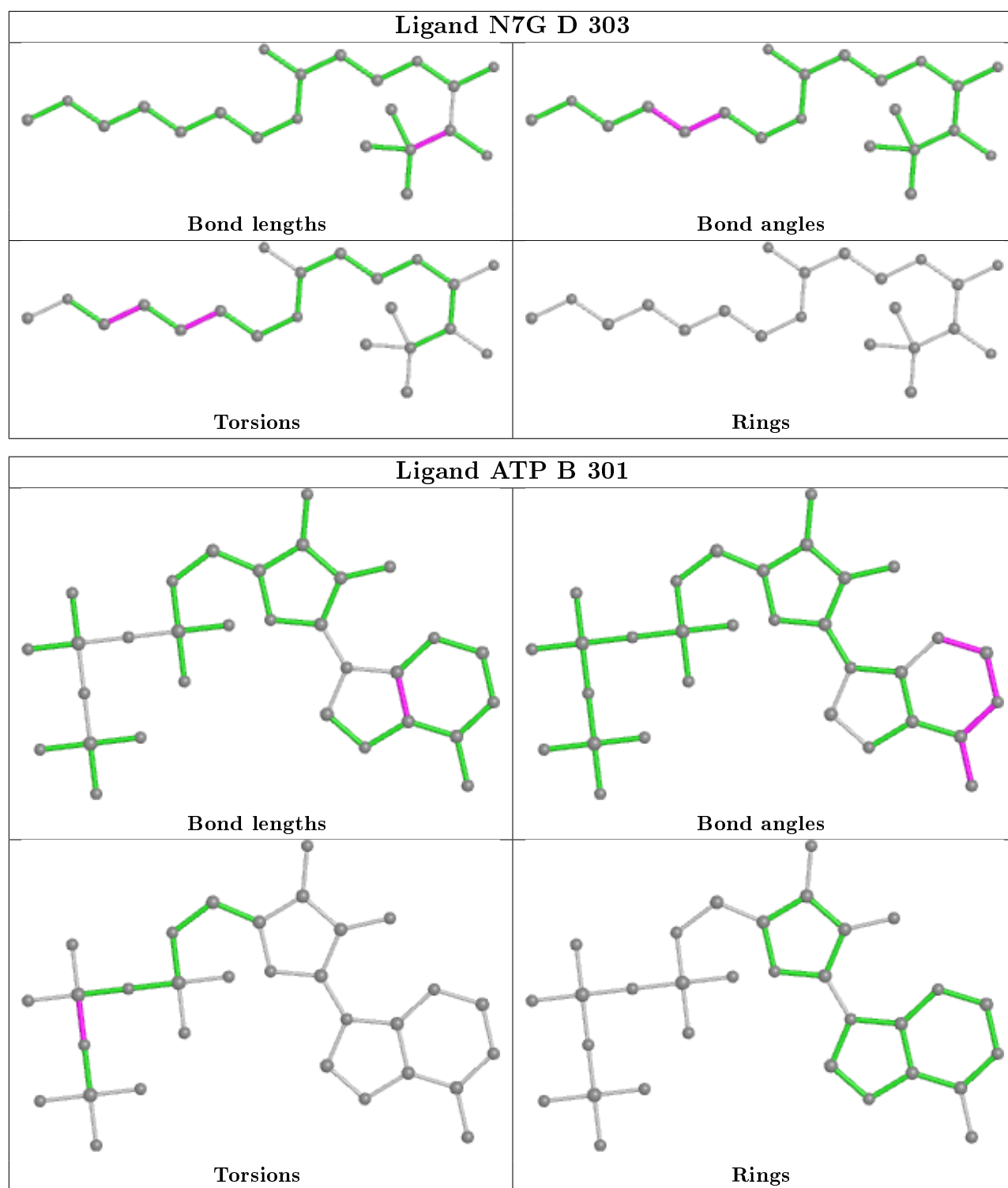


Ligand ATP C 301



Ligand N7G B 302





5.7 Other polymers [\(i\)](#)

There are no such residues in this entry.

5.8 Polymer linkage issues ⓘ

There are no chain breaks in this entry.

6 Fit of model and data

6.1 Protein, DNA and RNA chains

In the following table, the column labelled ‘#RSRZ> 2’ contains the number (and percentage) of RSRZ outliers, followed by percent RSRZ outliers for the chain as percentile scores relative to all X-ray entries and entries of similar resolution. The OWAB column contains the minimum, median, 95th percentile and maximum values of the occupancy-weighted average B-factor per residue. The column labelled ‘Q< 0.9’ lists the number of (and percentage) of residues with an average occupancy less than 0.9.

Mol	Chain	Analysed	<RSRZ>	#RSRZ>2	OWAB(Å ²)	Q<0.9
1	A	266/266 (100%)	0.00	6 (2%) 60 63	16, 25, 49, 75	0
1	B	264/266 (99%)	-0.03	5 (1%) 66 69	16, 23, 46, 71	0
1	C	265/266 (99%)	0.12	8 (3%) 50 53	16, 26, 47, 60	0
1	D	264/266 (99%)	0.40	28 (10%) 6 7	16, 27, 64, 86	0
All	All	1059/1064 (99%)	0.12	47 (4%) 34 37	16, 25, 53, 86	0

All (47) RSRZ outliers are listed below:

Mol	Chain	Res	Type	RSRZ
1	D	41	GLN	5.1
1	D	43	GLN	4.5
1	D	36	VAL	4.2
1	D	61	ILE	4.0
1	D	62	ASN	4.0
1	D	33	ASP	3.9
1	D	38	TRP	3.7
1	D	64	PRO	3.7
1	D	264	TYR	3.6
1	D	59	GLU	3.3
1	B	19	ASP	3.3
1	D	40	ASN	3.2
1	A	43	GLN	3.1
1	C	41	GLN	3.0
1	A	184	ASP	3.0
1	D	54	ALA	3.0
1	C	162	ASP	2.9
1	D	58	ALA	2.9
1	A	266	GLU	2.8
1	D	37	GLU	2.8
1	B	184	ASP	2.8

Continued on next page...

Continued from previous page...

Mol	Chain	Res	Type	RSRZ
1	A	185	ALA	2.8
1	D	65	ALA	2.8
1	D	184	ASP	2.7
1	D	63	ILE	2.7
1	C	161	LYS	2.7
1	B	186	ASP	2.7
1	B	21	GLN	2.6
1	D	60	ASN	2.5
1	D	44	ILE	2.5
1	D	42	GLN	2.5
1	D	39	LEU	2.5
1	A	88	ASP	2.5
1	C	20	ASN	2.5
1	C	163	THR	2.4
1	A	59	GLU	2.4
1	C	37	GLU	2.4
1	D	46	LYS	2.4
1	D	56	VAL	2.3
1	D	57	ILE	2.3
1	C	146	HIS	2.3
1	B	162	ASP	2.3
1	C	19	ASP	2.2
1	D	55	GLY	2.2
1	D	2	LYS	2.2
1	D	35	VAL	2.1
1	D	45	GLU	2.0

6.2 Non-standard residues in protein, DNA, RNA chains [i](#)

There are no non-standard protein/DNA/RNA residues in this entry.

6.3 Carbohydrates [i](#)

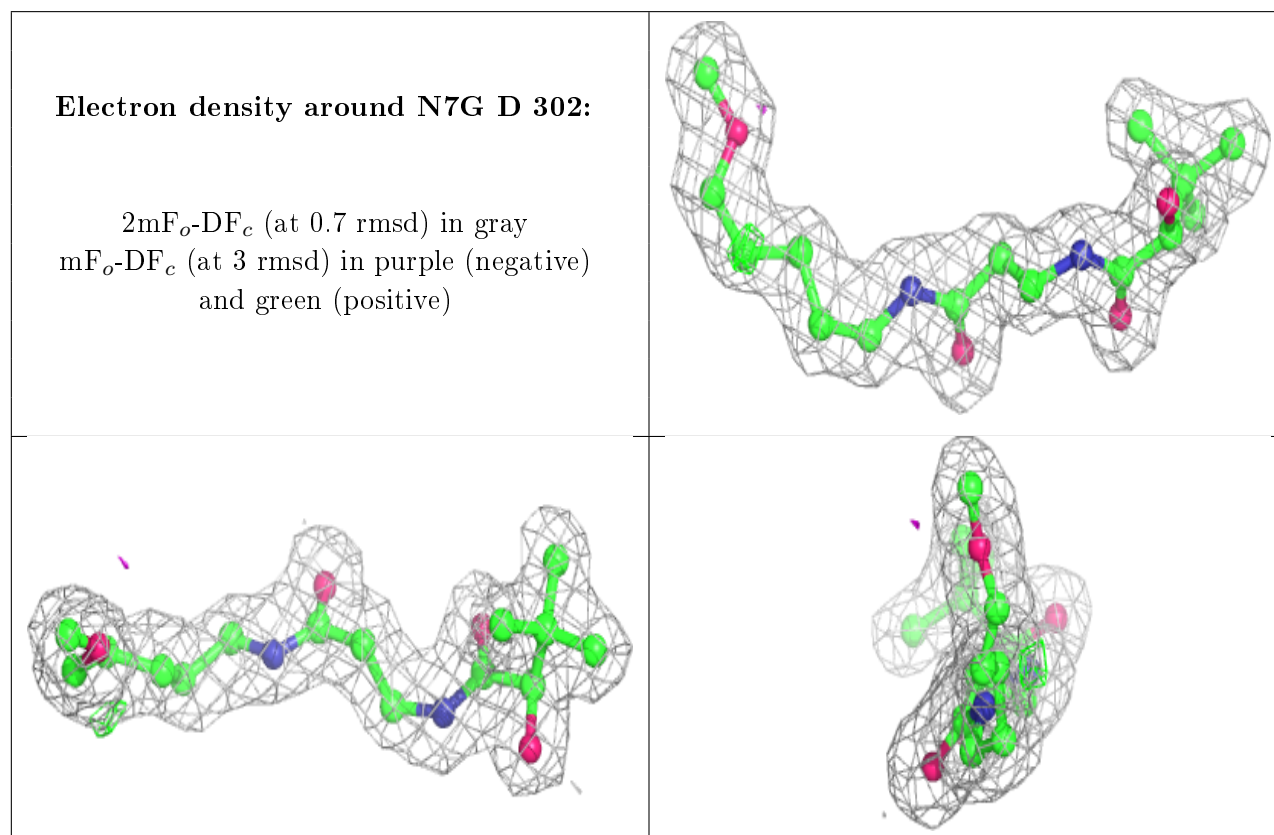
There are no carbohydrates in this entry.

6.4 Ligands [i](#)

In the following table, the Atoms column lists the number of modelled atoms in the group and the number defined in the chemical component dictionary. The B-factors column lists the minimum, median, 95th percentile and maximum values of B factors of atoms in the group. The column labelled 'Q< 0.9' lists the number of atoms with occupancy less than 0.9.

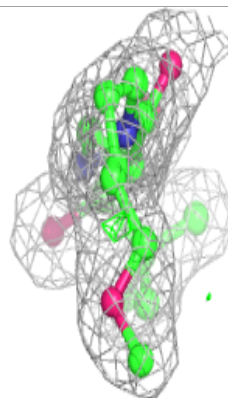
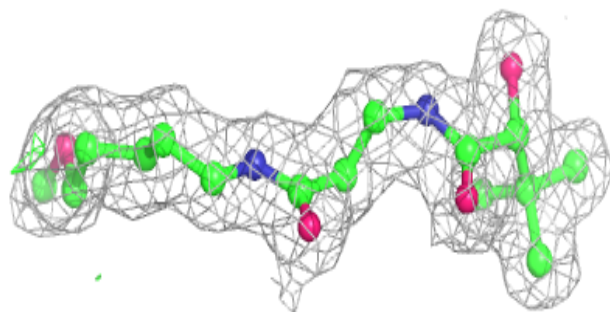
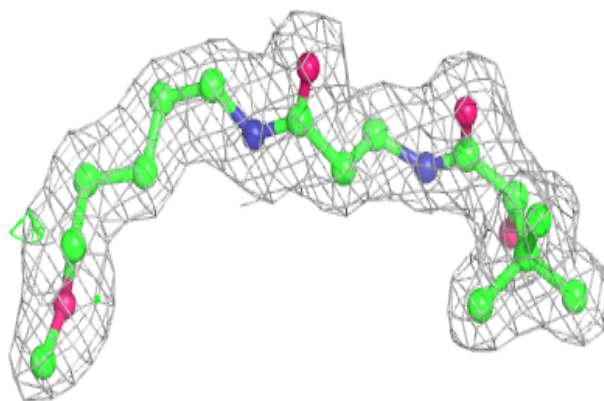
Mol	Type	Chain	Res	Atoms	RSCC	RSR	B-factors(\AA^2)	Q<0.9
4	N7G	D	302	21/21	0.96	0.14	17,19,21,22	0
4	N7G	B	302	21/21	0.96	0.10	19,20,29,29	0
4	N7G	D	303	21/21	0.96	0.10	21,23,26,28	0
3	MG	B	304	1/1	0.96	0.06	23,23,23,23	0
2	ATP	D	301	31/31	0.97	0.08	22,25,31,32	1
4	N7G	B	303	21/21	0.97	0.12	16,18,19,20	0
3	MG	D	304	1/1	0.97	0.08	32,32,32,32	0
2	ATP	A	301	31/31	0.98	0.08	16,19,22,23	0
2	ATP	C	301	31/31	0.98	0.08	16,19,23,26	0
3	MG	A	302	1/1	0.98	0.07	19,19,19,19	0
2	ATP	B	301	31/31	0.98	0.07	18,22,27,29	1
3	MG	C	302	1/1	0.99	0.05	19,19,19,19	0

The following is a graphical depiction of the model fit to experimental electron density of all instances of the Ligand of Interest. In addition, ligands with molecular weight > 250 and outliers as shown on the geometry validation Tables will also be included. Each fit is shown from different orientation to approximate a three-dimensional view.

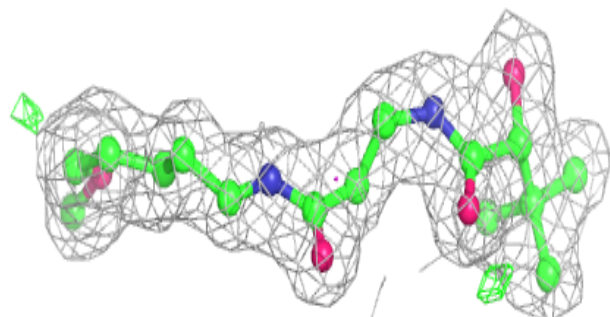
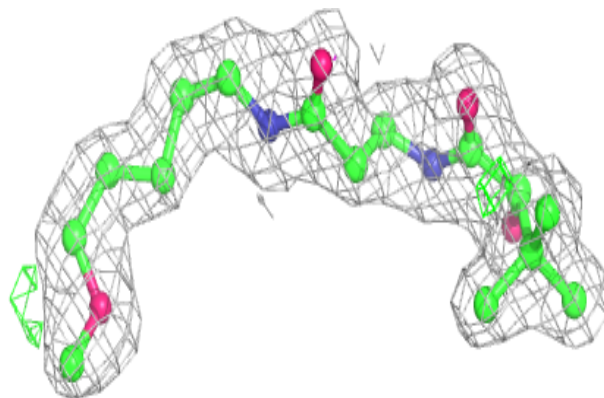


Electron density around N7G B 302:

$2mF_o-DF_c$ (at 0.7 rmsd) in gray
 mF_o-DF_c (at 3 rmsd) in purple (negative)
and green (positive)

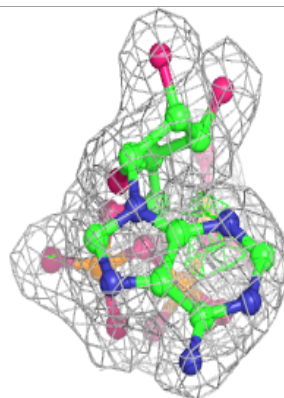
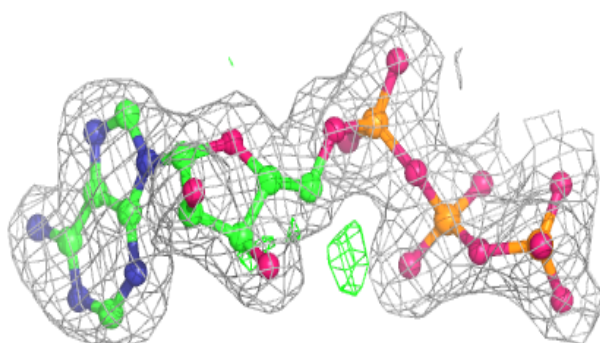
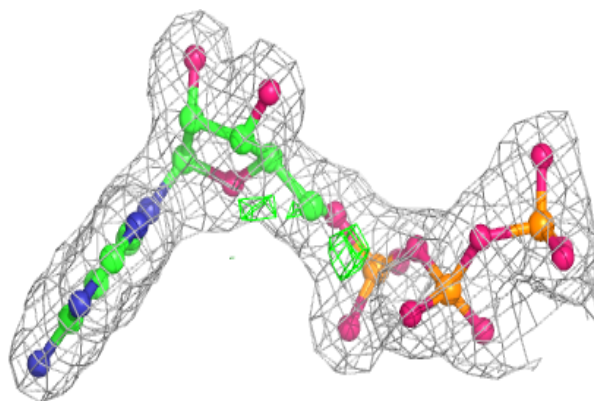
**Electron density around N7G D 303:**

$2mF_o-DF_c$ (at 0.7 rmsd) in gray
 mF_o-DF_c (at 3 rmsd) in purple (negative)
and green (positive)

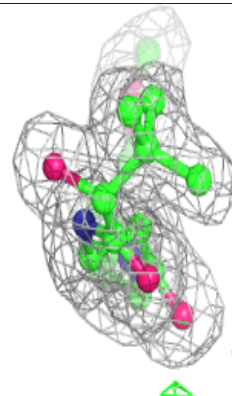
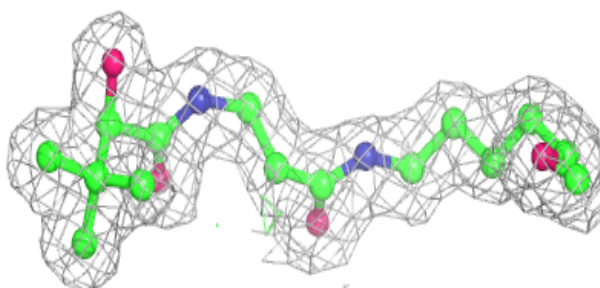
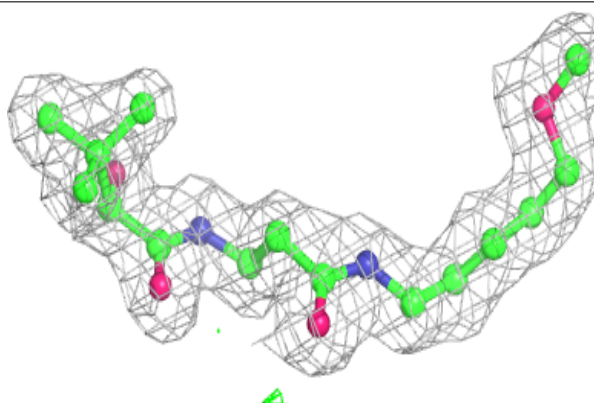


Electron density around ATP D 301:

$2mF_o-DF_c$ (at 0.7 rmsd) in gray
 mF_o-DF_c (at 3 rmsd) in purple (negative)
and green (positive)

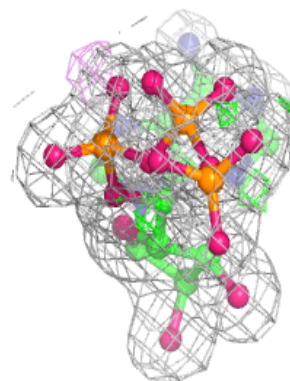
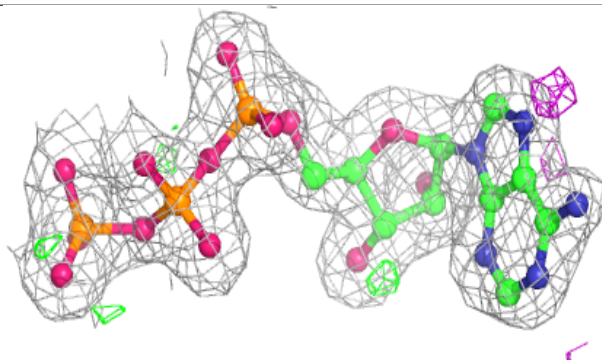
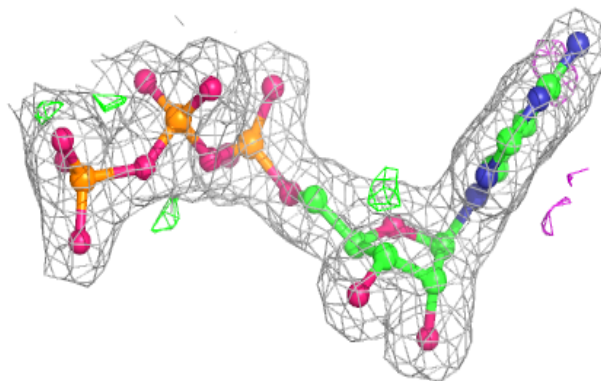
**Electron density around N7G B 303:**

$2mF_o-DF_c$ (at 0.7 rmsd) in gray
 mF_o-DF_c (at 3 rmsd) in purple (negative)
and green (positive)

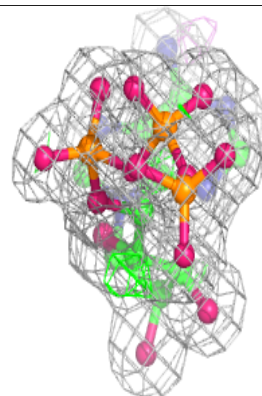
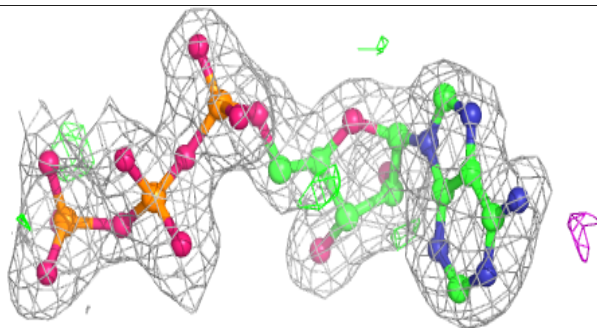
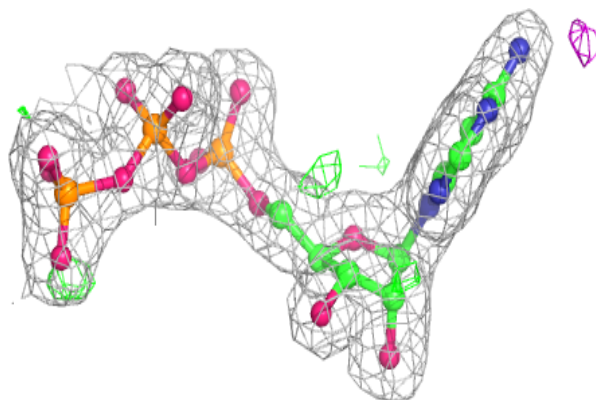


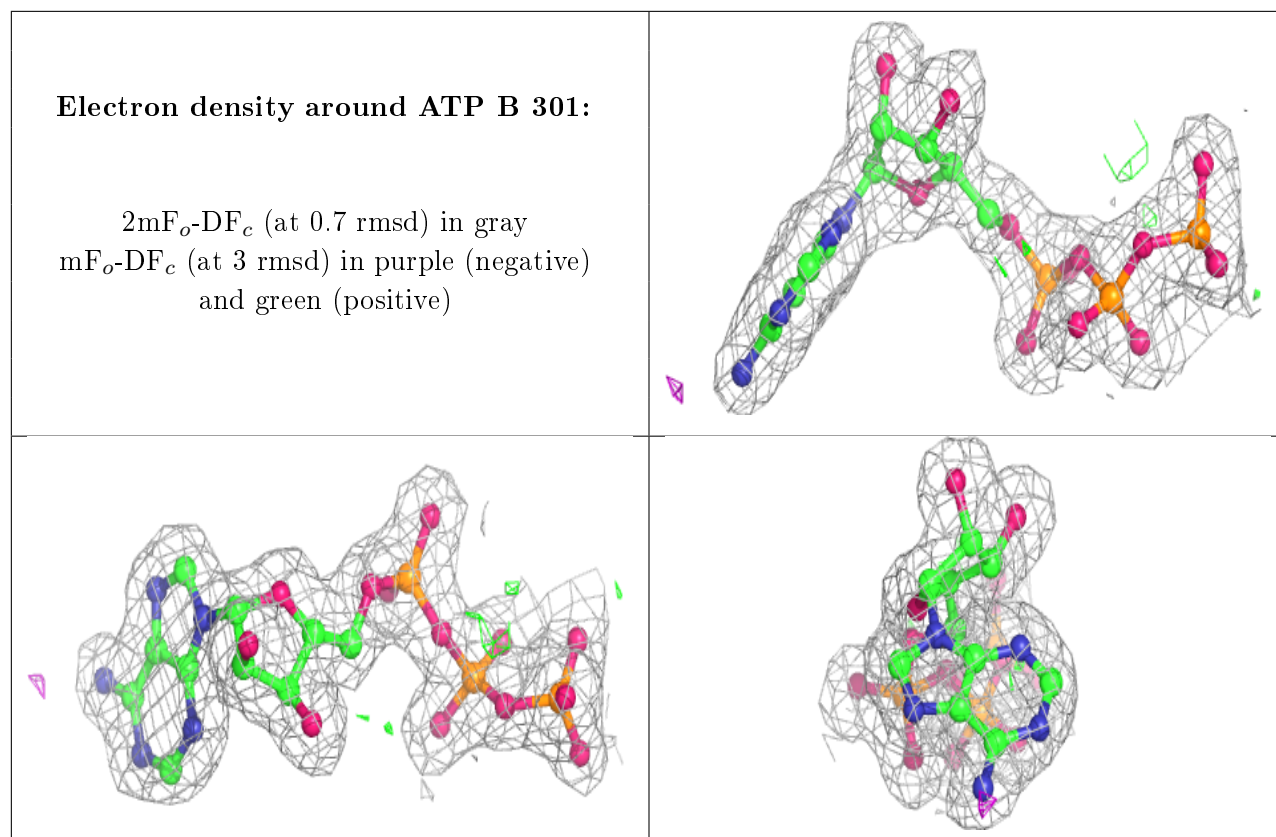
Electron density around ATP A 301:

$2mF_o-DF_c$ (at 0.7 rmsd) in gray
 mF_o-DF_c (at 3 rmsd) in purple (negative)
and green (positive)

**Electron density around ATP C 301:**

$2mF_o-DF_c$ (at 0.7 rmsd) in gray
 mF_o-DF_c (at 3 rmsd) in purple (negative)
and green (positive)





6.5 Other polymers [i](#)

There are no such residues in this entry.