



Full wwPDB X-ray Structure Validation Report ⓘ

May 21, 2020 – 09:36 pm BST

PDB ID : 6AXE
Title : Crystal structure of a malate synthase G from Mycobacterium marinum bound to acetyl CoA
Authors : Seattle Structural Genomics Center for Infectious Disease (SSGCID)
Deposited on : 2017-09-06
Resolution : 1.60 Å(reported)

This is a Full wwPDB X-ray Structure Validation Report for a publicly released PDB entry.

We welcome your comments at validation@mail.wwpdb.org

A user guide is available at

<https://www.wwpdb.org/validation/2017/XrayValidationReportHelp>

with specific help available everywhere you see the ⓘ symbol.

The following versions of software and data (see [references ⓘ](#)) were used in the production of this report:

MolProbity : 4.02b-467
Mogul : 1.8.5 (274361), CSD as541be (2020)
Xtriage (Phenix) : 1.13
EDS : 2.11
buster-report : 1.1.7 (2018)
Percentile statistics : 20191225.v01 (using entries in the PDB archive December 25th 2019)
Refmac : 5.8.0158
CCP4 : 7.0.044 (Gargrove)
Ideal geometry (proteins) : Engh & Huber (2001)
Ideal geometry (DNA, RNA) : Parkinson et al. (1996)
Validation Pipeline (wwPDB-VP) : 2.11

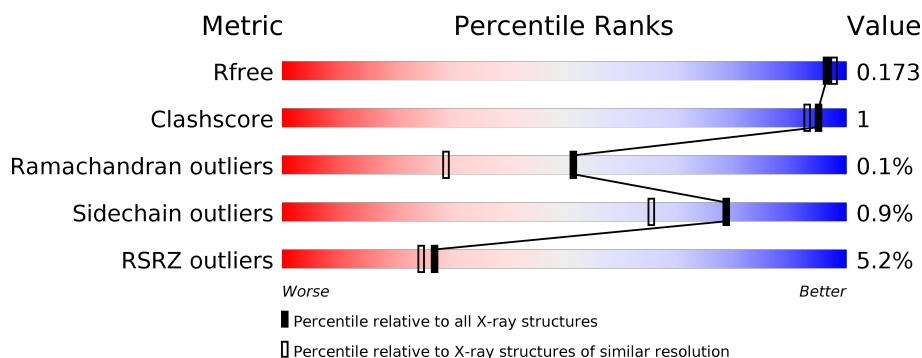
1 Overall quality at a glance

The following experimental techniques were used to determine the structure:

X-RAY DIFFRACTION

The reported resolution of this entry is 1.60 Å.

Percentile scores (ranging between 0-100) for global validation metrics of the entry are shown in the following graphic. The table shows the number of entries on which the scores are based.



Metric	Whole archive (#Entries)	Similar resolution (#Entries, resolution range(Å))
R_{free}	130704	3398 (1.60-1.60)
Clashscore	141614	3665 (1.60-1.60)
Ramachandran outliers	138981	3564 (1.60-1.60)
Sidechain outliers	138945	3563 (1.60-1.60)
RSRZ outliers	127900	3321 (1.60-1.60)

The table below summarises the geometric issues observed across the polymeric chains and their fit to the electron density. The red, orange, yellow and green segments on the lower bar indicate the fraction of residues that contain outliers for ≥ 3 , 2, 1 and 0 types of geometric quality criteria respectively. A grey segment represents the fraction of residues that are not modelled. The numeric value for each fraction is indicated below the corresponding segment, with a dot representing fractions $\leq 5\%$. The upper red bar (where present) indicates the fraction of residues that have poor fit to the electron density. The numeric value is given above the bar.

Mol	Chain	Length	Quality of chain
1	A	739	<div> <div>3%</div> <div>97%</div> <div>..</div> </div>
1	B	739	<div> <div>7%</div> <div>94%</div> <div>...</div> </div>

2 Entry composition

There are 6 unique types of molecules in this entry. The entry contains 13195 atoms, of which 0 are hydrogens and 0 are deuteriums.

In the tables below, the ZeroOcc column contains the number of atoms modelled with zero occupancy, the AltConf column contains the number of residues with at least one atom in alternate conformation and the Trace column contains the number of residues modelled with at most 2 atoms.

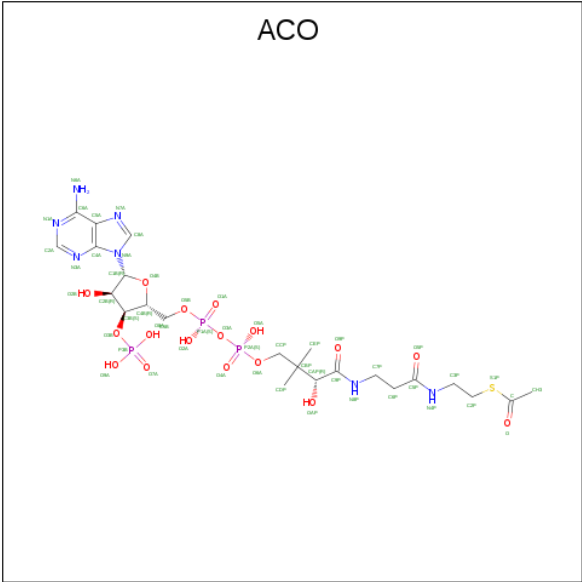
- Molecule 1 is a protein called Malate synthase G.

Mol	Chain	Residues	Atoms					ZeroOcc	AltConf	Trace
1	A	729	Total	C	N	O	S	0	14	0
			5586	3502	968	1093	23			
1	B	724	Total	C	N	O	S	0	18	0
			5594	3515	970	1086	23			

There are 16 discrepancies between the modelled and reference sequences:

Chain	Residue	Modelled	Actual	Comment	Reference
A	-7	MET	-	initiating methionine	UNP B2HSY2
A	-6	ALA	-	expression tag	UNP B2HSY2
A	-5	HIS	-	expression tag	UNP B2HSY2
A	-4	HIS	-	expression tag	UNP B2HSY2
A	-3	HIS	-	expression tag	UNP B2HSY2
A	-2	HIS	-	expression tag	UNP B2HSY2
A	-1	HIS	-	expression tag	UNP B2HSY2
A	0	HIS	-	expression tag	UNP B2HSY2
B	-7	MET	-	initiating methionine	UNP B2HSY2
B	-6	ALA	-	expression tag	UNP B2HSY2
B	-5	HIS	-	expression tag	UNP B2HSY2
B	-4	HIS	-	expression tag	UNP B2HSY2
B	-3	HIS	-	expression tag	UNP B2HSY2
B	-2	HIS	-	expression tag	UNP B2HSY2
B	-1	HIS	-	expression tag	UNP B2HSY2
B	0	HIS	-	expression tag	UNP B2HSY2

- Molecule 2 is ACETYL COENZYME *A (three-letter code: ACO) (formula: C₂₃H₃₈N₇O₁₇P₃S).



Mol	Chain	Residues	Atoms						ZeroOcc	AltConf
2	A	1	Total	C	N	O	P	S	0	0
			51	23	7	17	3	1		
2	B	1	Total	C	N	O	P	S	0	0
			51	23	7	17	3	1		

- Molecule 3 is MAGNESIUM ION (three-letter code: MG) (formula: Mg).

Mol	Chain	Residues	Atoms		ZeroOcc	AltConf
3	B	1	Total	Mg	0	0
			1	1		
3	A	1	Total	Mg	0	0
			1	1		

- Molecule 4 is ACETATE ION (three-letter code: ACT) (formula: C₂H₃O₂).



Mol	Chain	Residues	Atoms			ZeroOcc	AltConf
4	A	1	Total	C	O	0	0
			4	2	2		

- Molecule 5 is 1,2-ETHANEDIOL (three-letter code: EDO) (formula: C₂H₆O₂).



Mol	Chain	Residues	Atoms			ZeroOcc	AltConf
5	B	1	Total	C	O	0	0
			4	2	2		

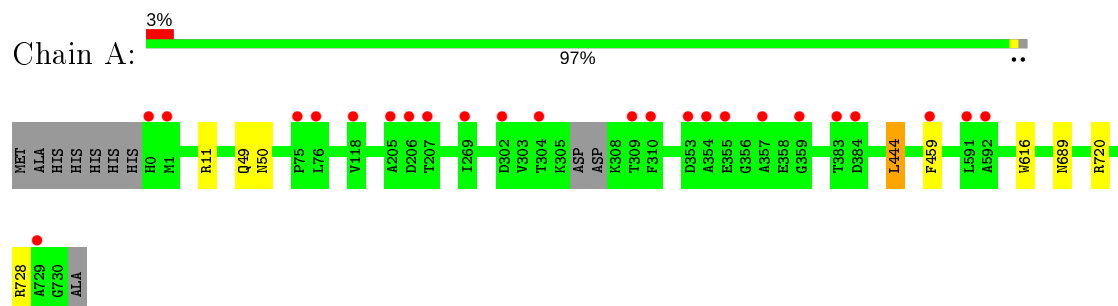
- Molecule 6 is water.

Mol	Chain	Residues	Atoms		ZeroOcc	AltConf
6	A	1021	Total 1028	O 1028	0	7
6	B	871	Total 875	O 875	0	4

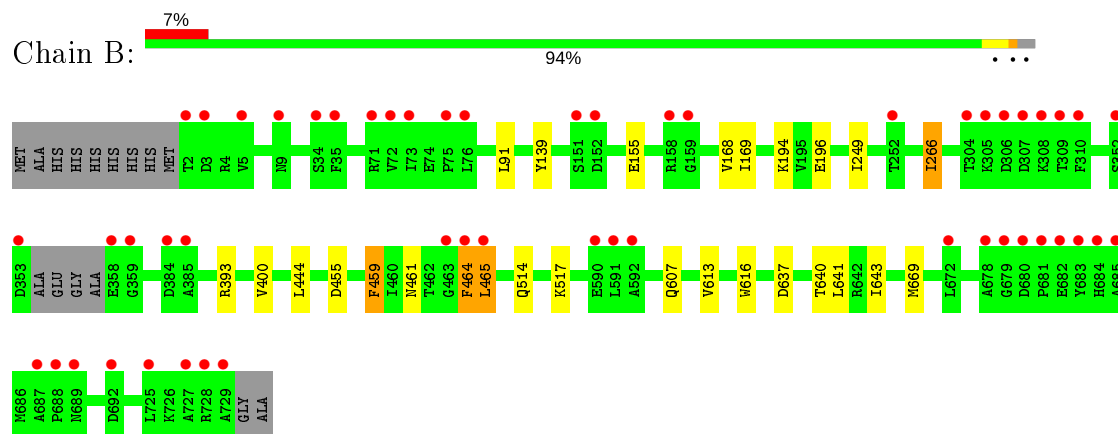
3 Residue-property plots [i](#)

These plots are drawn for all protein, RNA and DNA chains in the entry. The first graphic for a chain summarises the proportions of the various outlier classes displayed in the second graphic. The second graphic shows the sequence view annotated by issues in geometry and electron density. Residues are color-coded according to the number of geometric quality criteria for which they contain at least one outlier: green = 0, yellow = 1, orange = 2 and red = 3 or more. A red dot above a residue indicates a poor fit to the electron density ($RSRZ > 2$). Stretches of 2 or more consecutive residues without any outlier are shown as a green connector. Residues present in the sample, but not in the model, are shown in grey.

• Molecule 1: Malate synthase G



• Molecule 1: Malate synthase G



4 Data and refinement statistics

Property	Value	Source
Space group	P 1 21 1	Depositor
Cell constants a, b, c, α , β , γ	78.60 Å 86.98 Å 124.13 Å 90.00° 98.45° 90.00°	Depositor
Resolution (Å)	38.73 – 1.60 44.66 – 1.60	Depositor EDS
% Data completeness (in resolution range)	98.3 (38.73-1.60) 98.4 (44.66-1.60)	Depositor EDS
R_{merge}	0.05	Depositor
R_{sym}	(Not available)	Depositor
$\langle I/\sigma(I) \rangle$ ¹	2.28 (at 1.60 Å)	Xtriage
Refinement program	PHENIX	Depositor
R, R_{free}	0.152 , 0.174 0.152 , 0.173	Depositor DCC
R_{free} test set	1995 reflections (0.93%)	wwPDB-VP
Wilson B-factor (Å ²)	20.6	Xtriage
Anisotropy	0.068	Xtriage
Bulk solvent k_{sol} (e/Å ³), B_{sol} (Å ²)	0.32 , 51.6	EDS
L-test for twinning ²	$\langle L \rangle = 0.50$, $\langle L^2 \rangle = 0.34$	Xtriage
Estimated twinning fraction	No twinning to report.	Xtriage
F_o, F_c correlation	0.98	EDS
Total number of atoms	13195	wwPDB-VP
Average B, all atoms (Å ²)	29.0	wwPDB-VP

Xtriage's analysis on translational NCS is as follows: *The largest off-origin peak in the Patterson function is 3.39% of the height of the origin peak. No significant pseudotranslation is detected.*

¹Intensities estimated from amplitudes.

²Theoretical values of $\langle |L| \rangle$, $\langle L^2 \rangle$ for acentric reflections are 0.5, 0.333 respectively for untwinned datasets, and 0.375, 0.2 for perfectly twinned datasets.

5 Model quality

5.1 Standard geometry

Bond lengths and bond angles in the following residue types are not validated in this section: MG, ACO, EDO, ACT

The Z score for a bond length (or angle) is the number of standard deviations the observed value is removed from the expected value. A bond length (or angle) with $|Z| > 5$ is considered an outlier worth inspection. RMSZ is the root-mean-square of all Z scores of the bond lengths (or angles).

Mol	Chain	Bond lengths		Bond angles	
		RMSZ	$\# Z > 5$	RMSZ	$\# Z > 5$
1	A	0.34	0/5730	0.55	1/7796 (0.0%)
1	B	0.31	0/5743	0.52	0/7808
All	All	0.33	0/11473	0.54	1/15604 (0.0%)

There are no bond length outliers.

All (1) bond angle outliers are listed below:

Mol	Chain	Res	Type	Atoms	Z	Observed(°)	Ideal(°)
1	A	444	LEU	CA-CB-CG	-7.95	97.01	115.30

There are no chirality outliers.

There are no planarity outliers.

5.2 Too-close contacts

In the following table, the Non-H and H(model) columns list the number of non-hydrogen atoms and hydrogen atoms in the chain respectively. The H(added) column lists the number of hydrogen atoms added and optimized by MolProbity. The Clashes column lists the number of clashes within the asymmetric unit, whereas Symm-Clashes lists symmetry related clashes.

Mol	Chain	Non-H	H(model)	H(added)	Clashes	Symm-Clashes
1	A	5586	0	5488	5	0
1	B	5594	0	5502	20	0
2	A	51	0	34	1	0
2	B	51	0	34	5	0
3	A	1	0	0	0	0
3	B	1	0	0	0	0
4	A	4	0	3	0	0
5	B	4	0	6	0	0

Continued on next page...

Continued from previous page...

Mol	Chain	Non-H	H(model)	H(added)	Clashes	Symm-Clashes
6	A	1028	0	0	5	1
6	B	875	0	0	3	1
All	All	13195	0	11067	27	1

The all-atom clashscore is defined as the number of clashes found per 1000 atoms (including hydrogen atoms). The all-atom clashscore for this structure is 1.

All (27) close contacts within the same asymmetric unit are listed below, sorted by their clash magnitude.

Atom-1	Atom-2	Interatomic distance (Å)	Clash overlap (Å)
2:A:801:ACO:O4B	2:A:801:ACO:C1B	1.65	1.27
2:B:801:ACO:O4B	2:B:801:ACO:C1B	1.64	1.24
1:A:720[A]:ARG:NH1	6:A:901:HOH:O	2.07	0.85
1:B:455[A]:ASP:OD1	6:B:902:HOH:O	2.00	0.77
1:B:194:LYS:NZ	1:B:196:GLU:OE2	2.31	0.63
1:B:459[B]:PHE:CZ	1:B:461[B]:ASN:HB3	2.34	0.62
1:B:168:VAL:HB	2:B:801:ACO:HH33	1.83	0.59
1:B:169:ILE:HG13	2:B:801:ACO:HH31	1.84	0.59
1:A:11:ARG:NE	6:A:915:HOH:O	2.40	0.55
1:B:459[A]:PHE:HB2	1:B:514:GLN:HB2	1.90	0.54
1:A:689:ASN:ND2	6:A:908:HOH:O	2.35	0.53
1:B:613:VAL:HG23	1:B:641:LEU:HD21	1.90	0.53
1:B:517:LYS:O	6:B:901:HOH:O	2.19	0.51
1:B:465:LEU:HD23	1:B:643:ILE:HD12	1.92	0.51
1:B:194:LYS:HE3	6:B:915:HOH:O	2.10	0.50
1:B:637:ASP:O	1:B:640:THR:HG22	2.12	0.50
1:B:266:ILE:HD13	1:B:266:ILE:H	1.77	0.49
1:A:11:ARG:NH1	6:A:921:HOH:O	2.46	0.49
1:B:139:TYR:CD2	2:B:801:ACO:HH32	2.48	0.48
1:B:464[B]:PHE:C	1:B:464[B]:PHE:CD2	2.92	0.43
1:B:249:ILE:HD11	2:B:801:ACO:H21	2.01	0.42
1:B:91:LEU:HD21	1:B:444[A]:LEU:HD13	2.01	0.41
1:B:155:GLU:H	1:B:155:GLU:CD	2.24	0.40
1:B:607:GLN:HB2	1:B:669:MET:HE2	2.03	0.40
1:B:400:VAL:HG22	1:B:459[A]:PHE:CE2	2.56	0.40
1:A:49:GLN:NE2	6:A:940:HOH:O	2.55	0.40

All (1) symmetry-related close contacts are listed below. The label for Atom-2 includes the symmetry operator and encoded unit-cell translations to be applied.

Atom-1	Atom-2	Interatomic distance (Å)	Clash overlap (Å)
6:A:905:HOH:O	6:B:1574:HOH:O[2_545]	2.19	0.01

5.3 Torsion angles [i](#)

5.3.1 Protein backbone [i](#)

In the following table, the Percentiles column shows the percent Ramachandran outliers of the chain as a percentile score with respect to all X-ray entries followed by that with respect to entries of similar resolution.

The Analysed column shows the number of residues for which the backbone conformation was analysed, and the total number of residues.

Mol	Chain	Analysed	Favoured	Allowed	Outliers	Percentiles	
1	A	739/739 (100%)	730 (99%)	9 (1%)	0	100	100
1	B	738/739 (100%)	726 (98%)	10 (1%)	2 (0%)	41	21
All	All	1477/1478 (100%)	1456 (99%)	19 (1%)	2 (0%)	51	29

All (2) Ramachandran outliers are listed below:

Mol	Chain	Res	Type
1	B	464[A]	PHE
1	B	464[B]	PHE

5.3.2 Protein sidechains [i](#)

In the following table, the Percentiles column shows the percent sidechain outliers of the chain as a percentile score with respect to all X-ray entries followed by that with respect to entries of similar resolution.

The Analysed column shows the number of residues for which the sidechain conformation was analysed, and the total number of residues.

Mol	Chain	Analysed	Rotameric	Outliers	Percentiles	
1	A	588/595 (99%)	583 (99%)	5 (1%)	78	65
1	B	588/595 (99%)	582 (99%)	6 (1%)	76	61
All	All	1176/1190 (99%)	1165 (99%)	11 (1%)	78	65

All (11) residues with a non-rotameric sidechain are listed below:

Mol	Chain	Res	Type
1	A	50	ASN
1	A	444	LEU
1	A	459	PHE
1	A	616	TRP
1	A	728	ARG
1	B	266	ILE
1	B	393	ARG
1	B	459[A]	PHE
1	B	459[B]	PHE
1	B	465	LEU
1	B	616	TRP

Some sidechains can be flipped to improve hydrogen bonding and reduce clashes. All (1) such sidechains are listed below:

Mol	Chain	Res	Type
1	A	49	GLN

5.3.3 RNA [i](#)

There are no RNA molecules in this entry.

5.4 Non-standard residues in protein, DNA, RNA chains [i](#)

There are no non-standard protein/DNA/RNA residues in this entry.

5.5 Carbohydrates [i](#)

There are no carbohydrates in this entry.

5.6 Ligand geometry [i](#)

Of 6 ligands modelled in this entry, 2 are monoatomic - leaving 4 for Mogul analysis.

In the following table, the Counts columns list the number of bonds (or angles) for which Mogul statistics could be retrieved, the number of bonds (or angles) that are observed in the model and the number of bonds (or angles) that are defined in the Chemical Component Dictionary. The Link column lists molecule types, if any, to which the group is linked. The Z score for a bond length (or angle) is the number of standard deviations the observed value is removed from the expected value. A bond length (or angle) with $|Z| > 2$ is considered an outlier worth inspection. RMSZ is the root-mean-square of all Z scores of the bond lengths (or angles).

Mol	Type	Chain	Res	Link	Bond lengths			Bond angles		
					Counts	RMSZ	# Z > 2	Counts	RMSZ	# Z > 2
4	ACT	A	803	-	1,3,3	5.73	1 (100%)	0,3,3	0.00	-
2	ACO	A	801	-	45,53,53	3.84	16 (35%)	56,79,79	1.85	7 (12%)
2	ACO	B	801	-	45,53,53	3.83	17 (37%)	56,79,79	2.04	10 (17%)
5	EDO	B	802	-	3,3,3	0.42	0	2,2,2	0.44	0

In the following table, the Chirals column lists the number of chiral outliers, the number of chiral centers analysed, the number of these observed in the model and the number defined in the Chemical Component Dictionary. Similar counts are reported in the Torsion and Rings columns. '-' means no outliers of that kind were identified.

Mol	Type	Chain	Res	Link	Chirals	Torsions	Rings
2	ACO	A	801	-	-	6/47/67/67	0/3/3/3
2	ACO	B	801	-	-	12/47/67/67	0/3/3/3
5	EDO	B	802	-	-	0/1/1/1	-

All (34) bond length outliers are listed below:

Mol	Chain	Res	Type	Atoms	Z	Observed(Å)	Ideal(Å)
2	A	801	ACO	O4B-C1B	17.35	1.65	1.41
2	B	801	ACO	O4B-C1B	16.72	1.64	1.41
2	A	801	ACO	C2B-C1B	-11.78	1.35	1.53
2	B	801	ACO	C2B-C1B	-11.76	1.35	1.53
2	B	801	ACO	C5P-N4P	7.29	1.50	1.33
2	A	801	ACO	C5P-N4P	7.18	1.49	1.33
2	B	801	ACO	O4B-C4B	-6.72	1.30	1.45
2	A	801	ACO	O4B-C4B	-5.88	1.31	1.45
4	A	803	ACT	CH3-C	5.73	1.56	1.48
2	B	801	ACO	C9P-N8P	5.67	1.46	1.33
2	A	801	ACO	C9P-N8P	5.41	1.45	1.33
2	A	801	ACO	C6A-N6A	3.51	1.46	1.34
2	B	801	ACO	C6A-N6A	3.39	1.46	1.34
2	B	801	ACO	P3B-O3B	3.37	1.65	1.59
2	A	801	ACO	P3B-O3B	3.28	1.65	1.59
2	A	801	ACO	C6P-C5P	3.24	1.57	1.51
2	B	801	ACO	C6P-C5P	3.18	1.57	1.51
2	A	801	ACO	O3B-C3B	-2.97	1.33	1.44
2	B	801	ACO	O5P-C5P	-2.86	1.17	1.23
2	A	801	ACO	P2A-O6A	2.80	1.70	1.59
2	B	801	ACO	O3B-C3B	-2.76	1.34	1.44
2	A	801	ACO	C2A-N1A	2.64	1.38	1.33
2	B	801	ACO	P2A-O6A	2.59	1.69	1.59

Continued on next page...

Continued from previous page...

Mol	Chain	Res	Type	Atoms	Z	Observed(Å)	Ideal(Å)
2	B	801	ACO	C3B-C4B	2.44	1.59	1.52
2	A	801	ACO	C3B-C4B	2.43	1.59	1.52
2	B	801	ACO	P1A-O5B	2.38	1.68	1.59
2	A	801	ACO	O5P-C5P	-2.31	1.18	1.23
2	B	801	ACO	C5A-C4A	-2.23	1.35	1.40
2	A	801	ACO	O2B-C2B	2.21	1.48	1.43
2	B	801	ACO	C2A-N3A	2.15	1.35	1.32
2	B	801	ACO	OAP-CAP	-2.14	1.38	1.42
2	A	801	ACO	C5A-C4A	-2.08	1.35	1.40
2	A	801	ACO	P1A-O5B	2.08	1.67	1.59
2	B	801	ACO	C2A-N1A	2.02	1.37	1.33

All (17) bond angle outliers are listed below:

Mol	Chain	Res	Type	Atoms	Z	Observed(°)	Ideal(°)
2	B	801	ACO	C5A-C6A-N6A	8.75	133.64	120.35
2	A	801	ACO	C5A-C6A-N6A	8.04	132.58	120.35
2	B	801	ACO	N6A-C6A-N1A	-6.09	105.94	118.57
2	B	801	ACO	N3A-C2A-N1A	-5.78	119.65	128.68
2	A	801	ACO	N3A-C2A-N1A	-5.68	119.79	128.68
2	A	801	ACO	N6A-C6A-N1A	-5.50	107.16	118.57
2	B	801	ACO	P2A-O3A-P1A	-3.59	120.49	132.83
2	B	801	ACO	C3B-C2B-C1B	3.30	107.20	99.89
2	A	801	ACO	C2P-C3P-N4P	-3.16	105.77	112.42
2	B	801	ACO	C6P-C7P-N8P	-2.78	106.28	111.90
2	B	801	ACO	C7P-C6P-C5P	-2.53	108.14	112.36
2	A	801	ACO	C7P-C6P-C5P	-2.45	108.28	112.36
2	B	801	ACO	C2P-C3P-N4P	-2.44	107.30	112.42
2	A	801	ACO	C6P-C7P-N8P	-2.39	107.07	111.90
2	A	801	ACO	C3B-C2B-C1B	2.22	104.81	99.89
2	B	801	ACO	CDP-CBP-CAP	2.19	112.61	108.82
2	B	801	ACO	O5B-C5B-C4B	-2.12	101.68	108.99

There are no chirality outliers.

All (18) torsion outliers are listed below:

Mol	Chain	Res	Type	Atoms
2	B	801	ACO	CCP-O6A-P2A-O3A
2	B	801	ACO	CCP-O6A-P2A-O5A
2	B	801	ACO	S1P-C2P-C3P-N4P
2	B	801	ACO	C3P-C2P-S1P-C
2	A	801	ACO	C3B-O3B-P3B-O9A

Continued on next page...

Continued from previous page...

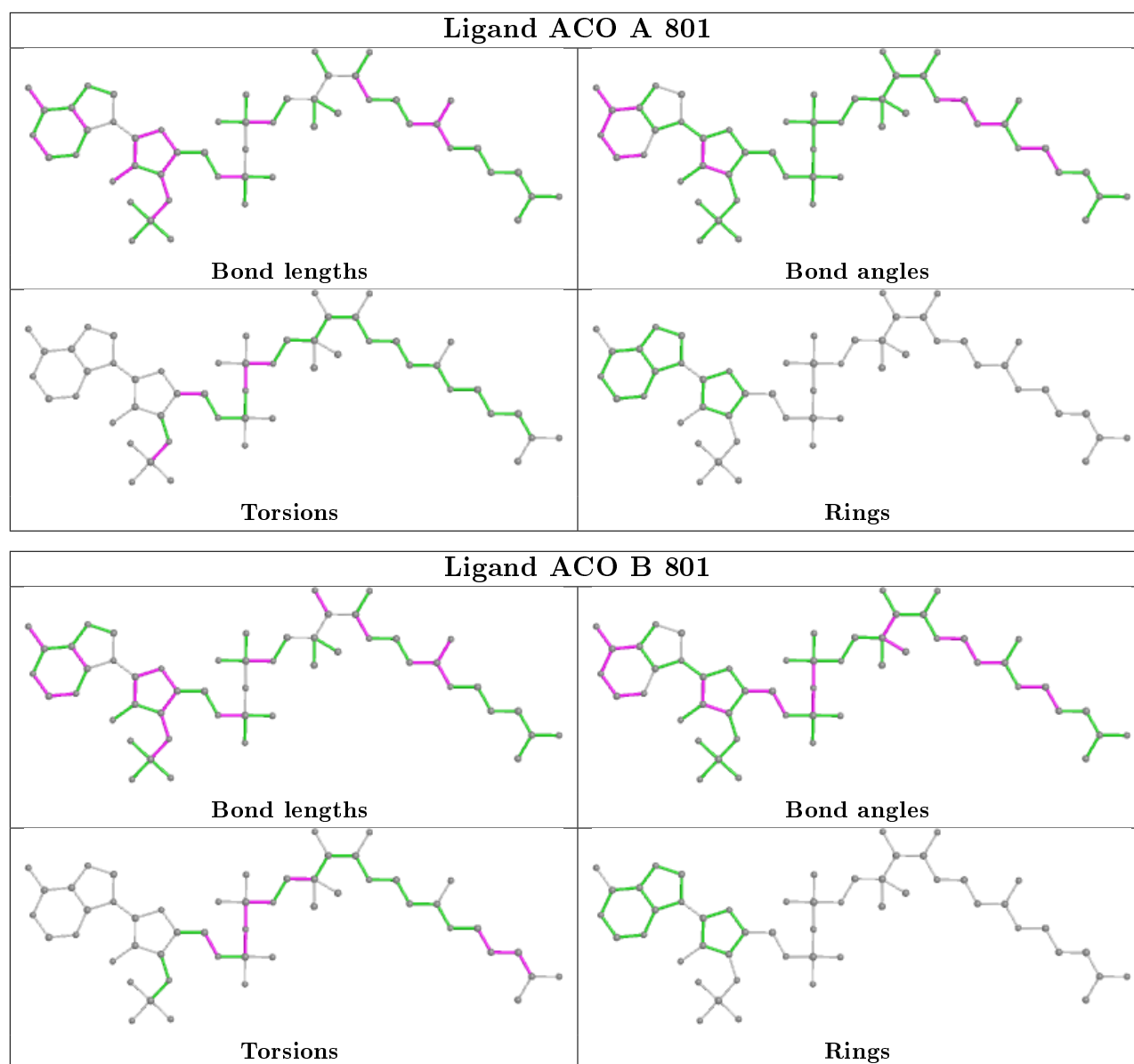
Mol	Chain	Res	Type	Atoms
2	A	801	ACO	CCP-O6A-P2A-O4A
2	B	801	ACO	O-C-S1P-C2P
2	B	801	ACO	CH3-C-S1P-C2P
2	B	801	ACO	C4B-C5B-O5B-P1A
2	B	801	ACO	P2A-O3A-P1A-O5B
2	A	801	ACO	P1A-O3A-P2A-O6A
2	B	801	ACO	CCP-O6A-P2A-O4A
2	A	801	ACO	CCP-O6A-P2A-O5A
2	A	801	ACO	C3B-C4B-C5B-O5B
2	B	801	ACO	CEP-CBP-CCP-O6A
2	B	801	ACO	P1A-O3A-P2A-O5A
2	B	801	ACO	CDP-CBP-CCP-O6A
2	A	801	ACO	CCP-O6A-P2A-O3A

There are no ring outliers.

2 monomers are involved in 6 short contacts:

Mol	Chain	Res	Type	Clashes	Symm-Clashes
2	A	801	ACO	1	0
2	B	801	ACO	5	0

The following is a two-dimensional graphical depiction of Mogul quality analysis of bond lengths, bond angles, torsion angles, and ring geometry for all instances of the Ligand of Interest. In addition, ligands with molecular weight > 250 and outliers as shown on the validation Tables will also be included. For torsion angles, if less than 5% of the Mogul distribution of torsion angles is within 10 degrees of the torsion angle in question, then that torsion angle is considered an outlier. Any bond that is central to one or more torsion angles identified as an outlier by Mogul will be highlighted in the graph. For rings, the root-mean-square deviation (RMSD) between the ring in question and similar rings identified by Mogul is calculated over all ring torsion angles. If the average RMSD is greater than 60 degrees and the minimal RMSD between the ring in question and any Mogul-identified rings is also greater than 60 degrees, then that ring is considered an outlier. The outliers are highlighted in purple. The color gray indicates Mogul did not find sufficient equivalents in the CSD to analyse the geometry.



5.7 Other polymers [i](#)

There are no such residues in this entry.

5.8 Polymer linkage issues [i](#)

There are no chain breaks in this entry.

6 Fit of model and data ⓘ

6.1 Protein, DNA and RNA chains ⓘ

In the following table, the column labelled ‘#RSRZ > 2’ contains the number (and percentage) of RSRZ outliers, followed by percent RSRZ outliers for the chain as percentile scores relative to all X-ray entries and entries of similar resolution. The OWAB column contains the minimum, median, 95th percentile and maximum values of the occupancy-weighted average B-factor per residue. The column labelled ‘Q < 0.9’ lists the number of (and percentage) of residues with an average occupancy less than 0.9.

Mol	Chain	Analysed	<RSRZ>	#RSRZ > 2		OWAB(Å ²)	Q < 0.9
1	A	729/739 (98%)	0.01	24 (3%)	46 43	15, 23, 44, 79	0
1	B	724/739 (97%)	0.22	52 (7%)	15 14	17, 26, 51, 82	0
All	All	1453/1478 (98%)	0.11	76 (5%)	27 24	15, 24, 49, 82	0

All (76) RSRZ outliers are listed below:

Mol	Chain	Res	Type	RSRZ
1	B	591	LEU	7.8
1	B	73	ILE	7.6
1	B	2	THR	6.6
1	A	729	ALA	6.4
1	B	729	ALA	6.0
1	B	72	VAL	5.4
1	B	678	ALA	5.2
1	B	306	ASP	5.2
1	A	357	ALA	5.1
1	A	355	GLU	5.0
1	A	304	THR	4.7
1	A	0	HIS	4.6
1	B	151	SER	4.5
1	B	590	GLU	4.5
1	A	354	ALA	4.2
1	B	681	PRO	4.1
1	B	592	ALA	4.1
1	B	307	ASP	4.0
1	B	688	PRO	4.0
1	A	206	ASP	4.0
1	B	464[A]	PHE	3.9
1	B	3	ASP	3.9
1	A	591	LEU	3.8
1	B	309	THR	3.8

Continued on next page...

Continued from previous page...

Mol	Chain	Res	Type	RSRZ
1	B	310	PHE	3.7
1	B	725	LEU	3.7
1	A	310	PHE	3.7
1	B	684	HIS	3.6
1	B	683	TYR	3.5
1	B	76	LEU	3.4
1	B	384	ASP	3.3
1	A	592	ALA	3.2
1	B	353	ASP	3.2
1	B	692	ASP	3.1
1	B	158	ARG	3.0
1	B	728	ARG	3.0
1	A	309	THR	3.0
1	B	679	GLY	3.0
1	A	75	PRO	3.0
1	B	689	ASN	2.9
1	B	682	GLU	2.9
1	B	672	LEU	2.9
1	B	308	LYS	2.8
1	B	465	LEU	2.8
1	B	463[A]	GLY	2.8
1	B	71	ARG	2.7
1	A	1	MET	2.7
1	A	76	LEU	2.7
1	B	685	ALA	2.6
1	B	75	PRO	2.6
1	A	205	ALA	2.6
1	A	384	ASP	2.6
1	B	358	GLU	2.6
1	B	252	THR	2.6
1	B	34	SER	2.5
1	B	9	ASN	2.5
1	B	687	ALA	2.5
1	A	359	GLY	2.4
1	A	302	ASP	2.4
1	A	118	VAL	2.4
1	B	304	THR	2.3
1	B	305	LYS	2.3
1	B	385	ALA	2.2
1	A	207	THR	2.2
1	A	269	ILE	2.2
1	A	383	THR	2.2

Continued on next page...

Continued from previous page...

Mol	Chain	Res	Type	RSRZ
1	B	152	ASP	2.1
1	B	680	ASP	2.1
1	B	352	SER	2.1
1	B	159	GLY	2.1
1	A	353	ASP	2.1
1	B	727	ALA	2.1
1	A	459	PHE	2.1
1	B	35	PHE	2.1
1	B	5	VAL	2.1
1	B	359	GLY	2.0

6.2 Non-standard residues in protein, DNA, RNA chains [i](#)

There are no non-standard protein/DNA/RNA residues in this entry.

6.3 Carbohydrates [i](#)

There are no carbohydrates in this entry.

6.4 Ligands [i](#)

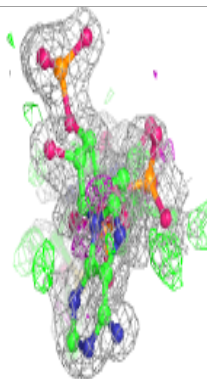
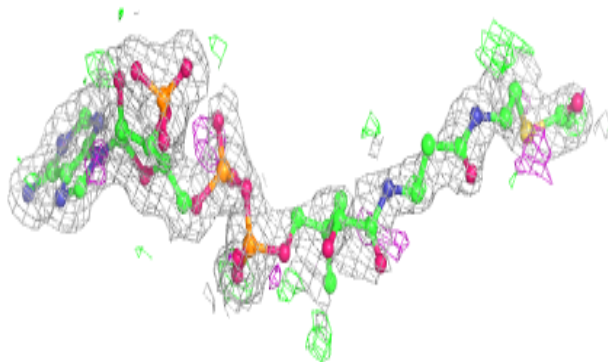
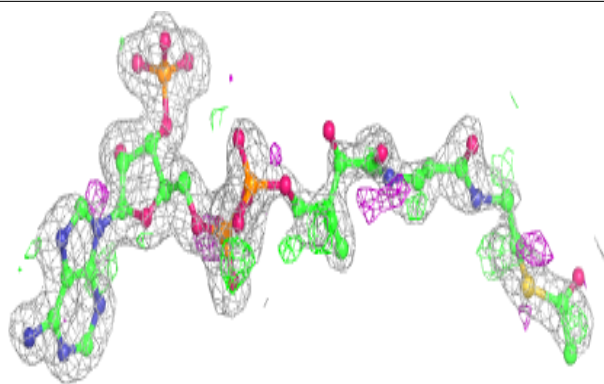
In the following table, the Atoms column lists the number of modelled atoms in the group and the number defined in the chemical component dictionary. The B-factors column lists the minimum, median, 95th percentile and maximum values of B factors of atoms in the group. The column labelled 'Q< 0.9' lists the number of atoms with occupancy less than 0.9.

Mol	Type	Chain	Res	Atoms	RSCC	RSR	B-factors(Å ²)	Q<0.9
4	ACT	A	803	4/4	0.79	0.13	43,57,57,64	0
5	EDO	B	802	4/4	0.87	0.14	36,54,55,57	0
2	ACO	B	801	51/51	0.89	0.16	24,47,82,88	0
3	MG	A	802	1/1	0.90	0.07	29,29,29,29	0
2	ACO	A	801	51/51	0.91	0.13	18,28,38,62	0
3	MG	B	803	1/1	0.96	0.10	30,30,30,30	0

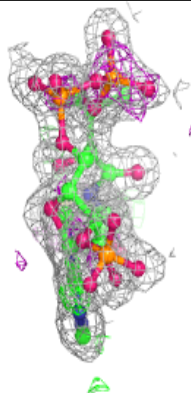
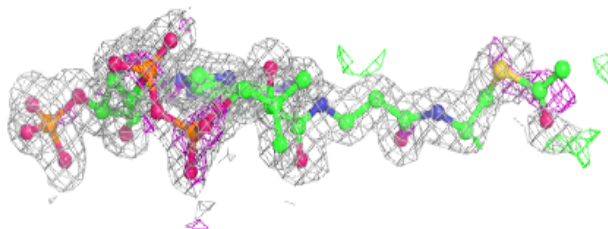
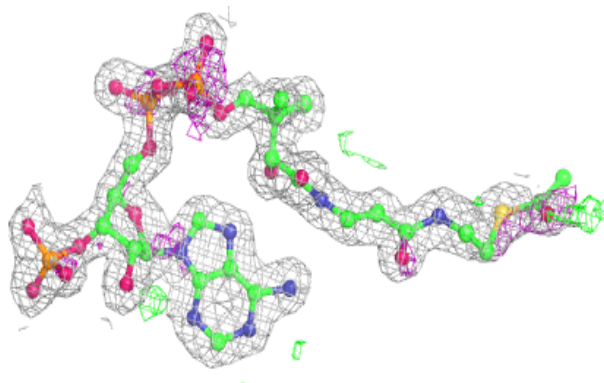
The following is a graphical depiction of the model fit to experimental electron density of all instances of the Ligand of Interest. In addition, ligands with molecular weight > 250 and outliers as shown on the geometry validation Tables will also be included. Each fit is shown from different orientation to approximate a three-dimensional view.

Electron density around ACO B 801:

$2mF_o-DF_c$ (at 0.7 rmsd) in gray
 mF_o-DF_c (at 3 rmsd) in purple (negative)
and green (positive)

**Electron density around ACO A 801:**

$2mF_o-DF_c$ (at 0.7 rmsd) in gray
 mF_o-DF_c (at 3 rmsd) in purple (negative)
and green (positive)



6.5 Other polymers

There are no such residues in this entry.