



Full wwPDB X-ray Structure Validation Report ⓘ

May 25, 2020 – 06:11 am BST

PDB ID : 5AYK
Title : Crystal structure of ERdj5 form I
Authors : Watanabe, S.; Maegawa, K.; Inaba, K.
Deposited on : 2015-08-22
Resolution : 2.25 Å(reported)

This is a Full wwPDB X-ray Structure Validation Report for a publicly released PDB entry.

We welcome your comments at validation@mail.wwpdb.org

A user guide is available at

<https://www.wwpdb.org/validation/2017/XrayValidationReportHelp>

with specific help available everywhere you see the ⓘ symbol.

The following versions of software and data (see [references ⓘ](#)) were used in the production of this report:

MolProbity : 4.02b-467
Mogul : 1.8.5 (274361), CSD as541be (2020)
Xtriage (Phenix) : 1.13
EDS : 2.11
Percentile statistics : 20191225.v01 (using entries in the PDB archive December 25th 2019)
Refmac : 5.8.0158
CCP4 : 7.0.044 (Gargrove)
Ideal geometry (proteins) : Engh & Huber (2001)
Ideal geometry (DNA, RNA) : Parkinson et al. (1996)
Validation Pipeline (wwPDB-VP) : 2.11

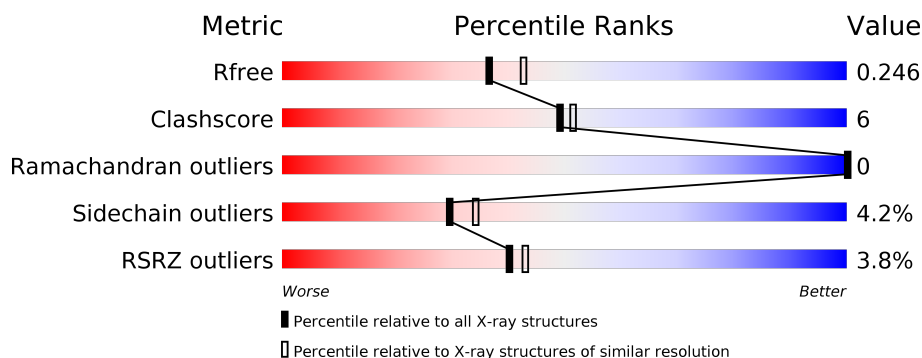
1 Overall quality at a glance

The following experimental techniques were used to determine the structure:

X-RAY DIFFRACTION

The reported resolution of this entry is 2.25 Å.

Percentile scores (ranging between 0-100) for global validation metrics of the entry are shown in the following graphic. The table shows the number of entries on which the scores are based.



Metric	Whole archive (#Entries)	Similar resolution (#Entries, resolution range(Å))
R_{free}	130704	1377 (2.26-2.26)
Clashscore	141614	1487 (2.26-2.26)
Ramachandran outliers	138981	1449 (2.26-2.26)
Sidechain outliers	138945	1450 (2.26-2.26)
RSRZ outliers	127900	1356 (2.26-2.26)

The table below summarises the geometric issues observed across the polymeric chains and their fit to the electron density. The red, orange, yellow and green segments on the lower bar indicate the fraction of residues that contain outliers for ≥ 3 , 2, 1 and 0 types of geometric quality criteria respectively. A grey segment represents the fraction of residues that are not modelled. The numeric value for each fraction is indicated below the corresponding segment, with a dot representing fractions $\leq 5\%$. The upper red bar (where present) indicates the fraction of residues that have poor fit to the electron density. The numeric value is given above the bar.

Mol	Chain	Length	Quality of chain
1	A	783	<div> <div>4%</div> <div>78%</div> <div>16%</div> <div>• 5%</div> </div>

2 Entry composition

There are 4 unique types of molecules in this entry. The entry contains 6061 atoms, of which 0 are hydrogens and 0 are deuteriums.

In the tables below, the ZeroOcc column contains the number of atoms modelled with zero occupancy, the AltConf column contains the number of residues with at least one atom in alternate conformation and the Trace column contains the number of residues modelled with at most 2 atoms.

- Molecule 1 is a protein called DnaJ homolog subfamily C member 10.

Mol	Chain	Residues	Atoms					ZeroOcc	AltConf	Trace
1	A	744	Total	C	N	O	S	0	6	0
			5927	3785	1011	1107	24			

There are 31 discrepancies between the modelled and reference sequences:

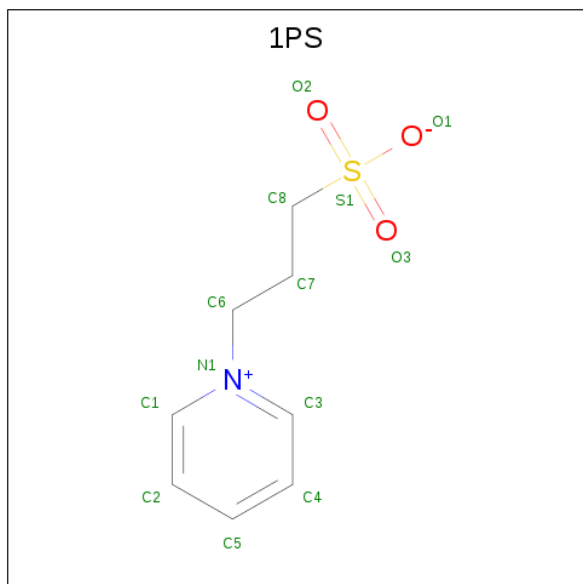
Chain	Residue	Modelled	Actual	Comment	Reference
A	11	MET	-	initiating methionine	UNP Q9DC23
A	12	GLY	-	expression tag	UNP Q9DC23
A	13	SER	-	expression tag	UNP Q9DC23
A	14	SER	-	expression tag	UNP Q9DC23
A	15	HIS	-	expression tag	UNP Q9DC23
A	16	HIS	-	expression tag	UNP Q9DC23
A	17	HIS	-	expression tag	UNP Q9DC23
A	18	HIS	-	expression tag	UNP Q9DC23
A	19	HIS	-	expression tag	UNP Q9DC23
A	20	HIS	-	expression tag	UNP Q9DC23
A	21	SER	-	expression tag	UNP Q9DC23
A	22	SER	-	expression tag	UNP Q9DC23
A	23	GLY	-	expression tag	UNP Q9DC23
A	24	LEU	-	expression tag	UNP Q9DC23
A	25	VAL	-	expression tag	UNP Q9DC23
A	26	PRO	-	expression tag	UNP Q9DC23
A	27	ARG	-	expression tag	UNP Q9DC23
A	28	GLY	-	expression tag	UNP Q9DC23
A	29	SER	-	expression tag	UNP Q9DC23
A	30	HIS	-	expression tag	UNP Q9DC23
A	31	MET	-	expression tag	UNP Q9DC23
A	158	SER	CYS	engineered mutation	UNP Q9DC23
A	161	SER	CYS	engineered mutation	UNP Q9DC23
A	399	VAL	GLY	engineered mutation	UNP Q9DC23
A	419	SER	CYS	engineered mutation	UNP Q9DC23
A	480	SER	CYS	engineered mutation	UNP Q9DC23
A	483	SER	CYS	engineered mutation	UNP Q9DC23

Continued on next page...

Continued from previous page...

Chain	Residue	Modelled	Actual	Comment	Reference
A	588	SER	CYS	engineered mutation	UNP Q9DC23
A	591	SER	CYS	engineered mutation	UNP Q9DC23
A	700	SER	CYS	engineered mutation	UNP Q9DC23
A	703	SER	CYS	engineered mutation	UNP Q9DC23

- Molecule 2 is 3-PYRIDINIUM-1-YLPROPANE-1-SULFONATE (three-letter code: 1PS) (formula: C₈H₁₁NO₃S).



Mol	Chain	Residues	Atoms					ZeroOcc	AltConf
2	A	1	Total	C	N	O	S	0	0
			13	8	1	3	1		

- Molecule 3 is CHLORIDE ION (three-letter code: CL) (formula: Cl).

Mol	Chain	Residues	Atoms		ZeroOcc	AltConf
3	A	1	Total	Cl	0	0
			1	1		

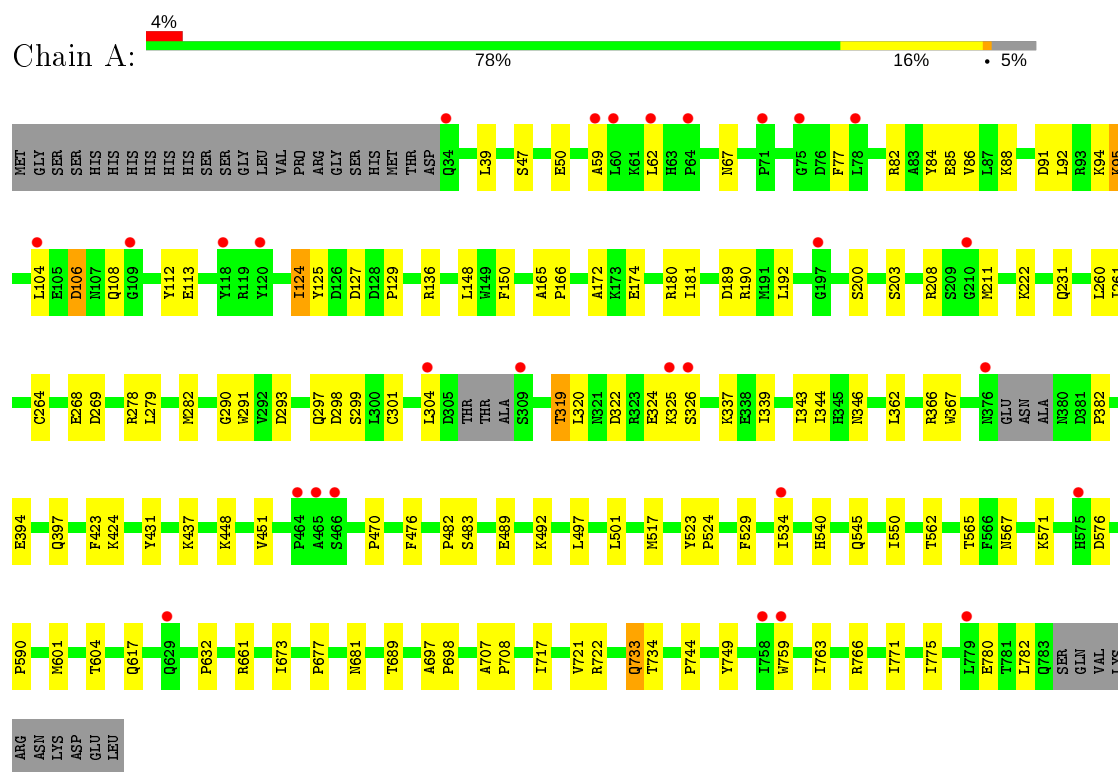
- Molecule 4 is water.

Mol	Chain	Residues	Atoms		ZeroOcc	AltConf
4	A	119	Total	O	0	1
			120	120		

3 Residue-property plots [i](#)

These plots are drawn for all protein, RNA and DNA chains in the entry. The first graphic for a chain summarises the proportions of the various outlier classes displayed in the second graphic. The second graphic shows the sequence view annotated by issues in geometry and electron density. Residues are color-coded according to the number of geometric quality criteria for which they contain at least one outlier: green = 0, yellow = 1, orange = 2 and red = 3 or more. A red dot above a residue indicates a poor fit to the electron density ($RSRZ > 2$). Stretches of 2 or more consecutive residues without any outlier are shown as a green connector. Residues present in the sample, but not in the model, are shown in grey.

- Molecule 1: DnaJ homolog subfamily C member 10



4 Data and refinement statistics

Property	Value	Source
Space group	P 1 21 1	Depositor
Cell constants a, b, c, α , β , γ	91.99 Å 52.97 Å 92.90 Å 90.00° 113.54° 90.00°	Depositor
Resolution (Å)	19.95 – 2.25 46.15 – 2.25	Depositor EDS
% Data completeness (in resolution range)	99.4 (19.95-2.25) 99.4 (46.15-2.25)	Depositor EDS
R_{merge}	(Not available)	Depositor
R_{sym}	0.10	Depositor
$\langle I/\sigma(I) \rangle$ ¹	1.48 (at 2.24 Å)	Xtriage
Refinement program	PHENIX (phenix.refine: 1.9_1692)	Depositor
R, R_{free}	0.214 , 0.243 0.219 , 0.246	Depositor DCC
R_{free} test set	1983 reflections (5.04%)	wwPDB-VP
Wilson B-factor (Å ²)	37.9	Xtriage
Anisotropy	0.308	Xtriage
Bulk solvent k_{sol} (e/Å ³), B_{sol} (Å ²)	0.36 , 49.1	EDS
L-test for twinning ²	$\langle L \rangle = 0.47$, $\langle L^2 \rangle = 0.30$	Xtriage
Estimated twinning fraction	0.025 for l,-k,h	Xtriage
F_o, F_c correlation	0.94	EDS
Total number of atoms	6061	wwPDB-VP
Average B, all atoms (Å ²)	52.0	wwPDB-VP

Xtriage's analysis on translational NCS is as follows: *The largest off-origin peak in the Patterson function is 5.02% of the height of the origin peak. No significant pseudotranslation is detected.*

¹Intensities estimated from amplitudes.

²Theoretical values of $\langle |L| \rangle$, $\langle L^2 \rangle$ for acentric reflections are 0.5, 0.333 respectively for untwinned datasets, and 0.375, 0.2 for perfectly twinned datasets.

5 Model quality [i](#)

5.1 Standard geometry [i](#)

Bond lengths and bond angles in the following residue types are not validated in this section: 1PS, CL

The Z score for a bond length (or angle) is the number of standard deviations the observed value is removed from the expected value. A bond length (or angle) with $|Z| > 5$ is considered an outlier worth inspection. RMSZ is the root-mean-square of all Z scores of the bond lengths (or angles).

Mol	Chain	Bond lengths		Bond angles	
		RMSZ	$\# Z > 5$	RMSZ	$\# Z > 5$
1	A	0.29	0/6086	0.44	0/8268

There are no bond length outliers.

There are no bond angle outliers.

There are no chirality outliers.

There are no planarity outliers.

5.2 Too-close contacts [i](#)

In the following table, the Non-H and H(model) columns list the number of non-hydrogen atoms and hydrogen atoms in the chain respectively. The H(added) column lists the number of hydrogen atoms added and optimized by MolProbity. The Clashes column lists the number of clashes within the asymmetric unit, whereas Symm-Clashes lists symmetry related clashes.

Mol	Chain	Non-H	H(model)	H(added)	Clashes	Symm-Clashes
1	A	5927	0	5622	68	0
2	A	13	0	11	1	0
3	A	1	0	0	0	0
4	A	120	0	0	1	0
All	All	6061	0	5633	68	0

The all-atom clashscore is defined as the number of clashes found per 1000 atoms (including hydrogen atoms). The all-atom clashscore for this structure is 6.

All (68) close contacts within the same asymmetric unit are listed below, sorted by their clash magnitude.

Atom-1	Atom-2	Interatomic distance (Å)	Clash overlap (Å)
1:A:86:VAL:HG23	1:A:92:LEU:HB3	1.69	0.74
1:A:673:ILE:HD11	1:A:722:ARG:NH2	2.03	0.73
1:A:677:PRO:O	1:A:681:ASN:ND2	2.30	0.64
1:A:67[B]:ASN:N	1:A:67[B]:ASN:OD1	2.34	0.61
1:A:529:PHE:HD1	1:A:534:ILE:HD12	1.67	0.60
1:A:562:THR:H	1:A:565:THR:HG1	1.49	0.60
1:A:601:MET:O	1:A:604:THR:HG22	2.02	0.60
1:A:86:VAL:HG21	1:A:104:LEU:HD11	1.82	0.59
1:A:339:ILE:O	1:A:343:ILE:HG12	2.06	0.56
1:A:501:LEU:HD21	1:A:550:ILE:HD13	1.87	0.56
1:A:136:ARG:HA	1:A:192:LEU:HD22	1.87	0.56
1:A:85:GLU:HA	1:A:88:LYS:HD3	1.87	0.55
1:A:367:TRP:CE3	1:A:397:GLN:HB2	2.41	0.55
1:A:489:GLU:OE2	1:A:492:LYS:NZ	2.37	0.54
1:A:344:ILE:HG13	1:A:382:PRO:HB2	1.90	0.54
1:A:424:LYS:NZ	4:A:905:HOH:O	2.39	0.54
1:A:604:THR:HG23	1:A:661:ARG:HH11	1.73	0.53
1:A:82:ARG:O	1:A:86:VAL:HG12	2.08	0.53
1:A:540:HIS:HB3	1:A:545:GLN:NE2	2.25	0.52
1:A:322:ASP:O	1:A:325:LYS:HG2	2.10	0.51
1:A:325:LYS:HG3	1:A:326:SER:H	1.75	0.51
1:A:47:SER:OG	1:A:50:GLU:HG3	2.10	0.51
1:A:301:CYS:HA	1:A:304:LEU:HD13	1.93	0.51
1:A:763:ILE:HG21	1:A:771:ILE:HG23	1.93	0.51
1:A:567[A]:ASN:HA	1:A:571:LYS:HB2	1.92	0.50
1:A:112:TYR:O	2:A:801:1PS:H3	2.11	0.50
1:A:470:PRO:HB2	1:A:501:LEU:HB3	1.94	0.49
1:A:260:LEU:HD21	1:A:279:LEU:HD13	1.95	0.48
1:A:394:GLU:HG3	1:A:448:LYS:HG2	1.95	0.48
1:A:148:LEU:HD13	1:A:208:ARG:HD2	1.95	0.48
1:A:529:PHE:CD1	1:A:534:ILE:HD12	2.46	0.48
1:A:174:GLU:O	1:A:337:LYS:HE3	2.14	0.47
1:A:707:ALA:HB3	1:A:708:PRO:HD3	1.95	0.47
1:A:172:ALA:HA	1:A:181:ILE:HG13	1.97	0.47
1:A:268:GLU:OE1	1:A:269:ASP:N	2.46	0.47
1:A:264:CYS:HG	1:A:291:TRP:HE3	1.61	0.46
1:A:319:THR:H	1:A:324:GLU:CB	2.29	0.45
1:A:717:ILE:HD12	1:A:721:VAL:HB	1.97	0.45
1:A:366:ARG:HD2	1:A:451:VAL:HB	1.98	0.45
1:A:278:ARG:O	1:A:282:MET:HG3	2.17	0.45
1:A:576:ASP:N	1:A:576:ASP:OD1	2.50	0.45
1:A:590:PRO:HB2	1:A:632:PRO:HD3	1.99	0.44

Continued on next page...

Continued from previous page...

Atom-1	Atom-2	Interatomic distance (Å)	Clash overlap (Å)
1:A:200:SER:O	1:A:203:SER:OG	2.29	0.44
1:A:325:LYS:HG3	1:A:326:SER:N	2.32	0.44
1:A:362:LEU:HA	1:A:362:LEU:HD23	1.84	0.44
1:A:771:ILE:O	1:A:775:ILE:HG13	2.17	0.44
1:A:91:ASP:O	1:A:95:LYS:HD2	2.18	0.43
1:A:476:PHE:HB2	1:A:483:SER:HB3	2.00	0.43
1:A:127:ASP:O	1:A:129:PRO:HD3	2.19	0.43
1:A:106:ASP:O	1:A:108:GLN:N	2.50	0.42
1:A:482:PRO:HB2	1:A:524:PRO:HD3	2.01	0.42
1:A:59:ALA:HA	1:A:77:PHE:HE1	1.85	0.42
1:A:697:ALA:HA	1:A:698:PRO:HD3	1.91	0.42
1:A:261:ILE:HA	1:A:290:GLY:O	2.20	0.42
1:A:733:GLN:HG2	1:A:734:THR:H	1.85	0.41
1:A:293:ASP:O	1:A:297:GLN:HG2	2.20	0.41
1:A:604:THR:HG21	1:A:661:ARG:HD2	2.01	0.41
1:A:744:PRO:O	1:A:766:ARG:NH2	2.46	0.41
1:A:304:LEU:CD1	1:A:320:LEU:HD21	2.50	0.41
1:A:124:ILE:HG22	1:A:125:TYR:CD2	2.56	0.41
1:A:165:ALA:HB3	1:A:166:PRO:HD3	2.02	0.41
1:A:523:TYR:HA	1:A:524:PRO:HA	1.75	0.41
1:A:567[B]:ASN:HA	1:A:571:LYS:HB2	2.01	0.41
1:A:733:GLN:HG2	1:A:734:THR:N	2.36	0.41
1:A:749:TYR:HA	1:A:759:TRP:O	2.21	0.40
1:A:304:LEU:HD12	1:A:304:LEU:H	1.86	0.40
1:A:423:PHE:CD2	1:A:431:TYR:HB3	2.56	0.40
1:A:84:TYR:CZ	1:A:88:LYS:HD2	2.57	0.40

There are no symmetry-related clashes.

5.3 Torsion angles [i](#)

5.3.1 Protein backbone [i](#)

In the following table, the Percentiles column shows the percent Ramachandran outliers of the chain as a percentile score with respect to all X-ray entries followed by that with respect to entries of similar resolution.

The Analysed column shows the number of residues for which the backbone conformation was analysed, and the total number of residues.

Mol	Chain	Analysed	Favoured	Allowed	Outliers	Percentiles	
1	A	744/783 (95%)	726 (98%)	18 (2%)	0	100	100

There are no Ramachandran outliers to report.

5.3.2 Protein sidechains ⓘ

In the following table, the Percentiles column shows the percent sidechain outliers of the chain as a percentile score with respect to all X-ray entries followed by that with respect to entries of similar resolution.

The Analysed column shows the number of residues for which the sidechain conformation was analysed, and the total number of residues.

Mol	Chain	Analysed	Rotameric	Outliers	Percentiles	
1	A	626/685 (91%)	600 (96%)	26 (4%)	30	34

All (26) residues with a non-rotameric sidechain are listed below:

Mol	Chain	Res	Type
1	A	39	LEU
1	A	62	LEU
1	A	94	LYS
1	A	95	LYS
1	A	106	ASP
1	A	113	GLU
1	A	124	ILE
1	A	150	PHE
1	A	180	ARG
1	A	189	ASP
1	A	190	ARG
1	A	211	MET
1	A	222	LYS
1	A	231	GLN
1	A	298	ASP
1	A	299	SER
1	A	319	THR
1	A	346	ASN
1	A	437	LYS
1	A	497	LEU
1	A	517	MET
1	A	617	GLN
1	A	689	THR

Continued on next page...

Continued from previous page...

Mol	Chain	Res	Type
1	A	733	GLN
1	A	780	GLU
1	A	782	LEU

Some sidechains can be flipped to improve hydrogen bonding and reduce clashes. All (5) such sidechains are listed below:

Mol	Chain	Res	Type
1	A	152	ASN
1	A	162	HIS
1	A	332	ASN
1	A	617	GLN
1	A	733	GLN

5.3.3 RNA [i](#)

There are no RNA molecules in this entry.

5.4 Non-standard residues in protein, DNA, RNA chains [i](#)

There are no non-standard protein/DNA/RNA residues in this entry.

5.5 Carbohydrates [i](#)

There are no carbohydrates in this entry.

5.6 Ligand geometry [i](#)

Of 2 ligands modelled in this entry, 1 is monoatomic - leaving 1 for Mogul analysis.

In the following table, the Counts columns list the number of bonds (or angles) for which Mogul statistics could be retrieved, the number of bonds (or angles) that are observed in the model and the number of bonds (or angles) that are defined in the Chemical Component Dictionary. The Link column lists molecule types, if any, to which the group is linked. The Z score for a bond length (or angle) is the number of standard deviations the observed value is removed from the expected value. A bond length (or angle) with $|Z| > 2$ is considered an outlier worth inspection. RMSZ is the root-mean-square of all Z scores of the bond lengths (or angles).

Mol	Type	Chain	Res	Link	Bond lengths			Bond angles		
					Counts	RMSZ	$\# Z > 2$	Counts	RMSZ	$\# Z > 2$
2	1PS	A	801	-	13,13,13	1.19	3 (23%)	17,17,17	1.71	3 (17%)

In the following table, the Chirals column lists the number of chiral outliers, the number of chiral centers analysed, the number of these observed in the model and the number defined in the Chemical Component Dictionary. Similar counts are reported in the Torsion and Rings columns. '-' means no outliers of that kind were identified.

Mol	Type	Chain	Res	Link	Chirals	Torsions	Rings
2	1PS	A	801	-	-	6/7/7/7	0/1/1/1

All (3) bond length outliers are listed below:

Mol	Chain	Res	Type	Atoms	Z	Observed(Å)	Ideal(Å)
2	A	801	1PS	C6-N1	-2.39	1.43	1.49
2	A	801	1PS	O3-S1	2.21	1.51	1.45
2	A	801	1PS	O2-S1	2.07	1.51	1.45

All (3) bond angle outliers are listed below:

Mol	Chain	Res	Type	Atoms	Z	Observed(°)	Ideal(°)
2	A	801	1PS	O3-S1-C8	3.84	111.54	106.92
2	A	801	1PS	O1-S1-O3	-3.74	102.15	111.27
2	A	801	1PS	O1-S1-C8	3.55	111.51	105.77

There are no chirality outliers.

All (6) torsion outliers are listed below:

Mol	Chain	Res	Type	Atoms
2	A	801	1PS	C7-C8-S1-O1
2	A	801	1PS	C7-C8-S1-O2
2	A	801	1PS	C7-C6-N1-C3
2	A	801	1PS	C7-C6-N1-C1
2	A	801	1PS	C7-C8-S1-O3
2	A	801	1PS	N1-C6-C7-C8

There are no ring outliers.

1 monomer is involved in 1 short contact:

Mol	Chain	Res	Type	Clashes	Symm-Clashes
2	A	801	1PS	1	0

5.7 Other polymers ⓘ

There are no such residues in this entry.

5.8 Polymer linkage issues ⓘ

There are no chain breaks in this entry.

6 Fit of model and data

6.1 Protein, DNA and RNA chains

In the following table, the column labelled ‘#RSRZ> 2’ contains the number (and percentage) of RSRZ outliers, followed by percent RSRZ outliers for the chain as percentile scores relative to all X-ray entries and entries of similar resolution. The OWAB column contains the minimum, median, 95th percentile and maximum values of the occupancy-weighted average B-factor per residue. The column labelled ‘Q< 0.9’ lists the number of (and percentage) of residues with an average occupancy less than 0.9.

Mol	Chain	Analysed	<RSRZ>	#RSRZ>2	OWAB(Å ²)	Q<0.9
1	A	744/783 (95%)	0.30	28 (3%) 40 43	19, 49, 84, 115	0

All (28) RSRZ outliers are listed below:

Mol	Chain	Res	Type	RSRZ
1	A	465	ALA	5.2
1	A	59	ALA	4.9
1	A	376	ASN	4.5
1	A	75	GLY	4.0
1	A	62	LEU	3.5
1	A	60	LEU	3.4
1	A	464	PRO	3.0
1	A	304	LEU	2.9
1	A	120	TYR	2.9
1	A	309	SER	2.8
1	A	104	LEU	2.5
1	A	118	TYR	2.5
1	A	71	PRO	2.4
1	A	197	GLY	2.4
1	A	466	SER	2.3
1	A	78	LEU	2.3
1	A	64	PRO	2.3
1	A	109	GLY	2.3
1	A	759	TRP	2.2
1	A	210	GLY	2.2
1	A	575[A]	HIS	2.1
1	A	325	LYS	2.1
1	A	534	ILE	2.1
1	A	779	LEU	2.1
1	A	629	GLN	2.1
1	A	326	SER	2.1
1	A	758	ILE	2.0

Continued on next page...

Continued from previous page...

Mol	Chain	Res	Type	RSRZ
1	A	34	GLN	2.0

6.2 Non-standard residues in protein, DNA, RNA chains [i](#)

There are no non-standard protein/DNA/RNA residues in this entry.

6.3 Carbohydrates [i](#)

There are no carbohydrates in this entry.

6.4 Ligands [i](#)

In the following table, the Atoms column lists the number of modelled atoms in the group and the number defined in the chemical component dictionary. The B-factors column lists the minimum, median, 95th percentile and maximum values of B factors of atoms in the group. The column labelled 'Q< 0.9' lists the number of atoms with occupancy less than 0.9.

Mol	Type	Chain	Res	Atoms	RSCC	RSR	B-factors(Å ²)	Q<0.9
2	1PS	A	801	13/13	0.89	0.21	56,57,95,96	0
3	CL	A	802	1/1	0.89	0.25	77,77,77,77	0

6.5 Other polymers [i](#)

There are no such residues in this entry.