



# wwPDB X-ray Structure Validation Summary Report ⓘ

Nov 24, 2021 – 01:13 pm GMT

PDB ID : 7AZ8  
Title : DNA polymerase sliding clamp from Escherichia coli with peptide 43 bound  
Authors : Monsarrat, C.; Compain, G.; Andre, C.; Martiel, I.; Engilberge, S.; Olieric, V.; Wolff, P.; Brillet, K.; Landolfo, M.; Silva da Veiga, C.; Wagner, J.; Guichard, G.; Burnouf, D.Y.  
Deposited on : 2020-11-16  
Resolution : 1.61 Å(reported)

This is a wwPDB X-ray Structure Validation Summary Report for a publicly released PDB entry.

We welcome your comments at [validation@mail.wwpdb.org](mailto:validation@mail.wwpdb.org)

A user guide is available at

<https://www.wwpdb.org/validation/2017/XrayValidationReportHelp>

with specific help available everywhere you see the ⓘ symbol.

---

The following versions of software and data (see [references ⓘ](#)) were used in the production of this report:

MolProbity : 4.02b-467  
Mogul : 1.8.4 (270009), CSD as541be (2020)  
Xtriage (Phenix) : 1.13  
EDS : 2.23.2  
buster-report : 1.1.7 (2018)  
Percentile statistics : 20191225.v01 (using entries in the PDB archive December 25th 2019)  
Refmac : 5.8.0267  
CCP4 : 7.1.010 (Gargrove)  
Ideal geometry (proteins) : Engh & Huber (2001)  
Ideal geometry (DNA, RNA) : Parkinson et al. (1996)  
Validation Pipeline (wwPDB-VP) : 2.23.2

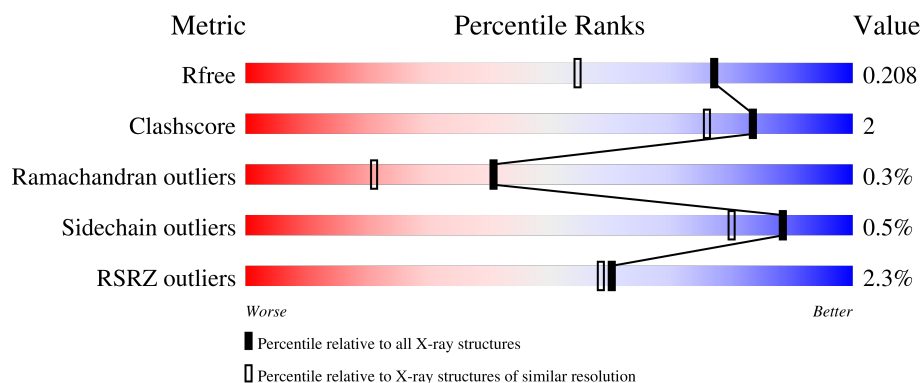
# 1 Overall quality at a glance

The following experimental techniques were used to determine the structure:

*X-RAY DIFFRACTION*

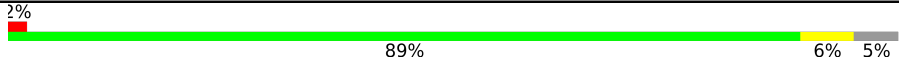



The reported resolution of this entry is 1.61 Å.

Percentile scores (ranging between 0-100) for global validation metrics of the entry are shown in the following graphic. The table shows the number of entries on which the scores are based.



Metric	Whole archive (#Entries)	Similar resolution (#Entries, resolution range(Å))
$R_{free}$	130704	4693 (1.64-1.60)
Clashscore	141614	5002 (1.64-1.60)
Ramachandran outliers	138981	4888 (1.64-1.60)
Sidechain outliers	138945	4887 (1.64-1.60)
RSRZ outliers	127900	4609 (1.64-1.60)

The table below summarises the geometric issues observed across the polymeric chains and their fit to the electron density. The red, orange, yellow and green segments of the lower bar indicate the fraction of residues that contain outliers for  $\geq 3$ , 2, 1 and 0 types of geometric quality criteria respectively. A grey segment represents the fraction of residues that are not modelled. The numeric value for each fraction is indicated below the corresponding segment, with a dot representing fractions  $\leq 5\%$ . The upper red bar (where present) indicates the fraction of residues that have poor fit to the electron density. The numeric value is given above the bar.

Mol	Chain	Length	Quality of chain
1	A	386	
1	B	386	
2	H	7	
2	I	7	

## 2 Entry composition

There are 8 unique types of molecules in this entry. The entry contains 7170 atoms, of which 119 are hydrogens and 0 are deuteriums.

In the tables below, the ZeroOcc column contains the number of atoms modelled with zero occupancy, the AltConf column contains the number of residues with at least one atom in alternate conformation and the Trace column contains the number of residues modelled with at most 2 atoms.

- Molecule 1 is a protein called Beta sliding clamp.

Mol	Chain	Residues	Atoms					ZeroOcc	AltConf	Trace
1	A	366	Total	C	N	O	S	0	14	0
			2919	1839	509	550	21			
1	B	365	Total	C	N	O	S	0	7	0
			2878	1810	500	548	20			

There are 40 discrepancies between the modelled and reference sequences:

Chain	Residue	Modelled	Actual	Comment	Reference
A	-19	MET	-	initiating methionine	UNP A0A073FMV0
A	-18	GLY	-	expression tag	UNP A0A073FMV0
A	-17	SER	-	expression tag	UNP A0A073FMV0
A	-16	SER	-	expression tag	UNP A0A073FMV0
A	-15	HIS	-	expression tag	UNP A0A073FMV0
A	-14	HIS	-	expression tag	UNP A0A073FMV0
A	-13	HIS	-	expression tag	UNP A0A073FMV0
A	-12	HIS	-	expression tag	UNP A0A073FMV0
A	-11	HIS	-	expression tag	UNP A0A073FMV0
A	-10	HIS	-	expression tag	UNP A0A073FMV0
A	-9	SER	-	expression tag	UNP A0A073FMV0
A	-8	SER	-	expression tag	UNP A0A073FMV0
A	-7	GLY	-	expression tag	UNP A0A073FMV0
A	-6	LEU	-	expression tag	UNP A0A073FMV0
A	-5	VAL	-	expression tag	UNP A0A073FMV0
A	-4	PRO	-	expression tag	UNP A0A073FMV0
A	-3	ARG	-	expression tag	UNP A0A073FMV0
A	-2	GLY	-	expression tag	UNP A0A073FMV0
A	-1	SER	-	expression tag	UNP A0A073FMV0
A	0	HIS	-	expression tag	UNP A0A073FMV0
B	-19	MET	-	initiating methionine	UNP A0A073FMV0
B	-18	GLY	-	expression tag	UNP A0A073FMV0
B	-17	SER	-	expression tag	UNP A0A073FMV0
B	-16	SER	-	expression tag	UNP A0A073FMV0
B	-15	HIS	-	expression tag	UNP A0A073FMV0

*Continued on next page...*

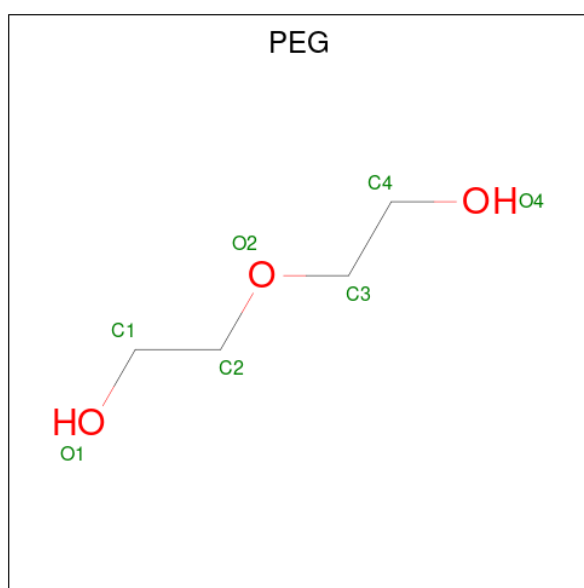
Continued from previous page...

Chain	Residue	Modelled	Actual	Comment	Reference
B	-14	HIS	-	expression tag	UNP A0A073FMV0
B	-13	HIS	-	expression tag	UNP A0A073FMV0
B	-12	HIS	-	expression tag	UNP A0A073FMV0
B	-11	HIS	-	expression tag	UNP A0A073FMV0
B	-10	HIS	-	expression tag	UNP A0A073FMV0
B	-9	SER	-	expression tag	UNP A0A073FMV0
B	-8	SER	-	expression tag	UNP A0A073FMV0
B	-7	GLY	-	expression tag	UNP A0A073FMV0
B	-6	LEU	-	expression tag	UNP A0A073FMV0
B	-5	VAL	-	expression tag	UNP A0A073FMV0
B	-4	PRO	-	expression tag	UNP A0A073FMV0
B	-3	ARG	-	expression tag	UNP A0A073FMV0
B	-2	GLY	-	expression tag	UNP A0A073FMV0
B	-1	SER	-	expression tag	UNP A0A073FMV0
B	0	HIS	-	expression tag	UNP A0A073FMV0

- Molecule 2 is a protein called Peptide 43.

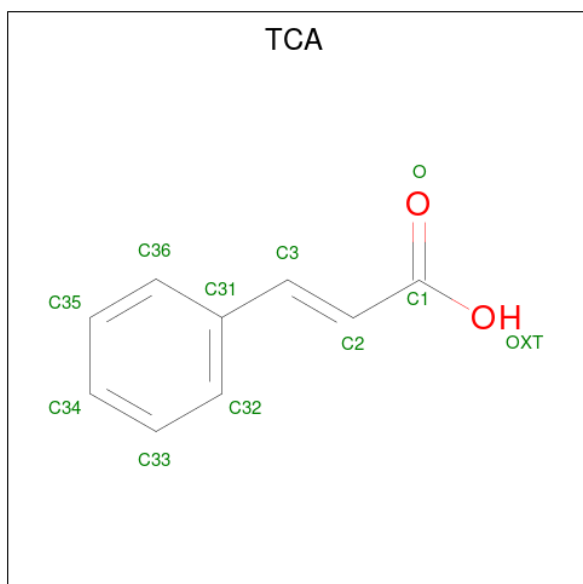
Mol	Chain	Residues	Atoms				ZeroOcc	AltConf	Trace
2	H	5	Total	C	N	O	0	0	0
			43	30	5	8			
2	I	5	Total	C	N	O	0	0	0
			43	30	5	8			

- Molecule 3 is DI(HYDROXYETHYL)ETHER (three-letter code: PEG) (formula: C<sub>4</sub>H<sub>10</sub>O<sub>3</sub>).



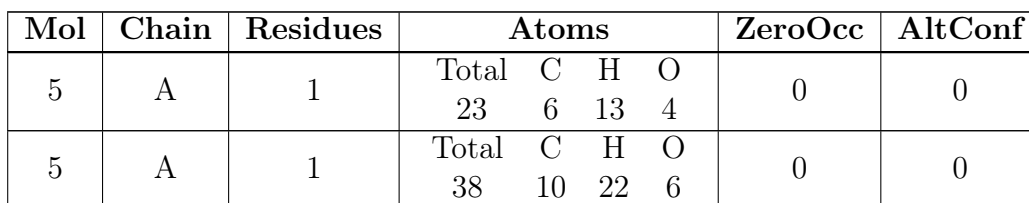
Mol	Chain	Residues	Atoms	ZeroOcc	AltConf
3	A	1	Total C H O 17 4 10 3	0	0
3	A	1	Total C H O 17 4 10 3	0	0
3	A	1	Total C H O 17 4 10 3	0	0
3	A	1	Total C H O 17 4 10 3	0	0
3	B	1	Total C H O 17 4 10 3	0	0
3	B	1	Total C H O 17 4 10 3	0	0

- Molecule 4 is PHENYLETHYLENECARBOXYLIC ACID (three-letter code: TCA) (formula:  $C_9H_8O_2$ ) (labeled as "Ligand of Interest" by depositor).



Mol	Chain	Residues	Atoms	ZeroOcc	AltConf
4	A	1	Total C O 10 9 1	0	0
4	B	1	Total C O 10 9 1	0	0

- Molecule 5 is PENTAETHYLENE GLYCOL (three-letter code: 1PE) (formula:  $C_{10}H_{22}O_6$ ) (labeled as "Ligand of Interest" by depositor).



- GOL
- 
- The diagram shows the chemical structure of 1,2,3-propanetriol (glycerol). It consists of a three-carbon chain. The first carbon (C1) is bonded to a hydroxyl group (HO) and two hydrogens (H). The second carbon (C2) is bonded to two hydroxyl groups (OH) and one hydrogen (H). The third carbon (C3) is bonded to a hydroxyl group (OH) and two hydrogens (H). The atoms are labeled in green: C1, C2, C3, O1, O2, O3. The hydrogens are shown in red.

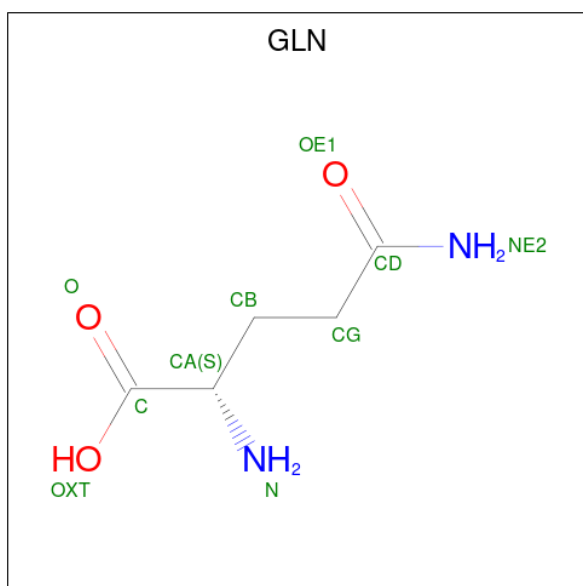
Mol	Chain	Residues	Atoms	ZeroOcc	AltConf
6	A	1	Total C H O 14 3 8 3	0	0
6	B	1	Total C O 6 3 3	0	0



Continued from previous page...

Mol	Chain	Residues	Atoms				ZeroOcc	AltConf
6	B	1	Total	C	O		0	0
			6	3	3			
6	B	1	Total	C	H	O	0	0
			14	3	8	3		
6	B	1	Total	C	H	O	0	0
			14	3	8	3		

- Molecule 7 is GLUTAMINE (three-letter code: GLN) (formula:  $C_5H_{10}N_2O_3$ ) (labeled as "Ligand of Interest" by depositor).



Mol	Chain	Residues	Atoms				ZeroOcc	AltConf
7	H	1	Total	C	N	O	0	0
			9	5	2	2		
7	I	1	Total	C	N	O	0	0
			9	5	2	2		

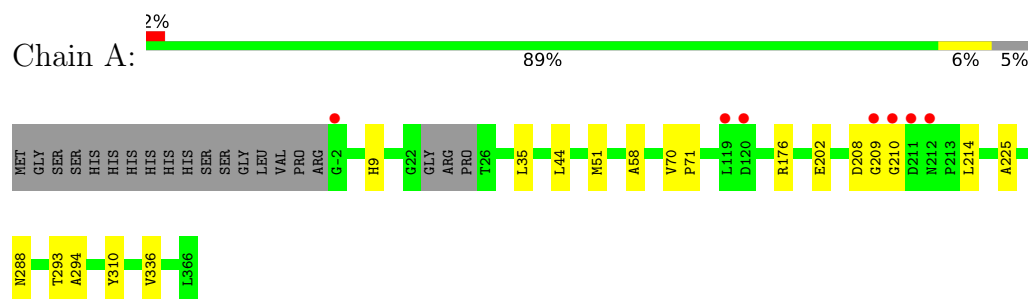
- Molecule 8 is water.

Mol	Chain	Residues	Atoms		ZeroOcc	AltConf
8	A	471	Total	O	0	15
			486	486		
8	B	495	Total	O	0	15
			510	510		
8	H	16	Total	O	0	0
			16	16		
8	I	20	Total	O	0	0
			20	20		

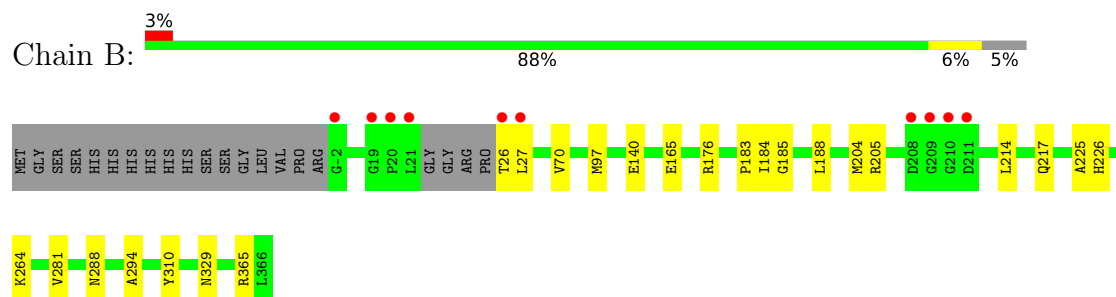
### 3 Residue-property plots

These plots are drawn for all protein, RNA, DNA and oligosaccharide chains in the entry. The first graphic for a chain summarises the proportions of the various outlier classes displayed in the second graphic. The second graphic shows the sequence view annotated by issues in geometry and electron density. Residues are color-coded according to the number of geometric quality criteria for which they contain at least one outlier: green = 0, yellow = 1, orange = 2 and red = 3 or more. A red dot above a residue indicates a poor fit to the electron density ( $RSRZ > 2$ ). Stretches of 2 or more consecutive residues without any outlier are shown as a green connector. Residues present in the sample, but not in the model, are shown in grey.

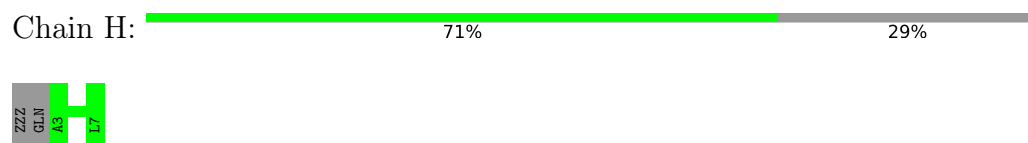
- Molecule 1: Beta sliding clamp



- Molecule 1: Beta sliding clamp



- Molecule 2: Peptide 43



- Molecule 2: Peptide 43





## 4 Data and refinement statistics

Property	Value	Source
Space group	P 1	Depositor
Cell constants a, b, c, $\alpha$ , $\beta$ , $\gamma$	63.81Å 64.73Å 70.68Å 106.54° 99.87° 117.25°	Depositor
Resolution (Å)	54.74 – 1.61 54.74 – 1.61	Depositor EDS
% Data completeness (in resolution range)	75.1 (54.74-1.61) 75.0 (54.74-1.61)	Depositor EDS
$R_{merge}$	(Not available)	Depositor
$R_{sym}$	(Not available)	Depositor
$\langle I/\sigma(I) \rangle$ <sup>1</sup>	1.01 (at 1.61Å)	Xtriage
Refinement program	BUSTER 2.10.3	Depositor
R, $R_{free}$	0.178 , 0.205 0.178 , 0.208	Depositor DCC
$R_{free}$ test set	4181 reflections (4.79%)	wwPDB-VP
Wilson B-factor (Å <sup>2</sup> )	22.0	Xtriage
Anisotropy	0.004	Xtriage
Bulk solvent $k_{sol}$ (e/Å <sup>3</sup> ), $B_{sol}$ (Å <sup>2</sup> )	(Not available) , (Not available)	EDS
L-test for twinning <sup>2</sup>	$\langle  L  \rangle = 0.51$ , $\langle L^2 \rangle = 0.34$	Xtriage
Estimated twinning fraction	0.136 for k,h,-h-k-l	Xtriage
$F_o, F_c$ correlation	0.97	EDS
Total number of atoms	7170	wwPDB-VP
Average B, all atoms (Å <sup>2</sup> )	29.0	wwPDB-VP

Xtriage's analysis on translational NCS is as follows: *The largest off-origin peak in the Patterson function is 6.16% of the height of the origin peak. No significant pseudotranslation is detected.*

<sup>1</sup>Intensities estimated from amplitudes.

<sup>2</sup>Theoretical values of  $\langle |L| \rangle$ ,  $\langle L^2 \rangle$  for acentric reflections are 0.5, 0.333 respectively for untwinned datasets, and 0.375, 0.2 for perfectly twinned datasets.

## 5 Model quality [i](#)

### 5.1 Standard geometry [i](#)

Bond lengths and bond angles in the following residue types are not validated in this section: 1PE, GOL, TCA, PEG, ALC

The Z score for a bond length (or angle) is the number of standard deviations the observed value is removed from the expected value. A bond length (or angle) with  $|Z| > 5$  is considered an outlier worth inspection. RMSZ is the root-mean-square of all Z scores of the bond lengths (or angles).

Mol	Chain	Bond lengths		Bond angles	
		RMSZ	$\# Z  > 5$	RMSZ	$\# Z  > 5$
1	A	0.50	0/2995	0.65	0/4051
1	B	0.51	0/2939	0.65	0/3976
2	H	0.61	0/32	0.71	0/42
2	I	0.65	0/32	0.62	0/42
All	All	0.51	0/5998	0.65	0/8111

There are no bond length outliers.

There are no bond angle outliers.

There are no chirality outliers.

There are no planarity outliers.

### 5.2 Too-close contacts [i](#)

In the following table, the Non-H and H(model) columns list the number of non-hydrogen atoms and hydrogen atoms in the chain respectively. The H(added) column lists the number of hydrogen atoms added and optimized by MolProbity. The Clashes column lists the number of clashes within the asymmetric unit, whereas Symm-Clashes lists symmetry-related clashes.

Mol	Chain	Non-H	H(model)	H(added)	Clashes	Symm-Clashes
1	A	2919	0	2957	16	0
1	B	2878	0	2891	13	0
2	H	43	0	47	0	0
2	I	43	0	47	1	0
3	A	28	40	40	2	0
3	B	14	20	20	3	0
4	A	10	0	7	0	0
4	B	10	0	7	0	0
5	A	26	35	35	0	0

*Continued on next page...*

*Continued from previous page...*

Mol	Chain	Non-H	H(model)	H(added)	Clashes	Symm-Clashes
6	A	6	8	8	0	0
6	B	24	16	32	0	0
7	H	9	0	7	0	0
7	I	9	0	7	0	0
8	A	486	0	0	1	0
8	B	510	0	0	0	0
8	H	16	0	0	0	0
8	I	20	0	0	0	0
All	All	7051	119	6105	29	0

The all-atom clashscore is defined as the number of clashes found per 1000 atoms (including hydrogen atoms). The all-atom clashscore for this structure is 2.

The worst 5 of 29 close contacts within the same asymmetric unit are listed below, sorted by their clash magnitude.

Atom-1	Atom-2	Interatomic distance (Å)	Clash overlap (Å)
1:B:183:PRO:HB2	3:B:401:PEG:H31	1.80	0.64
1:B:26:THR:HG23	1:B:27:LEU:H	1.63	0.62
1:B:70:VAL:HG11	1:B:97:MET:SD	2.42	0.59
1:A:51:MET:CE	1:A:202:GLU:HG3	2.32	0.59
1:B:365:ARG:HB2	2:I:3:ALC:HZ3	1.84	0.57

There are no symmetry-related clashes.

## 5.3 Torsion angles [i](#)

### 5.3.1 Protein backbone [i](#)

In the following table, the Percentiles column shows the percent Ramachandran outliers of the chain as a percentile score with respect to all X-ray entries followed by that with respect to entries of similar resolution.

The Analysed column shows the number of residues for which the backbone conformation was analysed, and the total number of residues.

Mol	Chain	Analysed	Favoured	Allowed	Outliers	Percentiles	
1	A	376/386 (97%)	367 (98%)	7 (2%)	2 (0%)	29	11
1	B	368/386 (95%)	360 (98%)	8 (2%)	0	100	100
2	H	3/7 (43%)	3 (100%)	0	0	100	100

*Continued on next page...*

*Continued from previous page...*

Mol	Chain	Analysed	Favoured	Allowed	Outliers	Percentiles	
2	I	3/7 (43%)	3 (100%)	0	0	100	100
All	All	750/786 (95%)	733 (98%)	15 (2%)	2 (0%)	41	21

All (2) Ramachandran outliers are listed below:

Mol	Chain	Res	Type
1	A	208	ASP
1	A	210	GLY

### 5.3.2 Protein sidechains ⓘ

In the following table, the Percentiles column shows the percent sidechain outliers of the chain as a percentile score with respect to all X-ray entries followed by that with respect to entries of similar resolution.

The Analysed column shows the number of residues for which the sidechain conformation was analysed, and the total number of residues.

Mol	Chain	Analysed	Rotameric	Outliers	Percentiles	
1	A	325/330 (98%)	324 (100%)	1 (0%)	92	86
1	B	319/330 (97%)	317 (99%)	2 (1%)	86	76
2	H	4/5 (80%)	4 (100%)	0	100	100
2	I	4/5 (80%)	4 (100%)	0	100	100
All	All	652/670 (97%)	649 (100%)	3 (0%)	88	80

All (3) residues with a non-rotameric sidechain are listed below:

Mol	Chain	Res	Type
1	A	176	ARG
1	B	176	ARG
1	B	205	ARG

Sometimes sidechains can be flipped to improve hydrogen bonding and reduce clashes. 5 of 7 such sidechains are listed below:

Mol	Chain	Res	Type
1	B	221	ASN
1	B	226	HIS
1	B	335	ASN
1	B	288	ASN

*Continued on next page...*

*Continued from previous page...*

Mol	Chain	Res	Type
1	B	191	HIS

### 5.3.3 RNA [i](#)

There are no RNA molecules in this entry.

## 5.4 Non-standard residues in protein, DNA, RNA chains [i](#)

2 non-standard protein/DNA/RNA residues are modelled in this entry.

There are no bond length outliers.

There are no bond angle outliers.

There are no chirality outliers.

There are no torsion outliers.

There are no ring outliers.

No monomer is involved in short contacts.

## 5.5 Carbohydrates [i](#)

There are no monosaccharides in this entry.

## 5.6 Ligand geometry [i](#)

17 ligands are modelled in this entry.

There are no bond length outliers.

There are no bond angle outliers.

There are no chirality outliers.

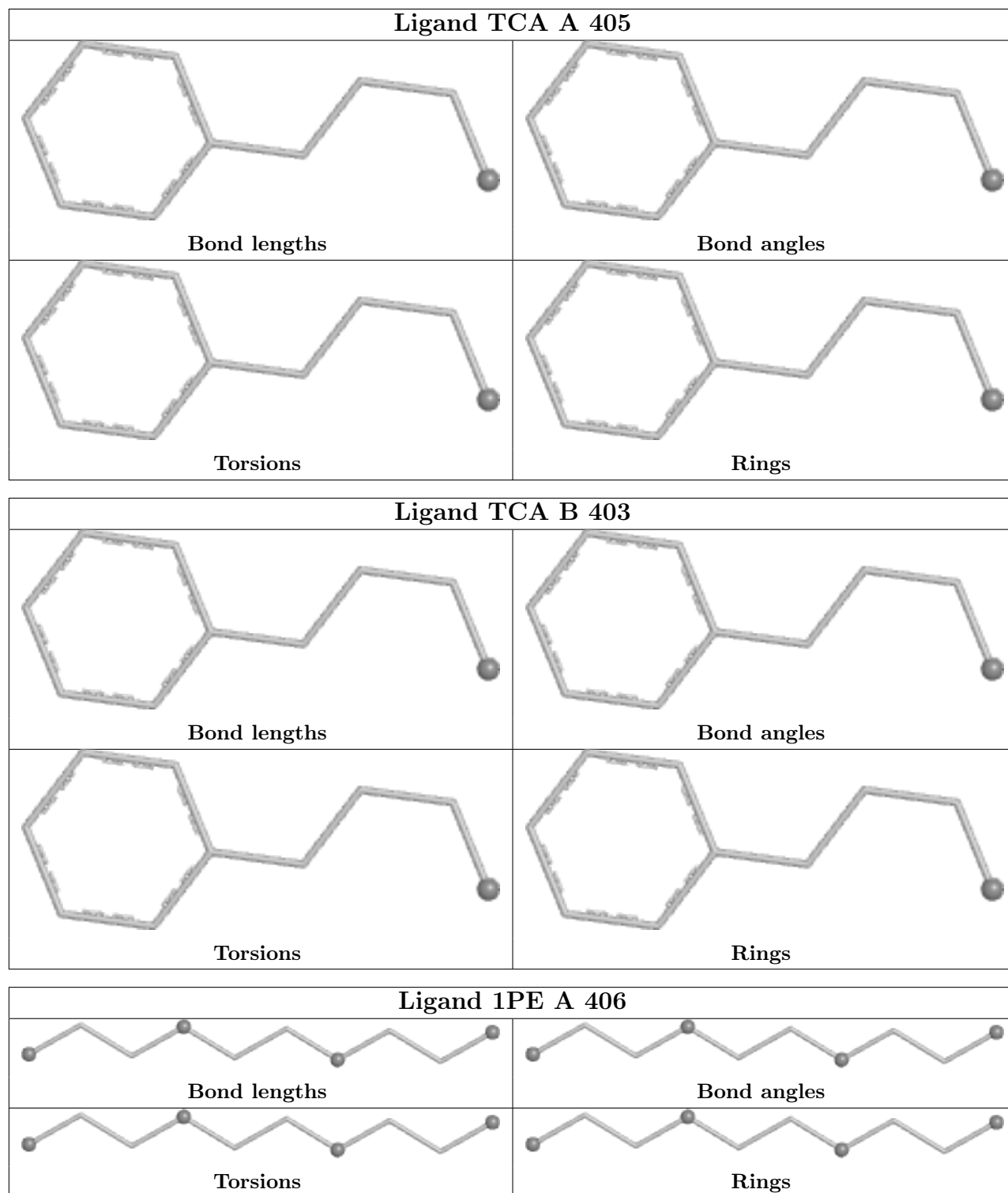
There are no torsion outliers.

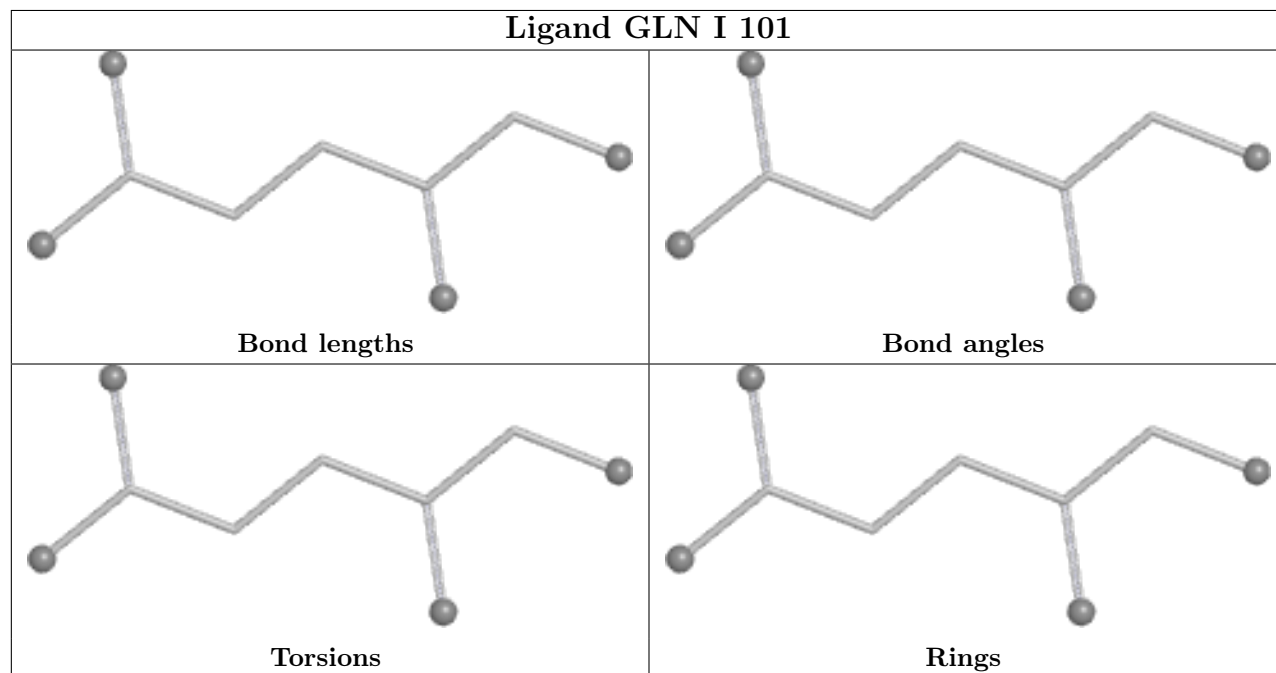
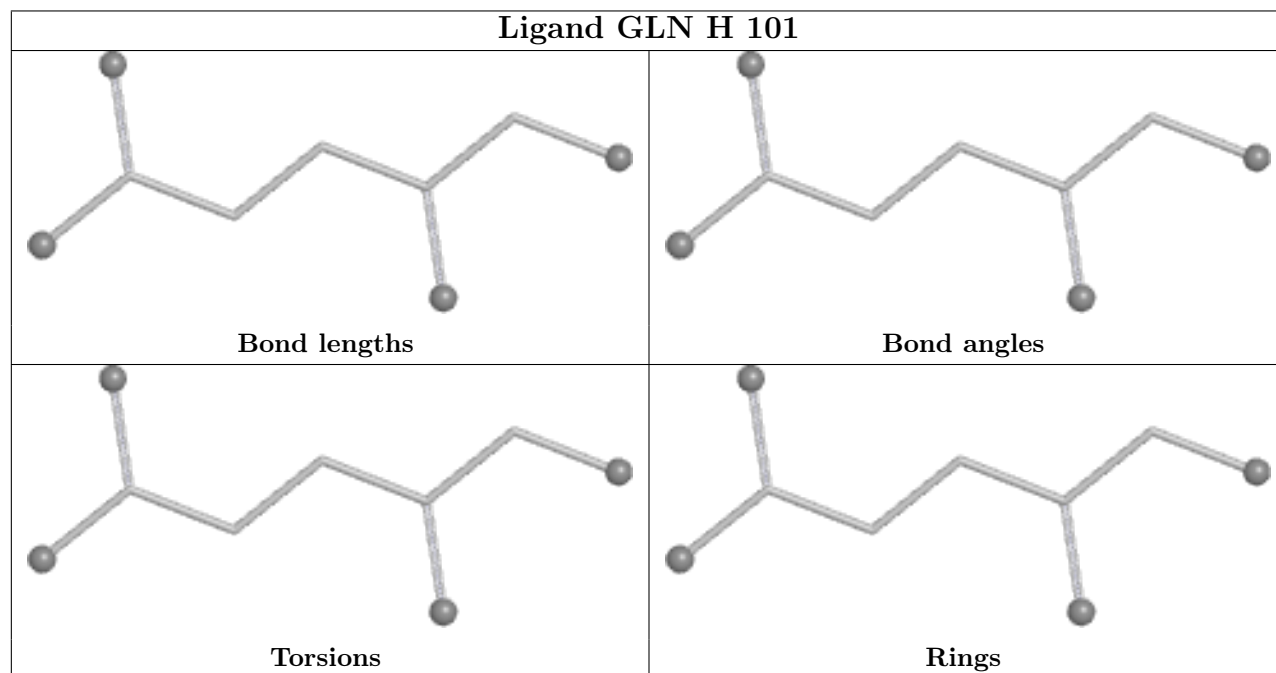
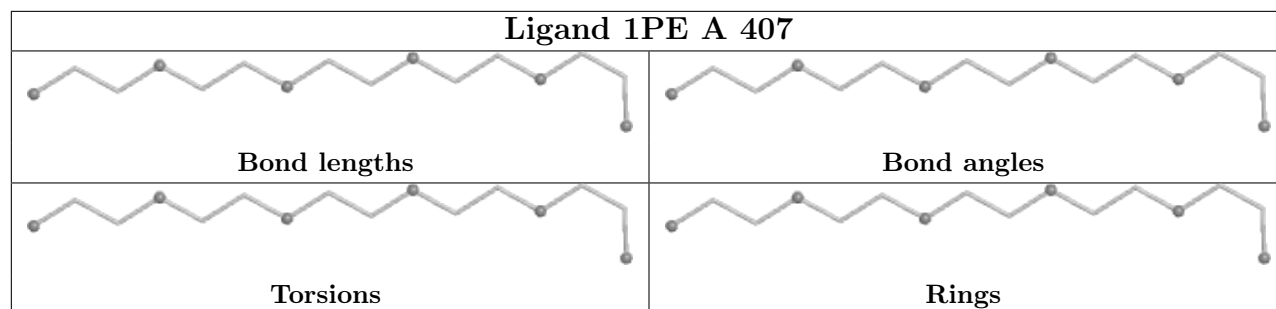
There are no ring outliers.

No monomer is involved in short contacts.

The following is a two-dimensional graphical depiction of Mogul quality analysis of bond lengths, bond angles, torsion angles, and ring geometry for all instances of the Ligand of Interest. In addition, ligands with molecular weight > 250 and outliers as shown on the validation Tables will also be included. For torsion angles, if less than 5% of the Mogul distribution of torsion angles is within 10 degrees of the torsion angle in question, then that torsion angle is considered an outlier.

Any bond that is central to one or more torsion angles identified as an outlier by Mogul will be highlighted in the graph. For rings, the root-mean-square deviation (RMSD) between the ring in question and similar rings identified by Mogul is calculated over all ring torsion angles. If the average RMSD is greater than 60 degrees and the minimal RMSD between the ring in question and any Mogul-identified rings is also greater than 60 degrees, then that ring is considered an outlier. The outliers are highlighted in purple. The color gray indicates Mogul did not find sufficient equivalents in the CSD to analyse the geometry.





## 5.7 Other polymers [i](#)

There are no such residues in this entry.

## 5.8 Polymer linkage issues [i](#)

There are no chain breaks in this entry.



## 6 Fit of model and data [i](#)

### 6.1 Protein, DNA and RNA chains [i](#)

In the following table, the column labelled ‘#RSRZ> 2’ contains the number (and percentage) of RSRZ outliers, followed by percent RSRZ outliers for the chain as percentile scores relative to all X-ray entries and entries of similar resolution. The OWAB column contains the minimum, median, 95<sup>th</sup> percentile and maximum values of the occupancy-weighted average B-factor per residue. The column labelled ‘Q< 0.9’ lists the number of (and percentage) of residues with an average occupancy less than 0.9.

Mol	Chain	Analysed	<RSRZ>	#RSRZ>2	OWAB(Å <sup>2</sup> )	Q<0.9
1	A	366/386 (94%)	-0.11	7 (1%) 66 65	14, 25, 47, 71	0
1	B	365/386 (94%)	-0.12	10 (2%) 54 51	14, 24, 46, 61	0
2	H	4/7 (57%)	-0.26	0 100 100	25, 27, 31, 34	0
2	I	4/7 (57%)	-0.06	0 100 100	22, 26, 31, 33	0
All	All	739/786 (94%)	-0.12	17 (2%) 60 58	14, 24, 46, 71	0

The worst 5 of 17 RSRZ outliers are listed below:

Mol	Chain	Res	Type	RSRZ
1	B	209	GLY	6.7
1	A	119	LEU	4.6
1	B	211	ASP	4.1
1	B	20	PRO	4.0
1	B	27	LEU	3.9

### 6.2 Non-standard residues in protein, DNA, RNA chains [i](#)

In the following table, the Atoms column lists the number of modelled atoms in the group and the number defined in the chemical component dictionary. The B-factors column lists the minimum, median, 95<sup>th</sup> percentile and maximum values of B factors of atoms in the group. The column labelled ‘Q< 0.9’ lists the number of atoms with occupancy less than 0.9.

Mol	Type	Chain	Res	Atoms	RSCC	RSR	B-factors(Å <sup>2</sup> )	Q<0.9
2	ALC	I	3	11/12	0.95	0.12	16,21,26,27	0
2	ALC	H	3	11/12	0.96	0.11	17,22,30,30	0

### 6.3 Carbohydrates [i](#)

There are no monosaccharides in this entry.

## 6.4 Ligands ⓘ

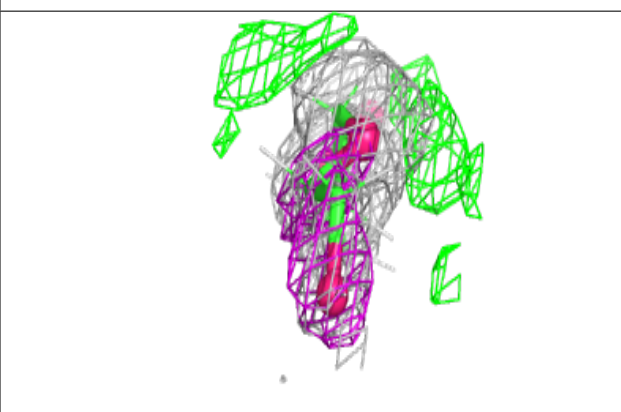
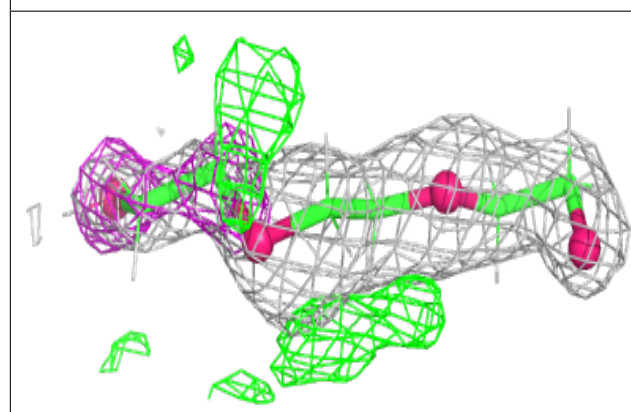
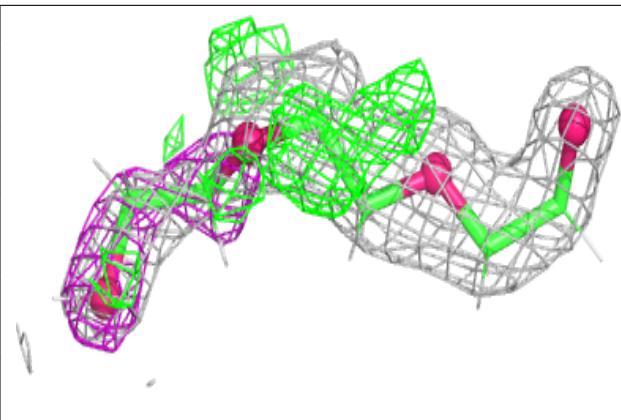
In the following table, the Atoms column lists the number of modelled atoms in the group and the number defined in the chemical component dictionary. The B-factors column lists the minimum, median, 95<sup>th</sup> percentile and maximum values of B factors of atoms in the group. The column labelled 'Q< 0.9' lists the number of atoms with occupancy less than 0.9.

Mol	Type	Chain	Res	Atoms	RSCC	RSR	B-factors(Å <sup>2</sup> )	Q<0.9
6	GOL	B	405	6/6	0.58	0.17	59,63,65,65	0
5	1PE	A	406	10/16	0.77	0.34	20,20,24,28	23
6	GOL	A	408	6/6	0.78	0.20	20,20,20,20	14
3	PEG	A	403	7/7	0.78	0.34	20,20,20,27	17
6	GOL	B	407	6/6	0.79	0.23	20,20,20,20	14
5	1PE	A	407	16/16	0.82	0.27	20,20,26,27	38
3	PEG	A	401	7/7	0.82	0.25	20,20,20,28	17
6	GOL	B	404	6/6	0.84	0.19	50,51,52,55	0
6	GOL	B	406	6/6	0.85	0.16	20,20,20,20	14
3	PEG	B	401	7/7	0.85	0.30	20,20,20,25	17
3	PEG	A	402	7/7	0.88	0.32	20,20,20,29	17
3	PEG	B	402	7/7	0.88	0.27	20,20,20,27	17
3	PEG	A	404	7/7	0.88	0.33	20,20,20,27	17
4	TCA	B	403	10/11	0.94	0.11	18,30,33,34	0
4	TCA	A	405	10/11	0.94	0.11	22,29,33,35	0
7	GLN	H	101	9/10	0.95	0.08	16,18,21,23	0
7	GLN	I	101	9/10	0.98	0.09	15,17,22,22	0

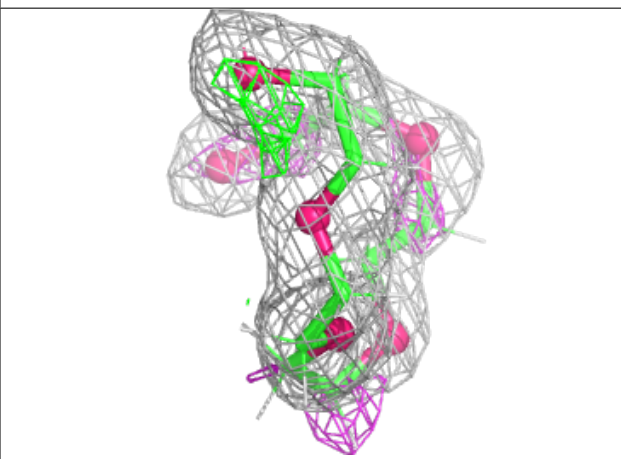
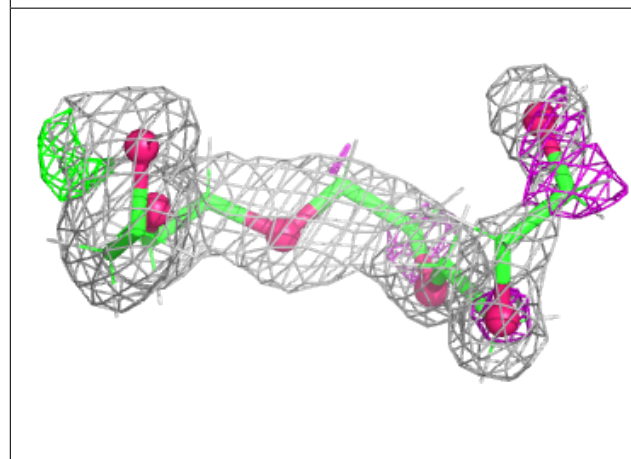
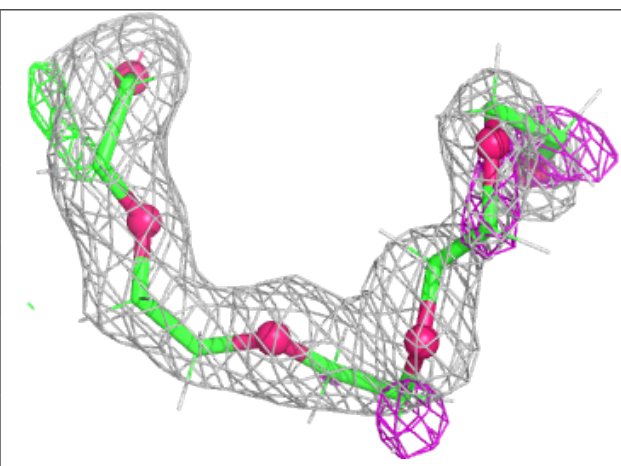
The following is a graphical depiction of the model fit to experimental electron density of all instances of the Ligand of Interest. In addition, ligands with molecular weight > 250 and outliers as shown on the geometry validation Tables will also be included. Each fit is shown from different orientation to approximate a three-dimensional view.

**Electron density around 1PE A 406:**

$2mF_o-DF_c$  (at 0.7 rmsd) in gray  
 $mF_o-DF_c$  (at 3 rmsd) in purple (negative)  
and green (positive)

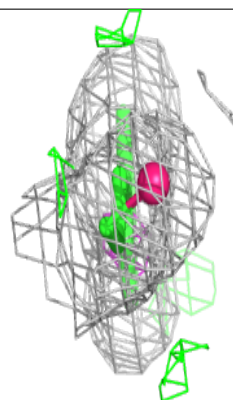
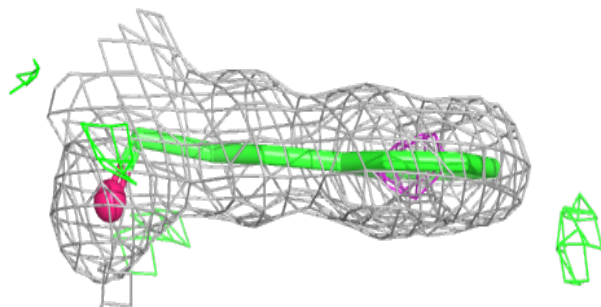
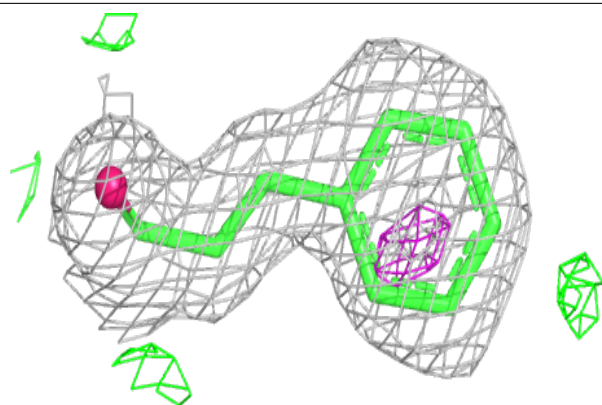
**Electron density around 1PE A 407:**

$2mF_o-DF_c$  (at 0.7 rmsd) in gray  
 $mF_o-DF_c$  (at 3 rmsd) in purple (negative)  
and green (positive)

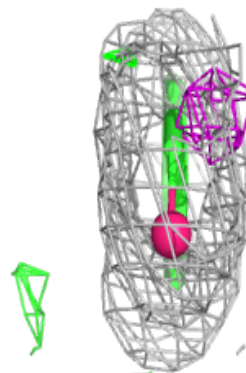
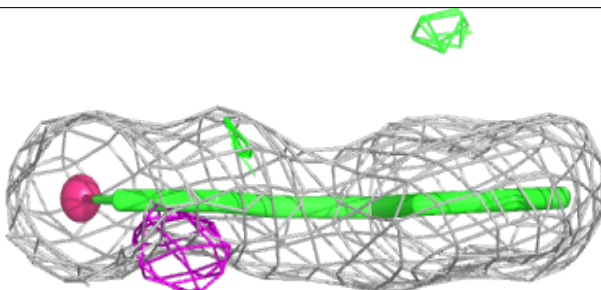
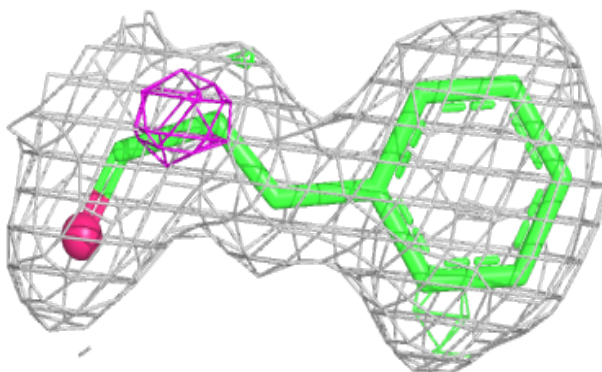


**Electron density around TCA B 403:**

$2mF_o-DF_c$  (at 0.7 rmsd) in gray  
 $mF_o-DF_c$  (at 3 rmsd) in purple (negative)  
and green (positive)

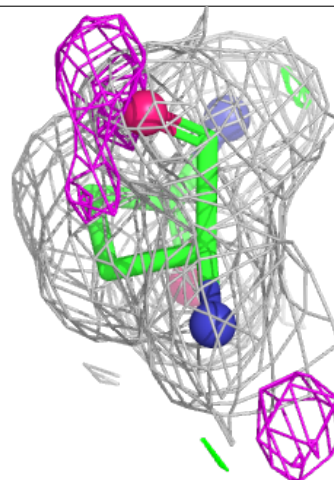
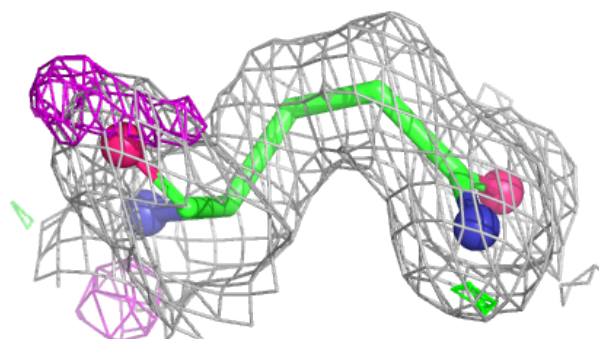
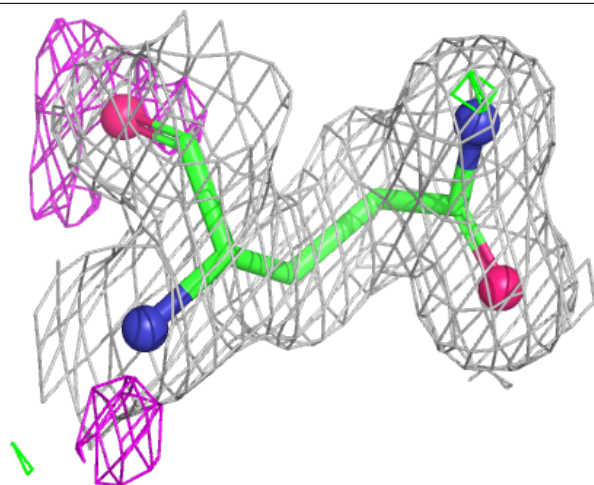
**Electron density around TCA A 405:**

$2mF_o-DF_c$  (at 0.7 rmsd) in gray  
 $mF_o-DF_c$  (at 3 rmsd) in purple (negative)  
and green (positive)



**Electron density around GLN H 101:**

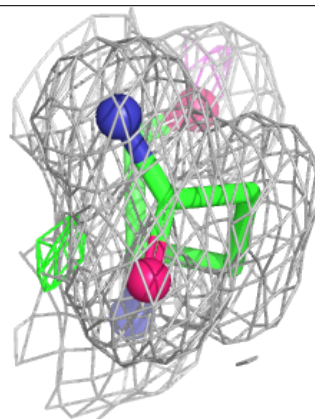
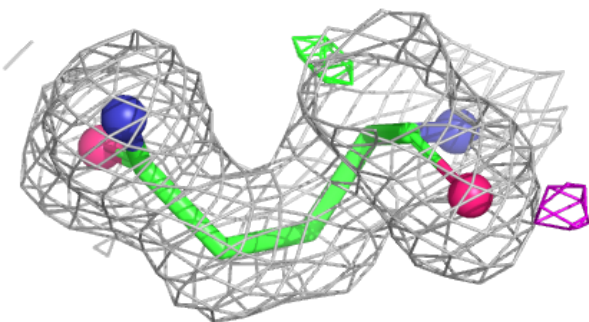
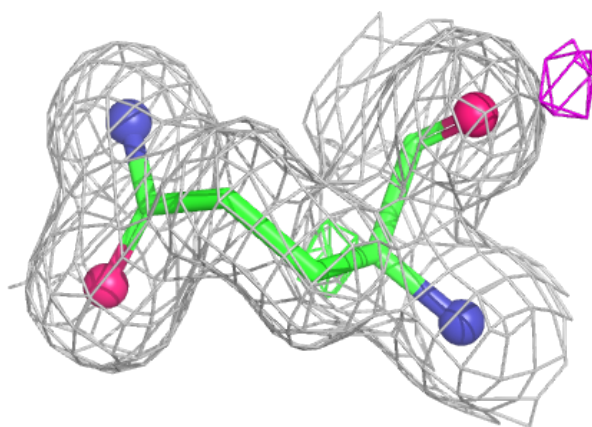
$2mF_o-DF_c$  (at 0.7 rmsd) in gray  
 $mF_o-DF_c$  (at 3 rmsd) in purple (negative)  
and green (positive)





**Electron density around GLN I 101:**

$2mF_o-DF_c$  (at 0.7 rmsd) in gray  
 $mF_o-DF_c$  (at 3 rmsd) in purple (negative)  
and green (positive)



## 6.5 Other polymers [i](#)

There are no such residues in this entry.