



# wwPDB X-ray Structure Validation Summary Report ⓘ

Aug 22, 2020 – 12:56 PM BST

PDB ID : 6B0Z  
Title : IDH1 R132H mutant in complex with IDH305  
Authors : Xie, X.; Kulathila, R.  
Deposited on : 2017-09-15  
Resolution : 2.33 Å(reported)

This is a wwPDB X-ray Structure Validation Summary Report for a publicly released PDB entry.

We welcome your comments at [validation@mail.wwpdb.org](mailto:validation@mail.wwpdb.org)

A user guide is available at

<https://www.wwpdb.org/validation/2017/XrayValidationReportHelp>

with specific help available everywhere you see the ⓘ symbol.

---

The following versions of software and data (see [references ⓘ](#)) were used in the production of this report:

MolProbity : 4.02b-467  
Mogul : 1.8.5 (274361), CSD as541be (2020)  
Xtriage (Phenix) : 1.13  
EDS : 2.13.1  
buster-report : 1.1.7 (2018)  
Percentile statistics : 20191225.v01 (using entries in the PDB archive December 25th 2019)  
Refmac : 5.8.0158  
CCP4 : 7.0.044 (Gargrove)  
Ideal geometry (proteins) : Engh & Huber (2001)  
Ideal geometry (DNA, RNA) : Parkinson et al. (1996)  
Validation Pipeline (wwPDB-VP) : 2.13.1

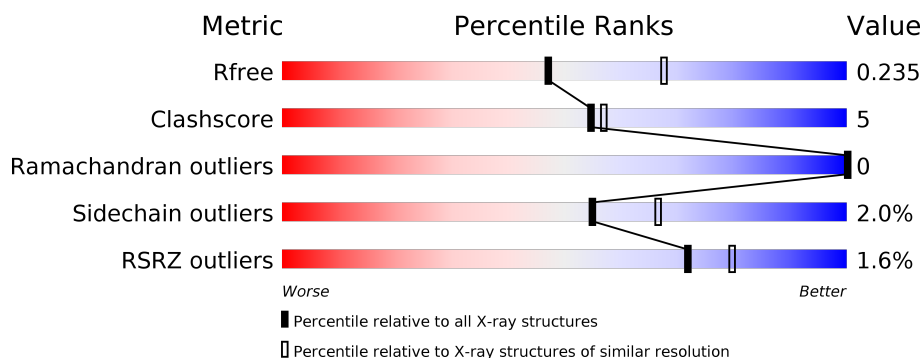
# 1 Overall quality at a glance

The following experimental techniques were used to determine the structure:

*X-RAY DIFFRACTION*

The reported resolution of this entry is 2.33 Å.

Percentile scores (ranging between 0-100) for global validation metrics of the entry are shown in the following graphic. The table shows the number of entries on which the scores are based.



Metric	Whole archive (#Entries)	Similar resolution (#Entries, resolution range(Å))
$R_{free}$	130704	2096 (2.36-2.32)
Clashscore	141614	2193 (2.36-2.32)
Ramachandran outliers	138981	2159 (2.36-2.32)
Sidechain outliers	138945	2160 (2.36-2.32)
RSRZ outliers	127900	2067 (2.36-2.32)

The table below summarises the geometric issues observed across the polymeric chains and their fit to the electron density. The red, orange, yellow and green segments on the lower bar indicate the fraction of residues that contain outliers for  $\geq 3$ , 2, 1 and 0 types of geometric quality criteria respectively. A grey segment represents the fraction of residues that are not modelled. The numeric value for each fraction is indicated below the corresponding segment, with a dot representing fractions  $\leq 5\%$ . The upper red bar (where present) indicates the fraction of residues that have poor fit to the electron density. The numeric value is given above the bar.

Mol	Chain	Length	Quality of chain
1	A	417	<div> <div>86%</div> <div>10%</div> <div>•</div> </div>
1	B	417	<div> <div>2%</div> <div>88%</div> <div>10%</div> <div>•</div> </div>
1	C	417	<div> <div>3%</div> <div>82%</div> <div>15%</div> <div>••</div> </div>
1	D	417	<div> <div>2%</div> <div>81%</div> <div>14%</div> <div>•</div> </div>

## 2 Entry composition

There are 5 unique types of molecules in this entry. The entry contains 13796 atoms, of which 0 are hydrogens and 0 are deuteriums.

In the tables below, the ZeroOcc column contains the number of atoms modelled with zero occupancy, the AltConf column contains the number of residues with at least one atom in alternate conformation and the Trace column contains the number of residues modelled with at most 2 atoms.

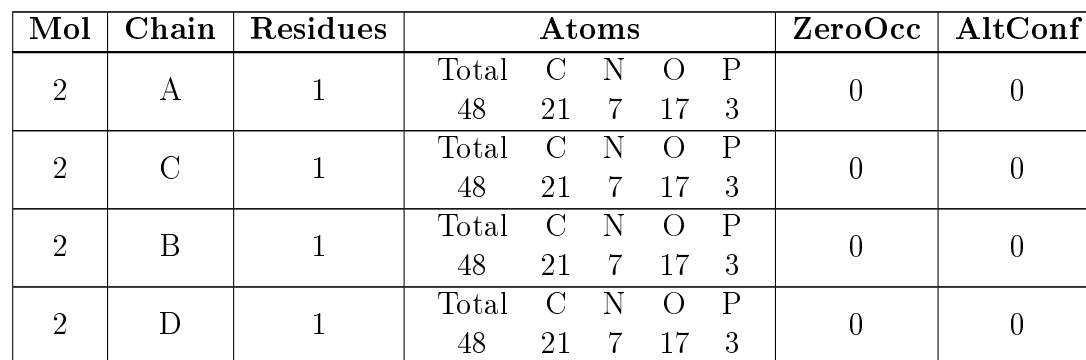
- Molecule 1 is a protein called Isocitrate dehydrogenase [NADP] cytoplasmic.

Mol	Chain	Residues	Atoms					ZeroOcc	AltConf	Trace
1	A	399	Total	C	N	O	S	0	2	0
			3162	2012	535	596	19			
1	C	410	Total	C	N	O	S	0	0	0
			3249	2066	551	614	18			
1	B	409	Total	C	N	O	S	0	1	0
			3247	2064	551	614	18			
1	D	399	Total	C	N	O	S	0	3	0
			3173	2018	541	594	20			

There are 16 discrepancies between the modelled and reference sequences:

Chain	Residue	Modelled	Actual	Comment	Reference
A	-2	GLY	-	expression tag	UNP O75874
A	-1	PRO	-	expression tag	UNP O75874
A	0	GLY	-	expression tag	UNP O75874
A	132	HIS	ARG	engineered mutation	UNP O75874
C	-2	GLY	-	expression tag	UNP O75874
C	-1	PRO	-	expression tag	UNP O75874
C	0	GLY	-	expression tag	UNP O75874
C	132	HIS	ARG	engineered mutation	UNP O75874
B	-2	GLY	-	expression tag	UNP O75874
B	-1	PRO	-	expression tag	UNP O75874
B	0	GLY	-	expression tag	UNP O75874
B	132	HIS	ARG	engineered mutation	UNP O75874
D	-2	GLY	-	expression tag	UNP O75874
D	-1	PRO	-	expression tag	UNP O75874
D	0	GLY	-	expression tag	UNP O75874
D	132	HIS	ARG	engineered mutation	UNP O75874

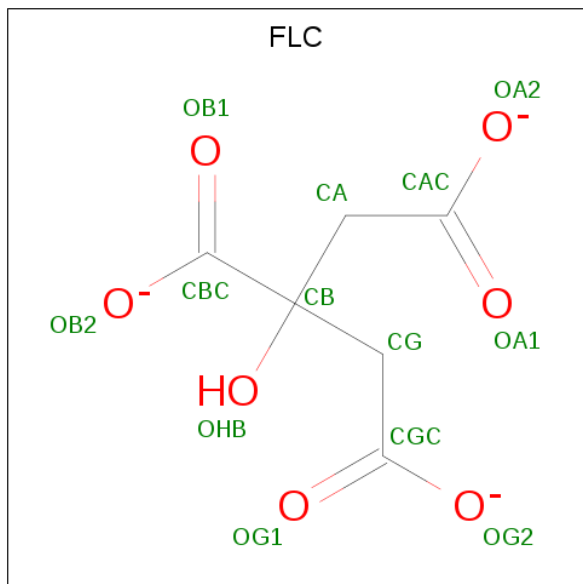
- Molecule 2 is NADPH DIHYDRO-NICOTINAMIDE-ADENINE-DINUCLEOTIDE PHOSPHATE (three-letter code: NDP) (formula:  $C_{21}H_{30}N_7O_{17}P_3$ ).



- 
- The ORTEP diagram illustrates the molecular structure of compound C81. The molecule consists of a central pyridine ring (C16-C21, N17) substituted with a 2,4,6-trifluorophenyl group (C22-C27, N25, F33, F34, F36) and a 2,4,6-trifluorophenyl group (C18-C23, N17, F33, F34, F36). The central pyridine ring is also substituted with a 2,4,6-trifluorophenyl group (C18-C23, N17, F33, F34, F36). The structure is shown with displacement ellipsoids at the 50% probability level, and the atoms are labeled with their respective coordinates and occupancies.

Mol	Chain	Residues	Atoms					ZeroOcc	AltConf
3	A	1	Total	C	F	N	O	0	0
			35	23	4	6	2		
3	A	1	Total	C	F	N	O	0	0
			35	23	4	6	2		
3	C	1	Total	C	F	N	O	0	0
			35	23	4	6	2		
3	B	1	Total	C	F	N	O	0	0
			35	23	4	6	2		
3	D	1	Total	C	F	N	O	0	0
			35	23	4	6	2		
3	D	1	Total	C	F	N	O	0	0
			35	23	4	6	2		

- Molecule 4 is CITRATE ANION (three-letter code: FLC) (formula:  $C_6H_5O_7^-$ ).



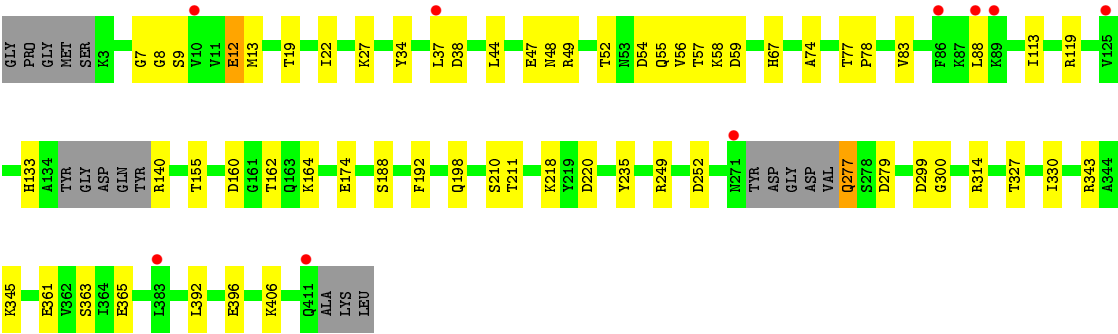
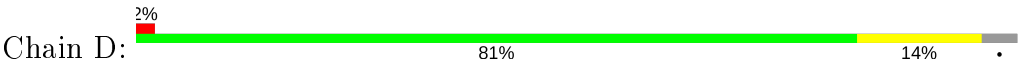
Mol	Chain	Residues	Atoms			ZeroOcc	AltConf
4	A	1	Total	C	O	0	0
			13	6	7		
4	C	1	Total	C	O	0	0
			13	6	7		
4	B	1	Total	C	O	0	0
			13	6	7		
4	D	1	Total	C	O	0	0
			13	6	7		

- Molecule 5 is water.

Mol	Chain	Residues	Atoms		ZeroOcc	AltConf
5	A	175	Total 175	O 175	0	0
5	C	75	Total 75	O 75	0	0
5	B	208	Total 208	O 208	0	0
5	D	53	Total 53	O 53	0	0

These plots are drawn for all protein, RNA, DNA and oligosaccharide chains in the entry. The first graphic for a chain summarises the proportions of the various outlier classes displayed in the second graphic. The second graphic shows the sequence view annotated by issues in geometry and electron density. Residues are color-coded according to the number of geometric quality criteria for which they contain at least one outlier: green = 0, yellow = 1, orange = 2 and red = 3 or more. A red dot above a residue indicates a poor fit to the electron density ( $RSRZ > 2$ ). Stretches of 2 or more consecutive residues without any outlier are shown as a green connector. Residues present in the sample, but not in the model, are shown in grey.

- Molecule 1: Isocitrate dehydrogenase [NADP] cytoplasmic





## 4 Data and refinement statistics

Property	Value	Source
Space group	P 21 21 21	Depositor
Cell constants a, b, c, $\alpha$ , $\beta$ , $\gamma$	81.50Å 155.31Å 163.05Å 90.00° 90.00° 90.00°	Depositor
Resolution (Å)	43.70 – 2.33 112.46 – 2.33	Depositor EDS
% Data completeness (in resolution range)	99.9 (43.70-2.33) 97.0 (112.46-2.33)	Depositor EDS
$R_{merge}$	(Not available)	Depositor
$R_{sym}$	(Not available)	Depositor
$\langle I/\sigma(I) \rangle$ <sup>1</sup>	2.85 (at 2.34Å)	Xtriage
Refinement program	PHENIX 1.12 _2829	Depositor
R, $R_{free}$	0.189 , 0.235 0.189 , 0.235	Depositor DCC
$R_{free}$ test set	4444 reflections (5.01%)	wwPDB-VP
Wilson B-factor (Å <sup>2</sup> )	41.0	Xtriage
Anisotropy	0.036	Xtriage
Bulk solvent $k_{sol}$ (e/Å <sup>3</sup> ), $B_{sol}$ (Å <sup>2</sup> )	0.33 , 39.0	EDS
L-test for twinning <sup>2</sup>	$\langle  L  \rangle = 0.47$ , $\langle L^2 \rangle = 0.30$	Xtriage
Estimated twinning fraction	0.018 for -h,l,k	Xtriage
$F_o, F_c$ correlation	0.95	EDS
Total number of atoms	13796	wwPDB-VP
Average B, all atoms (Å <sup>2</sup> )	48.0	wwPDB-VP

Xtriage's analysis on translational NCS is as follows: *The largest off-origin peak in the Patterson function is 3.43% of the height of the origin peak. No significant pseudotranslation is detected.*

<sup>1</sup>Intensities estimated from amplitudes.

<sup>2</sup>Theoretical values of  $\langle |L| \rangle$ ,  $\langle L^2 \rangle$  for acentric reflections are 0.5, 0.333 respectively for untwinned datasets, and 0.375, 0.2 for perfectly twinned datasets.

## 5 Model quality [i](#)

### 5.1 Standard geometry [i](#)

Bond lengths and bond angles in the following residue types are not validated in this section: NDP, FLC, C81

The Z score for a bond length (or angle) is the number of standard deviations the observed value is removed from the expected value. A bond length (or angle) with  $|Z| > 5$  is considered an outlier worth inspection. RMSZ is the root-mean-square of all Z scores of the bond lengths (or angles).

Mol	Chain	Bond lengths		Bond angles	
		RMSZ	# Z  >5	RMSZ	# Z  >5
1	A	0.26	0/3232	0.44	0/4355
1	B	0.26	0/3317	0.44	0/4471
1	C	0.26	0/3316	0.45	0/4470
1	D	0.27	0/3246	0.47	1/4372 (0.0%)
All	All	0.26	0/13111	0.45	1/17668 (0.0%)

There are no bond length outliers.

All (1) bond angle outliers are listed below:

Mol	Chain	Res	Type	Atoms	Z	Observed(°)	Ideal(°)
1	D	314	ARG	NE-CZ-NH1	7.37	123.98	120.30

There are no chirality outliers.

There are no planarity outliers.

### 5.2 Too-close contacts [i](#)

In the following table, the Non-H and H(model) columns list the number of non-hydrogen atoms and hydrogen atoms in the chain respectively. The H(added) column lists the number of hydrogen atoms added and optimized by MolProbity. The Clashes column lists the number of clashes within the asymmetric unit, whereas Symm-Clashes lists symmetry related clashes.

Mol	Chain	Non-H	H(model)	H(added)	Clashes	Symm-Clashes
1	A	3162	0	3143	25	0
1	B	3247	0	3217	23	0
1	C	3249	0	3220	42	0
1	D	3173	0	3163	46	0
2	A	48	0	26	3	0
2	B	48	0	26	4	0

*Continued on next page...*

*Continued from previous page...*

Mol	Chain	Non-H	H(model)	H(added)	Clashes	Symm-Clashes
2	C	48	0	26	1	0
2	D	48	0	26	0	0
3	A	70	0	0	0	0
3	B	35	0	0	0	0
3	C	35	0	0	0	0
3	D	70	0	0	1	0
4	A	13	0	5	2	0
4	B	13	0	5	3	0
4	C	13	0	5	2	0
4	D	13	0	5	0	0
5	A	175	0	0	3	0
5	B	208	0	0	1	0
5	C	75	0	0	2	0
5	D	53	0	0	1	0
All	All	13796	0	12867	136	0

The all-atom clashscore is defined as the number of clashes found per 1000 atoms (including hydrogen atoms). The all-atom clashscore for this structure is 5.

The worst 5 of 136 close contacts within the same asymmetric unit are listed below, sorted by their clash magnitude.

Atom-1	Atom-2	Interatomic distance (Å)	Clash overlap (Å)
1:C:212:LYS:NZ	1:C:271:ASN:OD1	1.97	0.98
1:D:55:GLN:HE22	1:D:58:LYS:HE2	1.32	0.91
1:D:7:GLY:HA3	1:D:37:LEU:HD23	1.58	0.86
1:D:52:THR:HG21	1:D:56:VAL:HG12	1.67	0.76
1:D:55:GLN:NE2	1:D:59:ASP:OD1	2.19	0.74

There are no symmetry-related clashes.

## 5.3 Torsion angles [i](#)

### 5.3.1 Protein backbone [i](#)

In the following table, the Percentiles column shows the percent Ramachandran outliers of the chain as a percentile score with respect to all X-ray entries followed by that with respect to entries of similar resolution.

The Analysed column shows the number of residues for which the backbone conformation was analysed, and the total number of residues.

Mol	Chain	Analysed	Favoured	Allowed	Outliers	Percentiles	
1	A	395/417 (95%)	384 (97%)	11 (3%)	0	100	100
1	B	406/417 (97%)	394 (97%)	12 (3%)	0	100	100
1	C	406/417 (97%)	393 (97%)	13 (3%)	0	100	100
1	D	396/417 (95%)	385 (97%)	11 (3%)	0	100	100
All	All	1603/1668 (96%)	1556 (97%)	47 (3%)	0	100	100

There are no Ramachandran outliers to report.

### 5.3.2 Protein sidechains ⓘ

In the following table, the Percentiles column shows the percent sidechain outliers of the chain as a percentile score with respect to all X-ray entries followed by that with respect to entries of similar resolution.

The Analysed column shows the number of residues for which the sidechain conformation was analysed, and the total number of residues.

Mol	Chain	Analysed	Rotameric	Outliers	Percentiles	
1	A	339/351 (97%)	332 (98%)	7 (2%)	53	65
1	B	347/351 (99%)	339 (98%)	8 (2%)	50	61
1	C	347/351 (99%)	339 (98%)	8 (2%)	50	61
1	D	341/351 (97%)	337 (99%)	4 (1%)	71	82
All	All	1374/1404 (98%)	1347 (98%)	27 (2%)	55	66

5 of 27 residues with a non-rotameric sidechain are listed below:

Mol	Chain	Res	Type
1	C	278	SER
1	B	3	LYS
1	D	140	ARG
1	C	338	ARG
1	A	222	ARG

Some sidechains can be flipped to improve hydrogen bonding and reduce clashes. All (4) such sidechains are listed below:

Mol	Chain	Res	Type
1	D	90	GLN
1	D	171	ASN
1	D	198	GLN

*Continued on next page...*

*Continued from previous page...*

Mol	Chain	Res	Type
1	D	277	GLN

### 5.3.3 RNA [i](#)

There are no RNA molecules in this entry.

## 5.4 Non-standard residues in protein, DNA, RNA chains [i](#)

There are no non-standard protein/DNA/RNA residues in this entry.

## 5.5 Carbohydrates [i](#)

There are no monosaccharides in this entry.

## 5.6 Ligand geometry [i](#)

14 ligands are modelled in this entry.

In the following table, the Counts columns list the number of bonds (or angles) for which Mogul statistics could be retrieved, the number of bonds (or angles) that are observed in the model and the number of bonds (or angles) that are defined in the Chemical Component Dictionary. The Link column lists molecule types, if any, to which the group is linked. The Z score for a bond length (or angle) is the number of standard deviations the observed value is removed from the expected value. A bond length (or angle) with  $|Z| > 2$  is considered an outlier worth inspection. RMSZ is the root-mean-square of all Z scores of the bond lengths (or angles).

Mol	Type	Chain	Res	Link	Bond lengths			Bond angles		
					Counts	RMSZ	# $ Z  > 2$	Counts	RMSZ	# $ Z  > 2$
4	FLC	C	503	-	3,12,12	1.18	0	3,17,17	2.52	2 (66%)
3	C81	D	504	-	35,38,38	0.98	2 (5%)	44,56,56	2.62	20 (45%)
3	C81	B	502	-	35,38,38	0.86	0	44,56,56	2.43	18 (40%)
2	NDP	B	501	-	45,52,52	1.32	3 (6%)	53,80,80	1.19	3 (5%)
3	C81	D	502	-	35,38,38	0.87	1 (2%)	44,56,56	2.56	19 (43%)
2	NDP	D	501	-	45,52,52	1.35	4 (8%)	53,80,80	1.59	8 (15%)
3	C81	A	504	-	35,38,38	0.95	1 (2%)	44,56,56	2.58	18 (40%)
4	FLC	D	503	-	3,12,12	1.12	0	3,17,17	1.87	1 (33%)
2	NDP	A	501	-	45,52,52	1.31	4 (8%)	53,80,80	1.22	3 (5%)
2	NDP	C	501	-	45,52,52	1.31	3 (6%)	53,80,80	1.23	4 (7%)

Mol	Type	Chain	Res	Link	Bond lengths			Bond angles		
					Counts	RMSZ	# Z  > 2	Counts	RMSZ	# Z  > 2
3	C81	C	502	-	35,38,38	0.86	0	44,56,56	2.38	16 (36%)
3	C81	A	502	-	35,38,38	0.84	0	44,56,56	2.46	18 (40%)
4	FLC	B	503	-	3,12,12	1.21	0	3,17,17	2.22	2 (66%)
4	FLC	A	503	-	3,12,12	1.11	0	3,17,17	1.12	0

In the following table, the Chirals column lists the number of chiral outliers, the number of chiral centers analysed, the number of these observed in the model and the number defined in the Chemical Component Dictionary. Similar counts are reported in the Torsion and Rings columns. '-' means no outliers of that kind were identified.

Mol	Type	Chain	Res	Link	Chirals	Torsions	Rings
4	FLC	C	503	-	-	0/6/16/16	-
3	C81	D	504	-	-	4/26/39/39	0/4/4/4
3	C81	B	502	-	-	0/26/39/39	0/4/4/4
2	NDP	B	501	-	-	8/30/77/77	0/5/5/5
3	C81	D	502	-	-	0/26/39/39	0/4/4/4
2	NDP	D	501	-	-	8/30/77/77	0/5/5/5
3	C81	A	504	-	-	1/26/39/39	0/4/4/4
4	FLC	D	503	-	-	0/6/16/16	-
2	NDP	A	501	-	-	9/30/77/77	0/5/5/5
2	NDP	C	501	-	-	8/30/77/77	0/5/5/5
3	C81	C	502	-	-	0/26/39/39	0/4/4/4
3	C81	A	502	-	-	0/26/39/39	0/4/4/4
4	FLC	B	503	-	-	0/6/16/16	-
4	FLC	A	503	-	-	0/6/16/16	-

The worst 5 of 18 bond length outliers are listed below:

Mol	Chain	Res	Type	Atoms	Z	Observed(Å)	Ideal(Å)
2	D	501	NDP	C4N-C3N	-5.39	1.39	1.49
2	B	501	NDP	C4N-C3N	-5.37	1.39	1.49
2	C	501	NDP	C4N-C3N	-5.37	1.39	1.49
2	A	501	NDP	C4N-C3N	-5.25	1.39	1.49
2	A	501	NDP	C6N-C5N	3.78	1.40	1.33

The worst 5 of 132 bond angle outliers are listed below:

Mol	Chain	Res	Type	Atoms	Z	Observed(°)	Ideal(°)
3	D	504	C81	N1-C2-N3	-7.17	119.76	126.55
3	A	504	C81	N1-C2-N3	-6.93	119.99	126.55

*Continued on next page...*

*Continued from previous page...*

Mol	Chain	Res	Type	Atoms	Z	Observed(°)	Ideal(°)
3	B	502	C81	N1-C2-N3	-6.80	120.10	126.55
3	D	502	C81	N1-C2-N3	-6.71	120.19	126.55
3	C	502	C81	N1-C2-N3	-6.70	120.20	126.55

There are no chirality outliers.

5 of 38 torsion outliers are listed below:

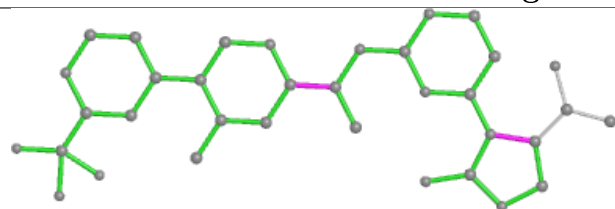
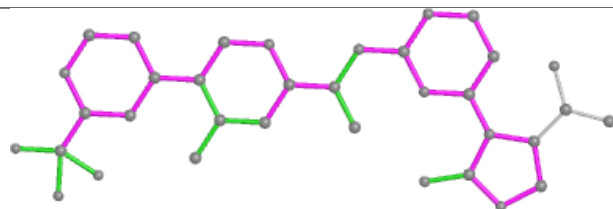
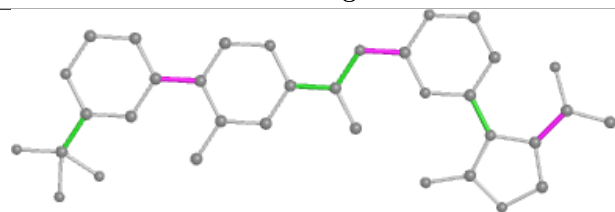
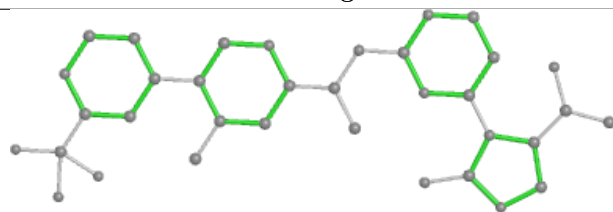
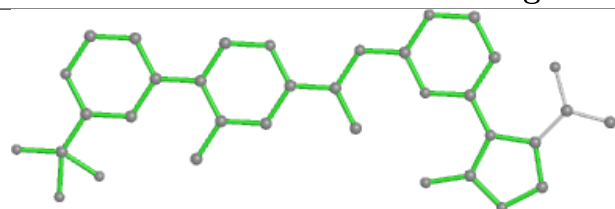
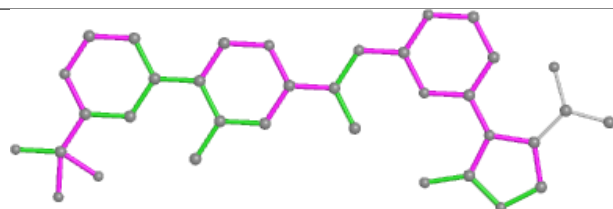
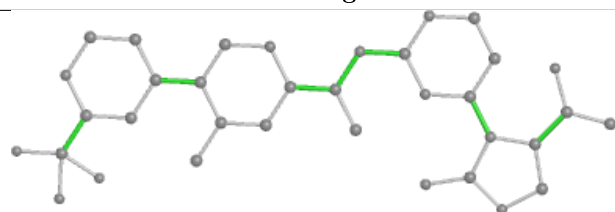
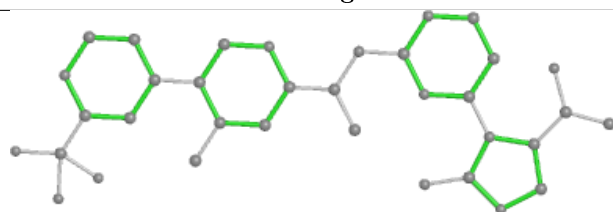
Mol	Chain	Res	Type	Atoms
2	B	501	NDP	C5D-O5D-PN-O1N
2	B	501	NDP	C5D-O5D-PN-O2N
2	D	501	NDP	C2B-O2B-P2B-O2X
2	D	501	NDP	C5D-O5D-PN-O1N
2	D	501	NDP	C5D-O5D-PN-O2N

There are no ring outliers.

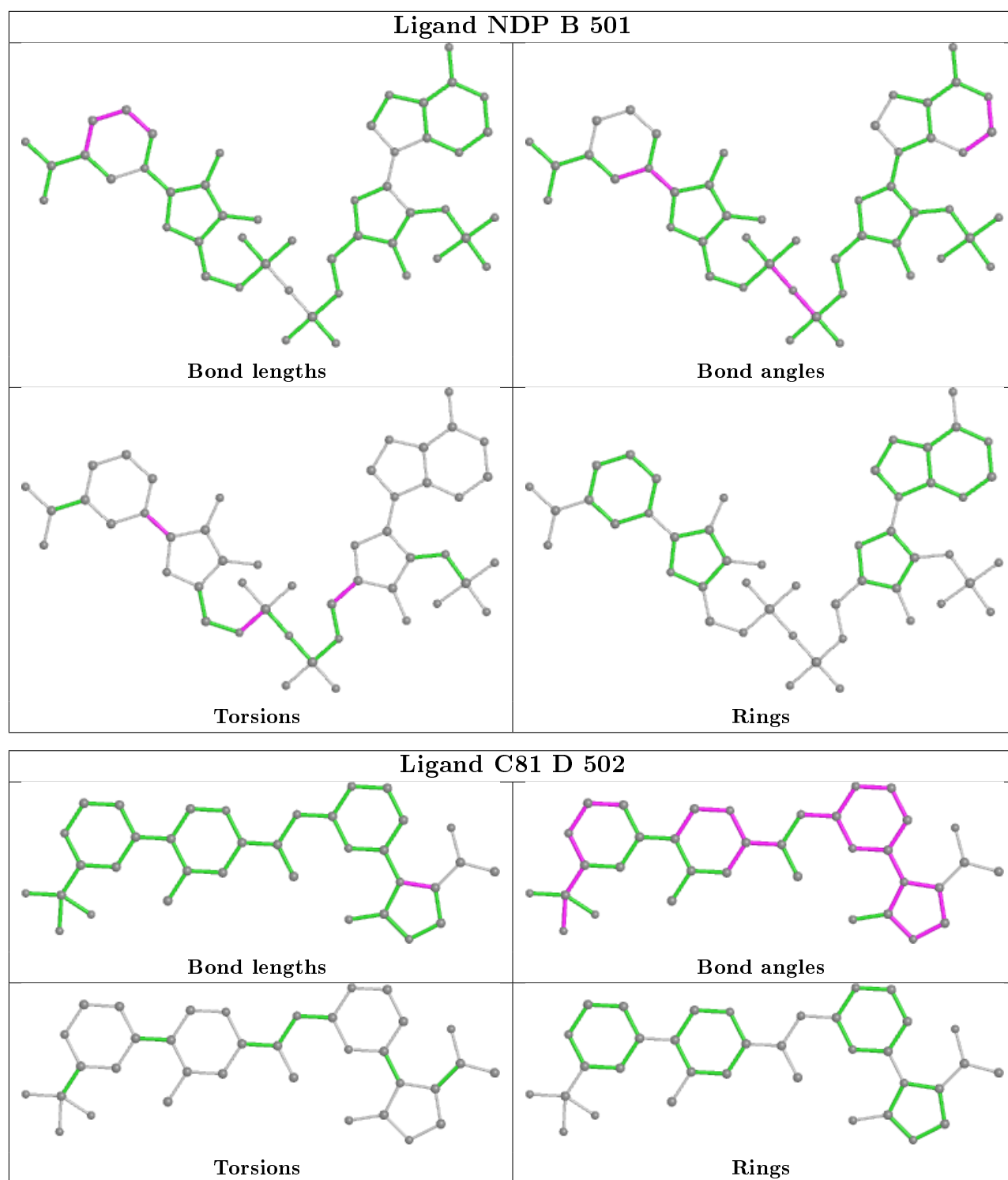
7 monomers are involved in 13 short contacts:

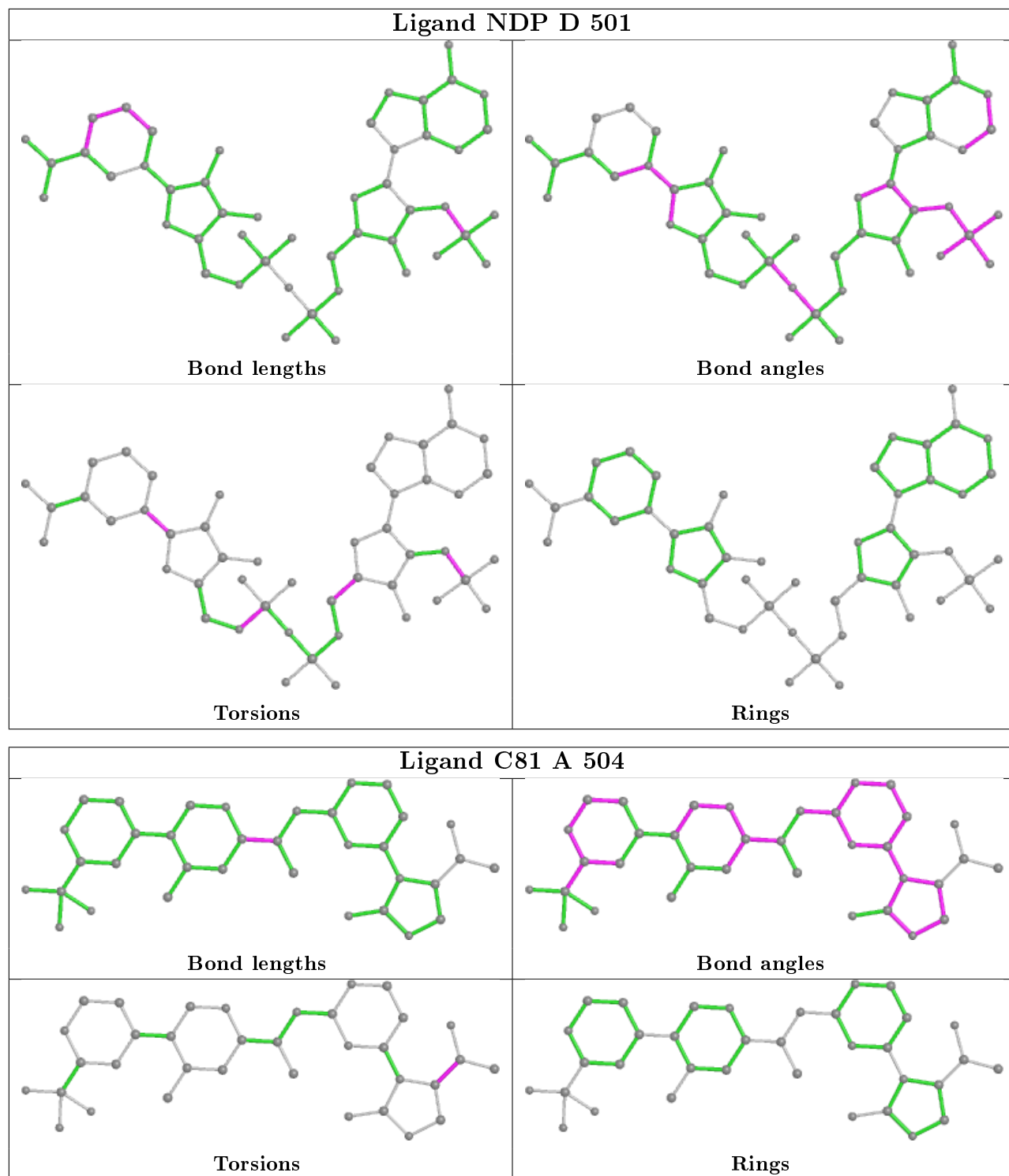
Mol	Chain	Res	Type	Clashes	Symm-Clashes
4	C	503	FLC	2	0
3	D	504	C81	1	0
2	B	501	NDP	4	0
2	A	501	NDP	3	0
2	C	501	NDP	1	0
4	B	503	FLC	3	0
4	A	503	FLC	2	0

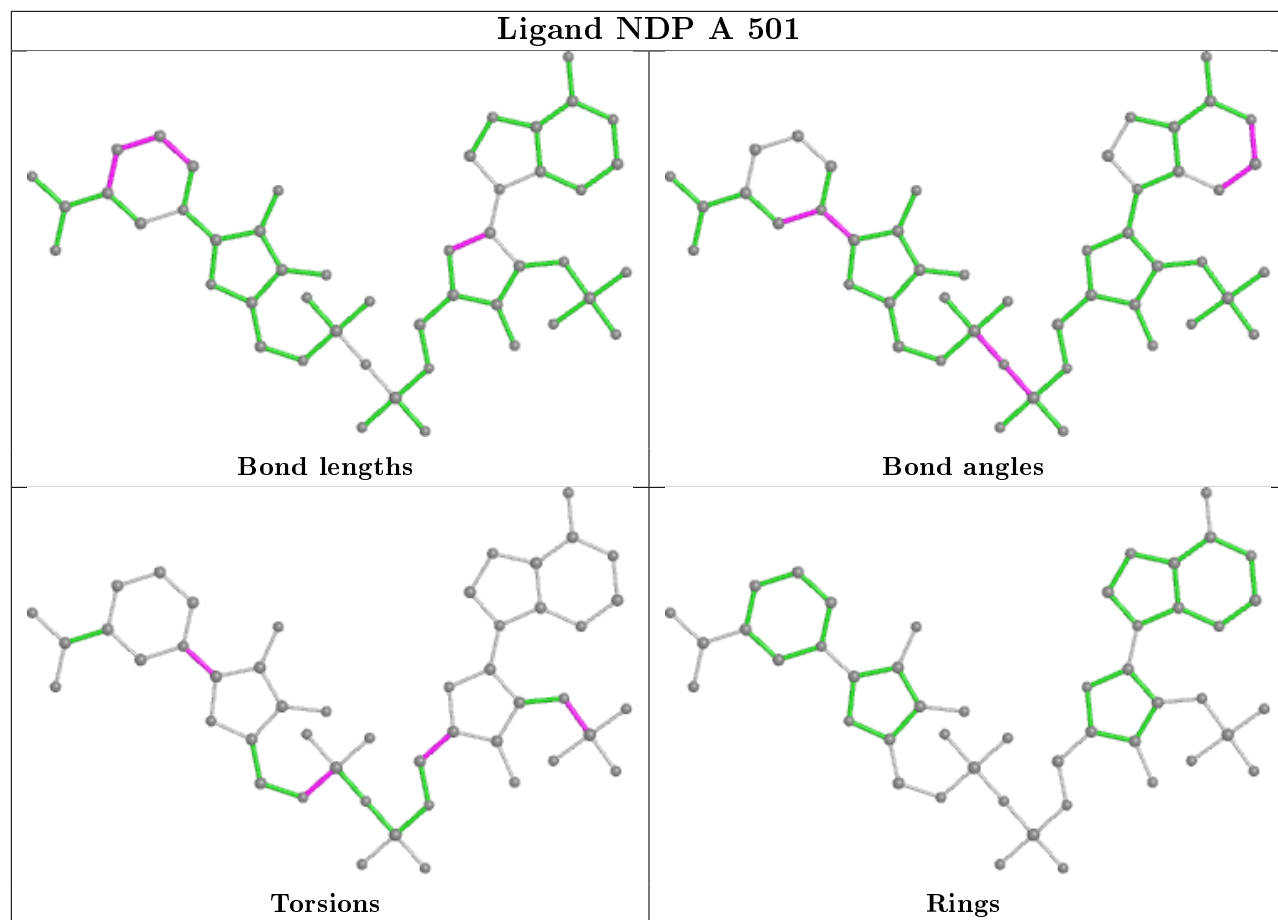
The following is a two-dimensional graphical depiction of Mogul quality analysis of bond lengths, bond angles, torsion angles, and ring geometry for all instances of the Ligand of Interest. In addition, ligands with molecular weight > 250 and outliers as shown on the validation Tables will also be included. For torsion angles, if less than 5% of the Mogul distribution of torsion angles is within 10 degrees of the torsion angle in question, then that torsion angle is considered an outlier. Any bond that is central to one or more torsion angles identified as an outlier by Mogul will be highlighted in the graph. For rings, the root-mean-square deviation (RMSD) between the ring in question and similar rings identified by Mogul is calculated over all ring torsion angles. If the average RMSD is greater than 60 degrees and the minimal RMSD between the ring in question and any Mogul-identified rings is also greater than 60 degrees, then that ring is considered an outlier. The outliers are highlighted in purple. The color gray indicates Mogul did not find sufficient equivalents in the CSD to analyse the geometry.

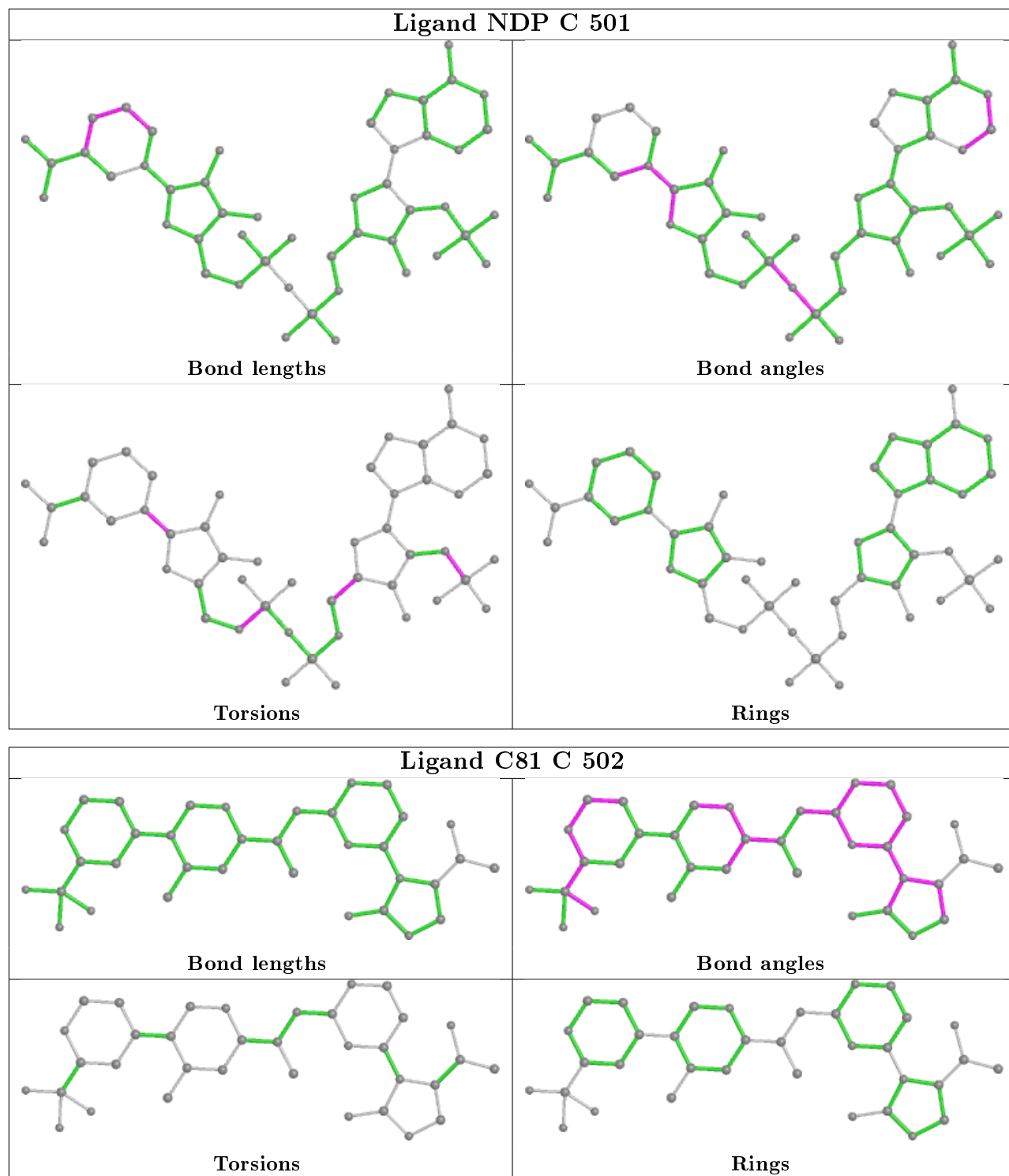
**Ligand C81 D 504****Bond lengths****Bond angles****Torsions****Rings****Ligand C81 B 502****Bond lengths****Bond angles****Torsions****Rings**

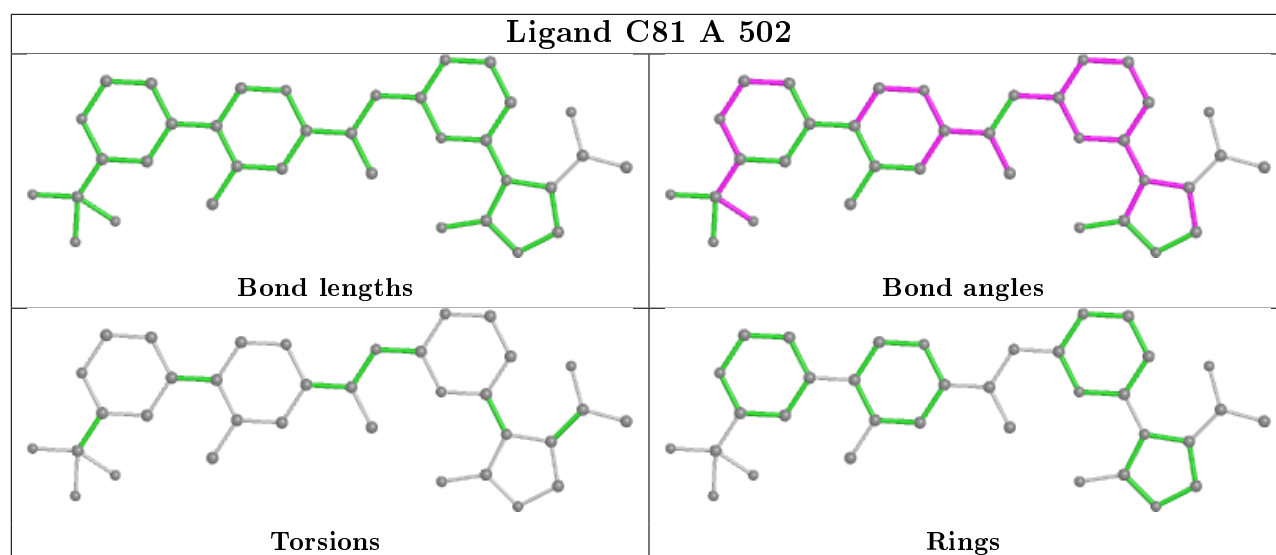












## 5.7 Other polymers [i](#)

There are no such residues in this entry.

## 5.8 Polymer linkage issues [i](#)

There are no chain breaks in this entry.

## 6 Fit of model and data [i](#)

### 6.1 Protein, DNA and RNA chains [i](#)

In the following table, the column labelled ‘#RSRZ> 2’ contains the number (and percentage) of RSRZ outliers, followed by percent RSRZ outliers for the chain as percentile scores relative to all X-ray entries and entries of similar resolution. The OWAB column contains the minimum, median, 95<sup>th</sup> percentile and maximum values of the occupancy-weighted average B-factor per residue. The column labelled ‘Q< 0.9’ lists the number of (and percentage) of residues with an average occupancy less than 0.9.

Mol	Chain	Analysed	<RSRZ>	#RSRZ>2	OWAB(Å <sup>2</sup> )	Q<0.9
1	A	399/417 (95%)	-0.11	1 (0%) 94 97	28, 39, 61, 73	0
1	B	409/417 (98%)	-0.13	3 (0%) 87 92	26, 38, 55, 83	0
1	C	410/417 (98%)	0.13	13 (3%) 47 58	31, 51, 82, 98	0
1	D	399/417 (95%)	0.16	9 (2%) 60 69	32, 56, 81, 94	0
All	All	1617/1668 (96%)	0.01	26 (1%) 72 80	26, 45, 75, 98	0

The worst 5 of 26 RSRZ outliers are listed below:

Mol	Chain	Res	Type	RSRZ
1	C	86	PHE	5.1
1	C	139	TYR	4.9
1	B	139	TYR	3.7
1	D	10	VAL	3.6
1	D	86	PHE	3.2

### 6.2 Non-standard residues in protein, DNA, RNA chains [i](#)

There are no non-standard protein/DNA/RNA residues in this entry.

### 6.3 Carbohydrates [i](#)

There are no monosaccharides in this entry.

### 6.4 Ligands [i](#)

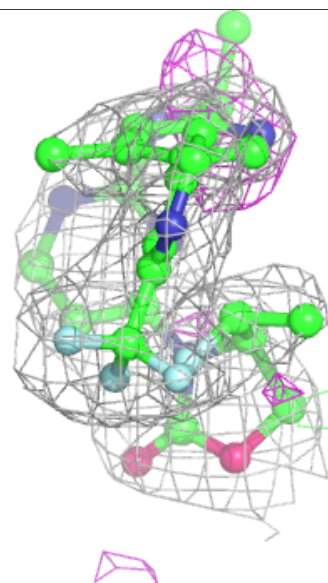
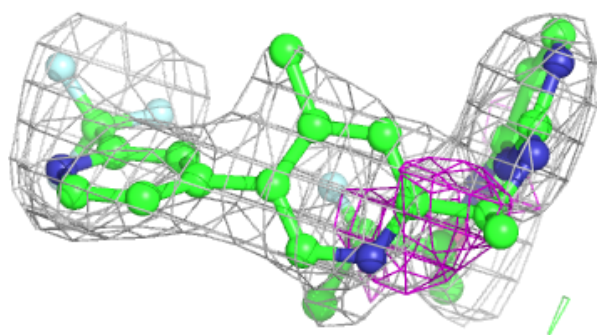
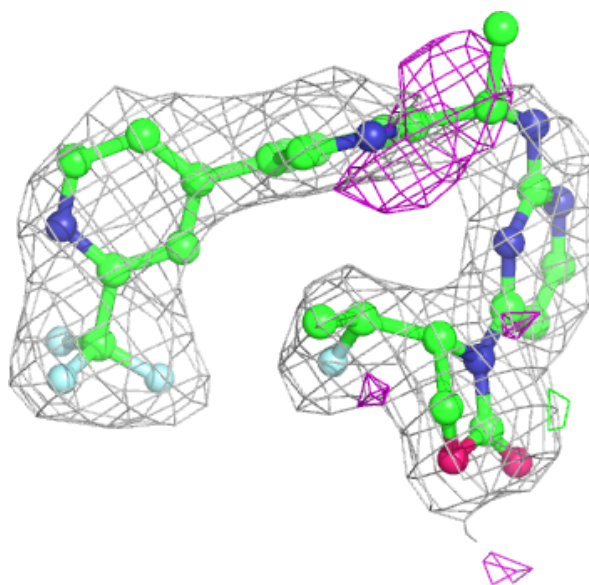
In the following table, the Atoms column lists the number of modelled atoms in the group and the number defined in the chemical component dictionary. The B-factors column lists the minimum, median, 95<sup>th</sup> percentile and maximum values of B factors of atoms in the group. The column labelled ‘Q< 0.9’ lists the number of atoms with occupancy less than 0.9.

Mol	Type	Chain	Res	Atoms	RSCC	RSR	B-factors( $\text{\AA}^2$ )	Q<0.9
4	FLC	D	503	13/13	0.72	0.25	73,77,87,89	0
4	FLC	C	503	13/13	0.82	0.29	86,92,96,97	0
4	FLC	A	503	13/13	0.85	0.24	56,59,68,69	0
4	FLC	B	503	13/13	0.89	0.21	51,60,68,69	0
3	C81	A	504	35/35	0.92	0.24	53,59,65,66	0
3	C81	D	502	35/35	0.93	0.19	41,51,70,72	0
2	NDP	C	501	48/48	0.94	0.13	49,60,71,73	0
3	C81	D	504	35/35	0.94	0.26	50,63,69,70	0
2	NDP	D	501	48/48	0.94	0.13	42,59,69,81	0
3	C81	C	502	35/35	0.96	0.14	38,44,54,60	0
3	C81	A	502	35/35	0.96	0.15	30,39,54,56	0
2	NDP	A	501	48/48	0.98	0.12	28,39,47,49	0
3	C81	B	502	35/35	0.98	0.14	30,37,53,60	0
2	NDP	B	501	48/48	0.98	0.12	24,34,41,59	0

The following is a graphical depiction of the model fit to experimental electron density of all instances of the Ligand of Interest. In addition, ligands with molecular weight > 250 and outliers as shown on the geometry validation Tables will also be included. Each fit is shown from different orientation to approximate a three-dimensional view.

**Electron density around C81 A 504:**

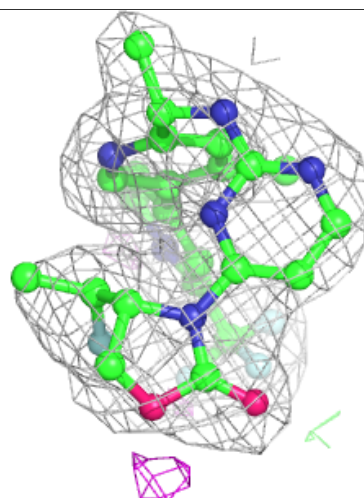
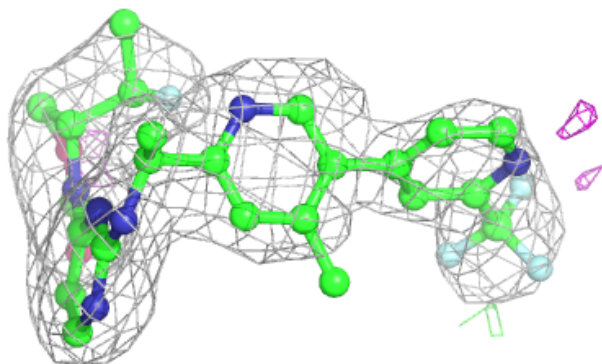
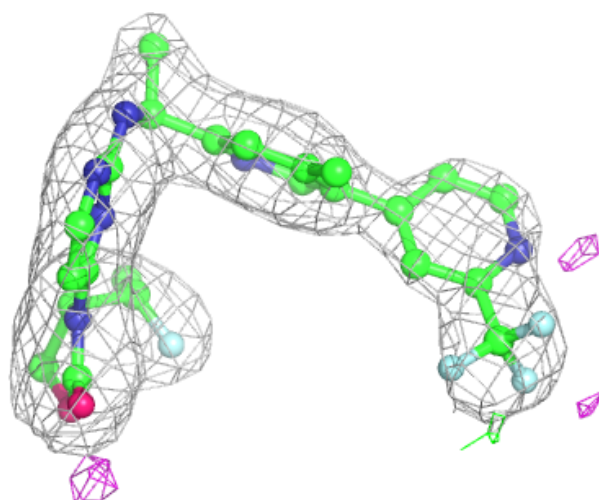
$2mF_o-DF_c$  (at 0.7 rmsd) in gray  
 $mF_o-DF_c$  (at 3 rmsd) in purple (negative)  
and green (positive)





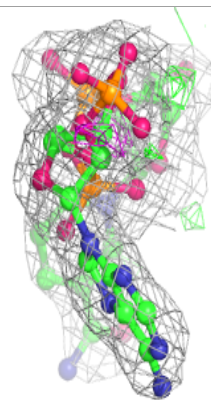
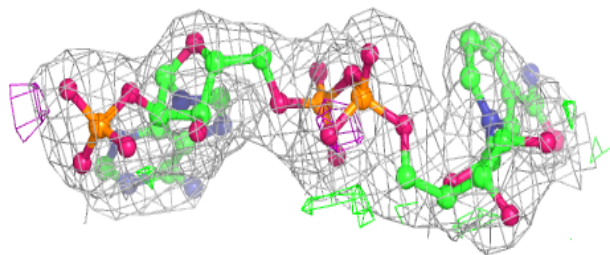
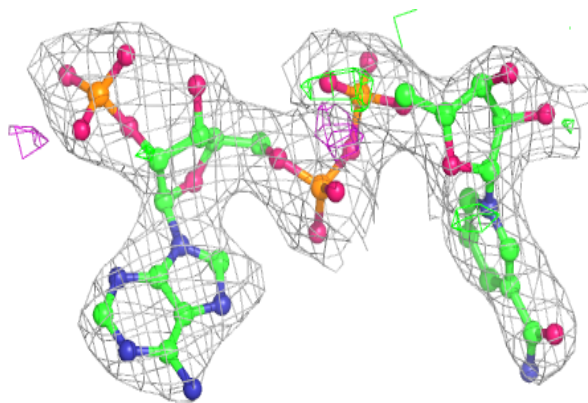
**Electron density around C81 D 502:**

$2mF_o-DF_c$  (at 0.7 rmsd) in gray  
 $mF_o-DF_c$  (at 3 rmsd) in purple (negative)  
and green (positive)



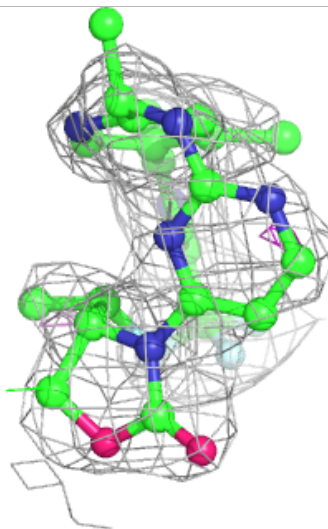
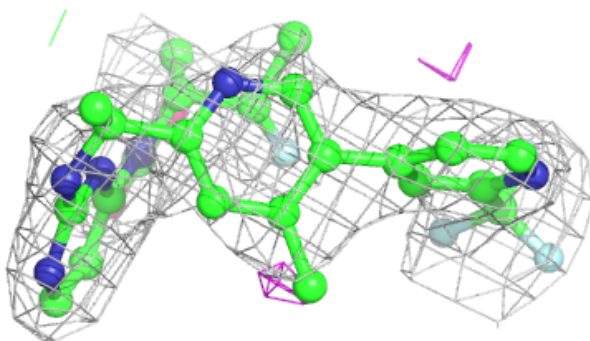
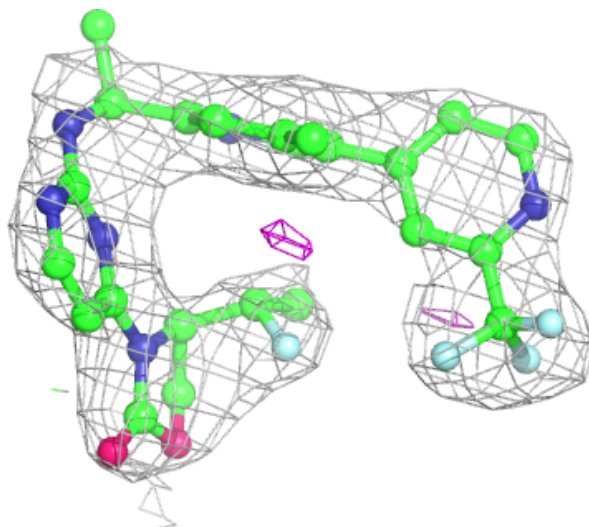
**Electron density around NDP C 501:**

$2mF_o-DF_c$  (at 0.7 rmsd) in gray  
 $mF_o-DF_c$  (at 3 rmsd) in purple (negative)  
and green (positive)



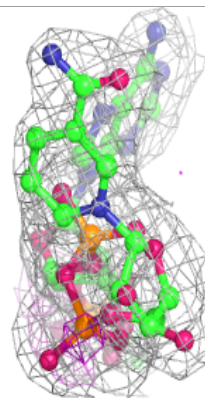
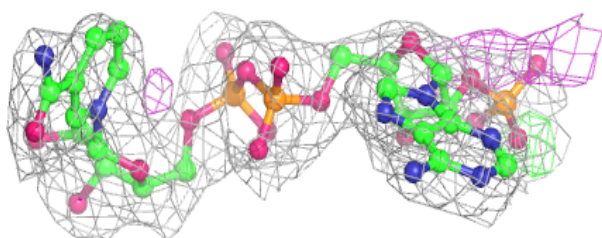
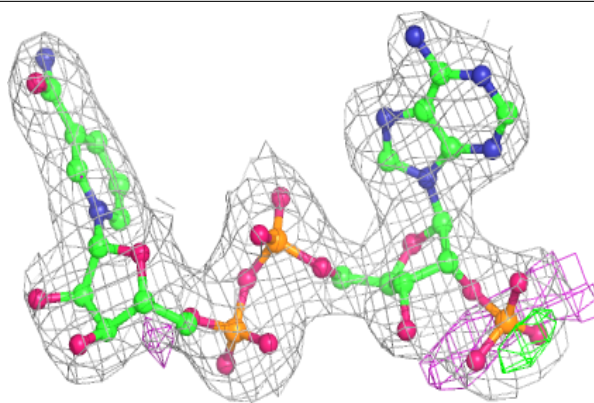
**Electron density around C81 D 504:**

$2mF_o-DF_c$  (at 0.7 rmsd) in gray  
 $mF_o-DF_c$  (at 3 rmsd) in purple (negative)  
and green (positive)

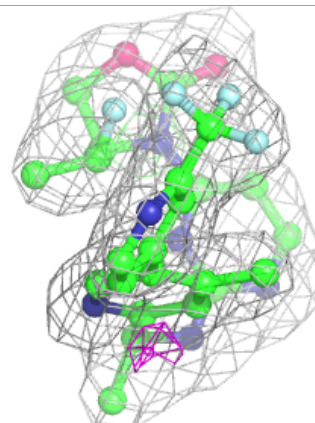
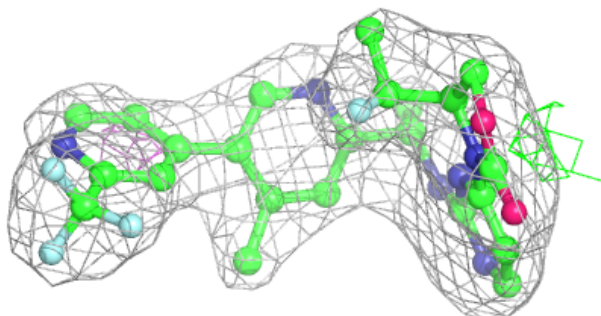
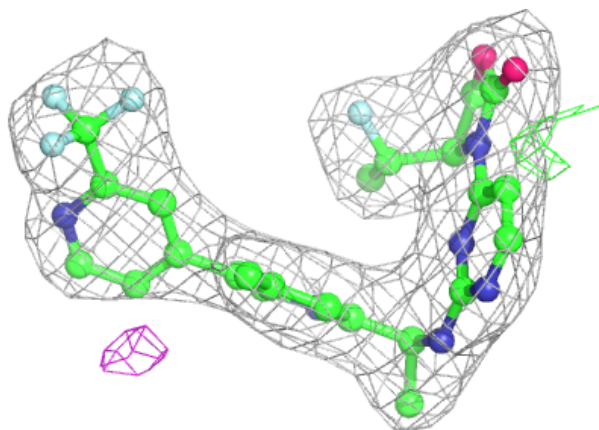


**Electron density around NDP D 501:**

$2mF_o-DF_c$  (at 0.7 rmsd) in gray  
 $mF_o-DF_c$  (at 3 rmsd) in purple (negative)  
and green (positive)

**Electron density around C81 C 502:**

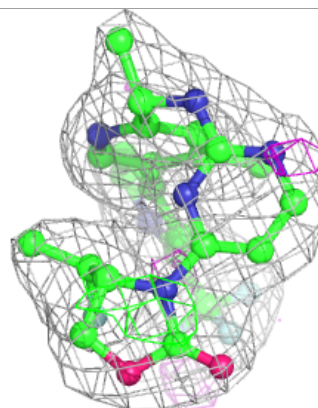
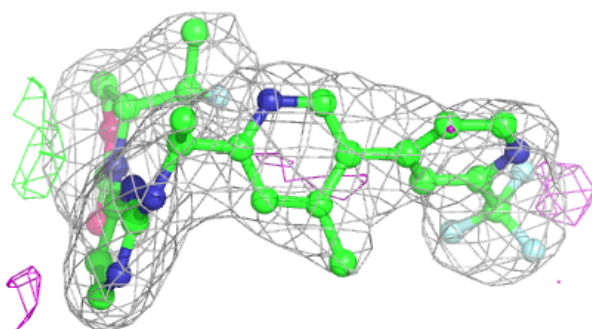
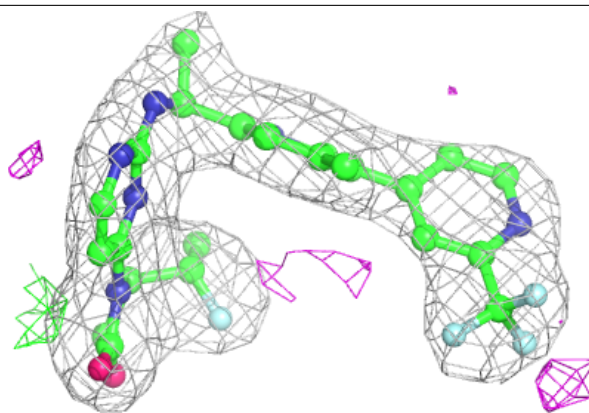
$2mF_o-DF_c$  (at 0.7 rmsd) in gray  
 $mF_o-DF_c$  (at 3 rmsd) in purple (negative)  
and green (positive)



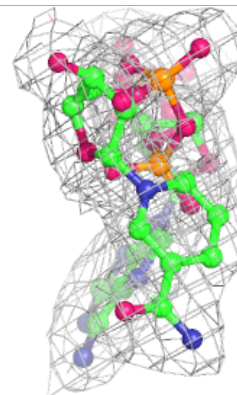
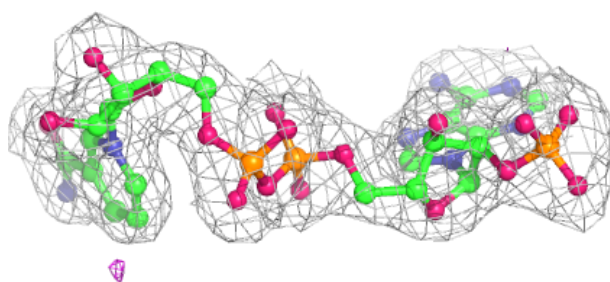
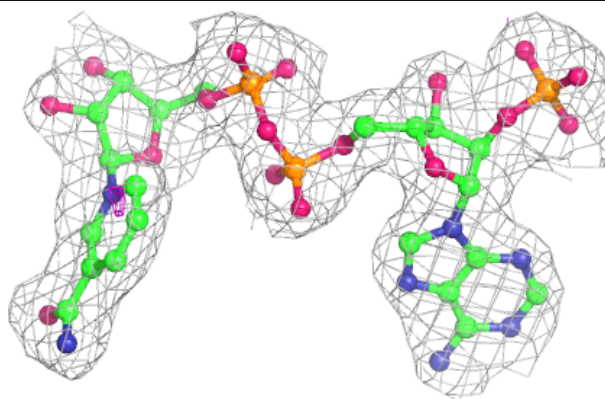


**Electron density around C81 A 502:**

$2mF_o-DF_c$  (at 0.7 rmsd) in gray  
 $mF_o-DF_c$  (at 3 rmsd) in purple (negative)  
and green (positive)

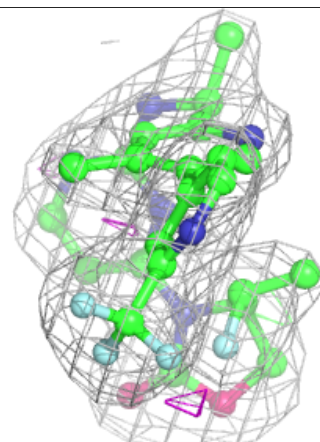
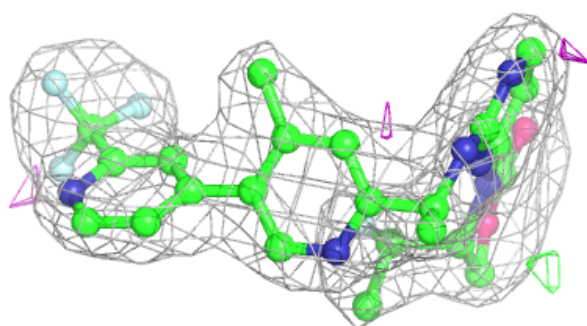
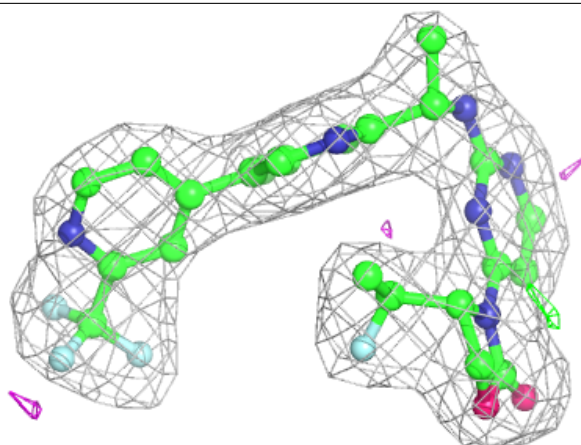
**Electron density around NDP A 501:**

$2mF_o-DF_c$  (at 0.7 rmsd) in gray  
 $mF_o-DF_c$  (at 3 rmsd) in purple (negative)  
and green (positive)

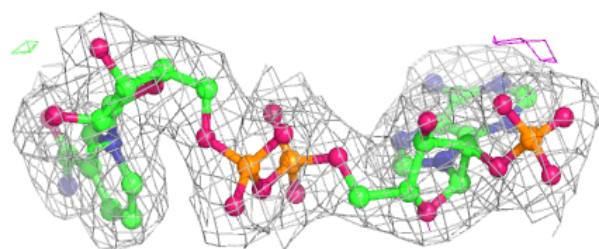
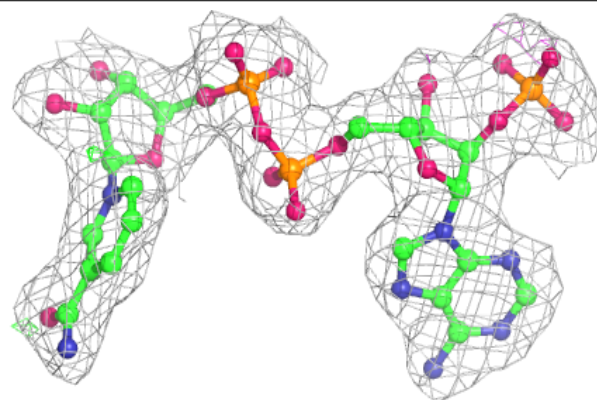


**Electron density around C81 B 502:**

$2mF_o-DF_c$  (at 0.7 rmsd) in gray  
 $mF_o-DF_c$  (at 3 rmsd) in purple (negative)  
and green (positive)

**Electron density around NDP B 501:**

$2mF_o-DF_c$  (at 0.7 rmsd) in gray  
 $mF_o-DF_c$  (at 3 rmsd) in purple (negative)  
and green (positive)



## 6.5 Other polymers [i](#)

There are no such residues in this entry.