



# Full wwPDB X-ray Structure Validation Report ⓘ

Dec 22, 2020 – 02:06 pm GMT

PDB ID : 7B0G  
Title : TgoT\_6G12 binary with 2 hCTPs  
Authors : Samson, C.; Legrand, P.; Tekpinar, M.; Rozenski, J.; Abramov, M.; Holliger, P.; Pinheiro, V.; Herdewijn, P.; Delarue, M.  
Deposited on : 2020-11-19  
Resolution : 3.00 Å(reported)

This is a Full wwPDB X-ray Structure Validation Report for a publicly released PDB entry.

We welcome your comments at [validation@mail.wwpdb.org](mailto:validation@mail.wwpdb.org)

A user guide is available at

<https://www.wwpdb.org/validation/2017/XrayValidationReportHelp>

with specific help available everywhere you see the ⓘ symbol.

---

The following versions of software and data (see [references ⓘ](#)) were used in the production of this report:

MolProbity : 4.02b-467  
Mogul : 1.8.5 (274361), CSD as541be (2020)  
Xtriage (Phenix) : 1.13  
EDS : 2.16  
buster-report : 1.1.7 (2018)  
Percentile statistics : 20191225.v01 (using entries in the PDB archive December 25th 2019)  
Refmac : 5.8.0158  
CCP4 : 7.0.044 (Gargrove)  
Ideal geometry (proteins) : Engh & Huber (2001)  
Ideal geometry (DNA, RNA) : Parkinson et al. (1996)  
Validation Pipeline (wwPDB-VP) : 2.16

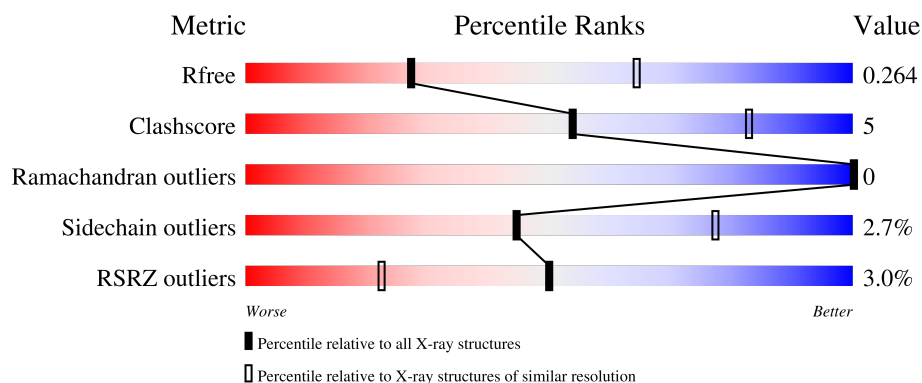
# 1 Overall quality at a glance

The following experimental techniques were used to determine the structure:

## *X-RAY DIFFRACTION*


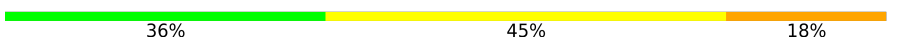

The reported resolution of this entry is 3.00 Å.

Percentile scores (ranging between 0-100) for global validation metrics of the entry are shown in the following graphic. The table shows the number of entries on which the scores are based.



Metric	Whole archive (#Entries)	Similar resolution (#Entries, resolution range(Å))
$R_{free}$	130704	2092 (3.00-3.00)
Clashscore	141614	2416 (3.00-3.00)
Ramachandran outliers	138981	2333 (3.00-3.00)
Sidechain outliers	138945	2336 (3.00-3.00)
RSRZ outliers	127900	1990 (3.00-3.00)

The table below summarises the geometric issues observed across the polymeric chains and their fit to the electron density. The red, orange, yellow and green segments of the lower bar indicate the fraction of residues that contain outliers for  $\geq 3$ , 2, 1 and 0 types of geometric quality criteria respectively. A grey segment represents the fraction of residues that are not modelled. The numeric value for each fraction is indicated below the corresponding segment, with a dot representing fractions  $\leq 5\%$ . The upper red bar (where present) indicates the fraction of residues that have poor fit to the electron density. The numeric value is given above the bar.

Mol	Chain	Length	Quality of chain
1	A	773	
2	P	11	
3	T	11	

The following table lists non-polymeric compounds, carbohydrate monomers and non-standard residues in protein, DNA, RNA chains that are outliers for geometric or electron-density-fit criteria:

Mol	Type	Chain	Res	Chirality	Geometry	Clashes	Electron density
2	6HC	P	13	-	-	X	-
2	6HC	P	14	-	-	X	-

## 2 Entry composition

There are 5 unique types of molecules in this entry. The entry contains 6535 atoms, of which 0 are hydrogens and 0 are deuteriums.

In the tables below, the ZeroOcc column contains the number of atoms modelled with zero occupancy, the AltConf column contains the number of residues with at least one atom in alternate conformation and the Trace column contains the number of residues modelled with at most 2 atoms.

- Molecule 1 is a protein called DNA polymerase.

Mol	Chain	Residues	Atoms					ZeroOcc	AltConf	Trace
1	A	737	Total	C	N	O	S	16	0	0
			6059	3917	1012	1116	14			

There are 18 discrepancies between the modelled and reference sequences:

Chain	Residue	Modelled	Actual	Comment	Reference
A	93	GLN	VAL	conflict	UNP P56689
A	141	ALA	ASP	conflict	UNP P56689
A	143	ALA	GLU	conflict	UNP P56689
A	485	LEU	ALA	conflict	UNP P56689
A	589	ALA	VAL	conflict	UNP P56689
A	609	LYS	GLU	conflict	UNP P56689
A	610	MET	ILE	conflict	UNP P56689
A	659	GLN	LYS	conflict	UNP P56689
A	664	GLN	GLU	conflict	UNP P56689
A	665	PRO	GLN	conflict	UNP P56689
A	668	LYS	ARG	conflict	UNP P56689
A	669	GLN	ASP	conflict	UNP P56689
A	671	HIS	LYS	conflict	UNP P56689
A	674	ARG	LYS	conflict	UNP P56689
A	676	ARG	THR	conflict	UNP P56689
A	681	SER	ALA	conflict	UNP P56689
A	704	PRO	LEU	conflict	UNP P56689
A	730	GLY	GLU	conflict	UNP P56689

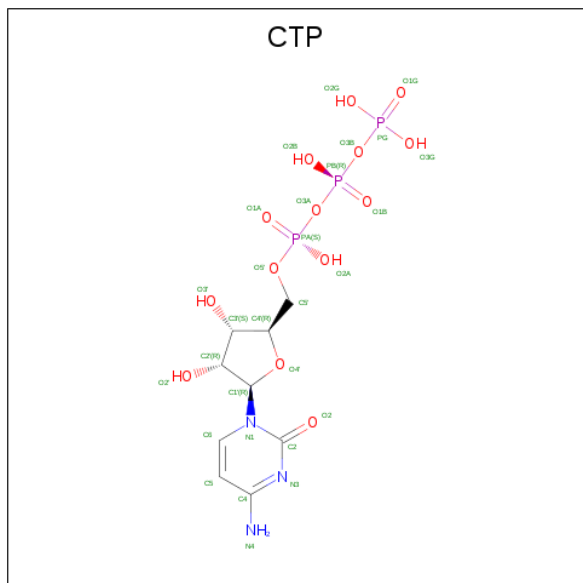
- Molecule 2 is a DNA chain called DNA (5'-D(P\*GP\*GP\*AP\*GP\*GP\*GP\*CP\*AP\*GP\*())-3').

Mol	Chain	Residues	Atoms					ZeroOcc	AltConf	Trace
2	P	11	Total	C	N	O	P	0	0	0
			233	109	49	64	11			

- Molecule 3 is a DNA chain called DNA (5'-D(P\*AP\*TP\*TP\*GP\*GP\*CP\*TP\*GP\*CP\*CP\*CP\*TP\*CP\*C)-3').

Mol	Chain	Residues	Atoms					ZeroOcc	AltConf	Trace
3	T	11	Total	C	N	O	P	0	0	0
			220	104	37	68	11			

- Molecule 4 is CYTIDINE-5'-TRIPHOSPHATE (three-letter code: CTP) (formula: C<sub>9</sub>H<sub>16</sub>N<sub>3</sub>O<sub>14</sub>P<sub>3</sub>).



Mol	Chain	Residues	Atoms			ZeroOcc	AltConf
4	A	1	Total	O	P	0	0
			13	10	3		

- Molecule 5 is PHOSPHATE ION (three-letter code: PO4) (formula: O<sub>4</sub>P).

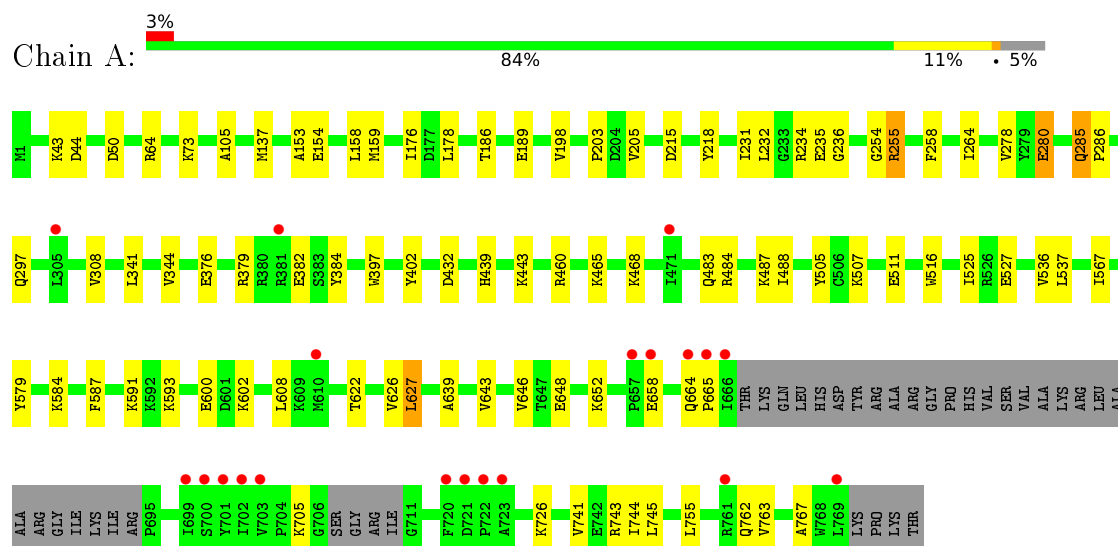


Mol	Chain	Residues	Atoms			ZeroOcc	AltConf
5	T	1	Total	O	P	0	0
			5	4	1		
5	T	1	Total	O	P	0	0
			5	4	1		

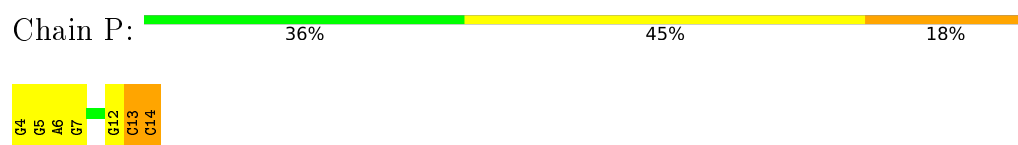
### 3 Residue-property plots [i](#)

These plots are drawn for all protein, RNA, DNA and oligosaccharide chains in the entry. The first graphic for a chain summarises the proportions of the various outlier classes displayed in the second graphic. The second graphic shows the sequence view annotated by issues in geometry and electron density. Residues are color-coded according to the number of geometric quality criteria for which they contain at least one outlier: green = 0, yellow = 1, orange = 2 and red = 3 or more. A red dot above a residue indicates a poor fit to the electron density ( $RSRZ > 2$ ). Stretches of 2 or more consecutive residues without any outlier are shown as a green connector. Residues present in the sample, but not in the model, are shown in grey.

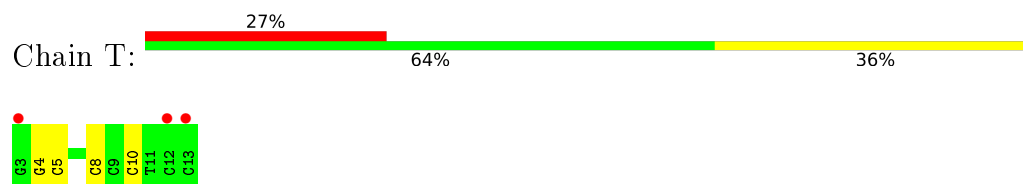
- Molecule 1: DNA polymerase



- Molecule 2: DNA (5'-D(P\*GP\*GP\*AP\*GP\*GP\*GP\*CP\*AP\*GP\*())P\*()-3')



- Molecule 3: DNA (5'-D(P\*AP\*TP\*TP\*GP\*GP\*CP\*TP\*GP\*CP\*CP\*CP\*TP\*CP\*C)-3')



## 4 Data and refinement statistics

Property	Value	Source
Space group	P 21 21 21	Depositor
Cell constants a, b, c, $\alpha$ , $\beta$ , $\gamma$	56.21Å 106.77Å 231.78Å 90.00° 90.00° 90.00°	Depositor
Resolution (Å)	49.74 – 3.00 49.74 – 3.00	Depositor EDS
% Data completeness (in resolution range)	100.0 (49.74-3.00) 100.0 (49.74-3.00)	Depositor EDS
$R_{merge}$	0.20	Depositor
$R_{sym}$	(Not available)	Depositor
$\langle I/\sigma(I) \rangle$ <sup>1</sup>	1.39 (at 3.01Å)	Xtriage
Refinement program	BUSTER 2.10.3 (20-MAY-2020)	Depositor
R, $R_{free}$	0.225 , 0.243 0.254 , 0.264	Depositor DCC
$R_{free}$ test set	1442 reflections (5.00%)	wwPDB-VP
Wilson B-factor (Å <sup>2</sup> )	109.2	Xtriage
Anisotropy	0.270	Xtriage
Bulk solvent $k_{sol}$ (e/Å <sup>3</sup> ), $B_{sol}$ (Å <sup>2</sup> )	0.29 , 77.1	EDS
L-test for twinning <sup>2</sup>	$\langle  L  \rangle = 0.47$ , $\langle L^2 \rangle = 0.30$	Xtriage
Estimated twinning fraction	No twinning to report.	Xtriage
$F_o, F_c$ correlation	0.94	EDS
Total number of atoms	6535	wwPDB-VP
Average B, all atoms (Å <sup>2</sup> )	128.0	wwPDB-VP

Xtriage's analysis on translational NCS is as follows: *The largest off-origin peak in the Patterson function is 4.36% of the height of the origin peak. No significant pseudotranslation is detected.*

<sup>1</sup>Intensities estimated from amplitudes.

<sup>2</sup>Theoretical values of  $\langle |L| \rangle$ ,  $\langle L^2 \rangle$  for acentric reflections are 0.5, 0.333 respectively for untwinned datasets, and 0.375, 0.2 for perfectly twinned datasets.



## 5 Model quality [i](#)

### 5.1 Standard geometry [i](#)

Bond lengths and bond angles in the following residue types are not validated in this section: PO4, CTP, 6HC

The Z score for a bond length (or angle) is the number of standard deviations the observed value is removed from the expected value. A bond length (or angle) with  $|Z| > 5$  is considered an outlier worth inspection. RMSZ is the root-mean-square of all Z scores of the bond lengths (or angles).

Mol	Chain	Bond lengths		Bond angles	
		RMSZ	# Z  >5	RMSZ	# Z  >5
1	A	0.27	0/6199	0.46	0/8360
2	P	0.71	0/218	0.93	0/336
3	T	0.66	0/244	0.95	0/373
All	All	0.31	0/6661	0.51	0/9069

There are no bond length outliers.

There are no bond angle outliers.

There are no chirality outliers.

There are no planarity outliers.

### 5.2 Too-close contacts [i](#)

In the following table, the Non-H and H(model) columns list the number of non-hydrogen atoms and hydrogen atoms in the chain respectively. The H(added) column lists the number of hydrogen atoms added and optimized by MolProbity. The Clashes column lists the number of clashes within the asymmetric unit, whereas Symm-Clashes lists symmetry-related clashes.

Mol	Chain	Non-H	H(model)	H(added)	Clashes	Symm-Clashes
1	A	6059	0	6079	52	0
2	P	233	0	125	17	0
3	T	220	0	124	9	0
4	A	13	0	0	2	0
5	T	10	0	0	0	0
All	All	6535	0	6328	67	0

The all-atom clashscore is defined as the number of clashes found per 1000 atoms (including hydrogen atoms). The all-atom clashscore for this structure is 5.

All (67) close contacts within the same asymmetric unit are listed below, sorted by their clash

magnitude.

Atom-1	Atom-2	Interatomic distance (Å)	Clash overlap (Å)
1:A:376:GLU:HA	1:A:379:ARG:HD3	1.51	0.92
2:P:13:6HC:N4	3:T:4:DG:N2	2.33	0.76
2:P:14:6HC:O4'	2:P:14:6HC:C6	2.30	0.72
1:A:159:MET:HE1	1:A:308:VAL:HG12	1.76	0.68
2:P:13:6HC:C4	3:T:4:DG:H22	2.09	0.65
4:A:801:CTP:O5'	2:P:14:6HC:N4	2.28	0.64
1:A:643:VAL:HG11	1:A:755:LEU:HD23	1.80	0.63
1:A:159:MET:CE	1:A:308:VAL:HG12	2.31	0.61
2:P:14:6HC:O2	2:P:14:6HC:H2''	1.99	0.61
1:A:264:ILE:HD13	1:A:278:VAL:HG11	1.82	0.60
2:P:13:6HC:N4	3:T:5:DC:C2	2.69	0.60
1:A:745:LEU:HD12	1:A:755:LEU:HD21	1.84	0.59
2:P:14:6HC:O4'	2:P:14:6HC:H6	2.04	0.58
2:P:12:DG:H2'	2:P:13:6HC:C6'	2.34	0.57
2:P:13:6HC:N4	3:T:4:DG:C2	2.73	0.57
1:A:593:LYS:NZ	3:T:10:DC:H5'	2.20	0.56
1:A:439:HIS:HE1	1:A:511:GLU:OE1	1.89	0.56
2:P:12:DG:H2'	2:P:13:6HC:H6'2	1.86	0.56
1:A:527:GLU:HG2	1:A:567:ILE:HD13	1.88	0.55
1:A:402:TYR:O	1:A:579:TYR:O	2.24	0.55
1:A:384:TYR:CD1	1:A:507:LYS:HD2	2.42	0.55
1:A:505:TYR:OH	1:A:507:LYS:HE2	2.07	0.54
1:A:622:THR:HG21	1:A:646:VAL:HG21	1.89	0.54
1:A:176:ILE:HG22	1:A:178:LEU:HD23	1.90	0.53
1:A:203:PRO:O	1:A:255:ARG:NH1	2.41	0.53
1:A:608:LEU:HD13	1:A:744:ILE:HG12	1.91	0.53
2:P:13:6HC:N4	3:T:5:DC:N3	2.57	0.53
1:A:622:THR:CG2	1:A:646:VAL:HG21	2.39	0.53
2:P:4:DG:H4'	2:P:5:DG:OP1	2.12	0.50
1:A:525:ILE:HG23	1:A:536:VAL:HG21	1.94	0.49
1:A:432:ASP:CG	1:A:443:LYS:HD2	2.33	0.49
1:A:43:LYS:HD3	1:A:105:ALA:HA	1.93	0.49
1:A:397:TRP:CE2	1:A:537:LEU:HD22	2.48	0.49
1:A:465:LYS:NZ	1:A:468:LYS:HE3	2.28	0.49
1:A:186:THR:HG23	1:A:189:GLU:H	1.78	0.48
1:A:280:GLU:HG2	1:A:285:GLN:O	2.13	0.48
1:A:231:ILE:HG23	1:A:236:GLY:HA2	1.96	0.48
2:P:14:6HC:C2'	2:P:14:6HC:O2	2.62	0.47
1:A:382:GLU:O	1:A:507:LYS:HE3	2.14	0.47
1:A:600:GLU:HB2	1:A:602:LYS:HE3	1.96	0.47
1:A:627:LEU:HD13	1:A:744:ILE:HD13	1.97	0.47

*Continued on next page...*

*Continued from previous page...*

Atom-1	Atom-2	Interatomic distance (Å)	Clash overlap (Å)
2:P:6:DA:C6	2:P:7:DG:C2	3.03	0.47
1:A:234:ARG:HB2	1:A:254:GLY:HA3	1.96	0.47
1:A:280:GLU:HG2	1:A:286:PRO:HA	1.97	0.46
1:A:705:LYS:HD3	1:A:726:LYS:HB2	1.98	0.45
1:A:762:GLN:HB3	1:A:767:ALA:HB1	1.99	0.45
1:A:487:LYS:NZ	2:P:14:6HC:H5	2.33	0.44
1:A:622:THR:HG21	1:A:646:VAL:HG11	2.00	0.43
1:A:137:MET:HG2	1:A:205:VAL:HB	1.99	0.43
1:A:460:ARG:NH2	1:A:483:GLN:HE21	2.17	0.43
1:A:153:ALA:HA	1:A:218:TYR:CZ	2.54	0.43
1:A:626:VAL:HG13	1:A:639:ALA:HB1	2.01	0.43
1:A:643:VAL:HG21	1:A:741:VAL:HG11	1.99	0.42
1:A:593:LYS:HZ3	1:A:743:ARG:HH21	1.68	0.42
1:A:593:LYS:HZ2	3:T:10:DC:H5'	1.84	0.42
1:A:593:LYS:HZ1	3:T:10:DC:H5'	1.85	0.42
1:A:341:LEU:HA	1:A:344:VAL:HG22	2.02	0.41
4:A:801:CTP:O5'	2:P:14:6HC:H5	2.20	0.41
1:A:198:VAL:HG11	1:A:232:LEU:HD22	2.02	0.41
1:A:484:ARG:O	1:A:488:ILE:HG12	2.20	0.41
1:A:591:LYS:HD3	3:T:8:DC:H5''	2.01	0.41
1:A:587:PHE:CZ	1:A:744:ILE:HG23	2.56	0.41
1:A:648:GLU:HG2	1:A:652:LYS:HE2	2.03	0.40
1:A:762:GLN:HB3	1:A:767:ALA:CB	2.51	0.40
1:A:487:LYS:HZ1	2:P:14:6HC:H5	1.87	0.40
1:A:664:GLN:HA	1:A:665:PRO:HD3	1.97	0.40
1:A:258:PHE:CD1	1:A:341:LEU:HD21	2.56	0.40

There are no symmetry-related clashes.

## 5.3 Torsion angles [i](#)

### 5.3.1 Protein backbone [i](#)

In the following table, the Percentiles column shows the percent Ramachandran outliers of the chain as a percentile score with respect to all X-ray entries followed by that with respect to entries of similar resolution.

The Analysed column shows the number of residues for which the backbone conformation was analysed, and the total number of residues.

Mol	Chain	Analysed	Favoured	Allowed	Outliers	Percentiles	
1	A	731/773 (95%)	711 (97%)	20 (3%)	0	100	100

There are no Ramachandran outliers to report.

### 5.3.2 Protein sidechains ⓘ

In the following table, the Percentiles column shows the percent sidechain outliers of the chain as a percentile score with respect to all X-ray entries followed by that with respect to entries of similar resolution.

The Analysed column shows the number of residues for which the sidechain conformation was analysed, and the total number of residues.

Mol	Chain	Analysed	Rotameric	Outliers	Percentiles	
1	A	639/668 (96%)	622 (97%)	17 (3%)	44	77

All (17) residues with a non-rotameric sidechain are listed below:

Mol	Chain	Res	Type
1	A	44	ASP
1	A	50	ASP
1	A	64	ARG
1	A	73	LYS
1	A	154	GLU
1	A	158	LEU
1	A	215	ASP
1	A	235	GLU
1	A	255	ARG
1	A	280	GLU
1	A	285	GLN
1	A	297	GLN
1	A	516	TRP
1	A	584	LYS
1	A	627	LEU
1	A	658	GLU
1	A	763	VAL

Sometimes sidechains can be flipped to improve hydrogen bonding and reduce clashes. All (4) such sidechains are listed below:

Mol	Chain	Res	Type
1	A	297	GLN

*Continued on next page...*

*Continued from previous page...*

Mol	Chain	Res	Type
1	A	439	HIS
1	A	483	GLN
1	A	725	HIS

### 5.3.3 RNA ⓘ

There are no RNA molecules in this entry.

## 5.4 Non-standard residues in protein, DNA, RNA chains ⓘ

2 non-standard protein/DNA/RNA residues are modelled in this entry.

In the following table, the Counts columns list the number of bonds (or angles) for which Mogul statistics could be retrieved, the number of bonds (or angles) that are observed in the model and the number of bonds (or angles) that are defined in the Chemical Component Dictionary. The Link column lists molecule types, if any, to which the group is linked. The Z score for a bond length (or angle) is the number of standard deviations the observed value is removed from the expected value. A bond length (or angle) with  $|Z| > 2$  is considered an outlier worth inspection. RMSZ is the root-mean-square of all Z scores of the bond lengths (or angles).

Mol	Type	Chain	Res	Link	Bond lengths			Bond angles		
					Counts	RMSZ	# $ Z  > 2$	Counts	RMSZ	# $ Z  > 2$
2	6HC	P	14	2	15,21,22	1.72	3 (20%)	17,29,32	6.82	5 (29%)
2	6HC	P	13	3,2	15,21,22	1.68	2 (13%)	17,29,32	6.99	4 (23%)

In the following table, the Chirals column lists the number of chiral outliers, the number of chiral centers analysed, the number of these observed in the model and the number defined in the Chemical Component Dictionary. Similar counts are reported in the Torsion and Rings columns. '-' means no outliers of that kind were identified.

Mol	Type	Chain	Res	Link	Chirals	Torsions	Rings
2	6HC	P	14	2	-	1/5/22/23	0/2/2/2
2	6HC	P	13	3,2	-	0/5/22/23	0/2/2/2

All (5) bond length outliers are listed below:

Mol	Chain	Res	Type	Atoms	Z	Observed(Å)	Ideal(Å)
2	P	13	6HC	C6'-C1'	-4.59	1.44	1.52
2	P	14	6HC	C6'-C1'	-4.19	1.44	1.52
2	P	14	6HC	O4'-C6'	-3.14	1.38	1.43
2	P	14	6HC	C6-N1	2.69	1.39	1.35

*Continued on next page...*

*Continued from previous page...*

Mol	Chain	Res	Type	Atoms	Z	Observed(Å)	Ideal(Å)
2	P	13	6HC	O4'-C6'	-2.38	1.39	1.43

All (9) bond angle outliers are listed below:

Mol	Chain	Res	Type	Atoms	Z	Observed(°)	Ideal(°)
2	P	13	6HC	O4'-C6'-C1'	-27.41	69.75	111.47
2	P	14	6HC	O4'-C6'-C1'	-26.04	71.84	111.47
2	P	14	6HC	C2'-C3'-C4'	-6.29	102.61	110.77
2	P	14	6HC	C3'-C2'-C1'	-6.11	105.23	112.39
2	P	13	6HC	C3'-C2'-C1'	-6.11	105.24	112.39
2	P	14	6HC	C2-N3-C4	4.41	120.81	116.34
2	P	13	6HC	C2-N3-C4	4.08	120.48	116.34
2	P	13	6HC	C2'-C3'-C4'	-4.06	105.50	110.77
2	P	14	6HC	O4'-C4'-C3'	-3.26	104.17	109.64

There are no chirality outliers.

All (1) torsion outliers are listed below:

Mol	Chain	Res	Type	Atoms
2	P	14	6HC	C6'-C1'-N1-C2

There are no ring outliers.

2 monomers are involved in 15 short contacts:

Mol	Chain	Res	Type	Clashes	Symm-Clashes
2	P	14	6HC	8	0
2	P	13	6HC	7	0

## 5.5 Carbohydrates [i](#)

There are no monosaccharides in this entry.

## 5.6 Ligand geometry [i](#)

3 ligands are modelled in this entry.

In the following table, the Counts columns list the number of bonds (or angles) for which Mogul statistics could be retrieved, the number of bonds (or angles) that are observed in the model and the number of bonds (or angles) that are defined in the Chemical Component Dictionary. The Link column lists molecule types, if any, to which the group is linked. The Z score for a bond

length (or angle) is the number of standard deviations the observed value is removed from the expected value. A bond length (or angle) with  $|Z| > 2$  is considered an outlier worth inspection. RMSZ is the root-mean-square of all Z scores of the bond lengths (or angles).

Mol	Type	Chain	Res	Link	Bond lengths			Bond angles		
					Counts	RMSZ	$\# Z  > 2$	Counts	RMSZ	$\# Z  > 2$
5	PO4	T	102	-	4,4,4	2.48	1 (25%)	6,6,6	0.45	0
4	CTP	A	801	-	8,12,30	1.17	0	15,20,47	1.12	1 (6%)
5	PO4	T	101	-	4,4,4	1.98	1 (25%)	6,6,6	0.40	0

In the following table, the Chirals column lists the number of chiral outliers, the number of chiral centers analysed, the number of these observed in the model and the number defined in the Chemical Component Dictionary. Similar counts are reported in the Torsion and Rings columns. '-' means no outliers of that kind were identified.

Mol	Type	Chain	Res	Link	Chirals	Torsions	Rings
4	CTP	A	801	-	-	1/12/12/38	-

All (2) bond length outliers are listed below:

Mol	Chain	Res	Type	Atoms	Z	Observed(Å)	Ideal(Å)
5	T	102	PO4	P-O1	4.09	1.60	1.50
5	T	101	PO4	P-O1	2.08	1.55	1.50

All (1) bond angle outliers are listed below:

Mol	Chain	Res	Type	Atoms	Z	Observed(°)	Ideal(°)
4	A	801	CTP	O2A-PA-O3A	2.27	112.25	104.64

There are no chirality outliers.

All (1) torsion outliers are listed below:

Mol	Chain	Res	Type	Atoms
4	A	801	CTP	PA-O3A-PB-O2B

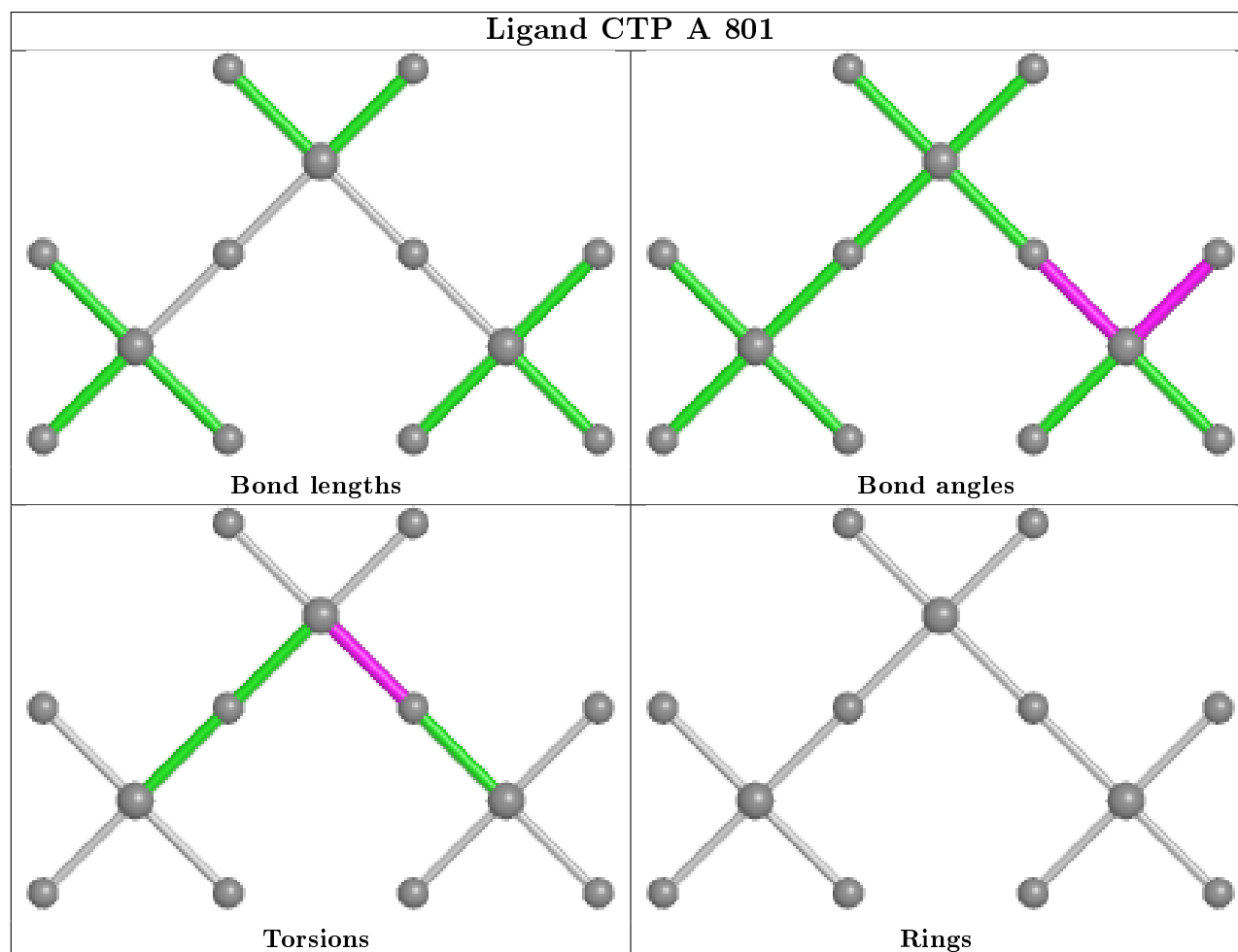
There are no ring outliers.

1 monomer is involved in 2 short contacts:

Mol	Chain	Res	Type	Clashes	Symm-Clashes
4	A	801	CTP	2	0

The following is a two-dimensional graphical depiction of Mogul quality analysis of bond lengths,

bond angles, torsion angles, and ring geometry for all instances of the Ligand of Interest. In addition, ligands with molecular weight > 250 and outliers as shown on the validation Tables will also be included. For torsion angles, if less than 5% of the Mogul distribution of torsion angles is within 10 degrees of the torsion angle in question, then that torsion angle is considered an outlier. Any bond that is central to one or more torsion angles identified as an outlier by Mogul will be highlighted in the graph. For rings, the root-mean-square deviation (RMSD) between the ring in question and similar rings identified by Mogul is calculated over all ring torsion angles. If the average RMSD is greater than 60 degrees and the minimal RMSD between the ring in question and any Mogul-identified rings is also greater than 60 degrees, then that ring is considered an outlier. The outliers are highlighted in purple. The color gray indicates Mogul did not find sufficient equivalents in the CSD to analyse the geometry.



## 5.7 Other polymers [i](#)

There are no such residues in this entry.

## 5.8 Polymer linkage issues [i](#)

There are no chain breaks in this entry.



## 6 Fit of model and data ⓘ

### 6.1 Protein, DNA and RNA chains ⓘ

In the following table, the column labelled ‘#RSRZ> 2’ contains the number (and percentage) of RSRZ outliers, followed by percent RSRZ outliers for the chain as percentile scores relative to all X-ray entries and entries of similar resolution. The OWAB column contains the minimum, median, 95<sup>th</sup> percentile and maximum values of the occupancy-weighted average B-factor per residue. The column labelled ‘Q< 0.9’ lists the number of (and percentage) of residues with an average occupancy less than 0.9.

Mol	Chain	Analysed	<RSRZ>	#RSRZ>2	OWAB(Å <sup>2</sup> )	Q<0.9
1	A	737/773 (95%)	-0.03	20 (2%) 54 26	76, 119, 176, 223	4 (0%)
2	P	9/11 (81%)	0.18	0 100 100	194, 203, 223, 225	0
3	T	11/11 (100%)	0.60	3 (27%) 0 0	94, 169, 210, 213	0
All	All	757/795 (95%)	-0.02	23 (3%) 50 22	76, 120, 195, 225	4 (0%)

All (23) RSRZ outliers are listed below:

Mol	Chain	Res	Type	RSRZ
1	A	665	PRO	5.0
1	A	701	TYR	4.0
1	A	664	GLN	3.7
1	A	657	PRO	3.6
1	A	722	PRO	3.5
1	A	723	ALA	3.4
1	A	720	PHE	3.4
1	A	699	ILE	3.1
1	A	666	ILE	3.0
1	A	700	SER	2.8
3	T	3	DG	2.7
1	A	721	ASP	2.6
1	A	769	LEU	2.5
1	A	610	MET	2.5
1	A	702	ILE	2.4
1	A	305	LEU	2.4
3	T	13	DC	2.3
3	T	12	DC	2.2
1	A	703	VAL	2.2
1	A	761	ARG	2.2
1	A	471	ILE	2.1
1	A	381	ARG	2.1
1	A	658	GLU	2.0

## 6.2 Non-standard residues in protein, DNA, RNA chains [i](#)

In the following table, the Atoms column lists the number of modelled atoms in the group and the number defined in the chemical component dictionary. The B-factors column lists the minimum, median, 95<sup>th</sup> percentile and maximum values of B factors of atoms in the group. The column labelled 'Q< 0.9' lists the number of atoms with occupancy less than 0.9.

Mol	Type	Chain	Res	Atoms	RSCC	RSR	B-factors(Å <sup>2</sup> )	Q<0.9
2	6HC	P	14	20/21	0.70	0.33	109,195,195,195	0
2	6HC	P	13	20/21	0.70	0.28	193,194,194,194	0

## 6.3 Carbohydrates [i](#)

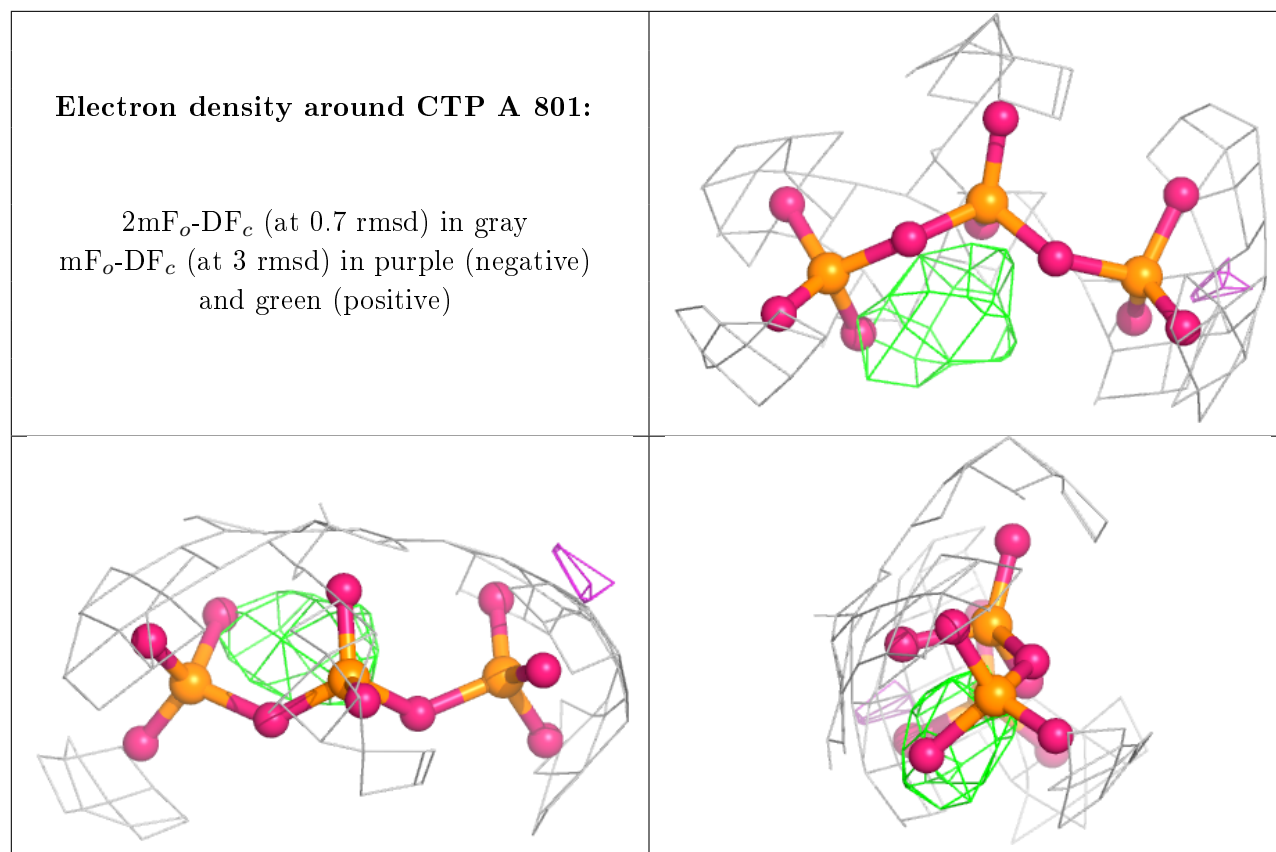
There are no monosaccharides in this entry.

## 6.4 Ligands [i](#)

In the following table, the Atoms column lists the number of modelled atoms in the group and the number defined in the chemical component dictionary. The B-factors column lists the minimum, median, 95<sup>th</sup> percentile and maximum values of B factors of atoms in the group. The column labelled 'Q< 0.9' lists the number of atoms with occupancy less than 0.9.

Mol	Type	Chain	Res	Atoms	RSCC	RSR	B-factors(Å <sup>2</sup> )	Q<0.9
5	PO4	T	101	5/5	0.28	0.36	233,233,233,233	0
5	PO4	T	102	5/5	0.31	0.23	221,221,221,221	0
4	CTP	A	801	13/29	0.92	0.24	147,148,148,148	0

The following is a graphical depiction of the model fit to experimental electron density of all instances of the Ligand of Interest. In addition, ligands with molecular weight > 250 and outliers as shown on the geometry validation Tables will also be included. Each fit is shown from different orientation to approximate a three-dimensional view.



## 6.5 Other polymers [i](#)

There are no such residues in this entry.