



# Full wwPDB X-ray Structure Validation Report ⓘ

Aug 9, 2020 – 08:52 AM BST

PDB ID : 6B1V  
Title : Crystal structure of Ps i-CgsB C78S in complex with i-neocarratetraose  
Authors : Hettle, A.G.; Boraston, A.B.  
Deposited on : 2017-09-19  
Resolution : 2.84 Å(reported)

This is a Full wwPDB X-ray Structure Validation Report for a publicly released PDB entry.

We welcome your comments at [validation@mail.wwpdb.org](mailto:validation@mail.wwpdb.org)

A user guide is available at

<https://www.wwpdb.org/validation/2017/XrayValidationReportHelp>

with specific help available everywhere you see the ⓘ symbol.

---

The following versions of software and data (see [references ⓘ](#)) were used in the production of this report:

MolProbity : 4.02b-467  
Mogul : 1.8.5 (274361), CSD as541be (2020)  
Xtriage (Phenix) : 1.13  
EDS : 2.13.1  
Percentile statistics : 20191225.v01 (using entries in the PDB archive December 25th 2019)  
Refmac : 5.8.0158  
CCP4 : 7.0.044 (Gargrove)  
Ideal geometry (proteins) : Engh & Huber (2001)  
Ideal geometry (DNA, RNA) : Parkinson et al. (1996)  
Validation Pipeline (wwPDB-VP) : 2.13.1

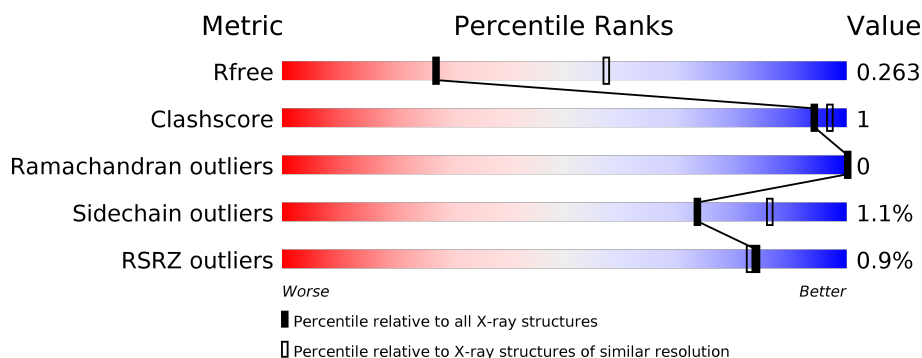
# 1 Overall quality at a glance

The following experimental techniques were used to determine the structure:

*X-RAY DIFFRACTION*

The reported resolution of this entry is 2.84 Å.

Percentile scores (ranging between 0-100) for global validation metrics of the entry are shown in the following graphic. The table shows the number of entries on which the scores are based.



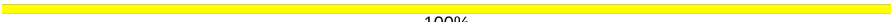
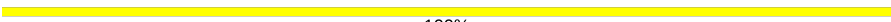
Metric	Whole archive (#Entries)	Similar resolution (#Entries, resolution range(Å))
$R_{free}$	130704	1031 (2.86-2.82)
Clashscore	141614	1078 (2.86-2.82)
Ramachandran outliers	138981	1050 (2.86-2.82)
Sidechain outliers	138945	1051 (2.86-2.82)
RSRZ outliers	127900	1019 (2.86-2.82)

The table below summarises the geometric issues observed across the polymeric chains and their fit to the electron density. The red, orange, yellow and green segments on the lower bar indicate the fraction of residues that contain outliers for  $\geq 3$ , 2, 1 and 0 types of geometric quality criteria respectively. A grey segment represents the fraction of residues that are not modelled. The numeric value for each fraction is indicated below the corresponding segment, with a dot representing fractions  $\leq 5\%$ . The upper red bar (where present) indicates the fraction of residues that have poor fit to the electron density. The numeric value is given above the bar.

Mol	Chain	Length	Quality of chain
1	A	452	<div> <div>%</div> <div> <div></div> <div>96%</div> <div>.</div> </div> </div>
1	B	452	<div> <div>%</div> <div> <div></div> <div>95%</div> <div>5%</div> </div> </div>
1	C	452	<div> <div></div> <div> <div></div> <div>95%</div> <div>5%</div> </div> </div>
2	D	4	<div> <div></div> <div>100%</div> </div>
2	E	4	<div> <div></div> <div>100%</div> </div>
2	F	4	<div> <div></div> <div>100%</div> </div>

*Continued on next page...*

*Continued from previous page...*

Mol	Chain	Length	Quality of chain
2	G	4	 100%
2	H	4	 100%

## 2 Entry composition [i](#)

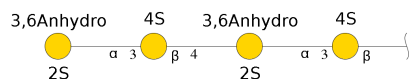
There are 5 unique types of molecules in this entry. The entry contains 11067 atoms, of which 0 are hydrogens and 0 are deuteriums.

In the tables below, the ZeroOcc column contains the number of atoms modelled with zero occupancy, the AltConf column contains the number of residues with at least one atom in alternate conformation and the Trace column contains the number of residues modelled with at most 2 atoms.

- Molecule 1 is a protein called Iota-carrageenan sulfatase.

Mol	Chain	Residues	Atoms					ZeroOcc	AltConf	Trace
1	A	452	Total	C	N	O	S	0	0	0
			3556	2273	615	656	12			
1	B	452	Total	C	N	O	S	0	0	0
			3574	2282	620	660	12			
1	C	452	Total	C	N	O	S	0	0	0
			3571	2279	621	659	12			

- Molecule 2 is an oligosaccharide called 3,6-anhydro-2-O-sulfo- $\alpha$ -D-galactopyranose-(1-3)-4-O-sulfo- $\beta$ -D-galactopyranose-(1-4)-3,6-anhydro-2-O-sulfo- $\alpha$ -D-galactopyranose-(1-3)-4-O-sulfo- $\beta$ -D-galactopyranose.



Mol	Chain	Residues	Atoms				ZeroOcc	AltConf	Trace
2	D	4	Total	C	O	S	0	0	0
			59	24	31	4			
2	E	4	Total	C	O	S	0	0	0
			59	24	31	4			
2	F	4	Total	C	O	S	0	0	0
			59	24	31	4			
2	G	4	Total	C	O	S	0	0	0
			59	24	31	4			
2	H	4	Total	C	O	S	0	0	0
			59	24	31	4			

- Molecule 3 is CALCIUM ION (three-letter code: CA) (formula: Ca).

Mol	Chain	Residues	Atoms		ZeroOcc	AltConf
3	B	1	Total	Ca	0	0
			1	1		

*Continued on next page...*

*Continued from previous page...*

Mol	Chain	Residues	Atoms		ZeroOcc	AltConf
3	A	1	Total	Ca	0	0
			1	1		
3	C	1	Total	Ca	0	0
			1	1		

- Molecule 4 is 1,2-ETHANEDIOL (three-letter code: EDO) (formula: C<sub>2</sub>H<sub>6</sub>O<sub>2</sub>).



Mol	Chain	Residues	Atoms			ZeroOcc	AltConf
4	A	1	Total	C	O	0	0
			4	2	2		

- Molecule 5 is water.

Mol	Chain	Residues	Atoms		ZeroOcc	AltConf
5	A	20	Total	O	0	0
			20	20		
5	B	22	Total	O	0	0
			22	22		
5	C	22	Total	O	0	0
			22	22		

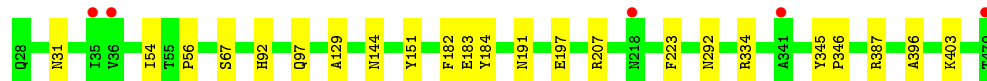
### 3 Residue-property plots [i](#)

These plots are drawn for all protein, RNA, DNA and oligosaccharide chains in the entry. The first graphic for a chain summarises the proportions of the various outlier classes displayed in the second graphic. The second graphic shows the sequence view annotated by issues in geometry and electron density. Residues are color-coded according to the number of geometric quality criteria for which they contain at least one outlier: green = 0, yellow = 1, orange = 2 and red = 3 or more. A red dot above a residue indicates a poor fit to the electron density ( $RSRZ > 2$ ). Stretches of 2 or more consecutive residues without any outlier are shown as a green connector. Residues present in the sample, but not in the model, are shown in grey.

- Molecule 1: Iota-carrageenan sulfatase



- Molecule 1: Iota-carrageenan sulfatase



- Molecule 1: Iota-carrageenan sulfatase



- Molecule 2: 3,6-anhydro-2-O-sulfo-alpha-D-galactopyranose-(1-3)-4-O-sulfo-beta-D-galactopyranose-(1-4)-3,6-anhydro-2-O-sulfo-alpha-D-galactopyranose-(1-3)-4-O-sulfo-beta-D-galactopyranose



- Molecule 2: 3,6-anhydro-2-O-sulfo-alpha-D-galactopyranose-(1-3)-4-O-sulfo-beta-D-galactopyranose-(1-4)-3,6-anhydro-2-O-sulfo-alpha-D-galactopyranose-(1-3)-4-O-sulfo-beta-D-galactopyranose




- Molecule 2: 3,6-anhydro-2-O-sulfo-alpha-D-galactopyranose-(1-3)-4-O-sulfo-beta-D-galactopyranose-(1-4)-3,6-anhydro-2-O-sulfo-alpha-D-galactopyranose-(1-3)-4-O-sulfo-beta-D-galactopyranose

Chain F:  100%

G4S1  
D6S2  
G4S3  
D6S4

- Molecule 2: 3,6-anhydro-2-O-sulfo-alpha-D-galactopyranose-(1-3)-4-O-sulfo-beta-D-galactopyranose-(1-4)-3,6-anhydro-2-O-sulfo-alpha-D-galactopyranose-(1-3)-4-O-sulfo-beta-D-galactopyranose

Chain G:  100%

G4S1  
D6S2  
G4S3  
D6S4

- Molecule 2: 3,6-anhydro-2-O-sulfo-alpha-D-galactopyranose-(1-3)-4-O-sulfo-beta-D-galactopyranose-(1-4)-3,6-anhydro-2-O-sulfo-alpha-D-galactopyranose-(1-3)-4-O-sulfo-beta-D-galactopyranose

Chain H:  100%

G4S1  
D6S2  
G4S3  
D6S4

## 4 Data and refinement statistics

Property	Value	Source
Space group	P 43 21 2	Depositor
Cell constants a, b, c, $\alpha$ , $\beta$ , $\gamma$	130.44Å 130.44Å 229.75Å 90.00° 90.00° 90.00°	Depositor
Resolution (Å)	113.43 – 2.84 29.70 – 2.84	Depositor EDS
% Data completeness (in resolution range)	96.0 (113.43-2.84) 96.1 (29.70-2.84)	Depositor EDS
$R_{merge}$	(Not available)	Depositor
$R_{sym}$	(Not available)	Depositor
$\langle I/\sigma(I) \rangle$ <sup>1</sup>	5.03 (at 2.85Å)	Xtriage
Refinement program	REFMAC 5.8.0158	Depositor
R, $R_{free}$	0.234 , 0.264 0.236 , 0.263	Depositor DCC
$R_{free}$ test set	2214 reflections (4.84%)	wwPDB-VP
Wilson B-factor (Å <sup>2</sup> )	54.4	Xtriage
Anisotropy	0.103	Xtriage
Bulk solvent $k_{sol}$ (e/Å <sup>3</sup> ), $B_{sol}$ (Å <sup>2</sup> )	0.31 , 38.4	EDS
L-test for twinning <sup>2</sup>	$\langle  L  \rangle = 0.52$ , $\langle L^2 \rangle = 0.36$	Xtriage
Estimated twinning fraction	No twinning to report.	Xtriage
$F_o, F_c$ correlation	0.92	EDS
Total number of atoms	11067	wwPDB-VP
Average B, all atoms (Å <sup>2</sup> )	48.0	wwPDB-VP

Xtriage's analysis on translational NCS is as follows: *The largest off-origin peak in the Patterson function is 2.92% of the height of the origin peak. No significant pseudotranslation is detected.*

<sup>1</sup>Intensities estimated from amplitudes.

<sup>2</sup>Theoretical values of  $\langle |L| \rangle$ ,  $\langle L^2 \rangle$  for acentric reflections are 0.5, 0.333 respectively for untwinned datasets, and 0.375, 0.2 for perfectly twinned datasets.



## 5 Model quality [i](#)

### 5.1 Standard geometry [i](#)

Bond lengths and bond angles in the following residue types are not validated in this section: DGS, CA, G4S, EDO

The Z score for a bond length (or angle) is the number of standard deviations the observed value is removed from the expected value. A bond length (or angle) with  $|Z| > 5$  is considered an outlier worth inspection. RMSZ is the root-mean-square of all Z scores of the bond lengths (or angles).

Mol	Chain	Bond lengths		Bond angles	
		RMSZ	# Z  >5	RMSZ	# Z  >5
1	A	0.45	0/3662	0.61	0/4974
1	B	0.46	0/3680	0.63	0/4996
1	C	0.44	0/3677	0.62	0/4992
All	All	0.45	0/11019	0.62	0/14962

There are no bond length outliers.

There are no bond angle outliers.

There are no chirality outliers.

There are no planarity outliers.

### 5.2 Too-close contacts [i](#)

In the following table, the Non-H and H(model) columns list the number of non-hydrogen atoms and hydrogen atoms in the chain respectively. The H(added) column lists the number of hydrogen atoms added and optimized by MolProbity. The Clashes column lists the number of clashes within the asymmetric unit, whereas Symm-Clashes lists symmetry related clashes.

Mol	Chain	Non-H	H(model)	H(added)	Clashes	Symm-Clashes
1	A	3556	0	3346	8	0
1	B	3574	0	3379	10	0
1	C	3571	0	3375	10	0
2	D	59	0	31	0	0
2	E	59	0	32	0	0
2	F	59	0	34	0	0
2	G	59	0	33	0	0
2	H	59	0	32	0	0
3	A	1	0	0	0	0
3	B	1	0	0	0	0

*Continued on next page...*

*Continued from previous page...*

Mol	Chain	Non-H	H(model)	H(added)	Clashes	Symm-Clashes
3	C	1	0	0	0	0
4	A	4	0	6	0	0
5	A	20	0	0	0	0
5	B	22	0	0	0	0
5	C	22	0	0	1	0
All	All	11067	0	10268	28	0

The all-atom clashscore is defined as the number of clashes found per 1000 atoms (including hydrogen atoms). The all-atom clashscore for this structure is 1.

All (28) close contacts within the same asymmetric unit are listed below, sorted by their clash magnitude.

Atom-1	Atom-2	Interatomic distance (Å)	Clash overlap (Å)
1:C:183:GLU:HG3	5:C:604:HOH:O	2.00	0.60
1:C:144:ASN:HD21	1:C:191:ASN:HA	1.71	0.55
1:B:144:ASN:HD21	1:B:191:ASN:HA	1.71	0.55
1:A:144:ASN:HD21	1:A:191:ASN:HA	1.72	0.54
1:A:54:ILE:HG22	1:A:56:PRO:HD3	1.94	0.50
1:A:396:ALA:HB1	1:A:403:LYS:HE3	1.94	0.50
1:C:396:ALA:HB1	1:C:403:LYS:HE3	1.94	0.49
1:B:31:ASN:HD22	1:B:223:PHE:H	1.61	0.48
1:B:197:GLU:OE2	1:B:207:ARG:NH2	2.46	0.48
1:B:396:ALA:HB1	1:B:403:LYS:HE3	1.95	0.47
1:B:54:ILE:HG22	1:B:56:PRO:HD3	1.96	0.46
1:C:31:ASN:HD22	1:C:223:PHE:H	1.61	0.46
1:A:31:ASN:HD22	1:A:223:PHE:H	1.62	0.46
1:C:54:ILE:HG22	1:C:56:PRO:HD3	1.96	0.46
1:C:92:HIS:HA	1:C:97:GLN:HG3	1.99	0.45
1:A:92:HIS:HA	1:A:97:GLN:HG3	2.00	0.43
1:B:92:HIS:HA	1:B:97:GLN:HG3	2.00	0.43
1:B:345:TYR:HB3	1:B:346:PRO:CD	2.49	0.42
1:A:345:TYR:HB3	1:A:346:PRO:CD	2.50	0.42
1:A:129:ALA:O	1:A:151:TYR:HA	2.20	0.42
1:B:182:PHE:CE2	1:B:184:TYR:HB2	2.55	0.42
1:C:129:ALA:O	1:C:151:TYR:HA	2.20	0.41
1:C:345:TYR:HB3	1:C:346:PRO:CD	2.50	0.41
1:B:129:ALA:O	1:B:151:TYR:HA	2.21	0.41
1:A:182:PHE:CE2	1:A:184:TYR:HB2	2.55	0.41
1:C:75:HIS:HE1	1:C:77:PHE:CZ	2.39	0.40
1:B:67:SER:OG	1:B:334:ARG:NH1	2.54	0.40
1:C:182:PHE:CE2	1:C:184:TYR:HB2	2.56	0.40

There are no symmetry-related clashes.

## 5.3 Torsion angles [i](#)

### 5.3.1 Protein backbone [i](#)

In the following table, the Percentiles column shows the percent Ramachandran outliers of the chain as a percentile score with respect to all X-ray entries followed by that with respect to entries of similar resolution.

The Analysed column shows the number of residues for which the backbone conformation was analysed, and the total number of residues.

Mol	Chain	Analysed	Favoured	Allowed	Outliers	Percentiles	
1	A	450/452 (100%)	428 (95%)	22 (5%)	0	100	100
1	B	450/452 (100%)	427 (95%)	23 (5%)	0	100	100
1	C	450/452 (100%)	426 (95%)	24 (5%)	0	100	100
All	All	1350/1356 (100%)	1281 (95%)	69 (5%)	0	100	100

There are no Ramachandran outliers to report.

### 5.3.2 Protein sidechains [i](#)

In the following table, the Percentiles column shows the percent sidechain outliers of the chain as a percentile score with respect to all X-ray entries followed by that with respect to entries of similar resolution.

The Analysed column shows the number of residues for which the sidechain conformation was analysed, and the total number of residues.

Mol	Chain	Analysed	Rotameric	Outliers	Percentiles	
1	A	361/383 (94%)	357 (99%)	4 (1%)	73	86
1	B	366/383 (96%)	363 (99%)	3 (1%)	81	90
1	C	366/383 (96%)	361 (99%)	5 (1%)	67	83
All	All	1093/1149 (95%)	1081 (99%)	12 (1%)	73	86

All (12) residues with a non-rotameric sidechain are listed below:

Mol	Chain	Res	Type
1	A	183	GLU
1	A	292	ASN

*Continued on next page...*

*Continued from previous page...*

Mol	Chain	Res	Type
1	A	344	LEU
1	A	387	ARG
1	B	183	GLU
1	B	292	ASN
1	B	387	ARG
1	C	103	ARG
1	C	171	LYS
1	C	183	GLU
1	C	292	ASN
1	C	387	ARG

Some sidechains can be flipped to improve hydrogen bonding and reduce clashes. All (13) such sidechains are listed below:

Mol	Chain	Res	Type
1	A	31	ASN
1	A	75	HIS
1	A	144	ASN
1	A	278	ASN
1	A	279	ASN
1	B	31	ASN
1	B	124	ASN
1	B	144	ASN
1	B	278	ASN
1	C	31	ASN
1	C	144	ASN
1	C	278	ASN
1	C	279	ASN

### 5.3.3 RNA ⓘ

There are no RNA molecules in this entry.

## 5.4 Non-standard residues in protein, DNA, RNA chains ⓘ

There are no non-standard protein/DNA/RNA residues in this entry.

## 5.5 Carbohydrates ⓘ

20 monosaccharides are modelled in this entry.

In the following table, the Counts columns list the number of bonds (or angles) for which Mogul statistics could be retrieved, the number of bonds (or angles) that are observed in the model and the number of bonds (or angles) that are defined in the Chemical Component Dictionary. The Link column lists molecule types, if any, to which the group is linked. The Z score for a bond length (or angle) is the number of standard deviations the observed value is removed from the expected value. A bond length (or angle) with  $|Z| > 2$  is considered an outlier worth inspection. RMSZ is the root-mean-square of all Z scores of the bond lengths (or angles).

Mol	Type	Chain	Res	Link	Bond lengths			Bond angles		
					Counts	RMSZ	# $ Z  > 2$	Counts	RMSZ	# $ Z  > 2$
2	G4S	D	1	2	16,16,16	1.25	1 (6%)	19,24,24	1.12	2 (10%)
2	DGS	D	2	2	15,15,16	1.52	3 (20%)	18,23,25	1.87	7 (38%)
2	G4S	D	3	3,2	15,15,16	1.23	1 (6%)	17,22,24	0.86	0
2	DGS	D	4	2	15,15,16	1.44	2 (13%)	18,23,25	2.18	4 (22%)
2	G4S	E	1	2	16,16,16	1.26	1 (6%)	19,24,24	1.08	2 (10%)
2	DGS	E	2	2	15,15,16	1.07	2 (13%)	18,23,25	2.65	3 (16%)
2	G4S	E	3	2	15,15,16	1.41	1 (6%)	17,22,24	1.15	1 (5%)
2	DGS	E	4	2	15,15,16	1.49	2 (13%)	18,23,25	2.00	6 (33%)
2	G4S	F	1	2	16,16,16	0.91	1 (6%)	19,24,24	0.88	0
2	DGS	F	2	2	15,15,16	1.15	2 (13%)	18,23,25	1.53	5 (27%)
2	G4S	F	3	3,2	15,15,16	0.78	1 (6%)	17,22,24	0.74	0
2	DGS	F	4	2	15,15,16	1.03	2 (13%)	18,23,25	1.82	4 (22%)
2	G4S	G	1	2	16,16,16	1.28	1 (6%)	19,24,24	1.06	1 (5%)
2	DGS	G	2	2	15,15,16	1.42	2 (13%)	18,23,25	1.78	4 (22%)
2	G4S	G	3	2	15,15,16	0.92	1 (6%)	17,22,24	1.61	2 (11%)
2	DGS	G	4	2	15,15,16	0.92	1 (6%)	18,23,25	1.98	5 (27%)
2	G4S	H	1	2	16,16,16	0.83	1 (6%)	19,24,24	1.00	1 (5%)
2	DGS	H	2	2	15,15,16	1.52	2 (13%)	18,23,25	2.17	6 (33%)
2	G4S	H	3	3,2	15,15,16	1.22	1 (6%)	17,22,24	1.11	2 (11%)
2	DGS	H	4	2	15,15,16	1.46	2 (13%)	18,23,25	2.50	3 (16%)

In the following table, the Chirals column lists the number of chiral outliers, the number of chiral centers analysed, the number of these observed in the model and the number defined in the Chemical Component Dictionary. Similar counts are reported in the Torsion and Rings columns. '-' means no outliers of that kind were identified.

Mol	Type	Chain	Res	Link	Chirals	Torsions	Rings
2	G4S	D	1	2	-	3/7/27/27	0/1/1/1
2	DGS	D	2	2	-	2/5/27/30	0/3/2/2
2	G4S	D	3	3,2	-	0/7/24/27	0/1/1/1

*Continued on next page...*

*Continued from previous page...*

Mol	Type	Chain	Res	Link	Chirals	Torsions	Rings
2	DGS	D	4	2	-	2/5/27/30	0/3/2/2
2	G4S	E	1	2	-	1/7/27/27	0/1/1/1
2	DGS	E	2	2	-	5/5/27/30	0/3/2/2
2	G4S	E	3	2	-	1/7/24/27	0/1/1/1
2	DGS	E	4	2	-	3/5/27/30	0/3/2/2
2	G4S	F	1	2	-	3/7/27/27	0/1/1/1
2	DGS	F	2	2	-	2/5/27/30	0/3/2/2
2	G4S	F	3	3,2	-	0/7/24/27	0/1/1/1
2	DGS	F	4	2	-	2/5/27/30	0/3/2/2
2	G4S	G	1	2	-	0/7/27/27	0/1/1/1
2	DGS	G	2	2	-	3/5/27/30	0/3/2/2
2	G4S	G	3	2	-	2/7/24/27	0/1/1/1
2	DGS	G	4	2	-	0/5/27/30	0/3/2/2
2	G4S	H	1	2	-	2/7/27/27	0/1/1/1
2	DGS	H	2	2	-	2/5/27/30	0/3/2/2
2	G4S	H	3	3,2	-	0/7/24/27	0/1/1/1
2	DGS	H	4	2	-	3/5/27/30	0/3/2/2

All (30) bond length outliers are listed below:

Mol	Chain	Res	Type	Atoms	Z	Observed(Å)	Ideal(Å)
2	E	3	G4S	O7-S	4.63	1.65	1.45
2	E	4	DGS	O8-S	4.45	1.64	1.45
2	H	2	DGS	O8-S	4.37	1.64	1.45
2	D	3	G4S	O8-S	4.30	1.63	1.45
2	H	3	G4S	O8-S	4.26	1.63	1.45
2	D	2	DGS	O8-S	4.26	1.63	1.45
2	G	2	DGS	O9-S	4.25	1.63	1.45
2	D	4	DGS	O9-S	4.19	1.63	1.45
2	G	1	G4S	O7-S	4.17	1.63	1.45
2	D	1	G4S	O8-S	4.14	1.63	1.45
2	E	1	G4S	O7-S	4.13	1.62	1.45
2	H	4	DGS	O9-S	4.05	1.62	1.45
2	H	4	DGS	O2-C2	-3.27	1.42	1.47
2	F	2	DGS	O2-C2	-2.94	1.42	1.47
2	H	2	DGS	O2-C2	-2.90	1.42	1.47
2	D	4	DGS	O2-C2	-2.83	1.43	1.47
2	E	2	DGS	O2-C2	-2.57	1.43	1.47
2	E	4	DGS	O2-C2	-2.50	1.43	1.47
2	D	2	DGS	O2-C2	-2.47	1.43	1.47

*Continued on next page...*

*Continued from previous page...*

Mol	Chain	Res	Type	Atoms	Z	Observed(Å)	Ideal(Å)
2	D	2	DGS	C1-C2	2.37	1.55	1.51
2	G	2	DGS	C1-C2	2.35	1.55	1.51
2	E	2	DGS	O7-S	2.27	1.64	1.50
2	F	2	DGS	O7-S	2.24	1.64	1.50
2	F	4	DGS	O2-C2	-2.24	1.43	1.47
2	F	4	DGS	O7-S	2.21	1.64	1.50
2	F	1	G4S	O9-S	2.20	1.63	1.50
2	G	4	DGS	O7-S	2.17	1.63	1.50
2	G	3	G4S	O9-S	2.15	1.63	1.50
2	F	3	G4S	O9-S	2.14	1.63	1.50
2	H	1	G4S	O9-S	2.08	1.63	1.50

All (58) bond angle outliers are listed below:

Mol	Chain	Res	Type	Atoms	Z	Observed(°)	Ideal(°)
2	E	2	DGS	C2-O2-S	7.44	127.61	117.91
2	H	4	DGS	C2-O2-S	7.36	127.50	117.91
2	E	2	DGS	O2-C2-C3	6.59	113.95	106.65
2	D	4	DGS	O2-C2-C3	6.43	113.77	106.65
2	H	4	DGS	O2-C2-C3	5.79	113.06	106.65
2	E	4	DGS	C2-O2-S	5.76	125.43	117.91
2	F	4	DGS	O2-C2-C3	4.82	111.99	106.65
2	D	4	DGS	C2-O2-S	4.82	124.20	117.91
2	G	4	DGS	C1-O5-C5	4.82	118.72	112.19
2	H	2	DGS	C2-O2-S	4.76	124.11	117.91
2	H	2	DGS	O2-C2-C3	4.66	111.81	106.65
2	G	2	DGS	C2-O2-S	4.64	123.96	117.91
2	D	2	DGS	C1-O5-C5	4.16	117.83	112.19
2	H	2	DGS	C1-O5-C5	4.04	117.66	112.19
2	G	3	G4S	O5-C5-C6	4.02	113.50	107.20
2	E	4	DGS	C1-O5-C5	3.87	117.43	112.19
2	F	4	DGS	C2-O2-S	3.86	122.94	117.91
2	H	4	DGS	C1-O5-C5	3.66	117.15	112.19
2	G	4	DGS	C2-O2-S	3.63	122.64	117.91
2	F	2	DGS	C1-O5-C5	3.60	117.07	112.19
2	D	2	DGS	C2-O2-S	3.37	122.31	117.91
2	E	2	DGS	C1-O5-C5	3.35	116.74	112.19
2	G	2	DGS	C1-O5-C5	3.24	116.58	112.19
2	G	1	G4S	C4-O4-S	3.05	124.76	118.88
2	D	4	DGS	C1-O5-C5	2.99	116.24	112.19
2	F	2	DGS	C2-O2-S	2.97	121.78	117.91
2	G	3	G4S	O5-C5-C4	-2.92	104.60	110.07

*Continued on next page...*

*Continued from previous page...*

Mol	Chain	Res	Type	Atoms	Z	Observed(°)	Ideal(°)
2	F	4	DGS	C1-O5-C5	2.88	116.09	112.19
2	H	3	G4S	O5-C5-C6	2.73	111.49	107.20
2	G	4	DGS	O2-C2-C3	2.65	109.58	106.65
2	H	2	DGS	C3-C4-C5	-2.64	96.25	101.99
2	E	1	G4S	C2-C3-C4	2.57	115.56	109.68
2	D	2	DGS	O5-C5-C6	-2.54	109.55	113.33
2	D	1	G4S	C4-O4-S	2.45	123.61	118.88
2	E	4	DGS	O2-C2-C3	2.42	109.33	106.65
2	D	2	DGS	C4-C3-C2	-2.40	108.01	113.84
2	E	3	G4S	O5-C5-C4	-2.38	105.61	110.07
2	G	4	DGS	O5-C5-C6	-2.33	109.86	113.33
2	E	1	G4S	C4-O4-S	2.32	123.36	118.88
2	F	2	DGS	C3-C4-C5	-2.32	96.96	101.99
2	G	4	DGS	C3-C4-C5	-2.31	96.97	101.99
2	D	4	DGS	C3-C4-C5	-2.23	97.15	101.99
2	H	2	DGS	C4-C3-C2	-2.22	108.46	113.84
2	G	2	DGS	C1-C2-C3	2.20	112.69	109.40
2	D	2	DGS	O4-C4-C5	2.20	117.42	111.05
2	H	2	DGS	O3-C3-C4	2.19	107.51	103.59
2	E	4	DGS	C1-C2-C3	2.18	112.65	109.40
2	E	4	DGS	C3-C4-C5	-2.16	97.29	101.99
2	D	1	G4S	C1-C2-C3	2.15	114.77	110.31
2	G	2	DGS	C3-C4-C5	-2.14	97.34	101.99
2	F	4	DGS	C3-C4-C5	-2.14	97.34	101.99
2	H	3	G4S	C1-O5-C5	2.13	115.08	112.19
2	D	2	DGS	O2-C2-C3	2.10	108.98	106.65
2	D	2	DGS	C3-C4-C5	-2.09	97.44	101.99
2	F	2	DGS	C4-C3-C2	-2.08	108.79	113.84
2	E	4	DGS	C4-C3-C2	-2.07	108.81	113.84
2	F	2	DGS	O3-C3-C2	2.05	112.40	107.99
2	H	1	G4S	C4-O4-S	2.05	122.83	118.88

There are no chirality outliers.

All (36) torsion outliers are listed below:

Mol	Chain	Res	Type	Atoms
2	H	4	DGS	C1-C2-O2-S
2	H	4	DGS	C3-C2-O2-S
2	H	1	G4S	C3-C4-O4-S
2	F	1	G4S	C4-O4-S-O7
2	G	2	DGS	C2-O2-S-O7
2	D	4	DGS	C1-C2-O2-S

*Continued on next page...*



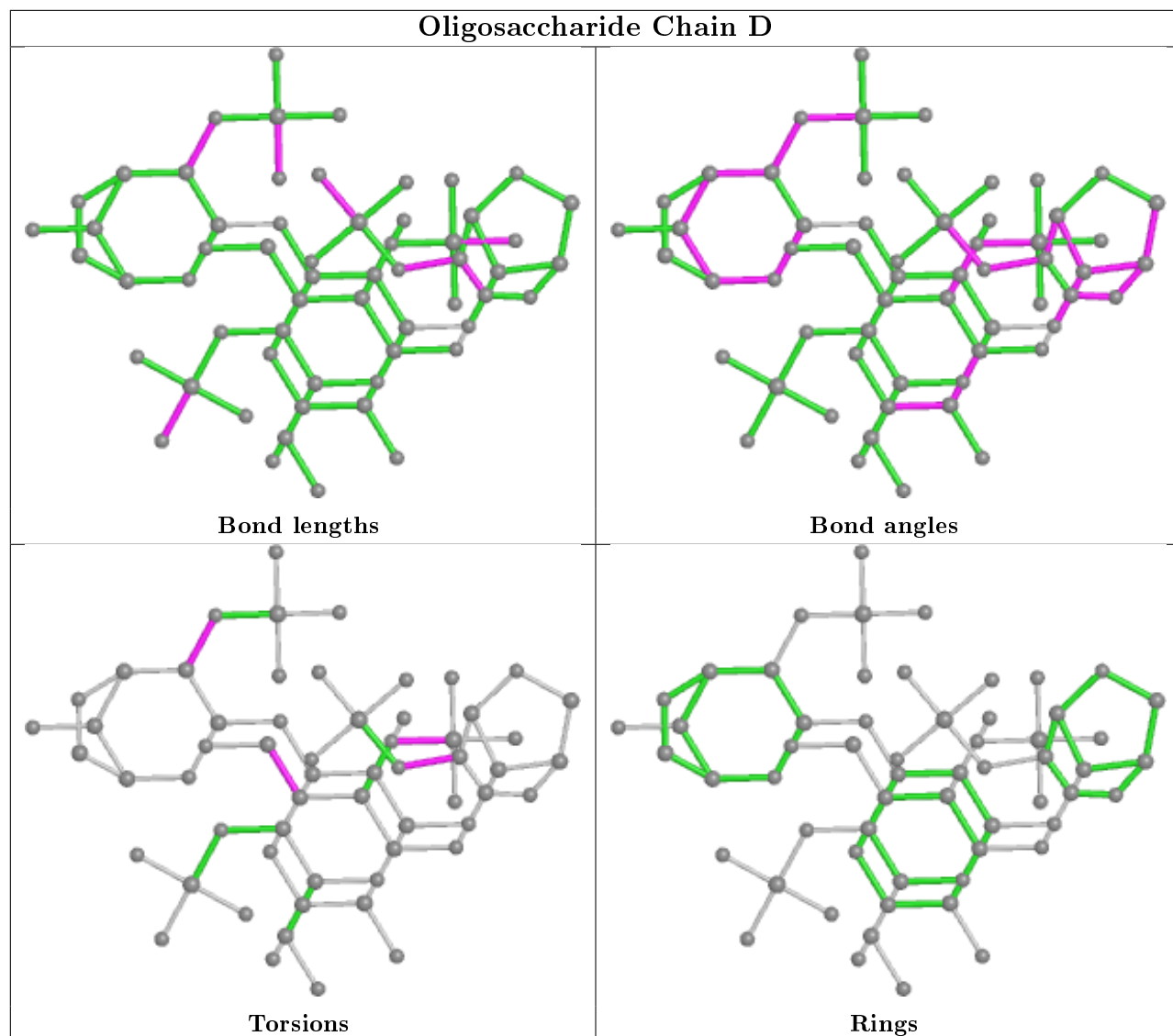
*Continued from previous page...*

Mol	Chain	Res	Type	Atoms
2	D	4	DGS	C3-C2-O2-S
2	E	2	DGS	C1-C2-O2-S
2	E	2	DGS	C3-C2-O2-S
2	E	2	DGS	C2-O2-S-O7
2	E	2	DGS	C2-O2-S-O9
2	F	4	DGS	C1-C2-O2-S
2	F	4	DGS	C3-C2-O2-S
2	E	3	G4S	C4-O4-S-O9
2	H	2	DGS	C1-C2-O2-S
2	H	2	DGS	C3-C2-O2-S
2	D	2	DGS	C1-C2-O2-S
2	D	1	G4S	C4-C5-C6-O6
2	D	1	G4S	O5-C5-C6-O6
2	G	3	G4S	O5-C5-C6-O6
2	E	1	G4S	O5-C5-C6-O6
2	F	1	G4S	C4-O4-S-O8
2	G	2	DGS	C2-O2-S-O8
2	E	2	DGS	C2-O2-S-O8
2	E	4	DGS	C2-O2-S-O8
2	E	4	DGS	C2-O2-S-O9
2	G	3	G4S	C4-C5-C6-O6
2	F	2	DGS	C3-C2-O2-S
2	D	2	DGS	C3-C2-O2-S
2	H	4	DGS	C2-O2-S-O7
2	F	1	G4S	C4-O4-S-O9
2	E	4	DGS	C2-O2-S-O7
2	D	1	G4S	C4-O4-S-O9
2	H	1	G4S	C5-C4-O4-S
2	F	2	DGS	C1-C2-O2-S
2	G	2	DGS	C2-O2-S-O9

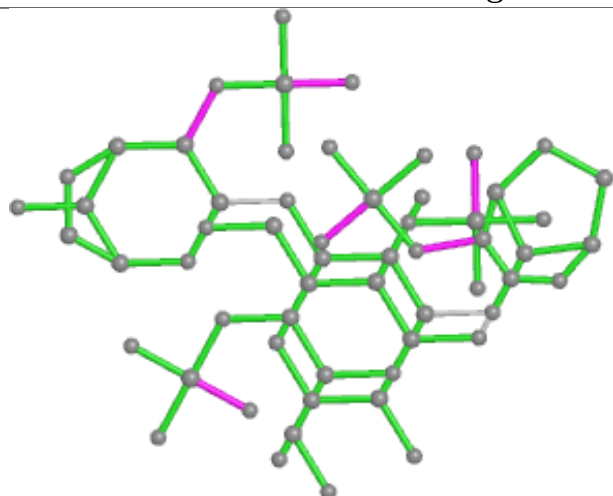
There are no ring outliers.

No monomer is involved in short contacts.

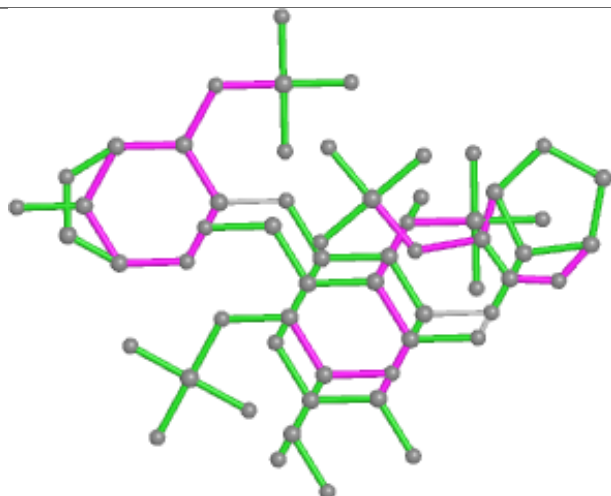
The following is a two-dimensional graphical depiction of Mogul quality analysis of bond lengths, bond angles, torsion angles, and ring geometry for oligosaccharide.



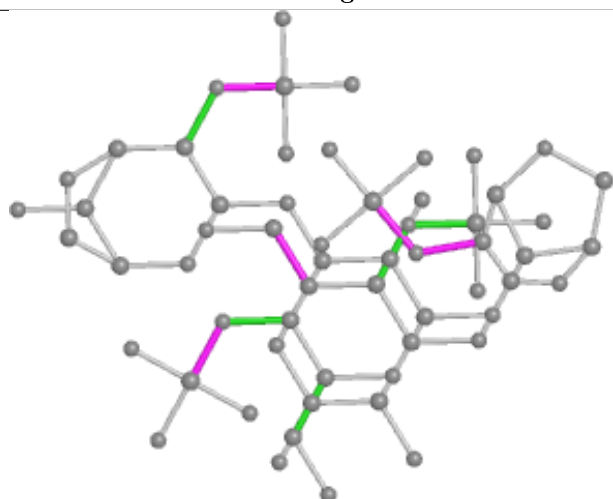
## Oligosaccharide Chain E



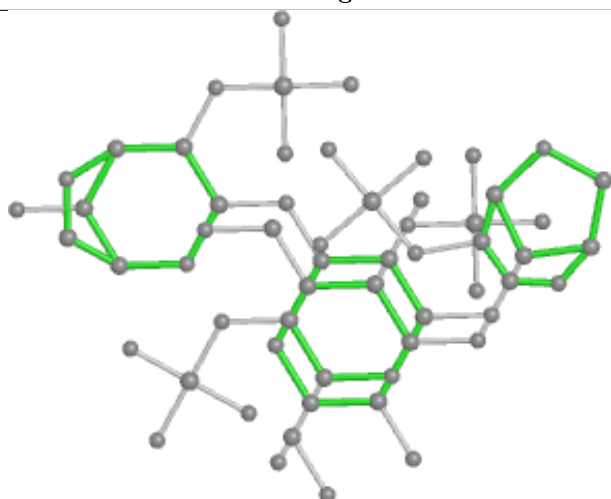
Bond lengths



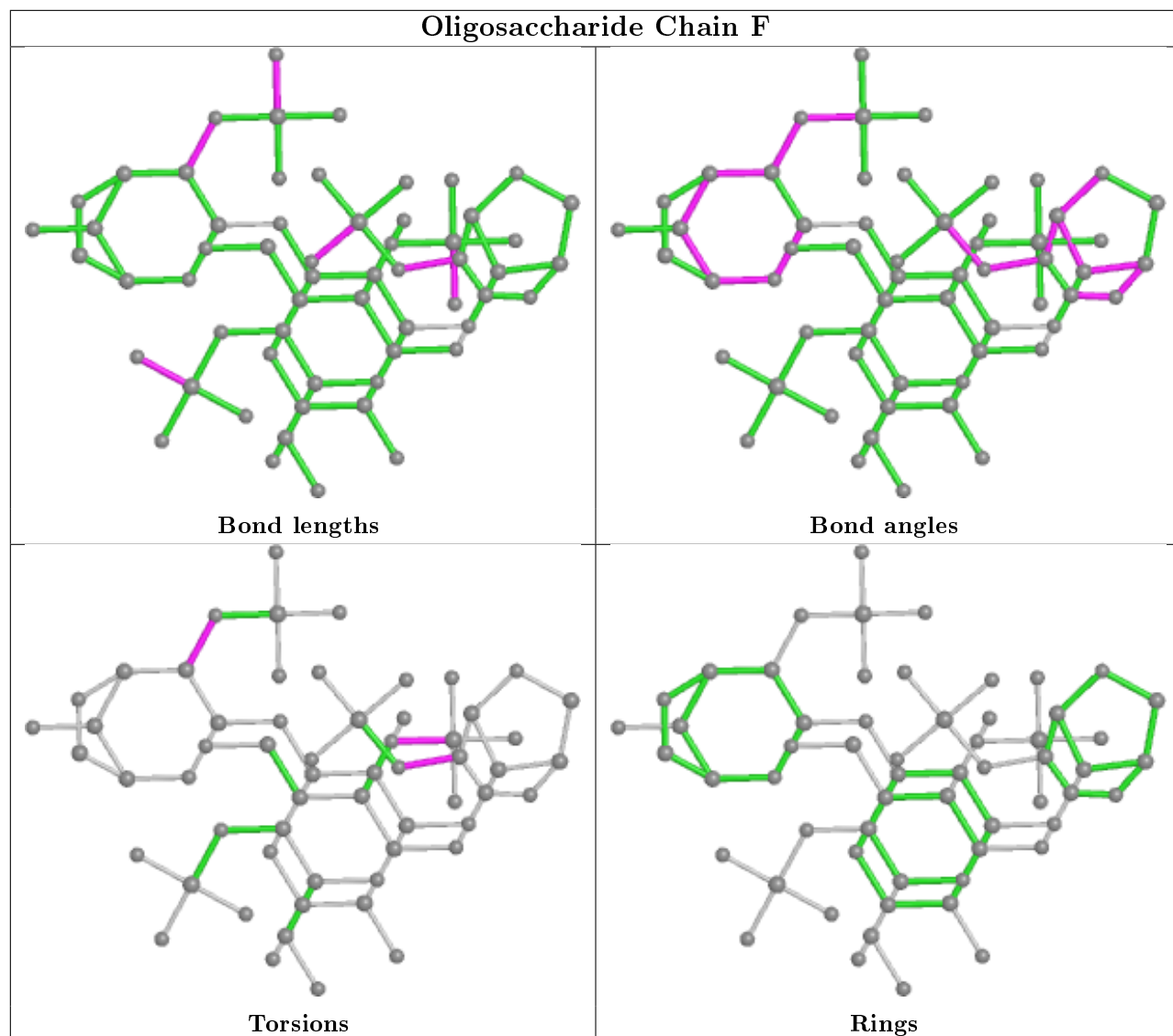
Bond angles

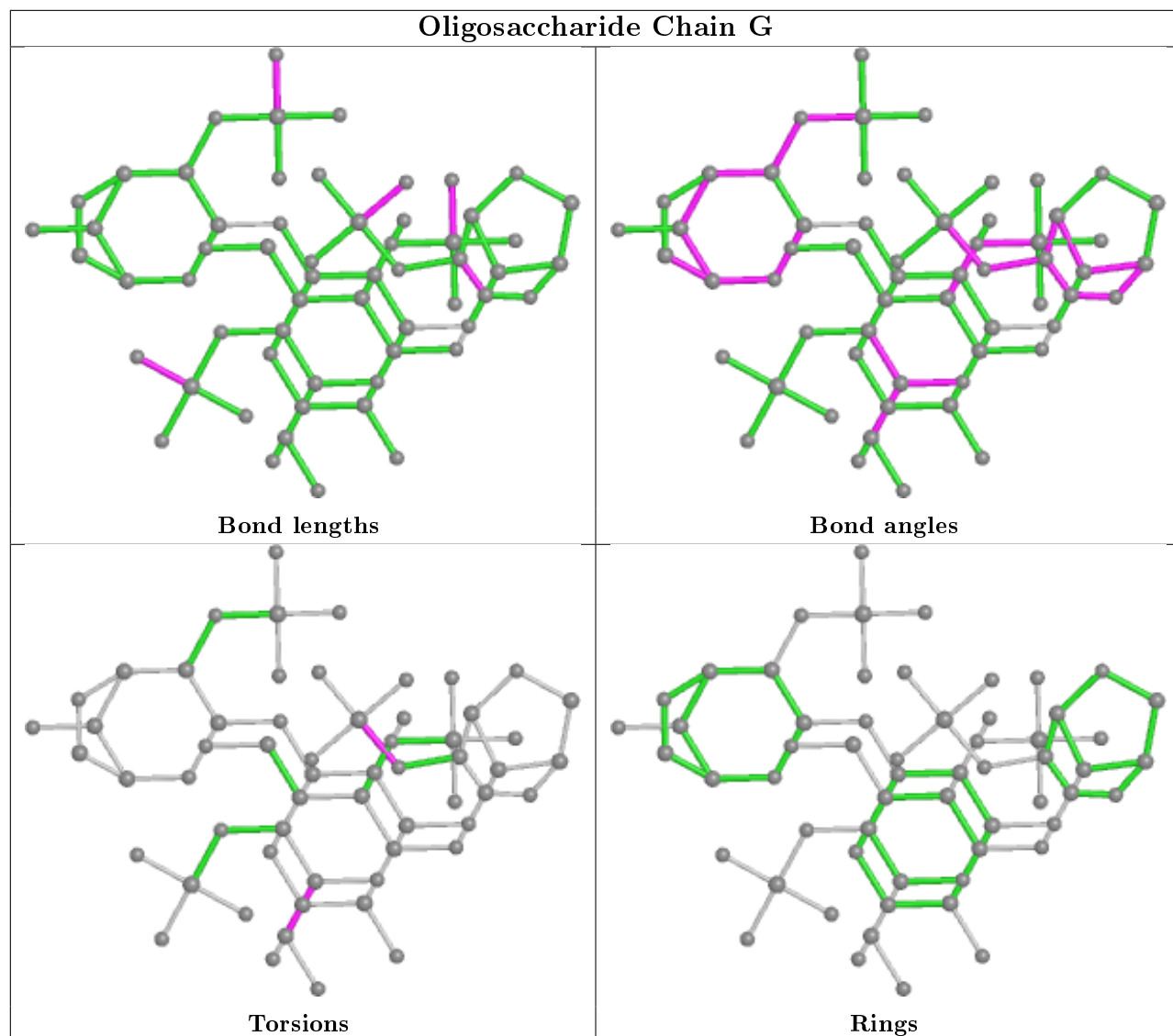


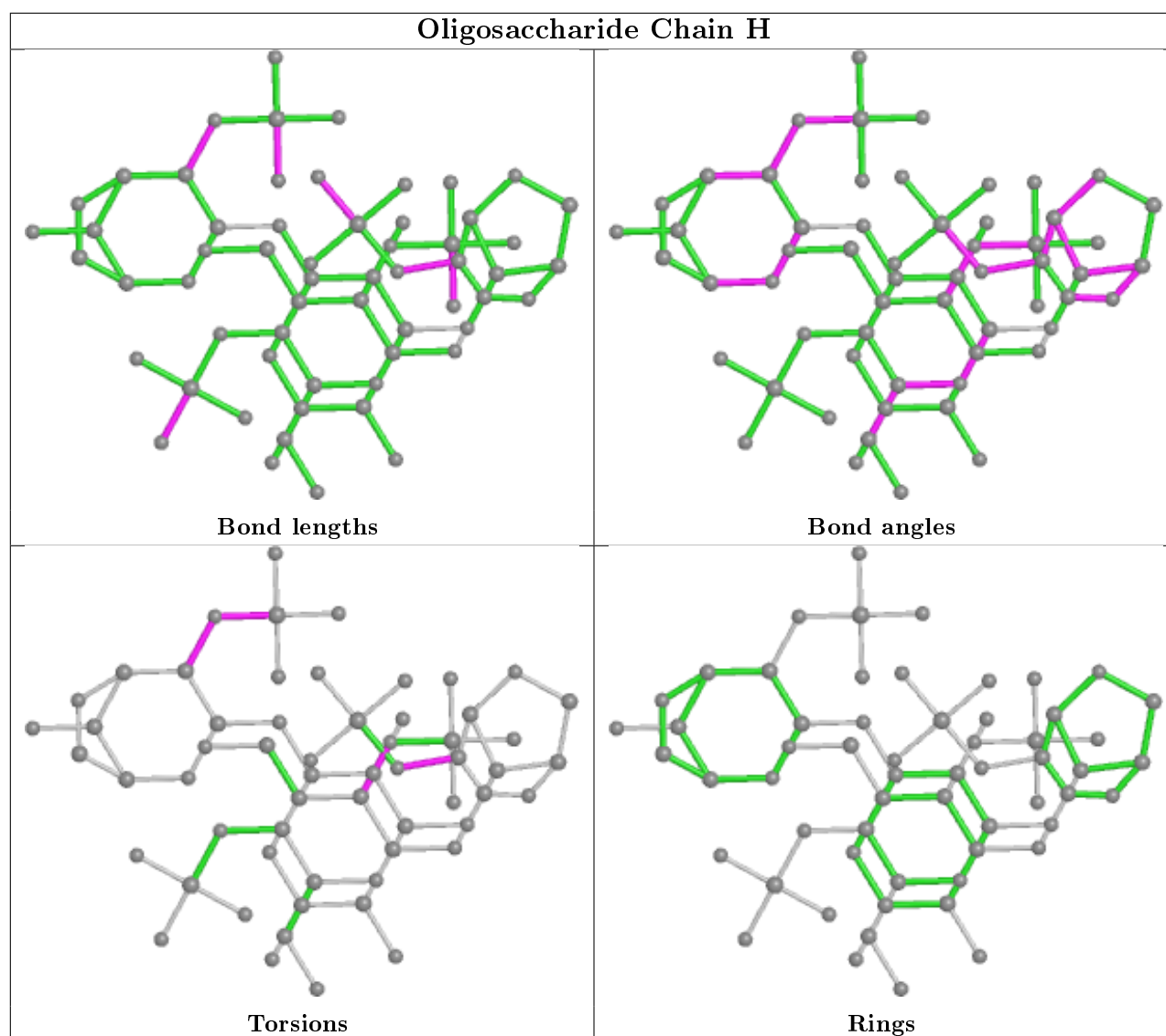
Torsions



Rings







## 5.6 Ligand geometry [i](#)

Of 4 ligands modelled in this entry, 3 are monoatomic - leaving 1 for Mogul analysis.

In the following table, the Counts columns list the number of bonds (or angles) for which Mogul statistics could be retrieved, the number of bonds (or angles) that are observed in the model and the number of bonds (or angles) that are defined in the Chemical Component Dictionary. The Link column lists molecule types, if any, to which the group is linked. The Z score for a bond length (or angle) is the number of standard deviations the observed value is removed from the expected value. A bond length (or angle) with  $|Z| > 2$  is considered an outlier worth inspection. RMSZ is the root-mean-square of all Z scores of the bond lengths (or angles).

Mol	Type	Chain	Res	Link	Bond lengths			Bond angles		
					Counts	RMSZ	$\# Z  > 2$	Counts	RMSZ	$\# Z  > 2$
4	EDO	A	510	-	3,3,3	0.63	0	2,2,2	0.07	0

In the following table, the Chirals column lists the number of chiral outliers, the number of chiral centers analysed, the number of these observed in the model and the number defined in the Chemical Component Dictionary. Similar counts are reported in the Torsion and Rings columns. '-' means no outliers of that kind were identified.

Mol	Type	Chain	Res	Link	Chirals	Torsions	Rings
4	EDO	A	510	-	-	0/1/1/1	-

There are no bond length outliers.

There are no bond angle outliers.

There are no chirality outliers.

There are no torsion outliers.

There are no ring outliers.

No monomer is involved in short contacts.

## 5.7 Other polymers [i](#)

There are no such residues in this entry.

## 5.8 Polymer linkage issues [i](#)

There are no chain breaks in this entry.

## 6 Fit of model and data [i](#)

### 6.1 Protein, DNA and RNA chains [i](#)

In the following table, the column labelled ‘#RSRZ> 2’ contains the number (and percentage) of RSRZ outliers, followed by percent RSRZ outliers for the chain as percentile scores relative to all X-ray entries and entries of similar resolution. The OWAB column contains the minimum, median, 95<sup>th</sup> percentile and maximum values of the occupancy-weighted average B-factor per residue. The column labelled ‘Q< 0.9’ lists the number of (and percentage) of residues with an average occupancy less than 0.9.

Mol	Chain	Analysed	<RSRZ>	#RSRZ>2	OWAB(Å <sup>2</sup> )	Q<0.9
1	A	452/452 (100%)	-0.24	6 (1%) 77 74	34, 45, 60, 88	0
1	B	452/452 (100%)	-0.23	5 (1%) 80 78	36, 45, 61, 82	0
1	C	452/452 (100%)	-0.16	1 (0%) 95 94	35, 50, 67, 83	0
All	All	1356/1356 (100%)	-0.21	12 (0%) 84 83	34, 46, 64, 88	0

All (12) RSRZ outliers are listed below:

Mol	Chain	Res	Type	RSRZ
1	A	218	ASN	3.0
1	B	218	ASN	2.4
1	A	73	VAL	2.3
1	B	36	VAL	2.3
1	A	34	LEU	2.3
1	A	36	VAL	2.2
1	A	359	ASN	2.2
1	C	218	ASN	2.2
1	B	341	ALA	2.2
1	B	35	ILE	2.2
1	A	81	SER	2.1
1	B	479	THR	2.0

### 6.2 Non-standard residues in protein, DNA, RNA chains [i](#)

There are no non-standard protein/DNA/RNA residues in this entry.

### 6.3 Carbohydrates [i](#)

In the following table, the Atoms column lists the number of modelled atoms in the group and the number defined in the chemical component dictionary. The B-factors column lists the minimum,



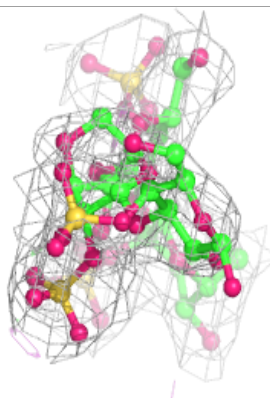
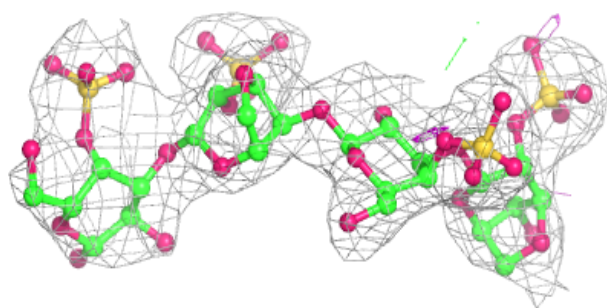
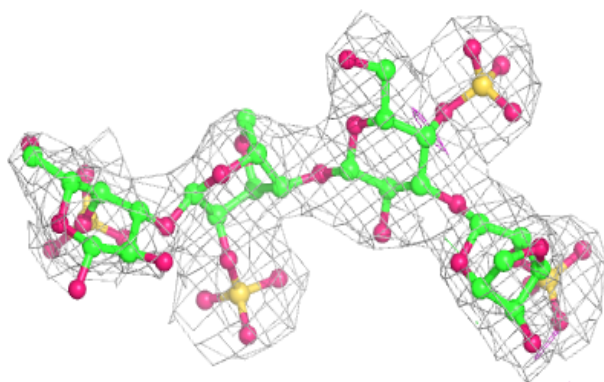
median, 95<sup>th</sup> percentile and maximum values of B factors of atoms in the group. The column labelled 'Q< 0.9' lists the number of atoms with occupancy less than 0.9.

Mol	Type	Chain	Res	Atoms	RSCC	RSR	B-factors(Å <sup>2</sup> )	Q<0.9
2	G4S	E	1	16/16	0.87	0.20	44,79,85,85	6
2	G4S	G	3	15/16	0.92	0.18	61,66,70,70	0
2	DGS	E	4	14/15	0.92	0.24	67,74,81,84	0
2	G4S	H	1	16/16	0.93	0.18	63,78,83,88	0
2	G4S	F	1	16/16	0.93	0.20	49,56,71,78	3
2	G4S	E	3	15/16	0.94	0.24	48,59,66,70	0
2	G4S	G	1	16/16	0.94	0.23	52,56,62,67	0
2	G4S	D	1	16/16	0.95	0.24	65,77,81,86	0
2	DGS	G	4	14/15	0.96	0.15	60,64,67,68	0
2	DGS	E	2	14/15	0.96	0.22	66,79,84,86	0
2	DGS	H	2	14/15	0.96	0.15	45,53,65,67	0
2	DGS	D	2	14/15	0.96	0.17	43,54,57,58	0
2	G4S	D	3	15/16	0.97	0.11	37,39,42,43	0
2	DGS	G	2	14/15	0.97	0.18	43,56,58,61	0
2	DGS	F	2	14/15	0.98	0.11	39,44,49,53	0
2	G4S	F	3	15/16	0.98	0.10	30,34,35,39	0
2	DGS	H	4	14/15	0.98	0.12	37,40,43,43	0
2	G4S	H	3	15/16	0.98	0.10	39,42,44,47	0
2	DGS	F	4	14/15	0.98	0.12	33,38,42,43	0
2	DGS	D	4	14/15	0.98	0.12	38,41,44,44	0

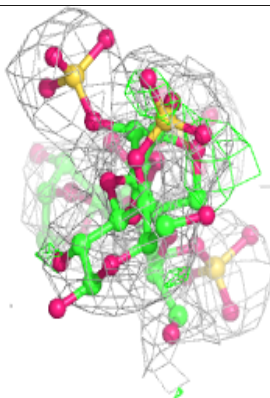
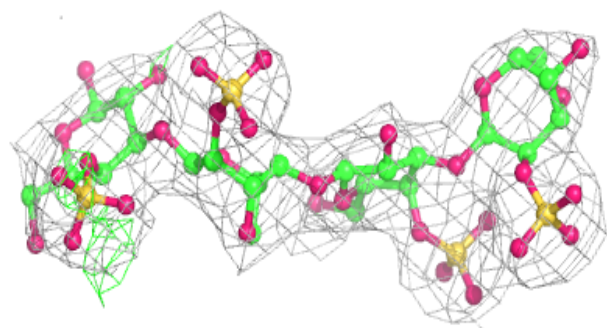
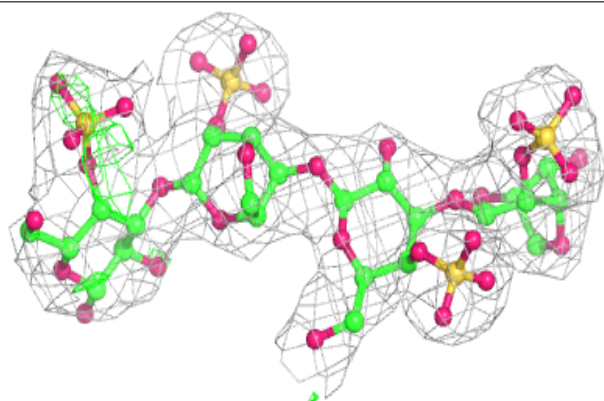
The following is a graphical depiction of the model fit to experimental electron density for oligosaccharide. Each fit is shown from different orientation to approximate a three-dimensional view.

**Electron density around Chain D:**

$2mF_o - DF_c$  (at 0.7 rmsd) in gray  
 $mF_o - DF_c$  (at 3 rmsd) in purple (negative)  
and green (positive)

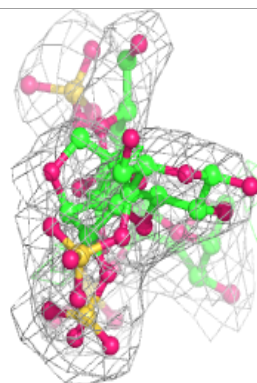
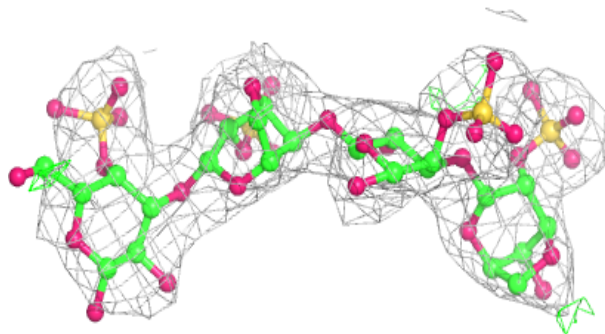
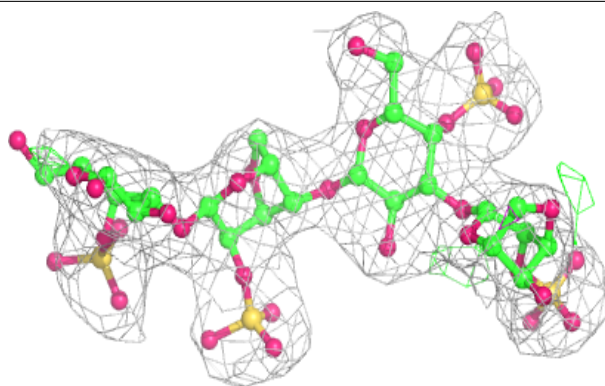
**Electron density around Chain E:**

$2mF_o - DF_c$  (at 0.7 rmsd) in gray  
 $mF_o - DF_c$  (at 3 rmsd) in purple (negative)  
and green (positive)

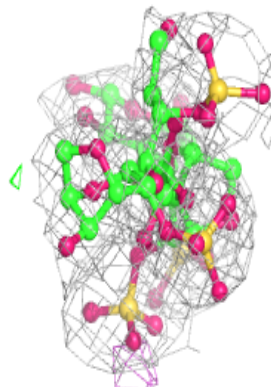
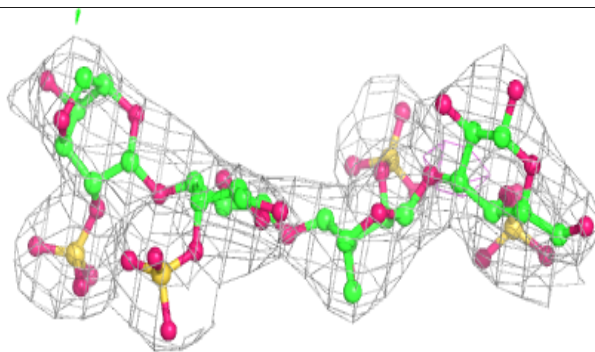
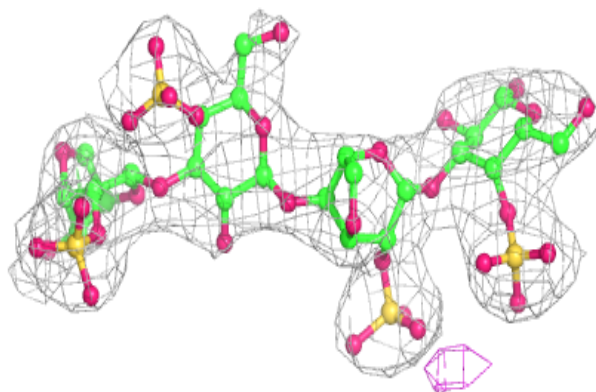


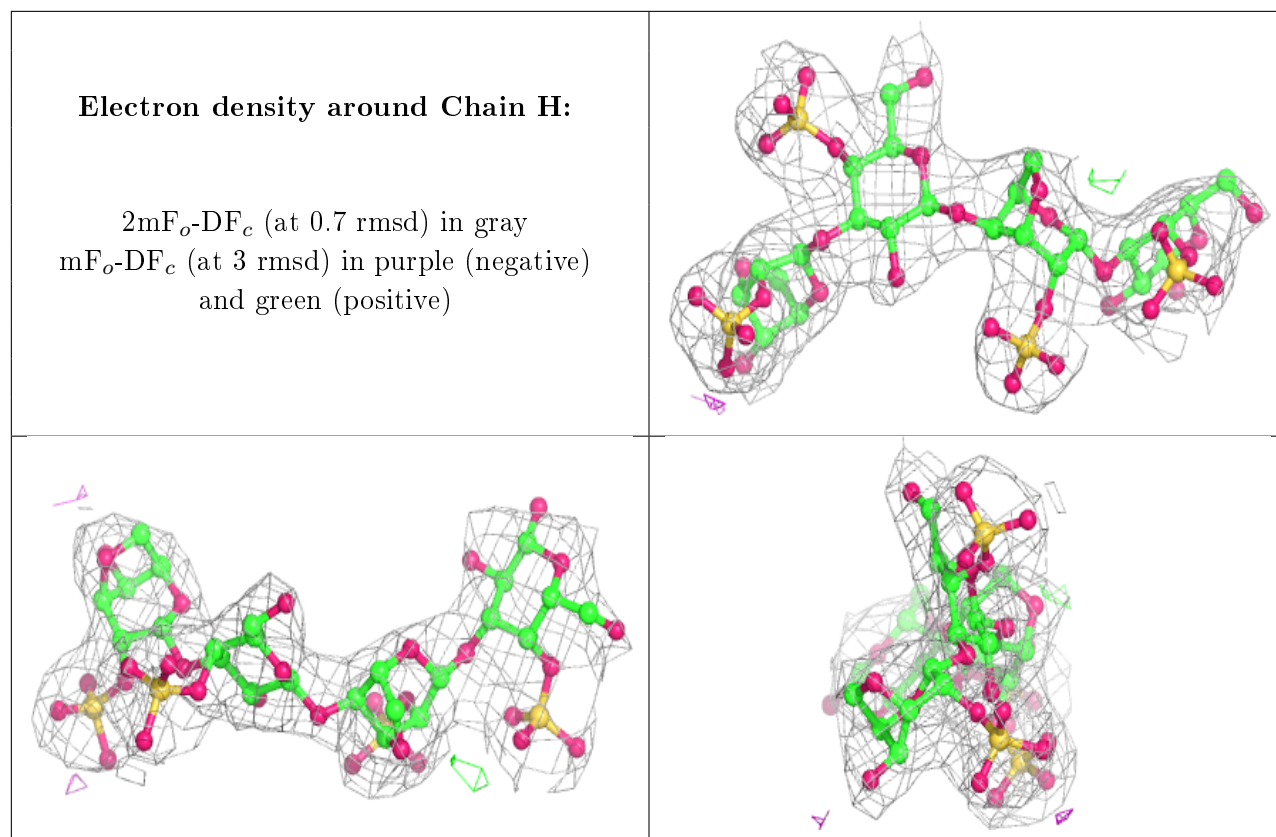
**Electron density around Chain F:**

$2mF_o-DF_c$  (at 0.7 rmsd) in gray  
 $mF_o-DF_c$  (at 3 rmsd) in purple (negative)  
and green (positive)

**Electron density around Chain G:**

$2mF_o-DF_c$  (at 0.7 rmsd) in gray  
 $mF_o-DF_c$  (at 3 rmsd) in purple (negative)  
and green (positive)





## 6.4 Ligands [i](#)

In the following table, the Atoms column lists the number of modelled atoms in the group and the number defined in the chemical component dictionary. The B-factors column lists the minimum, median, 95<sup>th</sup> percentile and maximum values of B factors of atoms in the group. The column labelled 'Q< 0.9' lists the number of atoms with occupancy less than 0.9.

Mol	Type	Chain	Res	Atoms	RSCC	RSR	B-factors( $\text{\AA}^2$ )	Q<0.9
3	CA	B	505	1/1	0.68	0.24	43,43,43,43	1
4	EDO	A	510	4/4	0.73	0.23	62,63,65,65	0
3	CA	A	505	1/1	0.83	0.23	34,34,34,34	1
3	CA	C	501	1/1	0.93	0.17	45,45,45,45	1

## 6.5 Other polymers [i](#)

There are no such residues in this entry.